

V&V Reference Report

L2 ASCDS Version : 8.4.3

Observation 6588 - L2 Version 2
Chandra X-Ray Center

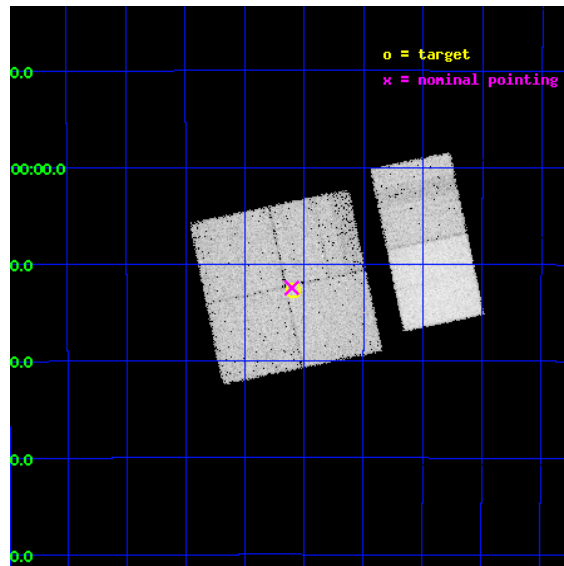
L2 Processing Date : Mar 31 2012

Contents

1	Front	2
2	OBI	3
2.1	OBI	3
2.1.1	Images	3
2.1.2	Bias	3
2.1.3	Parameters	4
2.1.4	Events	4
2.2	Compared Parameters	5
2.3	Aspect	6
2.4	Star Slots	9
2.4.1	Slot 3	9
2.4.2	Slot 4	10
2.4.3	Slot 5	11
2.4.4	Slot 6	12
2.4.5	Slot 7	13
2.5	FID Slots	14
2.5.1	Slot 0	14
2.5.2	Slot 1	15
2.5.3	Slot 2	16
A	Summary	17
A.1	Status	17
A.2	Comments	17

1 Front

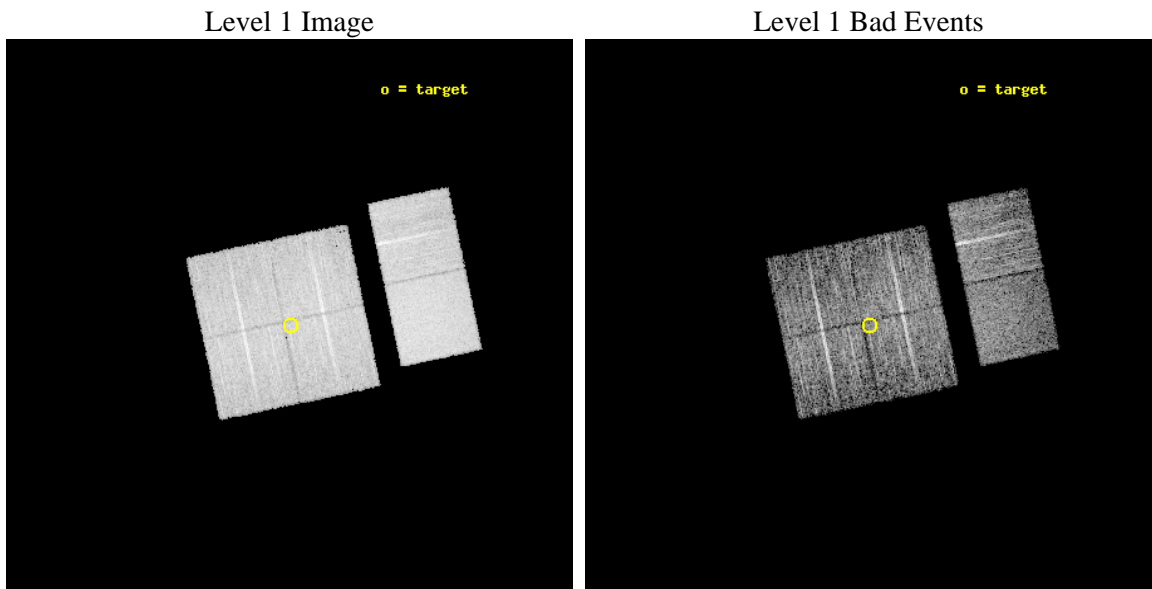
seq_num	400493	Sequence number
obs_id	6588	Observation id
title	Unveiling A New Class of Fast Transient Binaries	Proposal title
observer	Prof. David Smith	Principal investigator
object	XTE J1756-342	Source name
dtcycle	0	
cycle	P	events from which exps? Prim/Second/Both
ra_targ	269.022917	Observer's specified target RA [deg]
dec_targ	-34.211389	Observer's specified target Dec [deg]
ra_nom	269.02606684288	Nominal RA [deg]
dec_nom	-34.207558395926	Nominal Dec [deg]
roll_nom	78.15047685257	Nominal Roll [deg]
revision	2	Processing version of data
ontime	5228.7999805212	Sum of GTIs [s]
livetime	5162.5897667625	Livetime [s]
ontime0	5228.7999805212	Sum of GTIs [s]
ontime1	5228.7999805212	Sum of GTIs [s]
ontime2	5228.7999805212	Sum of GTIs [s]
ontime3	5228.7999805212	Sum of GTIs [s]
ontime6	5228.7999805212	Sum of GTIs [s]
ontime7	5228.7999805212	Sum of GTIs [s]
l2events	142962	Number of level 2 events



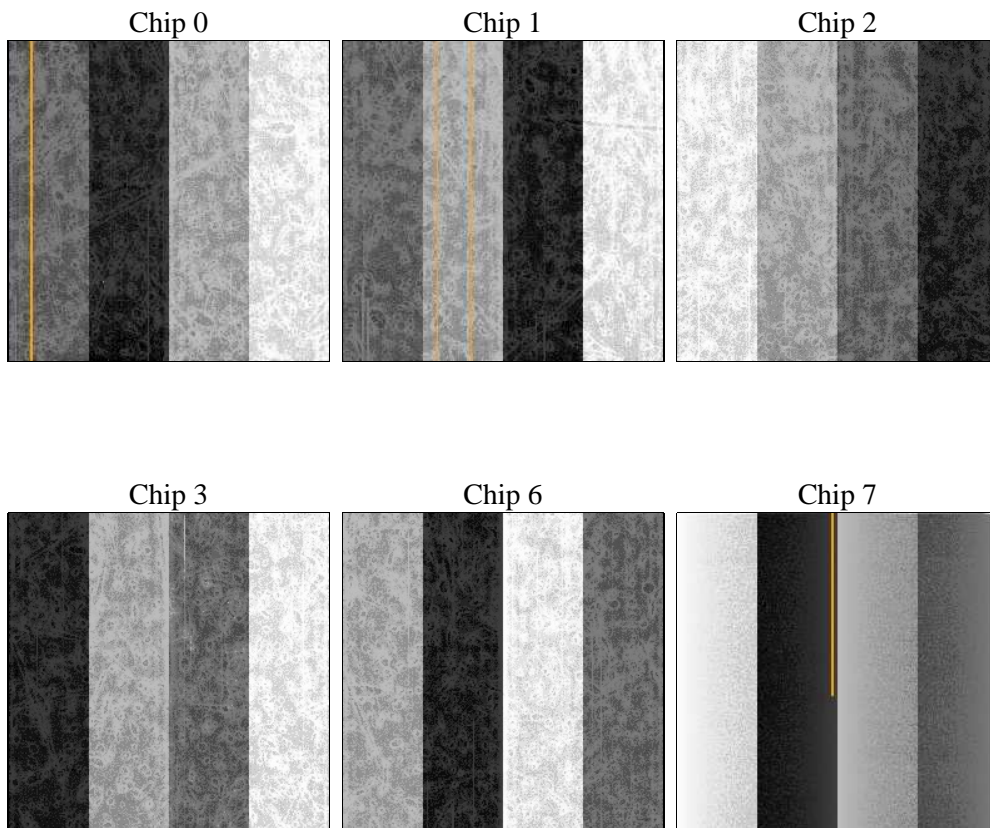
2 OBI

2.1 OBI

2.1.1 Images



2.1.2 Bias



2.1.3 Parameters

obi_num	0	Obi number	sched_exp_time	5275.011000	[s] Scheduled observation exposure time
ascdsver	8.4.3	Processing system revision	ontime	5228.7999805212	Sum of GTIs [s]
caldsver	4.4.8	 	ontime0	5228.7999805212	Sum of GTIs [s]
date	2012-03-31T11:37:48	Date and time of file creation	ontime1	5228.7999805212	Sum of GTIs [s]
revision	2	Processing version of data	ontime2	5228.7999805212	Sum of GTIs [s]
			ontime3	5228.7999805212	Sum of GTIs [s]
			ontime6	5228.7999805212	Sum of GTIs [s]
			ontime7	5228.7999805212	Sum of GTIs [s]
			l1events	388187	Number of level 1 events

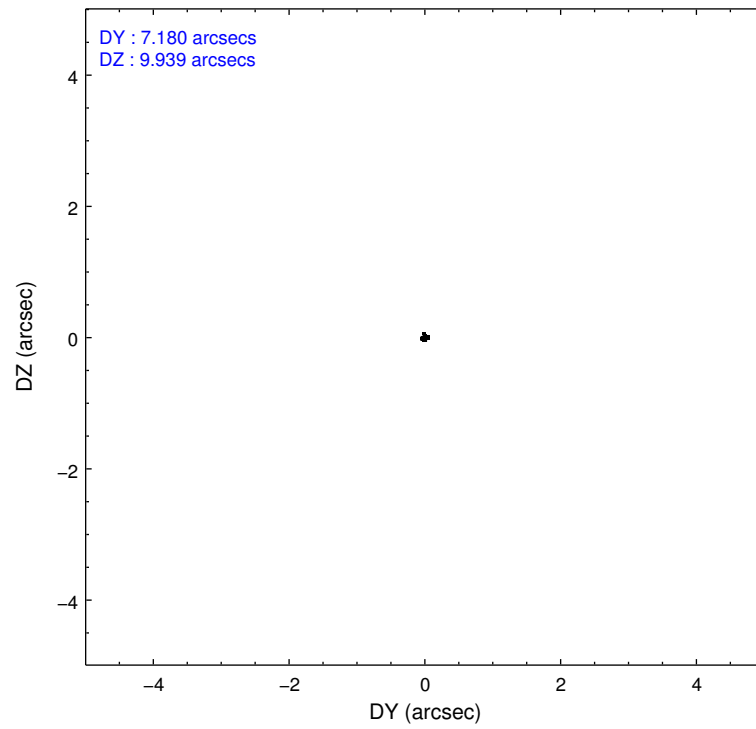
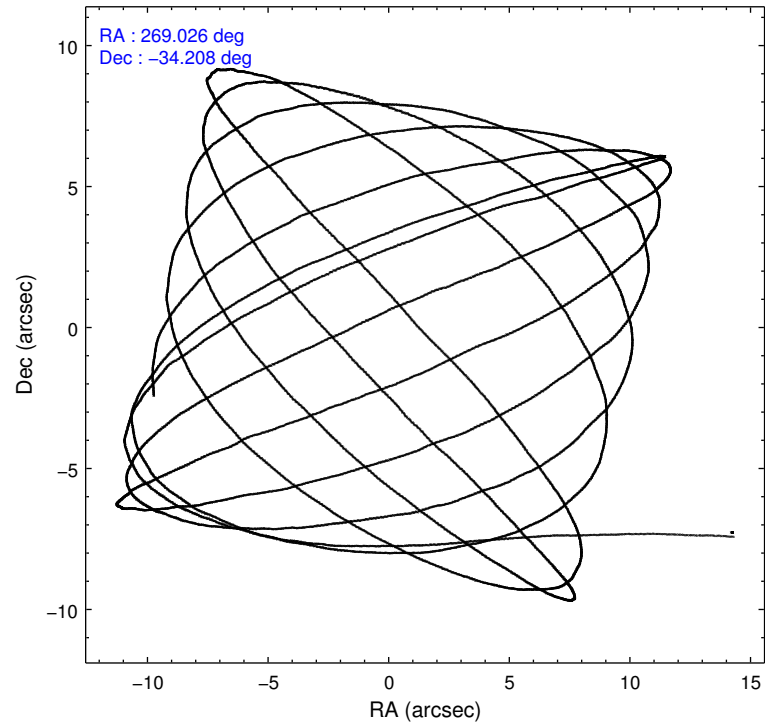
2.1.4 Events

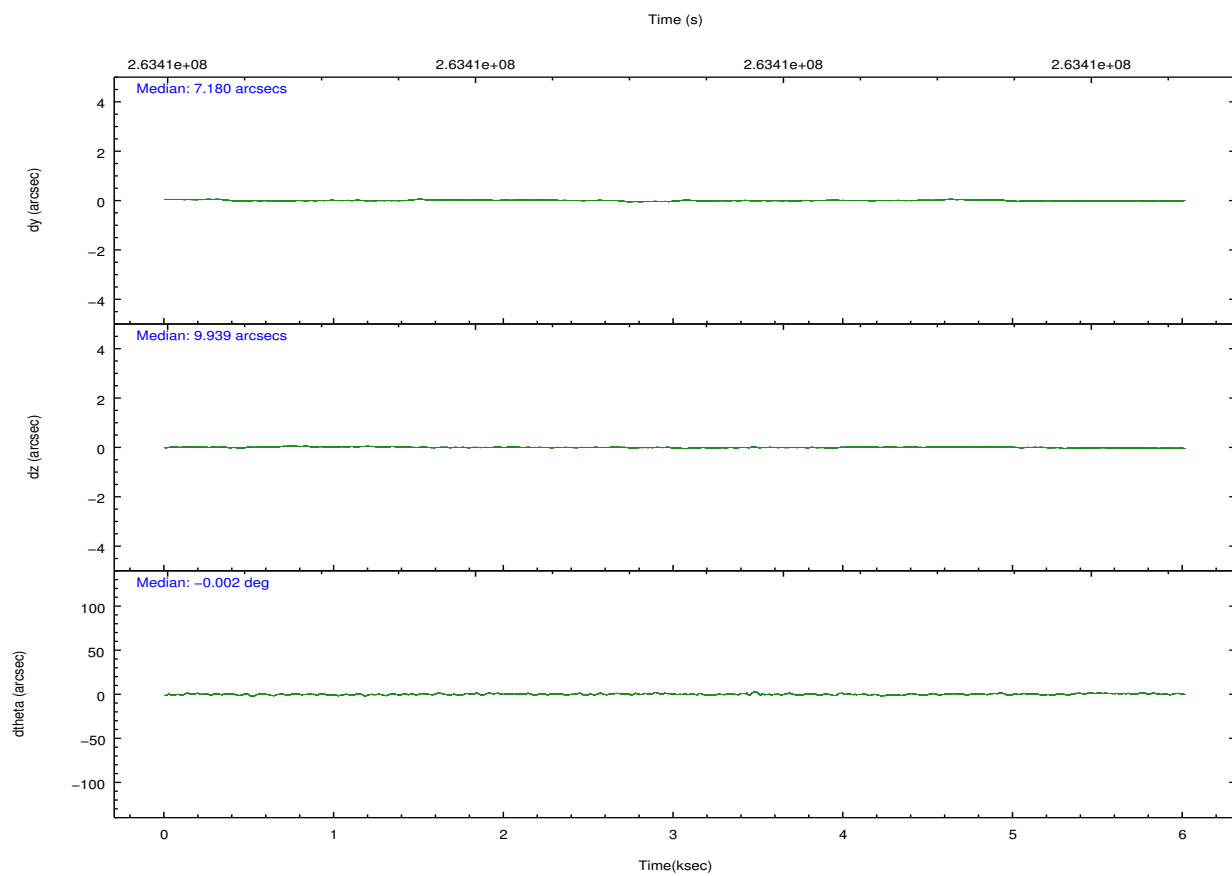
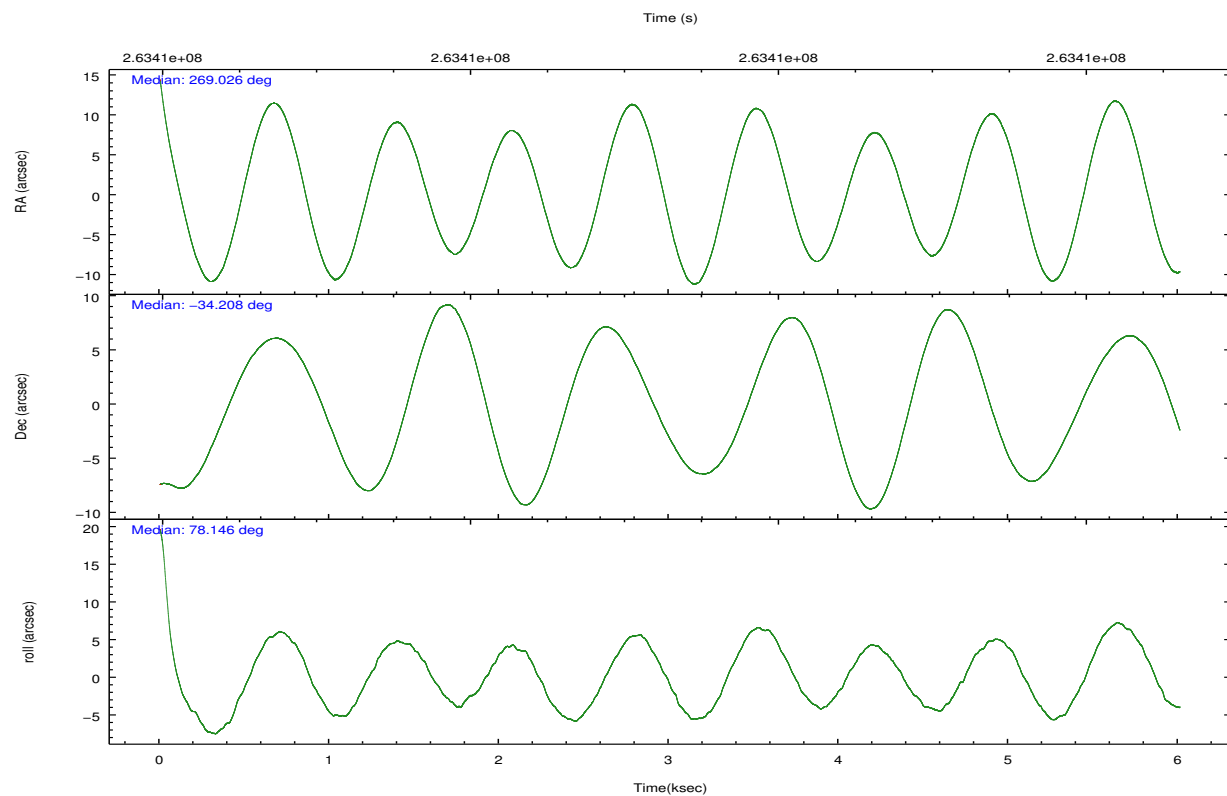
	ccd 0	ccd 1	ccd 2	ccd 3	ccd 6	ccd 7		ccd 0	ccd 1	ccd 2	ccd 3	ccd 6	ccd 7
level 1 events	57337	60286	61354	60712	64536	83962	grade 0 events	14110	13441	13338	14565	13945	4620
rejected events	36220	38695	41667	39345	42732	37651		24%	22%	21%	23%	21%	5%
rejected %	63%	64%	67%	64%	66%	44%	grade 1 events	83	56	106	100	81	74
								0%	0%	0%	0%	0%	0%
							grade 2 events	3015	3797	2564	2686	3449	8258
								5%	6%	4%	4%	5%	9%
							grade 3 events	1119	1148	1075	1131	1104	3498
								1%	1%	1%	1%	1%	4%
							grade 4 events	1019	1082	1004	1125	1048	3386
								1%	1%	1%	1%	1%	4%
							grade 5 events	1855	1992	1746	2144	2309	6025
								3%	3%	2%	3%	3%	7%
							grade 6 events	1876	2144	1724	1882	2281	26600
								3%	3%	2%	3%	3%	31%
							grade 7 events	34260	36626	39797	37079	40319	31501
								59%	60%	64%	61%	62%	37%

2.2 Compared Parameters

Parameter	Planned	Actual	Parameter	Planned	Actual
Instrument	ACIS	ACIS	Obspar format version number	7	7
Detector	ACIS-012367	ACIS-012367	Obspar file type	PREDICTED	ACTUAL
Grating	NONE	NONE	Obspar update status	NONE	UPDATED
Data mode	FAINT	FAINT	Number of optional ACIS chips dropped	0	0
Observation mode	POINTING	POINTING	On-chip summing requested	N	N
[deg] Pointing RA	269.036564	269.0260668428845	Subarray requested	NONE	NONE
[deg] Pointing Dec	-34.233562	-34.20755839592613	Alternating exposures requested	N	N
[deg] Pointing Roll	77.947670	78.15047685257049	[s] Primary exposure time	0.000000	3.2
[mm] SIM focus pos	-0.782348	-0.7809083437167272			
[mm] SIM defocus	0	0.001439871863259334			
[mm] SIM translation stage pos	-233.592463	-233.5874344608287			
[mm] SIM translation stage offset	0	-0.005018542100998502			
[s] Observation start time (MET)	263407028.184000	263405793.28727			
Observation start date	2006-05-07T16:36:03	2006-05-07T16:16:33			
[s] Observation end time (MET)	263412303.184000	263412536.76259			
Observation end date	2006-05-07T18:03:58	2006-05-07T18:08:56			
Read mode	TIMED	TIMED			

2.3 Aspect



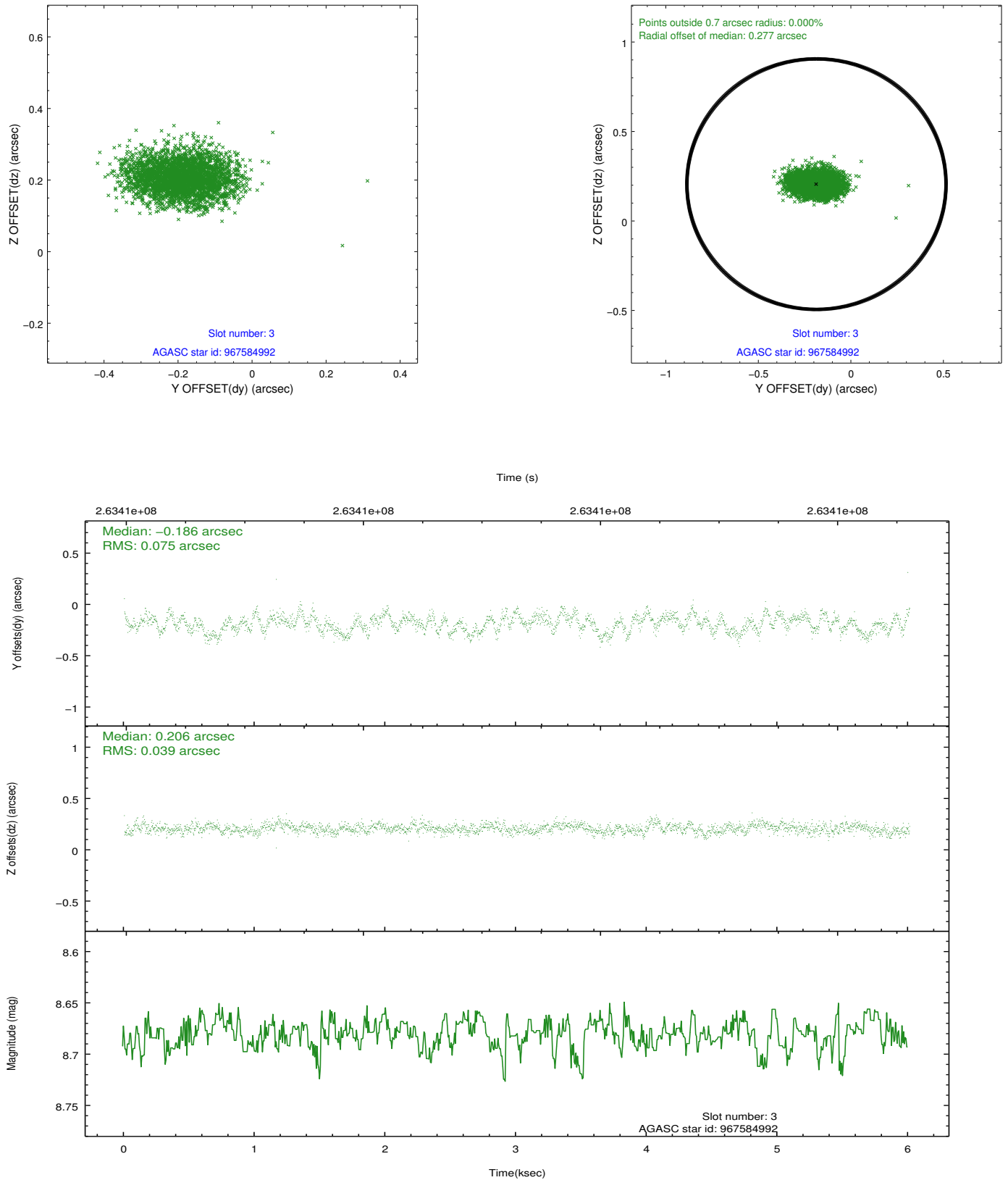


Slot Statistics

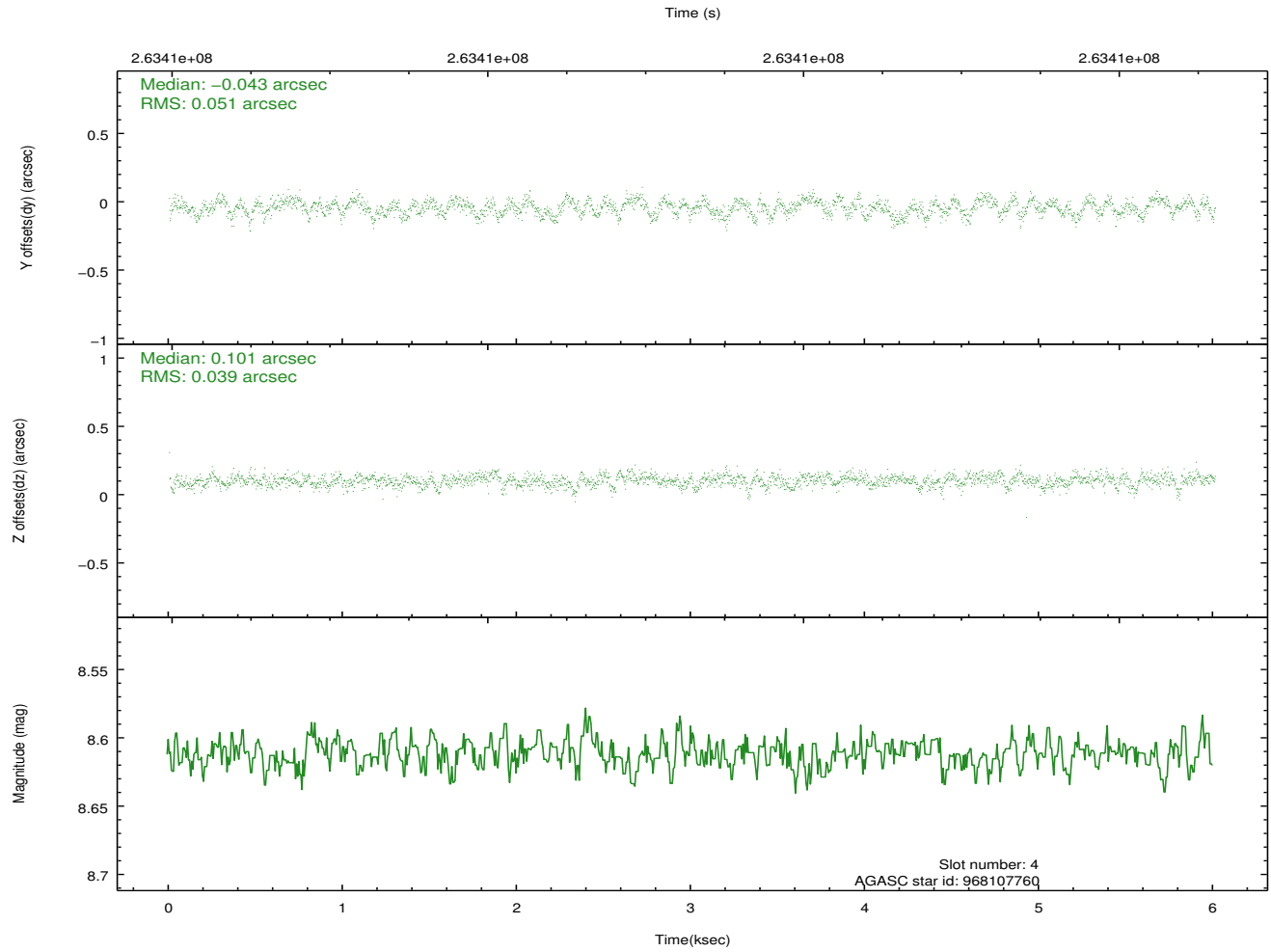
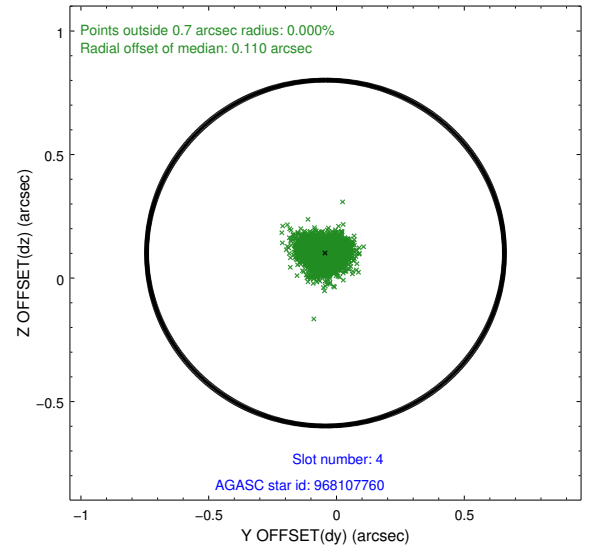
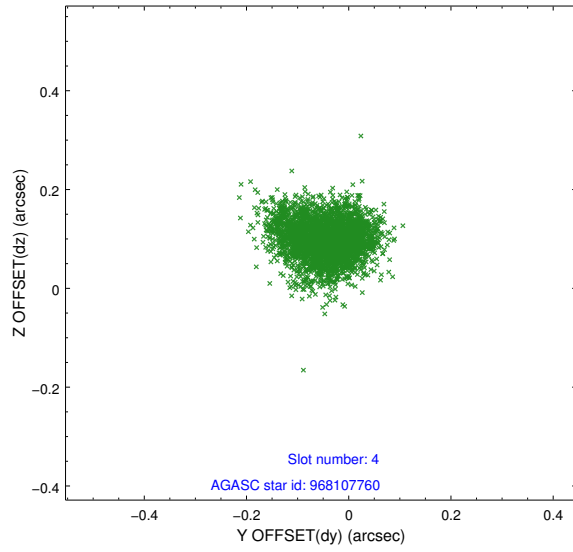
slot	status	id	mag	n_pts	med_dy	med_dz	dr1	dr2	ra	dec	mean_y	mean_z
0	FID	ACIS-I-2	7.15	1466	-0.064	-0.071	0.011	0.033	0.000000	0.000000	-761.75	-839.83
1	FID	ACIS-I-4	7.19	1465	0.163	0.061	0.007	0.013	0.000000	0.000000	2152.10	1065.95
2	FID	ACIS-I-5	7.23	1466	-0.199	0.078	0.011	0.024	0.000000	0.000000	-1814.43	1064.97
3	GUIDE	967584992	8.68	2930	-0.186	0.206	0.089	0.149	269.801503	-33.740000	2207.59	-1869.98
4	GUIDE	968107760	8.61	2931	-0.043	0.101	0.068	0.109	269.495566	-33.949724	1283.44	-1128.28
5	GUIDE	967574240	8.60	2931	-0.033	-0.120	0.058	0.095	268.514181	-33.472857	2347.15	2104.86
6	GUIDE	968102088	8.01	2932	0.137	-0.114	0.068	0.115	268.371556	-34.691794	-2029.71	1579.69
7	GUIDE	968104968	7.31	2931	0.129	-0.076	0.077	0.123	268.559913	-34.727650	-2037.76	1007.40

2.4 Star Slots

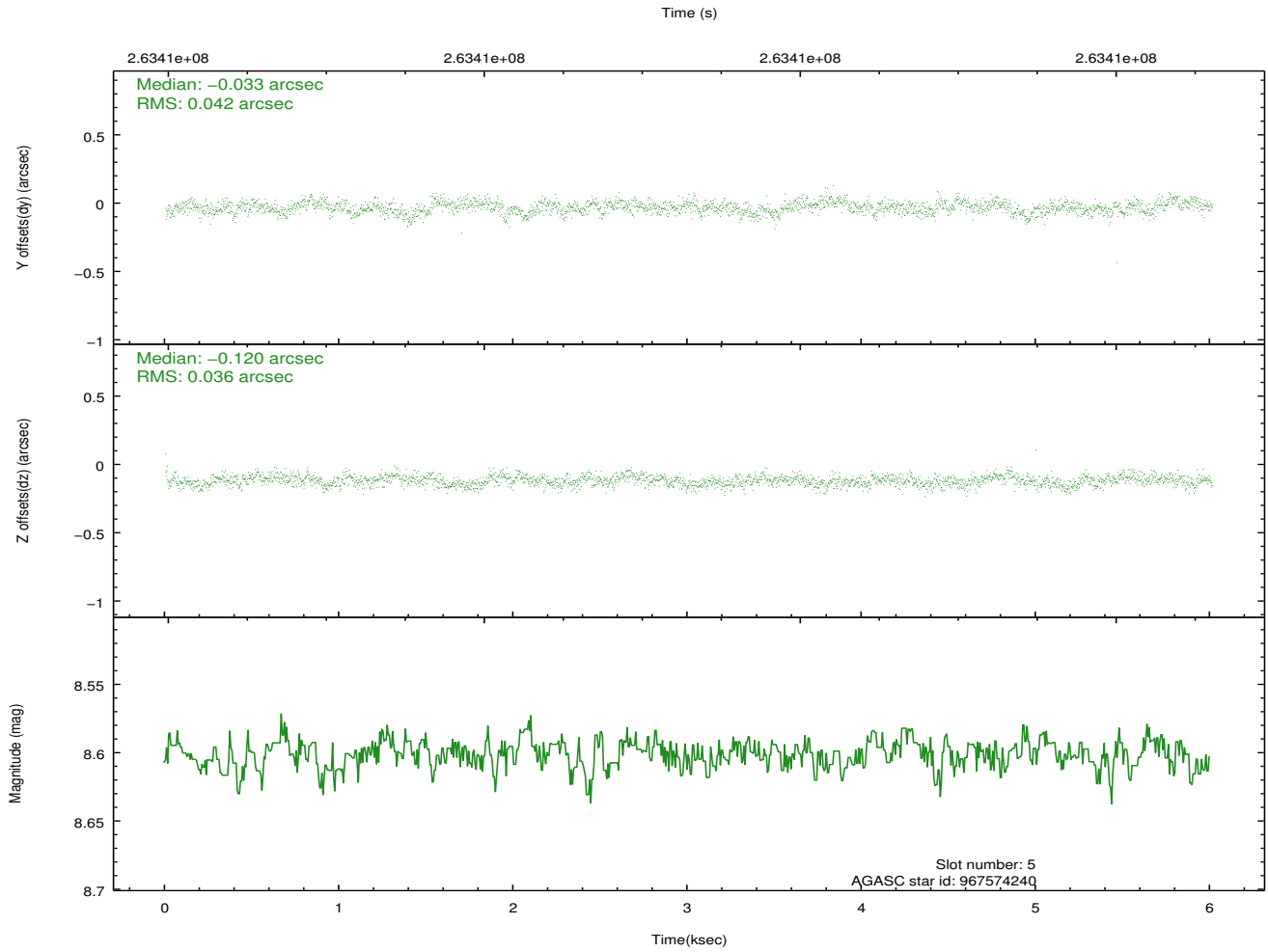
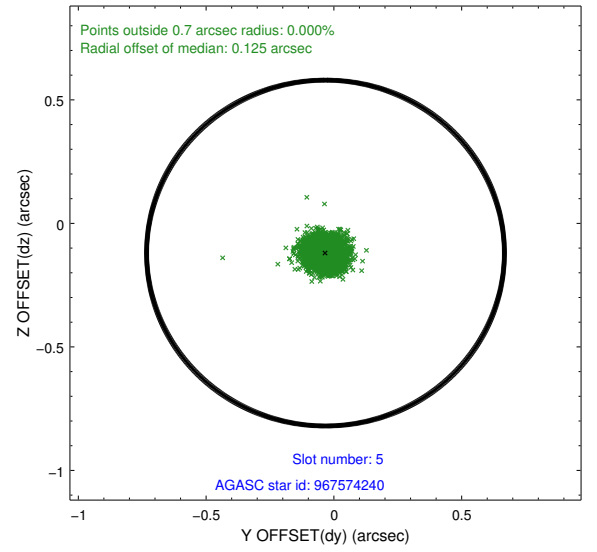
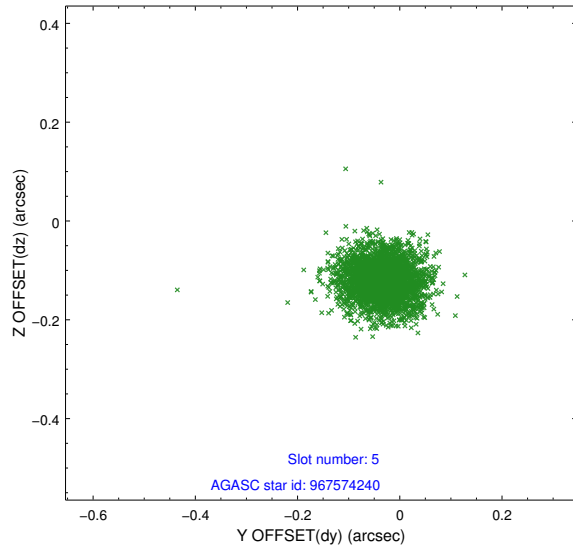
2.4.1 Slot 3



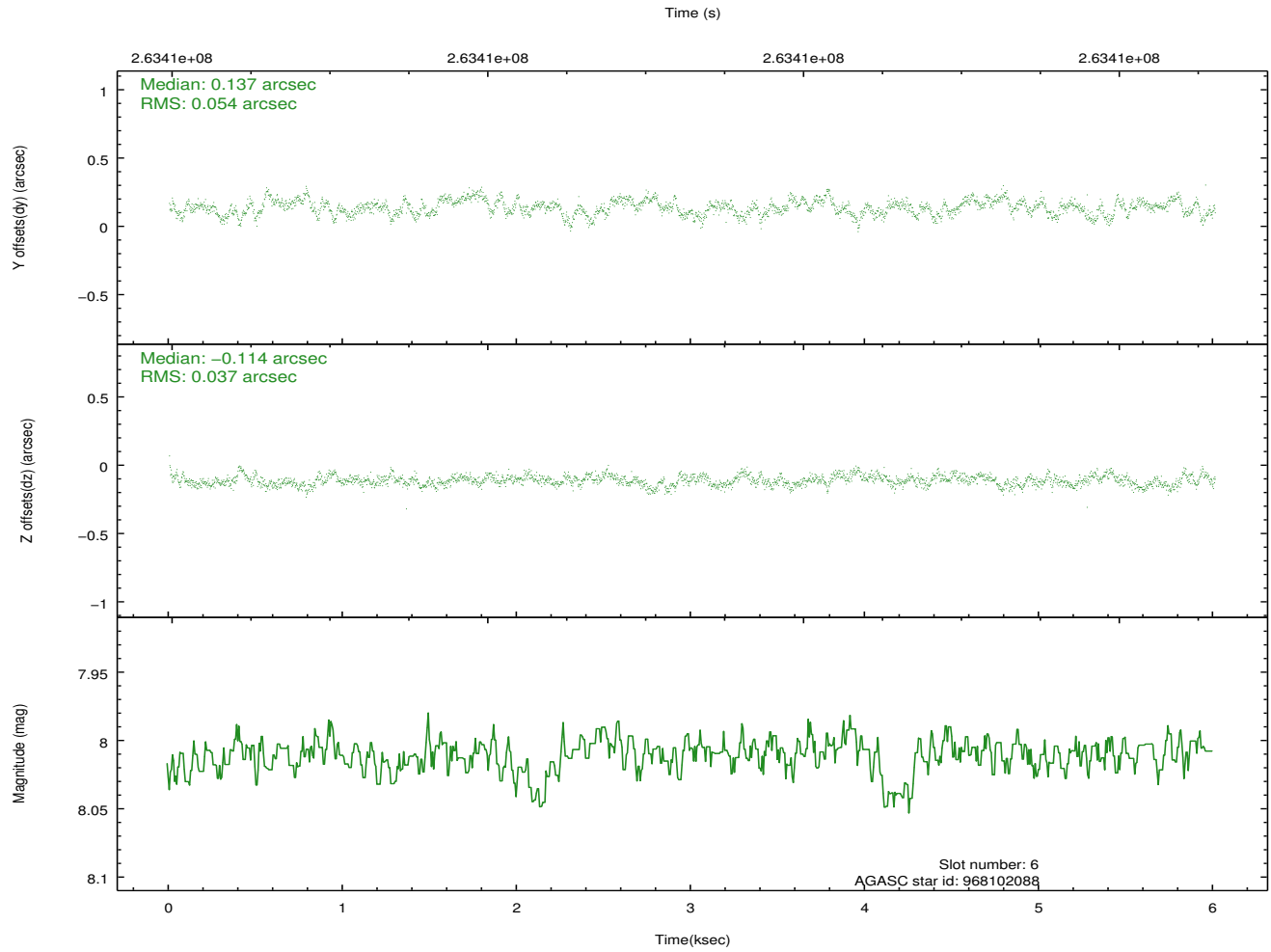
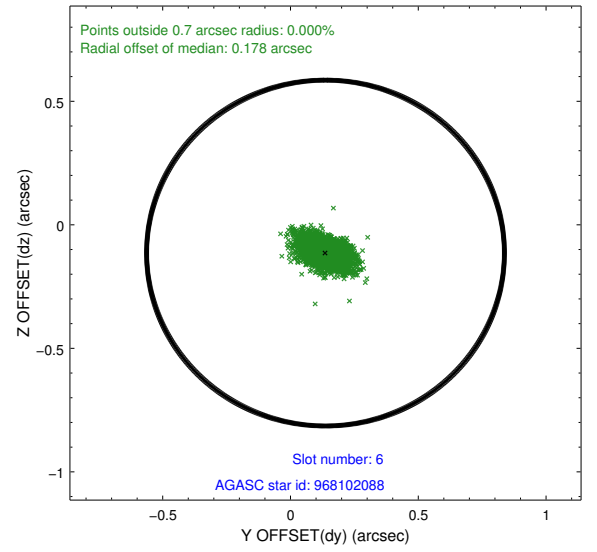
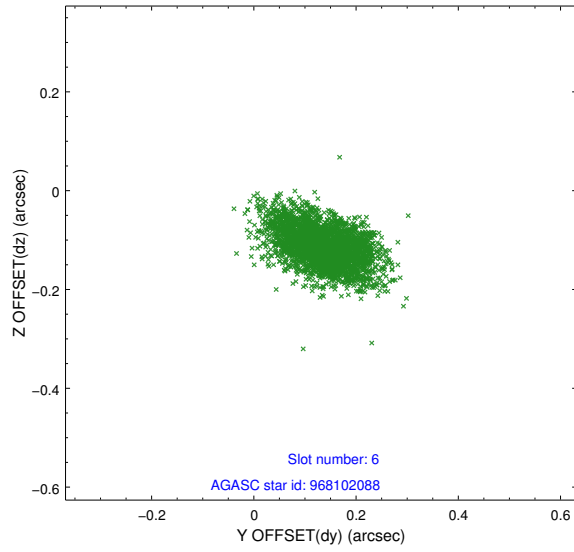
2.4.2 Slot 4



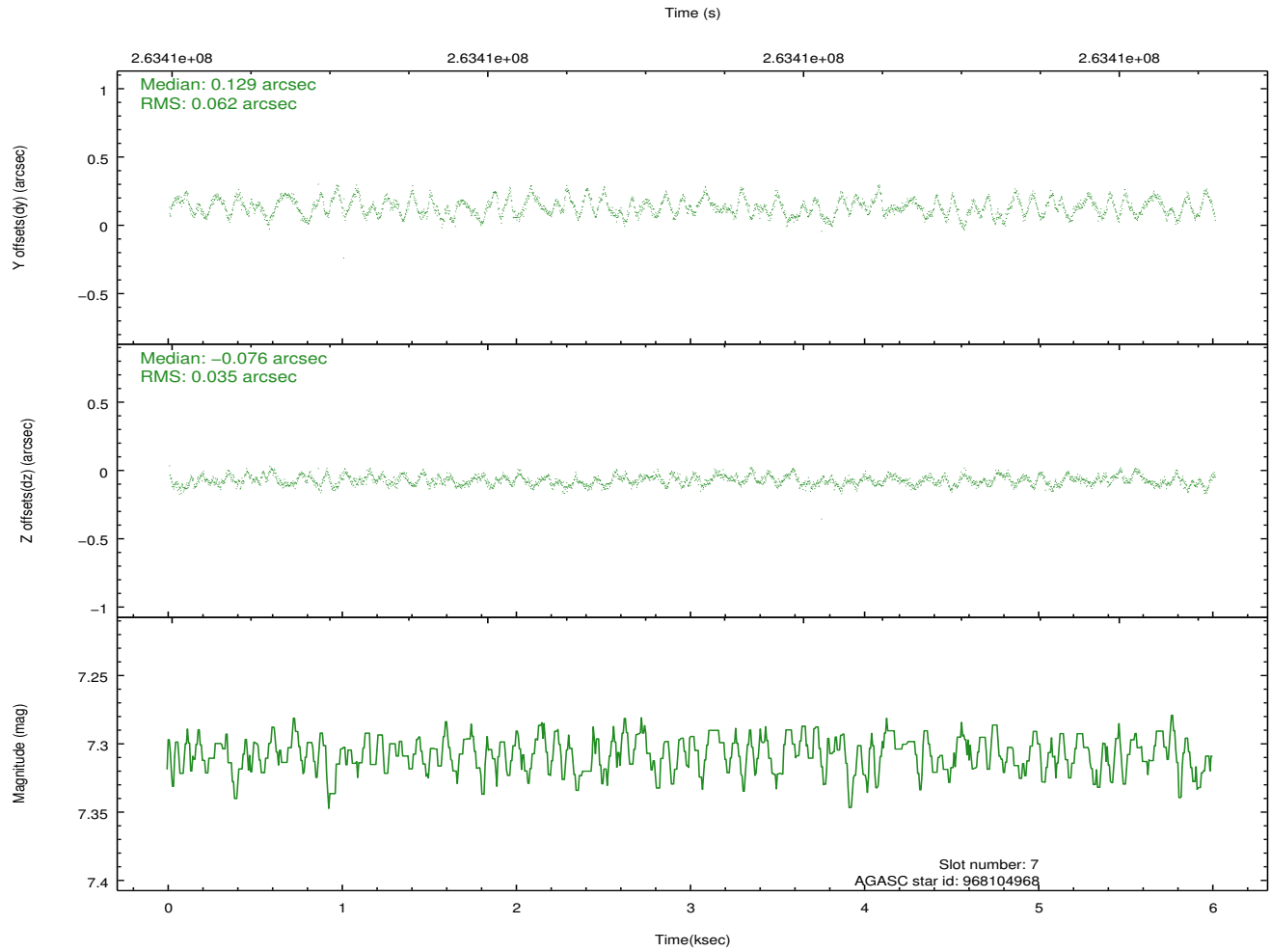
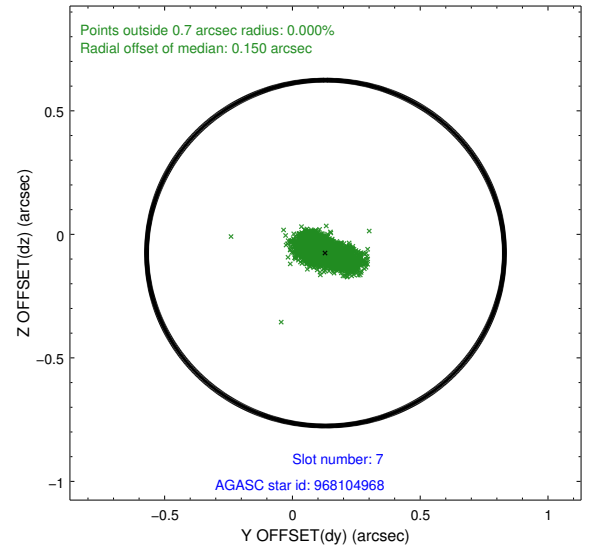
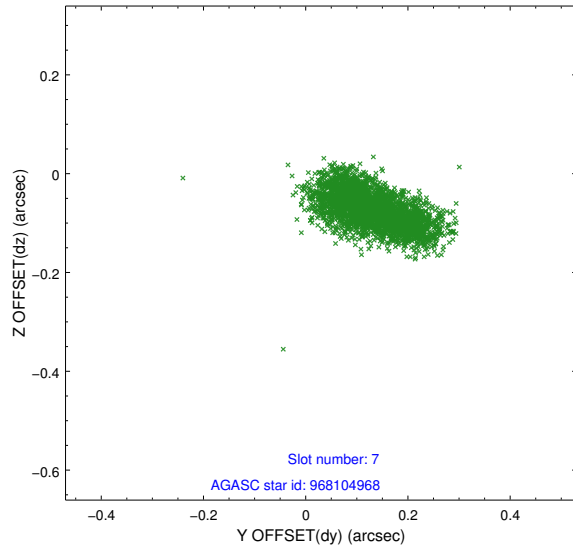
2.4.3 Slot 5



2.4.4 Slot 6

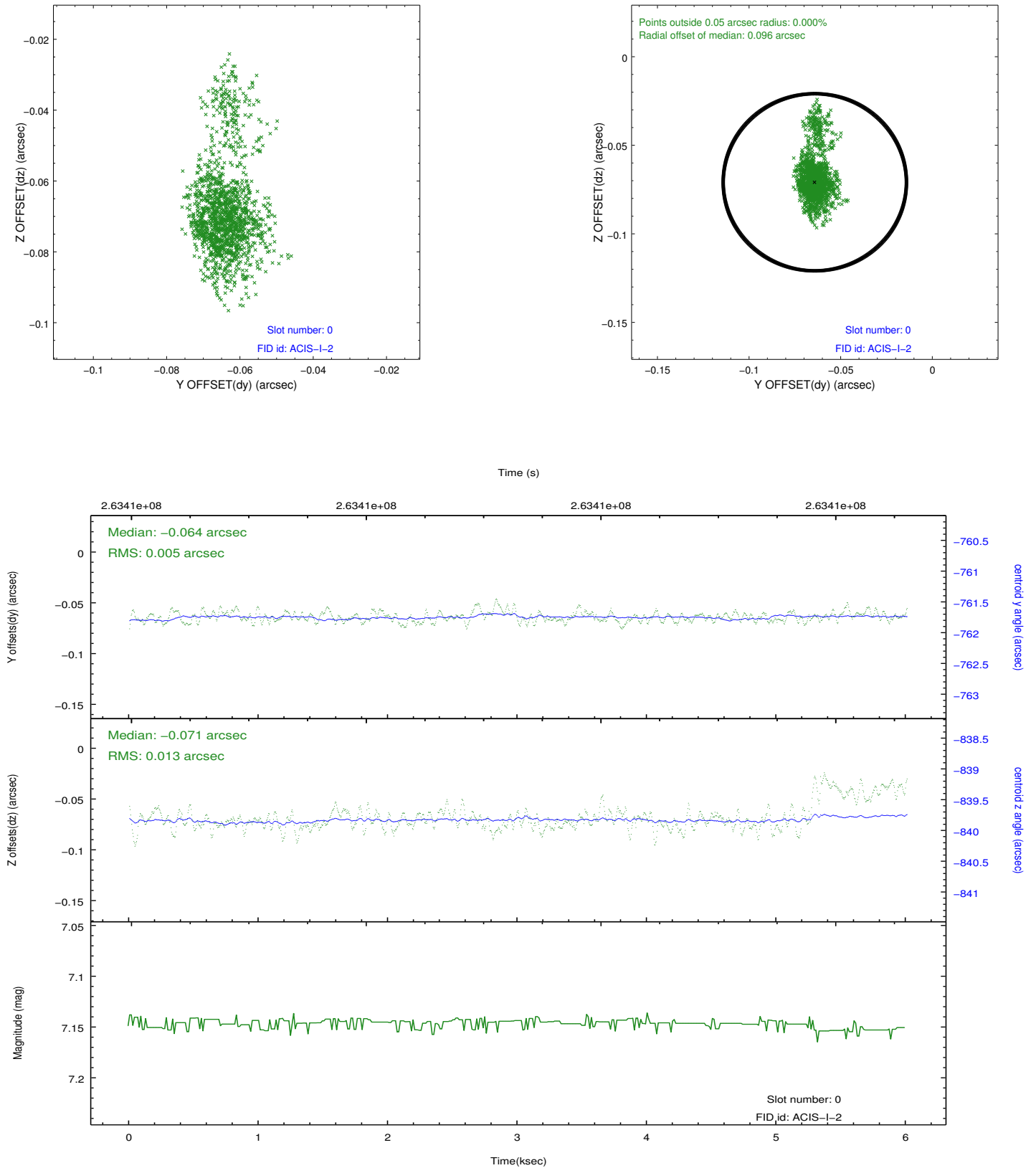


2.4.5 Slot 7

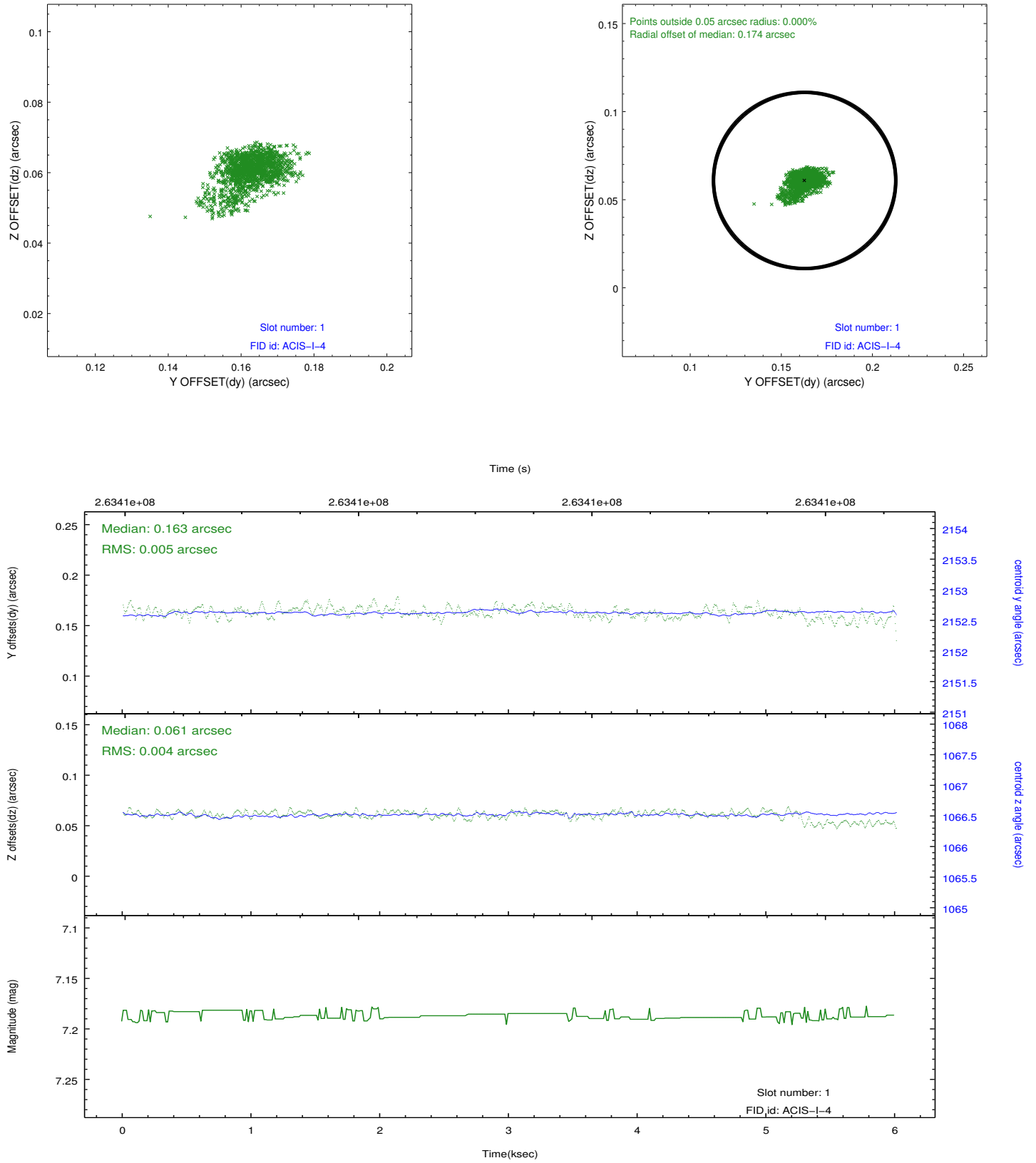


2.5 FID Slots

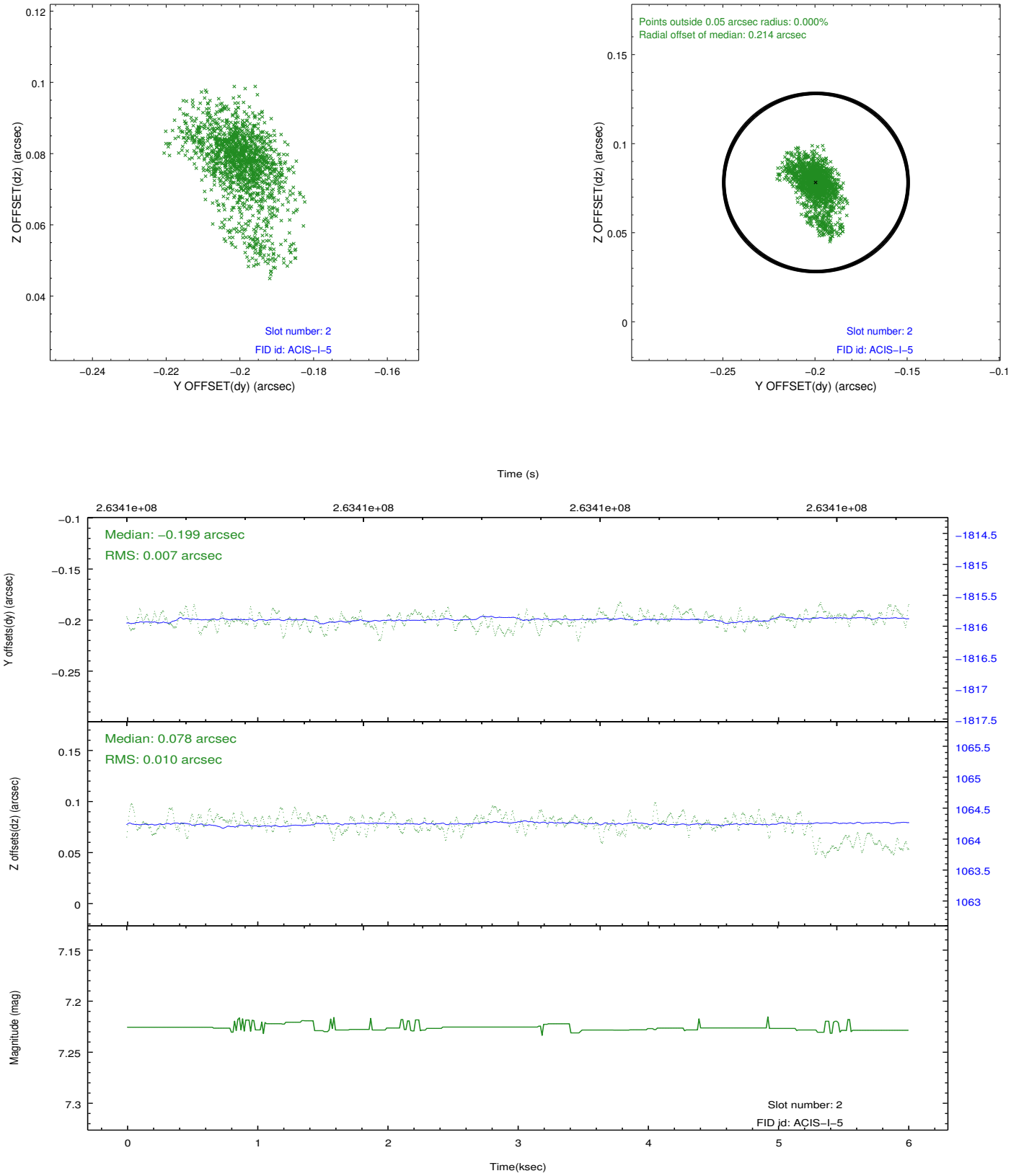
2.5.1 Slot 0



2.5.2 Slot 1



2.5.3 Slot 2



A Summary

A.1 Status

V&V Scientist	Jen Lauer
V&V Date (YYYY-MM-DD)	2012.04.02
V&V Edition	1
V&V Disposition and Status	OK
V&V Charge Time	5.22879998

A.2 Comments