

# V&V Reference Report

## L2 ASCDS Version : 8.4.5

Observation 658 - L2 Version 3  
Chandra X-Ray Center

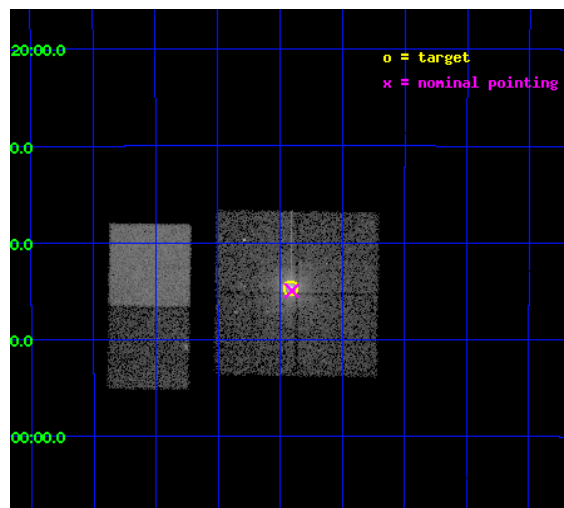
L2 Processing Date : Sep 1 2012

## Contents

<b>1</b>	<b>Front</b>	<b>2</b>
<b>2</b>	<b>OBI</b>	<b>3</b>
2.1	OBI . . . . .	3
2.1.1	Images . . . . .	3
2.1.2	Bias . . . . .	3
2.1.3	Parameters . . . . .	4
2.1.4	Events . . . . .	4
2.2	Compared Parameters . . . . .	5
2.3	Aspect . . . . .	6
2.4	Star Slots . . . . .	9
2.4.1	Slot 3 . . . . .	9
2.4.2	Slot 4 . . . . .	10
2.4.3	Slot 5 . . . . .	11
2.4.4	Slot 6 . . . . .	12
2.4.5	Slot 7 . . . . .	13
2.5	FID Slots . . . . .	14
2.5.1	Slot 0 . . . . .	14
2.5.2	Slot 1 . . . . .	15
2.5.3	Slot 2 . . . . .	16
<b>A</b>	<b>Summary</b>	<b>17</b>
A.1	Status . . . . .	17
A.2	Comments . . . . .	17

# 1 Front

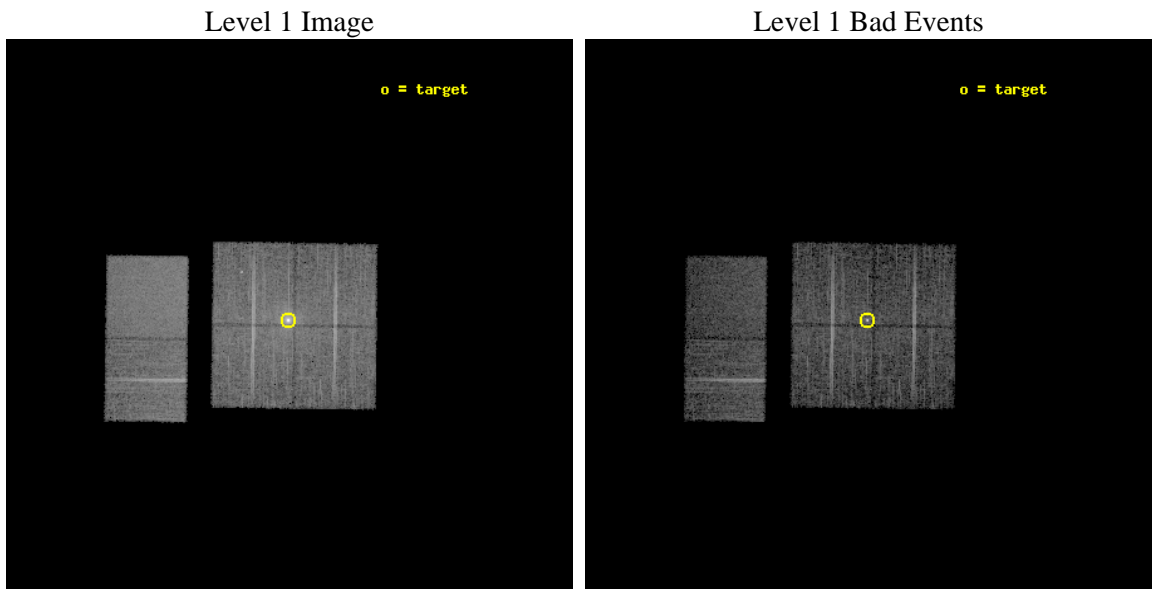
seq_num	400025	Sequence number
obs_id	658	Observation id
title	AN X-RAY IMAGING SURVEY OF JETS FROM X-RAY BINARIES : ENERGETICS OF OUTFLOWS FROM NEUTRON STARS AND BLACK HOLES	Proposal title
observer	Prof. Rob Fender	Principal investigator
object	1E 1740.7-2942	Source name
dtcycle	0	&#160
cycle	P	events from which exps? Prim/Second/Both
ra_targ	265.97853	Observer's specified target RA [deg]
dec_targ	-29.74521	Observer's specified target Dec [deg]
ra_nom	265.9763645168	Nominal RA [deg]
dec_nom	-29.749761190641	Nominal Dec [deg]
roll_nom	270.78929221713	Nominal Roll [deg]
revision	3	Processing version of data
ontime	9353.6000086963	Sum of GTIs [s]
livetime	9235.1590933245	Livetime [s]
ontime0	9350.359048456	Sum of GTIs [s]
ontime1	9347.1180882007	Sum of GTIs [s]
ontime2	9353.6000086963	Sum of GTIs [s]
ontime3	9353.6000086963	Sum of GTIs [s]
ontime6	9353.6000086963	Sum of GTIs [s]
ontime7	9353.6000086963	Sum of GTIs [s]
l2events	87476	Number of level 2 events



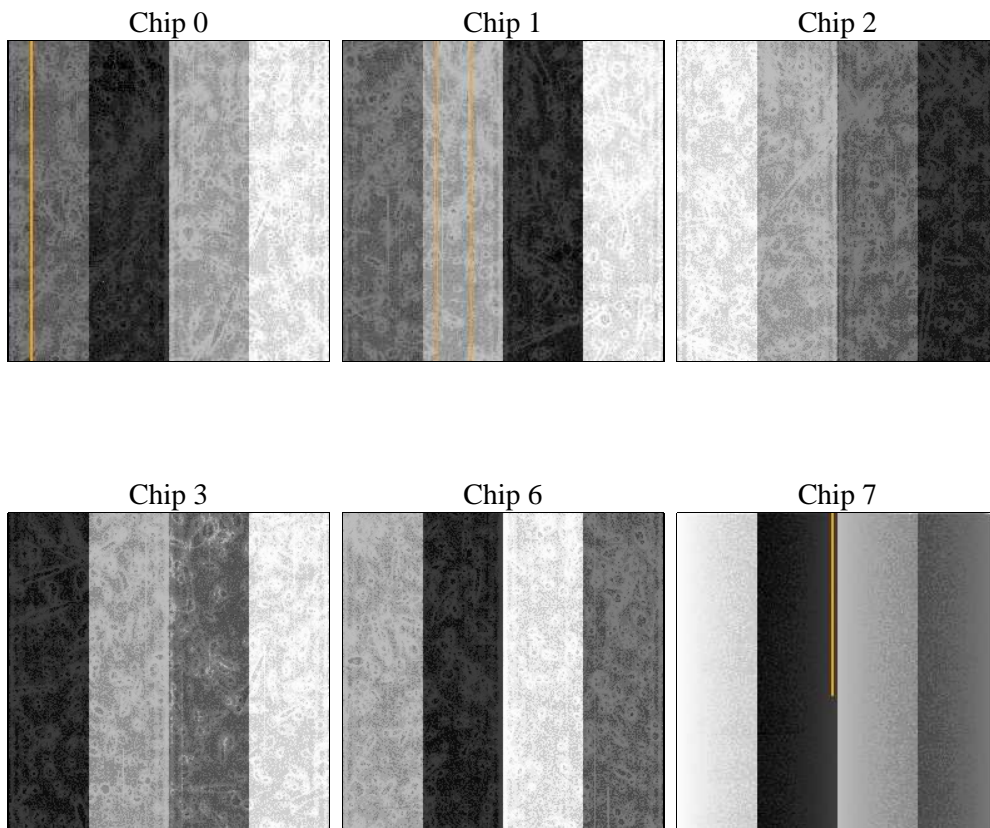
## 2 OBI

### 2.1 OBI

#### 2.1.1 Images



#### 2.1.2 Bias



### 2.1.3 Parameters

obi_num	0	Obi number	sched_exp_time	9600.000000	[s] Scheduled observation exposure time
ascdsver	8.4.5	Processing system revision	ontime	9353.6000086963	Sum of GTIs [s]
caldsver	4.5.1.1	&#160	ontime0	9350.359048456	Sum of GTIs [s]
date	2012-09-01T03:43:09	Date and time of file creation	ontime1	9347.1180882007	Sum of GTIs [s]
revision	3	Processing version of data	ontime2	9353.6000086963	Sum of GTIs [s]
			ontime3	9353.6000086963	Sum of GTIs [s]
			ontime6	9353.6000086963	Sum of GTIs [s]
			ontime7	9353.6000086963	Sum of GTIs [s]
			l1events	375051	Number of level 1 events

### 2.1.4 Events

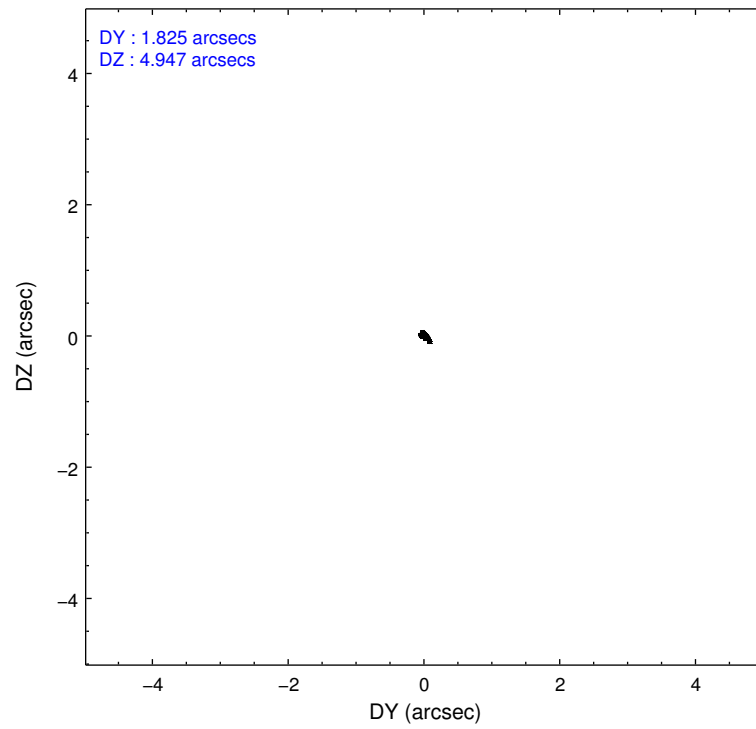
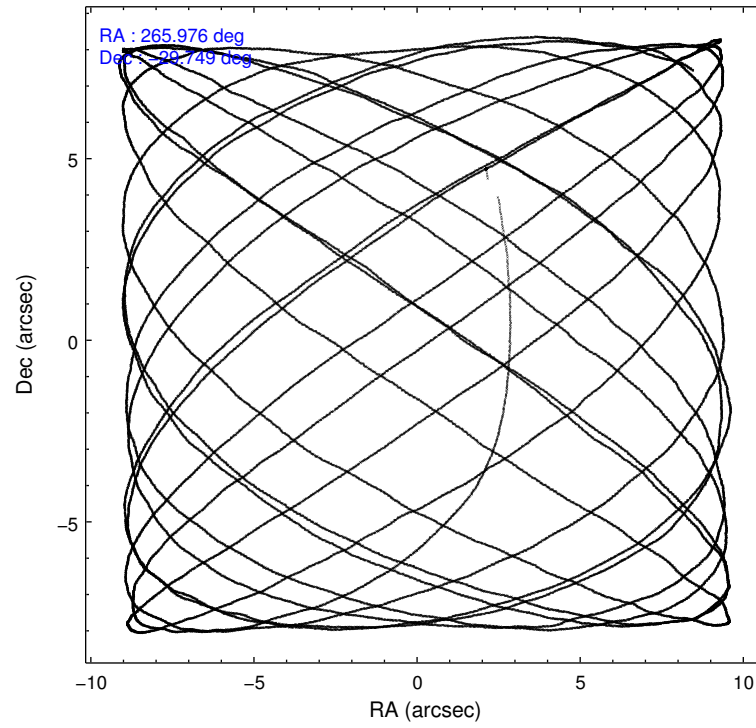
	ccd 0	ccd 1	ccd 2	ccd 3	ccd 6	ccd 7		ccd 0	ccd 1	ccd 2	ccd 3	ccd 6	ccd 7
level 1 events	53665	55470	59866	74206	59708	72136	grade 0 events	5034	6132	5317	13367	3639	3362
rejected events	44039	43970	49782	51320	51952	39640		9%	11%	8%	18%	6%	4%
rejected %	82%	79%	83%	69%	87%	54%	grade 1 events	42	45	39	302	39	65
								0%	0%	0%	0%	0%	0%
							grade 2 events	1745	1969	1835	3866	1401	6388
								3%	3%	3%	5%	2%	8%
							grade 3 events	823	955	816	1410	719	2966
								1%	1%	1%	1%	1%	4%
							grade 4 events	795	887	742	1409	717	2896
								1%	1%	1%	1%	1%	4%
							grade 5 events	1964	2087	1829	2489	2363	6706
								3%	3%	3%	3%	3%	9%
							grade 6 events	1237	1565	1382	2849	1287	16914
								2%	2%	2%	3%	2%	23%
							grade 7 events	42025	41830	47906	48514	49543	32839
								78%	75%	80%	65%	82%	45%

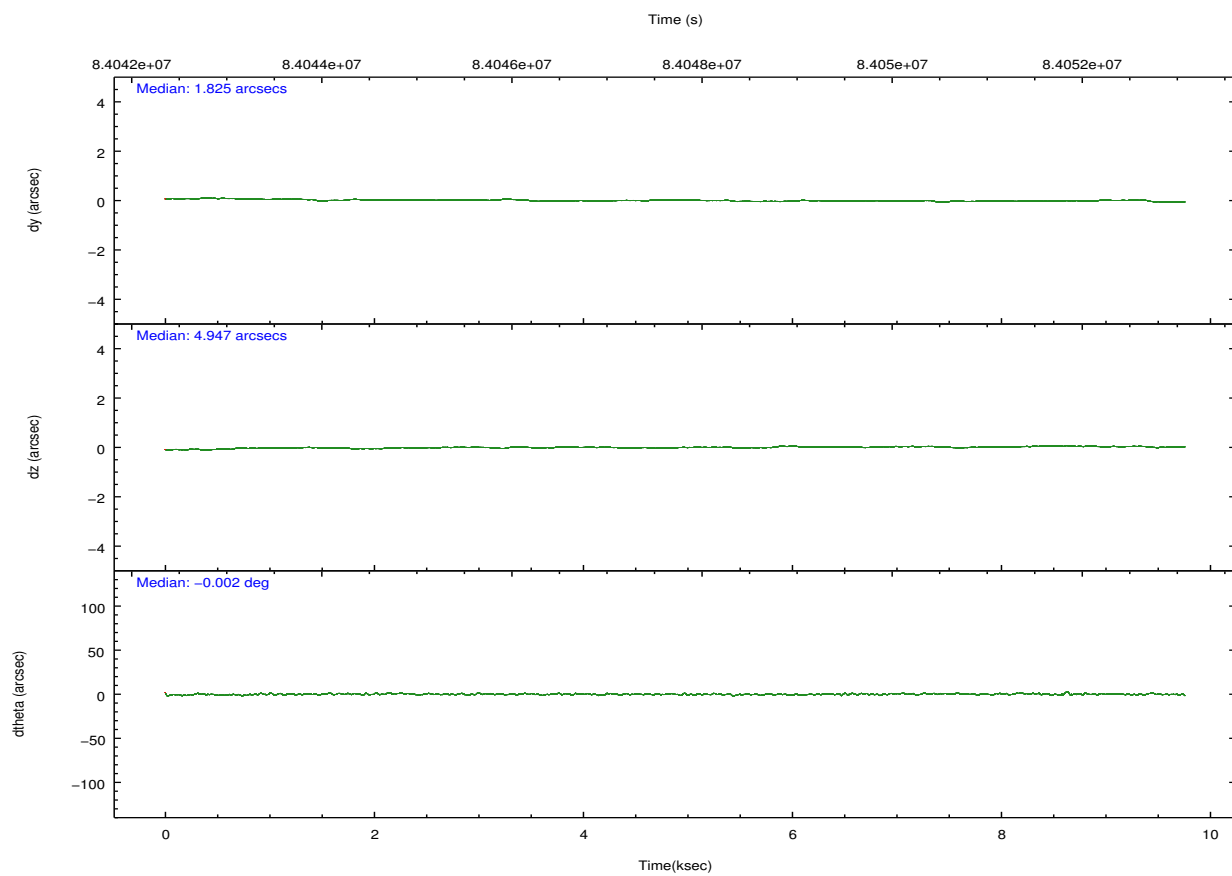
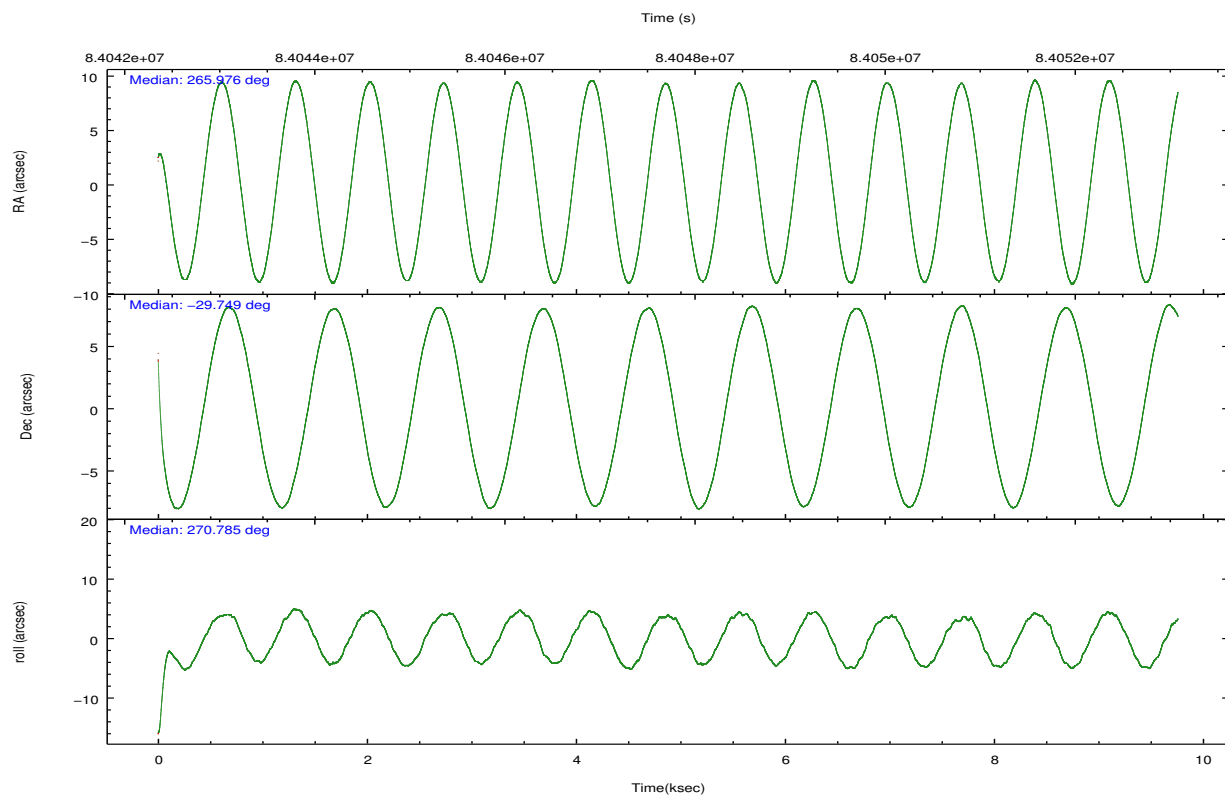


## 2.2 Compared Parameters

Parameter	Planned	Actual	Parameter	Planned	Actual
Instrument	ACIS	ACIS	Obspar format version number	7	7
Detector	ACIS-012367	ACIS-012367	Obspar file type	PREDICTED	ACTUAL
Grating	NONE	NONE	Obspar update status	NONE	UPDATED
Data mode	VFAINT	VFAINT	Number of optional ACIS chips dropped	0	0
Observation mode	POINTING	POINTING	On-chip summing requested	N	N
[deg] Pointing RA	265.960266	265.9763645167982	Subarray requested	NONE	NONE
[deg] Pointing Dec	-29.726033	-29.74976119064088	Alternating exposures requested	N	N
[deg] Pointing Roll	270.572632	270.789292217127	[s] Primary exposure time	0.000000	3.2
[mm] SIM focus pos	-0.782348	-0.7809083437167272			
[mm] SIM defocus	0	0.001439871863259334			
[mm] SIM translation stage pos	-233.592463	-233.5874344608287			
[mm] SIM translation stage offset	0	-0.005018542100998502			
[s] Observation start time (MET)	84042997.184000	84041972.509902			
Observation start date	2000-08-30T17:15:33	2000-08-30T16:59:32			
[s] Observation end time (MET)	84052597.184000	84052802.147808			
Observation end date	2000-08-30T19:55:33	2000-08-30T20:00:02			
Read mode	TIMED	TIMED			

## 2.3 Aspect



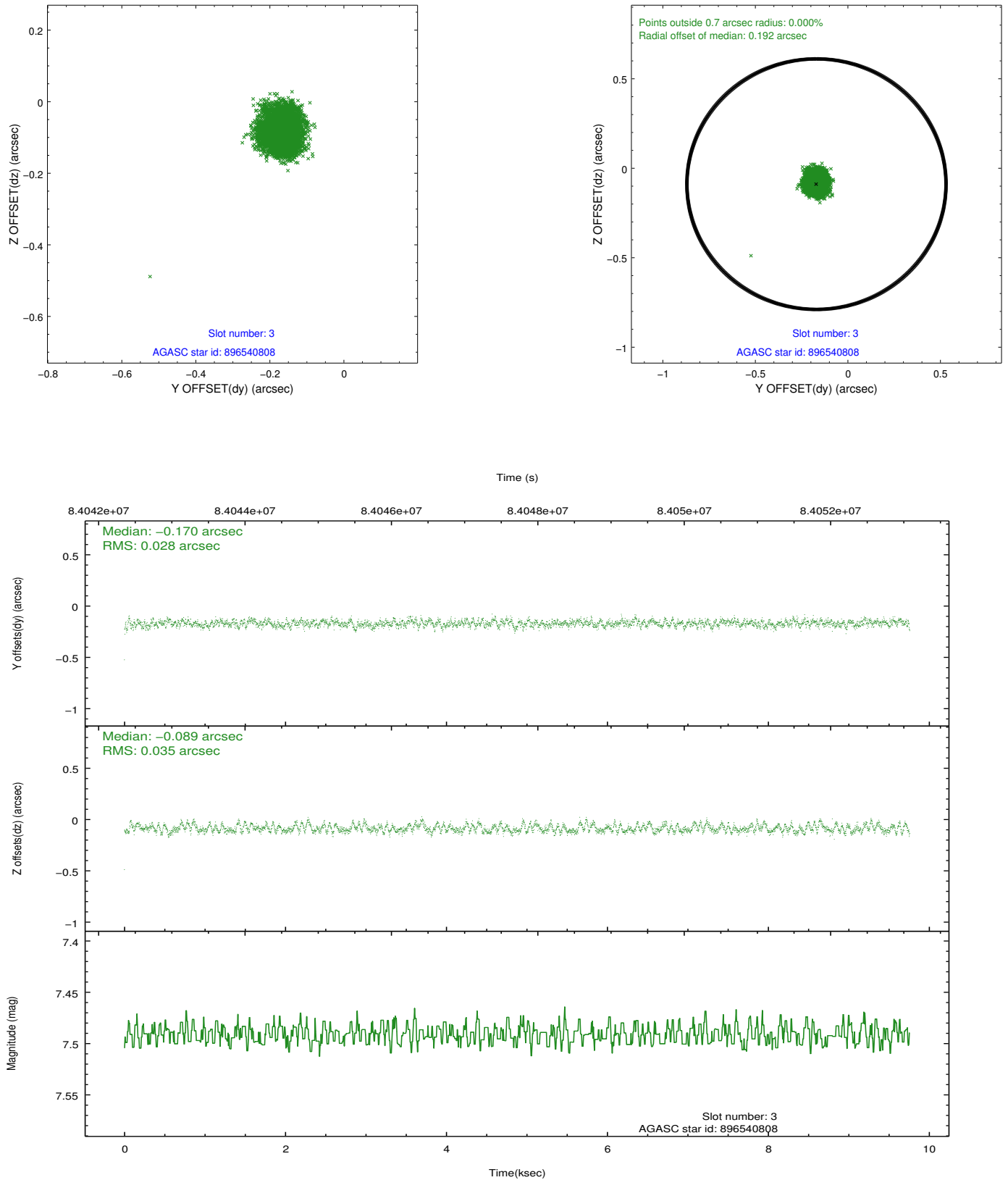


### Slot Statistics

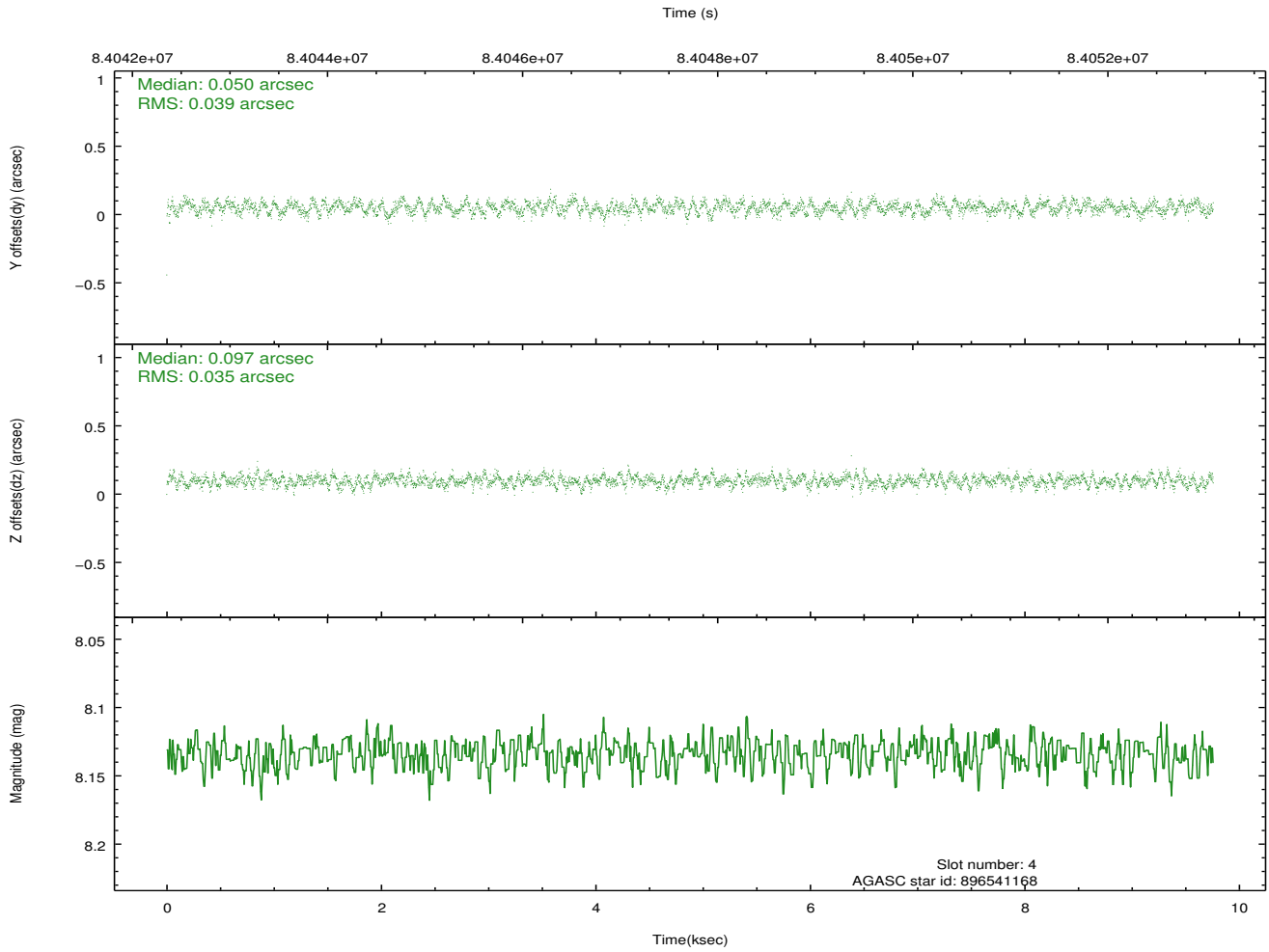
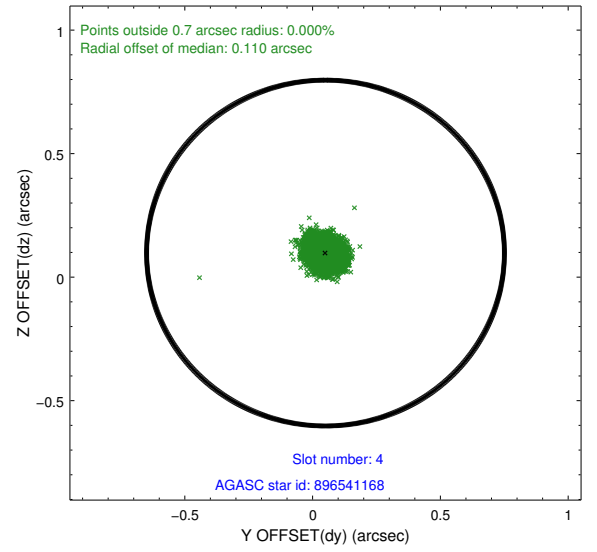
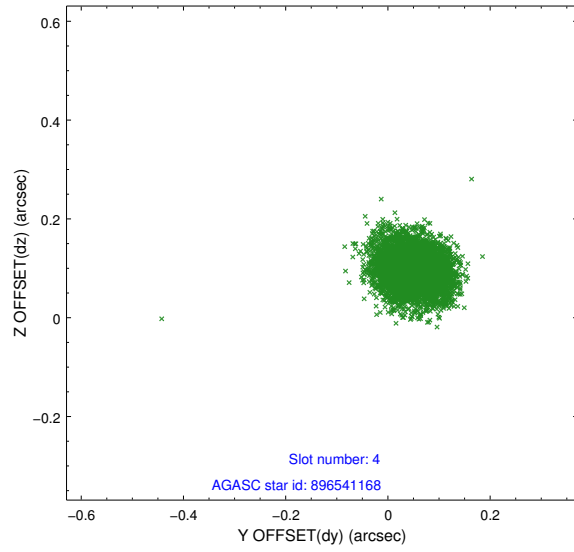
slot	status	id	mag	n_pts	med_dy	med_dz	dr1	dr2	ra	dec	mean_y	mean_z
0	FID	ACIS-I-2	7.15	2381	-0.041	-0.036	0.009	0.016	0.000000	0.000000	-756.22	-834.68
1	FID	ACIS-I-4	7.19	2380	-0.013	0.041	0.006	0.010	0.000000	0.000000	2157.62	1071.29
2	FID	ACIS-I-5	7.23	2380	-0.047	0.064	0.009	0.015	0.000000	0.000000	-1809.34	1069.79
3	GUIDE	896540808	7.49	4759	-0.170	-0.089	0.047	0.076	265.985401	-29.308604	-1500.90	93.91
4	GUIDE	896541168	8.13	4761	0.050	0.097	0.056	0.087	266.319970	-29.850801	462.93	1118.91
5	GUIDE	896538920	8.90	4758	-0.108	0.056	0.059	0.097	266.278728	-29.143592	-2084.26	1022.59
6	GUIDE	966918832	8.71	4758	0.174	0.044	0.057	0.092	266.278876	-30.183148	1657.63	975.60
7	GUIDE	966787648	8.89	4758	0.052	-0.111	0.070	0.113	265.297931	-30.077843	1253.53	-2075.58

## 2.4 Star Slots

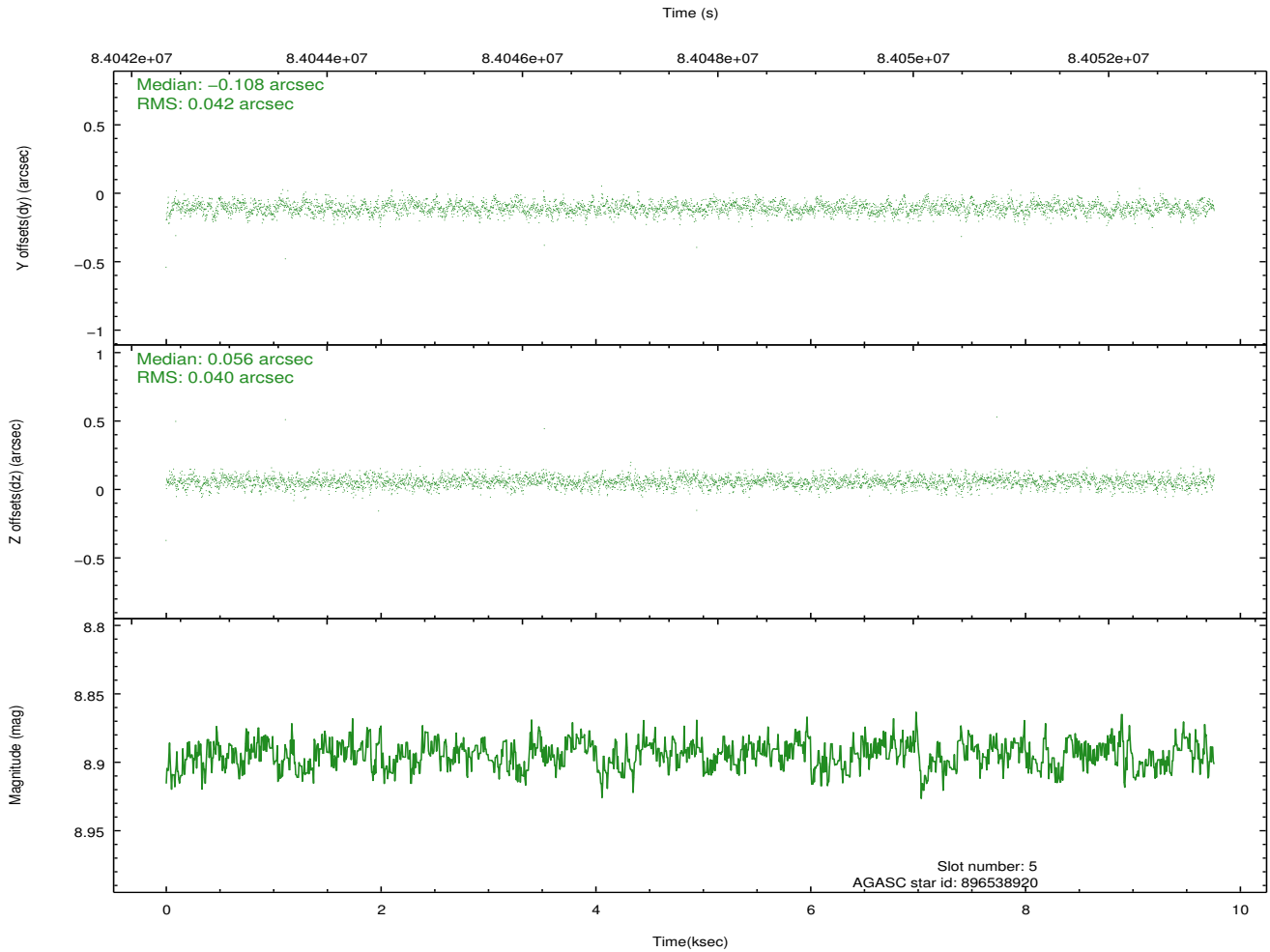
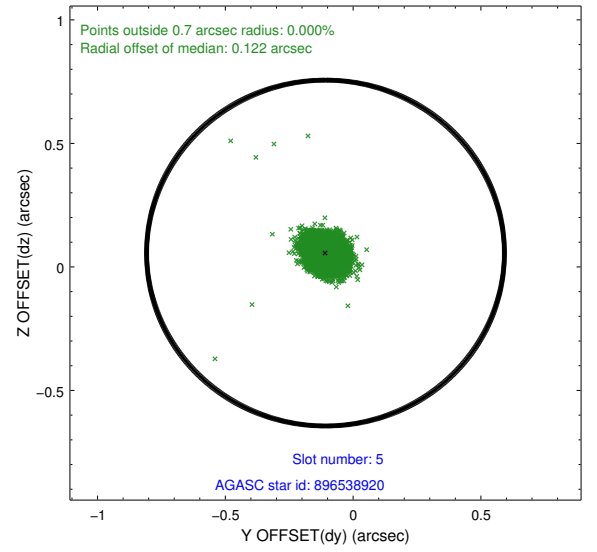
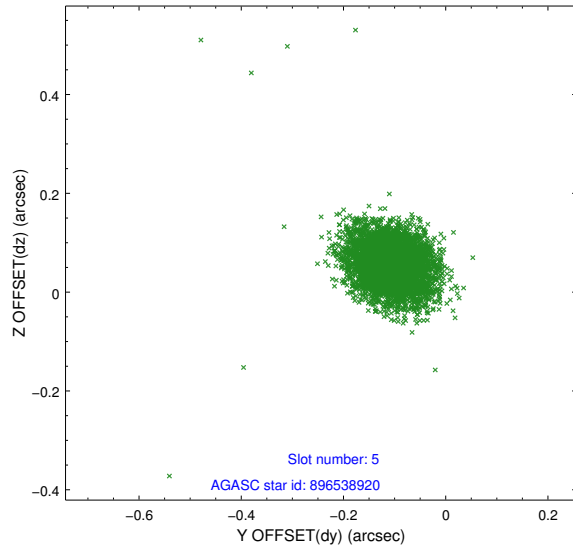
### 2.4.1 Slot 3



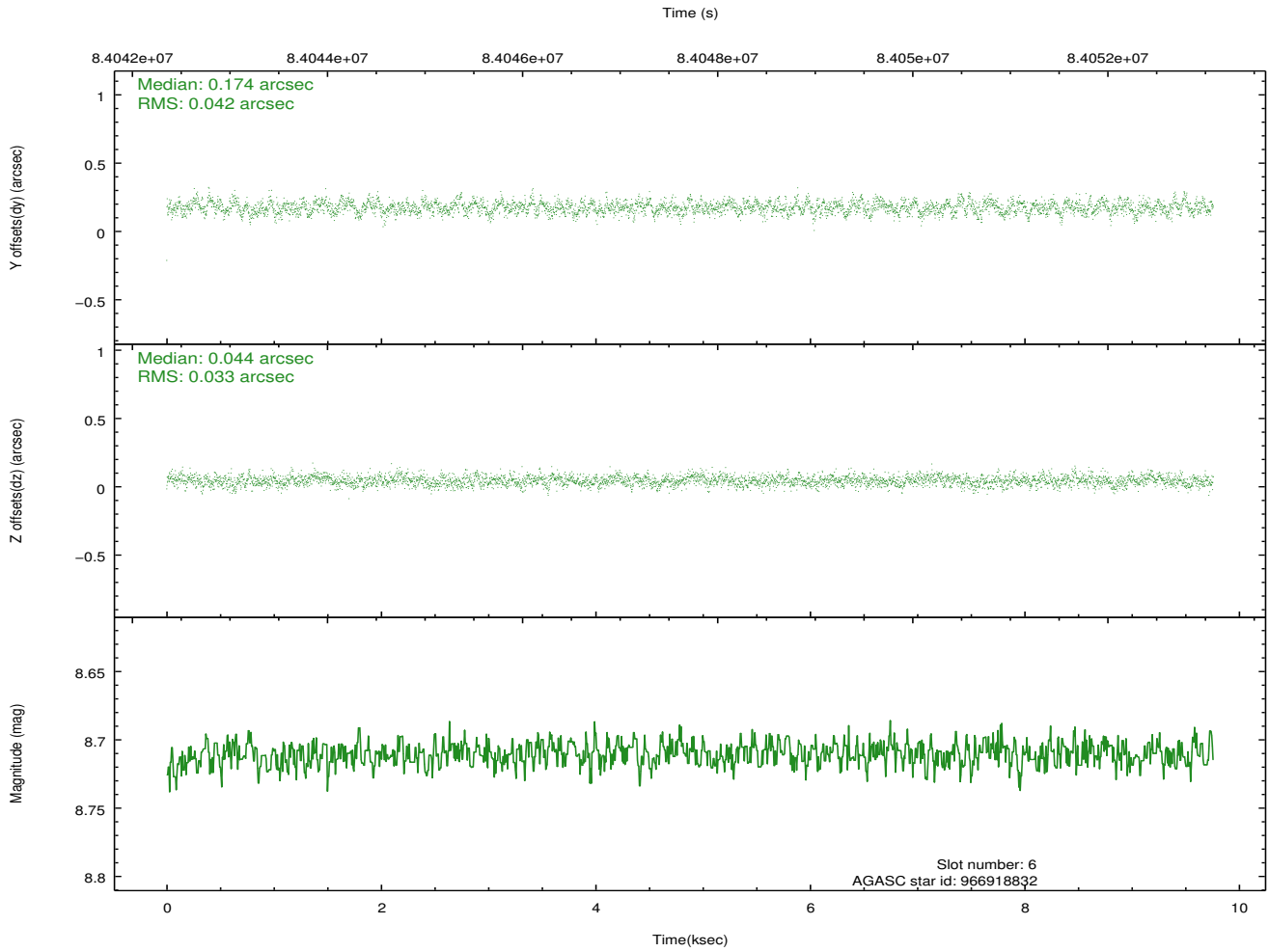
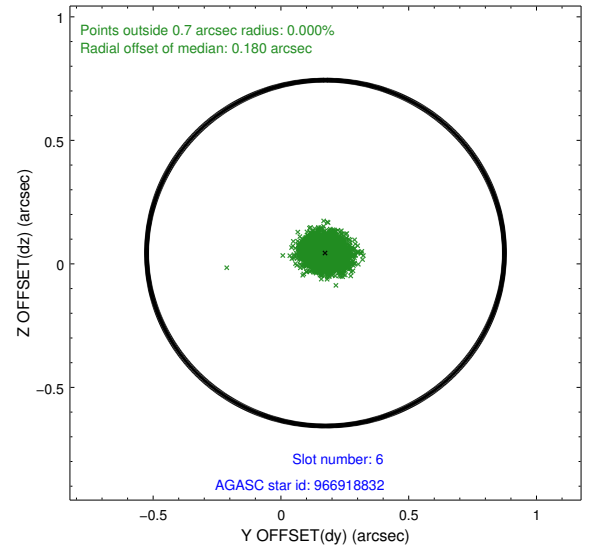
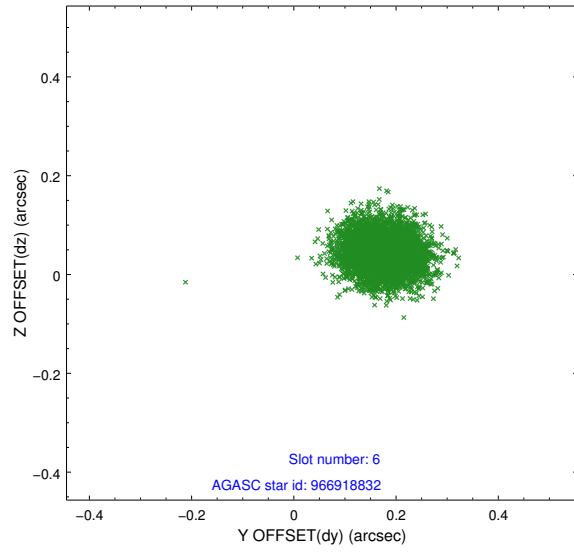
## 2.4.2 Slot 4



### 2.4.3 Slot 5

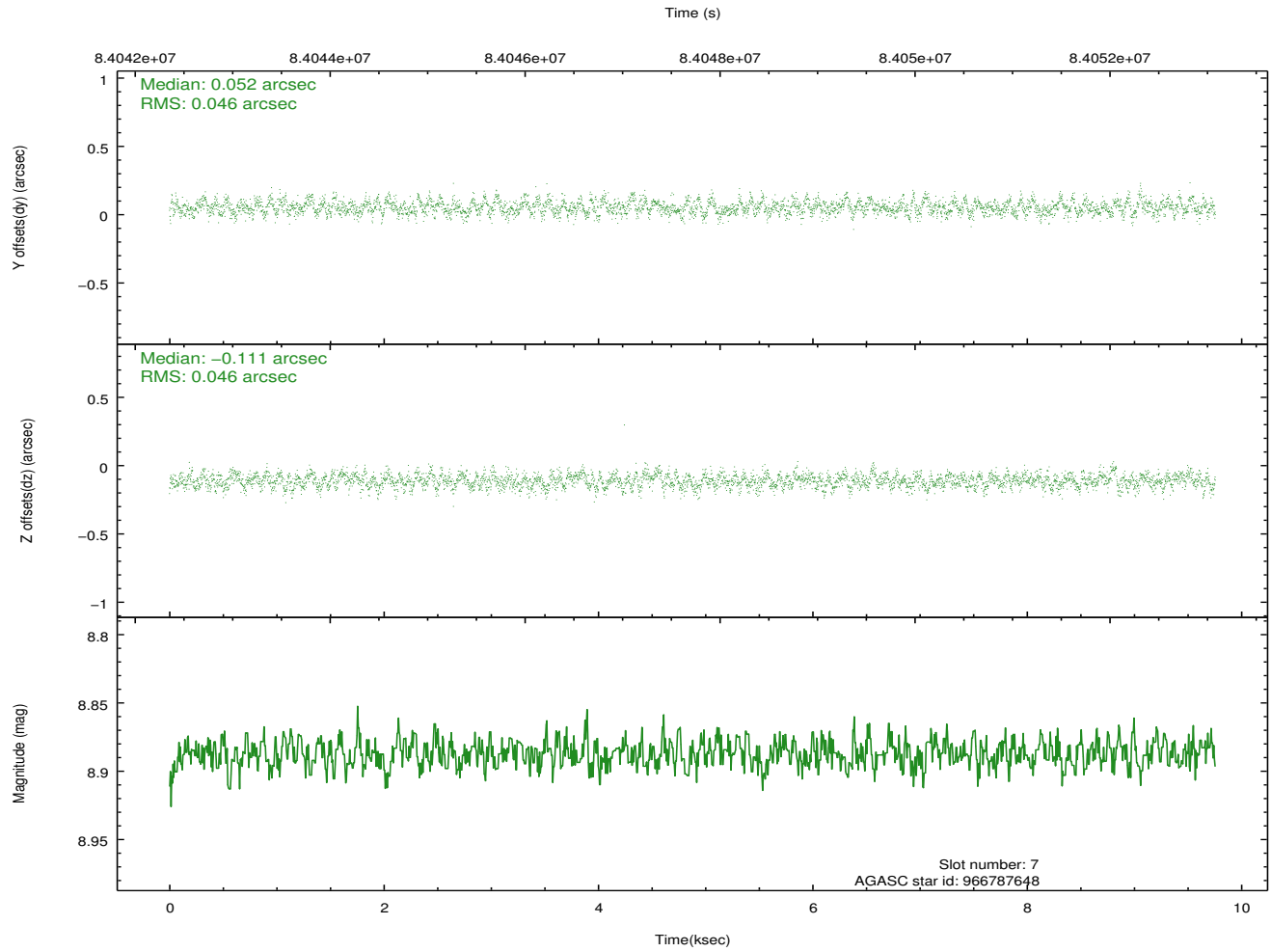
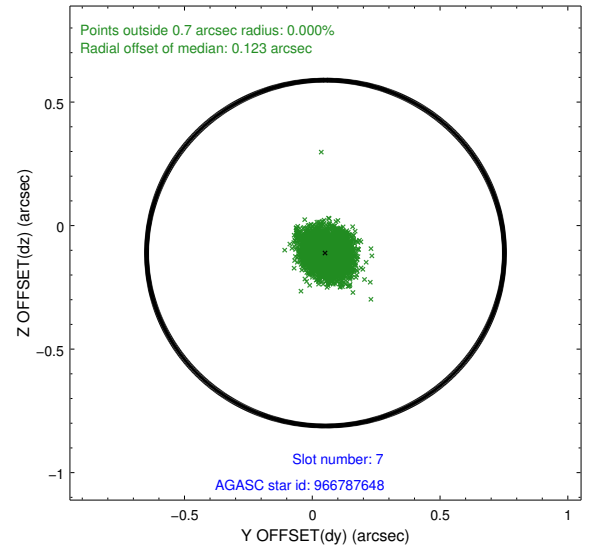
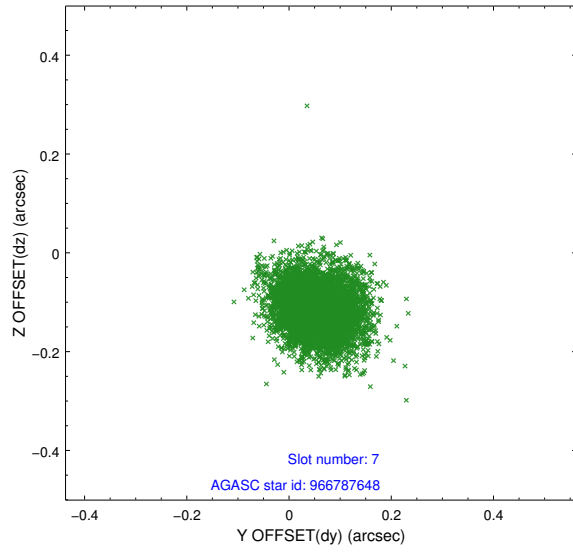


## 2.4.4 Slot 6



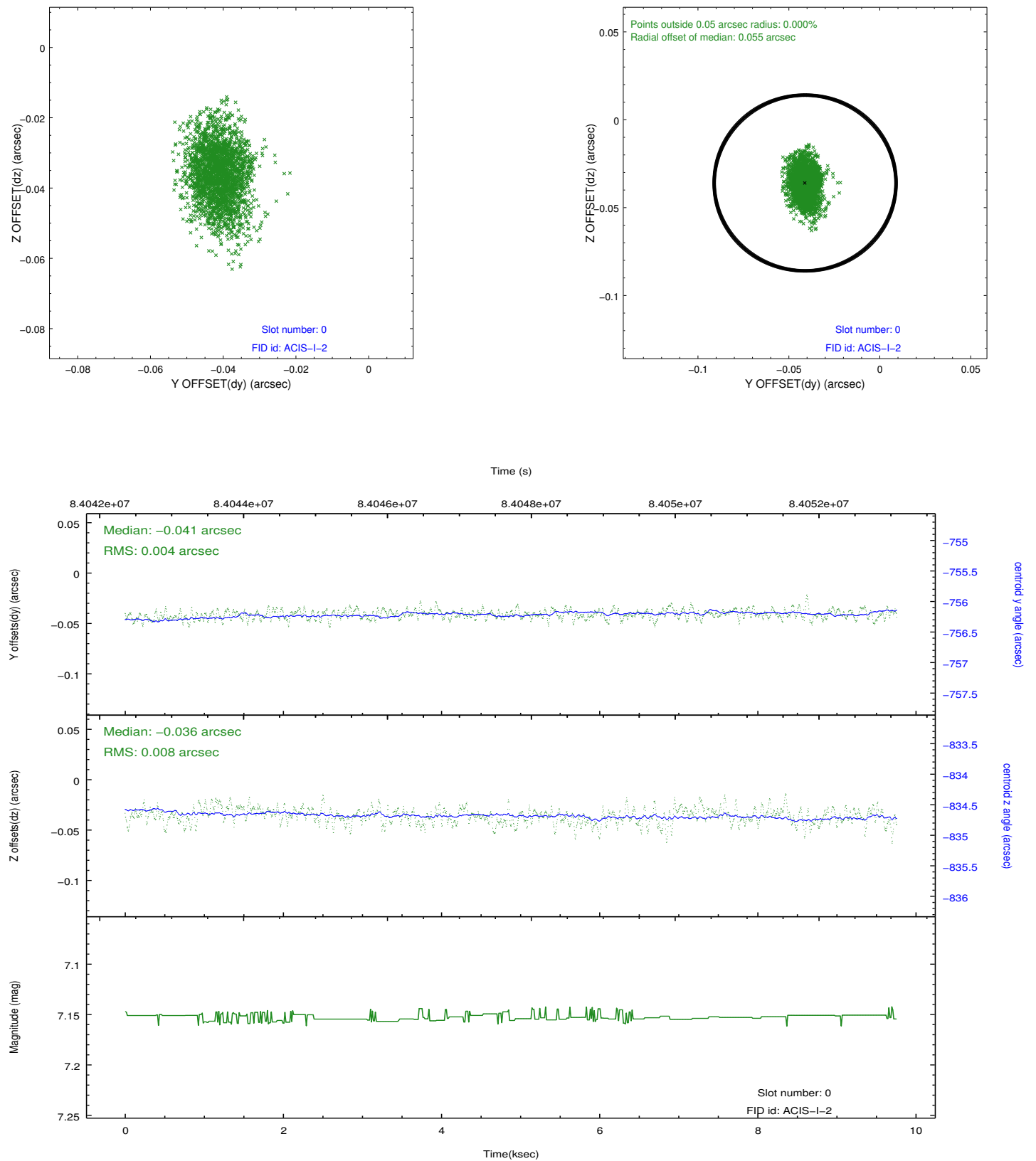


### 2.4.5 Slot 7

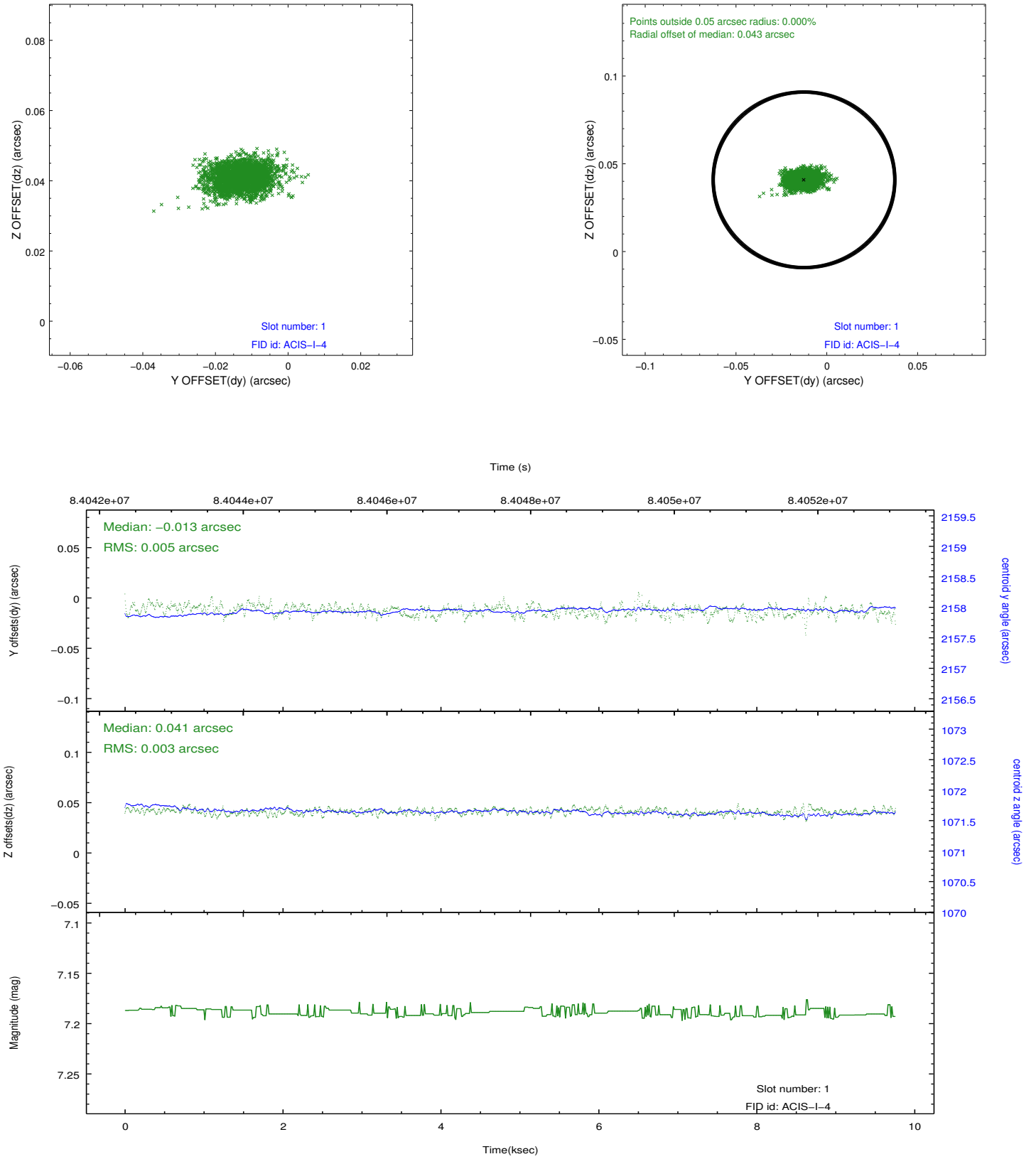


## 2.5 FID Slots

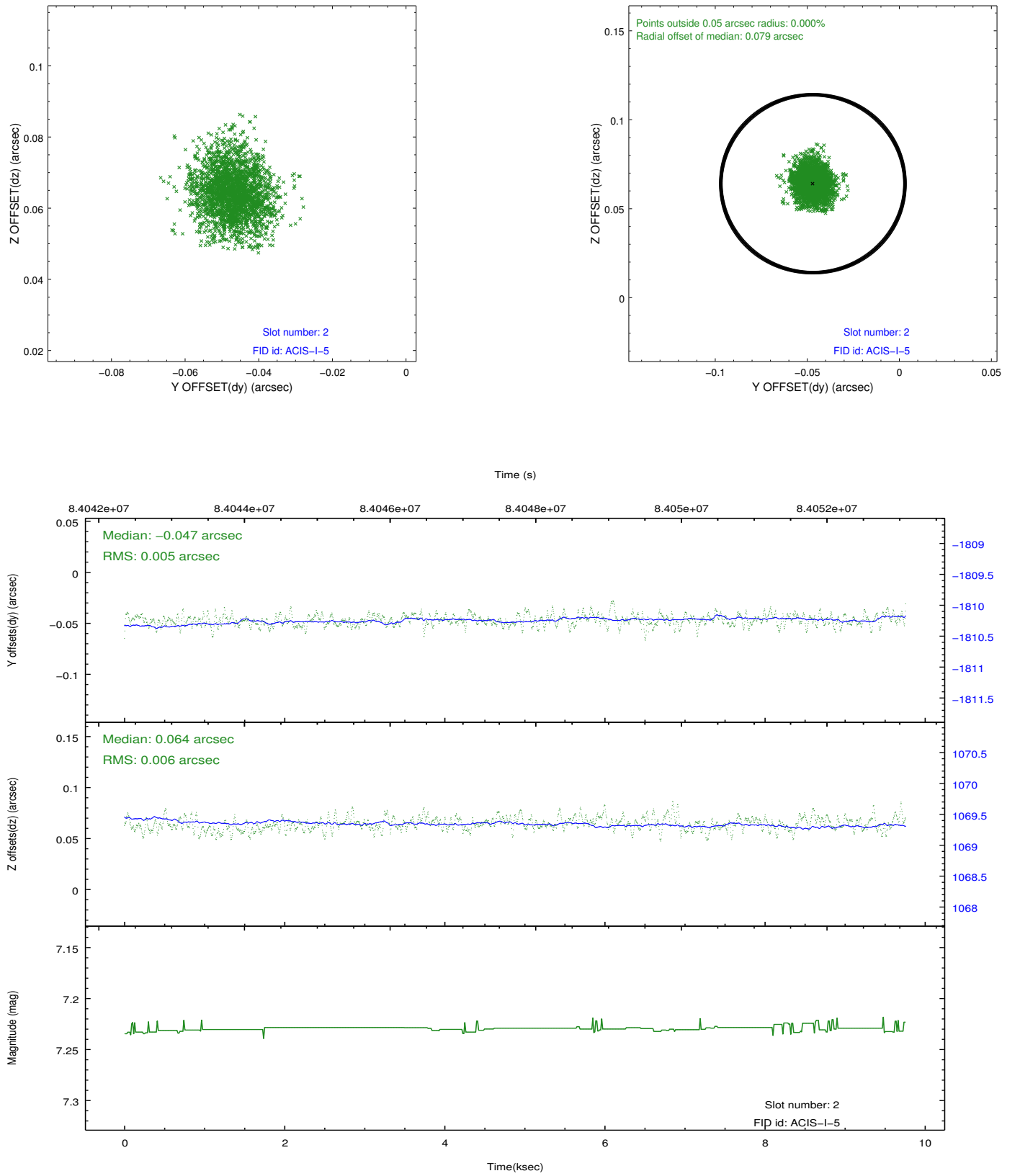
### 2.5.1 Slot 0



## 2.5.2 Slot 1



### 2.5.3 Slot 2



## A Summary

### A.1 Status

V&V Scientist	Beth Sundheim
V&V Date (YYYY-MM-DD)	2012.09.06
V&V Edition	1
V&V Disposition and Status	OK
V&V Charge Time	9.356

### A.2 Comments