

# V&V Reference Report

## L2 ASCDS Version : 8.4.5

Observation 62878 - L2 Version 5  
Chandra X-Ray Center

L2 Processing Date : Aug 29 2012

## Contents

<b>1</b>	<b>Front</b>	<b>2</b>
<b>2</b>	<b>OBI</b>	<b>3</b>
2.1	OBI . . . . .	3
2.1.1	Images . . . . .	3
2.1.2	Bias . . . . .	3
2.1.3	Parameters . . . . .	4
2.1.4	Events . . . . .	4
2.2	Compared Parameters . . . . .	5
2.3	Star Slots . . . . .	6
2.4	FID Slots . . . . .	6
<b>A</b>	<b>Summary</b>	<b>7</b>
A.1	Status . . . . .	7
A.2	Comments . . . . .	7

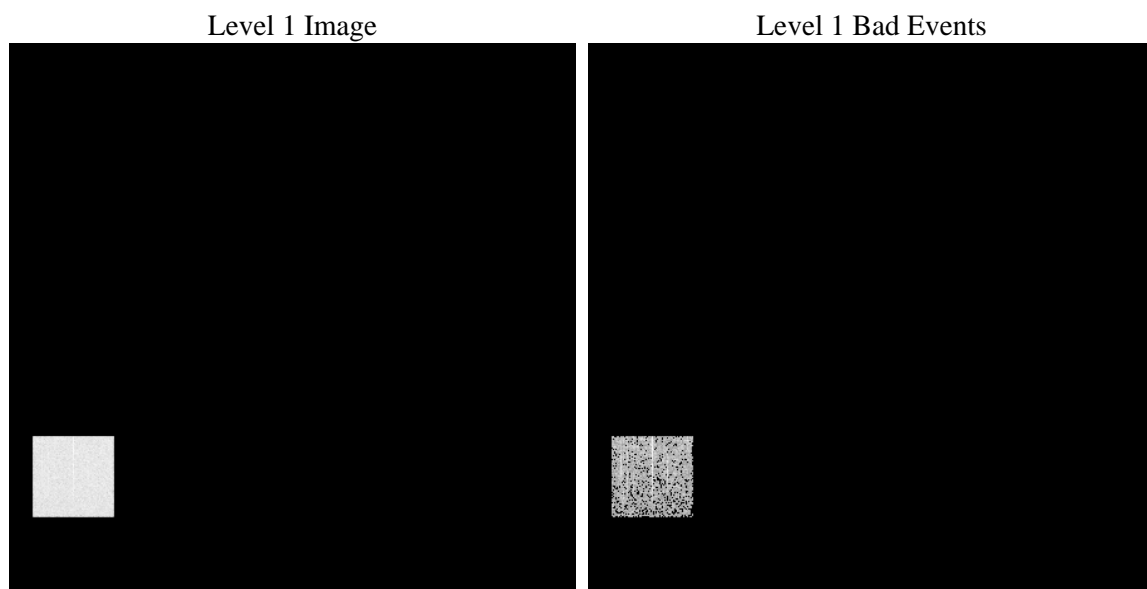
# 1 Front

seq_num	&#160	Sequence number
obs_id	62878	Observation id
title	ACIS-4 diagnostics; squeegee VI, non-squeegee run	Proposal title
observer	CHANDRA engineering request/realtime commanding	Principal investig
object	&#160	Source name
dtcycle	0	&#160
cycle	P	events from which exps? Prim/Second/Both
ra_targ	0.0	Observer's specified target RA [deg]
dec_targ	0.0	Observer's specified target Dec [deg]
ra_nom	90.142693193466	Nominal RA [deg]
dec_nom	-70.157561874749	Nominal Dec [deg]
roll_nom	185.2560344145	Nominal Roll [deg]
revision	5	Processing version of data
ontime	1203.4390447736	Sum of GTIs [s]
livetime	1188.6564805428	Livetime [s]
ontime4	1203.4390447736	Sum of GTIs [s]
l2events	83997	Number of level 2 events

## 2 OBI

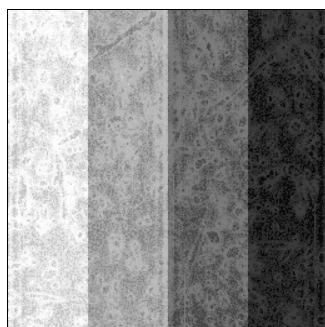
### 2.1 OBI

#### 2.1.1 Images



#### 2.1.2 Bias

Chip 4



### 2.1.3 Parameters

obi_num	0	Obi number	sched_exp_time	0.0	[s] Scheduled observation exposure time
ascdsver	8.4.5	Processing system revision	ontime	1203.4390447736	Sum of GTIs [s]
caldsver	4.5.1.1	&#160	ontime4	1203.4390447736	Sum of GTIs [s]
date	2012-08-29T08:03:12	Date and time of file creation	l1events	105447	Number of level 1 events
revision	5	Processing version of data			

### 2.1.4 Events

	<b>ccd 4</b>
level 1 events	105447
rejected events	11145
rejected %	10%

	<b>ccd 4</b>
grade 0 events	53429
	50%
grade 1 events	279
	0%
grade 2 events	16607
	15%
grade 3 events	5907
	5%
grade 4 events	5770
	5%
grade 5 events	706
	0%
grade 6 events	12841
	12%
grade 7 events	9908
	9%

## 2.2 Compared Parameters

Parameter	Planned	Actual	Parameter	Planned	Actual
Instrument	ACIS	ACIS	Obspar format version number	7	7
Detector	ACIS-4	ACIS-4	Obspar file type	PREDICTED	ACTUAL
Grating	NONE	NONE	Obspar update status	NONE	UPDATED
Data mode	FAINT	FAINT	On-chip summing requested	N	N
Observation mode	SECONDARY	SECONDARY	Subarray requested	NONE	NONE
[deg] Pointing RA	0	90.1426931934658	Alternating exposures requested	N	N
[deg] Pointing Dec	0	-70.15756187474931	[s] Primary exposure time	0.000000	3.3
[deg] Pointing Roll	0.0	185.2560344145006			
[mm] SIM focus pos	-0.684267	-0.6828225247311905			
[mm] SIM defocus	0	0.8505141146731063			
[mm] SIM translation stage pos	-190.132523	250.466033080201			
[mm] SIM translation stage offset	0	-0.01005468664627074			
[s] Observation start time (MET)	77491014.56	77491013.791612			
Observation start date	2000-06-15T21:16:55	2000-06-15T21:16:53			
[s] Observation end time (MET)	77493306.45999999	77493305.691697			
Observation end date	2000-06-15T21:55:06	2000-06-15T21:55:05			
Read mode	TIMED	TIMED			

## **2.3 Star Slots**

## **2.4 FID Slots**

## A Summary

### A.1 Status

V&V Scientist	Jen Lauer
V&V Date (YYYY-MM-DD)	2012.08.31
V&V Edition	1
V&V Disposition and Status	OK
V&V Charge Time	1.2034390447736

### A.2 Comments