

V&V Reference Report

L2 ASCDS Version : 7.6.10

Observation 628 - L2 Version 001
Chandra X-Ray Center

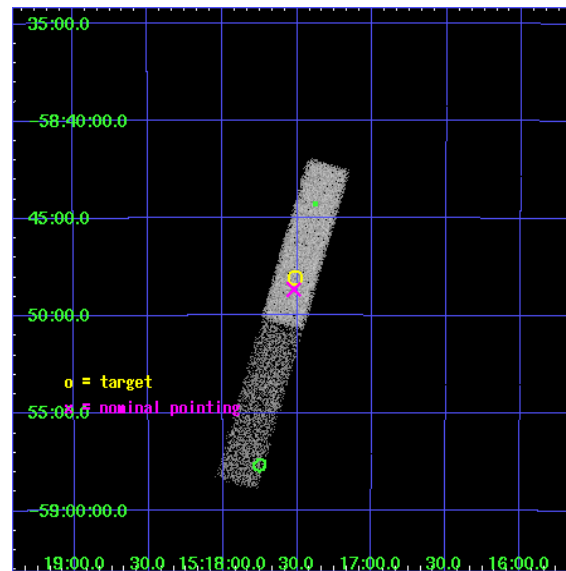
L2 Processing Date : May 30 2007

Contents

1	Front	2
2	OBI	3
2.1	OBI	3
2.1.1	Images	3
2.1.2	Bias	3
2.1.3	Parameters	4
2.1.4	Events	4
2.2	Compared Parameters	5
2.3	Aspect	6
2.4	Star Slots	9
2.4.1	Slot 3	9
2.4.2	Slot 4	10
2.4.3	Slot 5	11
2.4.4	Slot 6	12
2.4.5	Slot 7	13
2.5	FID Slots	14
2.5.1	Slot 0	14
2.5.2	Slot 1	15
2.5.3	Slot 2	16
3	Point Sources	17
A	Summary	18
A.1	Status	18
A.2	Comments	18

1 Front

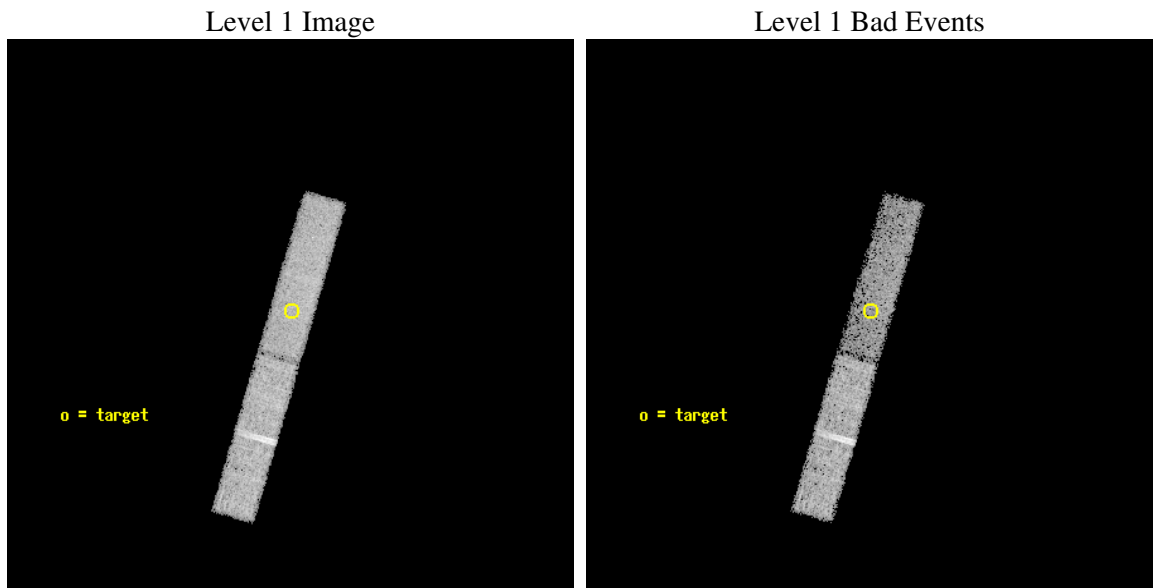
seq_num	200053
obs_id	628
title	A COMPREHENSIVE INVESTIGATION OF X-RAY EMISSION FROM INTERMEDIATE MASS STARS
observer	Dr. Jeffrey Linsky
object	HD 135379
dtcycle	0
cycle	P
ra_targ	229.378542
dec_targ	-58.801194
ra_nom	229.38051931869
dec_nom	-58.81108068885
roll_nom	286.36962778112
revision	3
ontime	19923.300131947
livetime	19054.418641877
ontime6	19923.300131947
ontime7	19923.300131947
l2events	21332



2 OBI

2.1 OBI

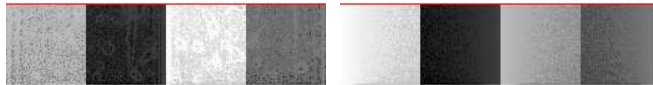
2.1.1 Images



2.1.2 Bias

Chip 6

Chip 7



2.1.3 Parameters

obi_num	0
ascdsver	7.6.10
caldsver	3.4.0
date	2007-05-30T13:23:14
revision	3

sched_exp_time	19785.000000
ontime	19923.300131947
ontime6	19923.300131947
ontime7	19923.300131947
l1events	90401

2.1.4 Events

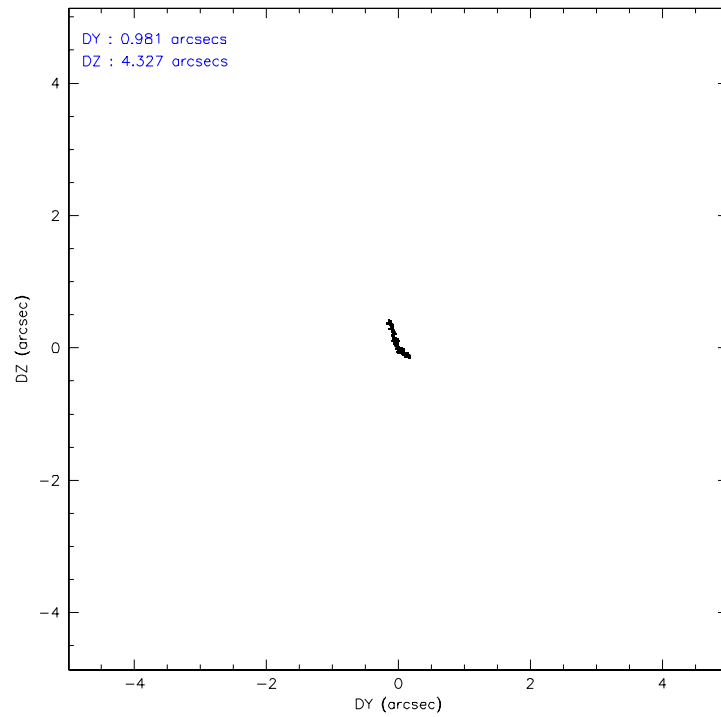
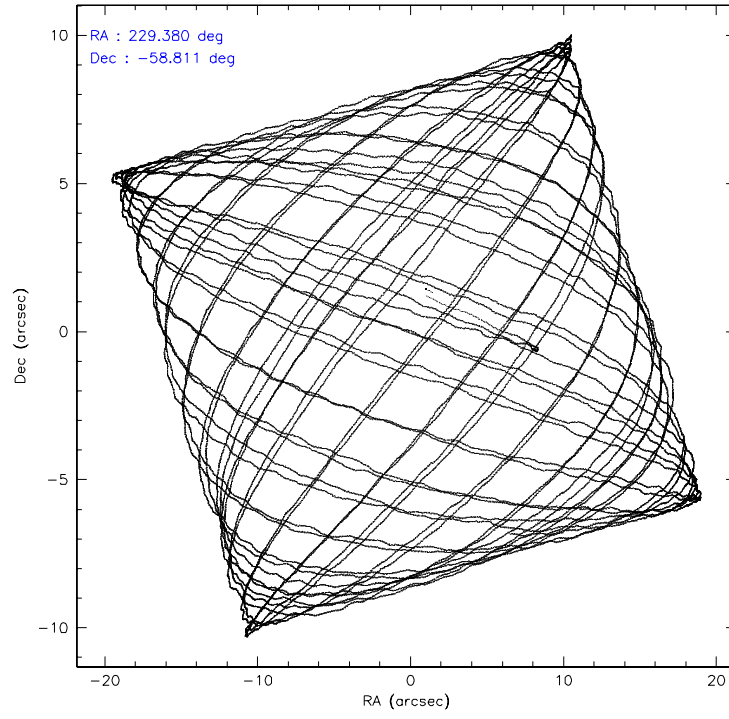
	ccd 6	ccd 7
level 1 events	47767	42634
rejected events	43048	24492
rejected %	90%	57%

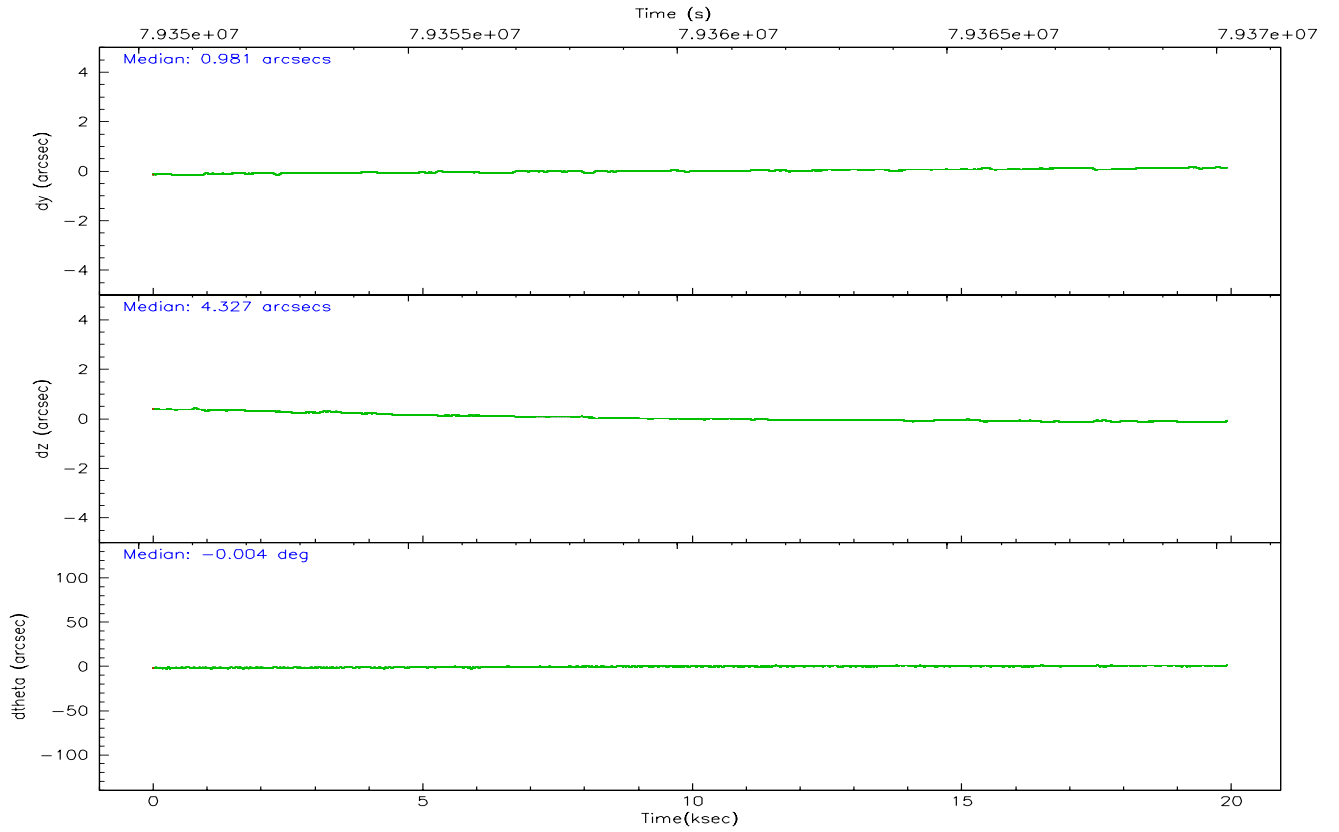
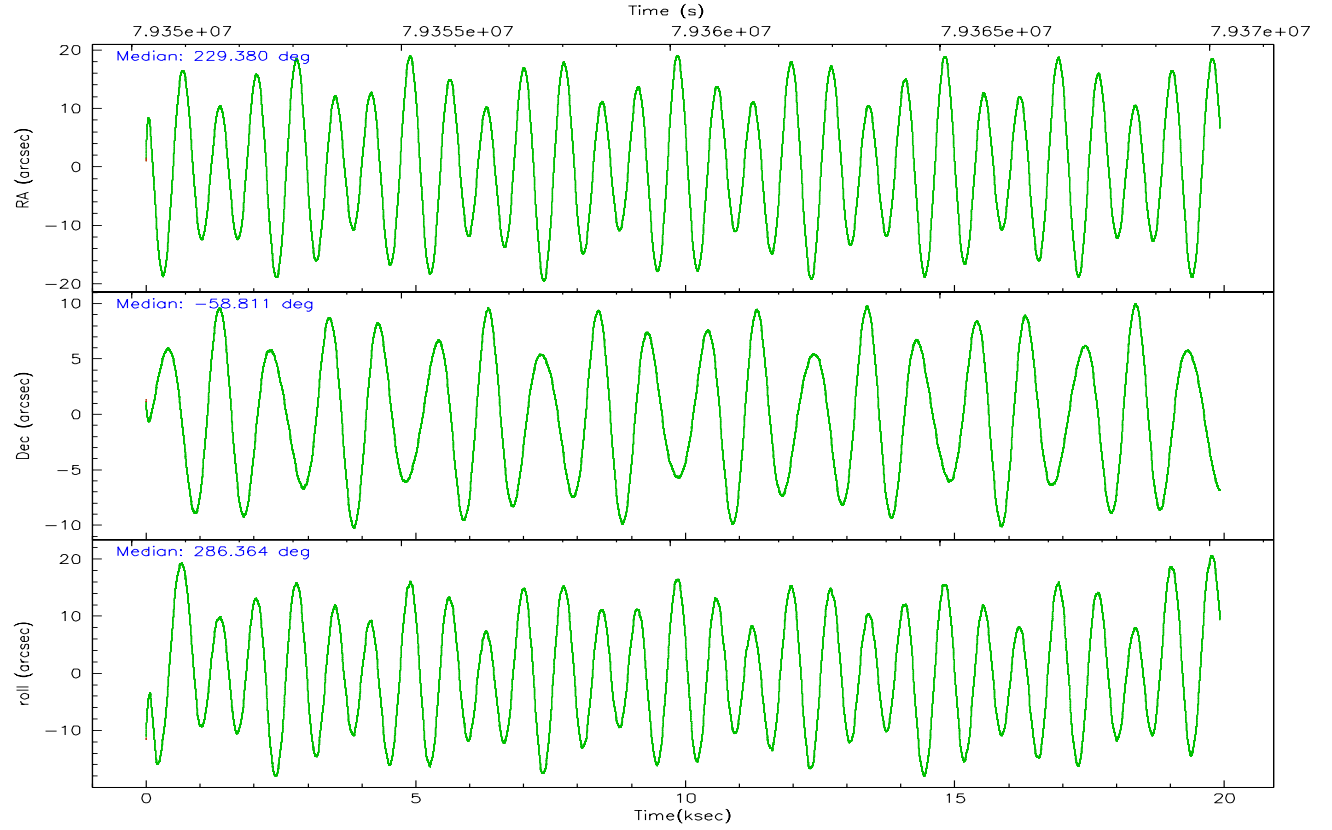
	ccd 6	ccd 7
grade 0 events	1845	1912
	3%	4%
grade 1 events	8	44
	0%	0%
grade 2 events	816	3972
	1%	9%
grade 3 events	777	2188
	1%	5%
grade 4 events	758	2165
	1%	5%
grade 5 events	1333	4120
	2%	9%
grade 6 events	804	8983
	1%	21%
grade 7 events	41426	19250
	86%	45%

2.2 Compared Parameters

Parameter	Planned	Actual	Parameter	Planned	Actual
Instrument	ACIS	ACIS	Obspar format version number	6	6
Detector	ACIS-67	ACIS-67	Obspar file type	PREDICTED	ACTUAL
Grating	NONE	NONE	Obspar update status	NONE	UPDATED
Data mode	VFAINT	VFAINT	Number of optional ACIS chips dropped	0	0
Observation mode	POINTING	POINTING	On-chip summing requested	N	N
Pointing RA	229.342054	229.3805193186851	Subarray requested	CUSTOM	1/4
Pointing Dec	-58.792285	-58.81108068884999	Subarray start row	384	384
Pointing Roll	286.180101	286.3696277811233	Subarray row count	256	256
SIM focus pos (mm)	-0.684267	-0.6828225247311905	Alternating exposures requested	N	N
SIM defocus (mm)	0	0.001444936568705701	Primary exposure time	0.000000	0.9
SIM translation stage pos (mm)	-190.132523	-190.1425803651734			
SIM translation stage offset (mm)	0	0.01005778216563158			
Observation start time	79350409.184000	79349115.92260601			
Observation start date	2000-07-07T09:45:45	2000-07-07T09:25:15			
Observation end time	79370194.184000	79370849.51090699			
Observation end date	2000-07-07T15:15:30	2000-07-07T15:27:29			
Read mode	TIMED	TIMED			

2.3 Aspect



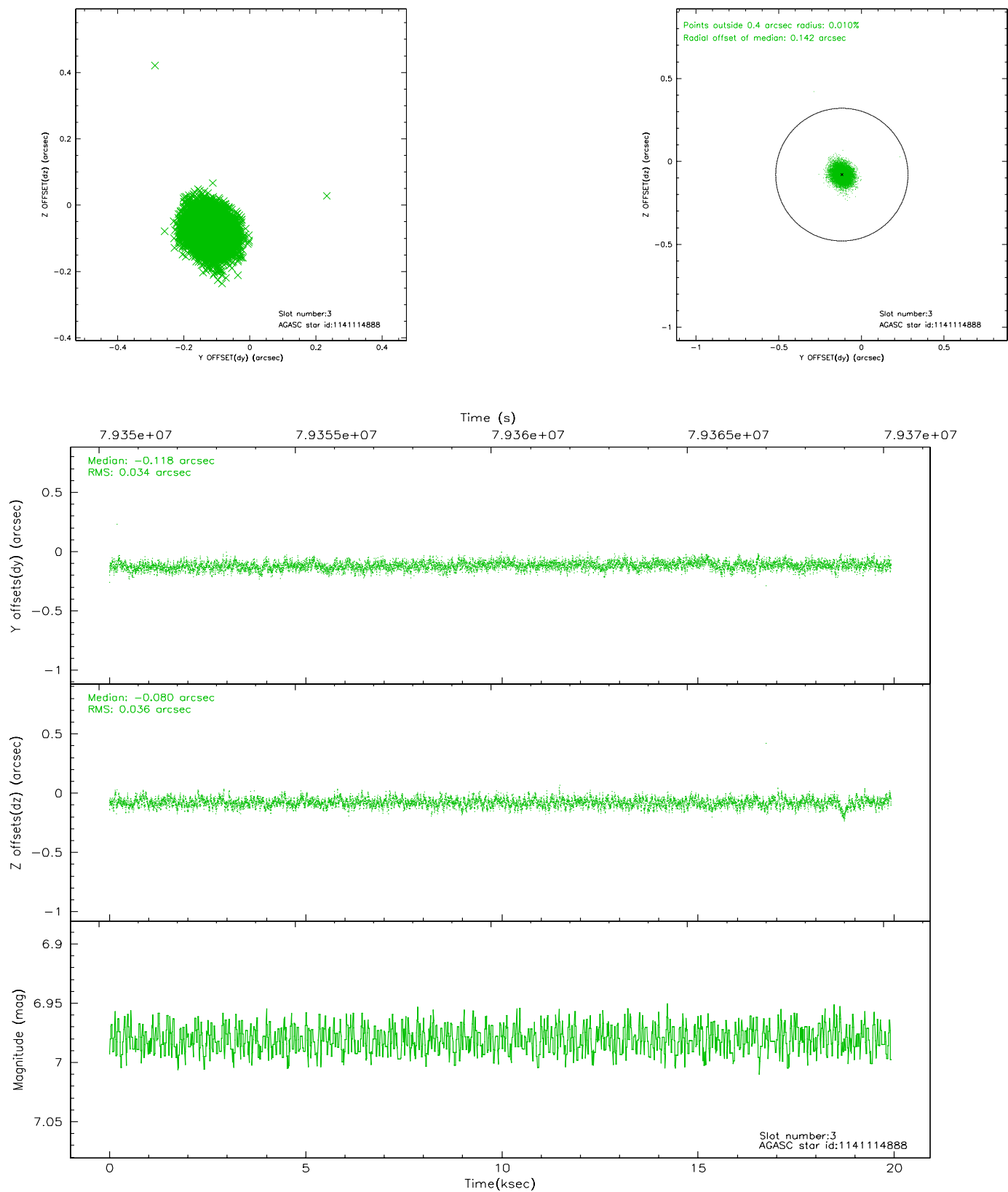


Slot Statistics

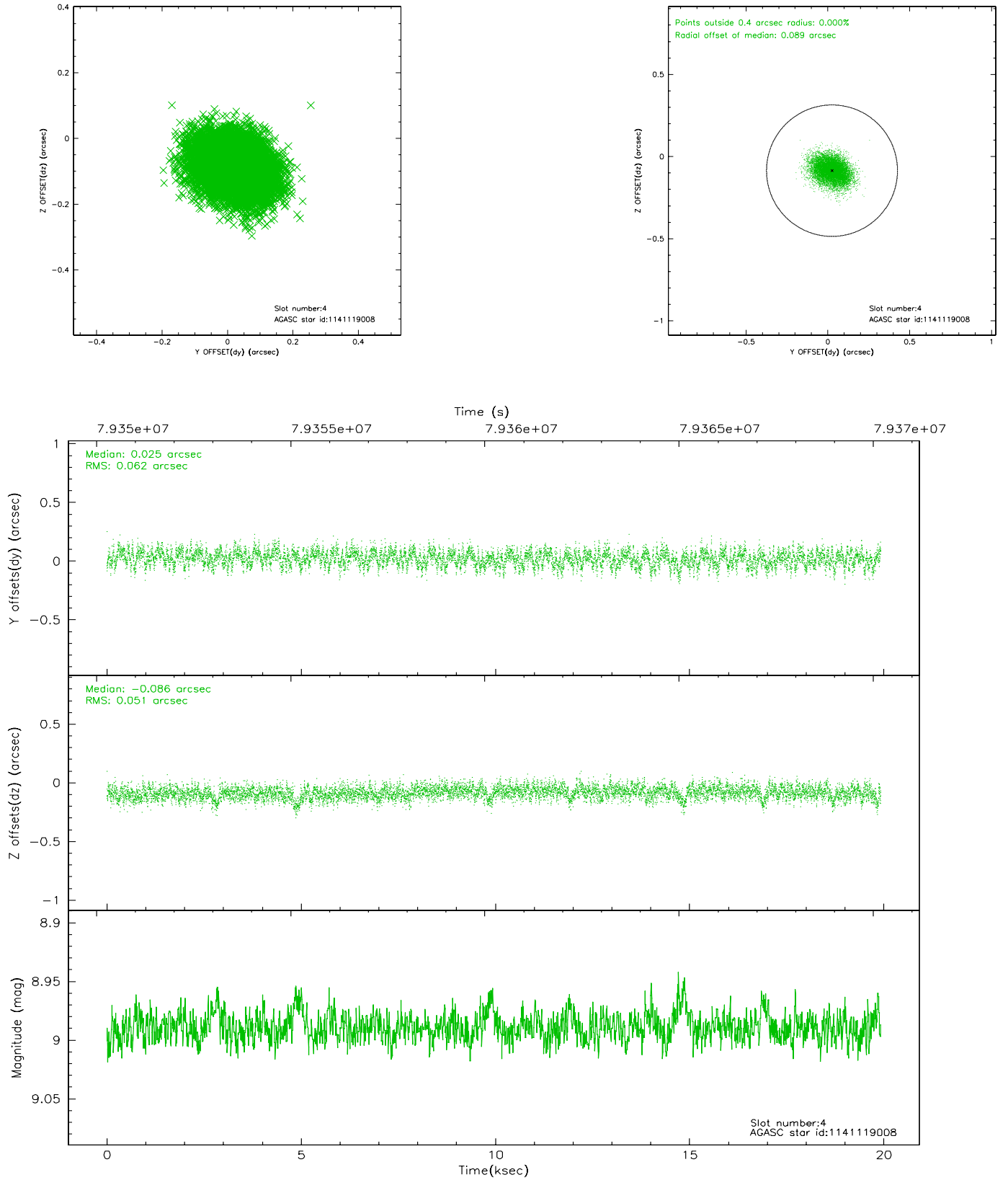
slot	status	id	mag	n_pts	med_dy	med_dz	dr1	dr2	ra	dec	mean_y	mean_z
0	FID	ACIS-S-2	7.11	4859	-0.011	0.012	0.014	0.022	0.000000	0.000000	-753.60	-1725.41
1	FID	ACIS-S-4	7.21	4861	-0.049	0.001	0.029	0.039	0.000000	0.000000	2159.58	182.86
2	FID	ACIS-S-5	7.24	4861	0.025	-0.006	0.013	0.021	0.000000	0.000000	-1806.15	176.76
3	GUIDE	1141114888	6.98	9721	-0.118	-0.080	0.052	0.084	229.339260	-58.368001	-1468.20	421.35
4	GUIDE	1141119008	8.99	9716	0.025	-0.086	0.087	0.139	228.552751	-59.263048	1231.59	-1868.32
5	GUIDE	1141113304	8.85	9720	0.044	0.081	0.082	0.137	229.893168	-58.194542	-1770.80	1603.45
6	GUIDE	1141116760	9.44	9720	-0.001	0.026	0.084	0.141	229.350077	-58.445284	-1195.38	363.70
7	GUIDE	1141116384	9.43	9711	0.047	0.058	0.096	0.165	229.578291	-59.437206	2351.29	-230.55

2.4 Star Slots

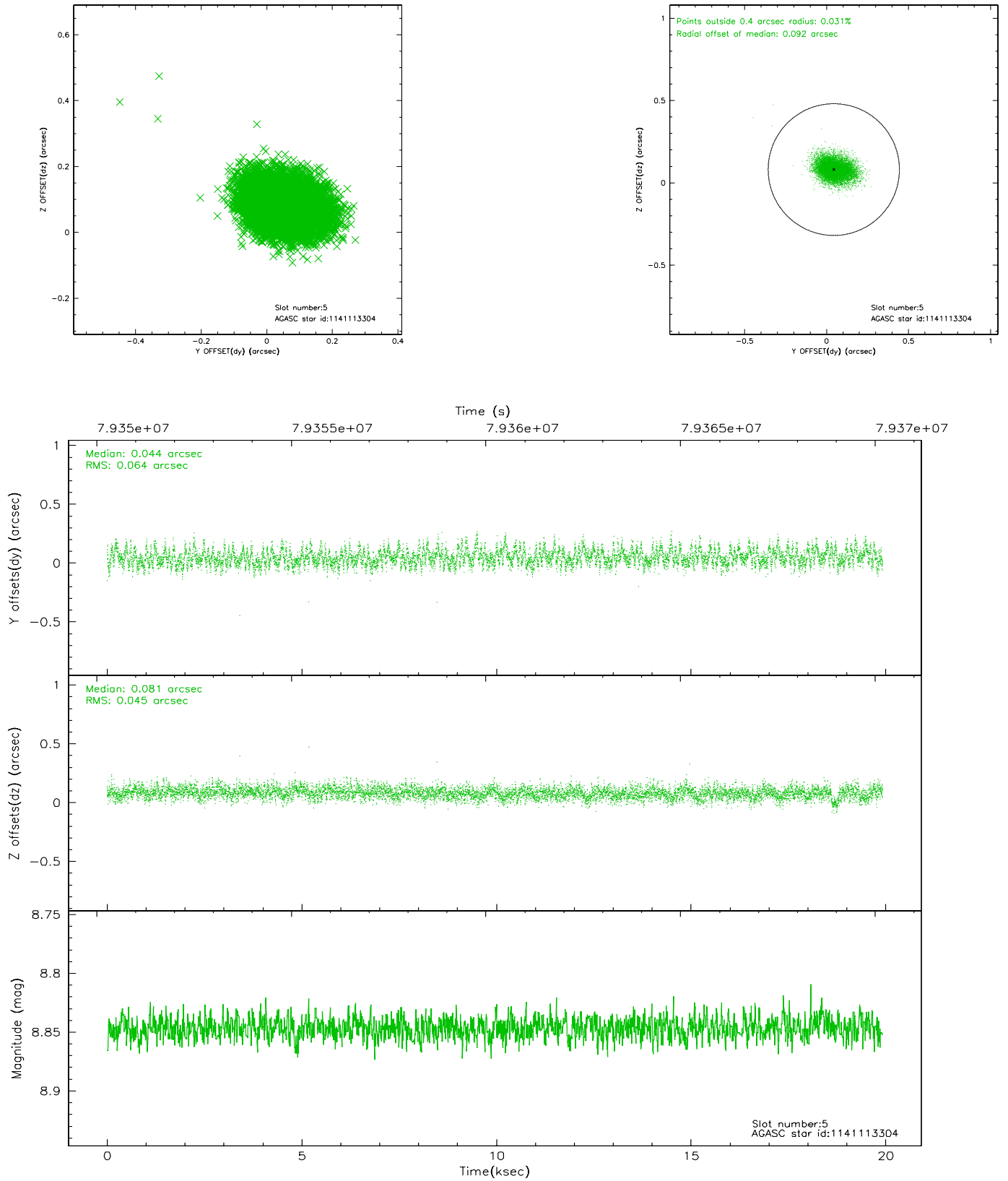
2.4.1 Slot 3



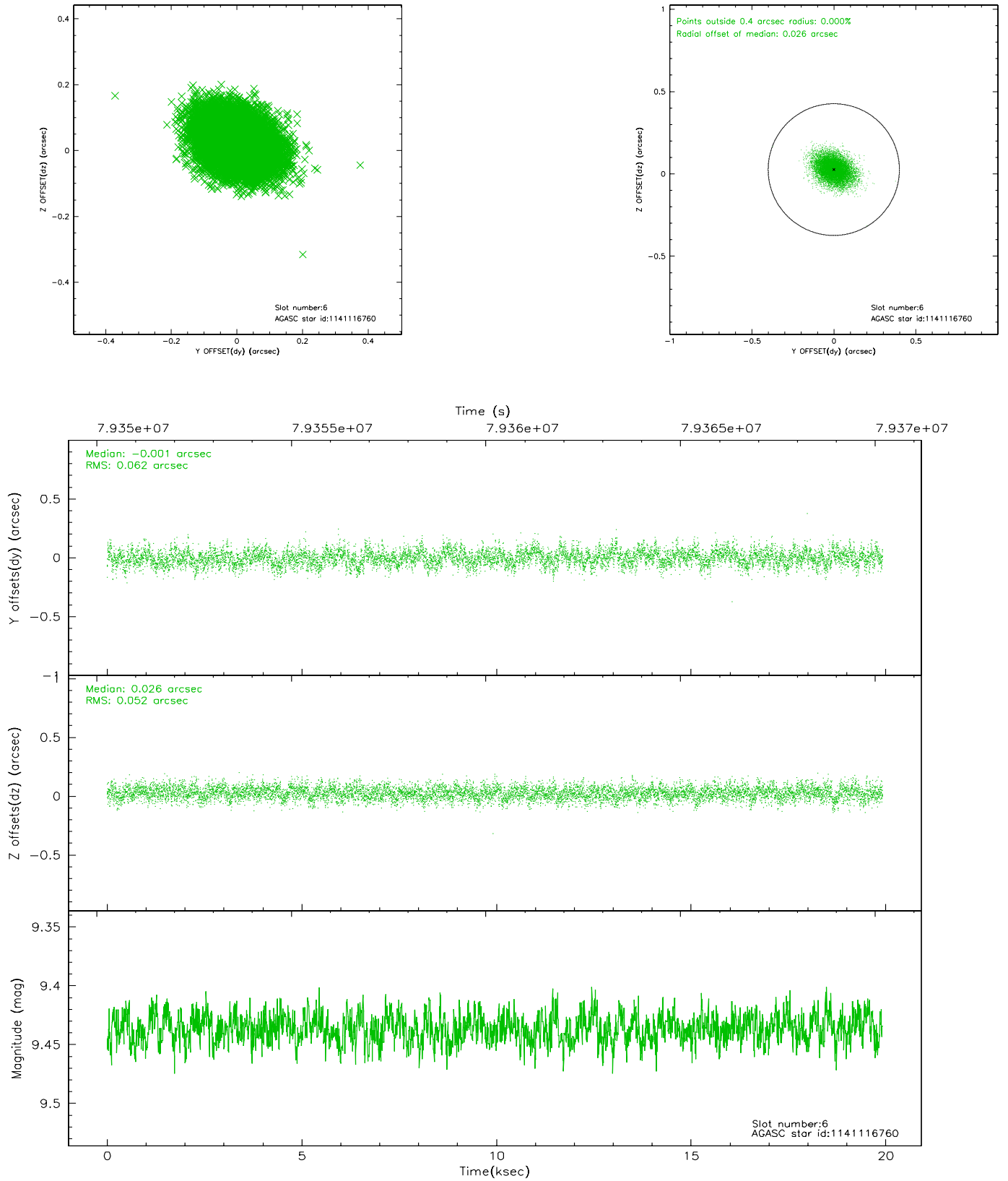
2.4.2 Slot 4



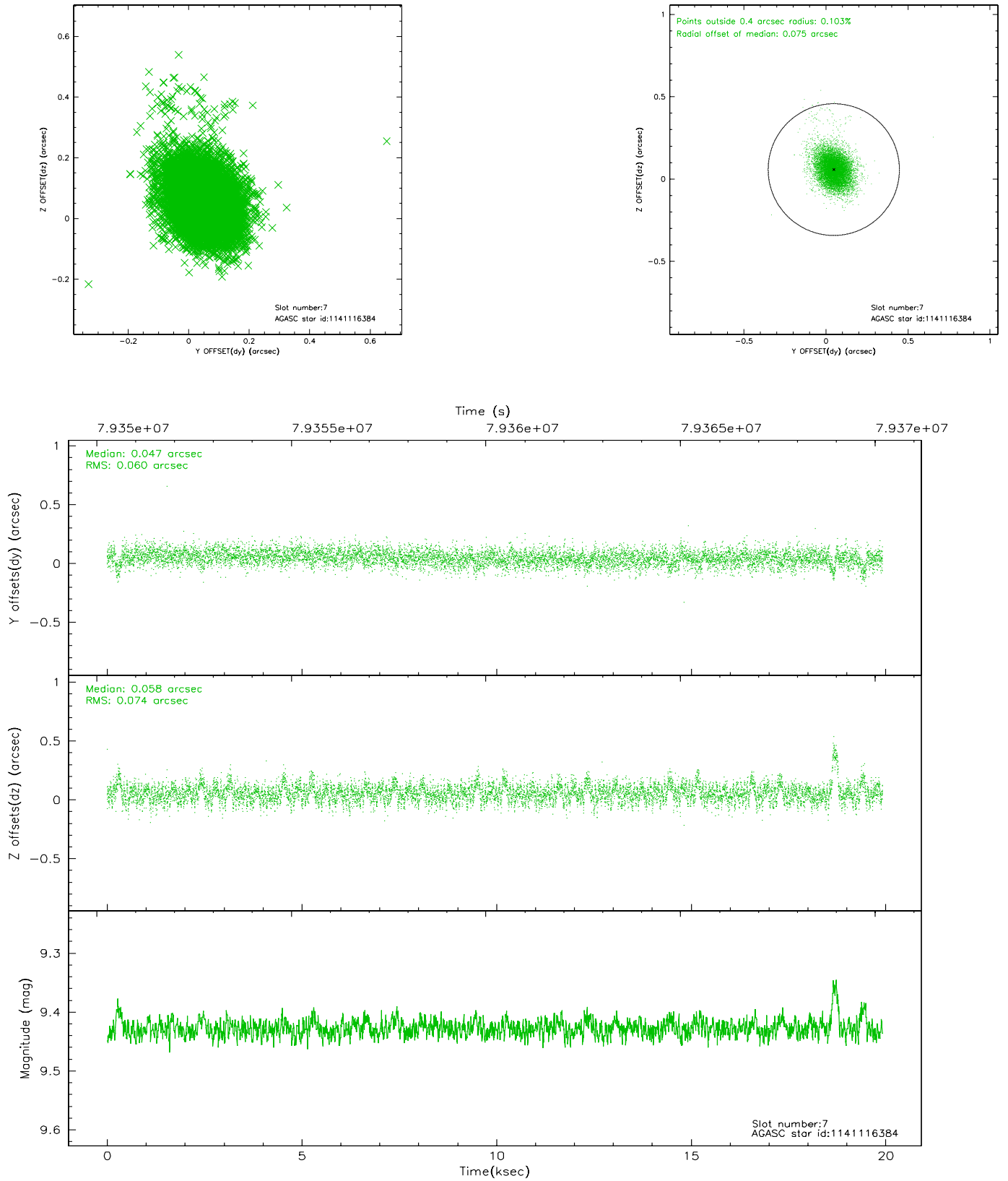
2.4.3 Slot 5



2.4.4 Slot 6

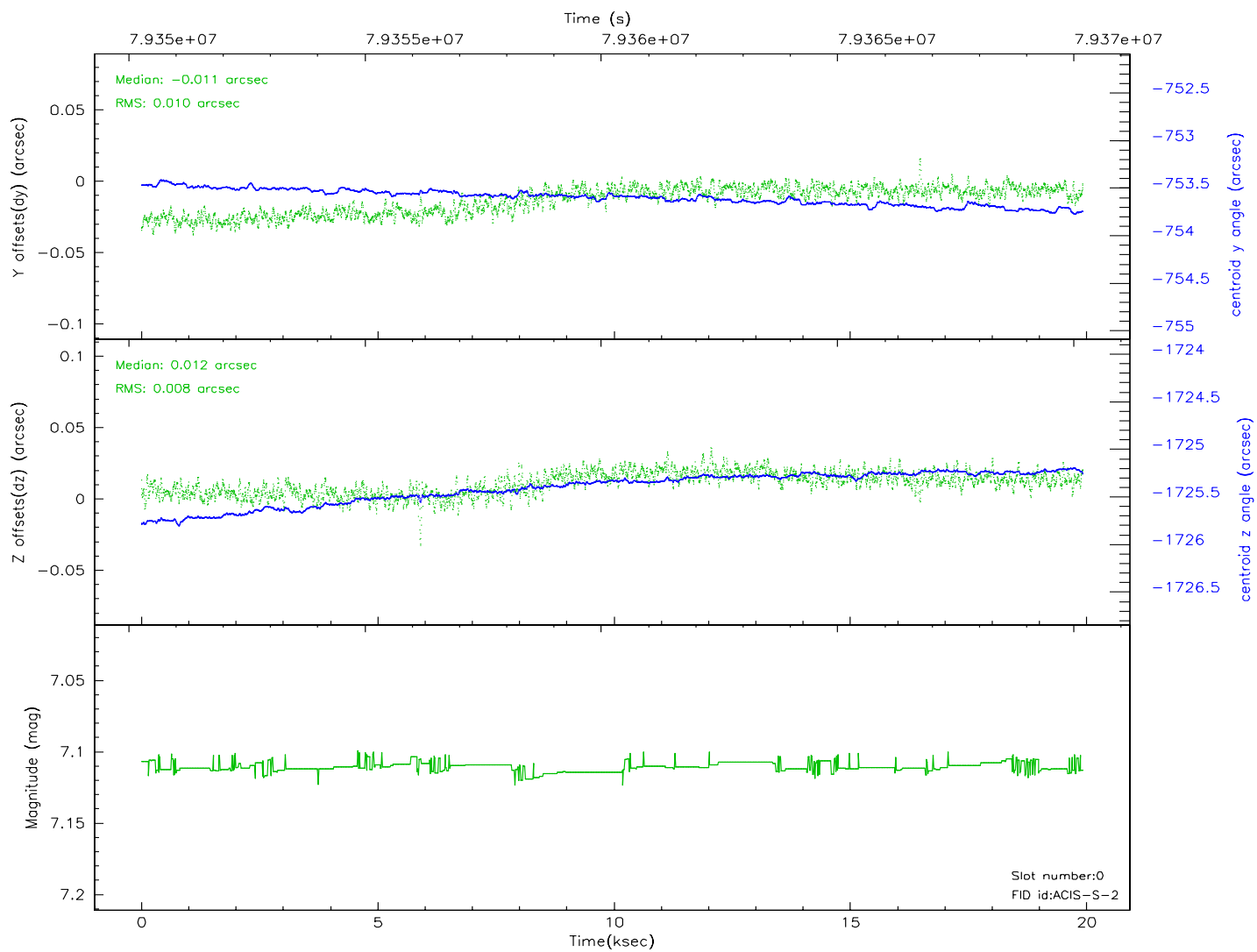
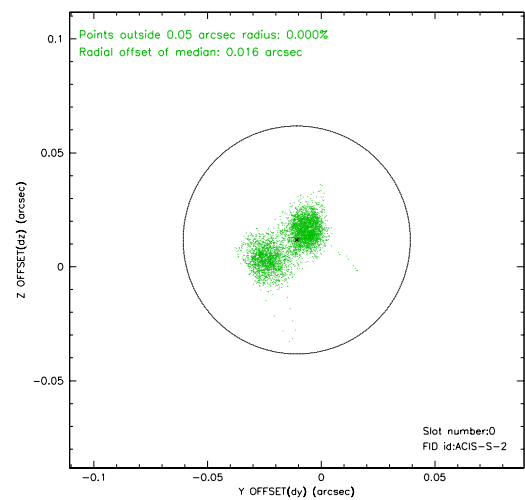
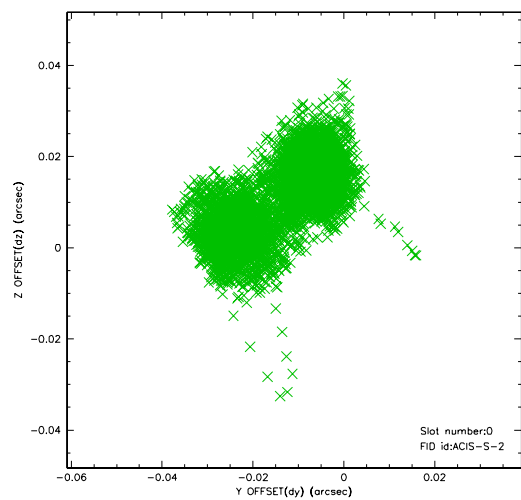


2.4.5 Slot 7

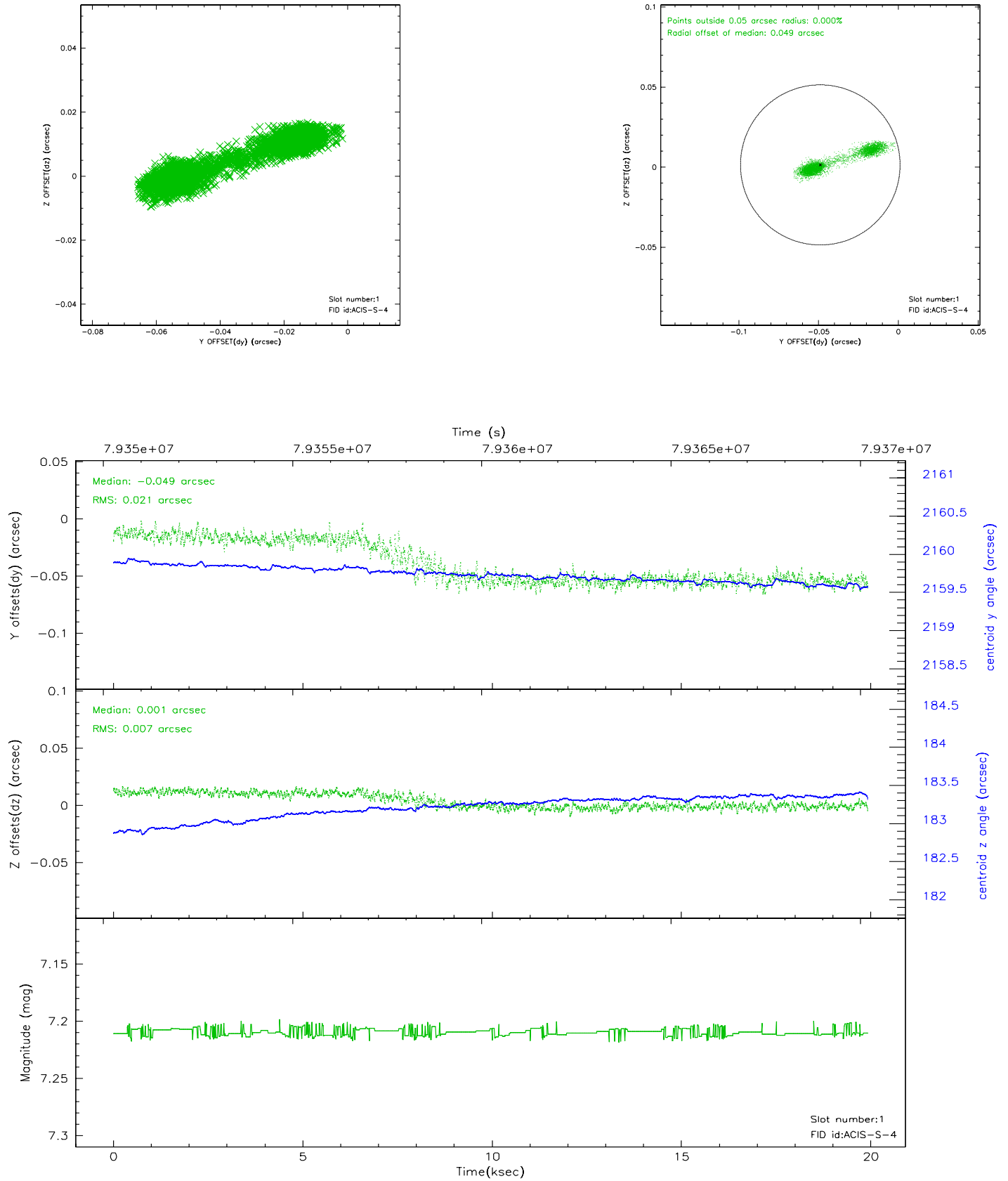


2.5 FID Slots

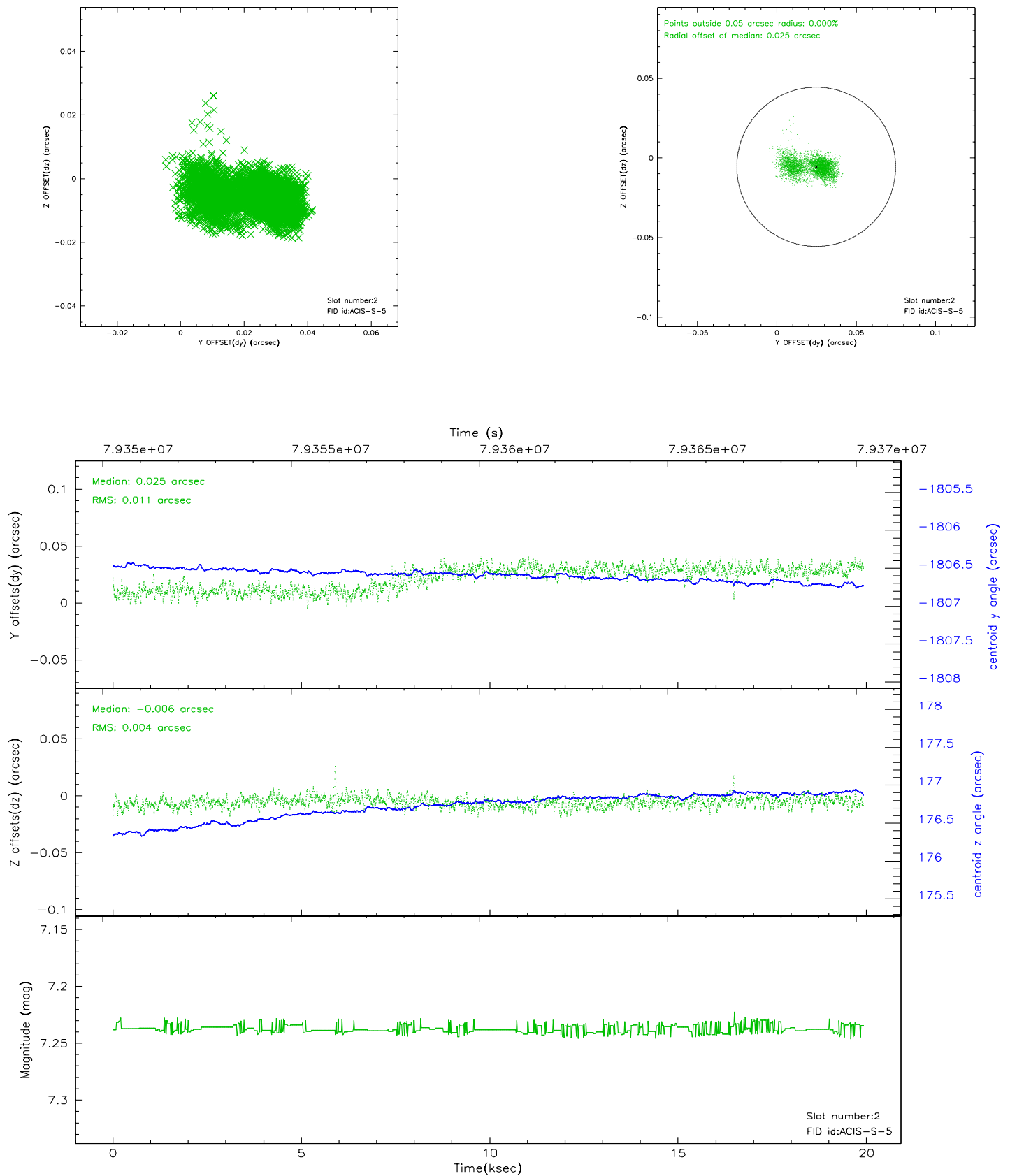
2.5.1 Slot 0



2.5.2 Slot 1



2.5.3 Slot 2



3 Point Sources

4.53 arcmin



A Summary

A.1 Status

V&V Scientist	Beth Sundheim
V&V Date (YYYY-MM-DD)	2007.05.30
V&V Edition	1
V&V Disposition and Status	OK
V&V Charge Time	19.925

A.2 Comments