

# V&V Reference Report

## L2 ASCDS Version : 8.3.2.1

Observation 62508 - L2 Version 3

Chandra X-Ray Center

L2 Processing Date : Sep 28 2010

## Contents

<b>1</b>	<b>Front</b>	<b>2</b>
<b>2</b>	<b>OBI</b>	<b>3</b>
2.1	OBI . . . . .	3
2.1.1	Images . . . . .	3
2.1.2	Bias . . . . .	3
2.1.3	Parameters . . . . .	4
2.1.4	Events . . . . .	4
2.2	Compared Parameters . . . . .	5
2.3	Star Slots . . . . .	6
2.4	FID Slots . . . . .	6
<b>A</b>	<b>Summary</b>	<b>7</b>
A.1	Status . . . . .	7
A.2	Comments . . . . .	7

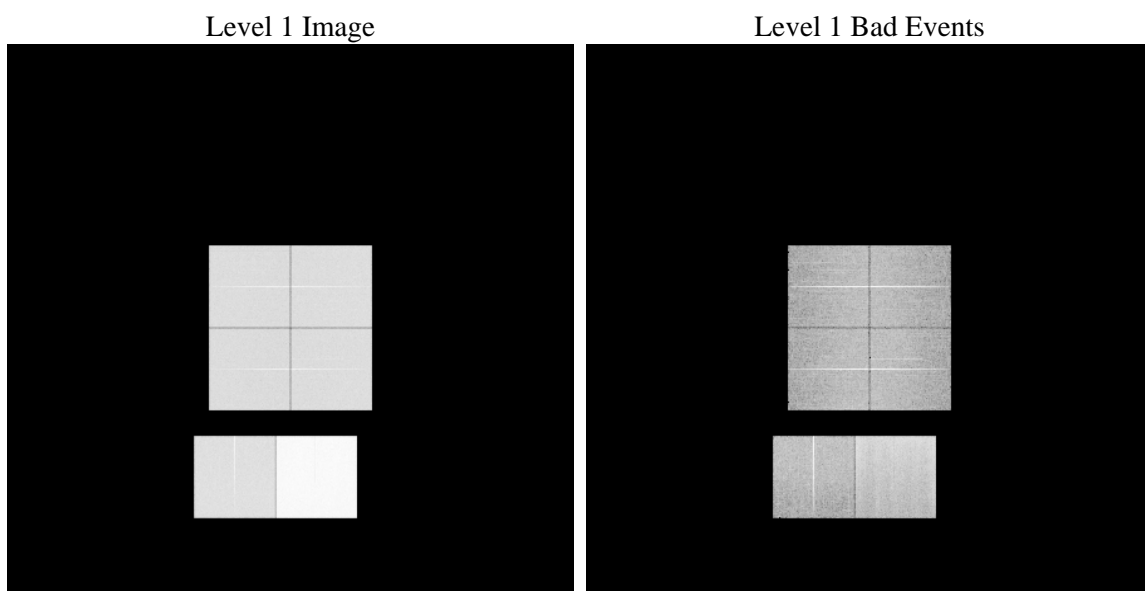
# 1 Front

seq_num	&#160	Sequence number
obs_id	62508	Observation id
title	ACIS-012367 diagnostics	Proposal title
observer	CHANDRA engineering request/realtime commanding	Principal investig
object	&#160	Source name
dtcycle	0	&#160
cycle	P	events from which exps? Prim/Second/Both
ra_targ	0.0	Observer's specified target RA
dec_targ	0.0	Observer's specified target Dec
ra_nom	175.20841061121	Nominal RA
dec_nom	66.120024288742	Nominal Dec
roll_nom	12.258032914911	Nominal Roll
revision	3	Processing version of data
ontime	15487.664580896	Sum of GTIs [s]
livetime	15291.550446421	Livetime [s]
ontime0	5758.1375680342	Sum of GTIs [s]
ontime1	5923.7514111847	Sum of GTIs [s]
ontime2	5583.1214874759	Sum of GTIs [s]
ontime3	5781.2277807668	Sum of GTIs [s]
ontime6	6325.7635418251	Sum of GTIs [s]
ontime7	15487.664580896	Sum of GTIs [s]
l2events	4160319	Number of level 2 events

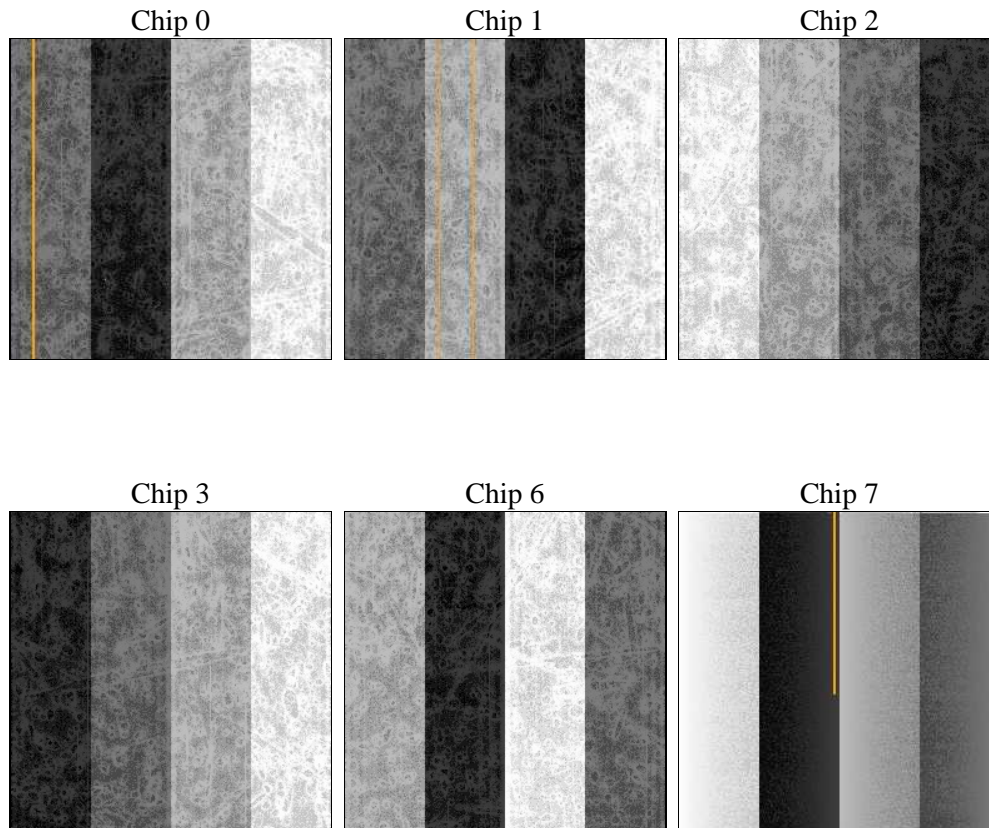
## 2 OBI

### 2.1 OBI

#### 2.1.1 Images



#### 2.1.2 Bias



### 2.1.3 Parameters

obi_num	0	Obi number		
ascdsver	8.3.2.1	ASCDS version number	sched_exp_time	0.0
caldsver	4.3.1	&#160		Scheduled observation exposure time
date	2010-09-28T21:25:43	Date and time of file creation	ontime	15487.664580896
revision	3	Processing version of data	ontime0	5758.1375680342
			ontime1	5923.7514111847
			ontime2	5583.1214874759
			ontime3	5781.2277807668
			ontime6	6325.7635418251
			ontime7	15487.664580896
			l1events	4823131
				Sum of GTIs [s]
				Sum of GTIs [s]
				Sum of GTIs [s]
				Sum of GTIs [s]
				Sum of GTIs [s]
				Sum of GTIs [s]
				Sum of GTIs [s]
				Number of level 1 events

### 2.1.4 Events

	ccd 0	ccd 1	ccd 2	ccd 3	ccd 6	ccd 7		ccd 0	ccd 1	ccd 2	ccd 3	ccd 6	ccd 7
level 1 events	608356	626187	595685	617191	690279	1685433	grade 0 events	198806	206717	166138	180287	167077	274878
rejected events	86385	85093	89738	90103	101819	166577		32%	33%	27%	29%	24%	16%
rejected %	14%	13%	15%	14%	14%	9%	grade 1 events	931	886	729	853	653	677
								0%	0%	0%	0%	0%	0%
							grade 2 events	189375	196619	214882	217306	270832	426242
								31%	31%	36%	35%	39%	25%
							grade 3 events	21613	22247	17158	18807	17378	130536
								3%	3%	2%	3%	2%	7%
							grade 4 events	21329	22333	17370	19088	17172	118770
								3%	3%	2%	3%	2%	7%
							grade 5 events	5339	5353	5140	5235	5697	24234
								0%	0%	0%	0%	0%	1%
							grade 6 events	90848	93178	90399	91600	116001	568723
								14%	14%	15%	14%	16%	33%
							grade 7 events	80115	78854	83869	84015	95469	141373
								13%	12%	14%	13%	13%	8%

## 2.2 Compared Parameters

Parameter	Planned	Actual	Parameter	Planned	Actual
Instrument	ACIS	ACIS	Obspar format version number	6	6
Detector	ACIS-012367	ACIS-012367	Obspar file type	PREDICTED	ACTUAL
Grating	NONE	NONE	Obspar update status	NONE	UPDATED
Data mode	FAINT	FAINT	On-chip summing requested	N	N
Observation mode	SECONDARY	SECONDARY	Subarray requested	NONE	NONE
Pointing RA	0	175.2084106112121	Alternating exposures requested	N	N
Pointing Dec	0	66.12002428874185	Primary exposure time	3.2	3.2
Pointing Roll	0.0	12.25803291491077			
SIM focus pos (mm)	-0.782348	-0.7809083437167272			
SIM defocus (mm)	0	0.7524282956875696			
SIM translation stage pos (mm)	-233.592463	250.4434042424869			
SIM translation stage offset (mm)	0	0.01257415106775284			
Observation start time	55234405.595739	55234404.827278			
Observation start date	1999-10-02T06:53:26	1999-10-02T06:53:24			
Observation end time	55262437.296752	55262436.528287			
Observation end date	1999-10-02T14:40:37	1999-10-02T14:40:36			
Read mode	TIMED	TIMED			

## 2.3 Star Slots

## 2.4 FID Slots

# A Summary

## A.1 Status

V&V Scientist	Joy Nichols
V&V Date (YYYY-MM-DD)	2010.10.01
V&V Edition	1
V&V Disposition and Status	OK
V&V Charge Time	15.487664580896

## A.2 Comments

Severe telemetry saturation.

===

The focal plane temperature is approximately -110 C during this observation. This reprocessing of the data applies no CTI correction because none is available for this temperature at present.

The ACIS CTI correction has not been calibrated at this temperature, because it was early in the mission, and ACIS had not yet been lowered to the standard -119.7 C. Both front and back illuminated chips are affected. However a T\_GAIN correction has been applied to the BI chips (ACIS-5 and ACIS-7) data included here.

The ACIS spectral response calibration is less accurate at these warmer temperatures than it is at -119.7 C. Users whose science objectives depend on the most accurate spectral response (ie: fitting line-rich spectra) may notice an effect. Users whose science objectives do not depend on the most accurate spectral response should not notice an effect.

=====