

V&V Reference Report

L2 ASCDS Version : 7.6.7

Observation 6228 - L2 Version 002
Chandra X-Ray Center

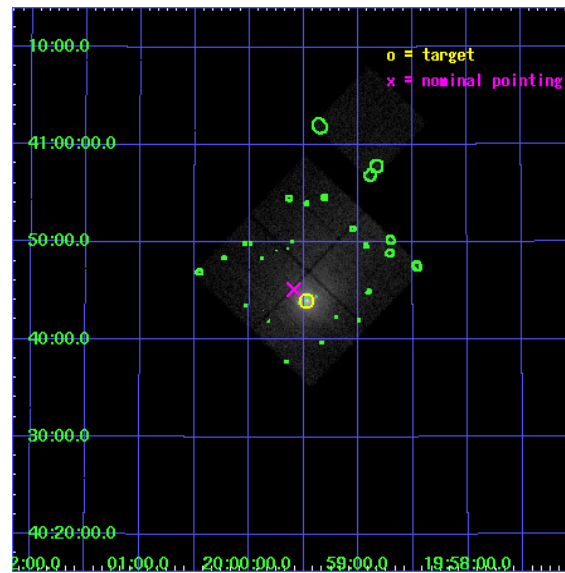
L2 Processing Date: Feb 25 2006

Contents

1	Front	2
2	OBI	3
2.1	OBI	3
2.1.1	Images	3
2.1.2	Bias	3
2.1.3	Parameters	4
2.1.4	Events	4
2.2	Compared Parameters	5
2.3	Aspect	6
2.4	Star Slots	9
2.4.1	Slot 3	9
2.4.2	Slot 4	10
2.4.3	Slot 5	11
2.4.4	Slot 6	12
2.4.5	Slot 7	13
2.5	FID Slots	14
2.5.1	Slot 0	14
2.5.2	Slot 1	15
2.5.3	Slot 2	16
3	Point Sources	17
A	Summary	18
A.1	Status	18
A.2	Comments	18

1 Front

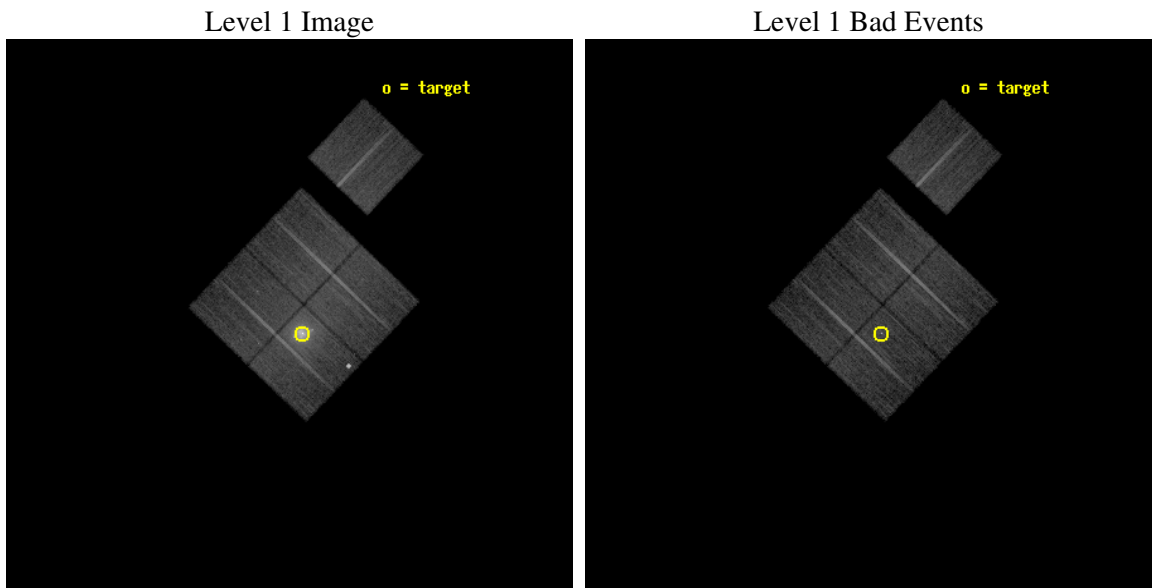
seq_num	800540
obs_id	6228
title	Cygnus A --- Shock Heating of the Intra-Cluster Medium
observer	Dr Andrew Young
object	Cygnus A
dtcycle	0
cycle	P
ra_targ	299.867917
dec_targ	40.733889
ra_nom	299.89756601585
dec_nom	40.752693819484
roll_nom	43.689331646255
revision	2
ontime	16250.199968755
livetime	16037.87914294
ontime0	16250.199968755
ontime1	16250.199968755
ontime2	16250.199968755
ontime3	16250.199968755
ontime6	16250.199968755
l2events	149482



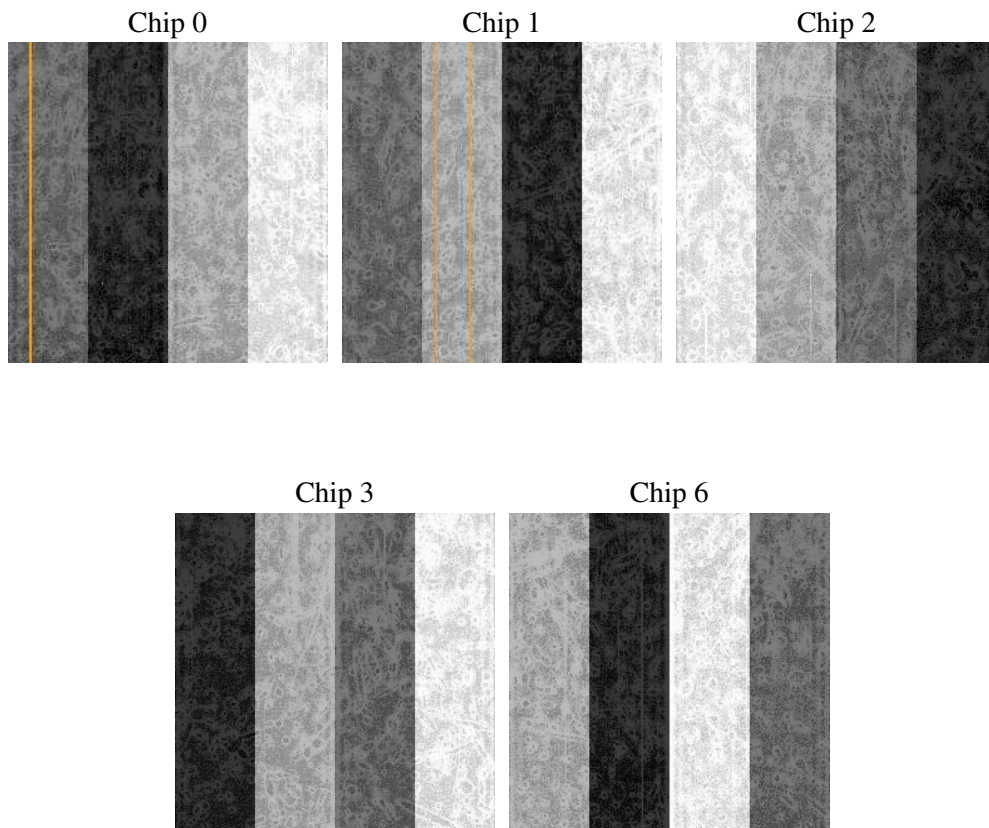
2 OBI

2.1 OBI

2.1.1 Images



2.1.2 Bias



2.1.3 Parameters

obi_num	0
ascdsver	7.6.7
caldbver	3.2.1
date	2006-02-25T08:30:53
revision	2

sched_exp_time	16198.982000
ontime	16254.683656245
ontime0	16254.683656245
ontime1	16254.683656245
ontime2	16254.683636308
ontime3	16254.683656245
ontime6	16254.683656245
l1events	618188

2.1.4 Events

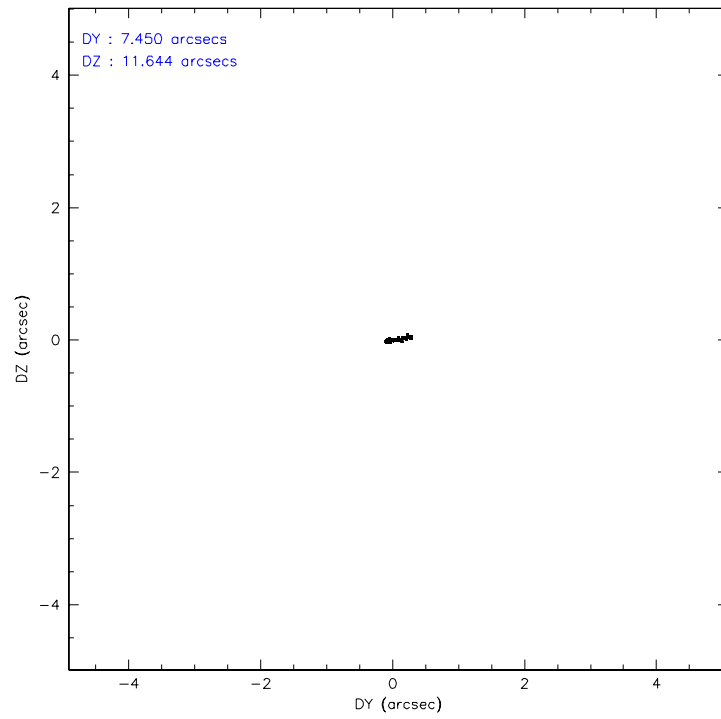
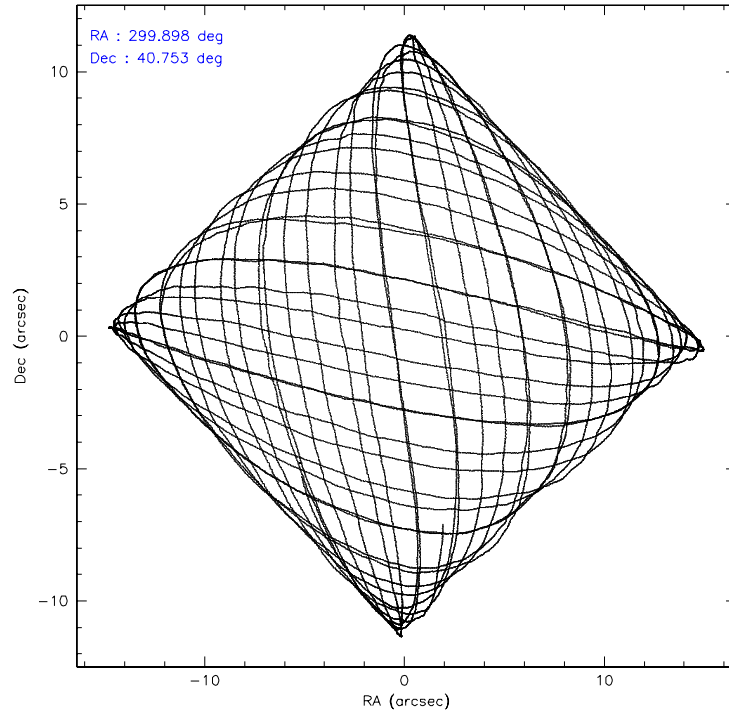
	ccd 0	ccd 1	ccd 2	ccd 3	ccd 6
level 1 events	102103	176635	114221	118885	106344
rejected events	82015	86965	93461	92591	94066
rejected %	80%	49%	81%	77%	88%

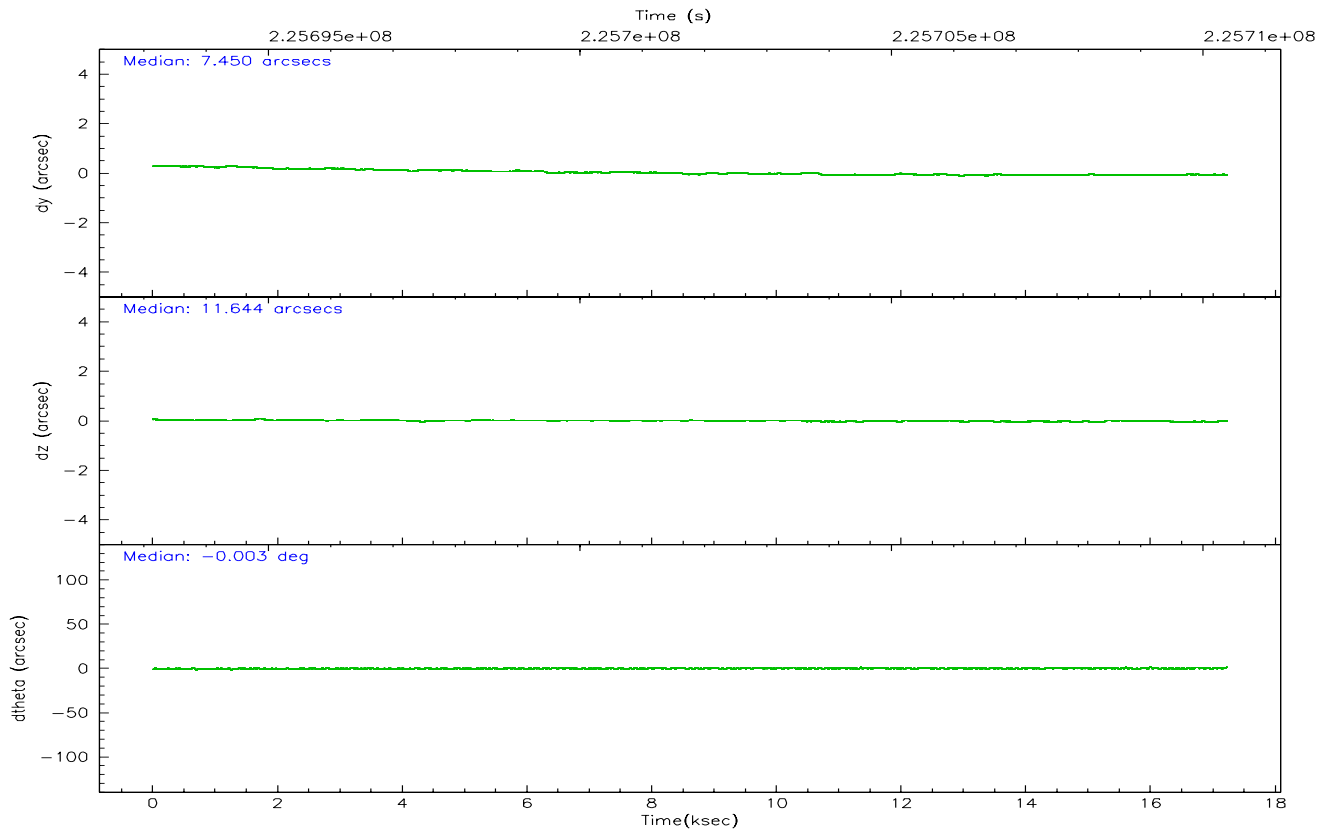
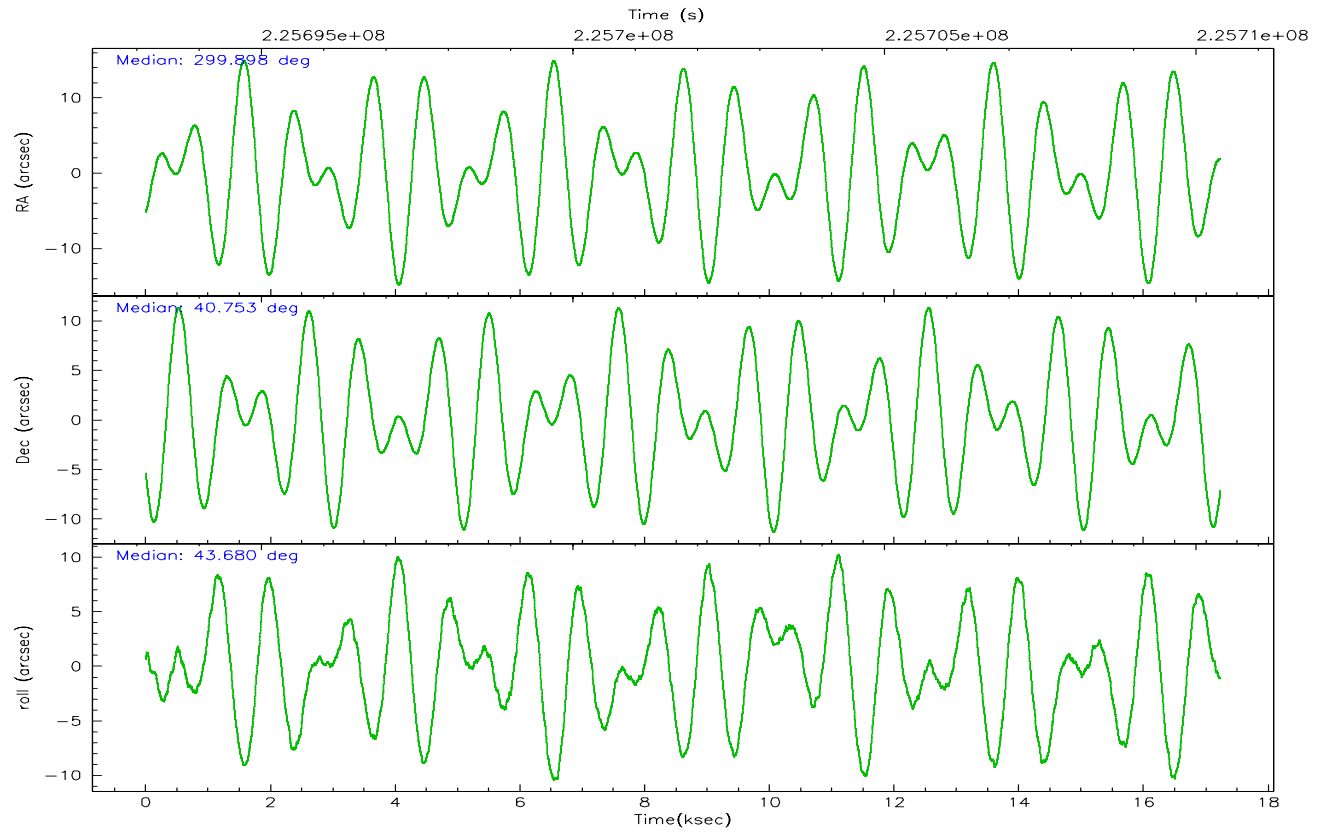
	ccd 0	ccd 1	ccd 2	ccd 3	ccd 6
grade 0 events	11439	61273	12367	16724	5102
	11%	34%	10%	14%	4%
grade 1 events	98	533	109	121	43
	0%	0%	0%	0%	0%
grade 2 events	3438	10776	3446	3817	2392
	3%	6%	3%	3%	2%
grade 3 events	1501	8753	1398	1676	1238
	1%	4%	1%	1%	1%
grade 4 events	1459	3743	1431	1649	1205
	1%	2%	1%	1%	1%
grade 5 events	3719	4452	3523	4087	4022
	3%	2%	3%	3%	3%
grade 6 events	2256	5167	2129	2438	2346
	2%	2%	1%	2%	2%
grade 7 events	78193	81938	89818	88373	89996
	76%	46%	78%	74%	84%

2.2 Compared Parameters

Parameter	Planned	Actual	Parameter	Planned	Actual
Instrument	ACIS	ACIS	Obspar format version number	6	6
Detector	ACIS-01236	ACIS-01236	Obspar file type	PREDICTED	ACTUAL
Grating	NONE	NONE	Obspar update status	NONE	UPDATED
Data mode	VFAINT	VFAINT	On-chip summing requested	N	N
Observation mode	POINTING	POINTING	Subarray requested	NONE	NONE
Pointing RA	299.887572	299.8975660158491	Alternating exposures requested	N	N
Pointing Dec	40.726424	40.75269381948419	Primary exposure time	0.000000	3.1
Pointing Roll	43.487167	43.68933164625525			
SIM focus pos (mm)	-0.782348	-0.7809083437167272			
SIM defocus (mm)	0	0.001439871863259334			
SIM translation stage pos (mm)	-242.392463	-242.3975952774949			
SIM translation stage offset (mm)	8.800000000000001	8.805142274565242			
Observation start time	225694185.184000	225692834.32739			
Observation start date	2005-02-25T04:48:41	2005-02-25T04:27:14			
Observation end time	225710384.184000	225710625.25319			
Observation end date	2005-02-25T09:18:40	2005-02-25T09:23:45			
Read mode	TIMED	TIMED			

2.3 Aspect



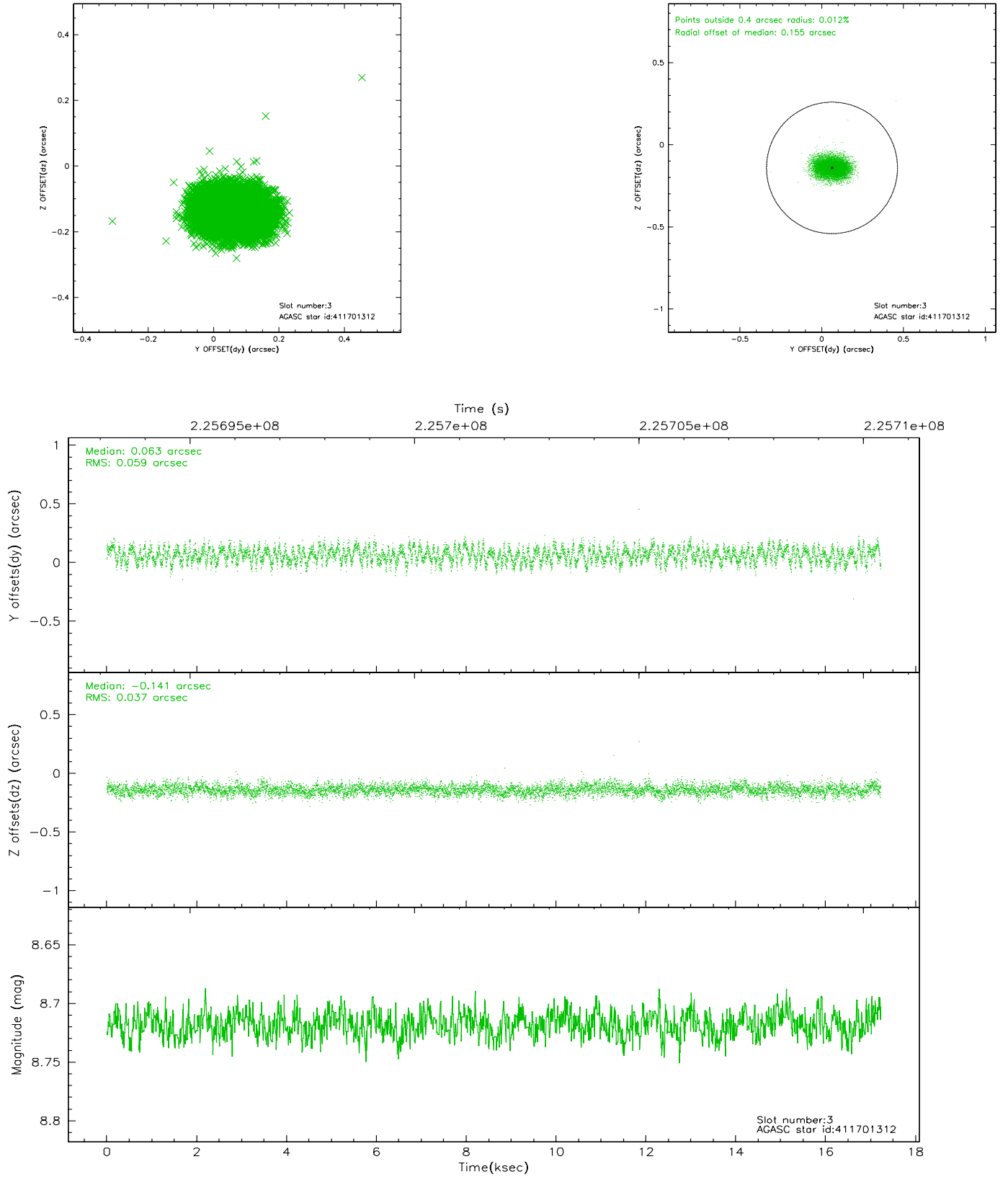


Slot Statistics

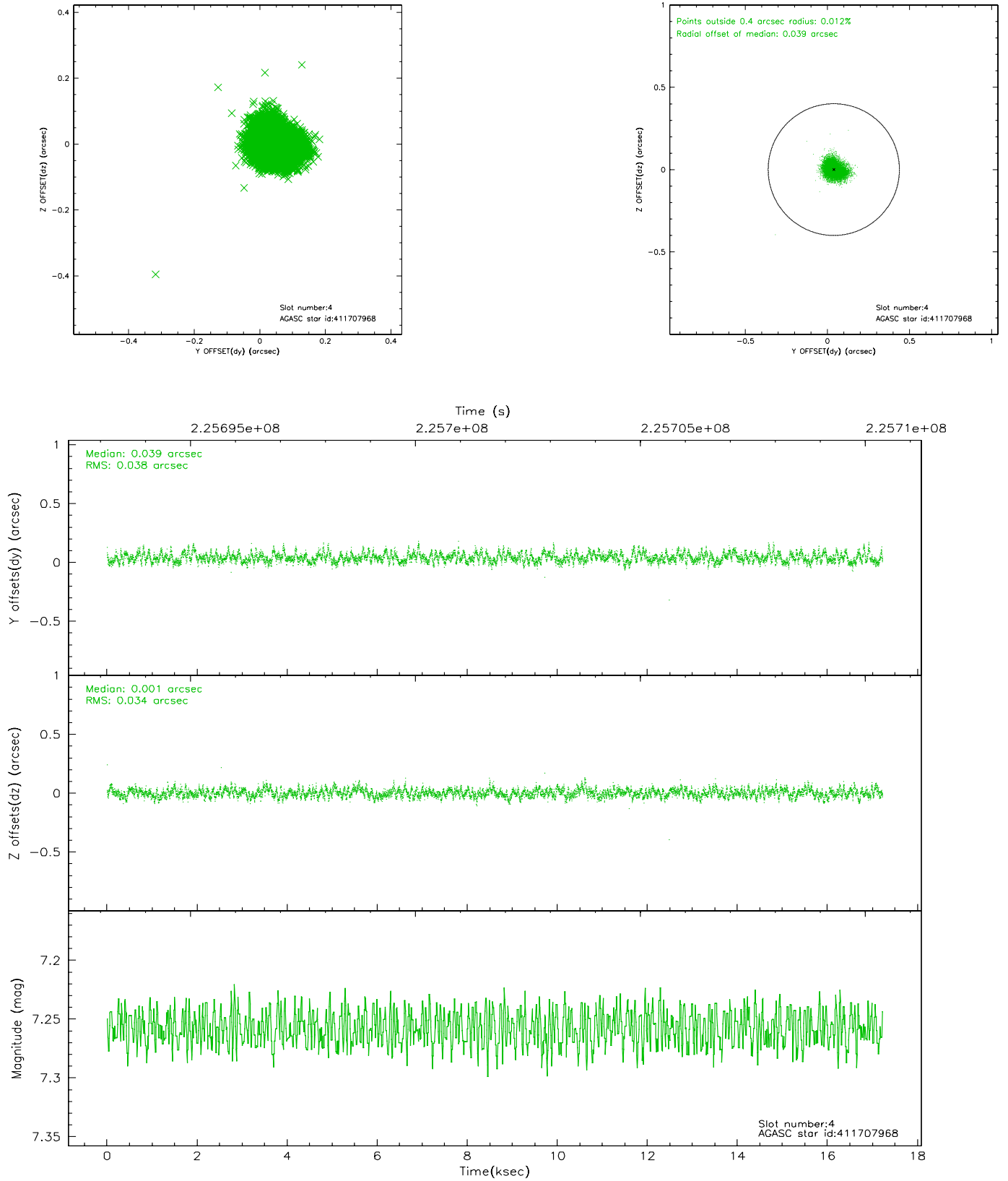
slot	status	id	mag	n_pts	med_dy	med_dz	dr1	dr2	ra	dec	mean_y	mean_z
0	FID	ACIS-I-1	7.28	4202	-0.067	0.137	0.007	0.013	0.000000	0.000000	932.28	-654.03
1	FID	ACIS-I-5	7.24	4202	-0.067	-0.001	0.006	0.011	0.000000	0.000000	-1815.71	1243.20
2	FID	ACIS-I-6	7.24	4201	0.043	-0.066	0.007	0.011	0.000000	0.000000	397.65	1887.94
3	GUIDE	411701312	8.72	8403	0.063	-0.141	0.076	0.119	298.889956	40.820220	-1728.75	2126.38
4	GUIDE	411707968	7.26	8404	0.039	0.001	0.054	0.085	299.509933	40.926839	-247.13	1232.37
5	GUIDE	413405352	8.35	8399	0.017	-0.198	0.058	0.093	300.290830	41.091941	1701.39	203.92
6	GUIDE	413418680	9.30	8402	0.044	0.236	0.096	0.156	300.860298	40.740057	1969.46	-1778.96
7	GUIDE	413421016	8.71	8400	-0.161	0.101	0.068	0.110	300.612426	40.446254	752.99	-2092.32

2.4 Star Slots

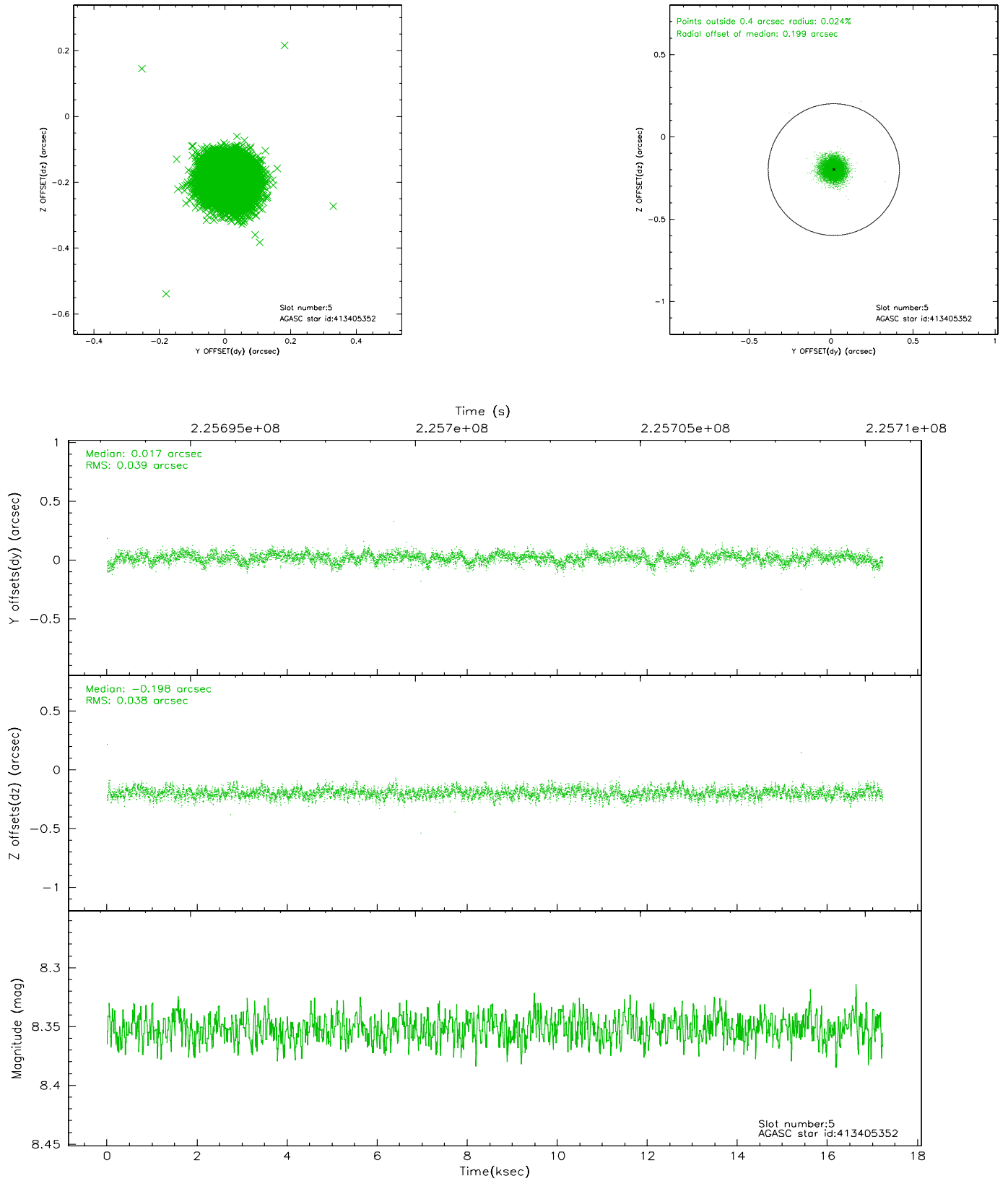
2.4.1 Slot 3



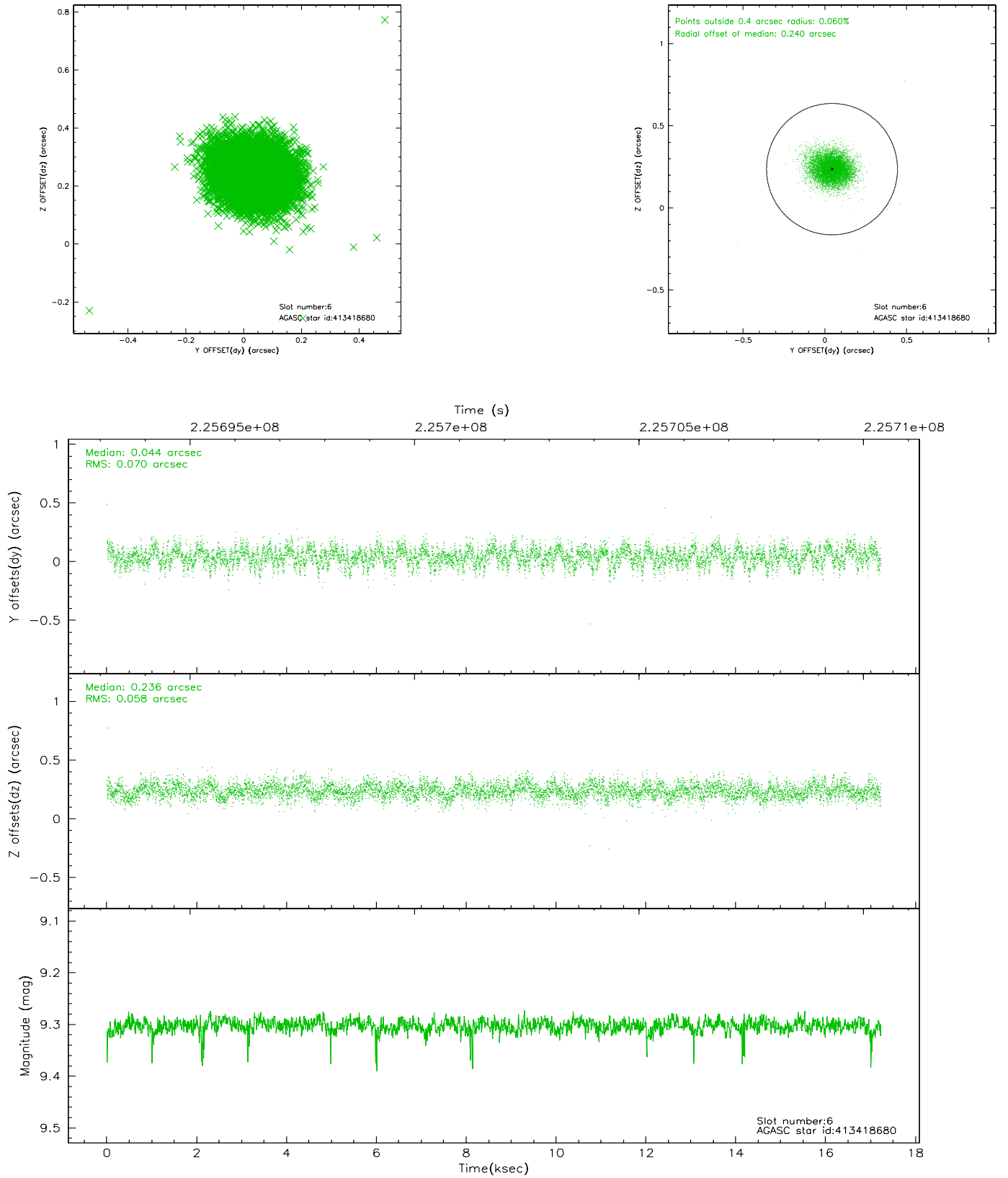
2.4.2 Slot 4



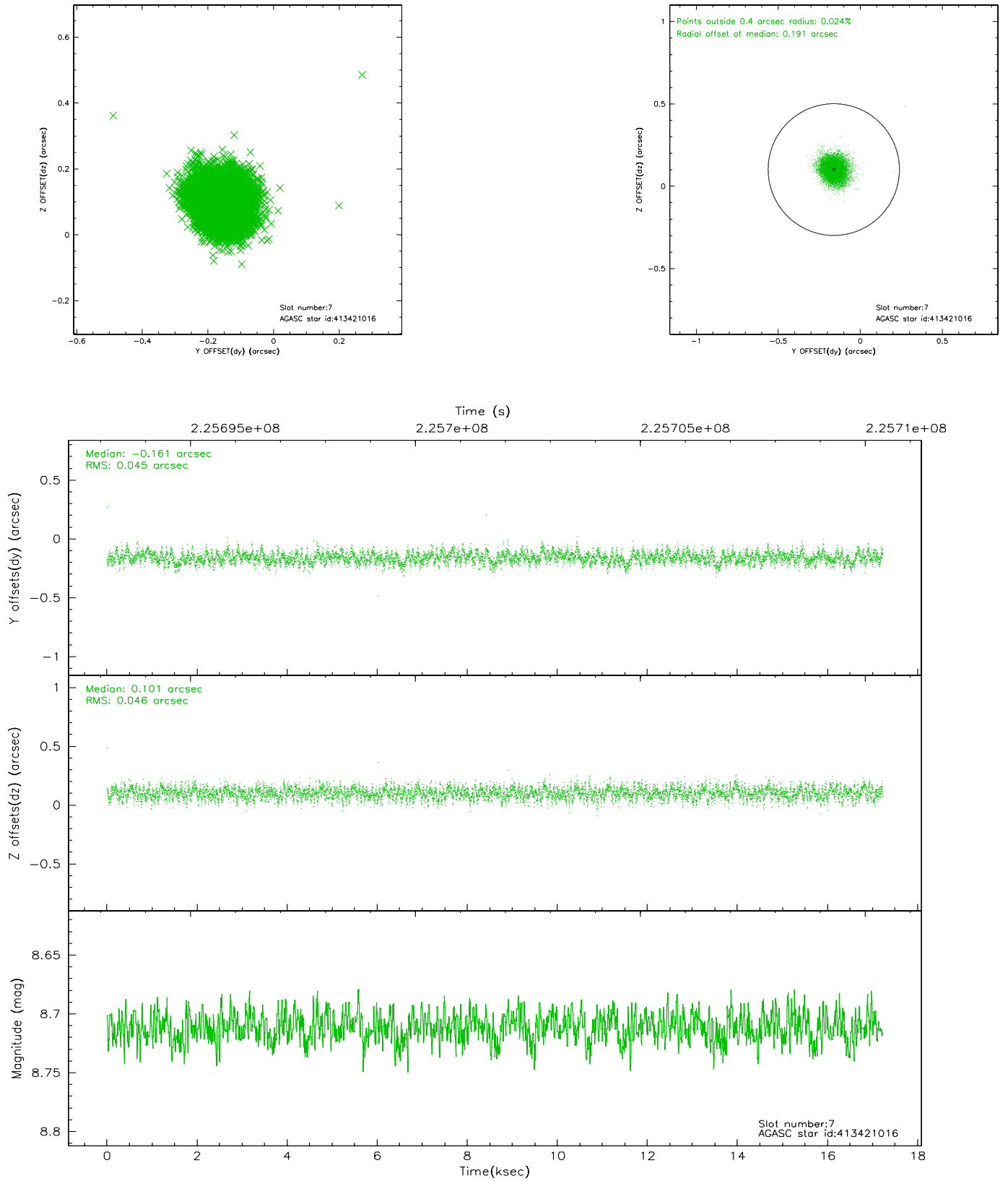
2.4.3 Slot 5



2.4.4 Slot 6

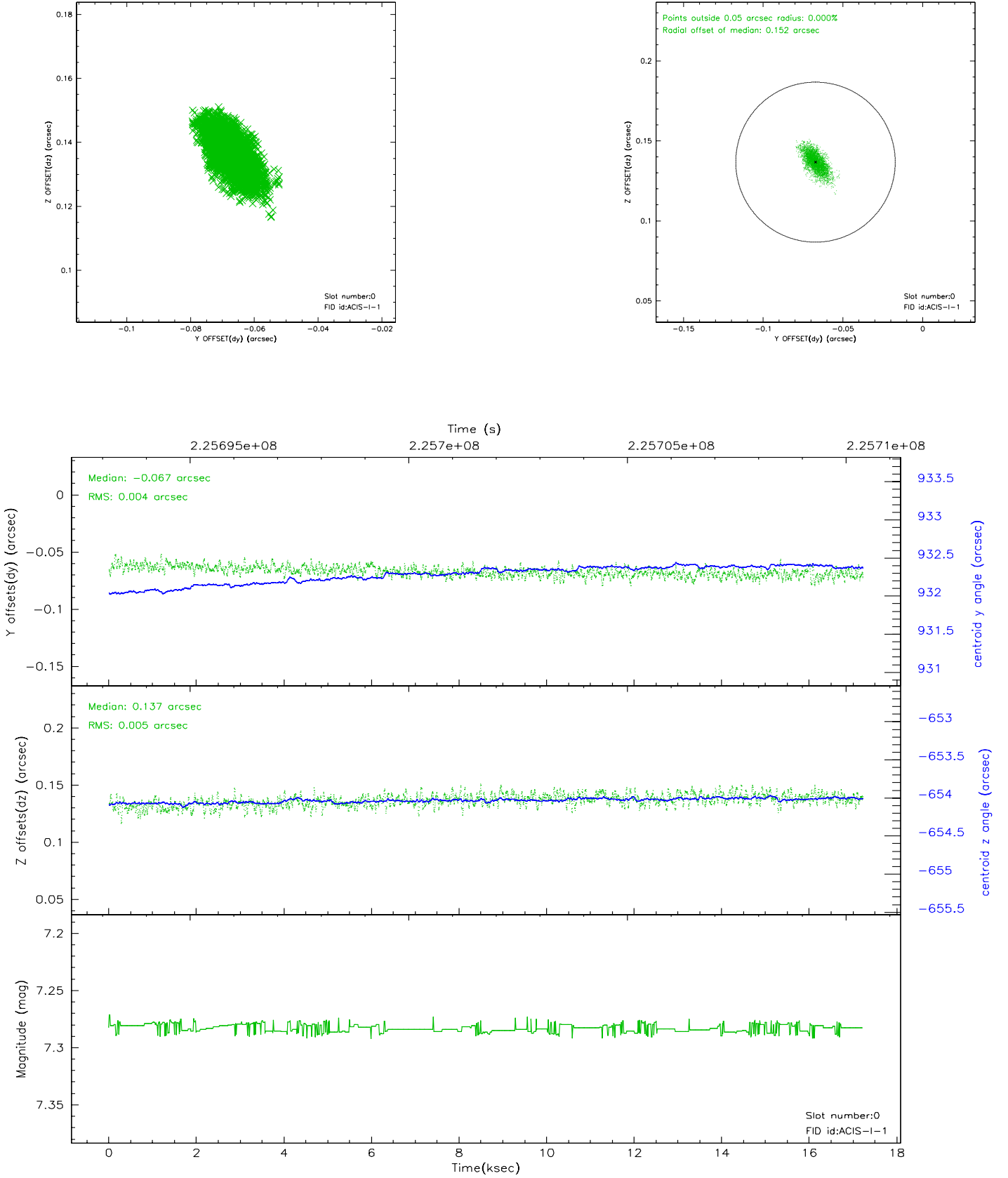


2.4.5 Slot 7

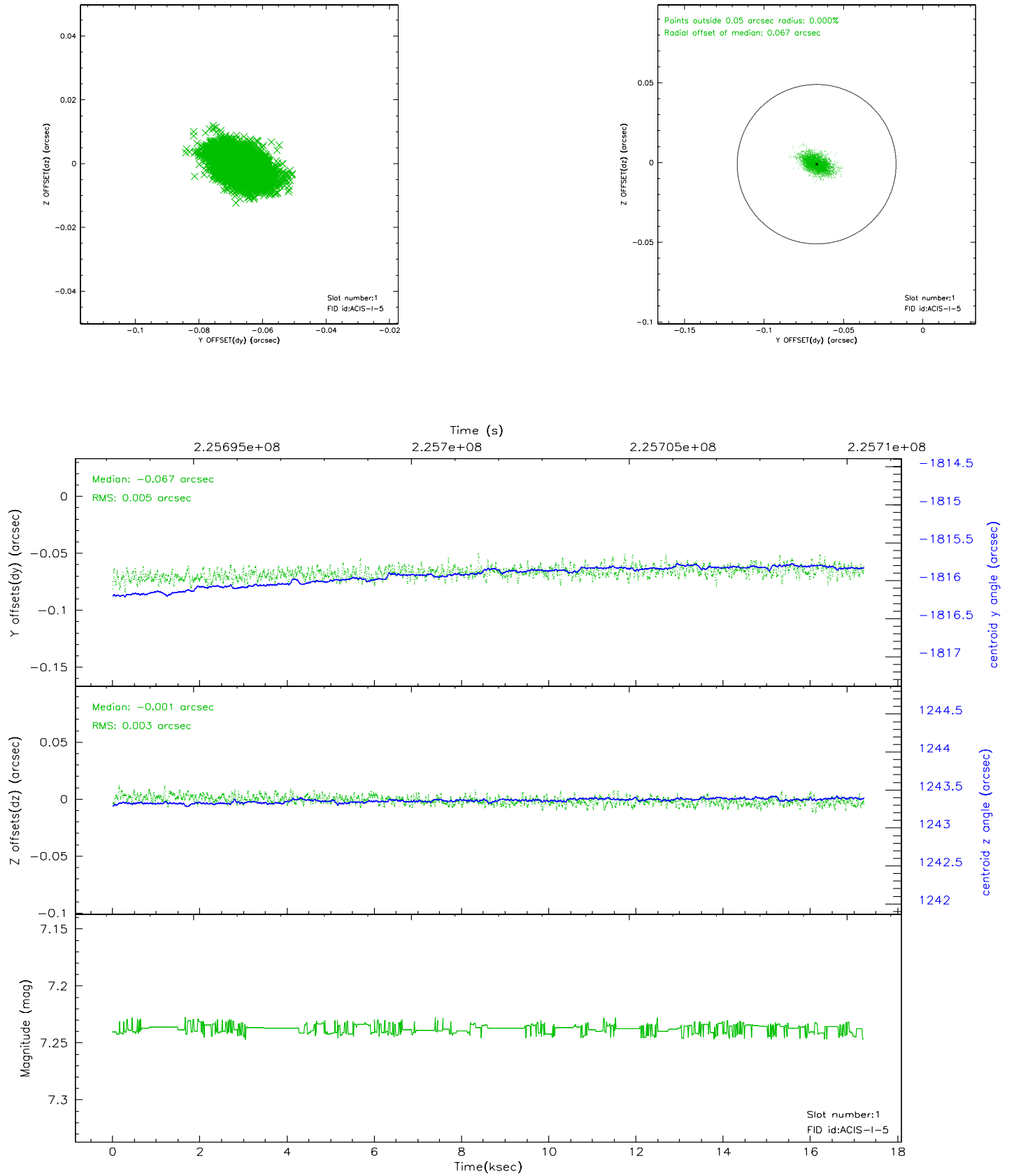


2.5 FID Slots

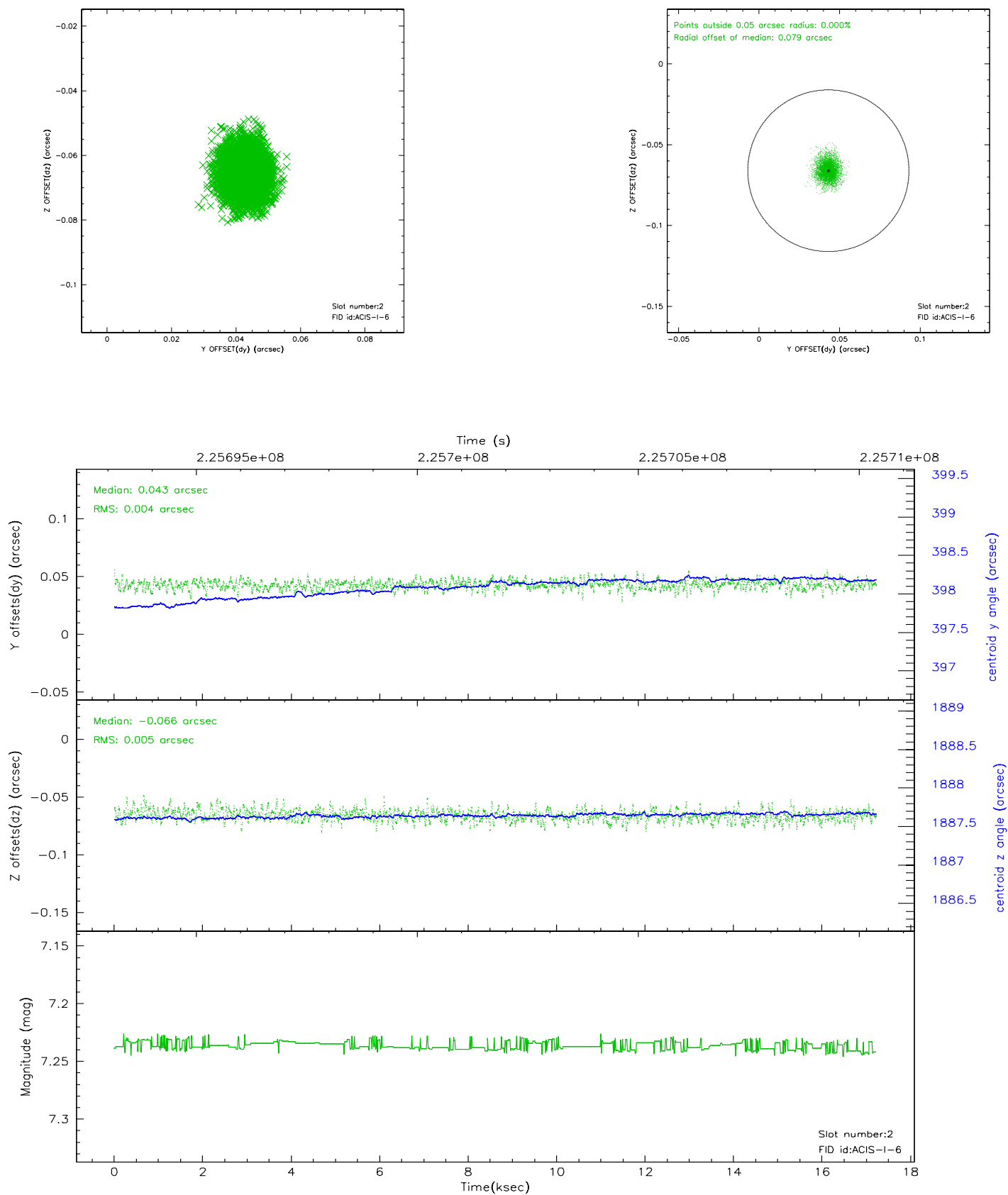
2.5.1 Slot 0



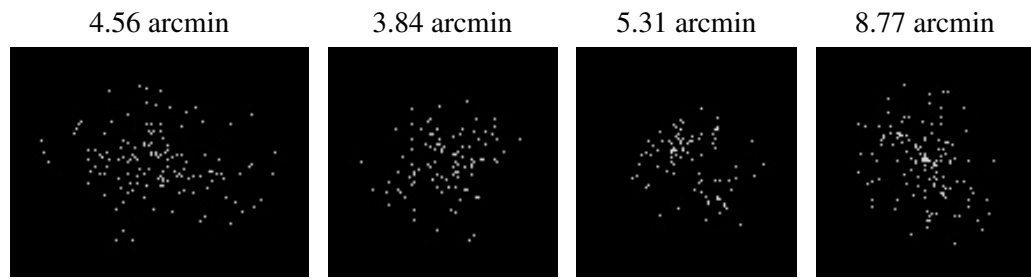
2.5.2 Slot 1



2.5.3 Slot 2



3 Point Sources



A Summary

A.1 Status

V&V Scientist	Jen Lauer
V&V Date (YYYY-MM-DD)	2006.02.27
V&V Edition	1
V&V Disposition and Status	OK
V&V Charge Time	16.25019

A.2 Comments