

V&V Reference Report

L2 ASCDS Version : 8.4.5

Observation 62108 - L2 Version 4
Chandra X-Ray Center

L2 Processing Date : Aug 24 2012

Contents

1	Front	2
2	OBI	3
2.1	OBI	3
2.1.1	Images	3
2.1.2	Bias	3
2.1.3	Parameters	4
2.1.4	Events	4
2.2	Compared Parameters	5
2.3	Star Slots	6
2.4	FID Slots	6
A	Summary	7
A.1	Status	7
A.2	Comments	7

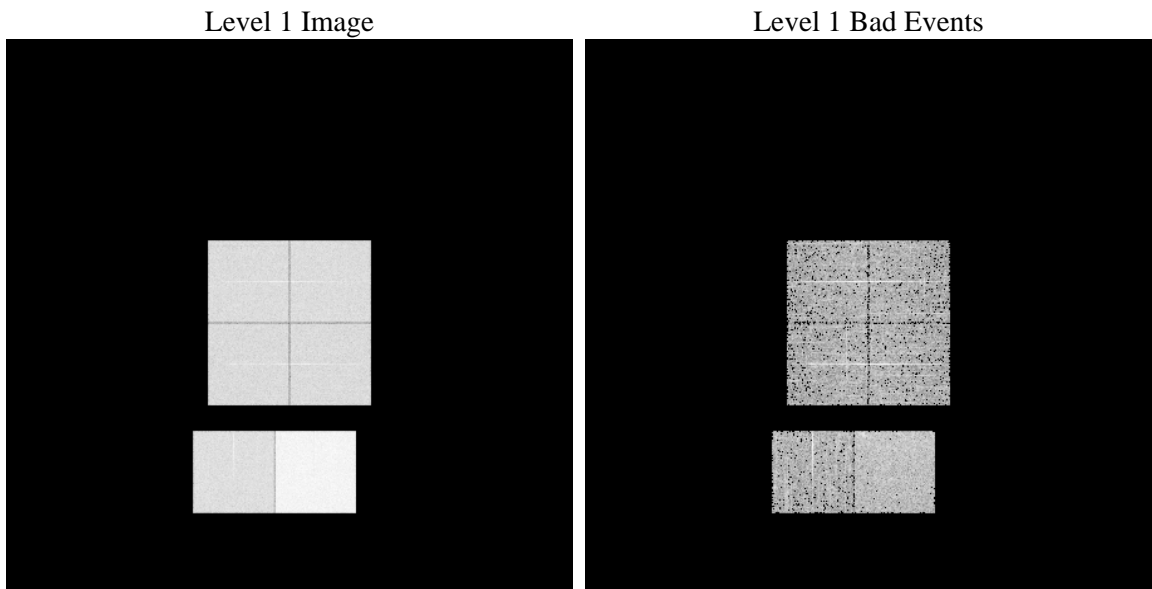
1 Front

seq_num	 	Sequence number
obs_id	62108	Observation id
title	ACIS-012367 diagnostics	Proposal title
observer	CHANDRA engineering request/realtime commanding	Principal investig
object	 	Source name
dtcycle	0	
cycle	P	events from which exps? Prim/Second/Both
ra_targ	0.0	Observer's specified target RA [deg]
dec_targ	0.0	Observer's specified target Dec [deg]
ra_nom	131.39125431497	Nominal RA [deg]
dec_nom	86.414227962584	Nominal Dec [deg]
roll_nom	233.13068297191	Nominal Roll [deg]
revision	4	Processing version of data
ontime	3490.578695178	Sum of GTIs [s]
livetime	3446.3788859655	Livetime [s]
ontime0	1484.3948306292	Sum of GTIs [s]
ontime1	1491.8600454926	Sum of GTIs [s]
ontime2	1393.6457906216	Sum of GTIs [s]
ontime3	1400.1279503703	Sum of GTIs [s]
ontime6	1569.5628454834	Sum of GTIs [s]
ontime7	3490.578695178	Sum of GTIs [s]
l2events	915211	Number of level 2 events

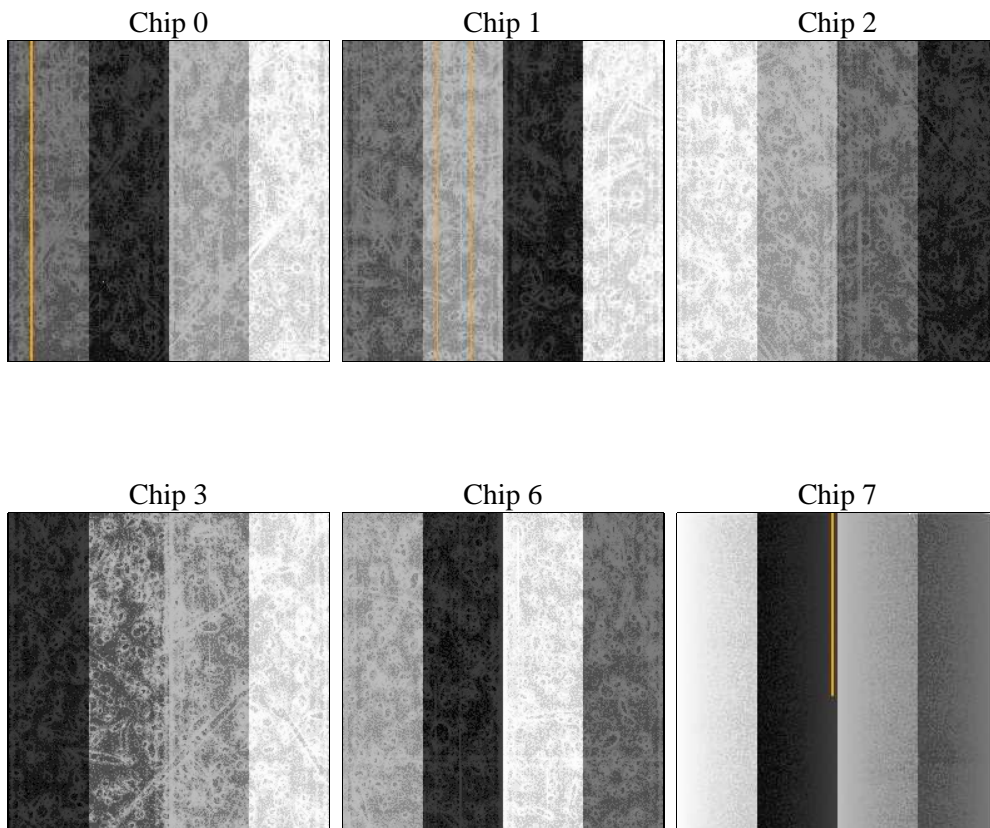
2 OBI

2.1 OBI

2.1.1 Images



2.1.2 Bias



2.1.3 Parameters

obi_num	0	Obi number	sched_exp_time	0.0	[s] Scheduled observation exposure time
ascdsver	8.4.5	Processing system revision	ontime	3490.578695178	Sum of GTIs [s]
caldsver	4.5.1.1	 	ontime0	1484.3948306292	Sum of GTIs [s]
date	2012-08-24T18:31:47	Date and time of file creation	ontime1	1491.8600454926	Sum of GTIs [s]
revision	4	Processing version of data	ontime2	1393.6457906216	Sum of GTIs [s]
			ontime3	1400.1279503703	Sum of GTIs [s]
			ontime6	1569.5628454834	Sum of GTIs [s]
			ontime7	3490.578695178	Sum of GTIs [s]
			l1events	1059708	Number of level 1 events

2.1.4 Events

	ccd 0	ccd 1	ccd 2	ccd 3	ccd 6	ccd 7		ccd 0	ccd 1	ccd 2	ccd 3	ccd 6	ccd 7
level 1 events	143137	144178	137557	139002	158871	336963	grade 0 events	71484	72461	68302	69602	78585	82533
rejected events	16110	15811	16092	16782	17148	24431		49%	50%	49%	50%	49%	24%
rejected %	11%	10%	11%	12%	10%	7%	grade 1 events	428	368	411	439	419	227
								0%	0%	0%	0%	0%	0%
							grade 2 events	22822	22675	21751	21694	24854	71180
								15%	15%	15%	15%	15%	21%
							grade 3 events	8161	8371	7793	7883	8937	32266
								5%	5%	5%	5%	5%	9%
							grade 4 events	8112	8362	7810	7831	8972	32329
								5%	5%	5%	5%	5%	9%
							grade 5 events	1034	1055	1027	989	1173	4465
								0%	0%	0%	0%	0%	1%
							grade 6 events	18714	19101	17663	17461	22456	99687
								13%	13%	12%	12%	14%	29%
							grade 7 events	12382	11785	12800	13103	13475	14276
								8%	8%	9%	9%	8%	4%

2.2 Compared Parameters

Parameter	Planned	Actual	Parameter	Planned	Actual
Instrument	ACIS	ACIS	Obspar format version number	7	7
Detector	ACIS-012367	ACIS-012367	Obspar file type	PREDICTED	ACTUAL
Grating	NONE	NONE	Obspar update status	NONE	UPDATED
Data mode	FAINT	FAINT	On-chip summing requested	N	N
Observation mode	SECONDARY	SECONDARY	Subarray requested	NONE	NONE
[deg] Pointing RA	0	131.3912543149682	Alternating exposures requested	N	N
[deg] Pointing Dec	0	86.41422796258414	[s] Primary exposure time	0.000000	3.2
[deg] Pointing Roll	0.0	233.1306829719056			
[mm] SIM focus pos	-0.782348	-0.6828225247311905			
[mm] SIM defocus	0	0.8505141146731063			
[mm] SIM translation stage pos	-233.592463	250.466033080201			
[mm] SIM translation stage offset	0	-0.01005468664627074			
[s] Observation start time (MET)	70347383.398	70347382.629343			
Observation start date	2000-03-25T04:56:23	2000-03-25T04:56:22			
[s] Observation end time (MET)	70355679.748	70355678.979646			
Observation end date	2000-03-25T07:14:40	2000-03-25T07:14:38			
Read mode	TIMED	TIMED			

2.3 Star Slots

2.4 FID Slots

A Summary

A.1 Status

V&V Scientist	Jen Lauer
V&V Date (YYYY-MM-DD)	2012.08.27
V&V Edition	1
V&V Disposition and Status	OK
V&V Charge Time	3.490578695178

A.2 Comments