

V&V Reference Report

L2 ASCDS Version : 7.6.10

Observation 61378 - L2 Version 001
Chandra X-Ray Center

L2 Processing Date : Jan 18 2007

Contents

1	Front	2
2	OBI	3
2.1	OBI	3
2.1.1	Images	3
2.1.2	Bias	3
2.1.3	Parameters	4
2.1.4	Events	4
2.2	Compared Parameters	5
2.3	Star Slots	6
2.4	FID Slots	6
A	Summary	7
A.1	Status	7
A.2	Comments	7

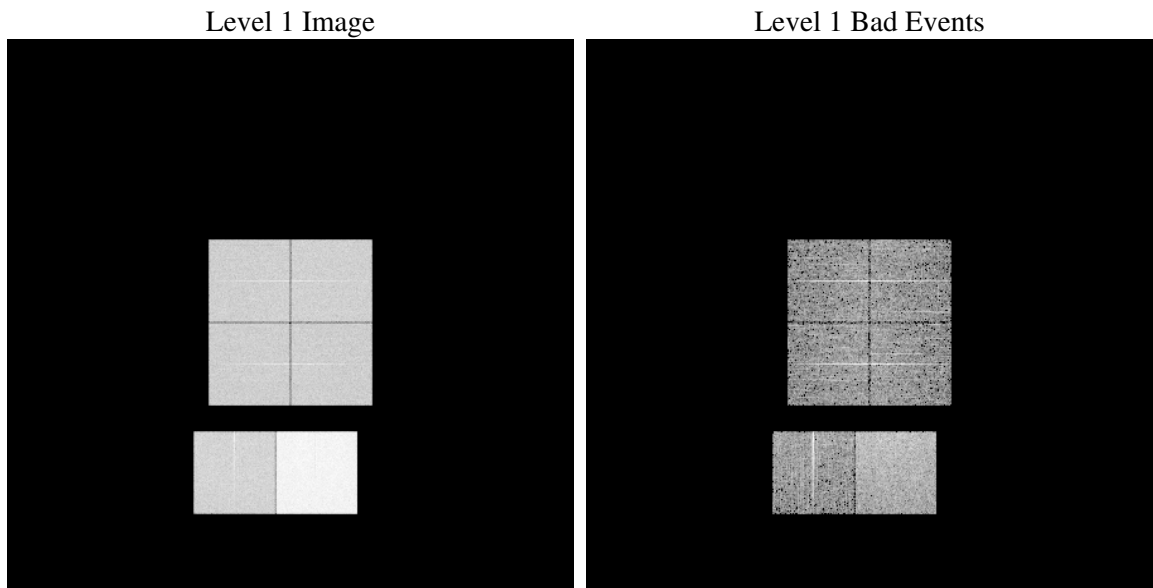
1 Front

seq_num	
obs_id	61378
title	ACIS-012367 diagnostics
observer	CHANDRA engineering request/realtime commanding
object	
dtcycle	0
cycle	P
ra_targ	0.0
dec_targ	0.0
ra_nom	95.018790896665
dec_nom	0.021549953394862
roll_nom	16.069265652588
revision	2
ontime	7492.0953797698
livetime	7397.2259568729
ontime0	2919.1054721624
ontime1	2977.4851524979
ontime2	2796.0289888382
ontime3	2789.3827089667
ontime6	3116.9317330569
ontime7	7492.0953797698
l2events	1220337

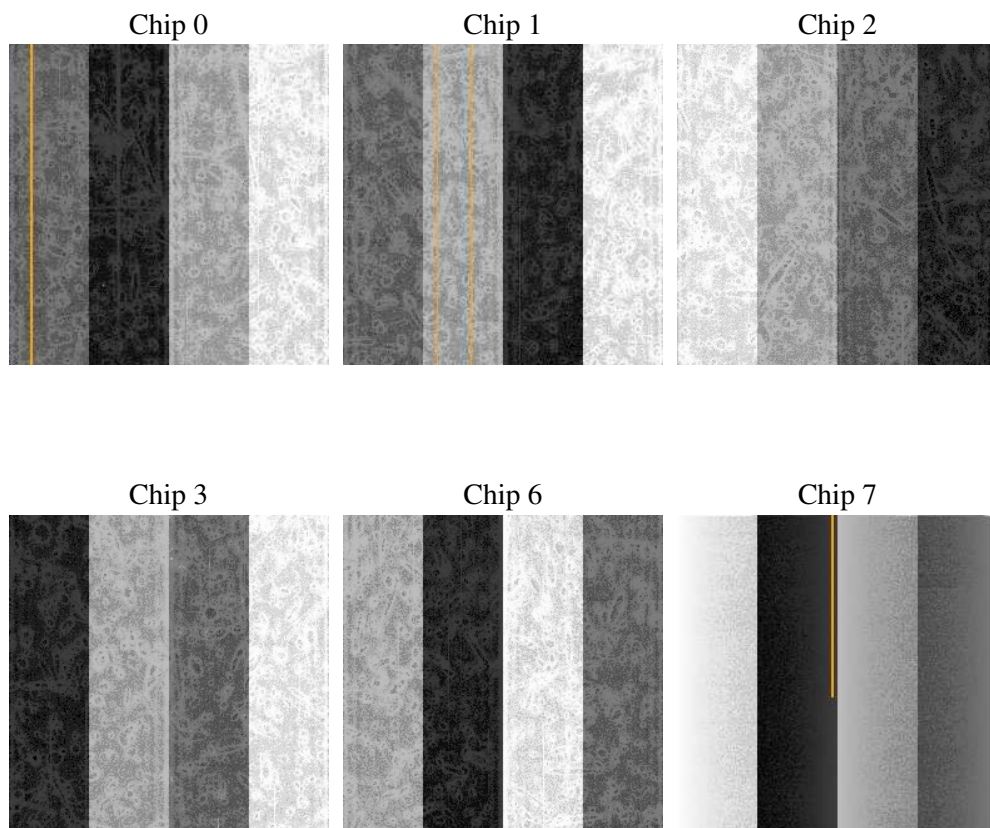
2 OBI

2.1 OBI

2.1.1 Images



2.1.2 Bias



2.1.3 Parameters

obi_num	0
ascdsver	7.6.10
caldbver	3.3.0
date	2007-01-18T10:27:24
revision	2

sched_exp_time	0.0
ontime	7492.0953797698
ontime0	2919.1054721624
ontime1	2977.4851524979
ontime2	2796.0289888382
ontime3	2789.3827089667
ontime6	3116.9317330569
ontime7	7492.0953797698
l1events	1422140

2.1.4 Events

	ccd 0	ccd 1	ccd 2	ccd 3	ccd 6	ccd 7
level 1 events	184538	188692	180317	179895	208970	479728
rejected events	21001	21452	21987	21708	24350	40248
rejected %	11%	11%	12%	12%	11%	8%

	ccd 0	ccd 1	ccd 2	ccd 3	ccd 6	ccd 7
grade 0 events	89960	92410	87609	88046	100631	112581
	48%	48%	48%	48%	48%	23%
grade 1 events	519	459	474	484	492	315
	0%	0%	0%	0%	0%	0%
grade 2 events	28830	29635	28004	27827	31674	97462
	15%	15%	15%	15%	15%	20%
grade 3 events	10352	10542	10015	9915	11628	44942
	5%	5%	5%	5%	5%	9%
grade 4 events	10234	10580	10066	10064	11452	44134
	5%	5%	5%	5%	5%	9%
grade 5 events	1529	1553	1415	1554	1761	8231
	0%	0%	0%	0%	0%	1%
grade 6 events	24161	24073	22636	22335	29235	140361
	13%	12%	12%	12%	13%	29%
grade 7 events	18953	19440	20098	19670	22097	31702
	10%	10%	11%	10%	10%	6%

2.2 Compared Parameters

Parameter	Planned	Actual	Parameter	Planned	Actual
Instrument	ACIS	ACIS	Obspar format version number	6	6
Detector	ACIS-012367	ACIS-012367	Obspar file type	PREDICTED	ACTUAL
Grating	NONE	NONE	Obspar update status	NONE	UPDATED
Data mode	FAINT	FAINT	On-chip summing requested	N	N
Observation mode	SECONDARY	SECONDARY	Subarray requested	NONE	NONE
Pointing RA	0	95.01879089666487	Alternating exposures requested	N	N
Pointing Dec	0	0.02154995339486211	Primary exposure time	0.000000	3.2
Pointing Roll	0.0	16.06926565258846			
SIM focus pos (mm)	-0.782348	-0.6828225247311905			
SIM defocus (mm)	0	0.8505141146731063			
SIM translation stage pos (mm)	-233.592463	250.4635187648994			
SIM translation stage offset (mm)	0	-0.007540371344731511			
Observation start time	125186560.351	125186559.58247			
Observation start date	2001-12-19T22:02:40	2001-12-19T22:02:39			
Observation end time	125198790.651	125198789.88296			
Observation end date	2001-12-20T01:26:31	2001-12-20T01:26:29			
Read mode	TIMED	TIMED			

2.3 Star Slots

2.4 FID Slots

A Summary

A.1 Status

V&V Scientist	Jen Lauer
V&V Date (YYYY-MM-DD)	2007.01.18
V&V Edition	1
V&V Disposition and Status	OK
V&V Charge Time	7.49209537

A.2 Comments