

V&V Reference Report

L2 ASCDS Version : 8.4.5

Observation 61298 - L2 Version 3
Chandra X-Ray Center

L2 Processing Date : Oct 3 2012

Contents

1	Front	2
2	OBI	3
2.1	OBI	3
2.1.1	Images	3
2.1.2	Bias	3
2.1.3	Parameters	4
2.1.4	Events	4
2.2	Compared Parameters	5
2.3	Star Slots	6
2.4	FID Slots	6
A	Summary	7
A.1	Status	7
A.2	Comments	7

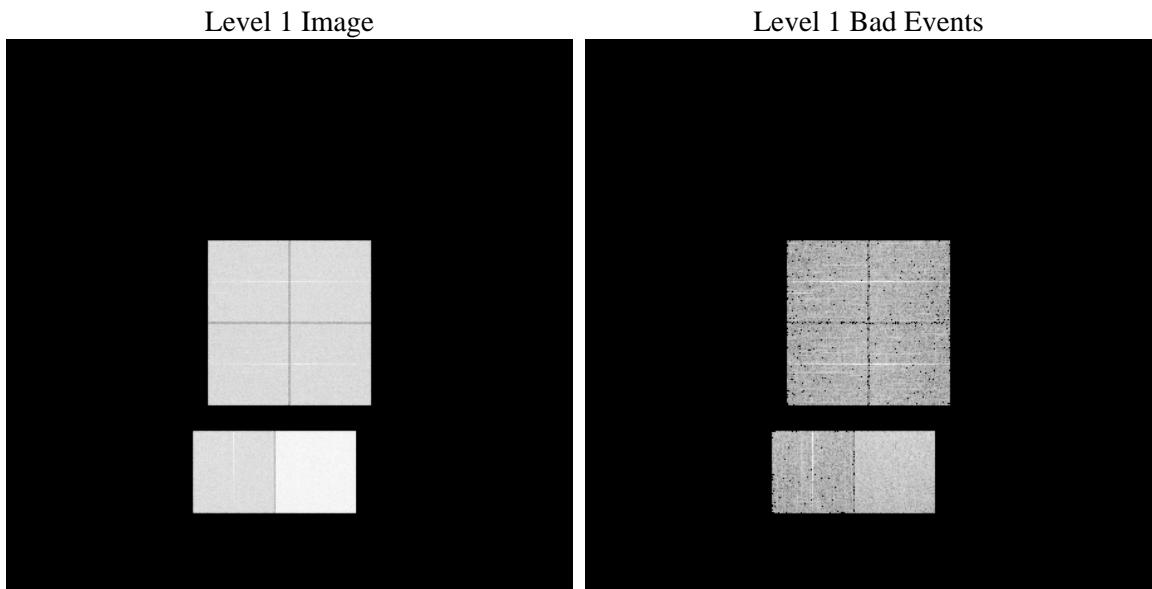
1 Front

seq_num	 	Sequence number
obs_id	61298	Observation id
title	ACIS-012367 diagnostics	Proposal title
observer	CHANDRA engineering request/realtime commanding	Principal investig
object	 	Source name
dtcycle	0	
cycle	P	events from which exps? Prim/Second/Both
ra_targ	0.0	Observer's specified target RA [deg]
dec_targ	0.0	Observer's specified target Dec [deg]
ra_nom	239.98539918816	Nominal RA [deg]
dec_nom	30.025708481727	Nominal Dec [deg]
roll_nom	83.50349859255	Nominal Roll [deg]
revision	3	Processing version of data
ontime	8396.8000078052	Sum of GTIs [s]
livetime	8290.4746701604	Livetime [s]
ontime0	3357.4233950078	Sum of GTIs [s]
ontime1	3473.7586005479	Sum of GTIs [s]
ontime2	3195.4537044019	Sum of GTIs [s]
ontime3	3243.646535337	Sum of GTIs [s]
ontime6	3538.5790419281	Sum of GTIs [s]
ontime7	8396.8000078052	Sum of GTIs [s]
l2events	1320762	Number of level 2 events

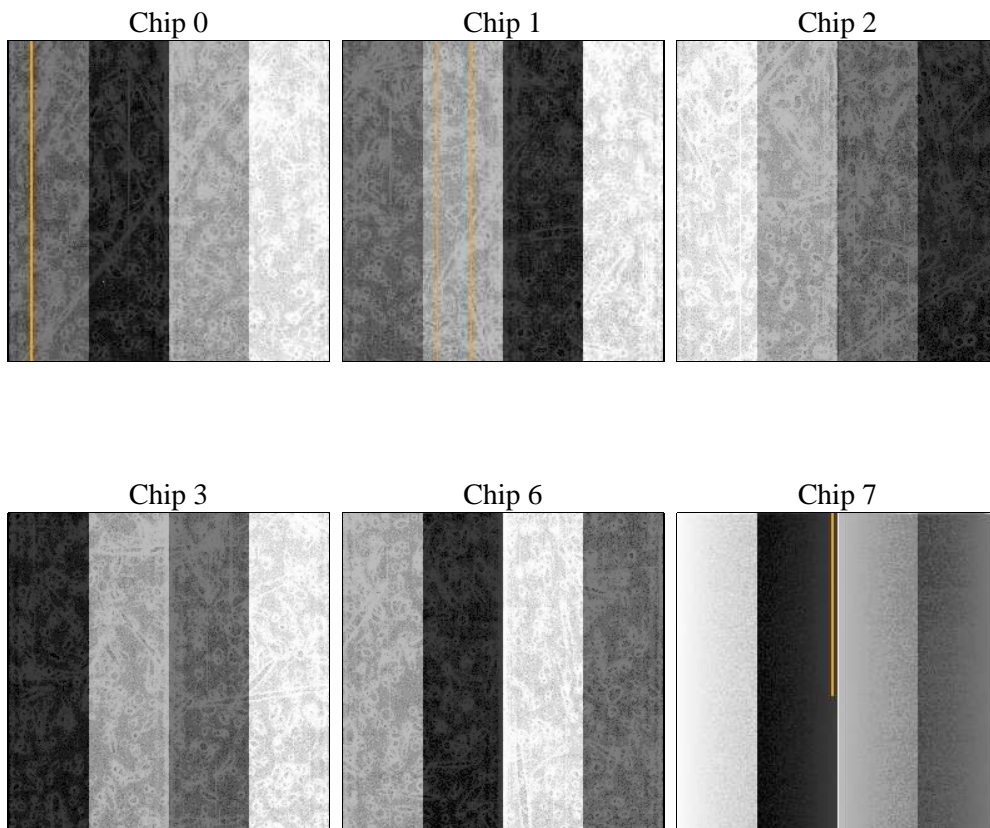
2 OBI

2.1 OBI

2.1.1 Images



2.1.2 Bias



2.1.3 Parameters

obi_num	0	Obi number	sched_exp_time	0.0	[s] Scheduled observation exposure time
ascdsver	8.4.5	Processing system revision	ontime	8396.8000078052	Sum of GTIs [s]
caldsver	4.5.2	 	ontime0	3357.4233950078	Sum of GTIs [s]
date	2012-10-03T02:48:32	Date and time of file creation	ontime1	3473.7586005479	Sum of GTIs [s]
revision	3	Processing version of data	ontime2	3195.4537044019	Sum of GTIs [s]
			ontime3	3243.646535337	Sum of GTIs [s]
			ontime6	3538.5790419281	Sum of GTIs [s]
			ontime7	8396.8000078052	Sum of GTIs [s]
			l1events	1563312	Number of level 1 events

2.1.4 Events

	ccd 0	ccd 1	ccd 2	ccd 3	ccd 6	ccd 7		ccd 0	ccd 1	ccd 2	ccd 3	ccd 6	ccd 7
level 1 events	205394	212405	198287	202474	226334	518418	grade 0 events	98821	102816	96421	98188	108420	118306
rejected events	26756	26974	26602	27243	28363	51057		48%	48%	48%	48%	47%	22%
rejected %	13%	12%	13%	13%	12%	9%	grade 1 events	580	549	530	539	555	311
								0%	0%	0%	0%	0%	0%
							grade 2 events	32018	33096	30123	31559	34562	103135
								15%	15%	15%	15%	15%	19%
							grade 3 events	11466	11887	10655	11292	12293	48048
								5%	5%	5%	5%	5%	9%
							grade 4 events	11333	11792	10871	11161	12232	47405
								5%	5%	5%	5%	5%	9%
							grade 5 events	1752	1849	1633	1751	2078	9519
								0%	0%	0%	0%	0%	1%
							grade 6 events	26349	27421	24850	24444	31504	154181
								12%	12%	12%	12%	13%	29%
							grade 7 events	23075	22995	23204	23540	24690	37513
								11%	10%	11%	11%	10%	7%

2.2 Compared Parameters

Parameter	Planned	Actual	Parameter	Planned	Actual
Instrument	ACIS	ACIS	Obspar format version number	7	7
Detector	ACIS-012367	ACIS-012367	Obspar file type	PREDICTED	ACTUAL
Grating	NONE	NONE	Obspar update status	NONE	UPDATED
Data mode	FAINT	FAINT	On-chip summing requested	N	N
Observation mode	SECONDARY	SECONDARY	Subarray requested	NONE	NONE
[deg] Pointing RA	0	239.9853991881644	Alternating exposures requested	N	N
[deg] Pointing Dec	0	30.02570848172742	[s] Primary exposure time	0.000000	3.2
[deg] Pointing Roll	0.0	83.50349859254952			
[mm] SIM focus pos	-0.782348	-0.7809083437167272			
[mm] SIM defocus	0	0.7524282956875696			
[mm] SIM translation stage pos	-233.592463	250.466033080201			
[mm] SIM translation stage offset	0	-0.01005468664627074			
[s] Observation start time (MET)	130714518.823	130714518.05498			
Observation start date	2002-02-21T21:35:19	2002-02-21T21:35:18			
[s] Observation end time (MET)	130729451.024	130729450.25558			
Observation end date	2002-02-22T01:44:11	2002-02-22T01:44:10			
Read mode	TIMED	TIMED			

2.3 Star Slots

2.4 FID Slots

A Summary

A.1 Status

V&V Scientist	Beth Sundheim
V&V Date (YYYY-MM-DD)	2012.10.04
V&V Edition	1
V&V Disposition and Status	OK
V&V Charge Time	8.3968000078052

A.2 Comments