

# V&V Reference Report

## L2 ASCDS Version : 7.6.8.1

Observation 61268 - L2 Version 001  
Chandra X-Ray Center

L2 Processing Date : Sep 6 2006

## Contents

<b>1</b>	<b>Front</b>	<b>2</b>
<b>2</b>	<b>OBI</b>	<b>3</b>
2.1	OBI . . . . .	3
2.1.1	Images . . . . .	3
2.1.2	Bias . . . . .	3
2.1.3	Parameters . . . . .	4
2.1.4	Events . . . . .	4
2.2	Compared Parameters . . . . .	5
2.3	Aspect . . . . .	6
2.4	Star Slots . . . . .	8
2.5	FID Slots . . . . .	8
<b>A</b>	<b>Summary</b>	<b>9</b>
A.1	Status . . . . .	9
A.2	Comments . . . . .	9

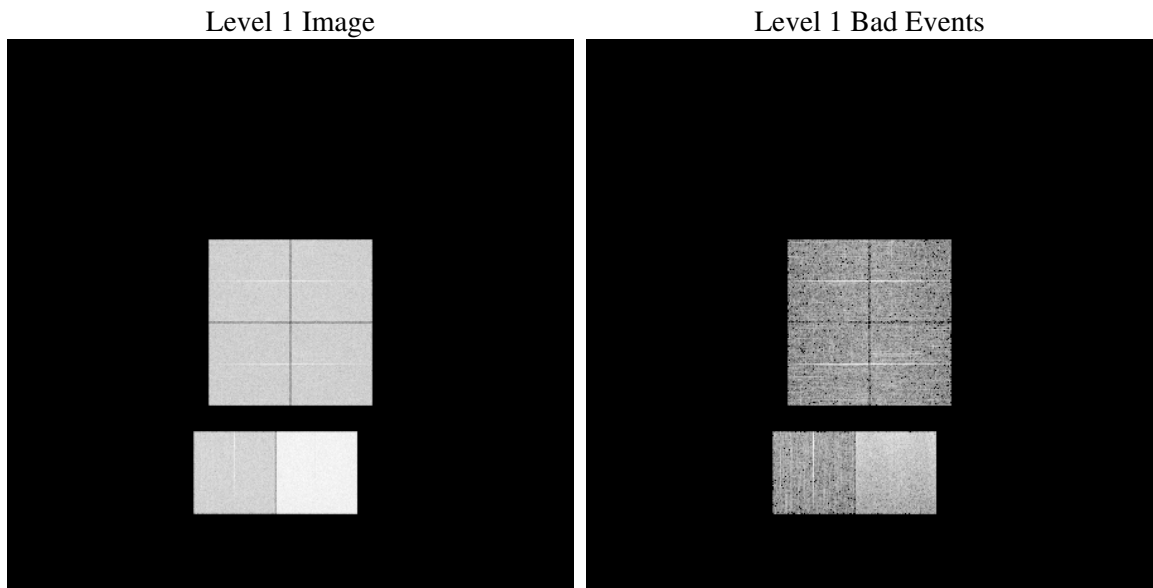
# 1 Front

seq_num	&#160
obs_id	61268
title	ACIS-012367 diagnostics
observer	CHANDRA engineering request/realtime commanding
object	&#160
dtcycle	0
cycle	P
ra_targ	0.0
dec_targ	0.0
ra_nom	229.98827227312
dec_nom	-7.9738513282607
roll_nom	81.179736721213
revision	2
ontime	8448.0000078678
livetime	8341.0263449933
ontime0	3491.0542896688
ontime1	3507.3003001809
ontime2	3294.8428829312
ontime3	3332.1617480814
ontime6	3594.8901608735
ontime7	8448.0000078678
l2events	1308736

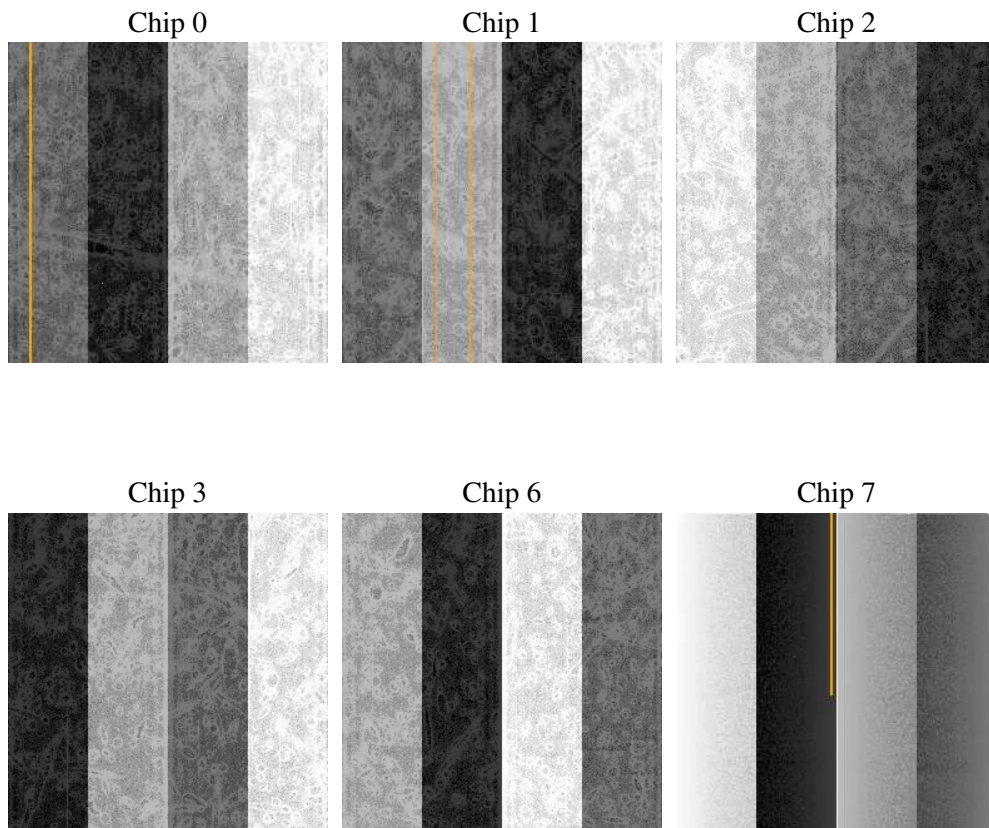
## 2 OBI

### 2.1 OBI

#### 2.1.1 Images



#### 2.1.2 Bias



### 2.1.3 Parameters

obi_num	0
ascdsver	7.6.8.1
caldsver	3.2.3
date	2006-09-06T20:59:43
revision	2

sched_exp_time	0.0
ontime	8465.4953425974
ontime0	3500.3177007288
ontime1	3516.5226712525
ontime2	3302.615267083
ontime3	3341.507239148
ontime6	3604.0304519385
ontime7	8465.4953425974
l1events	1562878

### 2.1.4 Events

	ccd 0	ccd 1	ccd 2	ccd 3	ccd 6	ccd 7
level 1 events	209070	210058	201504	203685	227574	510987
rejected events	25716	25337	26228	27069	29256	64539
rejected %	12%	12%	13%	13%	12%	12%

	ccd 0	ccd 1	ccd 2	ccd 3	ccd 6	ccd 7
grade 0 events	100649	102337	97351	98939	107912	81280
	48%	48%	48%	48%	47%	15%
grade 1 events	539	537	497	488	564	189
	0%	0%	0%	0%	0%	0%
grade 2 events	32697	32548	30891	30907	34764	135665
	15%	15%	15%	15%	15%	26%
grade 3 events	11692	11670	11065	11148	12257	33273
	5%	5%	5%	5%	5%	6%
grade 4 events	11674	11775	11120	11237	12330	32306
	5%	5%	5%	5%	5%	6%
grade 5 events	1750	1845	1654	1800	1974	8540
	0%	0%	0%	0%	0%	1%
grade 6 events	27203	26924	25349	24887	31602	164948
	13%	12%	12%	12%	13%	32%
grade 7 events	22866	22422	23577	24279	26171	54786
	10%	10%	11%	11%	11%	10%

## 2.2 Compared Parameters

Parameter	Planned	Actual	Parameter	Planned	Actual
Instrument	ACIS	ACIS	Obspar format version number	6	6
Detector	ACIS-012367	ACIS-012367	Obspar file type	PREDICTED	ACTUAL
Grating	NONE	NONE	Obspar update status	NONE	UPDATED
Data mode	FAINT	FAINT	On-chip summing requested	N	N
Observation mode	SECONDARY	SECONDARY	Subarray requested	NONE	NONE
Pointing RA	0	229.9882722731192	Alternating exposures requested	N	N
Pointing Dec	0	-7.973851328260708	Primary exposure time	0.000000	3.2
Pointing Roll	0.0	81.17973672121336			
SIM focus pos (mm)	-0.782348	-0.6828225247311905			
SIM defocus (mm)	0	0.8505141146731063			
SIM translation stage pos (mm)	-233.592463	250.466033080201			
SIM translation stage offset (mm)	0	-0.01005468664627074			
Observation start time	132304812.538	132304811.7693			
Observation start date	2002-03-12T07:20:13	2002-03-12T07:20:11			
Observation end time	132326899.239	132326898.47019			
Observation end date	2002-03-12T13:28:19	2002-03-12T13:28:18			
Read mode	TIMED	TIMED			

## 2.3 Aspect



## **2.4 Star Slots**

## **2.5 FID Slots**



## A Summary

### A.1 Status

V&V Scientist	Jen Lauer
V&V Date (YYYY-MM-DD)	2006.09.07
V&V Edition	1
V&V Disposition and Status	OK
V&V Charge Time	8.448

### A.2 Comments