

V&V Reference Report

L2 ASCDS Version : 7.6.7.1

Observation 6098 - L2 Version 001
Chandra X-Ray Center

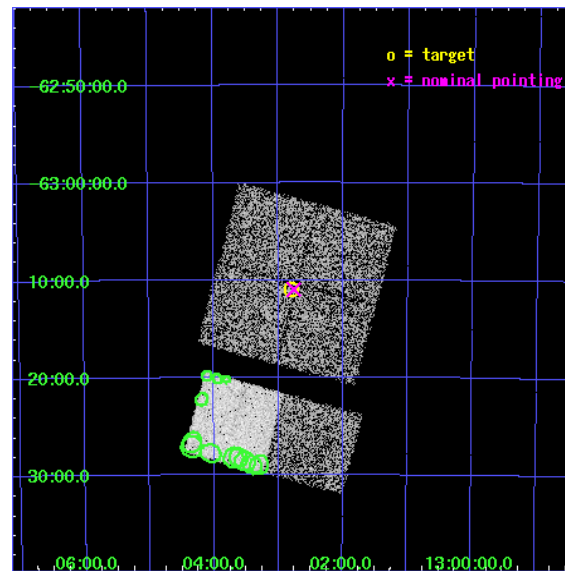
L2 Processing Date : Apr 16 2006

Contents

1	Front	2
2	OBI	3
2.1	OBI	3
2.1.1	Images	3
2.1.2	Bias	3
2.1.3	Parameters	4
2.1.4	Events	4
2.2	Compared Parameters	5
2.3	Aspect	6
2.4	Star Slots	9
2.4.1	Slot 3	9
2.4.2	Slot 4	10
2.4.3	Slot 5	11
2.4.4	Slot 6	12
2.4.5	Slot 7	13
2.5	FID Slots	14
2.5.1	Slot 0	14
2.5.2	Slot 1	15
2.5.3	Slot 2	16
3	Point Sources	17
A	Summary	18
A.1	Status	18
A.2	Comments	18

1 Front

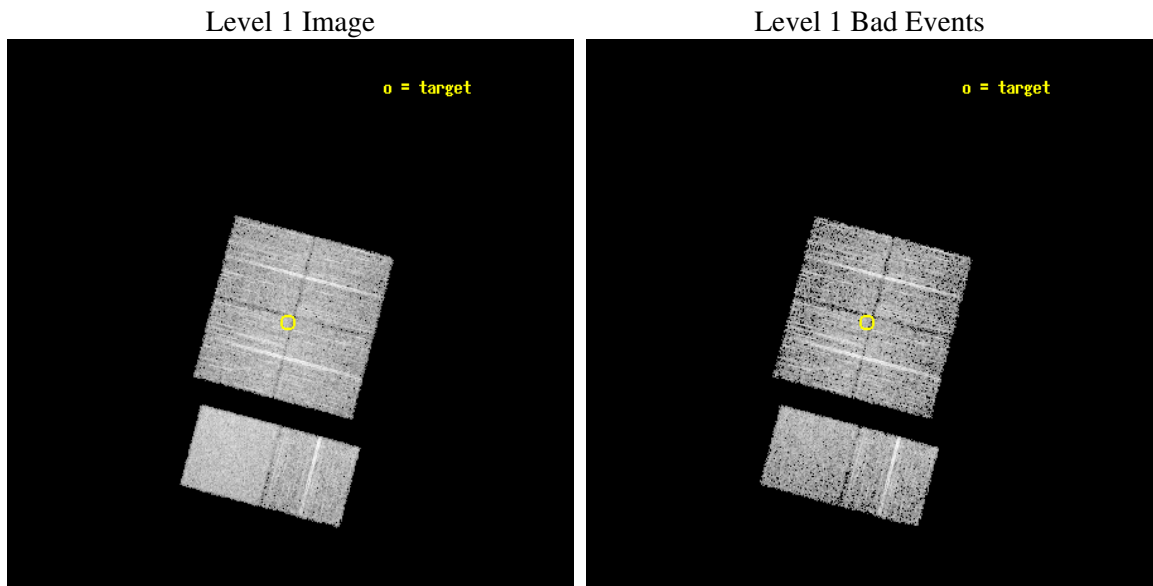
seq_num	500585
obs_id	6098
title	Search for the Counterpart of a New TeV Gamma-ray Source in the Galactic Plane
observer	Prof. JULES HALPERN
object	VHE J1303-63
dtcycle	0
cycle	P
ra_targ	195.7
dec_targ	-63.183333
ra_nom	195.68968792719
dec_nom	-63.182674590505
roll_nom	194.85138788409
revision	2
ontime	4707.1999824643
livetime	4647.5945819508
ontime0	4707.1999824643
ontime1	4707.1999824643
ontime2	4707.1999824643
ontime3	4707.1999824643
ontime6	4707.1999824643
ontime7	4707.1999824643
l2events	37033



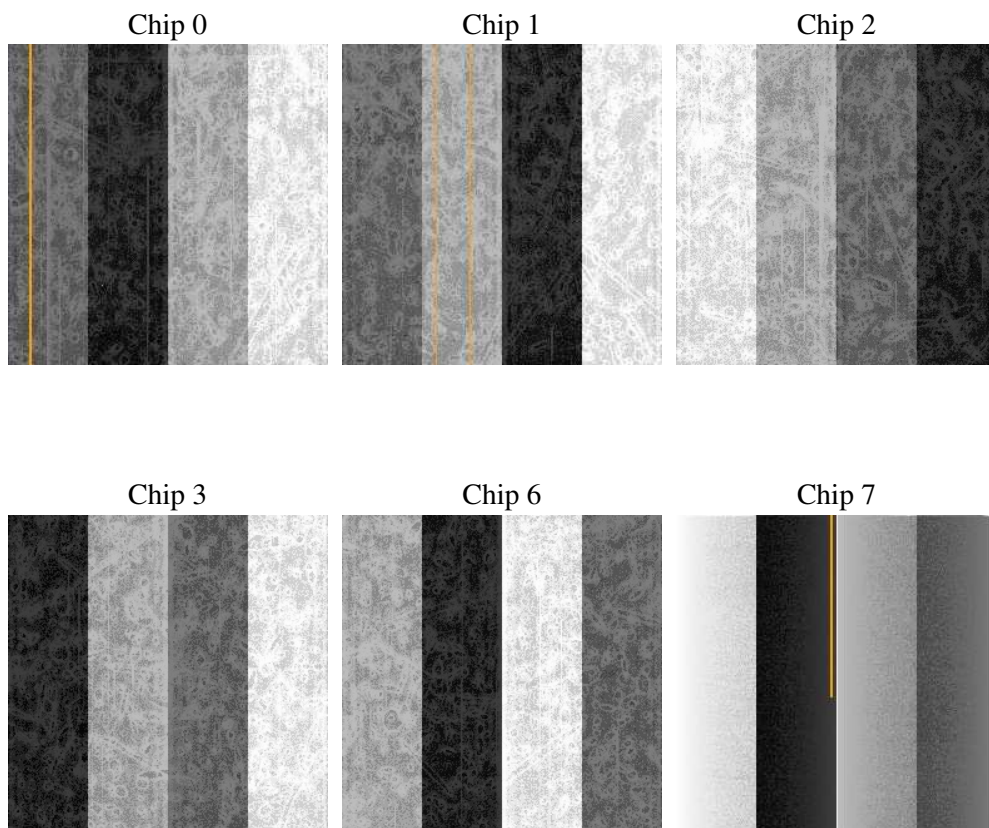
2 OBI

2.1 OBI

2.1.1 Images



2.1.2 Bias



2.1.3 Parameters

obi_num	1
ascdsver	7.6.7.1
caldsver	3.2.1
date	2006-04-16T16:59:07
revision	2

sched_exp_time	4750.000000
ontime	4712.4132508636
ontime0	4712.4132508636
ontime1	4712.4132508636
ontime2	4712.4132508636
ontime3	4712.4132508636
ontime6	4712.4132508636
ontime7	4712.4132707715
l1events	221528

2.1.4 Events

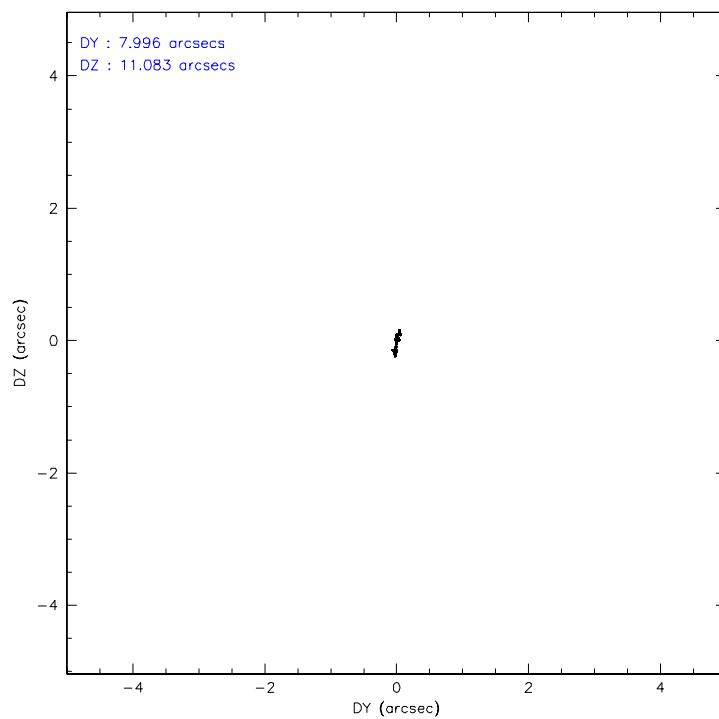
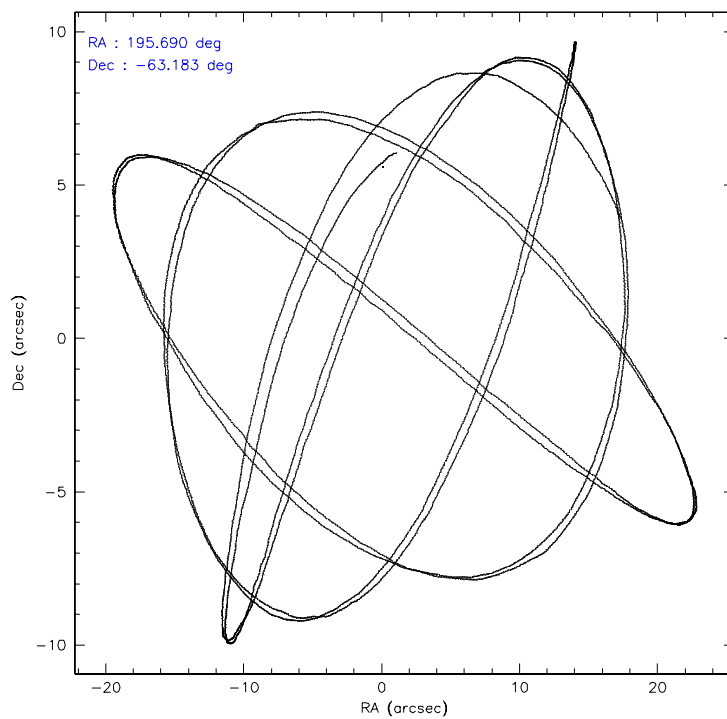
	ccd 0	ccd 1	ccd 2	ccd 3	ccd 6	ccd 7
level 1 events	33525	32211	35404	36808	36683	46897
rejected events	28909	27418	30976	32447	32304	28962
rejected %	86%	85%	87%	88%	88%	61%

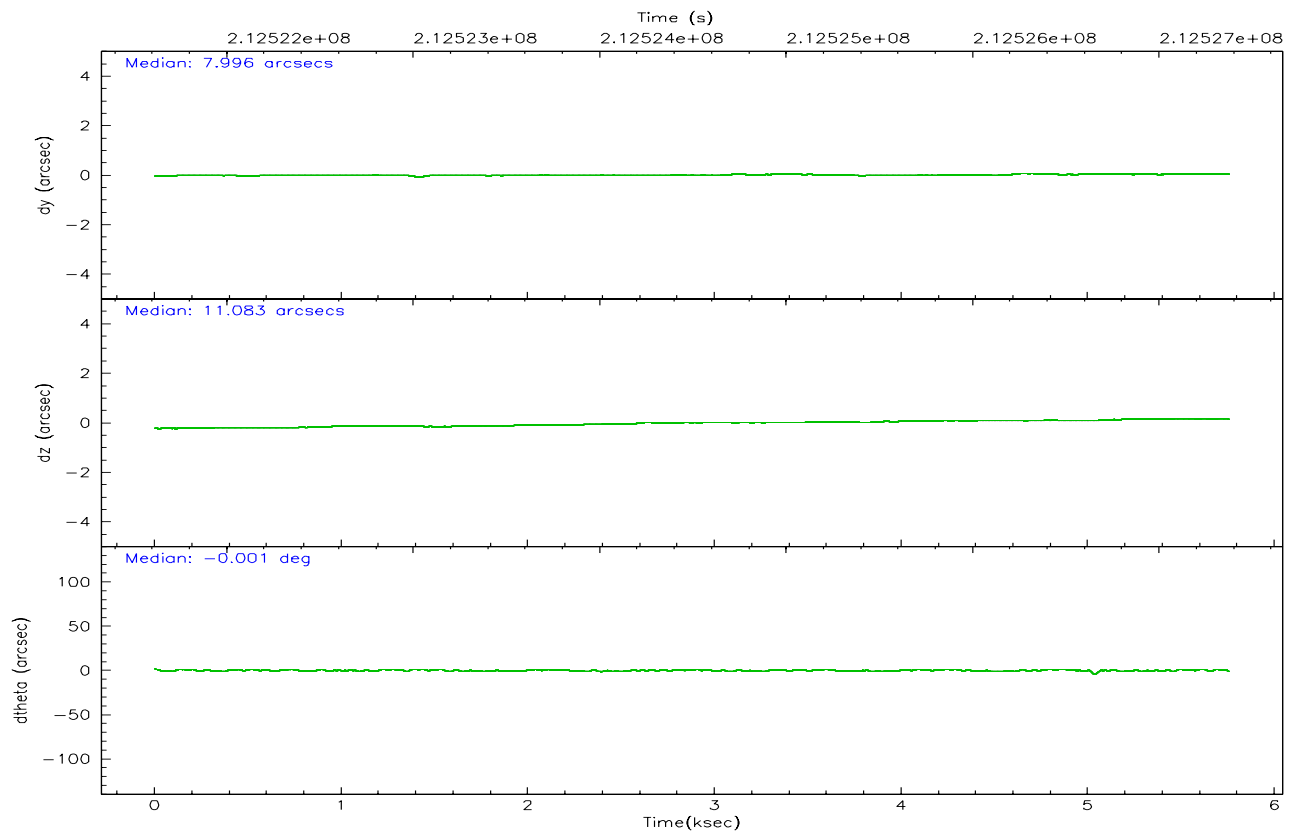
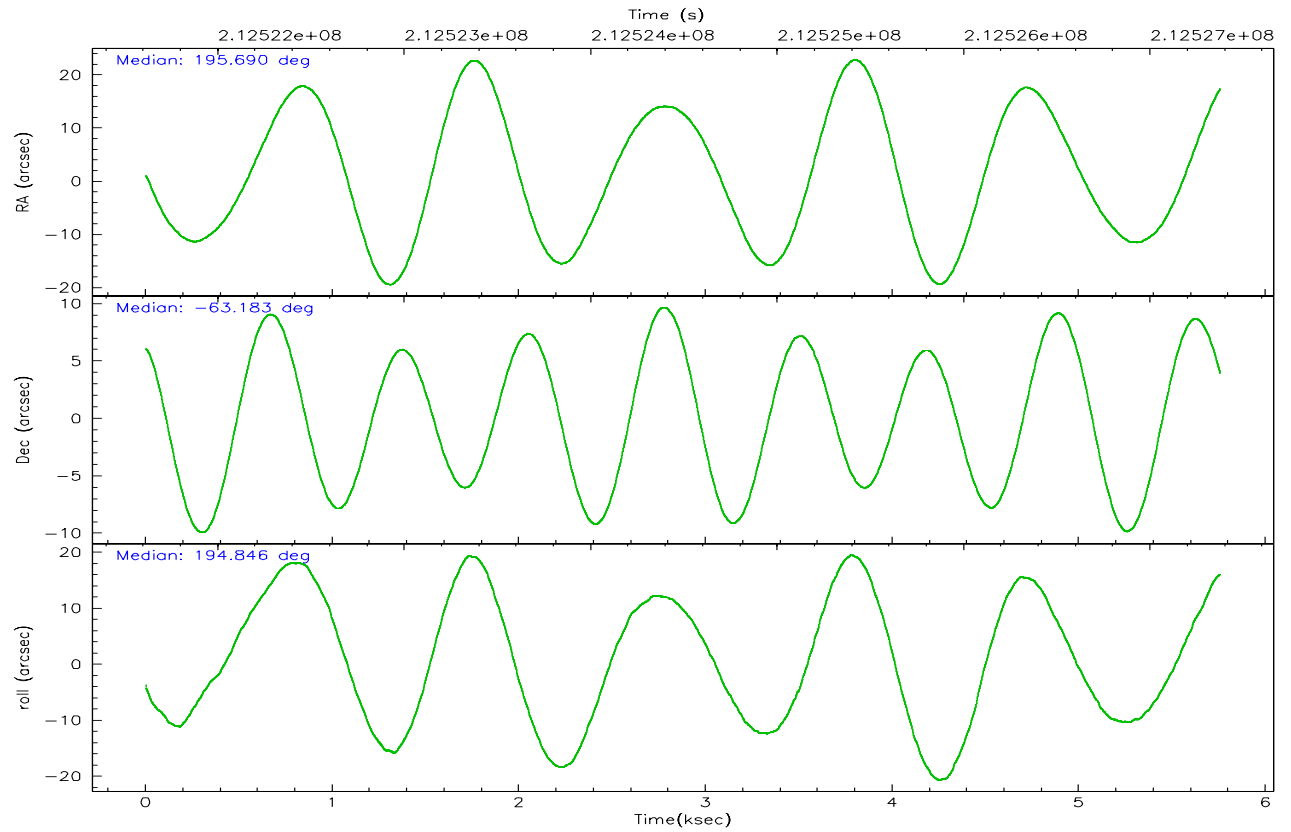
	ccd 0	ccd 1	ccd 2	ccd 3	ccd 6	ccd 7
grade 0 events	2055	1979	2007	1988	1763	946
	6%	6%	5%	5%	4%	2%
grade 1 events	20	16	19	22	17	34
	0%	0%	0%	0%	0%	0%
grade 2 events	981	1061	880	840	942	4509
	2%	3%	2%	2%	2%	9%
grade 3 events	451	445	416	416	432	848
	1%	1%	1%	1%	1%	1%
grade 4 events	375	433	399	433	398	805
	1%	1%	1%	1%	1%	1%
grade 5 events	1376	1450	1310	1573	1611	3082
	4%	4%	3%	4%	4%	6%
grade 6 events	759	878	728	688	848	10844
	2%	2%	2%	1%	2%	23%
grade 7 events	27508	25949	29645	30848	30672	25829
	82%	80%	83%	83%	83%	55%

2.2 Compared Parameters

Parameter	Planned	Actual	Parameter	Planned	Actual
Instrument	ACIS	ACIS	Obspar format version number	6	6
Detector	ACIS-012367	ACIS-012367	Obspar file type	PREDICTED	ACTUAL
Grating	NONE	NONE	Obspar update status	NONE	UPDATED
Data mode	VFAINT	VFAINT	On-chip summing requested	N	N
Observation mode	POINTING	POINTING	Subarray requested	NONE	NONE
Pointing RA	195.732656	195.689687927193	Alternating exposures requested	N	N
Pointing Dec	-63.163276	-63.18267459050519	Primary exposure time	0.000000	3.2
Pointing Roll	194.681047	194.8513878840905			
SIM focus pos (mm)	-0.782348	-0.7809083437167272			
SIM defocus (mm)	0	0.001439871863259334			
SIM translation stage pos (mm)	-233.592463	-233.5874344608287			
SIM translation stage offset (mm)	0	-0.005018542100998502			
Observation start time	212522625.184000	212521251.12246			
Observation start date	2004-09-25T18:02:41	2004-09-25T17:40:51			
Observation end time	212527375.184000	212528892.4978			
Observation end date	2004-09-25T19:21:51	2004-09-25T19:48:12			
Read mode	TIMED	TIMED			

2.3 Aspect



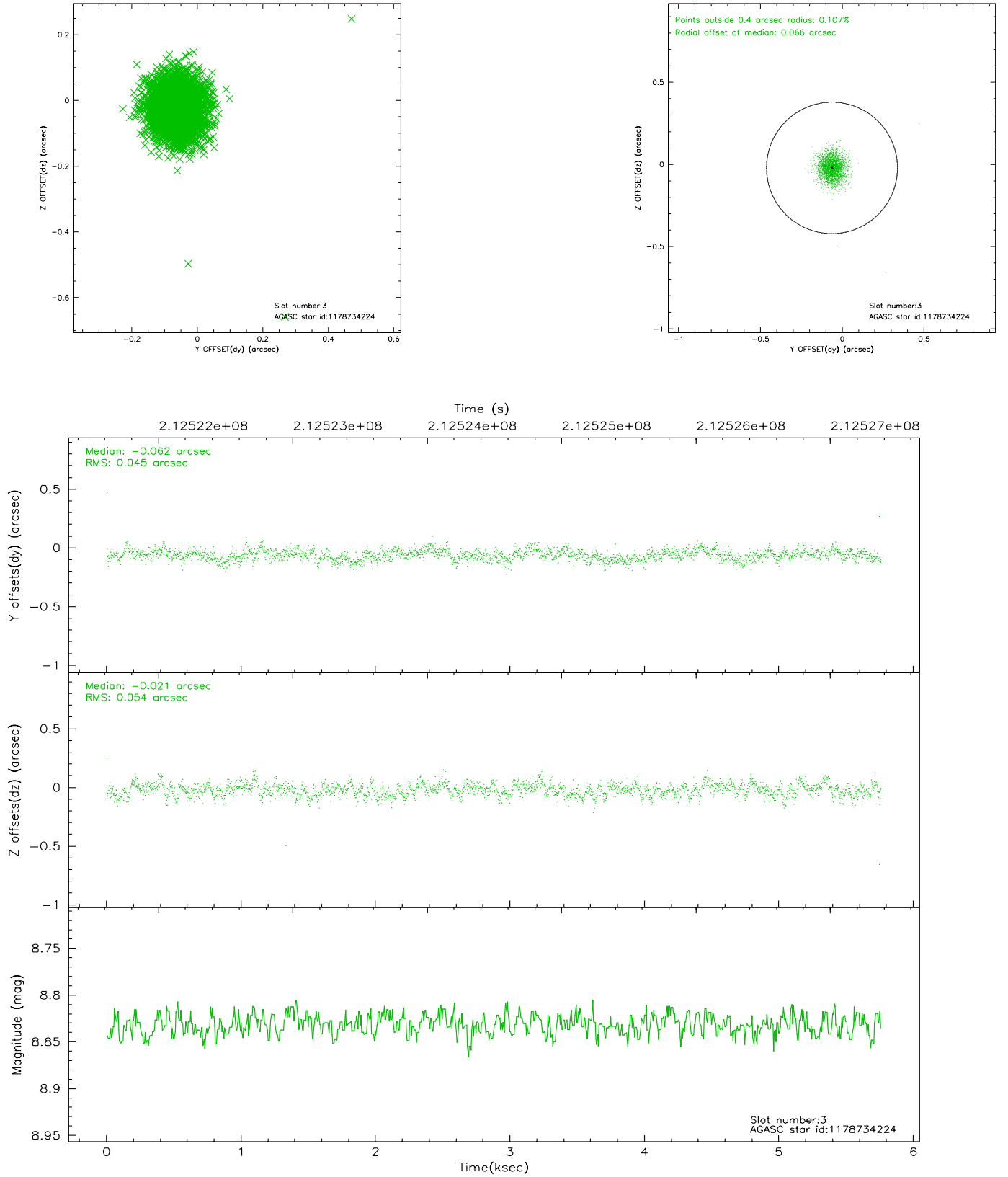


Slot Statistics

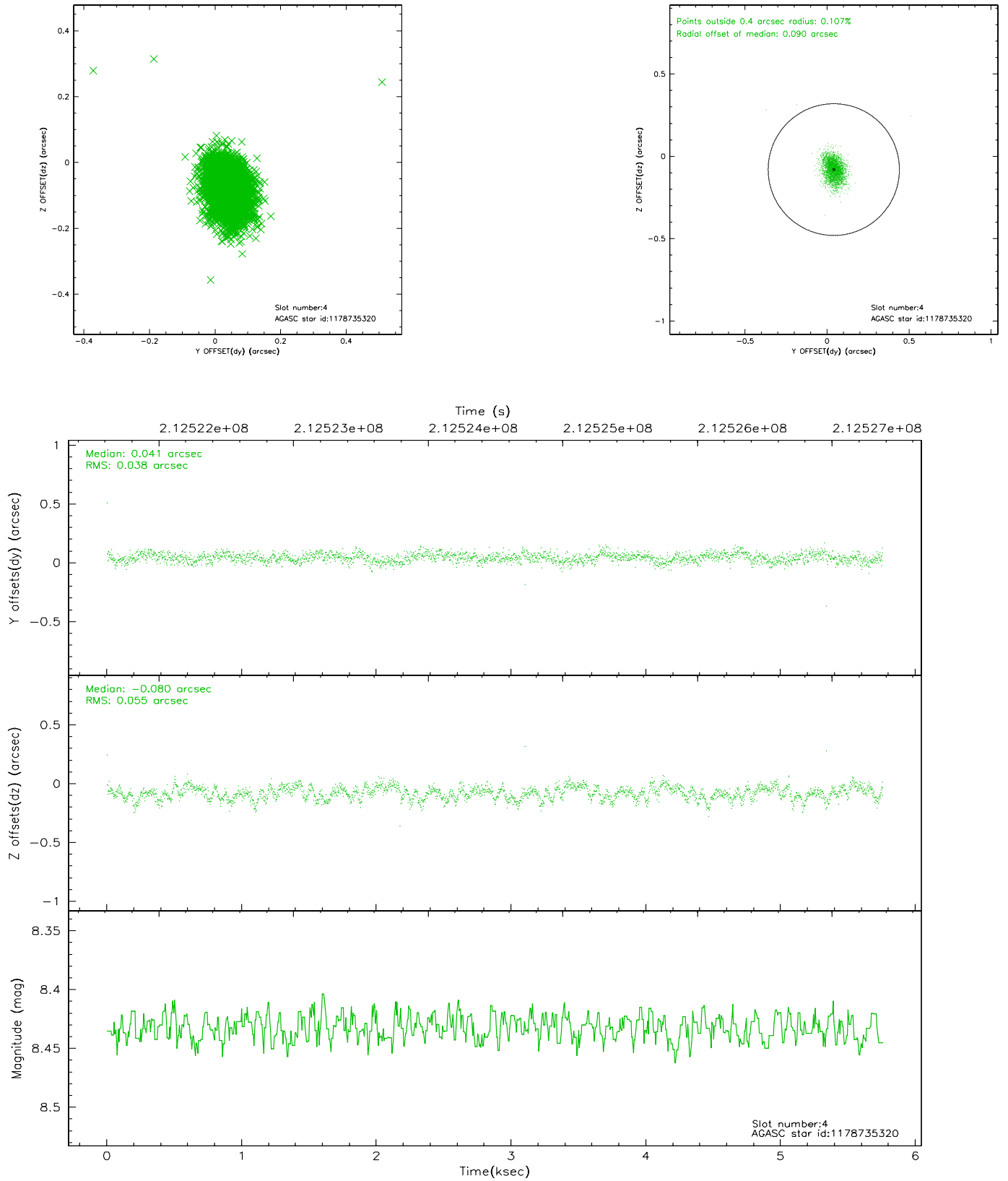
slot	status	id	mag	n_pts	med_dy	med_dz	dr1	dr2	ra	dec	mean_y	mean_z
0	FID	ACIS-I-1	7.23	1404	-0.030	-0.011	0.011	0.021	0.000000	0.000000	931.61	-834.58
1	FID	ACIS-I-4	7.18	1404	0.105	0.046	0.008	0.014	0.000000	0.000000	2152.39	1064.75
2	FID	ACIS-I-5	7.22	1404	-0.174	0.036	0.008	0.014	0.000000	0.000000	-1815.17	1063.83
3	GUIDE	1178734224	8.83	2808	-0.062	-0.021	0.073	0.119	195.220973	-62.585409	294.19	-2223.84
4	GUIDE	1178735320	8.43	2806	0.041	-0.080	0.068	0.112	195.346776	-62.925070	395.07	-988.53
5	GUIDE	1178736896	8.37	2807	0.052	0.089	0.054	0.089	194.755483	-63.640622	1949.48	1278.21
6	GUIDE	1178741464	8.67	2809	0.015	0.026	0.071	0.111	196.205525	-63.491457	-434.32	1338.84
7	GUIDE	1178878144	9.22	2804	-0.042	-0.013	0.075	0.122	197.169234	-63.211551	-2204.08	784.55

2.4 Star Slots

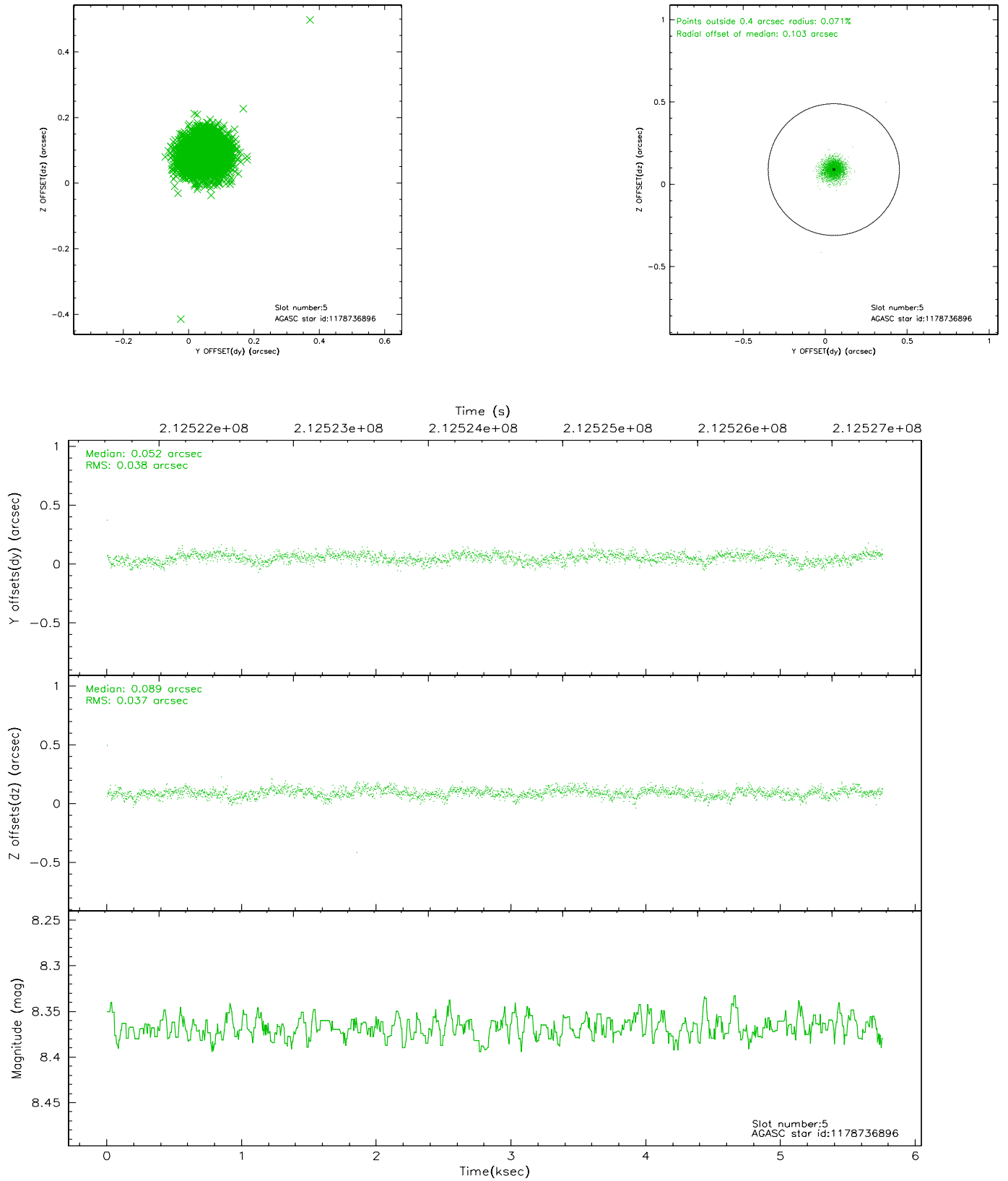
2.4.1 Slot 3



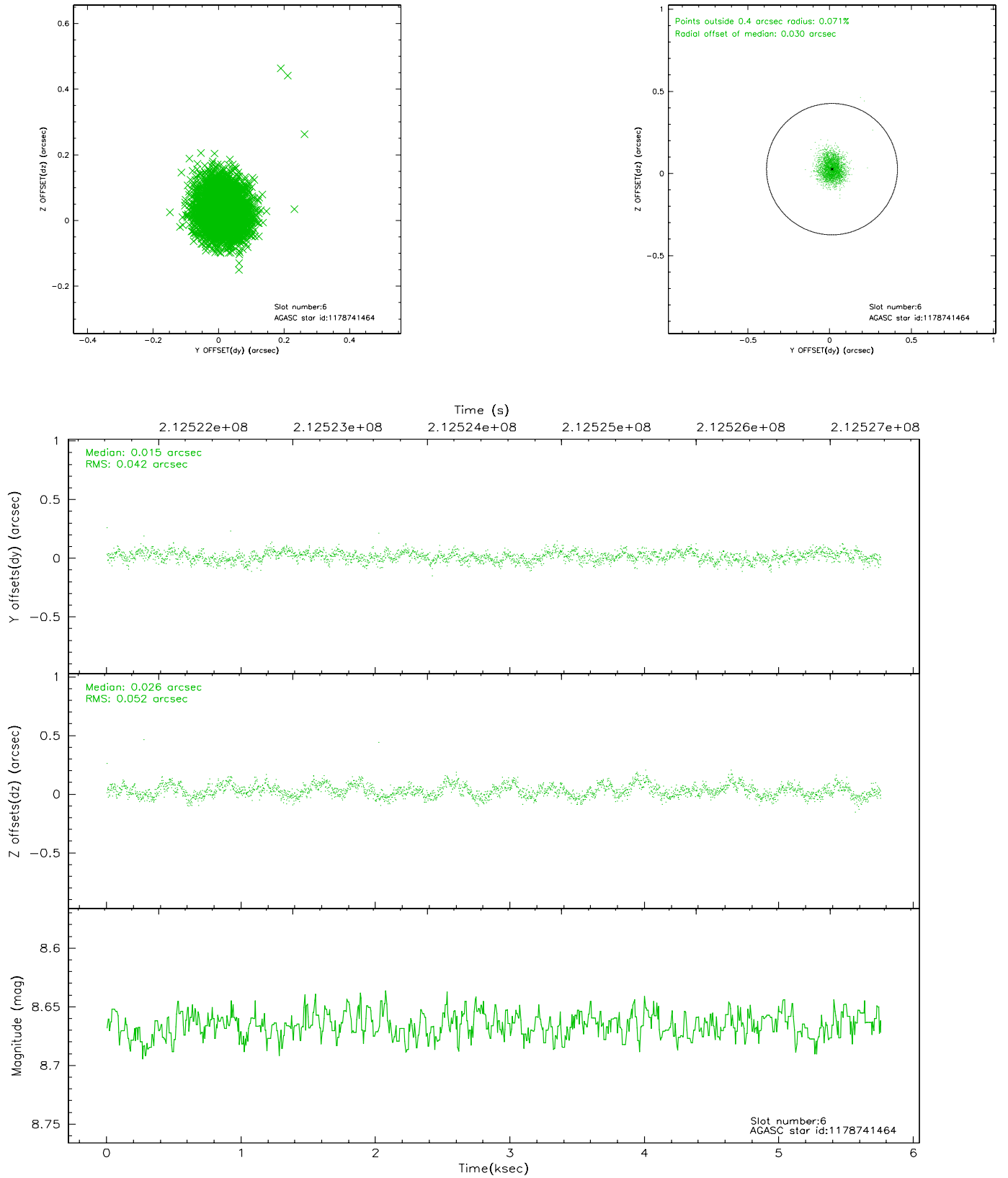
2.4.2 Slot 4



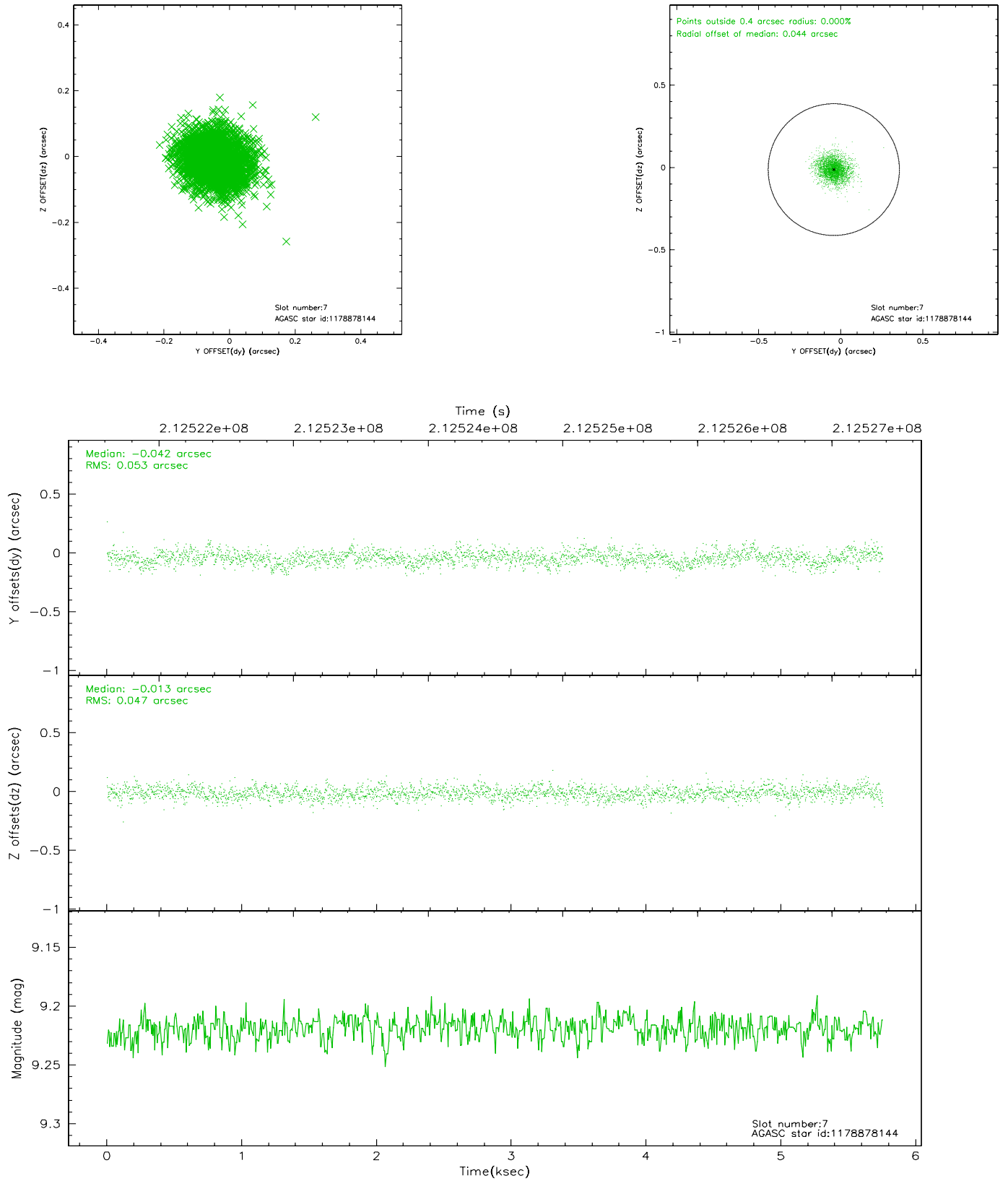
2.4.3 Slot 5



2.4.4 Slot 6

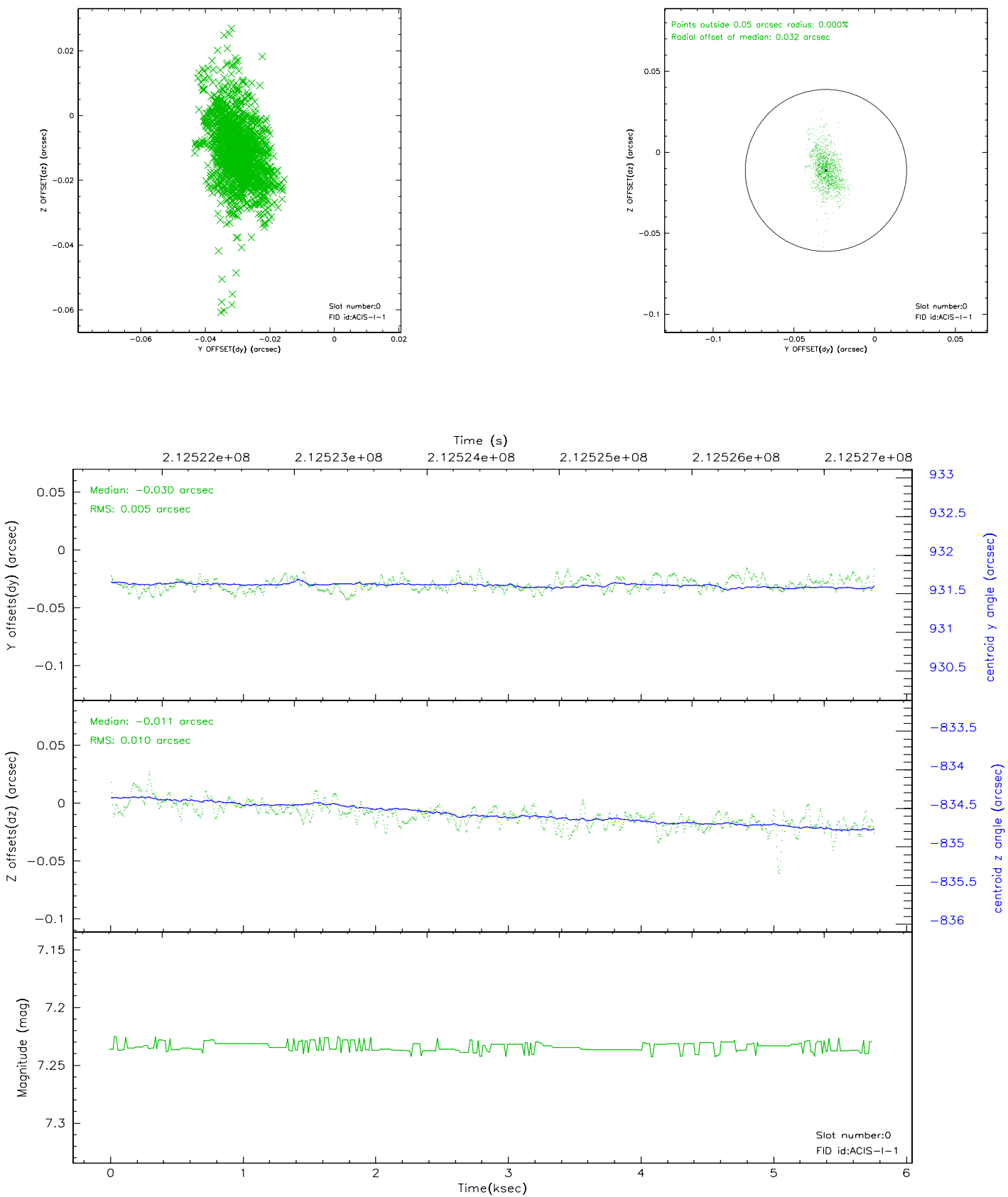


2.4.5 Slot 7

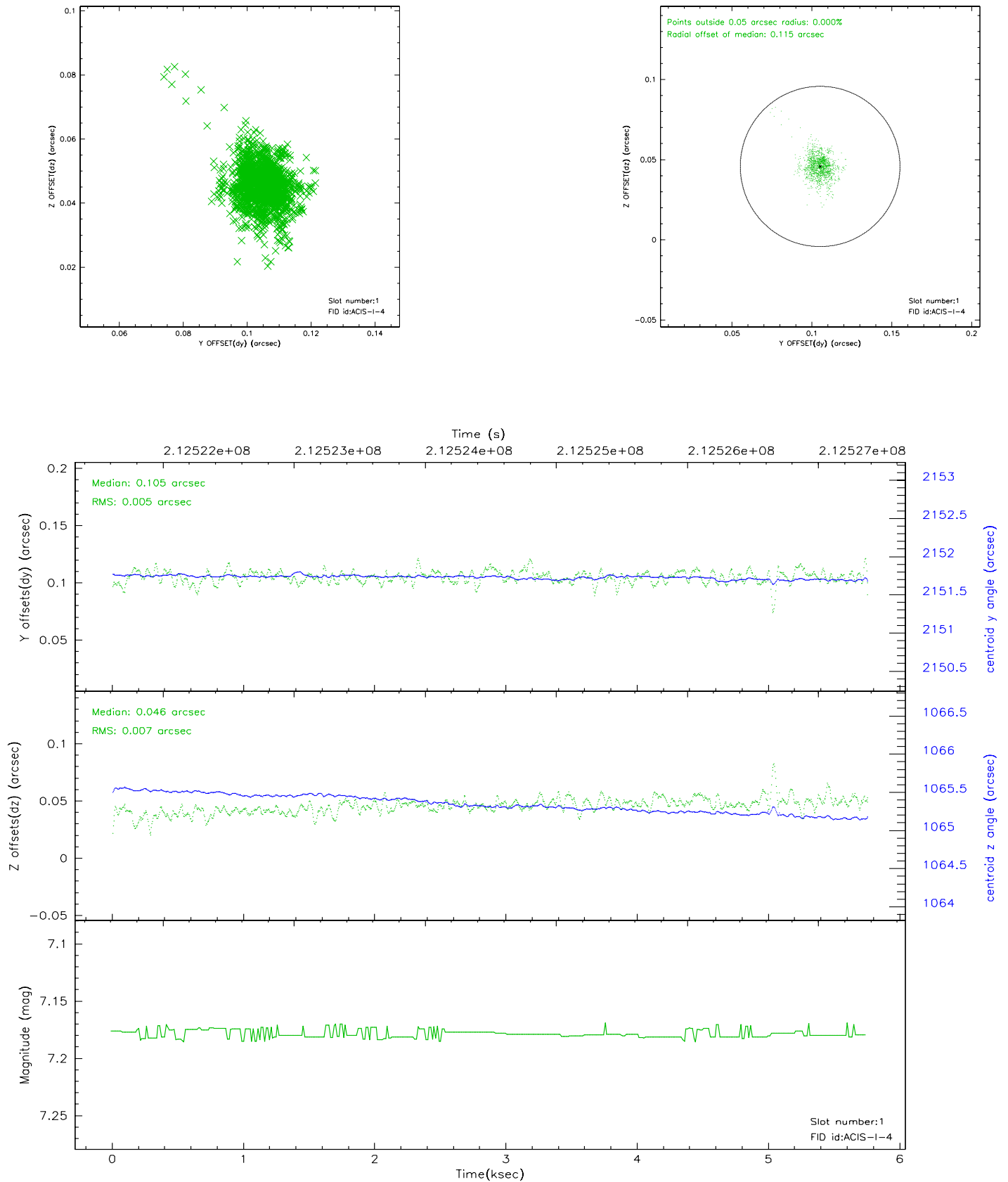


2.5 FID Slots

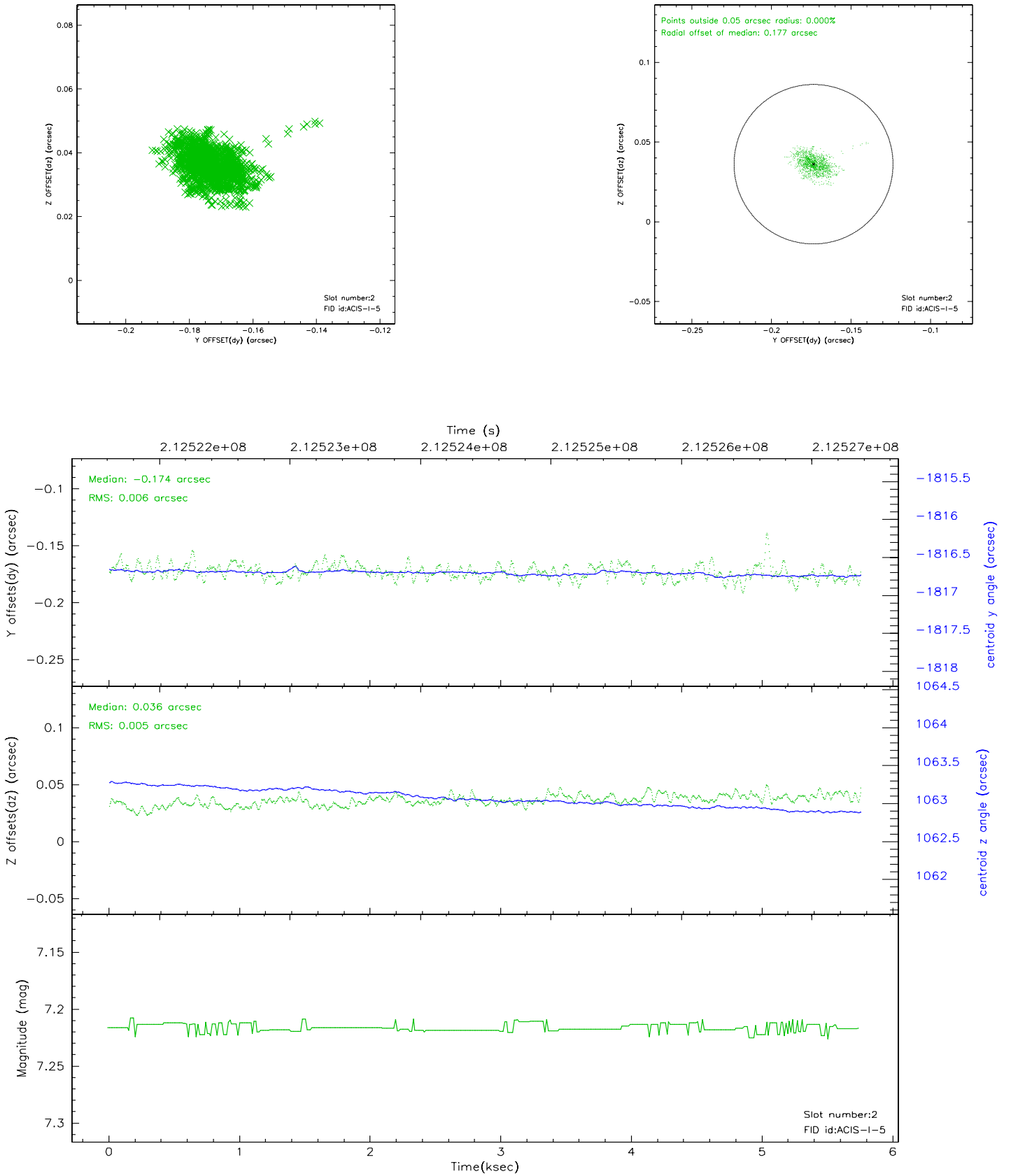
2.5.1 Slot 0



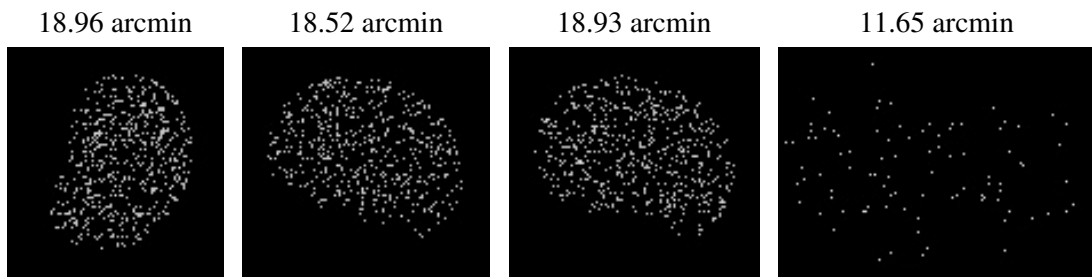
2.5.2 Slot 1



2.5.3 Slot 2



3 Point Sources



A Summary

A.1 Status

V&V Scientist	Beth Sundheim
V&V Date (YYYY-MM-DD)	2006.04.16
V&V Edition	1
V&V Disposition and Status	OK
V&V Charge Time	4.707

A.2 Comments