

V&V Reference Report

L2 ASCDS Version : 7.6.8

Observation 60568 - L2 Version 001
Chandra X-Ray Center

L2 Processing Date : Jul 8 2006

Contents

1	Front	2
2	OBI	3
2.1	OBI	3
2.1.1	Images	3
2.1.2	Bias	3
2.1.3	Parameters	4
2.1.4	Events	4
2.2	Compared Parameters	5
2.3	Aspect	6
2.4	Star Slots	8
2.5	FID Slots	8
A	Summary	9
A.1	Status	9
A.2	Comments	9

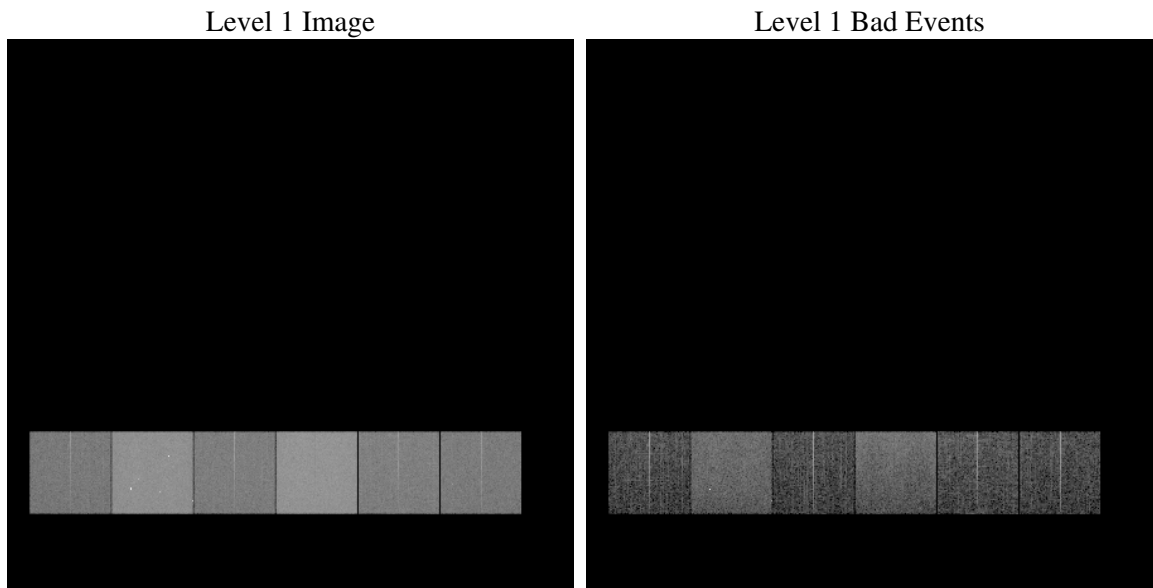
1 Front

seq_num	
obs_id	60568
title	ACIS-456789 diagnostics
observer	CHANDRA engineering request/realtime commanding
object	
dtcycle	0
cycle	P
ra_targ	0.0
dec_targ	0.0
ra_nom	115.99817969099
dec_nom	47.028575486572
roll_nom	59.595222450982
revision	2
ontime	8441.5999685526
livetime	8334.7073468295
ontime4	4186.2089300156
ontime5	8441.5999685526
ontime6	4562.1634411216
ontime7	8441.5999685526
ontime8	4662.2671173811
ontime9	4374.1862900853
l2events	1219686

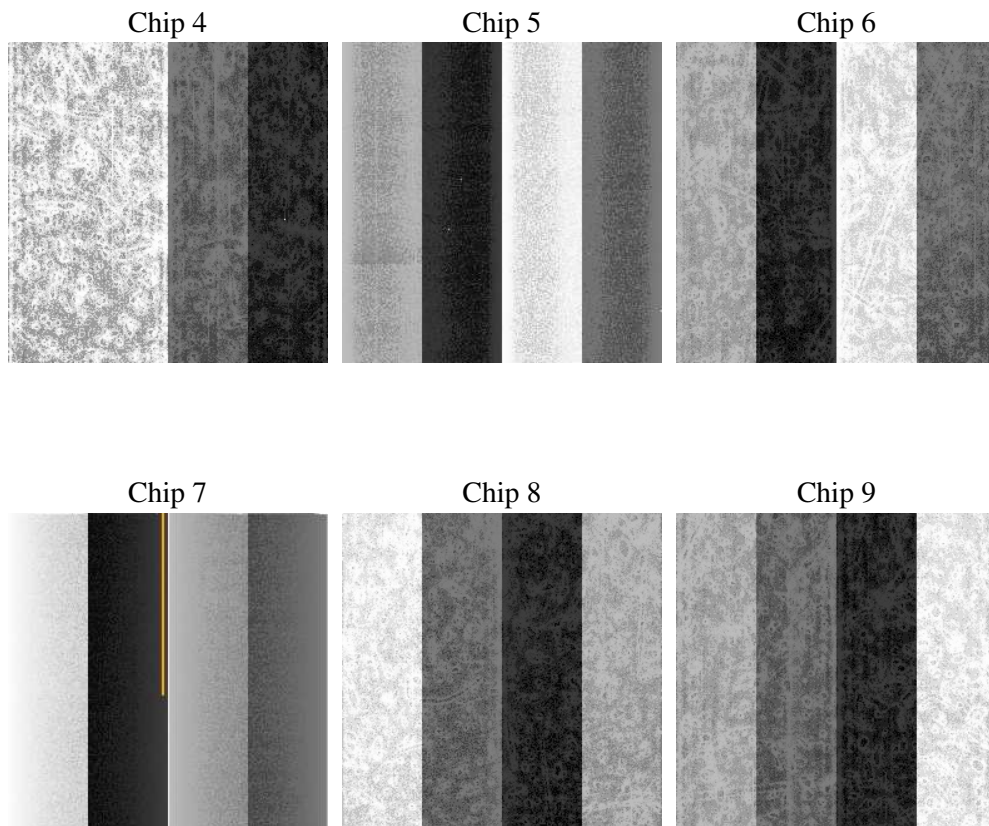
2 OBI

2.1 OBI

2.1.1 Images



2.1.2 Bias



2.1.3 Parameters

obi_num	0
ascdsver	7.6.8
caldbver	3.2.2
date	2006-07-08T04:25:30
revision	2

sched_exp_time	0.0
ontime	8459.0041321218
ontime4	4197.1311929524
ontime5	8459.0041321218
ontime6	4569.844664067
ontime7	8459.0041321218
ontime8	4673.5562792122
ontime9	4385.1085530221
l1events	1536717

2.1.4 Events

	ccd 4	ccd 5	ccd 6	ccd 7	ccd 8	ccd 9
level 1 events	183984	349033	209508	378751	220178	195263
rejected events	31585	64436	31516	59584	35667	30624
rejected %	17%	18%	15%	15%	16%	15%

	ccd 4	ccd 5	ccd 6	ccd 7	ccd 8	ccd 9
grade 0 events	88646	33304	97223	55792	101022	90964
	48%	9%	46%	14%	45%	46%
grade 1 events	640	195	457	144	530	511
	0%	0%	0%	0%	0%	0%
grade 2 events	24426	136134	30906	97796	32118	28542
	13%	39%	14%	25%	14%	14%
grade 3 events	9972	8746	10974	22854	12026	10412
	5%	2%	5%	6%	5%	5%
grade 4 events	10052	8772	10828	22269	11900	10265
	5%	2%	5%	5%	5%	5%
grade 5 events	1982	6605	2198	7370	2482	2172
	1%	1%	1%	1%	1%	1%
grade 6 events	19650	98302	28471	121170	27834	24942
	10%	28%	13%	31%	12%	12%
grade 7 events	28616	56975	28451	51356	32266	27455
	15%	16%	13%	13%	14%	14%

2.2 Compared Parameters

Parameter	Planned	Actual	Parameter	Planned	Actual
Instrument	ACIS	ACIS	Obspar format version number	6	6
Detector	ACIS-456789	ACIS-456789	Obspar file type	PREDICTED	ACTUAL
Grating	NONE	NONE	Obspar update status	NONE	UPDATED
Data mode	FAINT	FAINT	On-chip summing requested	N	N
Observation mode	SECONDARY	SECONDARY	Subarray requested	NONE	NONE
Pointing RA	0	115.9981796909927	Alternating exposures requested	N	N
Pointing Dec	0	47.02857548657214	Primary exposure time	0.000000	3.2
Pointing Roll	0.0	59.5952224509823			
SIM focus pos (mm)	-0.684267	-0.6828225247311905			
SIM defocus (mm)	0	0.8505141146731063			
SIM translation stage pos (mm)	-190.132523	250.4635187648994			
SIM translation stage offset (mm)	0	-0.007540371344731511			
Observation start time	178915437.186785	178915436.16208			
Observation start date	2003-09-02T18:43:57	2003-09-02T18:43:56			
Observation end time	178937899.037745	178937898.01304			
Observation end date	2003-09-03T00:58:19	2003-09-03T00:58:18			
Read mode	TIMED	TIMED			

2.3 Aspect

2.4 Star Slots

2.5 FID Slots

A Summary

A.1 Status

V&V Scientist	Jen Lauer
V&V Date (YYYY-MM-DD)	2006.07.10
V&V Edition	1
V&V Disposition and Status	OK
V&V Charge Time	8.44159996

A.2 Comments