

# V&V Reference Report

## L2 ASCDS Version : 8.4.5

Observation 60528 - L2 Version 3  
Chandra X-Ray Center

L2 Processing Date : Nov 5 2012

## Contents

<b>1</b>	<b>Front</b>	<b>2</b>
<b>2</b>	<b>OBI</b>	<b>3</b>
2.1	OBI . . . . .	3
2.1.1	Images . . . . .	3
2.1.2	Bias . . . . .	3
2.1.3	Parameters . . . . .	4
2.1.4	Events . . . . .	4
2.2	Compared Parameters . . . . .	5
2.3	Star Slots . . . . .	6
2.4	FID Slots . . . . .	6
<b>A</b>	<b>Summary</b>	<b>7</b>
A.1	Status . . . . .	7
A.2	Comments . . . . .	7

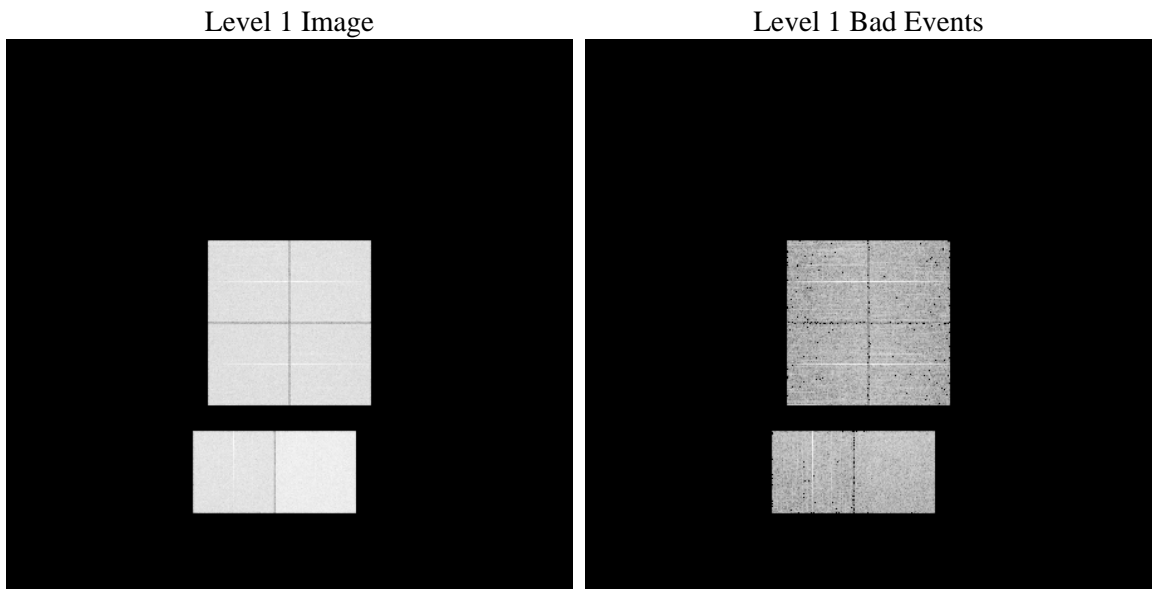
# 1 Front

seq_num	&#160	Sequence number
obs_id	60528	Observation id
title	ACIS-012367 diagnostics	Proposal title
observer	CHANDRA engineering request/realtime commanding	Principal investig
object	&#160	Source name
dtcycle	0	&#160
cycle	P	events from which exps? Prim/Second/Both
ra_targ	0.0	Observer's specified target RA [deg]
dec_targ	0.0	Observer's specified target Dec [deg]
ra_nom	135.98434219502	Nominal RA [deg]
dec_nom	-10.975867911772	Nominal Dec [deg]
roll_nom	89.684152878516	Nominal Roll [deg]
revision	3	Processing version of data
ontime	7804.7999709249	Sum of GTIs [s]
livetime	7705.9708942067	Livetime [s]
ontime0	4994.8846093118	Sum of GTIs [s]
ontime1	5179.6205414534	Sum of GTIs [s]
ontime2	4842.5585300028	Sum of GTIs [s]
ontime3	4939.7880465984	Sum of GTIs [s]
ontime6	5448.6201447248	Sum of GTIs [s]
ontime7	7804.7999709249	Sum of GTIs [s]
l2events	1158440	Number of level 2 events

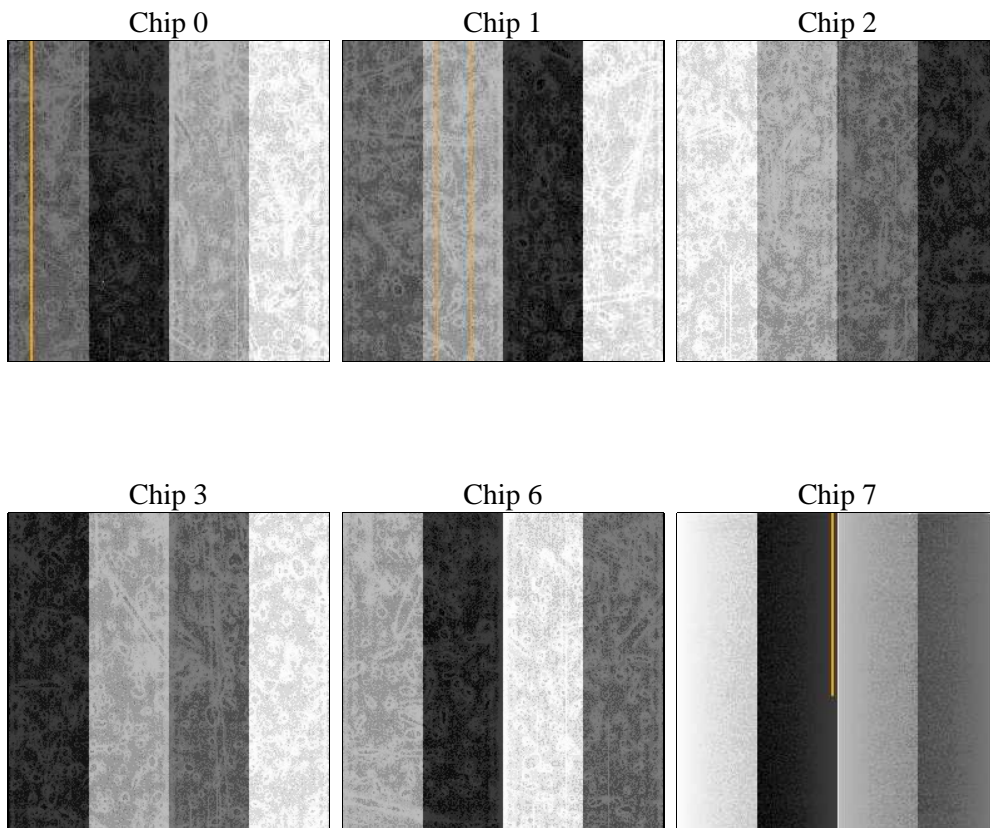
## 2 OBI

### 2.1 OBI

#### 2.1.1 Images



#### 2.1.2 Bias



### 2.1.3 Parameters

obi_num	0	Obi number	sched_exp_time	0.0	[s] Scheduled observation exposure time
ascdsver	8.4.5	Processing system revision	ontime	7804.7999709249	Sum of GTIs [s]
caldbver	4.5.2	&#160	ontime0	4994.8846093118	Sum of GTIs [s]
date	2012-11-05T08:26:28	Date and time of file creation	ontime1	5179.6205414534	Sum of GTIs [s]
revision	3	Processing version of data	ontime2	4842.5585300028	Sum of GTIs [s]
			ontime3	4939.7880465984	Sum of GTIs [s]
			ontime6	5448.6201447248	Sum of GTIs [s]
			ontime7	7804.7999709249	Sum of GTIs [s]
			l1events	1419824	Number of level 1 events

### 2.1.4 Events

	ccd 0	ccd 1	ccd 2	ccd 3	ccd 6	ccd 7		ccd 0	ccd 1	ccd 2	ccd 3	ccd 6	ccd 7
level 1 events	209993	216914	206335	210726	239465	336391	grade 0 events	98301	101530	98485	100005	111265	73115
rejected events	32653	32241	31717	33155	35705	41058		46%	46%	47%	47%	46%	21%
rejected %	15%	14%	15%	15%	14%	12%	grade 1 events	509	476	553	568	536	212
								0%	0%	0%	0%	0%	0%
							grade 2 events	30944	32617	29224	30387	35138	65489
								14%	15%	14%	14%	14%	19%
							grade 3 events	11426	11955	11376	11550	12793	29924
								5%	5%	5%	5%	5%	8%
							grade 4 events	11436	11746	11454	11523	12597	29837
								5%	5%	5%	5%	5%	8%
							grade 5 events	2175	2283	1951	2204	2543	7603
								1%	1%	0%	1%	1%	2%
							grade 6 events	25345	26913	24170	24220	32084	97084
								12%	12%	11%	11%	13%	28%
							grade 7 events	29857	29394	29122	30269	32509	33127
								14%	13%	14%	14%	13%	9%

## 2.2 Compared Parameters

Parameter	Planned	Actual
Instrument	ACIS	ACIS
Detector	ACIS-012367	ACIS-012367
Grating	NONE	NONE
Data mode	FAINT	FAINT
Observation mode	SECONDARY	SECONDARY
[deg] Pointing RA	0	135.984342195022
[deg] Pointing Dec	0	-10.97586791177172
[deg] Pointing Roll	0.0	89.68415287851614
[mm] SIM focus pos	-0.782348	-0.6828225247311905
[mm] SIM defocus	0	0.8505141146731063
[mm] SIM translation stage pos	-233.592463	250.466033080201
[mm] SIM translation stage offset	0	-0.01005468664627074
[s] Observation start time (MET)	182078622.172481	182078621.14778
Observation start date	2003-10-09T09:23:42	2003-10-09T09:23:41
[s] Observation end time (MET)	182093091.073102	182093090.0484
Observation end date	2003-10-09T13:24:51	2003-10-09T13:24:50
Read mode	TIMED	TIMED

Parameter	Planned	Actual
Obspar format version number	7	7
Obspar file type	PREDICTED	ACTUAL
Obspar update status	NONE	UPDATED
On-chip summing requested	N	N
Subarray requested	NONE	NONE
Alternating exposures requested	N	N
[s] Primary exposure time	0.000000	3.2

## **2.3 Star Slots**

## **2.4 FID Slots**

## A Summary

### A.1 Status

V&V Scientist	Beth Sundheim
V&V Date (YYYY-MM-DD)	2012.12.07
V&V Edition	1
V&V Disposition and Status	OK
V&V Charge Time	7.8047999709249

### A.2 Comments