

V&V Reference Report

L2 ASCDS Version : 7.6.8

Observation 60528 - L2 Version 001
Chandra X-Ray Center

L2 Processing Date : Jul 2 2006

Contents

1	Front	2
2	OBI	3
2.1	OBI	3
2.1.1	Images	3
2.1.2	Bias	3
2.1.3	Parameters	4
2.1.4	Events	4
2.2	Compared Parameters	5
2.3	Aspect	6
2.4	Star Slots	8
2.5	FID Slots	8
A	Summary	9
A.1	Status	9
A.2	Comments	9

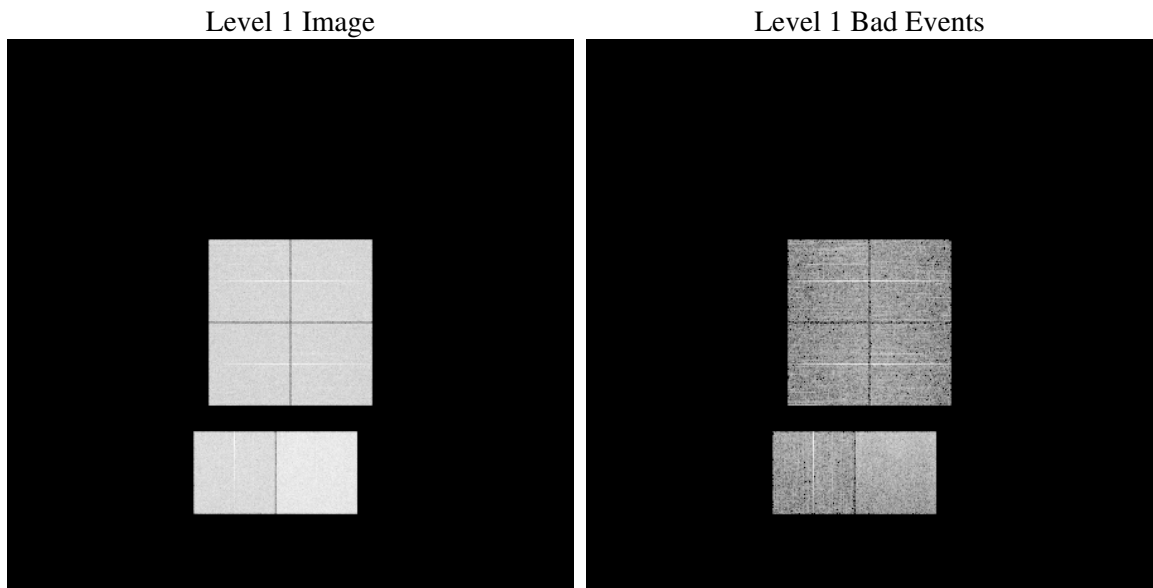
1 Front

seq_num	
obs_id	60528
title	ACIS-012367 diagnostics
observer	CHANDRA engineering request/realtime commanding
object	
dtcycle	0
cycle	P
ra_targ	0.0
dec_targ	0.0
ra_nom	135.98434200705
dec_nom	-10.97589569523
roll_nom	89.684152835544
revision	2
ontime	7804.7999709249
livetime	7705.9708942067
ontime0	4994.8846093118
ontime1	5179.6205414534
ontime2	4842.5585300028
ontime3	4939.7880465984
ontime6	5448.6201447248
ontime7	7804.7999709249
l2events	1148059

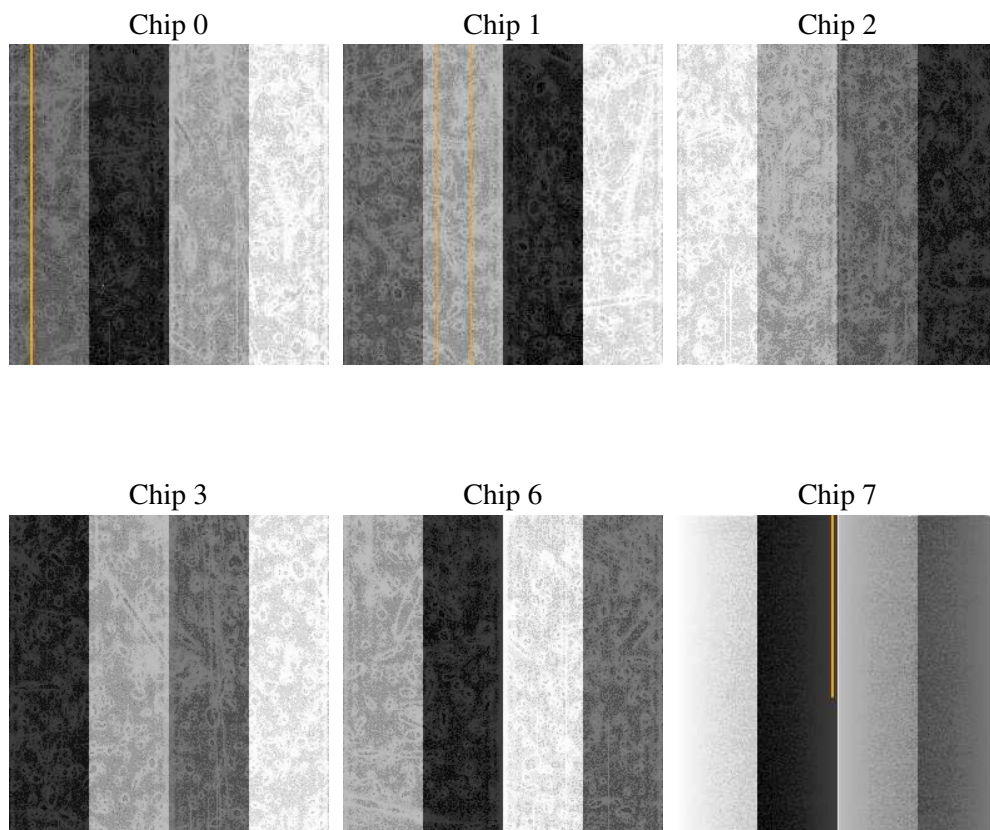
2 OBI

2.1 OBI

2.1.1 Images



2.1.2 Bias



2.1.3 Parameters

obi_num	0
ascdsver	7.6.8
caldbver	3.2.2
date	2006-07-02T03:15:35
revision	2

sched_exp_time	0.0
ontime	7807.5662055314
ontime0	4997.6508439183
ontime1	5182.3867760599
ontime2	4845.3247646093
ontime3	4942.5542812049
ontime6	5451.3863793314
ontime7	7807.5662055314
l1events	1419824

2.1.4 Events

	ccd 0	ccd 1	ccd 2	ccd 3	ccd 6	ccd 7
level 1 events	209993	216914	206335	210726	239465	336391
rejected events	32660	32266	31725	33157	35699	51555
rejected %	15%	14%	15%	15%	14%	15%

	ccd 0	ccd 1	ccd 2	ccd 3	ccd 6	ccd 7
grade 0 events	98304	101533	98488	100006	111273	51187
	46%	46%	47%	47%	46%	15%
grade 1 events	509	476	554	570	536	122
	0%	0%	0%	0%	0%	0%
grade 2 events	30941	32614	29221	30386	35130	85781
	14%	15%	14%	14%	14%	25%
grade 3 events	11427	11956	11376	11553	12794	21301
	5%	5%	5%	5%	5%	6%
grade 4 events	11439	11747	11457	11527	12597	21106
	5%	5%	5%	5%	5%	6%
grade 5 events	2175	2282	1951	2205	2544	6480
	1%	1%	0%	1%	1%	1%
grade 6 events	25341	26912	24169	24212	32083	105569
	12%	12%	11%	11%	13%	31%
grade 7 events	29857	29394	29119	30267	32508	44845
	14%	13%	14%	14%	13%	13%

2.2 Compared Parameters

Parameter	Planned	Actual	Parameter	Planned	Actual
Instrument	ACIS	ACIS	Obspar format version number	6	6
Detector	ACIS-012367	ACIS-012367	Obspar file type	PREDICTED	ACTUAL
Grating	NONE	NONE	Obspar update status	NONE	UPDATED
Data mode	FAINT	FAINT	On-chip summing requested	N	N
Observation mode	SECONDARY	SECONDARY	Subarray requested	NONE	NONE
Pointing RA	0	135.9843420070522	Alternating exposures requested	N	N
Pointing Dec	0	-10.9758956952298	Primary exposure time	0.000000	3.2
Pointing Roll	0.0	89.6841528355439			
SIM focus pos (mm)	-0.782348	-0.6828225247311905			
SIM defocus (mm)	0	0.8505141146731063			
SIM translation stage pos (mm)	-233.592463	250.466033080201			
SIM translation stage offset (mm)	0	-0.01005468664627074			
Observation start time	182078622.172481	182078621.14778			
Observation start date	2003-10-09T09:23:42	2003-10-09T09:23:41			
Observation end time	182093091.073102	182093090.0484			
Observation end date	2003-10-09T13:24:51	2003-10-09T13:24:50			
Read mode	TIMED	TIMED			

2.3 Aspect

2.4 Star Slots

2.5 FID Slots

A Summary

A.1 Status

V&V Scientist	Doug Morgan
V&V Date (YYYY-MM-DD)	2006.07.02
V&V Edition	1
V&V Disposition and Status	OK
V&V Charge Time	7.80479997

A.2 Comments