

# V&V Reference Report

## L2 ASCDS Version : 7.6.7.2

Observation 60408 - L2 Version 001  
Chandra X-Ray Center

L2 Processing Date : Jun 7 2006

## Contents

<b>1</b>	<b>Front</b>	<b>2</b>
<b>2</b>	<b>OBI</b>	<b>3</b>
2.1	OBI . . . . .	3
2.1.1	Images . . . . .	3
2.1.2	Bias . . . . .	3
2.1.3	Parameters . . . . .	4
2.1.4	Events . . . . .	4
2.2	Compared Parameters . . . . .	5
2.3	Aspect . . . . .	6
2.4	Star Slots . . . . .	8
2.5	FID Slots . . . . .	8
<b>A</b>	<b>Summary</b>	<b>9</b>
A.1	Status . . . . .	9
A.2	Comments . . . . .	9

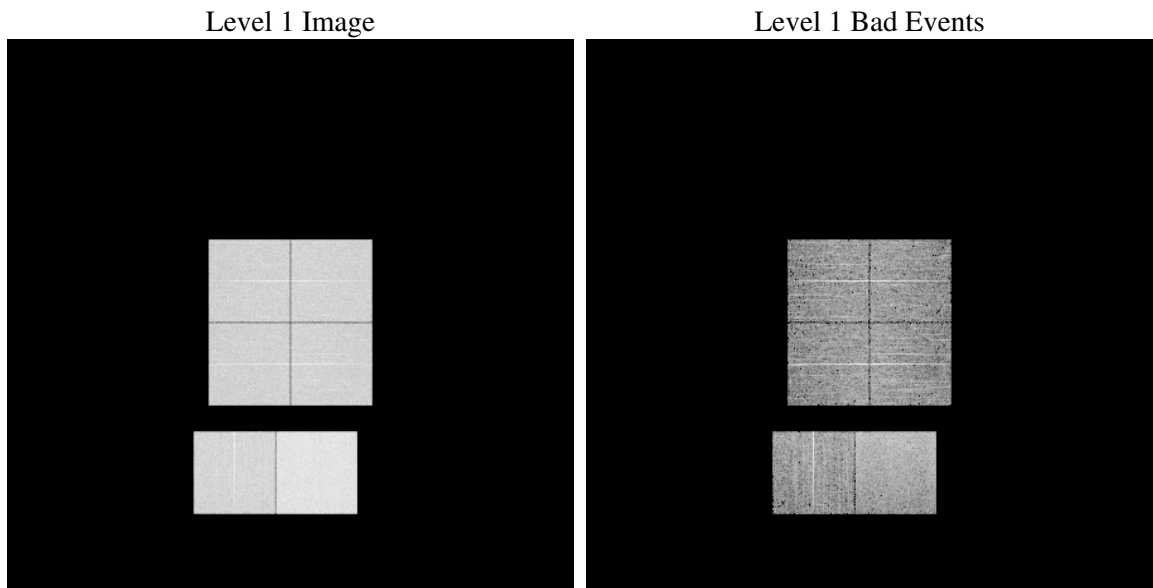
# 1 Front

seq_num	&#160
obs_id	60408
title	ACIS-012367 diagnostics
observer	CHANDRA engineering request/realtime commanding
object	&#160
dtcycle	0
cycle	P
ra_targ	0.0
dec_targ	0.0
ra_nom	70.023447467677
dec_nom	6.9833684811976
roll_nom	291.47946966381
revision	2
ontime	7806.6416610777
livetime	7707.7892637699
ontime0	5191.208692044
ontime1	5324.1299526393
ontime2	5110.2661731839
ontime3	5184.6441630125
ontime6	5499.2249985933
ontime7	7806.6416610777
l2events	1136634

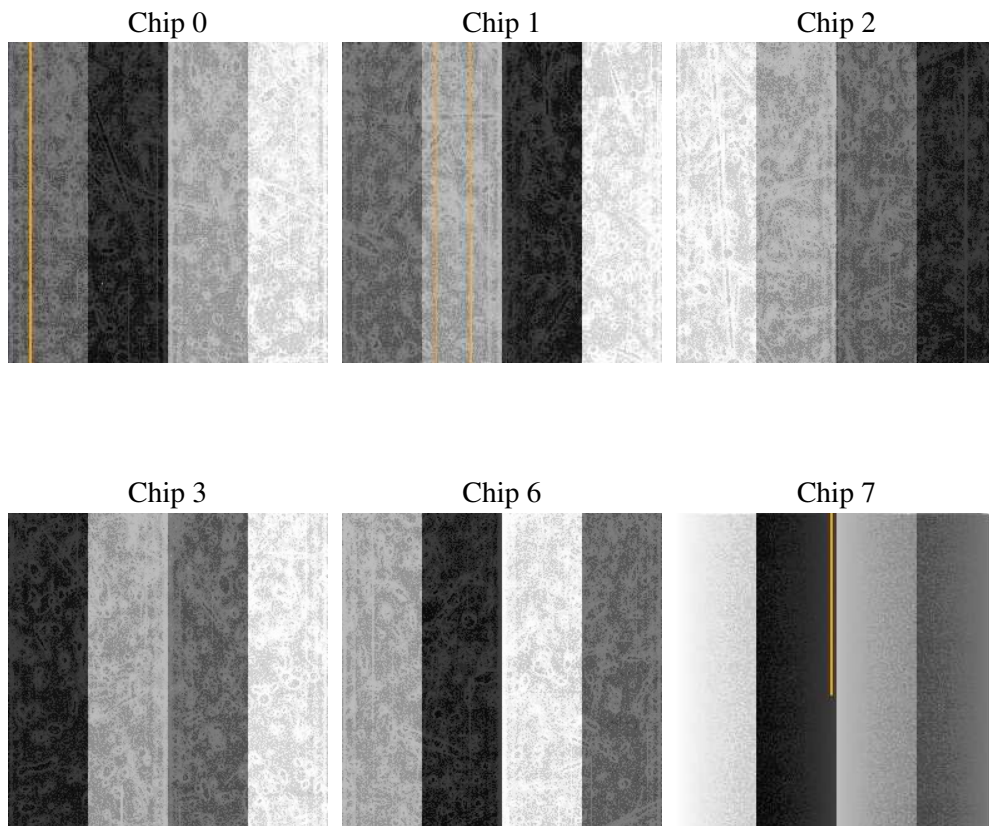
## 2 OBI

### 2.1 OBI

#### 2.1.1 Images



#### 2.1.2 Bias



### 2.1.3 Parameters

obi_num	1
ascdsver	7.6.7.2
caldsver	3.2.2
date	2006-06-07T08:39:23
revision	2

sched_exp_time	0.0
ontime	7807.5935302675
ontime0	5192.1195212305
ontime1	5324.9997418225
ontime2	5111.0949223638
ontime3	5185.6370722055
ontime6	5500.0127077997
ontime7	7807.5935302675
l1events	1419599

### 2.1.4 Events

	ccd 0	ccd 1	ccd 2	ccd 3	ccd 6	ccd 7
level 1 events	211811	217213	210551	215120	235281	329623
rejected events	34223	33668	33875	35558	37821	52804
rejected %	16%	15%	16%	16%	16%	16%

	ccd 0	ccd 1	ccd 2	ccd 3	ccd 6	ccd 7
grade 0 events	97812	100201	99128	100750	106643	48405
	46%	46%	47%	46%	45%	14%
grade 1 events	592	482	564	536	498	115
	0%	0%	0%	0%	0%	0%
grade 2 events	31147	32984	29373	30357	34110	84959
	14%	15%	13%	14%	14%	25%
grade 3 events	11218	11724	11430	11611	12360	19804
	5%	5%	5%	5%	5%	6%
grade 4 events	11158	11408	11493	11647	12048	19597
	5%	5%	5%	5%	5%	5%
grade 5 events	2154	2352	2178	2425	2591	6434
	1%	1%	1%	1%	1%	1%
grade 6 events	26253	27228	25252	25197	32299	104054
	12%	12%	11%	11%	13%	31%
grade 7 events	31477	30834	31133	32597	34732	46255
	14%	14%	14%	15%	14%	14%

## 2.2 Compared Parameters

Parameter	Planned	Actual	Parameter	Planned	Actual
Instrument	ACIS	ACIS	Obspar format version number	6	6
Detector	ACIS-012367	ACIS-012367	Obspar file type	PREDICTED	ACTUAL
Grating	NONE	NONE	Obspar update status	NONE	UPDATED
Data mode	FAINT	FAINT	On-chip summing requested	N	N
Observation mode	SECONDARY	SECONDARY	Subarray requested	NONE	NONE
Pointing RA	0	70.02344746767653	Alternating exposures requested	N	N
Pointing Dec	0	6.983368481197639	Primary exposure time	0.000000	3.2
Pointing Roll	0.0	291.4794696638129			
SIM focus pos (mm)	-0.782348	-0.7809083437167272			
SIM defocus (mm)	0	0.7524282956875696			
SIM translation stage pos (mm)	-233.592463	250.466033080201			
SIM translation stage offset (mm)	0	-0.01005468664627074			
Observation start time	190760591.898666	190760590.87395			
Observation start date	2004-01-17T21:03:12	2004-01-17T21:03:10			
Observation end time	190775509.749317	190775508.7246			
Observation end date	2004-01-18T01:11:50	2004-01-18T01:11:48			
Read mode	TIMED	TIMED			

## 2.3 Aspect



## **2.4 Star Slots**

## **2.5 FID Slots**



# A Summary

## A.1 Status

V&V Scientist	Jen Lauer
V&V Date (YYYY-MM-DD)	2006.06.07
V&V Edition	1
V&V Disposition and Status	OK
V&V Charge Time	7.80664166

## A.2 Comments

The ACIS focal plane increases by a degree during the observation, and is above calibration limits for the last 3 ksec of the obsid.