

# V&V Reference Report

## L2 ASCDS Version : 7.6.7.2

Observation 60348 - L2 Version 001  
Chandra X-Ray Center

L2 Processing Date : May 31 2006

## Contents

<b>1</b>	<b>Front</b>	<b>2</b>
<b>2</b>	<b>OBI</b>	<b>3</b>
2.1	OBI . . . . .	3
2.1.1	Images . . . . .	3
2.1.2	Bias . . . . .	3
2.1.3	Parameters . . . . .	4
2.1.4	Events . . . . .	4
2.2	Compared Parameters . . . . .	5
2.3	Aspect . . . . .	6
2.4	Star Slots . . . . .	8
2.5	FID Slots . . . . .	8
<b>A</b>	<b>Summary</b>	<b>9</b>
A.1	Status . . . . .	9
A.2	Comments . . . . .	9

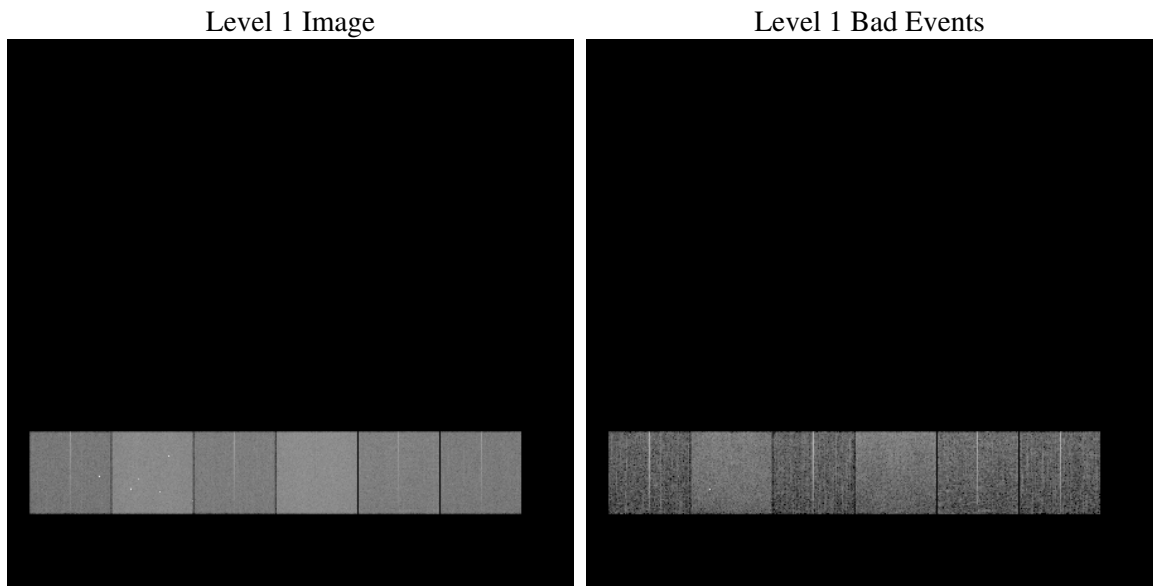
# 1 Front

seq_num	&#160
obs_id	60348
title	ACIS-456789 diagnostics
observer	CHANDRA engineering request/realtime commanding
object	&#160
dtcycle	0
cycle	P
ra_targ	0.0
dec_targ	0.0
ra_nom	164.93459274902
dec_nom	68.983653992125
roll_nom	182.04831509687
revision	2
ontime	8438.3999685645
livetime	8331.5478671681
ontime4	5051.5812643766
ontime5	8438.3999685645
ontime6	5573.3797698617
ontime7	8438.3999685645
ontime8	5719.2237811387
ontime9	5294.6544737816
l2events	1181163

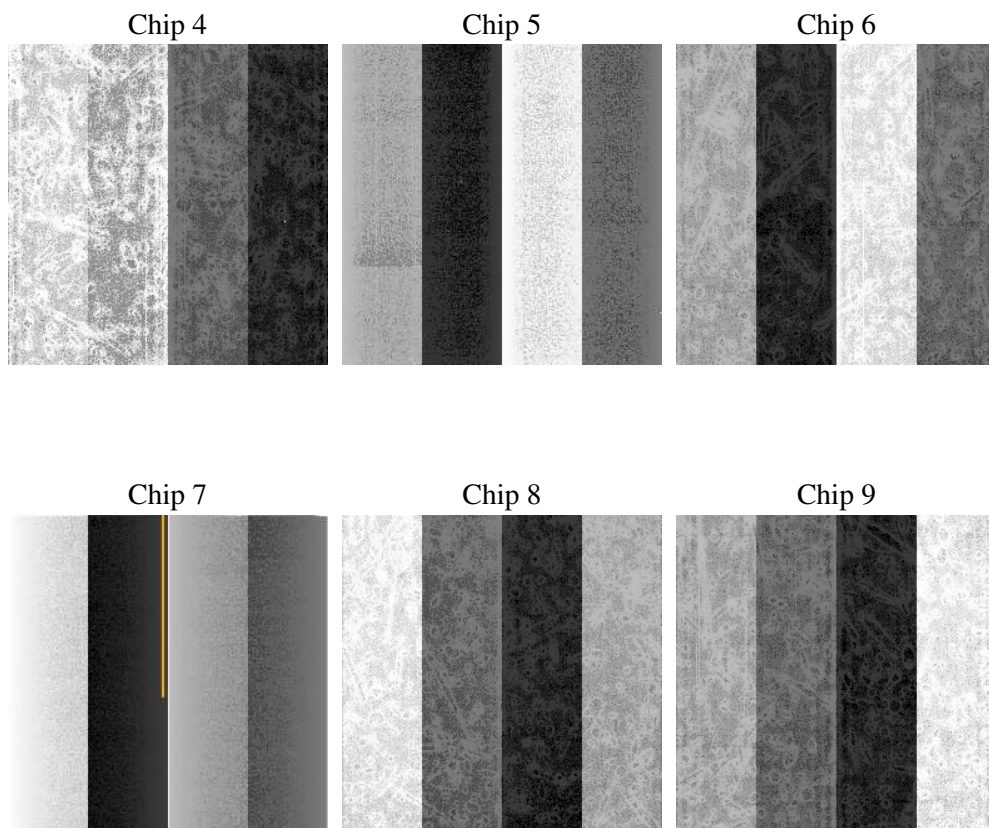
## 2 OBI

### 2.1 OBI

#### 2.1.1 Images



#### 2.1.2 Bias



### 2.1.3 Parameters

obi_num	0
ascdsver	7.6.7.2
caldbver	3.2.2
date	2006-05-31T21:31:10
revision	2

sched_exp_time	0.0
ontime	8462.260820955
ontime4	5068.9601961374
ontime5	8462.260820955
ontime6	5587.5176615715
ontime7	8462.260820955
ontime8	5736.6026829481
ontime9	5312.0333856046
l1events	1532883

### 2.1.4 Events

	ccd 4	ccd 5	ccd 6	ccd 7	ccd 8	ccd 9
level 1 events	195686	319489	227455	339896	239698	210659
rejected events	37255	64260	39510	59313	43923	38859
rejected %	19%	20%	17%	17%	18%	18%

	ccd 4	ccd 5	ccd 6	ccd 7	ccd 8	ccd 9
grade 0 events	92433	31130	102757	49106	107092	95081
	47%	9%	45%	14%	44%	45%
grade 1 events	657	121	485	118	586	543
	0%	0%	0%	0%	0%	0%
grade 2 events	25241	120050	32727	84983	34359	29684
	12%	37%	14%	25%	14%	14%
grade 3 events	10479	8284	11609	20548	12659	10845
	5%	2%	5%	6%	5%	5%
grade 4 events	10531	8206	11553	20226	12905	10858
	5%	2%	5%	5%	5%	5%
grade 5 events	2286	7009	2645	7159	3212	2694
	1%	2%	1%	2%	1%	1%
grade 6 events	20256	88227	29750	106462	29328	25877
	10%	27%	13%	31%	12%	12%
grade 7 events	33803	56462	35929	51294	39557	35077
	17%	17%	15%	15%	16%	16%

## 2.2 Compared Parameters

Parameter	Planned	Actual	Parameter	Planned	Actual
Instrument	ACIS	ACIS	Obspar format version number	6	6
Detector	ACIS-456789	ACIS-456789	Obspar file type	PREDICTED	ACTUAL
Grating	NONE	NONE	Obspar update status	NONE	UPDATED
Data mode	FAINT	FAINT	On-chip summing requested	N	N
Observation mode	SECONDARY	SECONDARY	Subarray requested	NONE	NONE
Pointing RA	0	164.9345927490232	Alternating exposures requested	N	N
Pointing Dec	0	68.9836539921246	Primary exposure time	0.000000	3.2
Pointing Roll	0.0	182.0483150968724			
SIM focus pos (mm)	-0.684267	-0.6828225247311905			
SIM defocus (mm)	0	0.8505141146731063			
SIM translation stage pos (mm)	-190.132523	250.466033080201			
SIM translation stage offset (mm)	0	-0.01005468664627074			
Observation start time	194908396.030031	194908395.00532			
Observation start date	2004-03-05T21:13:16	2004-03-05T21:13:15			
Observation end time	194929705.780965	194929704.75626			
Observation end date	2004-03-06T03:08:26	2004-03-06T03:08:24			
Read mode	TIMED	TIMED			

## 2.3 Aspect



## **2.4 Star Slots**

## **2.5 FID Slots**



## A Summary

### A.1 Status

V&V Scientist	Jen Lauer
V&V Date (YYYY-MM-DD)	2006.06.01
V&V Edition	1
V&V Disposition and Status	OK
V&V Charge Time	8.43839996

### A.2 Comments