

V&V Reference Report

L2 ASCDS Version : 8.4.5

Observation 60298 - L2 Version 3
Chandra X-Ray Center

L2 Processing Date : Nov 14 2012

Contents

| | | |
|----------|-------------------------------|----------|
| 1 | Front | 2 |
| 2 | OBI | 3 |
| 2.1 | OBI | 3 |
| 2.1.1 | Images | 3 |
| 2.1.2 | Bias | 3 |
| 2.1.3 | Parameters | 4 |
| 2.1.4 | Events | 4 |
| 2.2 | Compared Parameters | 5 |
| 2.3 | Star Slots | 6 |
| 2.4 | FID Slots | 6 |
| A | Summary | 7 |
| A.1 | Status | 7 |
| A.2 | Comments | 7 |

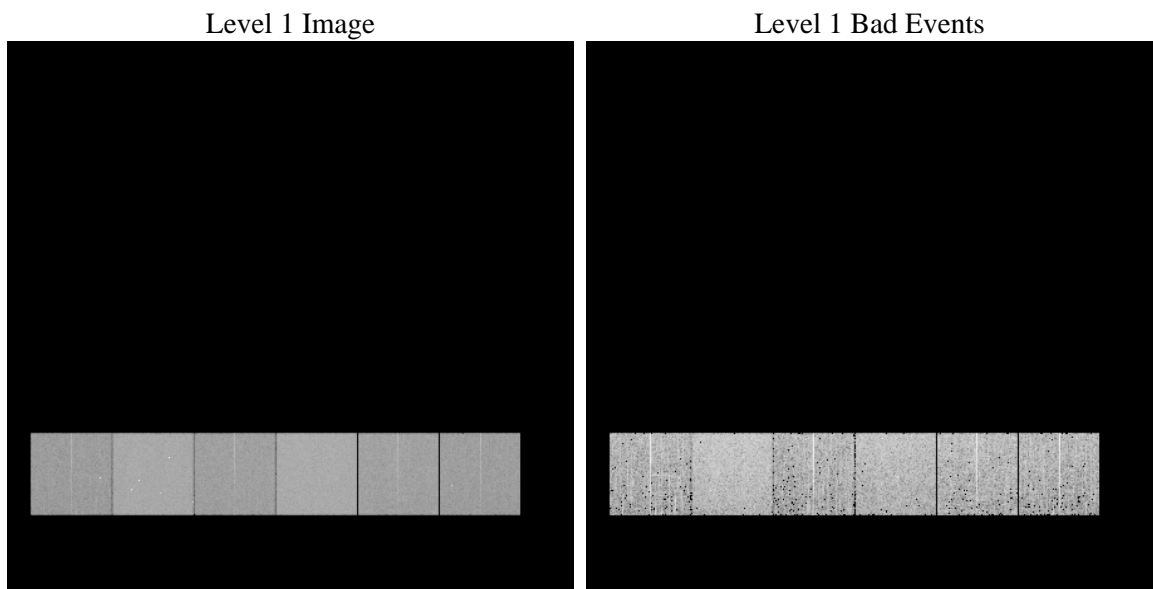
1 Front

| | | |
|----------|---|---|
| seq_num | | Sequence number |
| obs_id | 60298 | Observation id |
| title | ACIS-456789 diagnostics | Proposal title |
| observer | CHANDRA engineering request/realtime commanding | Principal investig |
| object | | Source name |
| dtcycle | 0 | |
| cycle | P | events from which exps? Prim/Second/Both |
| ra_targ | 0.0 | Observer's specified target RA [deg] |
| dec_targ | 0.0 | Observer's specified target Dec [deg] |
| ra_nom | 148.02849382032 | Nominal RA [deg] |
| dec_nom | -32.015175752203 | Nominal Dec [deg] |
| roll_nom | 294.97288787144 | Nominal Roll [deg] |
| revision | 3 | Processing version of data |
| ontime | 5539.1999793649 | Sum of GTIs [s] |
| livetime | 5469.0592939204 | Livetime [s] |
| ontime4 | 3445.206009835 | Sum of GTIs [s] |
| ontime5 | 5539.1999793649 | Sum of GTIs [s] |
| ontime6 | 3753.4248695076 | Sum of GTIs [s] |
| ontime7 | 5539.1999793649 | Sum of GTIs [s] |
| ontime8 | 3818.1830082834 | Sum of GTIs [s] |
| ontime9 | 3578.4118168652 | Sum of GTIs [s] |
| l2events | 787609 | Number of level 2 events |

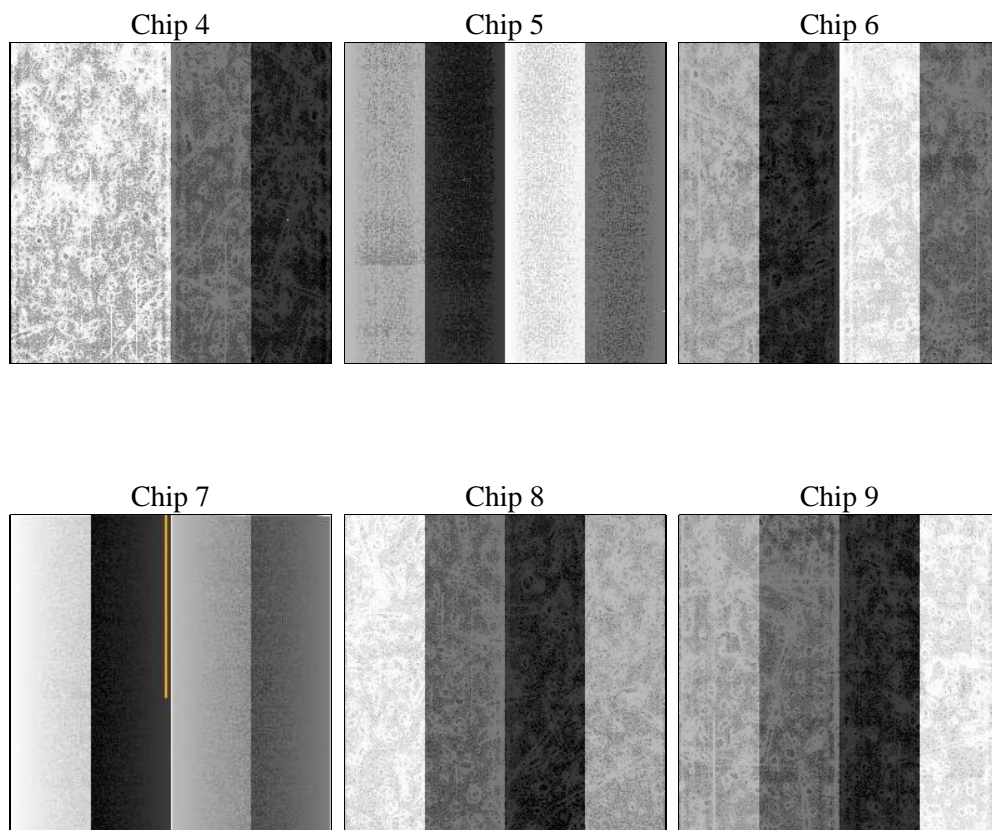
2 OBI

2.1 OBI

2.1.1 Images



2.1.2 Bias



2.1.3 Parameters

| | | | | | |
|----------|---------------------|--------------------------------|----------------|-----------------|---|
| obi_num | 0 | Obi number | sched_exp_time | 0.0 | [s] Scheduled observation exposure time |
| ascdsver | 8.4.5 | Processing system revision | ontime | 5539.1999793649 | Sum of GTIs [s] |
| caldsver | 4.5.2 | | ontime4 | 3445.206009835 | Sum of GTIs [s] |
| date | 2012-11-14T05:54:57 | Date and time of file creation | ontime5 | 5539.1999793649 | Sum of GTIs [s] |
| revision | 3 | Processing version of data | ontime6 | 3753.4248695076 | Sum of GTIs [s] |
| | | | ontime7 | 5539.1999793649 | Sum of GTIs [s] |
| | | | ontime8 | 3818.1830082834 | Sum of GTIs [s] |
| | | | ontime9 | 3578.4118168652 | Sum of GTIs [s] |
| | | | l1events | 1012986 | Number of level 1 events |

2.1.4 Events

| | ccd 4 | ccd 5 | ccd 6 | ccd 7 | ccd 8 | ccd 9 | | ccd 4 | ccd 5 | ccd 6 | ccd 7 | ccd 8 | ccd 9 |
|-----------------|--------|--------|--------|--------|--------|--------|----------------|-------|-------|-------|-------|-------|-------|
| level 1 events | 133381 | 208594 | 150267 | 221101 | 159041 | 140602 | grade 0 events | 61972 | 39158 | 67487 | 46149 | 70284 | 62920 |
| rejected events | 26643 | 37995 | 26170 | 31738 | 29877 | 26538 | | 46% | 18% | 44% | 20% | 44% | 44% |
| rejected % | 19% | 18% | 17% | 14% | 18% | 18% | grade 1 events | 449 | 217 | 338 | 152 | 391 | 355 |
| | | | | | | | | 0% | 0% | 0% | 0% | 0% | 0% |
| | | | | | | | grade 2 events | 17027 | 60814 | 21526 | 41555 | 22670 | 19513 |
| | | | | | | | | 12% | 29% | 14% | 18% | 14% | 13% |
| | | | | | | | grade 3 events | 7077 | 10130 | 7637 | 18883 | 8440 | 7280 |
| | | | | | | | | 5% | 4% | 5% | 8% | 5% | 5% |
| | | | | | | | grade 4 events | 6997 | 9931 | 7796 | 19065 | 8400 | 7309 |
| | | | | | | | | 5% | 4% | 5% | 8% | 5% | 5% |
| | | | | | | | grade 5 events | 1576 | 6076 | 1791 | 5923 | 2184 | 1920 |
| | | | | | | | | 1% | 2% | 1% | 2% | 1% | 1% |
| | | | | | | | grade 6 events | 13665 | 50662 | 19749 | 63831 | 19469 | 17151 |
| | | | | | | | | 10% | 24% | 13% | 28% | 12% | 12% |
| | | | | | | | grade 7 events | 24618 | 31606 | 23943 | 25543 | 27203 | 24154 |
| | | | | | | | | 18% | 15% | 15% | 11% | 17% | 17% |

2.2 Compared Parameters

| Parameter | Planned | Actual | Parameter | Planned | Actual |
|-----------------------------------|---------------------|----------------------|---------------------------------|-----------|---------|
| Instrument | ACIS | ACIS | Obspar format version number | 7 | 7 |
| Detector | ACIS-456789 | ACIS-456789 | Obspar file type | PREDICTED | ACTUAL |
| Grating | NONE | NONE | Obspar update status | NONE | UPDATED |
| Data mode | FAINT | FAINT | On-chip summing requested | N | N |
| Observation mode | SECONDARY | SECONDARY | Subarray requested | NONE | NONE |
| [deg] Pointing RA | 0 | 148.0284938203152 | Alternating exposures requested | N | N |
| [deg] Pointing Dec | 0 | -32.01517575220307 | [s] Primary exposure time | 0.000000 | 3.2 |
| [deg] Pointing Roll | 0.0 | 294.9728878714407 | | | |
| [mm] SIM focus pos | -0.684267 | -1.428180813131781 | | | |
| [mm] SIM defocus | 0 | 0.1051558262725154 | | | |
| [mm] SIM translation stage pos | -190.132523 | 250.466033080201 | | | |
| [mm] SIM translation stage offset | 0 | -0.01005468664627074 | | | |
| [s] Observation start time (MET) | 197203844.681121 | 197203843.65609 | | | |
| Observation start date | 2004-04-01T10:50:45 | 2004-04-01T10:50:43 | | | |
| [s] Observation end time (MET) | 197214760.931601 | 197214759.90657 | | | |
| Observation end date | 2004-04-01T13:52:41 | 2004-04-01T13:52:39 | | | |
| Read mode | TIMED | TIMED | | | |

2.3 Star Slots

2.4 FID Slots

A Summary

A.1 Status

| | |
|----------------------------|-----------------|
| V&V Scientist | Beth Sundheim |
| V&V Date (YYYY-MM-DD) | 2012.12.10 |
| V&V Edition | 1 |
| V&V Disposition and Status | OK |
| V&V Charge Time | 5.5391999793649 |

A.2 Comments