

V&V Reference Report

L2 ASCDS Version : 7.6.7.2

Observation 60298 - L2 Version 001
Chandra X-Ray Center

L2 Processing Date : May 27 2006

Contents

1	Front	2
2	OBI	3
2.1	OBI	3
2.1.1	Images	3
2.1.2	Bias	3
2.1.3	Parameters	4
2.1.4	Events	4
2.2	Compared Parameters	5
2.3	Aspect	6
2.4	Star Slots	8
2.5	FID Slots	8
A	Summary	9
A.1	Status	9
A.2	Comments	9

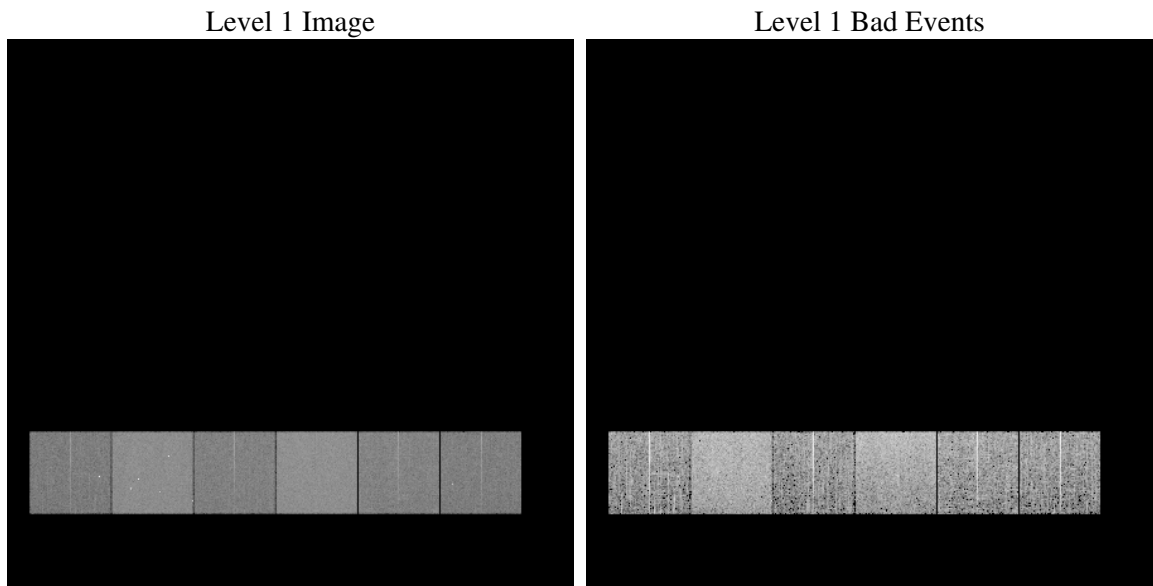
1 Front

seq_num	
obs_id	60298
title	ACIS-456789 diagnostics
observer	CHANDRA engineering request/realtime commanding
object	
dtcycle	0
cycle	P
ra_targ	0.0
dec_targ	0.0
ra_nom	148.02848001626
dec_nom	-32.015150549048
roll_nom	294.97288054041
revision	2
ontime	5539.1999793649
livetime	5469.0592939204
ontime4	3443.626126498
ontime5	5539.1999793649
ontime6	3753.4248695076
ontime7	5539.1999793649
ontime8	3818.2441649139
ontime9	3578.4118168652
l2events	776169

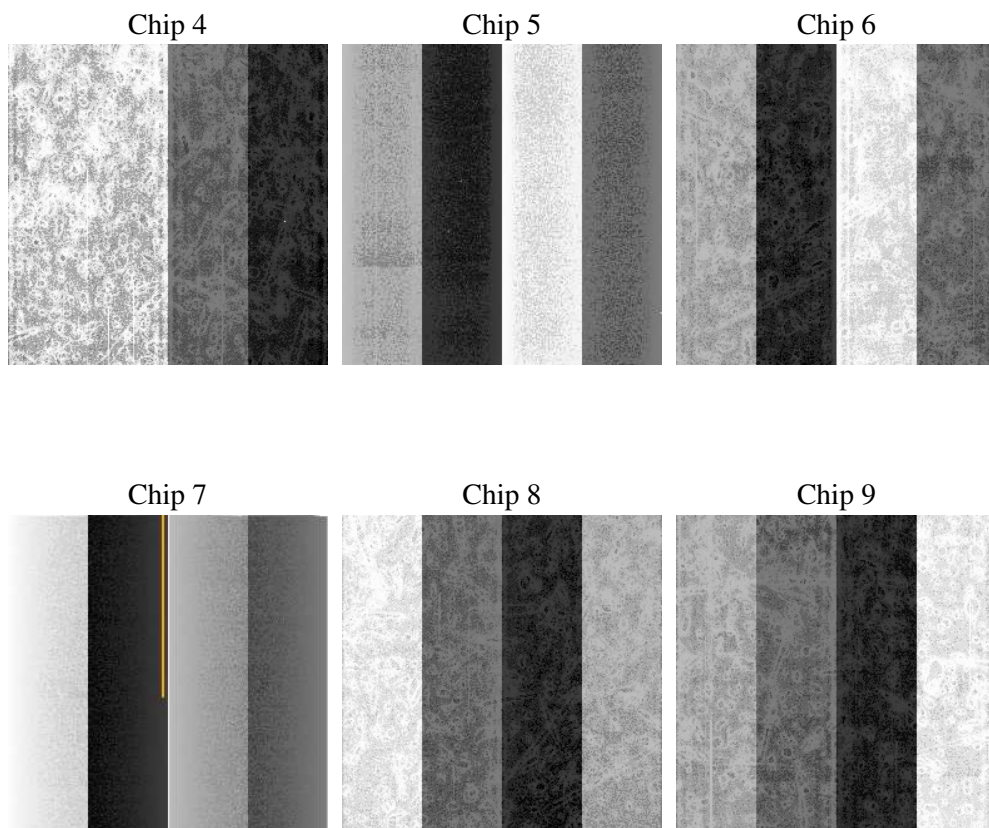
2 OBI

2.1 OBI

2.1.1 Images



2.1.2 Bias



2.1.3 Parameters

obi_num	0
ascdsver	7.6.7.2
caldsver	3.2.2
date	2006-05-27T15:08:28
revision	2

sched_exp_time	0.0
ontime	5542.1150833368
ontime4	3445.206009835
ontime5	5542.1150833368
ontime6	3756.3399734795
ontime7	5542.1150833368
ontime8	3821.1592688859
ontime9	3581.3269208372
l1events	1012986

2.1.4 Events

	ccd 4	ccd 5	ccd 6	ccd 7	ccd 8	ccd 9
level 1 events	133381	208594	150267	221101	159041	140602
rejected events	26642	42526	26182	38979	29778	26540
rejected %	19%	20%	17%	17%	18%	18%

	ccd 4	ccd 5	ccd 6	ccd 7	ccd 8	ccd 9
grade 0 events	61972	20498	67487	31656	70287	62920
	46%	9%	44%	14%	44%	44%
grade 1 events	449	148	338	97	391	355
	0%	0%	0%	0%	0%	0%
grade 2 events	17027	77111	21526	54982	22667	19513
	12%	36%	14%	24%	14%	13%
grade 3 events	7077	5142	7637	13123	8440	7280
	5%	2%	5%	5%	5%	5%
grade 4 events	6998	5120	7796	13105	8401	7309
	5%	2%	5%	5%	5%	5%
grade 5 events	1575	4228	1791	4801	2184	1920
	1%	2%	1%	2%	1%	1%
grade 6 events	13665	58305	19749	69352	19468	17151
	10%	27%	13%	31%	12%	12%
grade 7 events	24618	38042	23943	33985	27203	24154
	18%	18%	15%	15%	17%	17%

2.2 Compared Parameters

Parameter	Planned	Actual	Parameter	Planned	Actual
Instrument	ACIS	ACIS	Obspar format version number	6	6
Detector	ACIS-456789	ACIS-456789	Obspar file type	PREDICTED	ACTUAL
Grating	NONE	NONE	Obspar update status	NONE	UPDATED
Data mode	FAINT	FAINT	On-chip summing requested	N	N
Observation mode	SECONDARY	SECONDARY	Subarray requested	NONE	NONE
Pointing RA	0	148.0284800162552	Alternating exposures requested	N	N
Pointing Dec	0	-32.01515054904767	Primary exposure time	0.000000	3.2
Pointing Roll	0.0	294.9728805404108			
SIM focus pos (mm)	-0.684267	-1.428180813131781			
SIM defocus (mm)	0	0.1051558262725154			
SIM translation stage pos (mm)	-190.132523	250.466033080201			
SIM translation stage offset (mm)	0	-0.01005468664627074			
Observation start time	197203844.681121	197203843.65609			
Observation start date	2004-04-01T10:50:45	2004-04-01T10:50:43			
Observation end time	197214760.931601	197214759.90657			
Observation end date	2004-04-01T13:52:41	2004-04-01T13:52:39			
Read mode	TIMED	TIMED			

2.3 Aspect

2.4 Star Slots

2.5 FID Slots

A Summary

A.1 Status

V&V Scientist	Jen Lauer
V&V Date (YYYY-MM-DD)	2006.05.30
V&V Edition	1
V&V Disposition and Status	OK
V&V Charge Time	5.53919997

A.2 Comments