

V&V Reference Report

L2 ASCDS Version : 8.4.5

Observation 60168 - L2 Version 3
Chandra X-Ray Center

L2 Processing Date : Dec 3 2012

Contents

1	Front	2
2	OBI	3
2.1	OBI	3
2.1.1	Images	3
2.1.2	Bias	3
2.1.3	Parameters	4
2.1.4	Events	4
2.2	Compared Parameters	5
2.3	Star Slots	6
2.4	FID Slots	6
A	Summary	7
A.1	Status	7
A.2	Comments	7

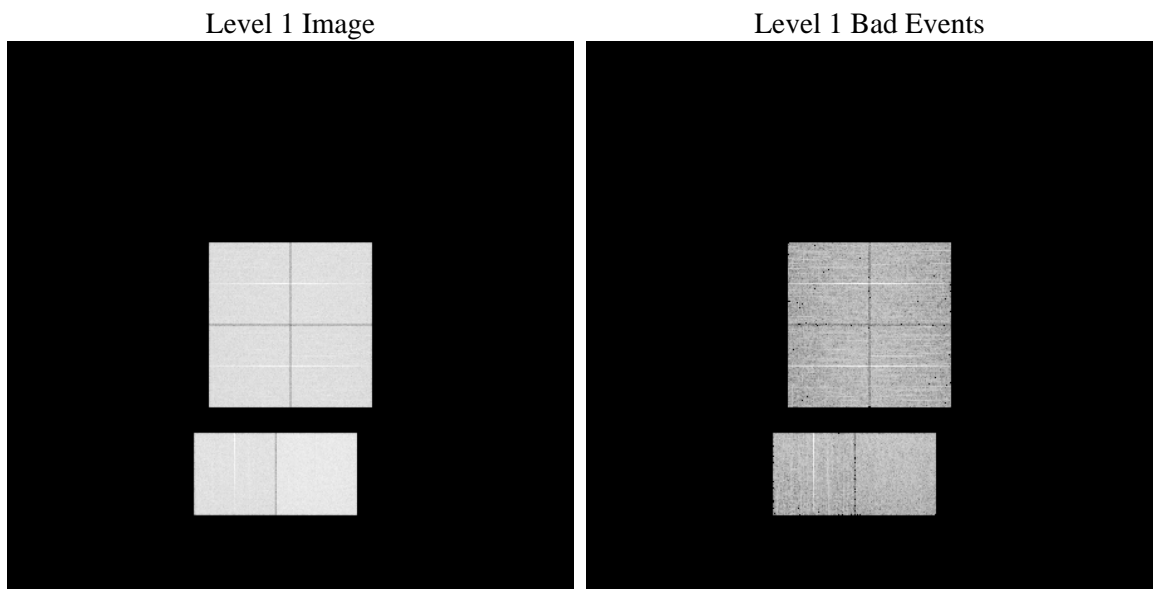
1 Front

seq_num	 	Sequence number
obs_id	60168	Observation id
title	ACIS-012367 diagnostics	Proposal title
observer	CHANDRA engineering request/realtime commanding	Principal investig
object	 	Source name
dtcycle	0	
cycle	P	events from which exps? Prim/Second/Both
ra_targ	0.0	Observer's specified target RA [deg]
dec_targ	0.0	Observer's specified target Dec [deg]
ra_nom	274.47300769024	Nominal RA [deg]
dec_nom	-19.99343144877	Nominal Dec [deg]
roll_nom	140.66353073874	Nominal Roll [deg]
revision	3	Processing version of data
ontime	8278.3999691606	Sum of GTIs [s]
livetime	8173.573884097	Livetime [s]
ontime0	6168.5276044607	Sum of GTIs [s]
ontime1	6424.5648848712	Sum of GTIs [s]
ontime2	6071.2984366119	Sum of GTIs [s]
ontime3	6093.9846299291	Sum of GTIs [s]
ontime6	6576.8901300132	Sum of GTIs [s]
ontime7	8278.3999691606	Sum of GTIs [s]
l2events	1163047	Number of level 2 events

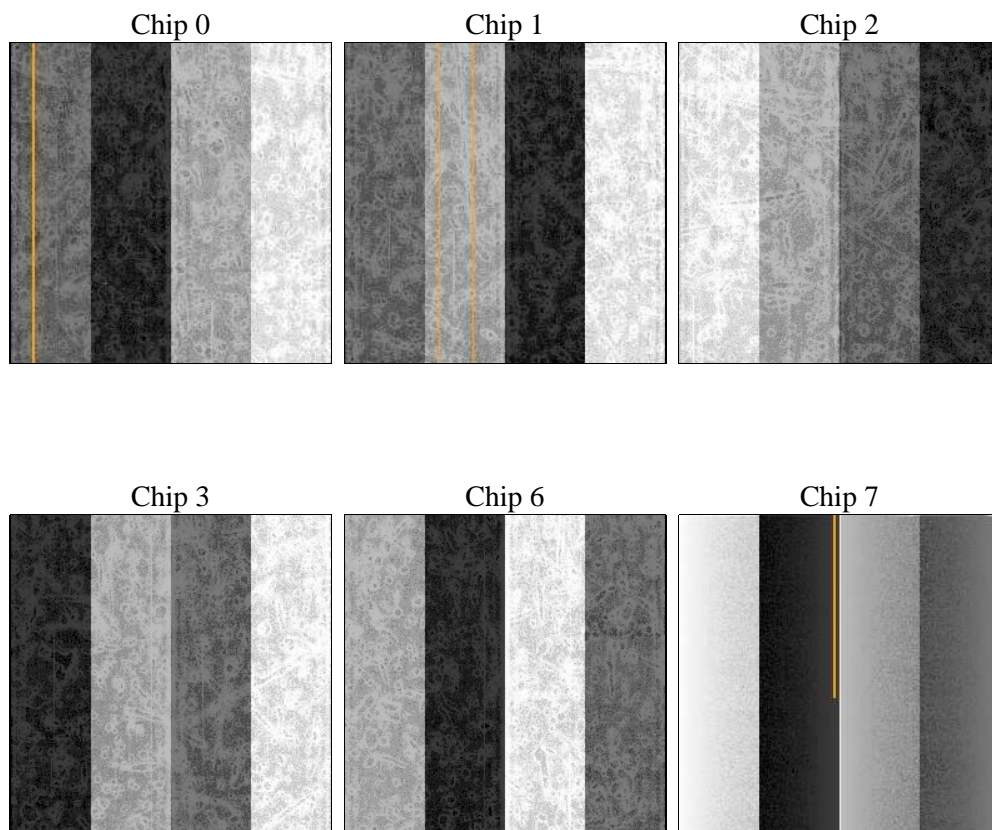
2 OBI

2.1 OBI

2.1.1 Images



2.1.2 Bias



2.1.3 Parameters

obi_num	0	Obi number	sched_exp_time	0.0	[s] Scheduled observation exposure time
ascdsver	8.4.5	Processing system revision	ontime	8278.3999691606	Sum of GTIs [s]
caldsver	4.5.2	 	ontime0	6168.5276044607	Sum of GTIs [s]
date	2012-12-03T12:56:52	Date and time of file creation	ontime1	6424.5648848712	Sum of GTIs [s]
revision	3	Processing version of data	ontime2	6071.2984366119	Sum of GTIs [s]
			ontime3	6093.9846299291	Sum of GTIs [s]
			ontime6	6576.8901300132	Sum of GTIs [s]
			ontime7	8278.3999691606	Sum of GTIs [s]
			l1events	1500428	Number of level 1 events

2.1.4 Events

	ccd 0	ccd 1	ccd 2	ccd 3	ccd 6	ccd 7		ccd 0	ccd 1	ccd 2	ccd 3	ccd 6	ccd 7
level 1 events	227465	236826	227612	232002	254222	322301	grade 0 events	100821	104940	102530	103189	112225	65598
rejected events	44248	44978	44468	47644	47758	50939		44%	44%	45%	44%	44%	20%
rejected %	19%	18%	19%	20%	18%	15%	grade 1 events	603	537	699	705	580	222
								0%	0%	0%	0%	0%	0%
							grade 2 events	32131	34208	30729	31665	35744	59864
								14%	14%	13%	13%	14%	18%
							grade 3 events	11666	12269	12116	12090	12729	27263
								5%	5%	5%	5%	5%	8%
							grade 4 events	11971	12211	12007	12051	12901	26947
								5%	5%	5%	5%	5%	8%
							grade 5 events	2727	2930	2676	3083	3220	9067
								1%	1%	1%	1%	1%	2%
							grade 6 events	26628	28220	25762	25363	32865	91690
								11%	11%	11%	10%	12%	28%
							grade 7 events	40918	41511	41093	43856	43958	41650
								17%	17%	18%	18%	17%	12%

2.2 Compared Parameters

Parameter	Planned	Actual	Parameter	Planned	Actual
Instrument	ACIS	ACIS	Obspar format version number	7	7
Detector	ACIS-012367	ACIS-012367	Obspar file type	PREDICTED	ACTUAL
Grating	NONE	NONE	Obspar update status	NONE	UPDATED
Data mode	FAINT	FAINT	On-chip summing requested	N	N
Observation mode	SECONDARY	SECONDARY	Subarray requested	NONE	NONE
[deg] Pointing RA	0	274.4730076902401	Alternating exposures requested	N	N
[deg] Pointing Dec	0	-19.99343144877	[s] Primary exposure time	3.2	3.2
[deg] Pointing Roll	0.0	140.6635307387377			
[mm] SIM focus pos	-0.782348	-0.6828225247311905			
[mm] SIM defocus	0	0.8505141146731063			
[mm] SIM translation stage pos	-233.592463	250.466033080201			
[mm] SIM translation stage offset	0	-0.01005468664627074			
[s] Observation start time (MET)	204288269.843708	204288268.81871			
Observation start date	2004-06-22T10:44:30	2004-06-22T10:44:28			
[s] Observation end time (MET)	204299827.74422	204299826.71922			
Observation end date	2004-06-22T13:57:08	2004-06-22T13:57:06			
Read mode	TIMED	TIMED			

2.3 Star Slots

2.4 FID Slots

A Summary

A.1 Status

V&V Scientist	Beth Sundheim
V&V Date (YYYY-MM-DD)	2012.12.23
V&V Edition	1
V&V Disposition and Status	OK
V&V Charge Time	8.2783999691606

A.2 Comments