

V&V Reference Report

L2 ASCDS Version : 7.6.7.1

Observation 59968 - L2 Version 001
Chandra X-Ray Center

L2 Processing Date : Apr 12 2006

Contents

1	Front	2
2	OBI	3
2.1	OBI	3
2.1.1	Images	3
2.1.2	Bias	3
2.1.3	Parameters	4
2.1.4	Events	4
2.2	Compared Parameters	5
2.3	Aspect	6
2.4	Star Slots	8
2.5	FID Slots	8
A	Summary	9
A.1	Status	9
A.2	Comments	9

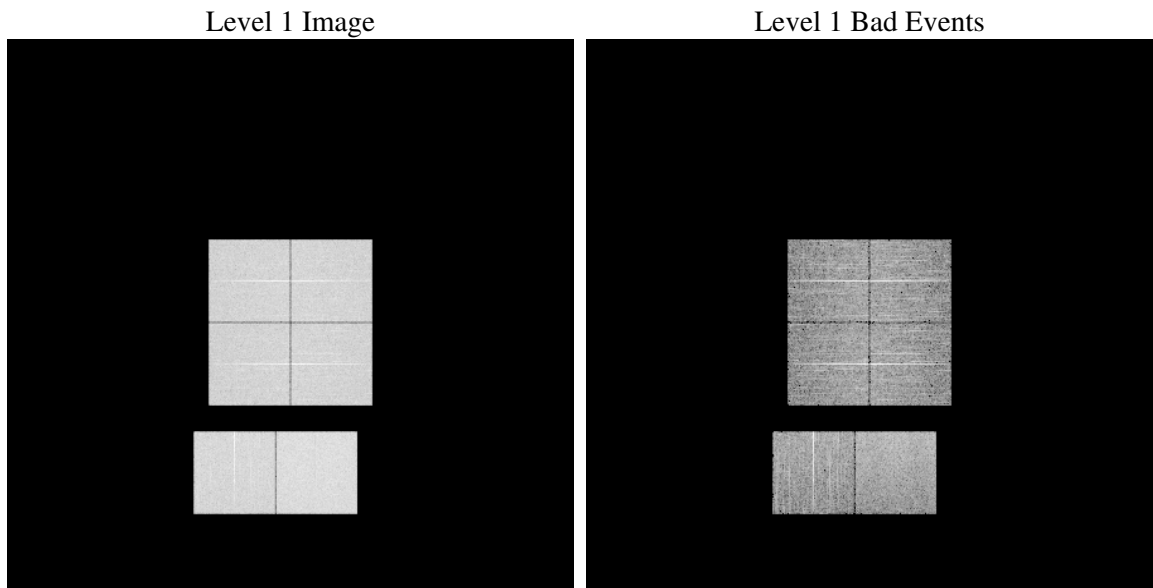
1 Front

seq_num	
obs_id	59968
title	ACIS-012367 diagnostics
observer	CHANDRA engineering request/realtime commanding
object	
dtcycle	0
cycle	P
ra_targ	0.0
dec_targ	0.0
ra_nom	53.285649471492
dec_nom	-27.932575565469
roll_nom	4.6514838888622
revision	2
ontime	7791.8756088316
livetime	7693.2101881684
ontime0	6537.6579268873
ontime1	6641.4104838967
ontime2	6340.0006003976
ontime3	6472.7563609183
ontime6	6839.1114443839
ontime7	7791.8756088316
l2events	1080252

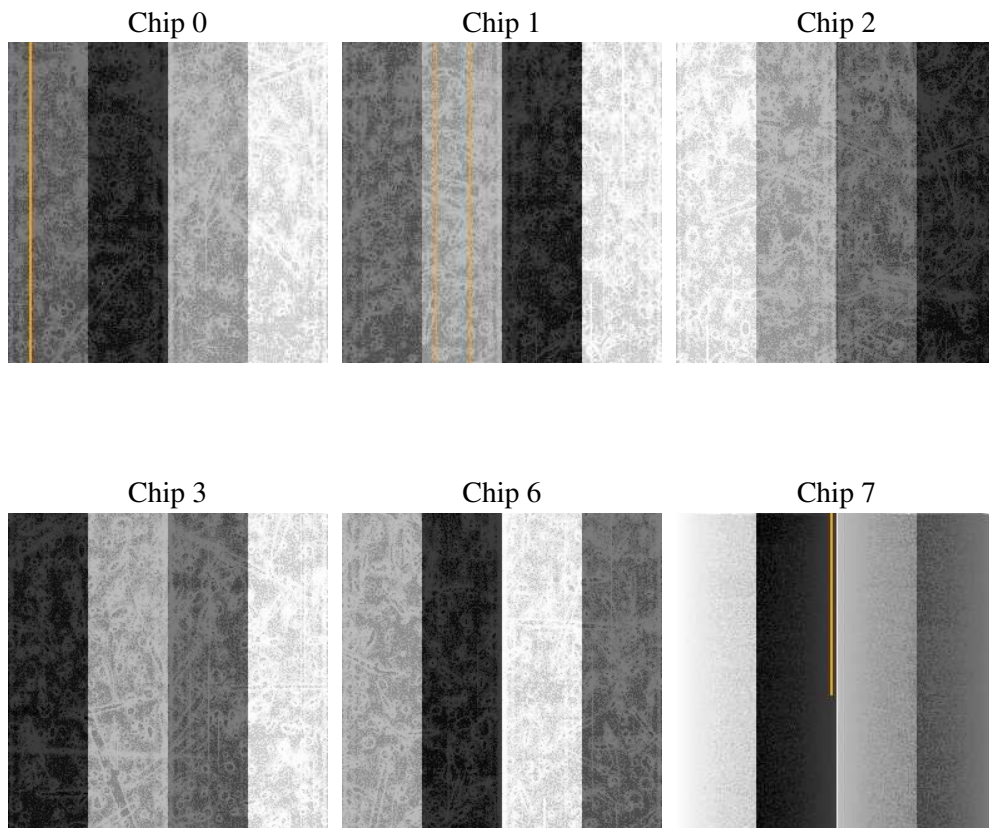
2 OBI

2.1 OBI

2.1.1 Images



2.1.2 Bias



2.1.3 Parameters

obi_num	2
ascdsver	7.6.7.1
caldsver	3.2.1
date	2006-04-12T15:48:19
revision	2

sched_exp_time	0.0
ontime	7794.6250395179
ontime0	6540.3663175702
ontime1	6644.0778345764
ontime2	6342.6666890383
ontime3	6475.5468316078
ontime6	6841.7775330245
ontime7	7794.6250395179
l1events	1410836

2.1.4 Events

	ccd 0	ccd 1	ccd 2	ccd 3	ccd 6	ccd 7
level 1 events	222358	226015	217846	223267	244097	277253
rejected events	42546	44400	42613	44892	47268	54508
rejected %	19%	19%	19%	20%	19%	19%

	ccd 0	ccd 1	ccd 2	ccd 3	ccd 6	ccd 7
grade 0 events	99354	99862	98381	100215	106850	36981
	44%	44%	45%	44%	43%	13%
grade 1 events	554	453	520	594	508	114
	0%	0%	0%	0%	0%	0%
grade 2 events	31249	32394	29571	30637	34055	68746
	14%	14%	13%	13%	13%	24%
grade 3 events	11557	11403	11376	11611	12200	15166
	5%	5%	5%	5%	4%	5%
grade 4 events	11693	11438	11416	11729	12224	15088
	5%	5%	5%	5%	5%	5%
grade 5 events	2786	2813	2611	2807	3246	6266
	1%	1%	1%	1%	1%	2%
grade 6 events	26053	26603	24589	24275	31597	86857
	11%	11%	11%	10%	12%	31%
grade 7 events	39112	41049	39382	41399	43417	48035
	17%	18%	18%	18%	17%	17%

2.2 Compared Parameters

Parameter	Planned	Actual	Parameter	Planned	Actual
Instrument	ACIS	ACIS	Obspar format version number	6	6
Detector	ACIS-012367	ACIS-012367	Obspar file type	PREDICTED	ACTUAL
Grating	NONE	NONE	Obspar update status	NONE	UPDATED
Data mode	FAINT	FAINT	On-chip summing requested	N	N
Observation mode	SECONDARY	SECONDARY	Subarray requested	NONE	NONE
Pointing RA	0	53.28564947149233	Alternating exposures requested	N	N
Pointing Dec	0	-27.93257556546876	Primary exposure time	3.2	3.2
Pointing Roll	0.0	4.651483888862229			
SIM focus pos (mm)	-0.782348	-0.7809083437167272			
SIM defocus (mm)	0	0.7524282956875696			
SIM translation stage pos (mm)	-233.592463	250.466033080201			
SIM translation stage offset (mm)	0	-0.01005468664627074			
Observation start time	216804723.751696	216804722.7267			
Observation start date	2004-11-14T07:32:04	2004-11-14T07:32:02			
Observation end time	216843997.653458	216843996.62846			
Observation end date	2004-11-14T18:26:38	2004-11-14T18:26:36			
Read mode	TIMED	TIMED			

2.3 Aspect

2.4 Star Slots

2.5 FID Slots

A Summary

A.1 Status

V&V Scientist	Jen Lauer
V&V Date (YYYY-MM-DD)	2006.04.12
V&V Edition	1
V&V Disposition and Status	OK
V&V Charge Time	7.7918756

A.2 Comments