

# V&V Reference Report

## L2 ASCDS Version : 7.6.7.1

Observation 59528 - L2 Version 002  
Chandra X-Ray Center

L2 Processing Date : Mar 16 2006

## Contents

<b>1</b>	<b>Front</b>	<b>2</b>
<b>2</b>	<b>OBI</b>	<b>3</b>
2.1	OBI . . . . .	3
2.1.1	Images . . . . .	3
2.1.2	Bias . . . . .	3
2.1.3	Parameters . . . . .	4
2.1.4	Events . . . . .	4
2.2	Compared Parameters . . . . .	5
2.3	Aspect . . . . .	6
2.4	Star Slots . . . . .	8
2.5	FID Slots . . . . .	8
<b>A</b>	<b>Summary</b>	<b>9</b>
A.1	Status . . . . .	9
A.2	Comments . . . . .	9

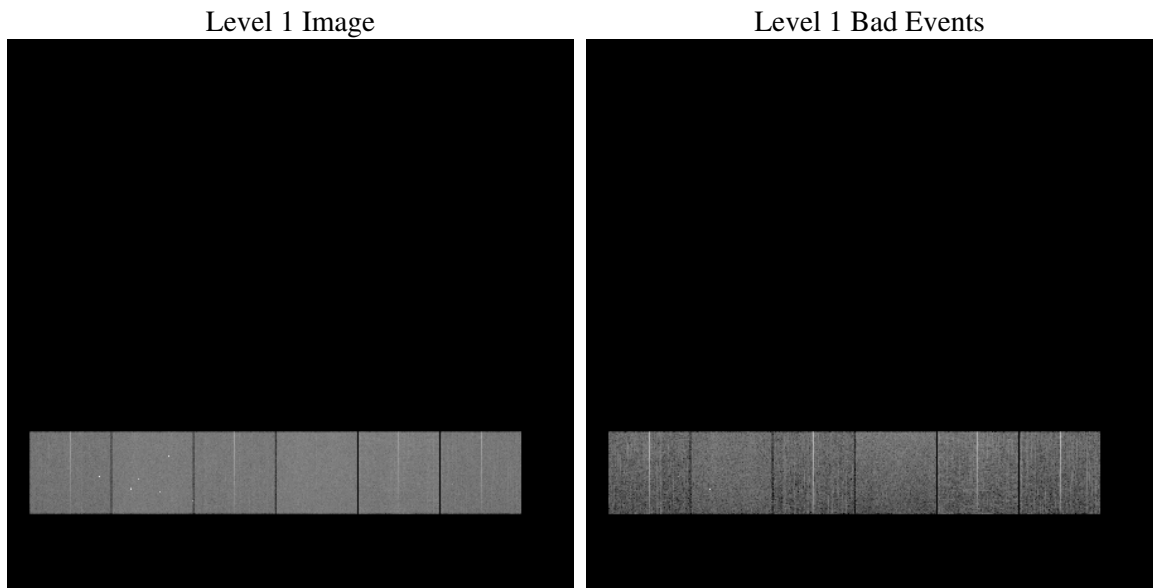
# 1 Front

seq_num	&#160
obs_id	59528
title	ACIS-456789 diagnostics
observer	CHANDRA engineering request/realtime commanding
object	&#160
dtcycle	0
cycle	P
ra_targ	0.0
dec_targ	0.0
ra_nom	276.02392587834
dec_nom	-26.522423583819
roll_nom	278.31653118908
revision	2
ontime	8276.8982200623
livetime	8172.0911510501
ontime4	7136.1972954571
ontime5	8276.9392600656
ontime6	7648.2306230366
ontime7	8276.8982200623
ontime8	7927.0368974507
ontime9	7408.2752403617
l2events	1034696

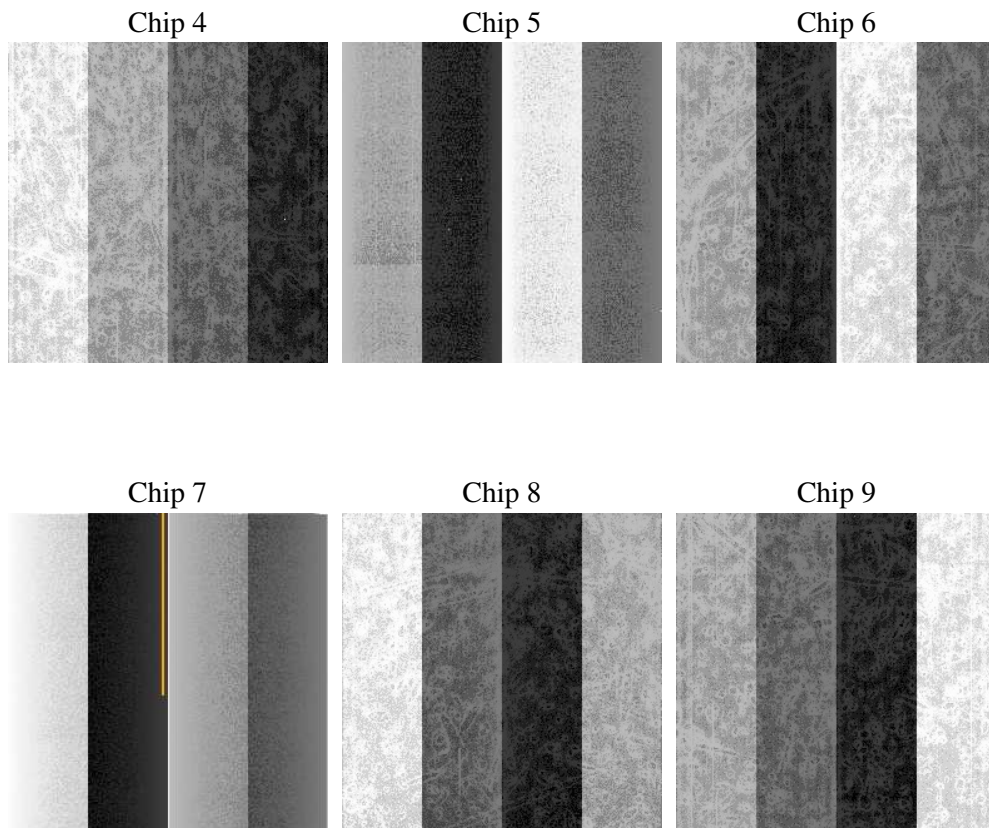
## 2 OBI

### 2.1 OBI

#### 2.1.1 Images



#### 2.1.2 Bias



### 2.1.3 Parameters

obi_num	1
ascdsver	7.6.7.1
caldsver	3.2.1
date	2006-03-16T05:27:33
revision	2

sched_exp_time	0.0
ontime	8277.5338086486
ontime4	7136.7097640336
ontime5	8277.5338086486
ontime6	7648.7841316164
ontime7	8277.5338086486
ontime8	7927.5083260536
ontime9	7408.9518689513
l1events	1487516

### 2.1.4 Events

	ccd 4	ccd 5	ccd 6	ccd 7	ccd 8	ccd 9
level 1 events	218487	260609	243189	270652	264758	229821
rejected events	59133	67374	61158	64846	68138	59807
rejected %	27%	25%	25%	23%	25%	26%

	ccd 4	ccd 5	ccd 6	ccd 7	ccd 8	ccd 9
grade 0 events	93373	21819	98593	32727	105877	93962
	42%	8%	40%	12%	39%	40%
grade 1 events	781	136	567	111	614	590
	0%	0%	0%	0%	0%	0%
grade 2 events	24671	88374	31829	63133	34840	28894
	11%	33%	13%	23%	13%	12%
grade 3 events	10645	5587	11225	13950	12959	10965
	4%	2%	4%	5%	4%	4%
grade 4 events	10593	5377	11289	13681	12851	10810
	4%	2%	4%	5%	4%	4%
grade 5 events	3327	6739	3656	7147	4698	3886
	1%	2%	1%	2%	1%	1%
grade 6 events	20072	72078	29095	82315	30093	25383
	9%	27%	11%	30%	11%	11%
grade 7 events	55025	60499	56935	57588	62826	55331
	25%	23%	23%	21%	23%	24%

## 2.2 Compared Parameters

Parameter	Planned	Actual	Parameter	Planned	Actual
Instrument	ACIS	ACIS	Obspar format version number	6	6
Detector	ACIS-456789	ACIS-456789	Obspar file type	PREDICTED	ACTUAL
Grating	NONE	NONE	Obspar update status	NONE	UPDATED
Data mode	FAINT	FAINT	On-chip summing requested	N	N
Observation mode	SECONDARY	SECONDARY	Subarray requested	NONE	NONE
Pointing RA	0	276.0239258783384	Alternating exposures requested	N	N
Pointing Dec	0	-26.52242358381851	Primary exposure time	3.2	3.2
Pointing Roll	0.0	278.3165311890816			
SIM focus pos (mm)	-0.684267	-0.6828225247311905			
SIM defocus (mm)	0	0.8505141146731063			
SIM translation stage pos (mm)	-190.132523	250.4635187648994			
SIM translation stage offset (mm)	0	-0.007540371344731511			
Observation start time	238772137.298071	238772136.27304			
Observation start date	2005-07-26T13:35:37	2005-07-26T13:35:36			
Observation end time	238795312.549133	238795311.5241			
Observation end date	2005-07-26T20:01:53	2005-07-26T20:01:51			
Read mode	TIMED	TIMED			

## 2.3 Aspect



## **2.4 Star Slots**

## **2.5 FID Slots**



## A Summary

### A.1 Status

V&V Scientist	Jen Lauer
V&V Date (YYYY-MM-DD)	2006.03.16
V&V Edition	1
V&V Disposition and Status	OK
V&V Charge Time	8.27689822

### A.2 Comments