

V&V Reference Report

L2 ASCDS Version : 8.4.4

Observation 58508 - L2 Version 2
Chandra X-Ray Center

L2 Processing Date : Apr 20 2012

Contents

1	Front	2
2	OBI	3
2.1	OBI	3
2.1.1	Images	3
2.1.2	Bias	3
2.1.3	Parameters	4
2.1.4	Events	4
2.2	Compared Parameters	5
2.3	Star Slots	6
2.4	FID Slots	6
A	Summary	7
A.1	Status	7
A.2	Comments	7

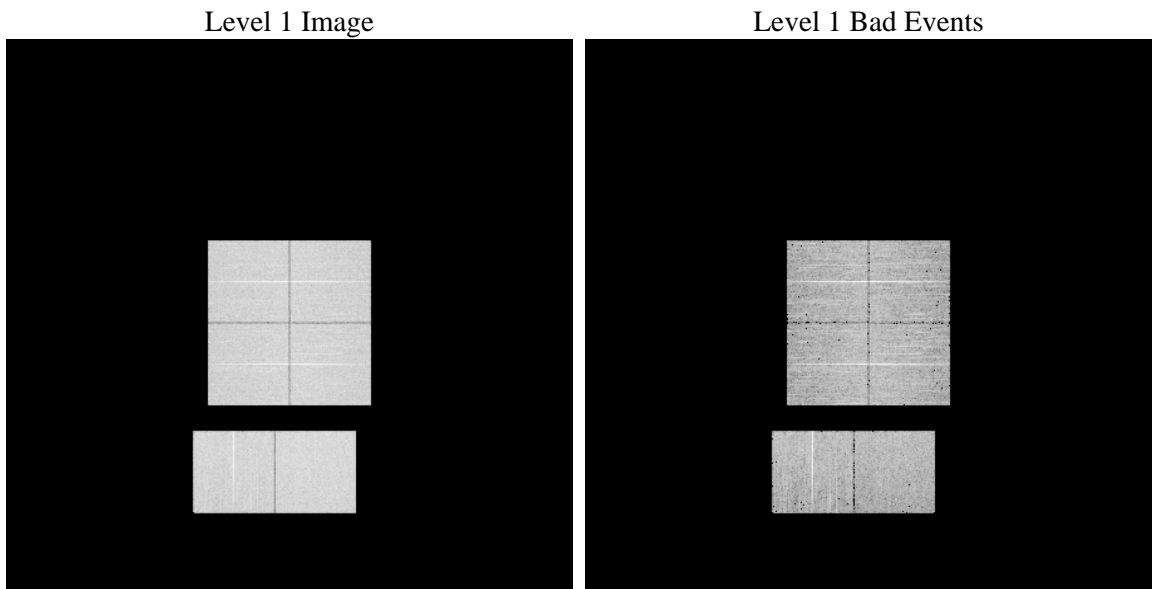
1 Front

seq_num	 	Sequence number
obs_id	58508	Observation id
title	ACIS-012367 diagnostics	Proposal title
observer	CHANDRA engineering request/realtime commanding	Principal investig
object	 	Source name
dtcycle	0	
cycle	P	events from which exps? Prim/Second/Both
ra_targ	0.0	Observer's specified target RA [deg]
dec_targ	0.0	Observer's specified target Dec [deg]
ra_nom	186.17756369033	Nominal RA [deg]
dec_nom	26.507845875132	Nominal Dec [deg]
roll_nom	131.95833166249	Nominal Roll [deg]
revision	2	Processing version of data
ontime	5503.9999795556	Sum of GTIs [s]
livetime	5434.3050177036	Livetime [s]
ontime0	5503.9999795556	Sum of GTIs [s]
ontime1	5503.9999795556	Sum of GTIs [s]
ontime2	5503.9999795556	Sum of GTIs [s]
ontime3	5503.9999795556	Sum of GTIs [s]
ontime6	5503.9999795556	Sum of GTIs [s]
ontime7	5503.9999795556	Sum of GTIs [s]
l2events	545479	Number of level 2 events

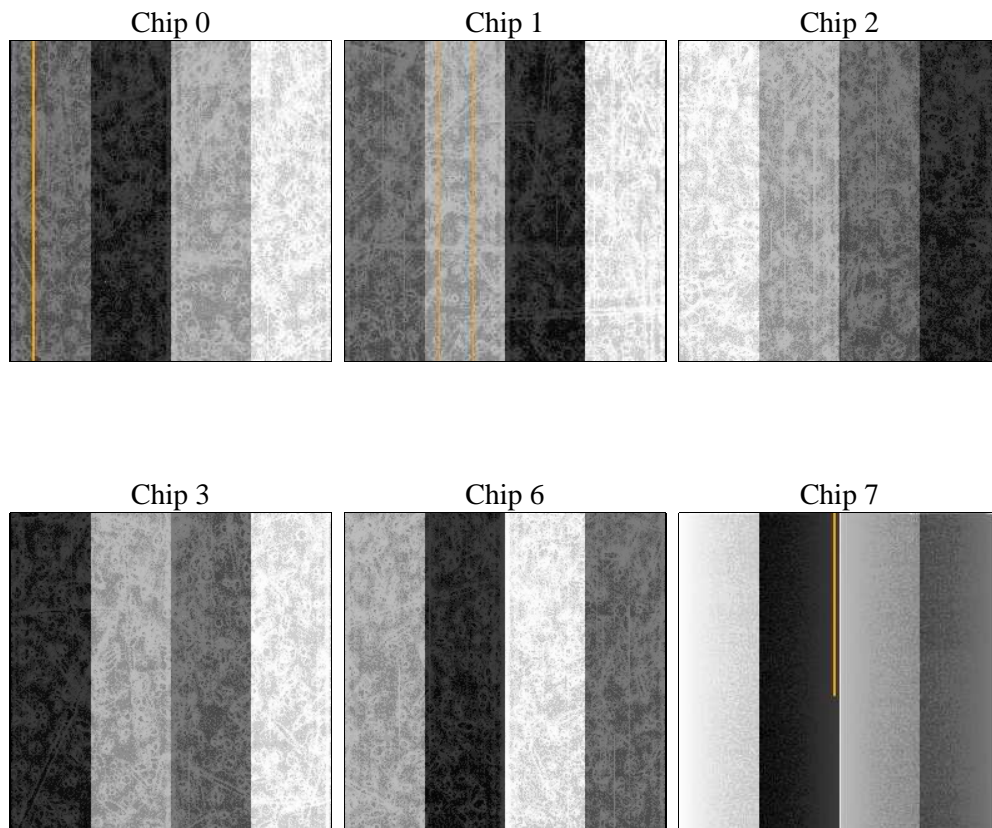
2 OBI

2.1 OBI

2.1.1 Images



2.1.2 Bias



2.1.3 Parameters

obi_num	0	Obi number	sched_exp_time	0.0	[s] Scheduled observation exposure time
ascdsver	8.4.4	Processing system revision	ontime	5503.9999795556	Sum of GTIs [s]
caldsver	4.4.9	 	ontime0	5503.9999795556	Sum of GTIs [s]
date	2012-04-21T02:15:44	Date and time of file creation	ontime1	5503.9999795556	Sum of GTIs [s]
revision	2	Processing version of data	ontime2	5503.9999795556	Sum of GTIs [s]
			ontime3	5503.9999795556	Sum of GTIs [s]
			ontime6	5503.9999795556	Sum of GTIs [s]
			ontime7	5503.9999795556	Sum of GTIs [s]
			l1events	851266	Number of level 1 events

2.1.4 Events

	ccd 0	ccd 1	ccd 2	ccd 3	ccd 6	ccd 7		ccd 0	ccd 1	ccd 2	ccd 3	ccd 6	ccd 7
level 1 events	137078	135779	138696	140587	144531	154595	grade 0 events	49396	49112	50335	50530	50844	24919
rejected events	45869	44069	47523	48788	48783	41525		36%	36%	36%	35%	35%	16%
rejected %	33%	32%	34%	34%	33%	26%	grade 1 events	315	320	381	363	329	118
								0%	0%	0%	0%	0%	0%
							grade 2 events	16105	16568	15547	15775	16816	24558
								11%	12%	11%	11%	11%	15%
							grade 3 events	5902	6007	5999	6174	6077	10961
								4%	4%	4%	4%	4%	7%
							grade 4 events	5990	5865	6029	6080	6021	10604
								4%	4%	4%	4%	4%	6%
							grade 5 events	2510	2665	2429	2965	2754	7090
								1%	1%	1%	2%	1%	4%
							grade 6 events	13816	14158	13263	13240	15990	42028
								10%	10%	9%	9%	11%	27%
							grade 7 events	43044	41084	44713	45460	45700	34317
								31%	30%	32%	32%	31%	22%

2.2 Compared Parameters

Parameter	Planned	Actual
Instrument	ACIS	ACIS
Detector	ACIS-012367	ACIS-012367
Grating	NONE	NONE
Data mode	FAINT	FAINT
Observation mode	SECONDARY	SECONDARY
[deg] Pointing RA	0	186.1775636903297
[deg] Pointing Dec	0	26.50784587513191
[deg] Pointing Roll	0.0	131.9583316624864
[mm] SIM focus pos	-0.782348	-0.7809083437167272
[mm] SIM defocus	0	0.7524282956875696
[mm] SIM translation stage pos	-233.592463	250.466033080201
[mm] SIM translation stage offset	0	-0.01005468664627074
[s] Observation start time (MET)	289454084.664052	289454083.63904
Observation start date	2007-03-05T03:54:45	2007-03-05T03:54:43
[s] Observation end time (MET)	289469656.464792	289469655.43978
Observation end date	2007-03-05T08:14:16	2007-03-05T08:14:15
Read mode	TIMED	TIMED

Parameter	Planned	Actual
Obspar format version number	7	7
Obspar file type	PREDICTED	ACTUAL
Obspar update status	NONE	UPDATED
On-chip summing requested	N	N
Subarray requested	NONE	NONE
Alternating exposures requested	N	N
[s] Primary exposure time	3.2	3.2

2.3 Star Slots

2.4 FID Slots

A Summary

A.1 Status

V&V Scientist	Beth Sundheim
V&V Date (YYYY-MM-DD)	2012.04.22
V&V Edition	1
V&V Disposition and Status	OK
V&V Charge Time	5.5039999795556

A.2 Comments