

V&V Reference Report

L2 ASCDS Version : 8.5.1.1

Observation 5848 - L2 Version 3
Chandra X-Ray Center

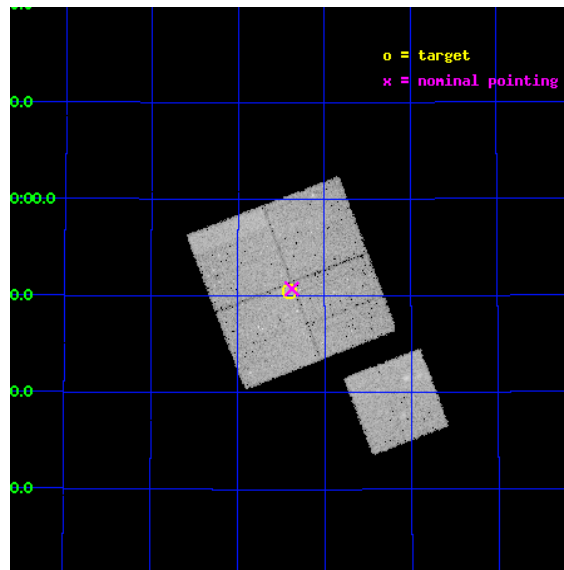
L2 Processing Date : Dec 21 2012

Contents

1	Front	2
2	OBI	3
2.1	OBI	3
2.1.1	Images	3
2.1.2	Bias	3
2.1.3	Parameters	4
2.1.4	Events	4
2.2	Compared Parameters	5
2.3	Aspect	6
2.4	Star Slots	9
2.4.1	Slot 3	9
2.4.2	Slot 4	10
2.4.3	Slot 5	11
2.4.4	Slot 6	12
2.4.5	Slot 7	13
2.5	FID Slots	14
2.5.1	Slot 0	14
2.5.2	Slot 1	15
2.5.3	Slot 2	16
A	Summary	17
A.1	Status	17
A.2	Comments	17

1 Front

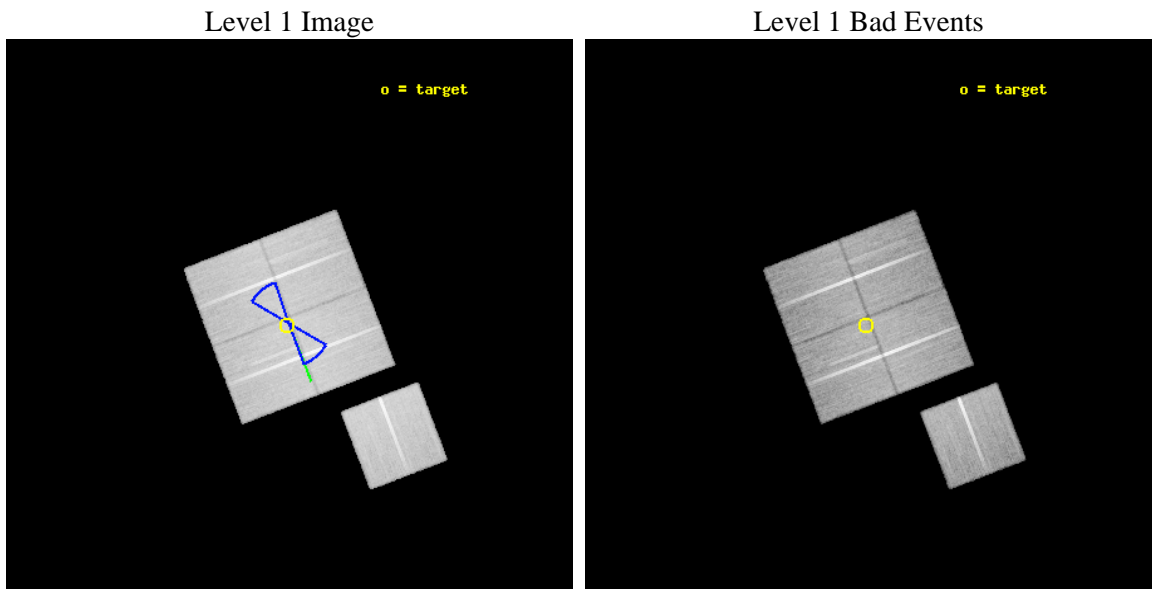
seq_num	900351	Sequence number
obs_id	5848	Observation id
title	Deep Chandra Imaging of the Extended Groth Strip: The Co-evolution of Black Holes and Galaxies	Proposal title
observer	Prof Kirpal Nandra	Principal investigator
object	EGS-4	Source name
dtcycle	0	
cycle	P	events from which exps? Prim/Second/Both
ra_targ	214.849579	Observer's specified target RA [deg]
dec_targ	52.842415	Observer's specified target Dec [deg]
ra_nom	214.84404234911	Nominal RA [deg]
dec_nom	52.845636230323	Nominal Dec [deg]
roll_nom	159.01310001992	Nominal Roll [deg]
revision	3	Processing version of data
ontime	45036.492927939	Sum of GTIs [s]
livetime	44448.057992451	Livetime [s]
ontime0	45045.79274863	Sum of GTIs [s]
ontime1	45045.833768755	Sum of GTIs [s]
ontime2	45042.733838469	Sum of GTIs [s]
ontime3	45036.492927939	Sum of GTIs [s]
ontime6	45045.751708627	Sum of GTIs [s]
l2events	119558	Number of level 2 events



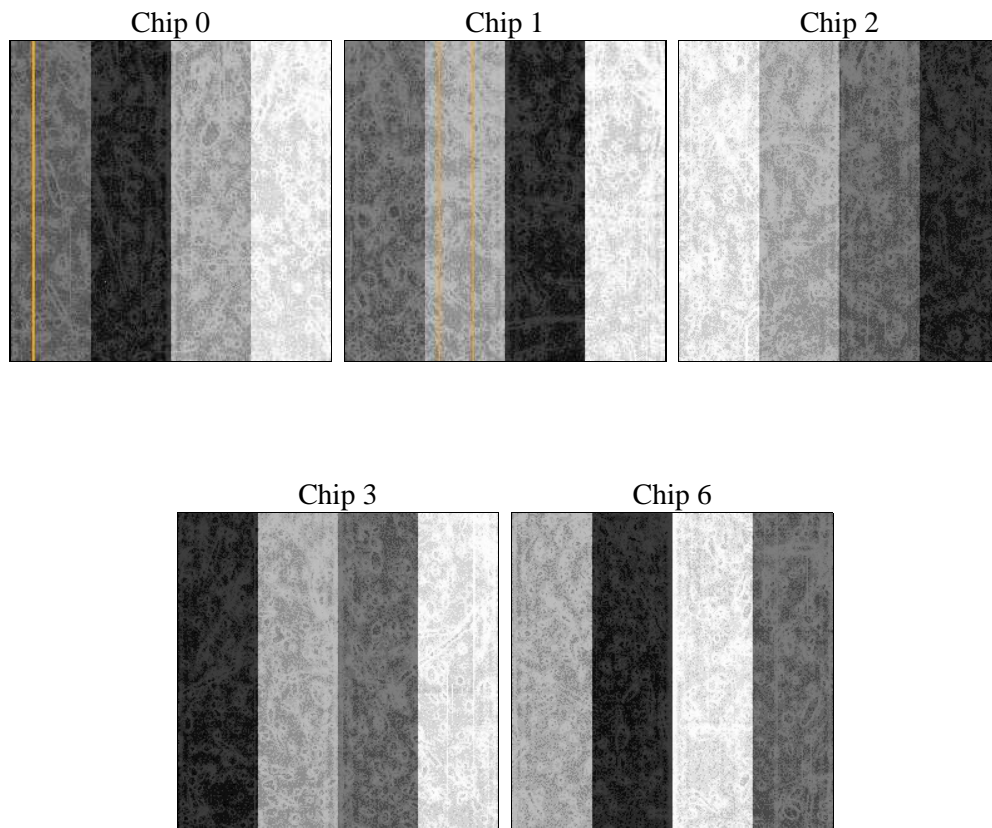
2 OBI

2.1 OBI

2.1.1 Images



2.1.2 Bias



2.1.3 Parameters

obi_num	1	Obi number	sched_exp_time	45000.000000	[s] Scheduled observation exposure time
ascdsver	8.5.1.1	Processing system revision	ontime	45036.492927939	Sum of GTIs [s]
caldsver	4.5.5	 	ontime0	45045.79274863	Sum of GTIs [s]
date	2012-12-21T22:13:23	Date and time of file creation	ontime1	45045.833768755	Sum of GTIs [s]
revision	3	Processing version of data	ontime2	45042.733838469	Sum of GTIs [s]
			ontime3	45036.492927939	Sum of GTIs [s]
			ontime6	45045.751708627	Sum of GTIs [s]
			l1events	1399371	Number of level 1 events

2.1.4 Events

	ccd 0	ccd 1	ccd 2	ccd 3	ccd 6
level 1 events	263864	265571	296307	284804	288825
rejected events	235919	233693	269141	257686	259211
rejected %	89%	87%	90%	90%	89%

	ccd 0	ccd 1	ccd 2	ccd 3	ccd 6
grade 0 events	9439	11514	9591	9530	10531
	3%	4%	3%	3%	3%
grade 1 events	141	142	158	143	141
	0%	0%	0%	0%	0%
grade 2 events	6690	6980	6305	5917	6311
	2%	2%	2%	2%	2%
grade 3 events	3300	3478	3116	3212	3281
	1%	1%	1%	1%	1%
grade 4 events	3014	3540	3130	3079	3312
	1%	1%	1%	1%	1%
grade 5 events	10219	11220	9579	11382	11281
	3%	4%	3%	3%	3%
grade 6 events	5509	6367	5026	5384	6190
	2%	2%	1%	1%	2%
grade 7 events	225552	222330	259402	246157	247778
	85%	83%	87%	86%	85%

2.2 Compared Parameters

Parameter	Planned	Actual
Instrument	ACIS	ACIS
Detector	ACIS-01236	ACIS-01236
Grating	NONE	NONE
Data mode	VFAINT	VFAINT
Observation mode	POINTING	POINTING
[deg] Pointing RA	214.888811	214.8440423491126
[deg] Pointing Dec	52.850024	52.84563623032339
[deg] Pointing Roll	158.768723	159.0131000199181
[deg] Roll angle	50.756000	50.756000
[deg] Roll tolerance	20.000000	20.000000
Roll constraint allows 180D rotation	Y	Y
[mm] SIM focus pos	-0.782348	-0.7809083437167272
[mm] SIM defocus	0	0.001439871863259334
[mm] SIM translation stage pos	-233.592463	-233.5874344608287
[mm] SIM translation stage offset	0	-0.005018542100998502
[s] Observation start time (MET)	229295997.184000	229295039.14077
Observation start date	2005-04-07T21:18:53	2005-04-07T21:03:59
[s] Observation end time (MET)	229340997.184000	229341438.33038
Observation end date	2005-04-08T09:48:53	2005-04-08T09:57:18
Read mode	TIMED	TIMED

Parameter	Planned	Actual
Obspar format version number	7	7
Obspar file type	PREDICTED	ACTUAL
Obspar update status	NONE	UPDATED
Number of optional ACIS chips dropped	0	0
On-chip summing requested	N	N
Subarray requested	NONE	NONE
Alternating exposures requested	N	N
[s] Primary exposure time	0.000000	3.1

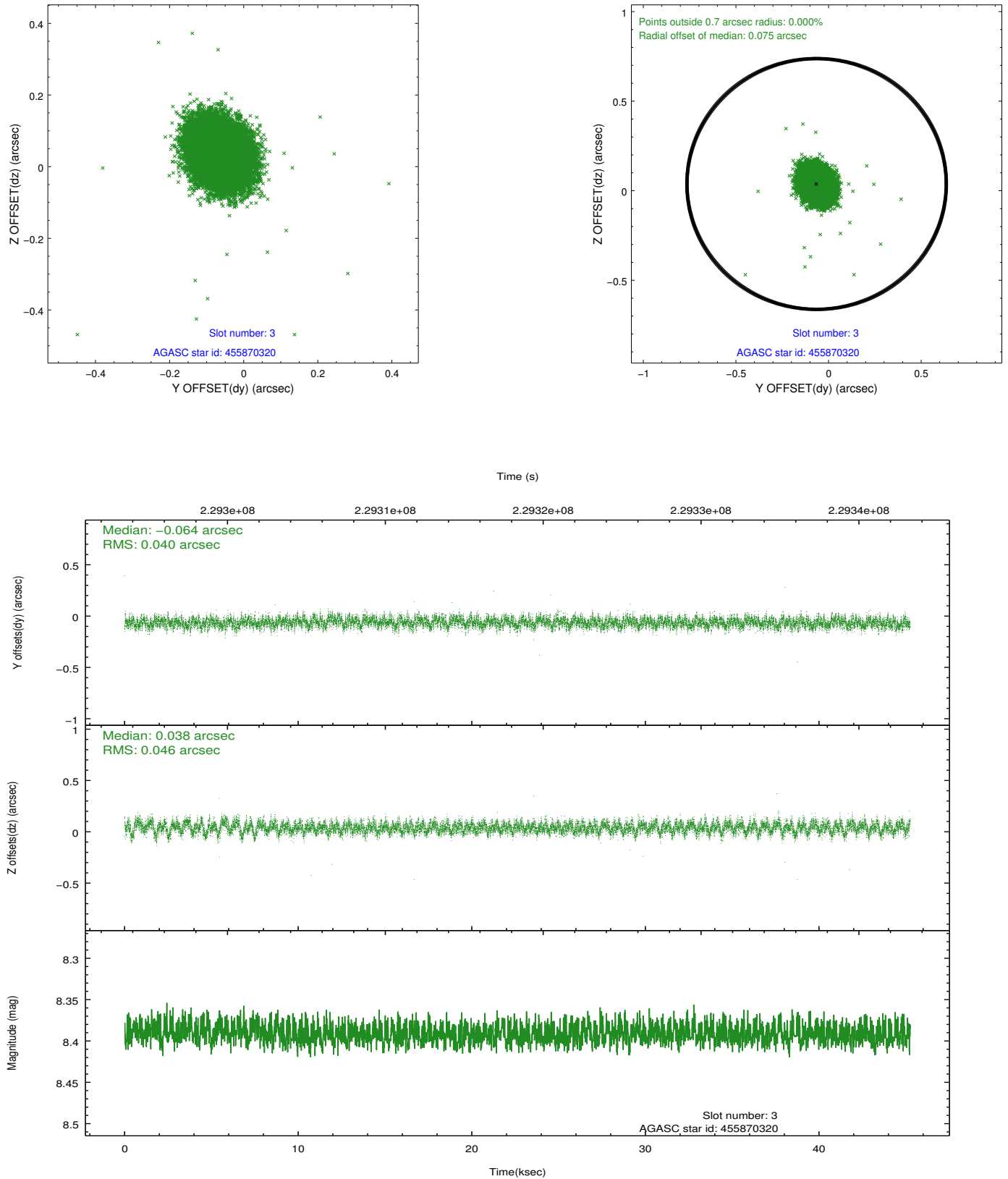
2.3 Aspect

Slot Statistics

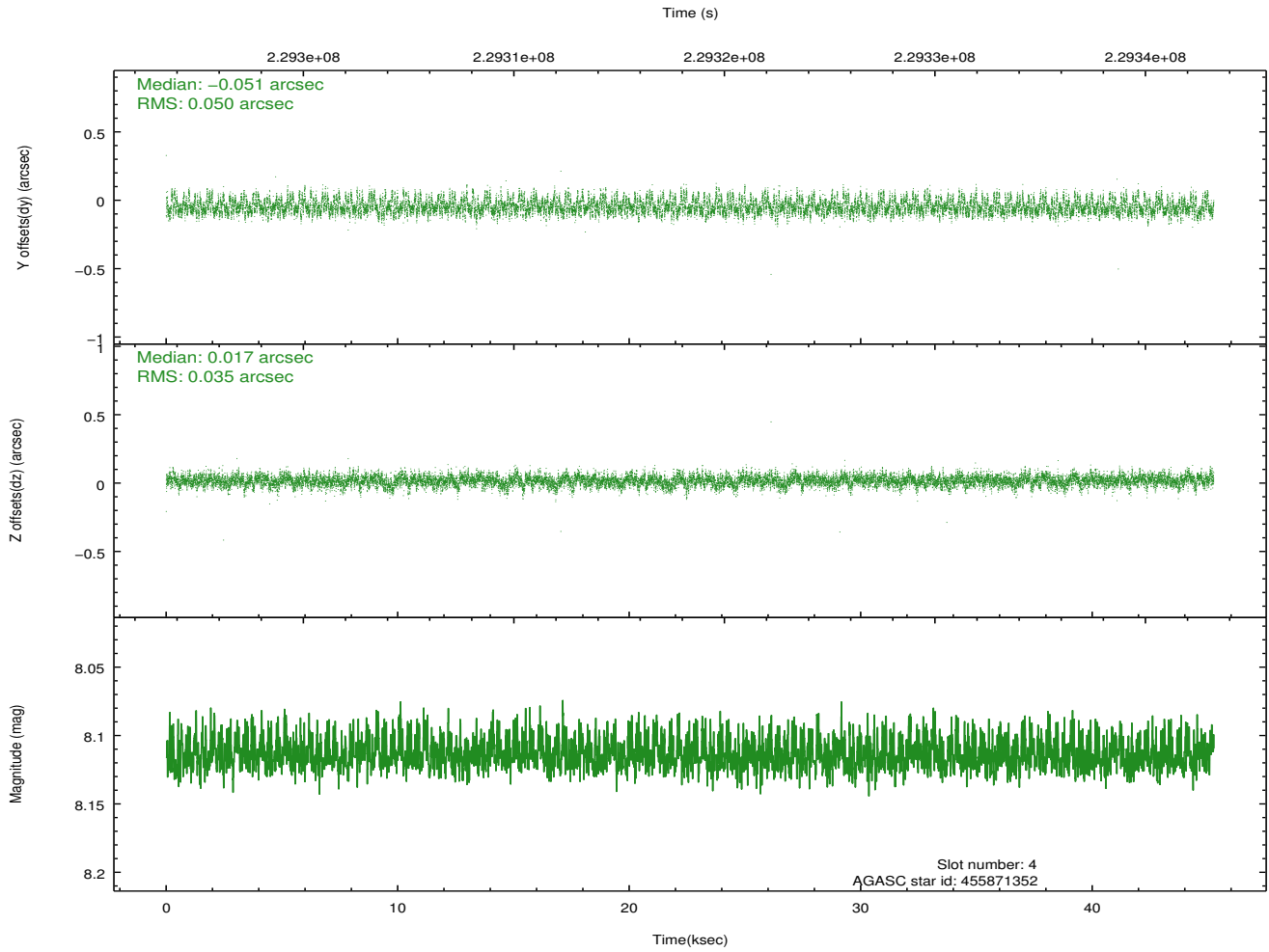
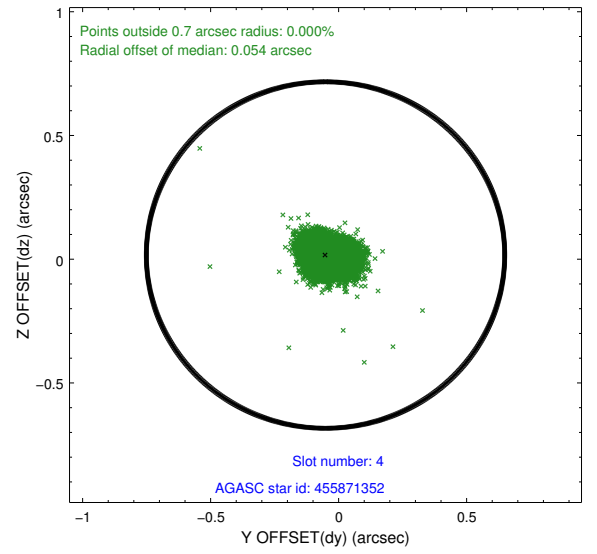
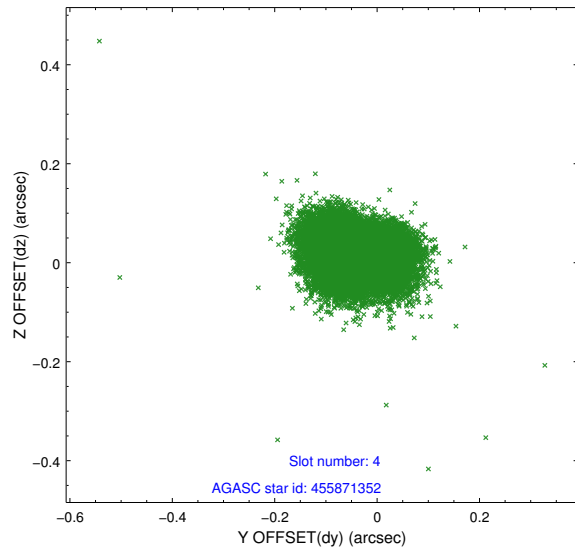
slot	status	id	mag	n_pts	med_dy	med_dz	dr1	dr2	ra	dec	mean_y	mean_z
0	FID	ACIS-I-1	7.24	11037	0.008	0.019	0.009	0.015	0.000000	0.000000	932.05	-833.15
1	FID	ACIS-I-5	7.23	11037	-0.169	0.027	0.010	0.018	0.000000	0.000000	-1816.24	1064.34
2	FID	ACIS-I-6	7.25	11034	0.070	0.024	0.008	0.014	0.000000	0.000000	397.66	1708.84
3	GUIDE	455870320	8.39	22067	-0.064	0.038	0.064	0.103	214.874440	52.401638	-555.24	1516.20
4	GUIDE	455871352	8.11	22064	-0.051	0.017	0.065	0.107	215.099961	52.172669	-1317.50	2103.59
5	GUIDE	505806936	7.00	22073	0.050	-0.021	0.065	0.105	213.820815	52.535927	1776.68	1885.14
6	GUIDE	505812088	8.17	22004	0.048	0.086	0.063	0.101	214.186617	53.263562	1951.63	-846.54
7	GUIDE	505812376	7.60	22070	0.011	-0.114	0.049	0.081	214.039537	52.937930	1836.33	362.31

2.4 Star Slots

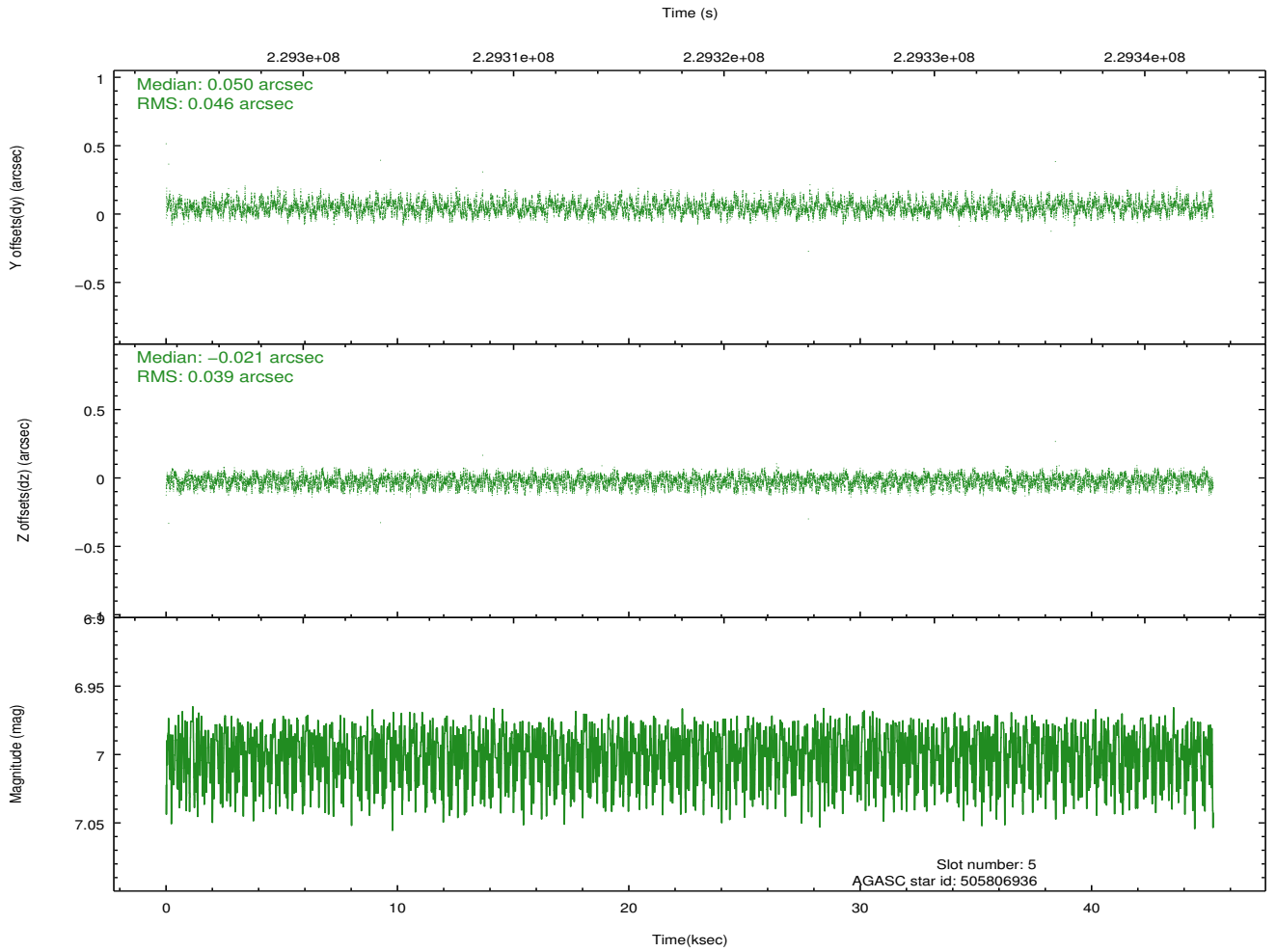
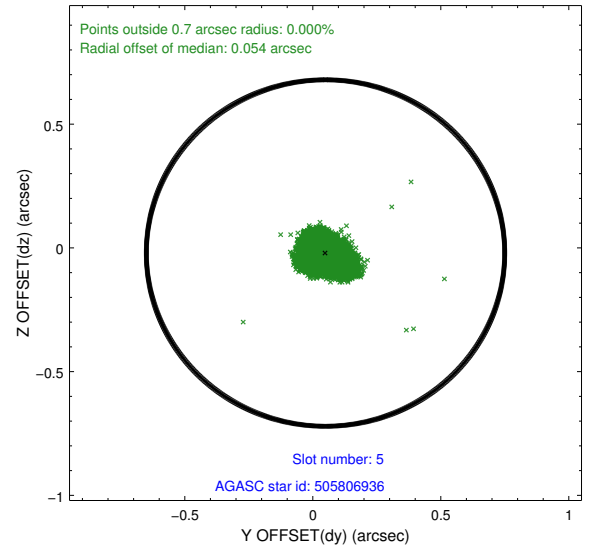
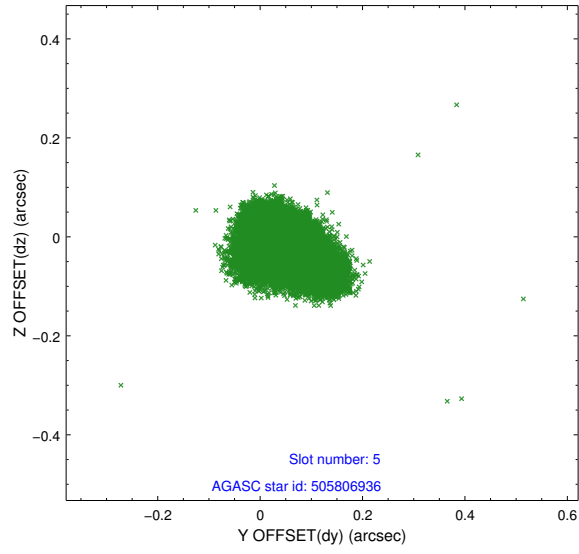
2.4.1 Slot 3



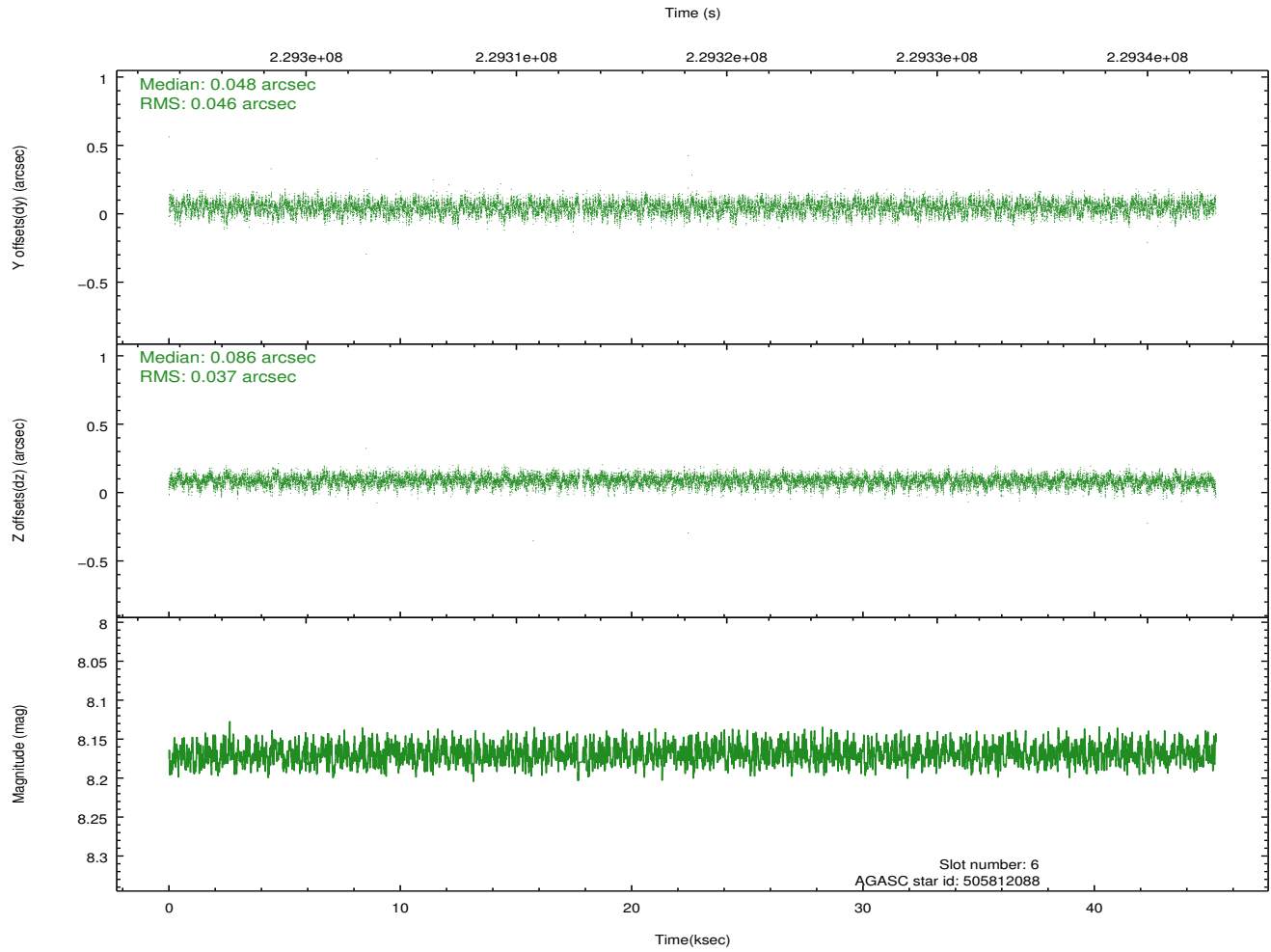
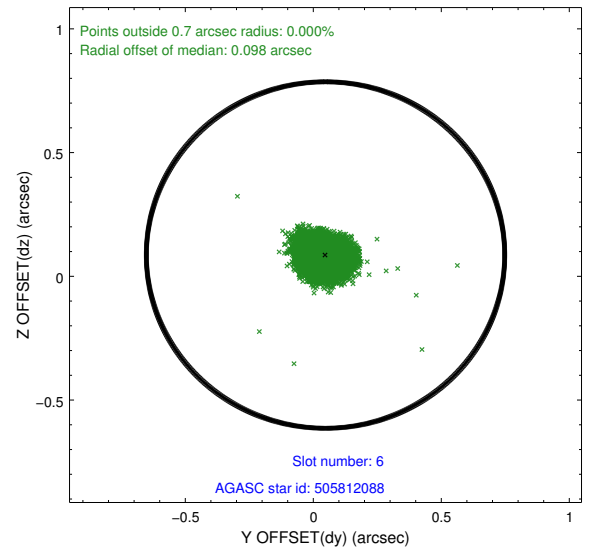
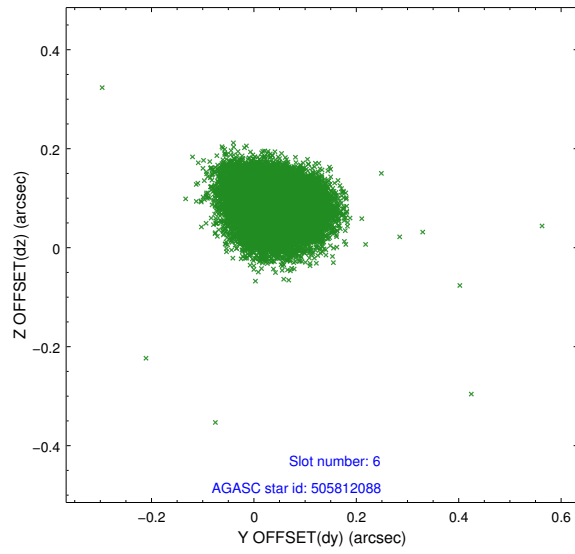
2.4.2 Slot 4



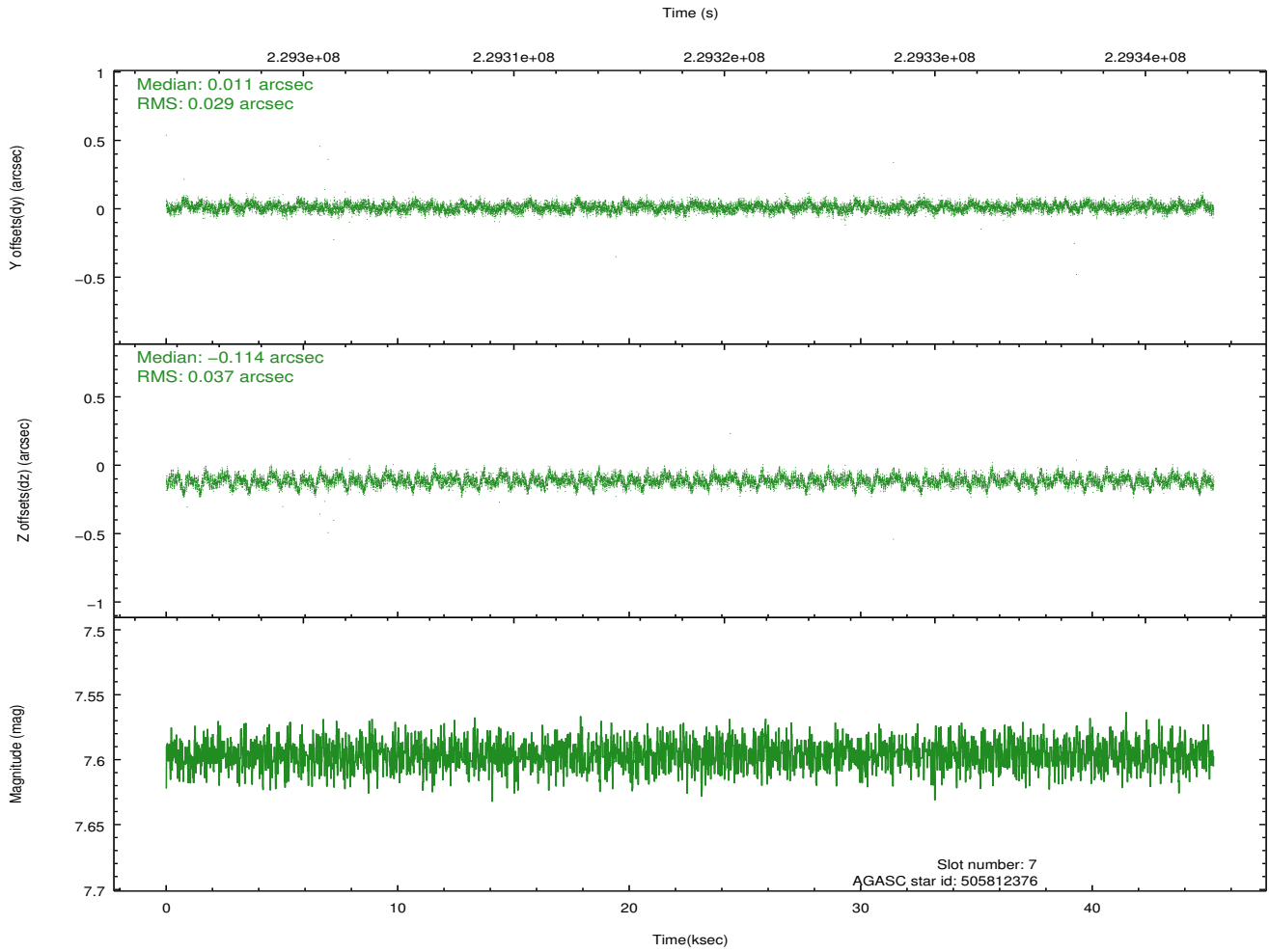
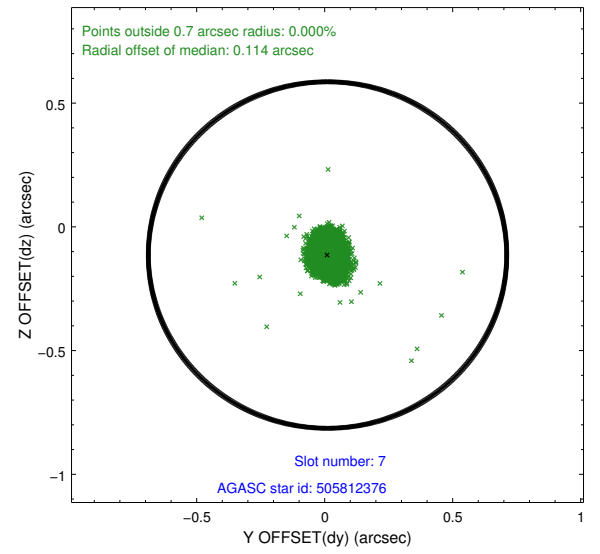
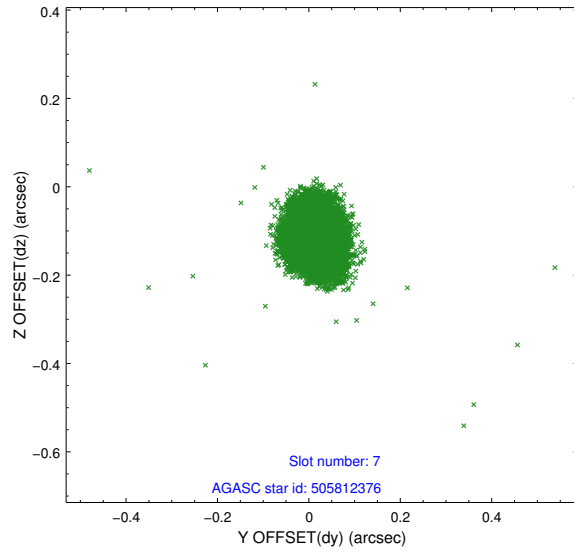
2.4.3 Slot 5



2.4.4 Slot 6

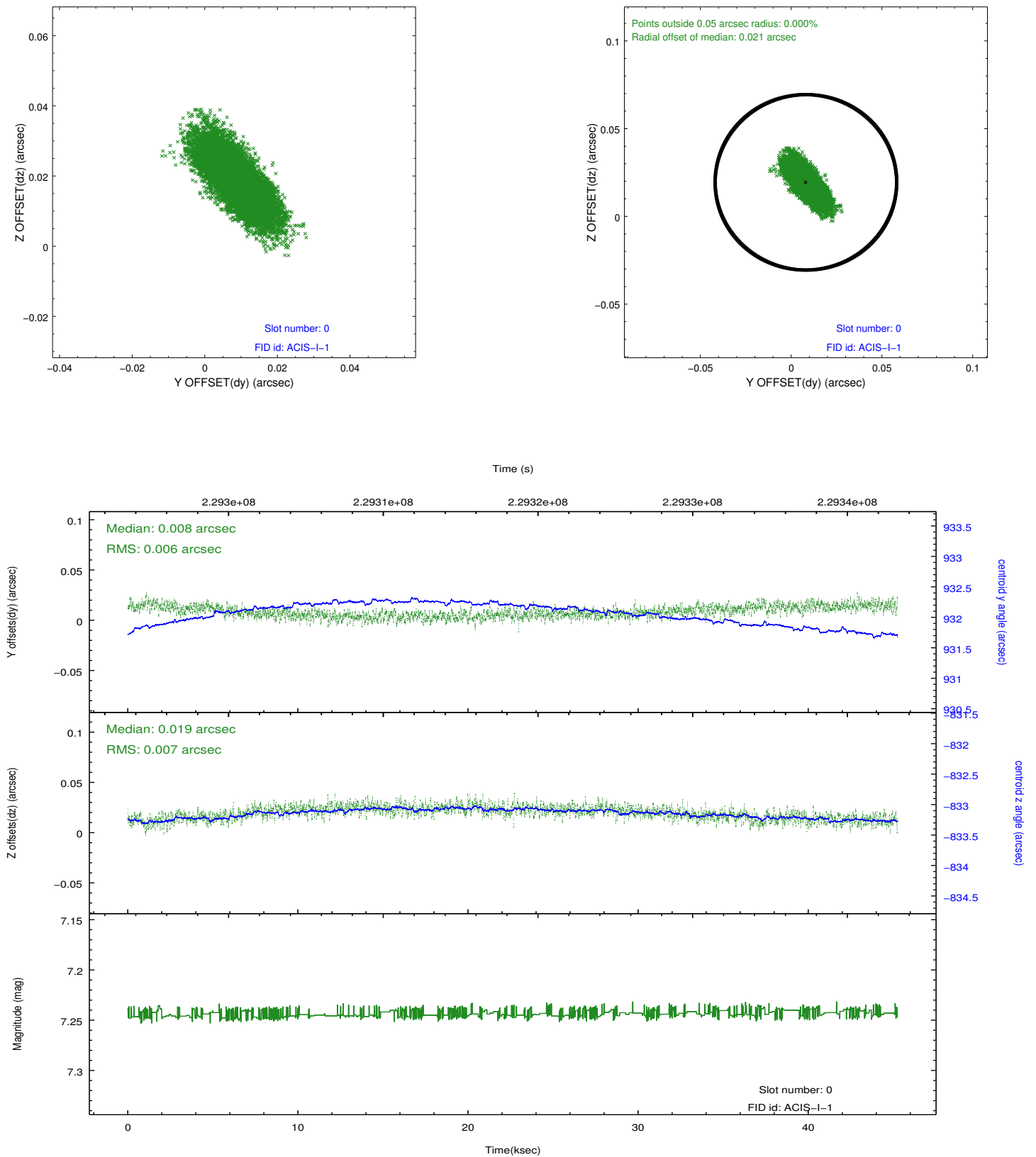


2.4.5 Slot 7

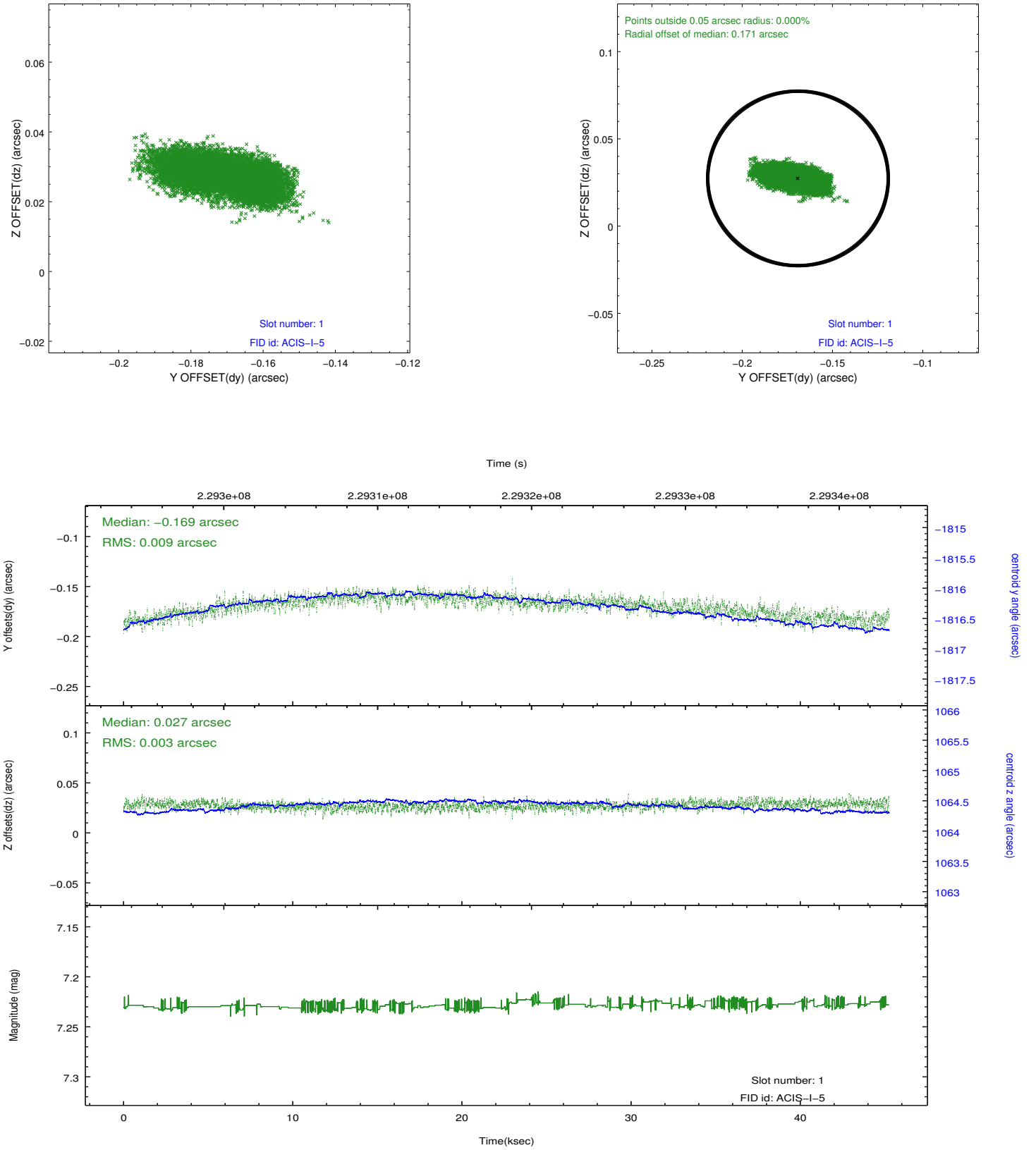


2.5 FID Slots

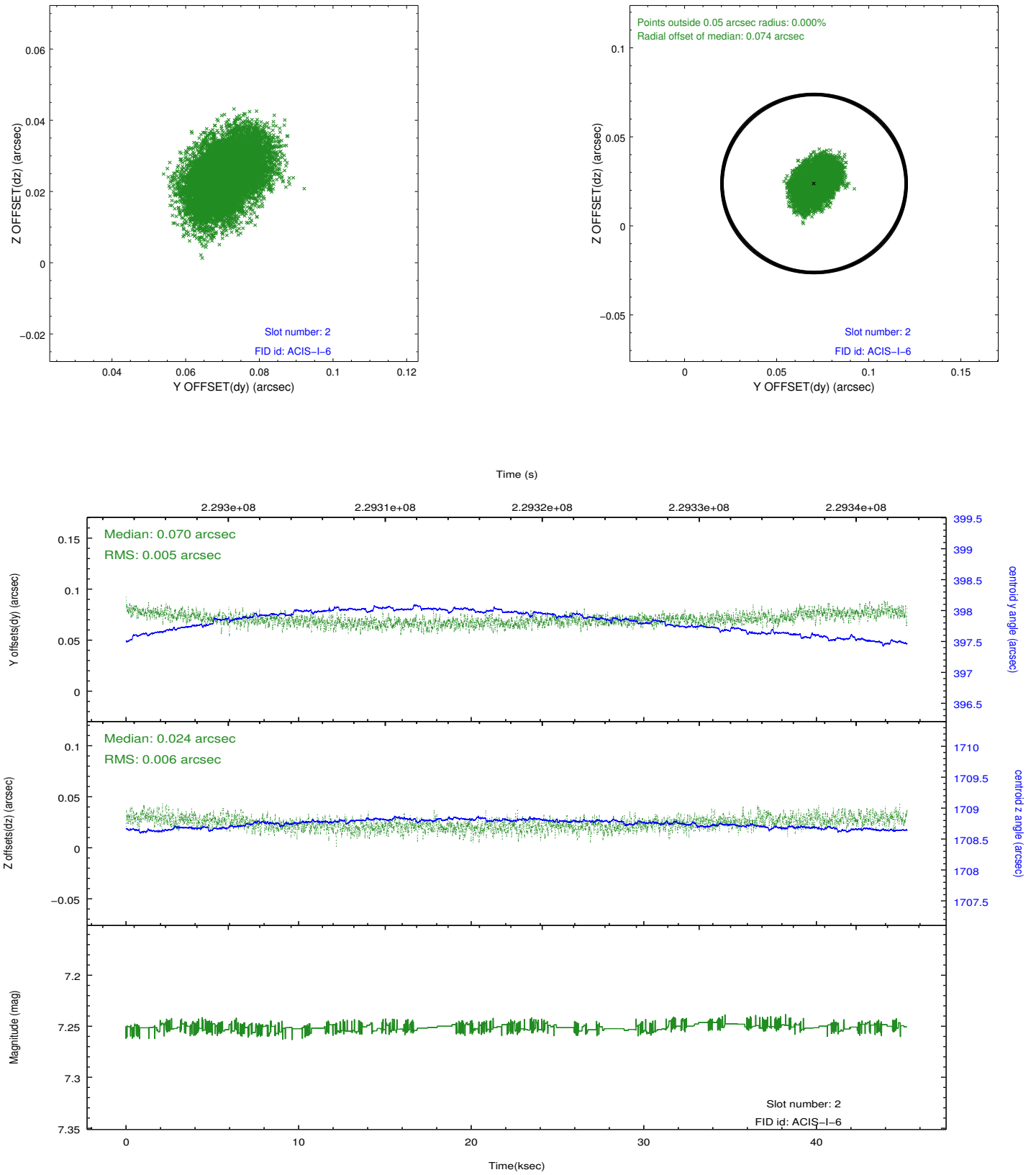
2.5.1 Slot 0



2.5.2 Slot 1



2.5.3 Slot 2



A Summary

A.1 Status

V&V Scientist	Jen Lauer
V&V Date (YYYY-MM-DD)	2013.01.14
V&V Edition	1
V&V Disposition and Status	OK
V&V Charge Time	45.03663

A.2 Comments

Roll constraint satisfied.