

# V&V Reference Report

## L2 ASCDS Version : 8.4.4

Observation 57908 - L2 Version 2  
Chandra X-Ray Center

L2 Processing Date : May 11 2012

## Contents

<b>1</b>	<b>Front</b>	<b>2</b>
<b>2</b>	<b>OBI</b>	<b>3</b>
2.1	OBI . . . . .	3
2.1.1	Images . . . . .	3
2.1.2	Bias . . . . .	3
2.1.3	Parameters . . . . .	4
2.1.4	Events . . . . .	4
2.2	Compared Parameters . . . . .	5
2.3	Star Slots . . . . .	6
2.4	FID Slots . . . . .	6
<b>A</b>	<b>Summary</b>	<b>7</b>
A.1	Status . . . . .	7
A.2	Comments . . . . .	7

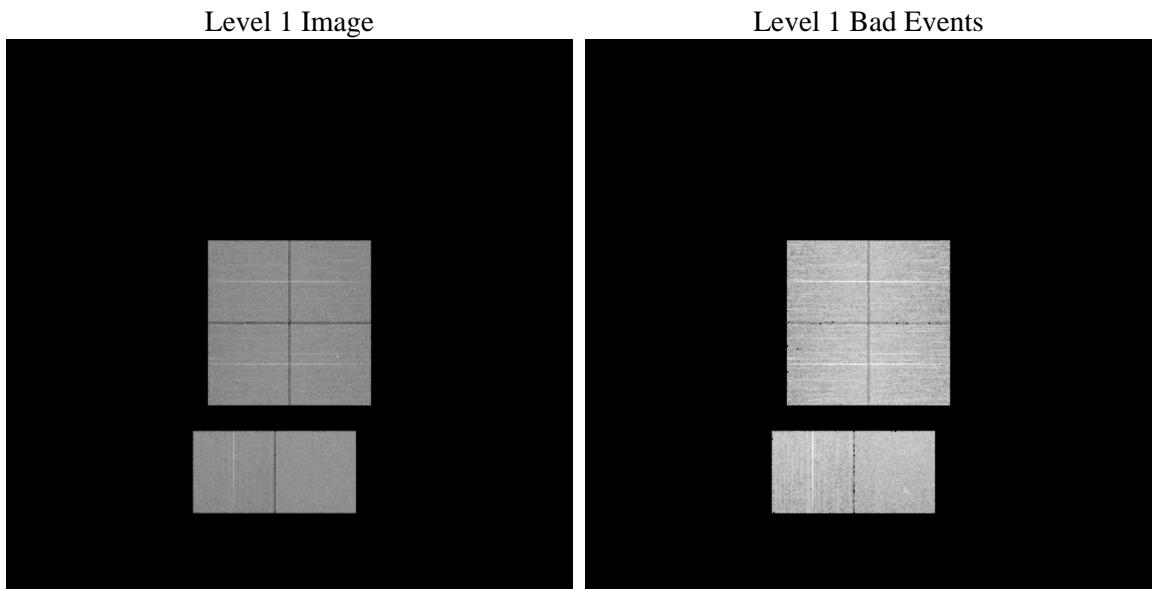
# 1 Front

seq_num	&#160	Sequence number
obs_id	57908	Observation id
title	ACIS-012367 diagnostics	Proposal title
observer	CHANDRA engineering request/realtime commanding	Principal investig
object	&#160	Source name
dtcycle	0	&#160
cycle	P	events from which exps? Prim/Second/Both
ra_targ	0.0	Observer's specified target RA [deg]
dec_targ	0.0	Observer's specified target Dec [deg]
ra_nom	203.98389696217	Nominal RA [deg]
dec_nom	1.773766317113	Nominal Dec [deg]
roll_nom	91.27339326442	Nominal Roll [deg]
revision	2	Processing version of data
ontime	8271.815790832	Sum of GTIs [s]
livetime	8167.073078599	Livetime [s]
ontime0	8271.7747508287	Sum of GTIs [s]
ontime1	8271.7337108254	Sum of GTIs [s]
ontime2	8271.6926708221	Sum of GTIs [s]
ontime3	8271.8568308353	Sum of GTIs [s]
ontime6	8271.6516308188	Sum of GTIs [s]
ontime7	8271.815790832	Sum of GTIs [s]
l2events	616845	Number of level 2 events

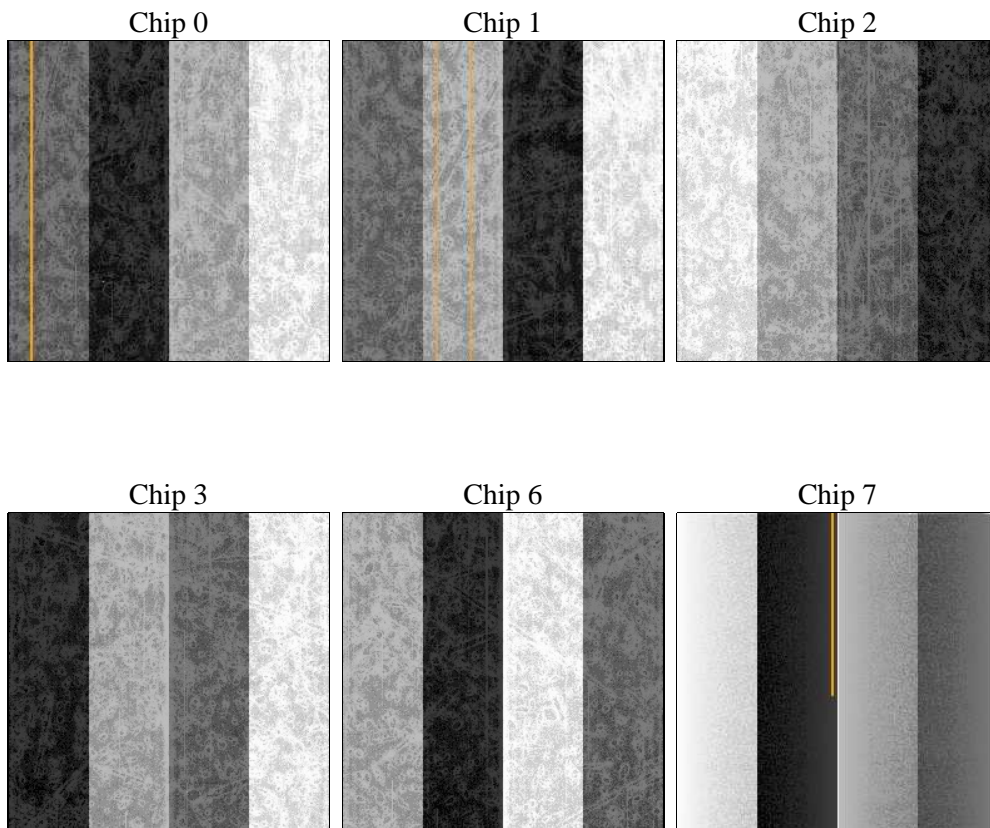
## 2 OBI

### 2.1 OBI

#### 2.1.1 Images



#### 2.1.2 Bias



### 2.1.3 Parameters

obi_num	0	Obi number	sched_exp_time	0.0	[s] Scheduled observation exposure time
ascdsver	8.4.4	Processing system revision	ontime	8271.815790832	Sum of GTIs [s]
caldsver	4.4.9	&#160	ontime0	8271.7747508287	Sum of GTIs [s]
date	2012-05-11T15:37:35	Date and time of file creation	ontime1	8271.7337108254	Sum of GTIs [s]
revision	2	Processing version of data	ontime2	8271.6926708221	Sum of GTIs [s]
			ontime3	8271.8568308353	Sum of GTIs [s]
			ontime6	8271.6516308188	Sum of GTIs [s]
			ontime7	8271.815790832	Sum of GTIs [s]
			l1events	1074684	Number of level 1 events

### 2.1.4 Events

	ccd 0	ccd 1	ccd 2	ccd 3	ccd 6	ccd 7		ccd 0	ccd 1	ccd 2	ccd 3	ccd 6	ccd 7
level 1 events	169038	167662	174698	181730	179284	202272	grade 0 events	54584	54134	56211	58746	56308	27462
rejected events	67640	66047	72497	76623	73087	65412		32%	32%	32%	32%	31%	13%
rejected %	40%	39%	41%	42%	40%	32%	grade 1 events	389	342	410	449	350	158
								0%	0%	0%	0%	0%	0%
							grade 2 events	18219	18539	17445	17669	18798	29994
								10%	11%	9%	9%	10%	14%
							grade 3 events	6781	6783	6872	6876	6761	12907
								4%	4%	3%	3%	3%	6%
							grade 4 events	6708	6583	6951	6981	6826	12910
								3%	3%	3%	3%	3%	6%
							grade 5 events	3955	4050	3659	4329	4335	10625
								2%	2%	2%	2%	2%	5%
							grade 6 events	15141	15627	14772	14878	17563	53638
								8%	9%	8%	8%	9%	26%
							grade 7 events	63261	61604	68378	71802	68343	54578
								37%	36%	39%	39%	38%	26%

## 2.2 Compared Parameters

Parameter	Planned	Actual
Instrument	ACIS	ACIS
Detector	ACIS-012367	ACIS-012367
Grating	NONE	NONE
Data mode	FAINT	FAINT
Observation mode	SECONDARY	SECONDARY
[deg] Pointing RA	0	203.9838969621705
[deg] Pointing Dec	0	1.77376631711305
[deg] Pointing Roll	0.0	91.27339326442014
[mm] SIM focus pos	-0.782348	-0.6828225247311905
[mm] SIM defocus	0	0.8505141146731063
[mm] SIM translation stage pos	-233.592463	250.466033080201
[mm] SIM translation stage offset	0	-0.01005468664627074
[s] Observation start time (MET)	322160058.886934	322160057.86195
Observation start date	2008-03-17T16:54:19	2008-03-17T16:54:17
[s] Observation end time (MET)	322185116.038152	322185115.01317
Observation end date	2008-03-17T23:51:56	2008-03-17T23:51:55
Read mode	TIMED	TIMED

Parameter	Planned	Actual
Obspar format version number	7	7
Obspar file type	PREDICTED	ACTUAL
Obspar update status	NONE	UPDATED
On-chip summing requested	N	N
Subarray requested	NONE	NONE
Alternating exposures requested	N	N
[s] Primary exposure time	3.2	3.2

## **2.3 Star Slots**

## **2.4 FID Slots**

## A Summary

### A.1 Status

V&V Scientist	Beth Sundheim
V&V Date (YYYY-MM-DD)	2012.05.14
V&V Edition	1
V&V Disposition and Status	OK
V&V Charge Time	8.271815790832

### A.2 Comments