

# V&V Reference Report

## L2 ASCDS Version : 8.4.4

Observation 57678 - L2 Version 2  
Chandra X-Ray Center

L2 Processing Date : May 18 2012

## Contents

<b>1</b>	<b>Front</b>	<b>2</b>
<b>2</b>	<b>OBI</b>	<b>3</b>
2.1	OBI . . . . .	3
2.1.1	Images . . . . .	3
2.1.2	Bias . . . . .	3
2.1.3	Parameters . . . . .	4
2.1.4	Events . . . . .	4
2.2	Compared Parameters . . . . .	5
2.3	Star Slots . . . . .	6
2.4	FID Slots . . . . .	6
<b>A</b>	<b>Summary</b>	<b>7</b>
A.1	Status . . . . .	7
A.2	Comments . . . . .	7

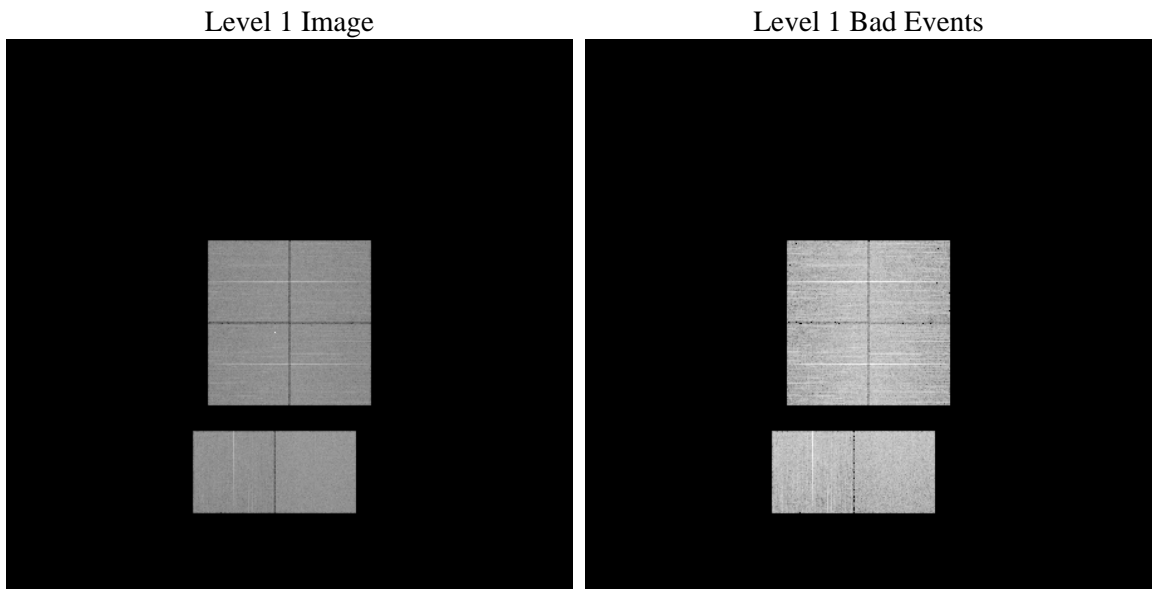
# 1 Front

seq_num	&#160	Sequence number
obs_id	57678	Observation id
title	ACIS-012367 diagnostics	Proposal title
observer	CHANDRA engineering request/realtime commanding	Principal investig
object	&#160	Source name
dtcycle	0	&#160
cycle	P	events from which exps? Prim/Second/Both
ra_targ	0.0	Observer's specified target RA [deg]
dec_targ	0.0	Observer's specified target Dec [deg]
ra_nom	327.99358881152	Nominal RA [deg]
dec_nom	-34.970875460895	Nominal Dec [deg]
roll_nom	59.805419281001	Nominal Roll [deg]
revision	2	Processing version of data
ontime	7797.0095922947	Sum of GTIs [s]
livetime	7698.2791620415	Livetime [s]
ontime0	7796.9685522914	Sum of GTIs [s]
ontime1	7796.9275122881	Sum of GTIs [s]
ontime2	7796.8864722848	Sum of GTIs [s]
ontime3	7797.050632298	Sum of GTIs [s]
ontime6	7796.8454322815	Sum of GTIs [s]
ontime7	7797.0095922947	Sum of GTIs [s]
l2events	540288	Number of level 2 events

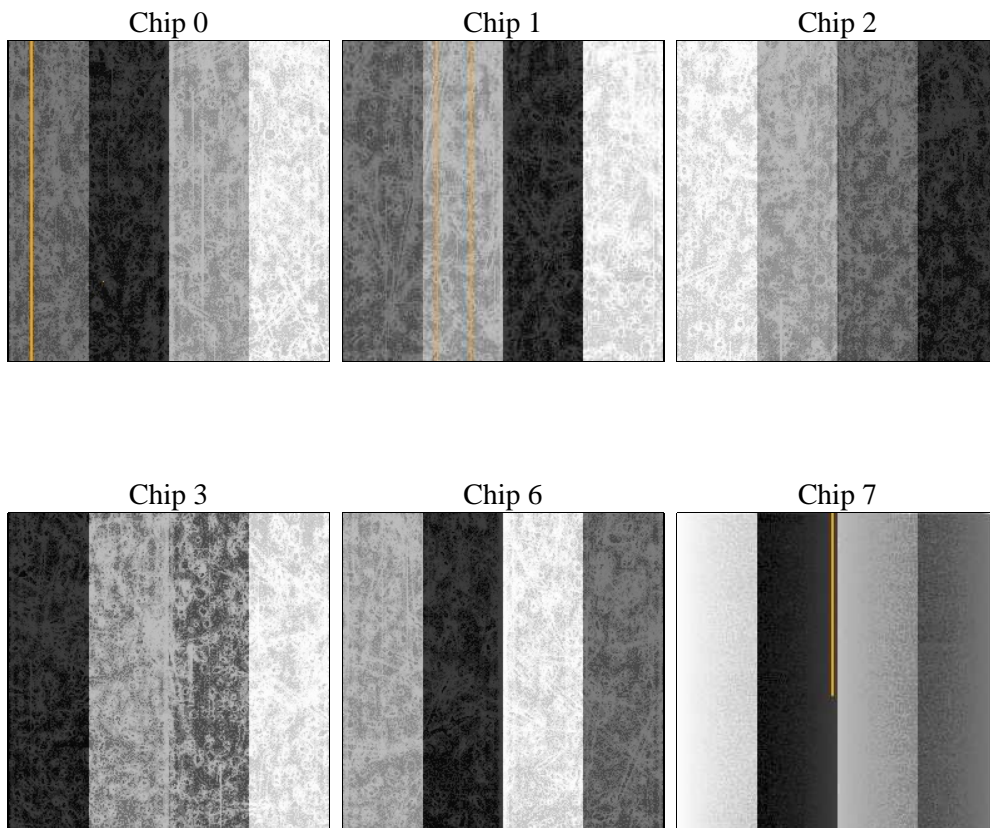
## 2 OBI

### 2.1 OBI

#### 2.1.1 Images



#### 2.1.2 Bias



### 2.1.3 Parameters

obi_num	0	Obi number	sched_exp_time	0.0	[s] Scheduled observation exposure time
ascdsver	8.4.4	Processing system revision	ontime	7797.0095922947	Sum of GTIs [s]
caldsver	4.4.9	&#160	ontime0	7796.9685522914	Sum of GTIs [s]
date	2012-05-18T15:06:01	Date and time of file creation	ontime1	7796.9275122881	Sum of GTIs [s]
revision	2	Processing version of data	ontime2	7796.8864722848	Sum of GTIs [s]
			ontime3	7797.050632298	Sum of GTIs [s]
			ontime6	7796.8454322815	Sum of GTIs [s]
			ontime7	7797.0095922947	Sum of GTIs [s]
			l1events	967081	Number of level 1 events

### 2.1.4 Events

	ccd 0	ccd 1	ccd 2	ccd 3	ccd 6	ccd 7		ccd 0	ccd 1	ccd 2	ccd 3	ccd 6	ccd 7
level 1 events	153246	152709	158243	158665	160591	183627	grade 0 events	47710	47378	50883	49366	48693	24043
rejected events	64966	63472	67187	68638	68507	62222		31%	31%	32%	31%	30%	13%
rejected %	42%	41%	42%	43%	42%	33%	grade 1 events	316	297	352	399	290	149
								0%	0%	0%	0%	0%	0%
							grade 2 events	15944	16287	15293	15768	16328	26472
								10%	10%	9%	9%	10%	14%
							grade 3 events	5827	5965	6092	6152	5955	11524
								3%	3%	3%	3%	3%	6%
							grade 4 events	5772	5744	6035	6039	5993	11517
								3%	3%	3%	3%	3%	6%
							grade 5 events	3609	3778	3488	4060	4223	10184
								2%	2%	2%	2%	2%	5%
							grade 6 events	13027	13863	12753	12702	15115	47849
								8%	9%	8%	8%	9%	26%
							grade 7 events	61041	59397	63347	64179	63994	51889
								39%	38%	40%	40%	39%	28%

## 2.2 Compared Parameters

Parameter	Planned	Actual
Instrument	ACIS	ACIS
Detector	ACIS-012367	ACIS-012367
Grating	NONE	NONE
Data mode	FAINT	FAINT
Observation mode	SECONDARY	SECONDARY
[deg] Pointing RA	0	327.9935888115185
[deg] Pointing Dec	0	-34.97087546089536
[deg] Pointing Roll	0.0	59.80541928100114
[mm] SIM focus pos	-1.429586	-0.7809083437167272
[mm] SIM defocus	0.1037507710433287	0.7524282956875696
[mm] SIM translation stage pos	250.455976	250.4635187648994
[mm] SIM translation stage offset	0	-0.007540371344731511
[s] Observation start time (MET)	333321571.431621	333321570.40663
Observation start date	2008-07-24T21:19:31	2008-07-24T21:19:30
[s] Observation end time (MET)	333336813.182367	333336812.15737
Observation end date	2008-07-25T01:33:33	2008-07-25T01:33:32
Read mode	TIMED	TIMED

Parameter	Planned	Actual
Obspar format version number	7	7
Obspar file type	PREDICTED	ACTUAL
Obspar update status	NONE	UPDATED
On-chip summing requested	N	N
Subarray requested	NONE	NONE
Alternating exposures requested	N	N
[s] Primary exposure time	3.2	3.2

## 2.3 Star Slots

## 2.4 FID Slots

## A Summary

### A.1 Status

V&V Scientist	Beth Sundheim
V&V Date (YYYY-MM-DD)	2012.05.25
V&V Edition	1
V&V Disposition and Status	OK
V&V Charge Time	7.7970095922947

### A.2 Comments