

# V&V Reference Report

## L2 ASCDS Version : 8.4.3

Observation 55558 - L2 Version 2  
Chandra X-Ray Center

L2 Processing Date : Feb 6 2012

## Contents

<b>1</b>	<b>Front</b>	<b>2</b>
<b>2</b>	<b>OBI</b>	<b>3</b>
2.1	OBI . . . . .	3
2.1.1	Images . . . . .	3
2.1.2	Bias . . . . .	3
2.1.3	Parameters . . . . .	4
2.1.4	Events . . . . .	4
2.2	Compared Parameters . . . . .	5
2.3	Star Slots . . . . .	6
2.4	FID Slots . . . . .	6
<b>A</b>	<b>Summary</b>	<b>7</b>
A.1	Status . . . . .	7
A.2	Comments . . . . .	7

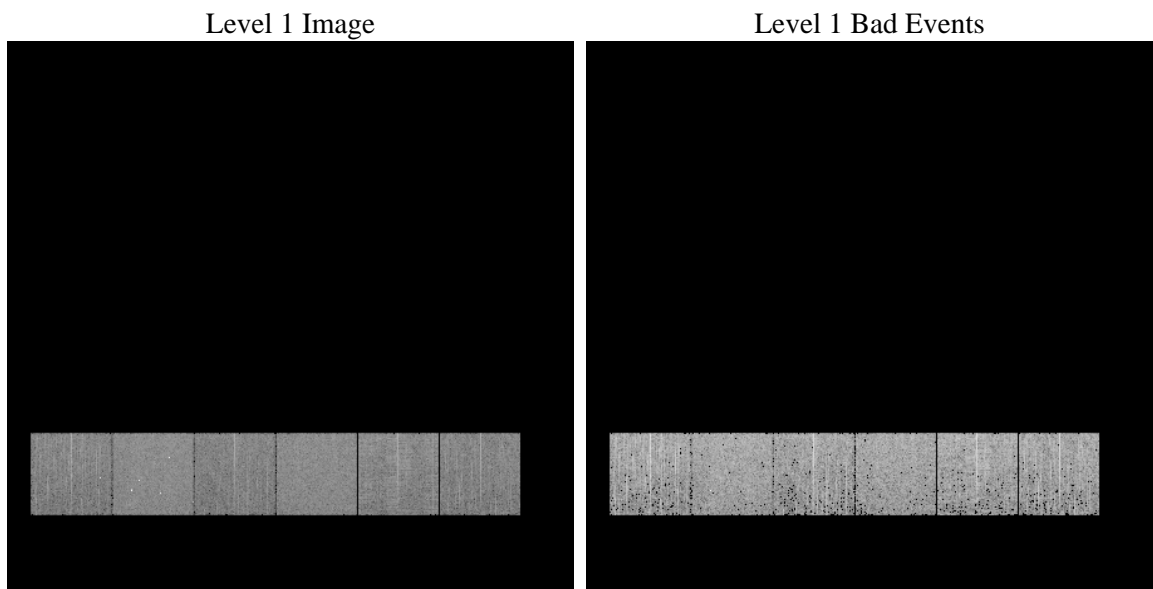
# 1 Front

seq_num	&#160	Sequence number
obs_id	55558	Observation id
title	ACIS-456789 diagnostics	Proposal title
observer	CHANDRA engineering request/realtime commanding	Principal investig
object	&#160	Source name
dtcycle	0	&#160
cycle	P	events from which exps? Prim/Second/Both
ra_targ	0.0	Observer's specified target RA [deg]
dec_targ	0.0	Observer's specified target Dec [deg]
ra_nom	177.02972168995	Nominal RA [deg]
dec_nom	-25.503546910698	Nominal Dec [deg]
roll_nom	337.76454147111	Nominal Roll [deg]
revision	2	Processing version of data
ontime	3282.9183177352	Sum of GTIs [s]
livetime	3241.3480292599	Livetime [s]
ontime4	3282.7951977253	Sum of GTIs [s]
ontime5	3282.8772777319	Sum of GTIs [s]
ontime6	3282.8362377286	Sum of GTIs [s]
ontime7	3282.9183177352	Sum of GTIs [s]
ontime8	3282.754157722	Sum of GTIs [s]
ontime9	3282.9593577385	Sum of GTIs [s]
l2events	143468	Number of level 2 events

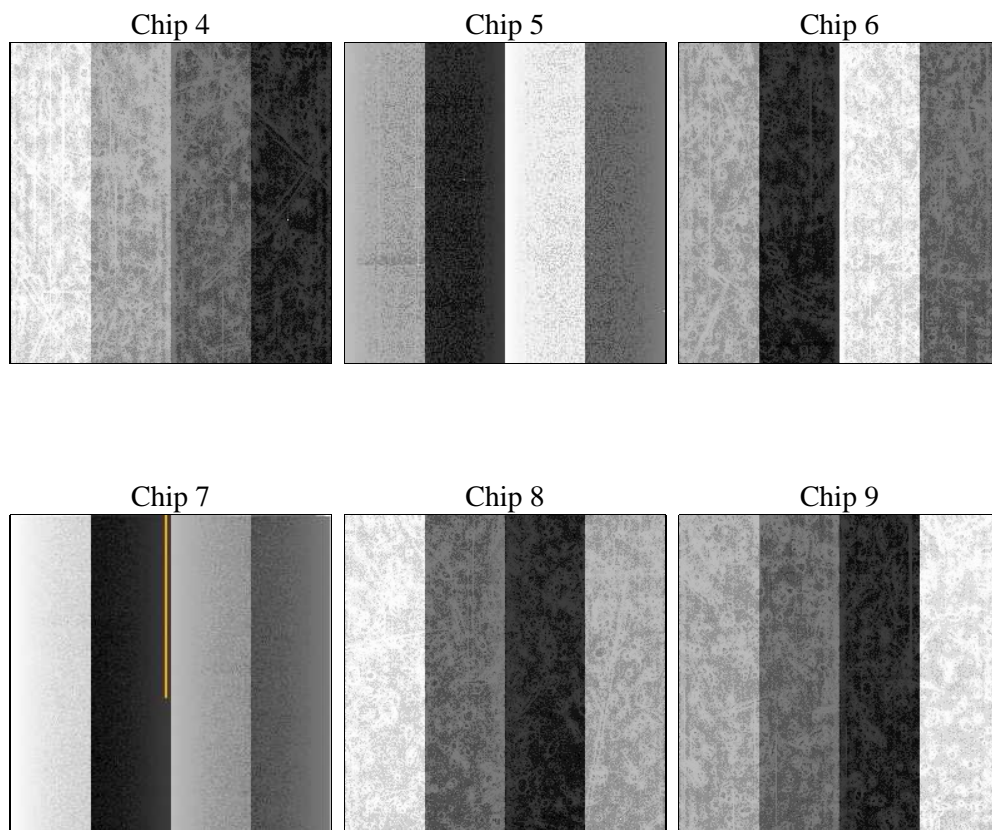
## 2 OBI

### 2.1 OBI

#### 2.1.1 Images



#### 2.1.2 Bias



### 2.1.3 Parameters

obi_num	0	Obi number	sched_exp_time	0.0	[s] Scheduled observation exposure time
ascdsver	8.4.3	Processing system revision	ontime	3282.9183177352	Sum of GTIs [s]
caldsver	4.4.7	&#160	ontime4	3282.7951977253	Sum of GTIs [s]
date	2012-02-07T00:30:01	Date and time of file creation	ontime5	3282.8772777319	Sum of GTIs [s]
revision	2	Processing version of data	ontime6	3282.8362377286	Sum of GTIs [s]
			ontime7	3282.9183177352	Sum of GTIs [s]
			ontime8	3282.754157722	Sum of GTIs [s]
			ontime9	3282.9593577385	Sum of GTIs [s]
			l1events	315547	Number of level 1 events

### 2.1.4 Events

	ccd 4	ccd 5	ccd 6	ccd 7	ccd 8	ccd 9		ccd 4	ccd 5	ccd 6	ccd 7	ccd 8	ccd 9
level 1 events	48033	62178	45127	58016	54720	47473	grade 0 events	12024	6574	11042	5691	12743	10970
rejected events	27224	25668	23688	24653	28168	26522		25%	10%	24%	9%	23%	23%
rejected %	56%	41%	52%	42%	51%	55%	grade 1 events	94	211	73	46	74	72
								0%	0%	0%	0%	0%	0%
							grade 2 events	3261	12251	4012	7245	5151	3704
								6%	19%	8%	12%	9%	7%
							grade 3 events	1408	1465	1448	3126	1978	1420
								2%	2%	3%	5%	3%	2%
							grade 4 events	1423	1535	1398	2999	1905	1519
								2%	2%	3%	5%	3%	3%
							grade 5 events	1545	3380	1567	3965	2038	1832
								3%	5%	3%	6%	3%	3%
							grade 6 events	2693	14685	3539	14302	4775	3338
								5%	23%	7%	24%	8%	7%
							grade 7 events	25585	22077	22048	20642	26056	24618
								53%	35%	48%	35%	47%	51%

## 2.2 Compared Parameters

Parameter	Planned	Actual	Parameter	Planned	Actual
Instrument	ACIS	ACIS	Obspar format version number	7	7
Detector	ACIS-456789	ACIS-456789	Obspar file type	PREDICTED	ACTUAL
Grating	NONE	NONE	Obspar update status	NONE	UPDATED
Data mode	FAINT	FAINT	Number of optional ACIS chips dropped	0	0
Observation mode	SECONDARY	SECONDARY	On-chip summing requested	N	N
[deg] Pointing RA	0	177.029721689952	Subarray requested	NONE	NONE
[deg] Pointing Dec	0	-25.50354691069799	Alternating exposures requested	N	N
[deg] Pointing Roll	0.0	337.7645414711054	[s] Primary exposure time	3.2	3.2
[mm] SIM focus pos	-1.429586	-1.428180813131781			
[mm] SIM defocus	0.1037507710433287	0.1051558262725154			
[mm] SIM translation stage pos	250.455976	250.466033080201			
[mm] SIM translation stage offset	0	-0.01005468664627074			
[s] Observation start time (MET)	417639944.543674	417639943.51867			
Observation start date	2011-03-27T19:05:45	2011-03-27T19:05:43			
[s] Observation end time (MET)	417645112.593942	417645111.56894			
Observation end date	2011-03-27T20:31:53	2011-03-27T20:31:51			
Read mode	TIMED	TIMED			

## **2.3 Star Slots**

## **2.4 FID Slots**

## A Summary

### A.1 Status

V&V Scientist	Beth Sundheim
V&V Date (YYYY-MM-DD)	2012.02.09
V&V Edition	1
V&V Disposition and Status	OK
V&V Charge Time	3.2829183177352

### A.2 Comments