

V&V Reference Report

L2 ASCDS Version : 8.4.3

Observation 55168 - L2 Version 2
Chandra X-Ray Center

L2 Processing Date : Feb 23 2012

Contents

1	Front	2
2	OBI	3
2.1	OBI	3
2.1.1	Images	3
2.1.2	Bias	3
2.1.3	Parameters	4
2.1.4	Events	4
2.2	Compared Parameters	5
2.3	Star Slots	6
2.4	FID Slots	6
A	Summary	7
A.1	Status	7
A.2	Comments	7

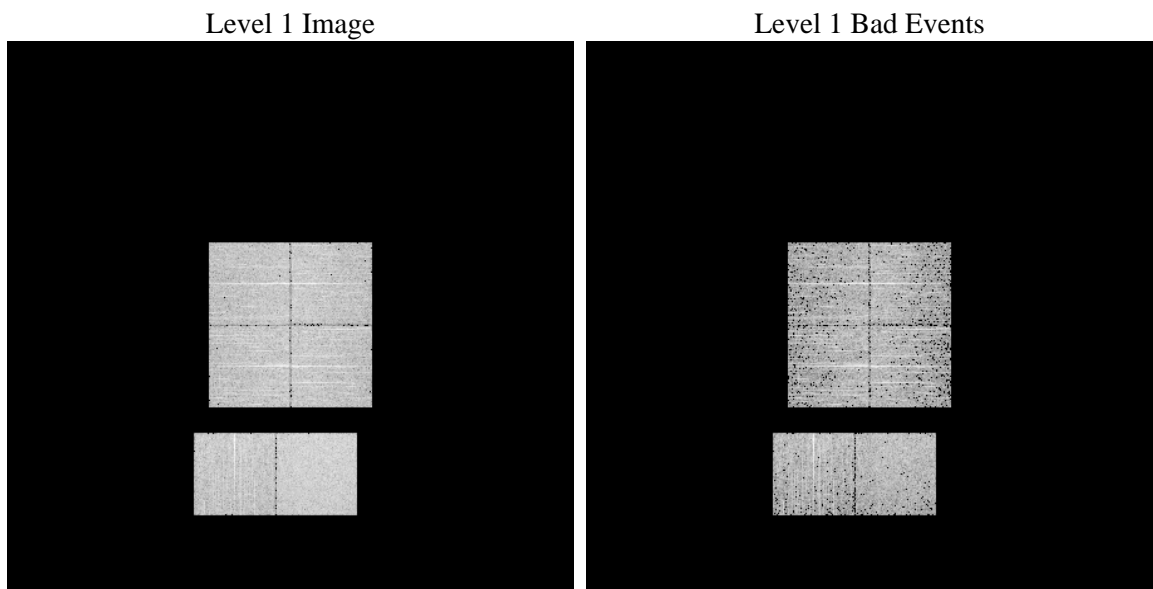
1 Front

seq_num	 	Sequence number
obs_id	55168	Observation id
title	ACIS-012367 diagnostics	Proposal title
observer	CHANDRA engineering request/realtime commanding	Principal investig
object	 	Source name
dtcycle	0	
cycle	P	events from which exps? Prim/Second/Both
ra_targ	0.0	Observer's specified target RA [deg]
dec_targ	0.0	Observer's specified target Dec [deg]
ra_nom	336.00615992664	Nominal RA [deg]
dec_nom	15.961602723809	Nominal Dec [deg]
roll_nom	239.08890076178	Nominal Roll [deg]
revision	2	Processing version of data
ontime	3285.8242835402	Sum of GTIs [s]
livetime	3244.2171979762	Livetime [s]
ontime0	3285.7832435369	Sum of GTIs [s]
ontime1	3285.7422035336	Sum of GTIs [s]
ontime2	3285.7011635303	Sum of GTIs [s]
ontime3	3285.8653235435	Sum of GTIs [s]
ontime6	3285.6601235271	Sum of GTIs [s]
ontime7	3285.8242835402	Sum of GTIs [s]
l2events	115448	Number of level 2 events

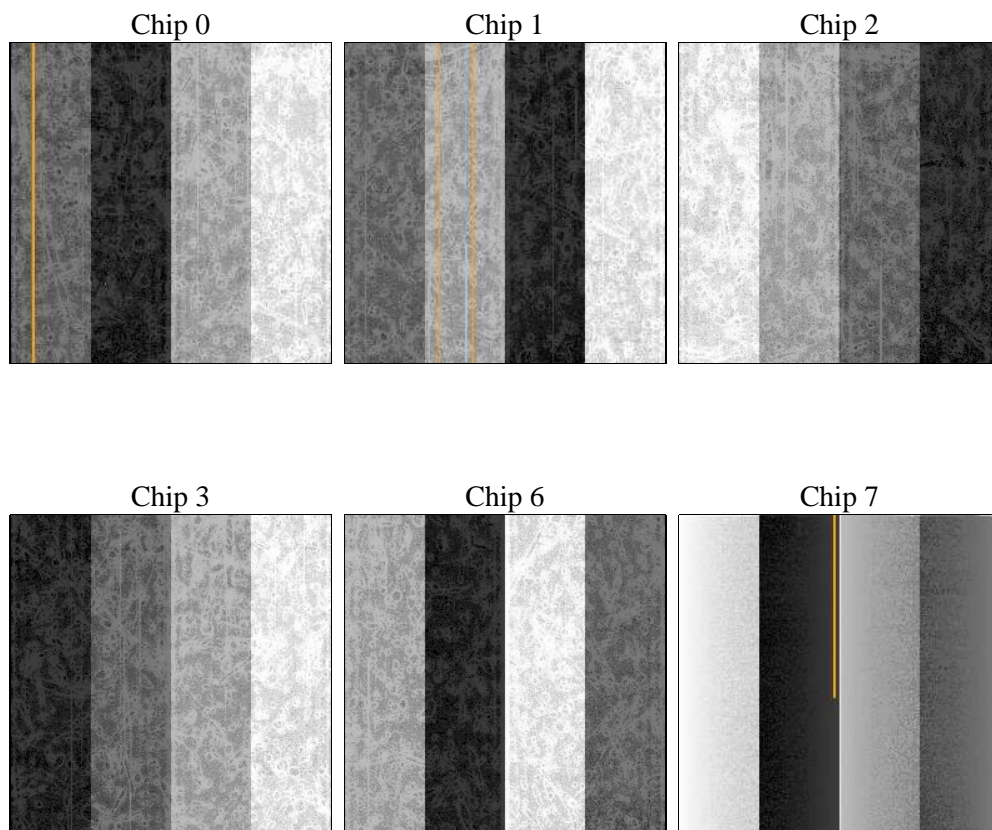
2 OBI

2.1 OBI

2.1.1 Images



2.1.2 Bias



2.1.3 Parameters

obi_num	0	Obi number	sched_exp_time	0.0	[s] Scheduled observation exposure time
ascdsver	8.4.3	Processing system revision	ontime	3285.8242835402	Sum of GTIs [s]
caldbver	4.4.8	 	ontime0	3285.7832435369	Sum of GTIs [s]
date	2012-02-23T15:50:21	Date and time of file creation	ontime1	3285.7422035336	Sum of GTIs [s]
revision	2	Processing version of data	ontime2	3285.7011635303	Sum of GTIs [s]
			ontime3	3285.8653235435	Sum of GTIs [s]
			ontime6	3285.6601235271	Sum of GTIs [s]
			ontime7	3285.8242835402	Sum of GTIs [s]
			l1events	259180	Number of level 1 events

2.1.4 Events

	ccd 0	ccd 1	ccd 2	ccd 3	ccd 6	ccd 7		ccd 0	ccd 1	ccd 2	ccd 3	ccd 6	ccd 7
level 1 events	39569	40506	41075	41741	43052	53237	grade 0 events	9751	9159	9666	9992	9300	4734
rejected events	21196	21813	23073	23050	24269	23548		24%	22%	23%	23%	21%	8%
rejected %	53%	53%	56%	55%	56%	44%	grade 1 events	59	49	53	55	52	43
								0%	0%	0%	0%	0%	0%
							grade 2 events	3385	3897	3115	3225	3717	6669
								8%	9%	7%	7%	8%	12%
							grade 3 events	1210	1202	1285	1313	1172	2534
								3%	2%	3%	3%	2%	4%
							grade 4 events	1199	1229	1267	1352	1252	2284
								3%	3%	3%	3%	2%	4%
							grade 5 events	1285	1295	1242	1363	1385	3394
								3%	3%	3%	3%	3%	6%
							grade 6 events	2828	3206	2669	2809	3342	13468
								7%	7%	6%	6%	7%	25%
							grade 7 events	19852	20469	21778	21632	22832	20111
								50%	50%	53%	51%	53%	37%

2.2 Compared Parameters

Parameter	Planned	Actual	Parameter	Planned	Actual
Instrument	ACIS	ACIS	Obspar format version number	7	7
Detector	ACIS-012367	ACIS-012367	Obspar file type	PREDICTED	ACTUAL
Grating	NONE	NONE	Obspar update status	NONE	UPDATED
Data mode	FAINT	FAINT	Number of optional ACIS chips dropped	0	0
Observation mode	SECONDARY	SECONDARY	On-chip summing requested	N	N
[deg] Pointing RA	0	336.0061599266356	Subarray requested	NONE	NONE
[deg] Pointing Dec	0	15.9616027238093	Alternating exposures requested	N	N
[deg] Pointing Roll	0.0	239.0889007617813	[s] Primary exposure time	3.2	3.2
[mm] SIM focus pos	-1.429586	-1.428180813131781			
[mm] SIM defocus	0.1037507710433287	0.1051558262725154			
[mm] SIM translation stage pos	250.455976	250.466033080201			
[mm] SIM translation stage offset	0	-0.01005468664627074			
[s] Observation start time (MET)	433203969.332936	433203968.30794			
Observation start date	2011-09-23T22:26:09	2011-09-23T22:26:08			
[s] Observation end time (MET)	433211706.033341	433211705.00835			
Observation end date	2011-09-24T00:35:06	2011-09-24T00:35:05			
Read mode	TIMED	TIMED			

2.3 Star Slots

2.4 FID Slots

A Summary

A.1 Status

V&V Scientist	Jen Lauer
V&V Date (YYYY-MM-DD)	2012.02.23
V&V Edition	1
V&V Disposition and Status	OK
V&V Charge Time	3.2858242835402

A.2 Comments