

V&V Reference Report

L2 ASCDS Version : 8.4.3

Observation 5488 - L2 Version 2
Chandra X-Ray Center

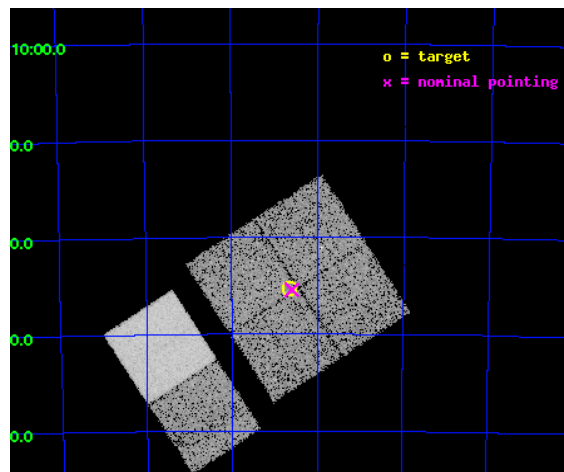
L2 Processing Date : Mar 25 2012

Contents

1	Front	2
2	OBI	3
2.1	OBI	3
2.1.1	Images	3
2.1.2	Bias	3
2.1.3	Parameters	4
2.1.4	Events	4
2.2	Compared Parameters	5
2.3	Aspect	6
2.4	Star Slots	9
2.4.1	Slot 3	9
2.4.2	Slot 4	10
2.4.3	Slot 5	11
2.4.4	Slot 6	12
2.4.5	Slot 7	13
2.5	FID Slots	14
2.5.1	Slot 0	14
2.5.2	Slot 1	15
2.5.3	Slot 2	16
A	Summary	17
A.1	Status	17
A.2	Comments	17

1 Front

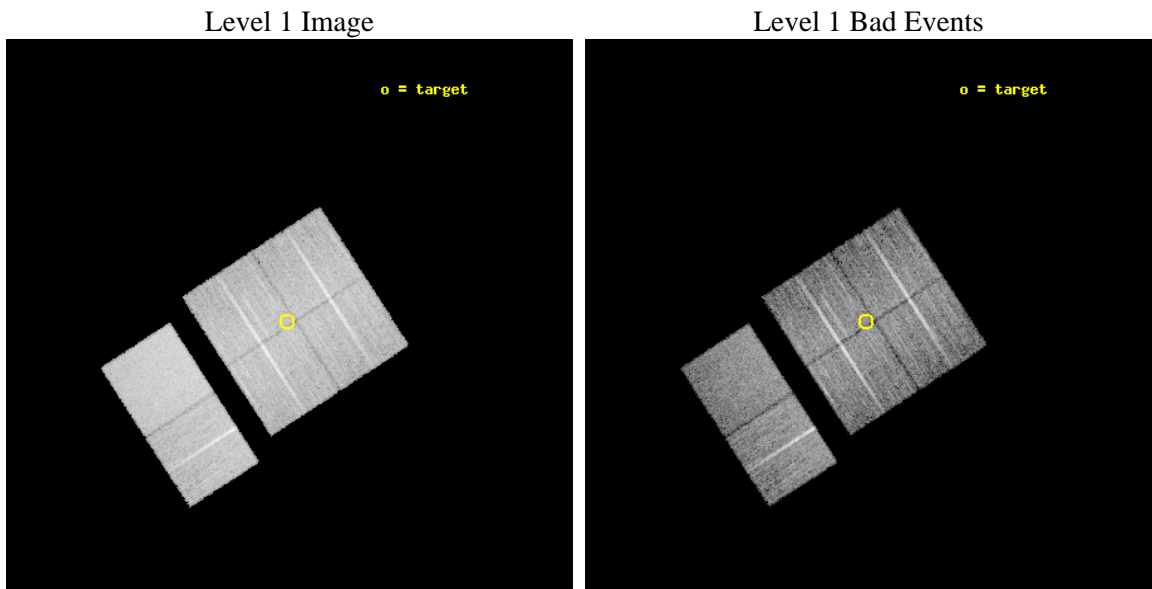
seq_num	400418	Sequence number
obs_id	5488	Observation id
title	Discovering X-ray pulsars in the Wing of the Small Magellanic Cloud	
observer	Prof Malcolm Coe	Principal investigator
object	SMCwing 9	Source name
dtcycle	0	
cycle	P	events from which exps? Prim/Second/Both
ra_targ	18.1625	Observer's specified target RA [deg]
dec_targ	-72.588056	Observer's specified target Dec [deg]
ra_nom	18.149552666986	Nominal RA [deg]
dec_nom	-72.59066438406	Nominal Dec [deg]
roll_nom	237.01318391807	Nominal Roll [deg]
revision	2	Processing version of data
ontime	10147.199962199	Sum of GTIs [s]
livetime	10018.710006367	Livetime [s]
ontime0	10147.199962199	Sum of GTIs [s]
ontime1	10147.199962199	Sum of GTIs [s]
ontime2	10147.199962199	Sum of GTIs [s]
ontime3	10147.199962199	Sum of GTIs [s]
ontime6	10143.958991915	Sum of GTIs [s]
ontime7	10147.199962199	Sum of GTIs [s]
l2events	91277	Number of level 2 events



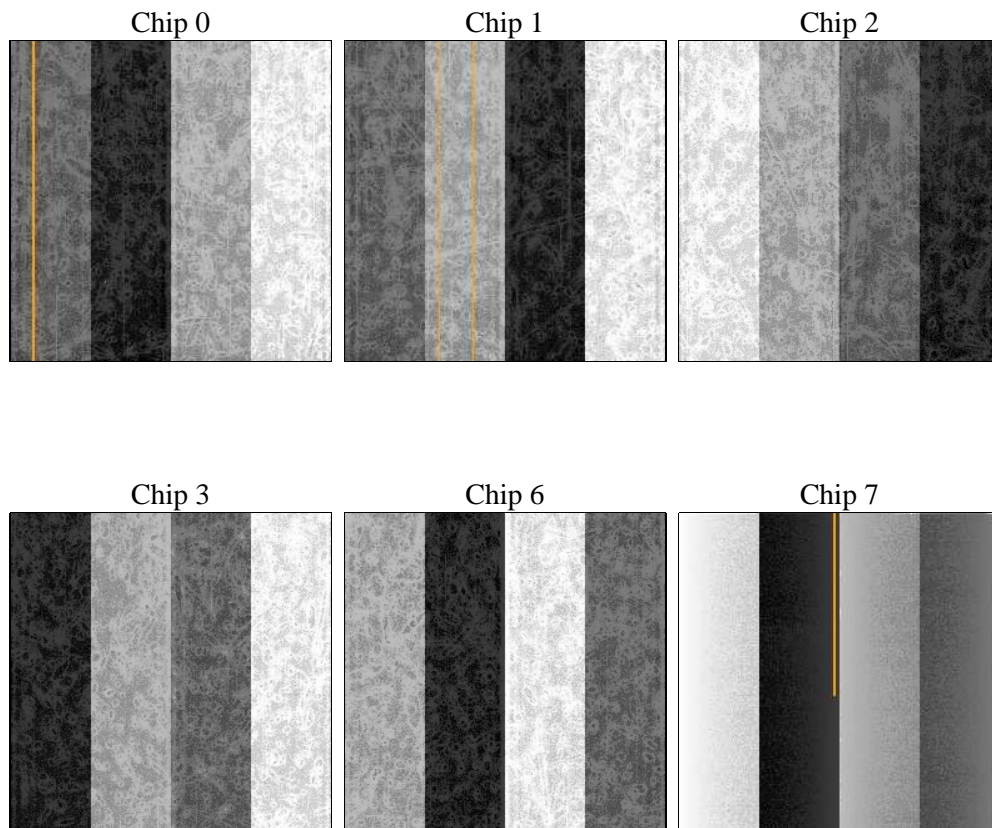
2 OBI

2.1 OBI

2.1.1 Images



2.1.2 Bias



2.1.3 Parameters

obi_num	0	Obi number	sched_exp_time	10000.000000	[s] Scheduled observation exposure time
ascdsver	8.4.3	Processing system revision	ontime	10147.199962199	Sum of GTIs [s]
caldsver	4.4.8	 	ontime0	10147.199962199	Sum of GTIs [s]
date	2012-03-25T15:52:34	Date and time of file creation	ontime1	10147.199962199	Sum of GTIs [s]
revision	2	Processing version of data	ontime2	10147.199962199	Sum of GTIs [s]
			ontime3	10147.199962199	Sum of GTIs [s]
			ontime6	10143.958991915	Sum of GTIs [s]
			ontime7	10147.199962199	Sum of GTIs [s]
			l1events	542574	Number of level 1 events

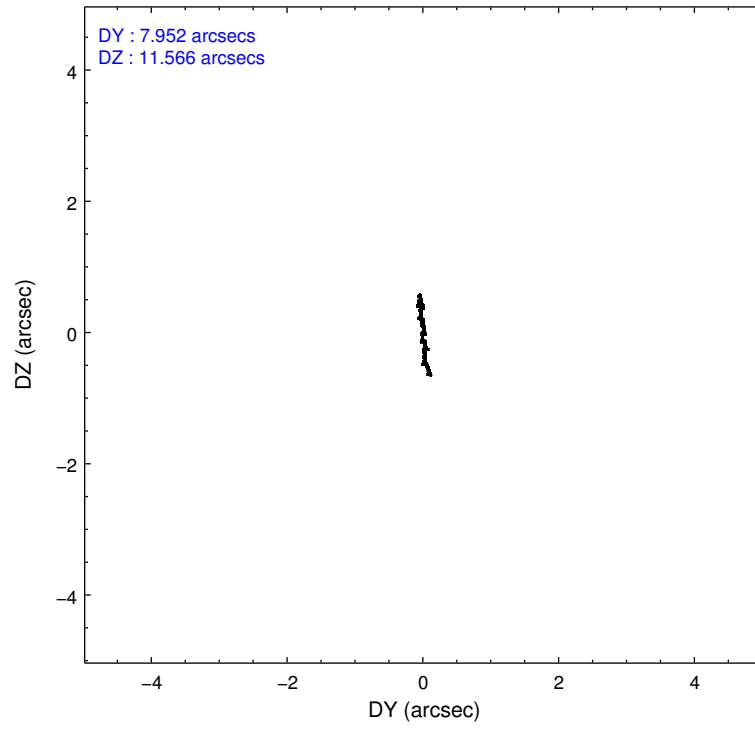
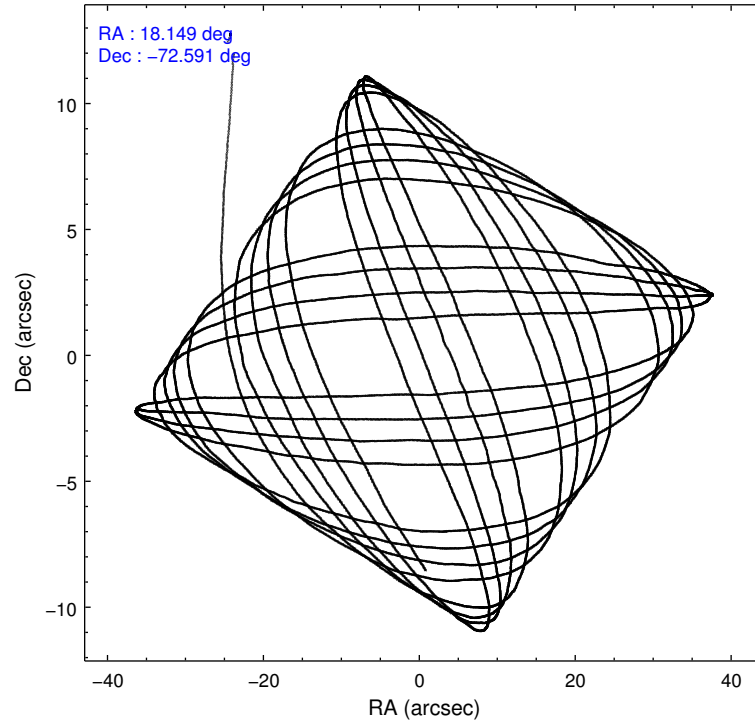
2.1.4 Events

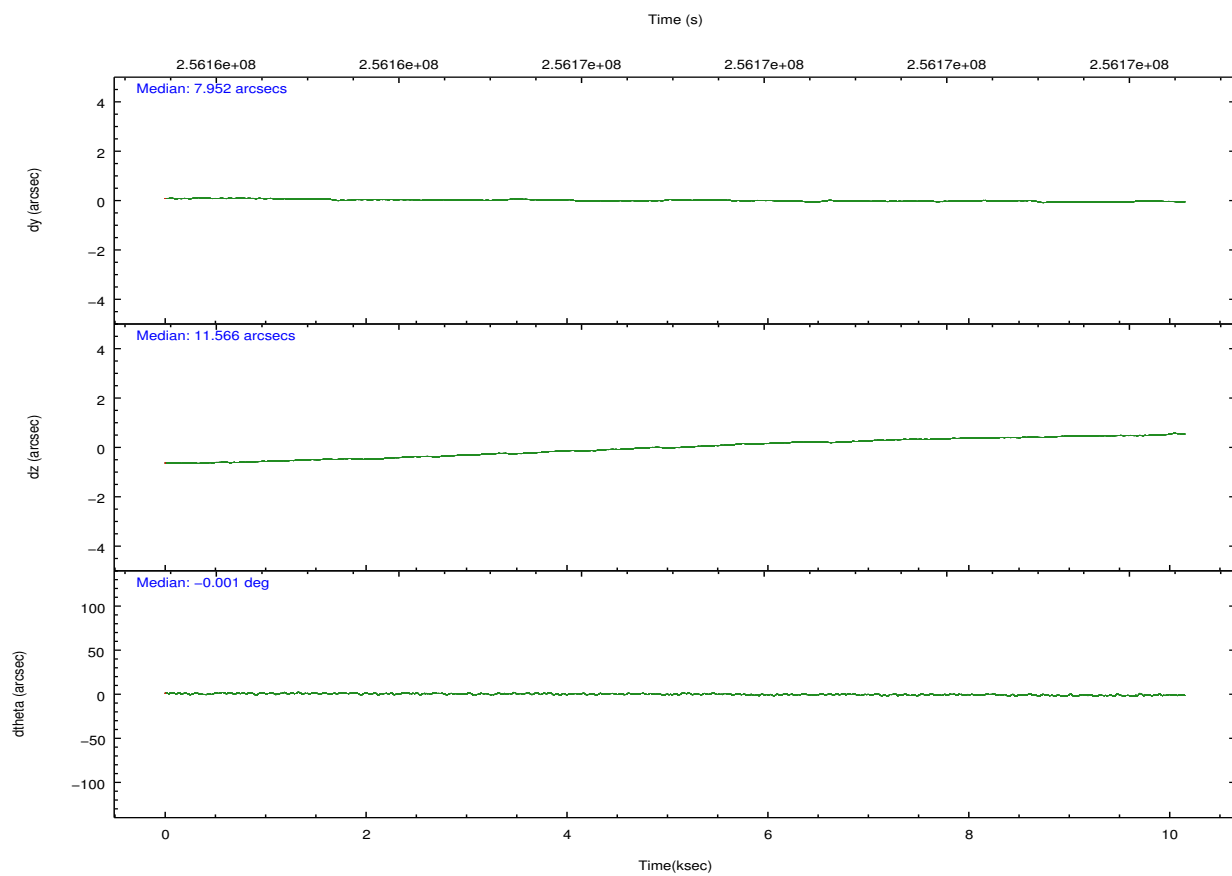
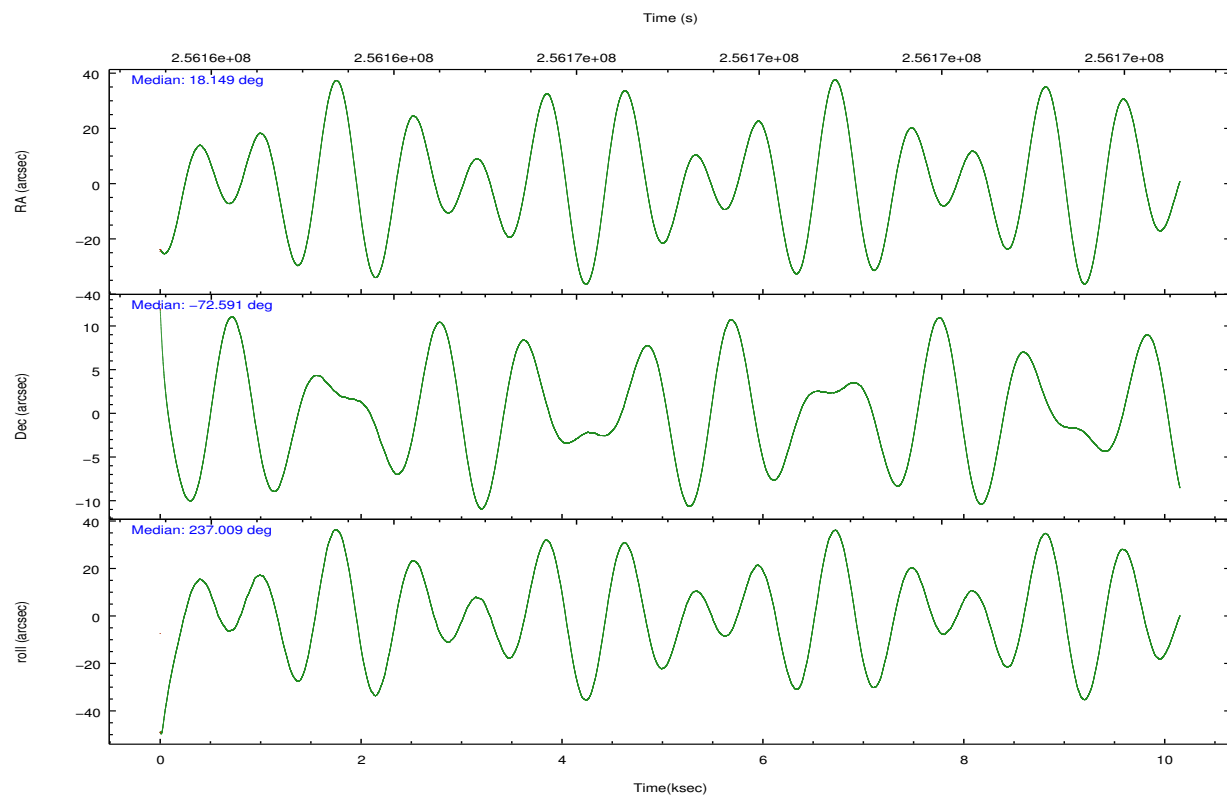
	ccd 0	ccd 1	ccd 2	ccd 3	ccd 6	ccd 7		ccd 0	ccd 1	ccd 2	ccd 3	ccd 6	ccd 7
level 1 events	79882	80915	86492	84625	91234	119426	grade 0 events	4216	4130	4673	4494	3954	4366
rejected events	69868	70334	76247	74487	81052	71029		5%	5%	5%	5%	4%	3%
rejected %	87%	86%	88%	88%	88%	59%	grade 1 events	28	40	58	56	48	93
								0%	0%	0%	0%	0%	0%
							grade 2 events	2281	2420	2139	2008	2278	9925
								2%	2%	2%	2%	2%	8%
							grade 3 events	995	1053	958	998	980	4375
								1%	1%	1%	1%	1%	3%
							grade 4 events	952	1062	944	999	1006	4233
								1%	1%	1%	1%	1%	3%
							grade 5 events	3547	3825	3346	3915	4163	11451
								4%	4%	3%	4%	4%	9%
							grade 6 events	1767	2128	1753	1839	2191	26512
								2%	2%	2%	2%	2%	22%
							grade 7 events	66096	66257	72621	70316	76614	58471
								82%	81%	83%	83%	83%	48%

2.2 Compared Parameters

Parameter	Planned	Actual	Parameter	Planned	Actual
Instrument	ACIS	ACIS	Obspar format version number	7	7
Detector	ACIS-012367	ACIS-012367	Obspar file type	PREDICTED	ACTUAL
Grating	NONE	NONE	Obspar update status	NONE	UPDATED
Data mode	FAINT	FAINT	Number of optional ACIS chips dropped	0	0
Observation mode	POINTING	POINTING	On-chip summing requested	N	N
[deg] Pointing RA	18.154051	18.1495526669856	Subarray requested	NONE	NONE
[deg] Pointing Dec	-72.563287	-72.59066438406002	Alternating exposures requested	N	N
[deg] Pointing Roll	236.808828	237.0131839180699	[s] Primary exposure time	0.000000	3.2
[mm] SIM focus pos	-0.782348	-0.7809083437167272			
[mm] SIM defocus	0	0.001439871863259334			
[mm] SIM translation stage pos	-233.592463	-233.5874344608287			
[mm] SIM translation stage offset	0	-0.005018542100998502			
[s] Observation start time (MET)	256162103.184000	256160944.32502			
Observation start date	2006-02-12T20:07:18	2006-02-12T19:49:04			
[s] Observation end time (MET)	256172103.184000	256172237.77555			
Observation end date	2006-02-12T22:53:58	2006-02-12T22:57:17			
Read mode	TIMED	TIMED			

2.3 Aspect



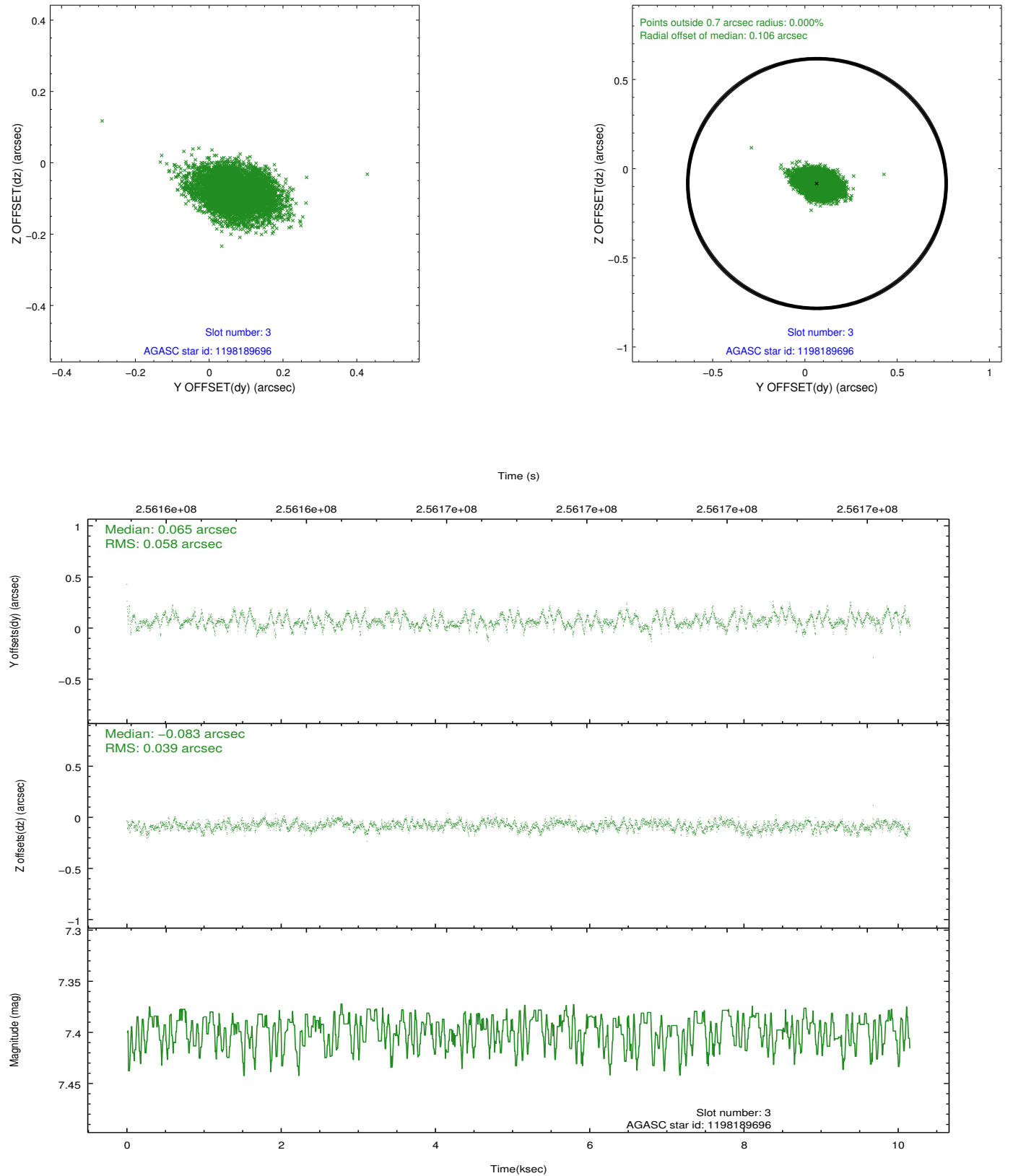


Slot Statistics

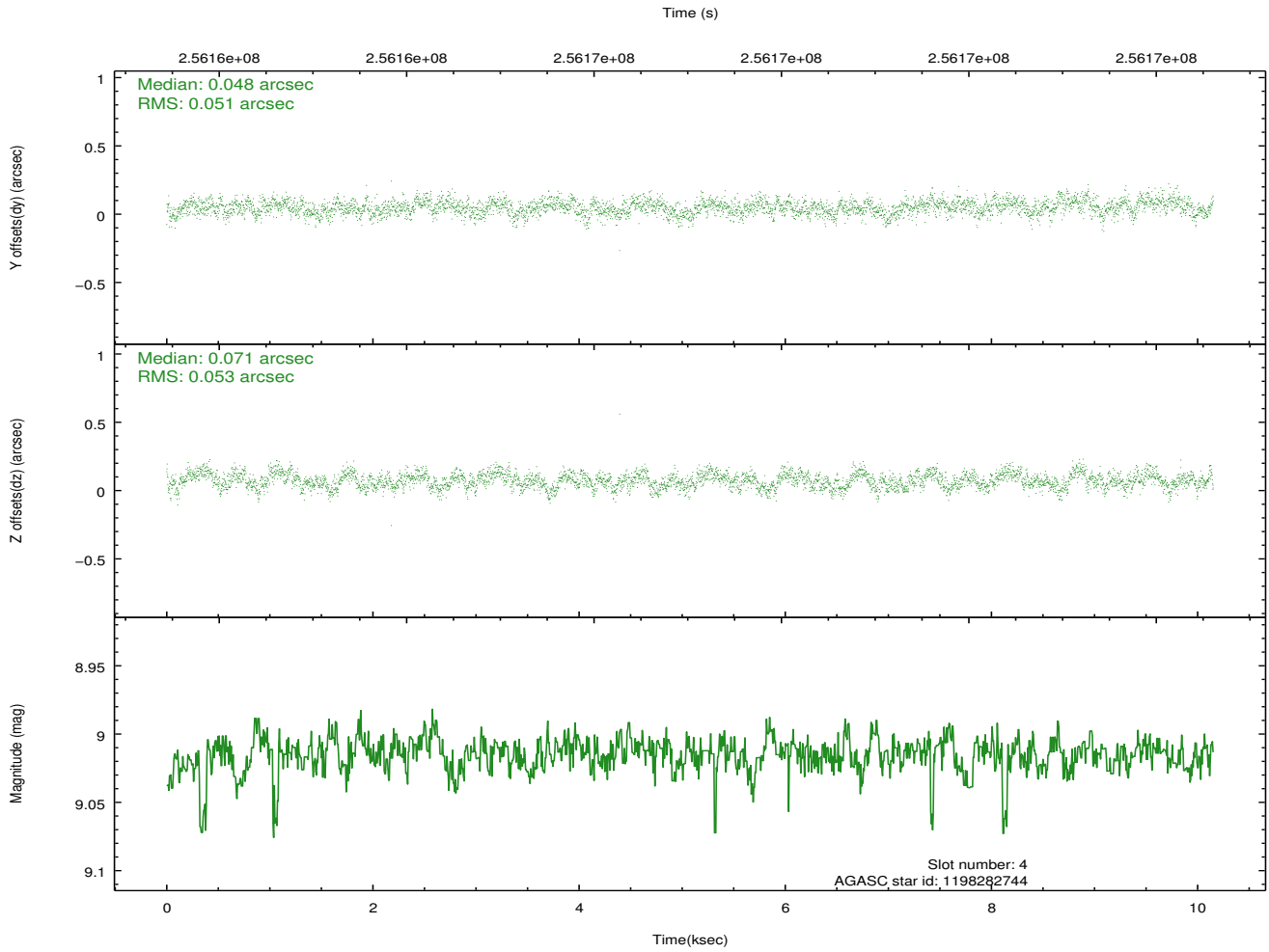
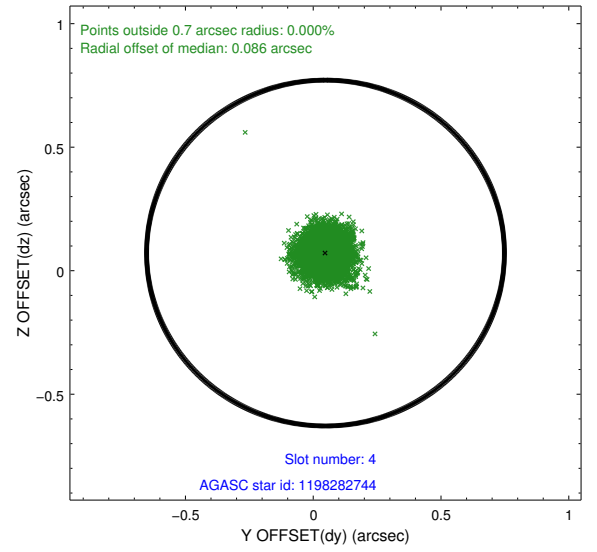
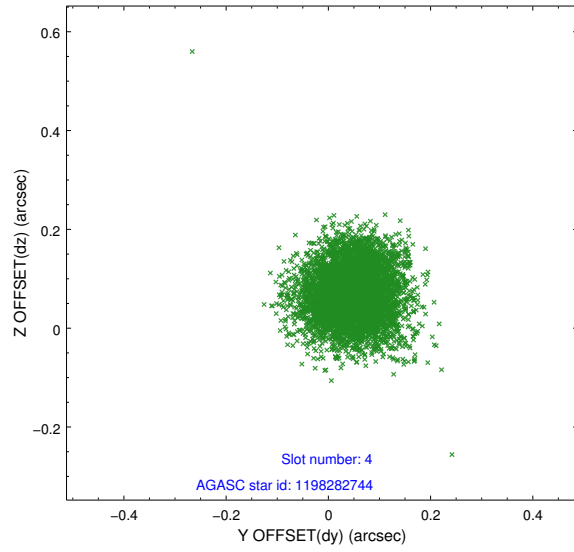
slot	status	id	mag	n_pts	med_dy	med_dz	dr1	dr2	ra	dec	mean_y	mean_z
0	FID	ACIS-I-4	7.17	2477	0.138	0.051	0.016	0.025	0.000000	0.000000	2151.81	1064.85
1	FID	ACIS-I-5	7.23	2476	-0.234	0.042	0.014	0.021	0.000000	0.000000	-1815.85	1063.00
2	FID	ACIS-I-6	7.25	2477	-0.004	-0.026	0.022	0.039	0.000000	0.000000	396.69	1707.24
3	GUIDE	1198189696	7.40	4952	0.065	-0.083	0.074	0.120	15.223750	-72.697522	2185.92	-2317.55
4	GUIDE	1198282744	9.01	4950	0.048	0.071	0.078	0.126	17.028326	-73.013356	2014.10	-97.42
5	GUIDE	1198283128	7.93	4953	-0.023	0.026	0.051	0.080	17.272580	-72.642428	763.16	-631.97
6	GUIDE	1197884536	8.50	4953	-0.080	-0.003	0.081	0.125	17.160729	-71.835289	-1574.80	-2362.46
7	GUIDE	1197883808	8.20	4950	-0.016	-0.012	0.090	0.154	21.001789	-72.324407	-2361.67	2173.37

2.4 Star Slots

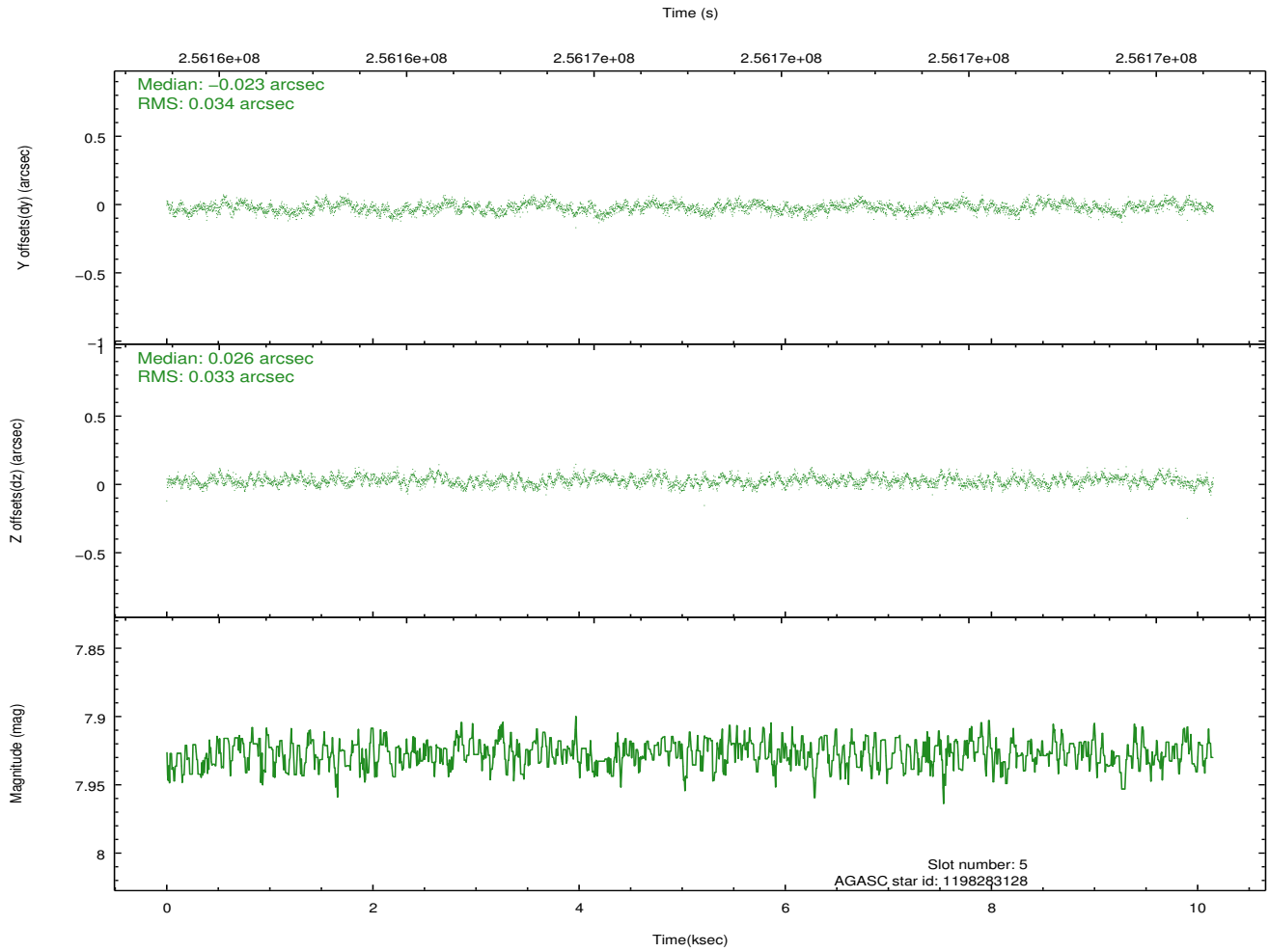
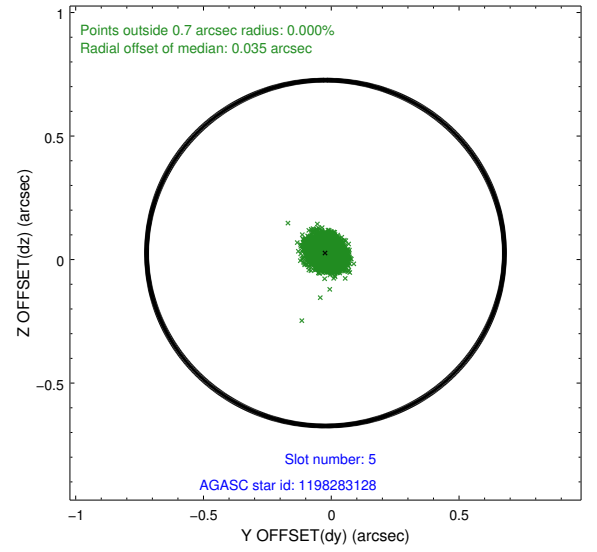
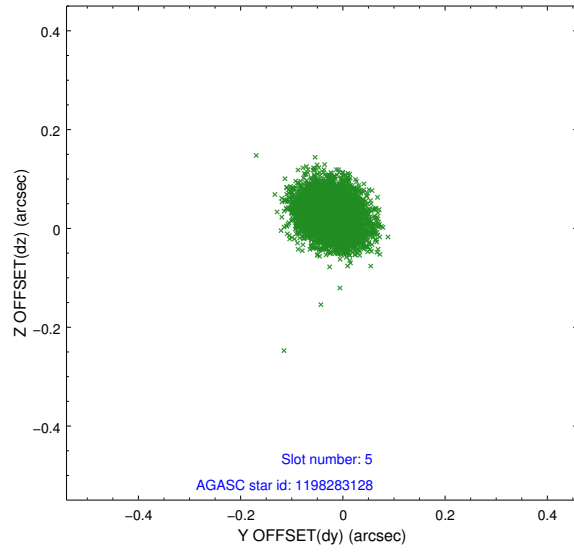
2.4.1 Slot 3



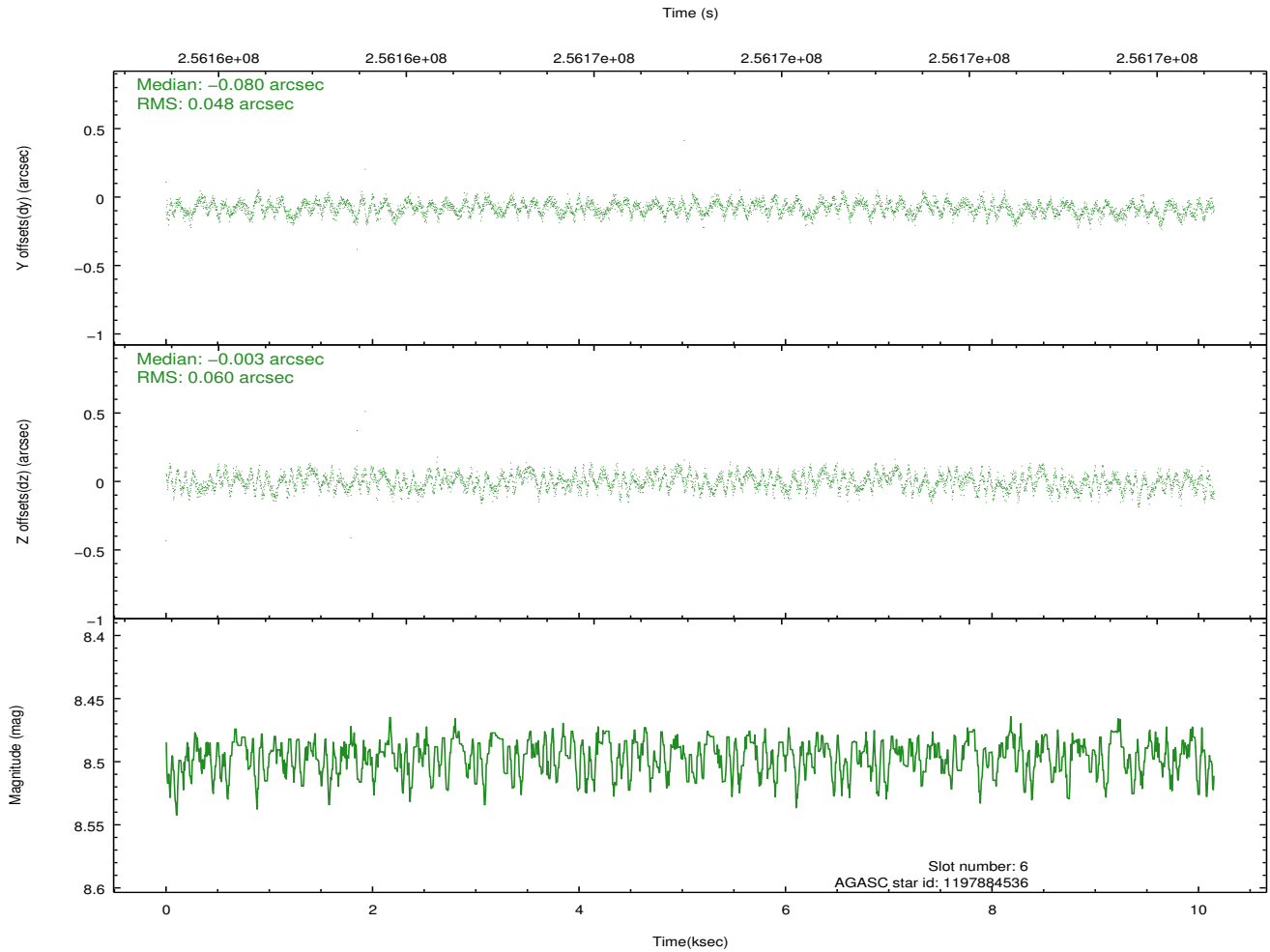
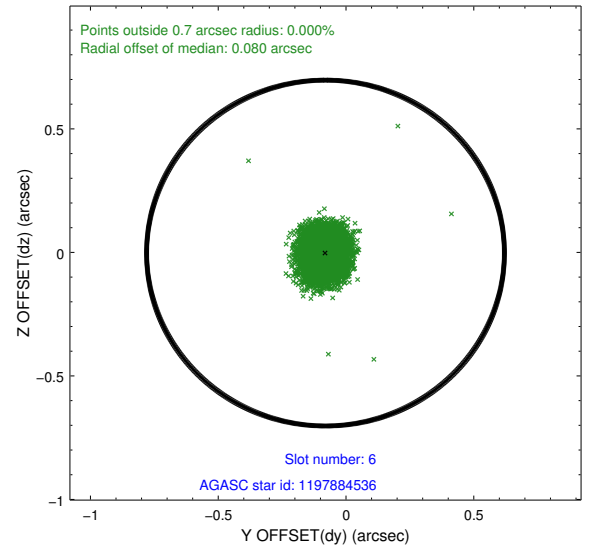
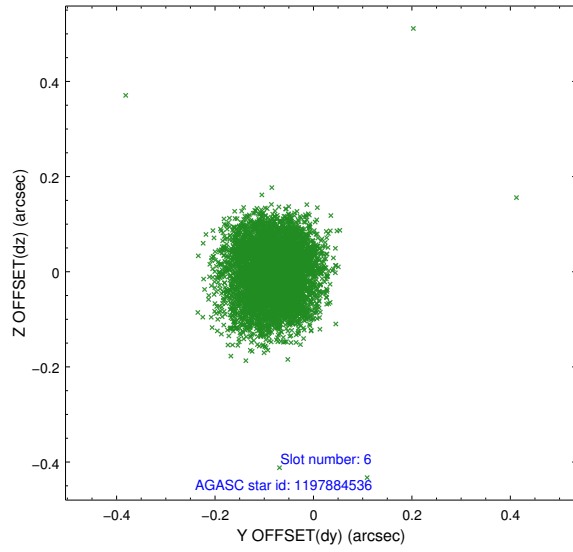
2.4.2 Slot 4



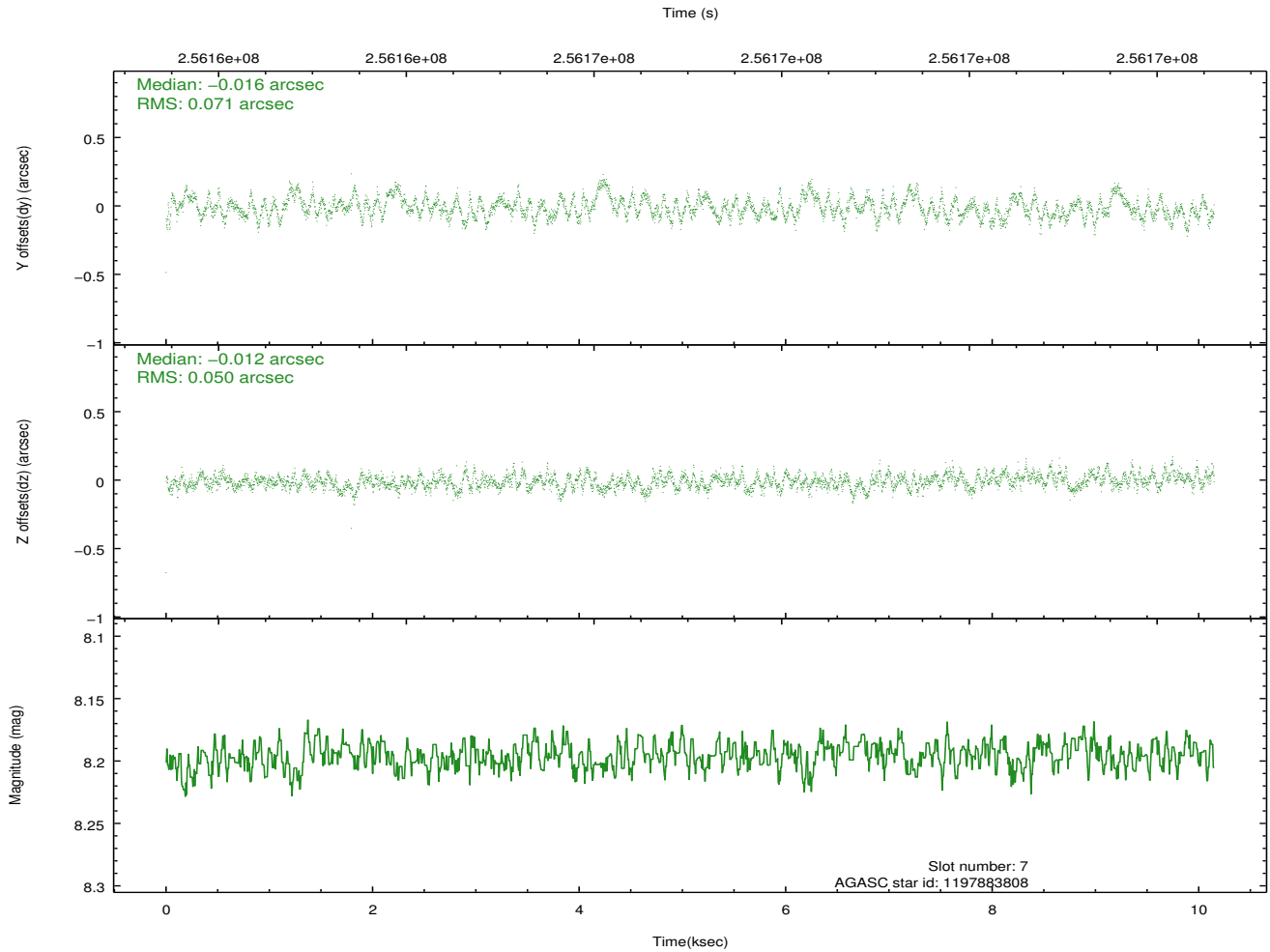
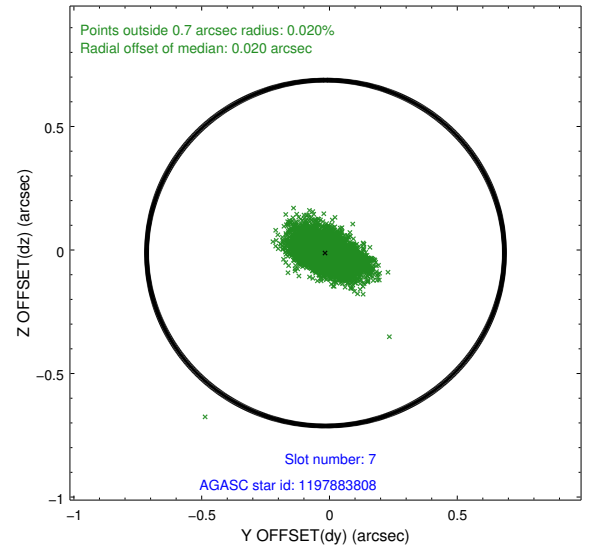
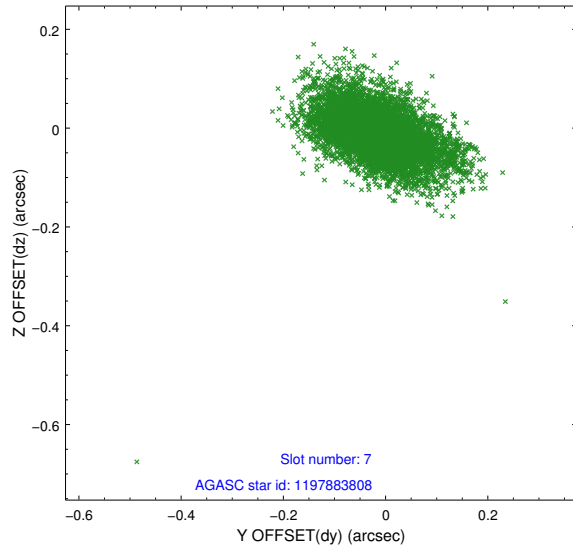
2.4.3 Slot 5



2.4.4 Slot 6

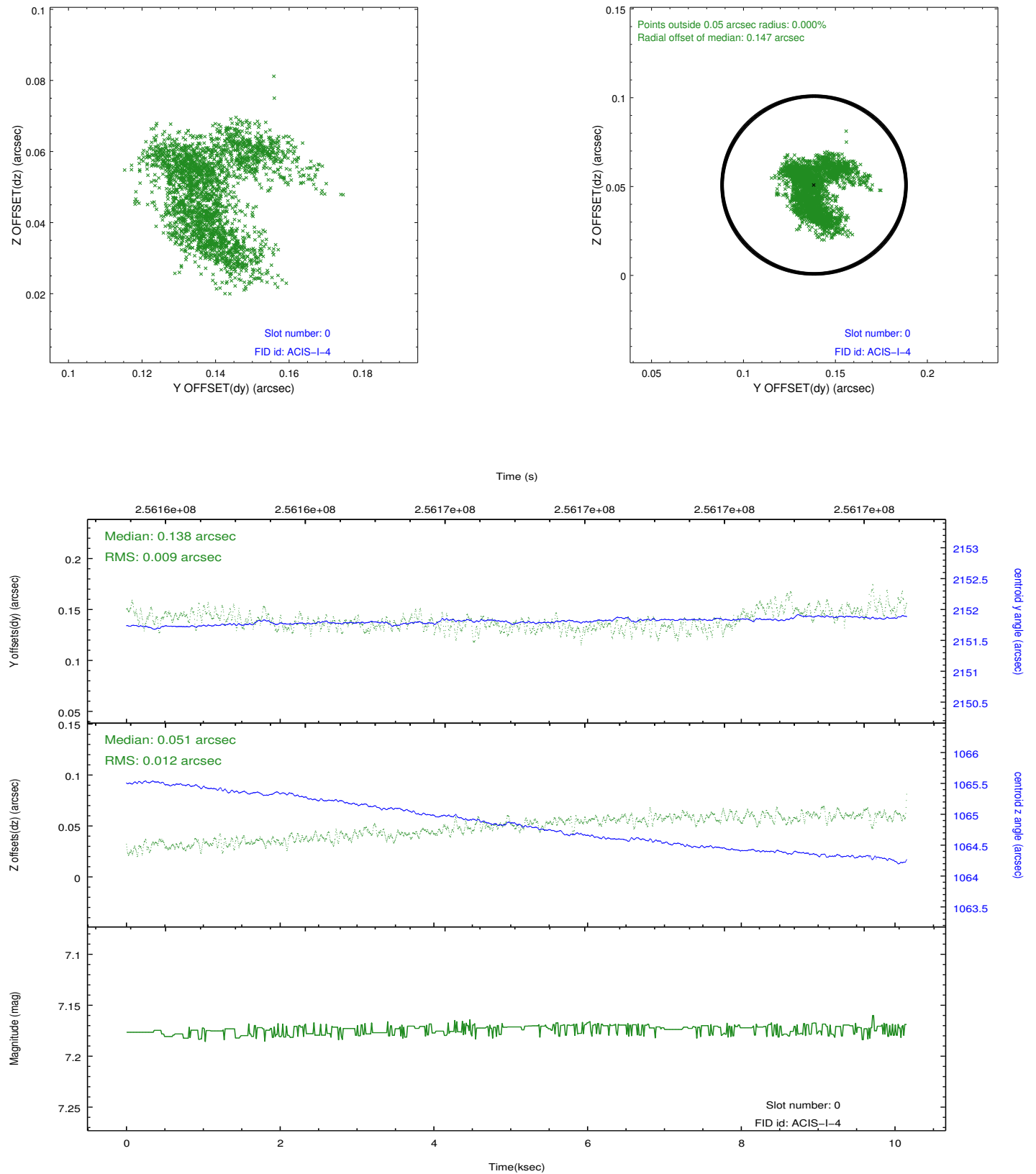


2.4.5 Slot 7

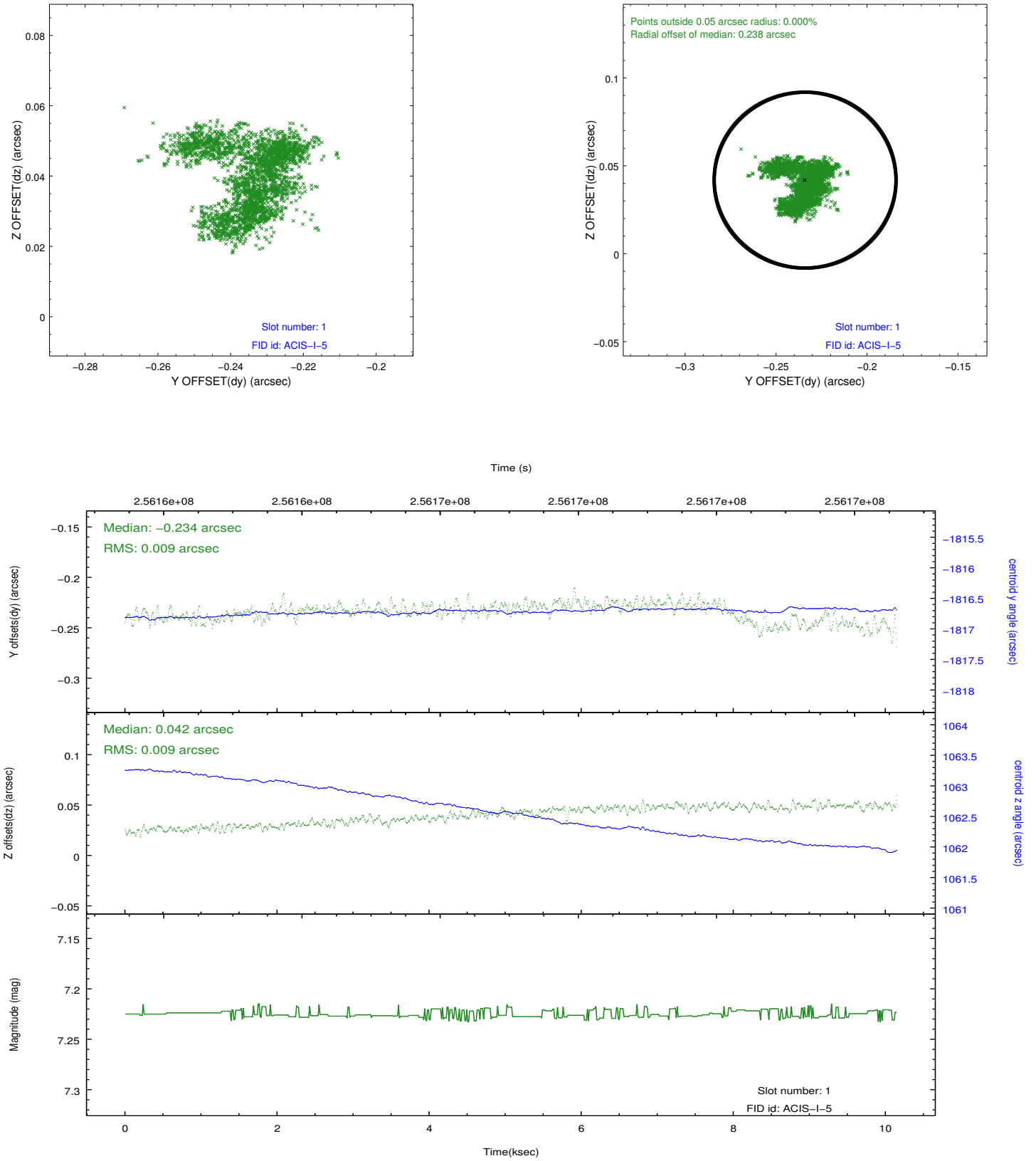


2.5 FID Slots

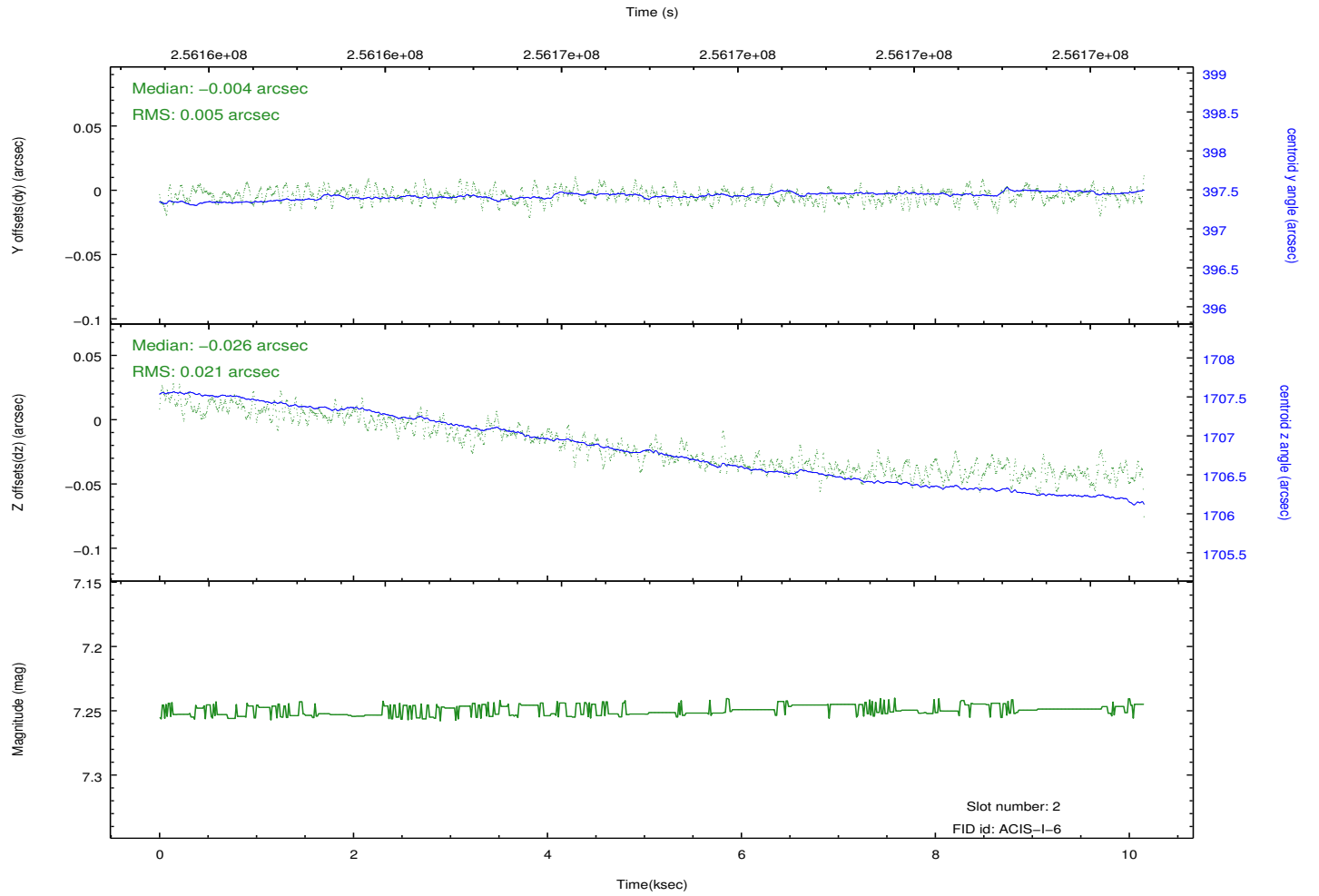
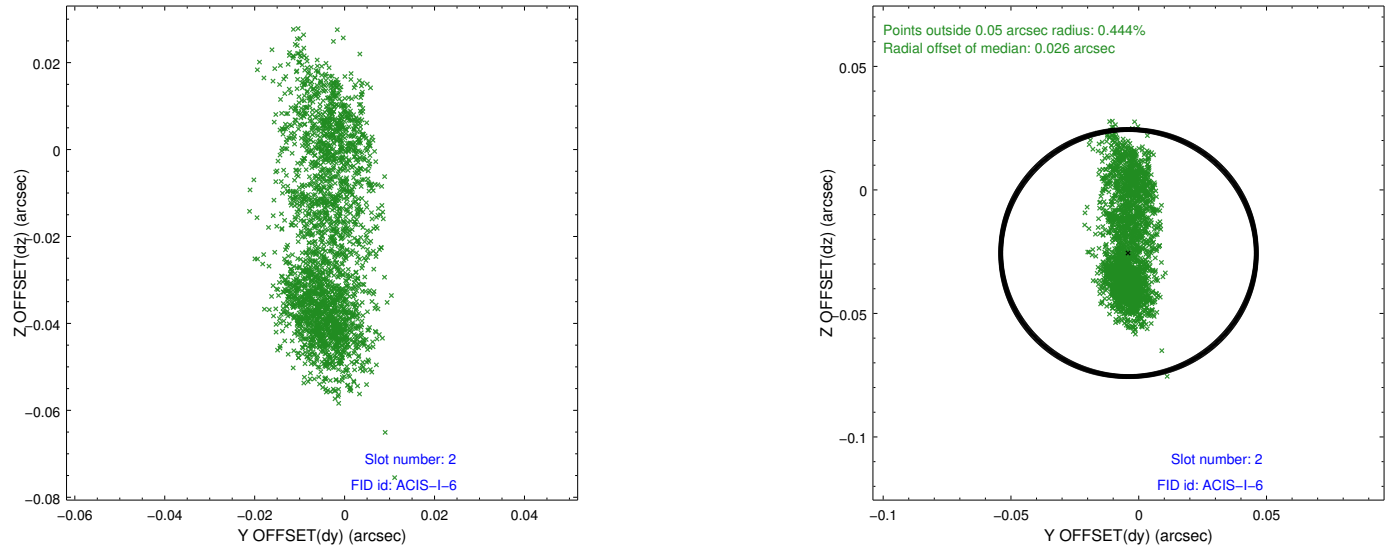
2.5.1 Slot 0



2.5.2 Slot 1



2.5.3 Slot 2



A Summary

A.1 Status

V&V Scientist	Jen Lauer
V&V Date (YYYY-MM-DD)	2012.03.27
V&V Edition	1
V&V Disposition and Status	OK
V&V Charge Time	10.1471999

A.2 Comments