

V&V Reference Report

L2 ASCDS Version : 8.4.4

Observation 54638 - L2 Version 1
Chandra X-Ray Center

L2 Processing Date : May 5 2012

Contents

1	Front	2
2	OBI	3
2.1	OBI	3
2.1.1	Images	3
2.1.2	Bias	3
2.1.3	Parameters	4
2.1.4	Events	4
2.2	Compared Parameters	5
2.3	Star Slots	6
2.4	FID Slots	6
A	Summary	7
A.1	Status	7
A.2	Comments	7

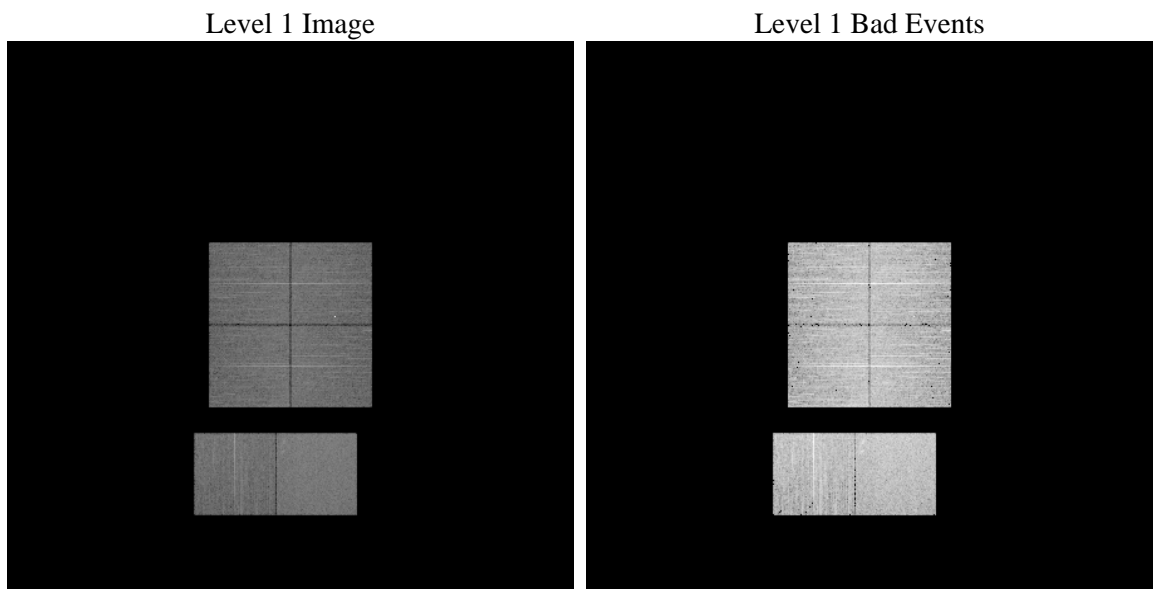
1 Front

seq_num	 	Sequence number
obs_id	54638	Observation id
title	ACIS-012367 diagnostics	Proposal title
observer	CHANDRA engineering request/realtime commanding	Principal investig
object	 	Source name
dtcycle	0	
cycle	P	events from which exps? Prim/Second/Both
ra_targ	0.0	Observer's specified target RA [deg]
dec_targ	0.0	Observer's specified target Dec [deg]
ra_nom	231.97152048016	Nominal RA [deg]
dec_nom	11.992768964929	Nominal Dec [deg]
roll_nom	161.70932822947	Nominal Roll [deg]
revision	1	Processing version of data
ontime	8286.8419092298	Sum of GTIs [s]
livetime	8181.9089272379	Livetime [s]
ontime0	8286.8008692265	Sum of GTIs [s]
ontime1	8286.7598292232	Sum of GTIs [s]
ontime2	8286.7187892199	Sum of GTIs [s]
ontime3	8286.8829492331	Sum of GTIs [s]
ontime6	8286.6777492166	Sum of GTIs [s]
ontime7	8286.8419092298	Sum of GTIs [s]
l2events	258570	Number of level 2 events

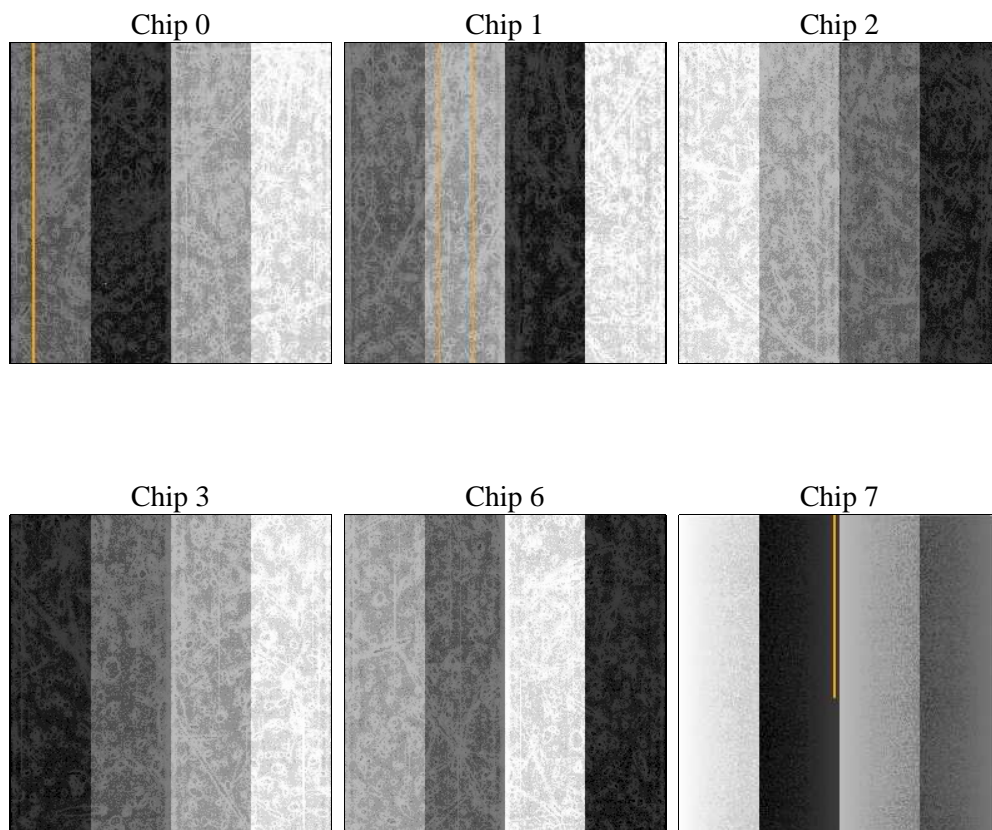
2 OBI

2.1 OBI

2.1.1 Images



2.1.2 Bias



2.1.3 Parameters

obi_num	0	Obi number	sched_exp_time	0.0	[s] Scheduled observation exposure time
ascdsver	8.4.4	Processing system revision	ontime	8286.8419092298	Sum of GTIs [s]
caldbver	4.4.9	 	ontime0	8286.8008692265	Sum of GTIs [s]
date	2012-05-06T01:39:42	Date and time of file creation	ontime1	8286.7598292232	Sum of GTIs [s]
revision	1	Processing version of data	ontime2	8286.7187892199	Sum of GTIs [s]
			ontime3	8286.8829492331	Sum of GTIs [s]
			ontime6	8286.6777492166	Sum of GTIs [s]
			ontime7	8286.8419092298	Sum of GTIs [s]
			l1events	595502	Number of level 1 events

2.1.4 Events

	ccd 0	ccd 1	ccd 2	ccd 3	ccd 6	ccd 7		ccd 0	ccd 1	ccd 2	ccd 3	ccd 6	ccd 7
level 1 events	91649	95749	92215	92851	96323	126715	grade 0 events	21398	23002	21751	21735	21419	11081
rejected events	50924	50967	51625	52081	54081	58021		23%	24%	23%	23%	22%	8%
rejected %	55%	53%	55%	56%	56%	45%	grade 1 events	130	125	125	119	105	122
								0%	0%	0%	0%	0%	0%
							grade 2 events	7592	9754	7148	7252	7876	14837
								8%	10%	7%	7%	8%	11%
							grade 3 events	2849	2669	2862	2856	2754	5908
								3%	2%	3%	3%	2%	4%
							grade 4 events	2749	2734	2850	2817	2801	5827
								2%	2%	3%	3%	2%	4%
							grade 5 events	3380	3377	3157	3610	3445	8707
								3%	3%	3%	3%	3%	6%
							grade 6 events	6137	6623	5979	6110	7392	31041
								6%	6%	6%	6%	7%	24%
							grade 7 events	47414	47465	48343	48352	50531	49192
								51%	49%	52%	52%	52%	38%

2.2 Compared Parameters

Parameter	Planned	Actual	Parameter	Planned	Actual
Instrument	ACIS	ACIS	Obspar format version number	7	7
Detector	ACIS-012367	ACIS-012367	Obspar file type	PREDICTED	ACTUAL
Grating	NONE	NONE	Obspar update status	NONE	UPDATED
Data mode	FAINT	FAINT	Number of optional ACIS chips dropped	0	0
Observation mode	SECONDARY	SECONDARY	On-chip summing requested	N	N
[deg] Pointing RA	0	231.9715204801592	Subarray requested	NONE	NONE
[deg] Pointing Dec	0	11.99276896492873	Alternating exposures requested	N	N
[deg] Pointing Roll	0.0	161.7093282294743	[s] Primary exposure time	3.2	3.2
[mm] SIM focus pos	-1.429586	-1.428180813131781			
[mm] SIM defocus	0.1037507710433287	0.1051558262725154			
[mm] SIM translation stage pos	250.455976	250.466033080201			
[mm] SIM translation stage offset	0	-0.01005468664627074			
[s] Observation start time (MET)	452594323.594539	452594322.56954			
Observation start date	2012-05-05T08:38:44	2012-05-05T08:38:42			
[s] Observation end time (MET)	452611849.045469	452611848.02047			
Observation end date	2012-05-05T13:30:49	2012-05-05T13:30:48			
Read mode	TIMED	TIMED			

2.3 Star Slots

2.4 FID Slots

A Summary

A.1 Status

V&V Scientist	Jen Lauer
V&V Date (YYYY-MM-DD)	2012.05.07
V&V Edition	1
V&V Disposition and Status	OK
V&V Charge Time	8.2868419092298

A.2 Comments