

# V&V Reference Report

## L2 ASCDS Version : 7.6.7

Observation 5428 - L2 Version 002  
Chandra X-Ray Center

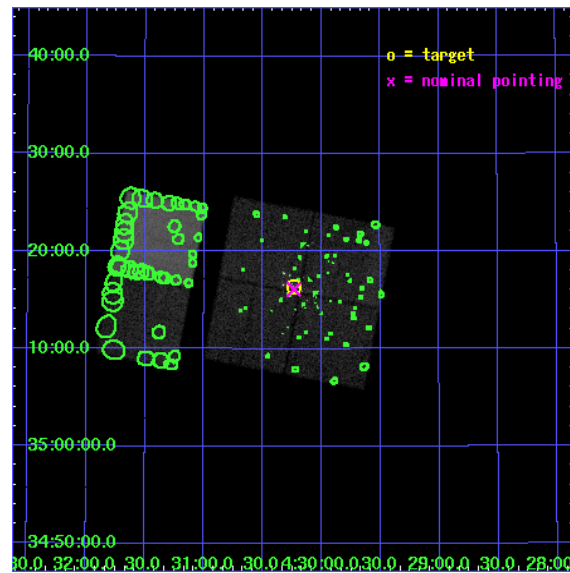
L2 Processing Date: Feb 27 2006

## Contents

<b>1</b>	<b>Front</b>	<b>2</b>
<b>2</b>	<b>OBI</b>	<b>3</b>
2.1	OBI . . . . .	3
2.1.1	Images . . . . .	3
2.1.2	Bias . . . . .	3
2.1.3	Parameters . . . . .	4
2.1.4	Events . . . . .	4
2.2	Compared Parameters . . . . .	5
2.3	Aspect . . . . .	6
2.4	Star Slots . . . . .	9
2.4.1	Slot 3 . . . . .	9
2.4.2	Slot 4 . . . . .	10
2.4.3	Slot 5 . . . . .	11
2.4.4	Slot 6 . . . . .	12
2.4.5	Slot 7 . . . . .	13
2.5	FID Slots . . . . .	14
2.5.1	Slot 0 . . . . .	14
2.5.2	Slot 1 . . . . .	15
2.5.3	Slot 2 . . . . .	16
<b>3</b>	<b>Point Sources</b>	<b>17</b>
<b>A</b>	<b>Summary</b>	<b>18</b>
A.1	Status . . . . .	18
A.2	Comments . . . . .	18

# 1 Front

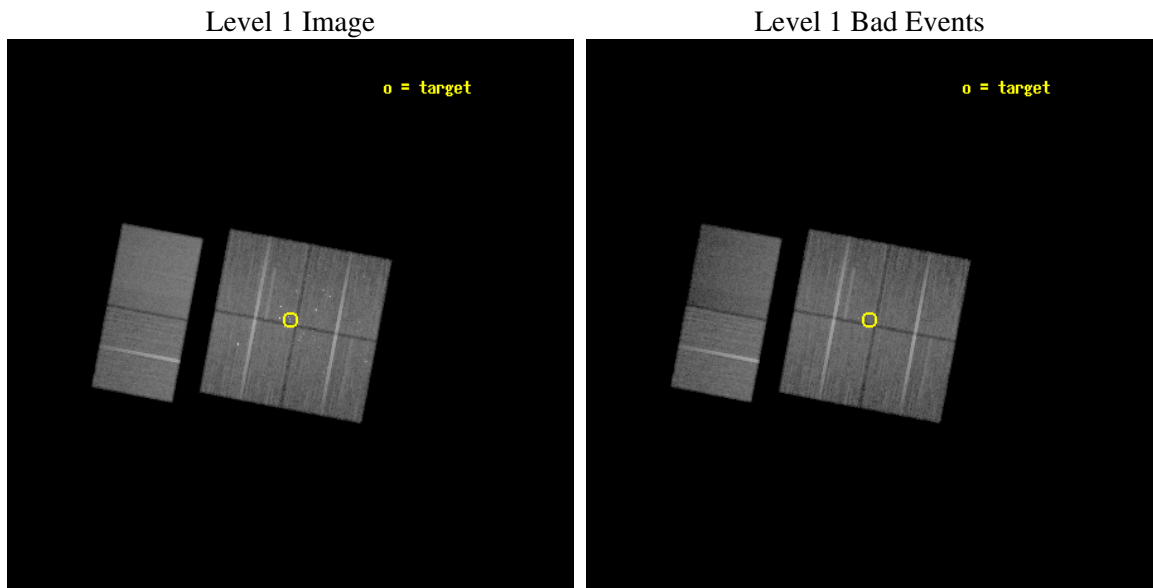
seq_num	200361
obs_id	5428
title	Multi-Wavelength Signatures of Magnetic Activity in the Star-Forming Region around LkHa101
observer	Dr. Scott Wolk
object	LkHa101 cluster
dtcycle	0
cycle	P
ra_targ	67.56
dec_targ	35.272833
ra_nom	67.558809459917
dec_nom	35.268318083807
roll_nom	280.77279813762
revision	2
ontime	40147.117860019
livetime	39638.750879984
ontime0	40150.358880132
ontime1	40140.635959268
ontime2	40150.358880132
ontime3	40147.117860019
ontime6	40150.35899964
ontime7	40153.599850416
l2events	228099



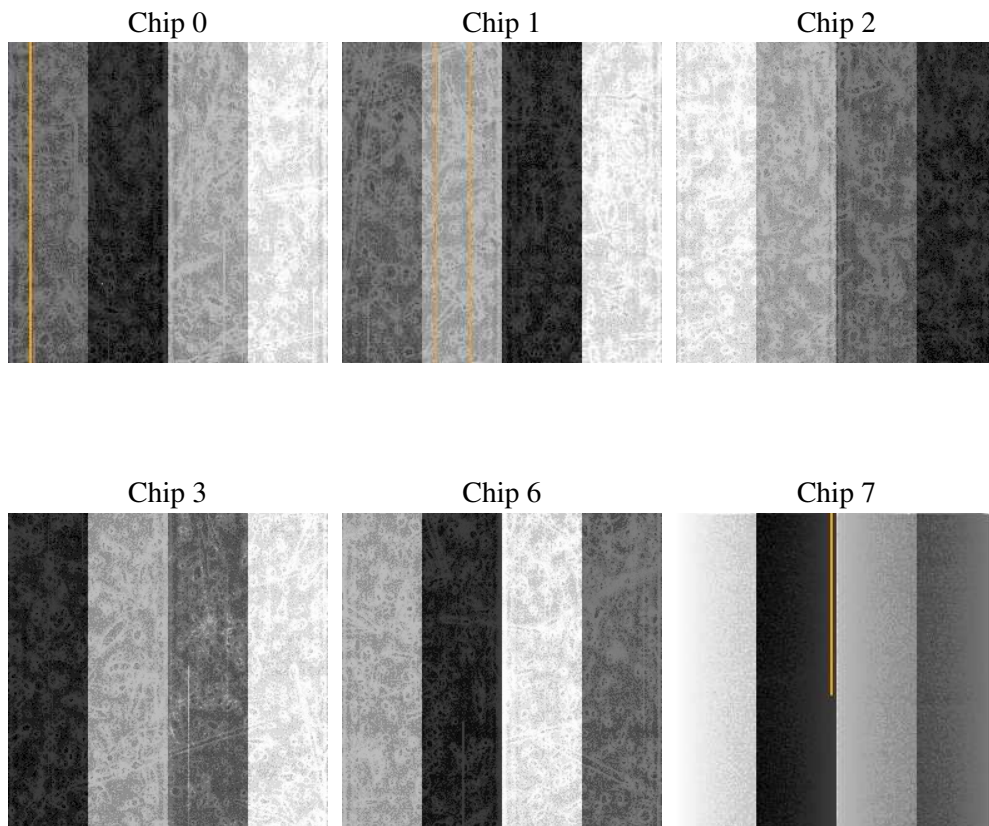
## 2 OBI

### 2.1 OBI

#### 2.1.1 Images



#### 2.1.2 Bias



### 2.1.3 Parameters

obi_num	0
ascdsver	7.6.7
caldsver	3.2.1
date	2006-02-27T07:05:35
revision	2

sched_exp_time	40000.000000
ontime	40350.477948695
ontime0	40353.718968809
ontime1	40343.996047944
ontime2	40353.718968809
ontime3	40350.477948695
ontime6	40353.719088316
ontime7	40356.959939092
l1events	1496716

### 2.1.4 Events

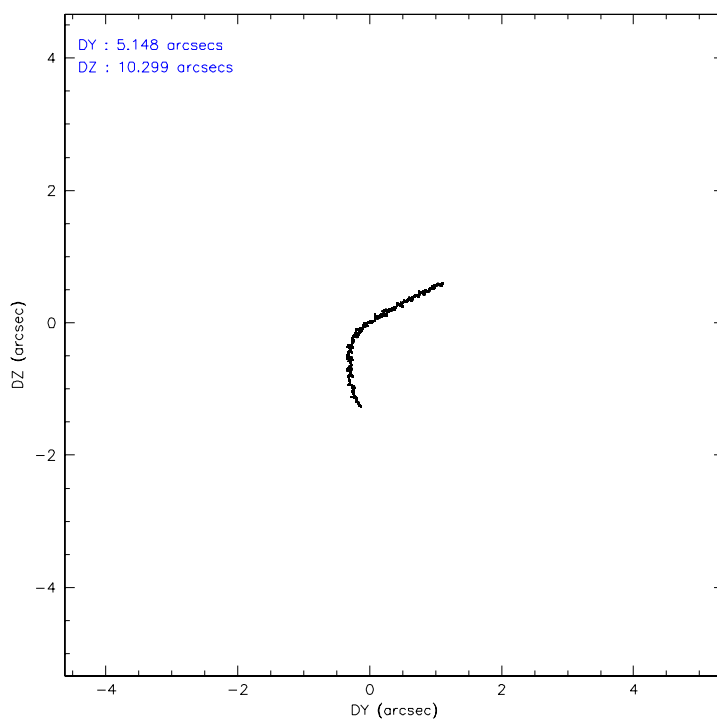
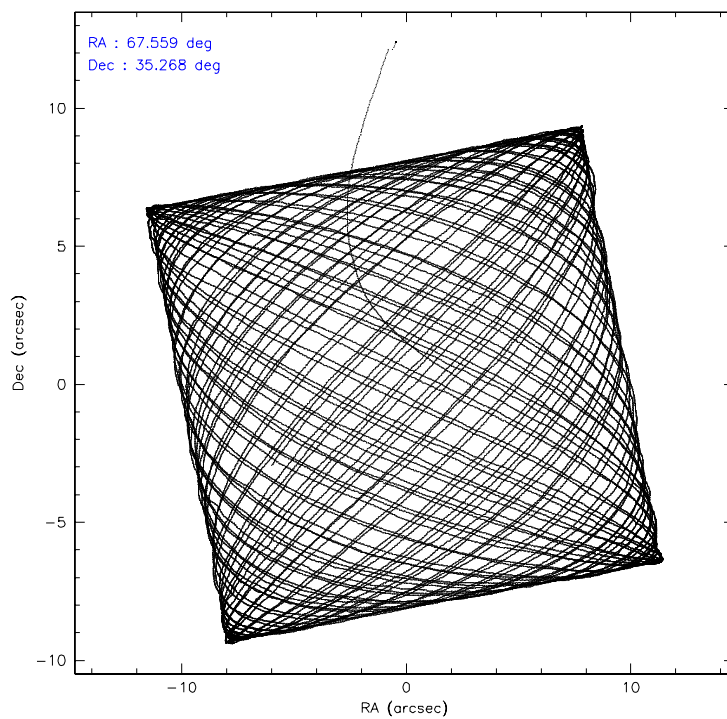
	ccd 0	ccd 1	ccd 2	ccd 3	ccd 6	ccd 7
level 1 events	226461	233210	255085	249151	260012	272797
rejected events	200336	201722	228545	219565	235071	158844
rejected %	88%	86%	89%	88%	90%	58%

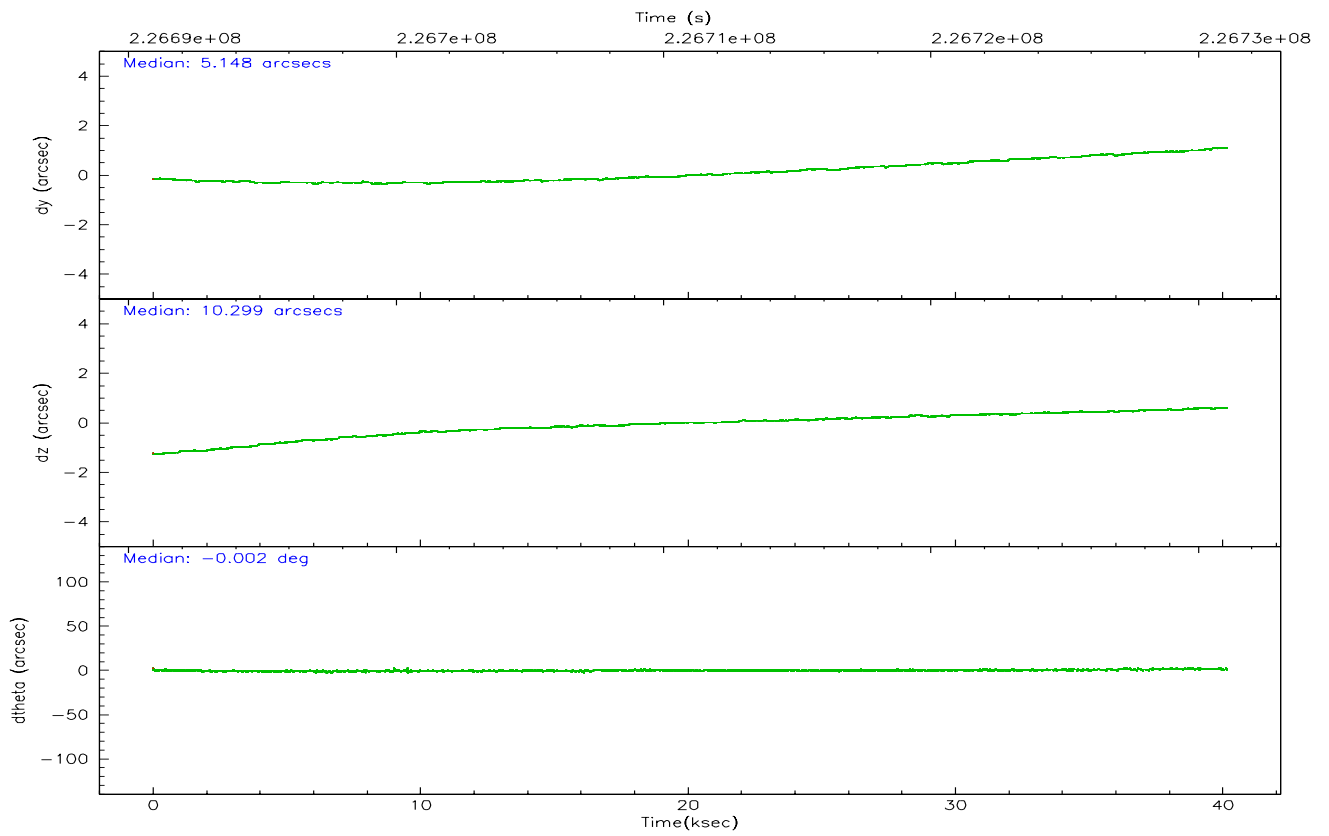
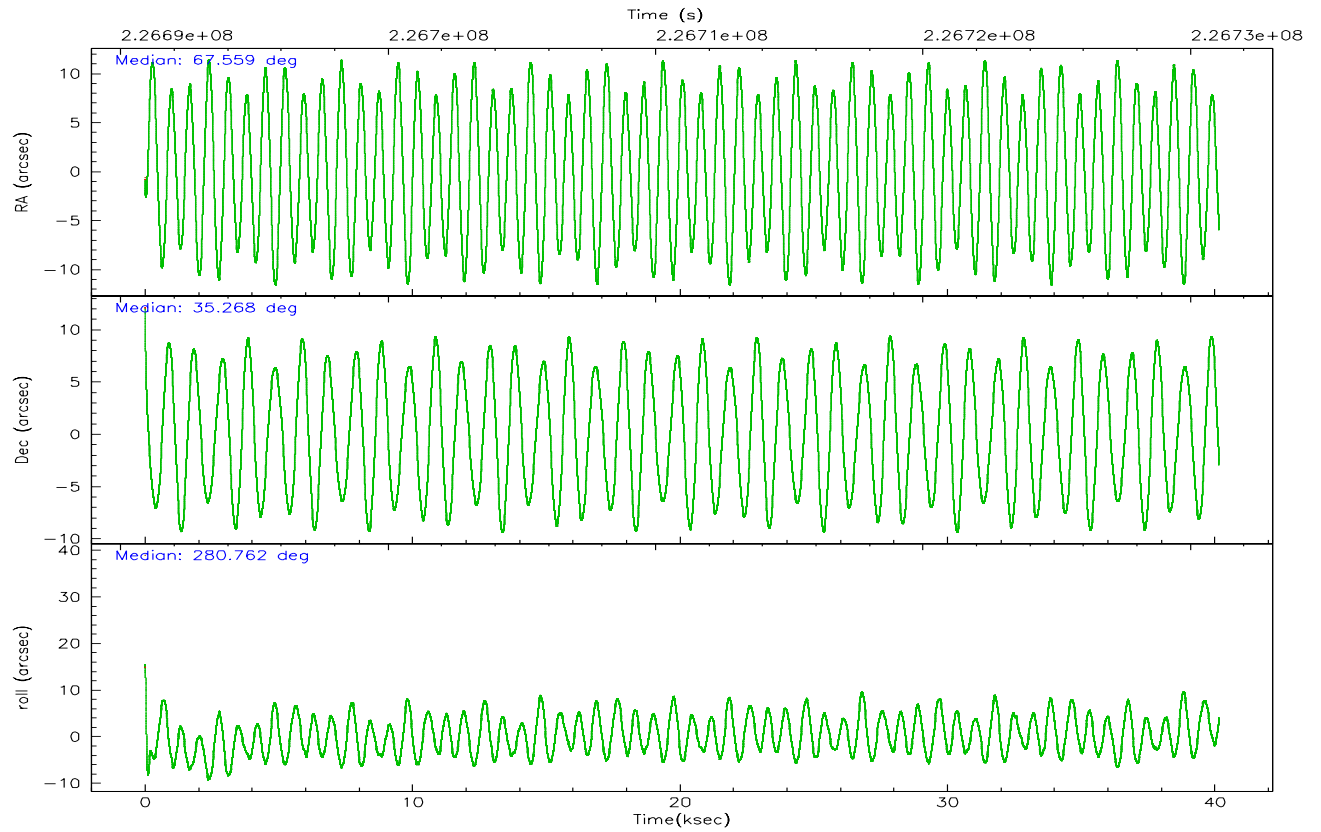
	ccd 0	ccd 1	ccd 2	ccd 3	ccd 6	ccd 7
grade 0 events	9869	13311	10509	13144	8267	6225
	4%	5%	4%	5%	3%	2%
grade 1 events	134	151	161	260	118	141
	0%	0%	0%	0%	0%	0%
grade 2 events	5934	6343	5966	5795	5561	28250
	2%	2%	2%	2%	2%	10%
grade 3 events	2910	3119	2795	2937	2841	6584
	1%	1%	1%	1%	1%	2%
grade 4 events	2705	3240	2798	2890	2888	6473
	1%	1%	1%	1%	1%	2%
grade 5 events	8660	9360	8112	9906	10237	20995
	3%	4%	3%	3%	3%	7%
grade 6 events	4835	5637	4582	4951	5516	67005
	2%	2%	1%	1%	2%	24%
grade 7 events	191414	192049	220162	209268	224584	137124
	84%	82%	86%	83%	86%	50%

## 2.2 Compared Parameters

Parameter	Planned	Actual	Parameter	Planned	Actual
Instrument	ACIS	ACIS	Obspar format version number	6	6
Detector	ACIS-012367	ACIS-012367	Obspar file type	PREDICTED	ACTUAL
Grating	NONE	NONE	Obspar update status	NONE	UPDATED
Data mode	VFAINT	VFAINT	On-chip summing requested	N	N
Observation mode	POINTING	POINTING	Subarray requested	NONE	NONE
Pointing RA	67.536791	67.55880945991683	Alternating exposures requested	N	N
Pointing Dec	35.288969	35.26831808380705	Primary exposure time	0.000000	3.2
Pointing Roll	280.576814	280.7727981376185			
SIM focus pos (mm)	-0.782348	-0.7809083437167272			
SIM defocus (mm)	0	0.001439871863259334			
SIM translation stage pos (mm)	-233.592463	-233.5874344608287			
SIM translation stage offset (mm)	0	-0.005018542100998502			
Observation start time	226691071.184000	226689913.88505			
Observation start date	2005-03-08T17:43:27	2005-03-08T17:25:13			
Observation end time	226731071.184000	226732129.02446			
Observation end date	2005-03-09T04:50:07	2005-03-09T05:08:49			
Read mode	TIMED	TIMED			

## 2.3 Aspect





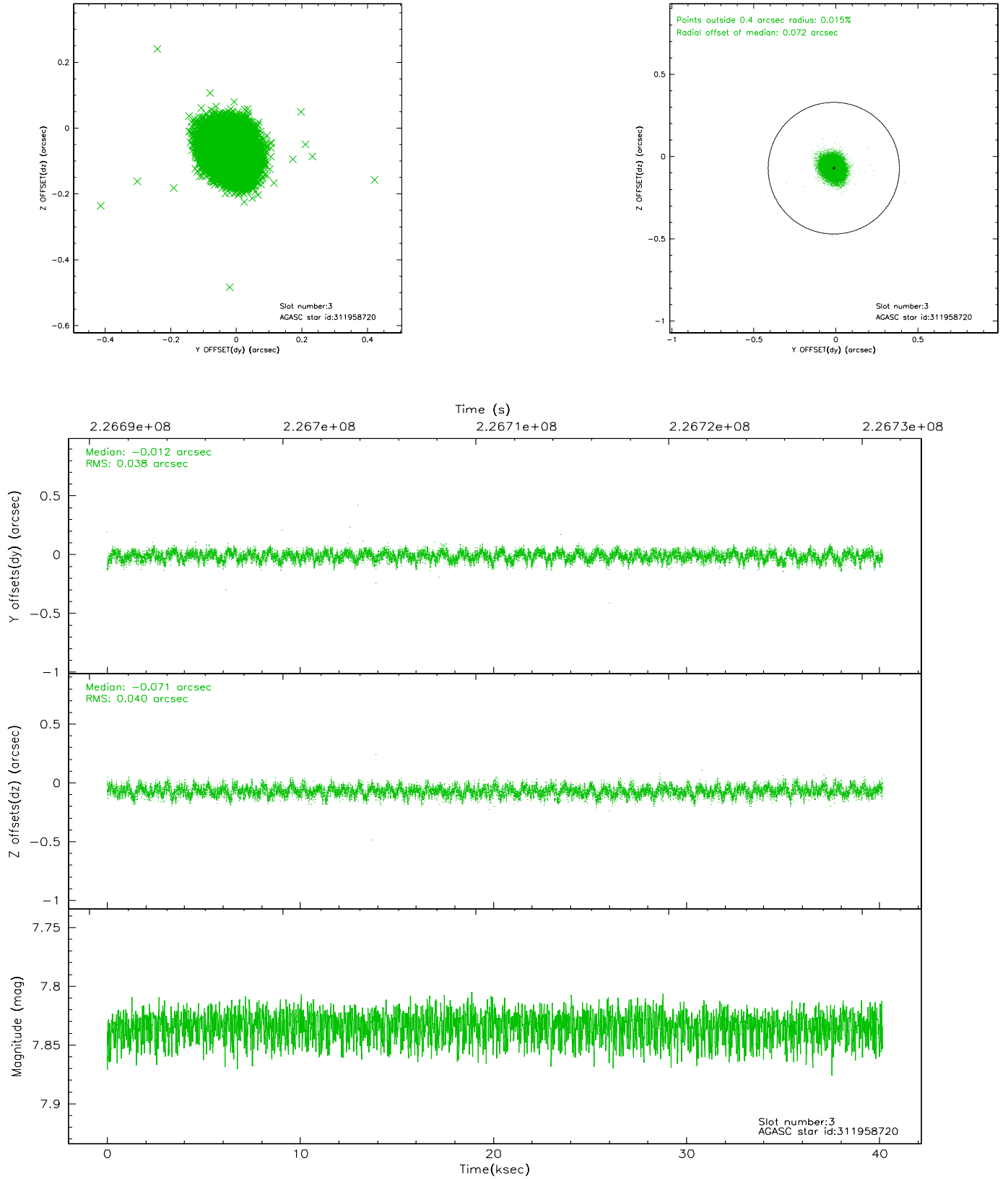
# Slot Statistics

slot	status	id	mag	n_pts	med_dy	med_dz	dr1	dr2	ra	dec	mean_y	mean_z
0	FID	ACIS-I-1	7.24	9795	-0.006	0.013	0.027	0.057	0.000000	0.000000	934.43	-833.66
1	FID	ACIS-I-4	7.17	9793	0.050	0.016	0.024	0.044	0.000000	0.000000	2154.54	1066.13
2	FID	ACIS-I-5	7.22	9793	-0.145	0.041	0.017	0.034	0.000000	0.000000	-1813.68	1064.03
3	GUIDE	311958720	7.83	19591	-0.012	-0.071	0.058	0.093	67.019976	35.020500	667.12	-1674.26
4	GUIDE	311963432	9.83	19508	0.018	0.052	0.119	0.191	66.894392	34.792266	1403.99	-2193.79
5	GUIDE	311963616	7.51	19590	-0.003	-0.008	0.058	0.093	67.301368	35.265783	-45.15	-695.31
6	GUIDE	312084320	9.62	19576	0.113	-0.059	0.114	0.195	67.603566	35.117886	642.04	80.43
7	GUIDE	312086640	8.67	19587	-0.116	0.085	0.069	0.114	67.746042	35.599832	-988.74	808.47

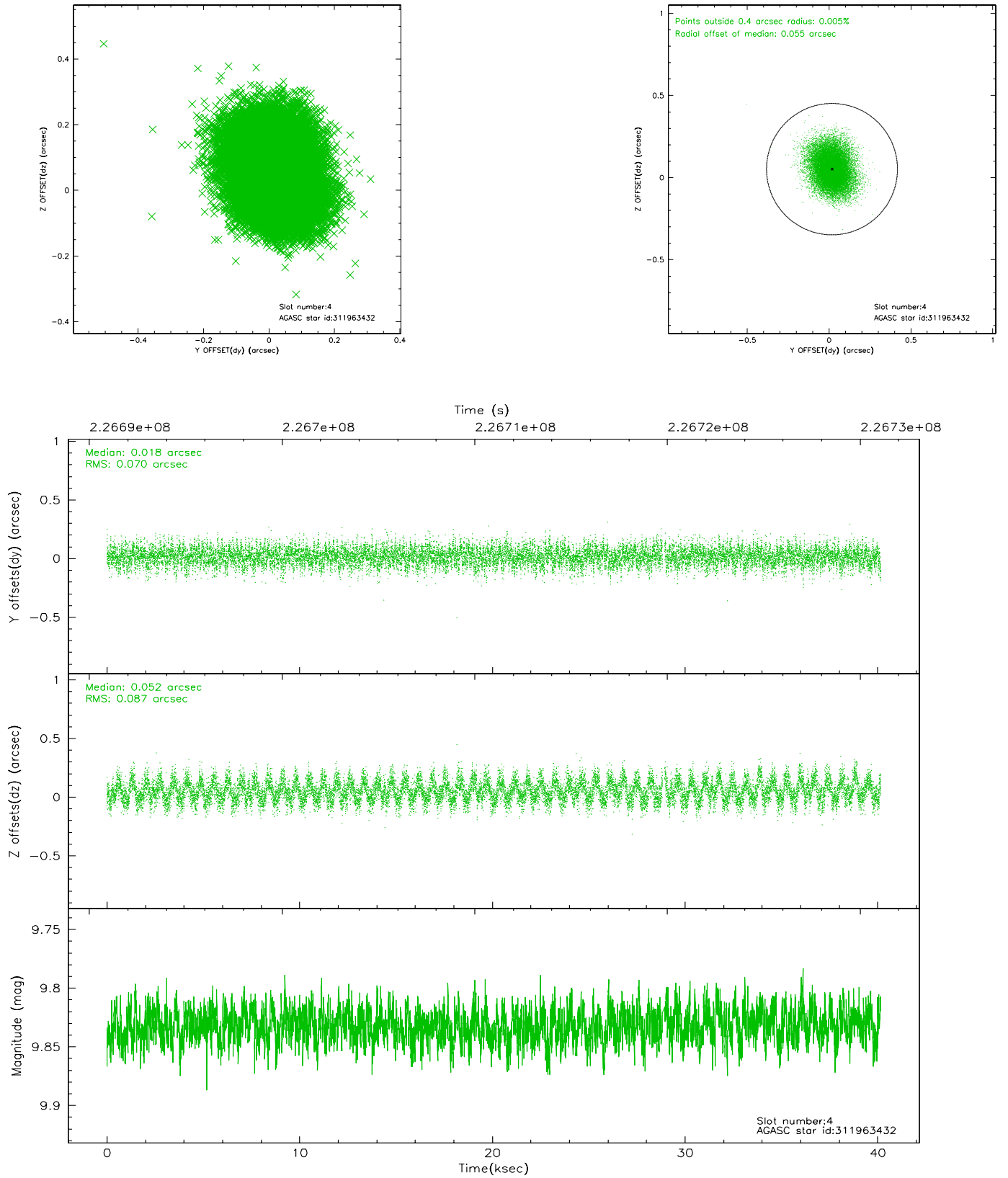


## 2.4 Star Slots

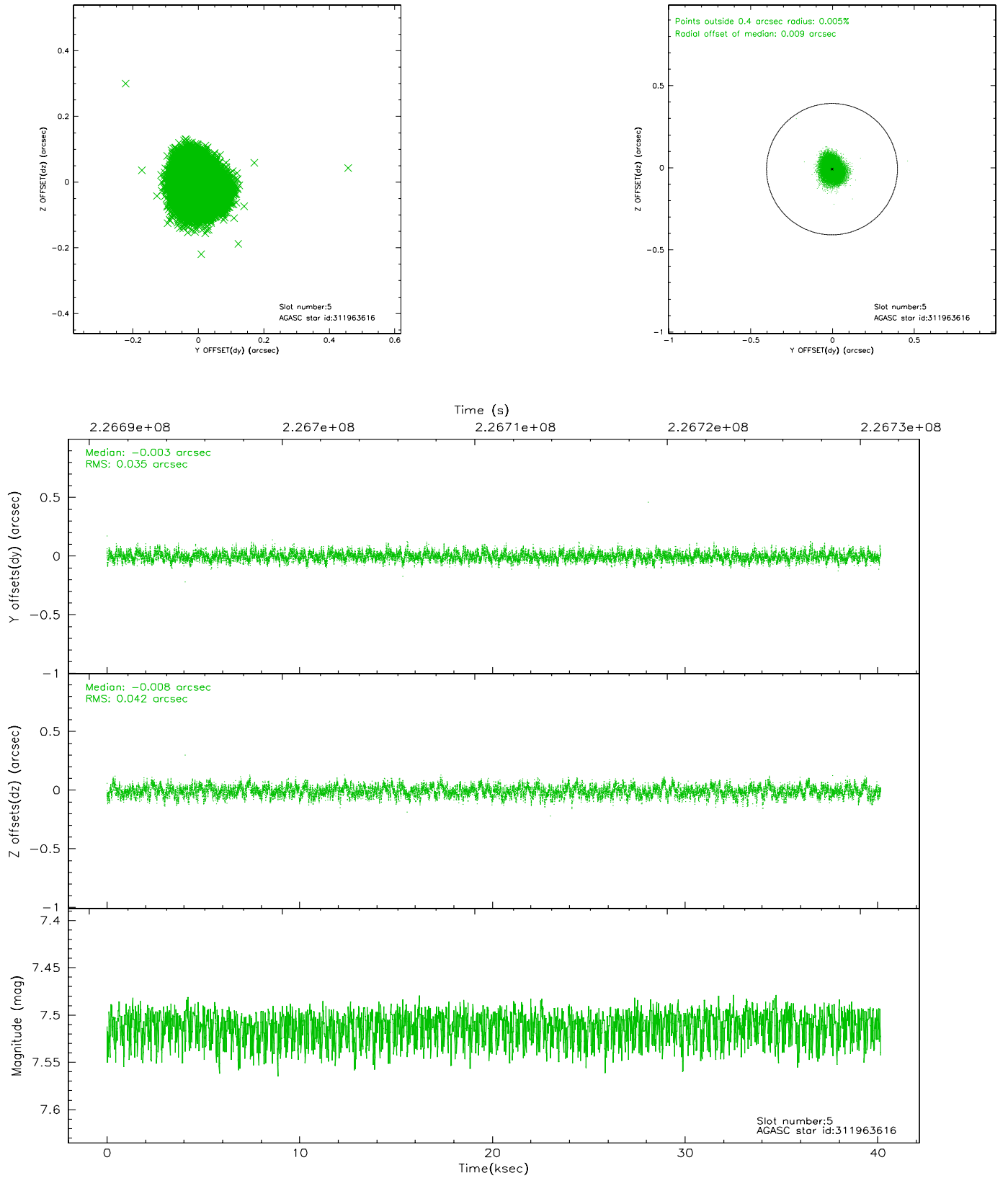
### 2.4.1 Slot 3



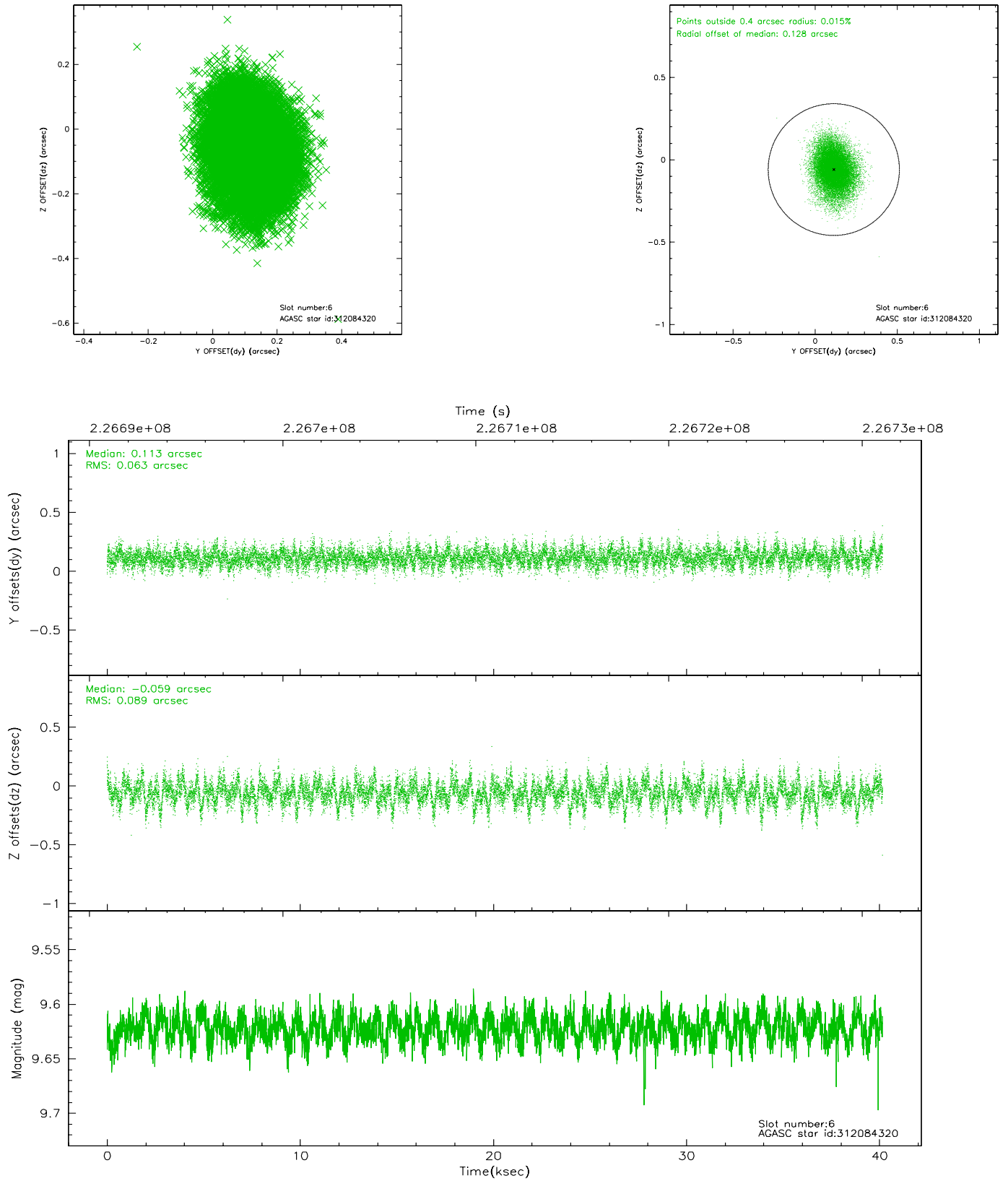
## 2.4.2 Slot 4



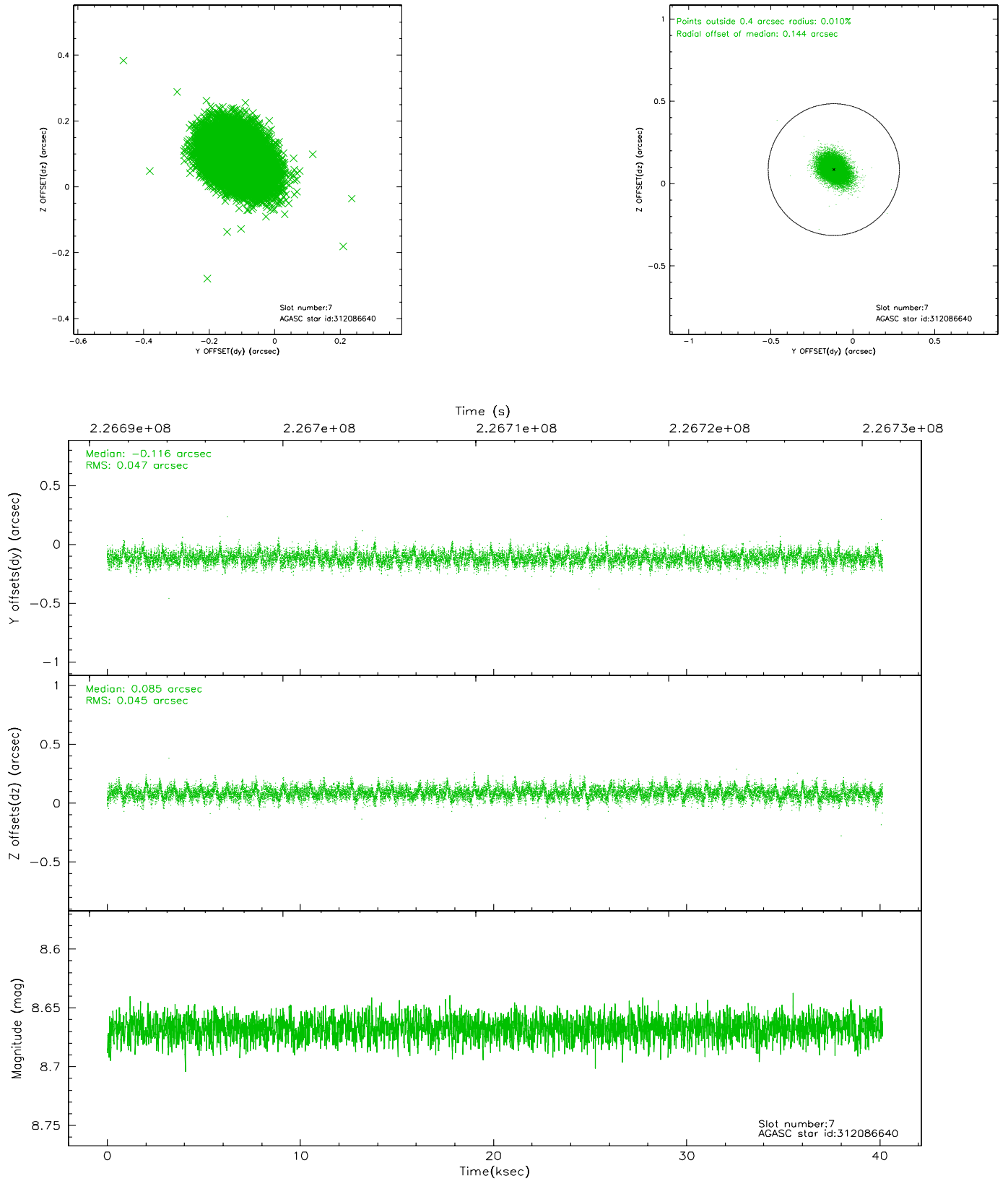
### 2.4.3 Slot 5



## 2.4.4 Slot 6

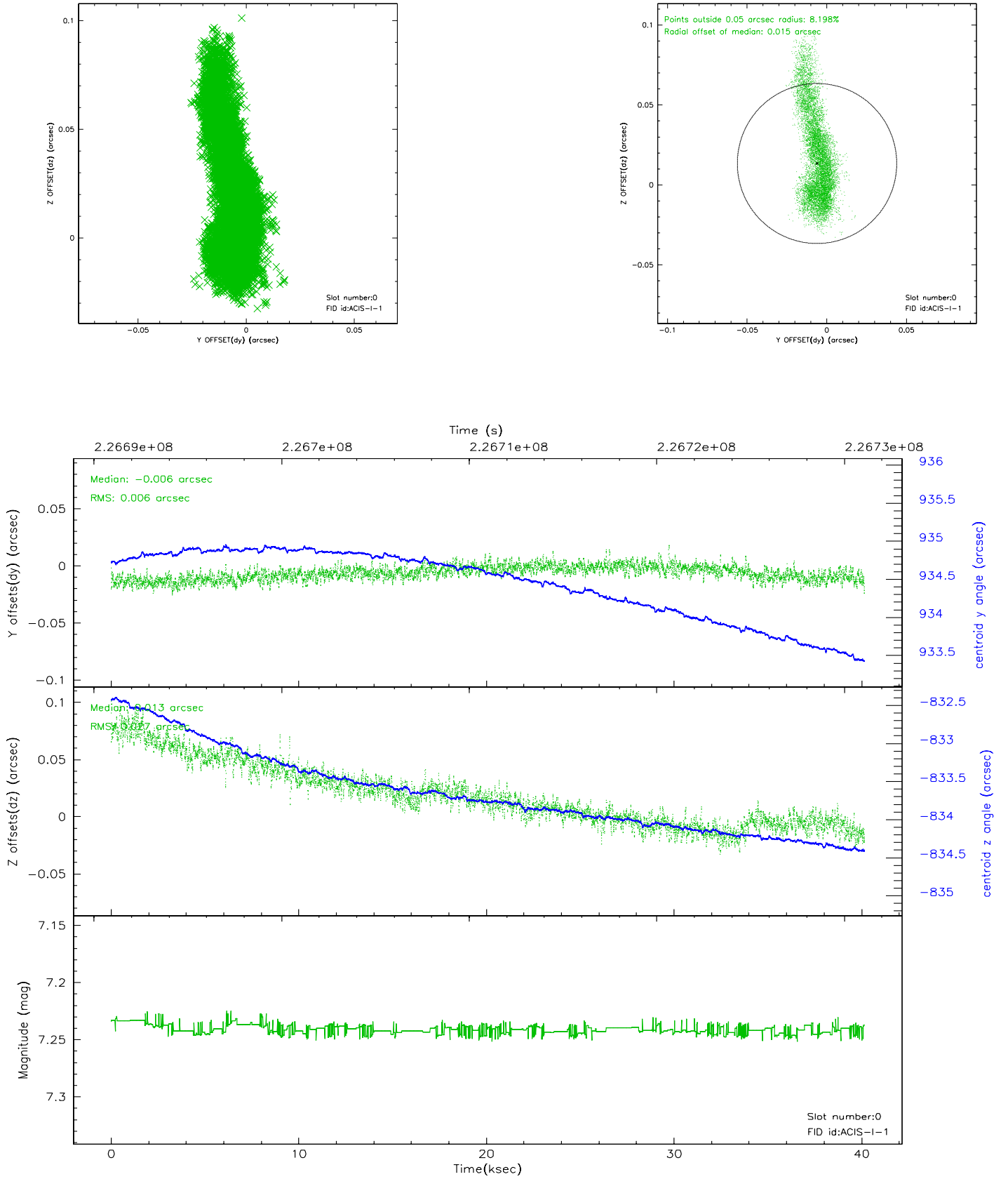


## 2.4.5 Slot 7

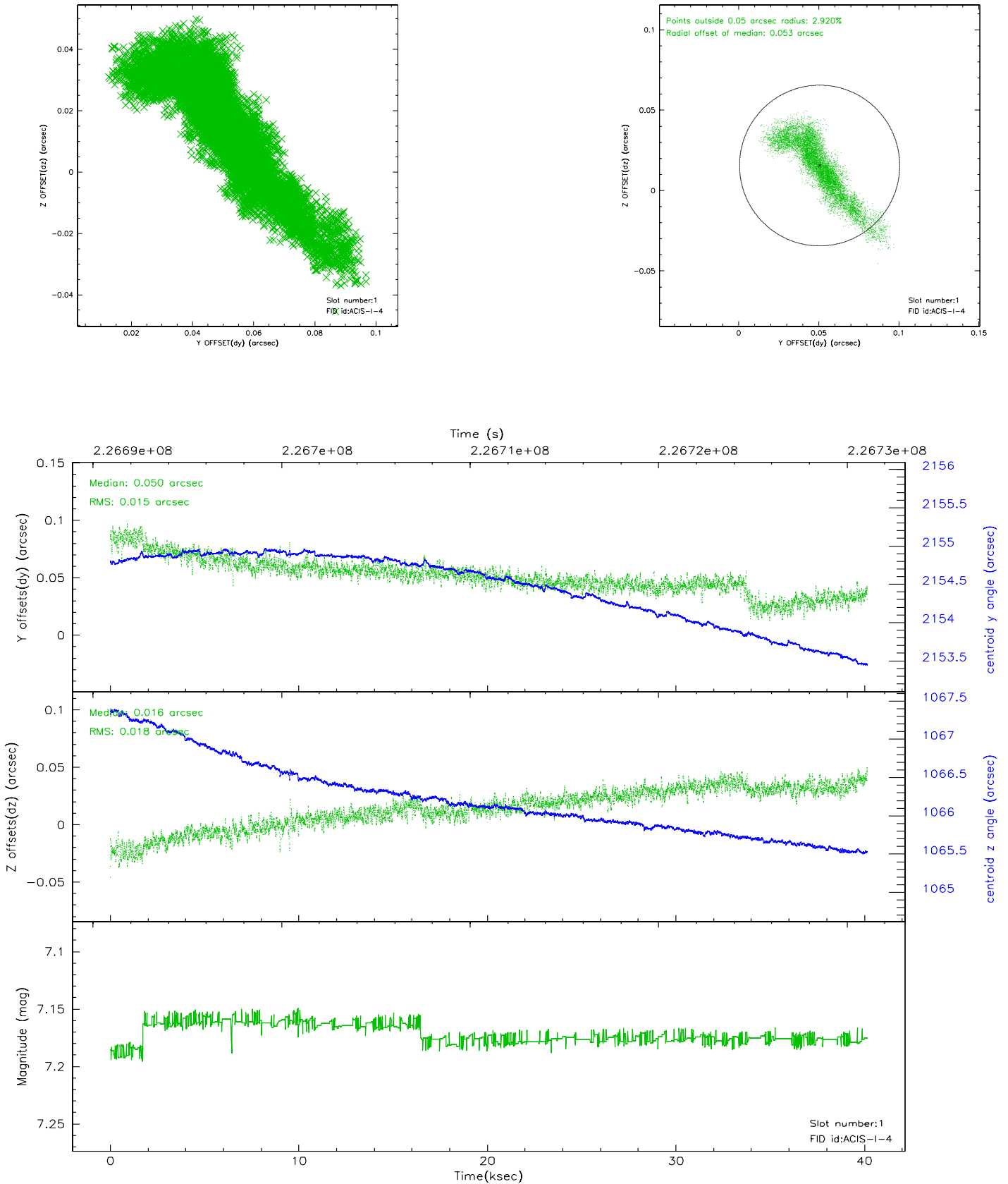


## 2.5 FID Slots

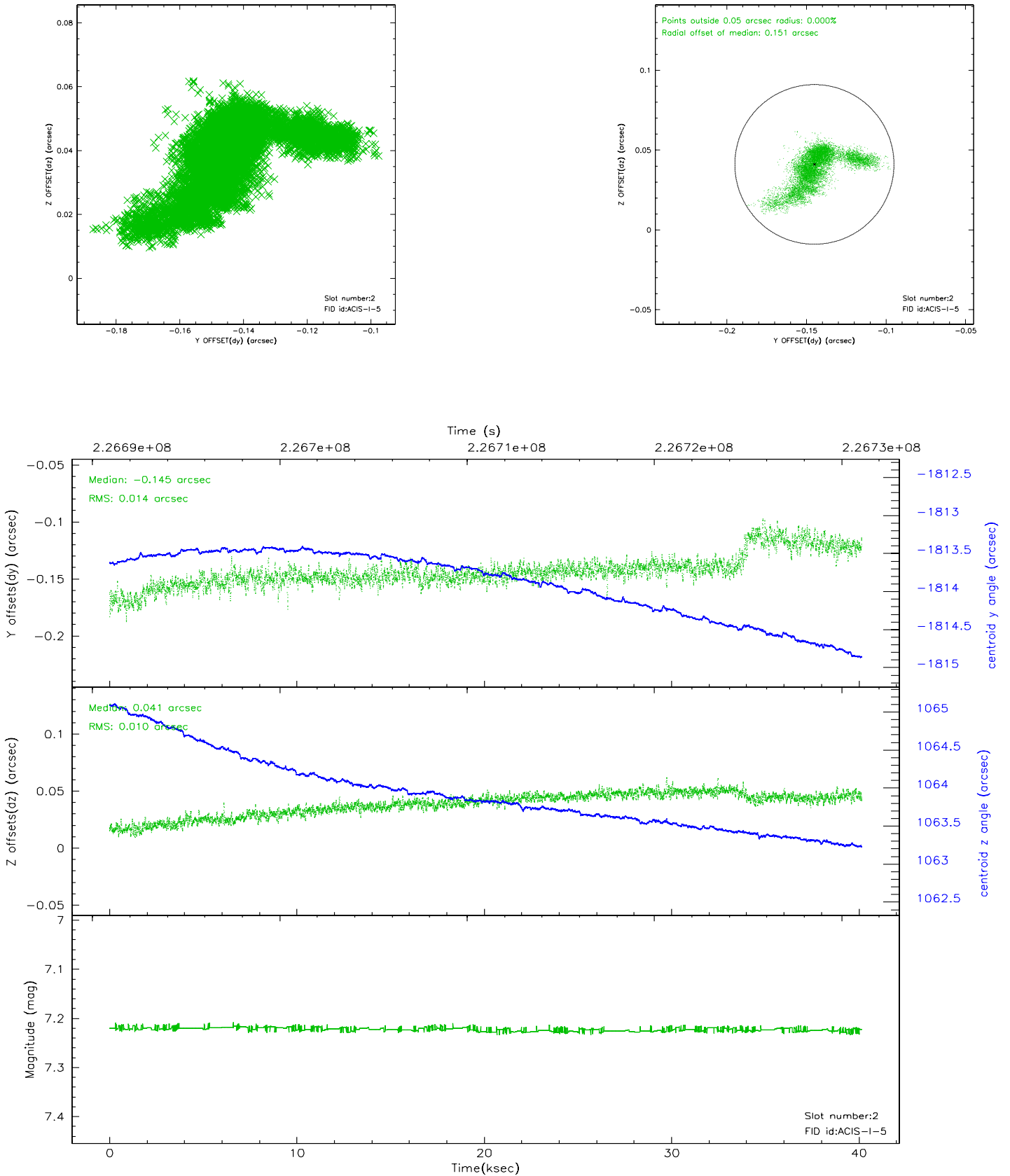
### 2.5.1 Slot 0



## 2.5.2 Slot 1

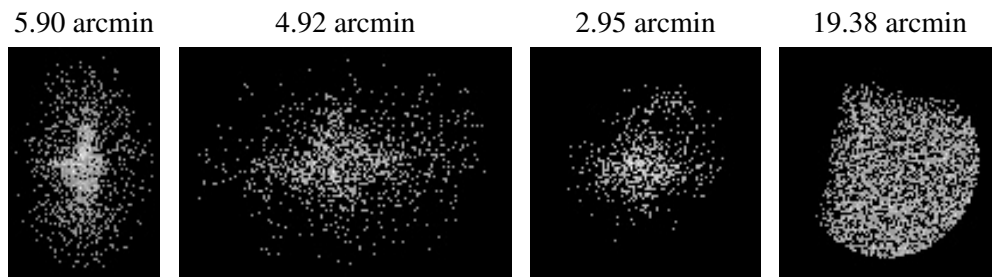


### 2.5.3 Slot 2





### 3 Point Sources



## A Summary

### A.1 Status

V&V Scientist	Jen Lauer
V&V Date (YYYY-MM-DD)	2006.02.27
V&V Edition	1
V&V Disposition and Status	OK
V&V Charge Time	40.14711

### A.2 Comments