

# V&V Reference Report

## L2 ASCDS Version : 8.5.1

Observation 5418 - L2 Version 3  
Chandra X-Ray Center

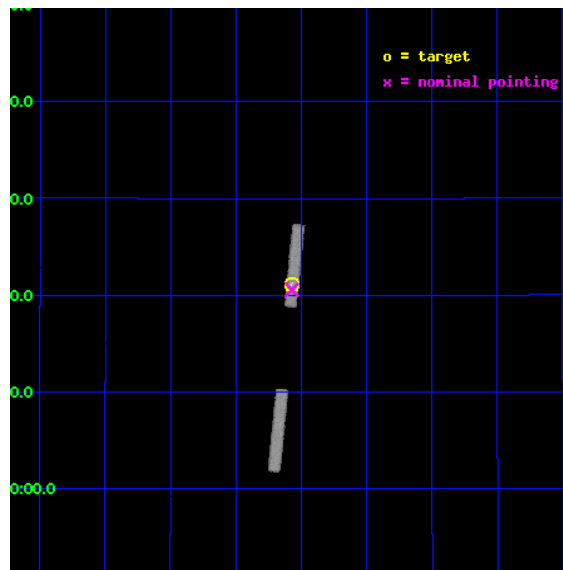
L2 Processing Date : Dec 15 2012

## Contents

<b>1</b>	<b>Front</b>	<b>2</b>
<b>2</b>	<b>OBI</b>	<b>3</b>
2.1	OBI . . . . .	3
2.1.1	Images . . . . .	3
2.1.2	Bias . . . . .	3
2.1.3	Parameters . . . . .	4
2.1.4	Events . . . . .	4
2.2	Compared Parameters . . . . .	5
2.3	Aspect . . . . .	6
2.4	Star Slots . . . . .	9
2.4.1	Slot 3 . . . . .	9
2.4.2	Slot 4 . . . . .	10
2.4.3	Slot 5 . . . . .	11
2.4.4	Slot 6 . . . . .	12
2.5	FID Slots . . . . .	13
2.5.1	Slot 0 . . . . .	13
2.5.2	Slot 1 . . . . .	14
2.5.3	Slot 2 . . . . .	15
<b>A</b>	<b>Summary</b>	<b>16</b>
A.1	Status . . . . .	16
A.2	Comments . . . . .	16

# 1 Front

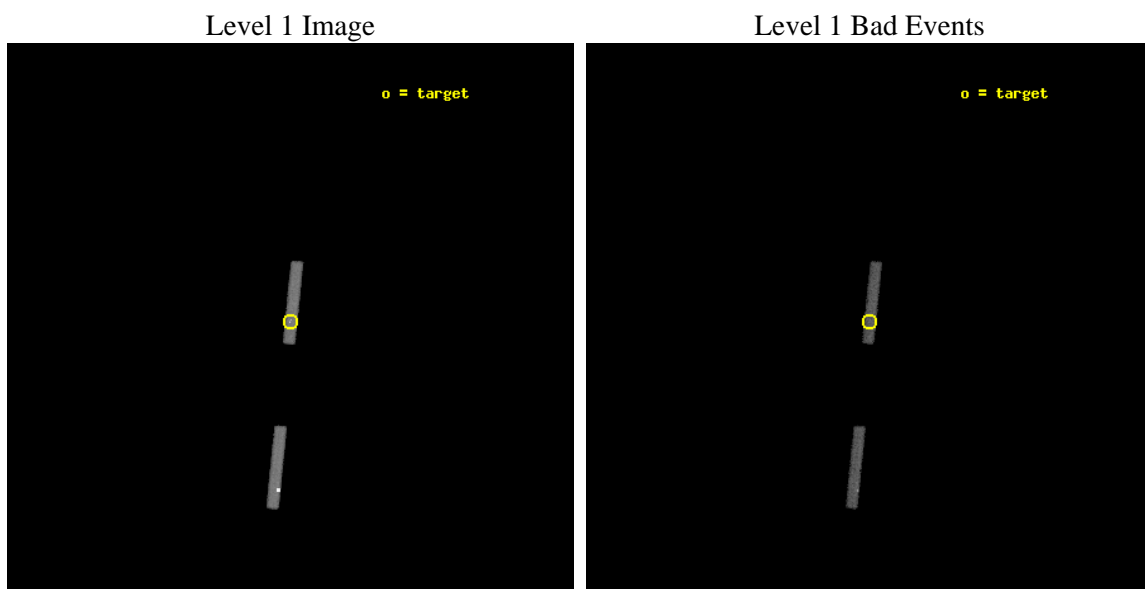
seq_num	200351	Sequence number
obs_id	5418	Observation id
title	Untangling the Accretion Spots on Classical T Tauri Stars	Proposal
observer	Dr. Andisheh Mahdavi	Principal investigator
object	GK Tau	Source name
dtcycle	0	&#160
cycle	P	events from which exps? Prim/Second/Both
ra_targ	68.39375	Observer's specified target RA [deg]
dec_targ	24.3525	Observer's specified target Dec [deg]
ra_nom	68.392945990169	Nominal RA [deg]
dec_nom	24.342839857136	Nominal Dec [deg]
roll_nom	275.73553328144	Nominal Roll [deg]
revision	3	Processing version of data
ontime	15029.917920023	Sum of GTIs [s]
liveltime	13889.839863987	Livetime [s]
ontime5	15029.917920023	Sum of GTIs [s]
ontime7	15029.917920023	Sum of GTIs [s]
l2events	18724	Number of level 2 events



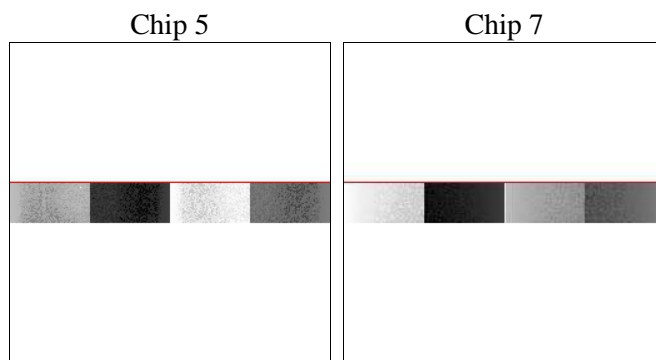
## 2 OBI

### 2.1 OBI

#### 2.1.1 Images



#### 2.1.2 Bias



### 2.1.3 Parameters

obi_num	0	Obi number	sched_exp_time	15000.000000	[s] Scheduled observation exposure time
ascdsver	8.5.1	Processing system revision	ontime	15029.917920023	Sum of GTIs [s]
caldsver	4.5.5	&#160	ontime5	15029.917920023	Sum of GTIs [s]
date	2012-12-15T23:01:03	Date and time of file creation	ontime7	15029.917920023	Sum of GTIs [s]
revision	3	Processing version of data	l1events	75743	Number of level 1 events

### 2.1.4 Events

	<b>ccd 5</b>	<b>ccd 7</b>
level 1 events	53121	22622
rejected events	16207	12602
rejected %	30%	55%

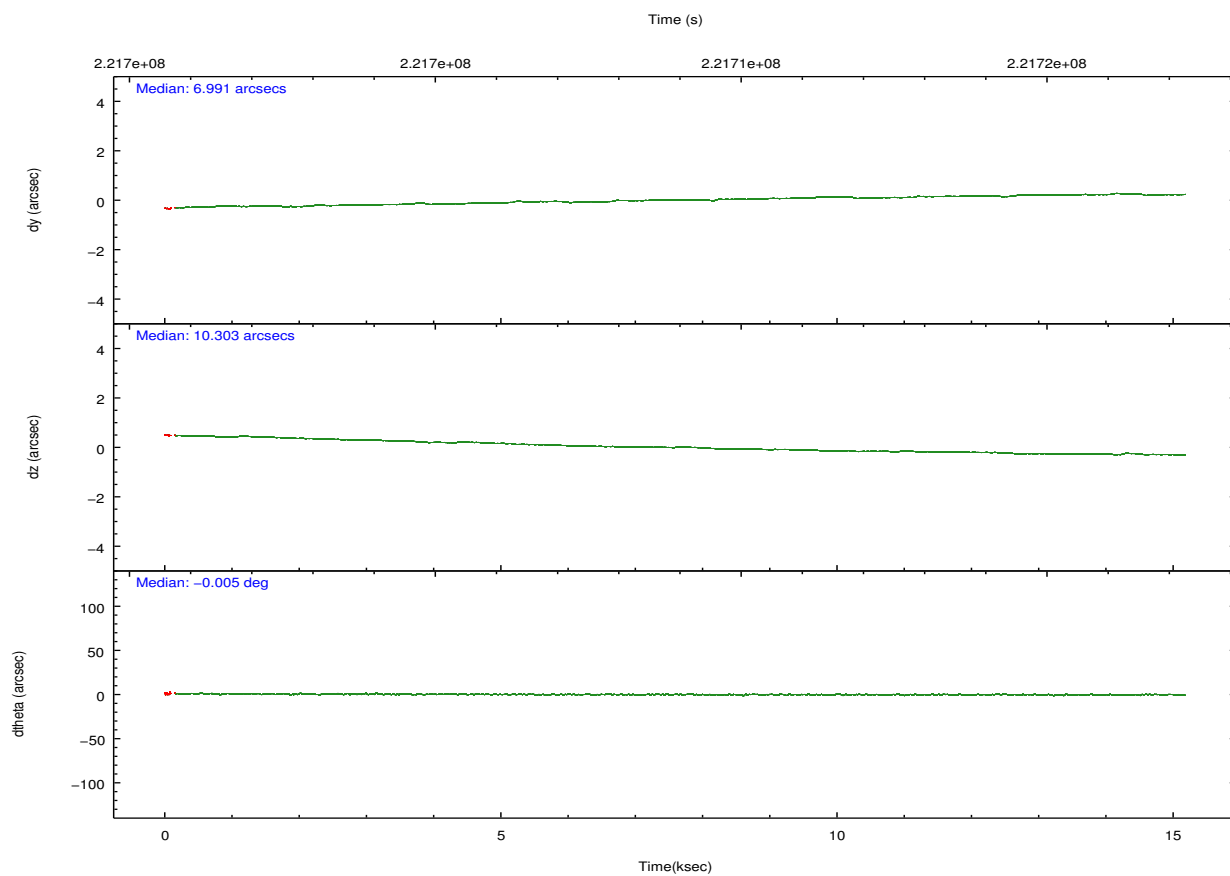
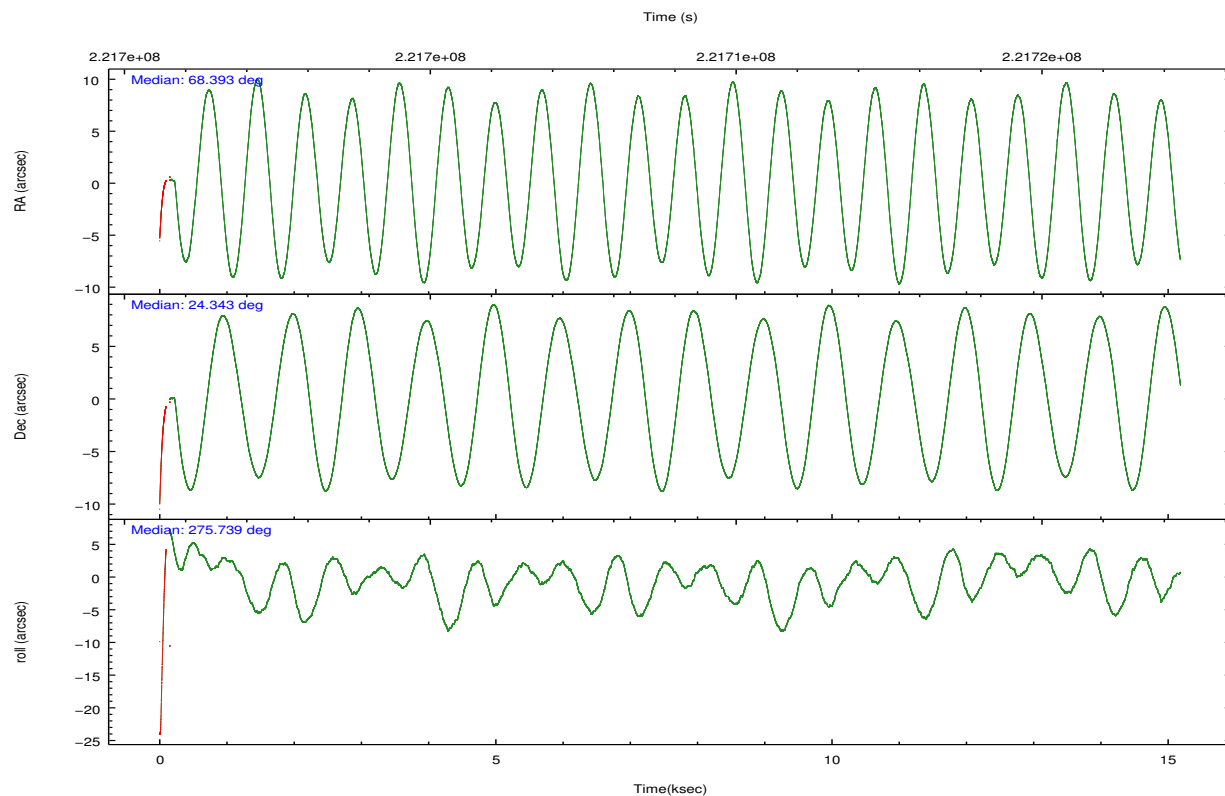
	<b>ccd 5</b>	<b>ccd 7</b>
grade 0 events	26416	1441
	49%	6%
grade 1 events	88	19
	0%	0%
grade 2 events	7570	2308
	14%	10%
grade 3 events	902	1354
	1%	5%
grade 4 events	1445	1362
	2%	6%
grade 5 events	1926	2057
	3%	9%
grade 6 events	5168	4619
	9%	20%
grade 7 events	9606	9462
	18%	41%



## 2.2 Compared Parameters

Parameter	Planned	Actual	Parameter	Planned	Actual
Instrument	ACIS	ACIS	Obspar format version number	7	7
Detector	ACIS-57	ACIS-57	Obspar file type	PREDICTED	ACTUAL
Grating	NONE	NONE	Obspar update status	NONE	UPDATED
Data mode	FAINT	FAINT	Number of optional ACIS chips dropped	0	0
Observation mode	POINTING	POINTING	On-chip summing requested	N	N
[deg] Pointing RA	68.375152	68.39294599016861	Subarray requested	CUSTOM	1/8
[deg] Pointing Dec	24.364744	24.34283985713639	Subarray start row	449	449
[deg] Pointing Roll	275.586263	275.7355332814436	Subarray row count	128	128
[mm] SIM focus pos	-0.684267	-0.6828225247311905	Alternating exposures requested	N	N
[mm] SIM defocus	0	0.001444936568705701	[s] Primary exposure time	0.000000	0.5
[mm] SIM translation stage pos	-190.132523	-190.1400660498719			
[mm] SIM translation stage offset	0	0.00754346686406393			
[s] Observation start time (MET)	221701511.184000	221699608.39692			
Observation start date	2005-01-09T23:44:07	2005-01-09T23:13:28			
[s] Observation end time (MET)	221716511.184000	221717377.79772			
Observation end date	2005-01-10T03:54:07	2005-01-10T04:09:37			
Read mode	TIMED	TIMED			

## 2.3 Aspect

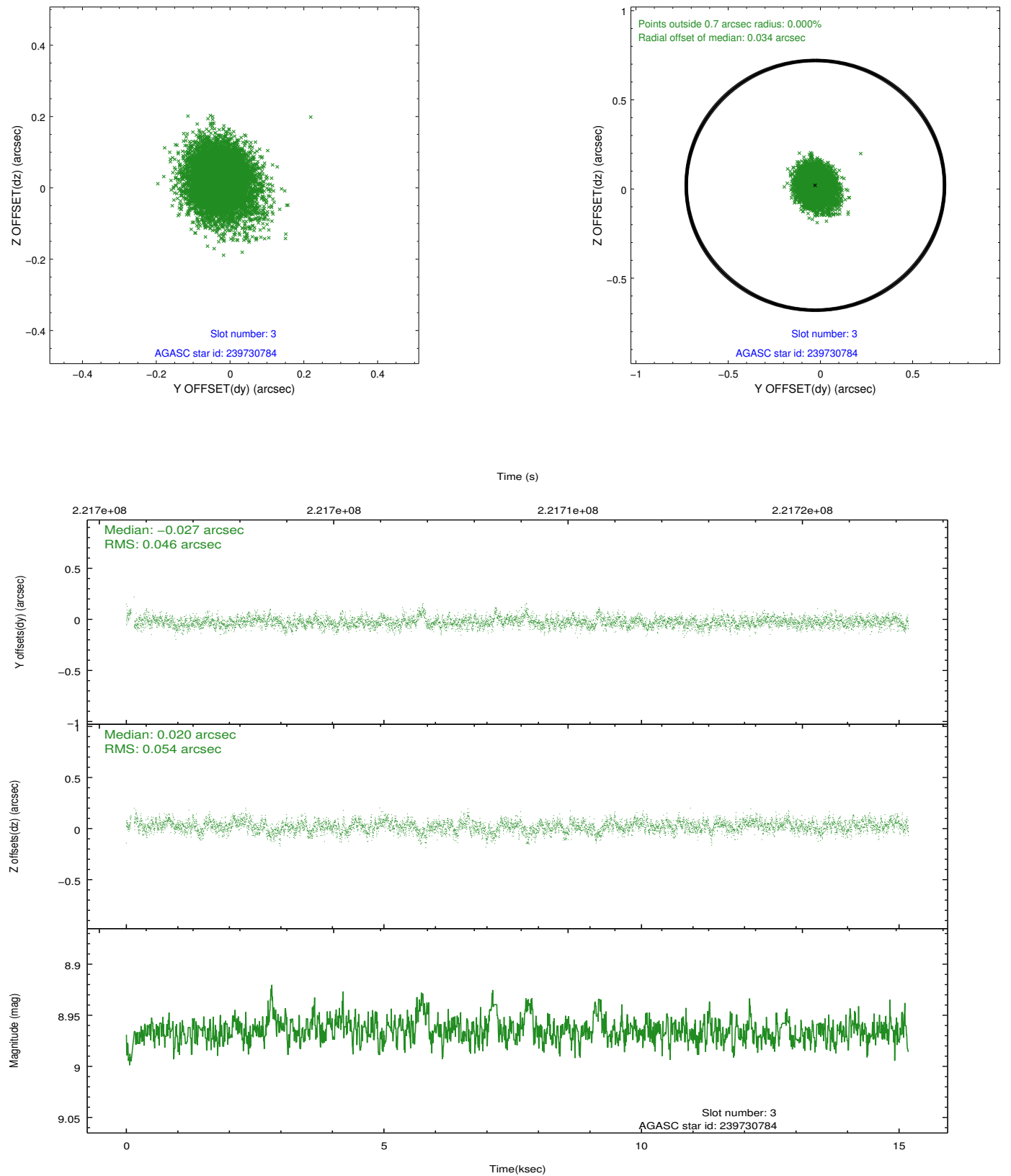


Slot Statistics

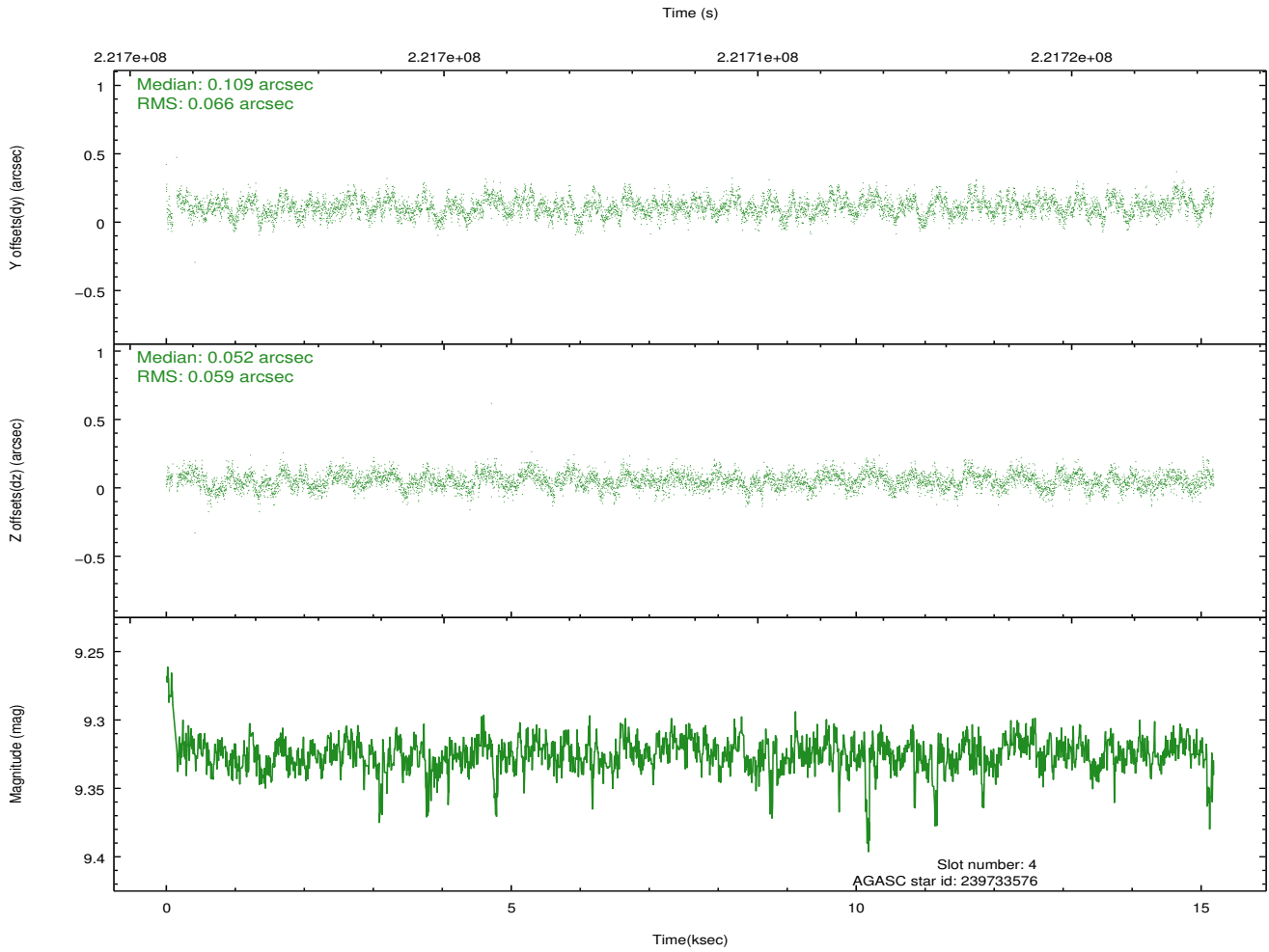
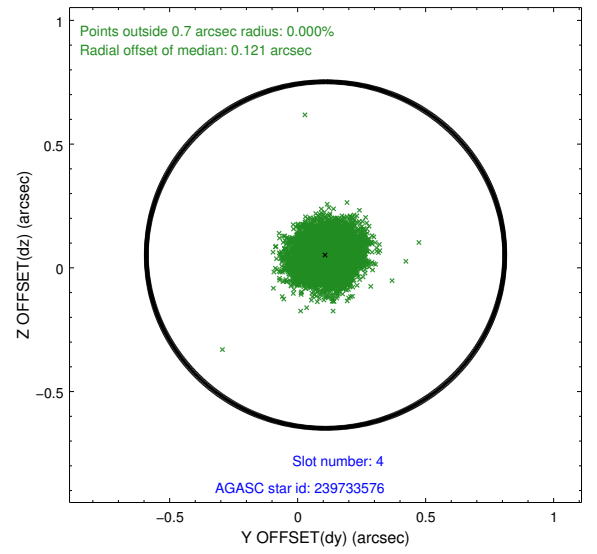
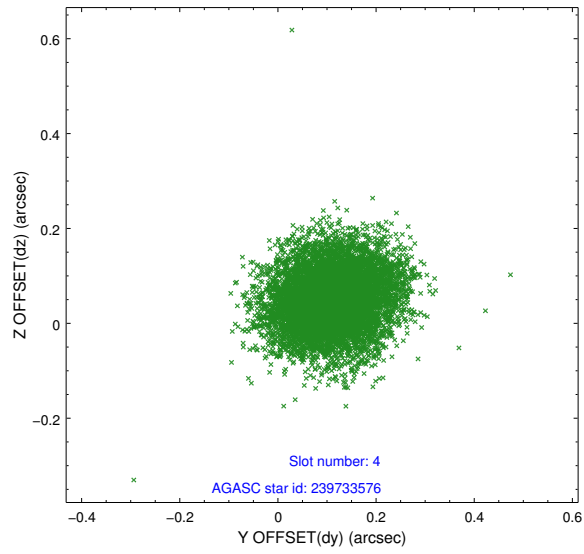
	status	id	mag	n_pts	med_dy	med_dz	drl
	FID	ACIS-S-2	7.10	3689	-0.053	-0.017	0.008
	FID	ACIS-S-4	7.20	3688	0.084	0.030	0.008
	FID	ACIS-S-5	7.23	3690	-0.062	-0.004	0.012
	GUIDE	239730784	8.97	7378	-0.027	0.020	0.074
	GUIDE	239733576	9.33	7372	0.109	0.052	0.095
	GUIDE	240255024	9.20	7351	-0.023	-0.092	0.091
	GUIDE	240263016	8.65	7375	-0.062	0.024	0.066
0.0000.0000.0000.0000000.00000000.000.00							

## 2.4 Star Slots

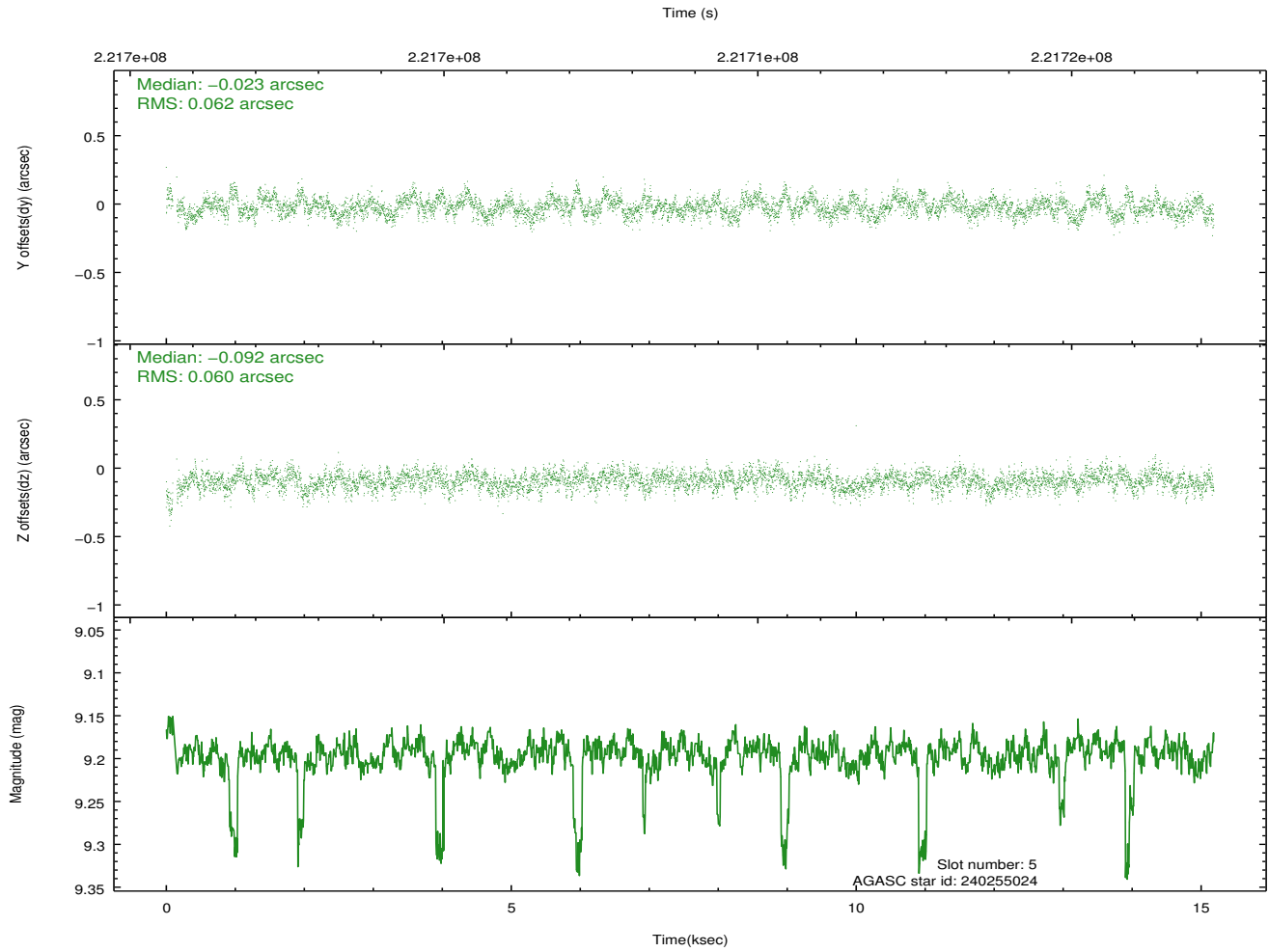
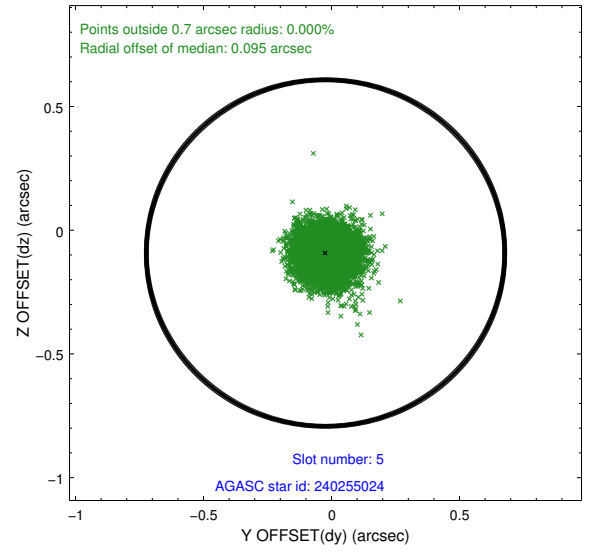
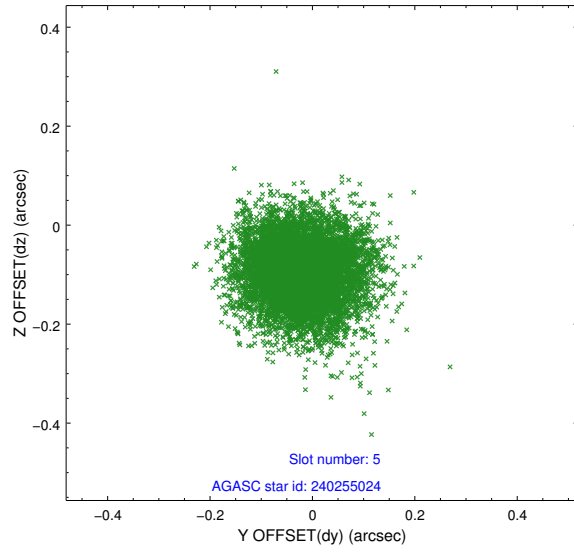
### 2.4.1 Slot 3



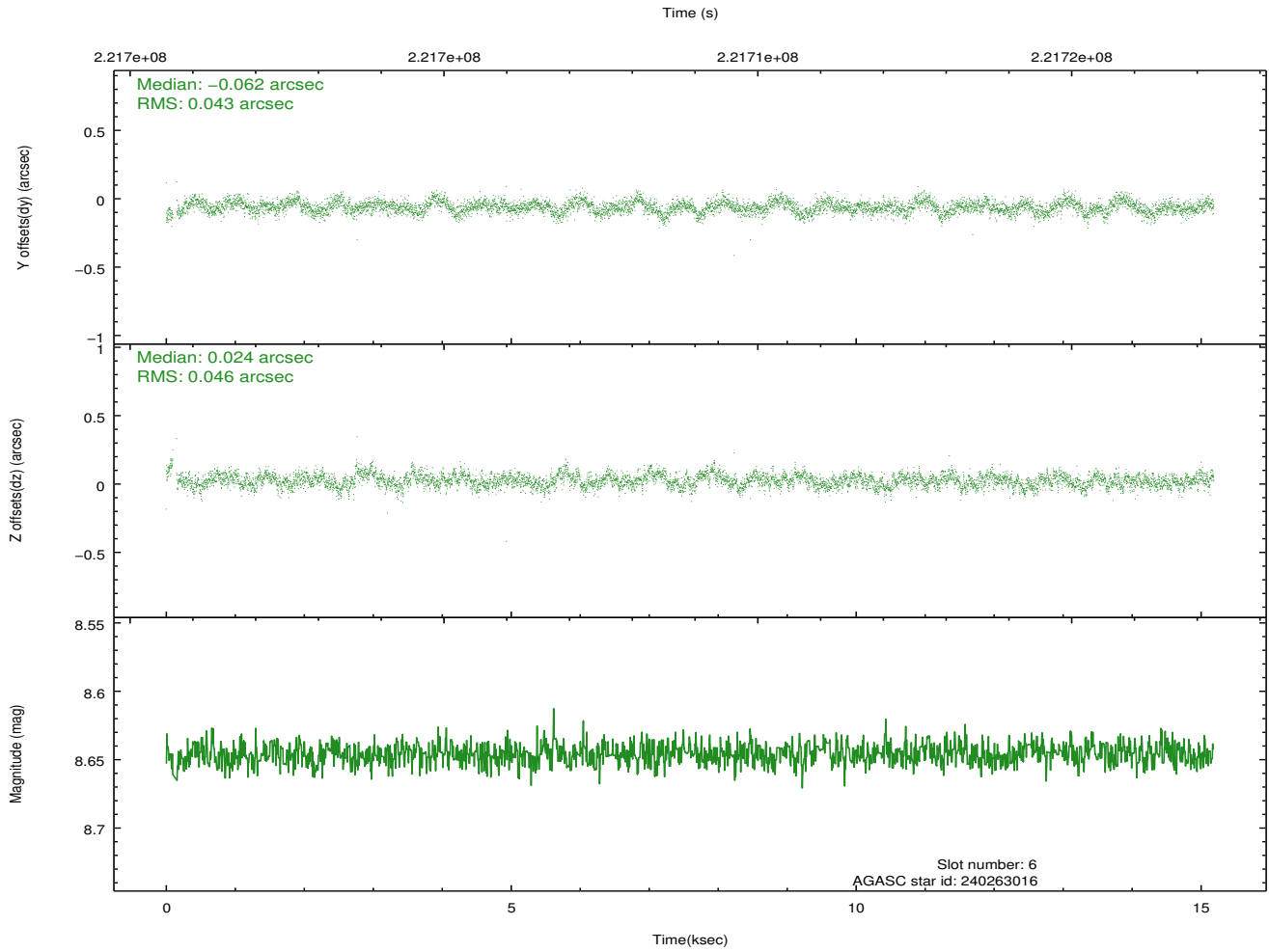
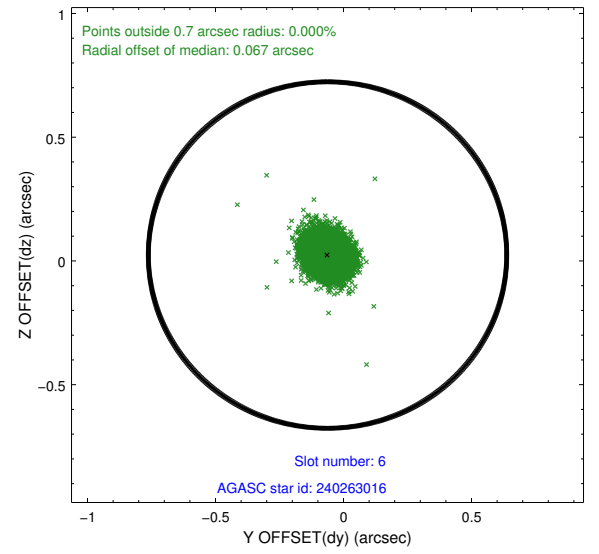
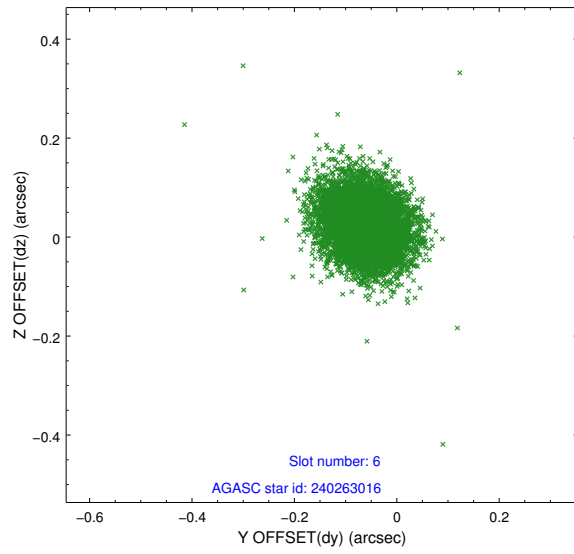
## 2.4.2 Slot 4



### 2.4.3 Slot 5



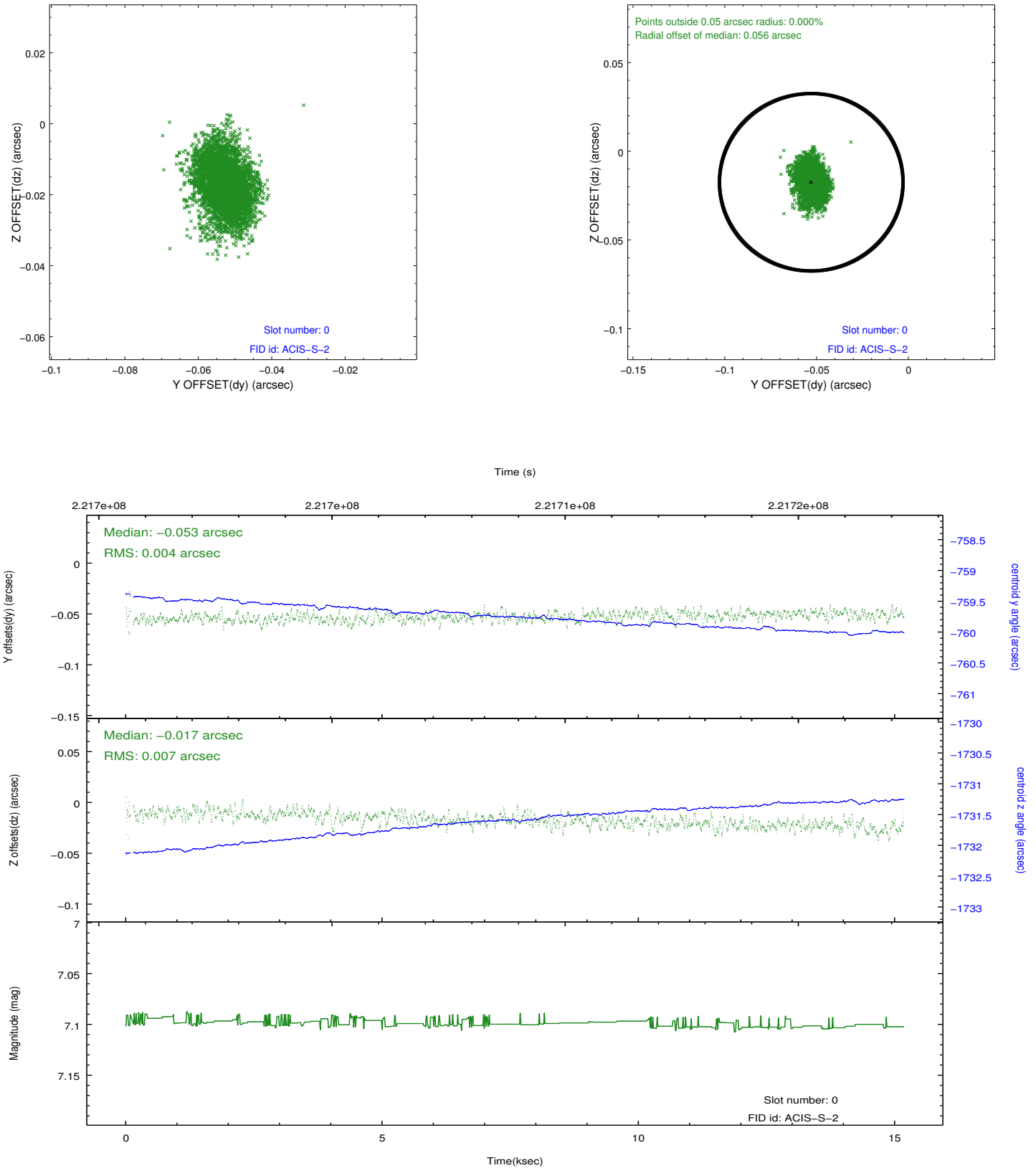
## 2.4.4 Slot 6



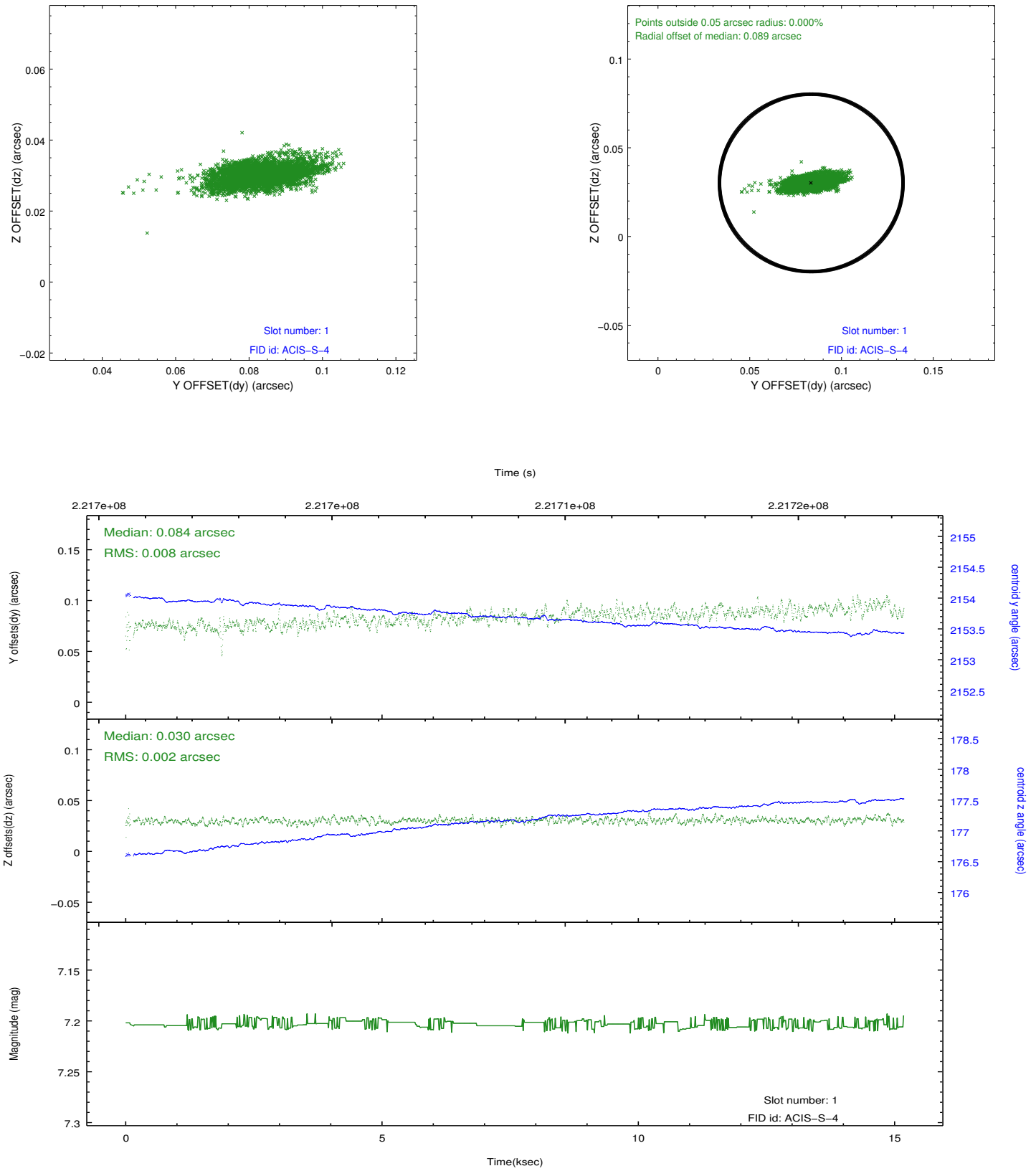


## 2.5 FID Slots

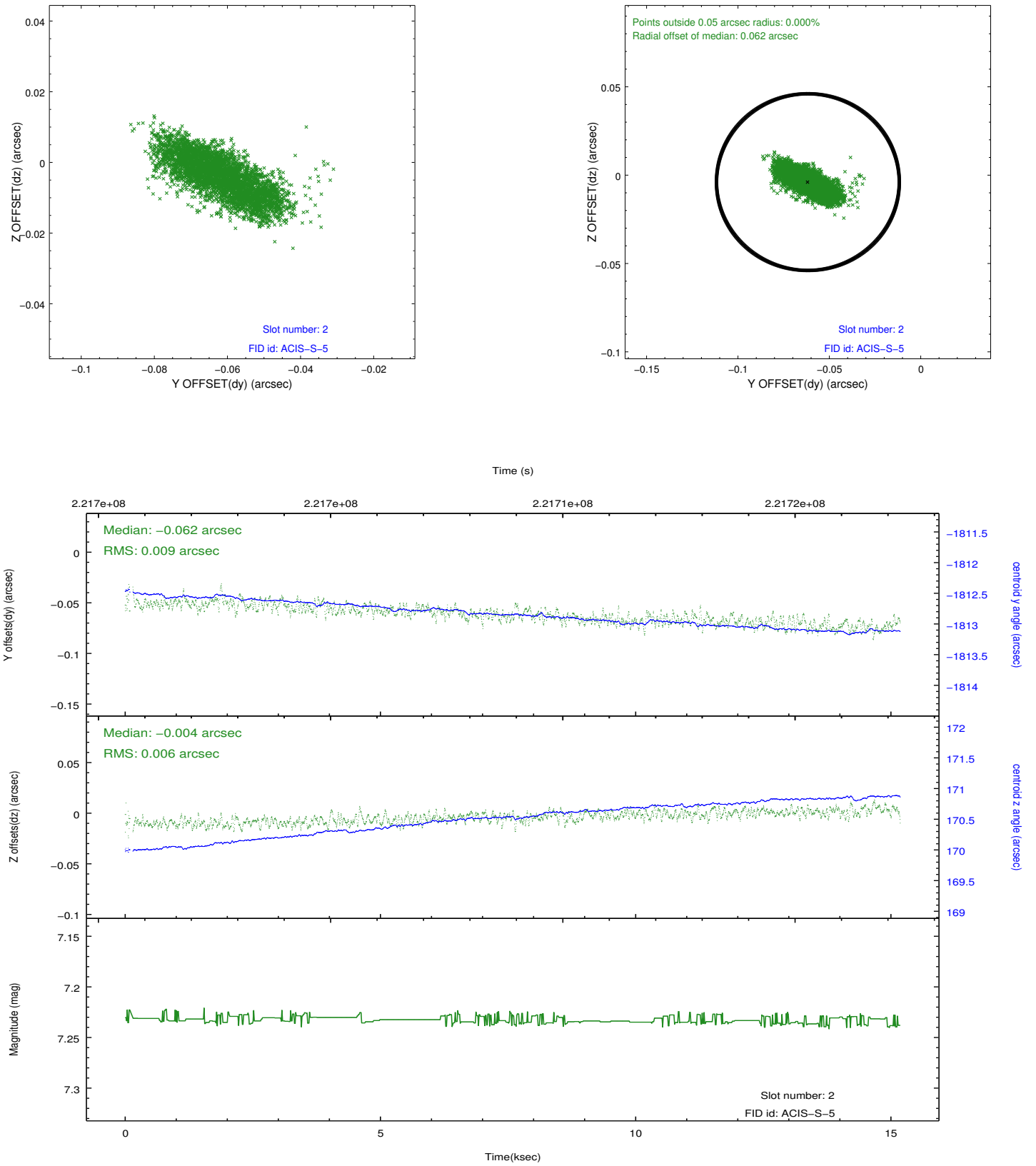
### 2.5.1 Slot 0



## 2.5.2 Slot 1



### 2.5.3 Slot 2



## A Summary

### A.1 Status

V&V Scientist	Jen Lauer
V&V Date (YYYY-MM-DD)	2013.01.08
V&V Edition	1
V&V Disposition and Status	OK
V&V Charge Time	15.02991

### A.2 Comments