

V&V Reference Report

L2 ASCDS Version : 7.6.8

Observation 5248 - L2 Version 001
Chandra X-Ray Center

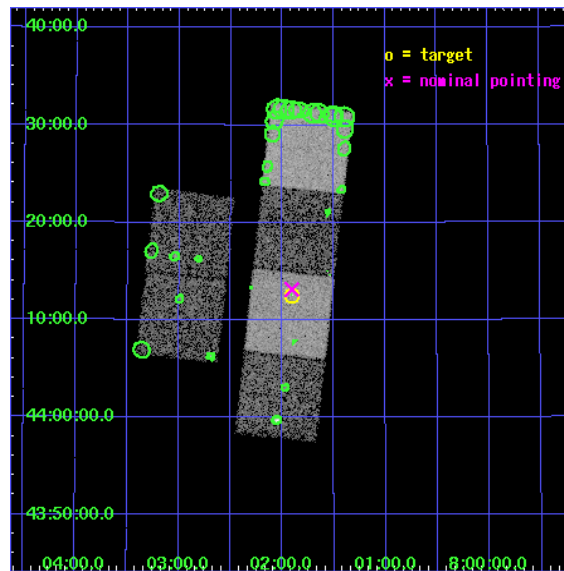
L2 Processing Date : Jun 26 2006

Contents

1	Front	2
2	OBI	3
2.1	OBI	3
2.1.1	Images	3
2.1.2	Bias	3
2.1.3	Parameters	4
2.1.4	Events	4
2.2	Compared Parameters	5
2.3	Aspect	6
2.4	Star Slots	9
2.4.1	Slot 3	9
2.4.2	Slot 4	10
2.4.3	Slot 5	11
2.4.4	Slot 6	12
2.4.5	Slot 7	13
2.5	FID Slots	14
2.5.1	Slot 0	14
2.5.2	Slot 1	15
2.5.3	Slot 2	16
3	Point Sources	17
A	Summary	18
A.1	Status	18
A.2	Comments	18

1 Front

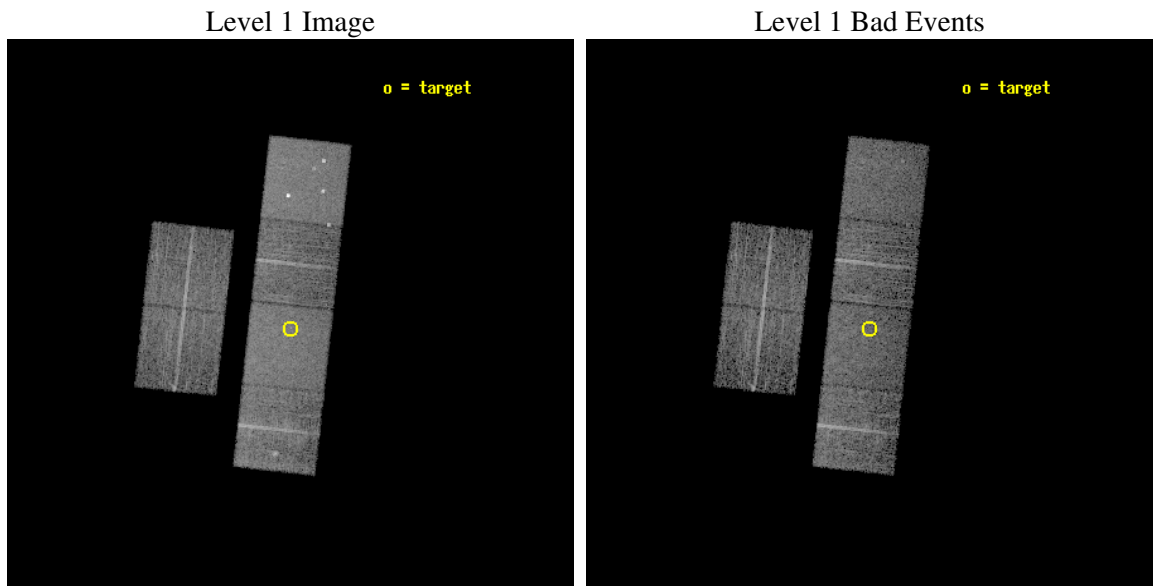
seq_num	701011
obs_id	5248
title	Chandra Observations of Optically Selected Type 2 Quasar Candidates
observer	Prof. Michael Strauss
object	SDSSJ080154.24+441233.9
dtcycle	0
cycle	P
ra_targ	120.475833
dec_targ	44.209417
ra_nom	120.47671054391
dec_nom	44.219061473906
roll_nom	96.325365241756
revision	2
ontime	9942.3999629617
livetime	9816.5033080361
ontime2	9942.3999629617
ontime3	9939.1589826941
ontime5	9942.3999629617
ontime6	9942.3999629617
ontime7	9942.3999629617
ontime8	9942.3999629617
l2events	78321



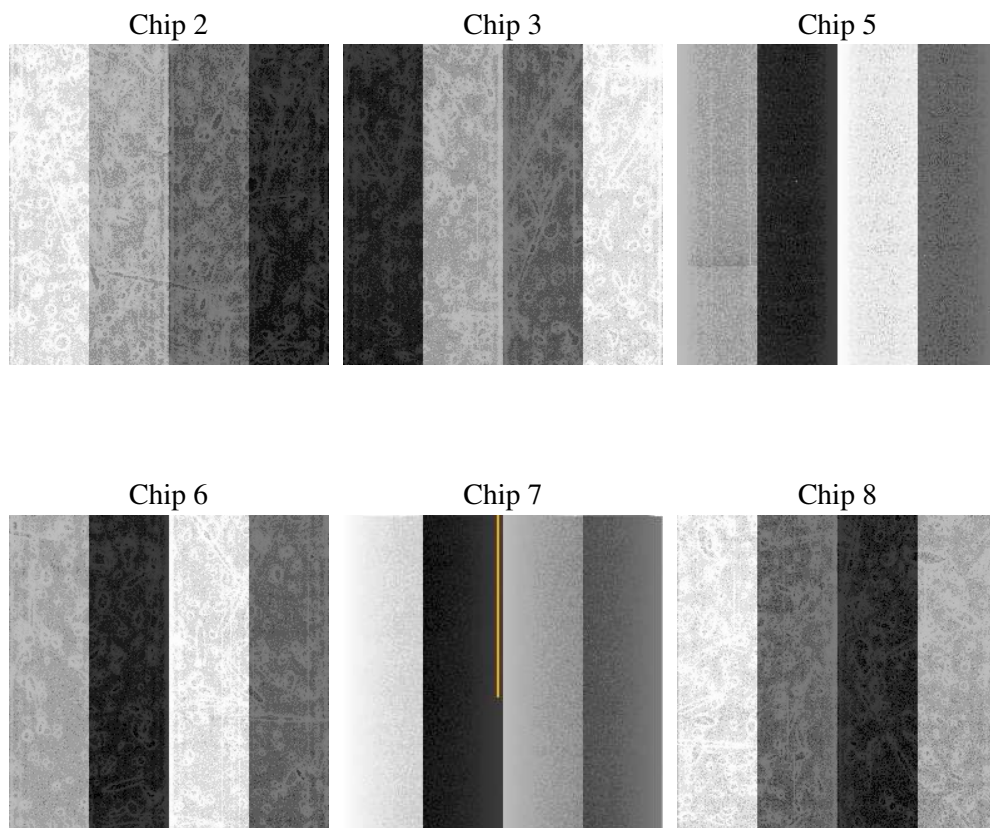
2 OBI

2.1 OBI

2.1.1 Images



2.1.2 Bias



2.1.3 Parameters

obi_num	1
ascdsver	7.6.8
caldbver	3.2.2
date	2006-06-26T22:37:51
revision	2

sched_exp_time	9782.000000
ontime	10367.987539589
ontime2	10367.987539589
ontime3	10364.746559322
ontime5	10367.987539589
ontime6	10367.987539589
ontime7	10367.987539589
ontime8	10367.987539589
l1events	382981

2.1.4 Events

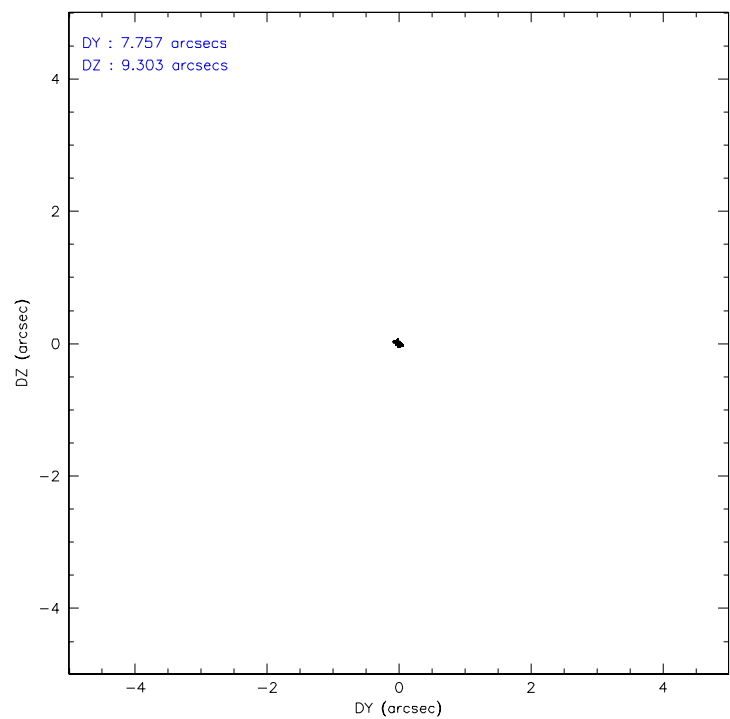
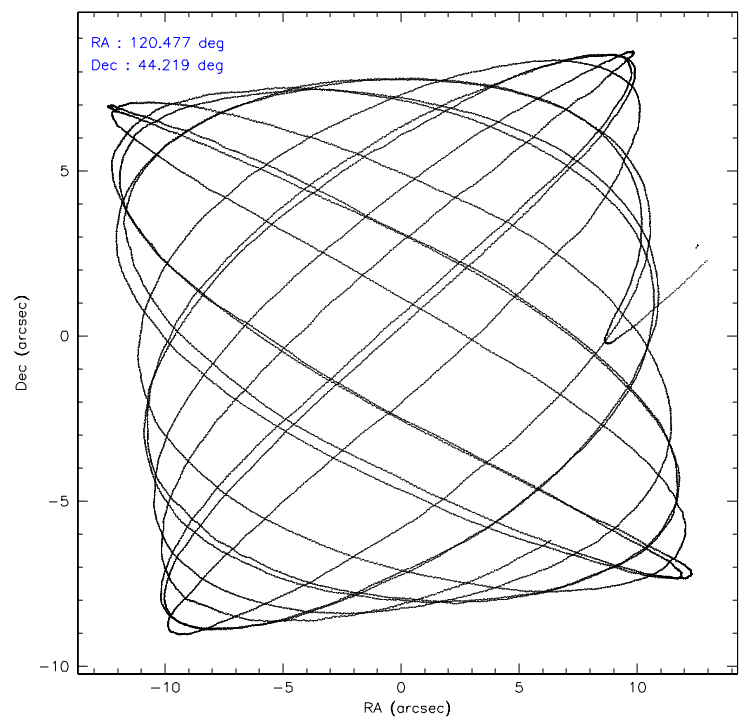
	ccd 2	ccd 3	ccd 5	ccd 6	ccd 7	ccd 8
level 1 events	53926	51475	82873	54594	71818	68295
rejected events	47826	45478	46425	48261	46244	53904
rejected %	88%	88%	56%	88%	64%	78%

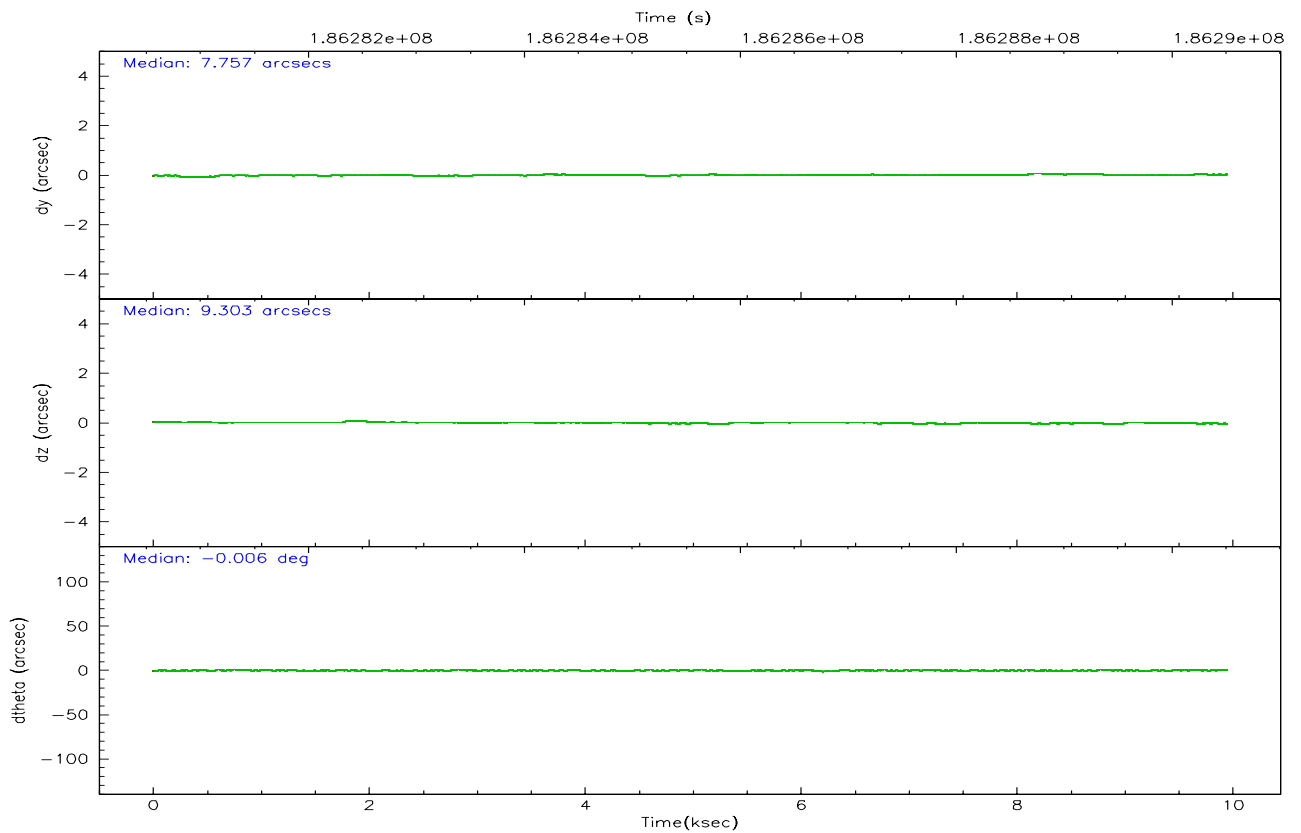
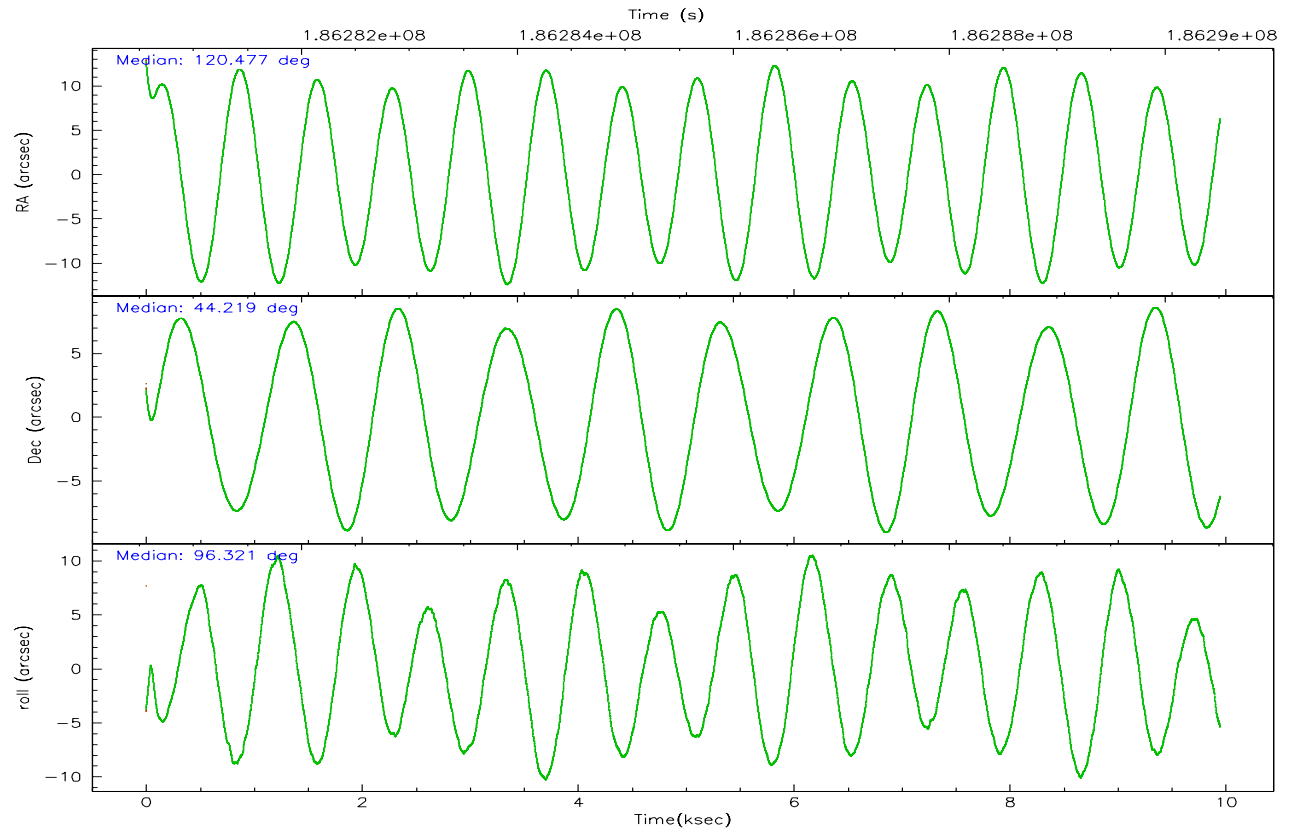
	ccd 2	ccd 3	ccd 5	ccd 6	ccd 7	ccd 8
grade 0 events	2808	2747	6655	2662	1565	5138
	5%	5%	8%	4%	2%	7%
grade 1 events	37	38	180	26	55	46
	0%	0%	0%	0%	0%	0%
grade 2 events	1323	1230	10401	1282	6517	3262
	2%	2%	12%	2%	9%	4%
grade 3 events	577	592	734	608	1308	1512
	1%	1%	0%	1%	1%	2%
grade 4 events	618	586	726	696	1330	1451
	1%	1%	0%	1%	1%	2%
grade 5 events	2242	2343	3705	2474	4798	3211
	4%	4%	4%	4%	6%	4%
grade 6 events	1060	1089	19467	1355	15926	3666
	1%	2%	23%	2%	22%	5%
grade 7 events	45261	42850	41005	45491	40319	50009
	83%	83%	49%	83%	56%	73%

2.2 Compared Parameters

Parameter	Planned	Actual	Parameter	Planned	Actual
Instrument	ACIS	ACIS	Obspar format version number	6	6
Detector	ACIS-235678	ACIS-235678	Obspar file type	PREDICTED	ACTUAL
Grating	NONE	NONE	Obspar update status	NONE	UPDATED
Data mode	FAINT	FAINT	On-chip summing requested	N	N
Observation mode	POINTING	POINTING	Subarray requested	NONE	NONE
Pointing RA	120.499636	120.476710543914	Alternating exposures requested	N	N
Pointing Dec	44.197350	44.2190614739062	Primary exposure time	0.000000	3.2
Pointing Roll	96.152751	96.32536524175609			
SIM focus pos (mm)	-0.684267	-0.6828225247311905			
SIM defocus (mm)	0	0.001444936568705701			
SIM translation stage pos (mm)	-190.132523	-190.1425803651734			
SIM translation stage offset (mm)	0	0.01005778216563158			
Observation start time	186280723.184000	186279453.1417			
Observation start date	2003-11-27T00:37:39	2003-11-27T00:17:33			
Observation end time	186290505.184000	186291014.1172			
Observation end date	2003-11-27T03:20:41	2003-11-27T03:30:14			
Read mode	TIMED	TIMED			

2.3 Aspect



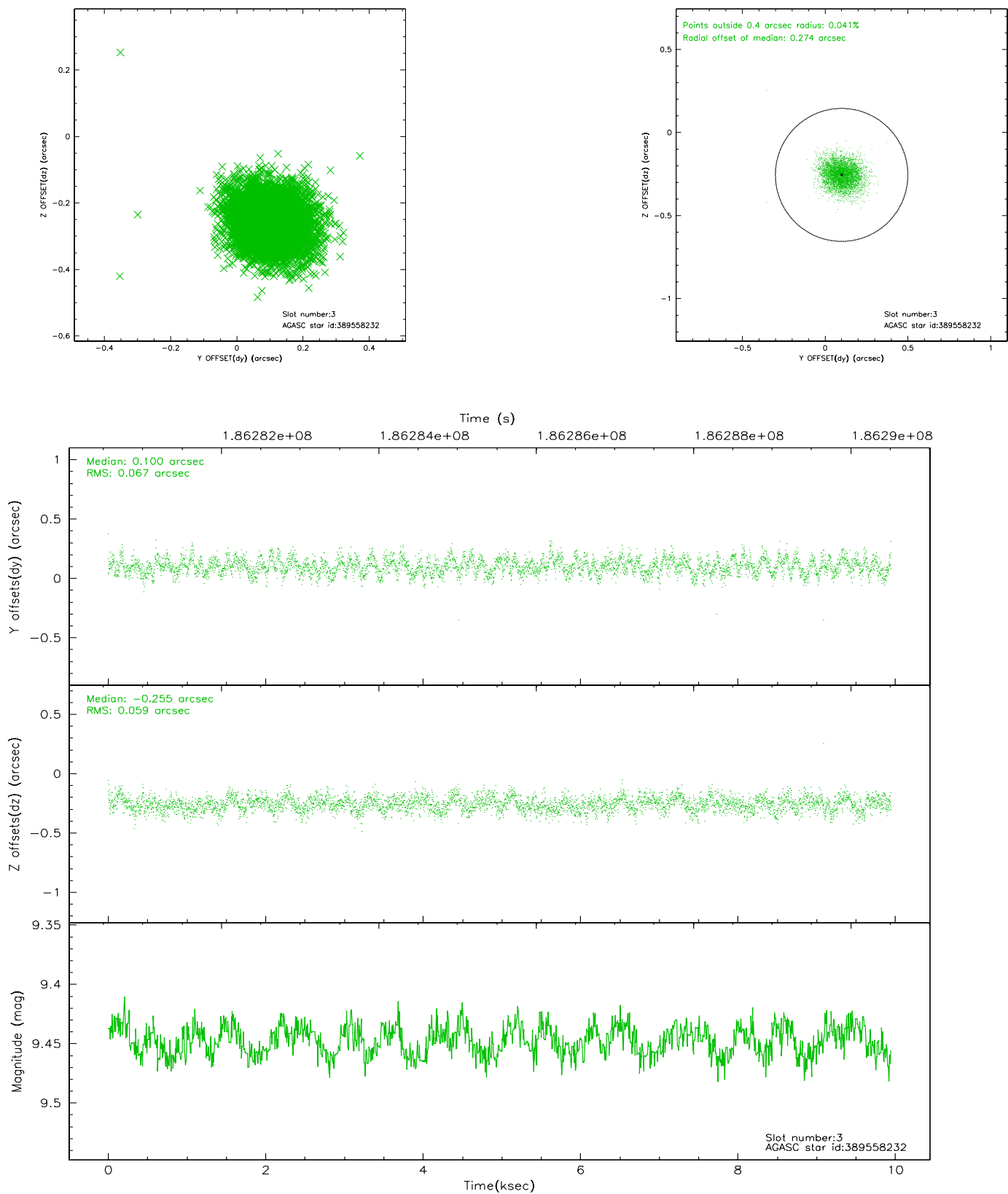


Slot Statistics

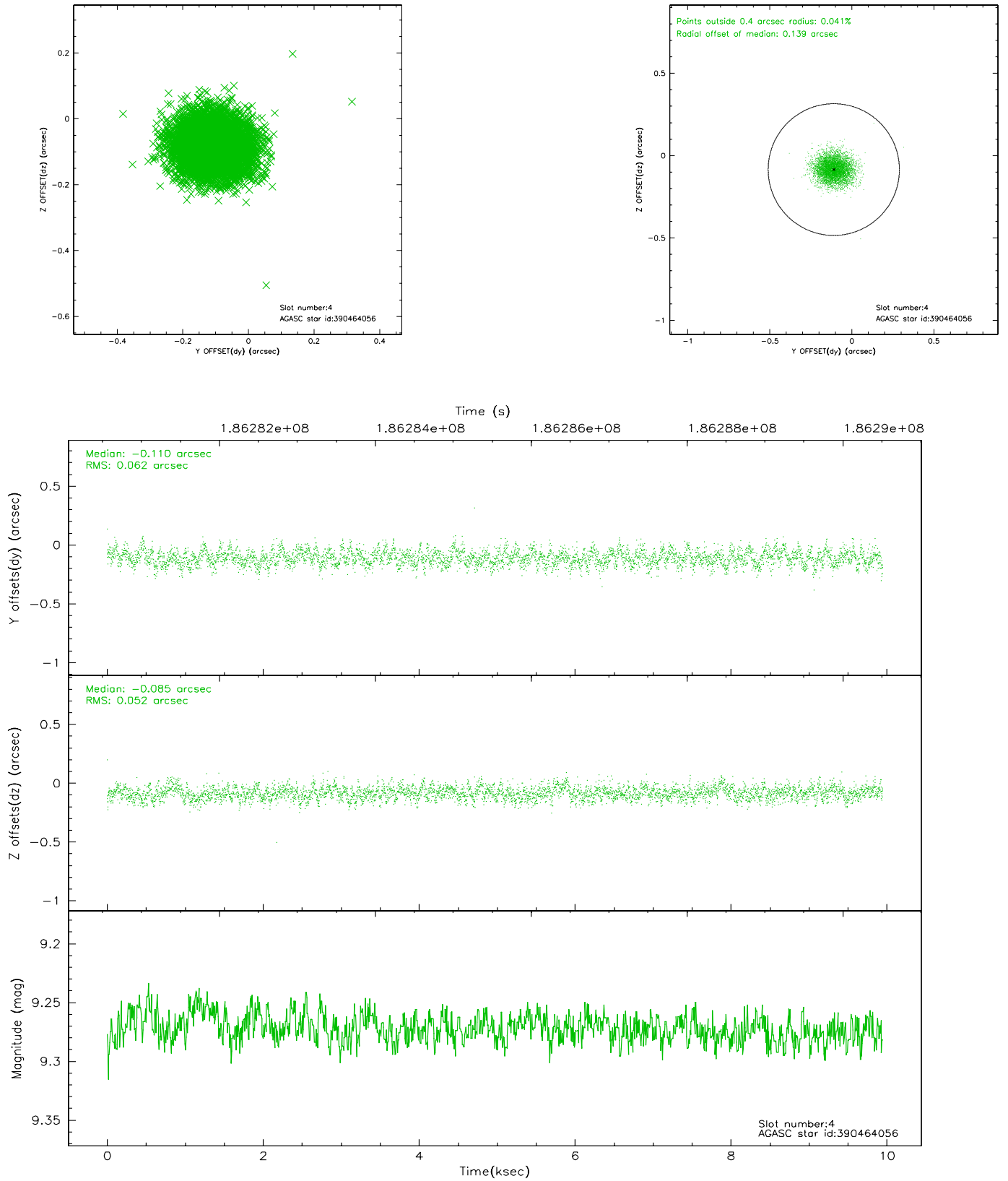
slot	status	id	mag	n_pts	med_dy	med_dz	dr1	dr2	ra	dec	mean_y	mean_z
0	FID	ACIS-S-1	7.19	2427	0.029	0.010	0.006	0.011	0.000000	0.000000	935.54	-1726.09
1	FID	ACIS-S-5	7.24	2427	-0.044	0.036	0.006	0.010	0.000000	0.000000	-1813.23	170.93
2	FID	ACIS-S-6	7.35	2426	-0.006	-0.033	0.007	0.011	0.000000	0.000000	400.48	815.43
3	GUIDE	389558232	9.45	4851	0.100	-0.255	0.096	0.152	119.991669	43.618561	-1925.60	1539.04
4	GUIDE	390464056	9.27	4852	-0.110	-0.085	0.087	0.138	120.304126	44.805145	2229.20	262.69
5	GUIDE	390466408	8.27	4854	-0.146	0.120	0.058	0.094	121.102205	44.605508	1301.67	-1693.14
6	GUIDE	390472904	8.20	4854	0.090	0.177	0.070	0.107	120.566717	44.022111	-645.23	-105.05
7	GUIDE	390475128	7.73	4853	0.066	0.040	0.075	0.115	120.989320	43.839429	-1413.44	-1126.40

2.4 Star Slots

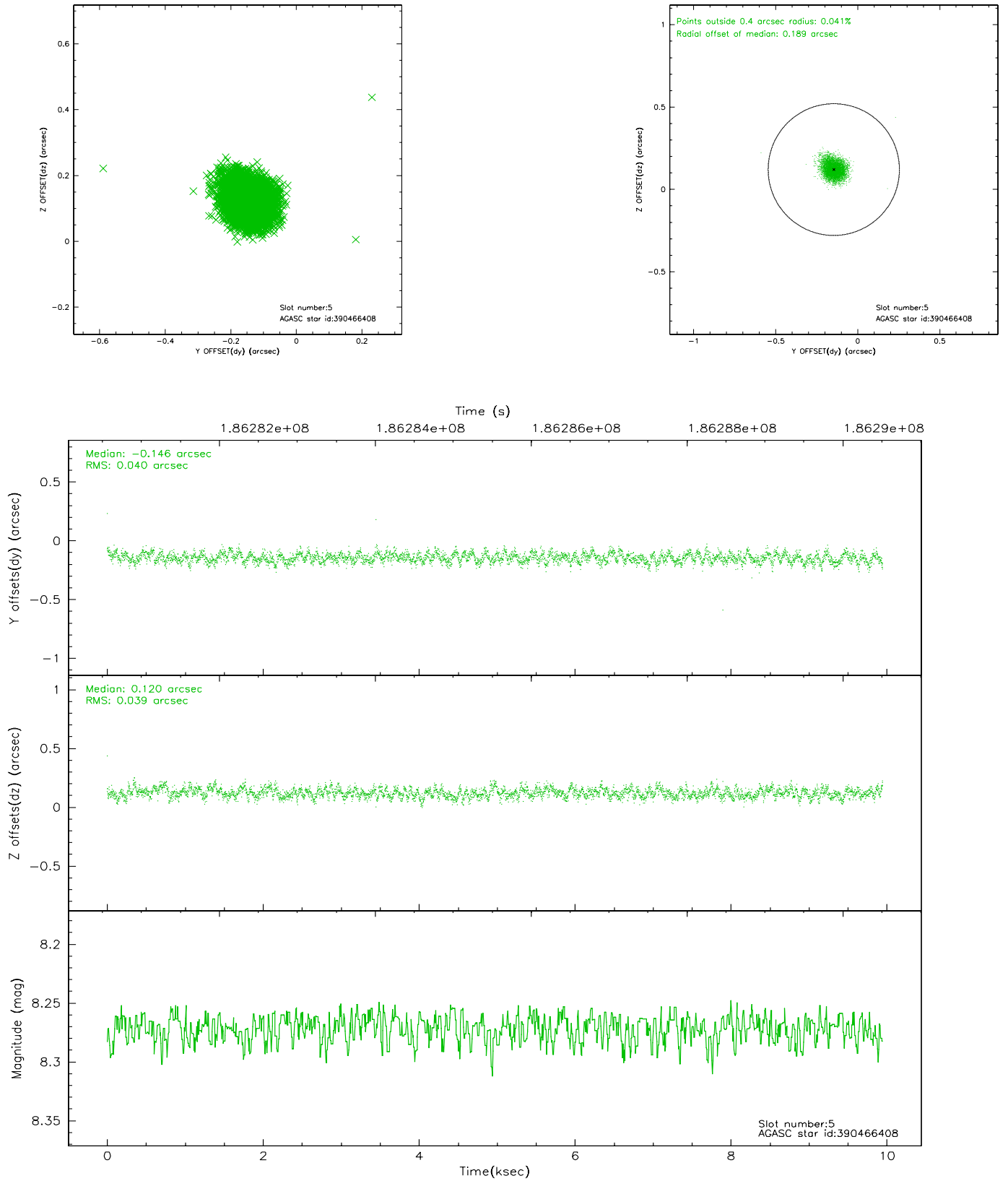
2.4.1 Slot 3



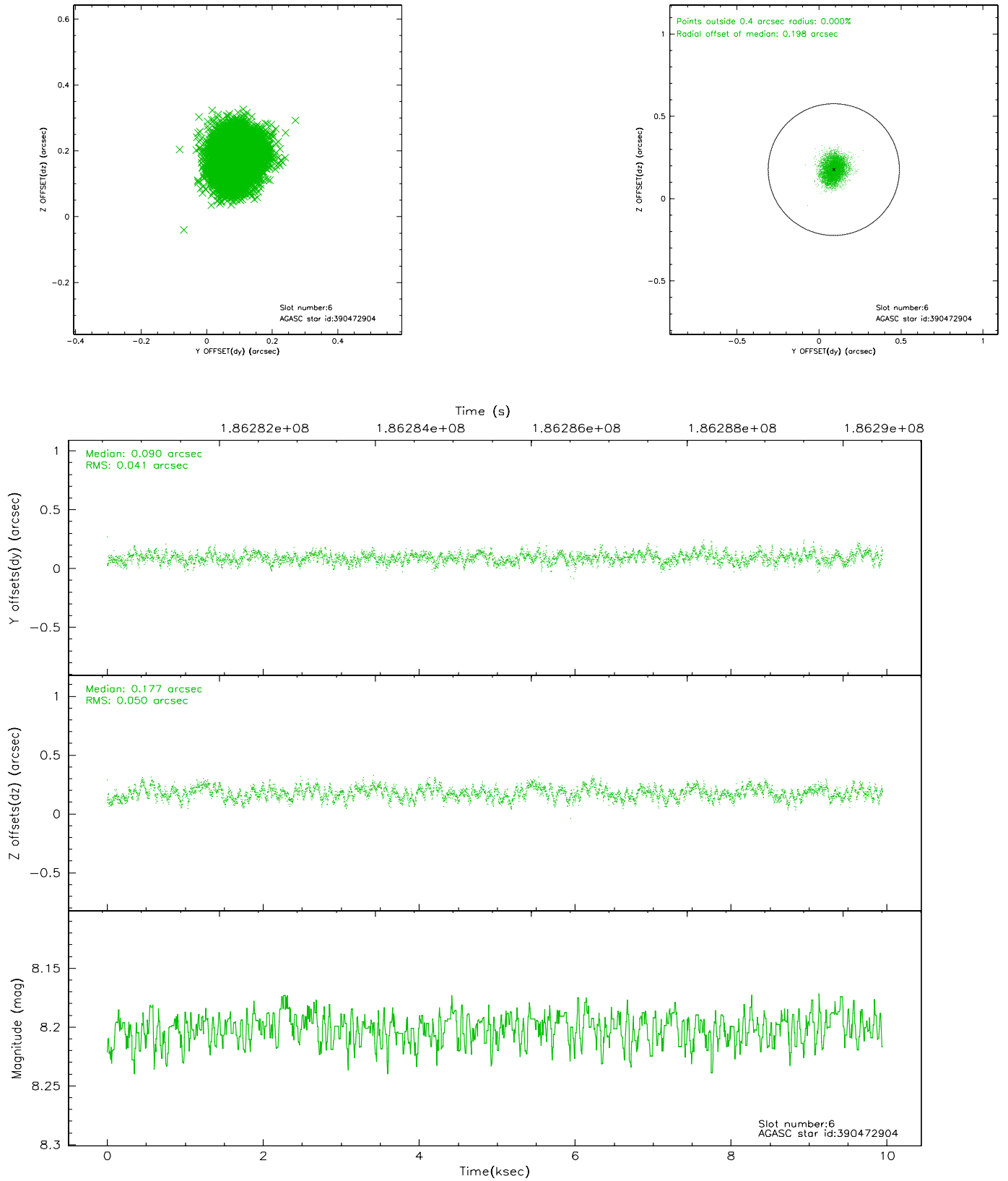
2.4.2 Slot 4



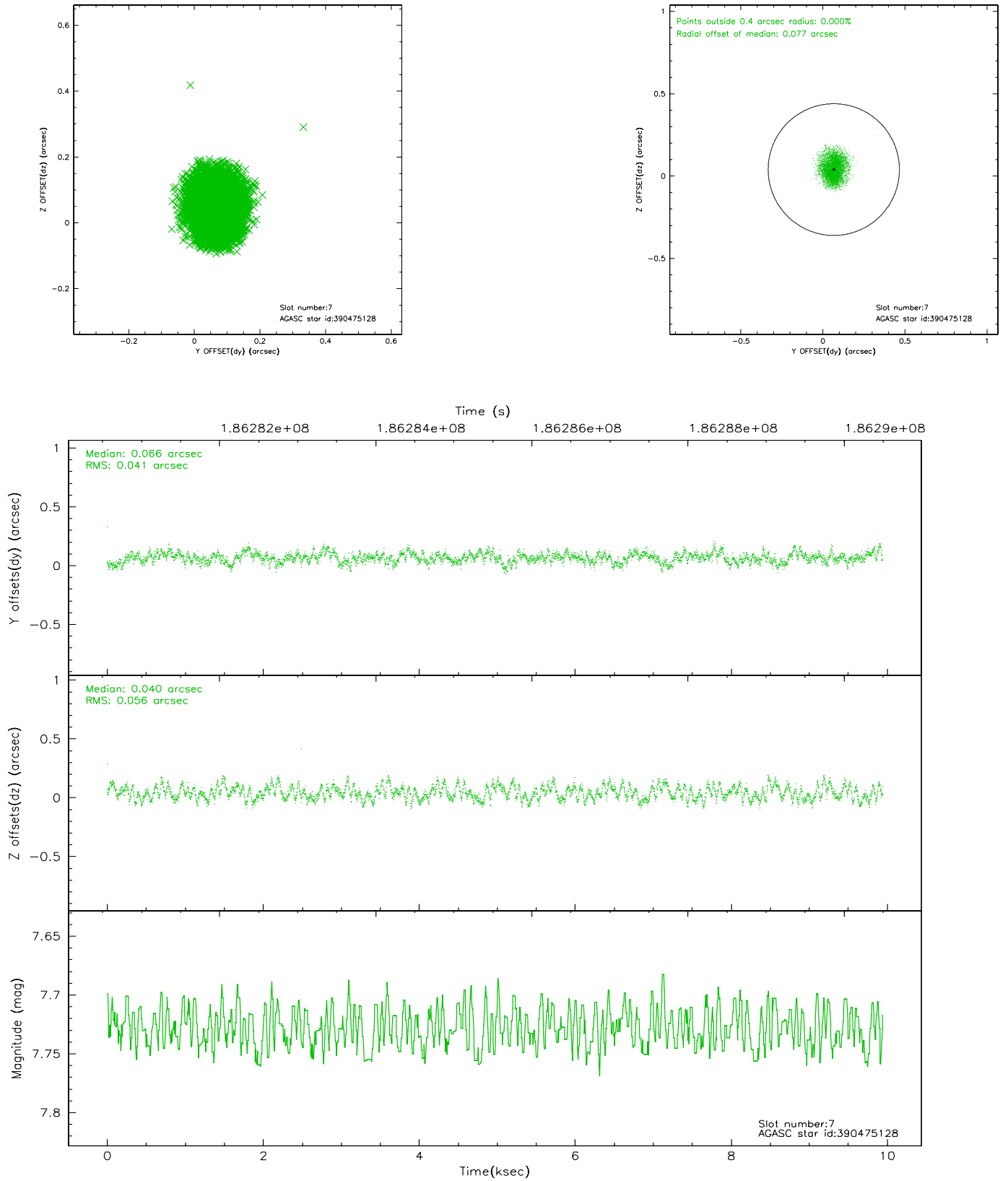
2.4.3 Slot 5



2.4.4 Slot 6

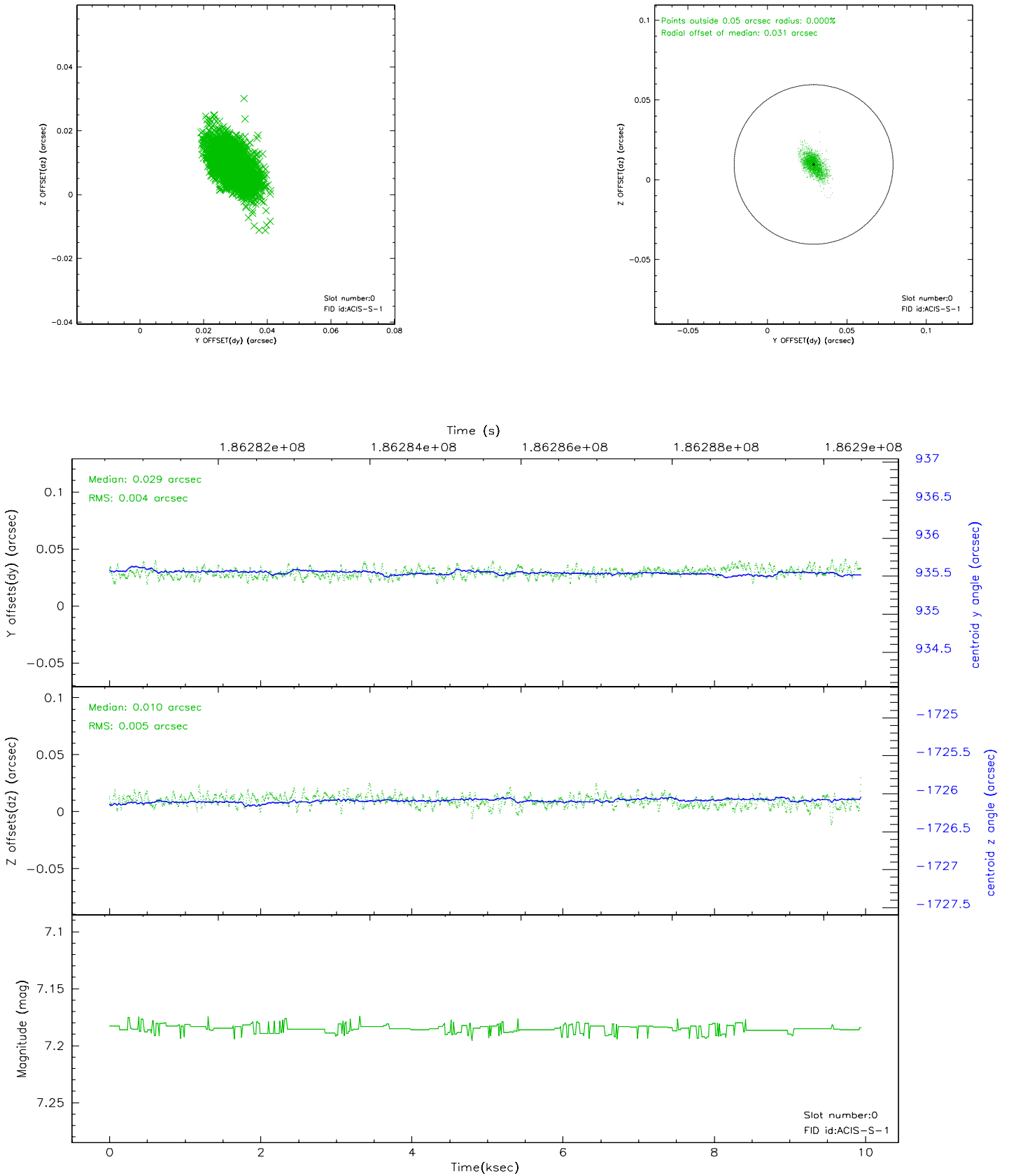


2.4.5 Slot 7

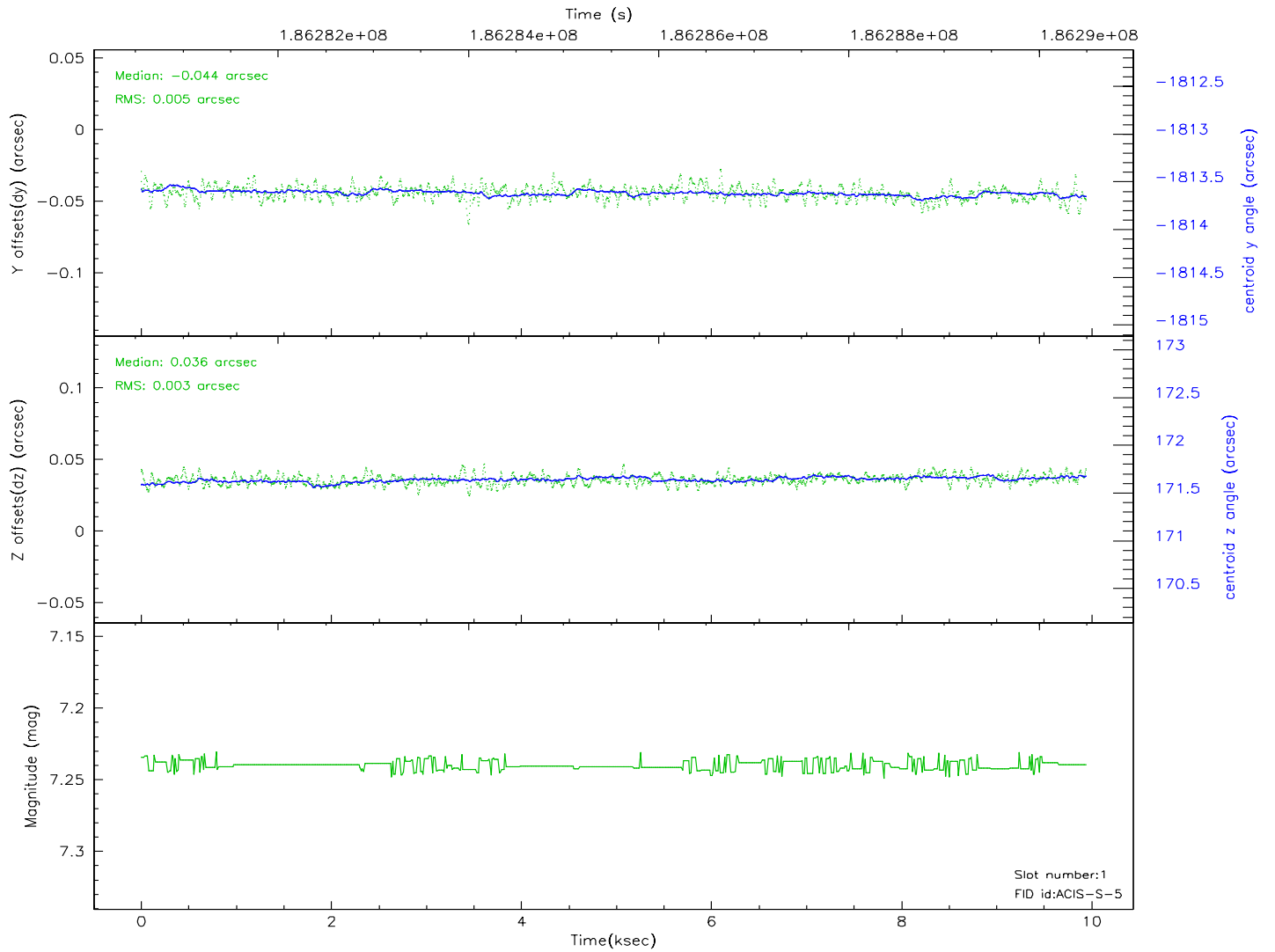
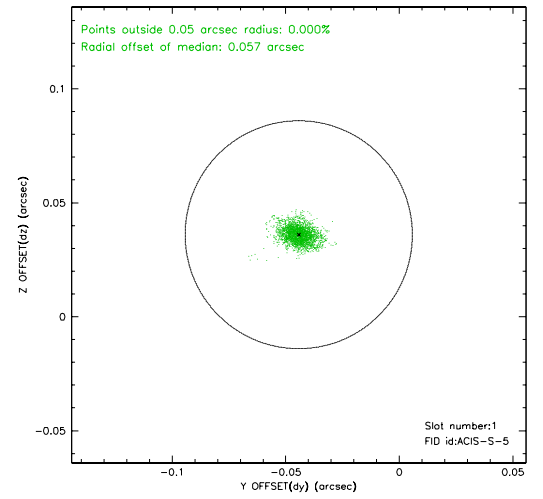
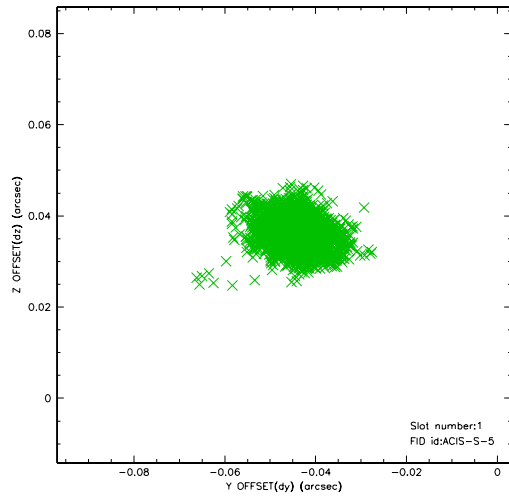


2.5 FID Slots

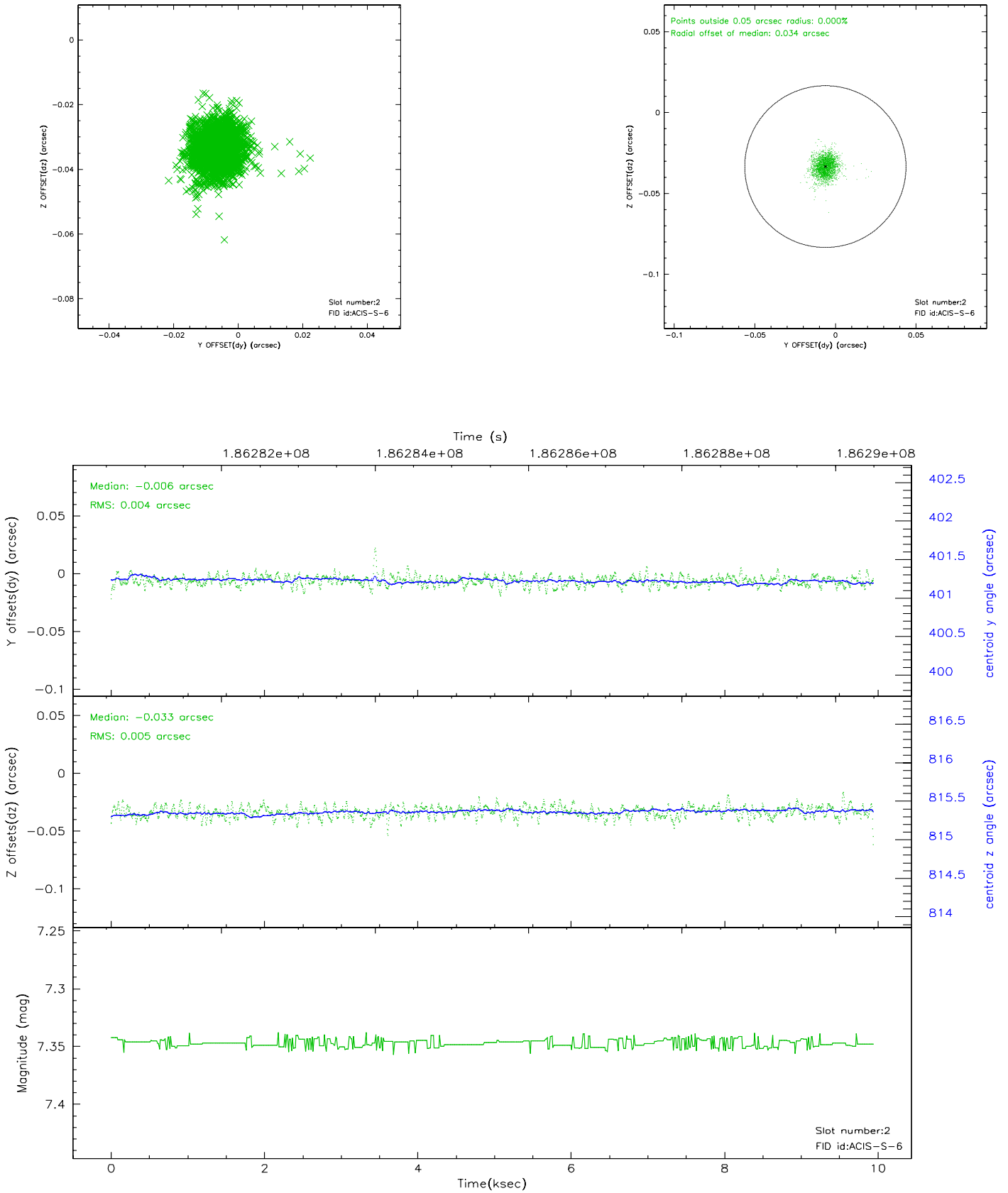
2.5.1 Slot 0



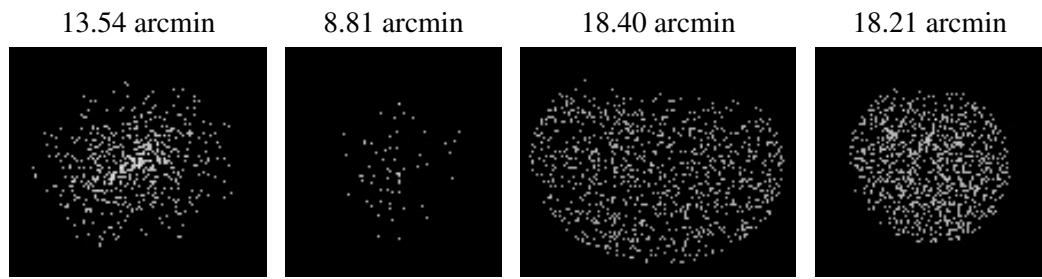
2.5.2 Slot 1



2.5.3 Slot 2



3 Point Sources



A Summary

A.1 Status

V&V Scientist	Jen Lauer
V&V Date (YYYY-MM-DD)	2006.06.27
V&V Edition	1
V&V Disposition and Status	OK
V&V Charge Time	9.942

A.2 Comments