

V&V Reference Report

L2 ASCDS Version : 7.6.8

Observation 4678 - L2 Version _e1
Chandra X-Ray Center

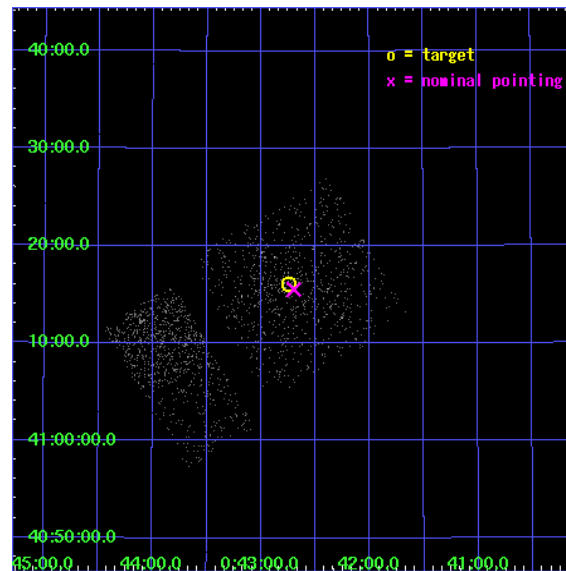
L2 Processing Date : Jun 30 2006

Contents

1	Front	2
2	OBI Primary	3
2.1	OBI	3
2.1.1	Images	3
2.1.2	Bias	3
2.1.3	Parameters	4
2.1.4	Events	4
2.2	Compared Parameters	5
2.3	Aspect	6
2.4	Star Slots	9
2.4.1	Slot 3	9
2.4.2	Slot 4	10
2.4.3	Slot 5	11
2.4.4	Slot 6	12
2.4.5	Slot 7	13
2.5	FID Slots	14
2.5.1	Slot 0	14
2.5.2	Slot 1	15
2.5.3	Slot 2	16
3	OBI Secondary	17
3.1	OBI	17
3.1.1	Images	17
3.1.2	Bias	17
3.1.3	Parameters	18
3.1.4	Events	18
4	Point Sources	19
A	Summary	20
A.1	Status	20
A.2	Comments	20

1 Front

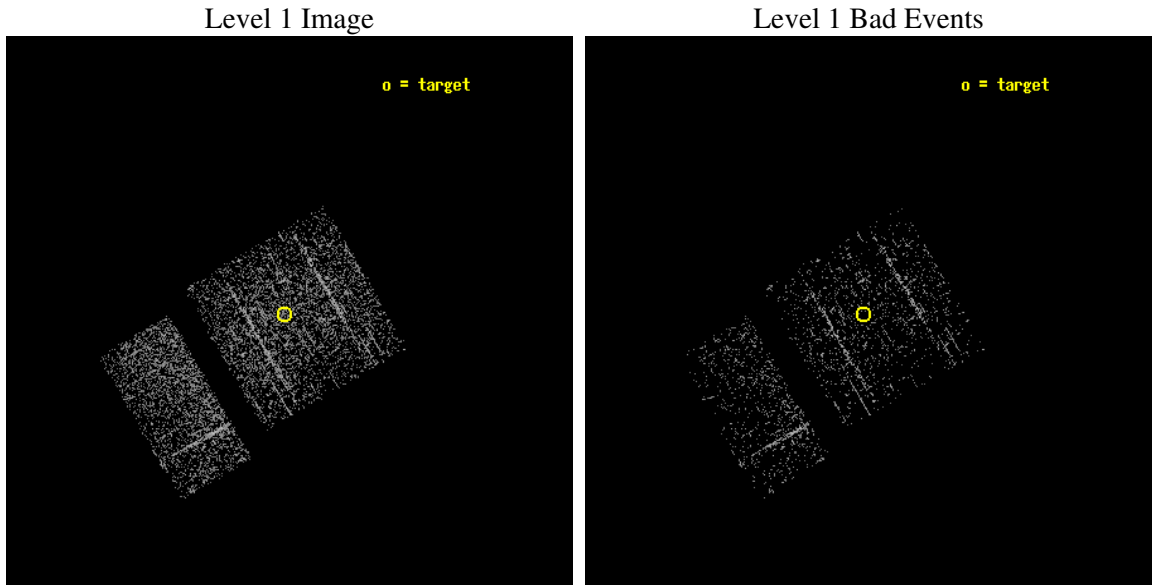
seq_num	600333
obs_id	4678
title	Searching for Black Hole X-ray Nova in M31
observer	Dr. Stephen Murray
object	M31-Center
dtcycle	0
cycle	P
ra_targ	10.685
dec_targ	41.268972
ra_nom	10.674372774759
dec_nom	41.259044533089
roll_nom	239.53232395412
revision	2
ontime	922.32224494219
livetime	145.19576921763
ontime0	922.19912496209
ontime1	922.24016493559
ontime2	922.28120493889
ontime3	922.32224494219
ontime6	922.34912037849
ontime7	922.34912037849
l2events	1968



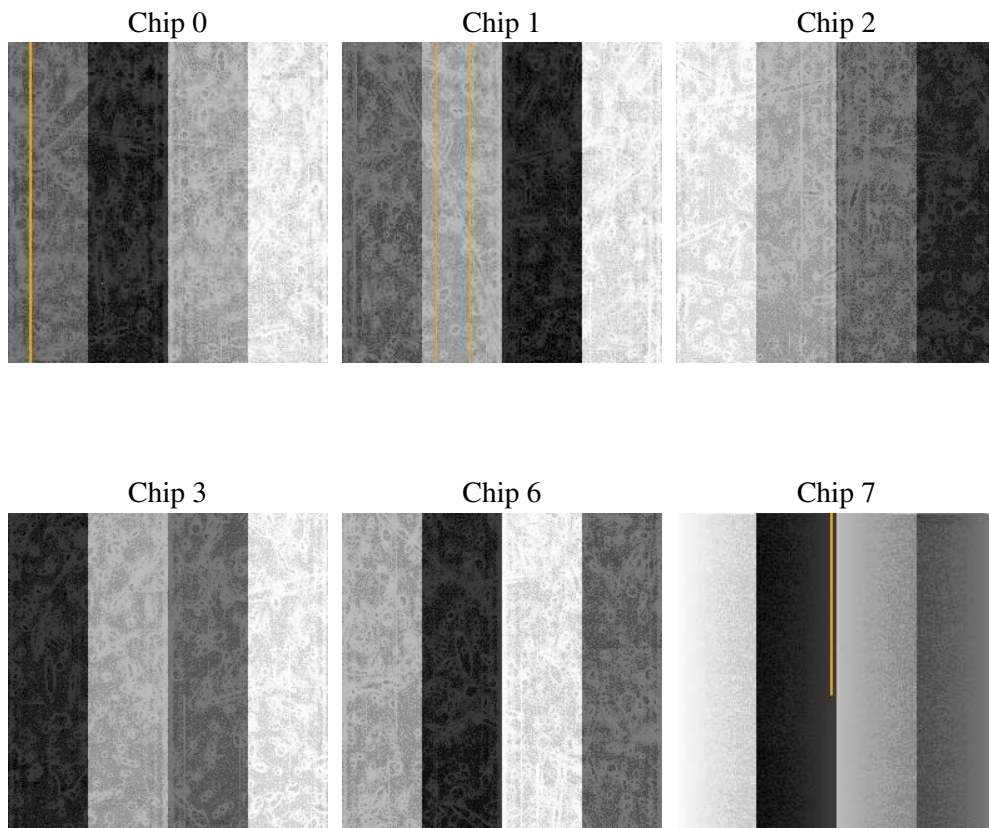
2 OBI Primary

2.1 OBI

2.1.1 Images



2.1.2 Bias



2.1.3 Parameters

obi_num	1
ascdsver	7.6.8
caldbver	3.2.2
date	2006-06-30T09:37:49
revision	2

sched_exp_time	4850.000000
ontime	929.97184038162
ontime0	929.97184038162
ontime1	929.97184038162
ontime2	929.97184038162
ontime3	929.97184038162
ontime6	929.97184038162
ontime7	929.97184038162
l1events	14582

2.1.4 Events

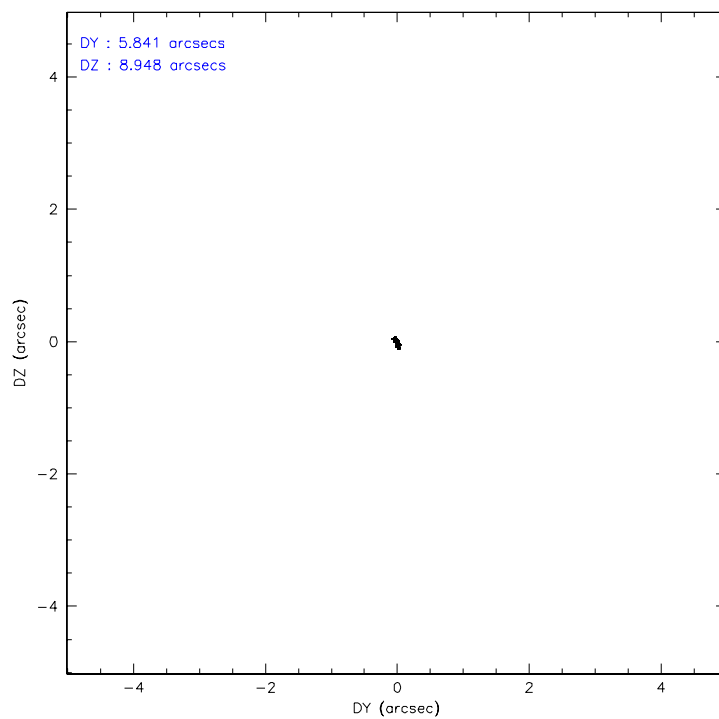
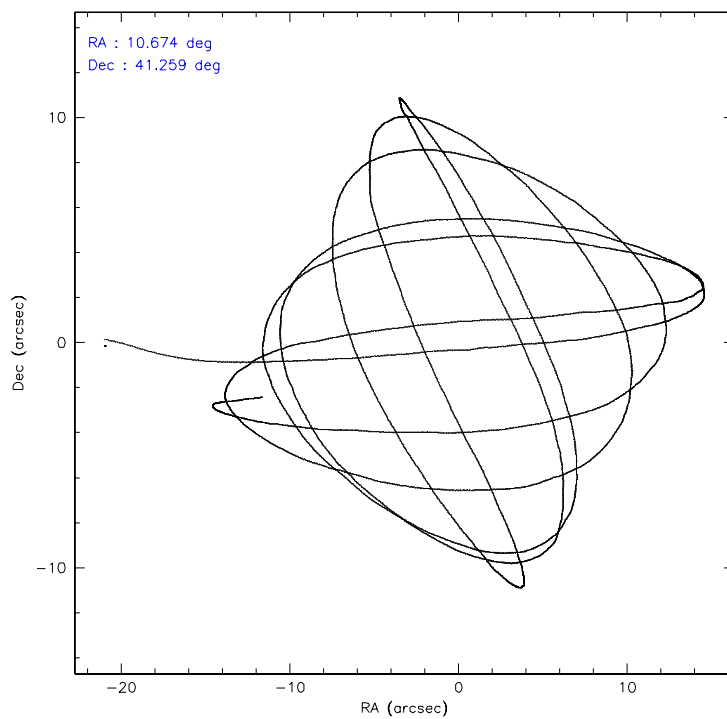
	ccd 0	ccd 1	ccd 2	ccd 3	ccd 6	ccd 7
level 1 events	2199	2394	2338	2492	2560	2599
rejected events	1911	2063	2073	2083	2325	1880
rejected %	86%	86%	88%	83%	90%	72%

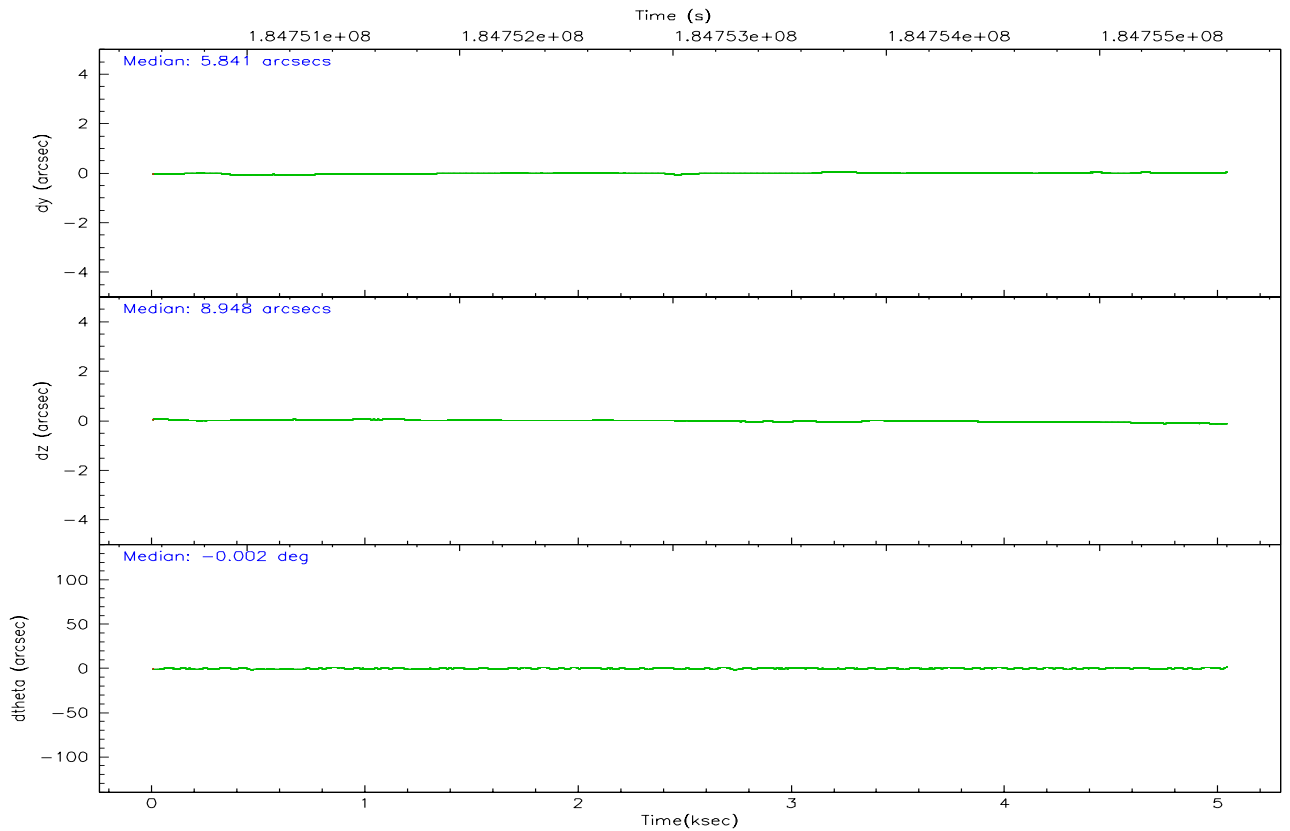
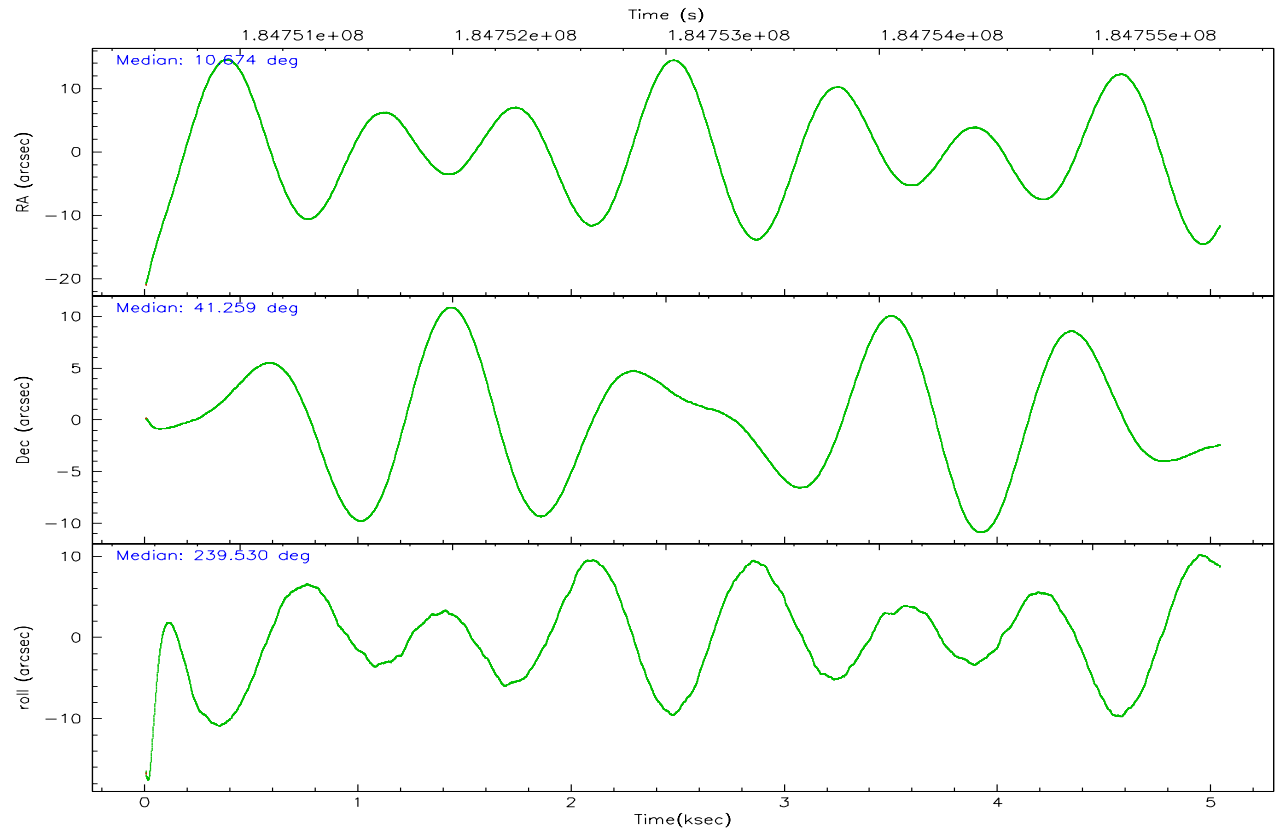
	ccd 0	ccd 1	ccd 2	ccd 3	ccd 6	ccd 7
grade 0 events	153	144	107	233	76	66
	6%	6%	4%	9%	2%	2%
grade 1 events	3	5	1	2	1	1
	0%	0%	0%	0%	0%	0%
grade 2 events	48	64	61	73	55	196
	2%	2%	2%	2%	2%	7%
grade 3 events	29	43	30	24	25	44
	1%	1%	1%	0%	0%	1%
grade 4 events	22	37	21	29	26	56
	1%	1%	0%	1%	1%	2%
grade 5 events	84	72	77	95	93	143
	3%	3%	3%	3%	3%	5%
grade 6 events	37	43	50	52	55	365
	1%	1%	2%	2%	2%	14%
grade 7 events	1823	1986	1991	1984	2229	1728
	82%	82%	85%	79%	87%	66%

2.2 Compared Parameters

Parameter	Planned	Actual	Parameter	Planned	Actual
Instrument	ACIS	ACIS	Obspar format version number	6	6
Detector	ACIS-012367	ACIS-012367	Obspar file type	PREDICTED	ACTUAL
Grating	NONE	NONE	Obspar update status	NONE	UPDATED
Data mode	FAINT	FAINT	On-chip summing requested	N	N
Observation mode	POINTING	POINTING	Subarray requested	NONE	NONE
Pointing RA	10.674544	10.67437277475856	Alternating exposures requested	Y	Y
Pointing Dec	41.286433	41.25904453308891	Primary exposure time	0.600000	0.6
Pointing Roll	239.323587	239.5323239541233	Secondary exposure time	3.200000	3.2
Window start time	184204864.184000	184204864.184000	Duty cycle	5	5
Window stop time	184809664.184000	184809664.184000			
SIM focus pos (mm)	-0.782348	-0.7809083437167272			
SIM defocus (mm)	0	0.001439871863259334			
SIM translation stage pos (mm)	-233.592463	-233.5874344608287			
SIM translation stage offset (mm)	0	-0.005018542100998502			
Observation start time	184750755.184000	184749726.16289			
Observation start date	2003-11-09T07:38:11	2003-11-09T07:22:06			
Observation end time	184755605.184000	184756610.06319			
Observation end date	2003-11-09T08:59:01	2003-11-09T09:16:50			
Read mode	TIMED	TIMED			

2.3 Aspect



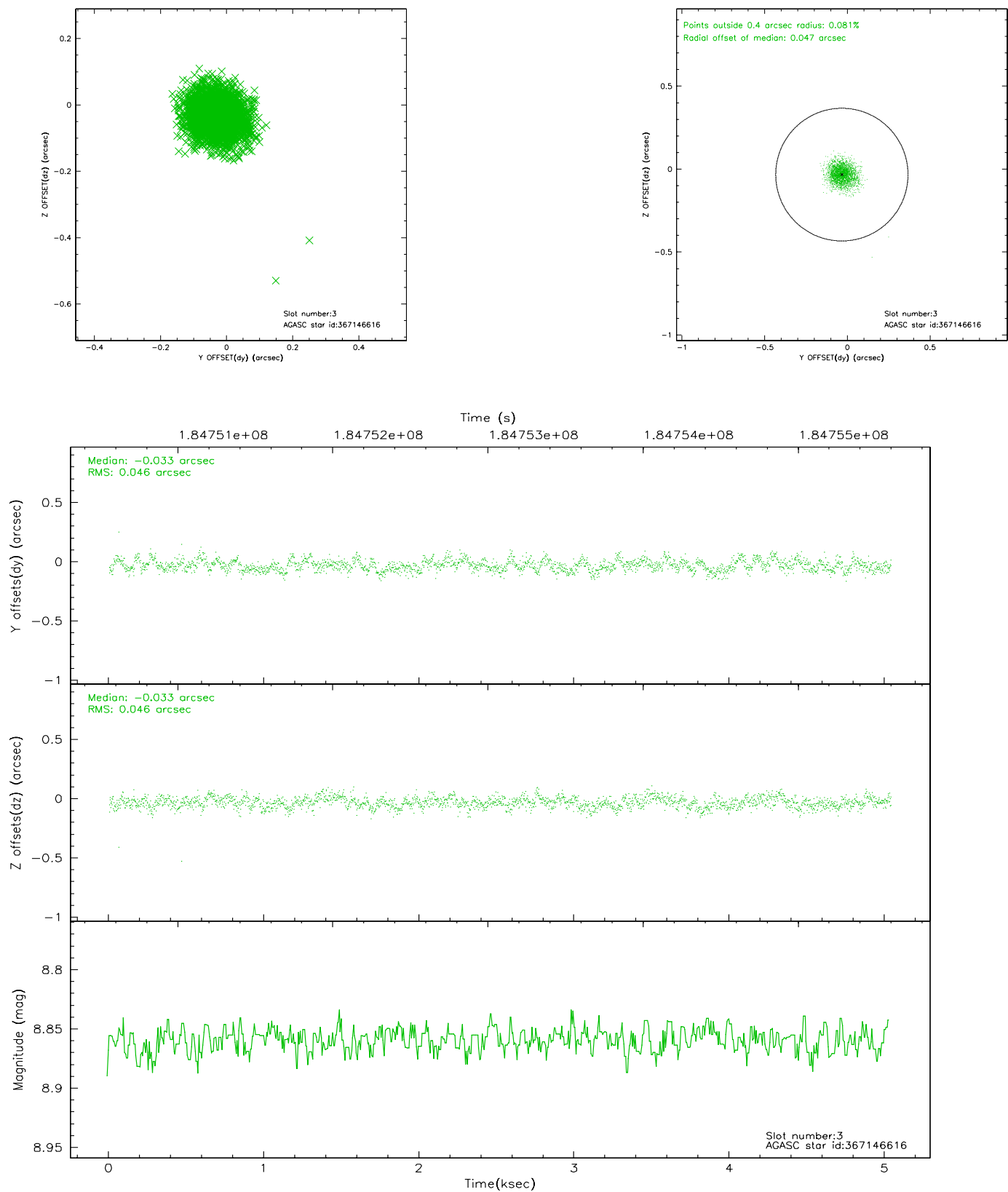


Slot Statistics

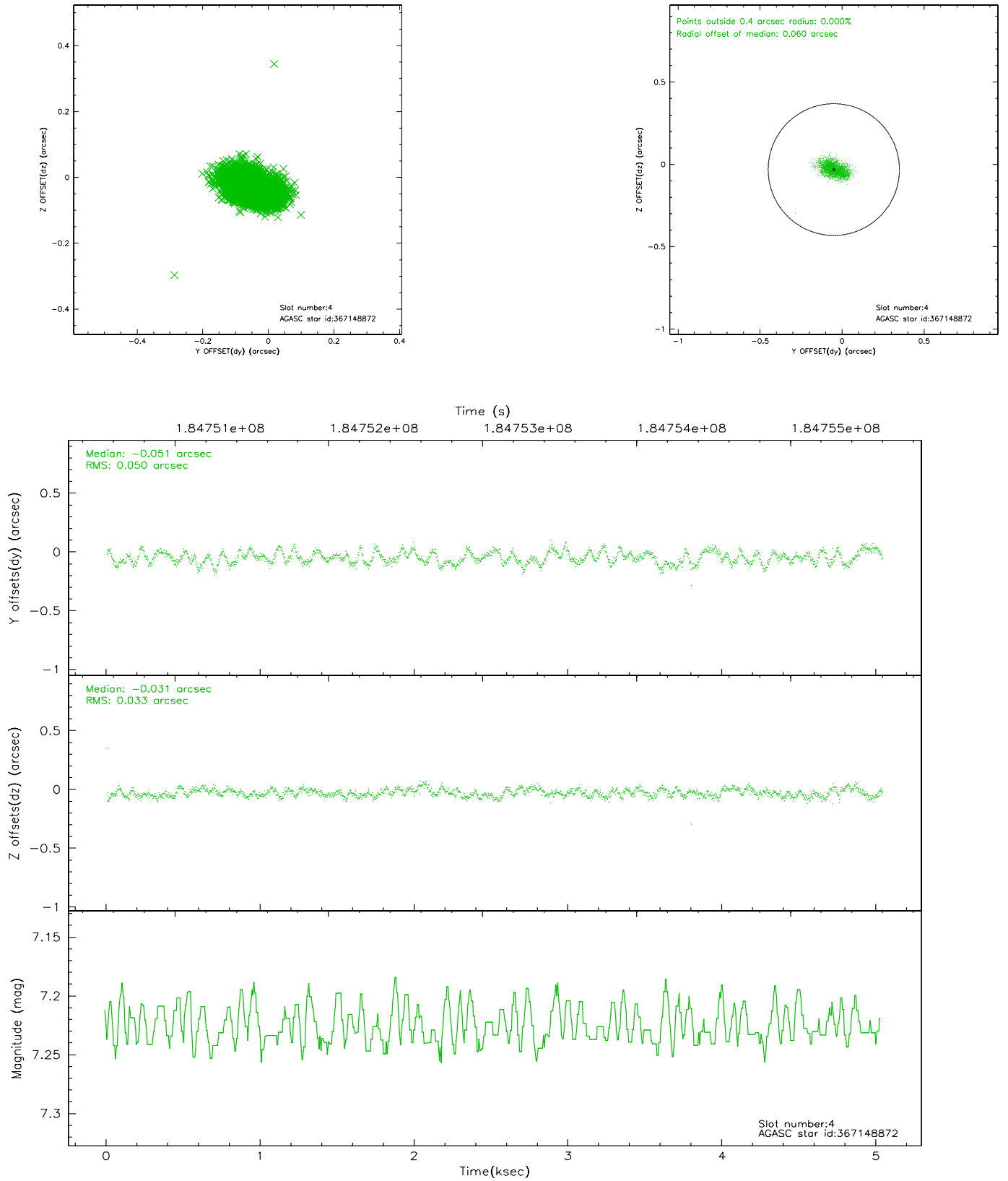
slot	status	id	mag	n_pts	med_dy	med_dz	dr1	dr2	ra	dec	mean_y	mean_z
0	FID	ACIS-I-1	7.24	1229	-0.017	0.073	0.006	0.011	0.000000	0.000000	933.87	-832.31
1	FID	ACIS-I-5	7.23	1229	-0.109	0.029	0.006	0.010	0.000000	0.000000	-1813.67	1064.53
2	FID	ACIS-I-6	7.26	1229	0.035	-0.032	0.007	0.011	0.000000	0.000000	398.14	1710.34
3	GUIDE	367146616	8.86	2458	-0.033	-0.033	0.067	0.111	11.418645	41.190163	-737.90	1906.25
4	GUIDE	367148872	7.23	2458	-0.051	-0.031	0.063	0.100	10.505940	40.688258	2086.41	703.67
5	GUIDE	367663272	9.28	2458	-0.032	0.033	0.085	0.139	10.656279	41.699429	-1252.53	-800.54
6	GUIDE	367674552	8.84	2458	-0.014	-0.068	0.067	0.104	11.016238	41.570845	-1352.19	267.98
7	GUIDE	367139648	8.19	2457	0.126	0.099	0.057	0.090	11.021290	40.433909	2152.83	2382.73

2.4 Star Slots

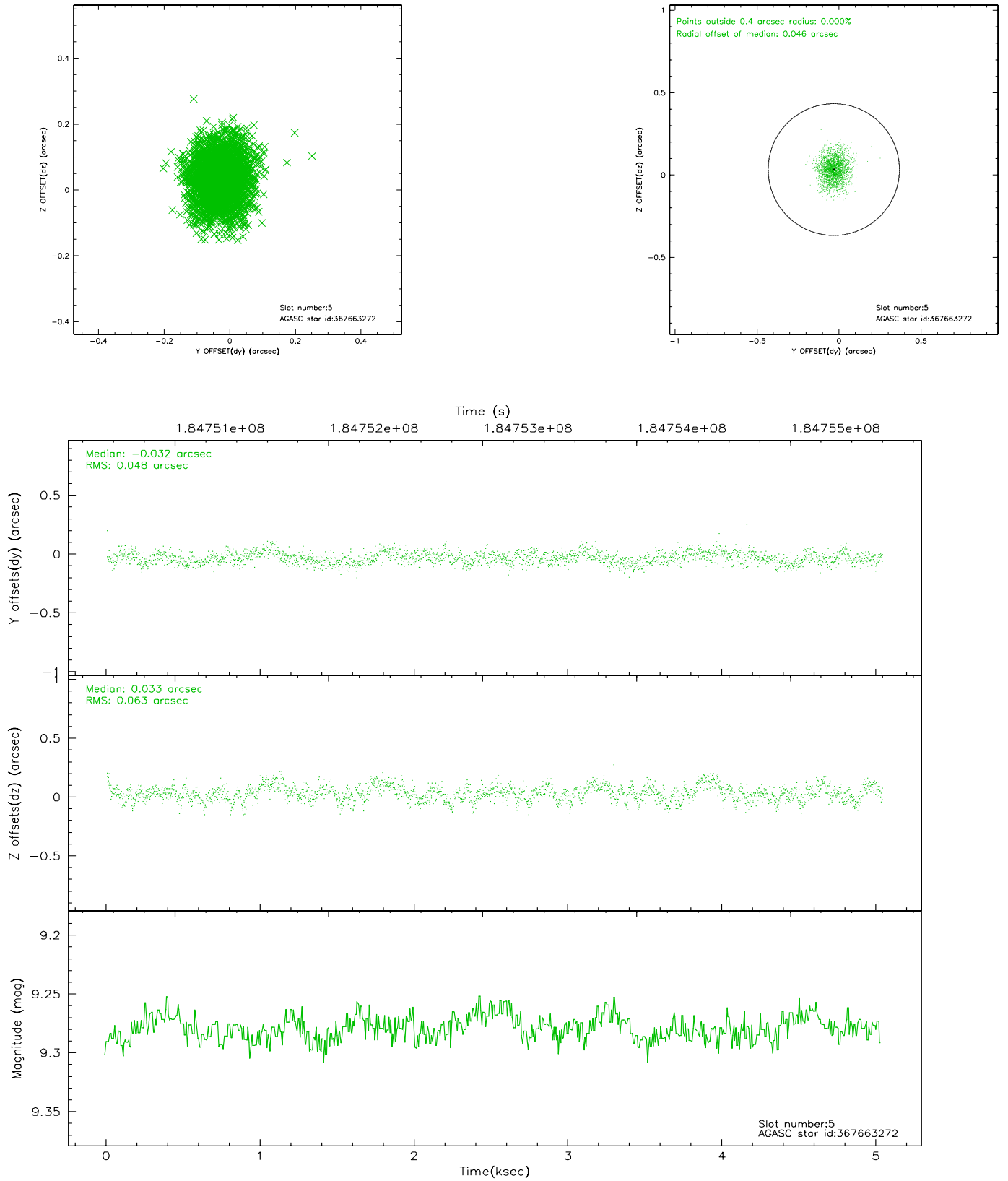
2.4.1 Slot 3



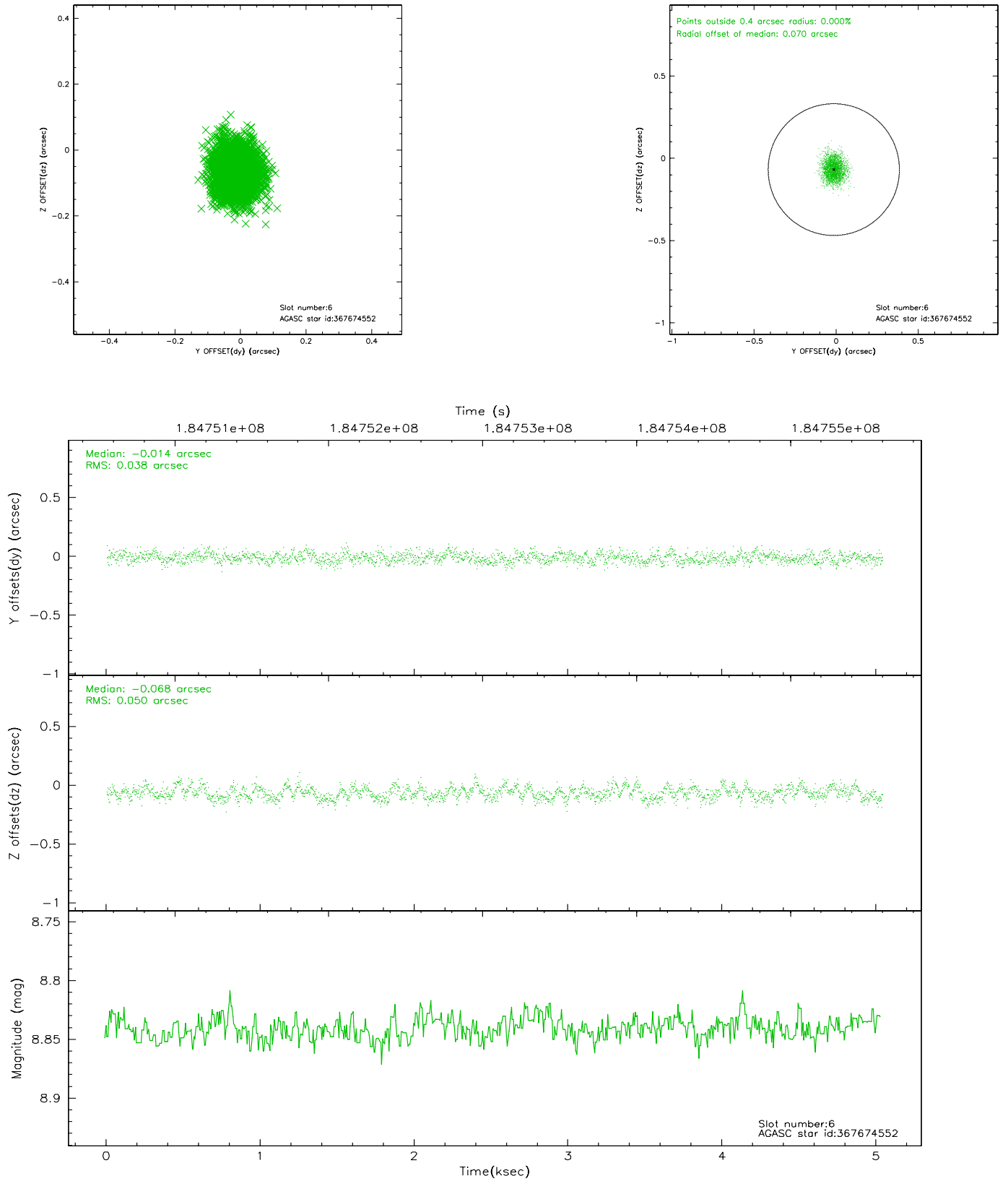
2.4.2 Slot 4



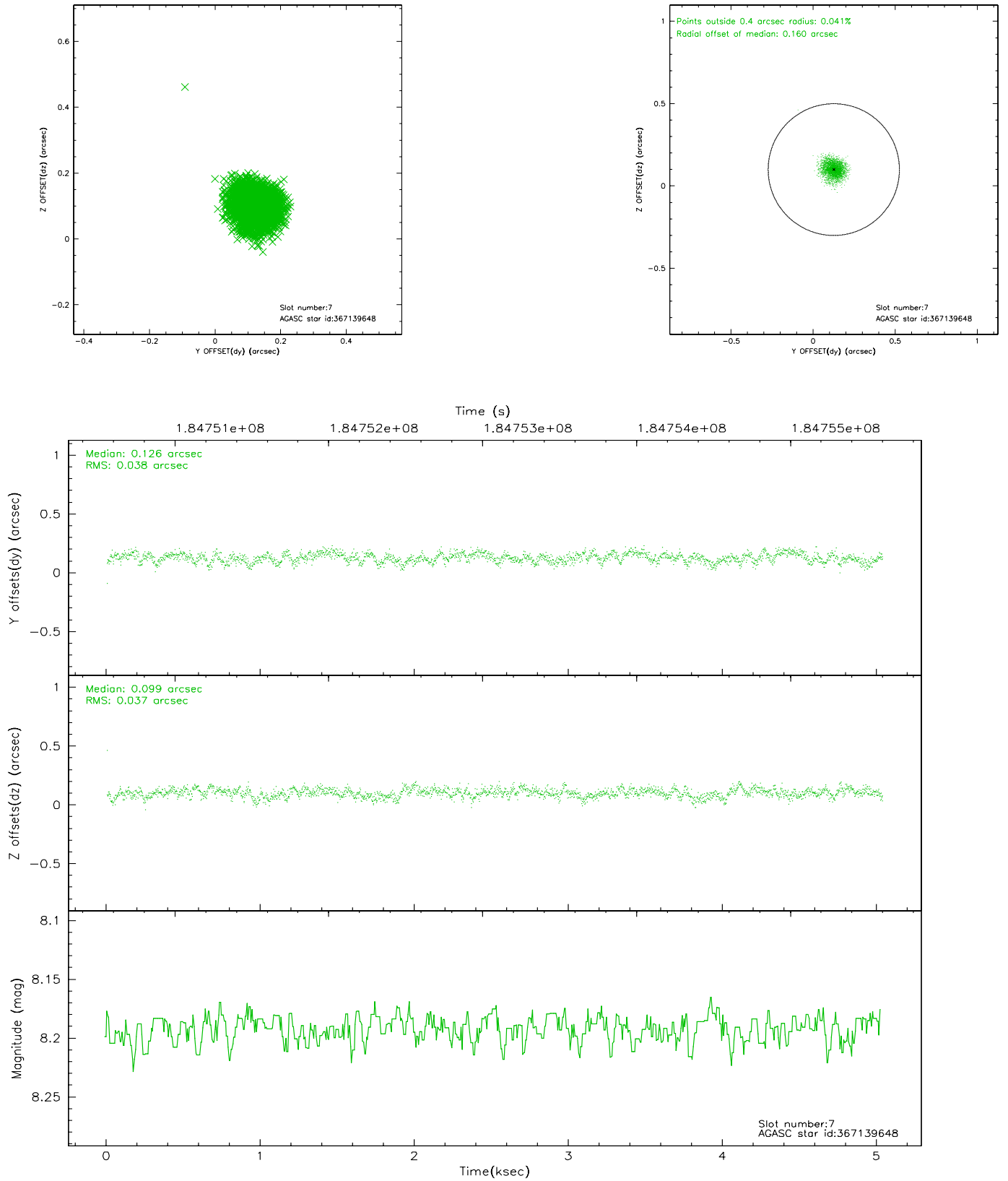
2.4.3 Slot 5



2.4.4 Slot 6

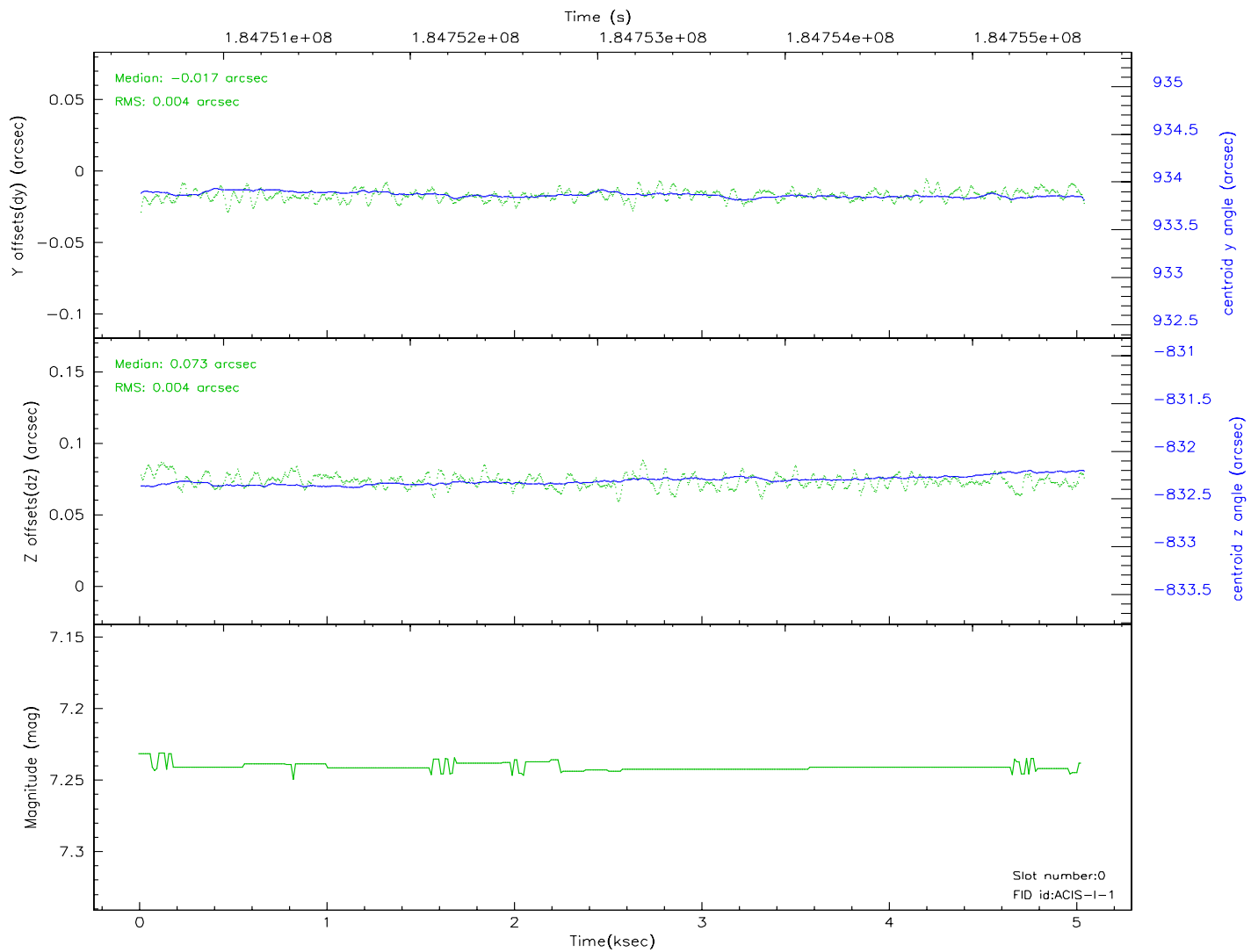
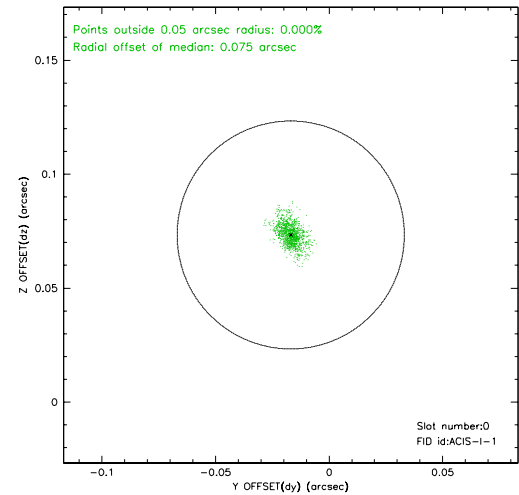
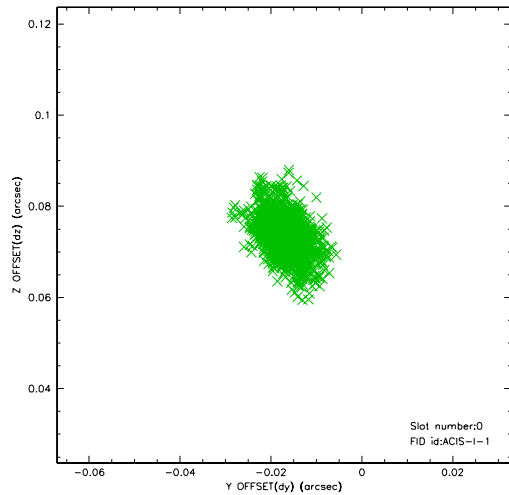


2.4.5 Slot 7

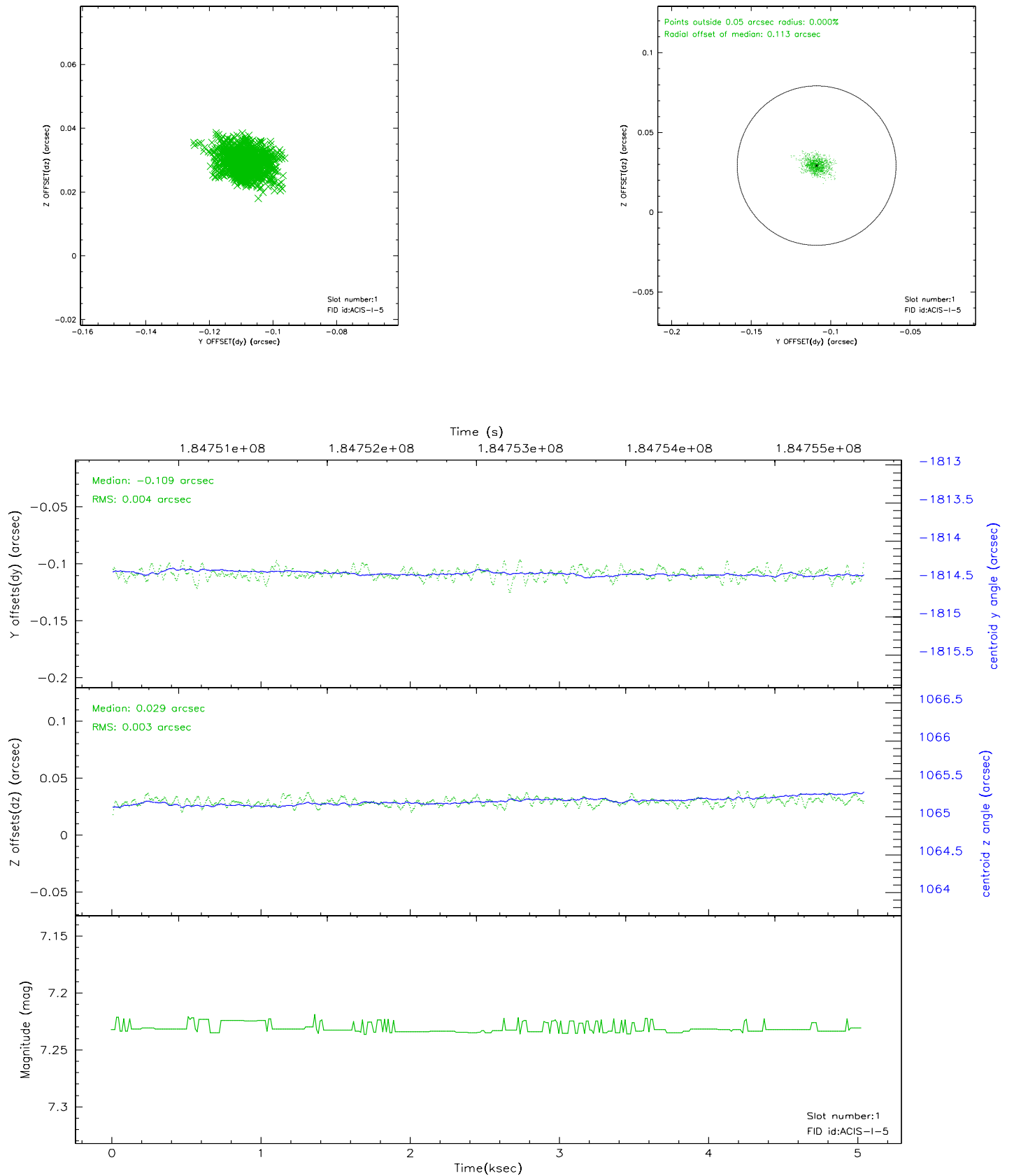


2.5 FID Slots

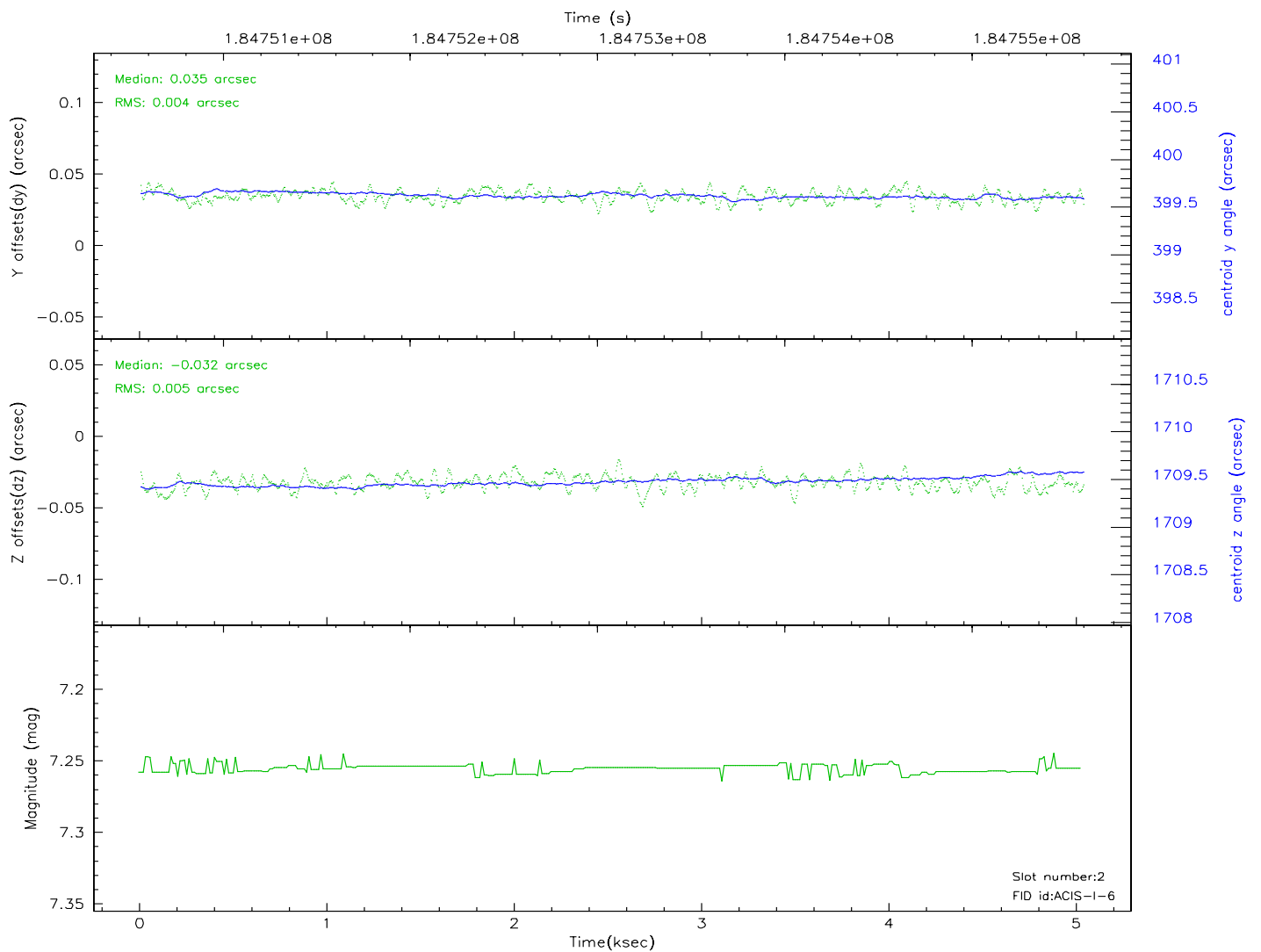
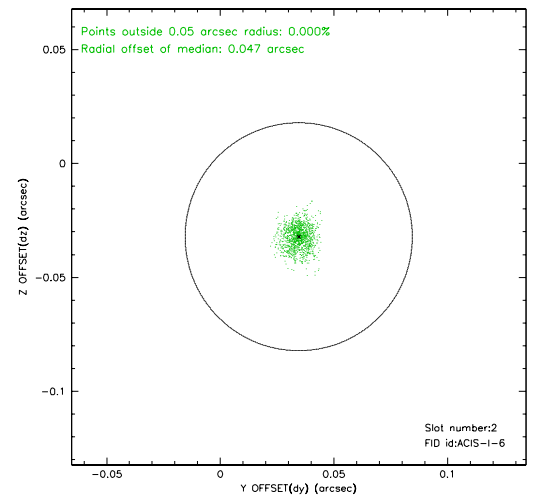
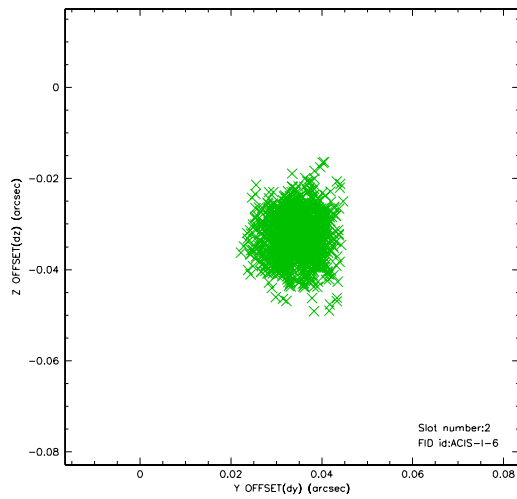
2.5.1 Slot 0



2.5.2 Slot 1



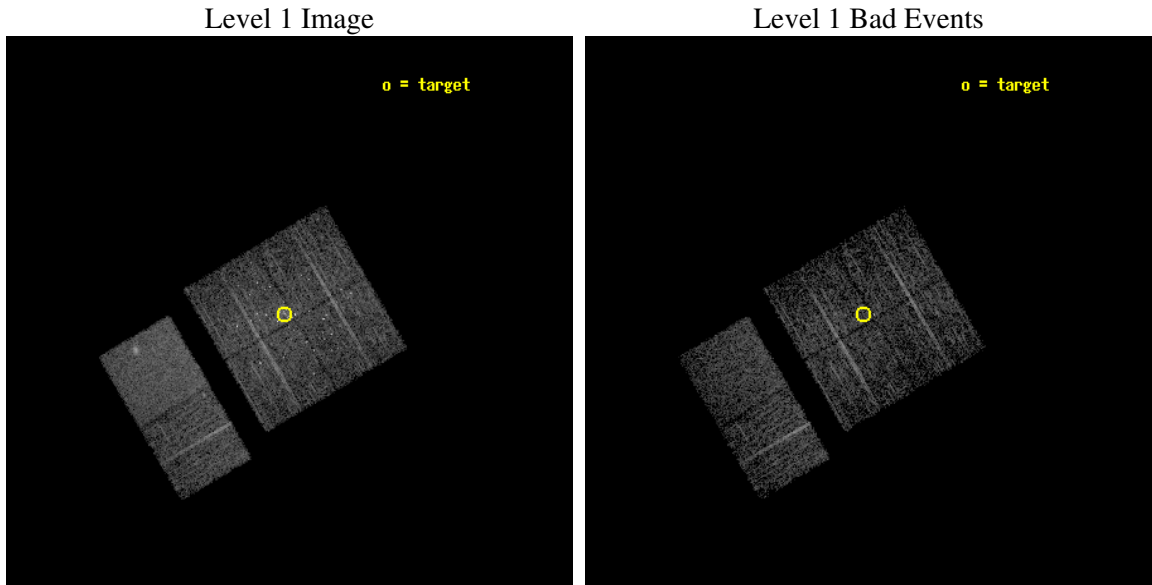
2.5.3 Slot 2



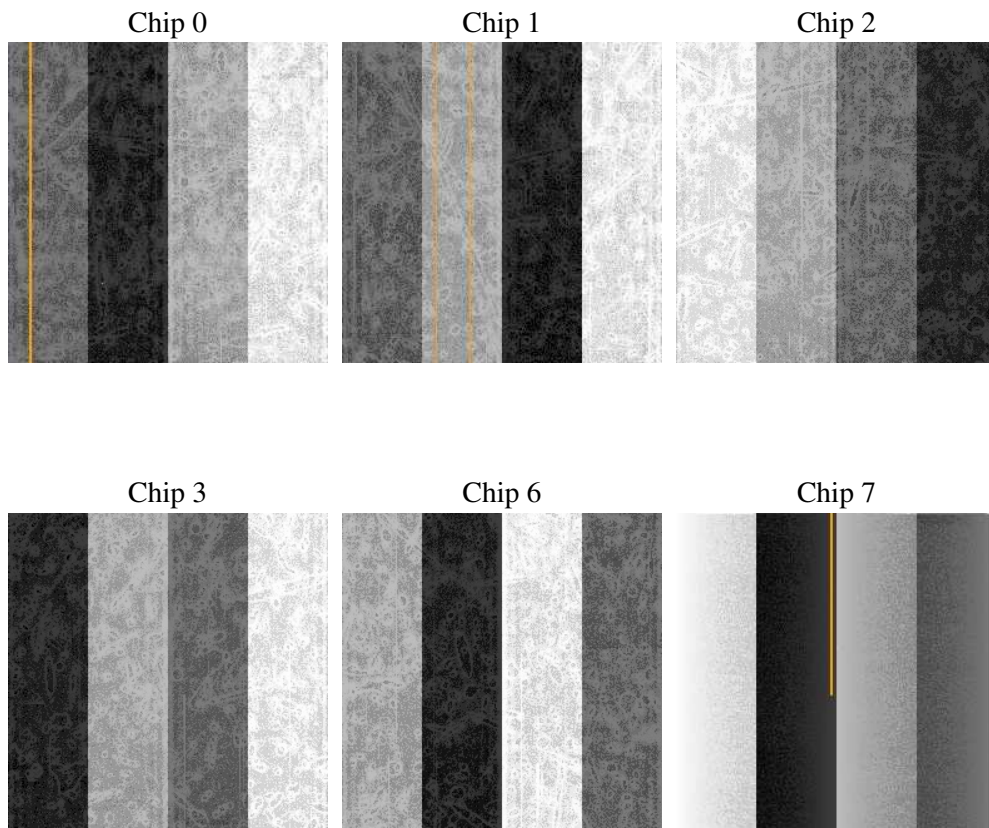
3 OBI Secondary

3.1 OBI

3.1.1 Images



3.1.2 Bias



3.1.3 Parameters

obi_num	1
ascdsver	7.6.8
caldsver	3.2.2
date	2006-06-30T09:43:33
revision	2

sched_exp_time	4850.000000
ontime	3947.5508945584
ontime0	3947.5508051217
ontime1	3947.5506156981
ontime2	3947.5507254899
ontime3	3947.5508945584
ontime6	3947.5508449972
ontime7	3947.5509841442
l1events	149144

3.1.4 Events

	ccd 0	ccd 1	ccd 2	ccd 3	ccd 6	ccd 7
level 1 events	22525	22312	23385	26524	23072	31326
rejected events	17202	17381	19162	18569	19913	18261
rejected %	76%	77%	81%	70%	86%	58%

	ccd 0	ccd 1	ccd 2	ccd 3	ccd 6	ccd 7
grade 0 events	3170	2628	2400	5420	1407	1037
	14%	11%	10%	20%	6%	3%
grade 1 events	28	83	29	80	10	27
	0%	0%	0%	0%	0%	0%
grade 2 events	924	858	744	1062	625	3311
	4%	3%	3%	4%	2%	10%
grade 3 events	351	373	294	422	256	705
	1%	1%	1%	1%	1%	2%
grade 4 events	285	355	273	439	250	687
	1%	1%	1%	1%	1%	2%
grade 5 events	901	997	846	1009	997	1964
	4%	4%	3%	3%	4%	6%
grade 6 events	599	726	516	623	628	7350
	2%	3%	2%	2%	2%	23%
grade 7 events	16267	16292	18283	17469	18899	16245
	72%	73%	78%	65%	81%	51%

4 Point Sources

A Summary

A.1 Status

V&V Scientist	Beth Sundheim
V&V Date (YYYY-MM-DD)	2006.06.30
V&V Edition	1
V&V Disposition and Status	OK
V&V Charge Time	4.866

A.2 Comments

Window constraint satisfied.