

V&V Reference Report

L2 ASCDS Version : 7.6.8

Observation 4238 - L2 Version 001
Chandra X-Ray Center

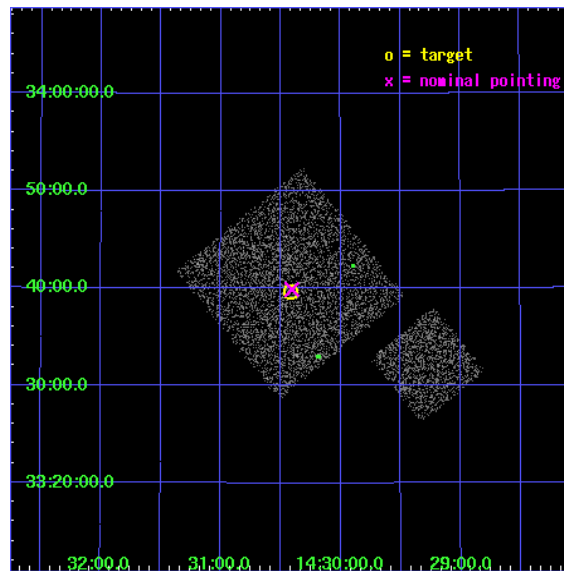
L2 Processing Date : Jul 29 2006

Contents

1	Front	2
2	OBI	3
2.1	OBI	3
2.1.1	Images	3
2.1.2	Bias	3
2.1.3	Parameters	4
2.1.4	Events	4
2.2	Compared Parameters	5
2.3	Aspect	6
2.4	Star Slots	9
2.4.1	Slot 3	9
2.4.2	Slot 4	10
2.4.3	Slot 5	11
2.4.4	Slot 6	12
2.4.5	Slot 7	13
2.5	FID Slots	14
2.5.1	Slot 0	14
2.5.2	Slot 1	15
2.5.3	Slot 2	16
3	Point Sources	17
A	Summary	18
A.1	Status	18
A.2	Comments	18

1 Front

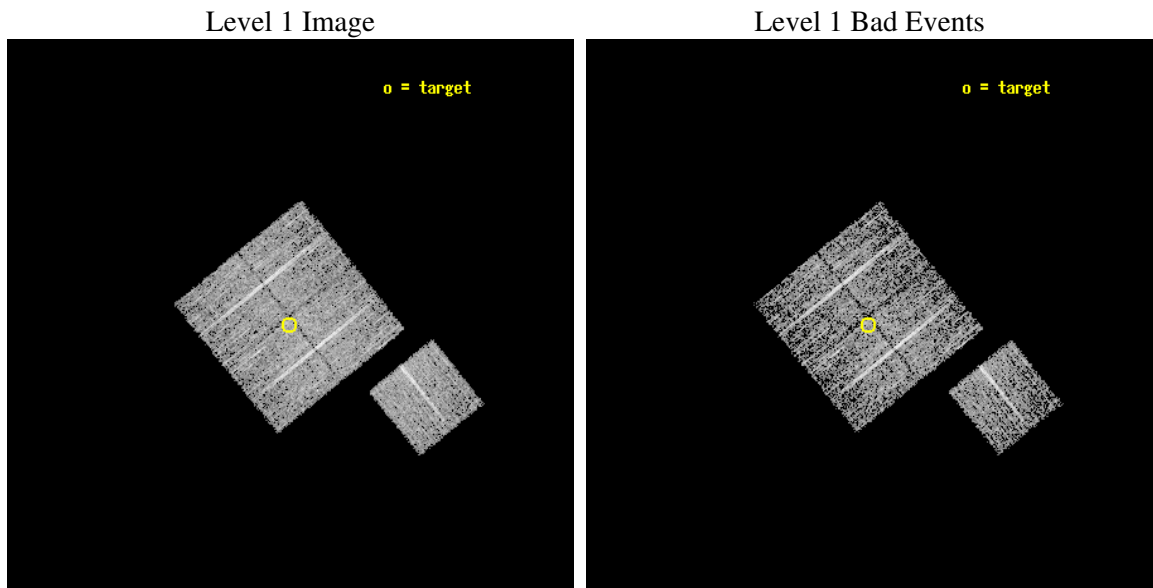
seq_num	900281
obs_id	4238
title	A CHANDRA WIDE-FIELD SURVEY TO MAP THE COSMIC WEB AND INVESTIGATE THE EVOLUTION OF NUCLEAR ACCRETION
observer	Dr. Christine Jones
object	SD49
dtcycle	0
cycle	P
ra_targ	217.604097
dec_targ	33.660612
ra_nom	217.60151513887
dec_nom	33.664667043784
roll_nom	141.01013563378
revision	3
ontime	4674.7999910116
livetime	4613.7202875914
ontime0	4674.7999910116
ontime1	4674.7999910116
ontime2	4674.7999910116
ontime3	4674.7999910116
ontime6	4674.7999910116
l2events	9002



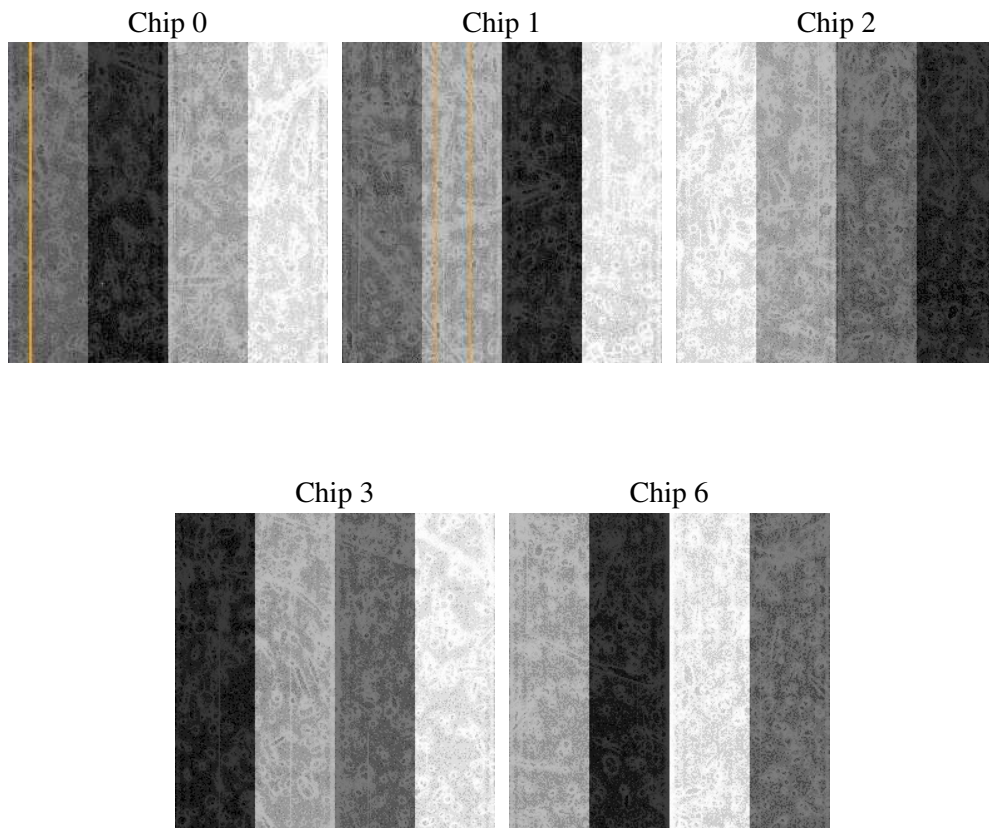
2 OBI

2.1 OBI

2.1.1 Images



2.1.2 Bias



2.1.3 Parameters

obi_num	1
ascdsver	7.6.8
caldsver	3.2.2
date	2006-07-29T20:23:43
revision	3

sched_exp_time	4900.000000
ontime	4680.1045373082
ontime0	4683.2455573678
ontime1	4680.1045373082
ontime2	4680.1045373082
ontime3	4680.1045373082
ontime6	4683.2455573678
l1events	110775

2.1.4 Events

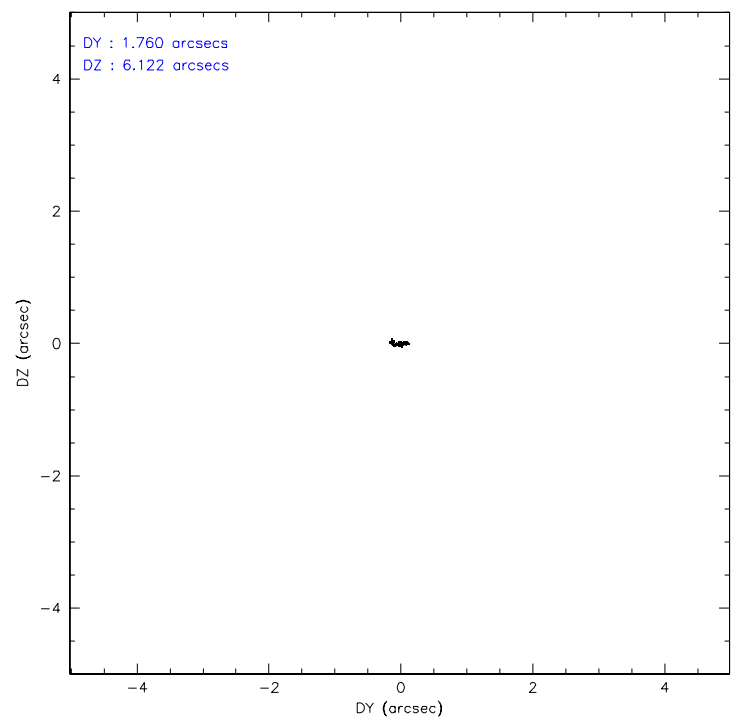
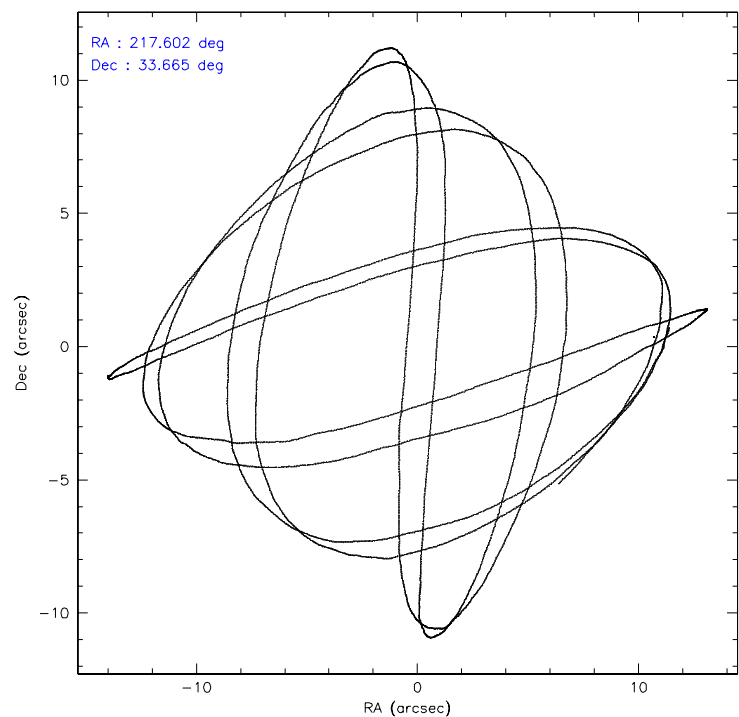
	ccd 0	ccd 1	ccd 2	ccd 3	ccd 6
level 1 events	21090	21076	23378	22717	22514
rejected events	18939	18824	21213	20563	20224
rejected %	89%	89%	90%	90%	89%

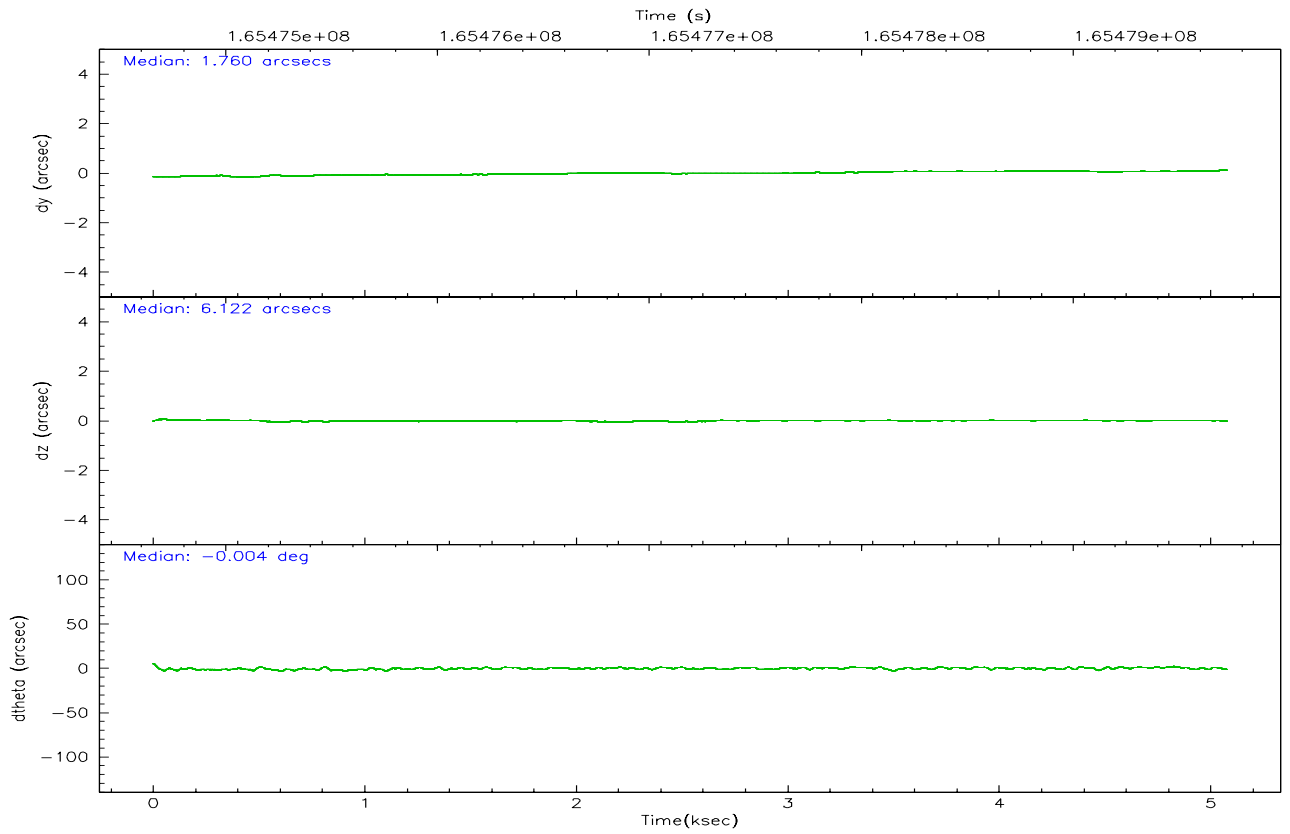
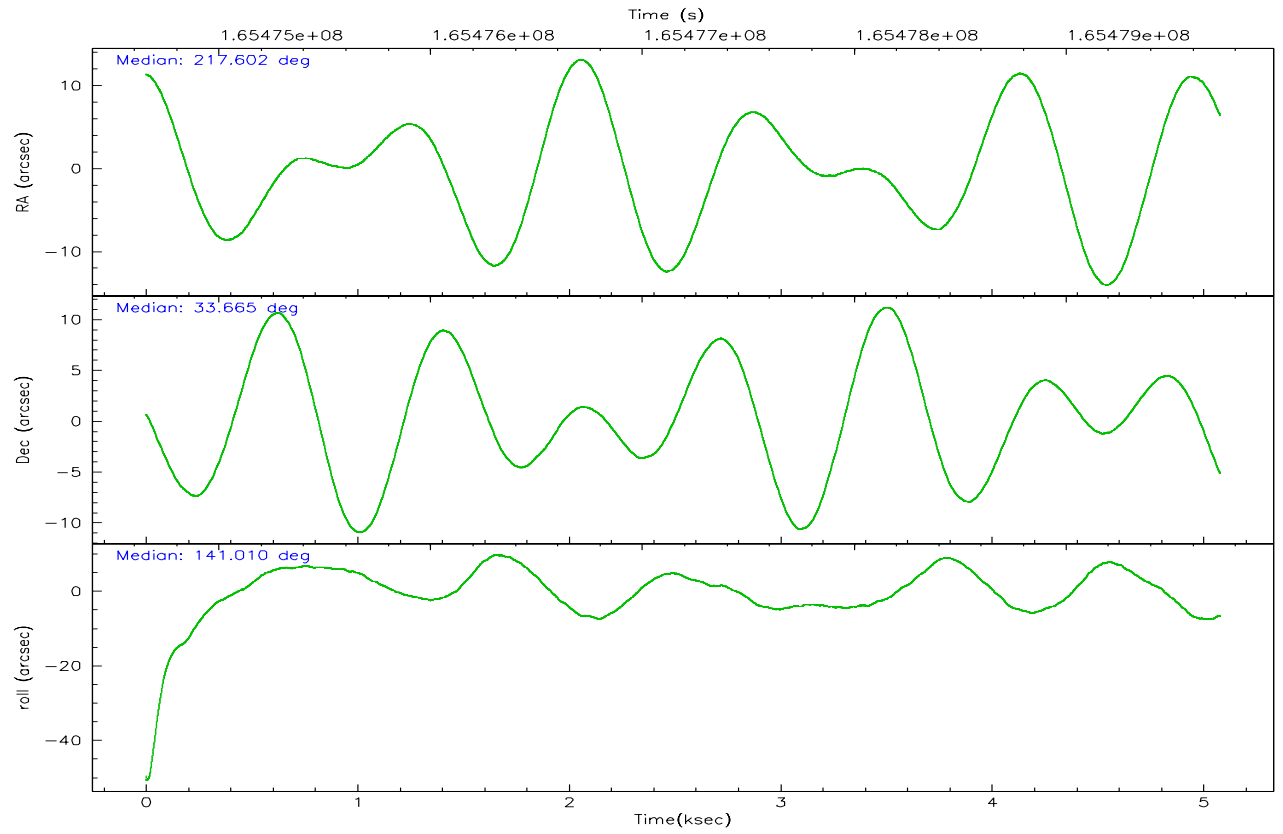
	ccd 0	ccd 1	ccd 2	ccd 3	ccd 6
grade 0 events	735	753	811	868	844
	3%	3%	3%	3%	3%
grade 1 events	10	7	13	11	9
	0%	0%	0%	0%	0%
grade 2 events	528	537	489	447	482
	2%	2%	2%	1%	2%
grade 3 events	274	249	236	220	283
	1%	1%	1%	0%	1%
grade 4 events	234	256	254	234	219
	1%	1%	1%	1%	0%
grade 5 events	693	735	643	728	740
	3%	3%	2%	3%	3%
grade 6 events	380	462	376	387	463
	1%	2%	1%	1%	2%
grade 7 events	18236	18077	20556	19822	19474
	86%	85%	87%	87%	86%

2.2 Compared Parameters

Parameter	Planned	Actual	Parameter	Planned	Actual
Instrument	ACIS	ACIS	Obspar format version number	6	6
Detector	ACIS-01236	ACIS-01236	Obspar file type	PREDICTED	ACTUAL
Grating	NONE	NONE	Obspar update status	NONE	UPDATED
Data mode	VFAINT	VFAINT	On-chip summing requested	N	N
Observation mode	POINTING	POINTING	Subarray requested	NONE	NONE
Pointing RA	217.633990	217.6015151388707	Alternating exposures requested	N	N
Pointing Dec	33.660530	33.66466704378445	Primary exposure time	0.000000	3.1
Pointing Roll	140.783430	141.0101356337814			
SIM focus pos (mm)	-0.782348	-0.7809083437167272			
SIM defocus (mm)	0	0.001439871863259334			
SIM translation stage pos (mm)	-233.592463	-233.5874344608287			
SIM translation stage offset (mm)	0	-0.005018542100998502			
Observation start time	165474834.184000	165474457.86598			
Observation start date	2003-03-31T05:12:50	2003-03-31T05:07:37			
Observation end time	165479734.184000	165479868.3287			
Observation end date	2003-03-31T06:34:30	2003-03-31T06:37:48			
Read mode	TIMED	TIMED			

2.3 Aspect



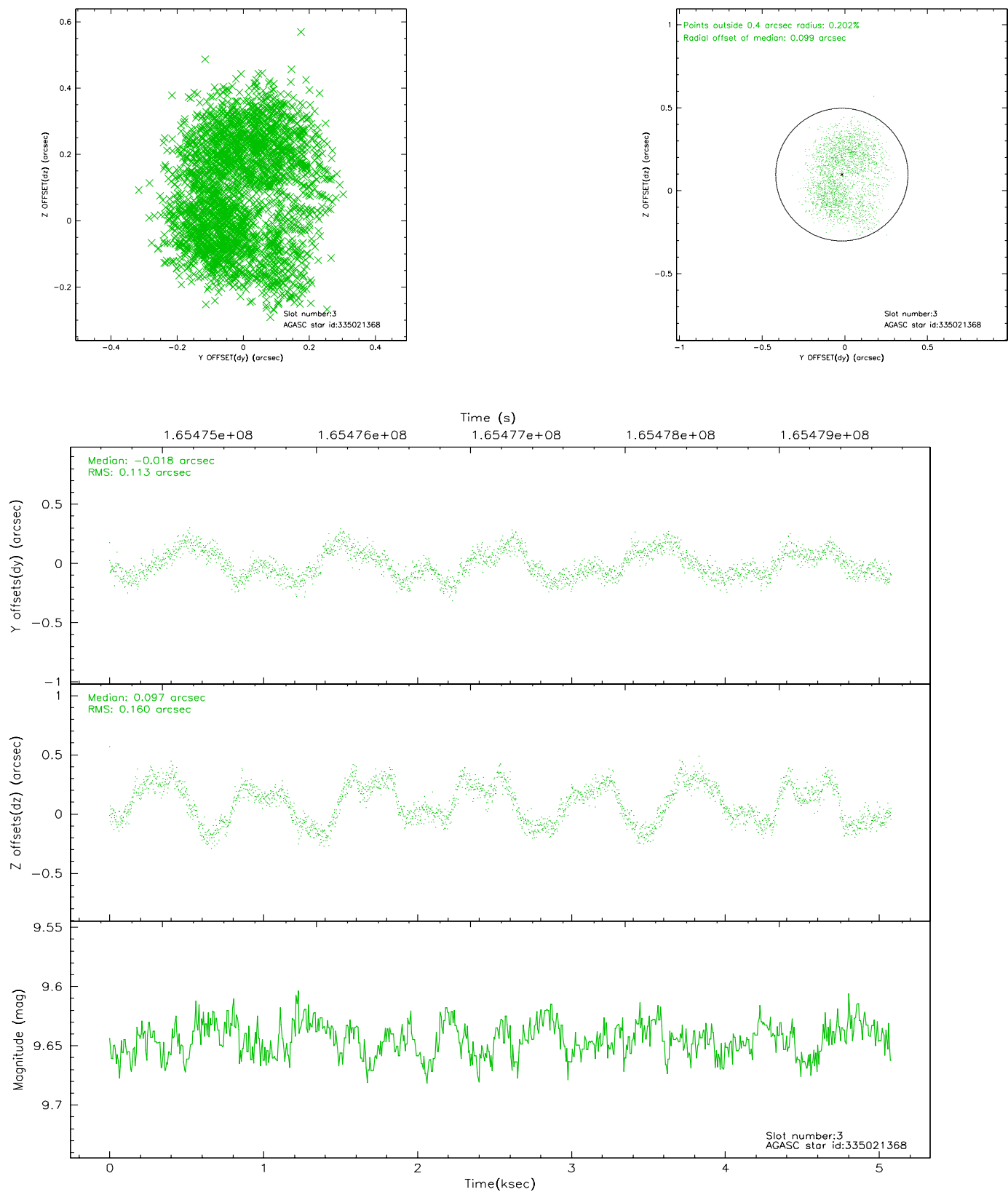


Slot Statistics

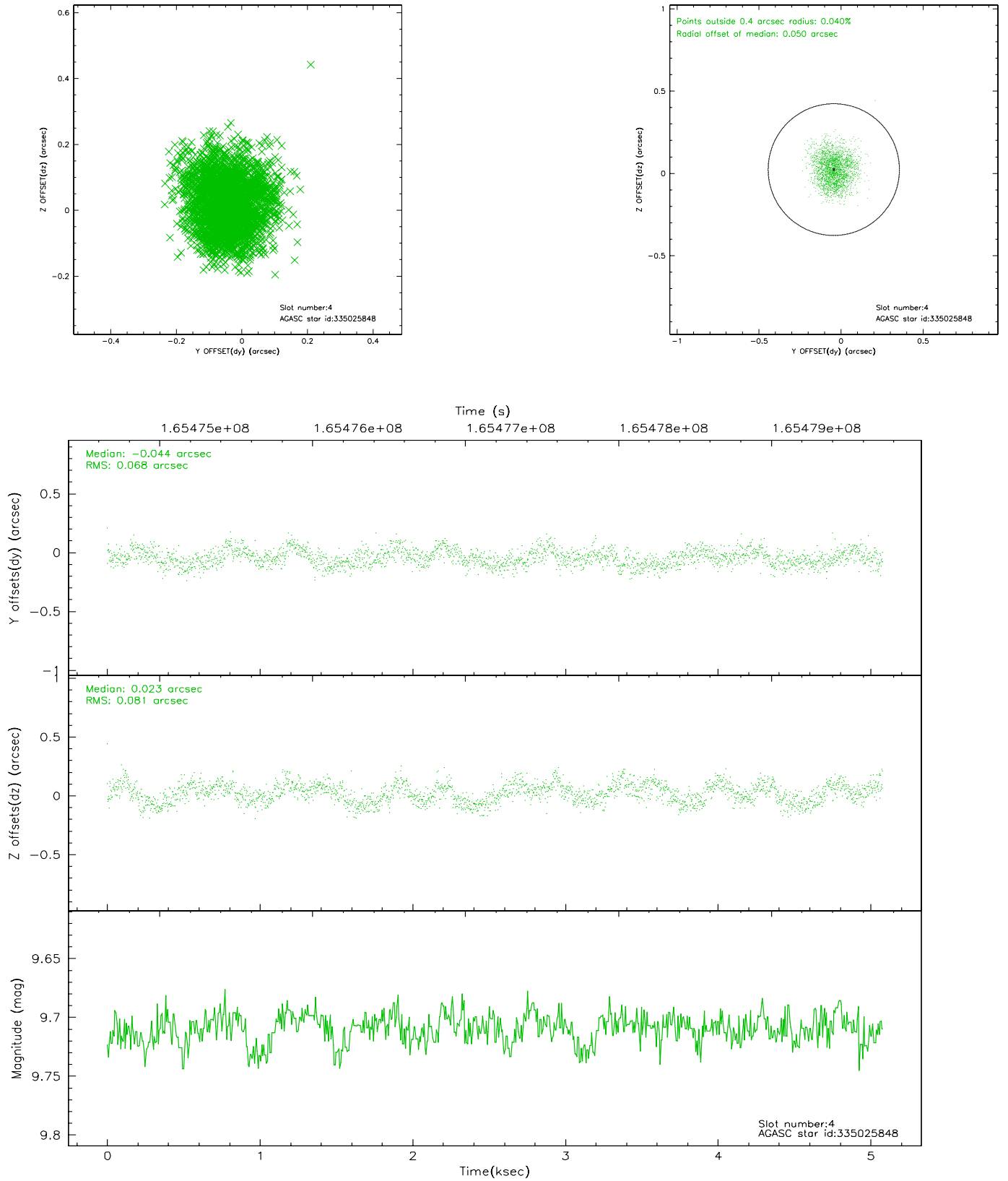
slot	status	id	mag	n_pts	med_dy	med_dz	dr1	dr2	ra	dec	mean_y	mean_z
0	FID	ACIS-I-1	7.25	1239	-0.096	0.042	0.010	0.017	0.000000	0.000000	938.00	-829.42
1	FID	ACIS-I-2	7.15	1239	-0.008	-0.015	0.013	0.024	0.000000	0.000000	-755.33	-836.57
2	FID	ACIS-I-4	7.18	1238	0.007	0.039	0.013	0.027	0.000000	0.000000	2157.40	1069.82
3	GUIDE	335021368	9.64	2479	-0.018	0.097	0.216	0.306	217.529643	33.934817	866.45	-567.83
4	GUIDE	335025848	9.71	2476	-0.044	0.023	0.114	0.176	217.530531	33.778292	508.86	-132.86
5	GUIDE	335027640	9.11	2479	-0.007	-0.011	0.105	0.161	218.092211	33.193770	-2129.22	426.83
6	GUIDE	335028696	9.20	2470	0.072	-0.094	0.074	0.123	217.260519	33.844112	1284.05	192.71
7	GUIDE	335029384	8.49	2478	-0.014	-0.018	0.085	0.131	217.848061	33.088477	-1800.98	1187.07

2.4 Star Slots

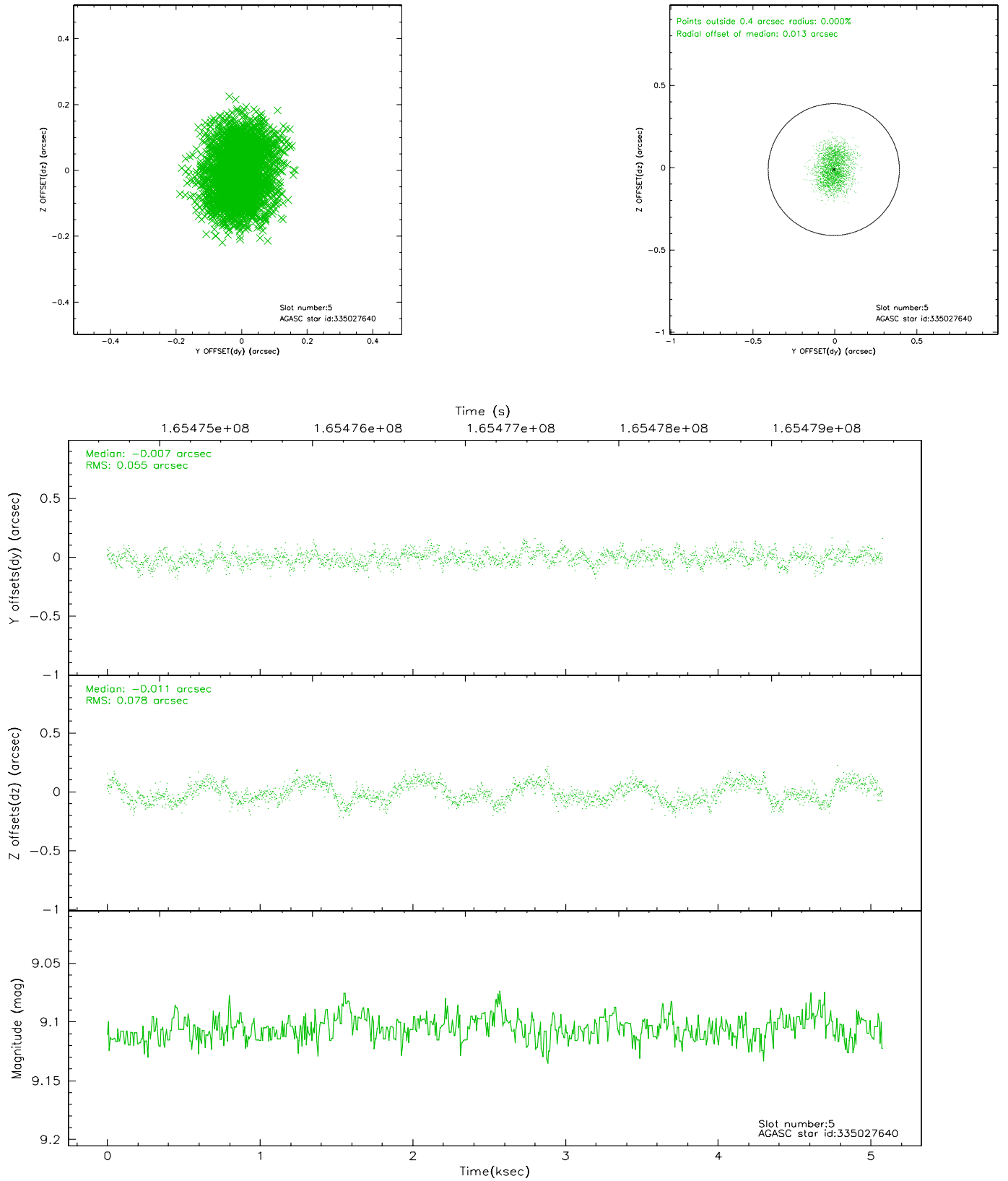
2.4.1 Slot 3



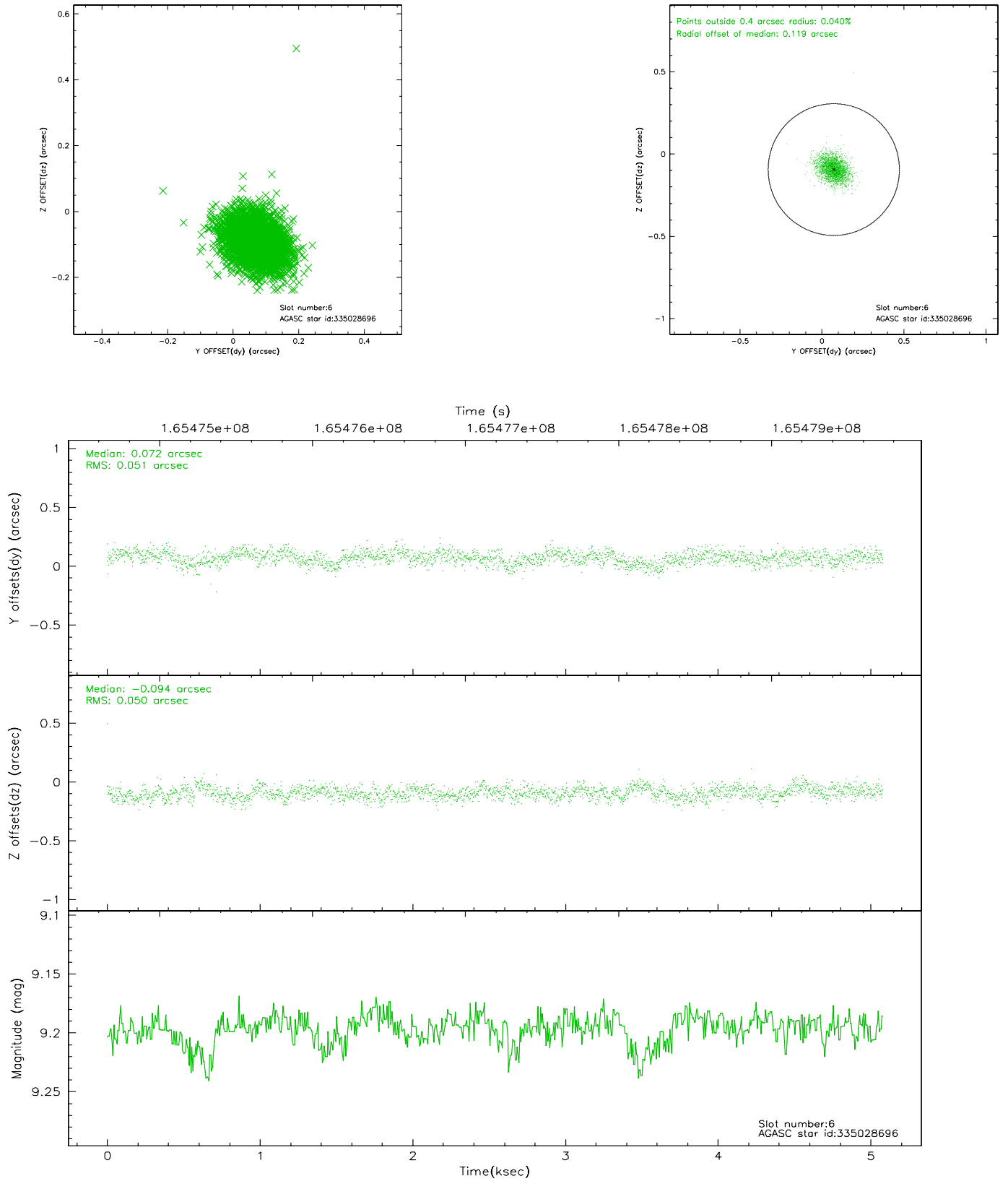
2.4.2 Slot 4



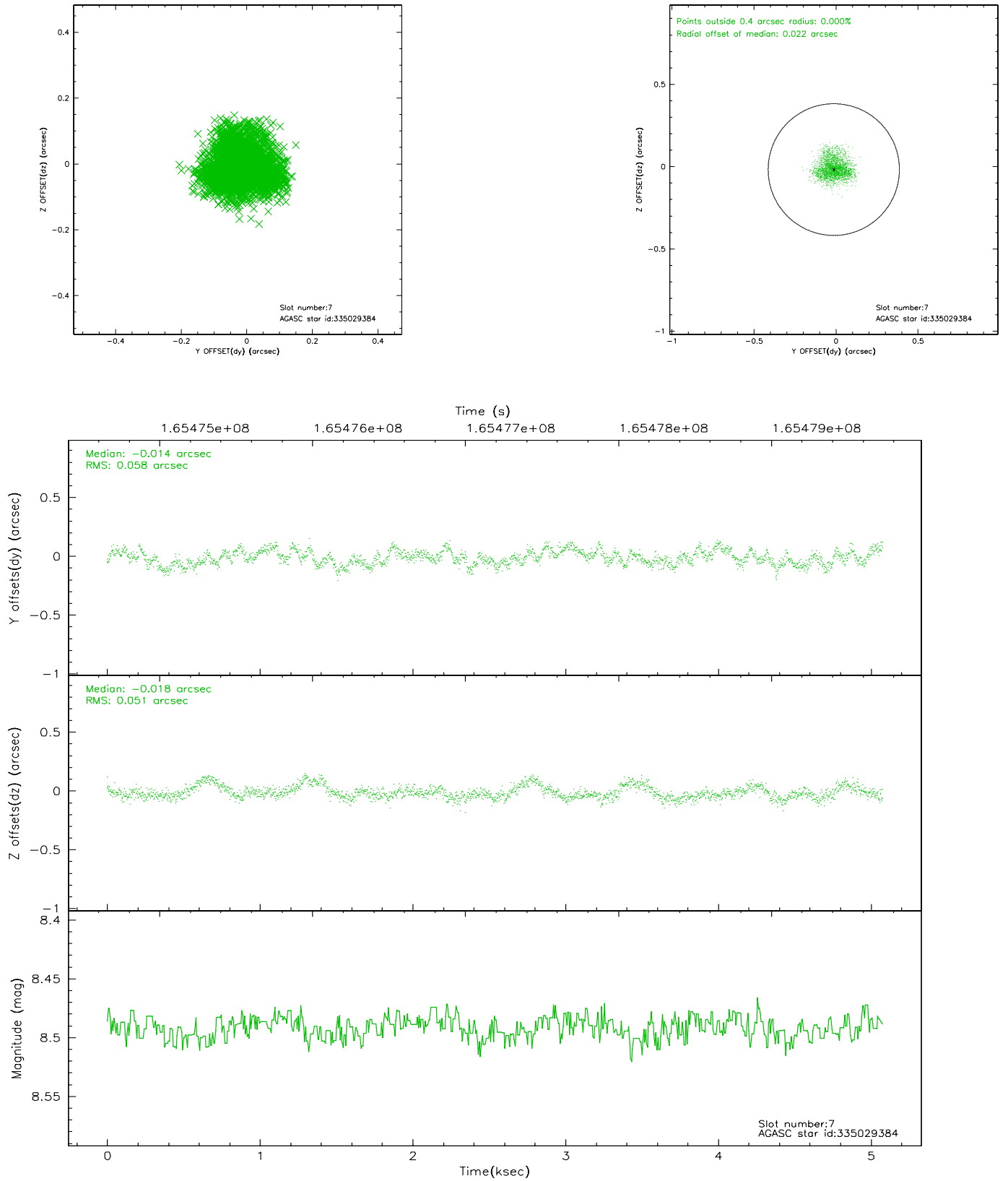
2.4.3 Slot 5



2.4.4 Slot 6

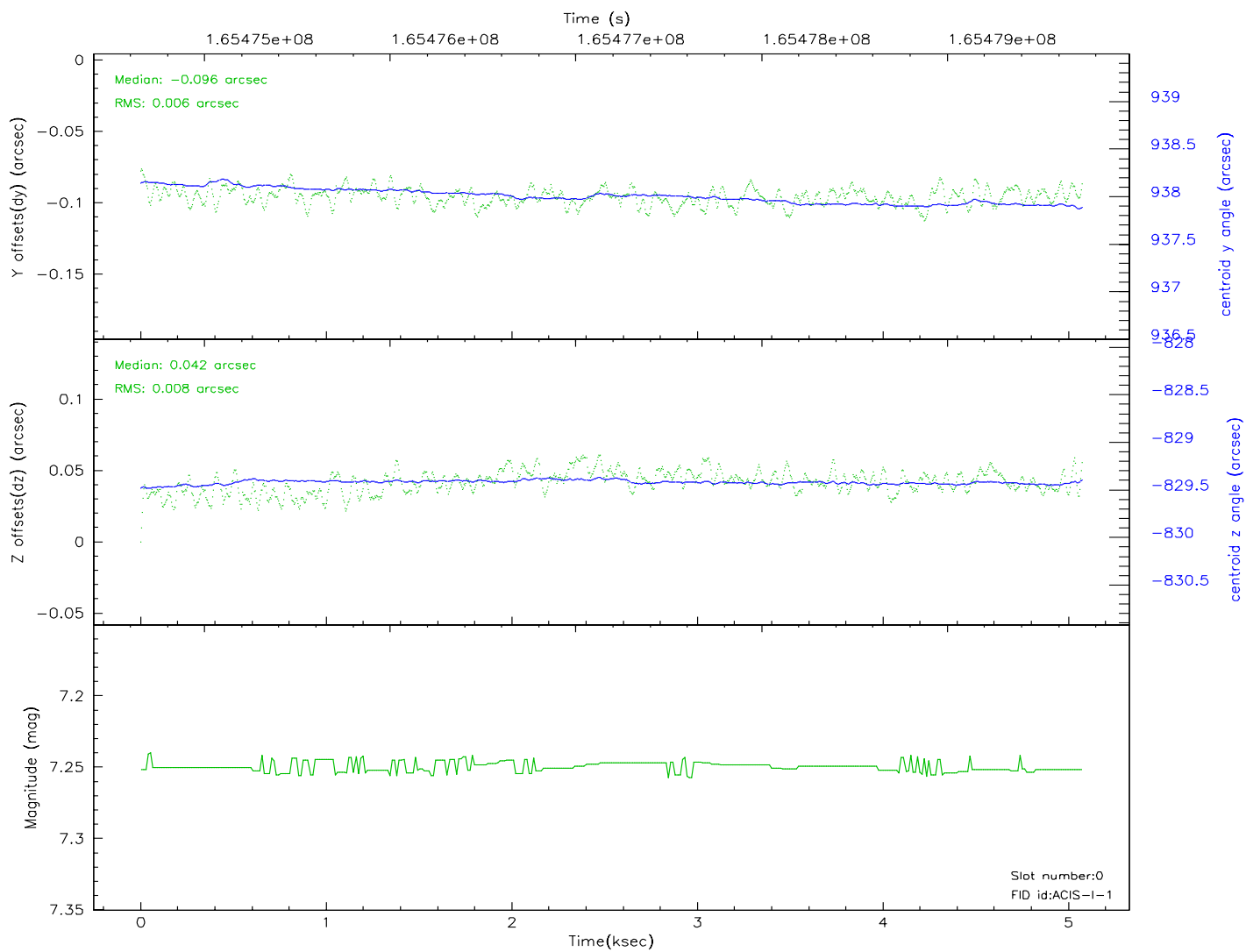
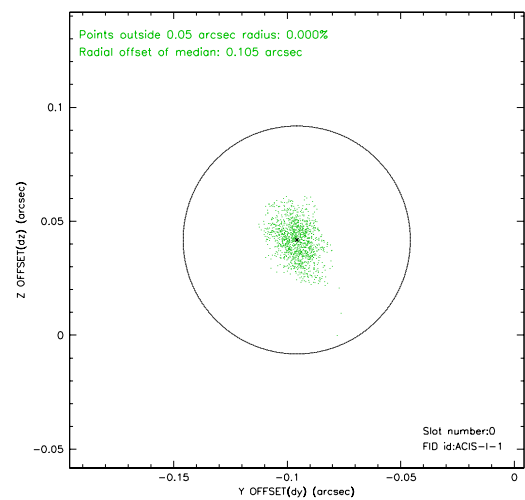
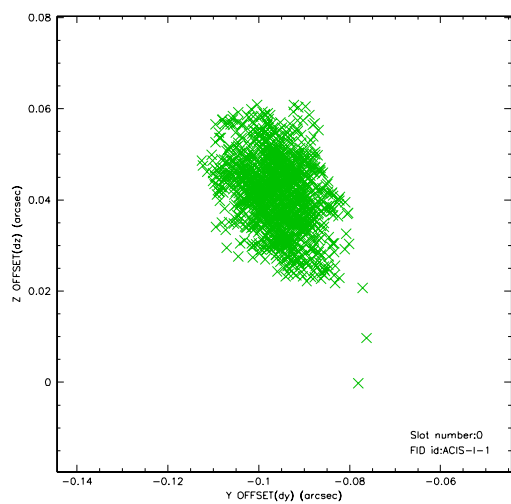


2.4.5 Slot 7

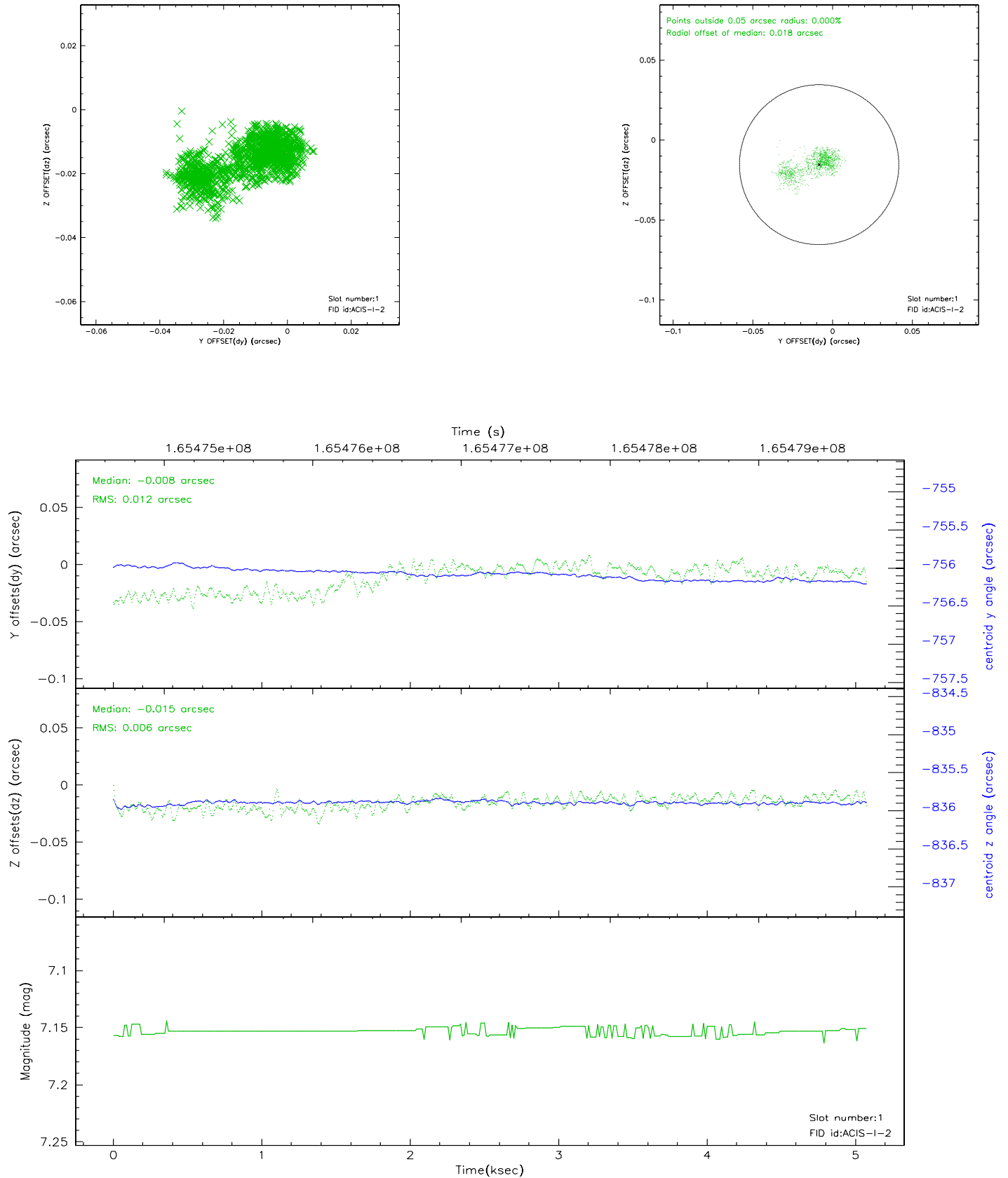


2.5 FID Slots

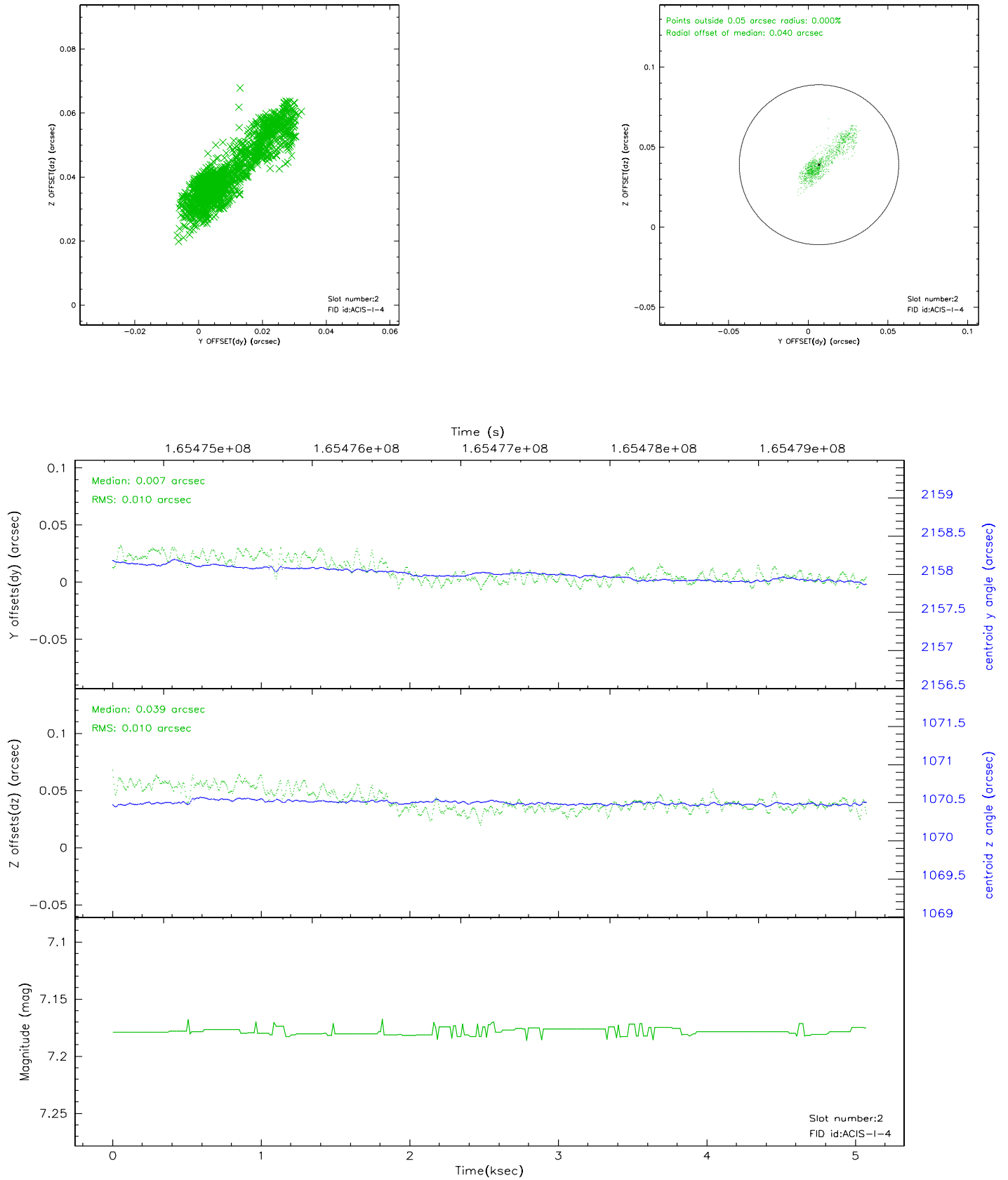
2.5.1 Slot 0



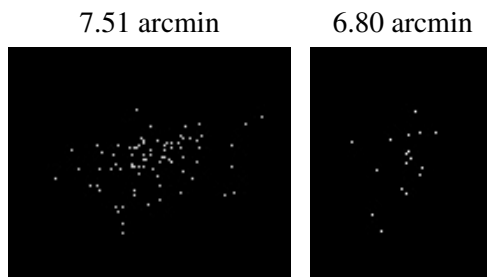
2.5.2 Slot 1



2.5.3 Slot 2



3 Point Sources



A Summary

A.1 Status

V&V Scientist	Jen Lauer
V&V Date (YYYY-MM-DD)	2006.07.30
V&V Edition	1
V&V Disposition and Status	OK
V&V Charge Time	4.675

A.2 Comments