

V&V Reference Report

L2 ASCDS Version : 8.4.5

Observation 4188 - L2 Version 4
Chandra X-Ray Center

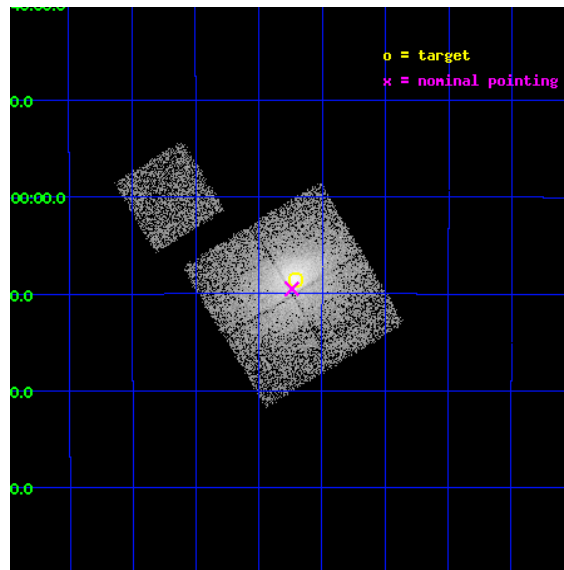
L2 Processing Date : Jan 30 2013

Contents

1	Front	2
2	OBI	3
2.1	OBI	3
2.1.1	Images	3
2.1.2	Bias	3
2.1.3	Parameters	4
2.1.4	Events	4
2.2	Compared Parameters	5
2.3	Aspect	6
2.4	Star Slots	9
2.4.1	Slot 3	9
2.4.2	Slot 4	10
2.4.3	Slot 5	11
2.4.4	Slot 7	12
2.5	FID Slots	13
2.5.1	Slot 0	13
2.5.2	Slot 1	14
2.5.3	Slot 2	15
A	Summary	16
A.1	Status	16
A.2	Comments	16

1 Front

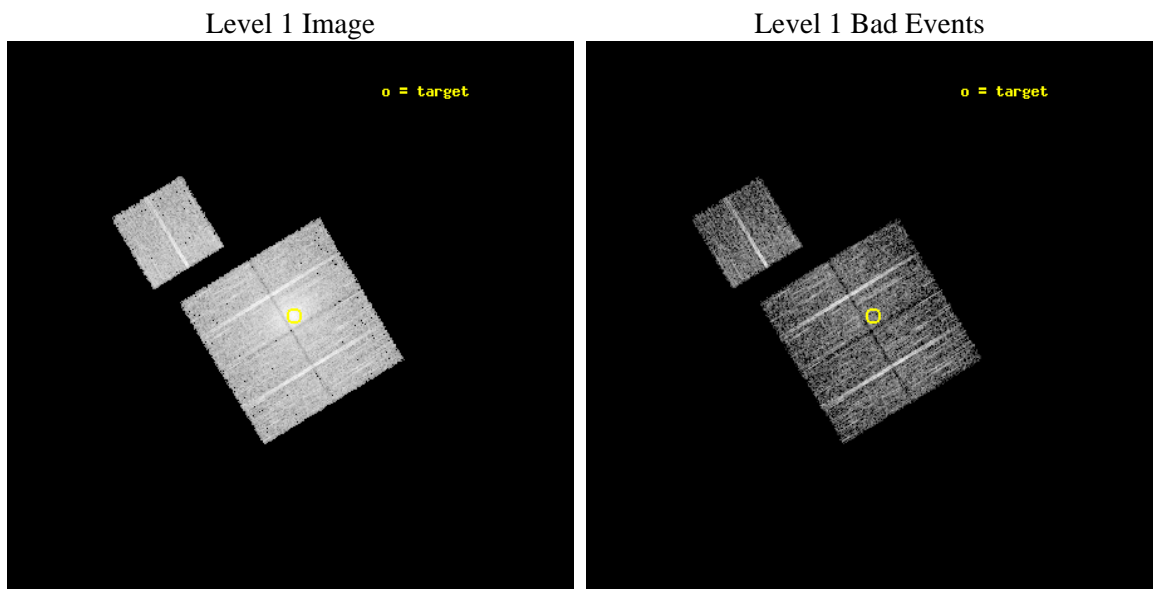
seq_num	800344	Sequence number
obs_id	4188	Observation id
title	THE HIFLUGCS CLUSTER SURVEY: A CORNERSTONE FOR COSMOLOGY	Proposal
observer	Dr. CRAIG SARAZIN	Principal investigator
object	A4038	Source name
dtcycle	0	
cycle	P	events from which exps? Prim/Second/Both
ra_targ	356.928333	Observer's specified target RA [deg]
dec_targ	-28.143056	Observer's specified target Dec [deg]
ra_nom	356.93464187354	Nominal RA [deg]
dec_nom	-28.158266421289	Nominal Dec [deg]
roll_nom	328.86306922265	Nominal Roll [deg]
revision	4	Processing version of data
ontime	6153.4999881387	Sum of GTIs [s]
livetime	6073.0999806529	Livetime [s]
ontime0	6153.4999881387	Sum of GTIs [s]
ontime1	6153.4999881387	Sum of GTIs [s]
ontime2	6153.4999881387	Sum of GTIs [s]
ontime3	6153.4999881387	Sum of GTIs [s]
ontime6	6153.4999881387	Sum of GTIs [s]
l2events	48922	Number of level 2 events



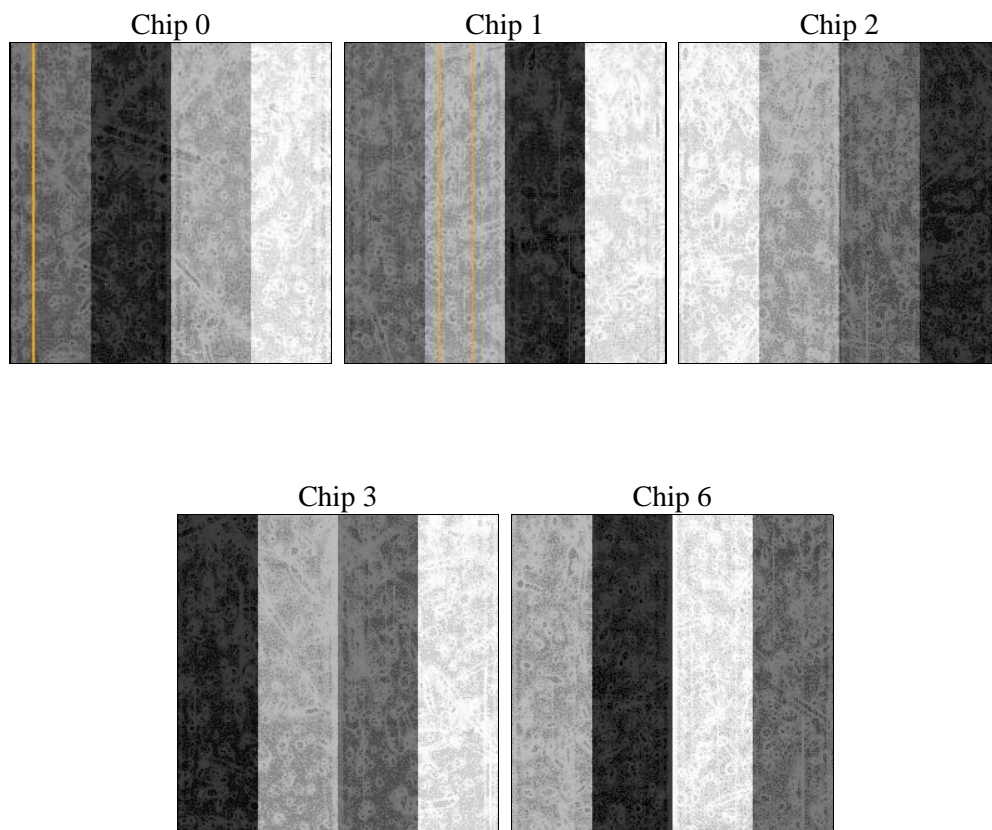
2 OBI

2.1 OBI

2.1.1 Images



2.1.2 Bias



2.1.3 Parameters

obi_num	1	Obi number	sched_exp_time	6000.729000	[s] Scheduled observation exposure time
ascdsver	8.5.1.1	Processing system revision	ontime	6153.4999881387	Sum of GTIs [s]
caldsver	4.5.5	 	ontime0	6153.4999881387	Sum of GTIs [s]
date	2013-01-30T22:41:37	Date and time of file creation	ontime1	6153.4999881387	Sum of GTIs [s]
revision	4	Processing version of data	ontime2	6153.4999881387	Sum of GTIs [s]
			ontime3	6153.4999881387	Sum of GTIs [s]
			ontime6	6153.4999881387	Sum of GTIs [s]
			l1events	246702	Number of level 1 events

2.1.4 Events

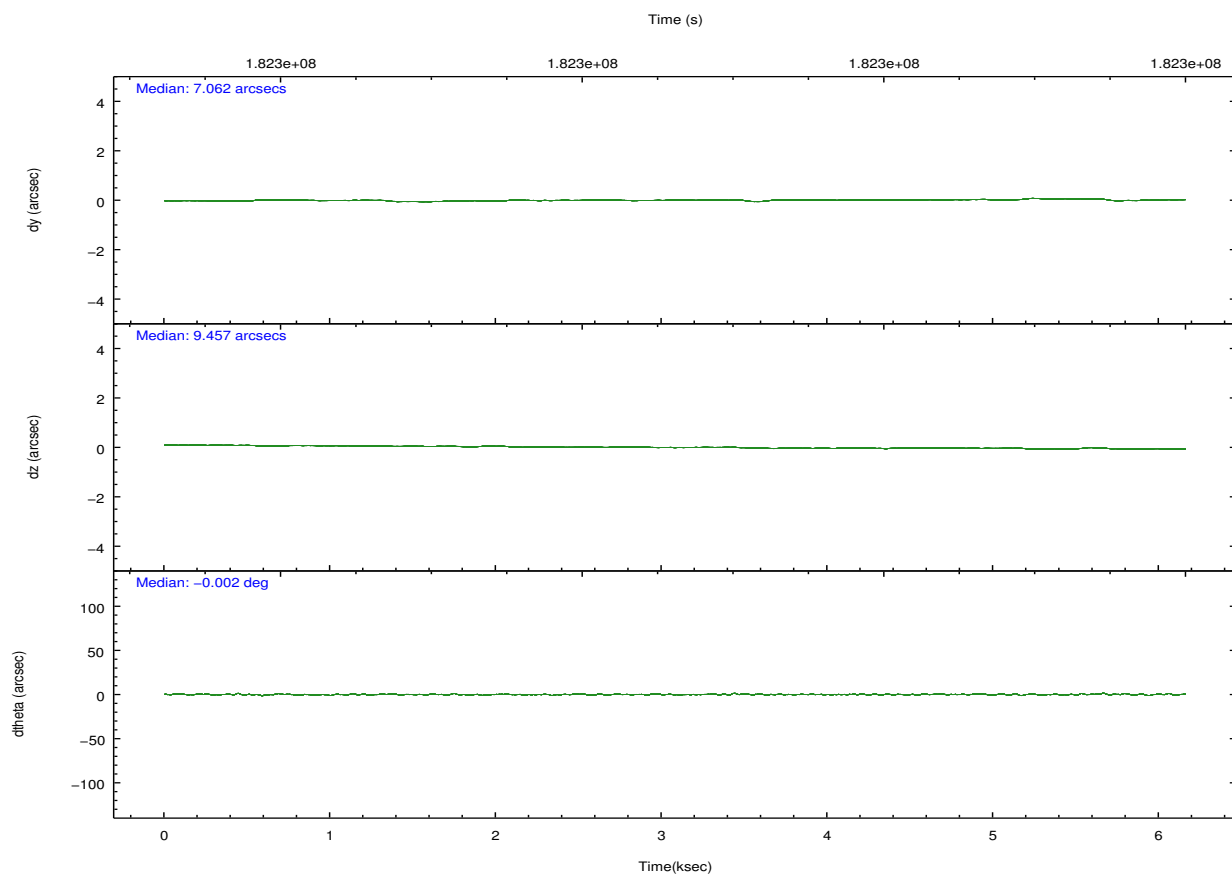
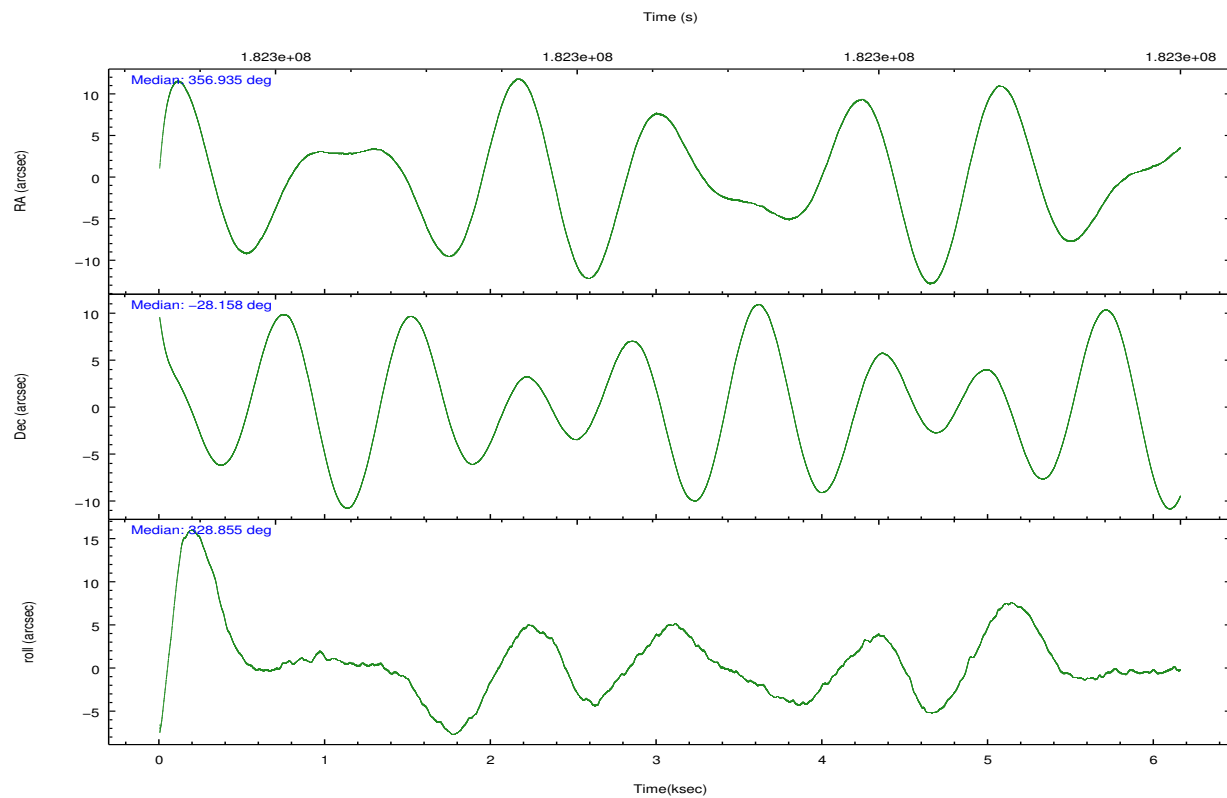
	ccd 0	ccd 1	ccd 2	ccd 3	ccd 6
level 1 events	44283	46959	53666	58333	43461
rejected events	36816	38056	41265	37647	39458
rejected %	83%	81%	76%	64%	90%

	ccd 0	ccd 1	ccd 2	ccd 3	ccd 6
grade 0 events	4980	6138	9455	16533	1985
	11%	13%	17%	28%	4%
grade 1 events	33	41	51	96	14
	0%	0%	0%	0%	0%
grade 2 events	1426	1507	1819	2465	952
	3%	3%	3%	4%	2%
grade 3 events	647	708	770	916	511
	1%	1%	1%	1%	1%
grade 4 events	575	706	719	954	509
	1%	1%	1%	1%	1%
grade 5 events	1502	1599	1390	1701	1660
	3%	3%	2%	2%	3%
grade 6 events	918	1026	888	1069	1000
	2%	2%	1%	1%	2%
grade 7 events	34202	35234	38574	34599	36830
	77%	75%	71%	59%	84%

2.2 Compared Parameters

Parameter	Planned	Actual	Parameter	Planned	Actual
Instrument	ACIS	ACIS	Obspar format version number	7	7
Detector	ACIS-01236	ACIS-01236	Obspar file type	PREDICTED	ACTUAL
Grating	NONE	NONE	Obspar update status	NONE	UPDATED
Data mode	VFAINT	VFAINT	Number of optional ACIS chips dropped	0	0
Observation mode	POINTING	POINTING	On-chip summing requested	N	N
[deg] Pointing RA	356.903511	356.9346418735361	Subarray requested	NONE	NONE
[deg] Pointing Dec	-28.157824	-28.15826642128922	Alternating exposures requested	N	N
[deg] Pointing Roll	328.639700	328.863069222651	[s] Primary exposure time	0.000000	3.1
[mm] SIM focus pos	-0.782348	-0.7809083437167272			
[mm] SIM defocus	0	0.001439871863259334			
[mm] SIM translation stage pos	-233.592463	-233.5874344608287			
[mm] SIM translation stage offset	0	-0.005018542100998502			
[s] Observation start time (MET)	182295700.184000	182293914.71953			
Observation start date	2003-10-11T21:40:36	2003-10-11T21:11:54			
[s] Observation end time (MET)	182301701.184000	182302015.29488			
Observation end date	2003-10-11T23:20:37	2003-10-11T23:26:55			
Read mode	TIMED	TIMED			

2.3 Aspect

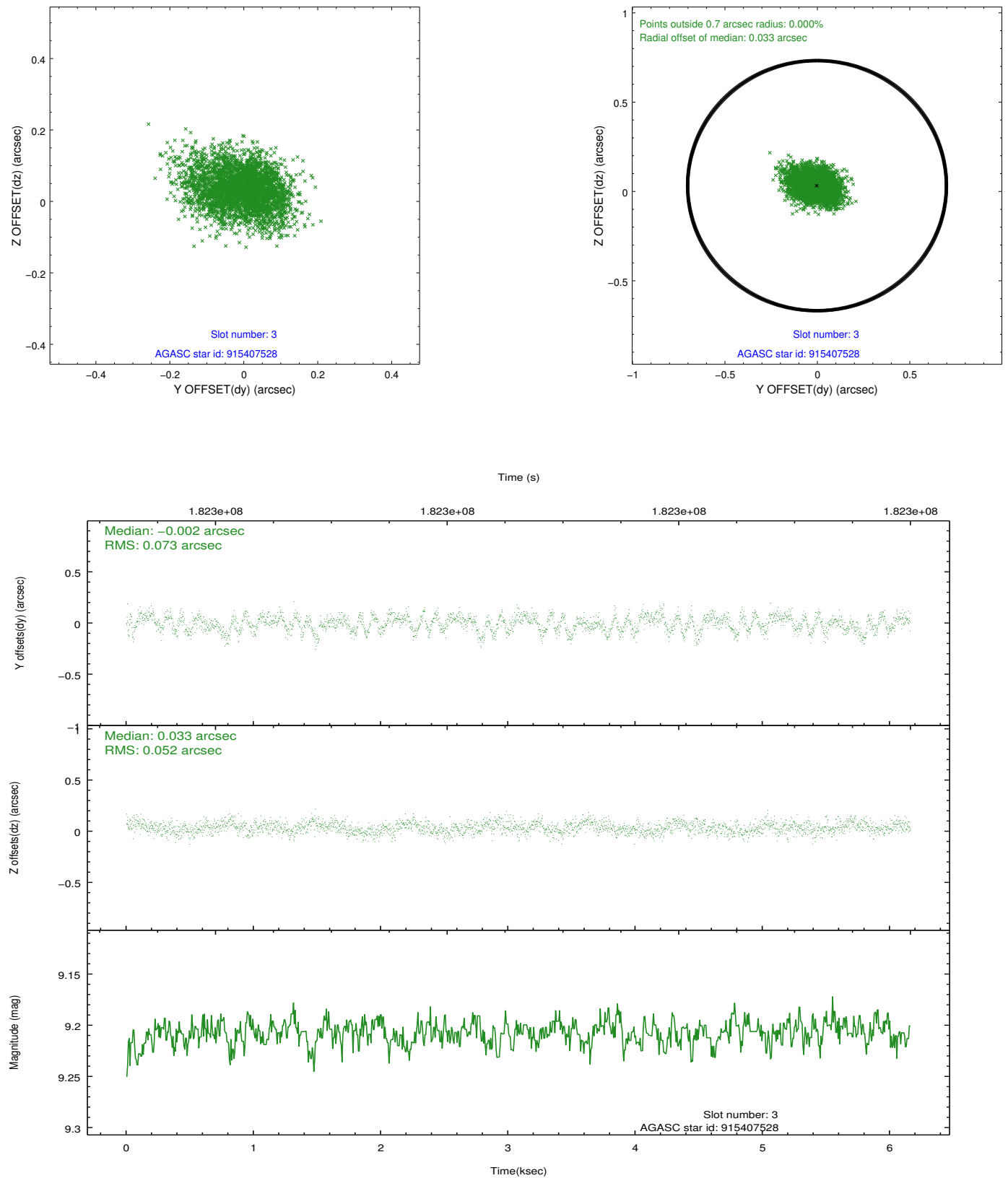


Slot Statistics

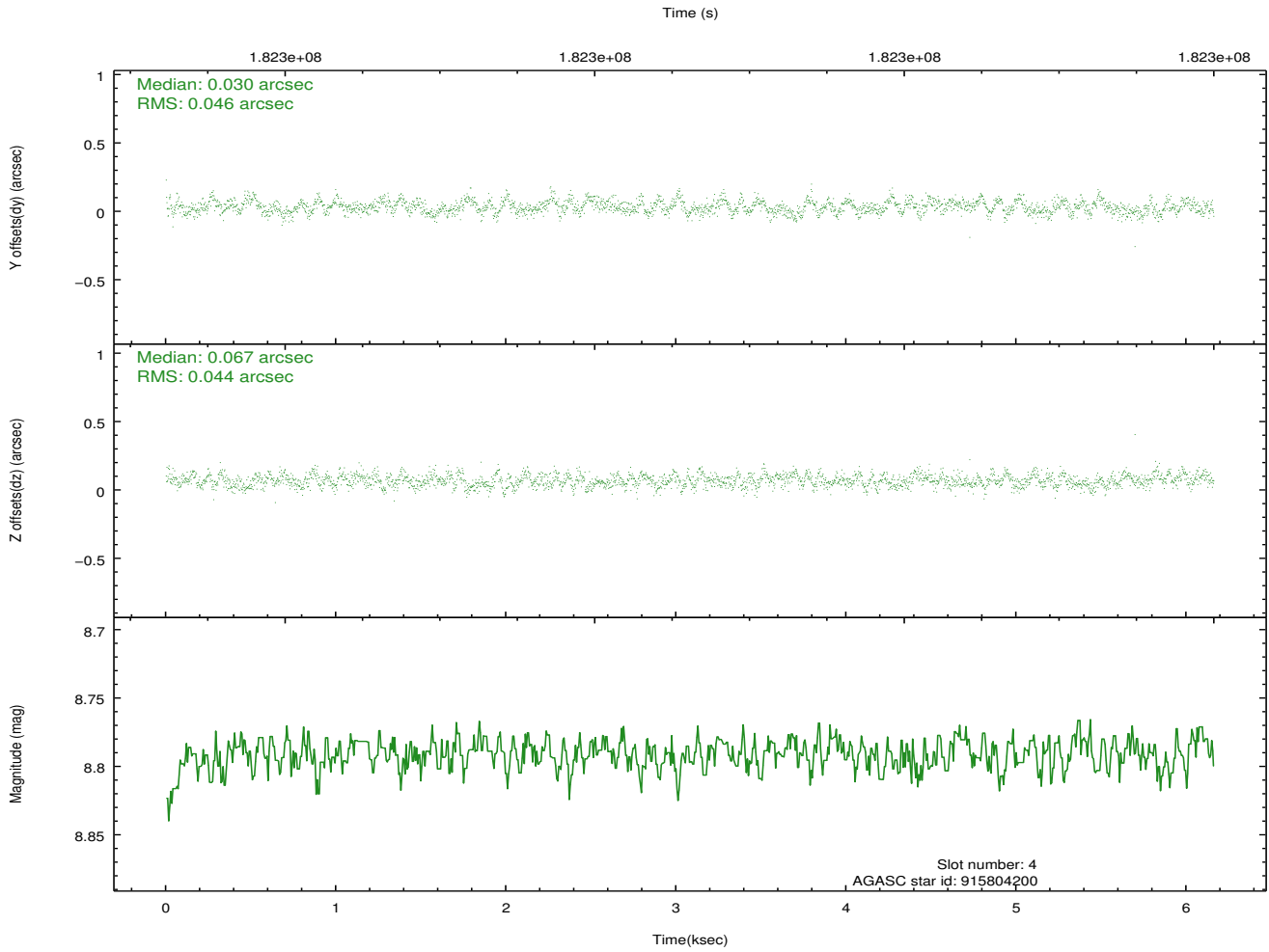
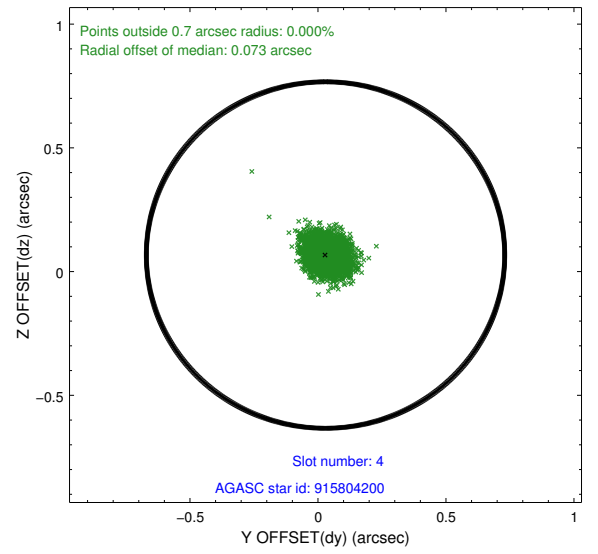
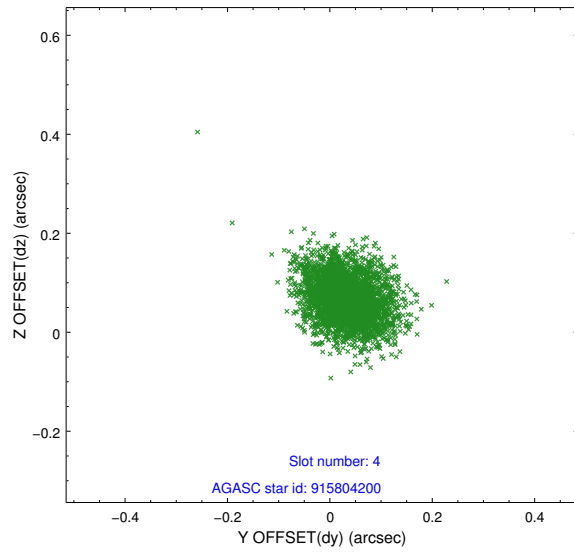
slot	status	id	mag	n_pts	med_dy	med_dz	dr1	dr2	ra	dec	mean_y	mean_z
0	FID	ACIS-I-1	7.24	1503	-0.010	0.043	0.007	0.012	0.000000	0.000000	932.61	-832.87
1	FID	ACIS-I-5	7.23	1503	-0.129	0.025	0.006	0.010	0.000000	0.000000	-1815.09	1064.11
2	FID	ACIS-I-6	7.25	1501	0.047	0.002	0.007	0.011	0.000000	0.000000	397.17	1709.69
3	GUIDE	915407528	9.21	3003	-0.002	0.033	0.095	0.155	356.735051	-27.321188	-2028.01	2291.27
4	GUIDE	915804200	8.79	3005	0.030	0.067	0.066	0.109	356.699199	-28.786294	626.67	-2266.79
5	GUIDE	915940872	8.00	3005	0.014	-0.088	0.059	0.094	357.438295	-28.341635	1793.35	313.31
6	OMITTED		0.00	0	0.000	0.000	0.000	0.000	0.000000	0.000000	0.00	0.00
7	GUIDE	915807248	9.94	1500	-0.080	-0.028	0.137	0.223	357.192532	-27.548911	-352.01	2351.38

2.4 Star Slots

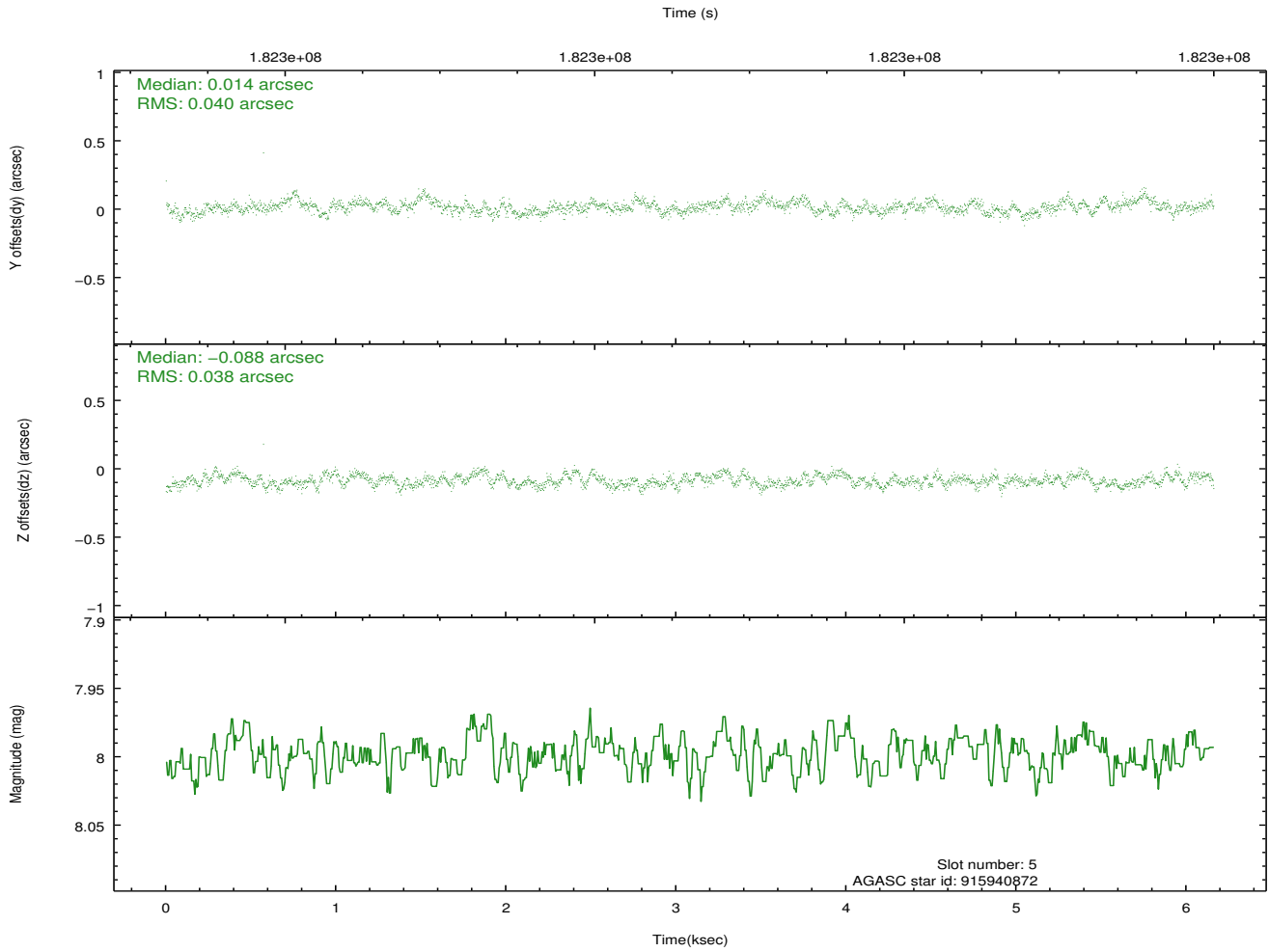
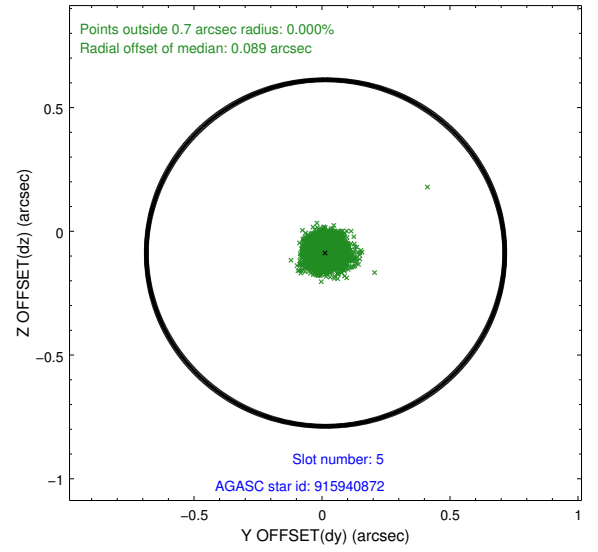
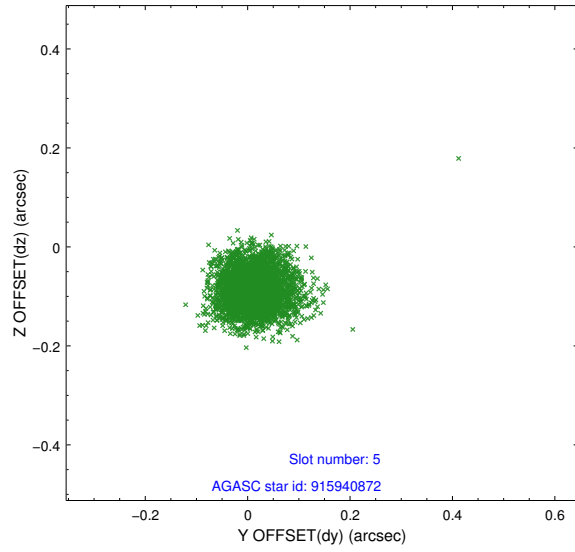
2.4.1 Slot 3



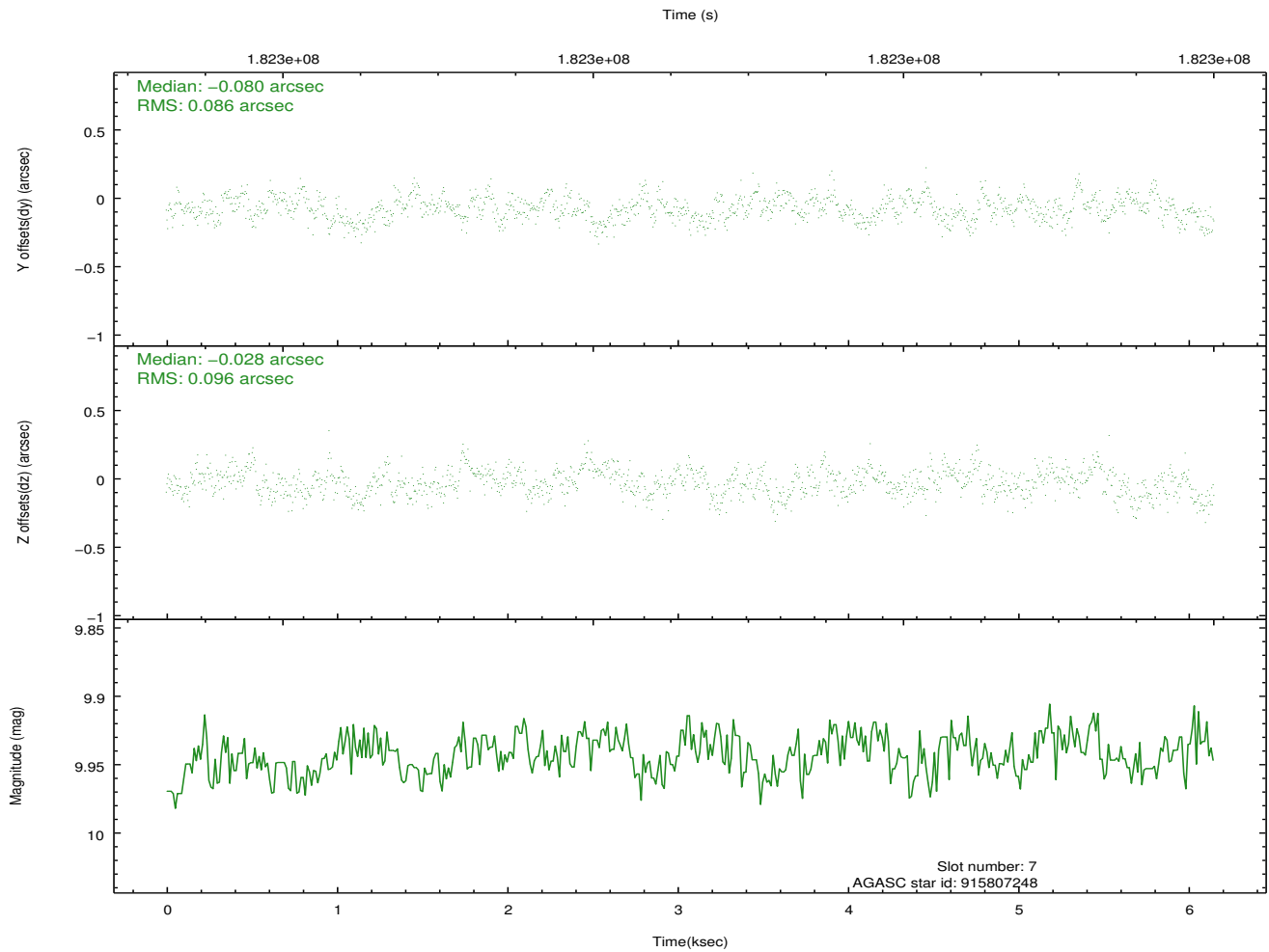
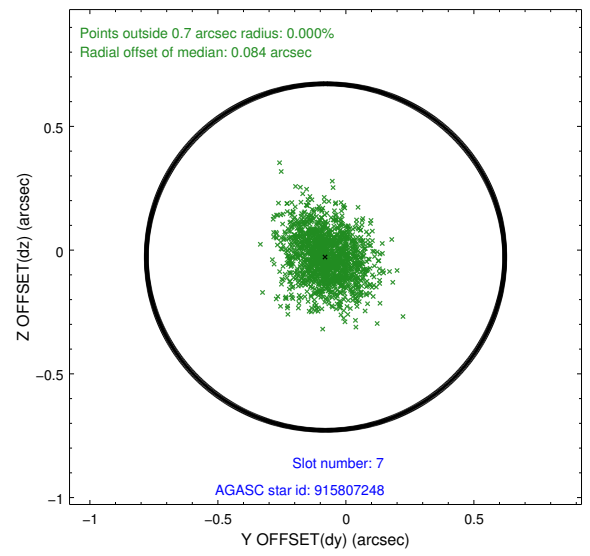
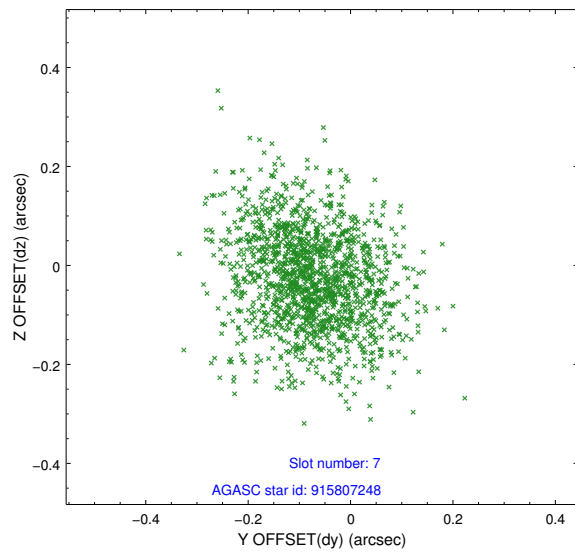
2.4.2 Slot 4



2.4.3 Slot 5

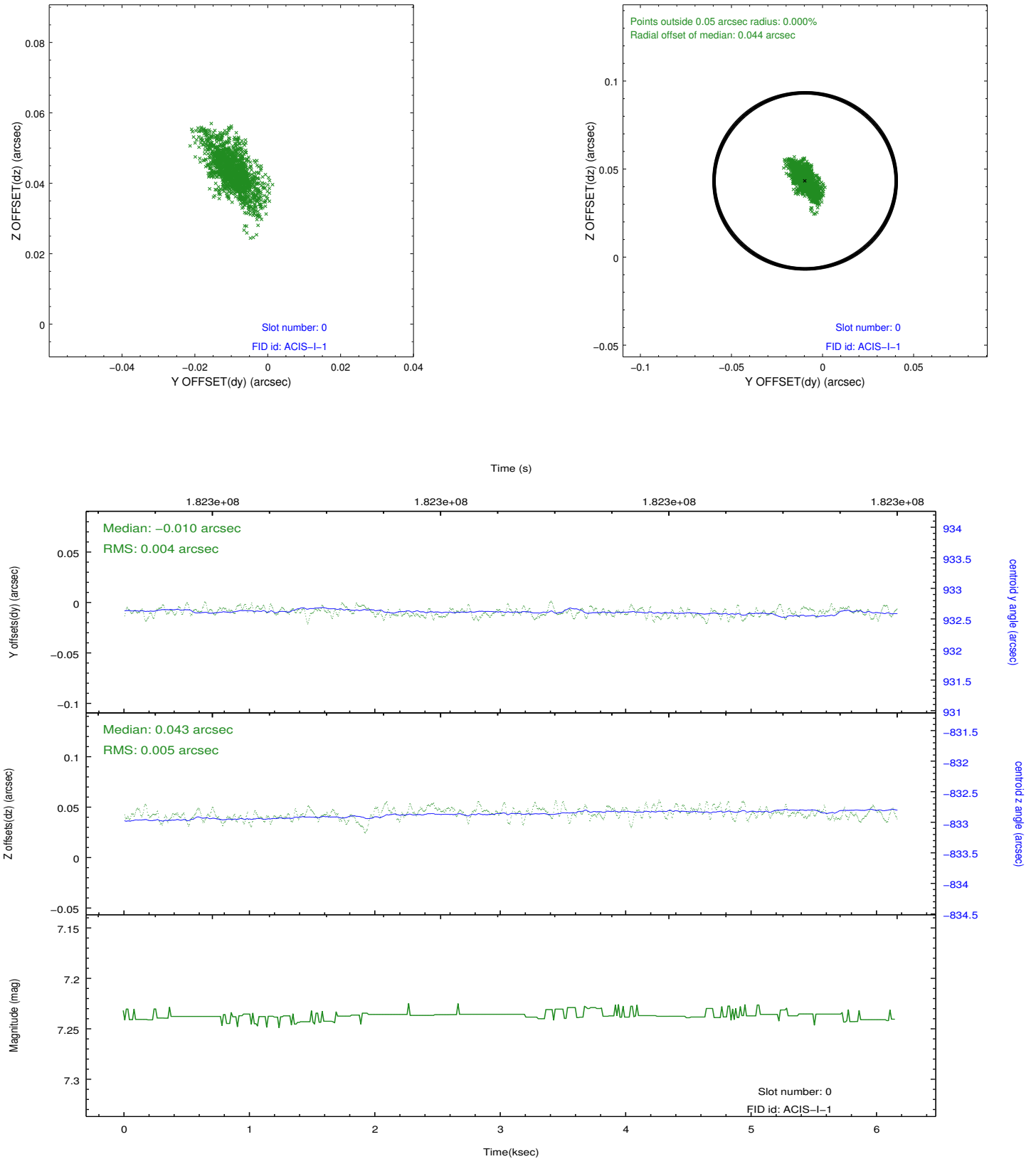


2.4.4 Slot 7

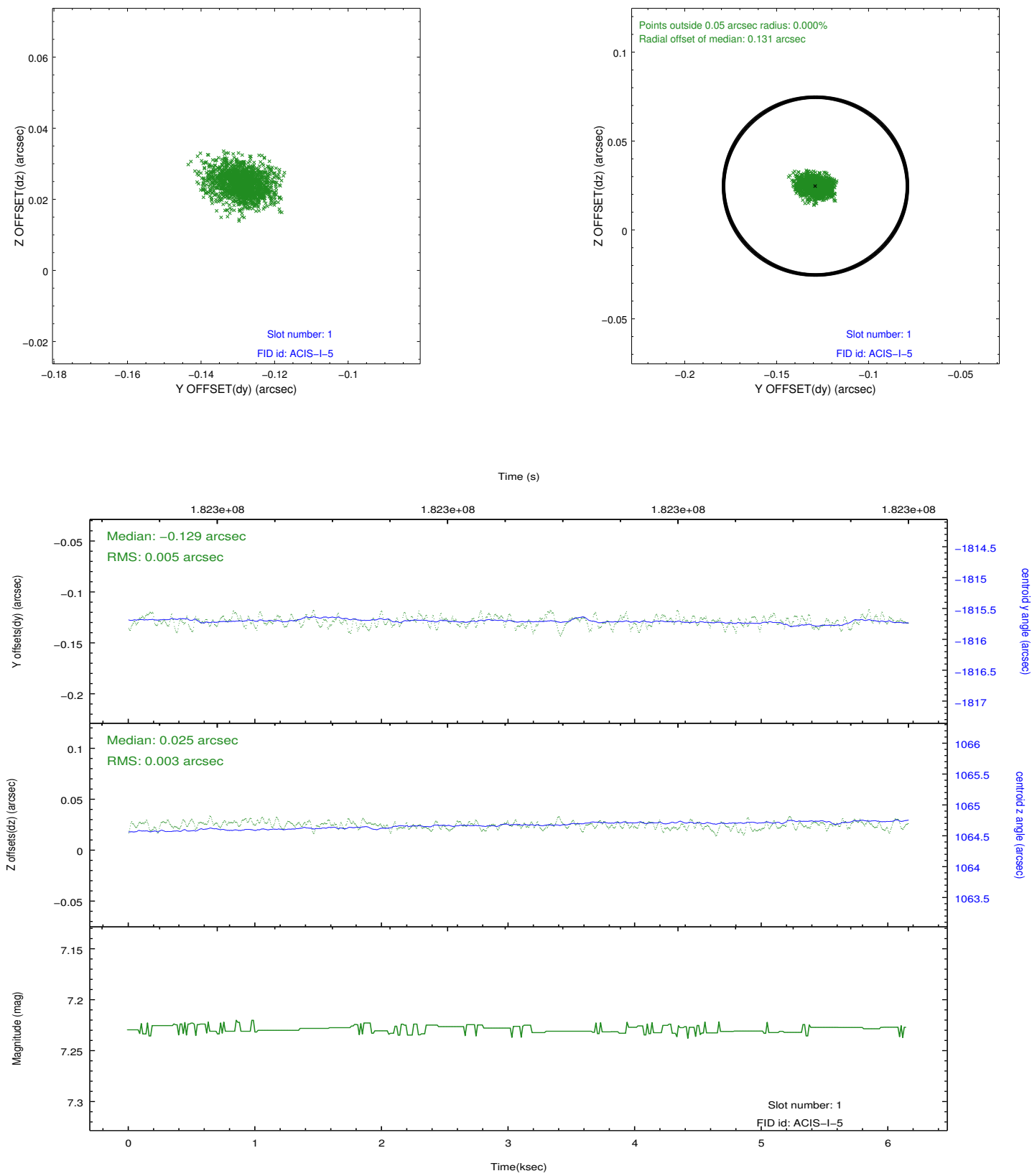


2.5 FID Slots

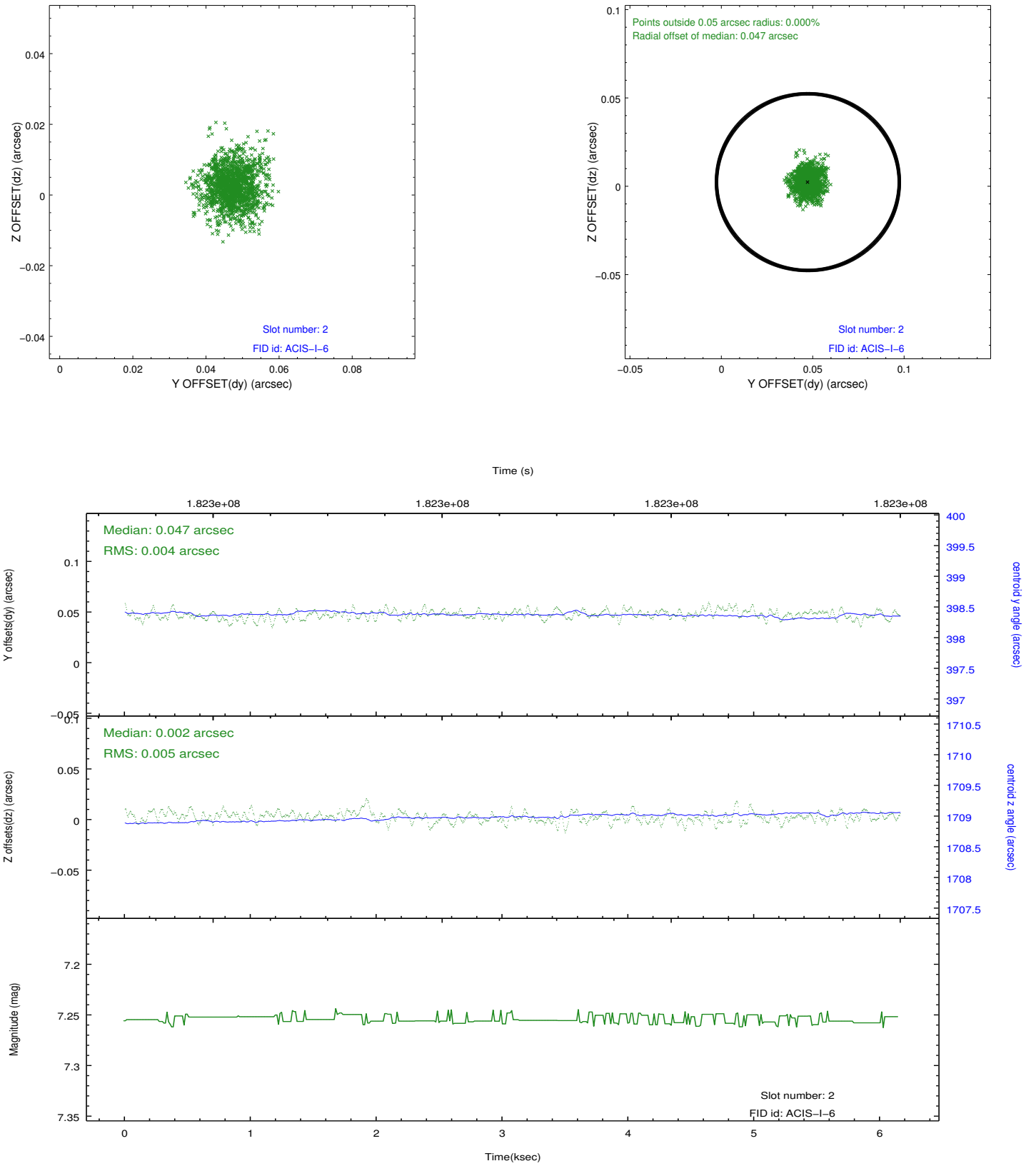
2.5.1 Slot 0



2.5.2 Slot 1



2.5.3 Slot 2



A Summary

A.1 Status

V&V Scientist	Beth Sundheim
V&V Date (YYYY-MM-DD)	2013.01.31
V&V Edition	1
V&V Disposition and Status	OK
V&V Charge Time	6.153

A.2 Comments

The guide star in slot 6 was removed from the aspect solution due to poor data quality. The aspect solution is improved by the removal of this star from the solution.