

# V&V Reference Report

## L2 ASCDS Version : 7.6.8

Observation 4178 - L2 Version 001  
Chandra X-Ray Center

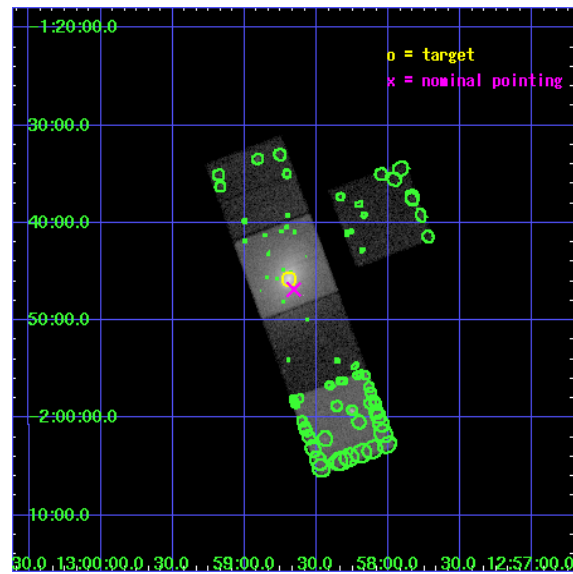
L2 Processing Date : Jul 12 2006

## Contents

<b>1</b>	<b>Front</b>	<b>2</b>
<b>2</b>	<b>OBI</b>	<b>3</b>
2.1	OBI . . . . .	3
2.1.1	Images . . . . .	3
2.1.2	Bias . . . . .	3
2.1.3	Parameters . . . . .	4
2.1.4	Events . . . . .	4
2.2	Compared Parameters . . . . .	5
2.3	Aspect . . . . .	6
2.4	Star Slots . . . . .	9
2.4.1	Slot 3 . . . . .	9
2.4.2	Slot 4 . . . . .	10
2.4.3	Slot 5 . . . . .	11
2.4.4	Slot 6 . . . . .	12
2.4.5	Slot 7 . . . . .	13
2.5	FID Slots . . . . .	14
2.5.1	Slot 0 . . . . .	14
2.5.2	Slot 1 . . . . .	15
2.5.3	Slot 2 . . . . .	16
<b>3</b>	<b>Point Sources</b>	<b>17</b>
<b>A</b>	<b>Summary</b>	<b>18</b>
A.1	Status . . . . .	18
A.2	Comments . . . . .	18

# 1 Front

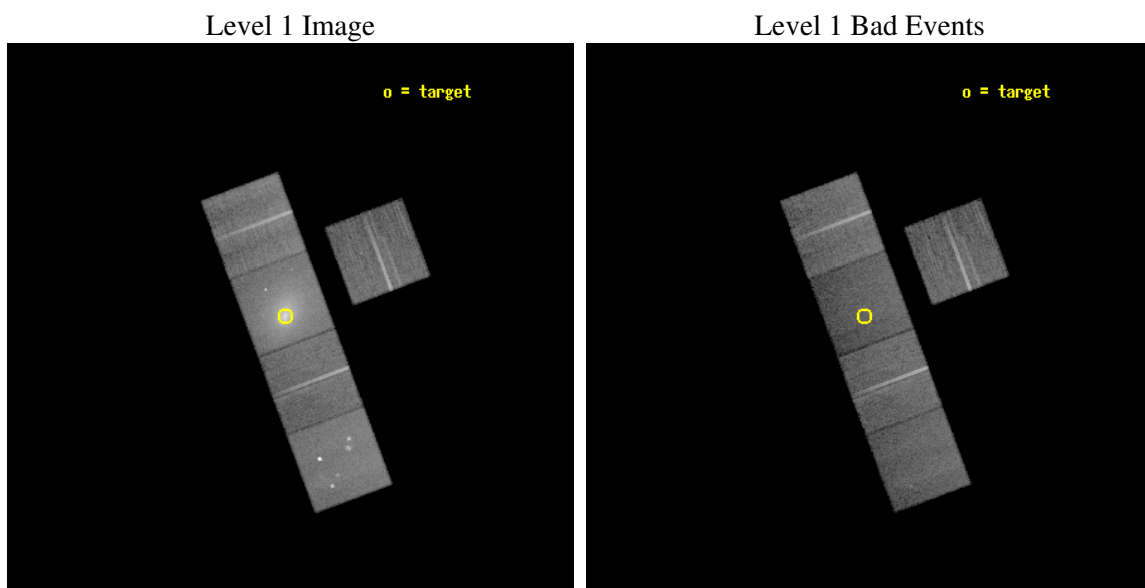
seq_num	800334
obs_id	4178
title	A SEARCH FOR FOSSILS OF FEEDBACK IN THREE RADIO- AND OPTICALLY-QUIET COOLING FLOWS
observer	Dr. Megan Donahue
object	ABELL 1650
dtcycle	0
cycle	P
ra_targ	194.673333
dec_targ	-1.761917
ra_nom	194.66450529604
dec_nom	-1.7806936109432
roll_nom	249.5964790989
revision	2
ontime	27620.999946892
livetime	27260.111248302
ontime3	27617.858986646
ontime5	27620.999946892
ontime6	27617.858976692
ontime7	27620.999946892
ontime8	27614.717986524
l2events	330944



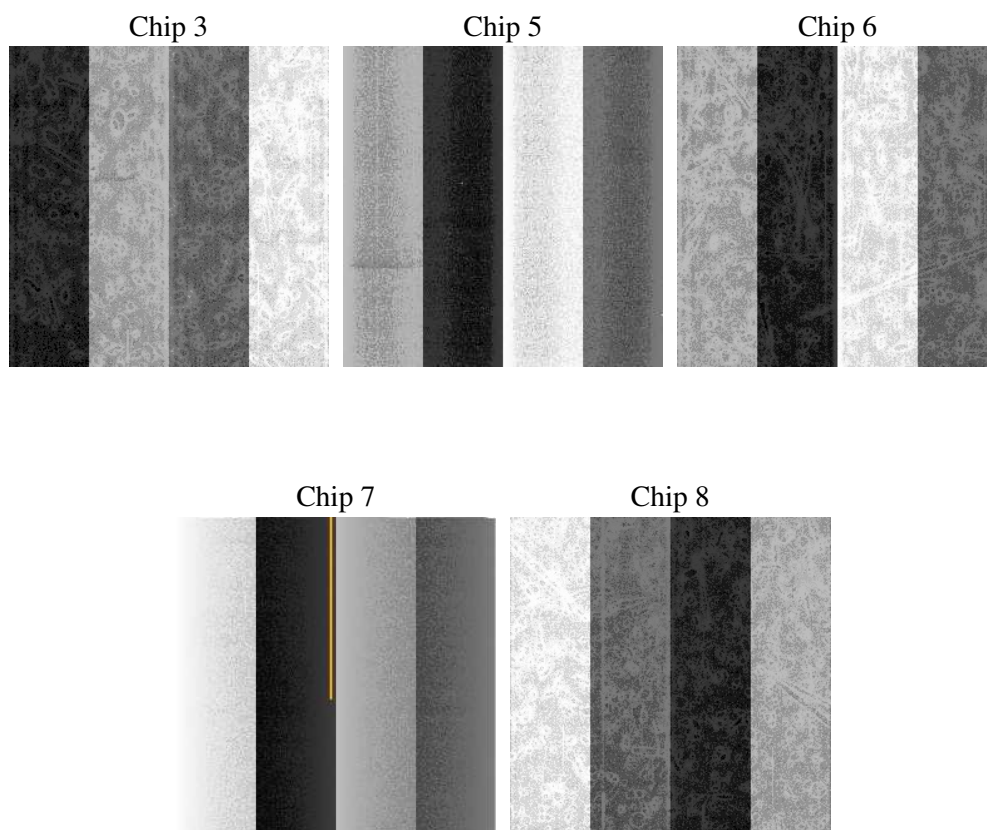
## 2 OBI

### 2.1 OBI

#### 2.1.1 Images



#### 2.1.2 Bias



### 2.1.3 Parameters

obi_num	0
ascdsver	7.6.8
caldsver	3.2.2
date	2006-07-12T22:29:28
revision	2

sched_exp_time	27488.031000
ontime	27678.511471599
ontime3	27675.370511353
ontime5	27678.511471599
ontime6	27675.370501399
ontime7	27678.511471599
ontime8	27672.229511231
l1events	975136

### 2.1.4 Events

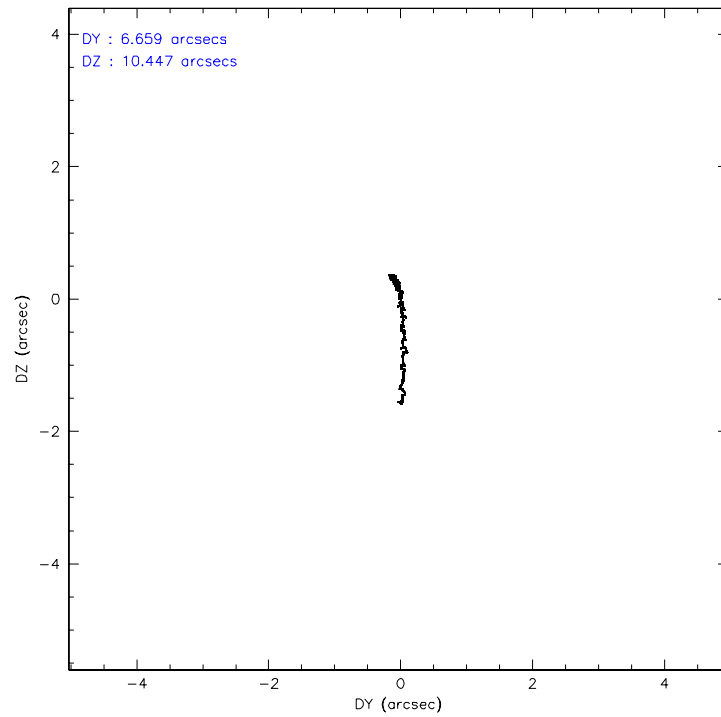
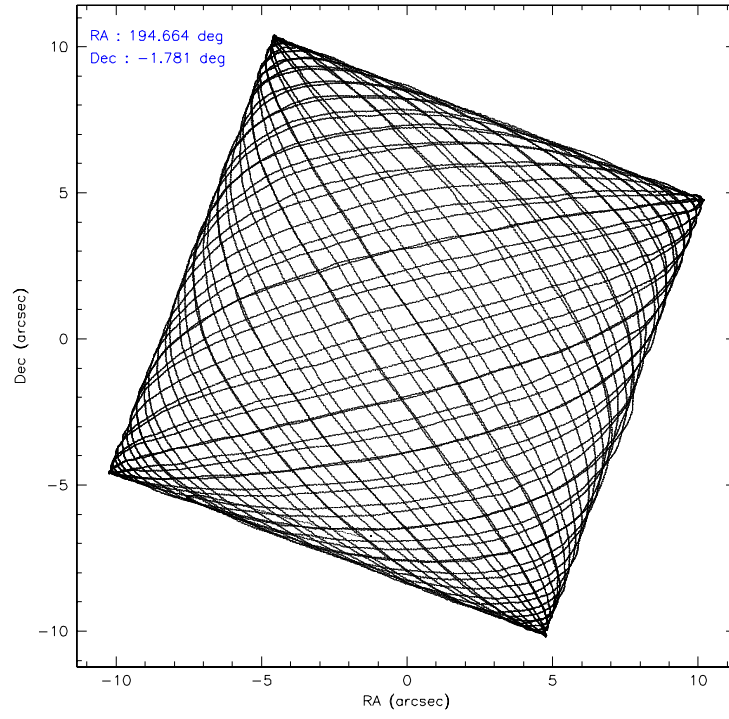
	ccd 3	ccd 5	ccd 6	ccd 7	ccd 8
level 1 events	143272	201958	152929	288371	188606
rejected events	128896	100489	130936	92838	144945
rejected %	89%	49%	85%	32%	76%

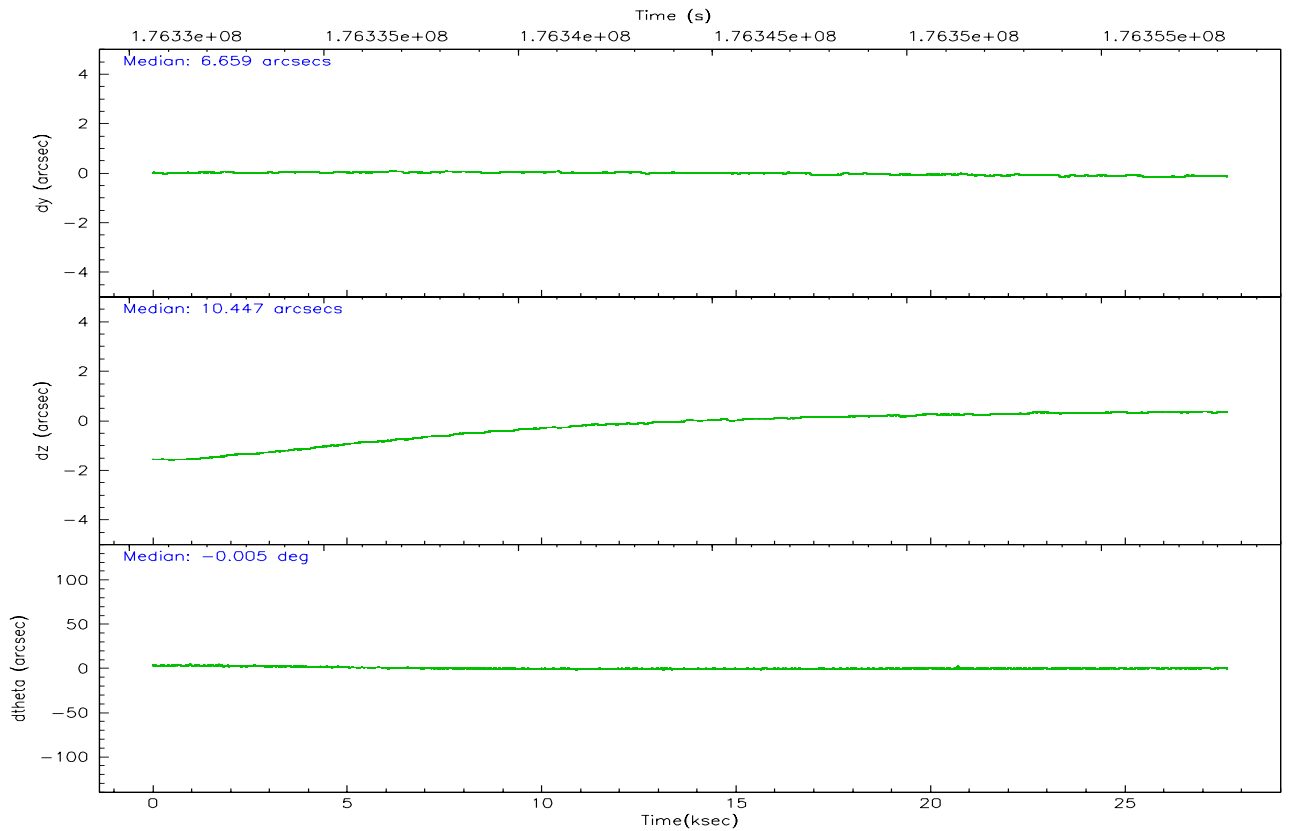
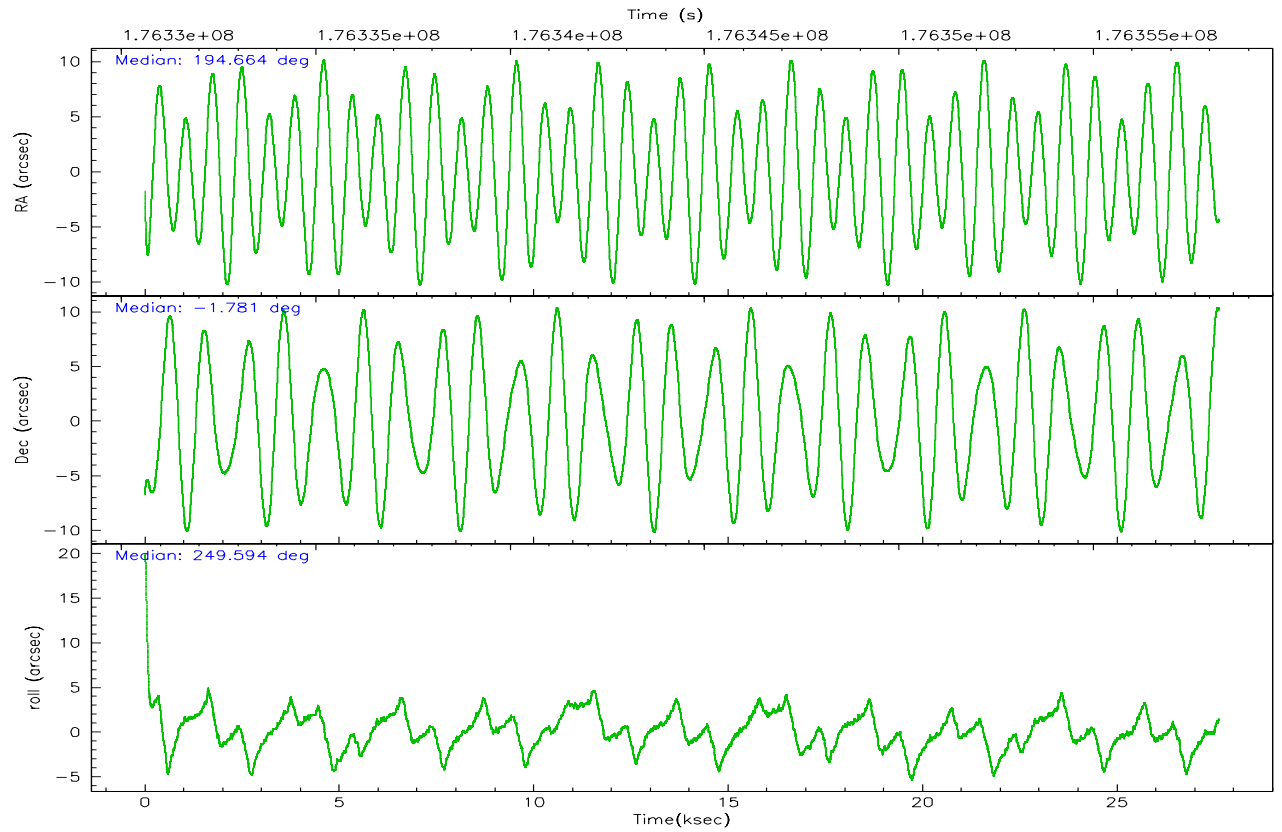
	ccd 3	ccd 5	ccd 6	ccd 7	ccd 8
grade 0 events	5609	16656	11091	43295	14924
	3%	8%	7%	15%	7%
grade 1 events	75	250	77	132	139
	0%	0%	0%	0%	0%
grade 2 events	2956	28904	3925	52099	8998
	2%	14%	2%	18%	4%
grade 3 events	1620	2629	1867	18198	4708
	1%	1%	1%	6%	2%
grade 4 events	1627	2430	1811	17656	4483
	1%	1%	1%	6%	2%
grade 5 events	5414	10376	5725	12978	8106
	3%	5%	3%	4%	4%
grade 6 events	2597	51112	3337	64683	10657
	1%	25%	2%	22%	5%
grade 7 events	123374	89601	125096	79330	136591
	86%	44%	81%	27%	72%

## 2.2 Compared Parameters

Parameter	Planned	Actual	Parameter	Planned	Actual
Instrument	ACIS	ACIS	Obspar format version number	6	6
Detector	ACIS-35678	ACIS-35678	Obspar file type	PREDICTED	ACTUAL
Grating	NONE	NONE	Obspar update status	NONE	UPDATED
Data mode	VFAINT	VFAINT	On-chip summing requested	N	N
Observation mode	POINTING	POINTING	Subarray requested	NONE	NONE
Pointing RA	194.659595	194.6645052960391	Alternating exposures requested	N	N
Pointing Dec	-1.753914	-1.780693610943179	Primary exposure time	0.000000	3.1
Pointing Roll	249.439695	249.5964790988955			
SIM focus pos (mm)	-0.684267	-0.6828225247311905			
SIM defocus (mm)	0	0.001444936568705701			
SIM translation stage pos (mm)	-190.132523	-190.1400660498719			
SIM translation stage offset (mm)	0	0.00754346686406393			
Observation start time	176330752.184000	176329619.3515			
Observation start date	2003-08-03T20:44:48	2003-08-03T20:26:59			
Observation end time	176358240.184000	176358555.10274			
Observation end date	2003-08-04T04:22:56	2003-08-04T04:29:15			
Read mode	TIMED	TIMED			

## 2.3 Aspect





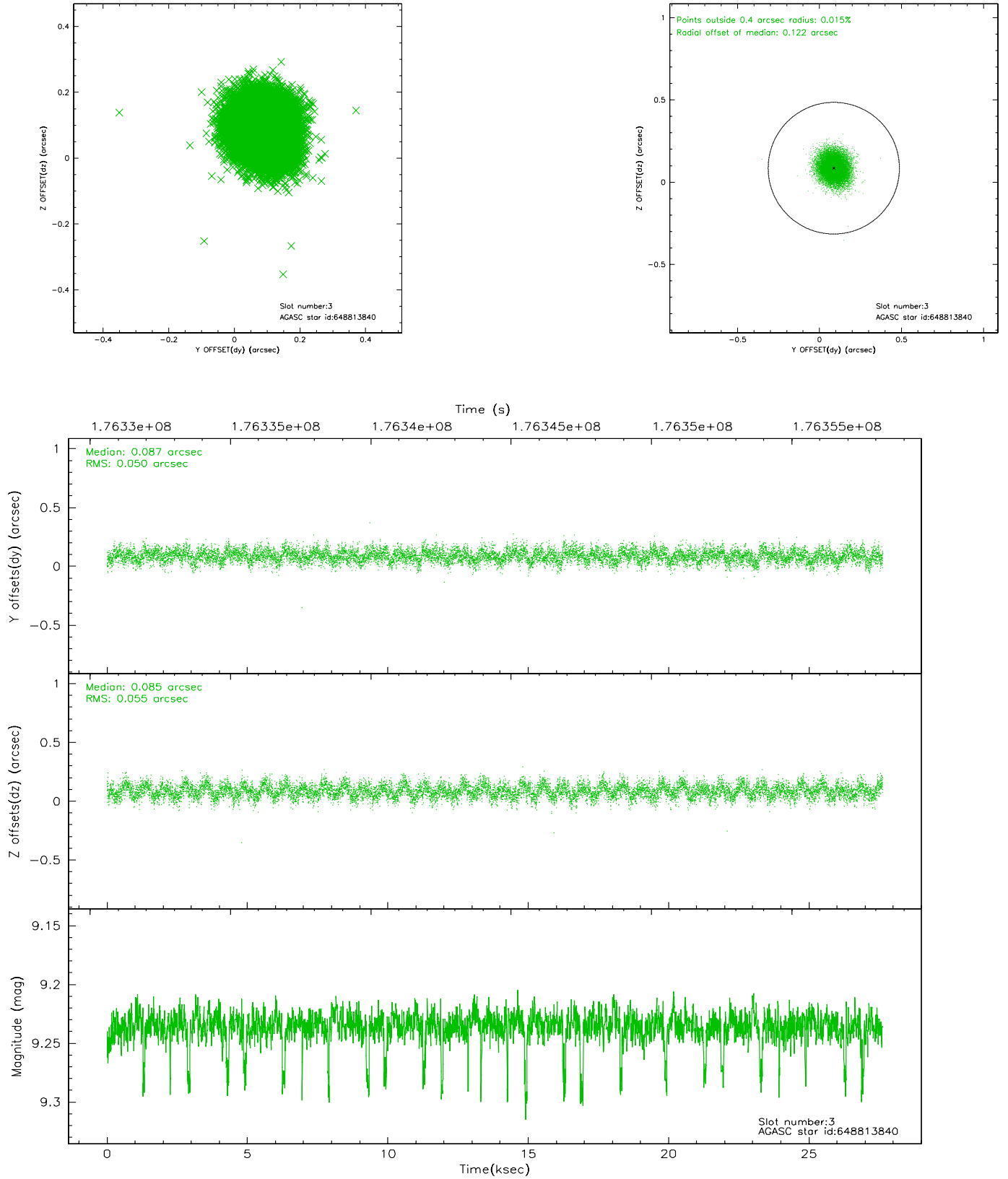
### Slot Statistics

slot	status	id	mag	n_pts	med_dy	med_dz	dr1	dr2	ra	dec	mean_y	mean_z
0	FID	ACIS-S-2	7.10	6738	-0.045	0.005	0.011	0.027	0.000000	0.000000	-759.40	-1731.45
1	FID	ACIS-S-4	7.20	6738	0.024	0.020	0.007	0.012	0.000000	0.000000	2153.88	176.99
2	FID	ACIS-S-5	7.23	6736	-0.011	-0.017	0.012	0.029	0.000000	0.000000	-1812.12	170.68
3	GUIDE	648813840	9.24	13419	0.087	0.085	0.079	0.126	194.717621	-1.945504	573.00	438.34
4	GUIDE	648813864	8.83	13469	-0.155	-0.128	0.081	0.125	194.235605	-1.103465	-1656.15	-2251.12
5	GUIDE	648815736	9.94	13462	0.315	-0.009	0.108	0.172	194.100949	-2.130858	1977.22	-1404.89
6	GUIDE	648813664	8.35	13477	-0.149	-0.083	0.058	0.095	194.615044	-1.051809	-2309.99	-1037.95
7	GUIDE	648814560	8.77	13471	-0.097	0.137	0.062	0.100	194.841018	-1.130344	-2331.17	-176.74

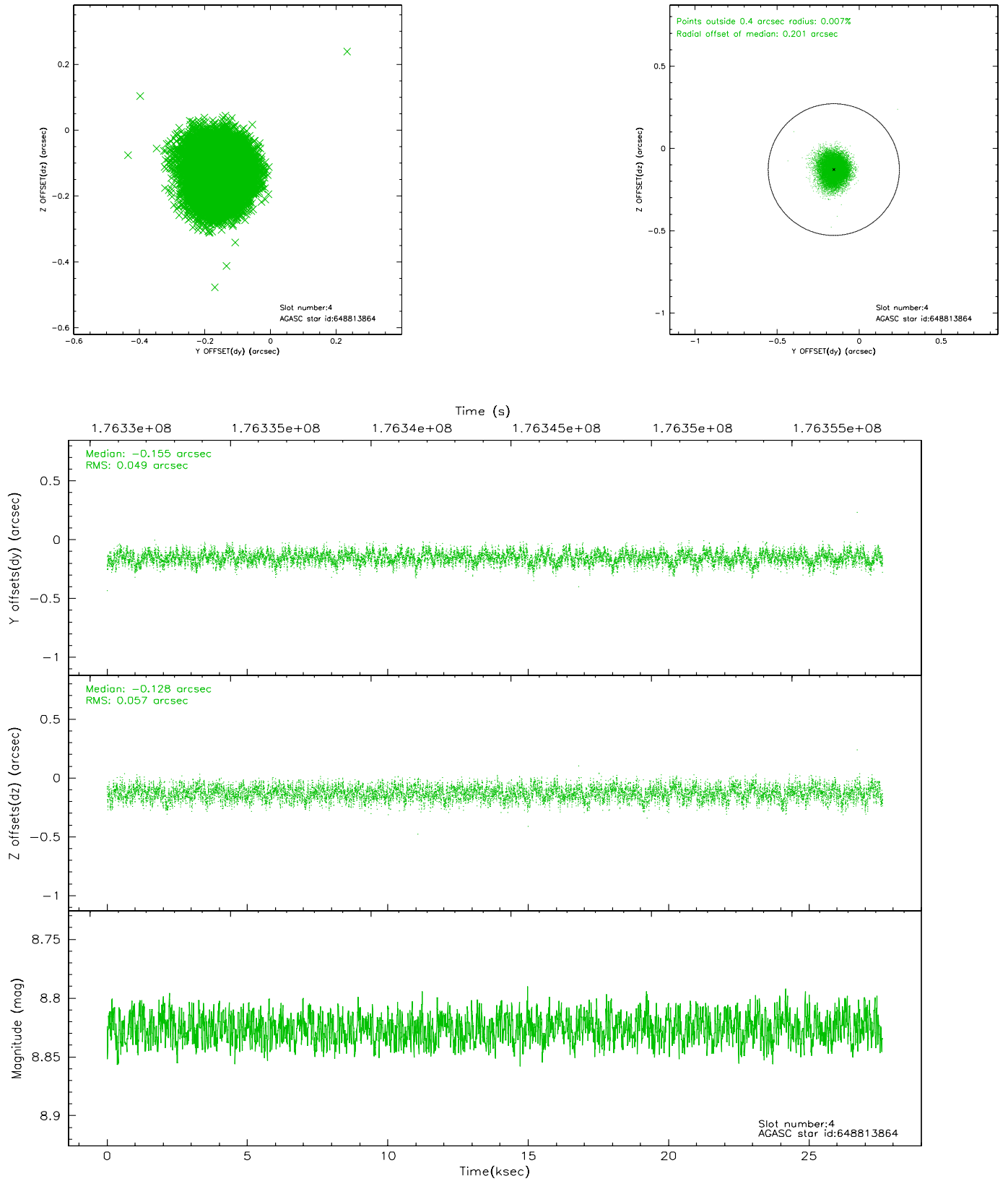


## 2.4 Star Slots

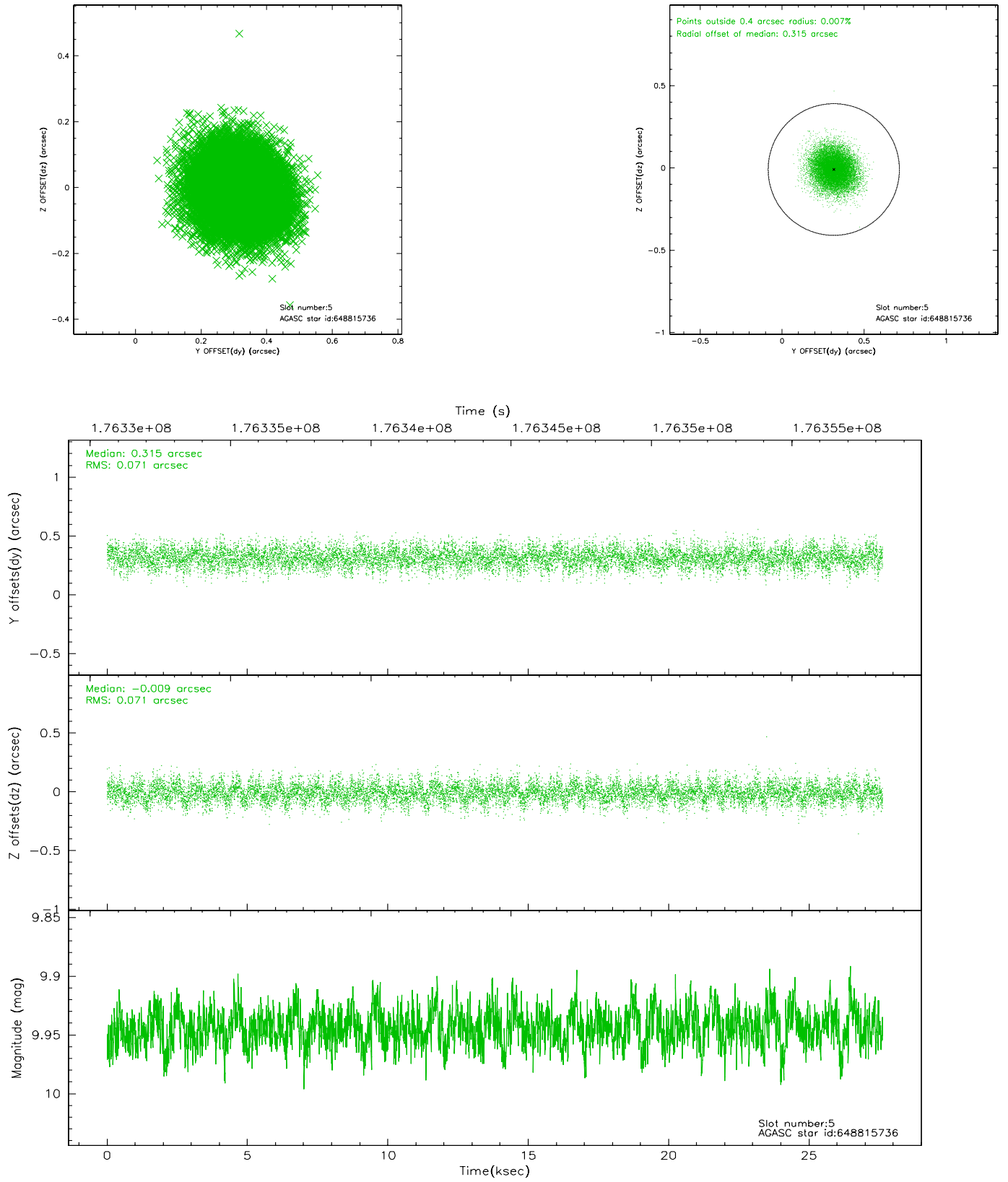
### 2.4.1 Slot 3



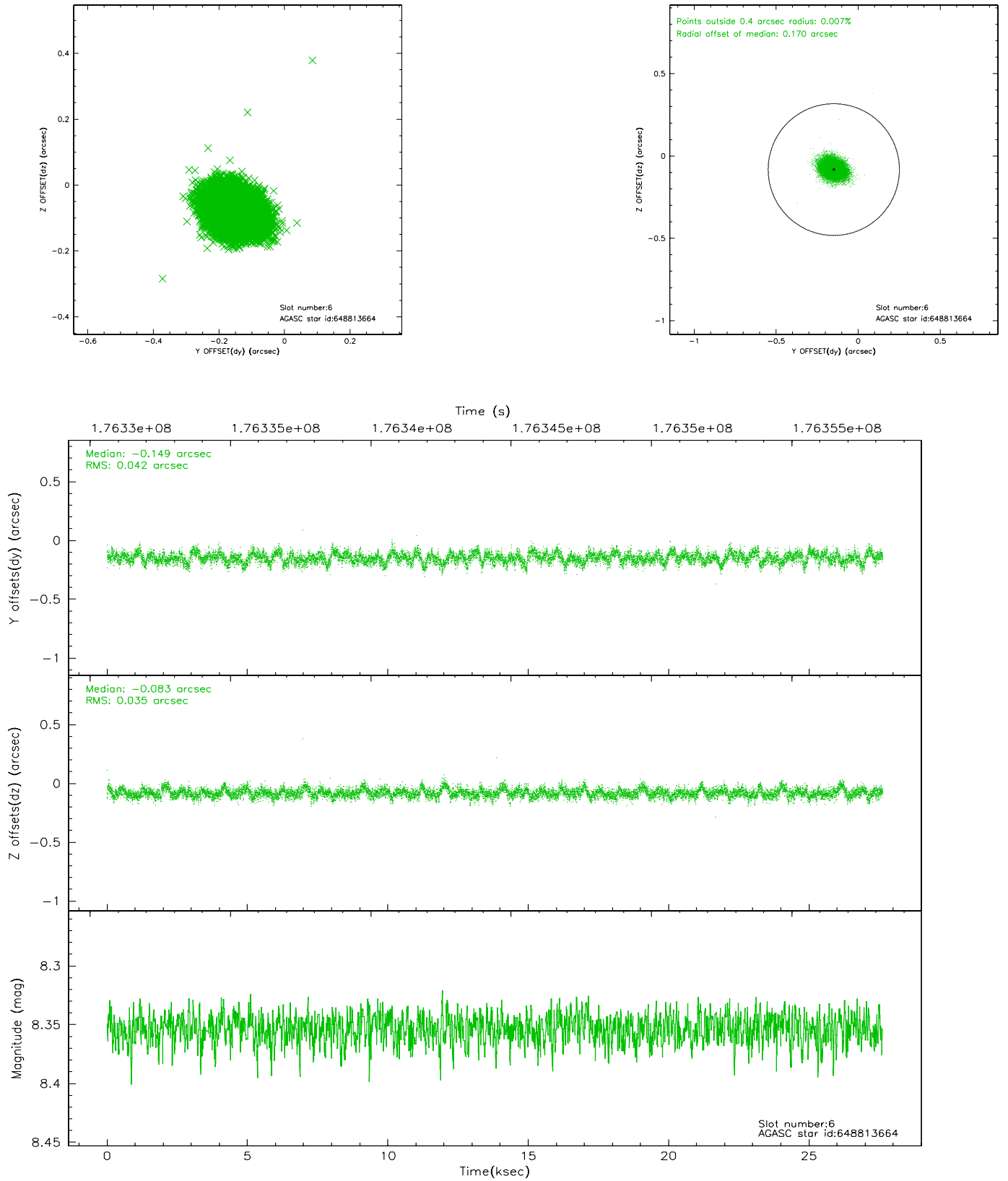
## 2.4.2 Slot 4



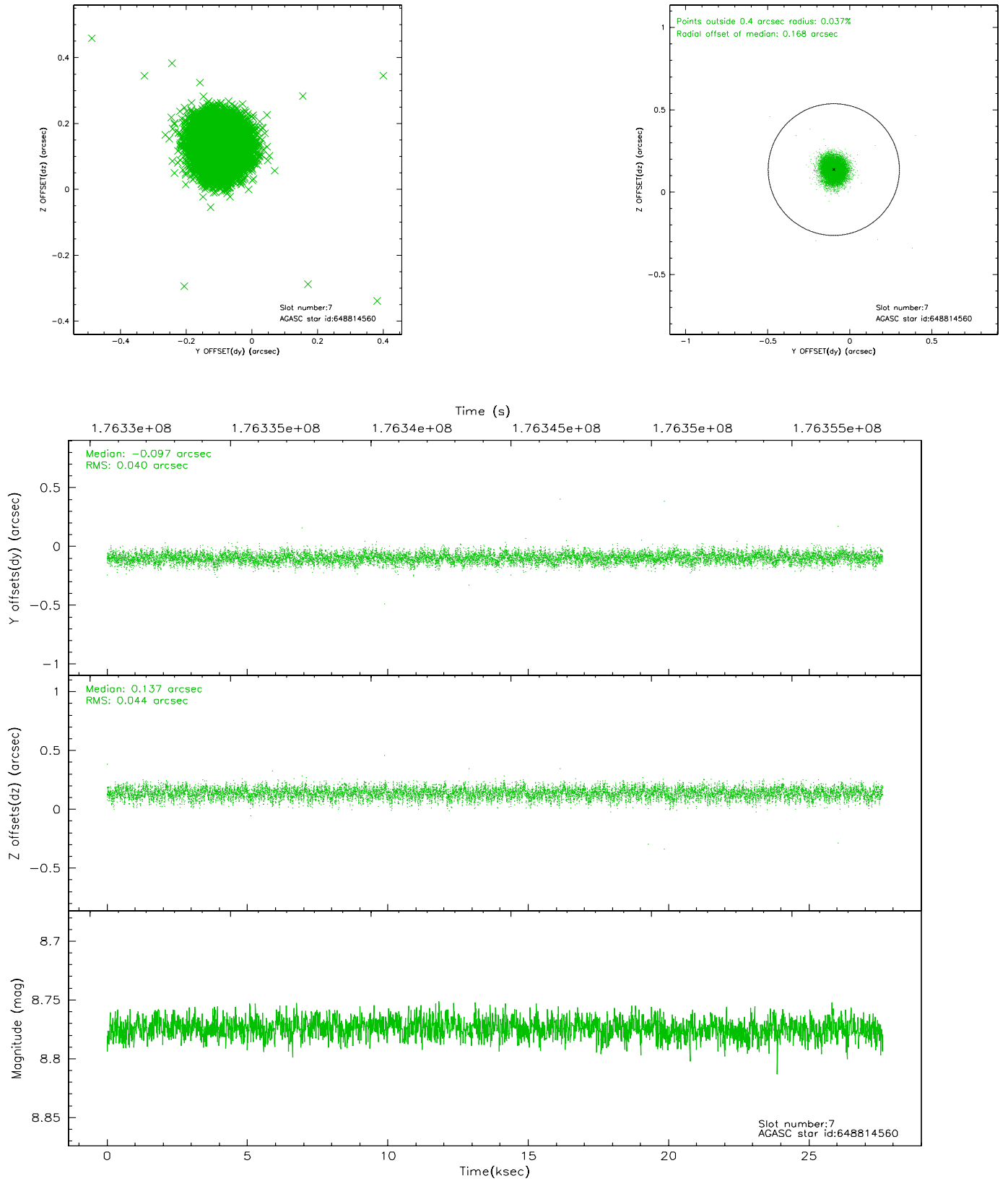
### 2.4.3 Slot 5



## 2.4.4 Slot 6

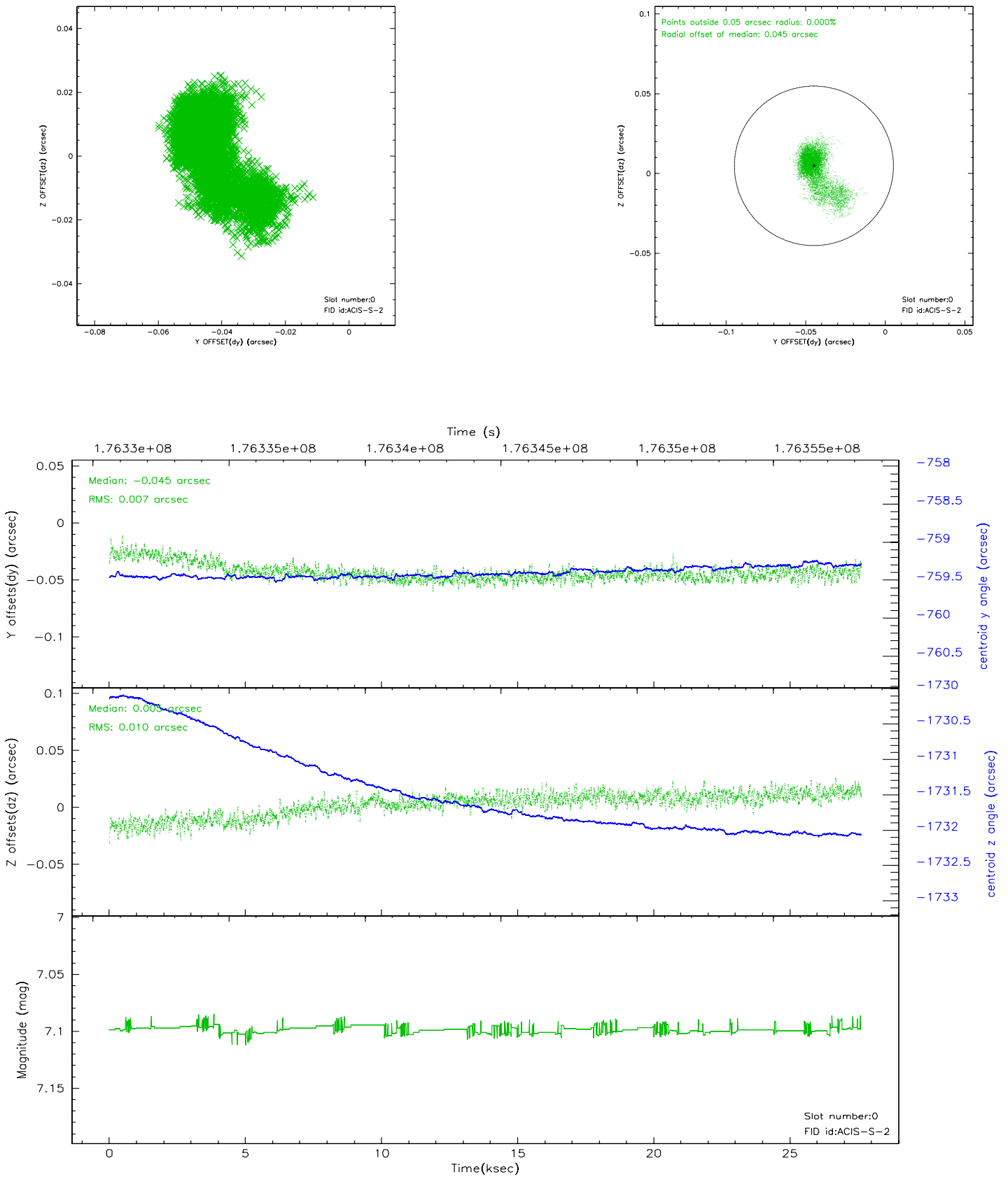


## 2.4.5 Slot 7

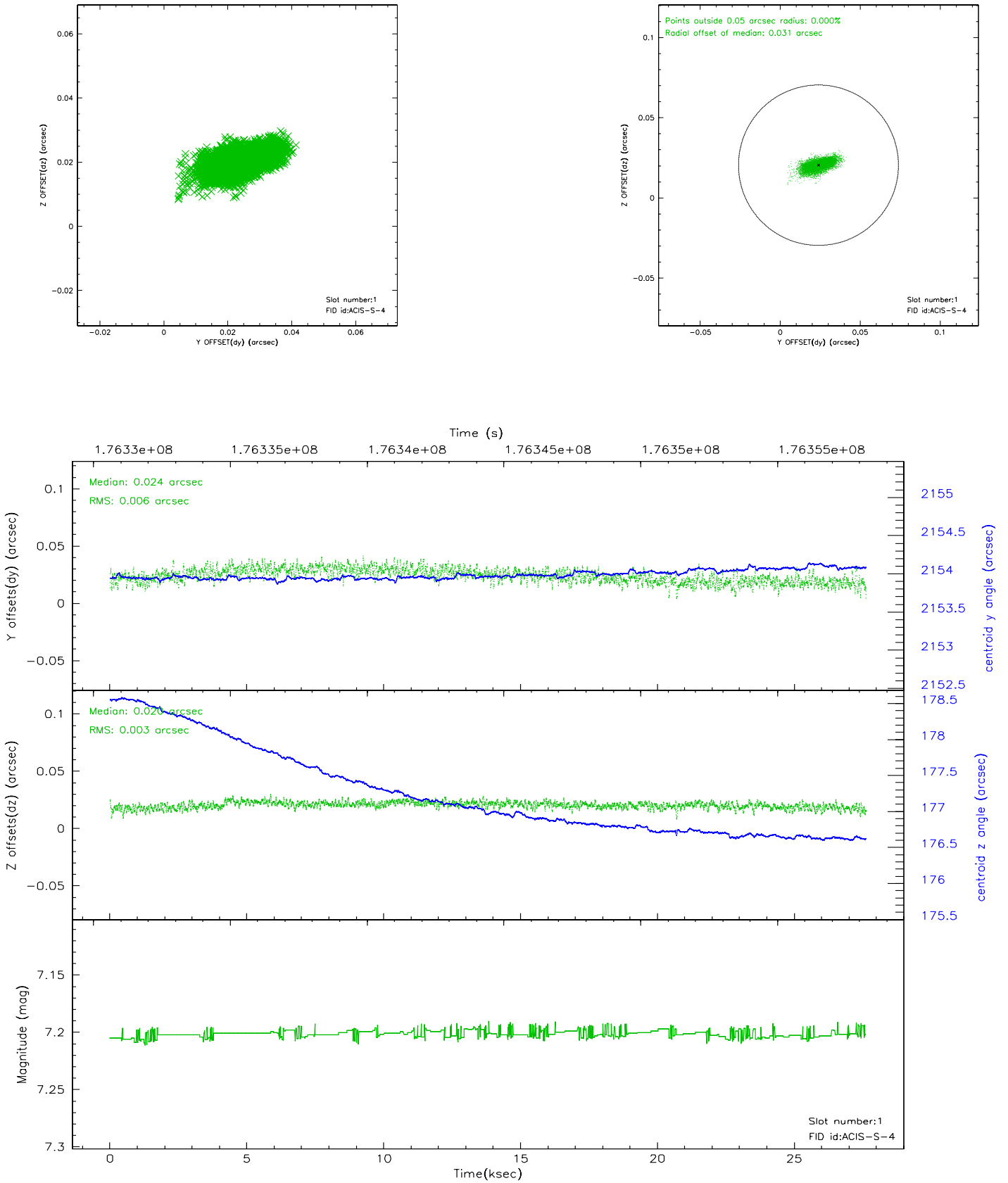


## 2.5 FID Slots

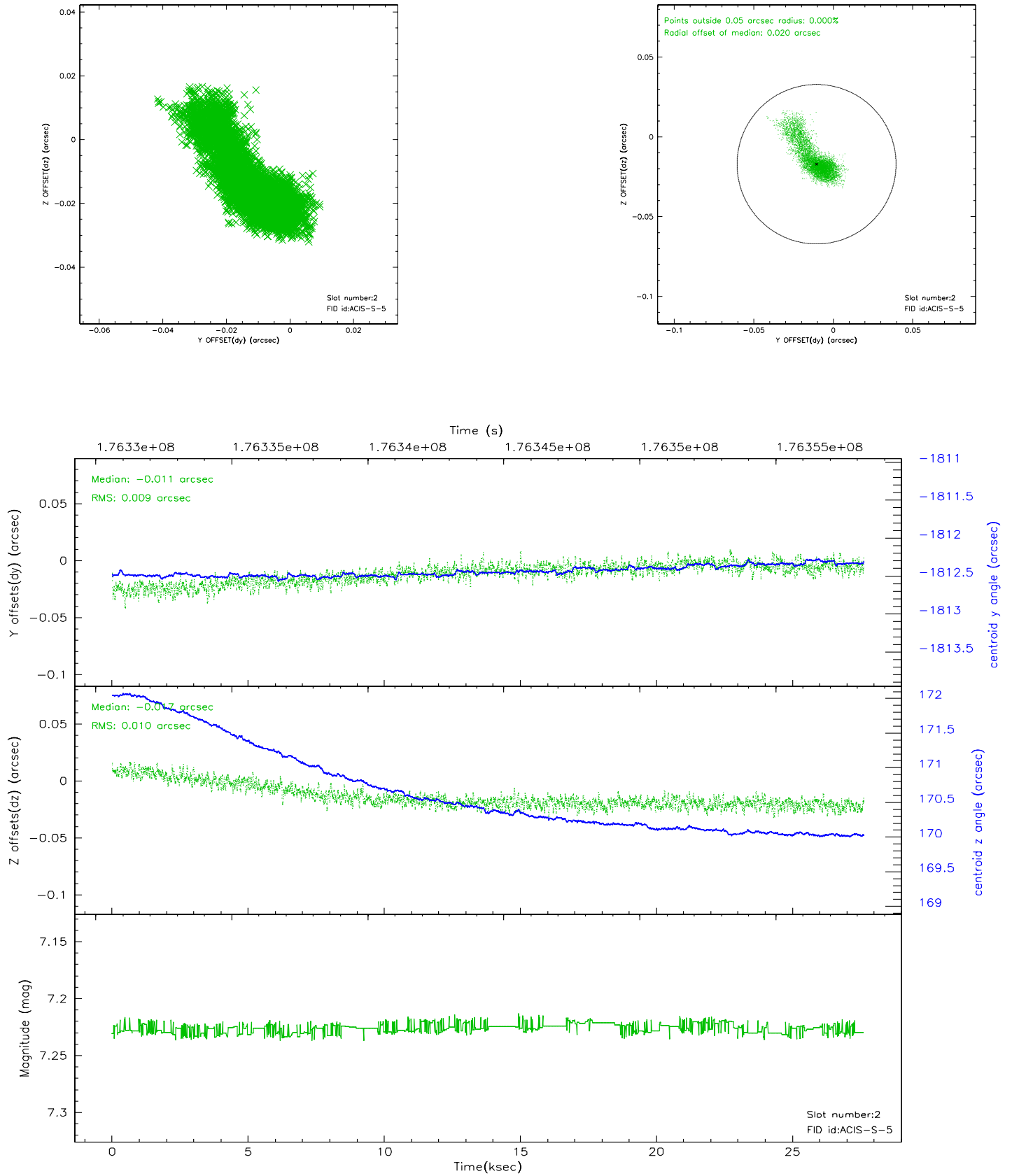
### 2.5.1 Slot 0



## 2.5.2 Slot 1

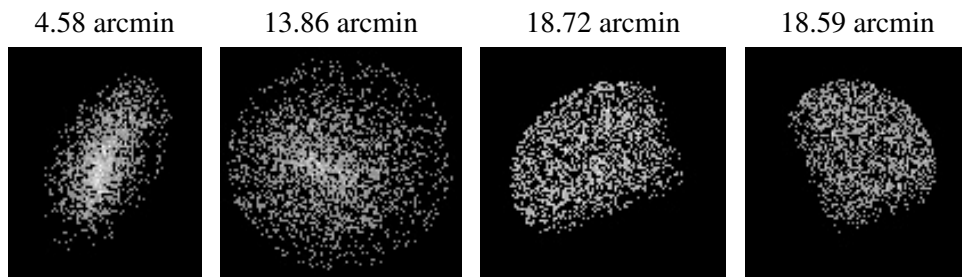


### 2.5.3 Slot 2





### 3 Point Sources



## A Summary

### A.1 Status

V&V Scientist	Jen Lauer
V&V Date (YYYY-MM-DD)	2006.07.13
V&V Edition	1
V&V Disposition and Status	OK
V&V Charge Time	27.62

### A.2 Comments