

V&V Reference Report

L2 ASCDS Version : 7.6.8

Observation 4158 - L2 Version 001
Chandra X-Ray Center

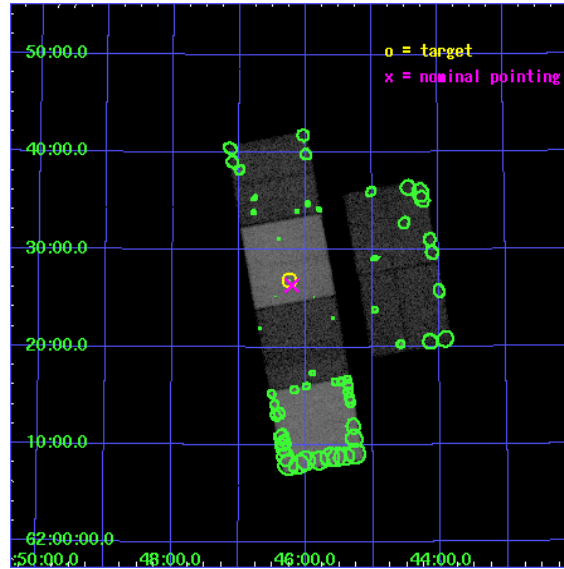
L2 Processing Date : Jul 6 2006

Contents

1	Front	2
2	OBI	3
2.1	OBI	3
2.1.1	Images	3
2.1.2	Bias	3
2.1.3	Parameters	4
2.1.4	Events	4
2.2	Compared Parameters	5
2.3	Aspect	6
2.4	Star Slots	9
2.4.1	Slot 3	9
2.4.2	Slot 4	10
2.4.3	Slot 5	11
2.4.4	Slot 6	12
2.4.5	Slot 7	13
2.5	FID Slots	14
2.5.1	Slot 0	14
2.5.2	Slot 1	15
2.5.3	Slot 2	16
3	Point Sources	17
A	Summary	18
A.1	Status	18
A.2	Comments	18

1 Front

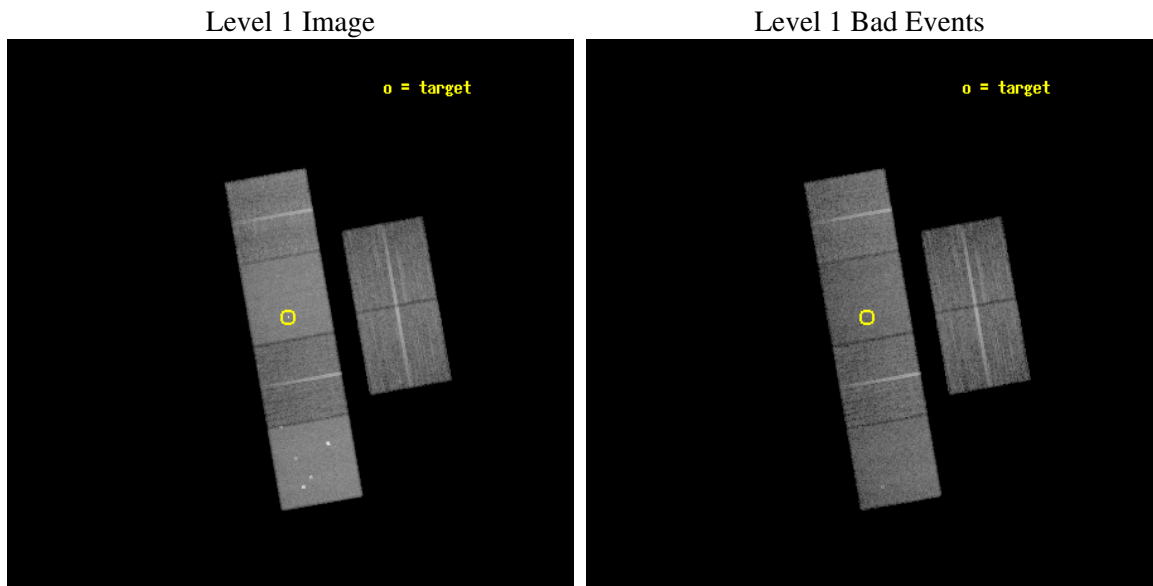
seq_num	700837
obs_id	4158
title	AGN JETS AT HIGH REDSHIFTS: INVERSE COMPTON SCATTERING OF THE CMB?
observer	Peter Strub
object	7C 1745+6227
dtcycle	0
cycle	P
ra_targ	266.55875
dec_targ	62.448556
ra_nom	266.55159010115
dec_nom	62.439488872995
roll_nom	259.94124463994
revision	2
ontime	18547.199930906
livetime	18312.344117598
ontime2	18547.199930906
ontime3	18547.199930906
ontime5	18547.199930906
ontime6	18547.199930906
ontime7	18547.199930906
ontime8	18543.958960652
l2events	234189



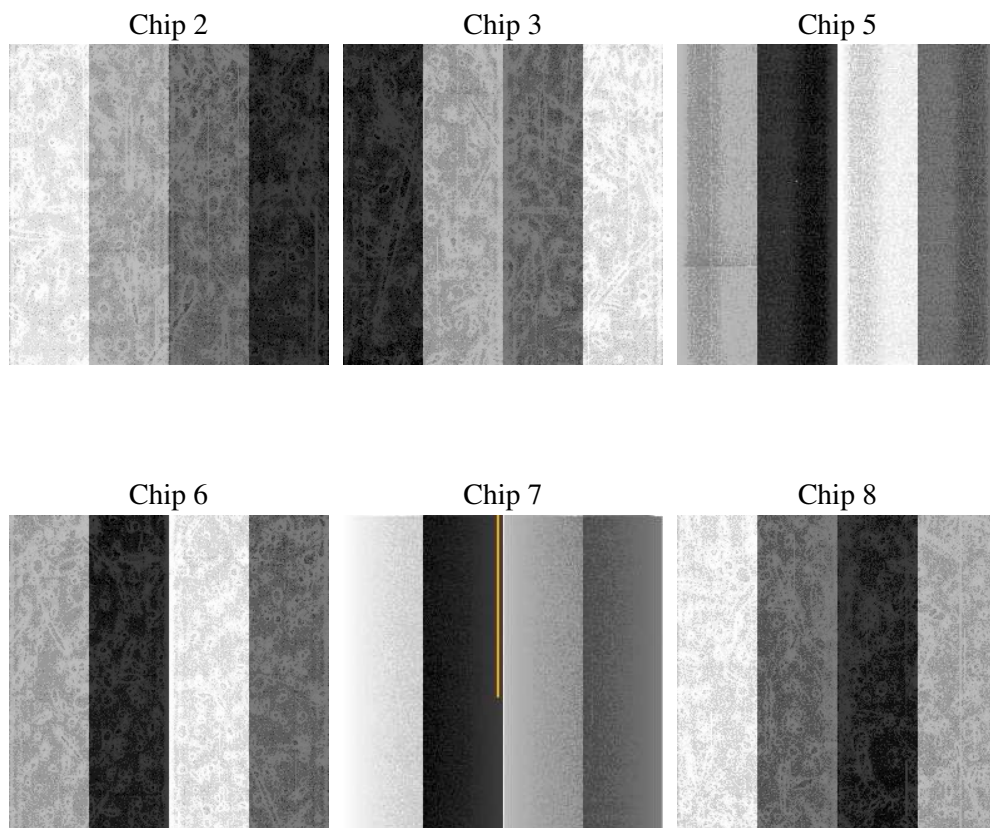
2 OBI

2.1 OBI

2.1.1 Images



2.1.2 Bias



2.1.3 Parameters

obi_num	0
ascdsver	7.6.8
caldsver	3.2.2
date	2006-07-06T04:10:12
revision	2

sched_exp_time	18788.000000
ontime	18551.488694727
ontime2	18551.488674819
ontime3	18551.488704741
ontime5	18551.488704741
ontime6	18551.488704741
ontime7	18551.488694727
ontime8	18548.24761489
l1events	879368

2.1.4 Events

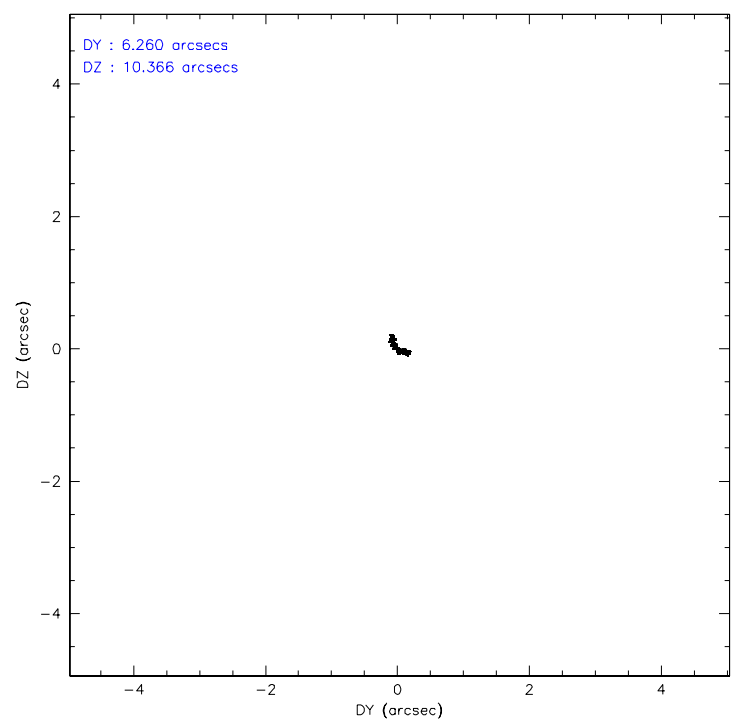
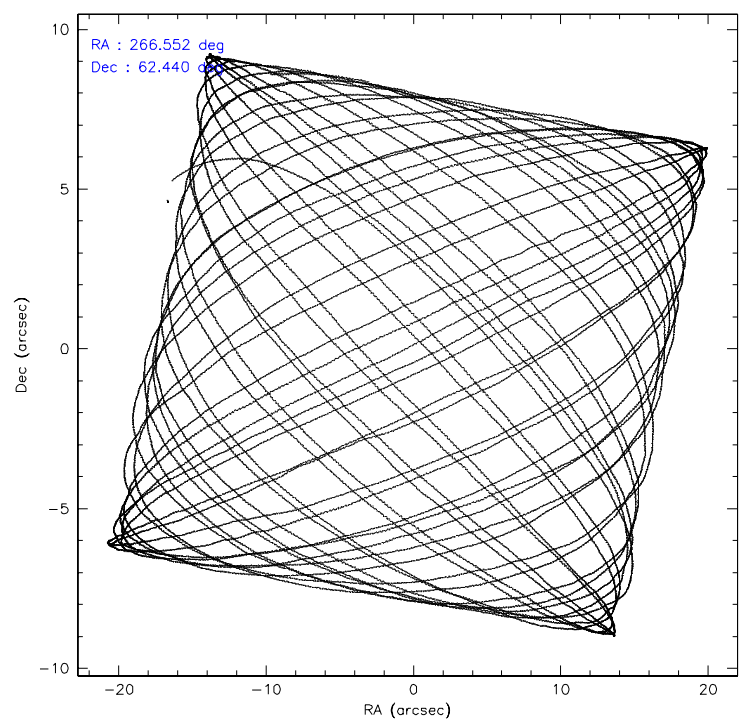
	ccd 2	ccd 3	ccd 5	ccd 6	ccd 7	ccd 8
level 1 events	119272	113171	198351	117073	180333	151168
rejected events	102469	96934	98470	98610	99249	116283
rejected %	85%	85%	49%	84%	55%	76%

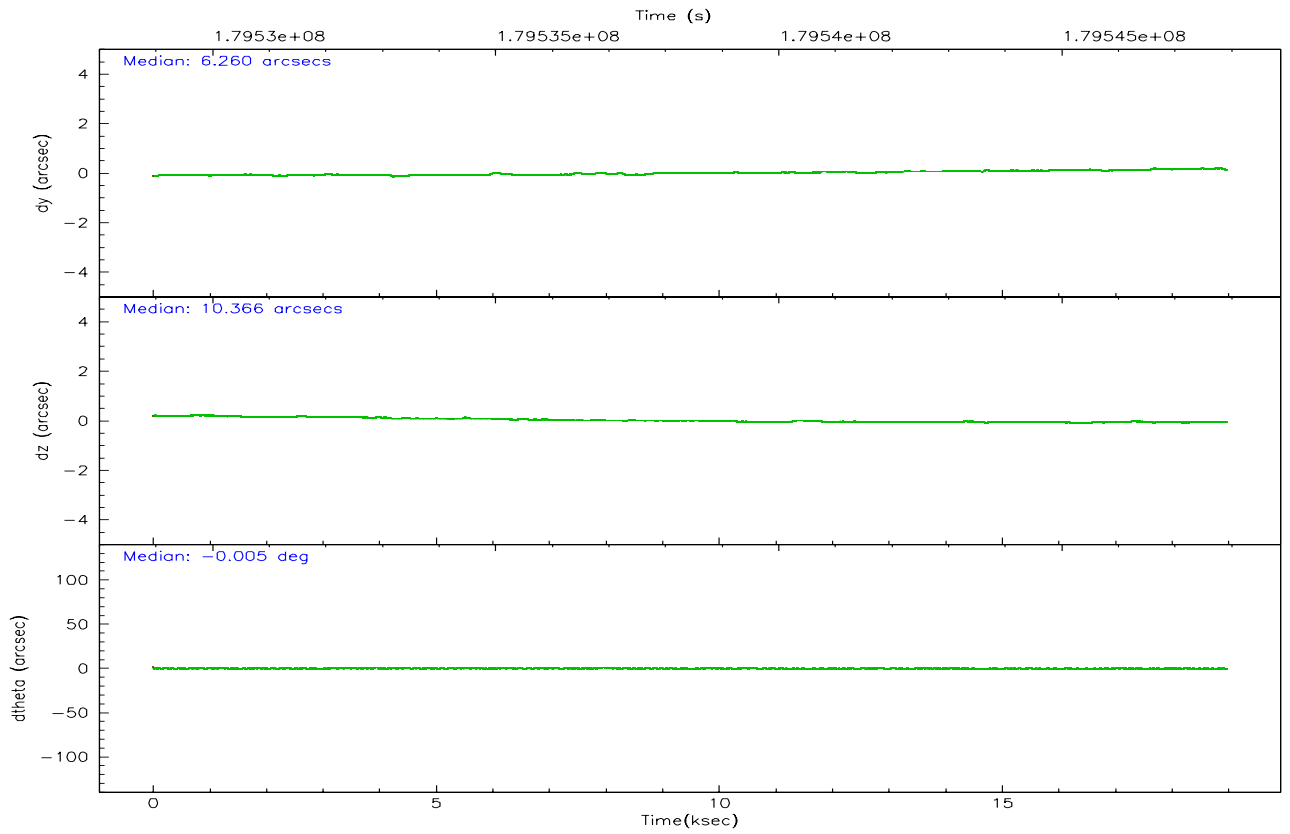
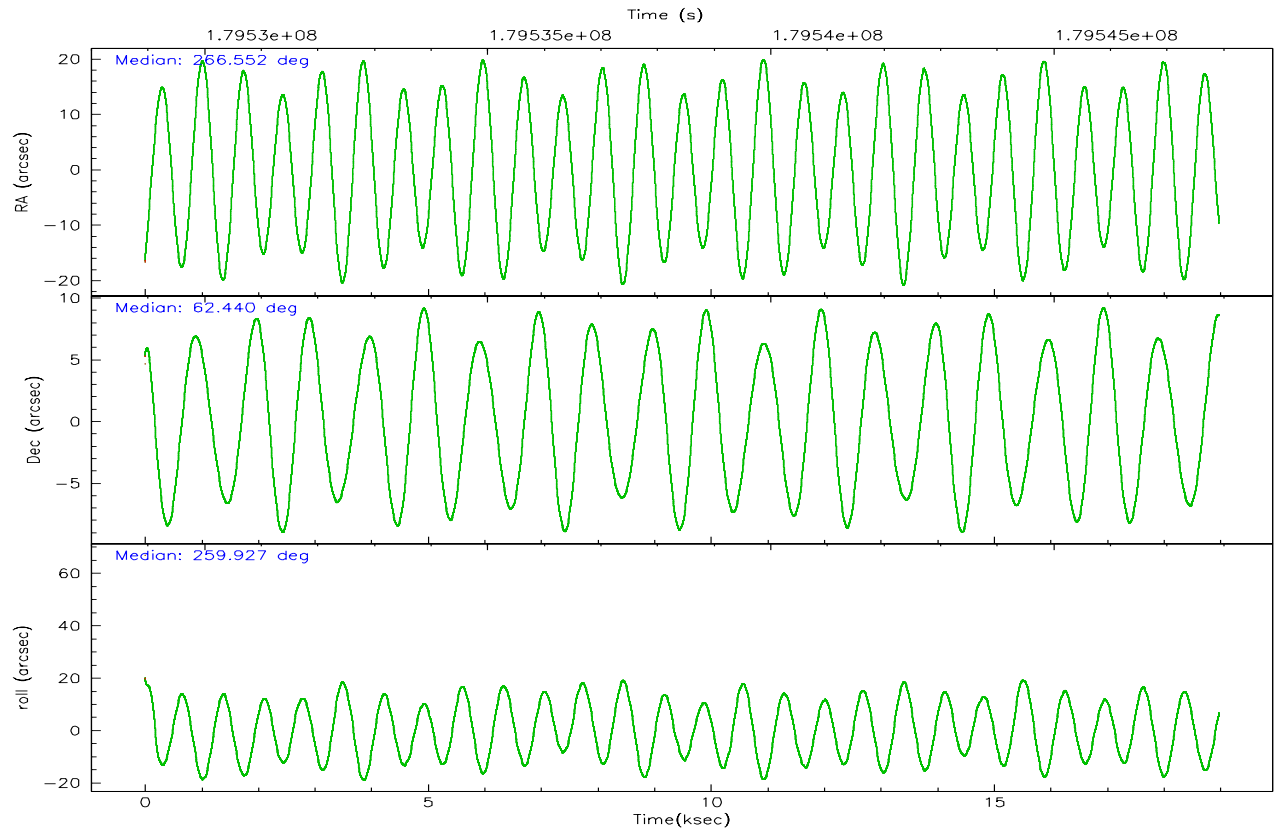
	ccd 2	ccd 3	ccd 5	ccd 6	ccd 7	ccd 8
grade 0 events	8480	8117	12701	9146	5926	13418
	7%	7%	6%	7%	3%	8%
grade 1 events	79	84	381	49	95	118
	0%	0%	0%	0%	0%	0%
grade 2 events	3181	3019	29669	3621	18904	7306
	2%	2%	14%	3%	10%	4%
grade 3 events	1366	1352	2669	1349	4471	3149
	1%	1%	1%	1%	2%	2%
grade 4 events	1367	1396	2494	1448	4376	3003
	1%	1%	1%	1%	2%	1%
grade 5 events	4534	4907	8410	5075	10675	6891
	3%	4%	4%	4%	5%	4%
grade 6 events	2411	2360	52378	2902	47425	8010
	2%	2%	26%	2%	26%	5%
grade 7 events	97854	91936	89649	93483	88461	109273
	82%	81%	45%	79%	49%	72%

2.2 Compared Parameters

Parameter	Planned	Actual	Parameter	Planned	Actual
Instrument	ACIS	ACIS	Obspar format version number	6	6
Detector	ACIS-235678	ACIS-235678	Obspar file type	PREDICTED	ACTUAL
Grating	NONE	NONE	Obspar update status	NONE	UPDATED
Data mode	FAINT	FAINT	On-chip summing requested	N	N
Observation mode	POINTING	POINTING	Subarray requested	NONE	NONE
Pointing RA	266.530702	266.5515901011495	Alternating exposures requested	N	N
Pointing Dec	62.464951	62.4394888729945	Primary exposure time	0.000000	3.2
Pointing Roll	259.803141	259.9412446399367			
SIM focus pos (mm)	-0.684267	-0.6828225247311905			
SIM defocus (mm)	0	0.001444936568705701			
SIM translation stage pos (mm)	-190.132523	-190.1400660498719			
SIM translation stage offset (mm)	0	0.00754346686406393			
Observation start time	179529129.184000	179528495.35084			
Observation start date	2003-09-09T21:11:05	2003-09-09T21:01:35			
Observation end time	179547917.184000	179548686.82671			
Observation end date	2003-09-10T02:24:13	2003-09-10T02:38:06			
Read mode	TIMED	TIMED			

2.3 Aspect



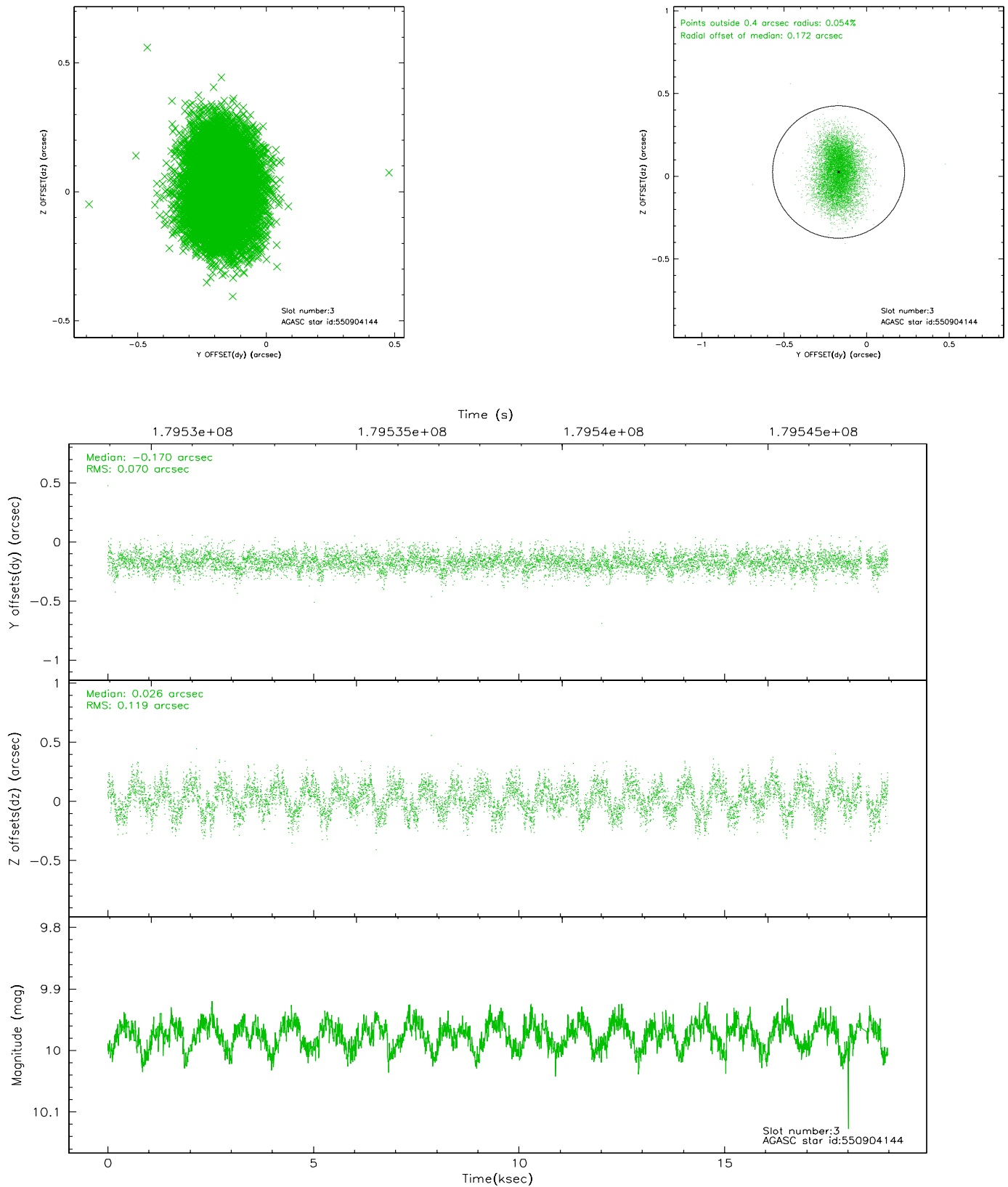


Slot Statistics

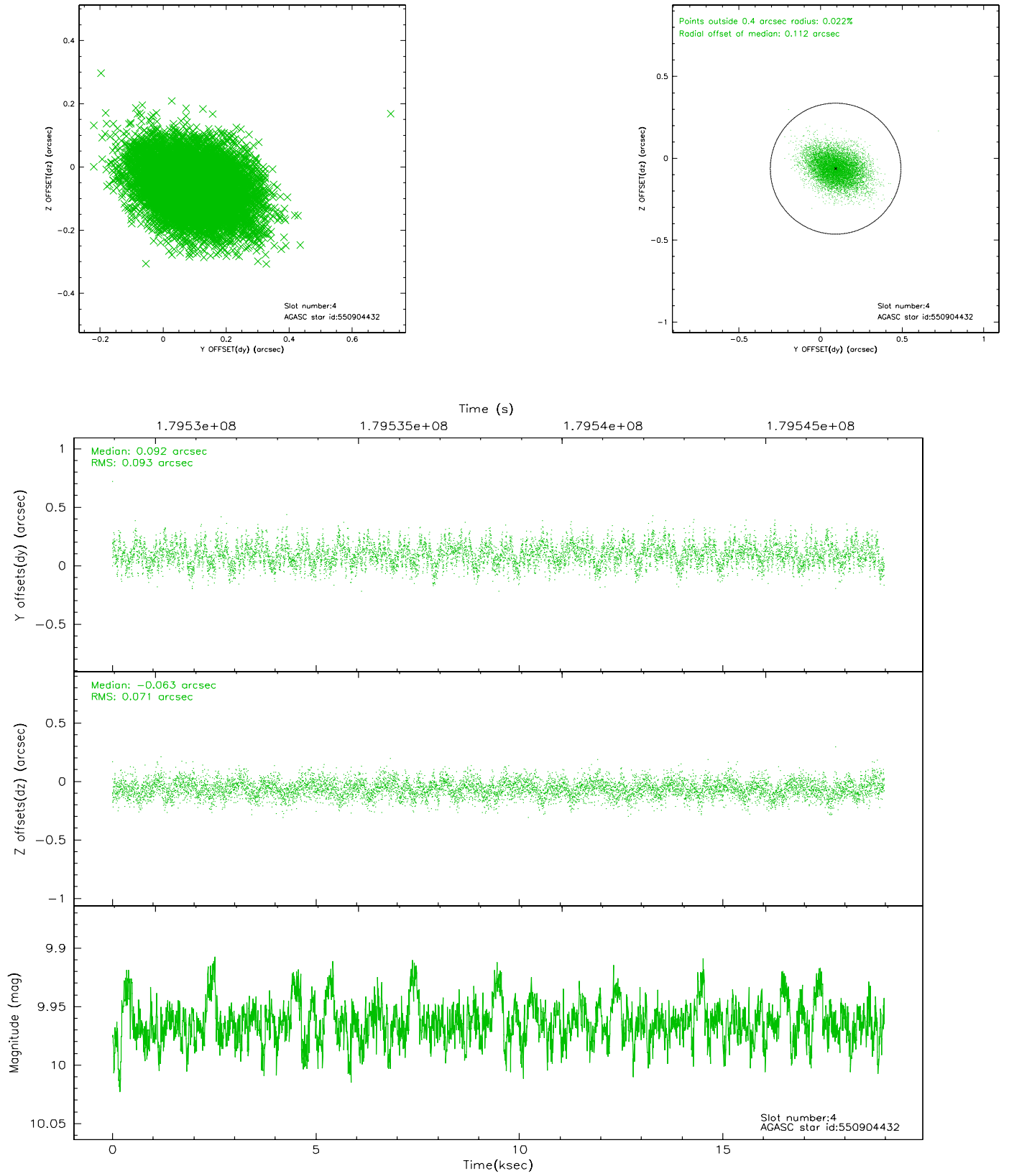
slot	status	id	mag	n_pts	med_dy	med_dz	dr1	dr2	ra	dec	mean_y	mean_z
0	FID	ACIS-S-2	7.10	4630	-0.050	0.010	0.006	0.011	0.000000	0.000000	-759.02	-1731.65
1	FID	ACIS-S-4	7.21	4628	0.027	0.022	0.005	0.010	0.000000	0.000000	2154.21	176.67
2	FID	ACIS-S-5	7.23	4630	-0.008	-0.023	0.006	0.011	0.000000	0.000000	-1811.59	170.47
3	GUIDE	550904144	9.97	9187	-0.170	0.026	0.148	0.238	265.494694	62.384319	578.79	-1652.34
4	GUIDE	550904432	9.96	9244	0.092	-0.063	0.124	0.206	264.926254	61.999420	2097.61	-2377.64
5	GUIDE	550906776	9.55	9254	0.021	0.077	0.103	0.171	265.681523	62.176080	1267.80	-1221.75
6	GUIDE	551037160	10.03	9252	0.034	-0.083	0.145	0.223	268.006636	62.765268	-1521.92	2196.17
7	GUIDE	551041488	9.22	9256	0.034	0.047	0.079	0.129	267.151193	62.209137	717.05	1187.70

2.4 Star Slots

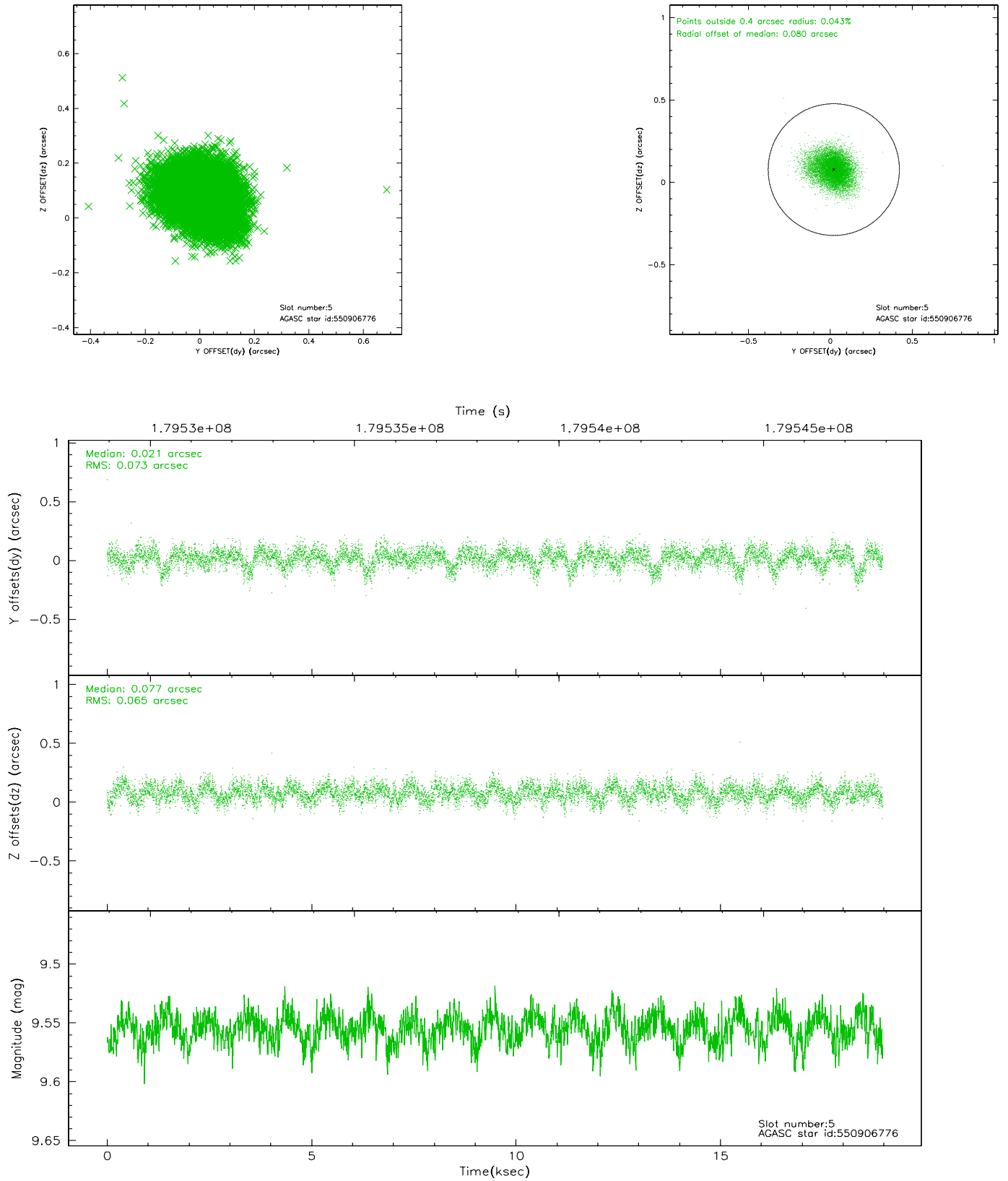
2.4.1 Slot 3



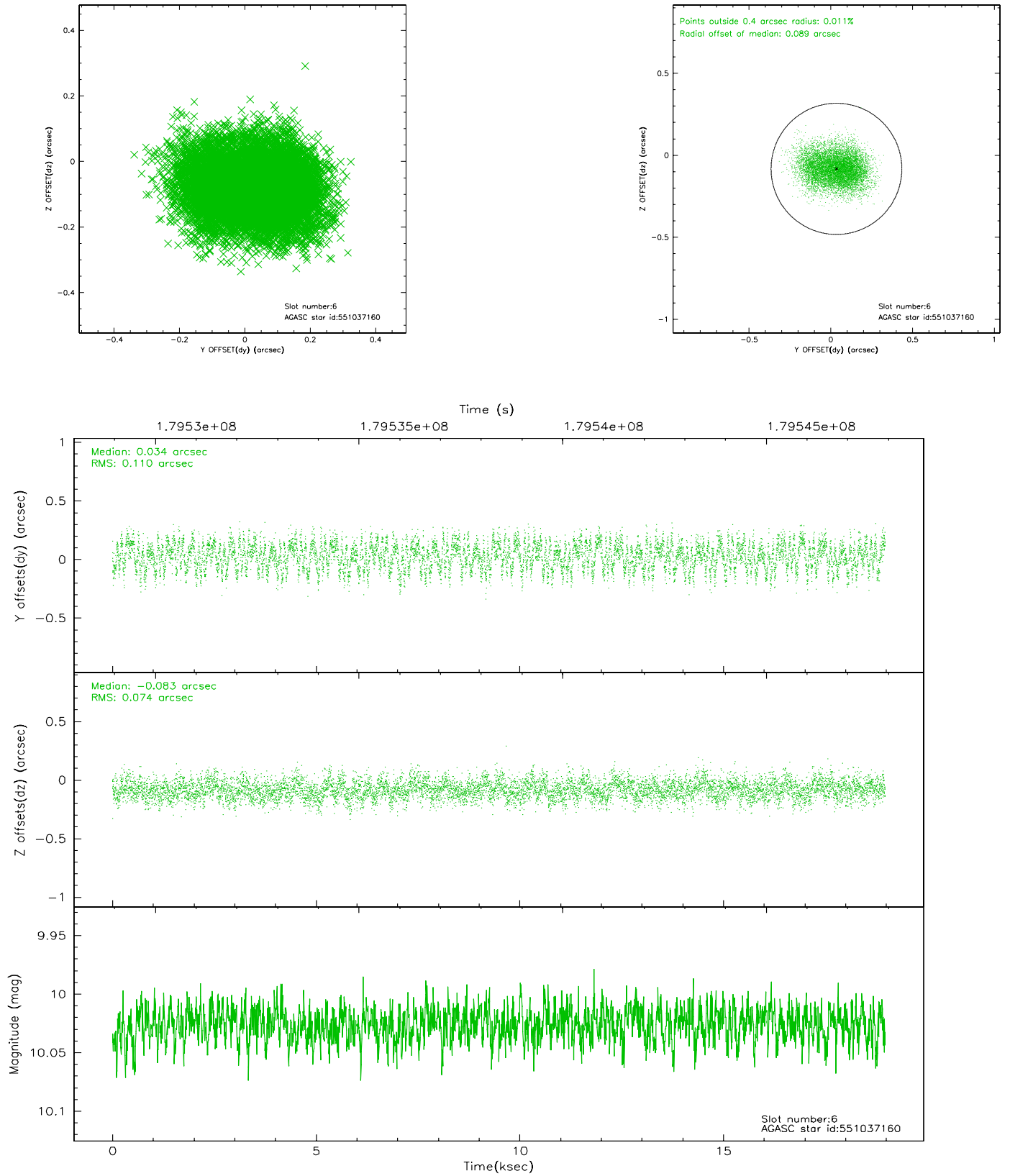
2.4.2 Slot 4



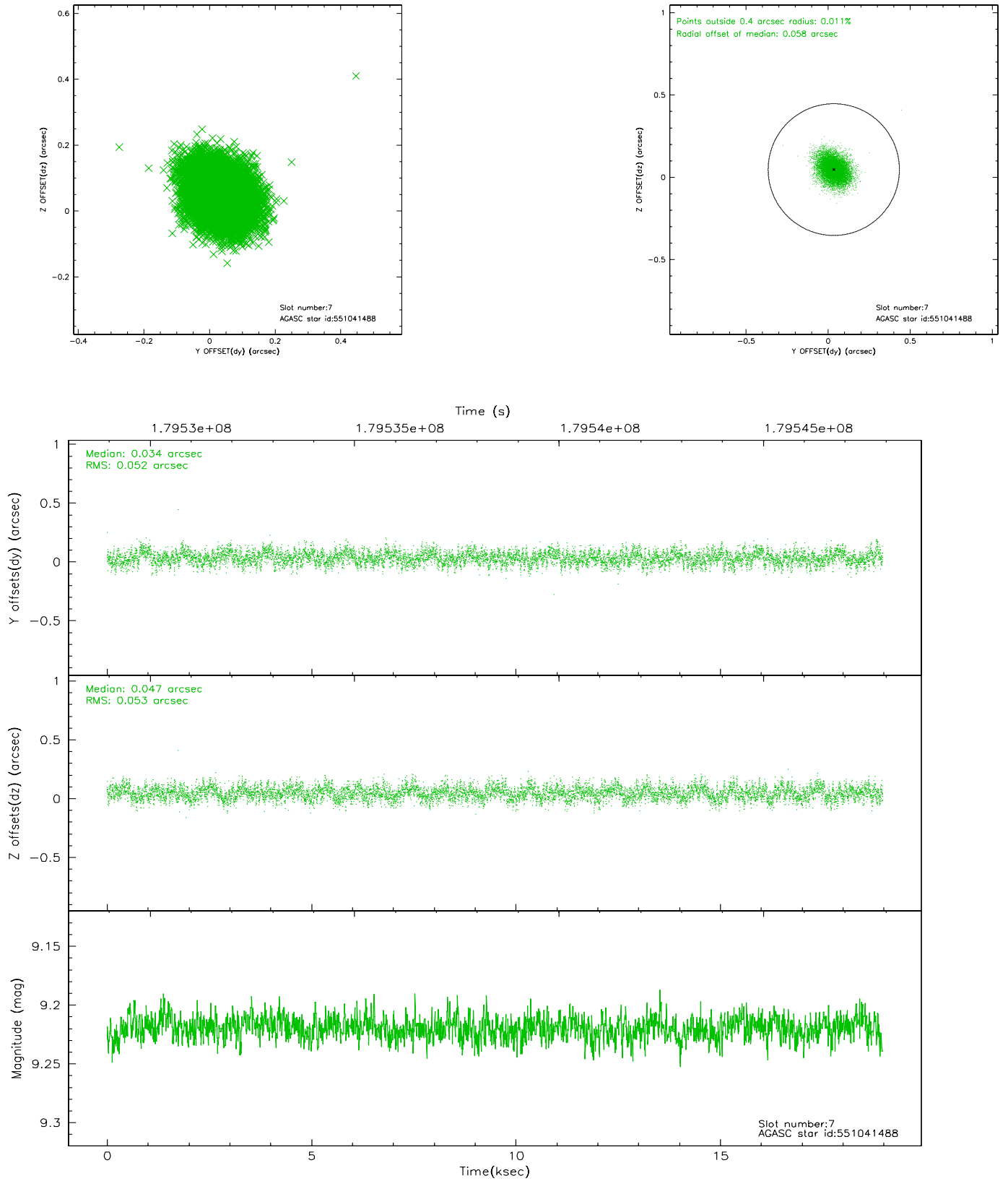
2.4.3 Slot 5



2.4.4 Slot 6

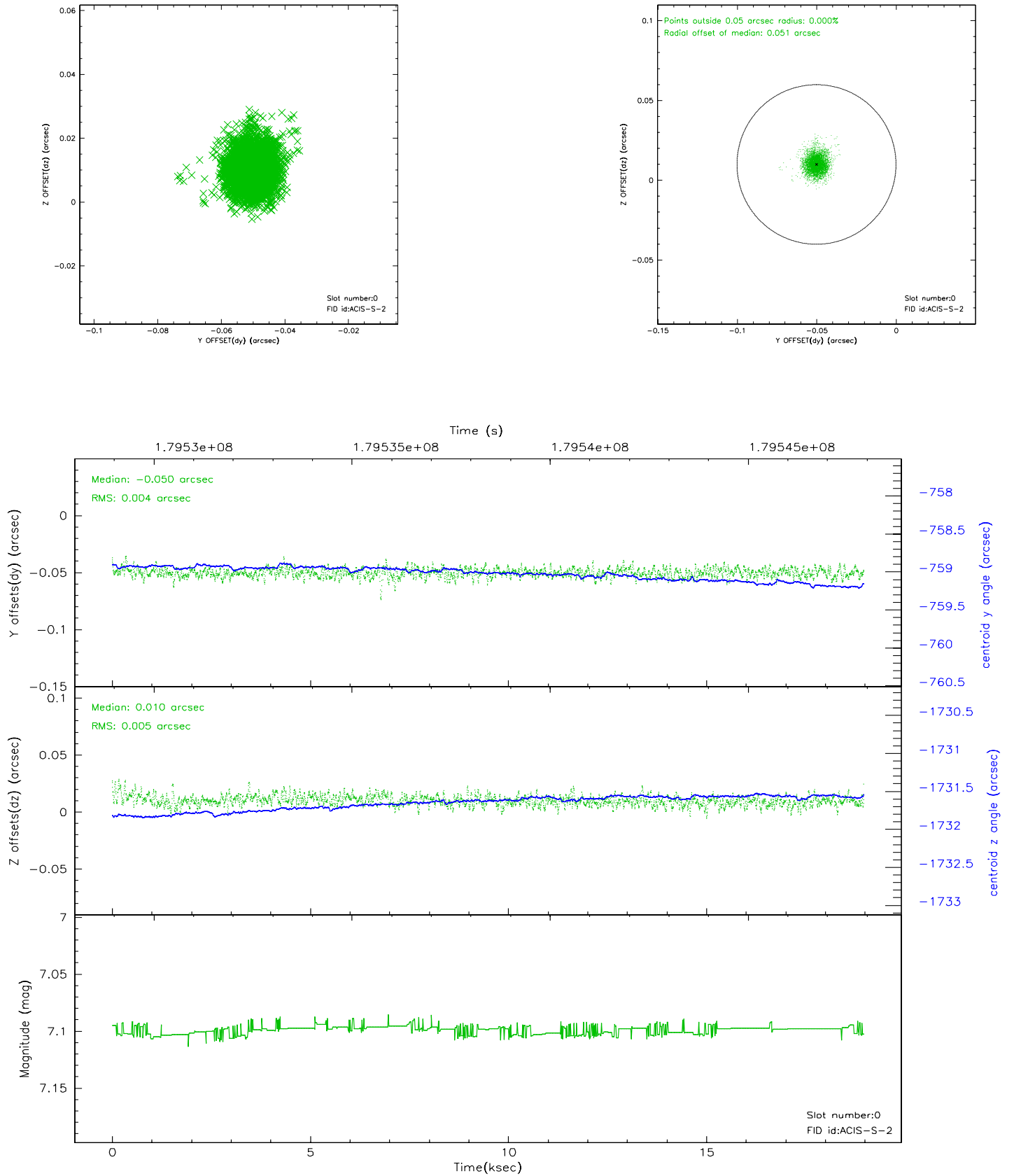


2.4.5 Slot 7

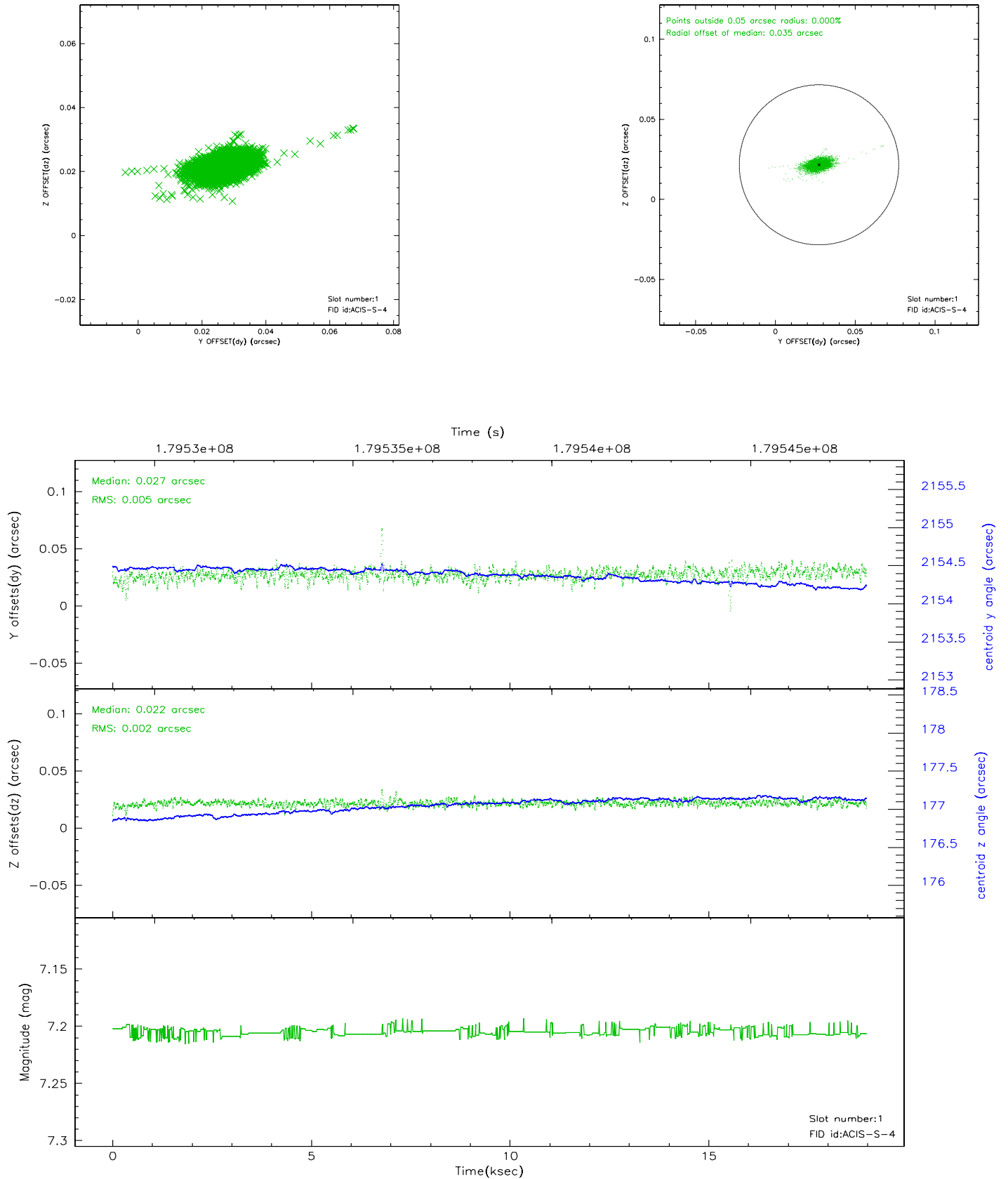


2.5 FID Slots

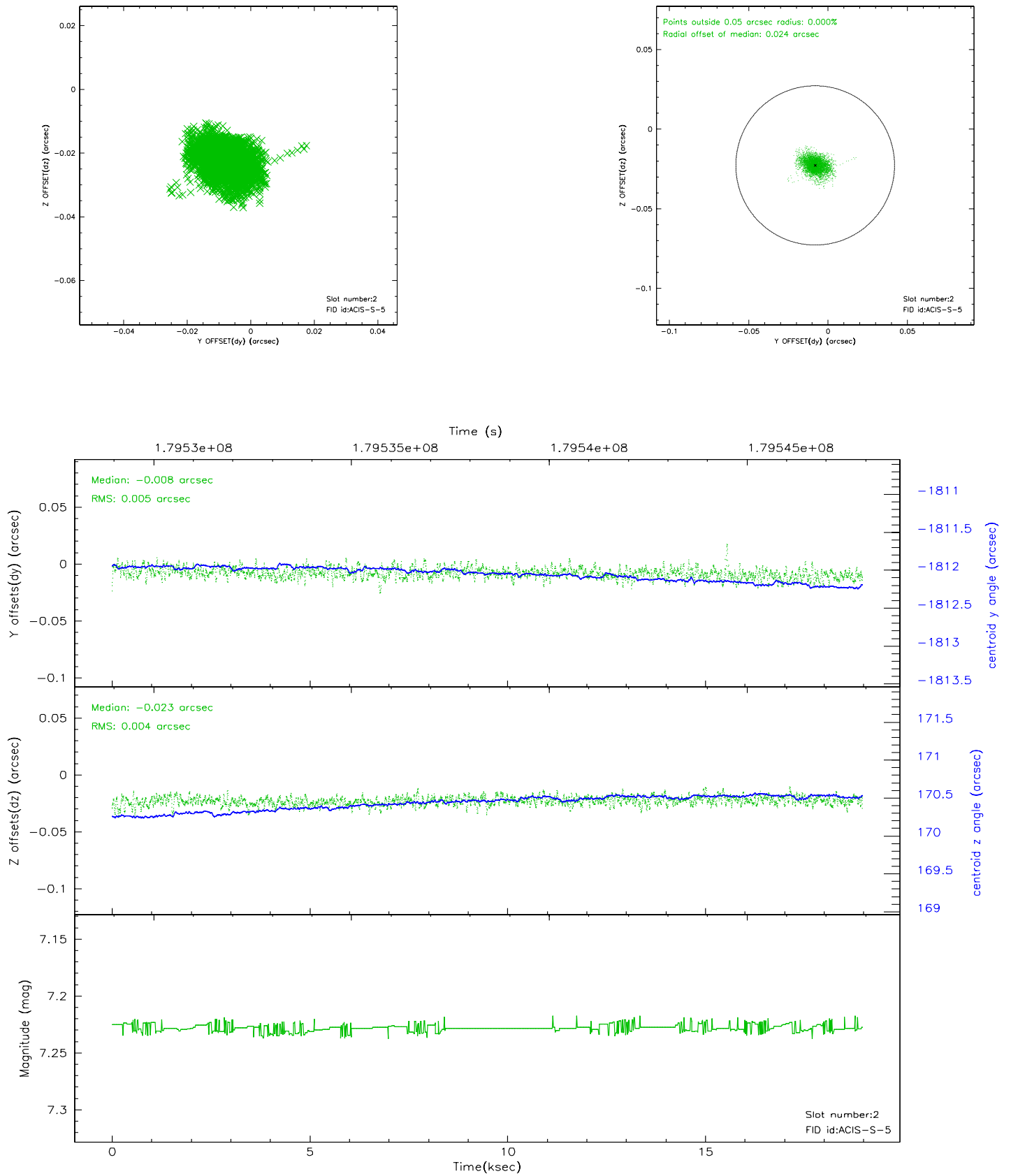
2.5.1 Slot 0



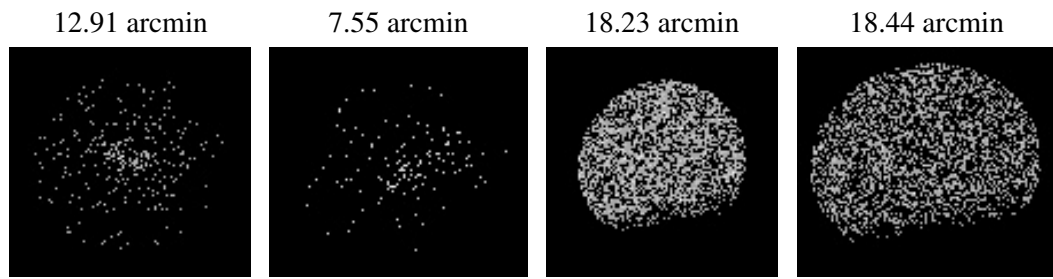
2.5.2 Slot 1



2.5.3 Slot 2



3 Point Sources



A Summary

A.1 Status

V&V Scientist	Beth Sundheim
V&V Date (YYYY-MM-DD)	2006.07.06
V&V Edition	1
V&V Disposition and Status	OK
V&V Charge Time	18.547

A.2 Comments