

V&V Reference Report

L2 ASCDS Version : 7.6.8.1

Observation 3928 - L2 Version 001
Chandra X-Ray Center

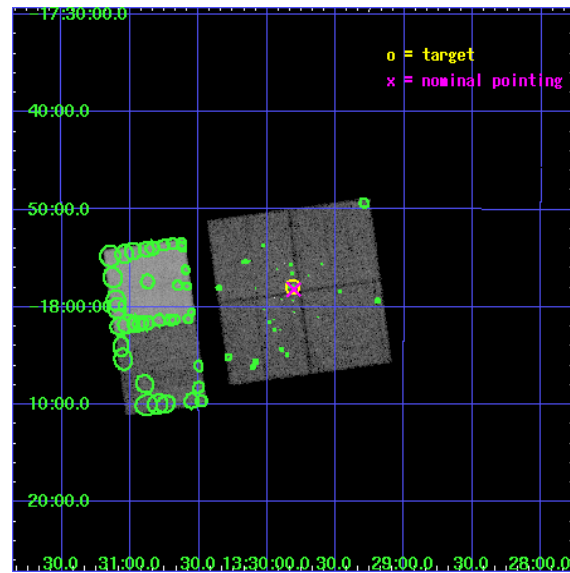
L2 Processing Date : Aug 12 2006

Contents

1	Front	2
2	OBI	3
2.1	OBI	3
2.1.1	Images	3
2.1.2	Bias	3
2.1.3	Parameters	4
2.1.4	Events	4
2.2	Compared Parameters	5
2.3	Aspect	6
2.4	Star Slots	9
2.4.1	Slot 3	9
2.4.2	Slot 4	10
2.4.3	Slot 5	11
2.4.4	Slot 6	12
2.4.5	Slot 7	13
2.5	FID Slots	14
2.5.1	Slot 0	14
2.5.2	Slot 1	15
2.5.3	Slot 2	16
3	Point Sources	17
A	Summary	18
A.1	Status	18
A.2	Comments	18

1 Front

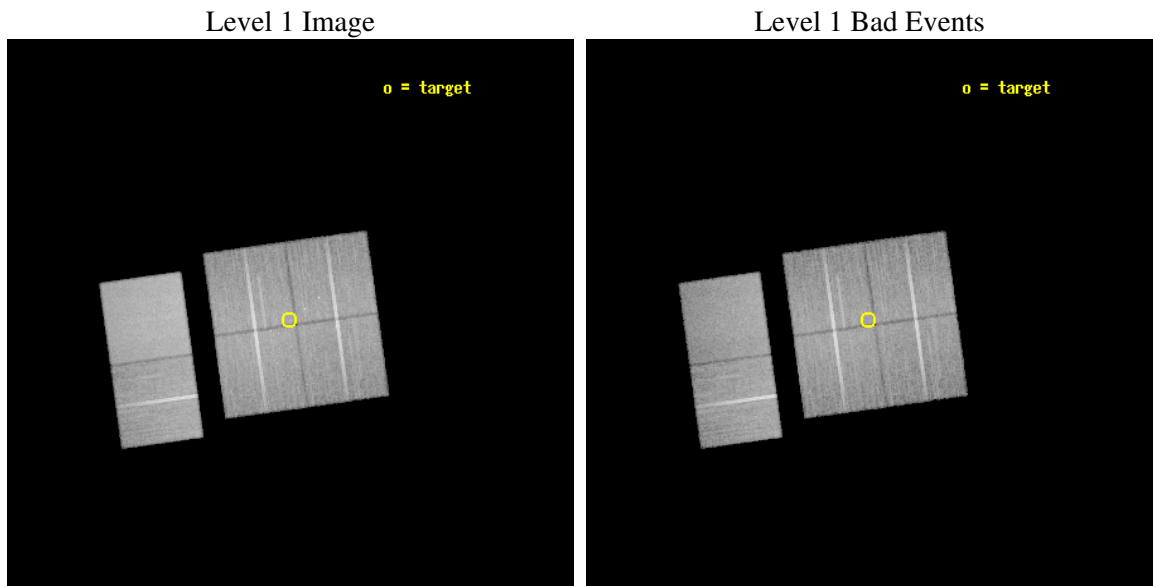
seq_num	600302
obs_id	3928
title	X-RAY HALOES OF MASSIVE DISC GALAXIES: TESTING GALAXY FORMATION
observer	Dr. Kristian Pedersen
object	NGC 5170
dtcycle	0
cycle	P
ra_targ	202.45375
dec_targ	-17.9665
ra_nom	202.45126655337
dec_nom	-17.970450388429
roll_nom	262.11238145089
revision	2
ontime	33455.95900473
livetime	33032.319507052
ontime0	33459.199875355
ontime1	33446.236034125
ontime2	33459.199875355
ontime3	33455.95900473
ontime6	33459.199875355
ontime7	33459.199875355
l2events	212029



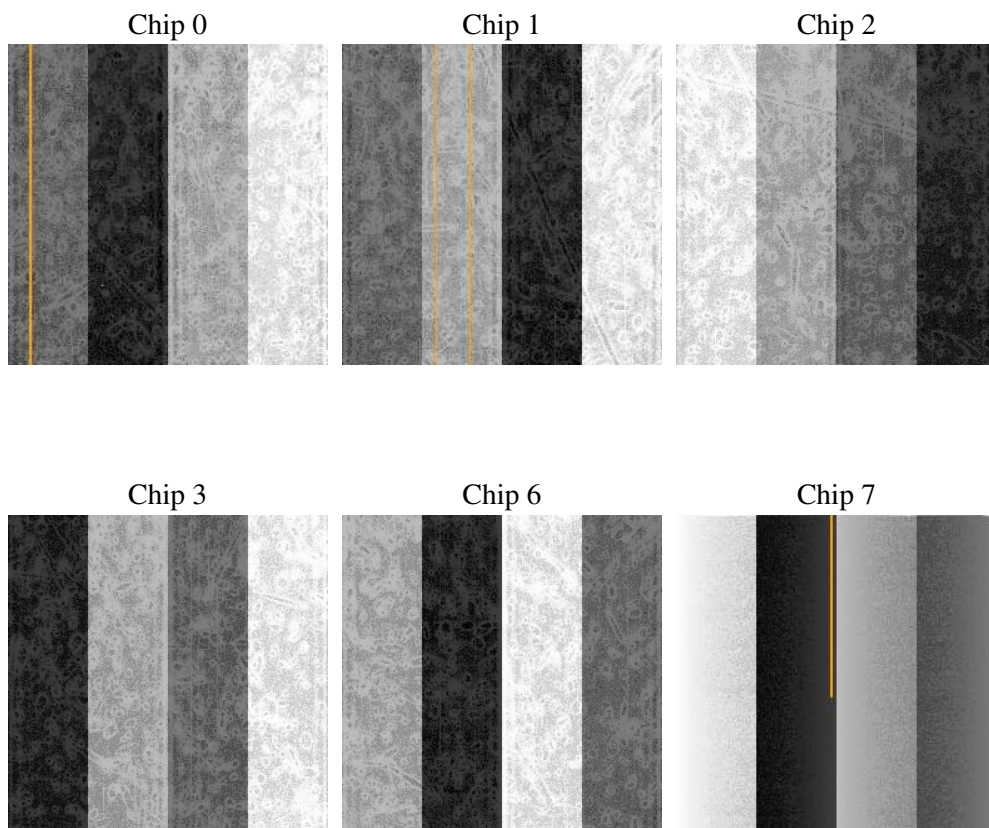
2 OBI

2.1 OBI

2.1.1 Images



2.1.2 Bias



2.1.3 Parameters

obi_num	1
ascdsver	7.6.8.1
caldsver	3.2.3
date	2006-08-12T03:46:41
revision	2

sched_exp_time	33300.000000
ontime	33537.948470652
ontime0	33541.189341277
ontime1	33528.225500047
ontime2	33541.189321369
ontime3	33537.948470652
ontime6	33541.189341277
ontime7	33541.189341277
l1events	1295953

2.1.4 Events

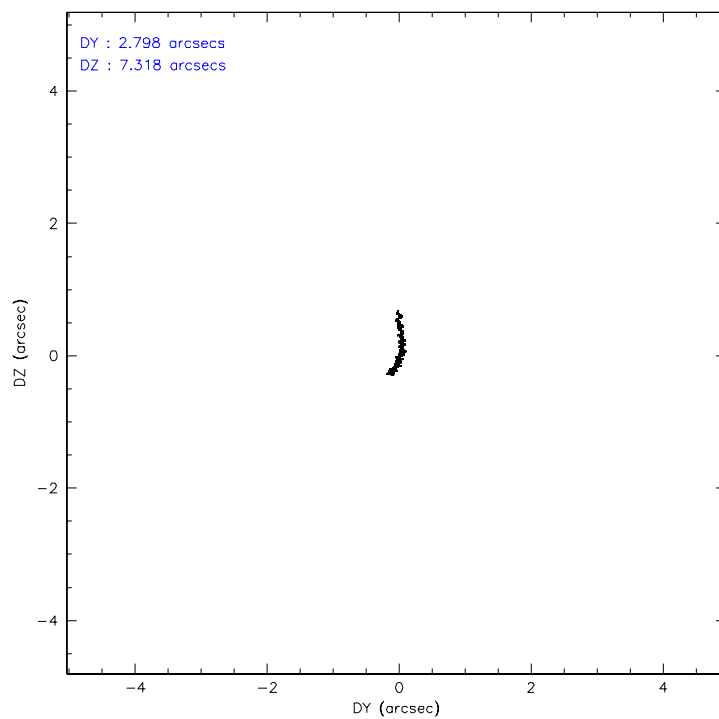
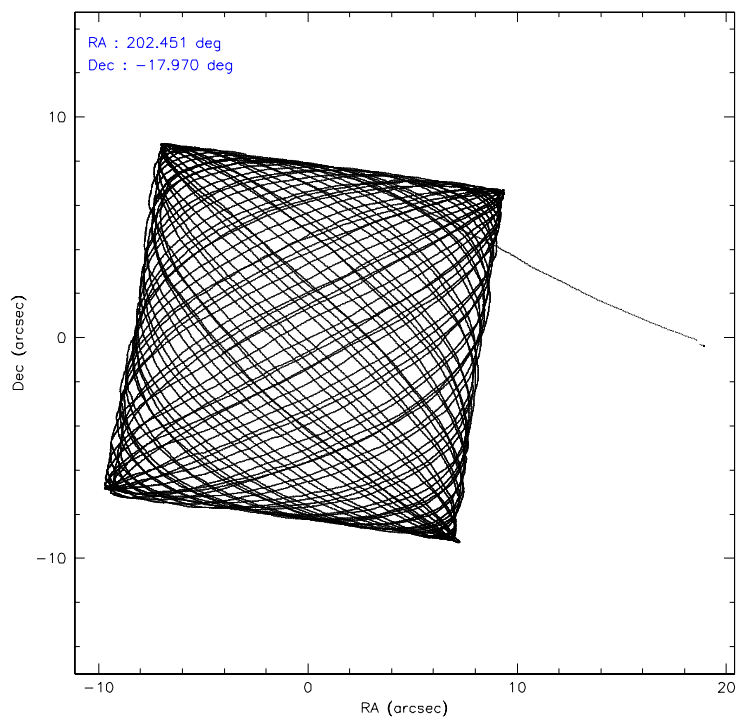
	ccd 0	ccd 1	ccd 2	ccd 3	ccd 6	ccd 7
level 1 events	187974	195682	208497	204712	219455	279633
rejected events	162769	169200	183229	180209	194620	173762
rejected %	86%	86%	87%	88%	88%	62%

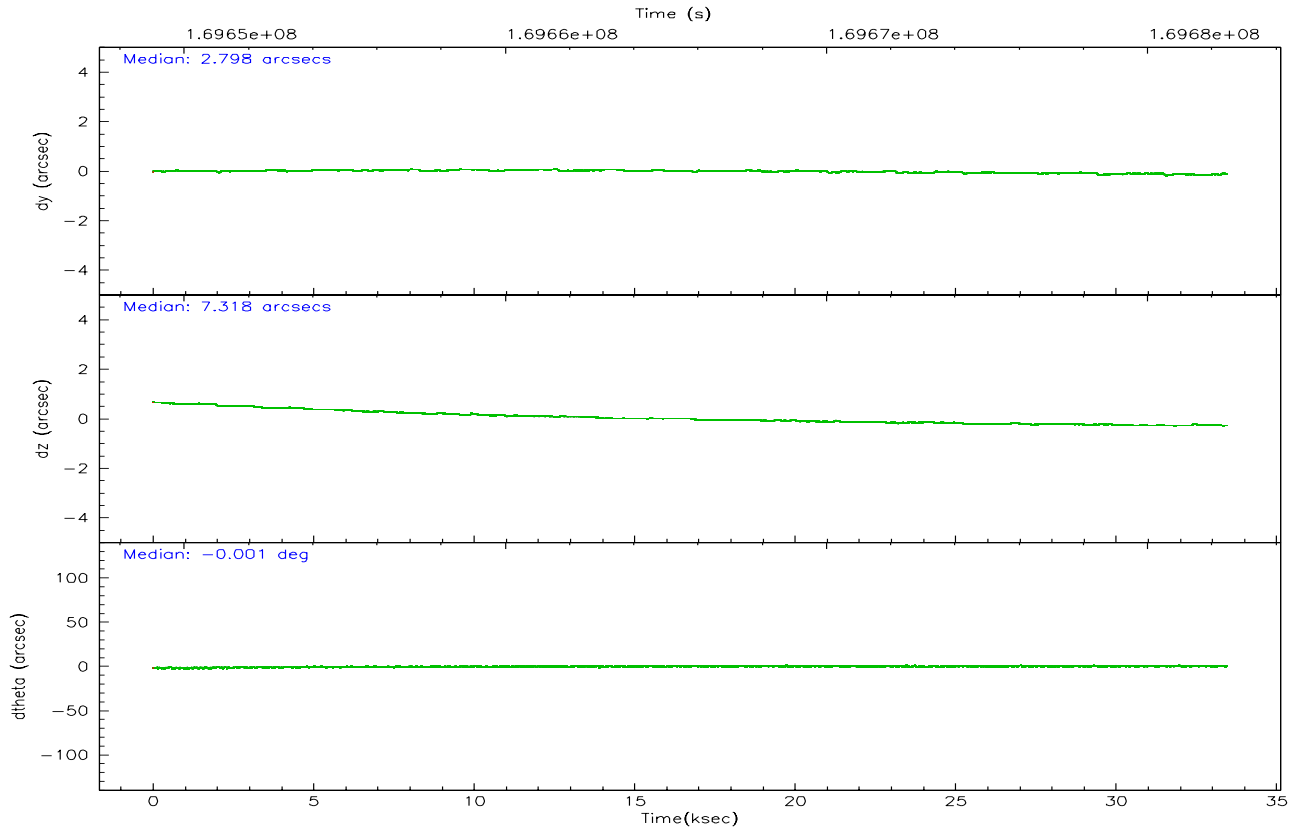
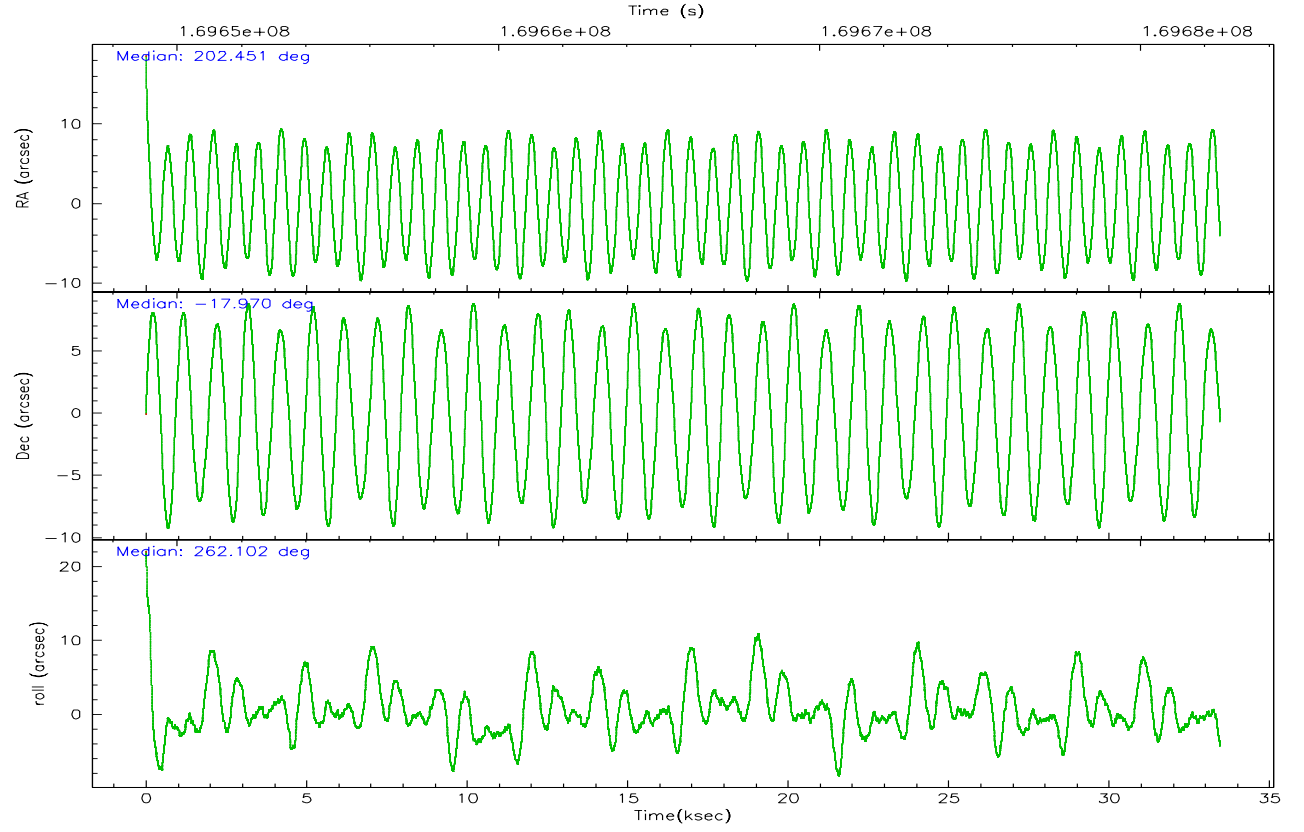
	ccd 0	ccd 1	ccd 2	ccd 3	ccd 6	ccd 7
grade 0 events	11026	10818	11581	10915	10078	6118
	5%	5%	5%	5%	4%	2%
grade 1 events	100	104	111	128	97	149
	0%	0%	0%	0%	0%	0%
grade 2 events	5096	5373	5033	4626	5064	26506
	2%	2%	2%	2%	2%	9%
grade 3 events	2503	2648	2312	2303	2467	5449
	1%	1%	1%	1%	1%	1%
grade 4 events	2282	2661	2437	2465	2323	5381
	1%	1%	1%	1%	1%	1%
grade 5 events	8260	8703	8200	8997	9566	18993
	4%	4%	3%	4%	4%	6%
grade 6 events	4370	5031	3955	4260	4972	62677
	2%	2%	1%	2%	2%	22%
grade 7 events	154337	160344	174868	171018	184888	154360
	82%	81%	83%	83%	84%	55%

2.2 Compared Parameters

Parameter	Planned	Actual	Parameter	Planned	Actual
Instrument	ACIS	ACIS	Obspar format version number	6	6
Detector	ACIS-012367	ACIS-012367	Obspar file type	PREDICTED	ACTUAL
Grating	NONE	NONE	Obspar update status	NONE	UPDATED
Data mode	VFAINT	VFAINT	On-chip summing requested	N	N
Observation mode	POINTING	POINTING	Subarray requested	NONE	NONE
Pointing RA	202.440302	202.451266553374	Alternating exposures requested	N	N
Pointing Dec	-17.945151	-17.97045038842903	Primary exposure time	0.000000	3.2
Pointing Roll	261.900307	262.1123814508924			
SIM focus pos (mm)	-0.782348	-0.7809083437167272			
SIM defocus (mm)	0	0.001439871863259334			
SIM translation stage pos (mm)	-233.592463	-233.5874344608287			
SIM translation stage offset (mm)	0	-0.005018542100998502			
Observation start time	169649182.184000	169648084.30488			
Observation start date	2003-05-18T12:45:18	2003-05-18T12:28:04			
Observation end time	169682482.184000	169683103.43136			
Observation end date	2003-05-18T22:00:18	2003-05-18T22:11:43			
Read mode	TIMED	TIMED			

2.3 Aspect



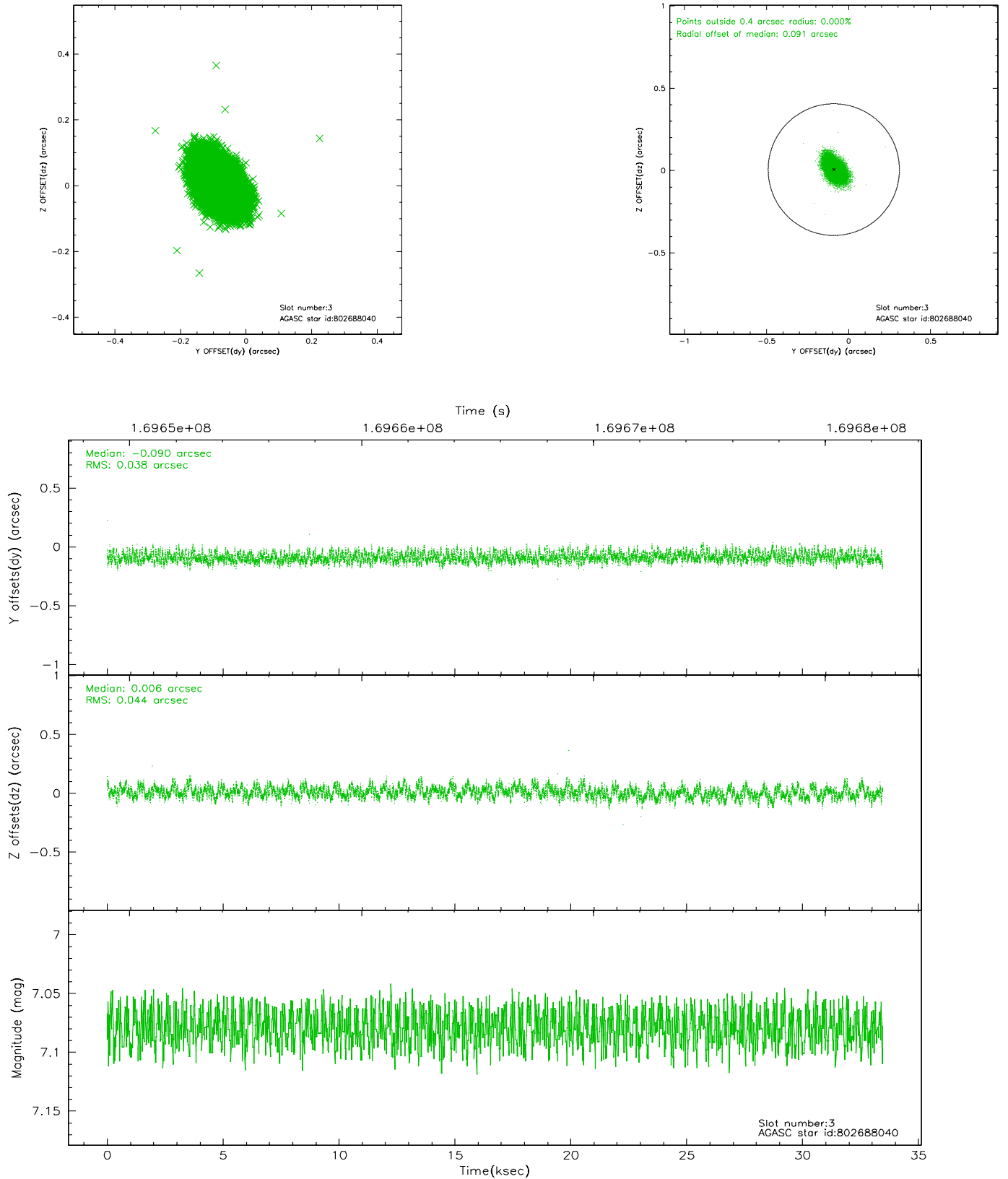


Slot Statistics

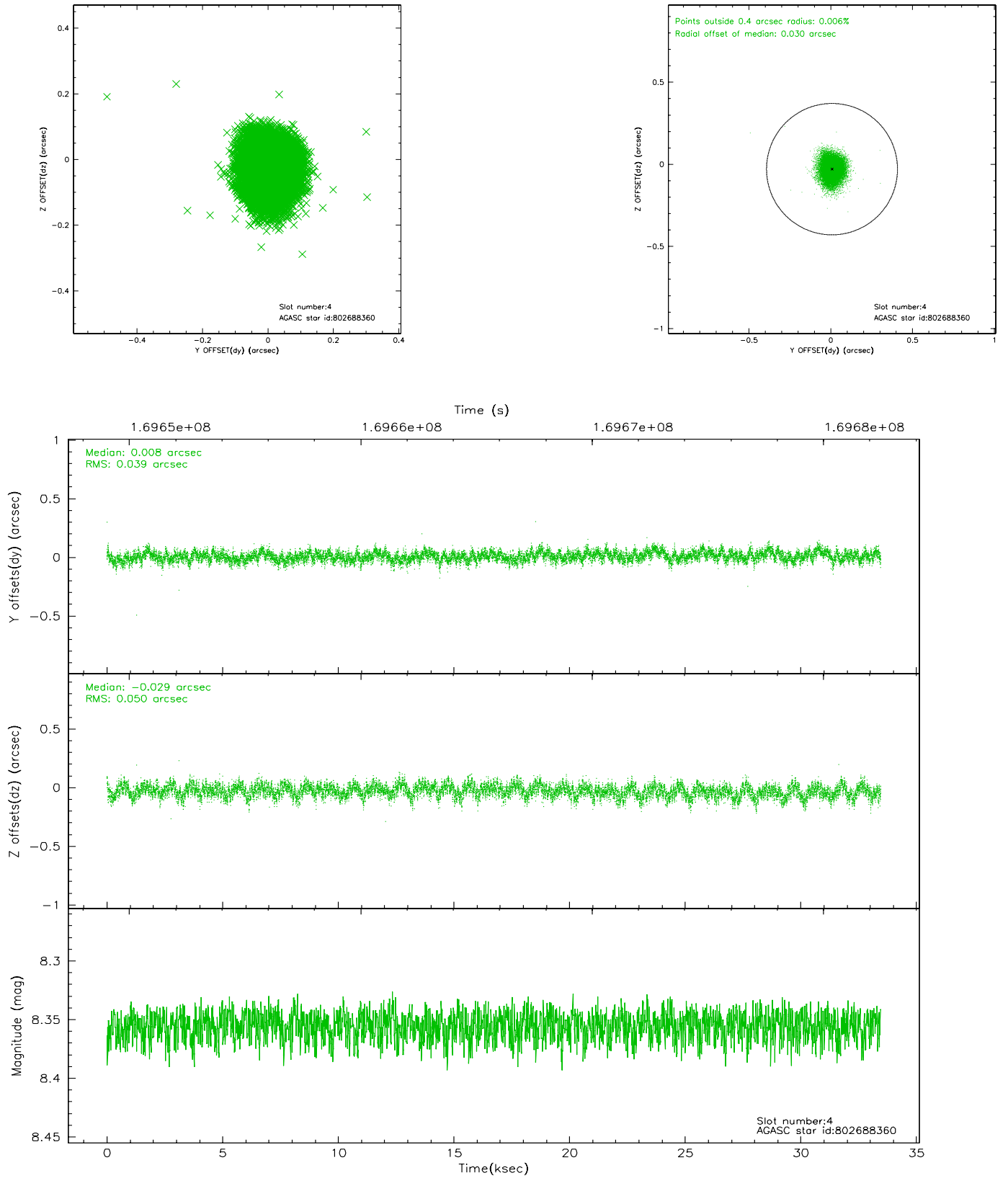
slot	status	id	mag	n_pts	med_dy	med_dz	dr1	dr2	ra	dec	mean_y	mean_z
0	FID	ACIS-I-1	7.25	8163	-0.003	0.041	0.024	0.034	0.000000	0.000000	937.00	-830.75
1	FID	ACIS-I-5	7.24	8163	-0.056	0.052	0.014	0.022	0.000000	0.000000	-1811.11	1066.78
2	FID	ACIS-I-6	7.26	8163	-0.029	-0.022	0.018	0.026	0.000000	0.000000	402.51	1711.23
3	GUIDE	802688040	7.08	16324	-0.090	0.006	0.062	0.102	201.795060	-17.928948	258.25	-2195.71
4	GUIDE	802688360	8.36	16323	0.008	-0.029	0.067	0.110	201.899269	-18.032155	574.34	-1789.15
5	GUIDE	802816944	9.57	16270	0.096	-0.041	0.103	0.186	202.201674	-17.995786	296.75	-783.15
6	GUIDE	802817240	8.85	16322	-0.019	-0.044	0.076	0.121	203.010877	-17.569303	-1612.51	1748.25
7	GUIDE	802818456	9.61	16311	-0.000	0.115	0.100	0.162	202.842962	-18.066806	241.11	1426.21

2.4 Star Slots

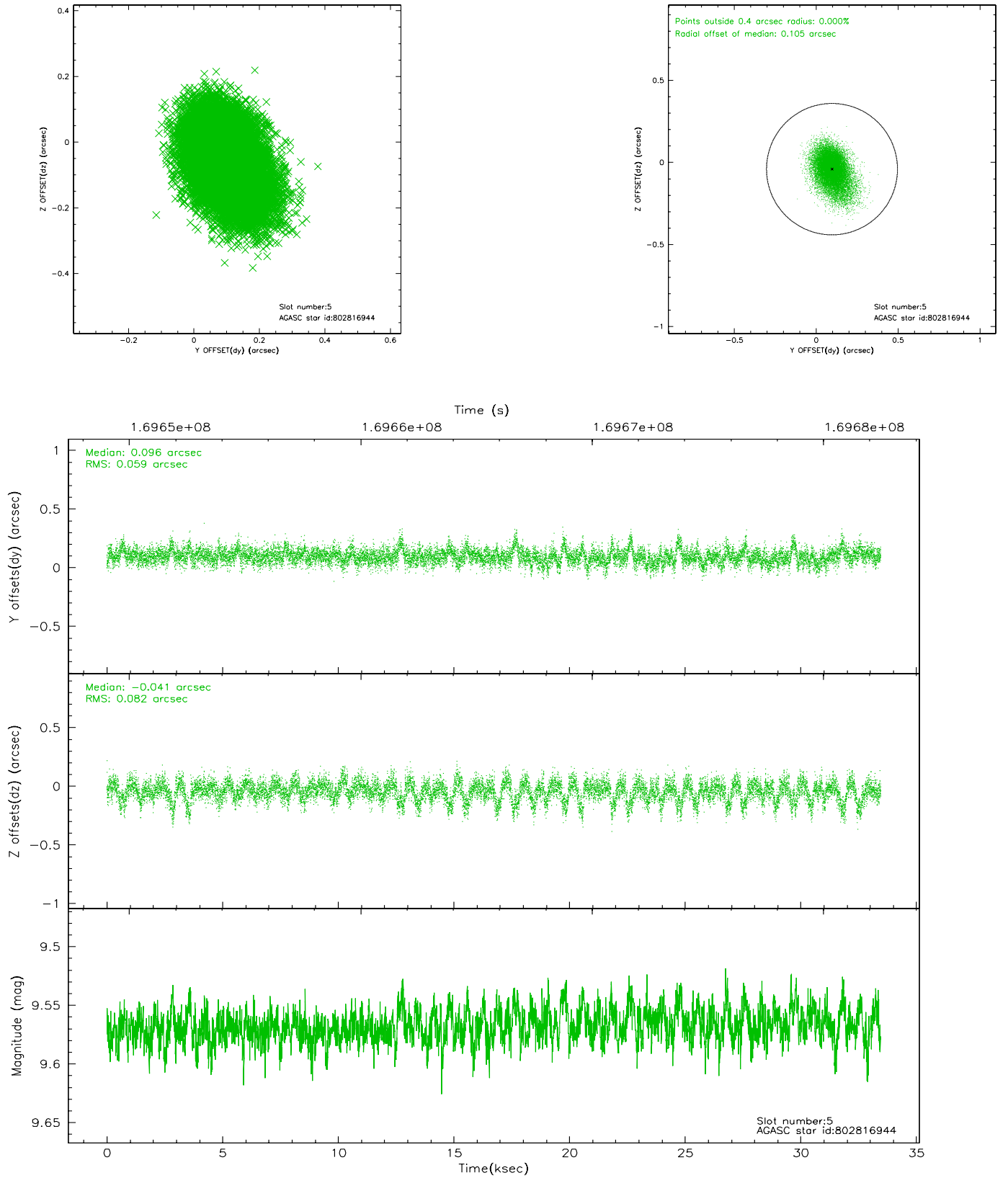
2.4.1 Slot 3



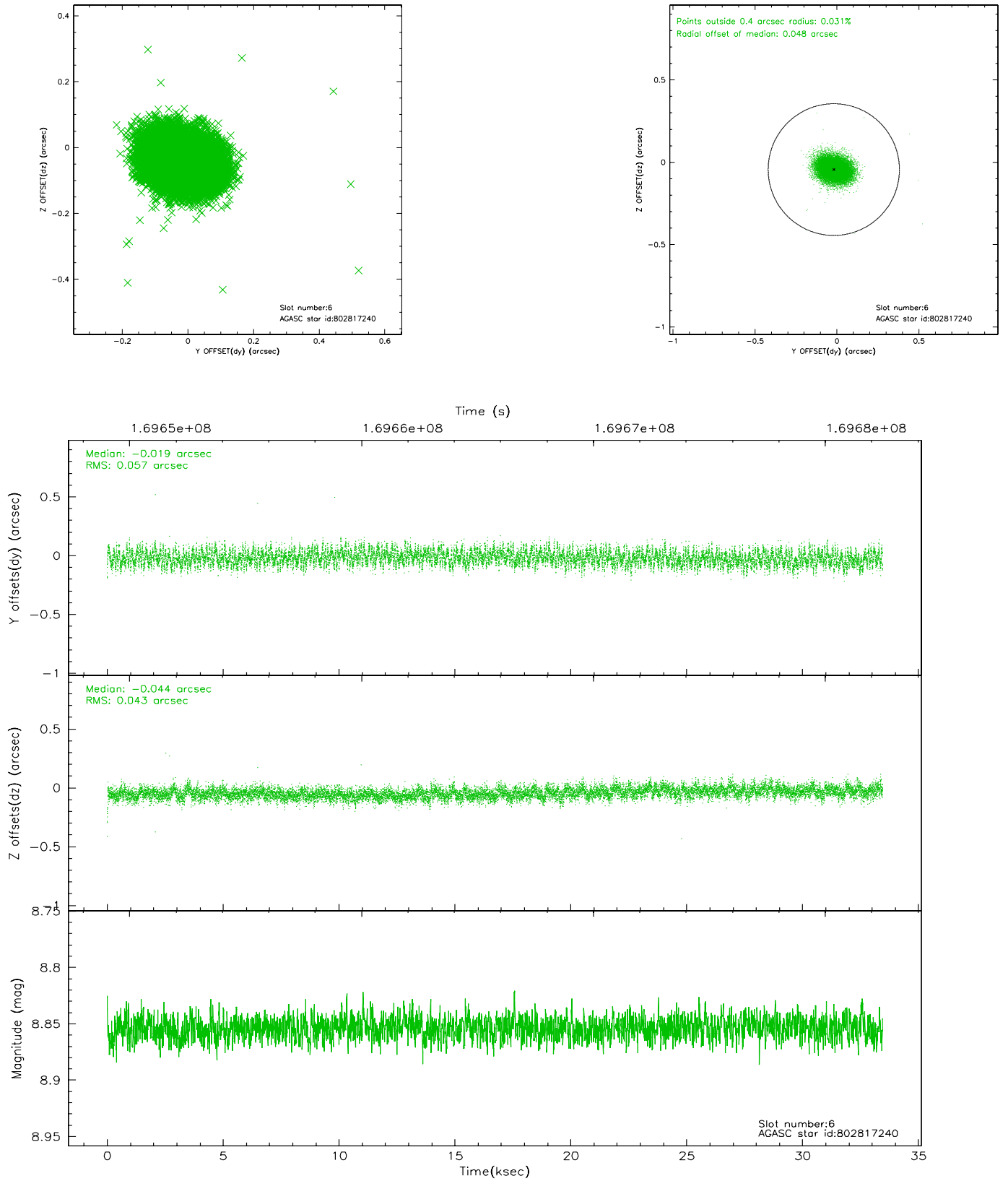
2.4.2 Slot 4



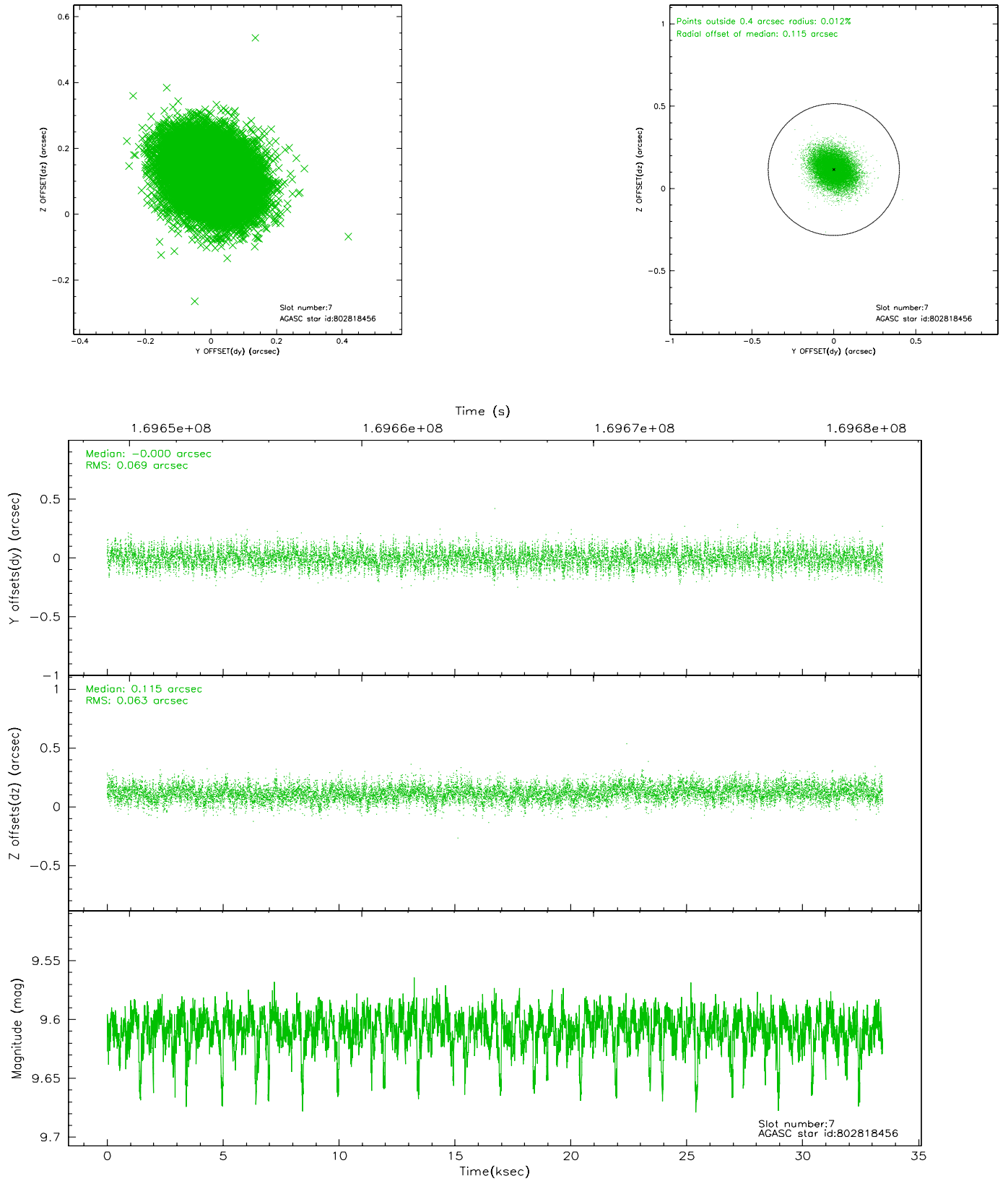
2.4.3 Slot 5



2.4.4 Slot 6

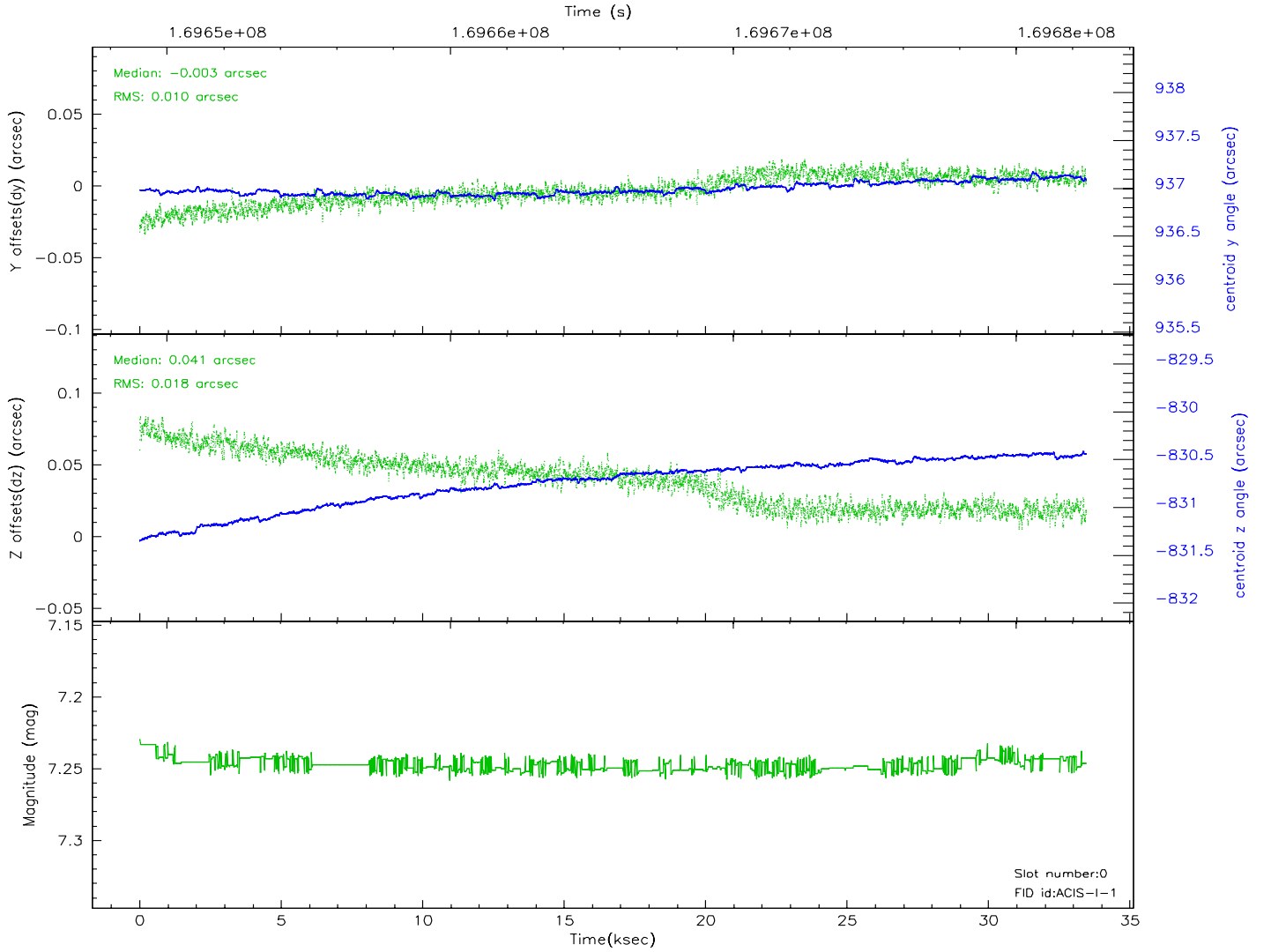
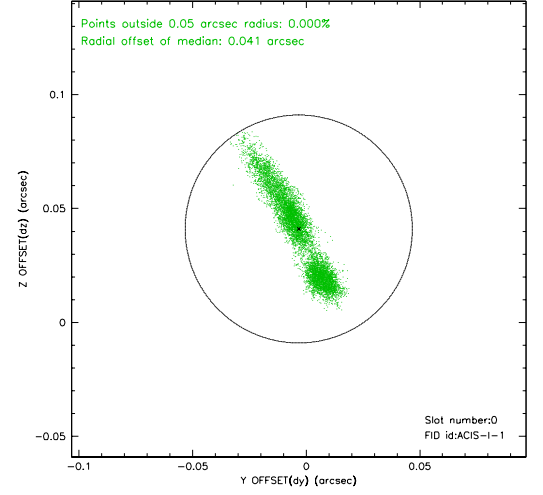
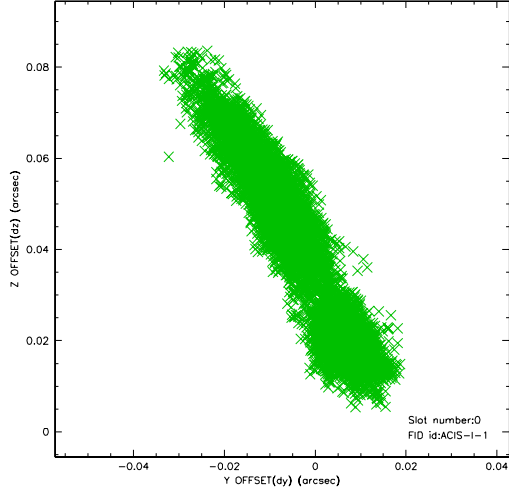


2.4.5 Slot 7

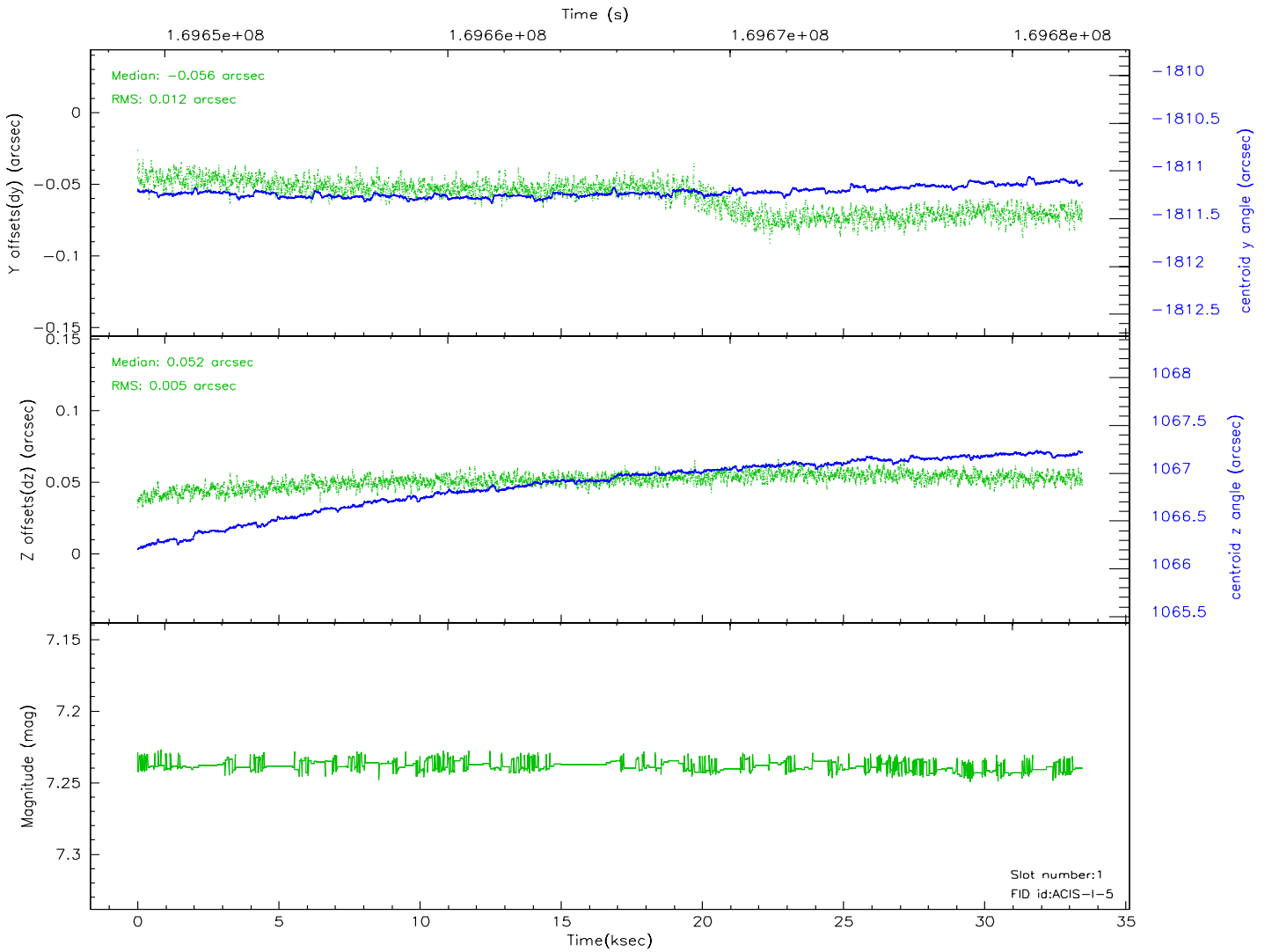
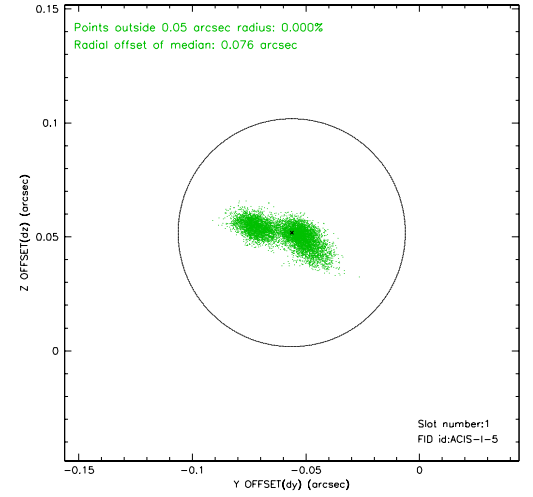
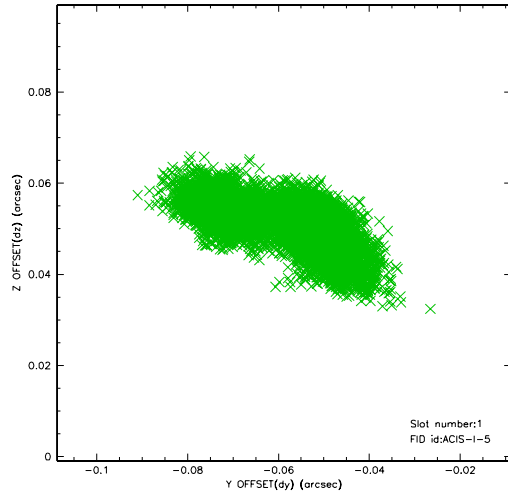


2.5 FID Slots

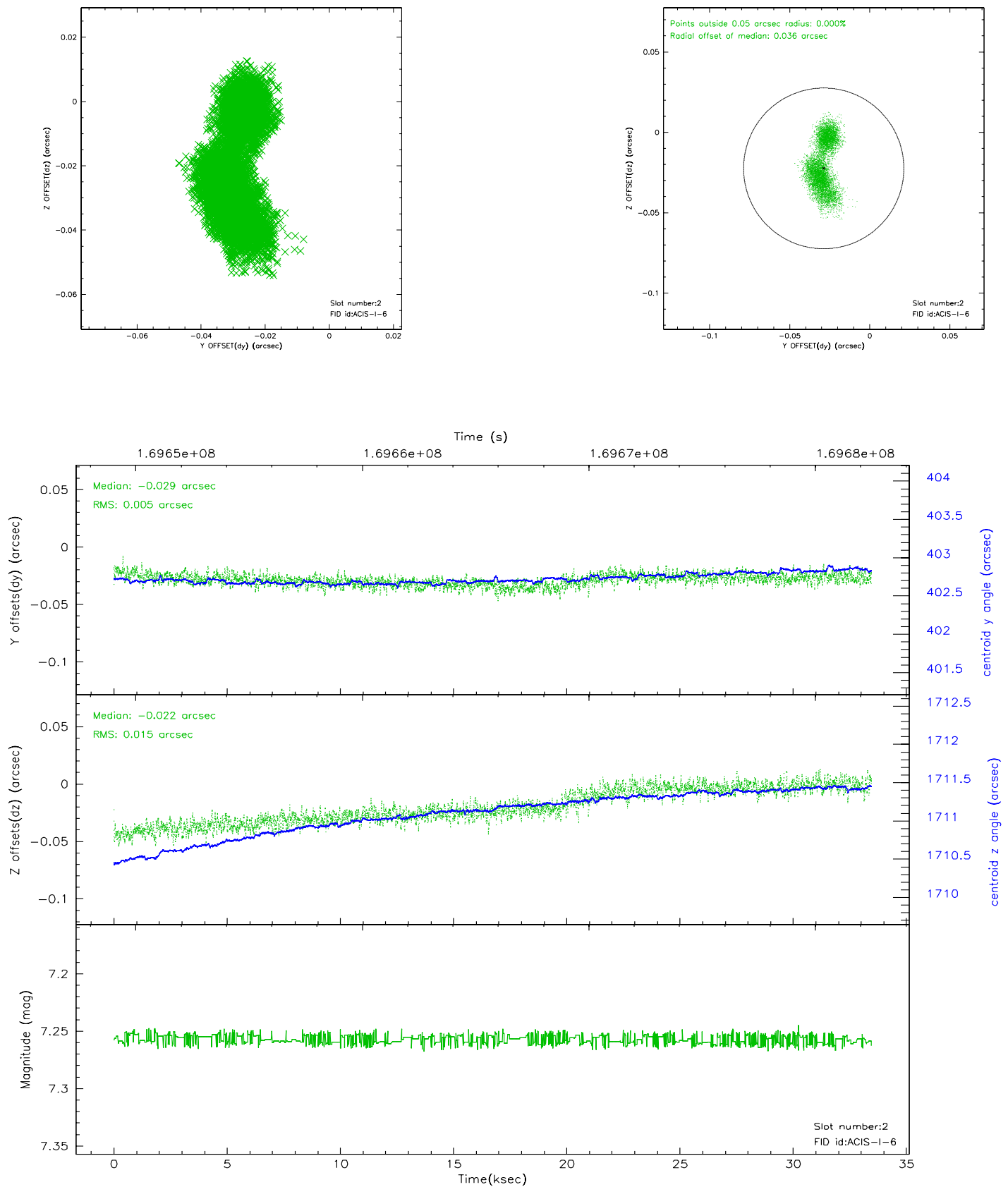
2.5.1 Slot 0



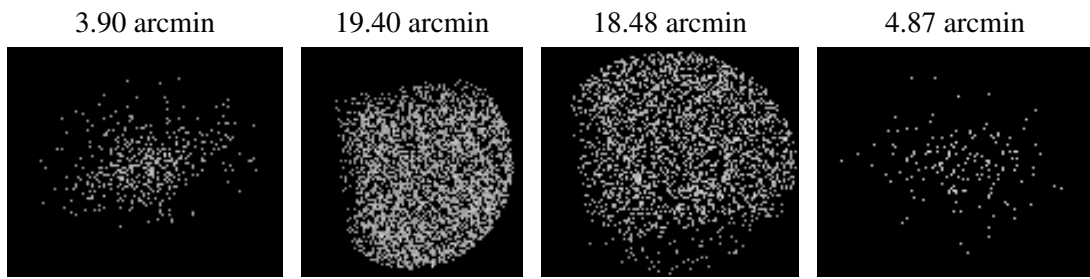
2.5.2 Slot 1



2.5.3 Slot 2



3 Point Sources



A Summary

A.1 Status

V&V Scientist	Jen Lauer
V&V Date (YYYY-MM-DD)	2006.08.13
V&V Edition	1
V&V Disposition and Status	OK
V&V Charge Time	33.455

A.2 Comments