

V&V Reference Report

L2 ASCDS Version : 8.4.5

Observation 3788 - L2 Version 4
Chandra X-Ray Center

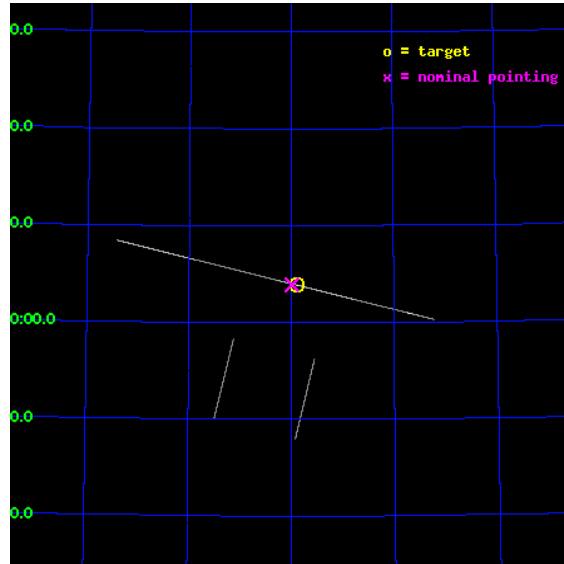
L2 Processing Date : Nov 2 2012

Contents

1	Front	2
2	OBI	3
2.1	OBI	3
2.1.1	Images	3
2.1.2	Bias	3
2.1.3	Parameters	4
2.1.4	Events	4
2.2	Compared Parameters	5
2.3	Aspect	6
2.4	Star Slots	9
2.4.1	Slot 3	9
2.4.2	Slot 4	10
2.4.3	Slot 5	11
2.4.4	Slot 6	12
2.4.5	Slot 7	13
2.5	FID Slots	14
2.5.1	Slot 0	14
2.5.2	Slot 1	15
2.5.3	Slot 2	16
A	Summary	17
A.1	Status	17
A.2	Comments	17

1 Front

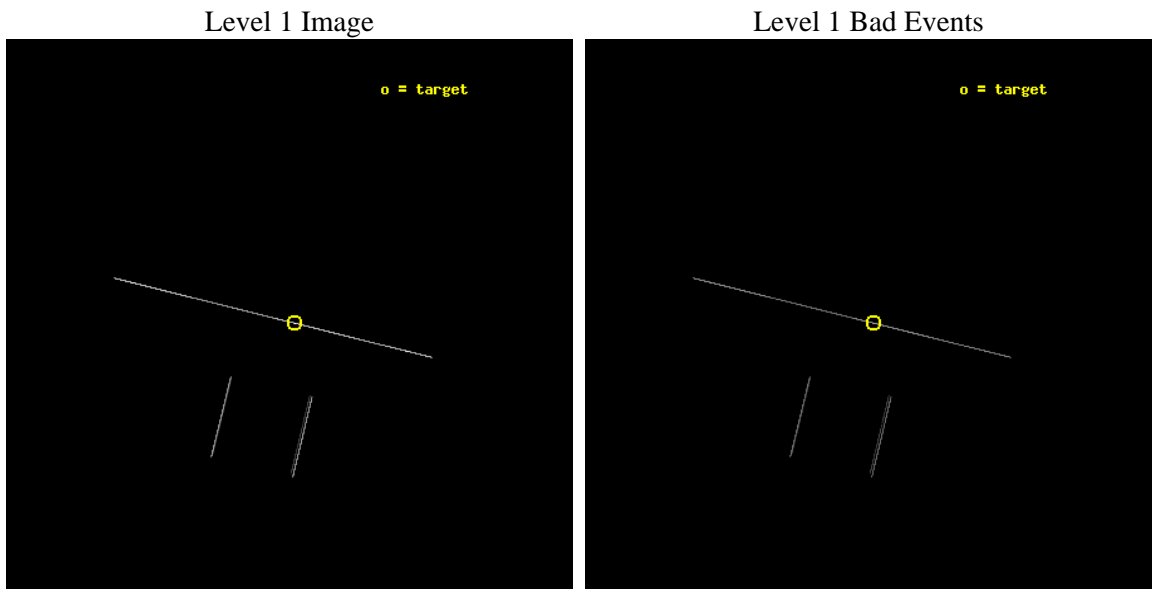
seq_num	400275	Sequence number
obs_id	3788	Observation id
title	MONITORING THE SPECTRAL VARIABILITY OF THE ULTRALUMINOUS X-RAY SOURCE IN HOLMBERG IX	Proposal title
observer	Dr. Patrick Slane	Principal investigator
object	1E0953.8+6918	Source name
ra_targ	149.470833	Observer's specified target RA [deg]
dec_targ	69.064167	Observer's specified target Dec [deg]
ra_nom	149.4979411727	Nominal RA [deg]
dec_nom	69.064839975017	Nominal Dec [deg]
roll_nom	13.822570590276	Nominal Roll [deg]
revision	4	Processing version of data
ontime	14511.790018201	Sum of GTIs [s]
livetime	14455.103338442	Livetime [s]
ontime2	14511.790344447	Sum of GTIs [s]
ontime3	14511.79123354	Sum of GTIs [s]
ontime5	14511.790018767	Sum of GTIs [s]
ontime6	14511.790018529	Sum of GTIs [s]
ontime7	14511.790018201	Sum of GTIs [s]
ontime8	14513.25	Sum of GTIs [s]
l2events	193445	Number of level 2 events



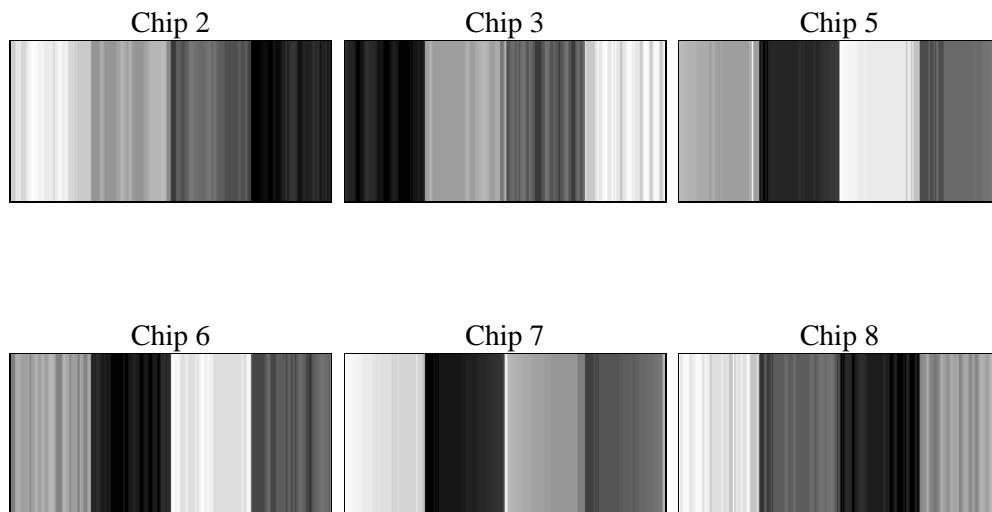
2 OBI

2.1 OBI

2.1.1 Images



2.1.2 Bias



2.1.3 Parameters

obi_num	0	Obi number	sched_exp_time	14000.000000	[s] Scheduled observation exposure time
ascdsver	8.4.5	Processing system revision	ontime	14511.790018201	Sum of GTIs [s]
caldsver	4.5.2	 	ontime2	14511.790344447	Sum of GTIs [s]
date	2012-11-02T18:01:18	Date and time of file creation	ontime3	14511.79123354	Sum of GTIs [s]
revision	4	Processing version of data	ontime5	14511.790018767	Sum of GTIs [s]
			ontime6	14511.790018529	Sum of GTIs [s]
			ontime7	14511.790018201	Sum of GTIs [s]
			ontime8	14513.25	Sum of GTIs [s]
			l1events	289527	Number of level 1 events

2.1.4 Events

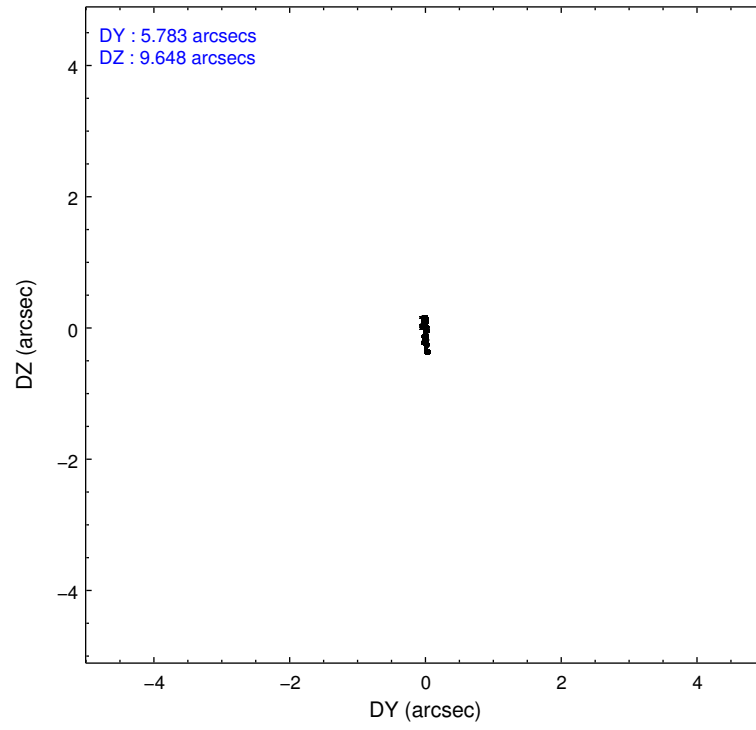
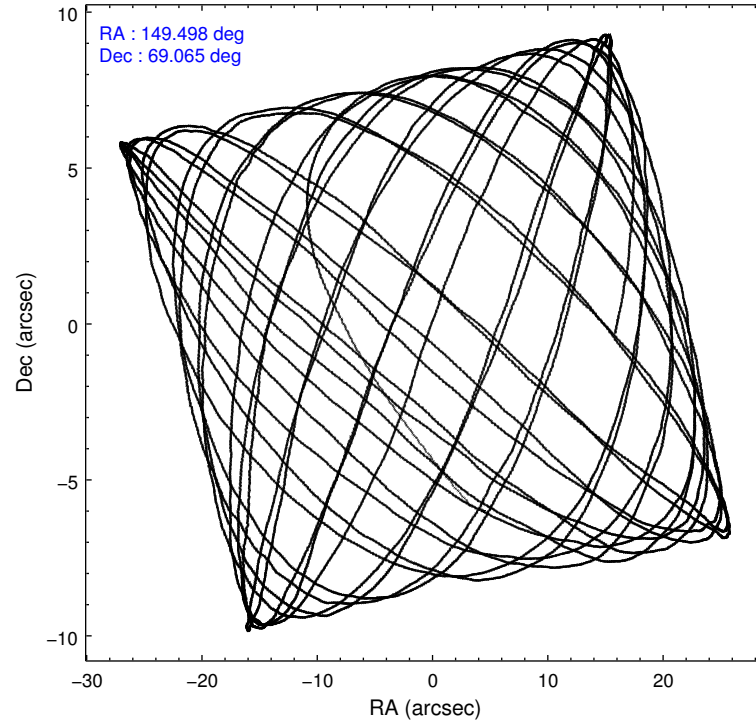
	ccd 2	ccd 3	ccd 5	ccd 6	ccd 7	ccd 8
level 1 events	19062	20054	99178	20826	74606	55801
rejected events	4071	4287	12030	4513	12042	6807
rejected %	21%	21%	12%	21%	16%	12%

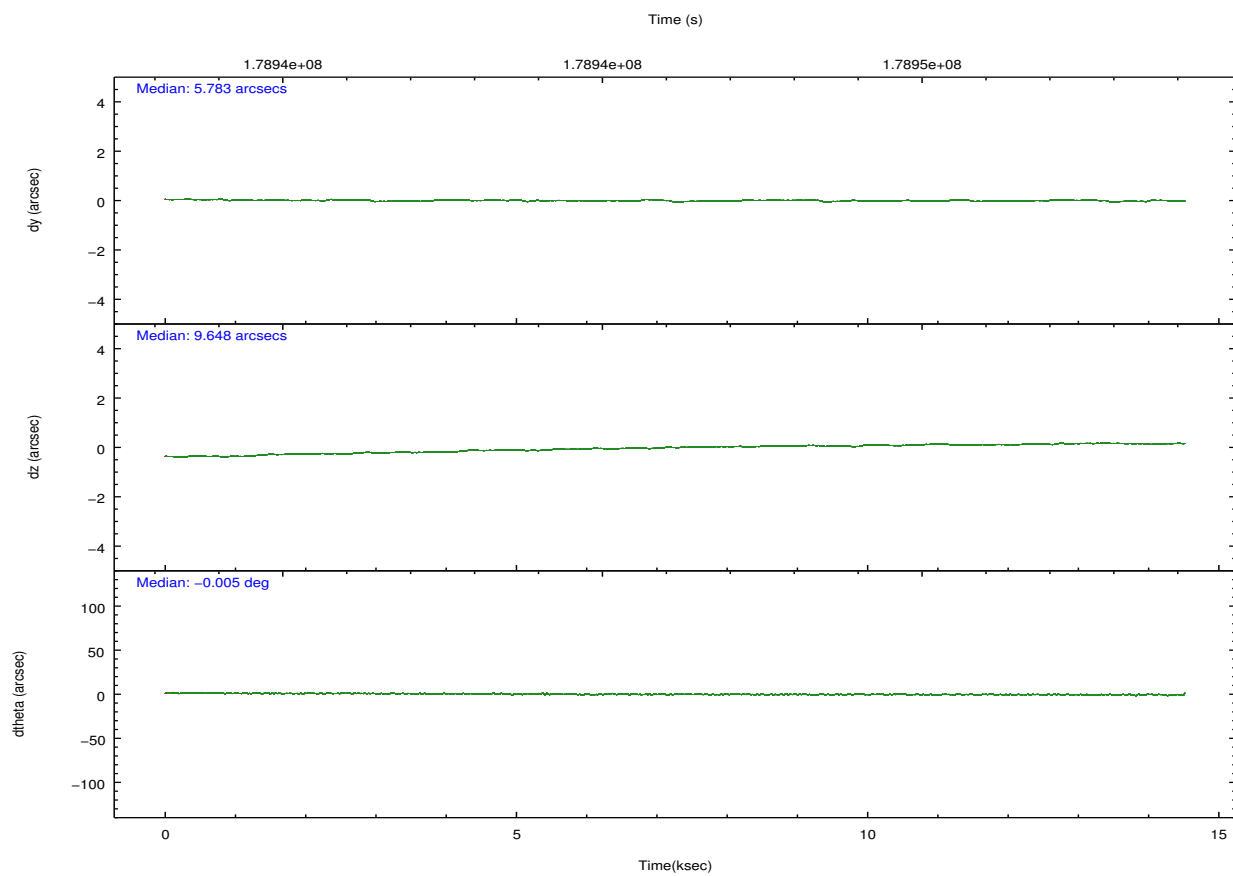
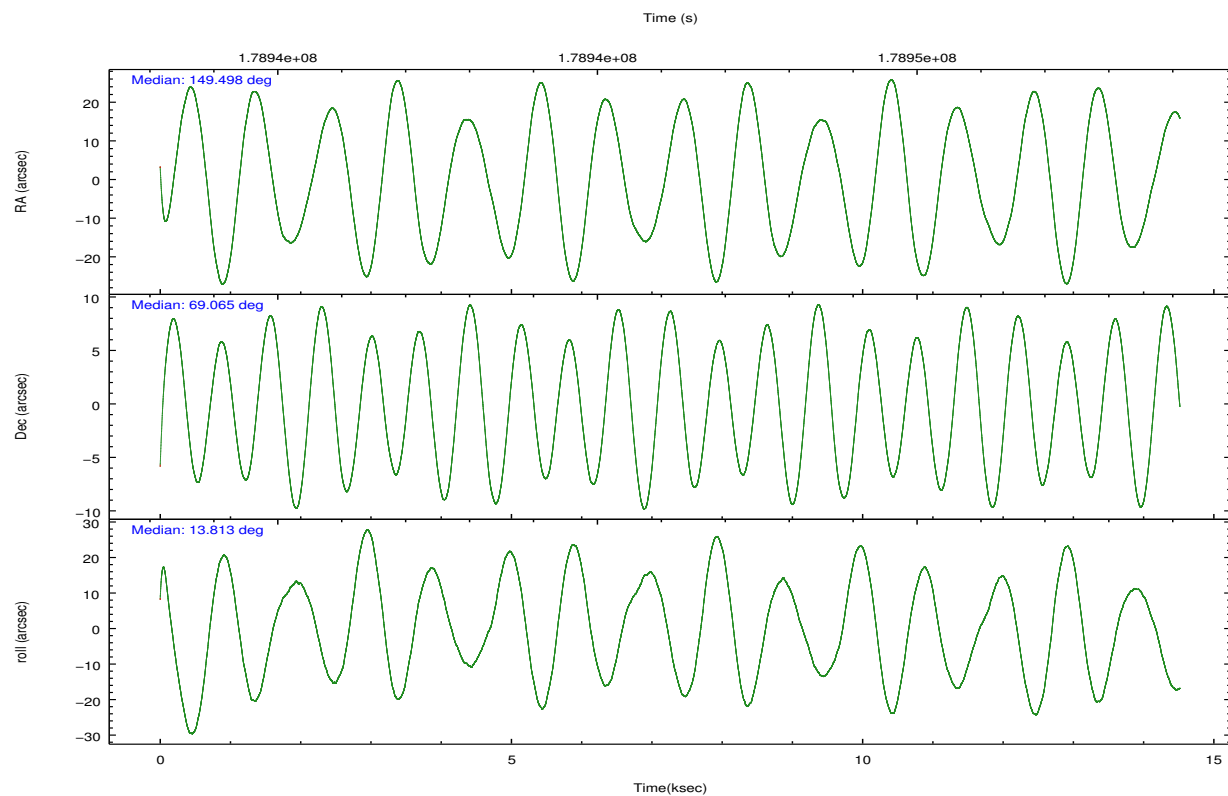
	ccd 2	ccd 3	ccd 5	ccd 6	ccd 7	ccd 8
grade 0 events	2212	2224	23625	1985	7789	18297
	11%	11%	23%	9%	10%	32%
grade 1 events	76	59	125	67	141	163
	0%	0%	0%	0%	0%	0%
grade 2 events	5686	6139	24358	6836	15674	14071
	29%	30%	24%	32%	21%	25%
grade 3 events	2123	2440	1941	2129	5032	4452
	11%	12%	1%	10%	6%	7%
grade 4 events	2192	2117	1907	2014	4993	4288
	11%	10%	1%	9%	6%	7%
grade 5 events	3470	3633	8734	3832	9962	5352
	18%	18%	8%	18%	13%	9%
grade 6 events	3303	3442	38488	3963	31015	9178
	17%	17%	38%	19%	41%	16%
grade 7 events	0	0	0	0	0	0
	0%	0%	0%	0%	0%	0%

2.2 Compared Parameters

Parameter	Planned	Actual	Parameter	Planned	Actual
Instrument	ACIS	ACIS	Obspar format version number	7	7
Detector	ACIS-235678	ACIS-235678	Obspar file type	PREDICTED	ACTUAL
Grating	NONE	NONE	Obspar update status	NONE	UPDATED
Data mode	CC33_FAINT	CC33_FAINT	Number of optional ACIS chips dropped	0	0
Observation mode	POINTING	POINTING	On-chip summing requested	N	N
[deg] Pointing RA	149.443613	149.4979411727042	Subarray requested	NONE	NONE
[deg] Pointing Dec	69.045674	69.06483997501681	Alternating exposures requested	N	N
[deg] Pointing Roll	13.716677	13.82257059027623	[s] Primary exposure time	0.000000	0
[mm] SIM focus pos	-0.684267	-0.6828225247311905			
[mm] SIM defocus	0	0.001444936568705701			
[mm] SIM translation stage pos	-190.132523	-190.1400660498719			
[mm] SIM translation stage offset	0	0.00754346686406393			
[s] Observation start time (MET)	178939398.184000	178938269.57555			
Observation start date	2003-09-03T01:22:14	2003-09-03T01:04:29			
[s] Observation end time (MET)	178953398.184000	178954106.85123			
Observation end date	2003-09-03T05:15:34	2003-09-03T05:28:26			
Read mode	CONTINUOUS	CONTINUOUS			

2.3 Aspect



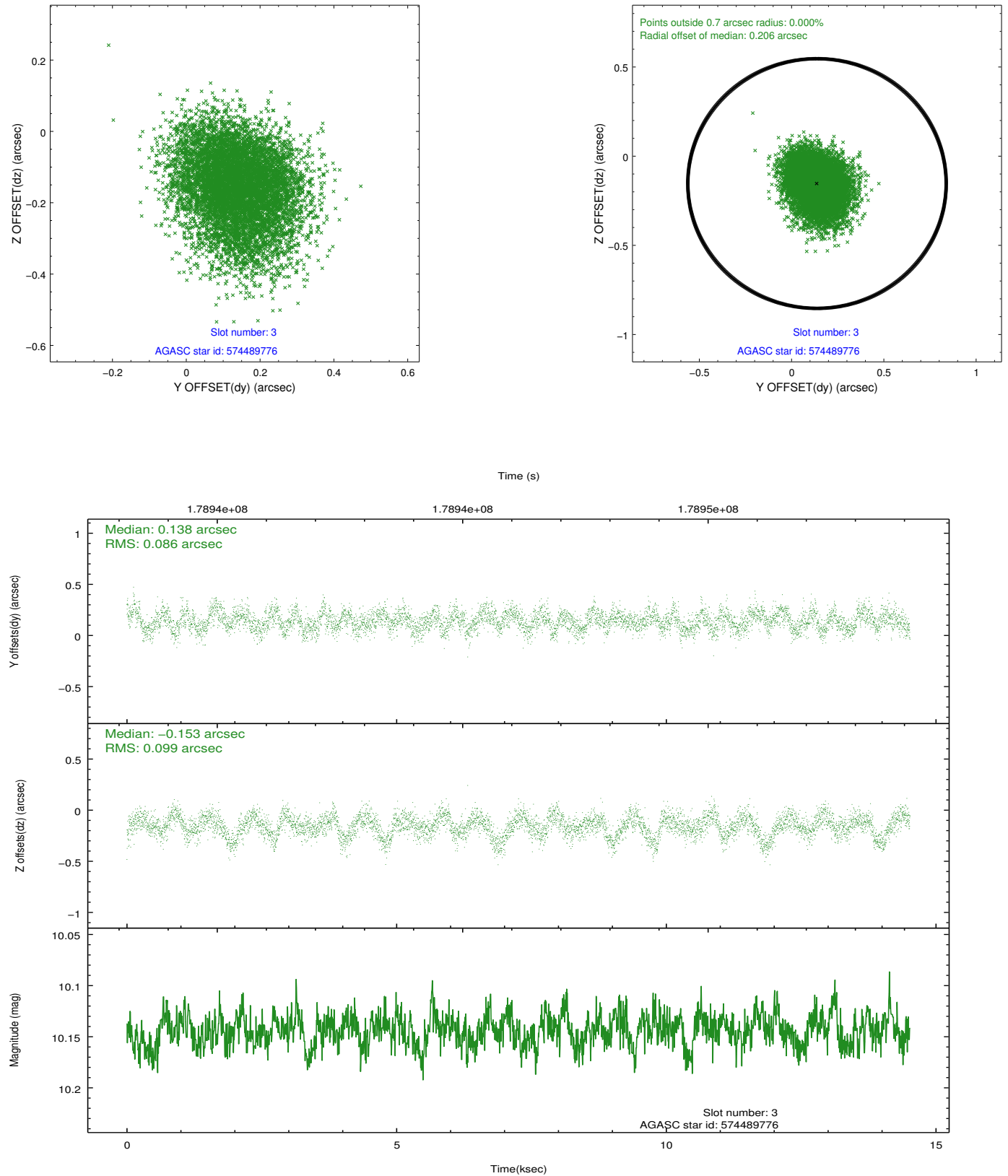


Slot Statistics

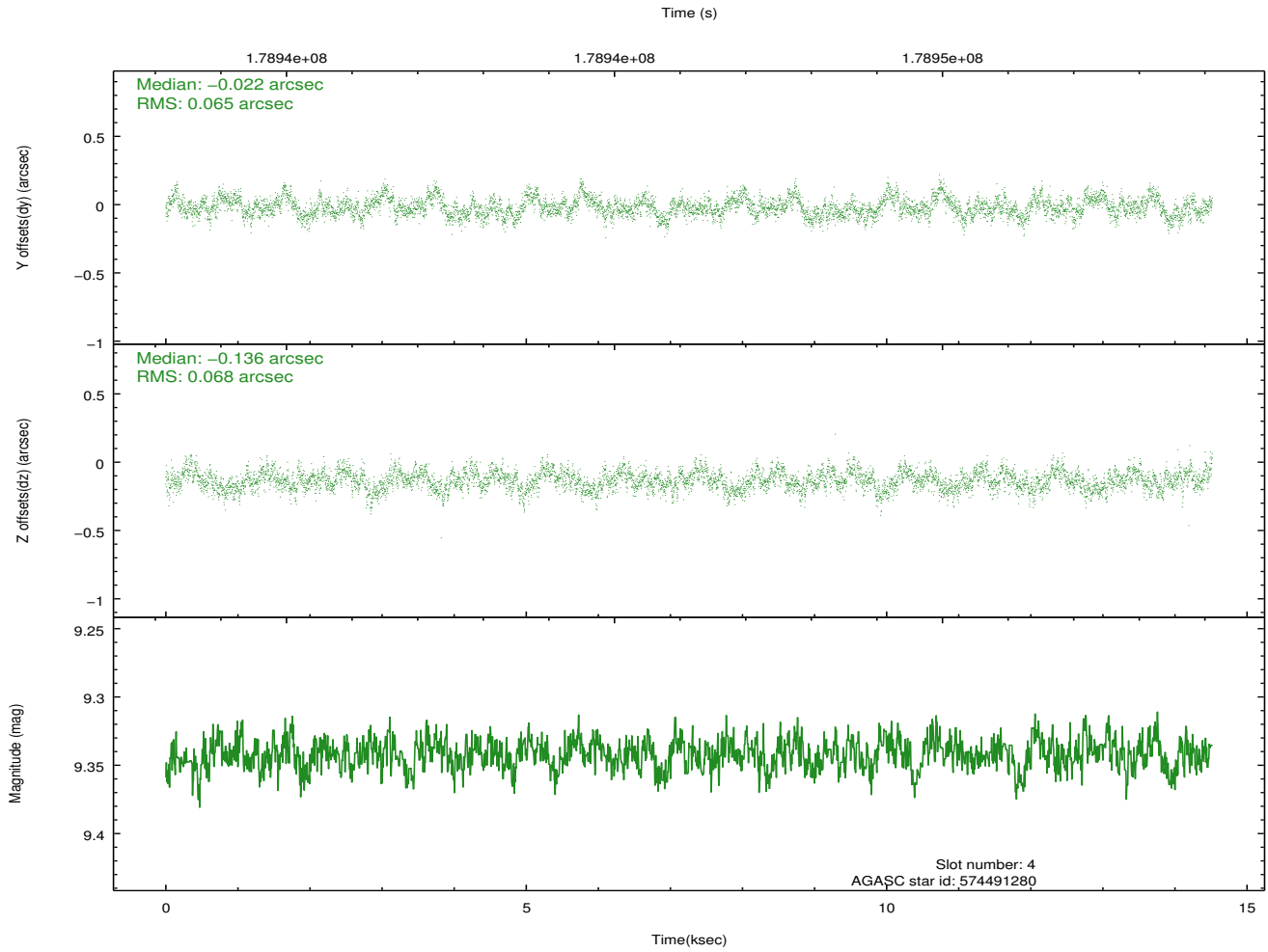
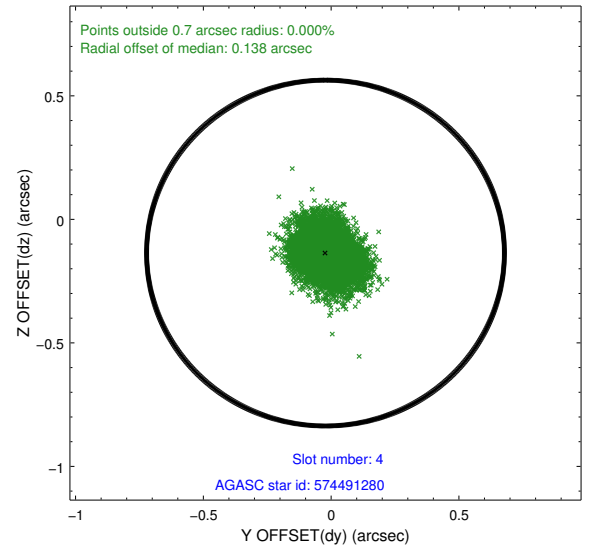
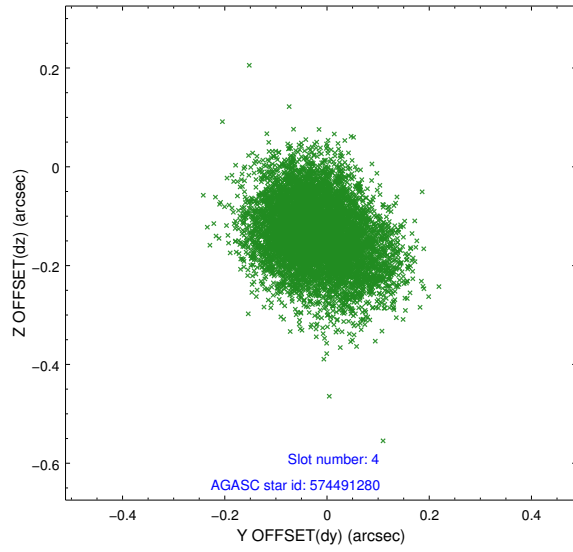
slot	status	id	mag	n_pts	med_dy	med_dz	dr1	dr2	ra	dec	mean_y	mean_z
0	FID	ACIS-S-2	7.09	3541	-0.064	-0.037	0.008	0.012	0.000000	0.000000	-758.55	-1730.88
1	FID	ACIS-S-4	7.20	3541	0.094	0.041	0.005	0.010	0.000000	0.000000	2154.73	177.38
2	FID	ACIS-S-5	7.22	3539	-0.061	0.005	0.007	0.012	0.000000	0.000000	-1811.00	171.34
3	GUIDE	574489776	10.14	7073	0.138	-0.153	0.141	0.227	148.323662	69.046710	-1396.27	358.06
4	GUIDE	574491280	9.34	7081	-0.022	-0.136	0.100	0.162	148.611567	69.450135	-675.27	1670.52
5	GUIDE	574494880	11.17	7006	0.053	0.155	0.210	0.348	149.009874	68.677374	-865.04	-1151.05
6	GUIDE	574496312	10.32	7025	0.029	0.004	0.126	0.209	149.547505	68.718299	-147.15	-1177.01
7	GUIDE	574496360	9.46	7077	-0.200	0.142	0.105	0.171	150.806604	68.529829	1309.47	-2210.21

2.4 Star Slots

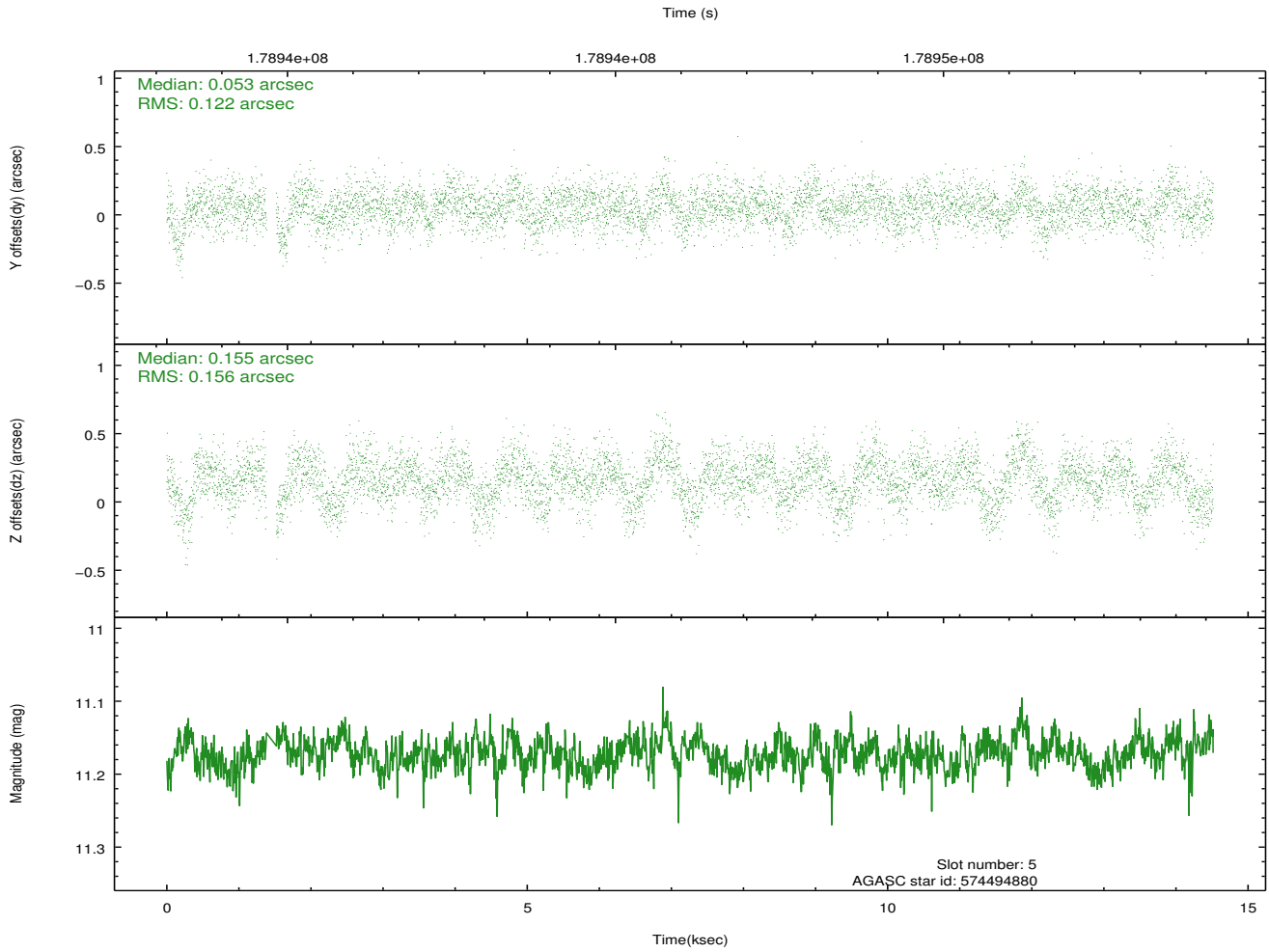
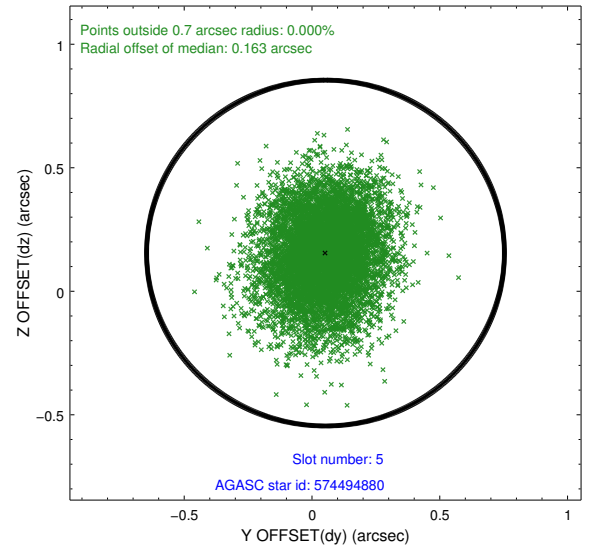
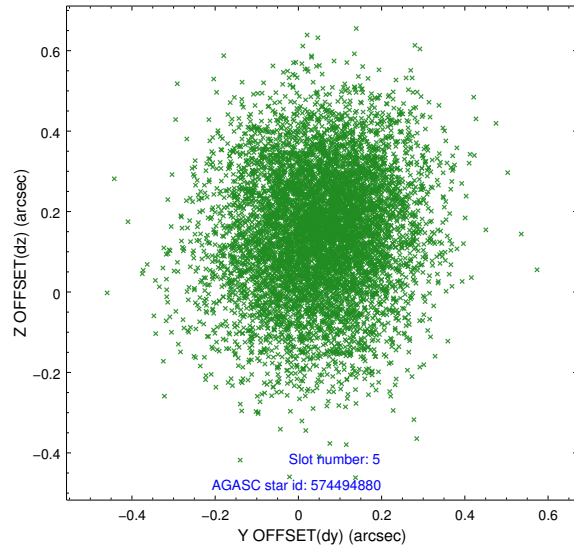
2.4.1 Slot 3



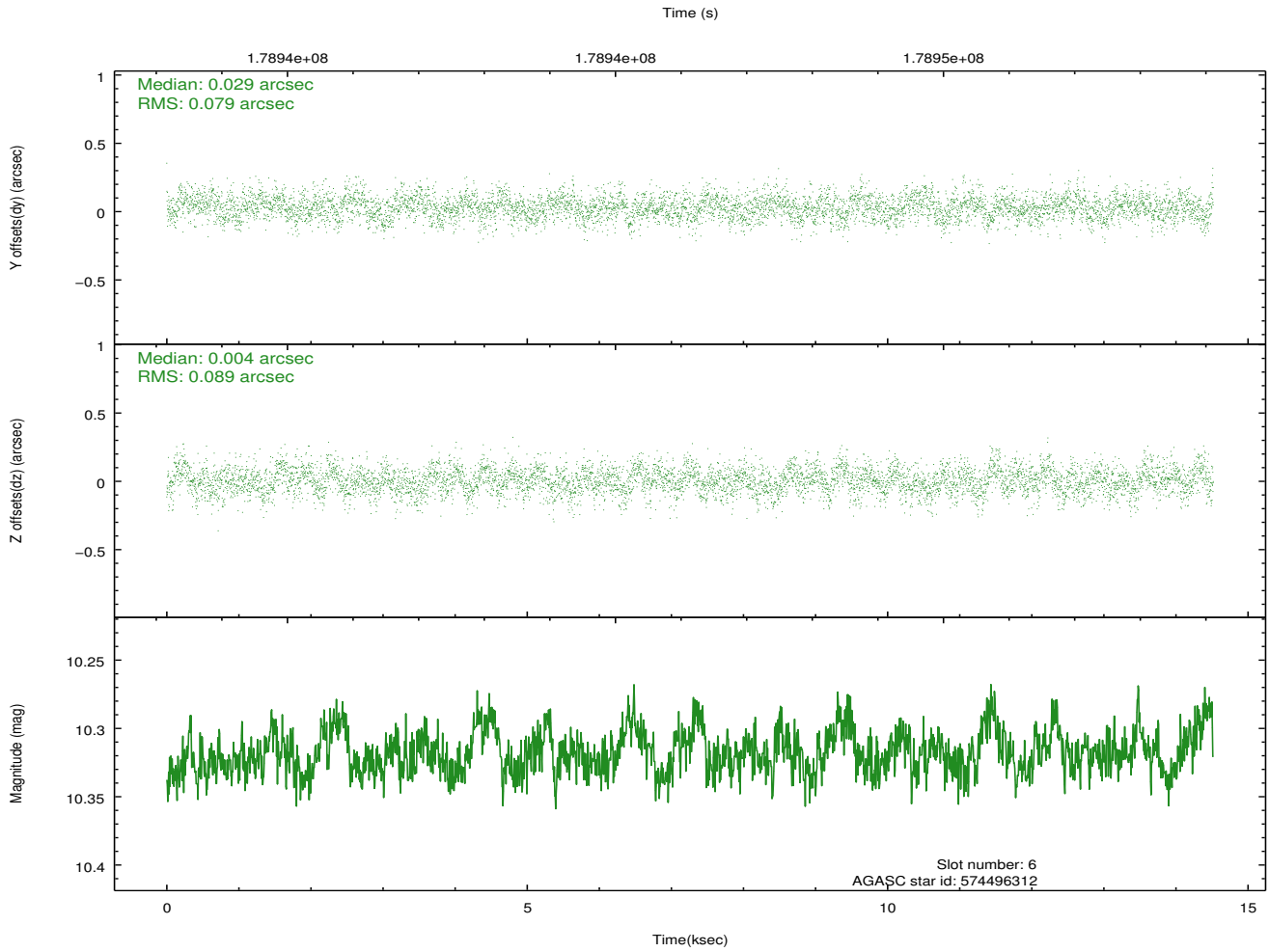
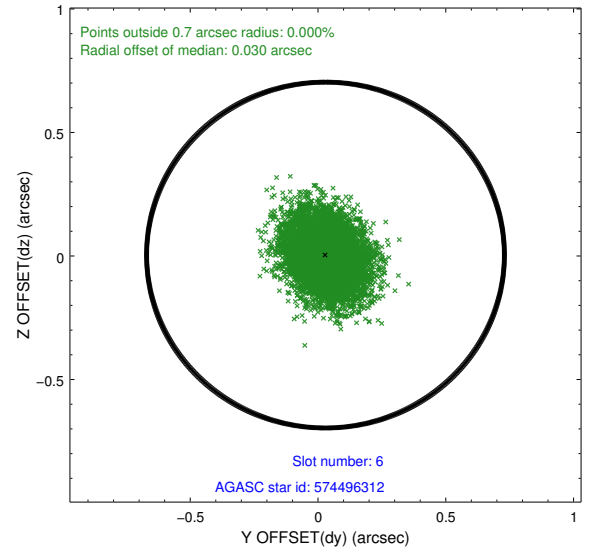
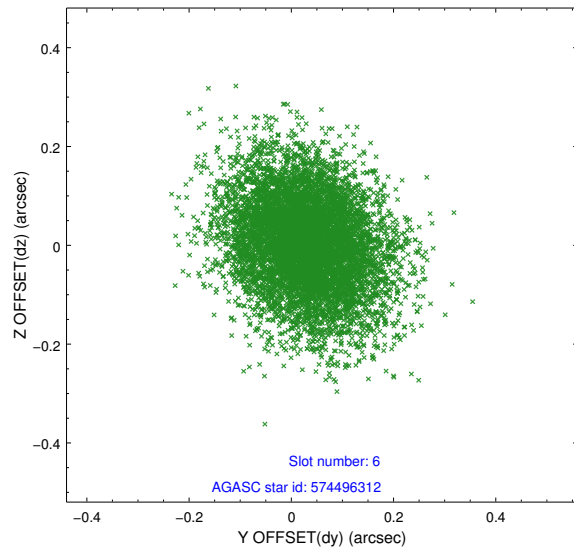
2.4.2 Slot 4



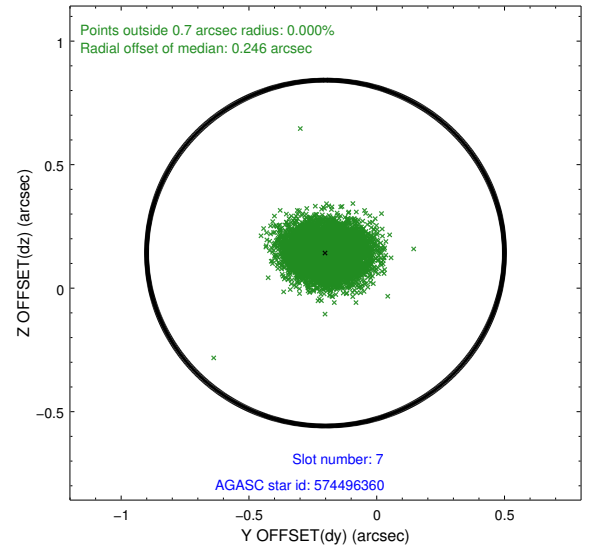
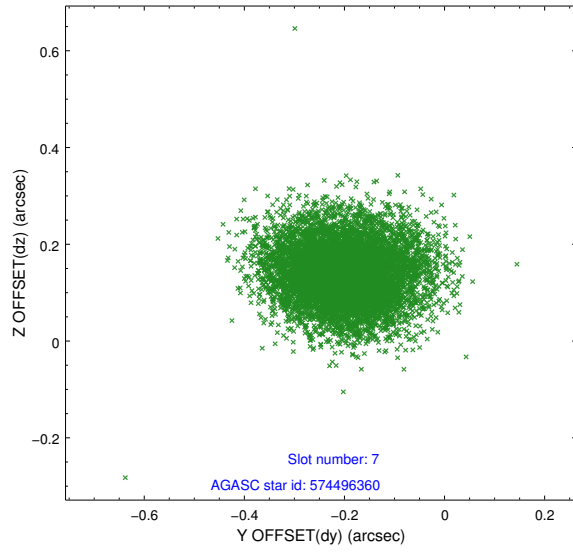
2.4.3 Slot 5



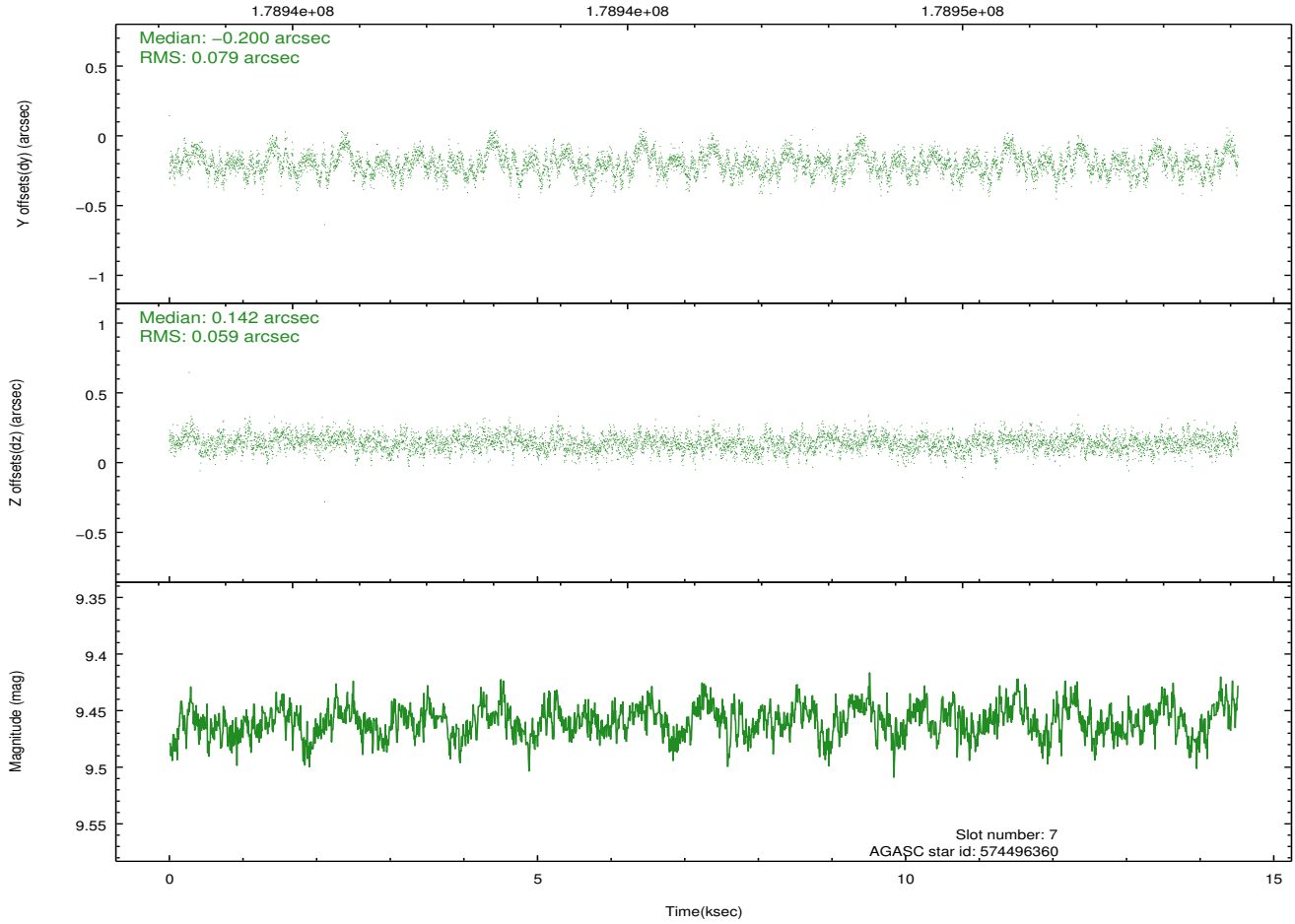
2.4.4 Slot 6



2.4.5 Slot 7

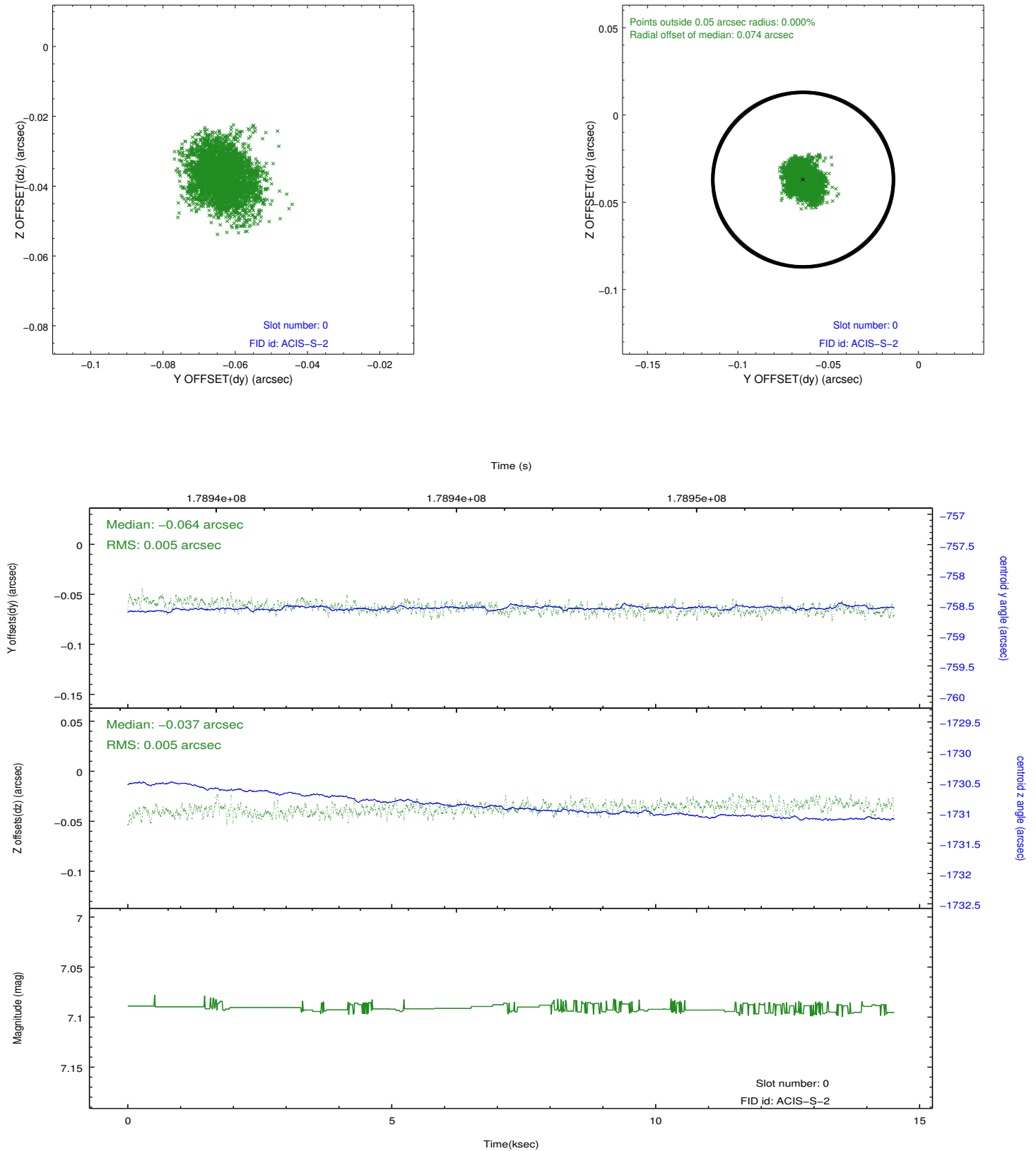


Time (s)

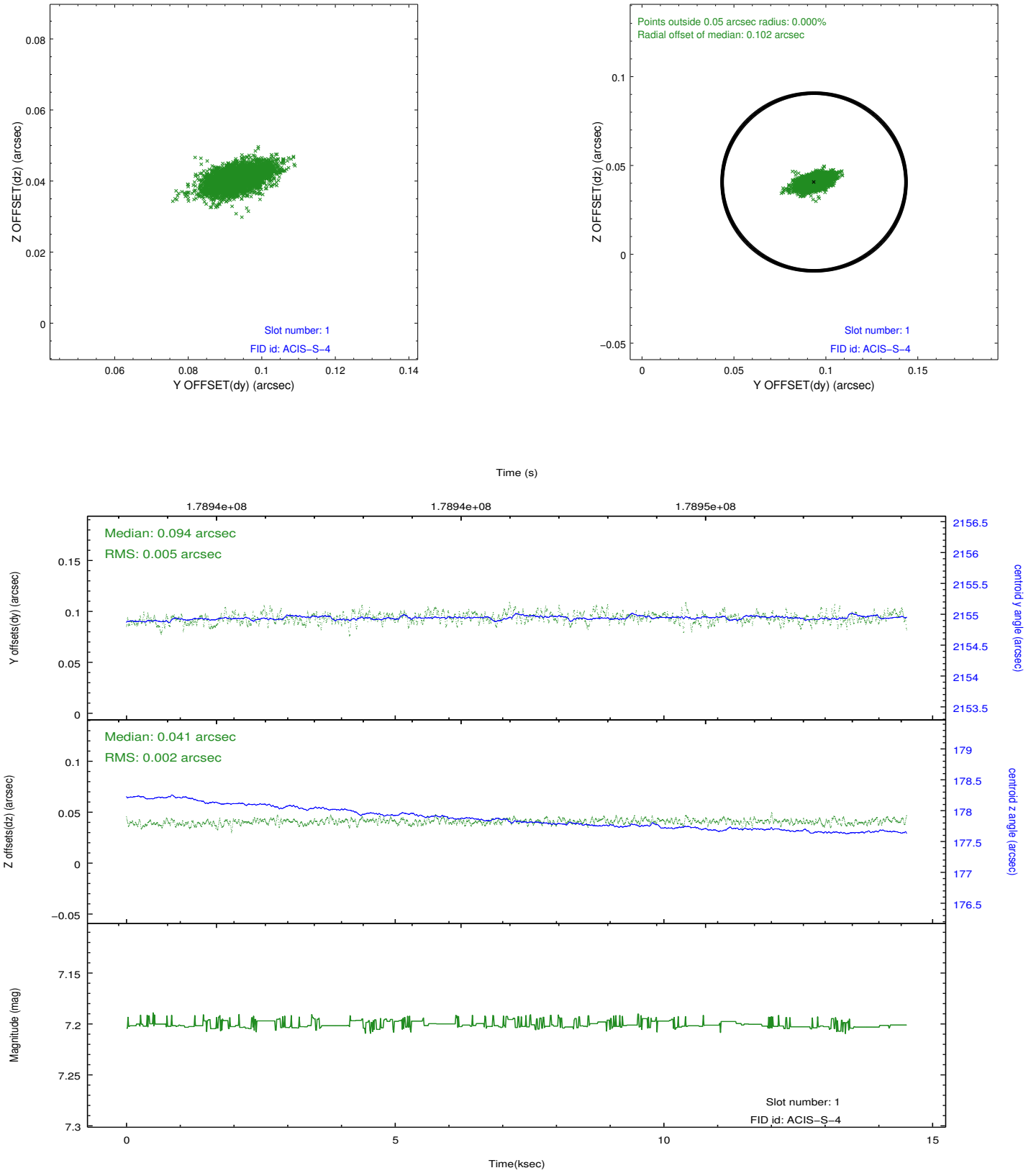


2.5 FID Slots

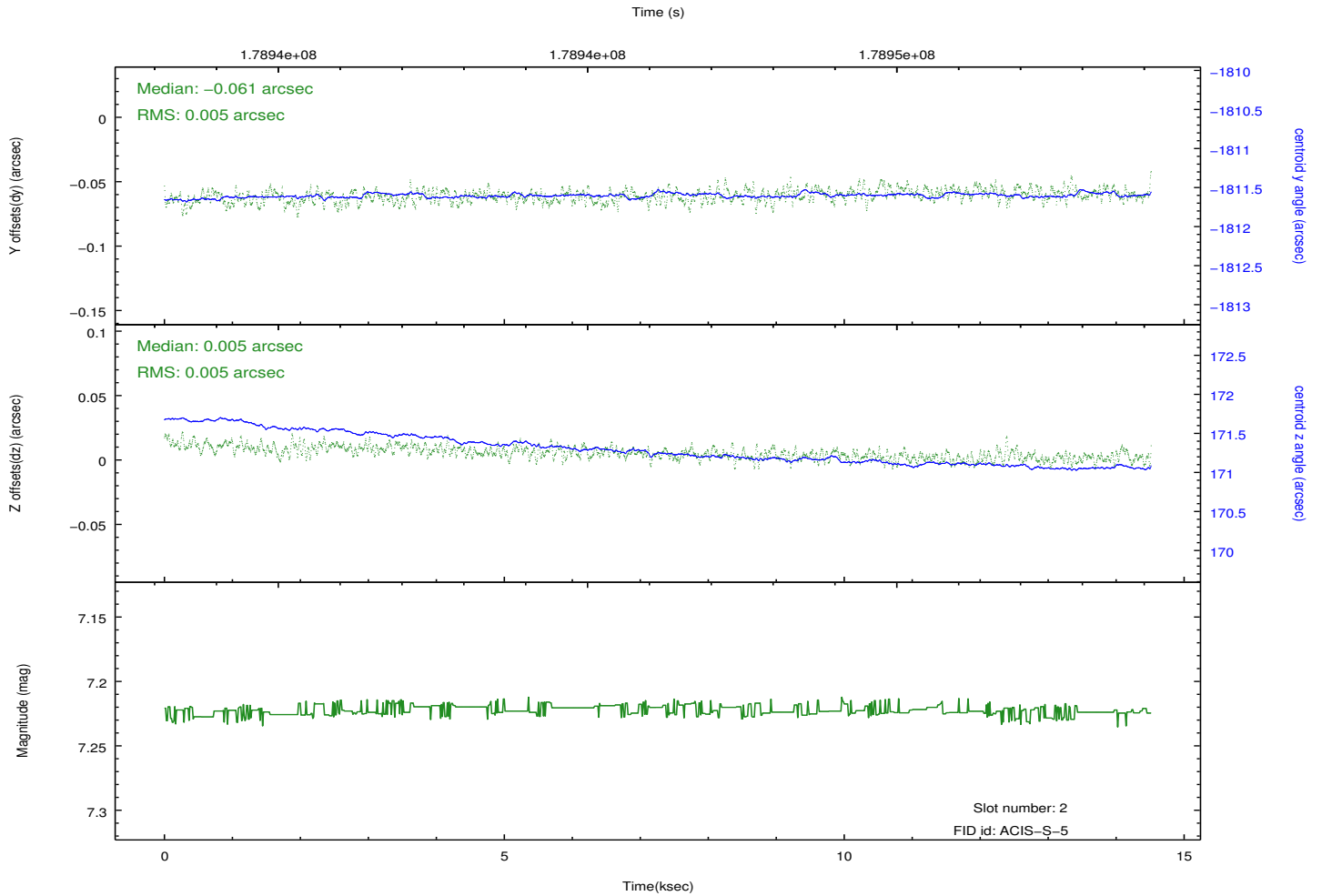
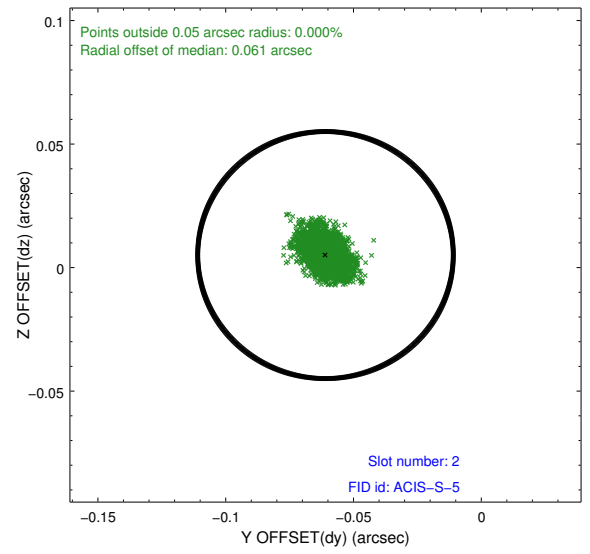
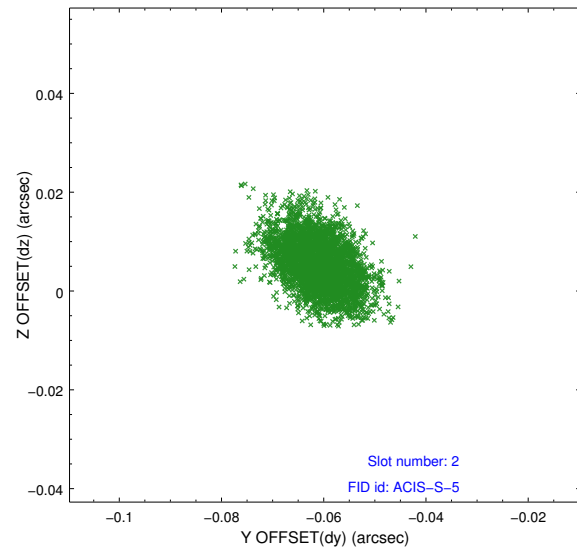
2.5.1 Slot 0



2.5.2 Slot 1



2.5.3 Slot 2



A Summary

A.1 Status

V&V Scientist	Joy Nichols
V&V Date (YYYY-MM-DD)	2012.11.06
V&V Edition	1
V&V Disposition and Status	OK
V&V Charge Time	14.515

A.2 Comments