

V&V Reference Report

L2 ASCDS Version : 7.6.8

Observation 3768 - L2 Version 001
Chandra X-Ray Center

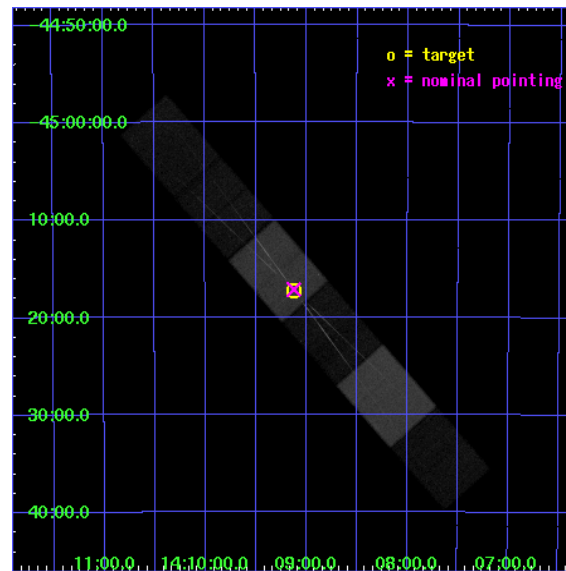
L2 Processing Date : Jul 5 2006

Contents

1	Front	2
2	OBI	3
2.1	OBI	3
2.1.1	Images	3
2.1.2	Bias	3
2.1.3	Parameters	4
2.1.4	Events	4
2.2	Compared Parameters	5
2.3	Aspect	6
2.4	Star Slots	9
2.4.1	Slot 3	9
2.4.2	Slot 4	10
2.4.3	Slot 5	11
2.4.4	Slot 6	12
2.5	FID Slots	13
2.5.1	Slot 0	13
2.5.2	Slot 1	14
2.5.3	Slot 2	15
3	Gratings	16
3.1	HEG Arm	16
3.2	MEG Arm	18
A	Summary	20
A.1	Status	20
A.2	Comments	20

1 Front

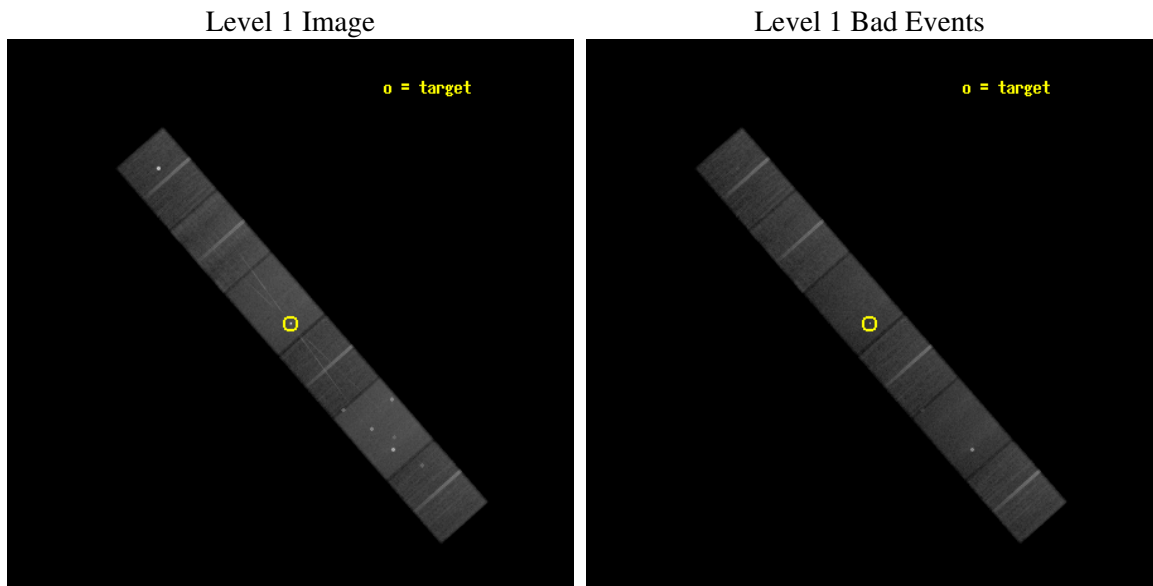
seq_num	300093
obs_id	3768
title	THE ANISOTROPIC TRANSFER OF RESONANCE PHOTONS IN CATAclysmic VARIABLES
observer	DR YUKIKATSU TERADA
object	V834 CENTAURI
dtcycle	0
cycle	P
ra_targ	212.28125
dec_targ	-45.288083
ra_nom	212.28087434378
dec_nom	-45.285864685232
roll_nom	228.6818685369
revision	2
ontime	59892.418019652
livetime	58925.103520263
ontime4	59894.959039718
ontime5	59897.5
ontime6	59894.959039718
ontime7	59892.418019652
ontime8	59894.959039718
ontime9	59894.959039718
l2events	469404



2 OBI

2.1 OBI

2.1.1 Images

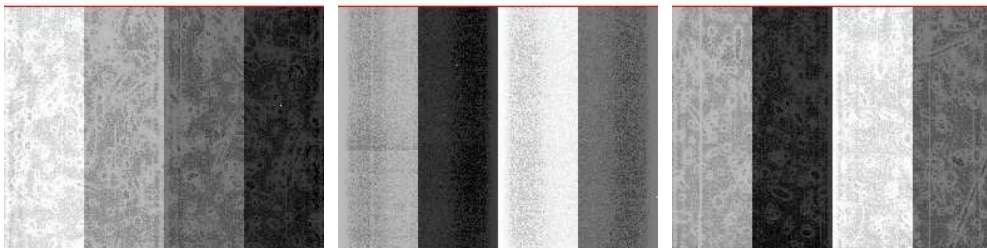


2.1.2 Bias

Chip 4

Chip 5

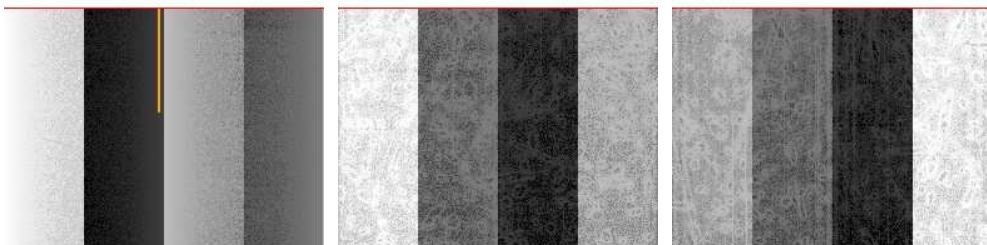
Chip 6



Chip 7

Chip 8

Chip 9



2.1.3 Parameters

obi_num	0
ascdsver	7.6.8
caldsver	3.2.2
date	2006-07-05T08:53:49
revision	2

sched_exp_time	60000.000000
ontime	59896.661088198
ontime4	59899.202108264
ontime5	59901.743068546
ontime6	59899.202108264
ontime7	59896.661088198
ontime8	59899.202108264
ontime9	59899.202108264
l1events	2129194

2.1.4 Events

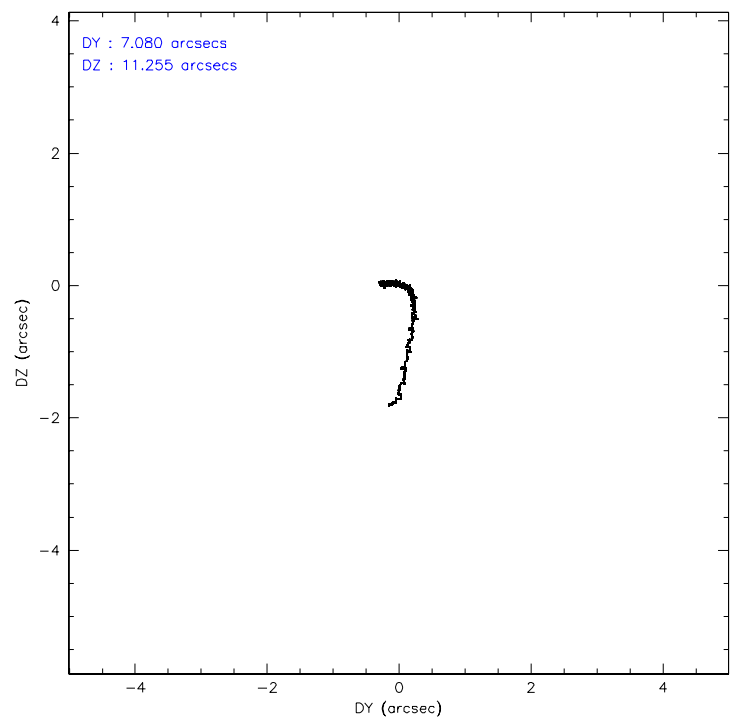
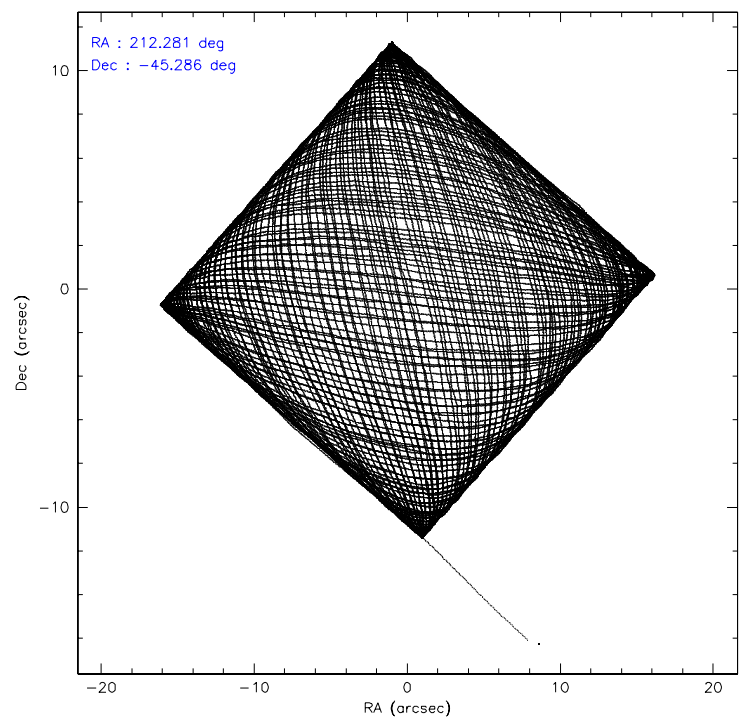
	ccd 4	ccd 5	ccd 6	ccd 7	ccd 8	ccd 9
level 1 events	316514	433106	296165	407947	365373	310089
rejected events	279091	238222	254822	238575	287324	251691
rejected %	88%	55%	86%	58%	78%	81%

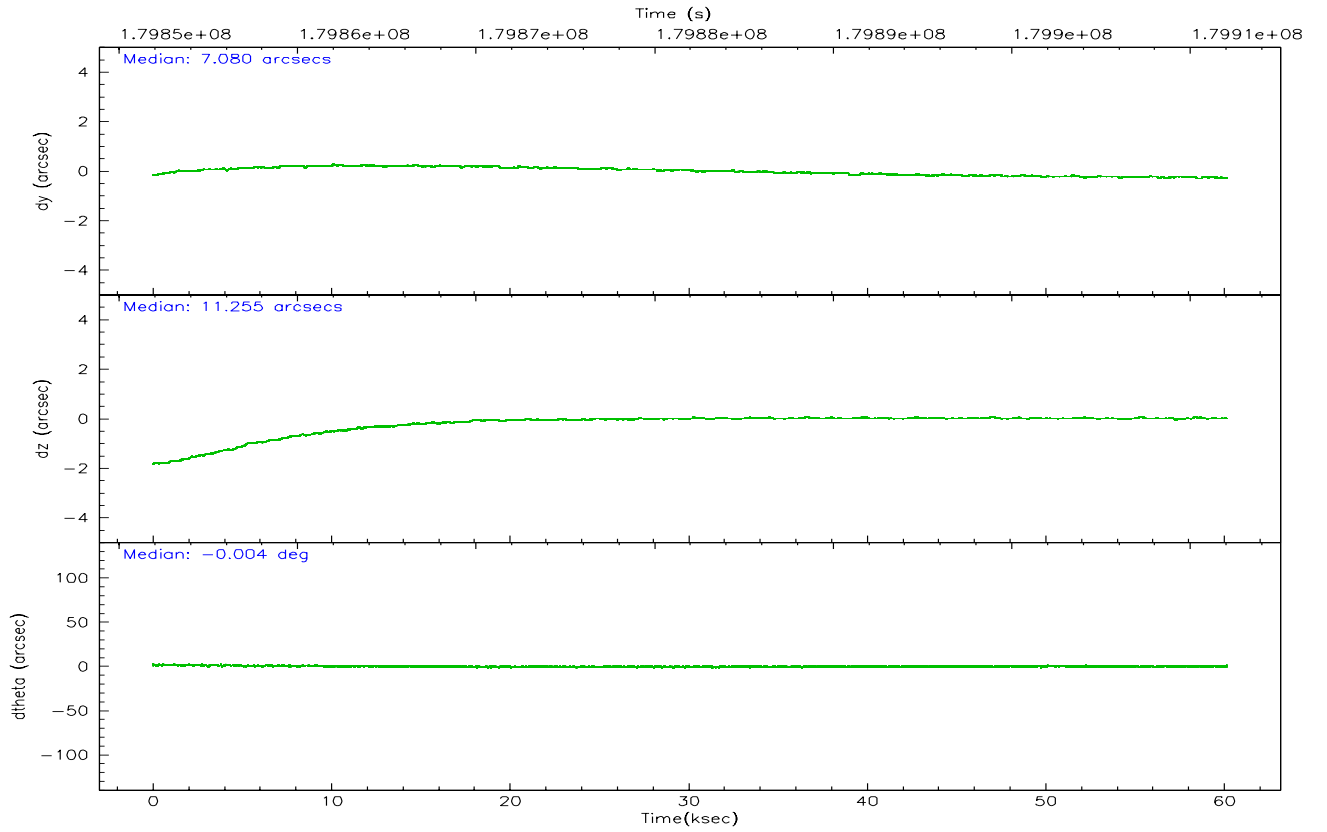
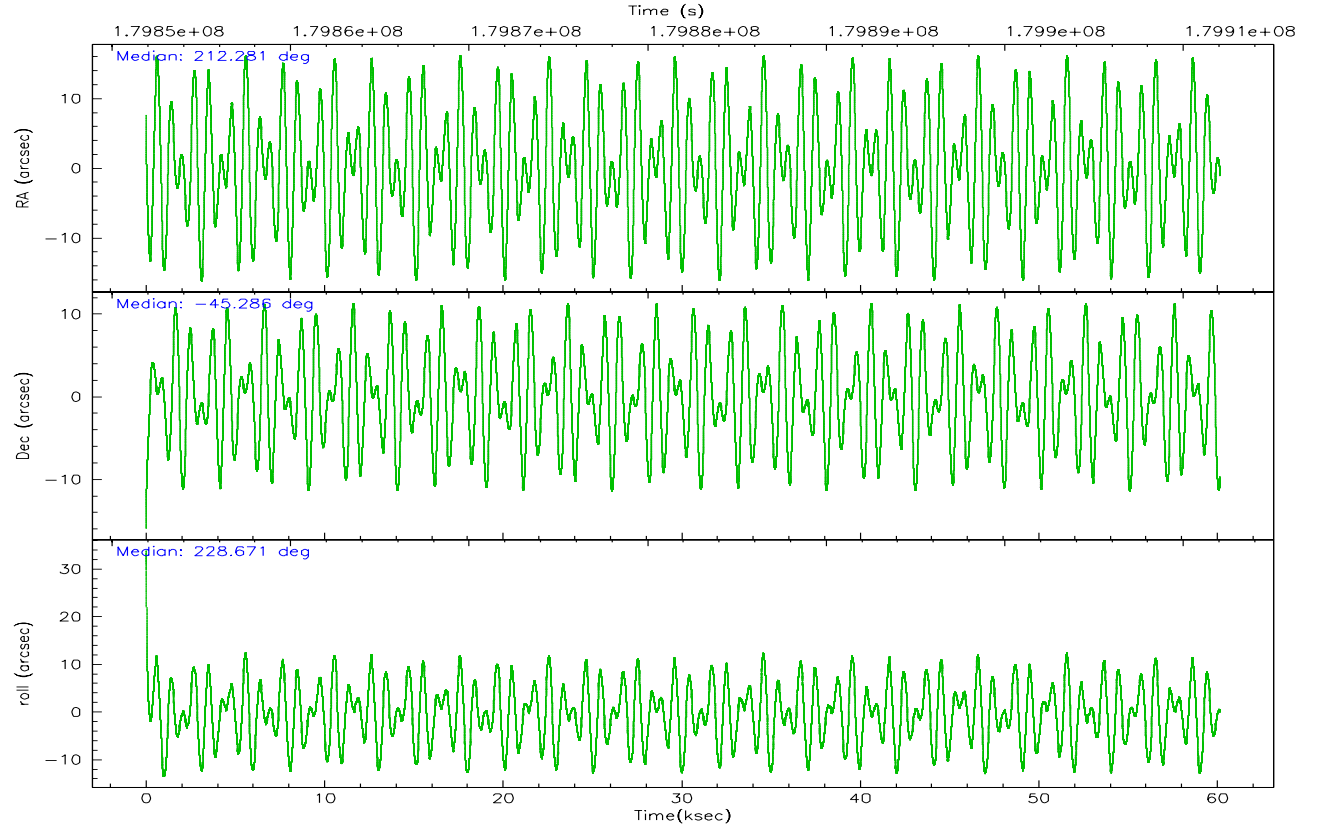
	ccd 4	ccd 5	ccd 6	ccd 7	ccd 8	ccd 9
grade 0 events	16914	24506	18693	15884	24943	14344
	5%	5%	6%	3%	6%	4%
grade 1 events	203	5468	113	833	215	115
	0%	1%	0%	0%	0%	0%
grade 2 events	7430	55915	7805	40469	16698	29729
	2%	12%	2%	9%	4%	9%
grade 3 events	3790	5105	3957	10315	8370	3818
	1%	1%	1%	2%	2%	1%
grade 4 events	3630	4853	3774	9863	7831	3657
	1%	1%	1%	2%	2%	1%
grade 5 events	11981	20659	12691	27768	16583	13343
	3%	4%	4%	6%	4%	4%
grade 6 events	5660	104511	7115	92862	20210	6854
	1%	24%	2%	22%	5%	2%
grade 7 events	266906	212089	242017	209953	270523	238229
	84%	48%	81%	51%	74%	76%

2.2 Compared Parameters

Parameter	Planned	Actual	Parameter	Planned	Actual
Instrument	ACIS	ACIS	Obspar format version number	6	6
Detector	ACIS-456789	ACIS-456789	Obspar file type	PREDICTED	ACTUAL
Grating	HETG	HETG	Obspar update status	NONE	UPDATED
Data mode	FAINT	FAINT	On-chip summing requested	N	N
Observation mode	POINTING	POINTING	Subarray requested	CUSTOM	CUSTOM
Pointing RA	212.287939	212.2808743437765	Subarray start row	1	1
Pointing Dec	-45.259105	-45.28586468523181	Subarray row count	774	774
Pointing Roll	228.530256	228.6818685369047	Alternating exposures requested	N	N
SIM focus pos (mm)	-0.684267	-0.6828225247311905	Primary exposure time	0.000000	2.5
SIM defocus (mm)	0	0.001444936568705701			
SIM translation stage pos (mm)	-187.132523	-187.1228876879999			
SIM translation stage offset (mm)	-3	-3.009634895007935			
Observation start time	179852063.184000	179851096.68967			
Observation start date	2003-09-13T14:53:19	2003-09-13T14:38:16			
Observation end time	179912063.184000	179912895.99232			
Observation end date	2003-09-14T07:33:19	2003-09-14T07:48:15			
Read mode	TIMED	TIMED			

2.3 Aspect



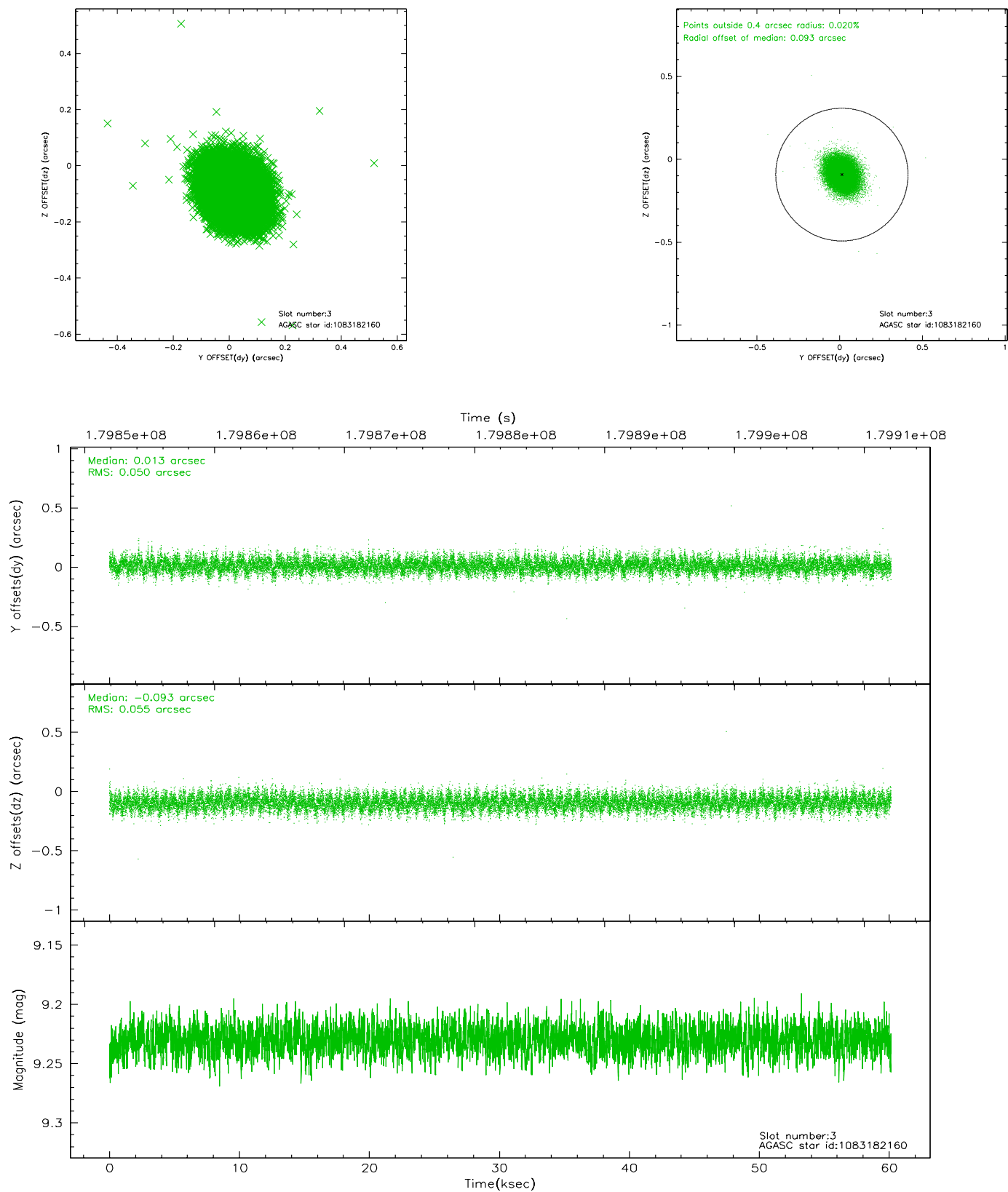


Slot Statistics

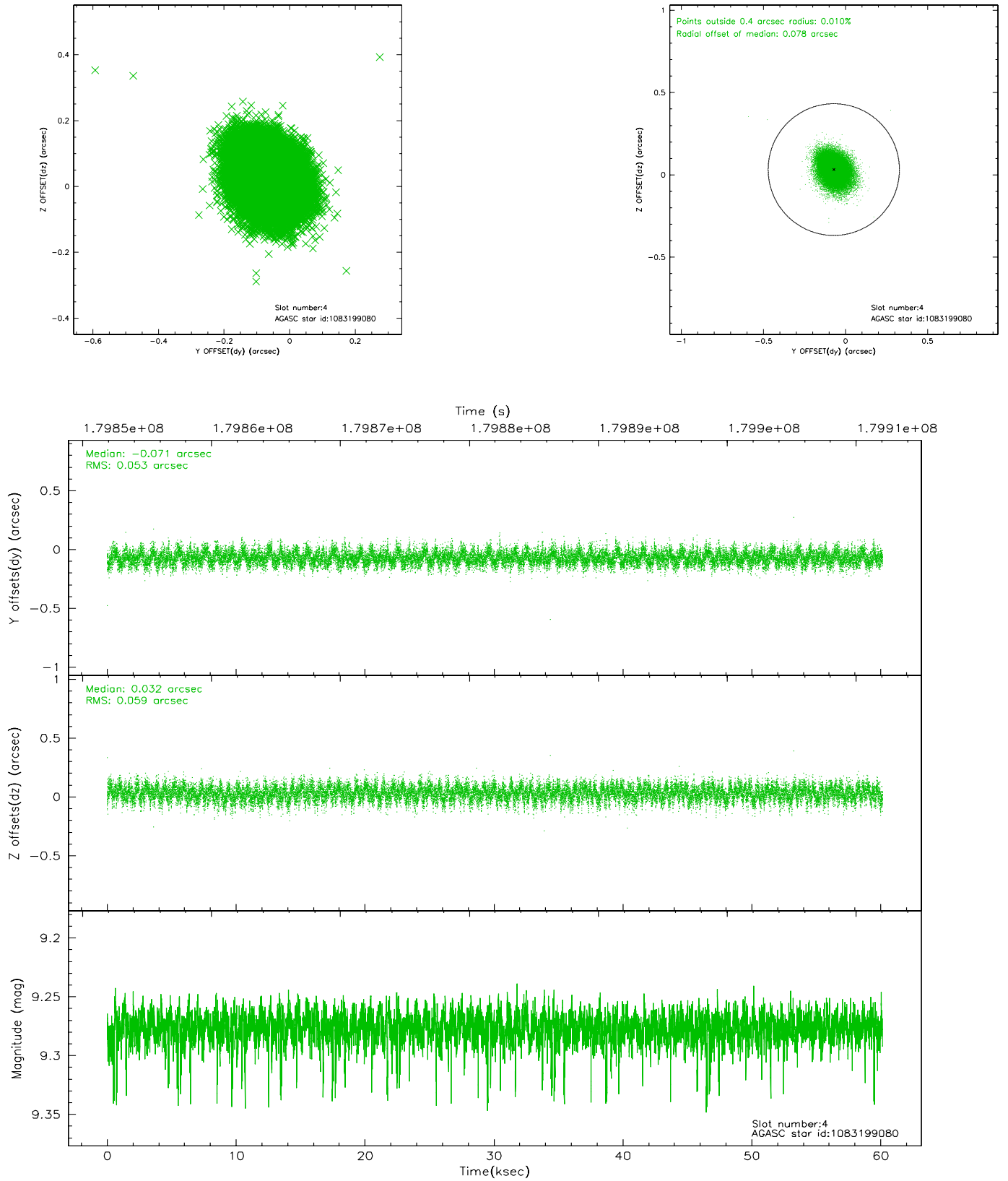
slot	status	id	mag	n_pts	med_dy	med_dz	dr1	dr2	ra	dec	mean_y	mean_z
0	FID	ACIS-S-2	7.09	14674	-0.065	-0.031	0.007	0.023	0.000000	0.000000	-759.68	-1794.48
1	FID	ACIS-S-4	7.19	14673	0.037	0.048	0.009	0.016	0.000000	0.000000	2153.71	114.12
2	FID	ACIS-S-6	7.37	14673	-0.000	-0.010	0.009	0.015	0.000000	0.000000	402.31	751.41
3	GUIDE	1083182160	9.23	29338	0.013	-0.093	0.079	0.128	211.377659	-45.046067	969.15	-2233.90
4	GUIDE	1083199080	9.28	29320	-0.071	0.032	0.084	0.136	213.078974	-45.500828	-662.59	2078.29
5	GUIDE	1083207360	8.03	29346	0.086	0.109	0.077	0.119	212.545497	-45.913813	1339.64	2045.48
6	GUIDE	1024345992	9.49	29330	-0.024	-0.045	0.093	0.151	211.622712	-44.790041	-133.82	-2387.01
7	MONITOR		0.00	0	0.000	0.000	0.000	0.000	0.000000	0.000000	0.00	0.00

2.4 Star Slots

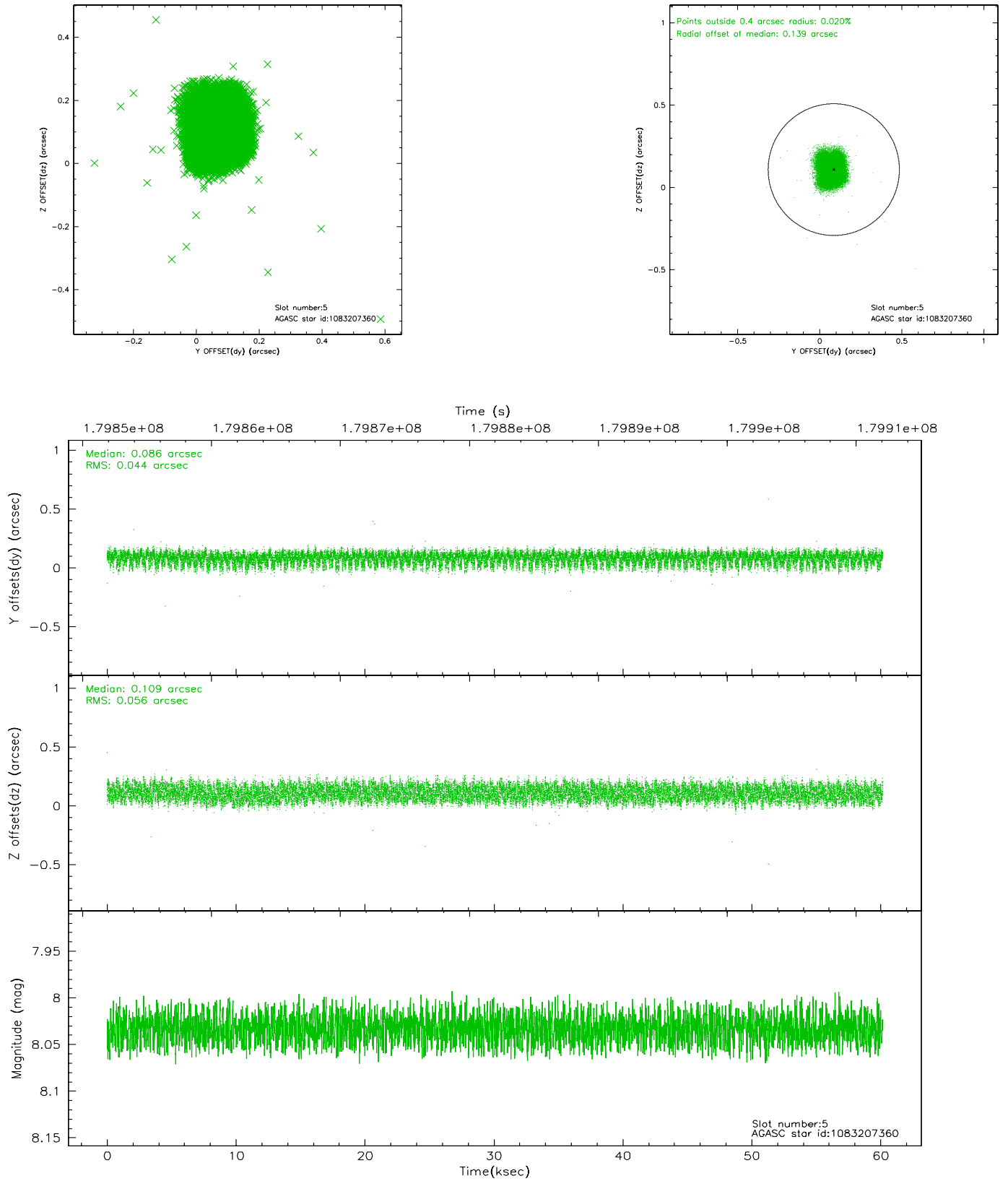
2.4.1 Slot 3



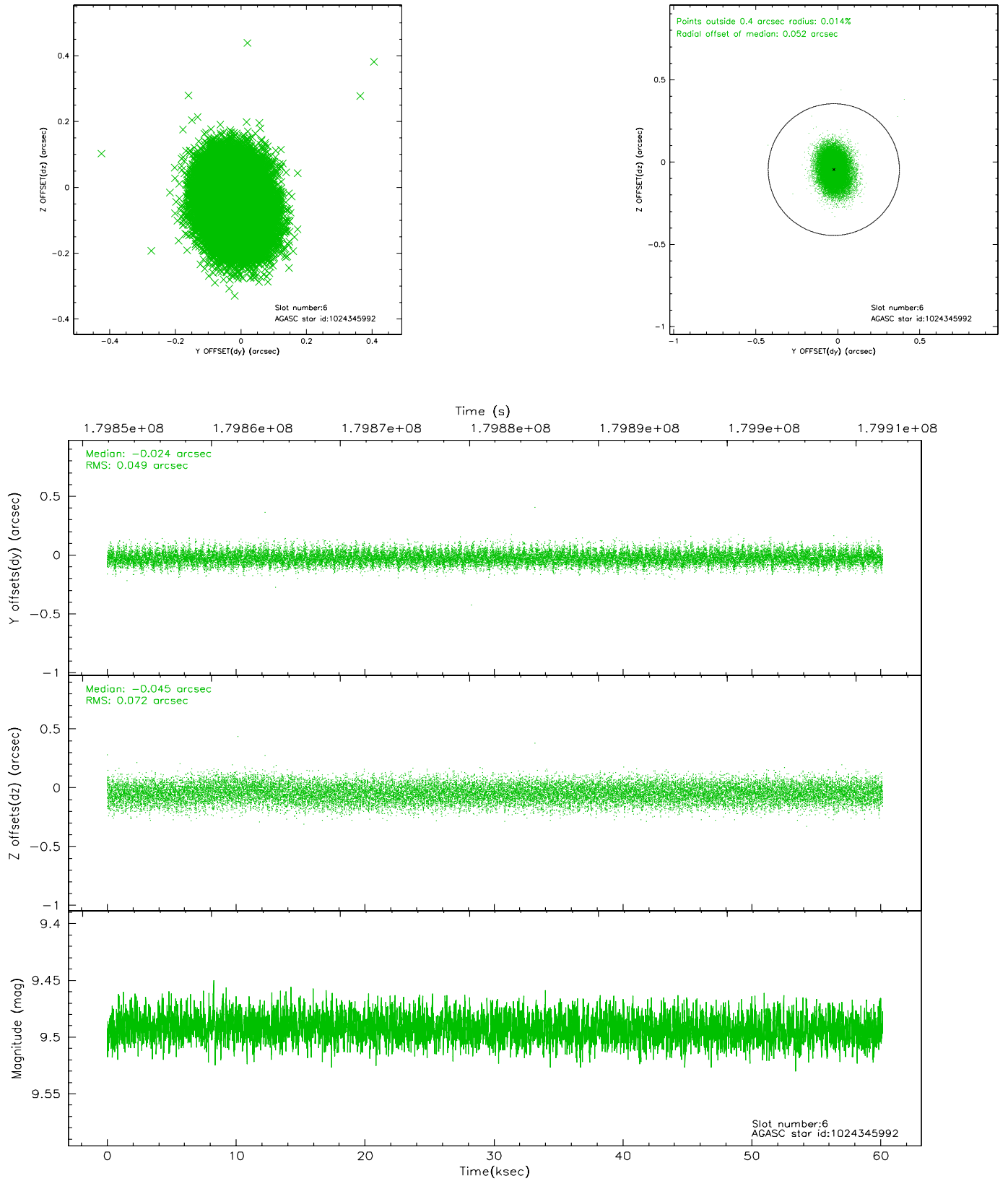
2.4.2 Slot 4



2.4.3 Slot 5

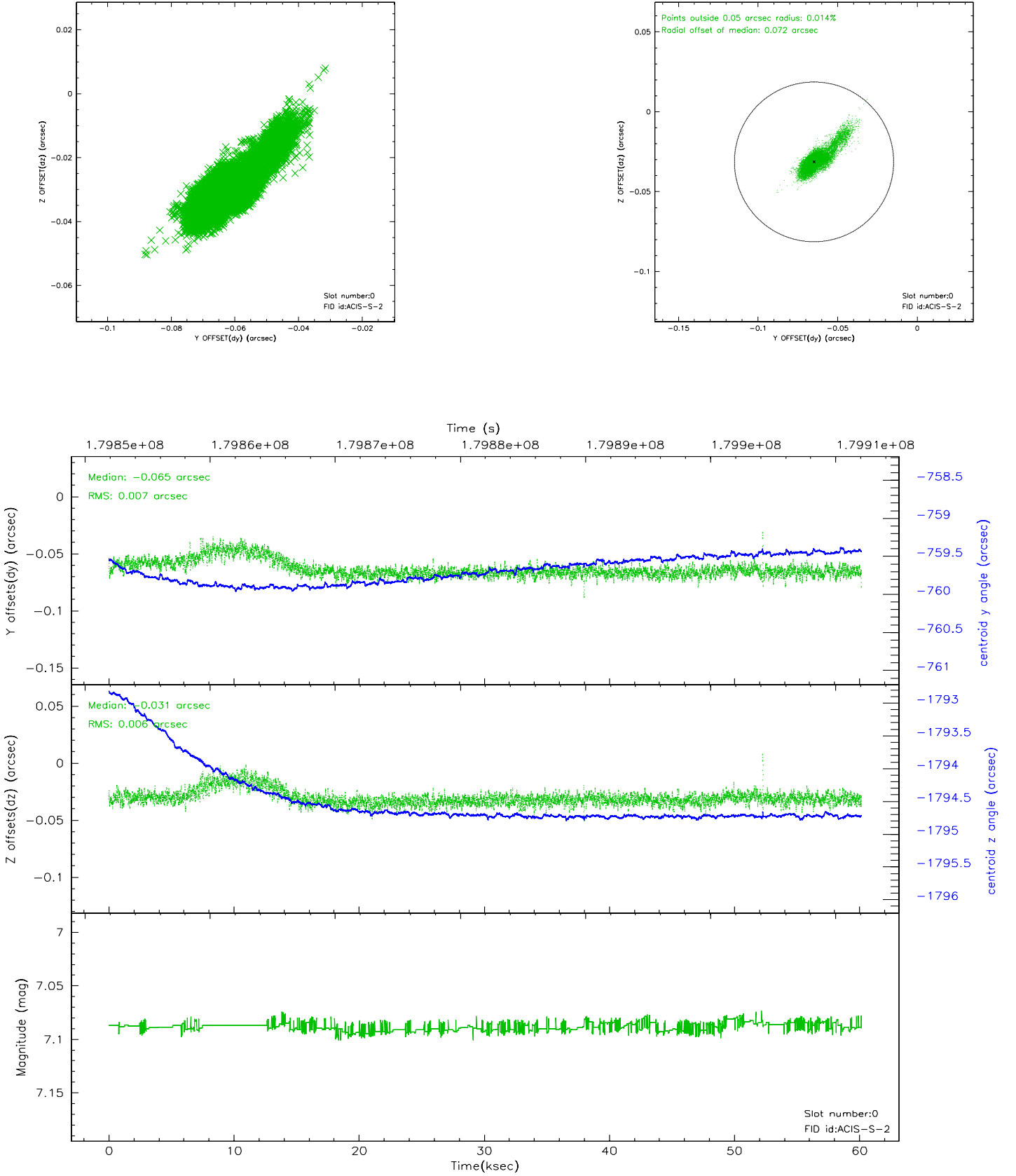


2.4.4 Slot 6

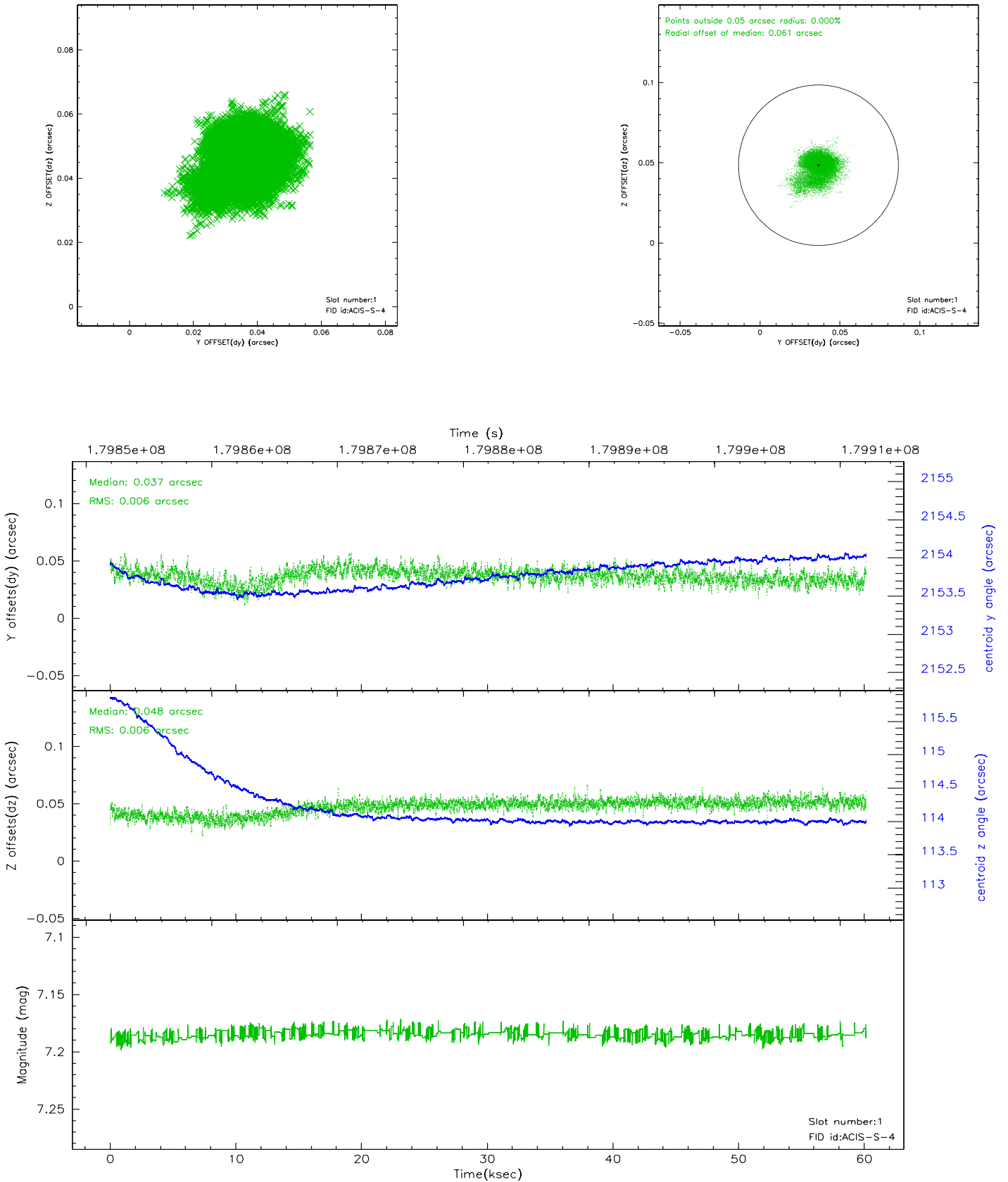


2.5 FID Slots

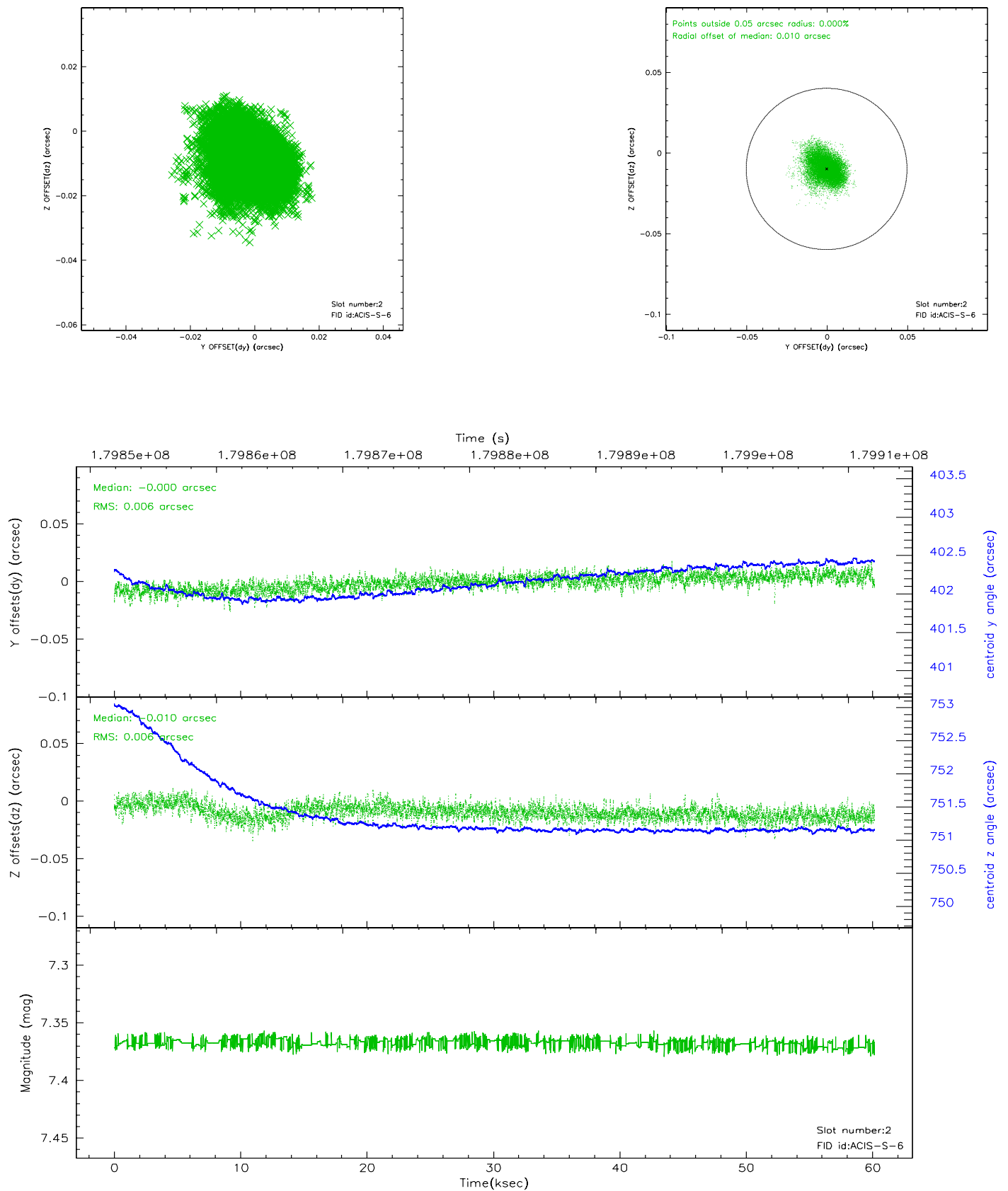
2.5.1 Slot 0



2.5.2 Slot 1

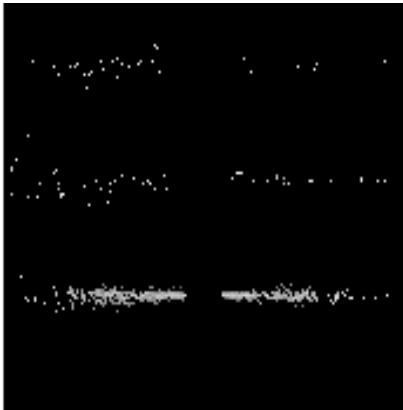


2.5.3 Slot 2

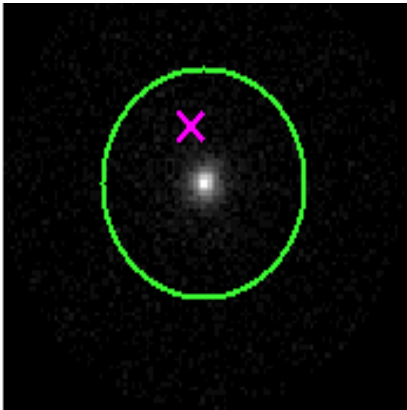


3 Gratings

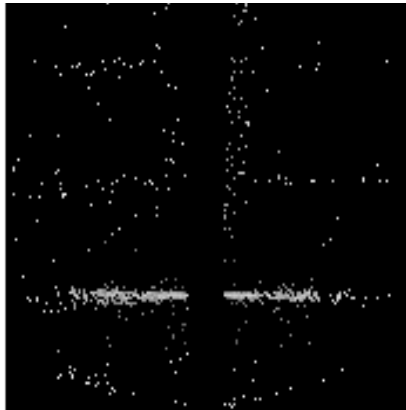
3.1 HEG Arm



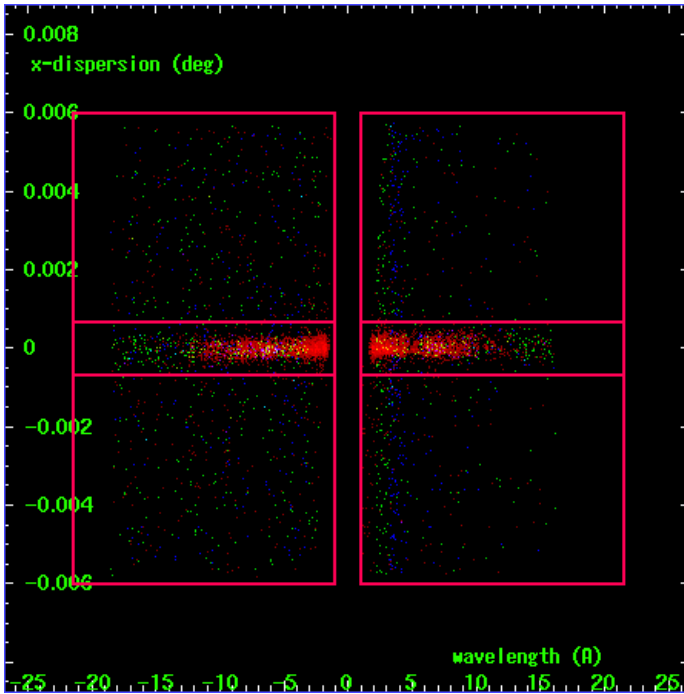
HEG Order Sort 123



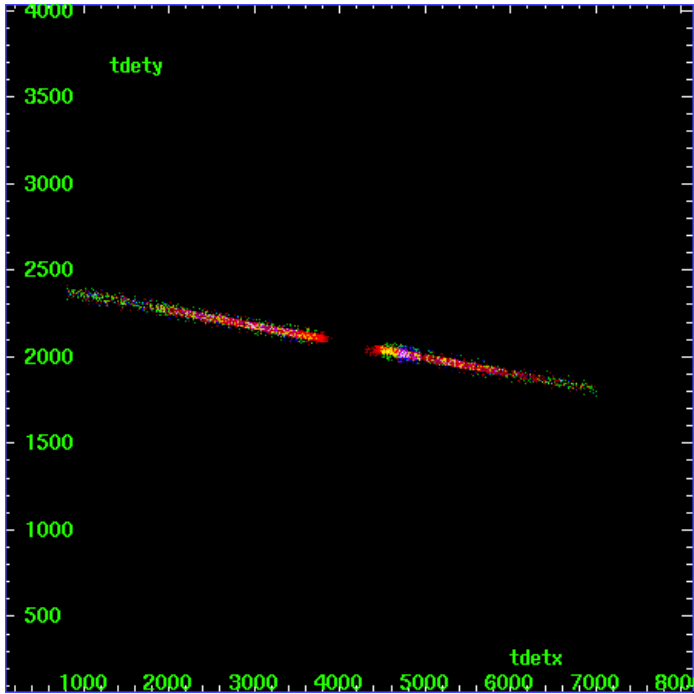
HEG Zero Order



HEG Order Sort ALL

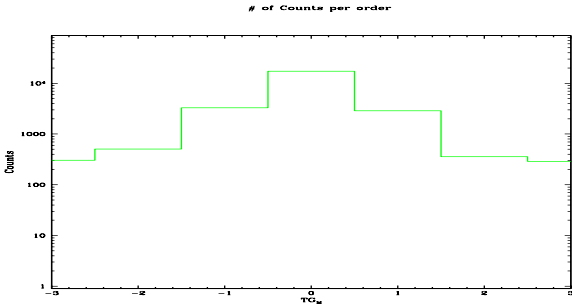


Spot Image HEG

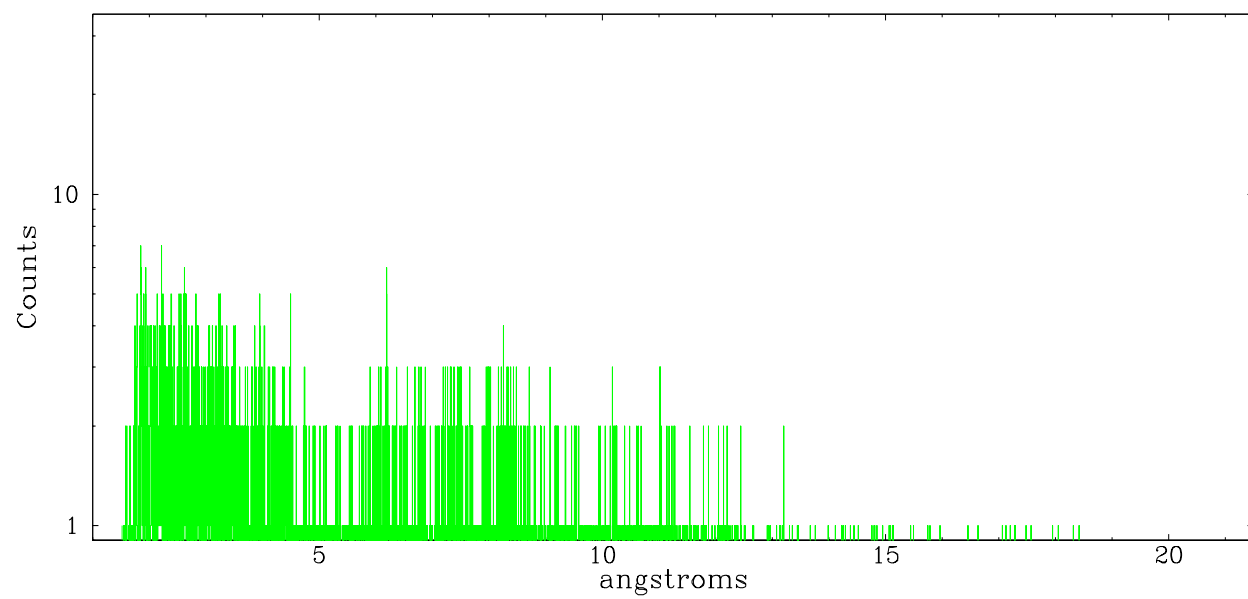


Full Detector HEG

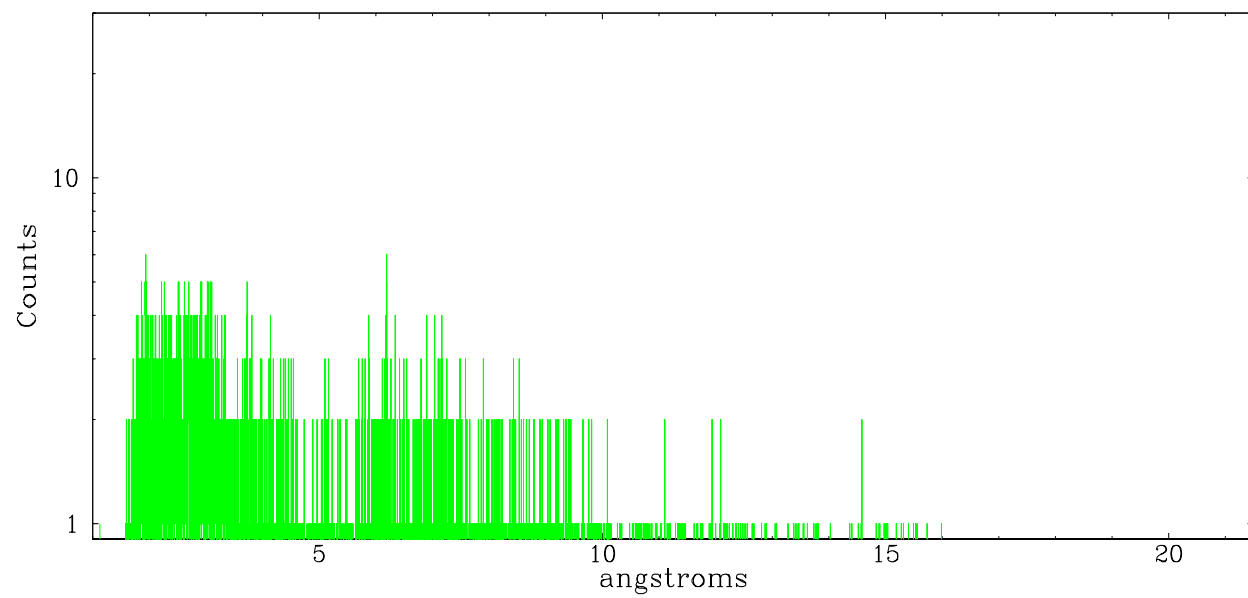
	order -3	order -2	order -1	order 0	order 1	order 2	order 3
Events	305	507	3284	17339	2873	357	288



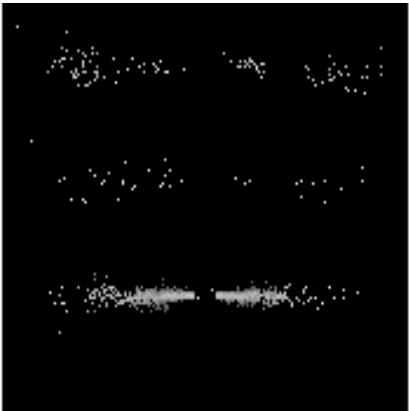
neg order -1



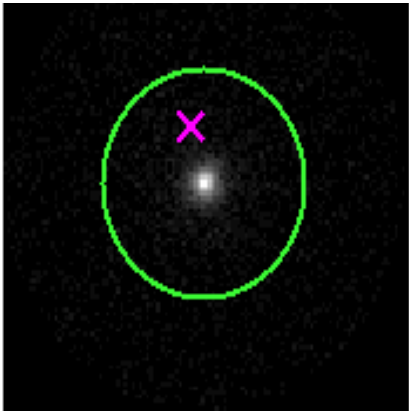
neg order +1



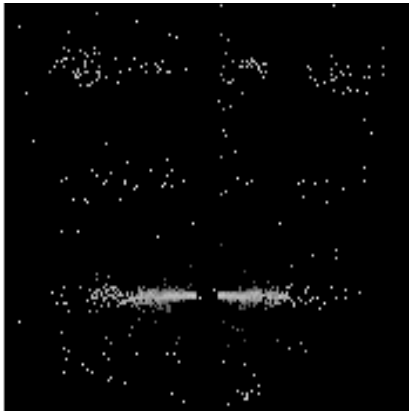
3.2 MEG Arm



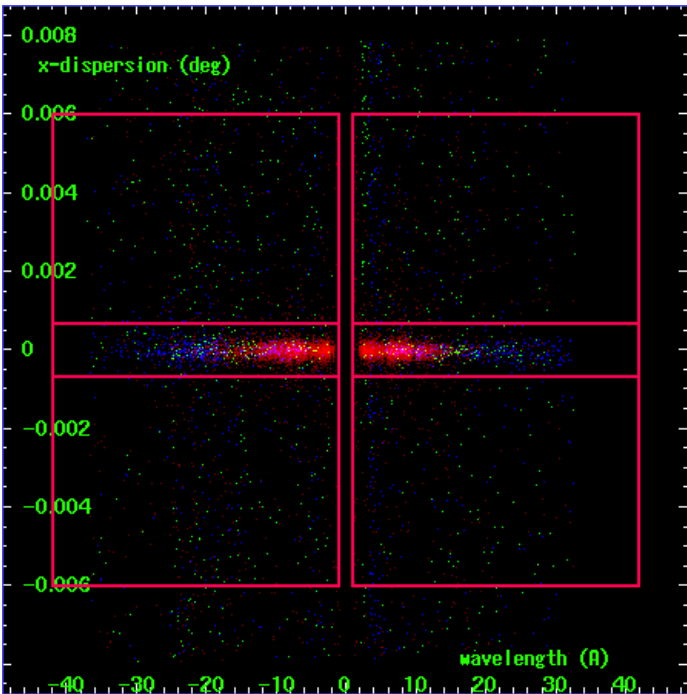
MEG Order Sort 123



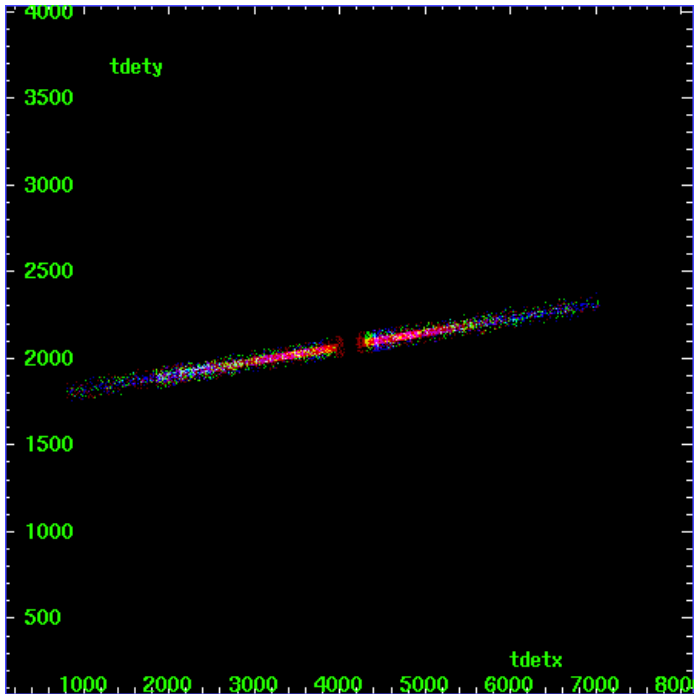
MEG Zero Order



MEG Order Sort ALL

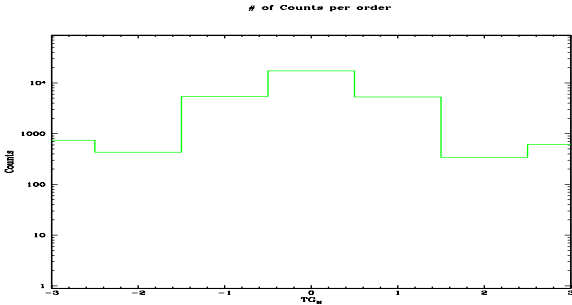


Spot Image MEG

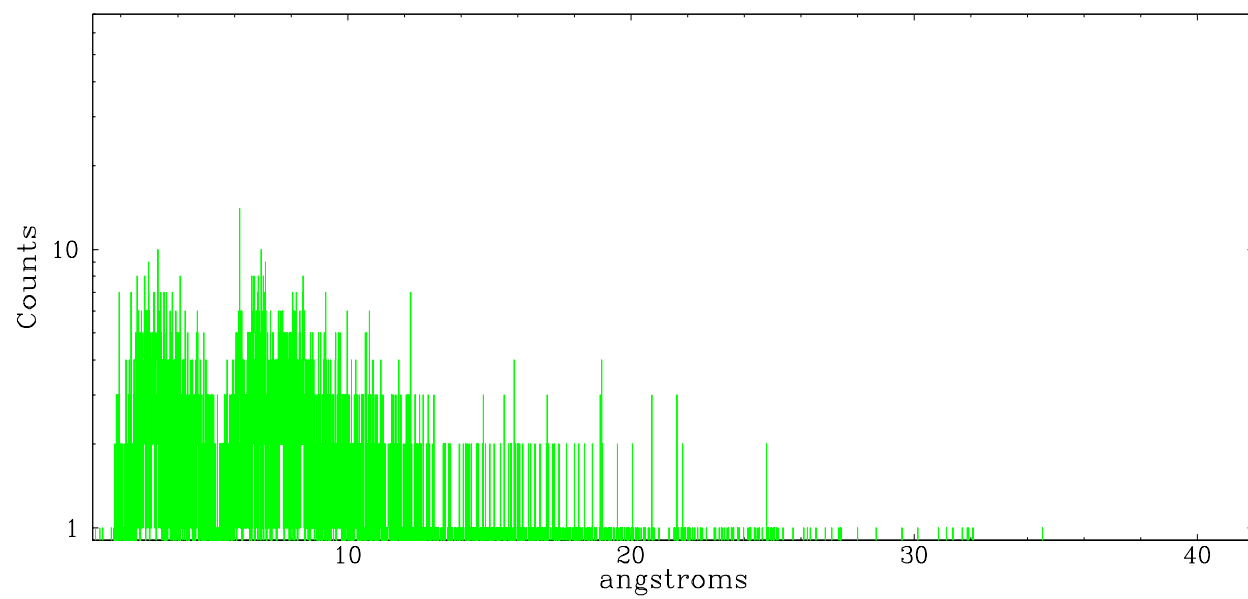


Full Detector MEG

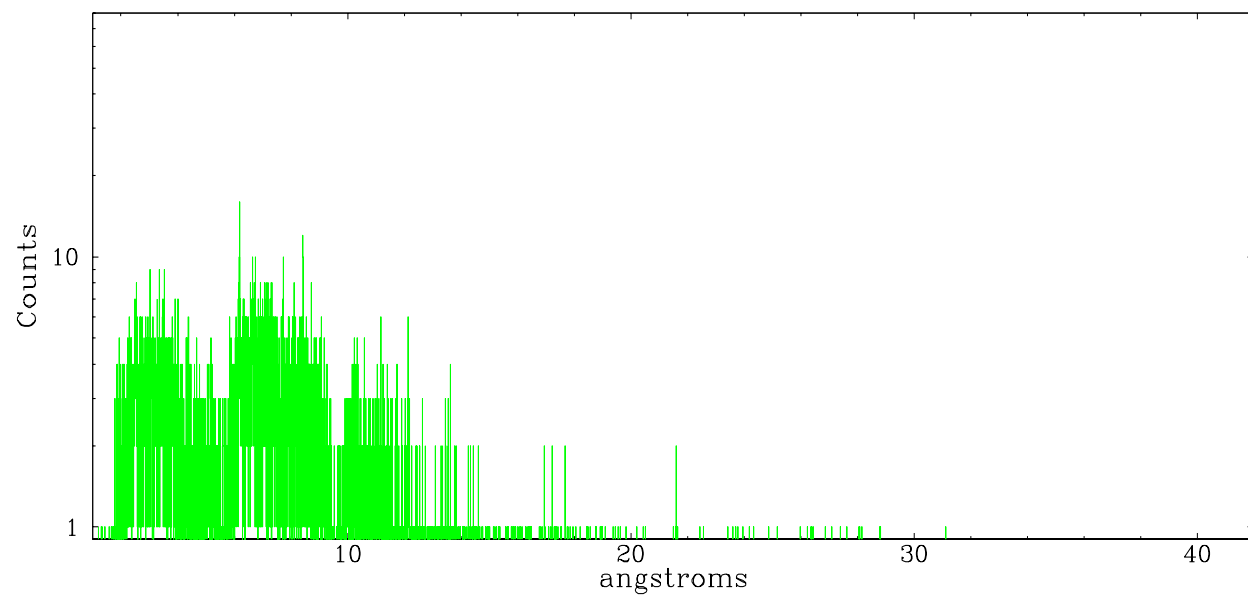
	order -3	order -2	order -1	order 0	order 1	order 2	order 3
Events	742	432	5426	17339	5259	343	609



meg order -1



meg order +1



A Summary

A.1 Status

V&V Scientist	Beth Sundheim
V&V Date (YYYY-MM-DD)	2006.07.05
V&V Edition	1
V&V Disposition and Status	OK
V&V Charge Time	59.892

A.2 Comments