

V&V Reference Report

L2 ASCDS Version : 8.4.5

Observation 3698 - L2 Version 4
Chandra X-Ray Center

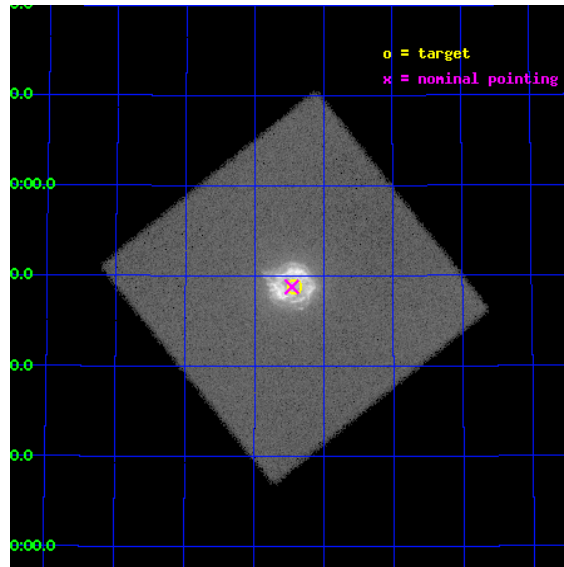
L2 Processing Date : Oct 24 2012

Contents

1	Front	2
2	OBI	3
2.1	OBI	3
2.1.1	Images	3
2.1.2	Parameters	4
2.1.3	Events	4
2.2	Compared Parameters	5
2.3	Aspect	6
2.4	Star Slots	9
2.4.1	Slot 3	9
2.4.2	Slot 4	10
2.4.3	Slot 5	11
2.4.4	Slot 6	12
2.4.5	Slot 7	13
2.5	FID Slots	14
2.5.1	Slot 0	14
2.5.2	Slot 1	15
2.5.3	Slot 2	16
A	Summary	17
A.1	Status	17
A.2	Comments	17

1 Front

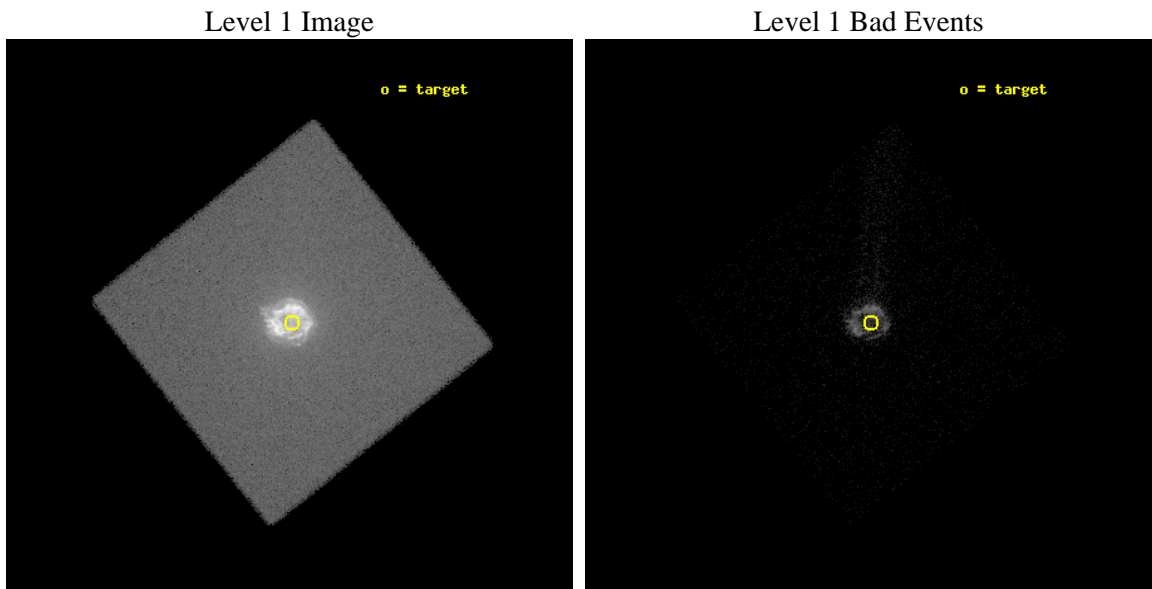
seq_num	590310	Sequence number
obs_id	3698	Observation id
title	AO4A OBSERVATIONS OF THE STANDARD CANDLES CAS A AND G21.5-09	Propo
observer	Dr. CXC Calibration	Principal investigator
object	CAS A	Source name
ra_targ	350.8575	Observer's specified target RA [deg]
dec_targ	58.814833	Observer's specified target Dec [deg]
ra_nom	350.86516951763	Nominal RA [deg]
dec_nom	58.813611719592	Nominal Dec [deg]
roll_nom	6.2944119335739	Nominal Roll [deg]
revision	4	Processing version of data
ontime	5171.3814679682	[s]
livetime	3906.1692719921	Ontime multiplied by DTCOR
l2events	710253	Number of level 2 events



2 OBI

2.1 OBI

2.1.1 Images



2.1.2 Parameters

obi_num	0	Obi number	sched_exp_time	5299.984000	[s] Scheduled observation exposure time
ascdsver	8.4.5	Processing system revision	ontime	5171.3814679682	[s]
caldbver	4.5.2	 	l1events	898330	Number of level 1 events
date	2012-10-24T18:25:47	Date and time of file creation			
revision	4	Processing version of data			

2.1.3 Events

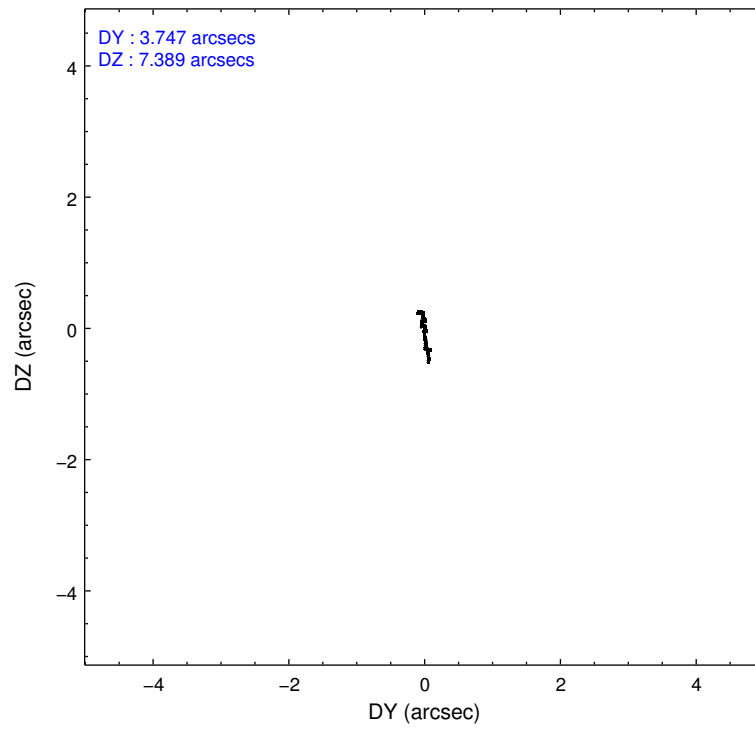
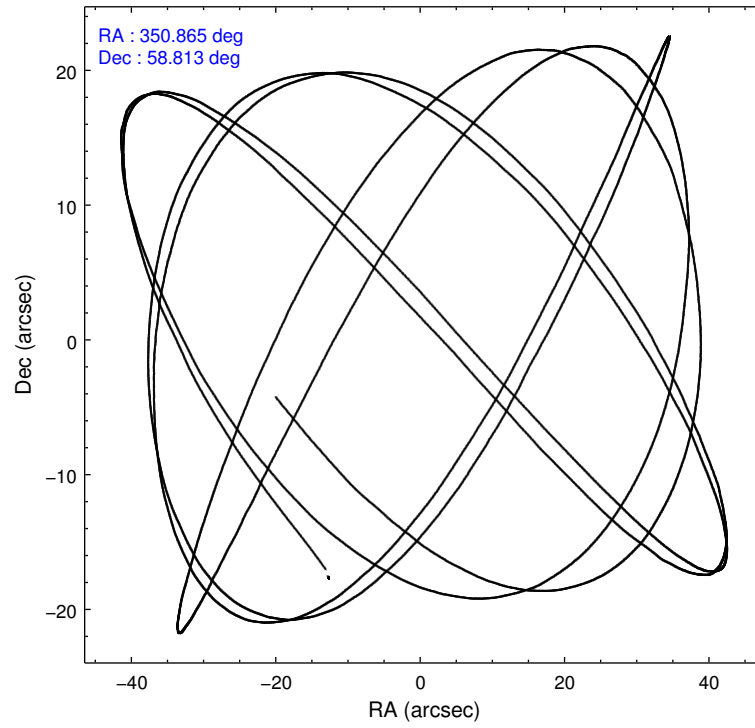
Level 1 Events

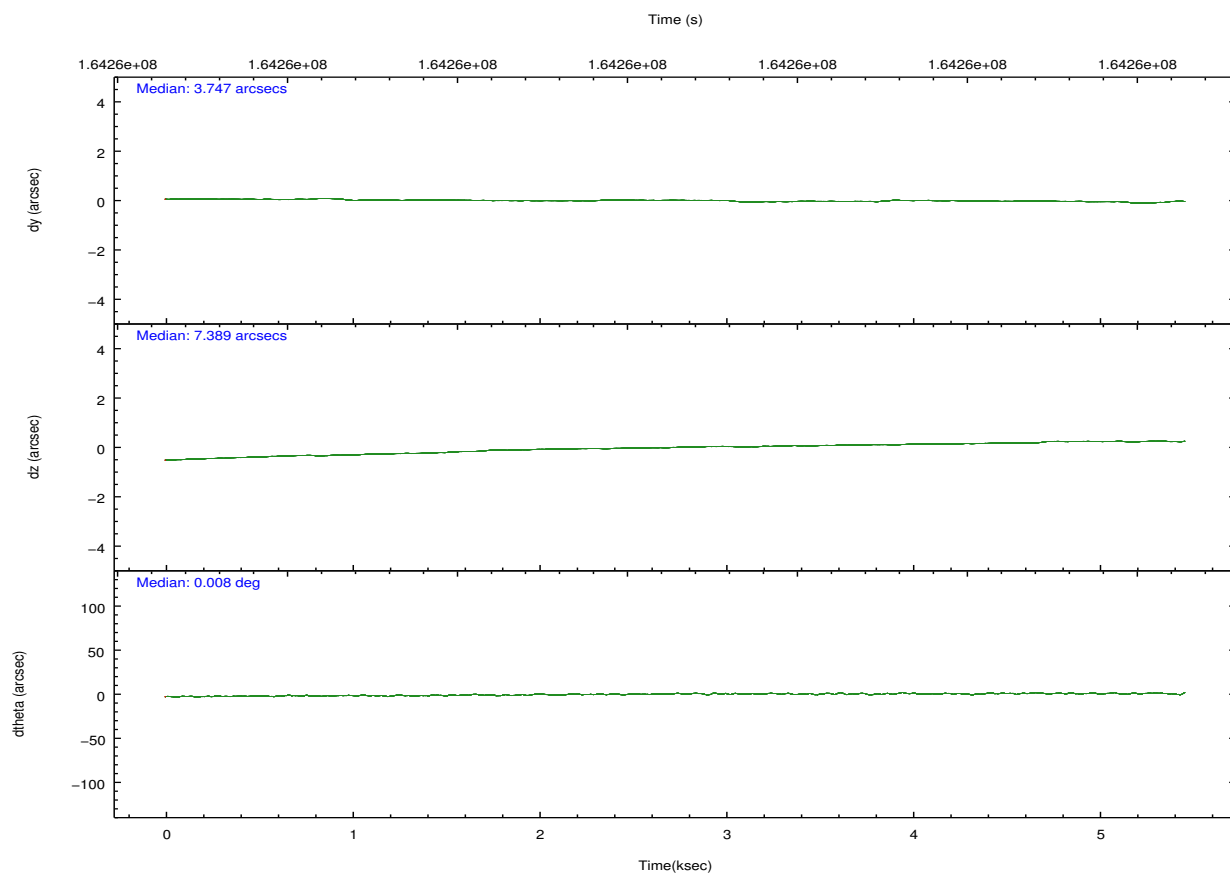
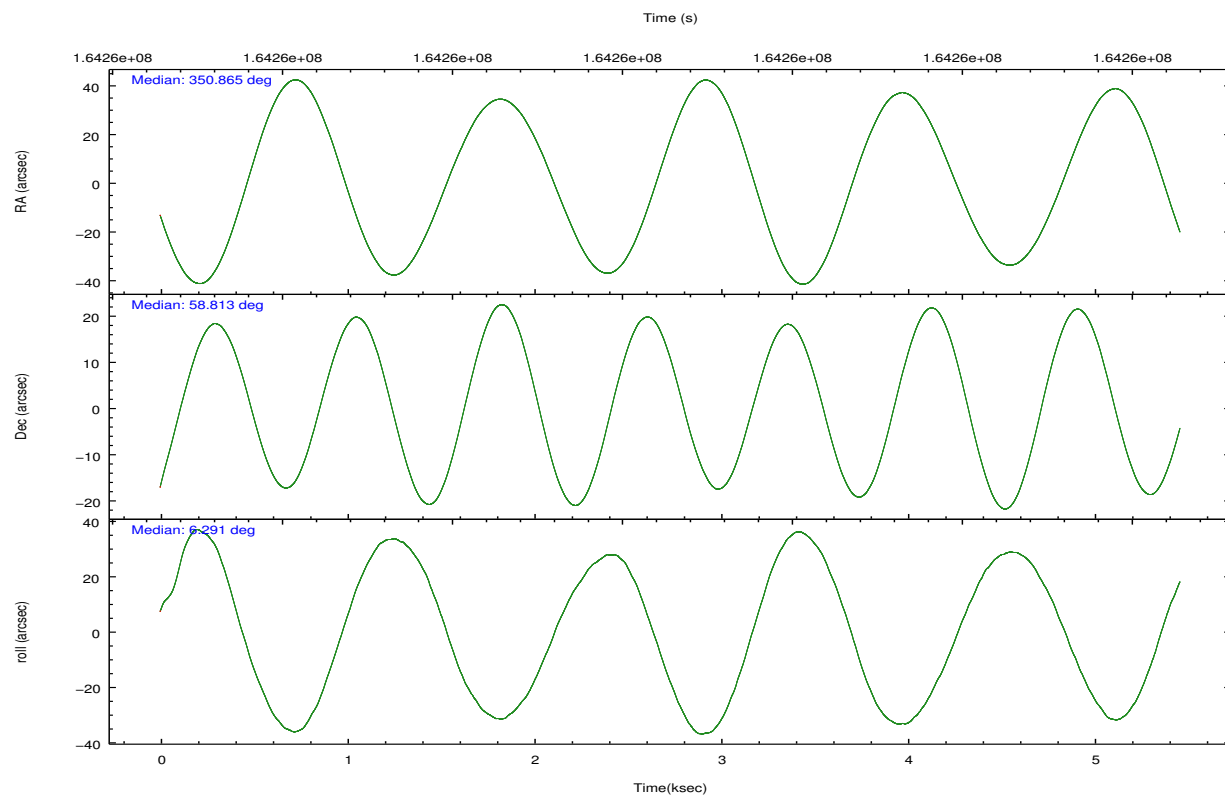
	segment 0
level 1 events	898330
rejected events	31182
rejected %	3%

2.2 Compared Parameters

Parameter	Planned	Actual	Parameter	Planned	Actual
Instrument	HRC	HRC	Obspar format version number	7	7
Detector	HRC-I	HRC-I	Obspar file type	PREDICTED	ACTUAL
Grating	NONE	NONE	Obspar update status	NONE	UPDATED
Data mode	OBSERVING	OBSERVING			
Observation mode	POINTING	POINTING			
[deg] Pointing RA	350.823779	350.8651695176326			
[deg] Pointing Dec	58.797110	58.8136117195921			
[deg] Pointing Roll	6.425313	6.294411933573911			
[s] Window start time (MET)	164073664.184000	164073664.184000			
[s] Window stop time (MET)	168134464.184000	168134464.184000			
[mm] SIM focus pos	-1.040293	-1.038866356238299			
[mm] SIM defocus	0	0.001426264420575141			
[mm] SIM translation stage pos	126.985494	126.9829799899862			
[mm] SIM translation stage offset	0	0.002508901615314585			
[s] Observation start time (MET)	164257704.184000	164257300.03968			
Observation start date	2003-03-17T03:07:20	2003-03-17T03:01:40			
[s] Observation end time (MET)	164263004.184000	164263318.83994			
Observation end date	2003-03-17T04:35:40	2003-03-17T04:41:58			

2.3 Aspect



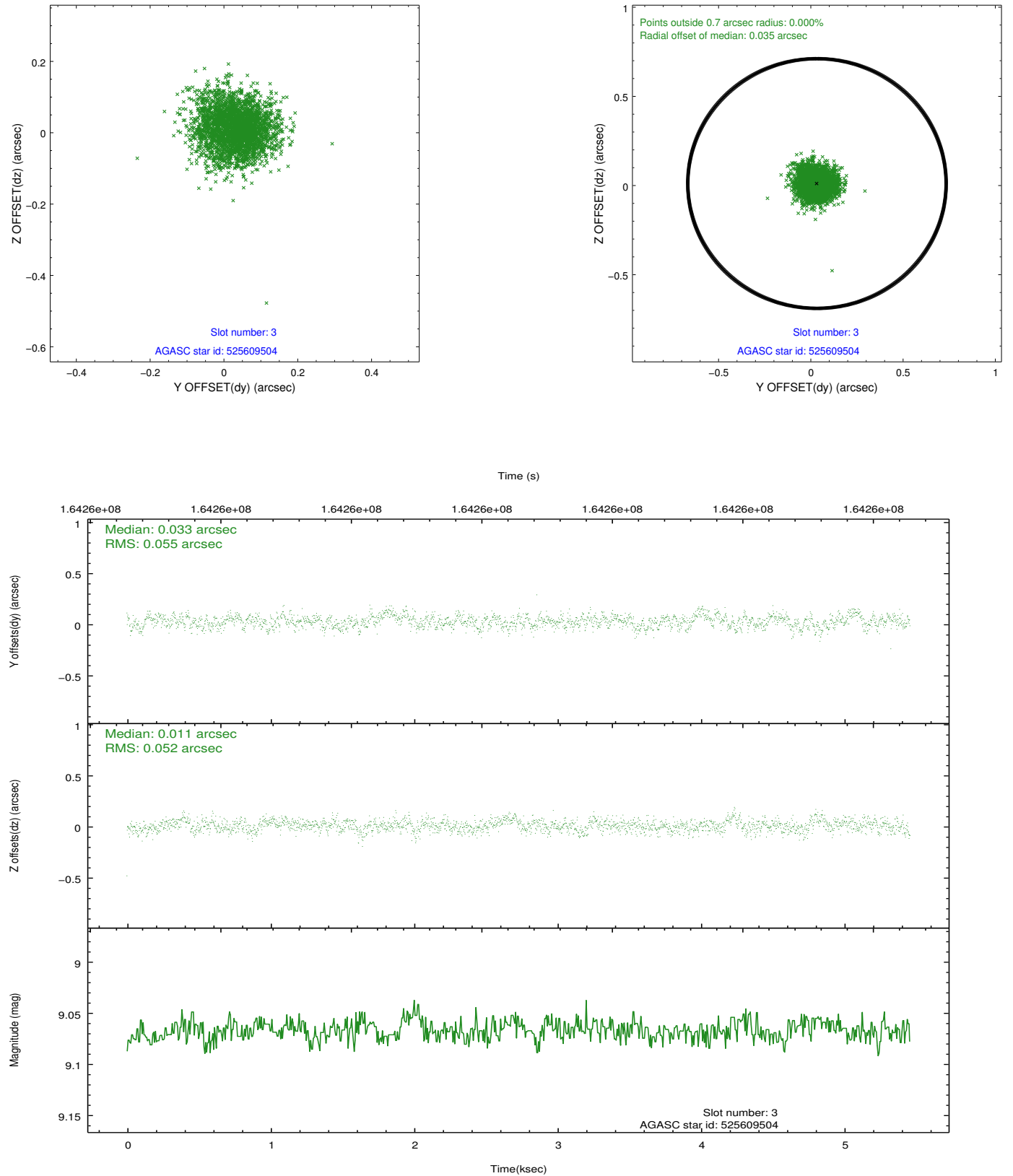


Slot Statistics

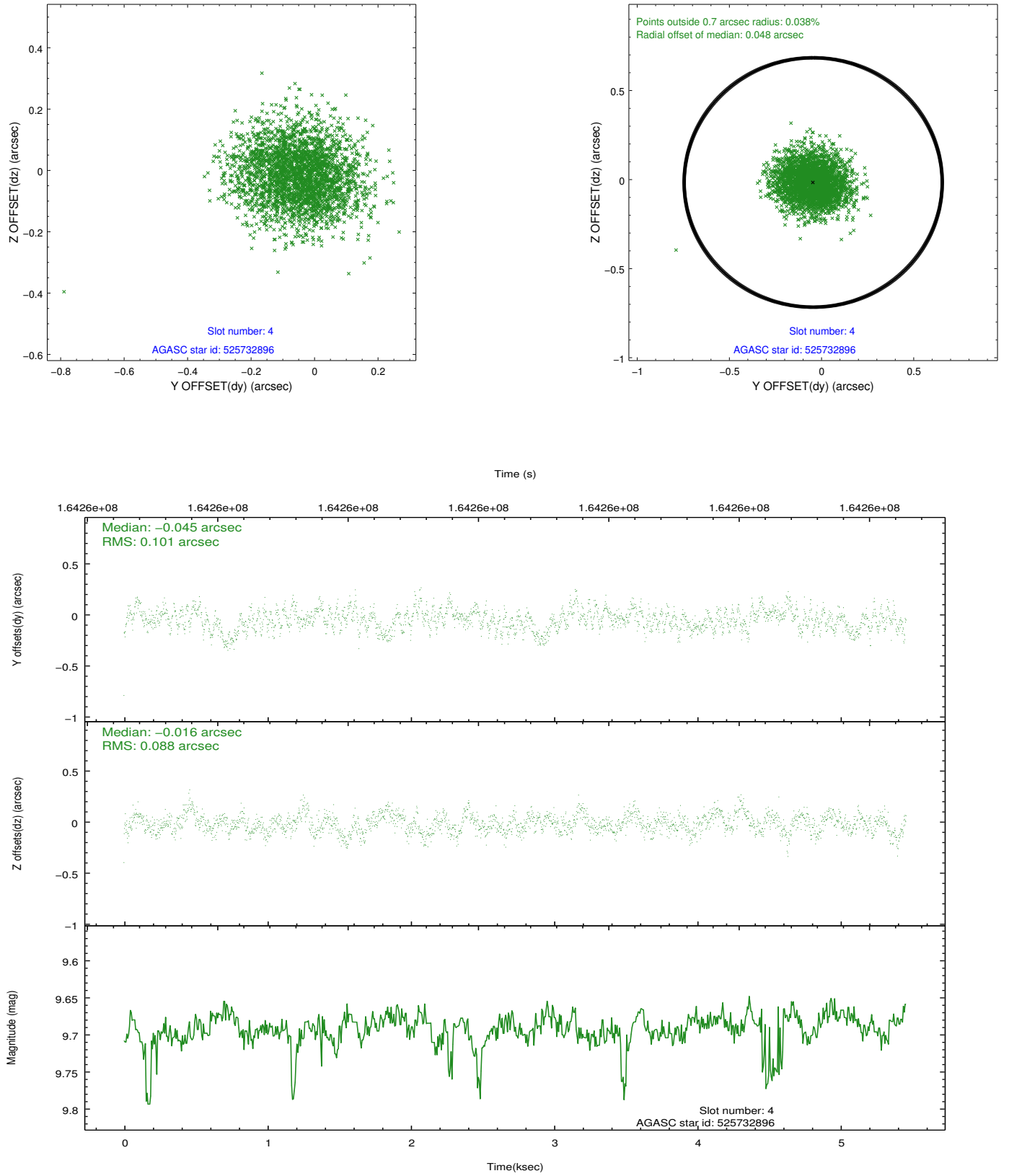
slot	status	id	mag	n_pts	med_dy	med_dz	dr1	dr2	ra	dec	mean_y	mean_z
0	FID	HRC-I-1	6.99	1332	0.018	0.004	0.013	0.019	0.000000	0.000000	-759.21	-1295.20
1	FID	HRC-I-2	7.03	1332	0.111	-0.096	0.011	0.017	0.000000	0.000000	852.95	-1297.82
2	FID	HRC-I-3	7.08	1332	-0.011	0.000	0.009	0.013	0.000000	0.000000	-1187.10	1008.38
3	GUIDE	525609504	9.07	2663	0.033	0.011	0.081	0.129	349.896632	58.356658	-1915.93	-1367.51
4	GUIDE	525732896	9.69	2657	-0.045	-0.016	0.144	0.228	351.456486	59.410070	1398.71	2068.43
5	GUIDE	525732488	8.41	2664	-0.015	-0.014	0.077	0.123	350.087090	58.516915	-1487.53	-838.83
6	GUIDE	525735976	8.86	2664	-0.052	-0.031	0.084	0.131	350.142956	58.277622	-1489.53	-1707.86
7	GUIDE	525732528	9.36	2660	0.085	0.049	0.104	0.175	351.607241	59.298932	1633.72	1642.28

2.4 Star Slots

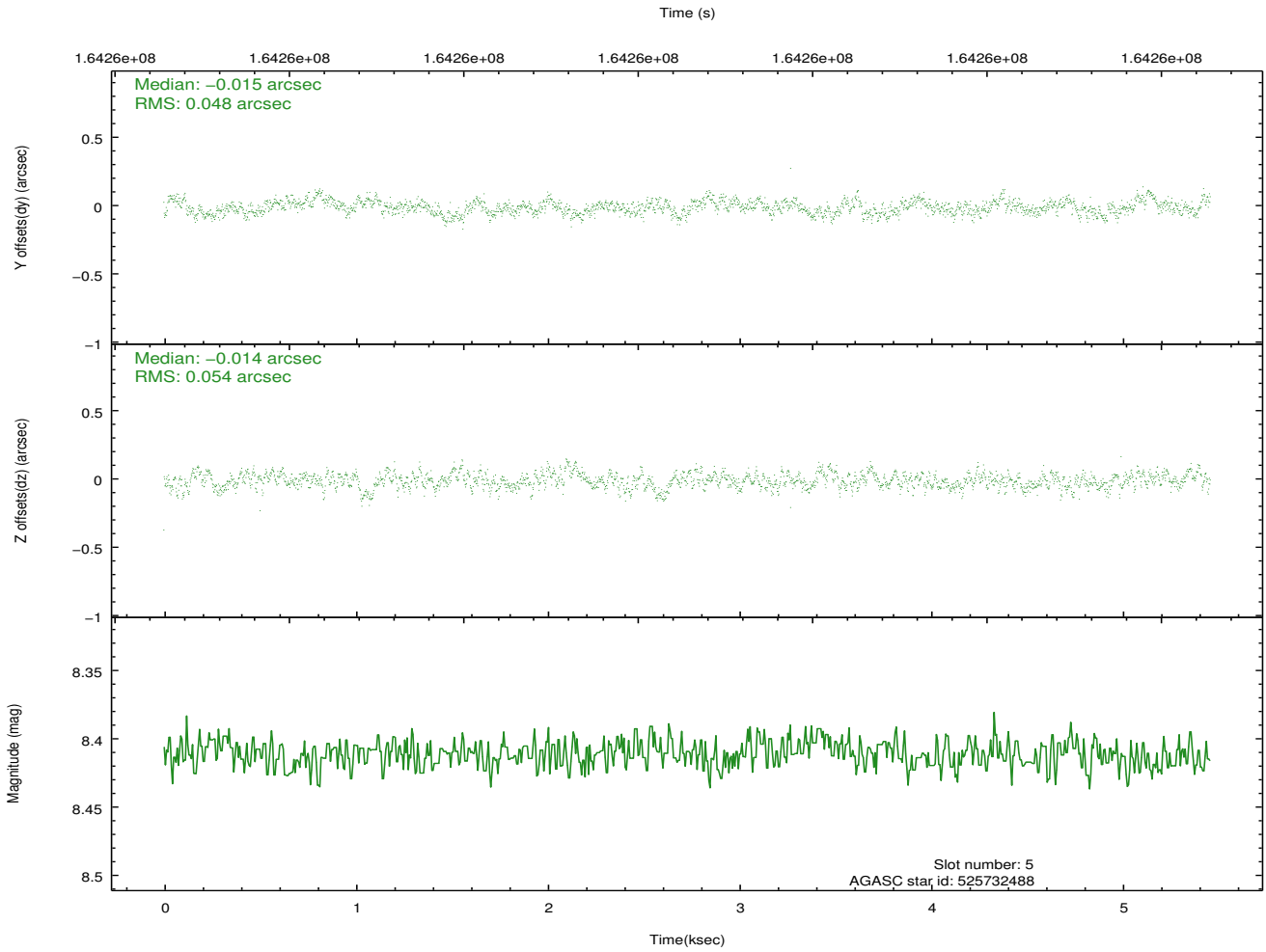
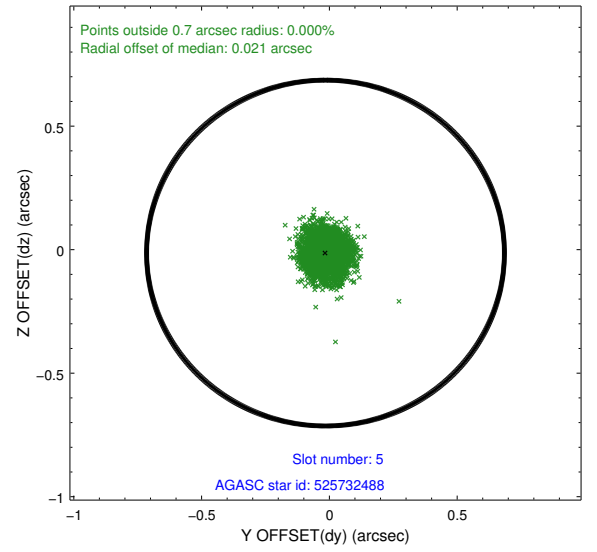
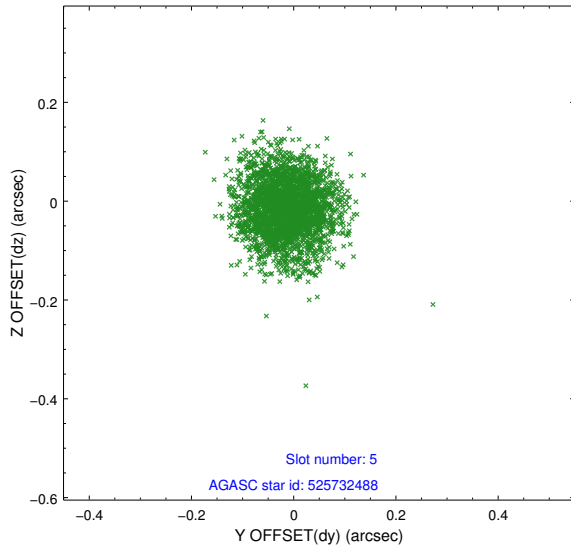
2.4.1 Slot 3



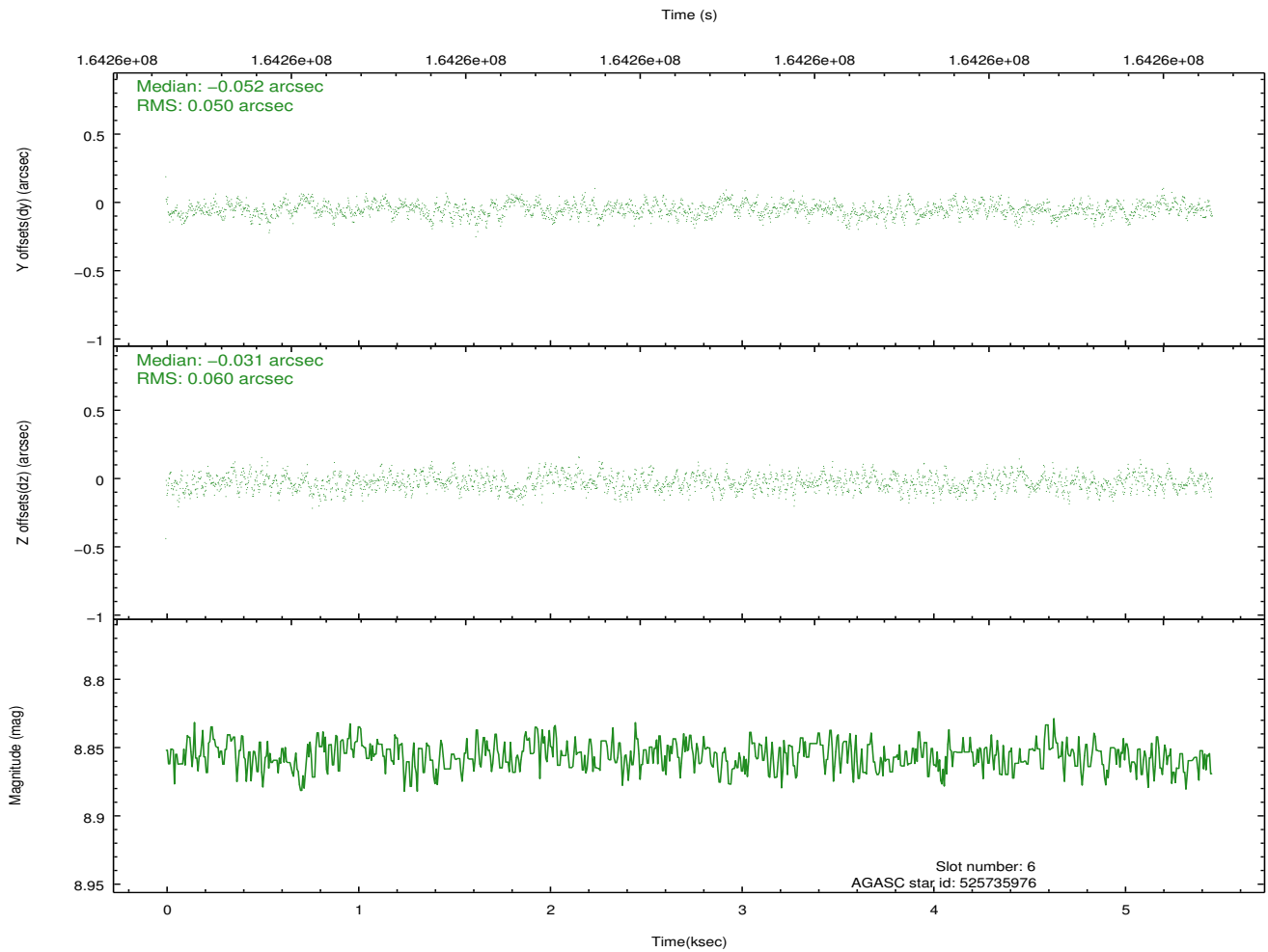
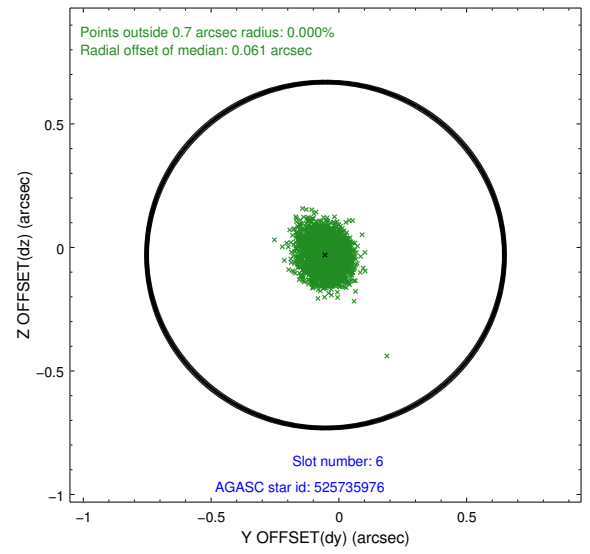
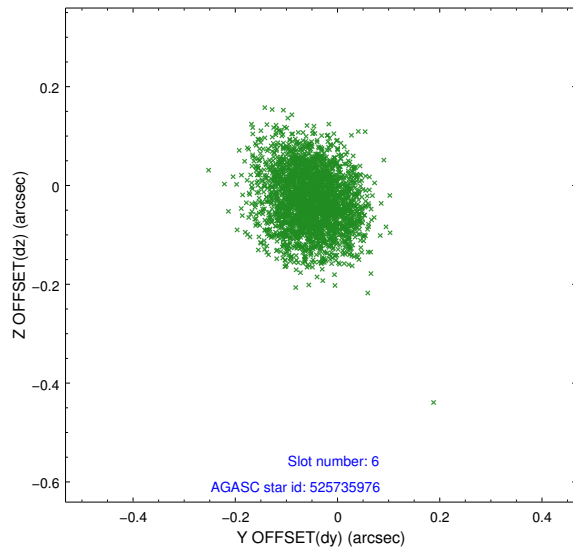
2.4.2 Slot 4



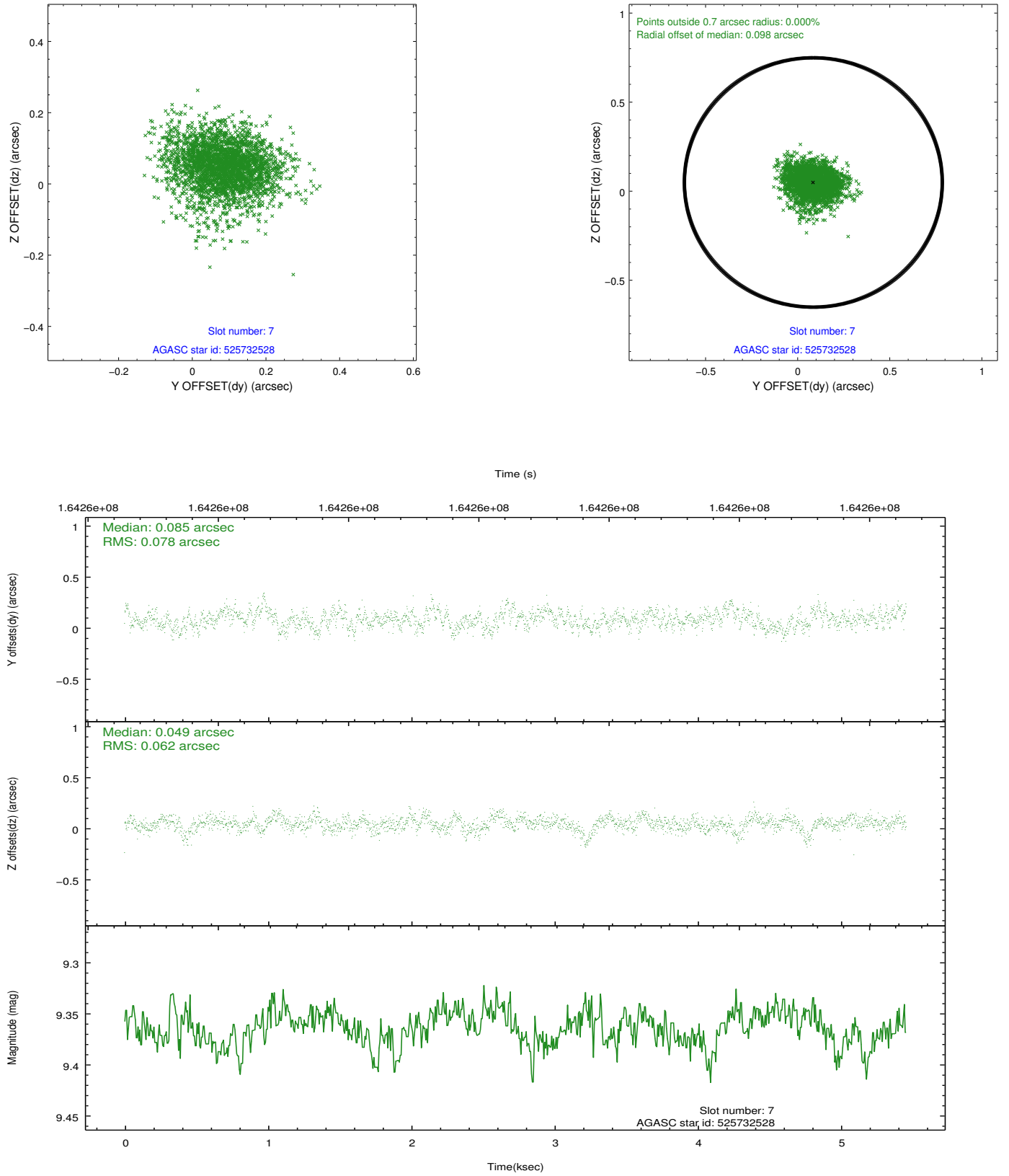
2.4.3 Slot 5



2.4.4 Slot 6

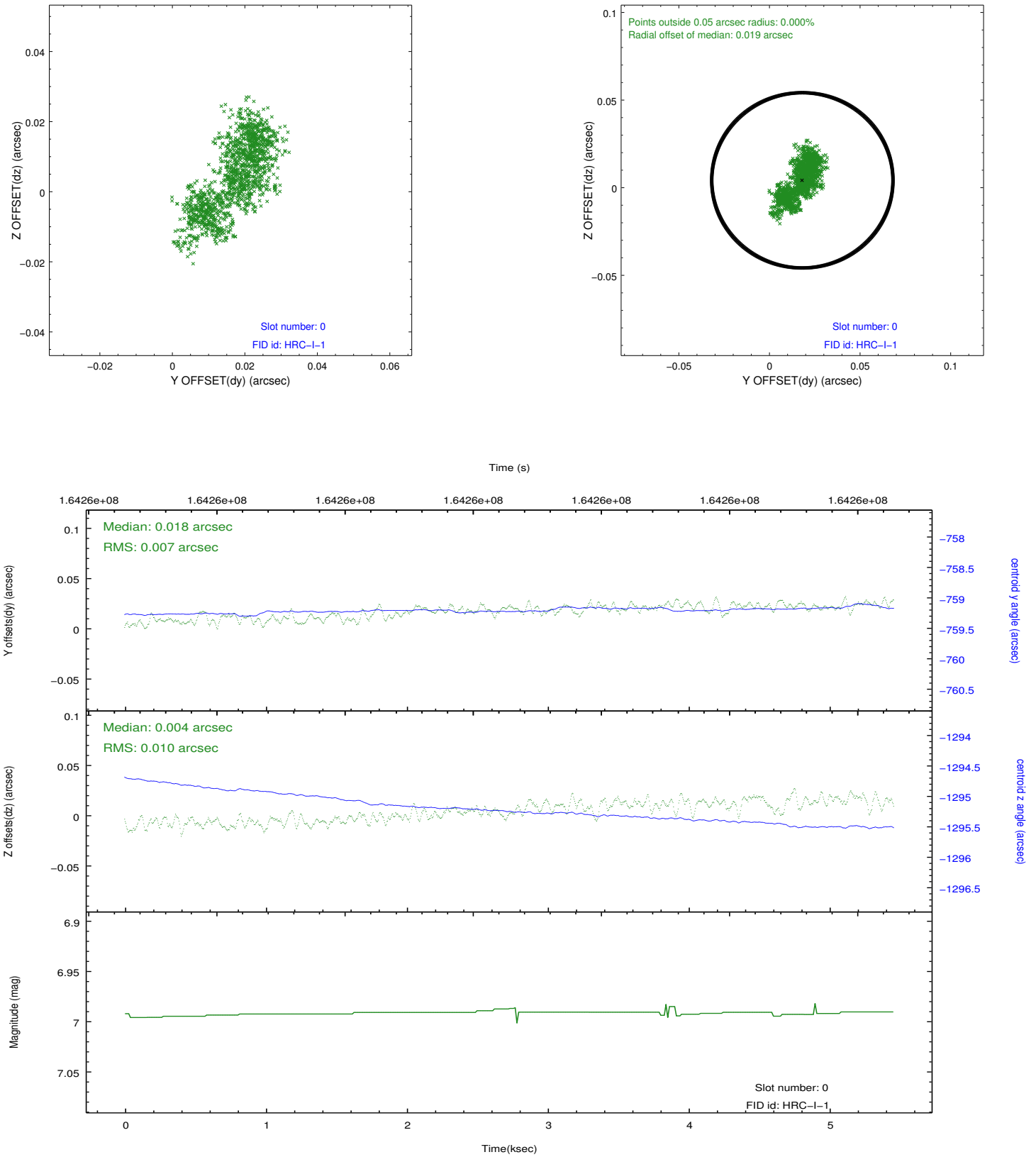


2.4.5 Slot 7

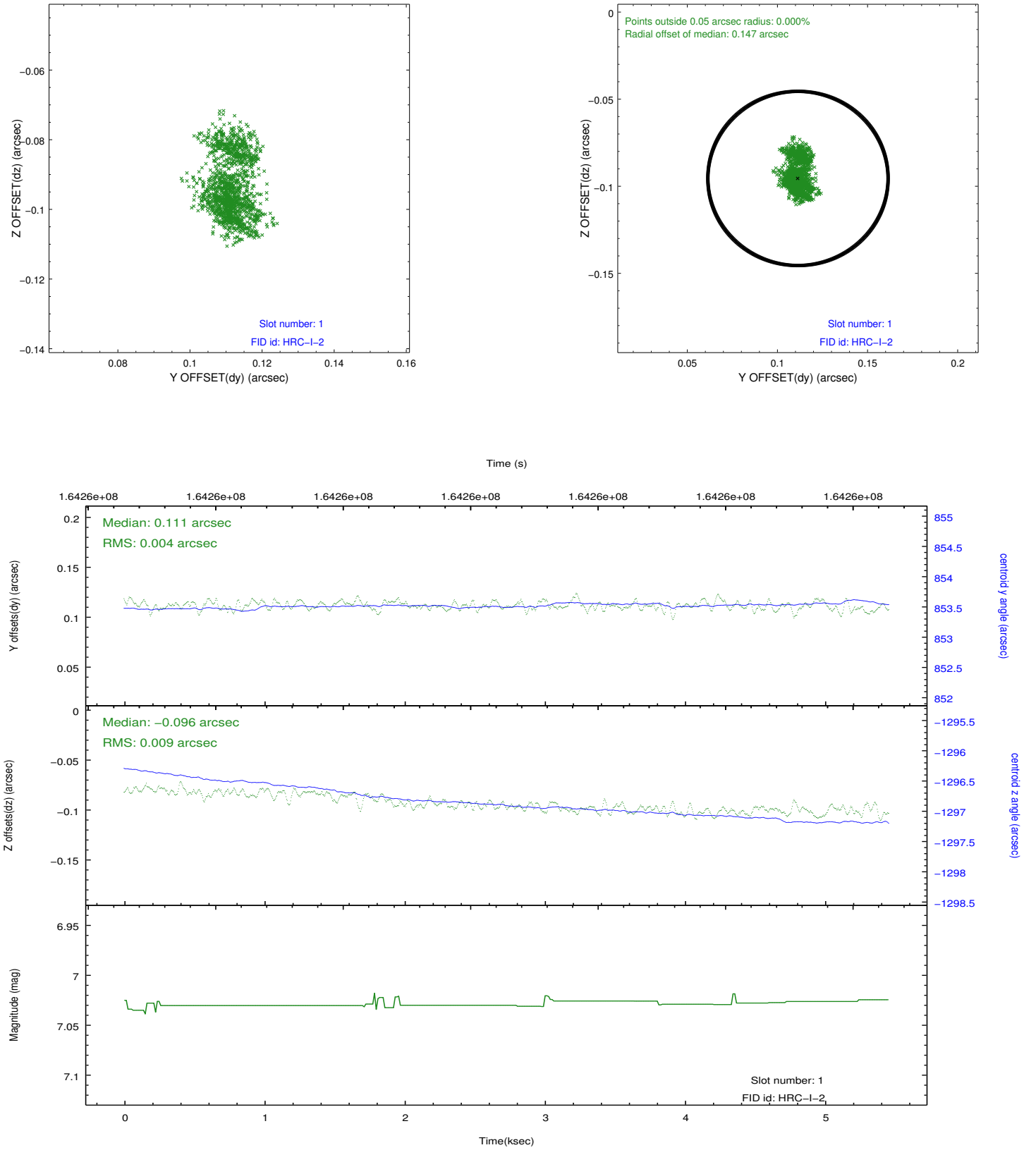


2.5 FID Slots

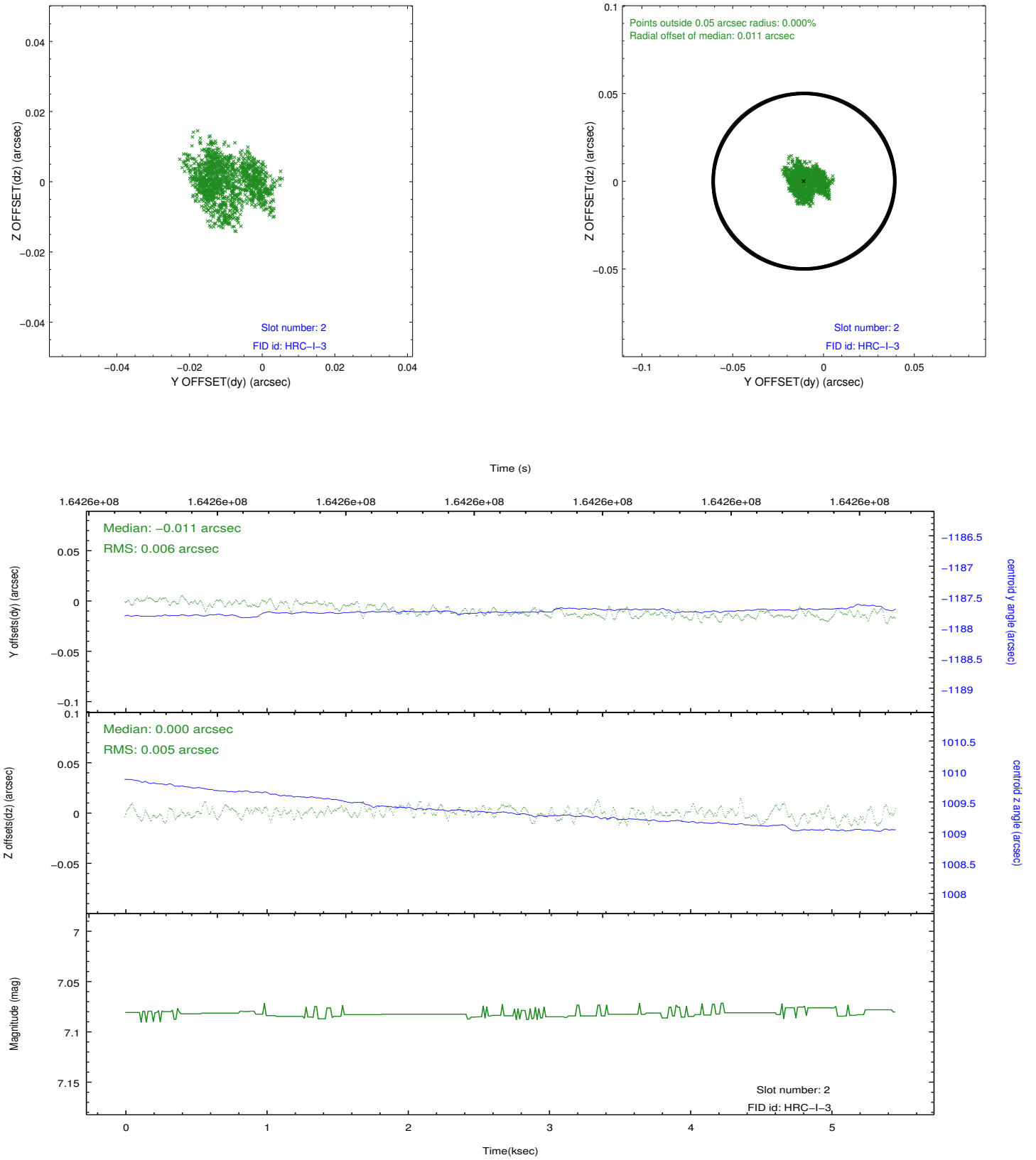
2.5.1 Slot 0



2.5.2 Slot 1



2.5.3 Slot 2



A Summary

A.1 Status

V&V Scientist	Jen Lauer
V&V Date (YYYY-MM-DD)	2012.11.08
V&V Edition	1
V&V Disposition and Status	OK
V&V Charge Time	5.171

A.2 Comments

Window constraint satisfied.