

V&V Reference Report

L2 ASCDS Version : 8.4.5

Observation 3638 - L2 Version 3
Chandra X-Ray Center

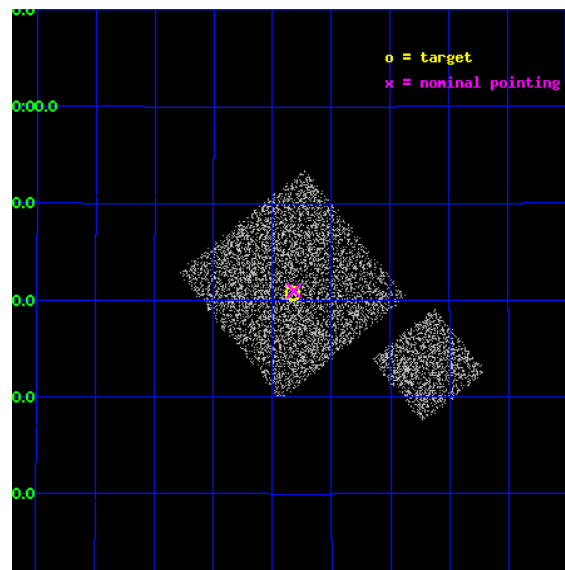
L2 Processing Date : Oct 24 2012

Contents

1	Front	2
2	OBI	3
2.1	OBI	3
2.1.1	Images	3
2.1.2	Bias	3
2.1.3	Parameters	4
2.1.4	Events	4
2.2	Compared Parameters	5
2.3	Aspect	6
2.4	Star Slots	9
2.4.1	Slot 3	9
2.4.2	Slot 4	10
2.4.3	Slot 5	11
2.4.4	Slot 6	12
2.4.5	Slot 7	13
2.5	FID Slots	14
2.5.1	Slot 0	14
2.5.2	Slot 1	15
2.5.3	Slot 2	16
A	Summary	17
A.1	Status	17
A.2	Comments	17

1 Front

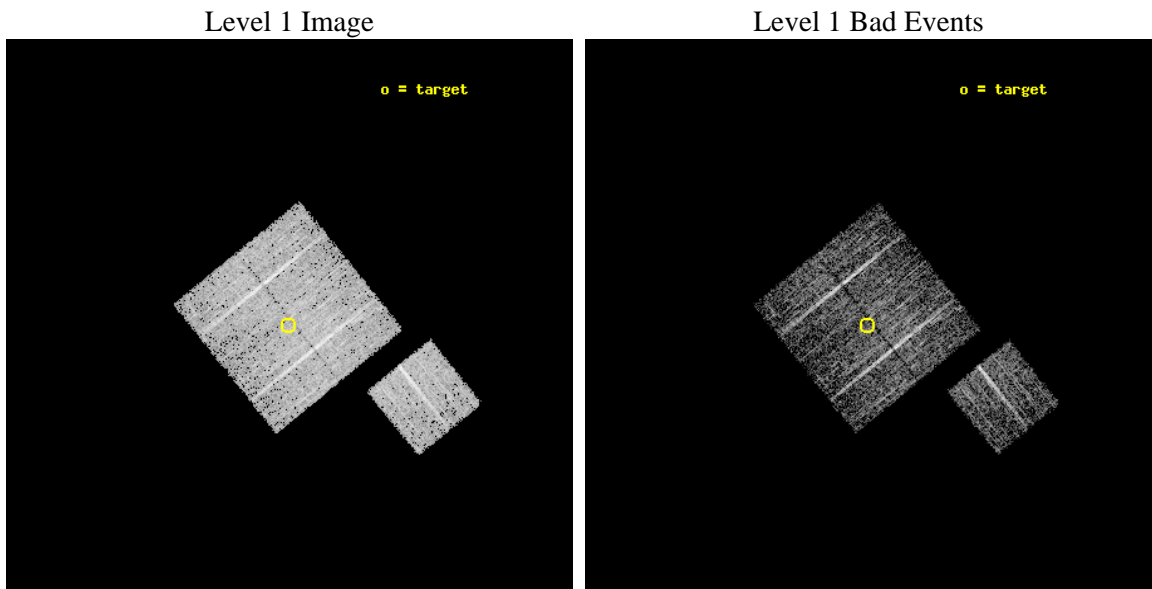
seq_num	900238	Sequence number
obs_id	3638	Observation id
title	CHANDRA LARGE SCALE SURVEY OF THE NOAO BOOTES DEEP FIELD	Proposal
observer	Dr. Stephen Murray	Principal investigator
object	NOAO FIELD F19	Source name
dtcycle	0	
cycle	P	events from which exps? Prim/Second/Both
ra_targ	216.957163	Observer's specified target RA [deg]
dec_targ	34.679082	Observer's specified target Dec [deg]
ra_nom	216.95446772531	Nominal RA [deg]
dec_nom	34.68316670748	Nominal Dec [deg]
roll_nom	141.01027862074	Nominal Roll [deg]
revision	3	Processing version of data
ontime	4674.2329220176	Sum of GTIs [s]
livetime	4613.1606277712	Livetime [s]
ontime0	4674.1098020077	Sum of GTIs [s]
ontime1	4674.1508221328	Sum of GTIs [s]
ontime2	4674.1918621361	Sum of GTIs [s]
ontime3	4674.2329220176	Sum of GTIs [s]
ontime6	4674.0687421262	Sum of GTIs [s]
l2events	9181	Number of level 2 events



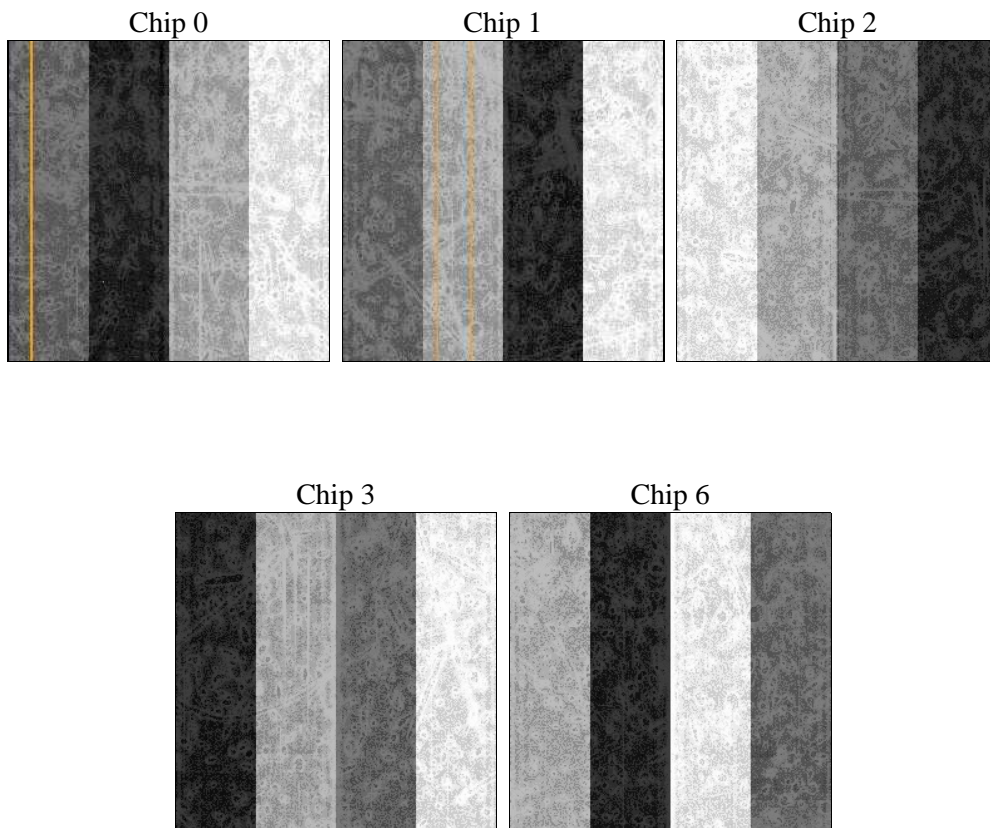
2 OBI

2.1 OBI

2.1.1 Images



2.1.2 Bias



2.1.3 Parameters

obi_num	1	Obi number	sched_exp_time	4900.000000	[s] Scheduled observation exposure time
ascdsver	8.4.5	Processing system revision	ontime	4674.2329220176	Sum of GTIs [s]
caldsver	4.5.2	 	ontime0	4674.1098020077	Sum of GTIs [s]
date	2012-10-24T23:54:04	Date and time of file creation	ontime1	4674.1508221328	Sum of GTIs [s]
revision	3	Processing version of data	ontime2	4674.1918621361	Sum of GTIs [s]
			ontime3	4674.2329220176	Sum of GTIs [s]
			ontime6	4674.0687421262	Sum of GTIs [s]
			l1events	114614	Number of level 1 events

2.1.4 Events

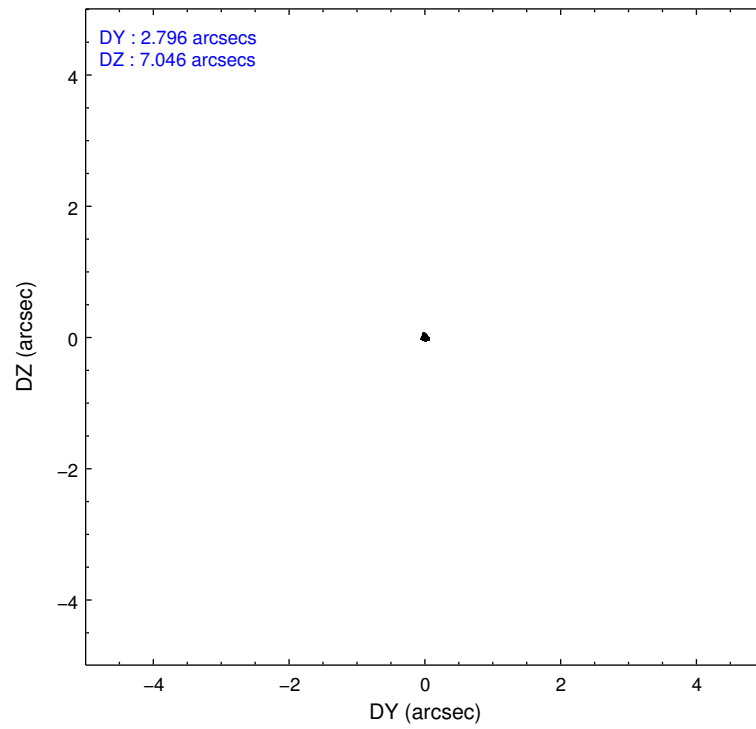
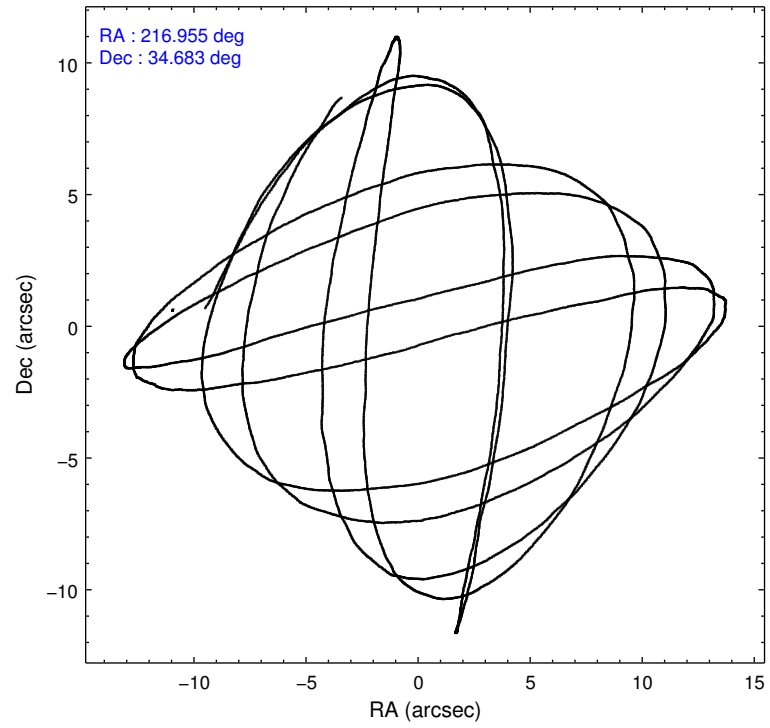
	ccd 0	ccd 1	ccd 2	ccd 3	ccd 6
level 1 events	22393	21724	24673	22675	23149
rejected events	19985	19303	22587	20586	20903
rejected %	89%	88%	91%	90%	90%

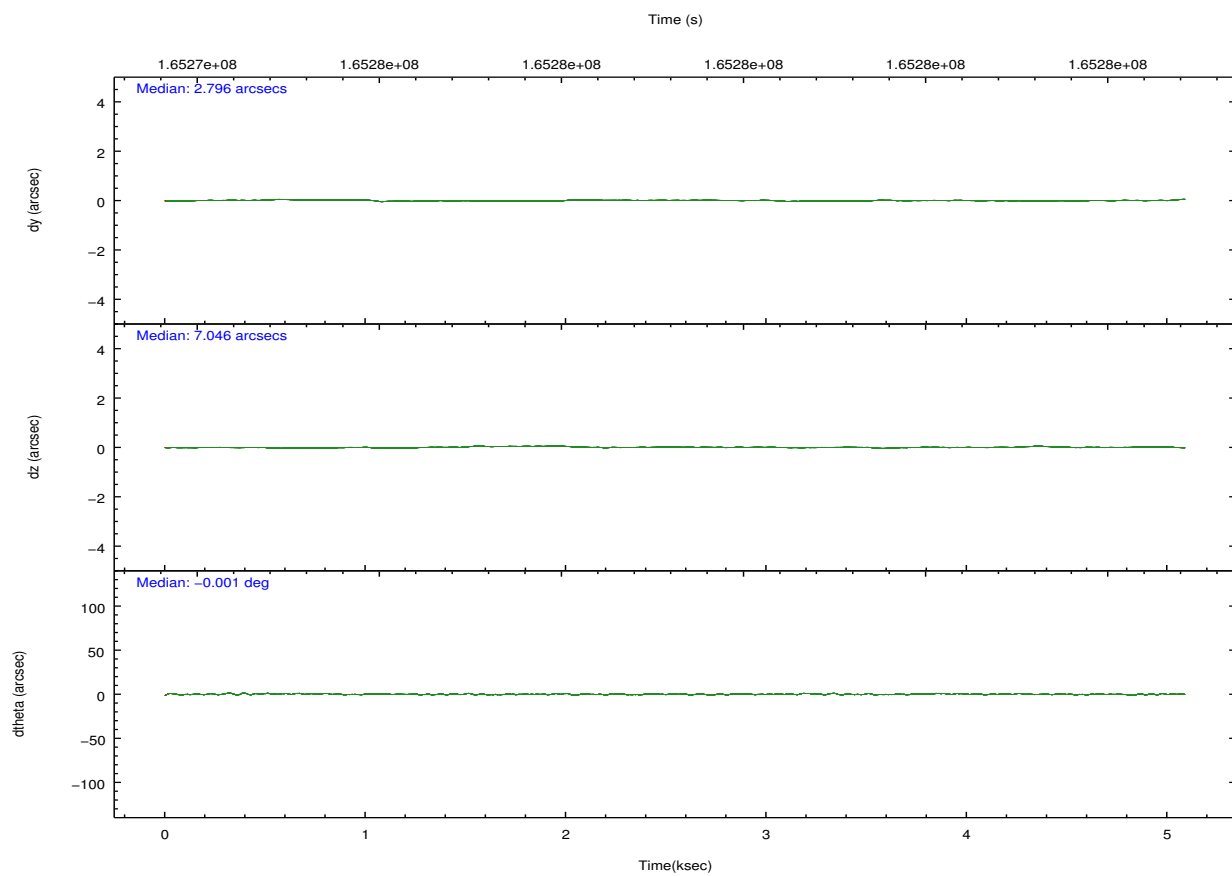
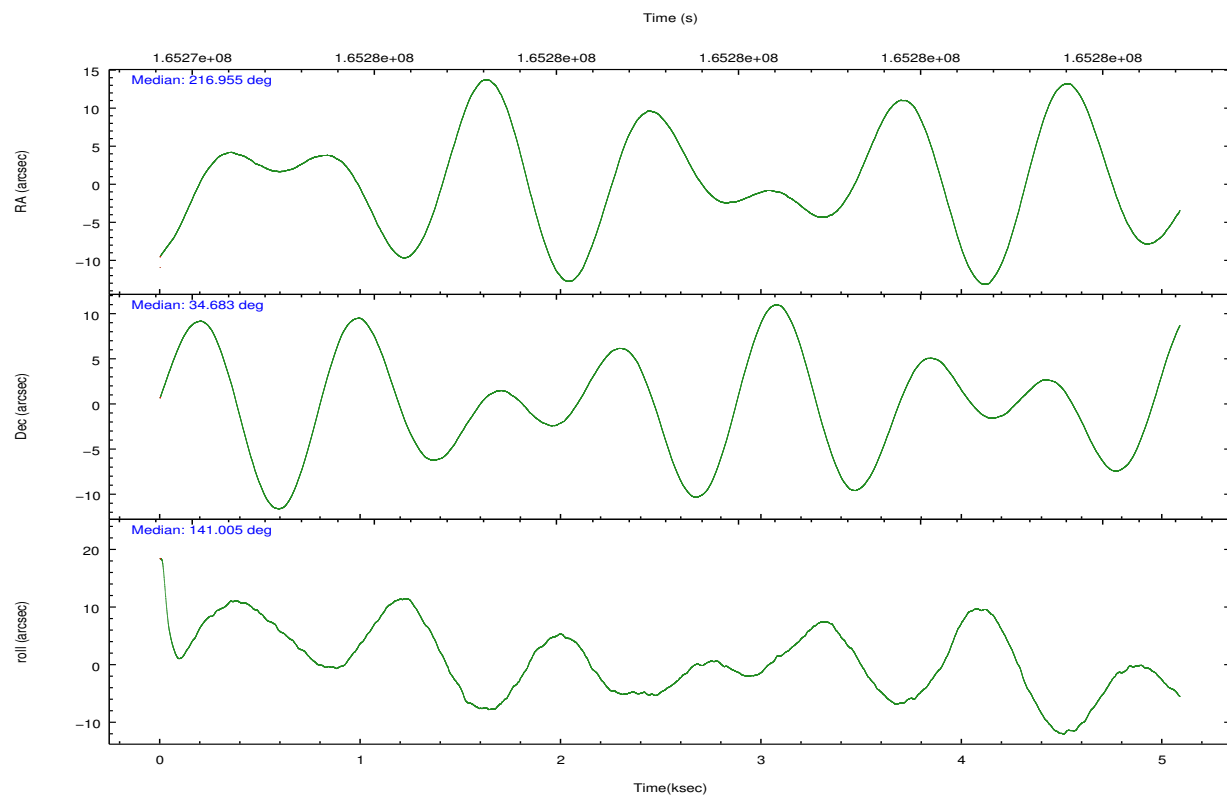
	ccd 0	ccd 1	ccd 2	ccd 3	ccd 6
grade 0 events	919	883	783	730	797
	4%	4%	3%	3%	3%
grade 1 events	9	15	10	12	12
	0%	0%	0%	0%	0%
grade 2 events	507	489	466	428	473
	2%	2%	1%	1%	2%
grade 3 events	308	302	233	259	259
	1%	1%	0%	1%	1%
grade 4 events	252	277	264	237	255
	1%	1%	1%	1%	1%
grade 5 events	678	723	633	727	774
	3%	3%	2%	3%	3%
grade 6 events	425	472	345	437	465
	1%	2%	1%	1%	2%
grade 7 events	19295	18563	21939	19845	20114
	86%	85%	88%	87%	86%

2.2 Compared Parameters

Parameter	Planned	Actual	Parameter	Planned	Actual
Instrument	ACIS	ACIS	Obspar format version number	7	7
Detector	ACIS-01236	ACIS-01236	Obspar file type	PREDICTED	ACTUAL
Grating	NONE	NONE	Obspar update status	NONE	UPDATED
Data mode	VFAINT	VFAINT	Number of optional ACIS chips dropped	0	0
Observation mode	POINTING	POINTING	On-chip summing requested	N	N
[deg] Pointing RA	216.987424	216.9544677253129	Subarray requested	NONE	NONE
[deg] Pointing Dec	34.678994	34.68316670747998	Alternating exposures requested	N	N
[deg] Pointing Roll	140.782783	141.010278620736	[s] Primary exposure time	0.000000	3.1
[mm] SIM focus pos	-0.782348	-0.7809083437167272			
[mm] SIM defocus	0	0.001439871863259334			
[mm] SIM translation stage pos	-233.592463	-233.5874344608287			
[mm] SIM translation stage offset	0	-0.005018542100998502			
[s] Observation start time (MET)	165274270.184000	165273894.57002			
Observation start date	2003-03-28T21:30:06	2003-03-28T21:24:54			
[s] Observation end time (MET)	165279170.184000	165279304.52025			
Observation end date	2003-03-28T22:51:46	2003-03-28T22:55:04			
Read mode	TIMED	TIMED			

2.3 Aspect



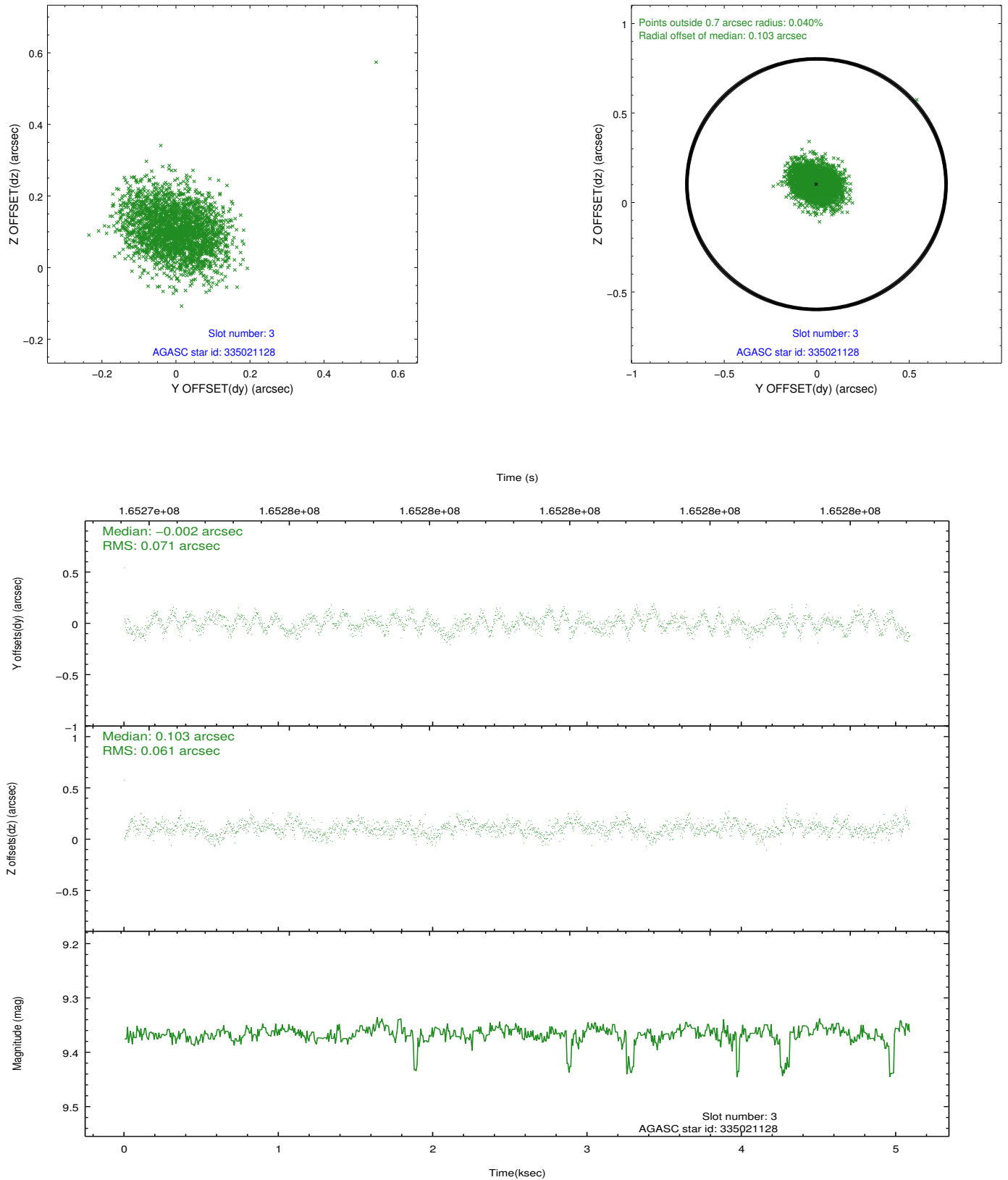


Slot Statistics

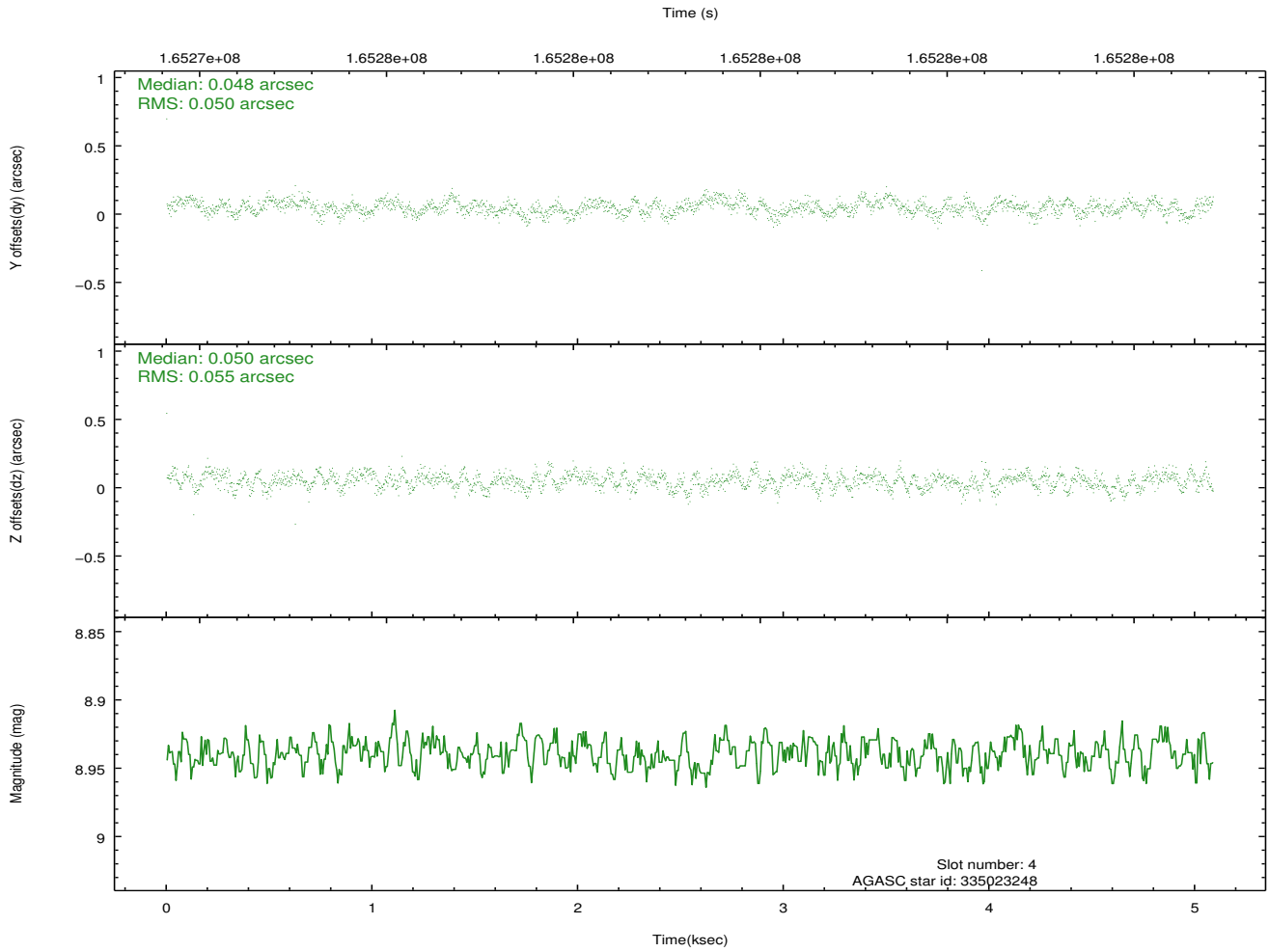
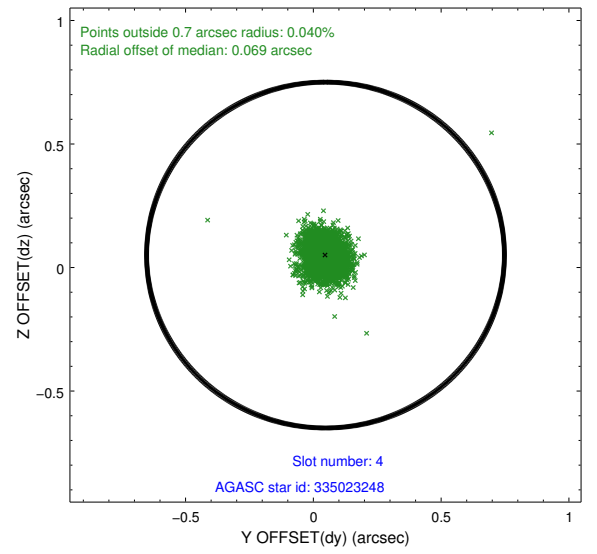
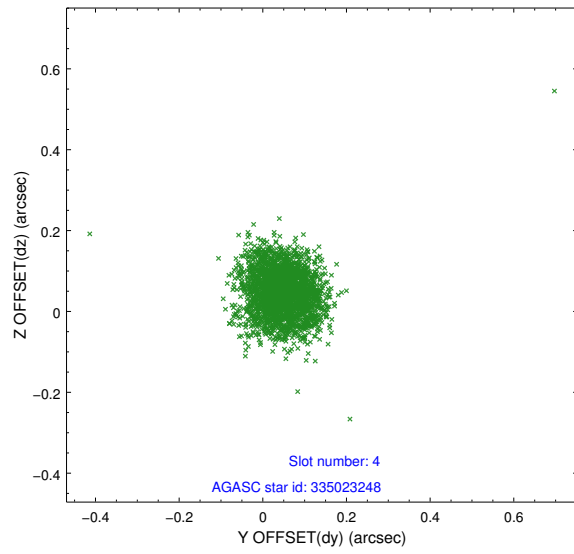
slot	status	id	mag	n_pts	med_dy	med_dz	dr1	dr2	ra	dec	mean_y	mean_z
0	FID	ACIS-I-1	7.25	1242	0.020	0.001	0.006	0.011	0.000000	0.000000	937.01	-830.45
1	FID	ACIS-I-5	7.24	1242	-0.089	0.060	0.006	0.010	0.000000	0.000000	-1810.51	1066.54
2	FID	ACIS-I-6	7.26	1242	-0.022	0.009	0.007	0.011	0.000000	0.000000	401.26	1712.31
3	GUIDE	335021128	9.37	2477	-0.002	0.103	0.100	0.158	216.159551	34.422539	1327.45	2262.30
4	GUIDE	335023248	8.94	2483	0.048	0.050	0.076	0.122	217.634832	34.944512	-870.92	-1952.15
5	GUIDE	335028336	9.47	2482	0.074	-0.032	0.091	0.151	217.189840	34.665629	-494.39	-342.77
6	GUIDE	335030384	8.82	2483	-0.007	-0.153	0.069	0.116	216.806407	34.722197	513.63	217.75
7	GUIDE	335419408	9.16	2482	-0.112	0.039	0.072	0.115	217.210194	35.075700	395.40	-1521.62

2.4 Star Slots

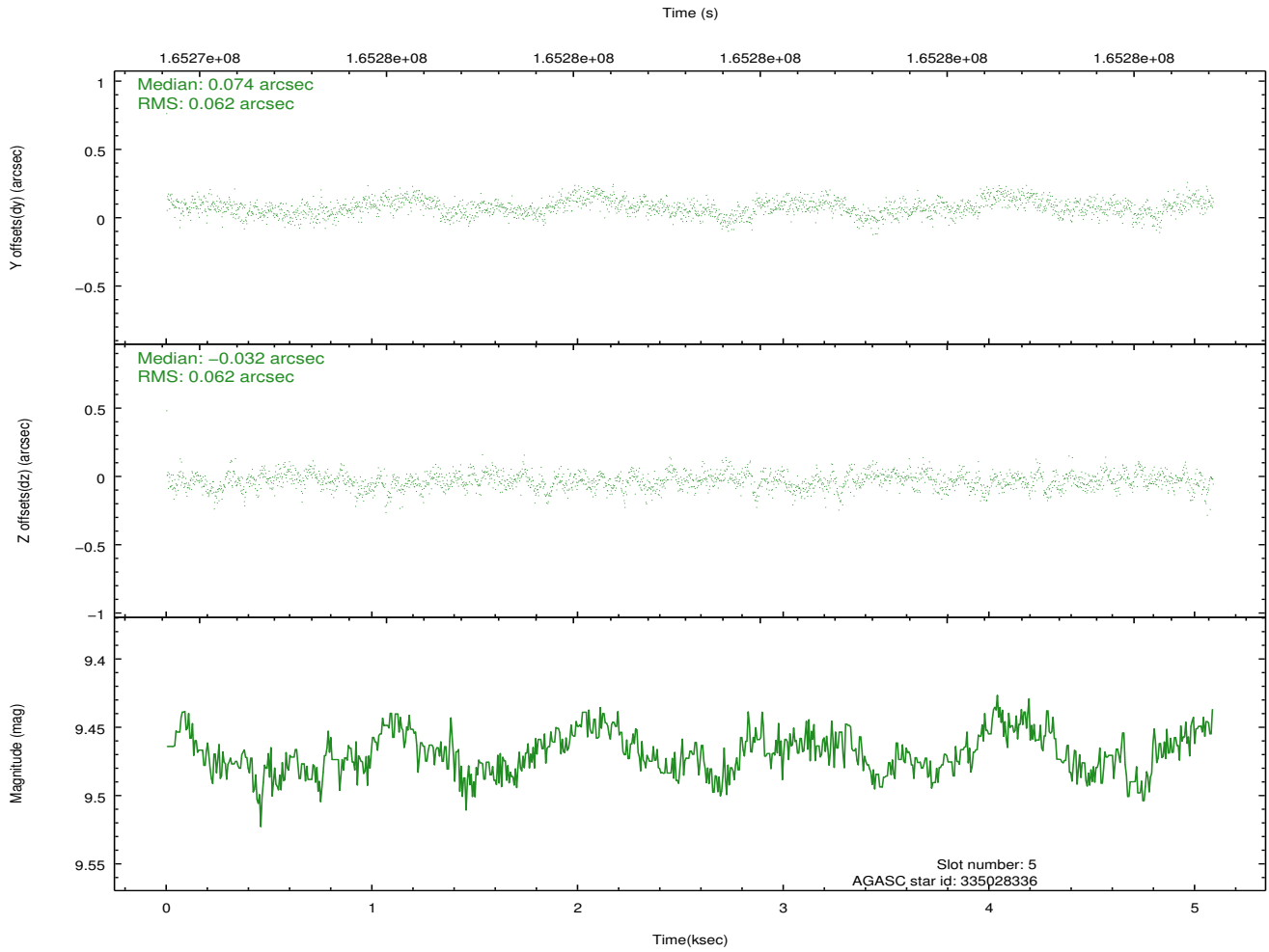
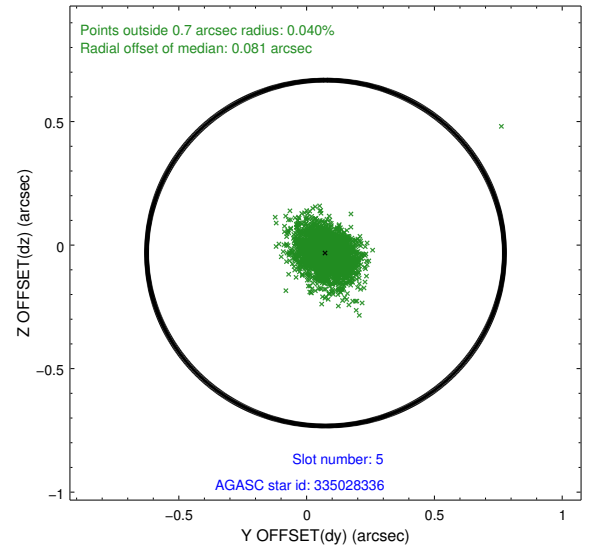
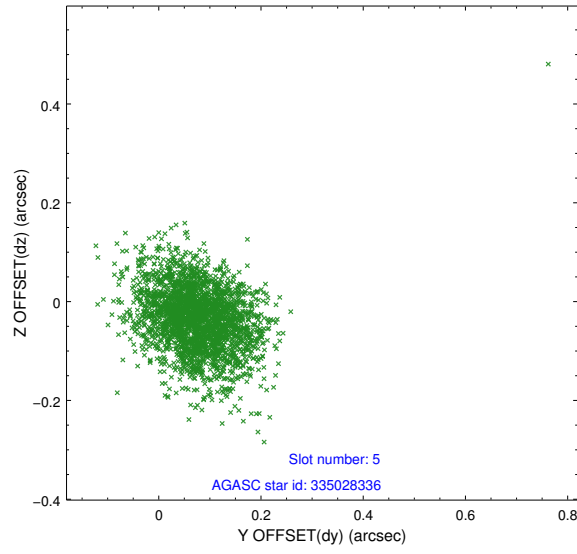
2.4.1 Slot 3



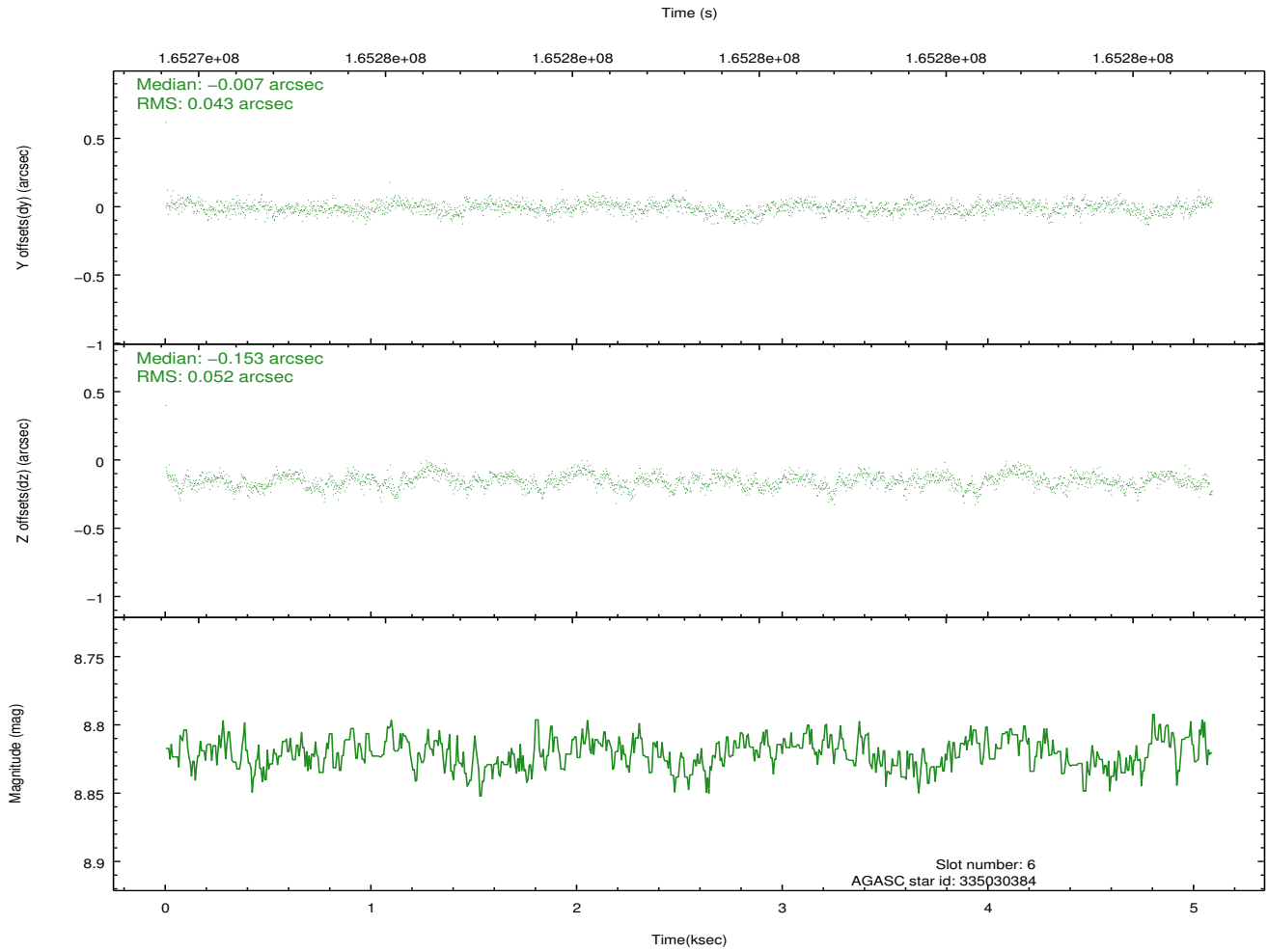
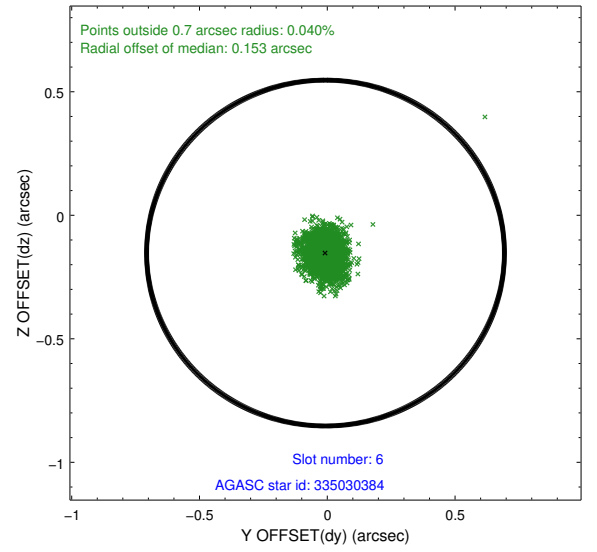
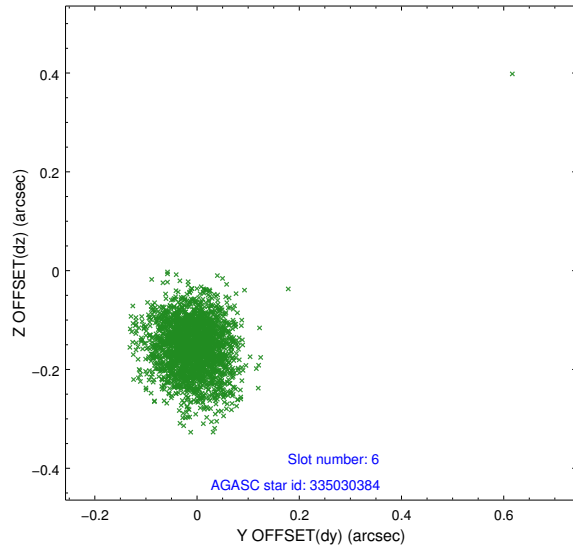
2.4.2 Slot 4



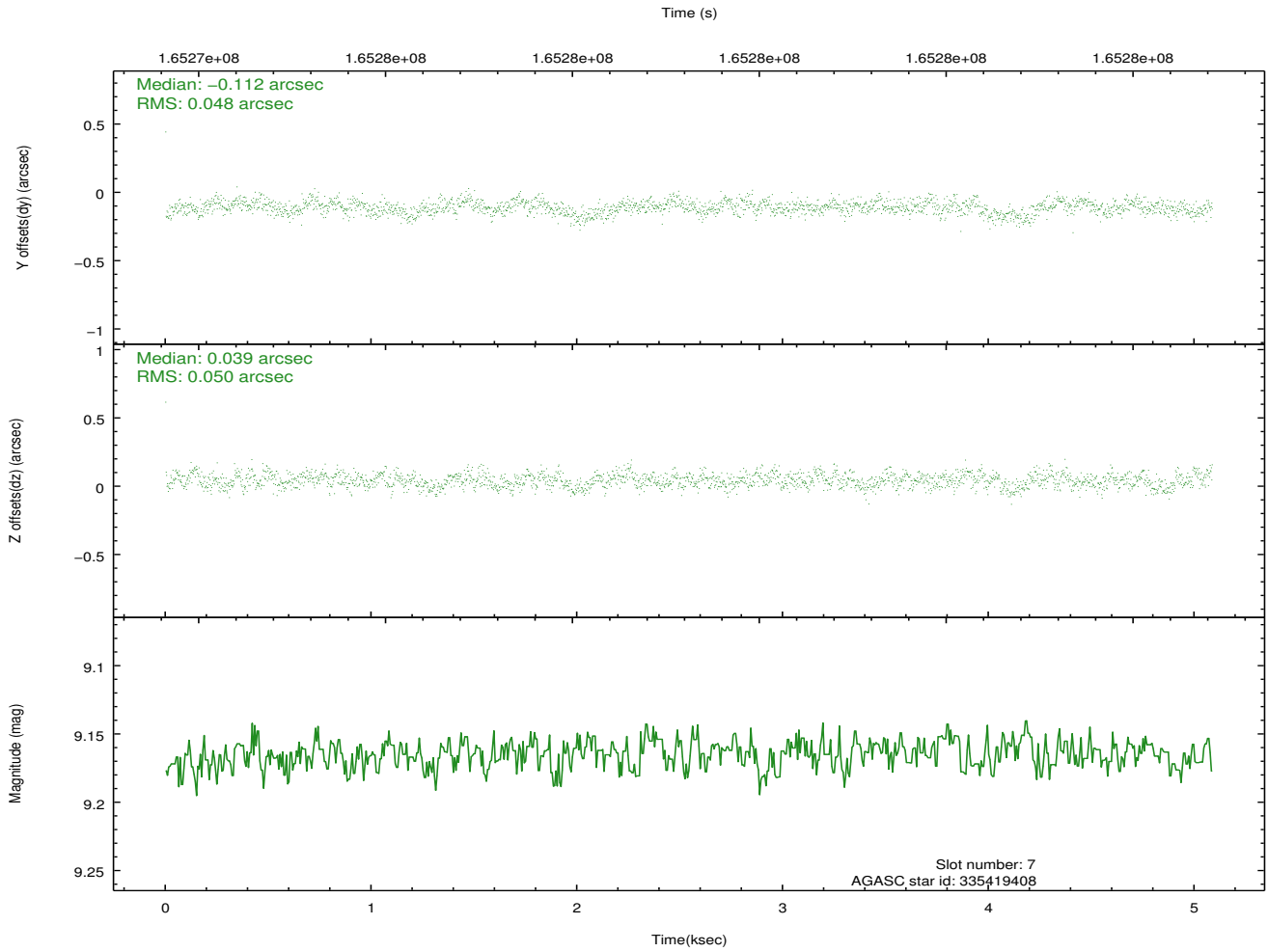
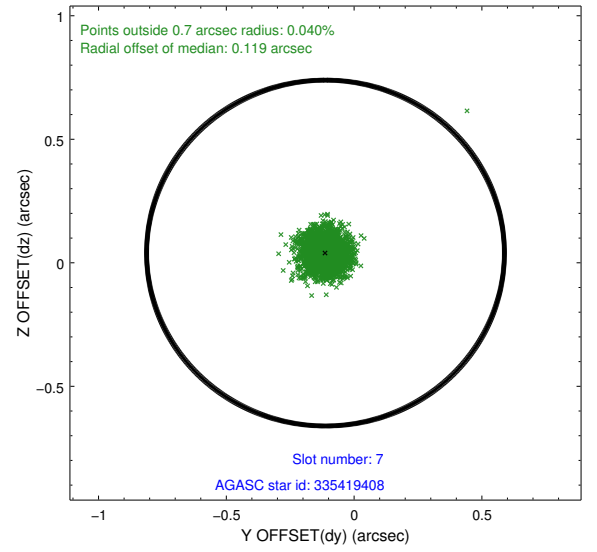
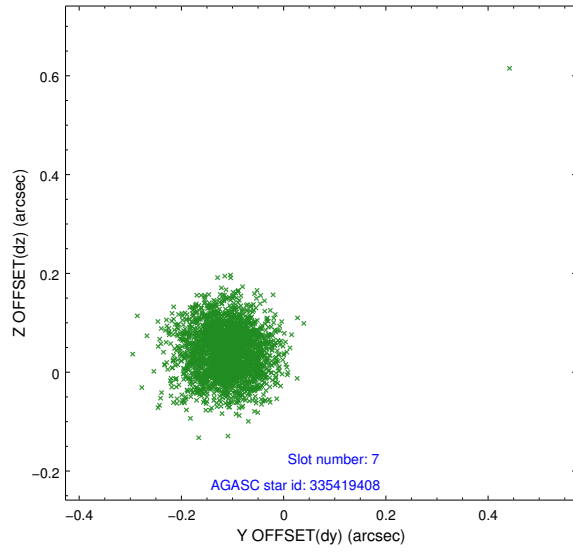
2.4.3 Slot 5



2.4.4 Slot 6

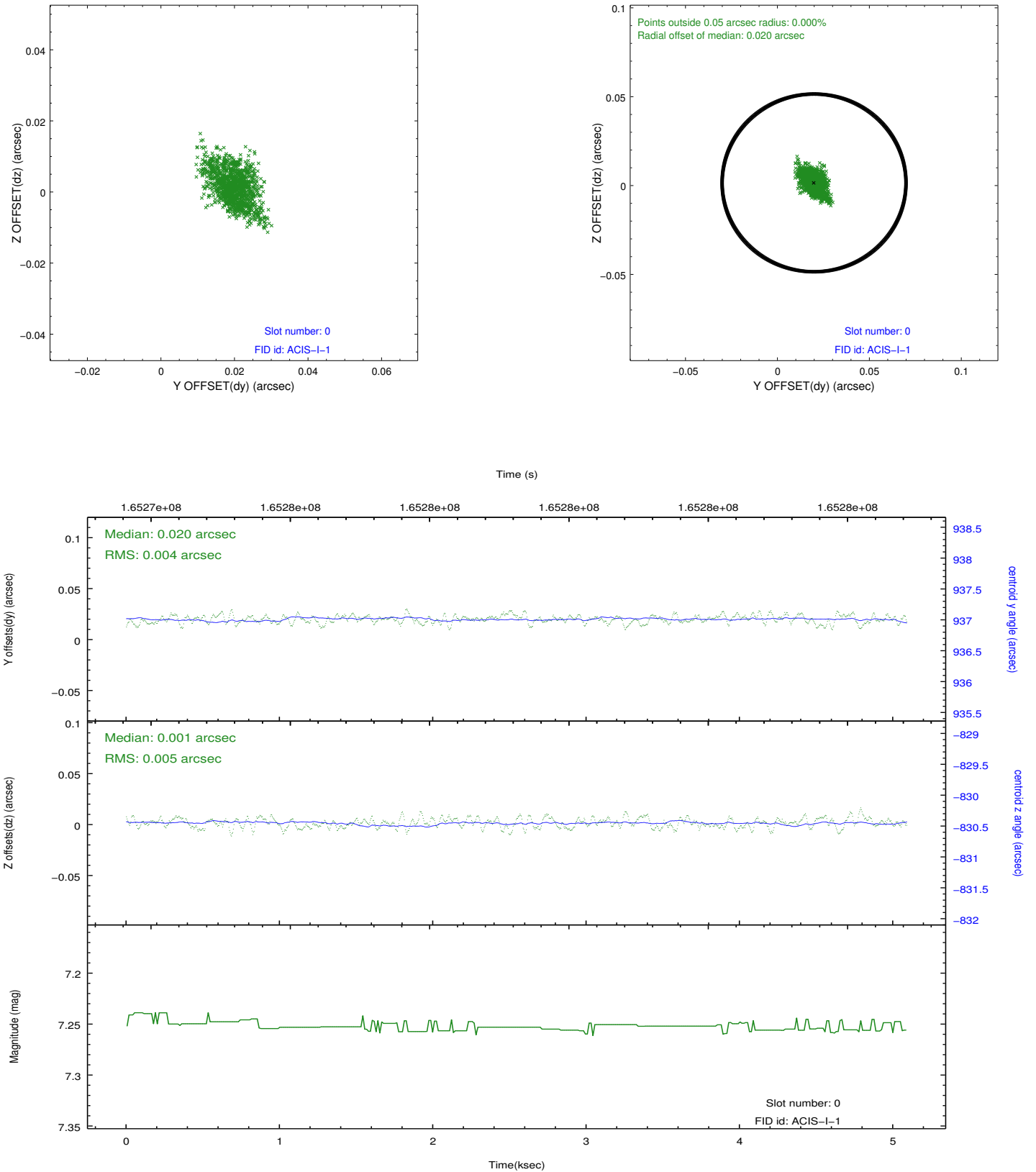


2.4.5 Slot 7

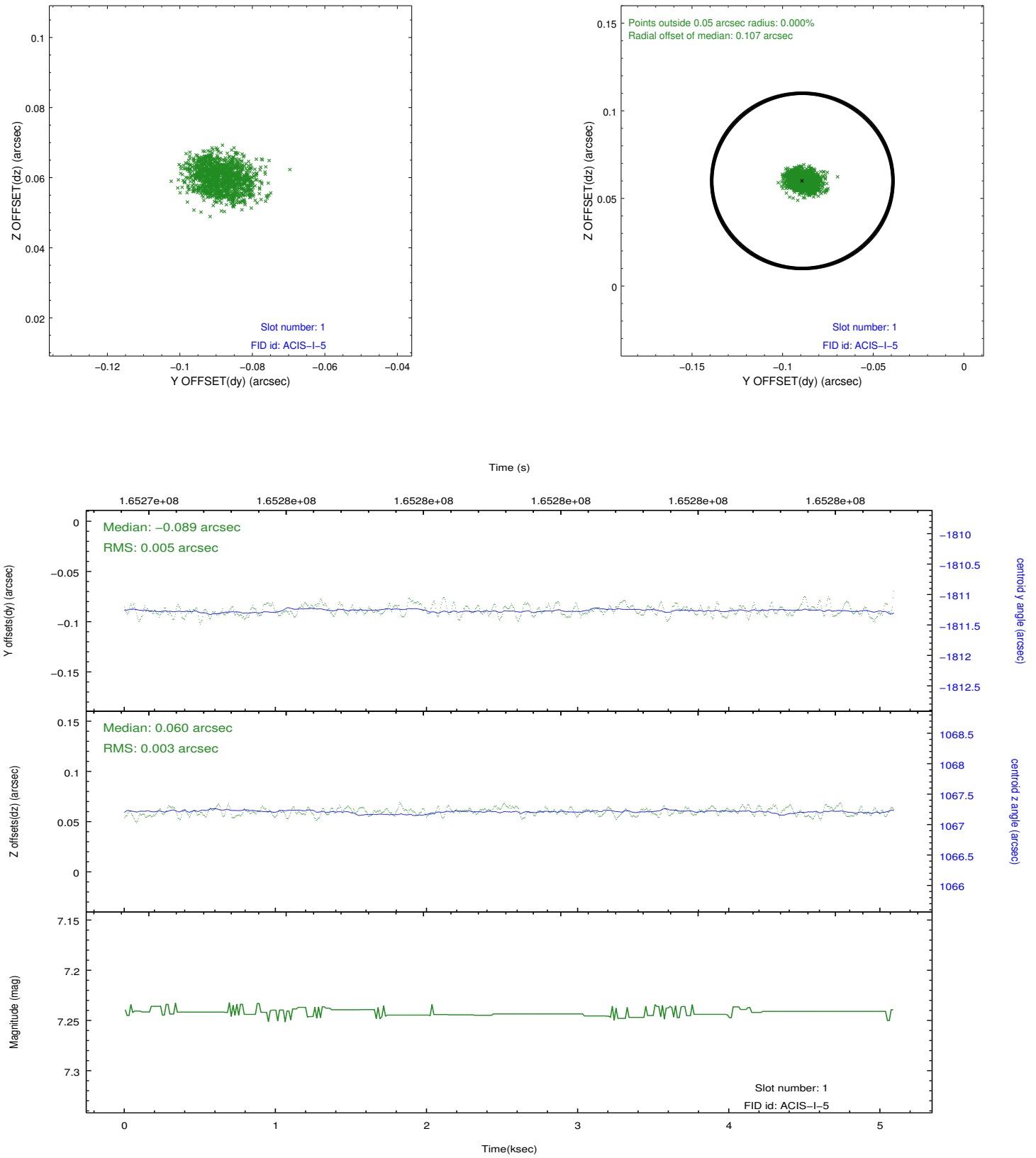


2.5 FID Slots

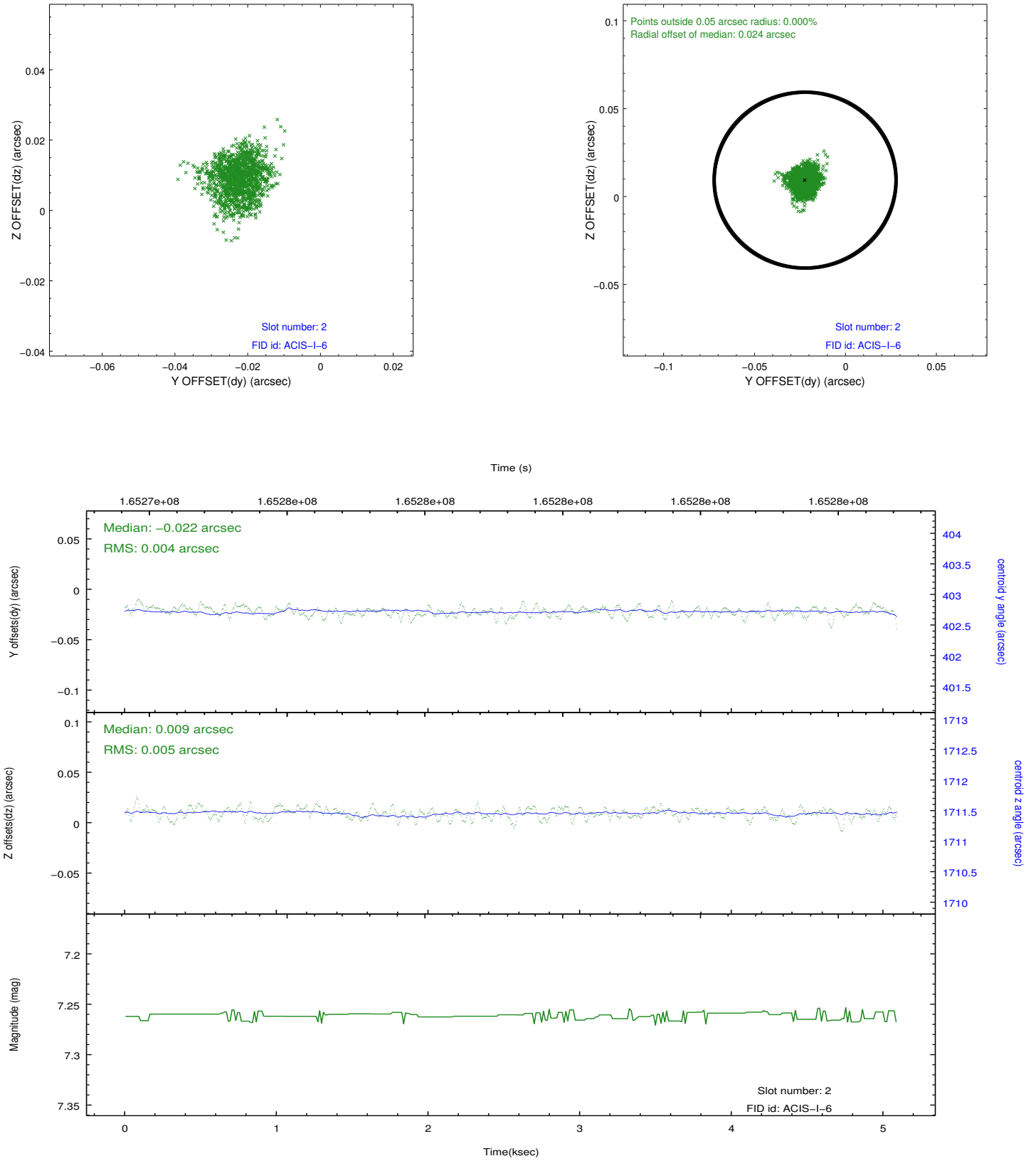
2.5.1 Slot 0



2.5.2 Slot 1



2.5.3 Slot 2



A Summary

A.1 Status

V&V Scientist	Jen Lauer
V&V Date (YYYY-MM-DD)	2012.11.09
V&V Edition	1
V&V Disposition and Status	OK
V&V Charge Time	4.674

A.2 Comments