

# V&V Reference Report

## L2 ASCDS Version : 7.6.8

Observation 3588 - L2 Version 001  
Chandra X-Ray Center

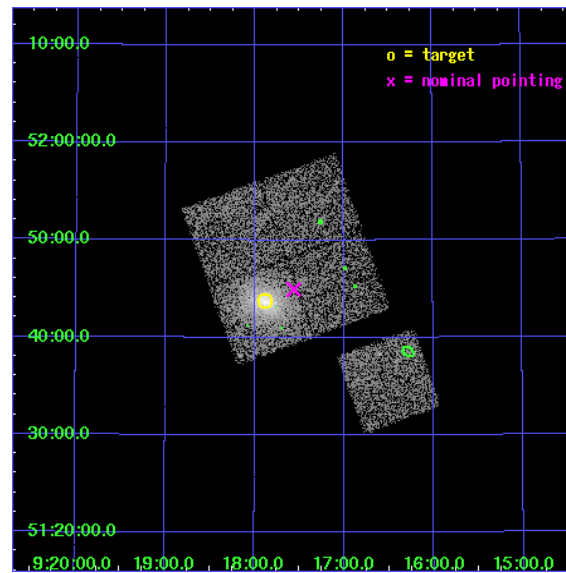
L2 Processing Date : Jul 19 2006

## Contents

<b>1</b>	<b>Front</b>	<b>2</b>
<b>2</b>	<b>OBI</b>	<b>3</b>
2.1	OBI . . . . .	3
2.1.1	Images . . . . .	3
2.1.2	Bias . . . . .	3
2.1.3	Parameters . . . . .	4
2.1.4	Events . . . . .	4
2.2	Compared Parameters . . . . .	5
2.3	Aspect . . . . .	6
2.4	Star Slots . . . . .	9
2.4.1	Slot 3 . . . . .	9
2.4.2	Slot 4 . . . . .	10
2.4.3	Slot 5 . . . . .	11
2.4.4	Slot 6 . . . . .	12
2.4.5	Slot 7 . . . . .	13
2.5	FID Slots . . . . .	14
2.5.1	Slot 0 . . . . .	14
2.5.2	Slot 1 . . . . .	15
2.5.3	Slot 2 . . . . .	16
<b>3</b>	<b>Point Sources</b>	<b>17</b>
<b>A</b>	<b>Summary</b>	<b>18</b>
A.1	Status . . . . .	18
A.2	Comments . . . . .	18

# 1 Front

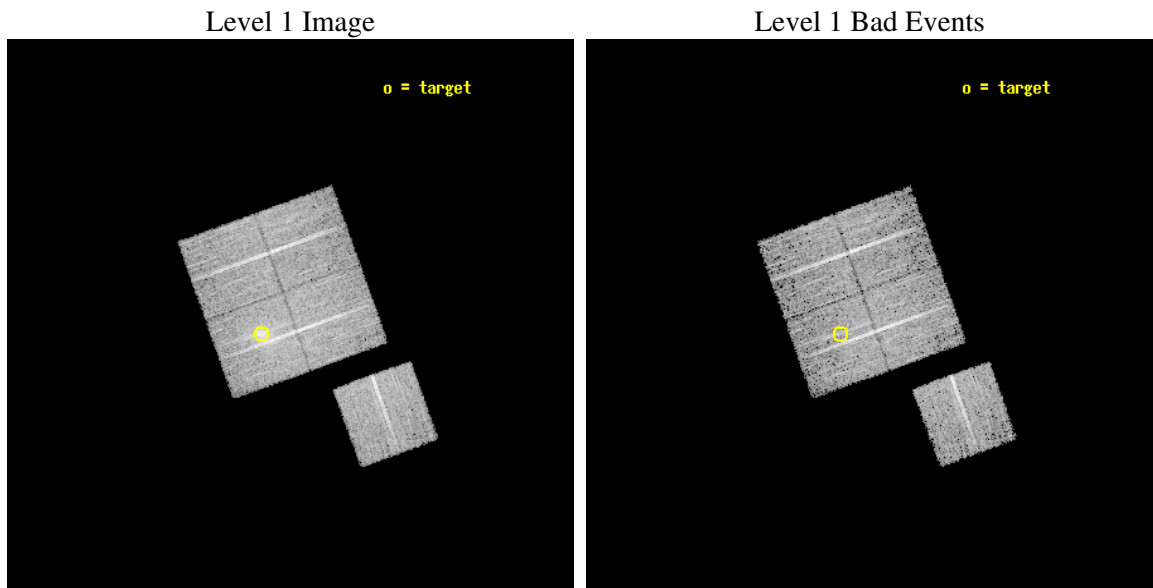
seq_num	800309
obs_id	3588
title	X-RAY/SZ DETERMINATION OF COSMOLOGICAL PARAMETERS
observer	DR. LEON VANSPEYBROECK
object	A773
dtcycle	0
cycle	P
ra_targ	139.47125
dec_targ	51.728889
ra_nom	139.38989969151
dec_nom	51.749177437689
roll_nom	160.20960854437
revision	2
ontime	9523.1999816895
livetime	9398.7723630508
ontime0	9523.1999816895
ontime1	9520.0589815378
ontime2	9523.1999816895
ontime3	9523.1999816895
ontime6	9523.1999816895
l2events	28178



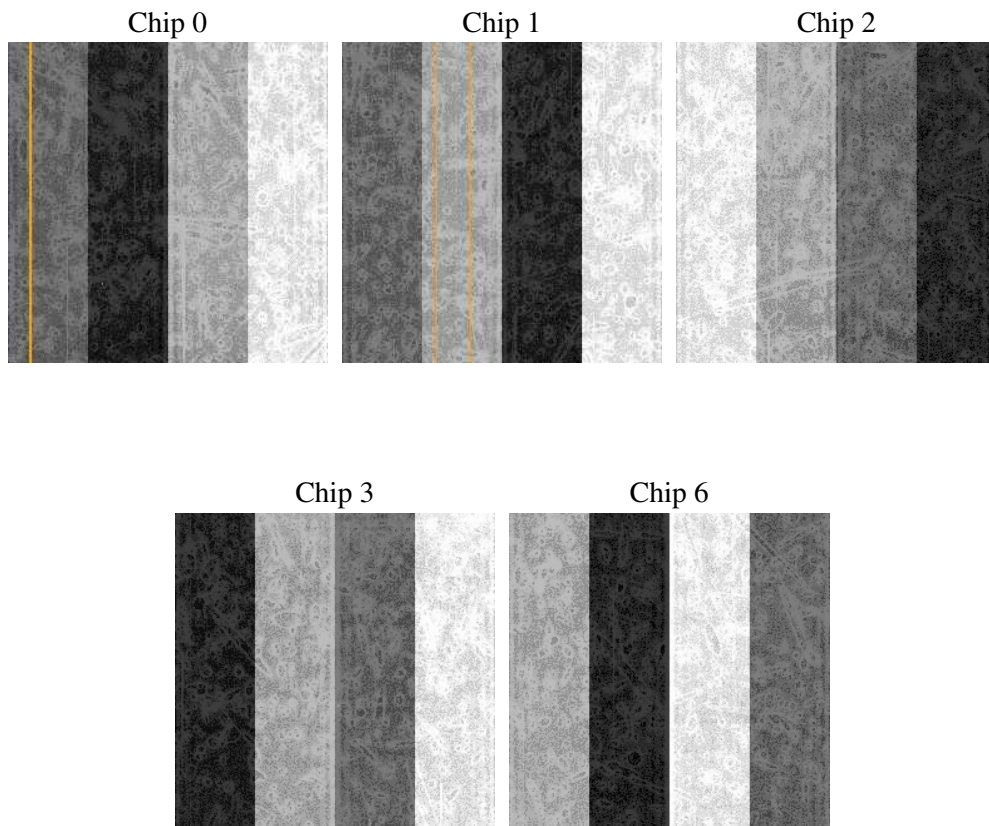
## 2 OBI

### 2.1 OBI

#### 2.1.1 Images



#### 2.1.2 Bias



### 2.1.3 Parameters

obi_num	0
ascdsver	7.6.8
caldsver	3.2.2
date	2006-07-19T10:24:43
revision	2

sched_exp_time	9401.764000
ontime	9526.6844695807
ontime0	9526.6844894886
ontime1	9523.543469429
ontime2	9526.6844695807
ontime3	9526.6844695807
ontime6	9526.6844695807
l1events	249160

### 2.1.4 Events

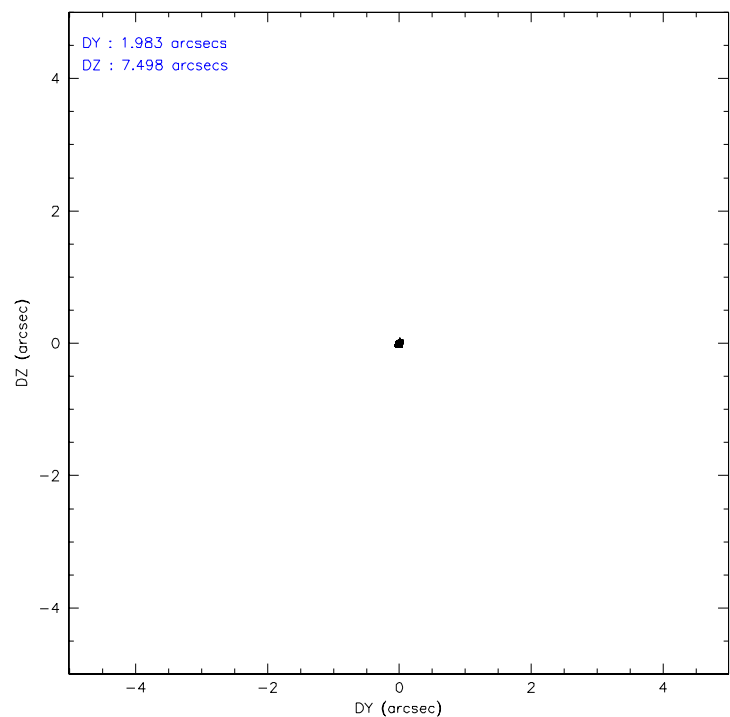
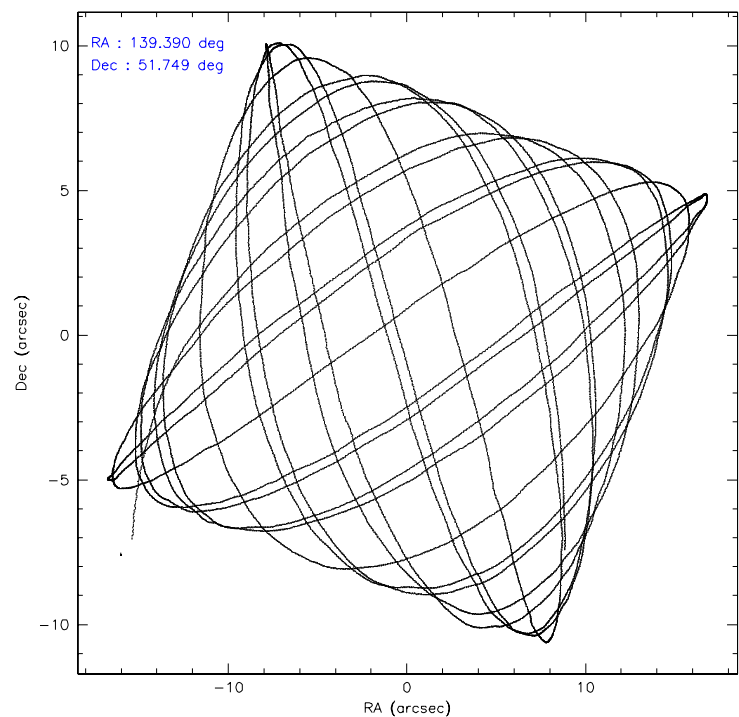
	ccd 0	ccd 1	ccd 2	ccd 3	ccd 6
level 1 events	45656	46360	51752	55776	49616
rejected events	40774	40808	47022	43342	44699
rejected %	89%	88%	90%	77%	90%

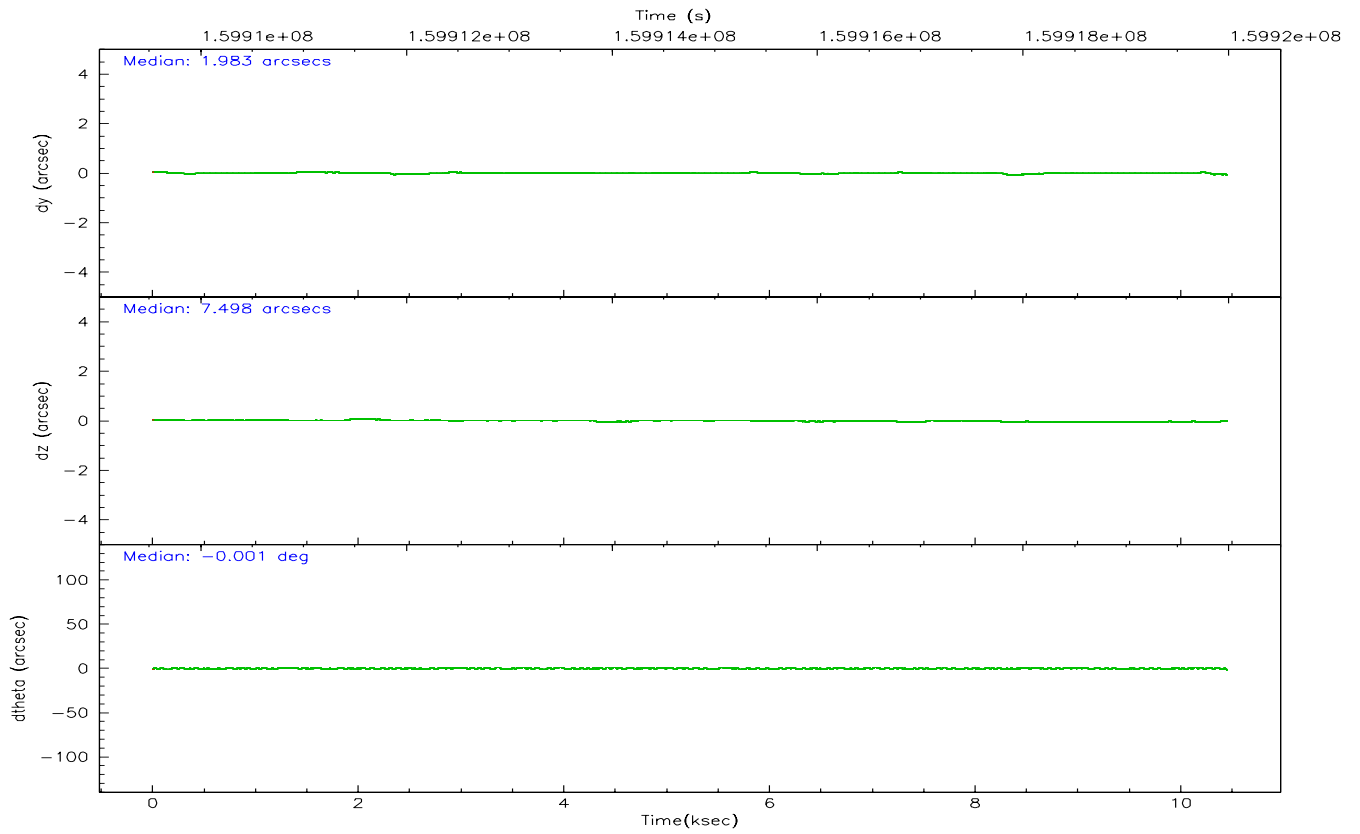
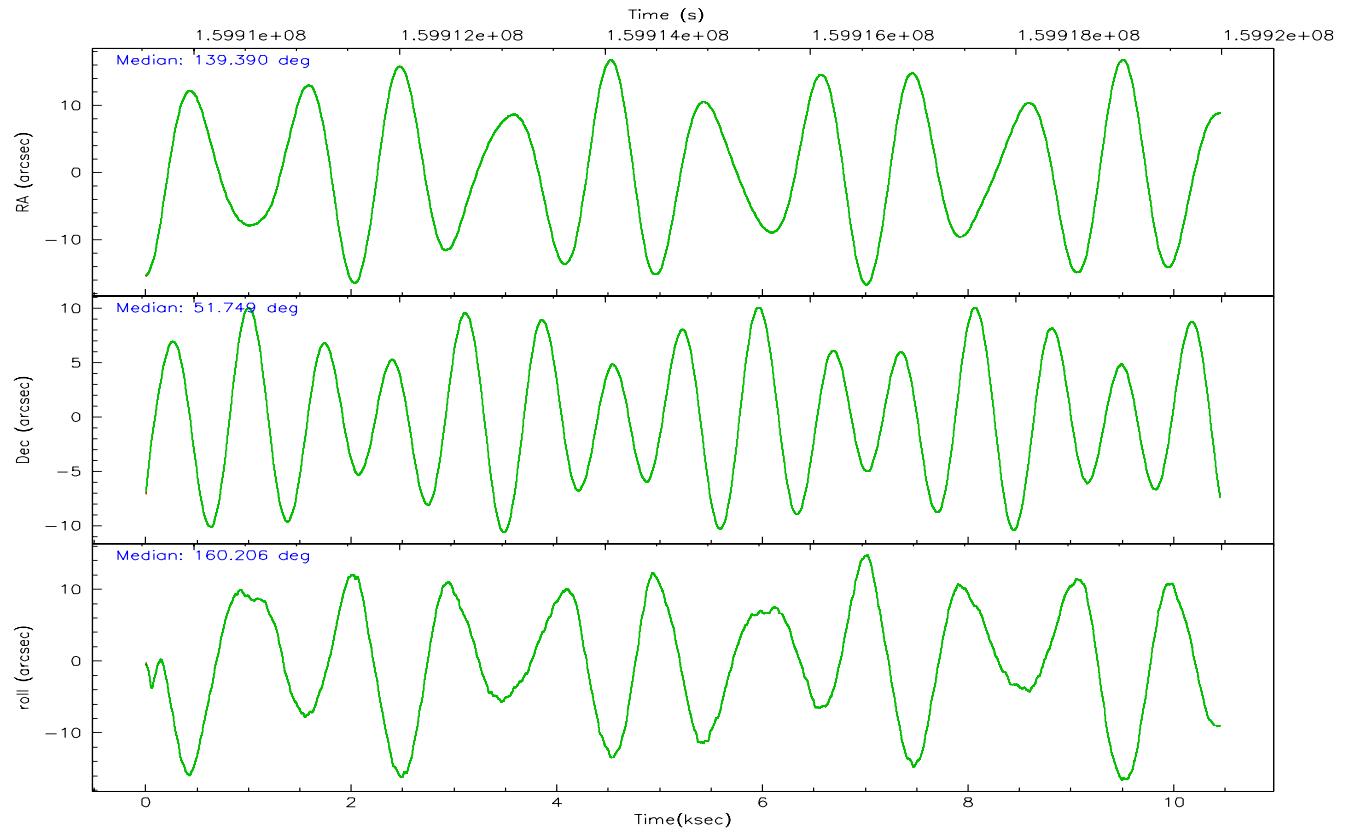
	ccd 0	ccd 1	ccd 2	ccd 3	ccd 6
grade 0 events	1673	2092	1834	8110	1721
	3%	4%	3%	14%	3%
grade 1 events	20	14	40	51	14
	0%	0%	0%	0%	0%
grade 2 events	1089	1126	1027	1728	1020
	2%	2%	1%	3%	2%
grade 3 events	580	652	548	788	583
	1%	1%	1%	1%	1%
grade 4 events	573	605	522	774	543
	1%	1%	1%	1%	1%
grade 5 events	1642	1826	1552	1861	1860
	3%	3%	2%	3%	3%
grade 6 events	969	1078	800	1038	1051
	2%	2%	1%	1%	2%
grade 7 events	39110	38967	45429	41426	42824
	85%	84%	87%	74%	86%

## 2.2 Compared Parameters

Parameter	Planned	Actual	Parameter	Planned	Actual
Instrument	ACIS	ACIS	Obspar format version number	6	6
Detector	ACIS-01236	ACIS-01236	Obspar file type	PREDICTED	ACTUAL
Grating	NONE	NONE	Obspar update status	NONE	UPDATED
Data mode	VFAINT	VFAINT	On-chip summing requested	N	N
Observation mode	POINTING	POINTING	Subarray requested	NONE	NONE
Pointing RA	139.433395	139.3898996915071	Alternating exposures requested	N	N
Pointing Dec	51.754122	51.74917743768925	Primary exposure time	0.000000	3.1
Pointing Roll	159.966764	160.209608544375			
SIM focus pos (mm)	-0.782348	-0.7809083437167272			
SIM defocus (mm)	0	0.001439871863259334			
SIM translation stage pos (mm)	-225.840463	-225.8433433320239			
SIM translation stage offset (mm)	-7.752	-7.749109670905796			
Observation start time	159910587.184000	159909197.58193			
Observation start date	2003-01-25T19:35:23	2003-01-25T19:13:17			
Observation end time	159919988.184000	159920302.9449			
Observation end date	2003-01-25T22:12:04	2003-01-25T22:18:22			
Read mode	TIMED	TIMED			

## 2.3 Aspect





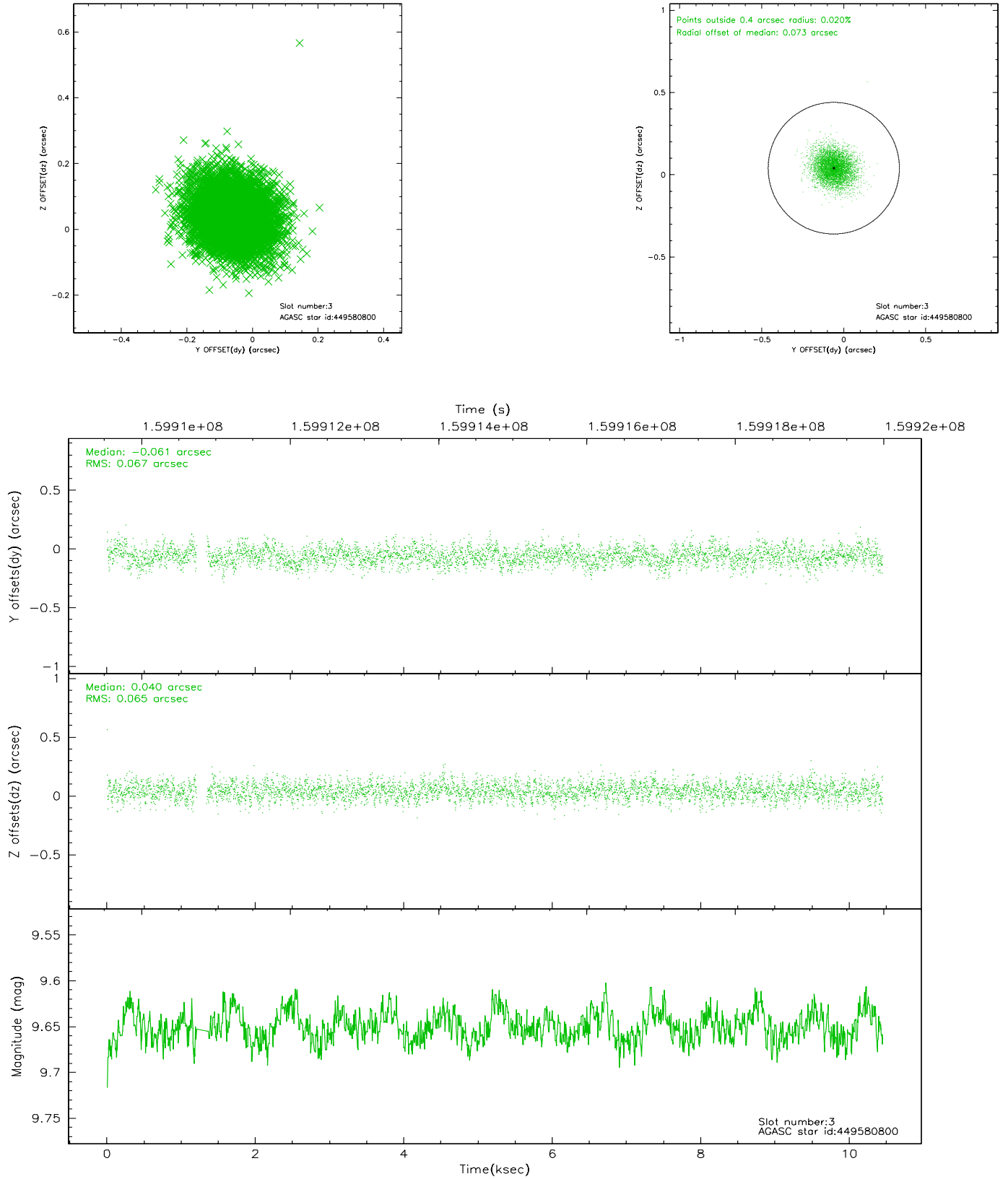
### Slot Statistics

slot	status	id	mag	n_pts	med_dy	med_dz	dr1	dr2	ra	dec	mean_y	mean_z
0	FID	ACIS-I-1	7.23	2549	0.062	-0.023	0.006	0.010	0.000000	0.000000	937.75	-990.01
1	FID	ACIS-I-5	7.22	2549	-0.137	0.088	0.006	0.010	0.000000	0.000000	-1810.26	907.30
2	FID	ACIS-I-6	7.27	2549	-0.017	0.006	0.007	0.011	0.000000	0.000000	402.69	1552.28
3	GUIDE	449580800	9.65	5021	-0.061	0.040	0.099	0.161	138.731484	52.256174	2075.03	-1174.71
4	GUIDE	449708784	9.27	5097	0.060	0.027	0.085	0.136	139.281247	51.322176	-210.33	1577.97
5	GUIDE	449712984	8.75	5095	-0.036	-0.139	0.086	0.138	139.803051	51.633381	-924.17	123.81
6	GUIDE	449713472	9.47	5095	-0.002	0.089	0.110	0.168	140.340736	52.203366	-1322.41	-2216.65
7	GUIDE	498865336	9.20	5095	0.040	-0.013	0.111	0.179	139.050858	52.564533	1786.83	-2456.32

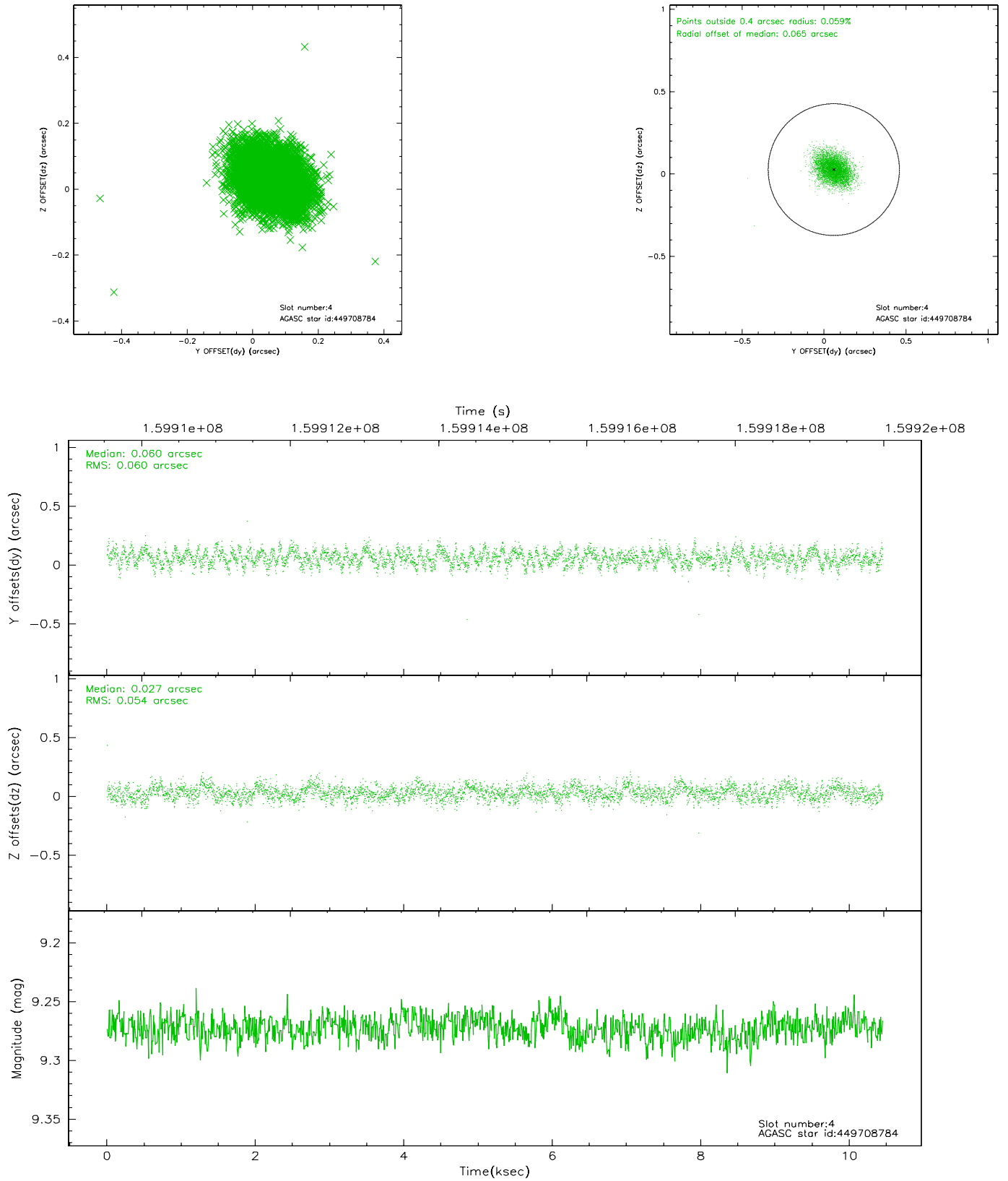


## 2.4 Star Slots

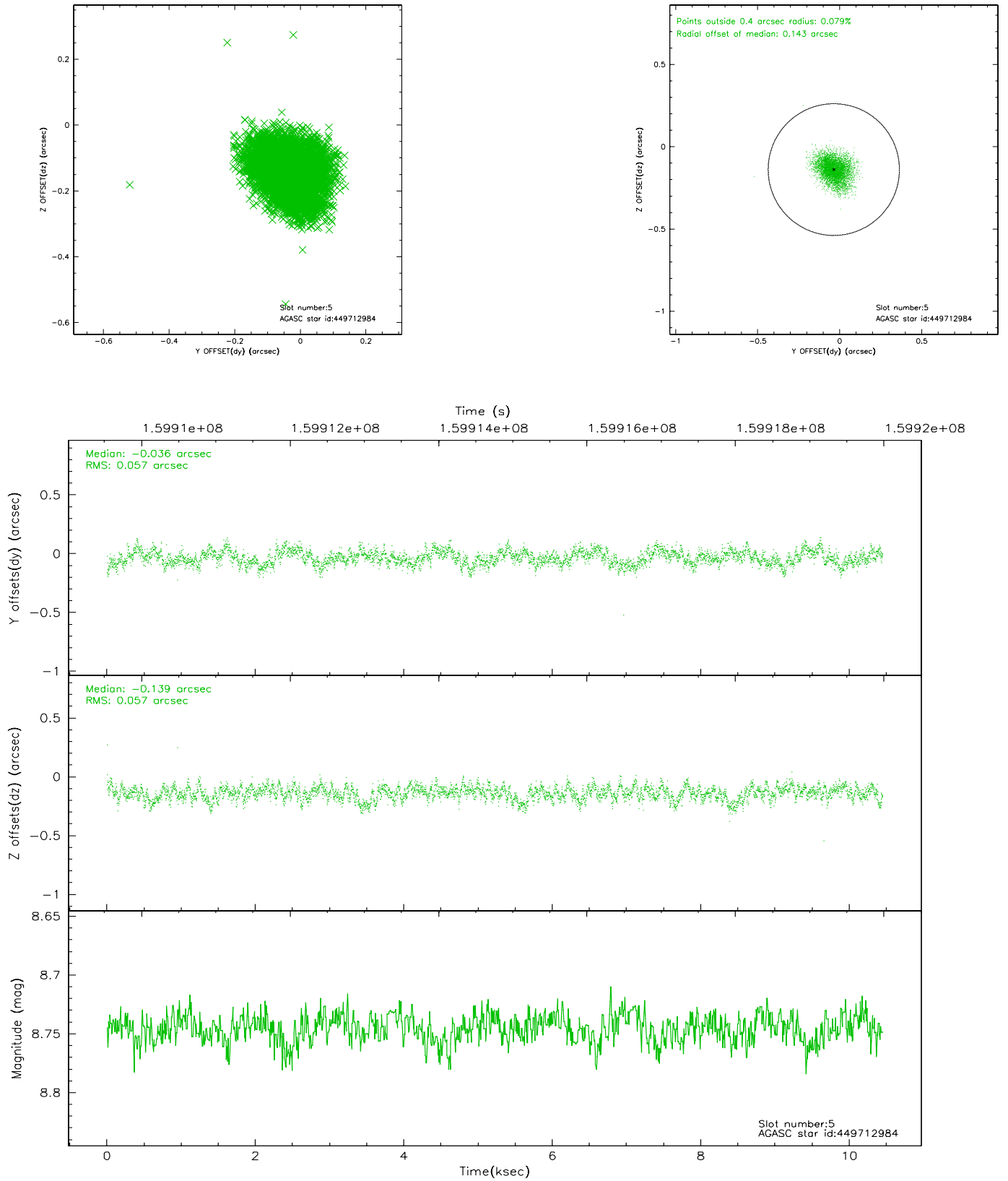
### 2.4.1 Slot 3



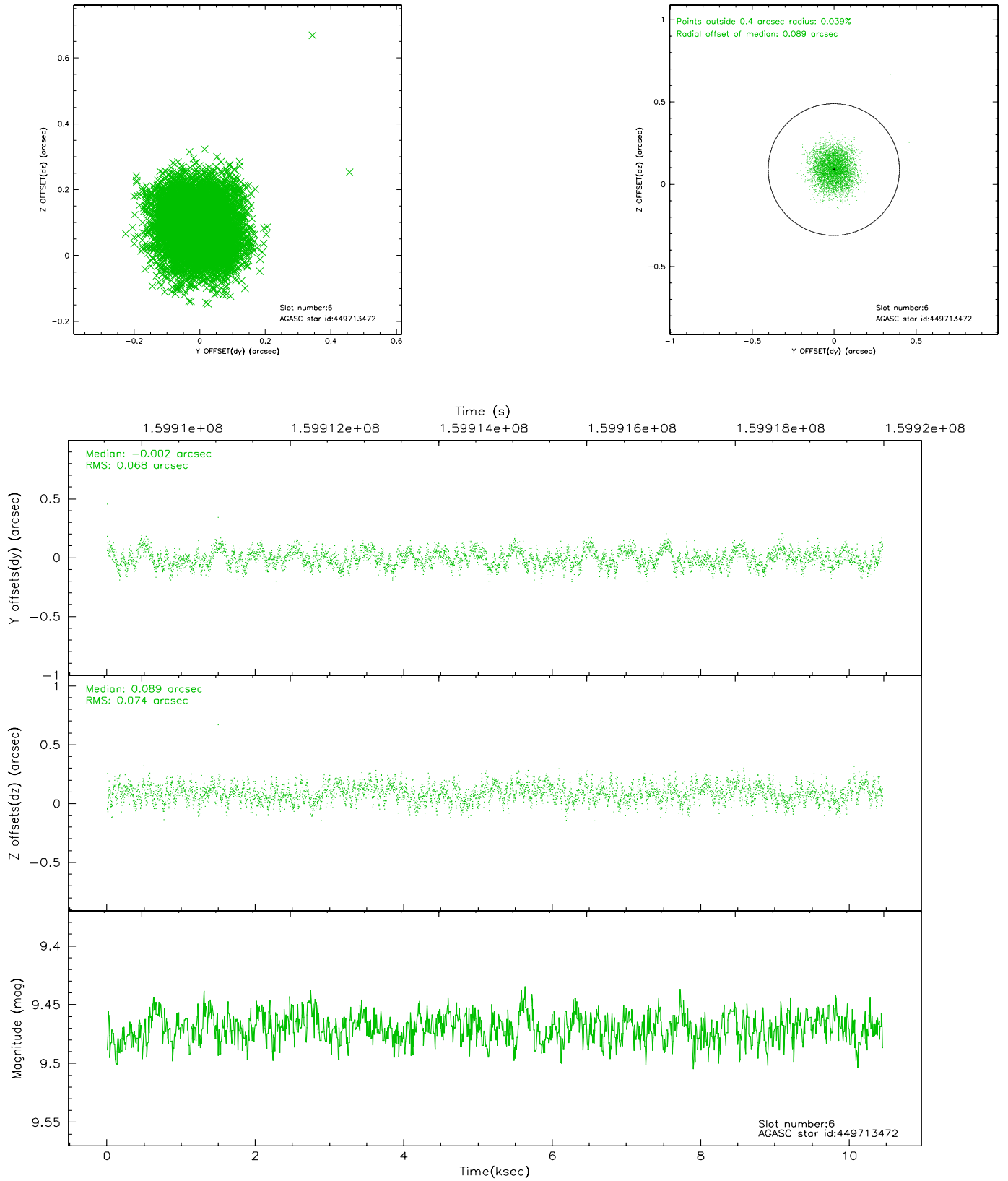
## 2.4.2 Slot 4



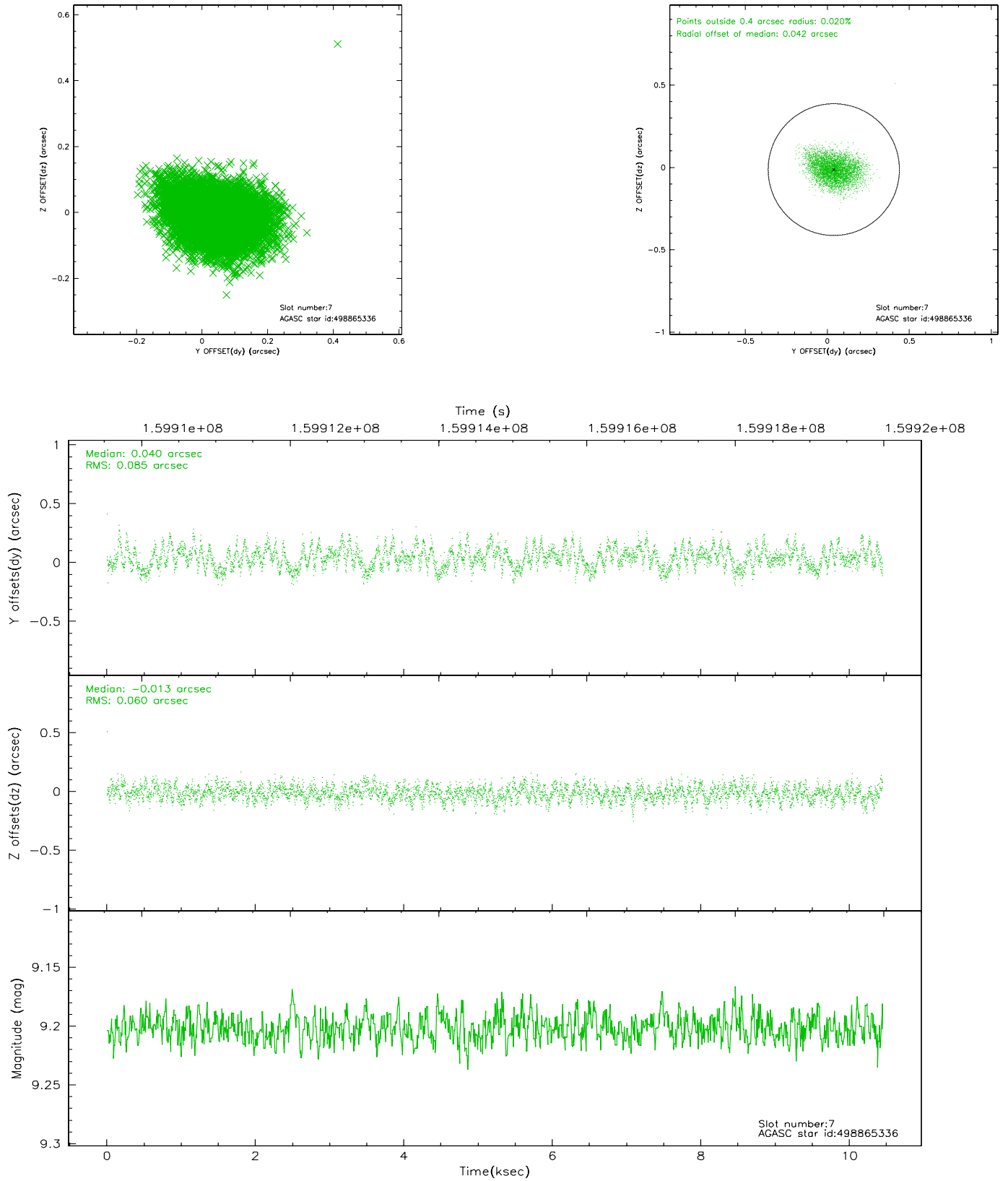
### 2.4.3 Slot 5



## 2.4.4 Slot 6

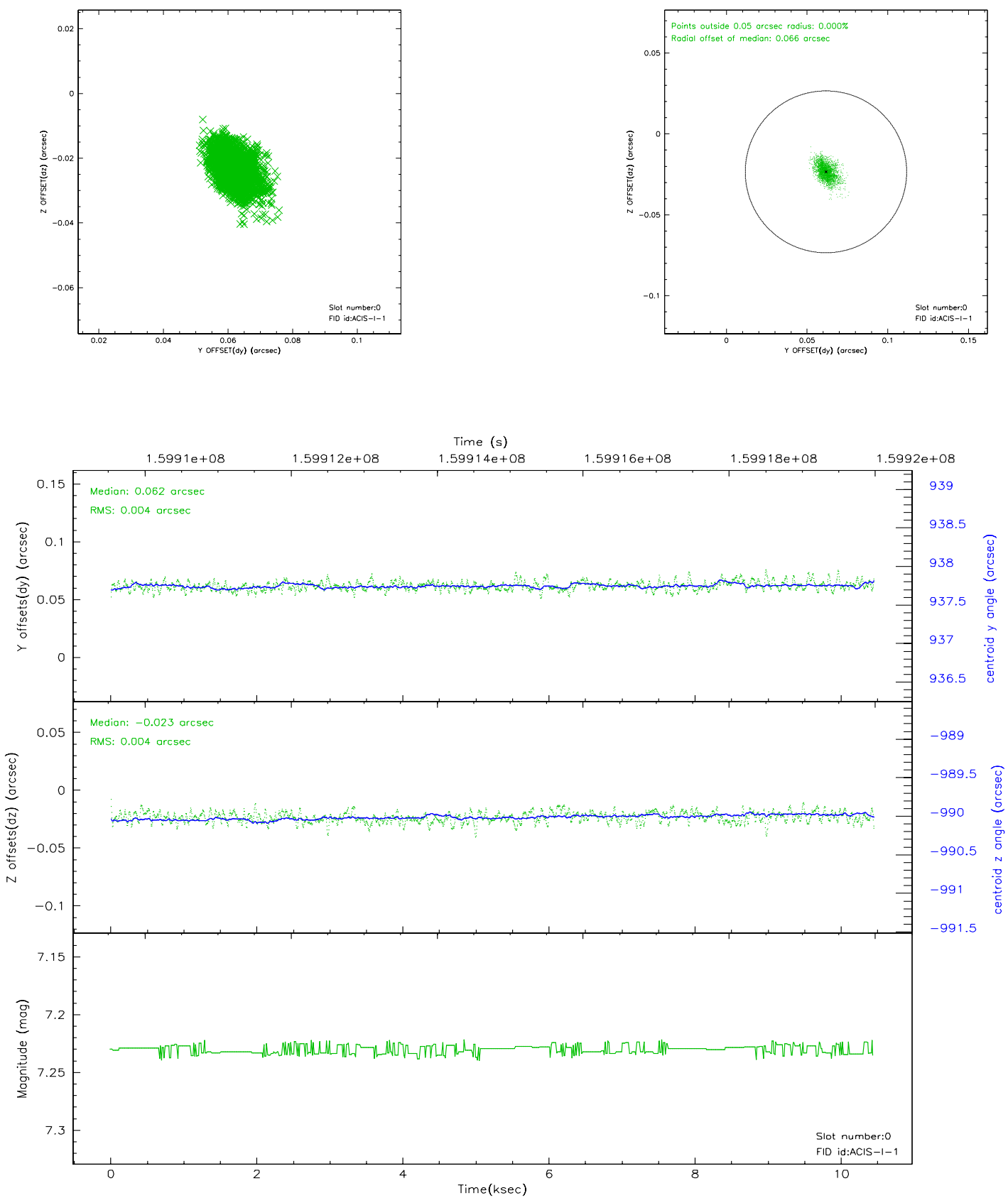


## 2.4.5 Slot 7

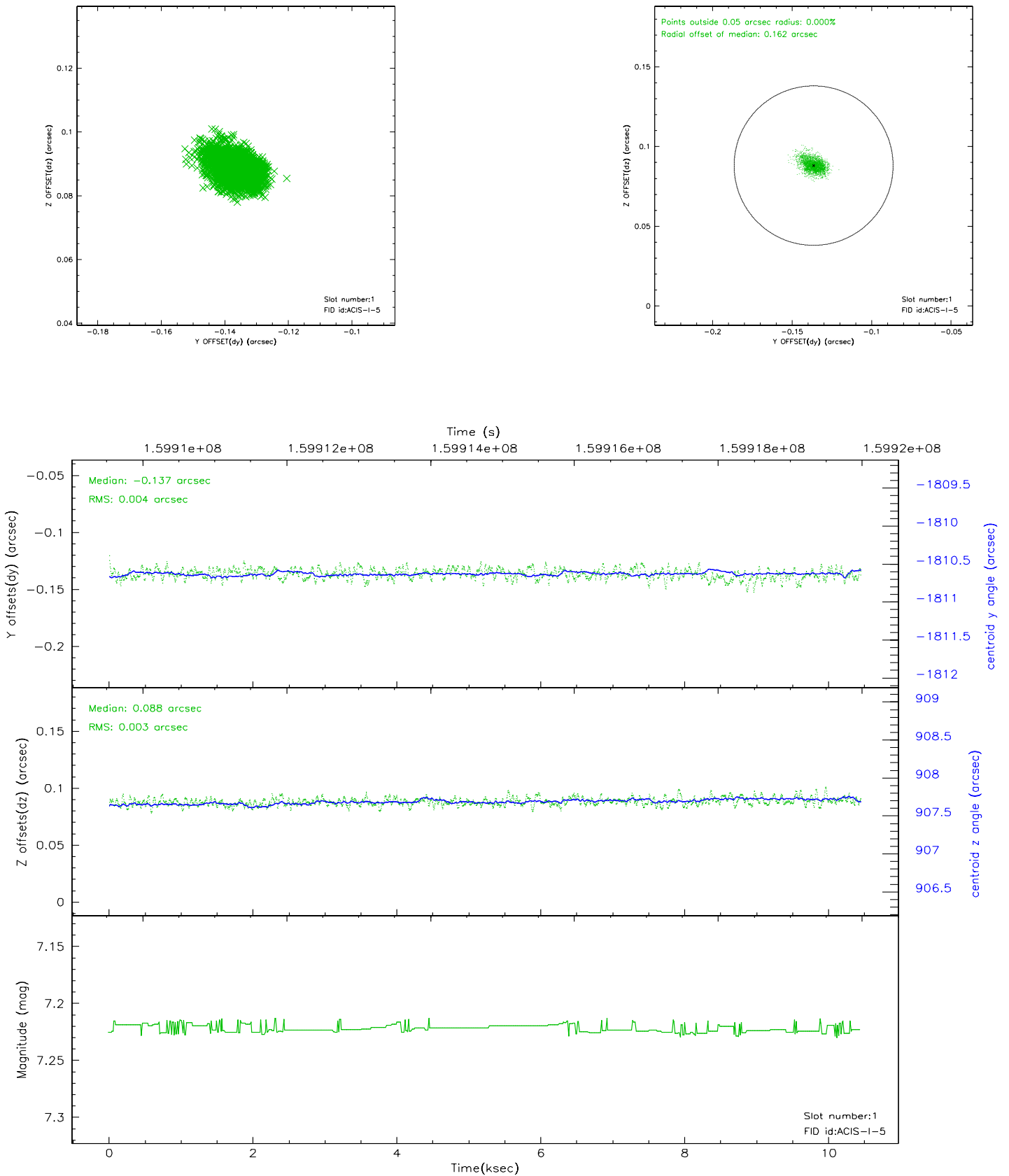


## 2.5 FID Slots

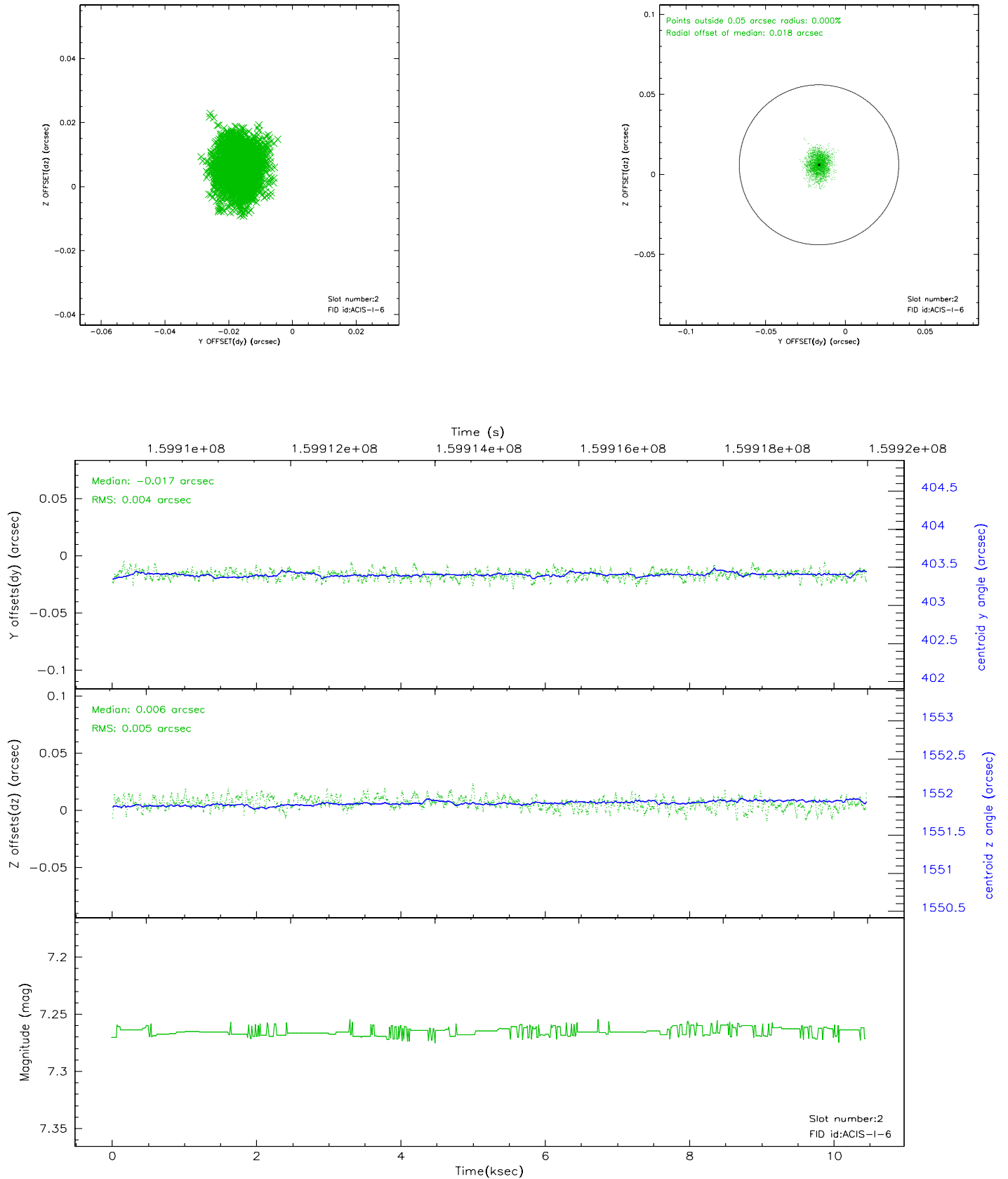
### 2.5.1 Slot 0



## 2.5.2 Slot 1

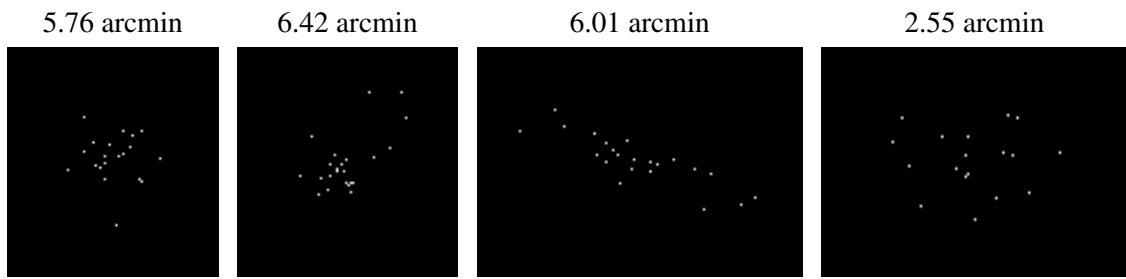


### 2.5.3 Slot 2





### 3 Point Sources



# A Summary

## A.1 Status

V&V Scientist	Jen Lauer
V&V Date (YYYY-MM-DD)	2006.07.19
V&V Edition	1
V&V Disposition and Status	OK
V&V Charge Time	9.523

## A.2 Comments

The ACIS focal plane temperature was above calibration limits for the entire observation.

The ACIS spectral response calibration is less accurate at these warmer temperatures than it is at -119.7 C. Users whose science objectives depend on the most accurate spectral response (ie: fitting line-rich spectra) may notice an effect. Users whose science objectives do not depend on the most accurate spectral response should not notice an effect.