

V&V Reference Report

L2 ASCDS Version : 7.6.8

Observation 3538 - L2 Version 001
Chandra X-Ray Center

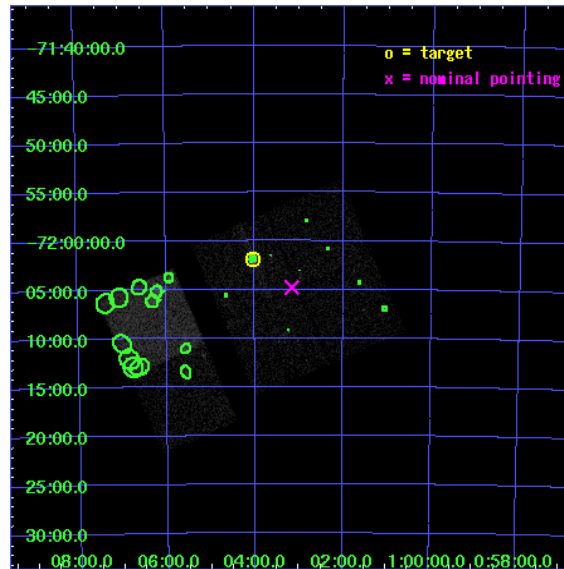
L2 Processing Date : Jul 20 2006

Contents

1	Front	2
2	OBI	3
2.1	OBI	3
2.1.1	Images	3
2.1.2	Bias	3
2.1.3	Parameters	4
2.1.4	Events	4
2.2	Compared Parameters	5
2.3	Aspect	6
2.4	Star Slots	9
2.4.1	Slot 3	9
2.4.2	Slot 4	10
2.4.3	Slot 5	11
2.4.4	Slot 6	12
2.4.5	Slot 7	13
2.5	FID Slots	14
2.5.1	Slot 0	14
2.5.2	Slot 1	15
2.5.3	Slot 2	16
3	Point Sources	17
A	Summary	18
A.1	Status	18
A.2	Comments	18

1 Front

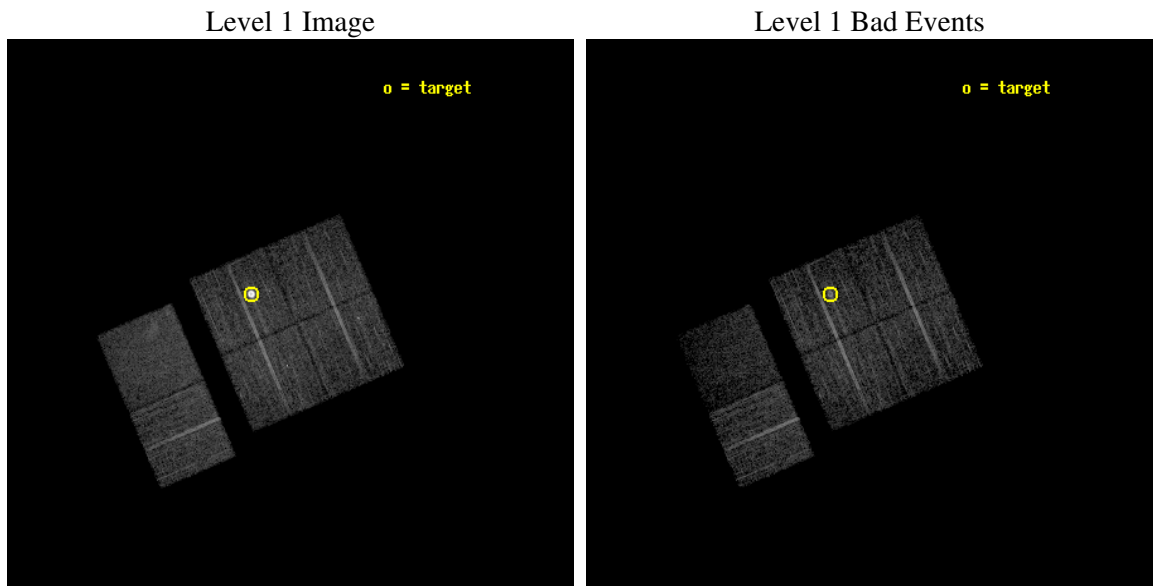
seq_num	590293
obs_id	3538
title	AO4A ACIS-I CALIBRATION OBSERVATIONS OF E0102-72
observer	Dr. CXC Calibration
object	E0102-72[I3,-120,-4.0,2.5,0]
dtcycle	0
cycle	P
ra_targ	16.01
dec_targ	-72.032028
ra_nom	15.789435136819
dec_nom	-72.079987642734
roll_nom	246.83722546972
revision	2
ontime	7731.199971199
livetime	7633.302861994
ontime0	7731.199971199
ontime1	7731.199971199
ontime2	7727.9590109289
ontime3	7731.199971199
ontime6	7731.199971199
ontime7	7731.199971199
l2events	58126



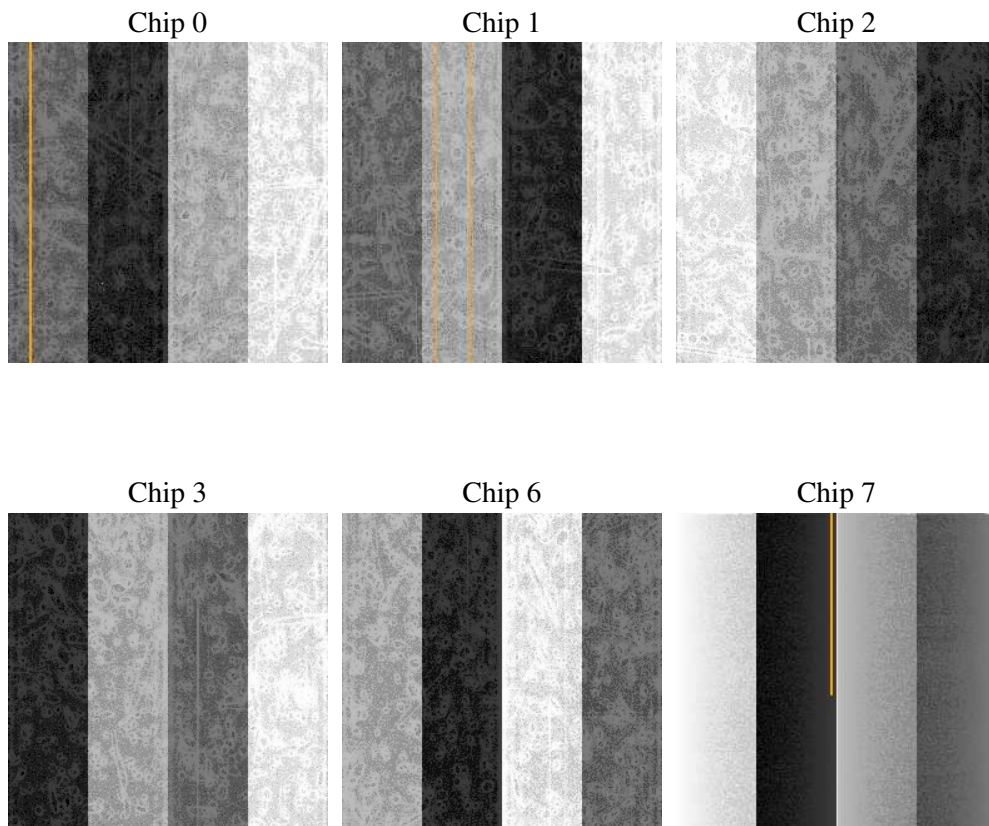
2 OBI

2.1 OBI

2.1.1 Images



2.1.2 Bias



2.1.3 Parameters

obi_num	0
ascdsver	7.6.8
caldsver	3.2.2
date	2006-07-20T14:45:01
revision	2

sched_exp_time	7973.000000
ontime	7736.2669846416
ontime0	7736.2670145631
ontime1	7736.2670145631
ontime2	7733.0260542929
ontime3	7736.2669846416
ontime6	7736.2670145631
ontime7	7736.2670145631
l1events	244226

2.1.4 Events

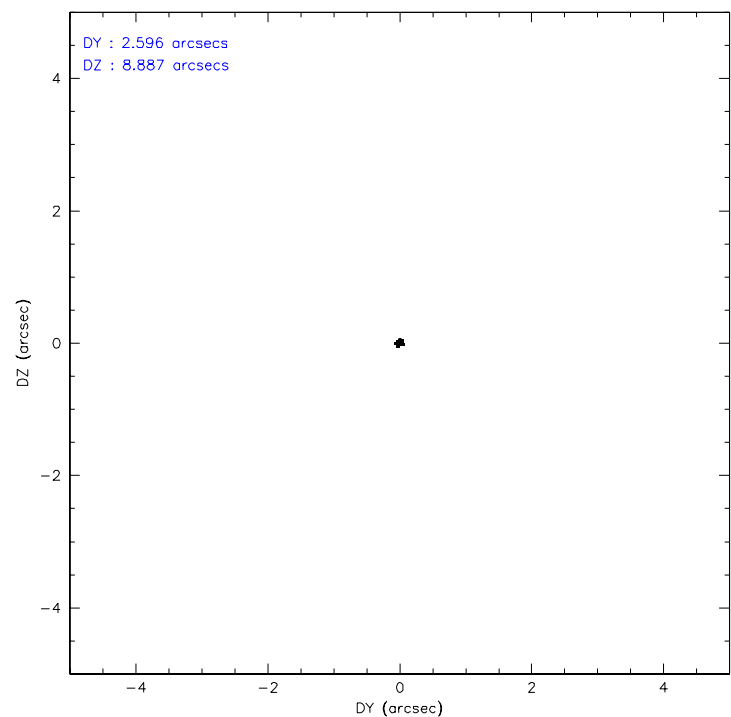
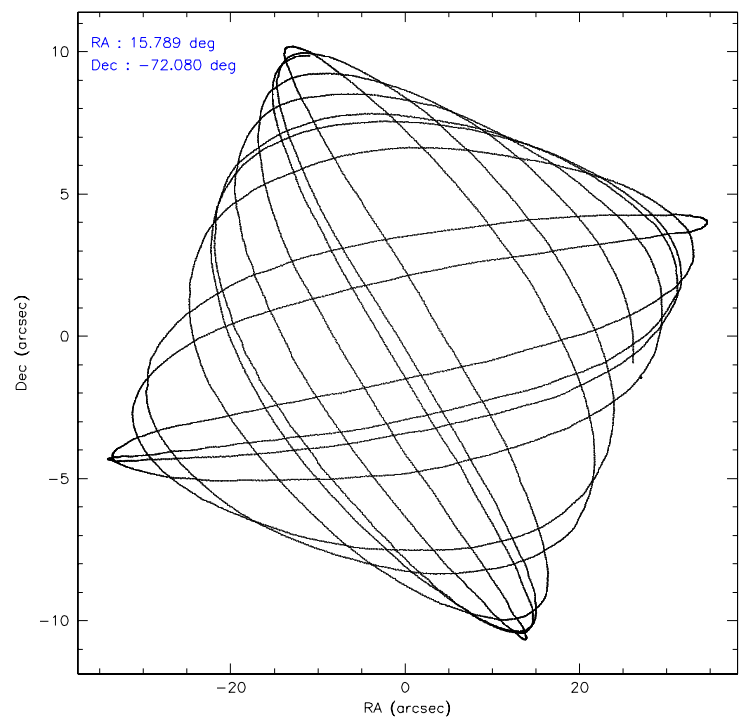
	ccd 0	ccd 1	ccd 2	ccd 3	ccd 6	ccd 7
level 1 events	35358	33122	38877	62587	38414	35868
rejected events	31263	28876	34540	33631	34127	18352
rejected %	88%	87%	88%	53%	88%	51%

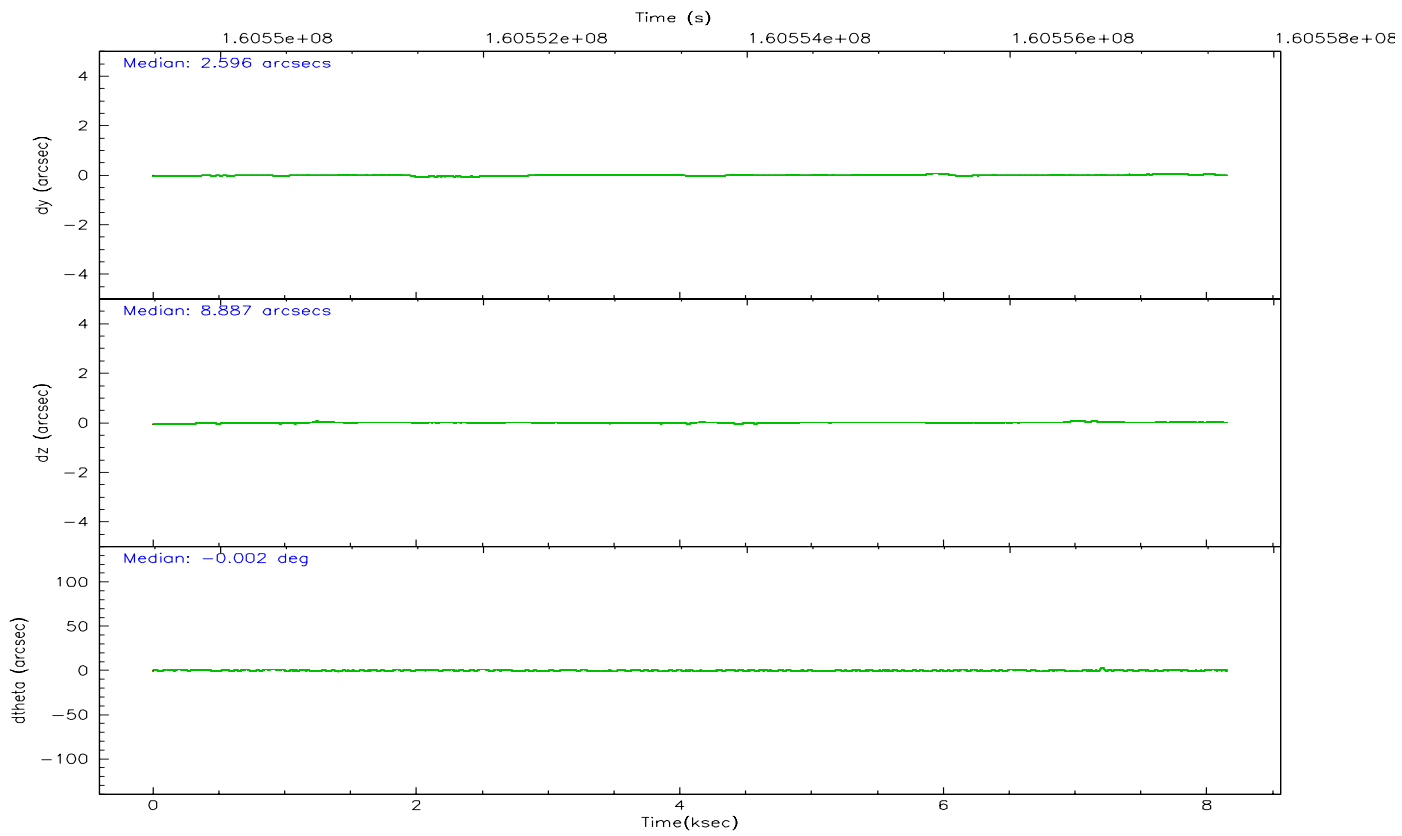
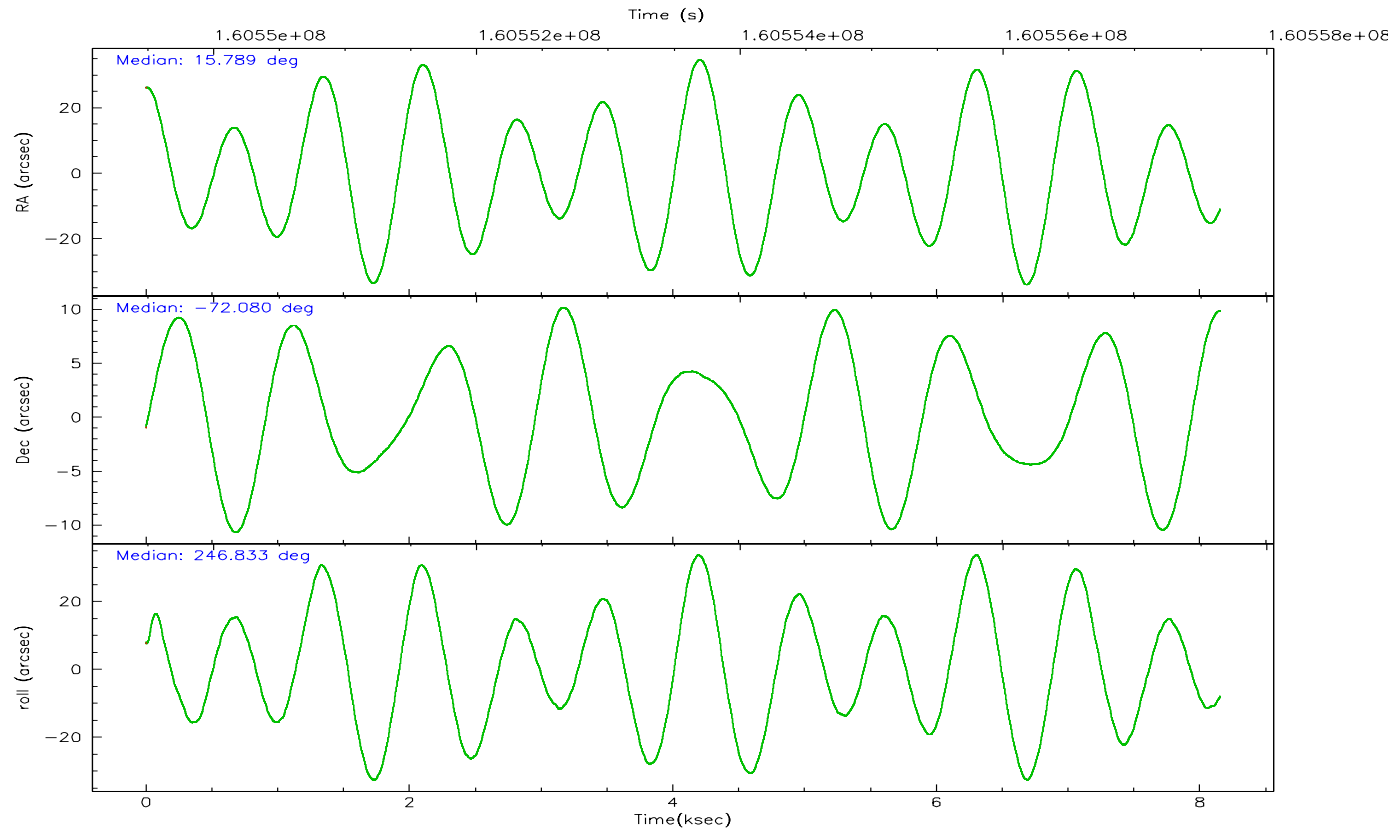
	ccd 0	ccd 1	ccd 2	ccd 3	ccd 6	ccd 7
grade 0 events	1710	1684	2015	23966	1739	1597
	4%	5%	5%	38%	4%	4%
grade 1 events	12	20	30	239	13	20
	0%	0%	0%	0%	0%	0%
grade 2 events	838	863	855	2600	852	4589
	2%	2%	2%	4%	2%	12%
grade 3 events	479	448	415	784	470	1144
	1%	1%	1%	1%	1%	3%
grade 4 events	404	462	440	855	438	1118
	1%	1%	1%	1%	1%	3%
grade 5 events	1082	1131	945	1236	1264	2817
	3%	3%	2%	1%	3%	7%
grade 6 events	666	791	614	775	789	9083
	1%	2%	1%	1%	2%	25%
grade 7 events	30167	27723	33563	32132	32849	15500
	85%	83%	86%	51%	85%	43%

2.2 Compared Parameters

Parameter	Planned	Actual	Parameter	Planned	Actual
Instrument	ACIS	ACIS	Obspar format version number	6	6
Detector	ACIS-012367	ACIS-012367	Obspar file type	PREDICTED	ACTUAL
Grating	NONE	NONE	Obspar update status	NONE	UPDATED
Data mode	VFAINT	VFAINT	On-chip summing requested	N	N
Observation mode	POINTING	POINTING	Subarray requested	NONE	NONE
Pointing RA	15.778522	15.78943513681883	Alternating exposures requested	N	N
Pointing Dec	-72.052872	-72.0799876427337	Primary exposure time	0.000000	3.2
Pointing Roll	246.618183	246.8372254697246			
Window start time	158976064.184000	158976064.184000			
Window stop time	161654464.184000	161654464.184000			
SIM focus pos (mm)	-0.782348	-0.7809083437167272			
SIM defocus (mm)	0	0.001439871863259334			
SIM translation stage pos (mm)	-233.592463	-233.5874344608287			
SIM translation stage offset (mm)	0	-0.005018542100998502			
Observation start time	160549671.184000	160549295.24629			
Observation start date	2003-02-02T05:06:47	2003-02-02T05:01:35			
Observation end time	160557644.184000	160557778.14664			
Observation end date	2003-02-02T07:19:40	2003-02-02T07:22:58			
Read mode	TIMED	TIMED			

2.3 Aspect



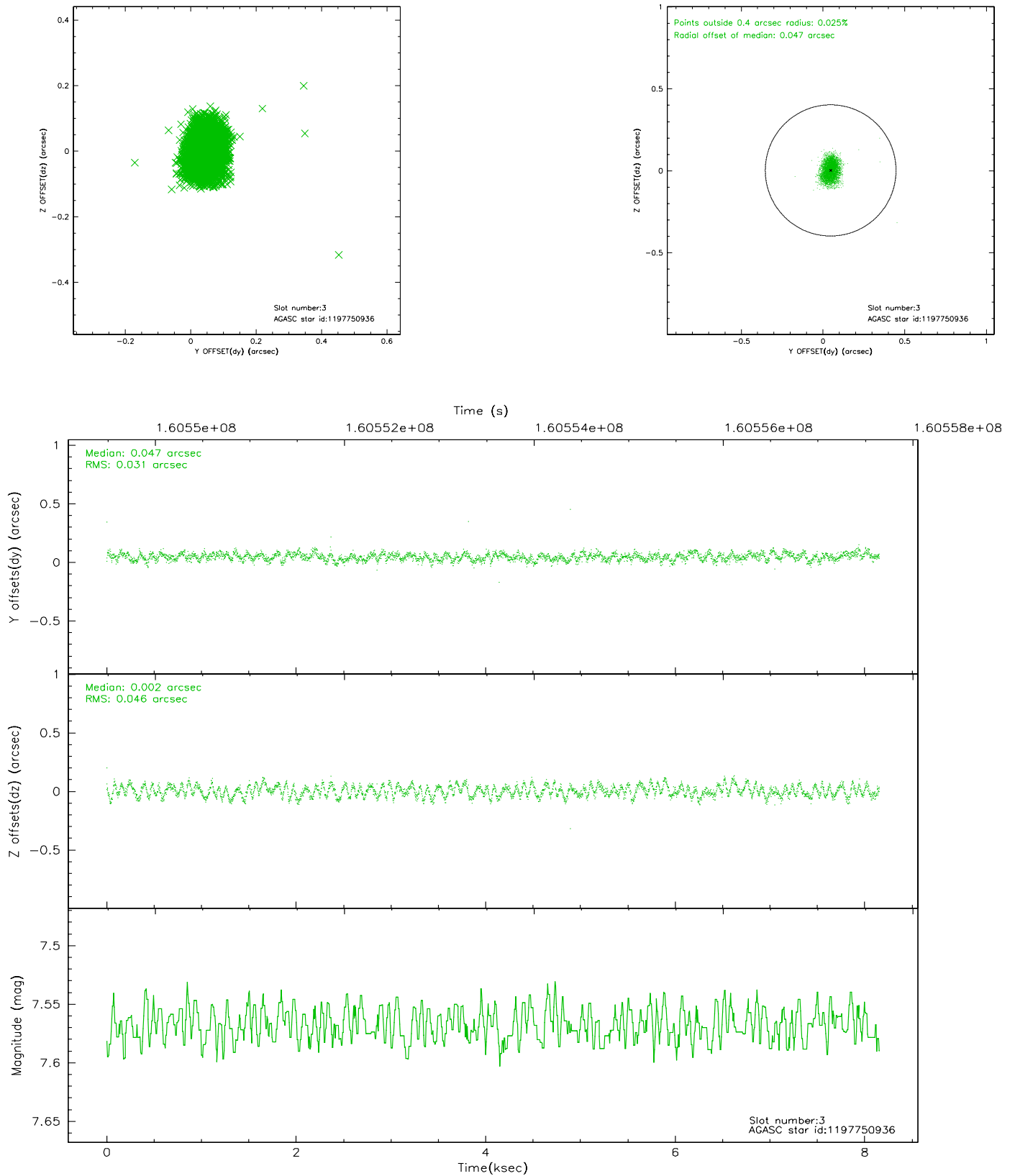


Slot Statistics

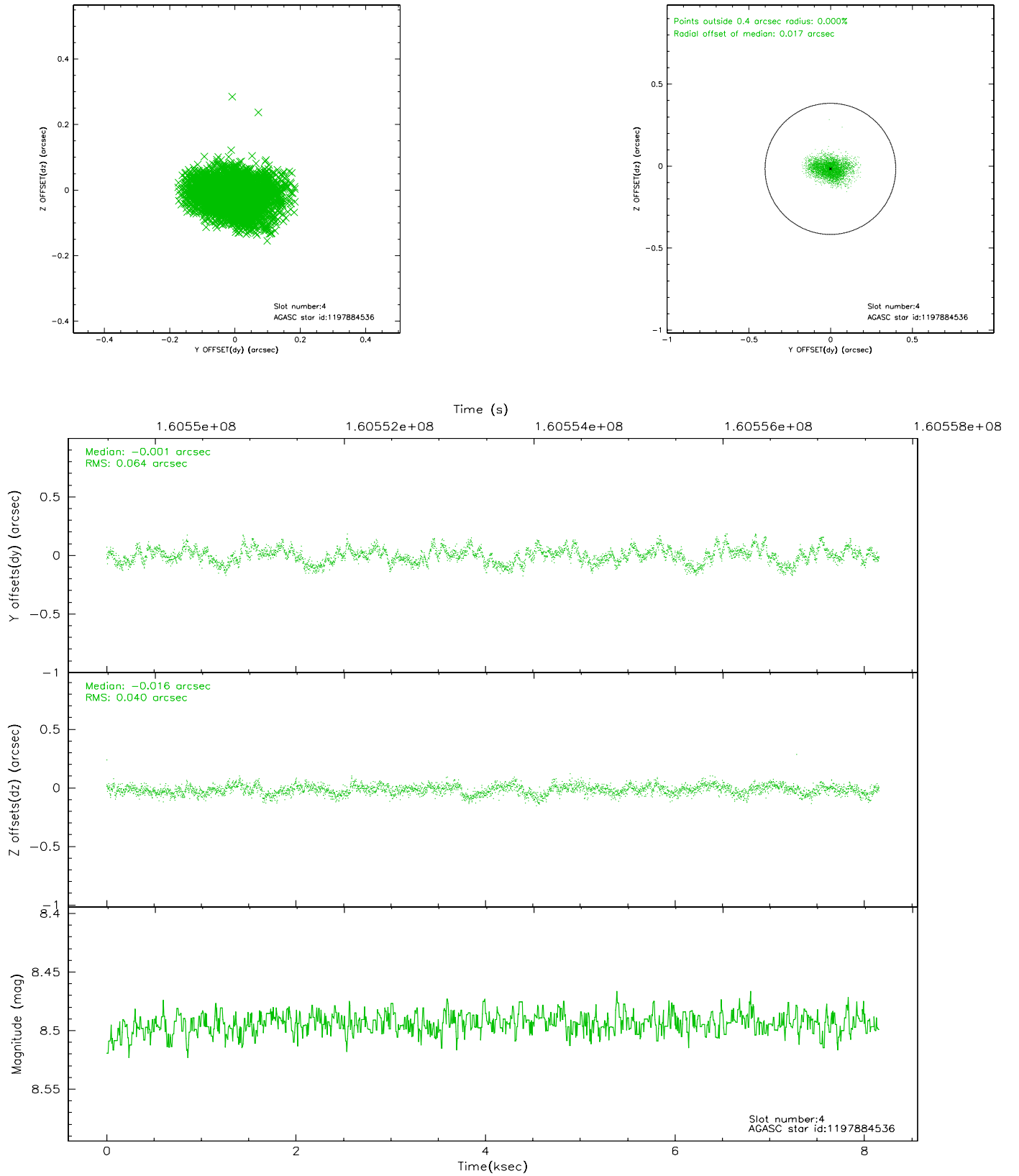
slot	status	id	mag	n_pts	med_dy	med_dz	dr1	dr2	ra	dec	mean_y	mean_z
0	FID	ACIS-I-1	7.25	1989	-0.053	0.093	0.006	0.010	0.000000	0.000000	937.16	-832.23
1	FID	ACIS-I-5	7.24	1988	-0.027	0.016	0.006	0.010	0.000000	0.000000	-1810.55	1064.82
2	FID	ACIS-I-6	7.26	1989	-0.011	-0.038	0.006	0.010	0.000000	0.000000	401.99	1710.06
3	GUIDE	1197750936	7.57	3976	0.047	0.002	0.059	0.091	15.387940	-71.549550	-1484.69	-1126.61
4	GUIDE	1197884536	8.49	3978	-0.001	-0.016	0.080	0.134	17.160729	-71.835289	-1318.35	1119.98
5	GUIDE	1197885104	9.38	3975	0.065	-0.142	0.103	0.163	17.845067	-72.189368	-415.90	2299.28
6	GUIDE	1197750824	10.09	3976	0.076	0.140	0.136	0.224	14.791487	-71.393477	-1720.06	-1978.04
7	GUIDE	1198189696	7.37	3978	-0.179	0.015	0.062	0.103	15.223750	-72.697522	2368.11	377.05

2.4 Star Slots

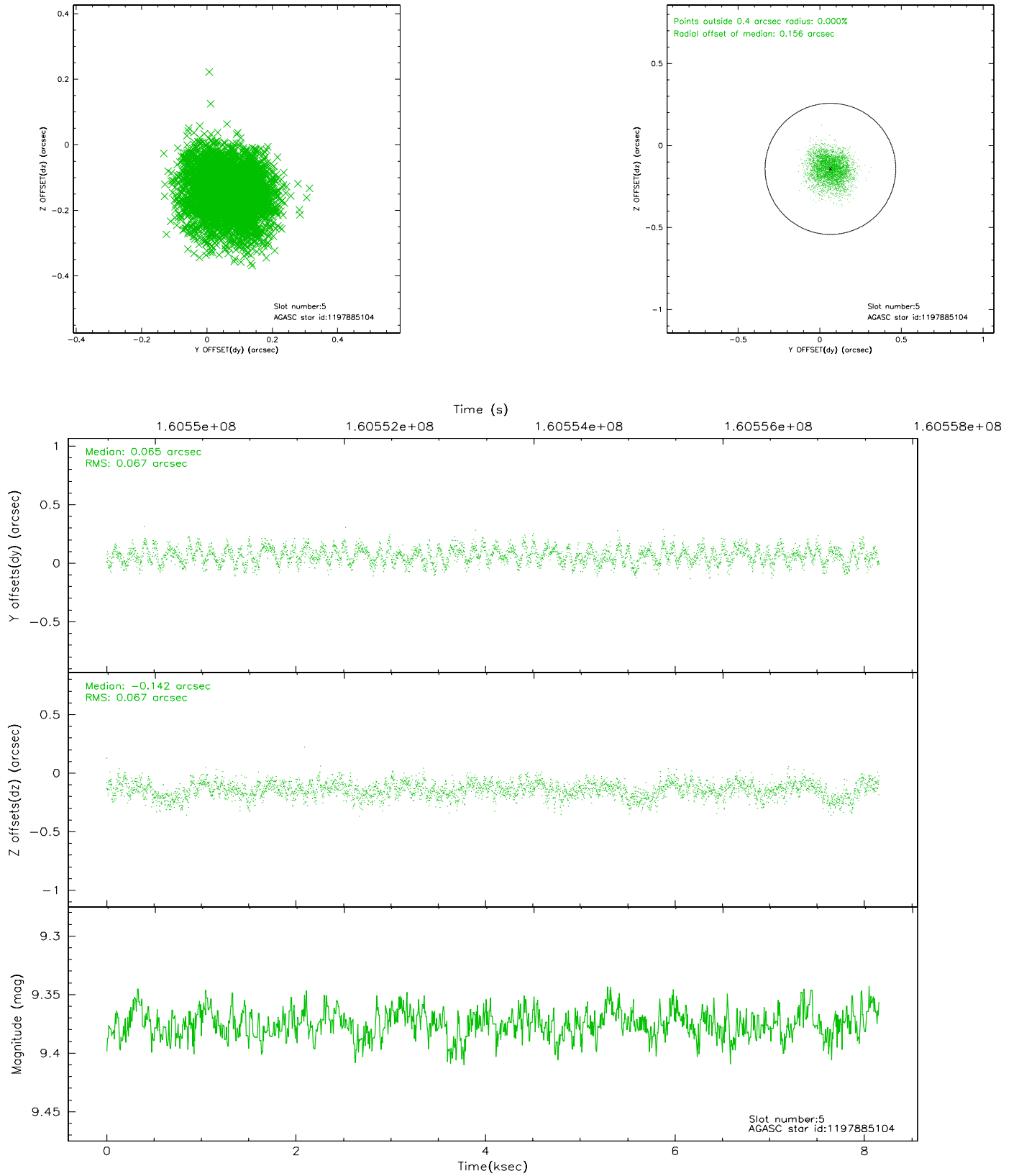
2.4.1 Slot 3



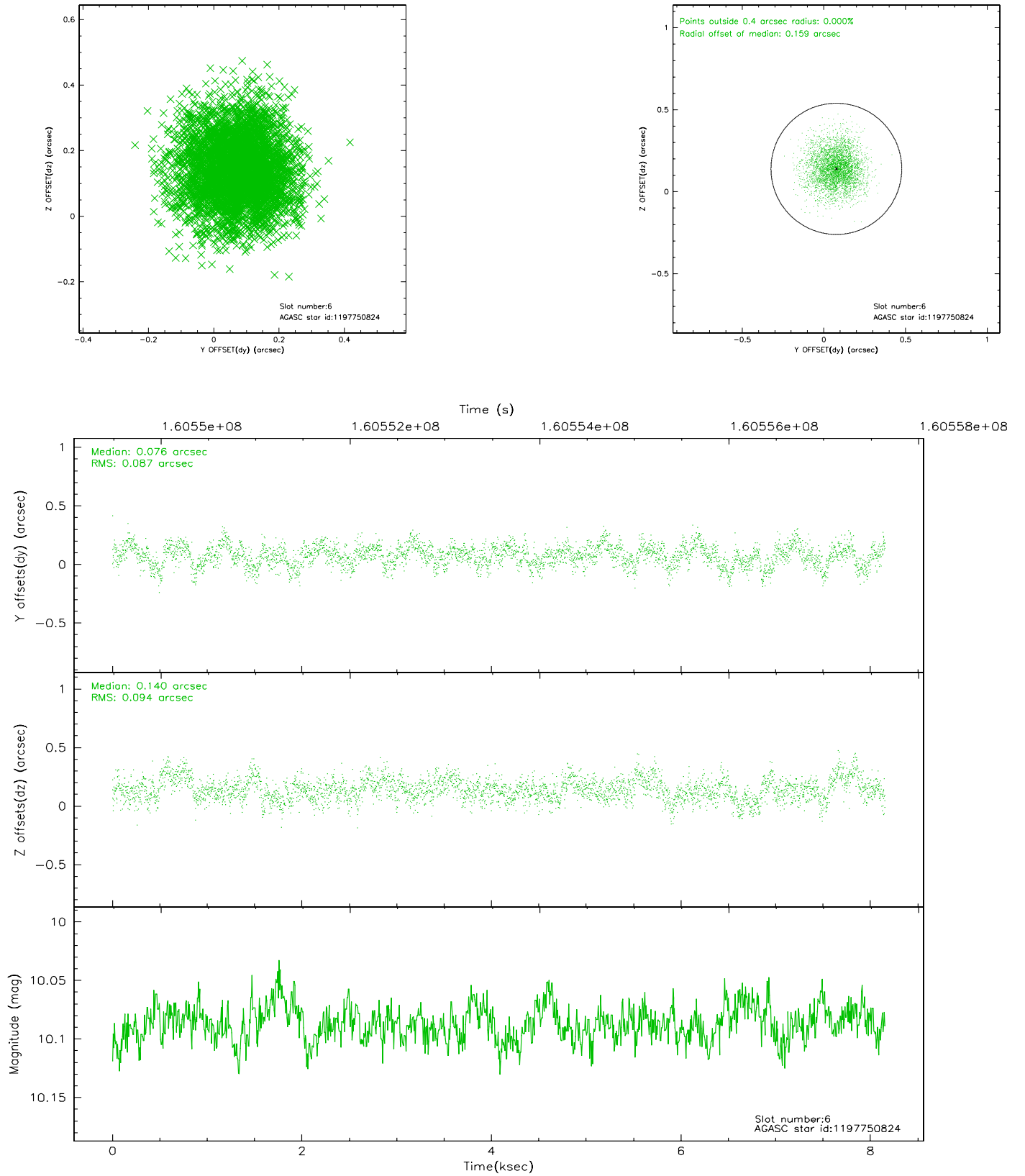
2.4.2 Slot 4



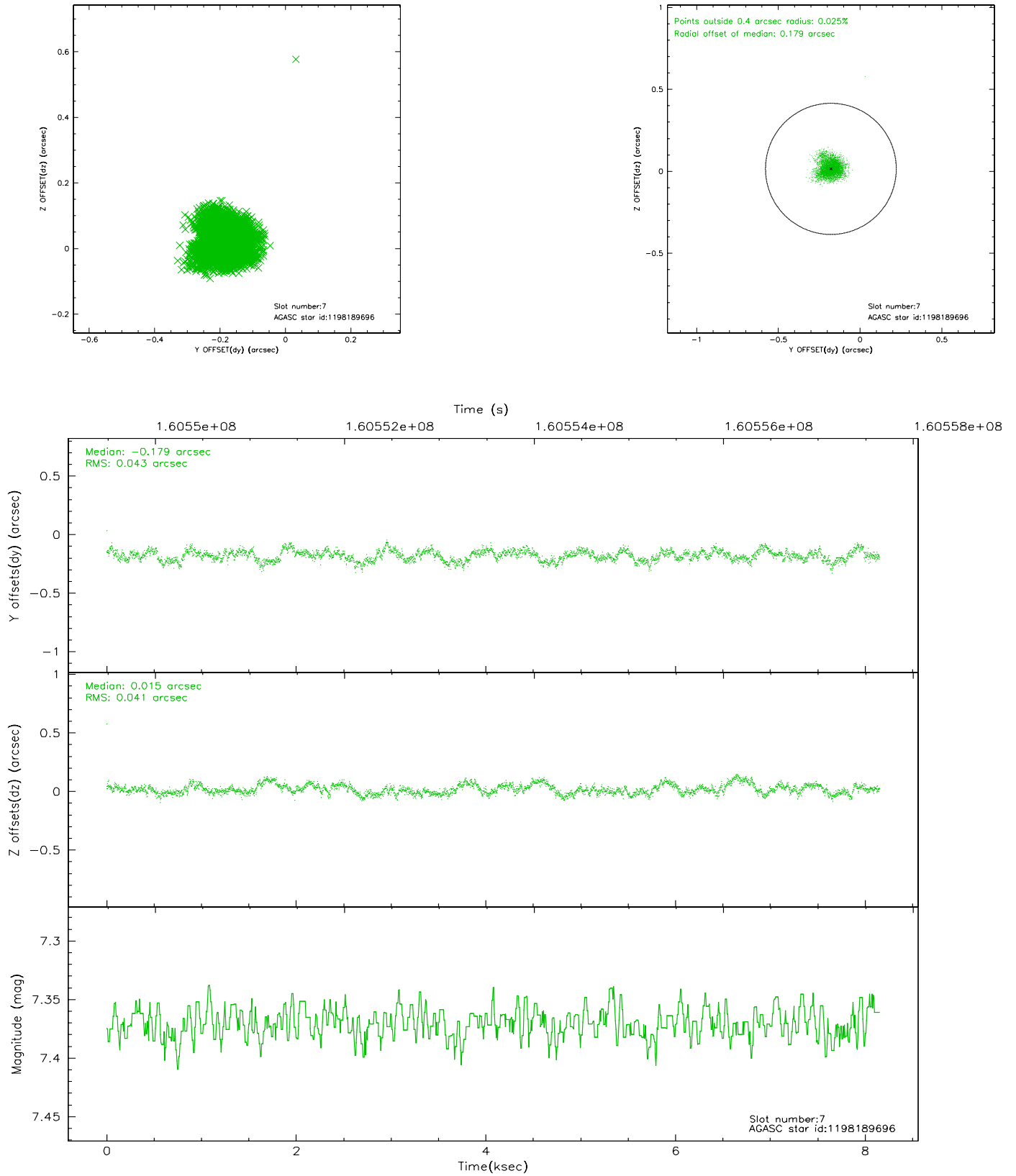
2.4.3 Slot 5



2.4.4 Slot 6

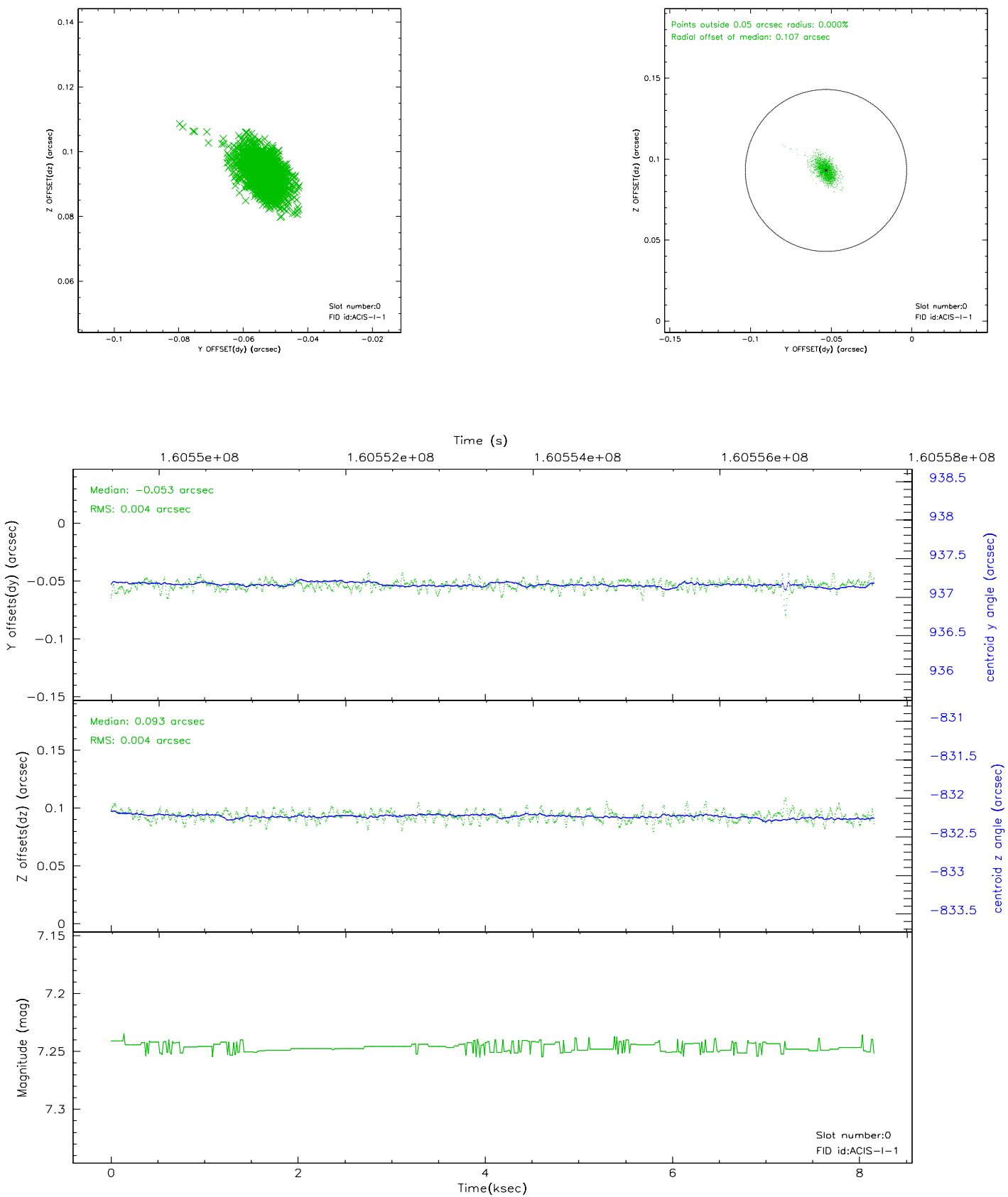


2.4.5 Slot 7

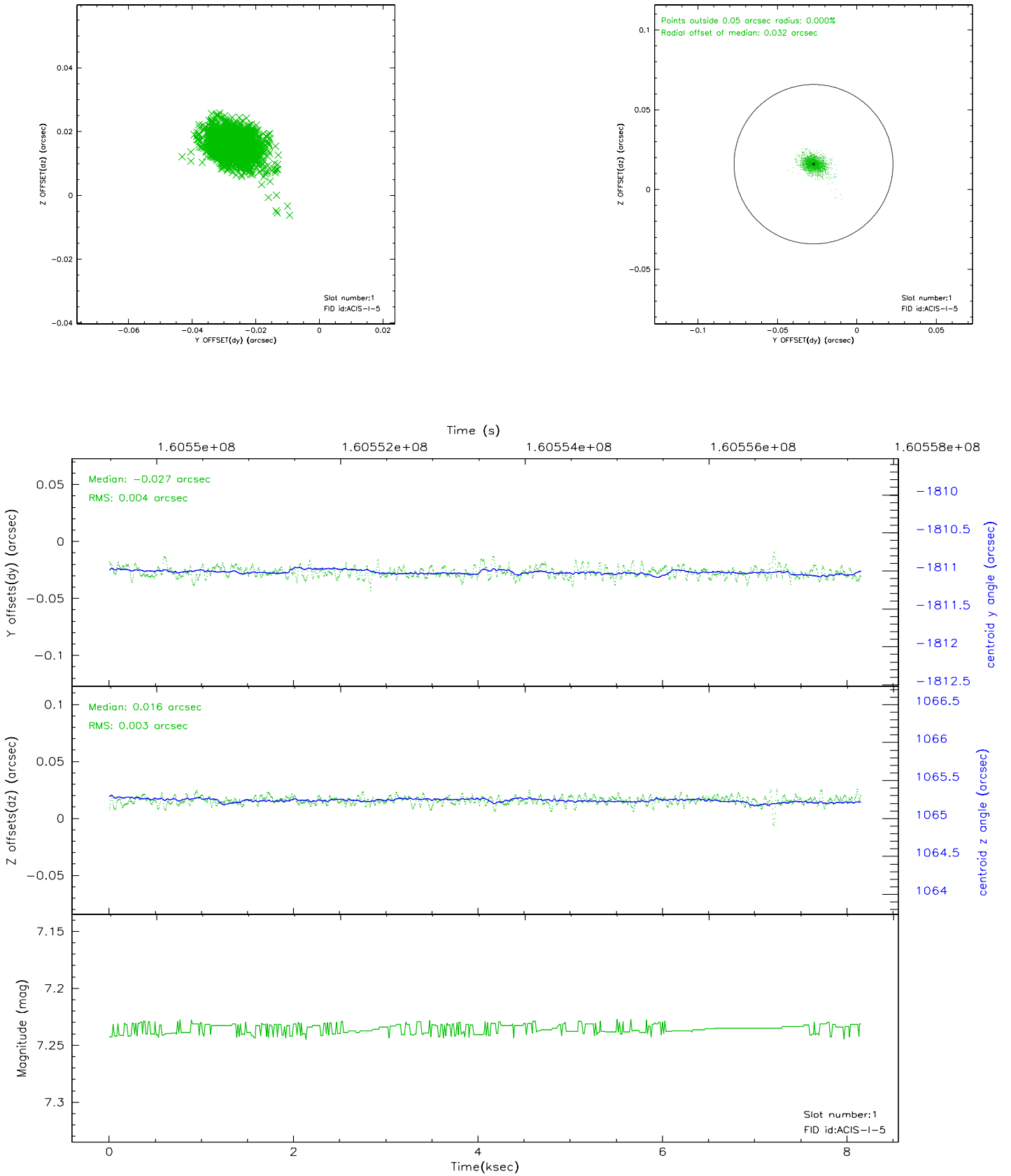


2.5 FID Slots

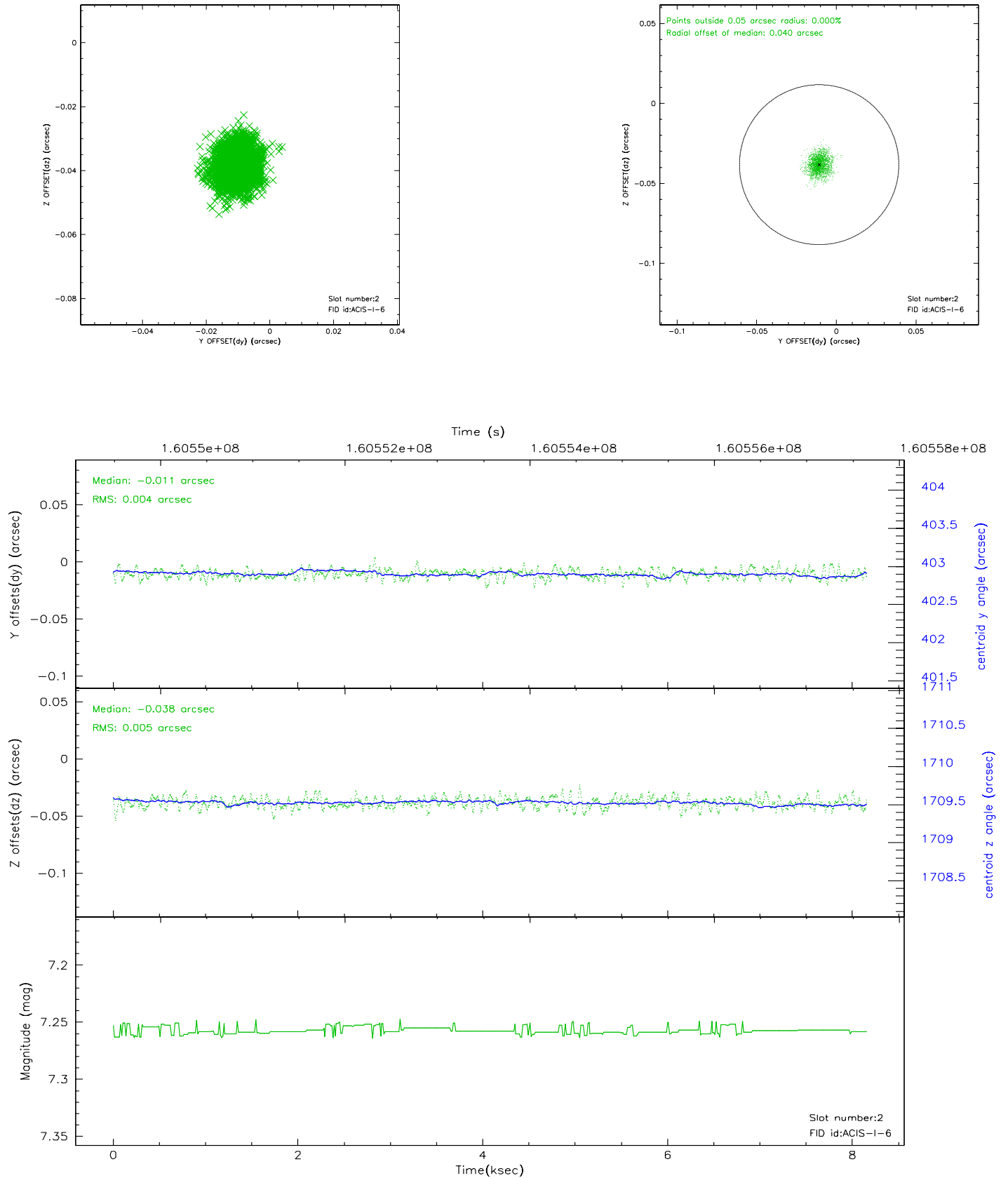
2.5.1 Slot 0



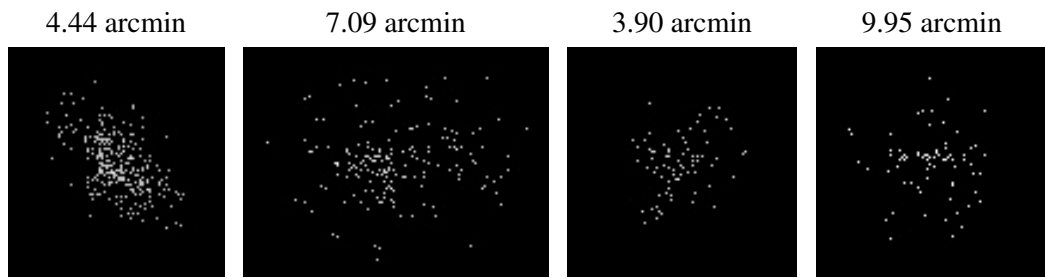
2.5.2 Slot 1



2.5.3 Slot 2



3 Point Sources



A Summary

A.1 Status

V&V Scientist	Jen Lauer
V&V Date (YYYY-MM-DD)	2006.07.20
V&V Edition	1
V&V Disposition and Status	OK
V&V Charge Time	7.734

A.2 Comments

Window constraint met.