

V&V Reference Report

L2 ASCDS Version : 7.6.8

Observation 3508 - L2 Version 001
Chandra X-Ray Center

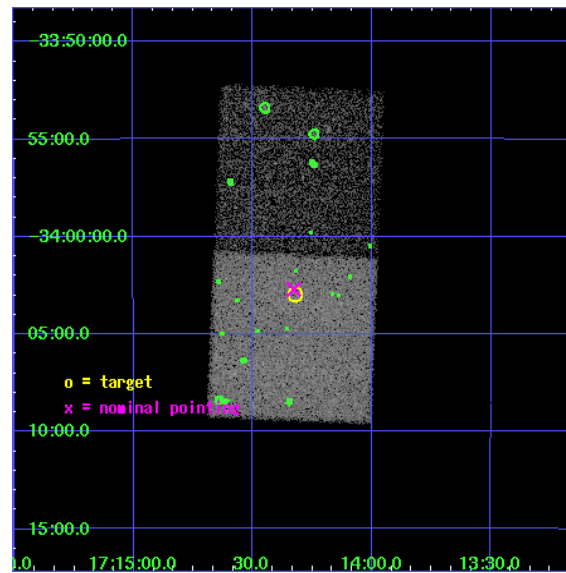
L2 Processing Date : Jul 20 2006

Contents

1	Front	2
2	OBI	3
2.1	OBI	3
2.1.1	Images	3
2.1.2	Bias	3
2.1.3	Parameters	4
2.1.4	Events	4
2.2	Compared Parameters	5
2.3	Aspect	6
2.4	Star Slots	9
2.4.1	Slot 3	9
2.4.2	Slot 4	10
2.4.3	Slot 5	11
2.4.4	Slot 6	12
2.4.5	Slot 7	13
2.5	FID Slots	14
2.5.1	Slot 0	14
2.5.2	Slot 1	15
2.5.3	Slot 2	16
3	Point Sources	17
A	Summary	18
A.1	Status	18
A.2	Comments	18

1 Front

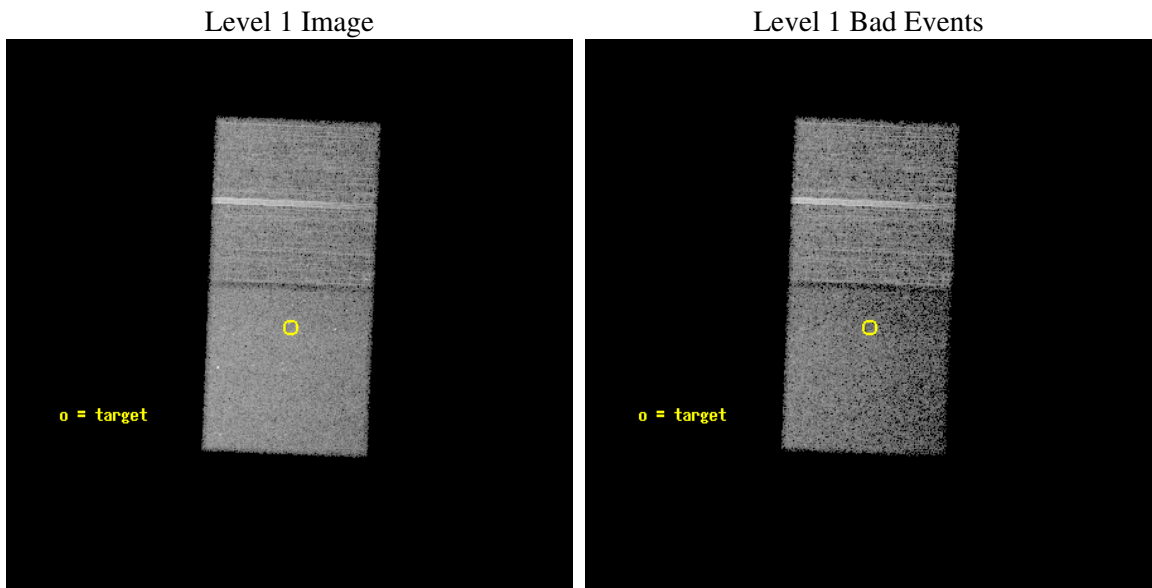
seq_num	400261
obs_id	3508
title	NEUTRON STARS IN QUIESCENCE
observer	Dr. Stephen Murray
object	2S1711-339
dtcycle	0
cycle	P
ra_targ	258.58
dec_targ	-34.049444
ra_nom	258.58183971478
dec_nom	-34.045392801773
roll_nom	92.361993098814
revision	2
ontime	25344.0
livetime	25001.973009234
ontime6	25340.959039718
ontime7	25344.0
l2events	75216



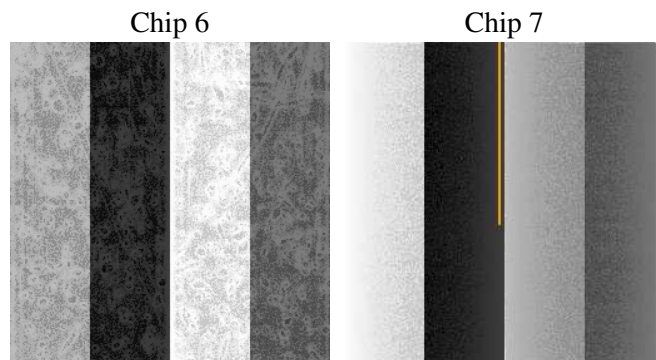
2 OBI

2.1 OBI

2.1.1 Images



2.1.2 Bias



2.1.3 Parameters

obi_num	0
ascdsver	7.6.8
caldbver	3.2.2
date	2006-07-20T22:07:39
revision	2

sched_exp_time	25200.000000
ontime	26058.345184207
ontime6	26055.304223925
ontime7	26058.345184207
l1events	305395

2.1.4 Events

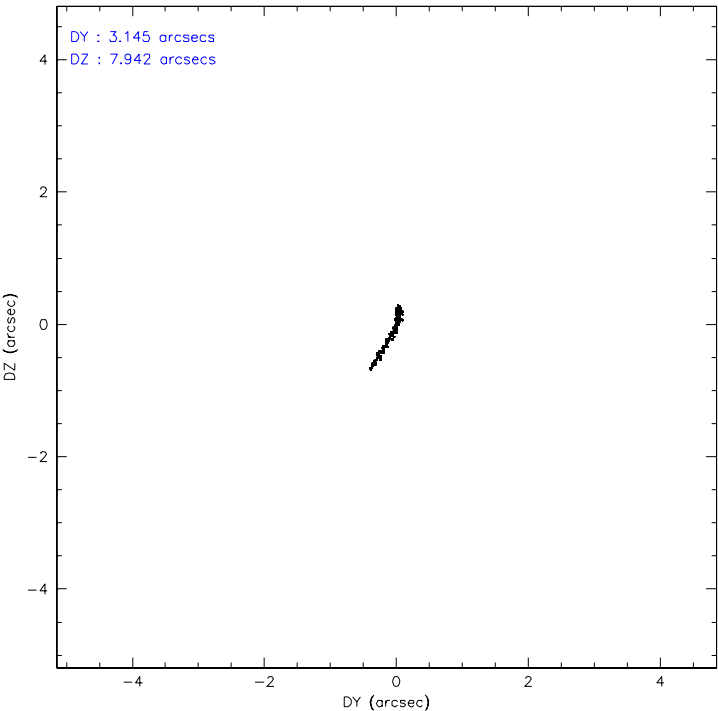
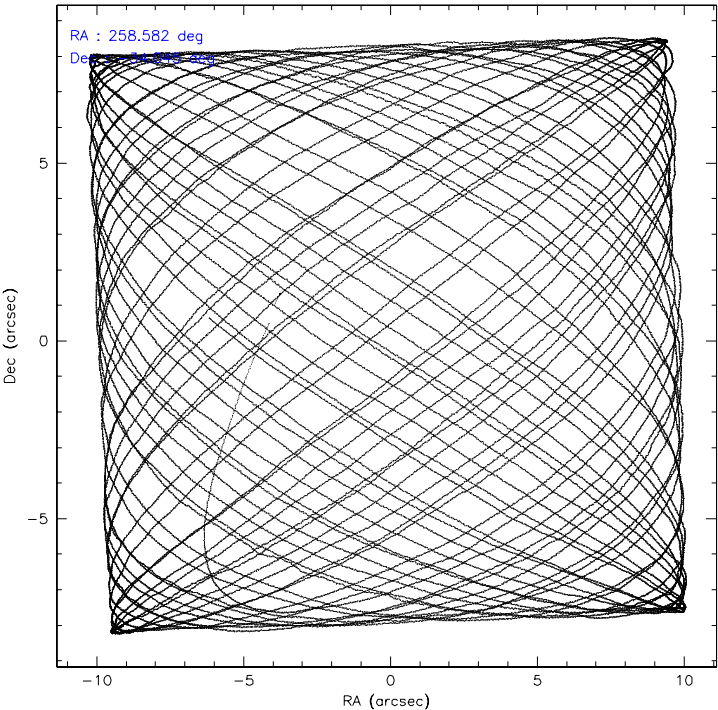
	ccd 6	ccd 7
level 1 events	148641	156754
rejected events	133347	93877
rejected %	89%	59%

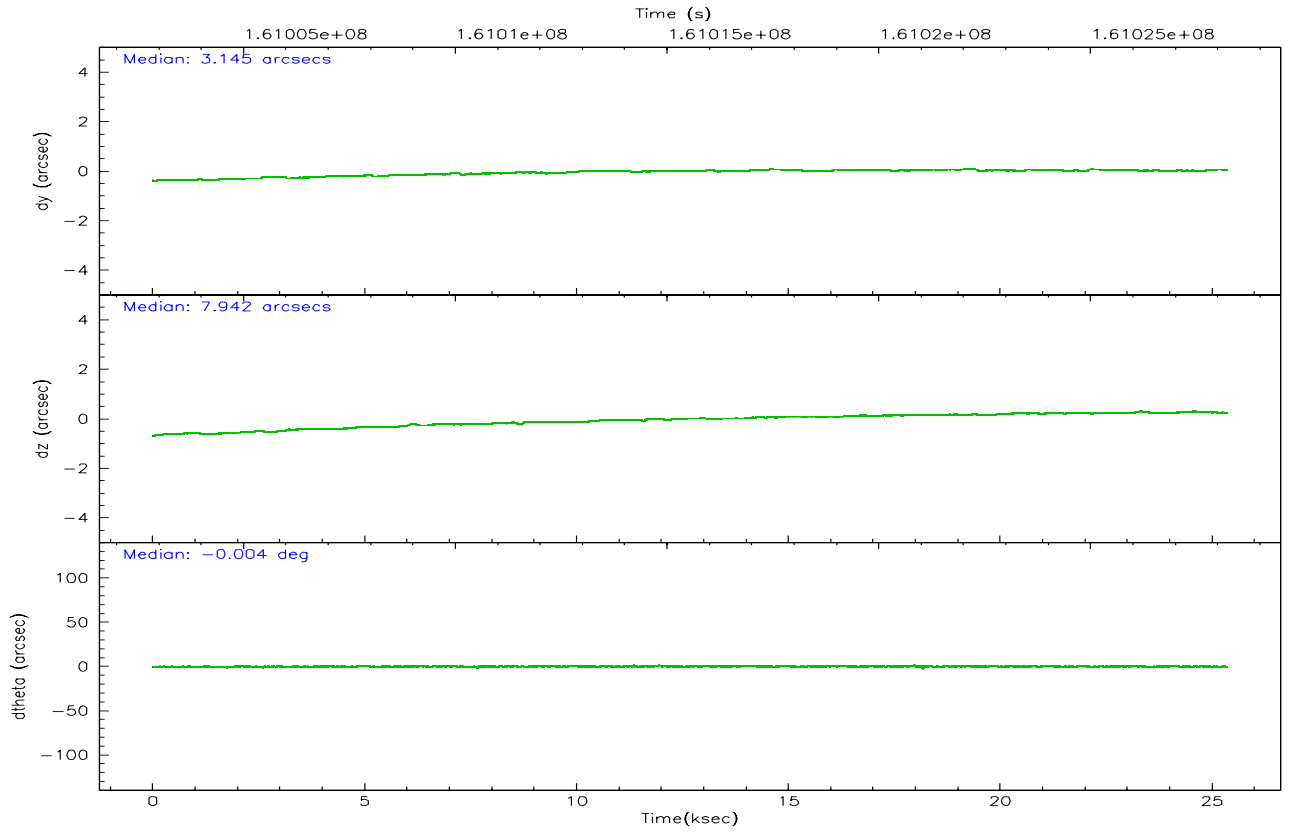
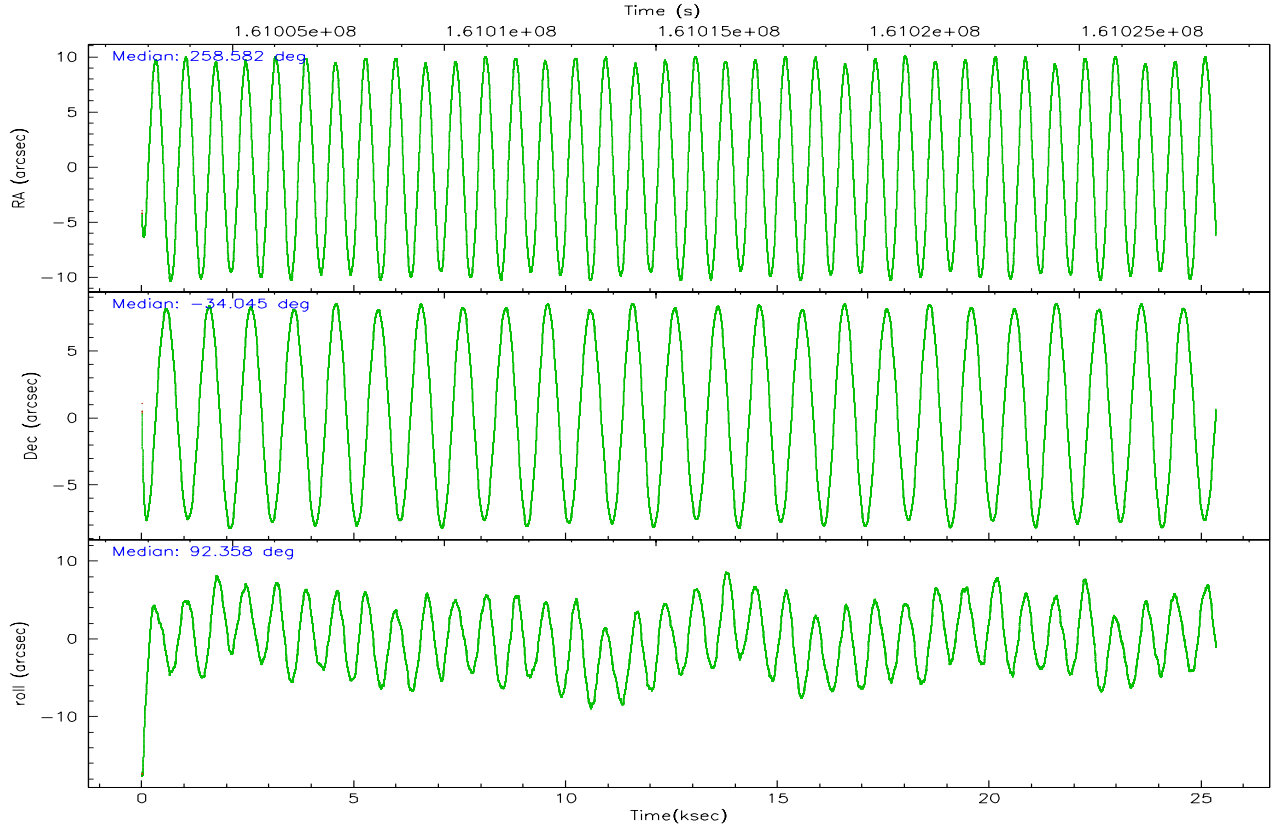
	ccd 6	ccd 7
grade 0 events	5994	3883
	4%	2%
grade 1 events	57	76
	0%	0%
grade 2 events	3176	15350
	2%	9%
grade 3 events	1717	3265
	1%	2%
grade 4 events	1663	3144
	1%	2%
grade 5 events	5757	11893
	3%	7%
grade 6 events	3172	38954
	2%	24%
grade 7 events	127105	80189
	85%	51%

2.2 Compared Parameters

Parameter	Planned	Actual	Parameter	Planned	Actual
Instrument	ACIS	ACIS	Obspar format version number	6	6
Detector	ACIS-67	ACIS-67	Obspar file type	PREDICTED	ACTUAL
Grating	NONE	NONE	Obspar update status	NONE	UPDATED
Data mode	VFAINT	VFAINT	On-chip summing requested	N	N
Observation mode	POINTING	POINTING	Subarray requested	NONE	NONE
Pointing RA	258.599795	258.5818397147848	Alternating exposures requested	N	N
Pointing Dec	-34.068156	-34.04539280177263	Primary exposure time	0.000000	3
Pointing Roll	92.215431	92.36199309881366			
SIM focus pos (mm)	-0.684267	-0.6828225247311905			
SIM defocus (mm)	0	0.001444936568705701			
SIM translation stage pos (mm)	-190.132523	-190.1400660498719			
SIM translation stage offset (mm)	0	0.00754346686406393			
Observation start time	161003022.184000	161001890.16529			
Observation start date	2003-02-07T11:02:38	2003-02-07T10:44:50			
Observation end time	161028222.184000	161029073.67893			
Observation end date	2003-02-07T18:02:38	2003-02-07T18:17:53			
Read mode	TIMED	TIMED			

2.3 Aspect



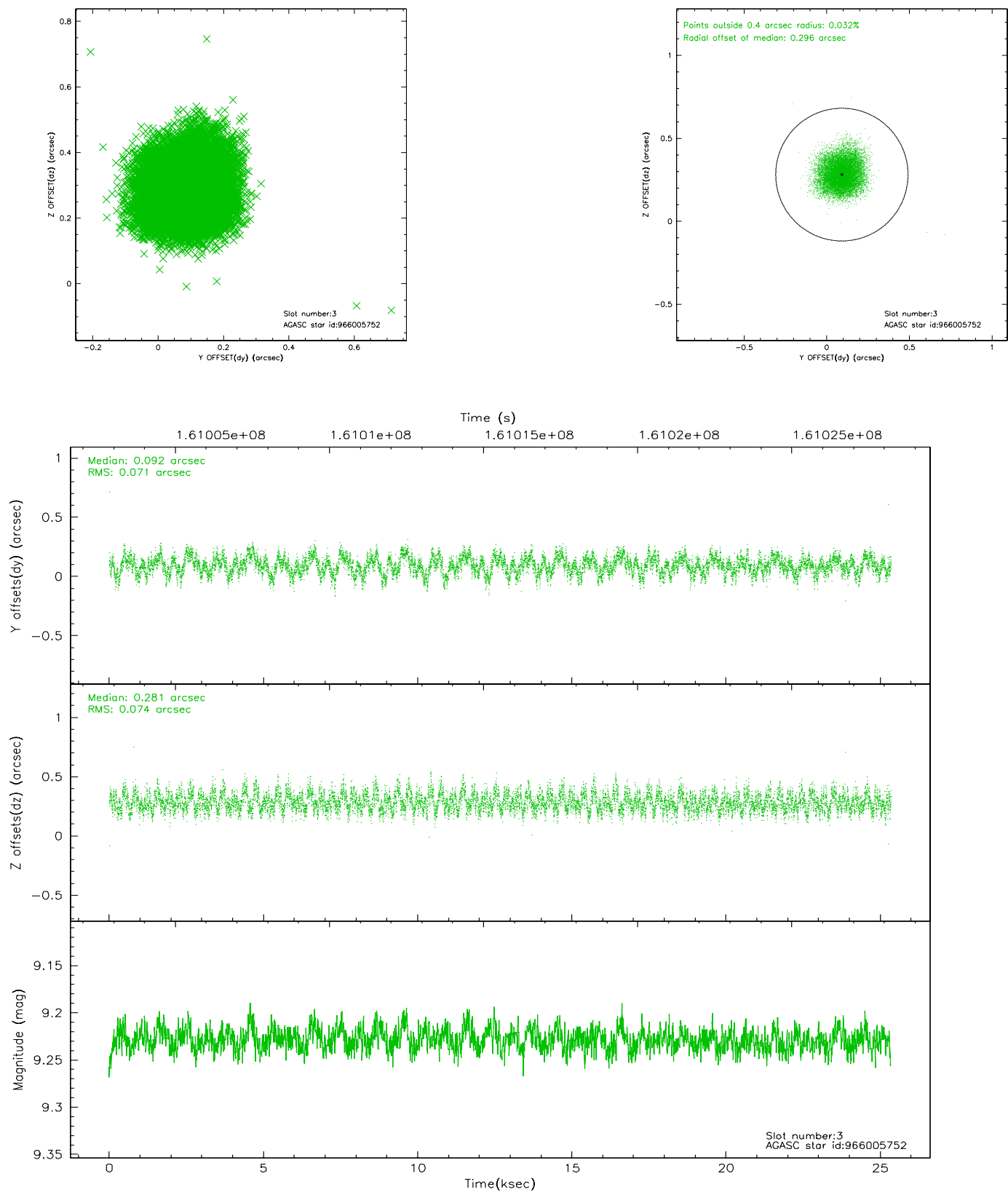


Slot Statistics

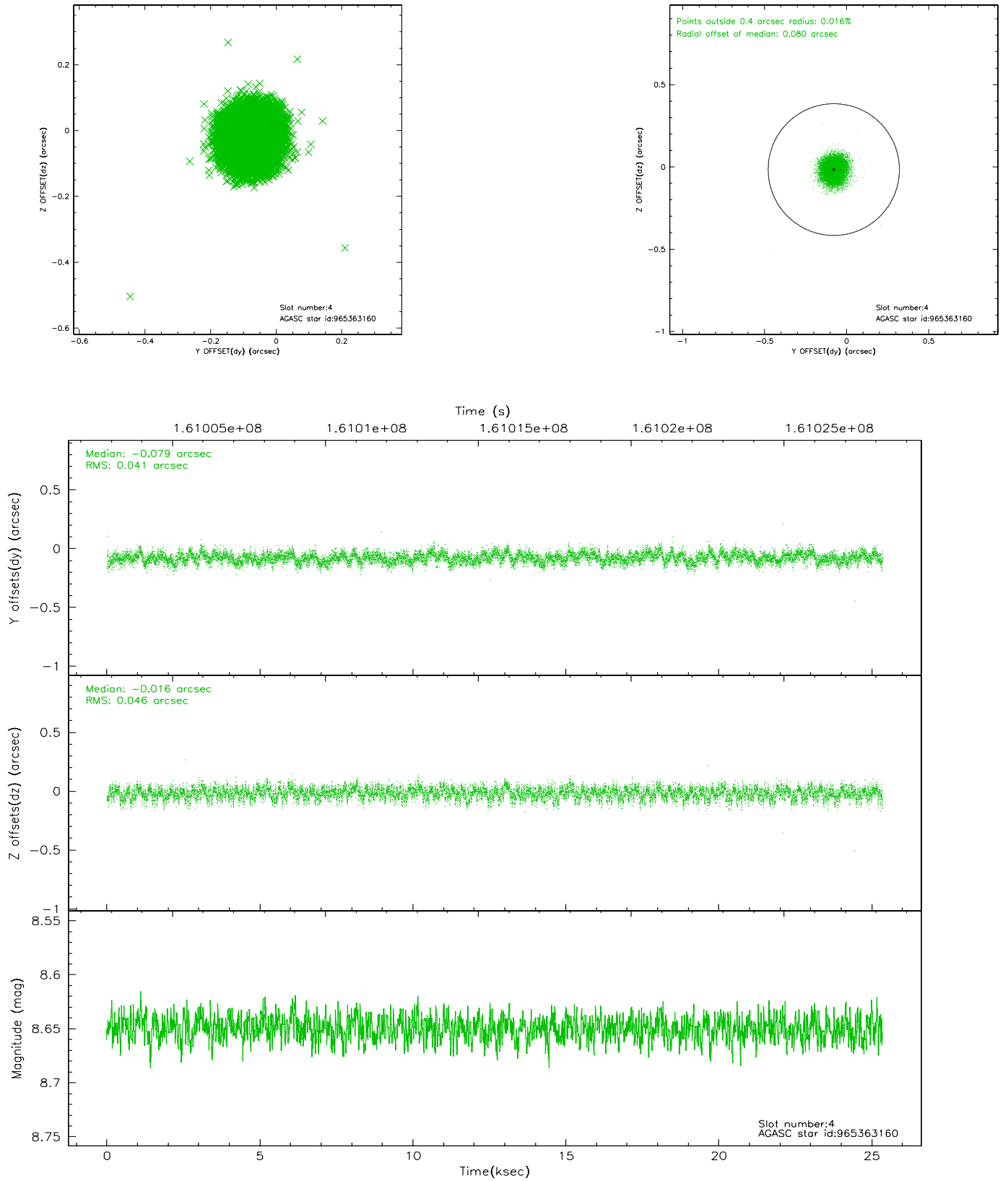
slot	status	id	mag	n_pts	med_dy	med_dz	dr1	dr2	ra	dec	mean_y	mean_z
0	FID	ACIS-S-2	7.11	6183	0.004	0.011	0.009	0.015	0.000000	0.000000	-755.73	-1729.05
1	FID	ACIS-S-4	7.20	6183	-0.049	-0.005	0.007	0.014	0.000000	0.000000	2157.45	179.29
2	FID	ACIS-S-5	7.24	6182	0.014	0.002	0.009	0.019	0.000000	0.000000	-1808.41	173.11
3	GUIDE	966005752	9.23	12361	0.092	0.281	0.110	0.172	259.407587	-34.580367	-1944.26	-2320.57
4	GUIDE	965363160	8.65	12366	-0.079	-0.016	0.066	0.105	258.200115	-33.678909	1444.12	1142.49
5	GUIDE	965878312	9.48	12347	-0.045	-0.320	0.105	0.166	257.833869	-34.244132	-553.36	2302.38
6	GUIDE	966005376	9.59	12360	0.180	0.150	0.103	0.165	258.892252	-34.492869	-1562.22	-807.54
7	GUIDE	965873176	8.58	12364	-0.148	-0.097	0.093	0.146	258.244011	-33.915164	589.48	1040.97

2.4 Star Slots

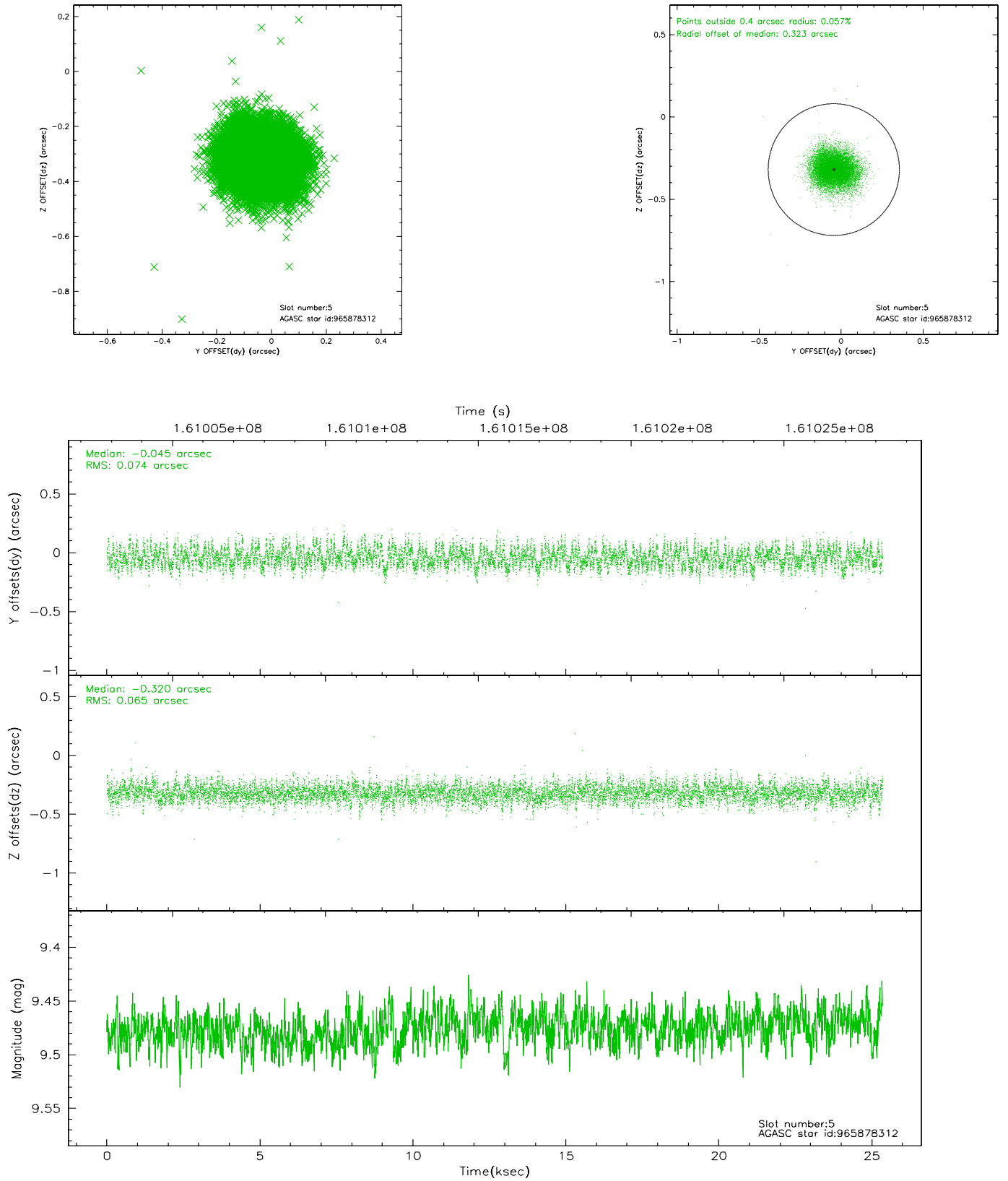
2.4.1 Slot 3



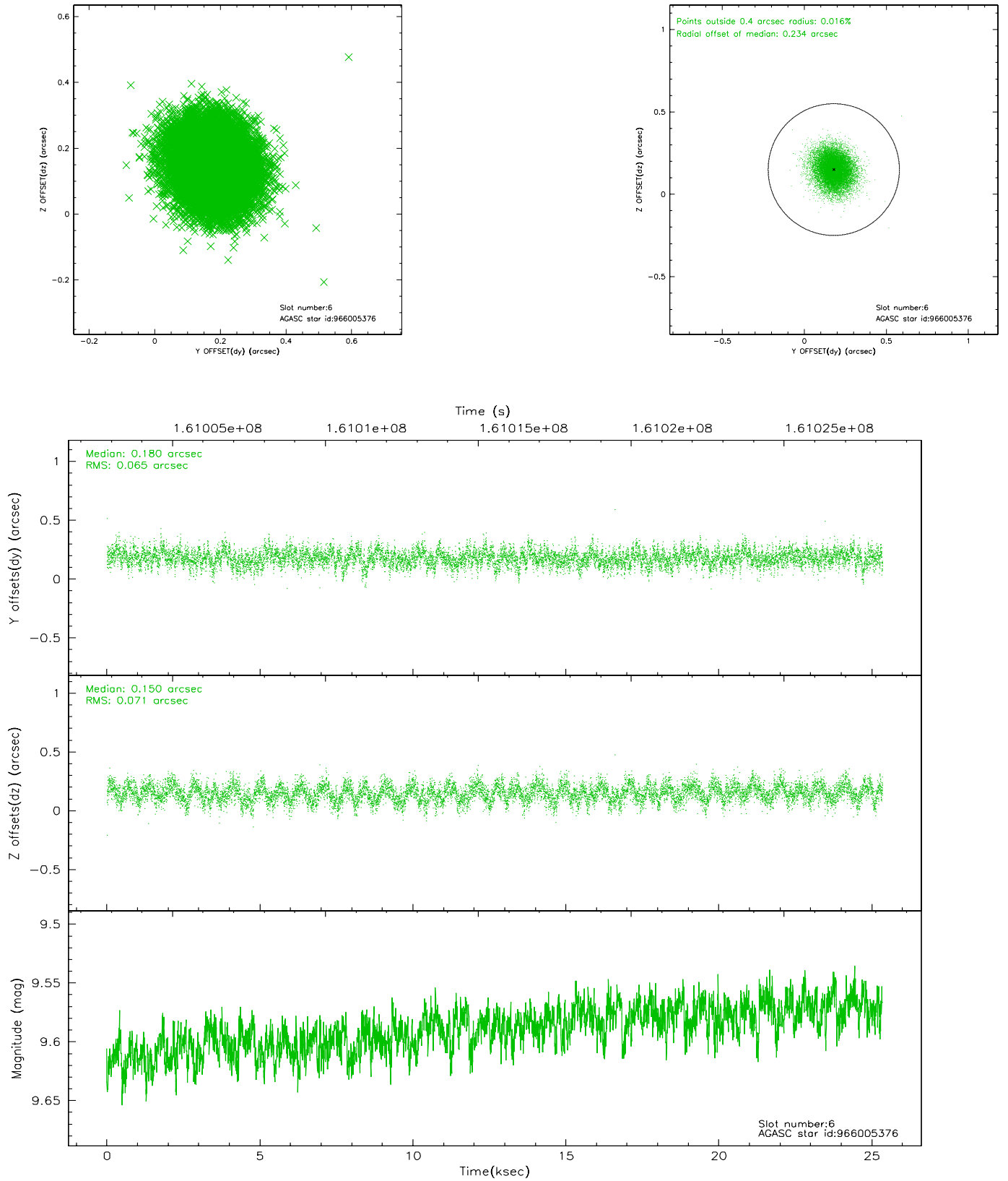
2.4.2 Slot 4



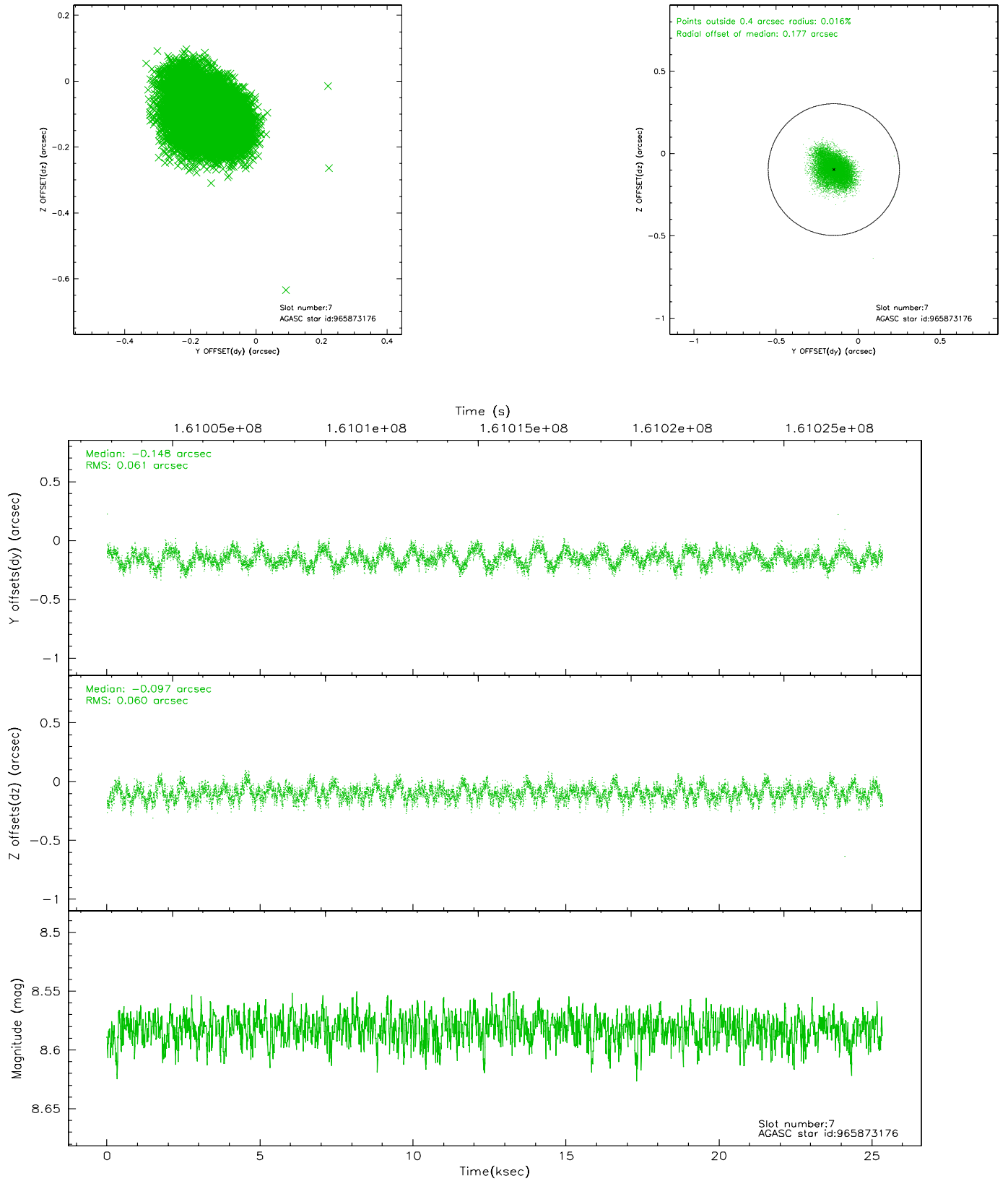
2.4.3 Slot 5



2.4.4 Slot 6

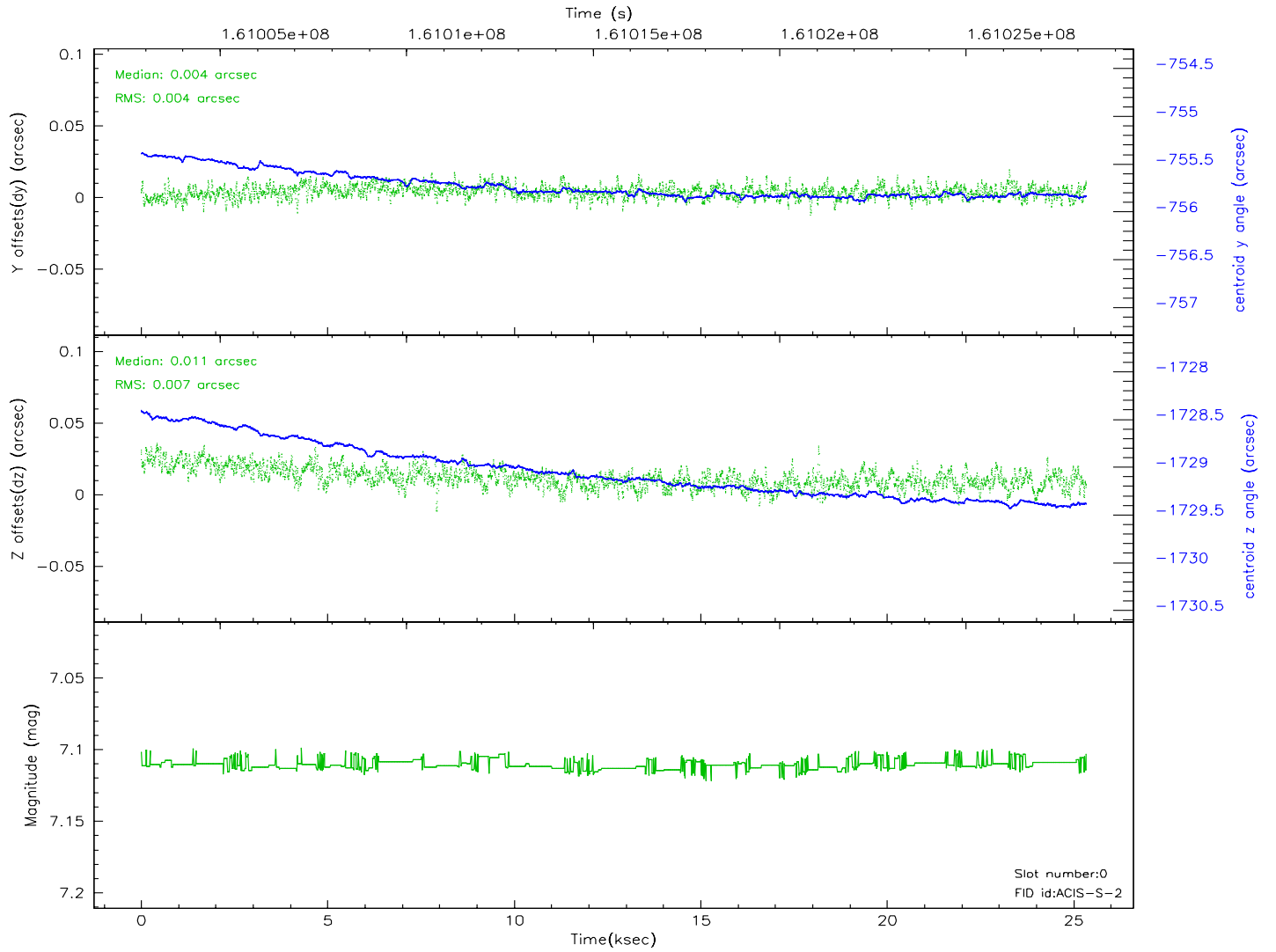
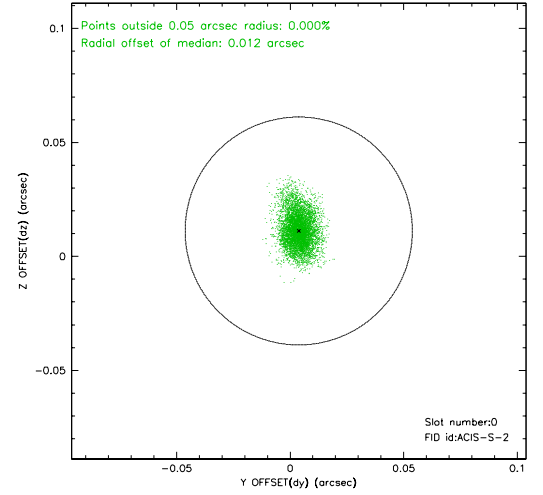
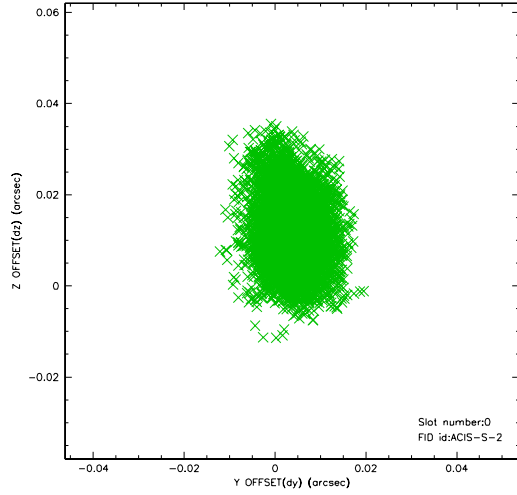


2.4.5 Slot 7

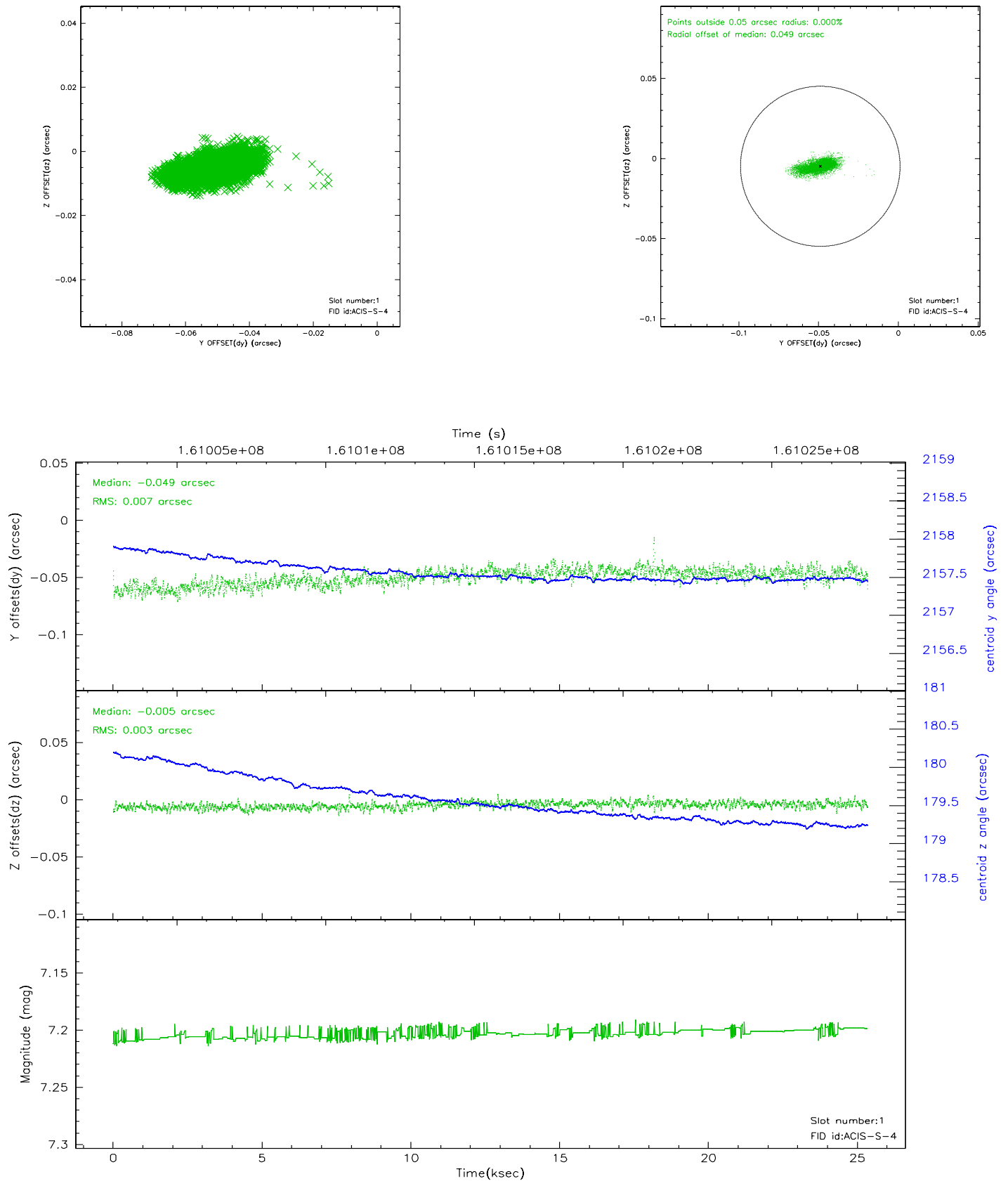


2.5 FID Slots

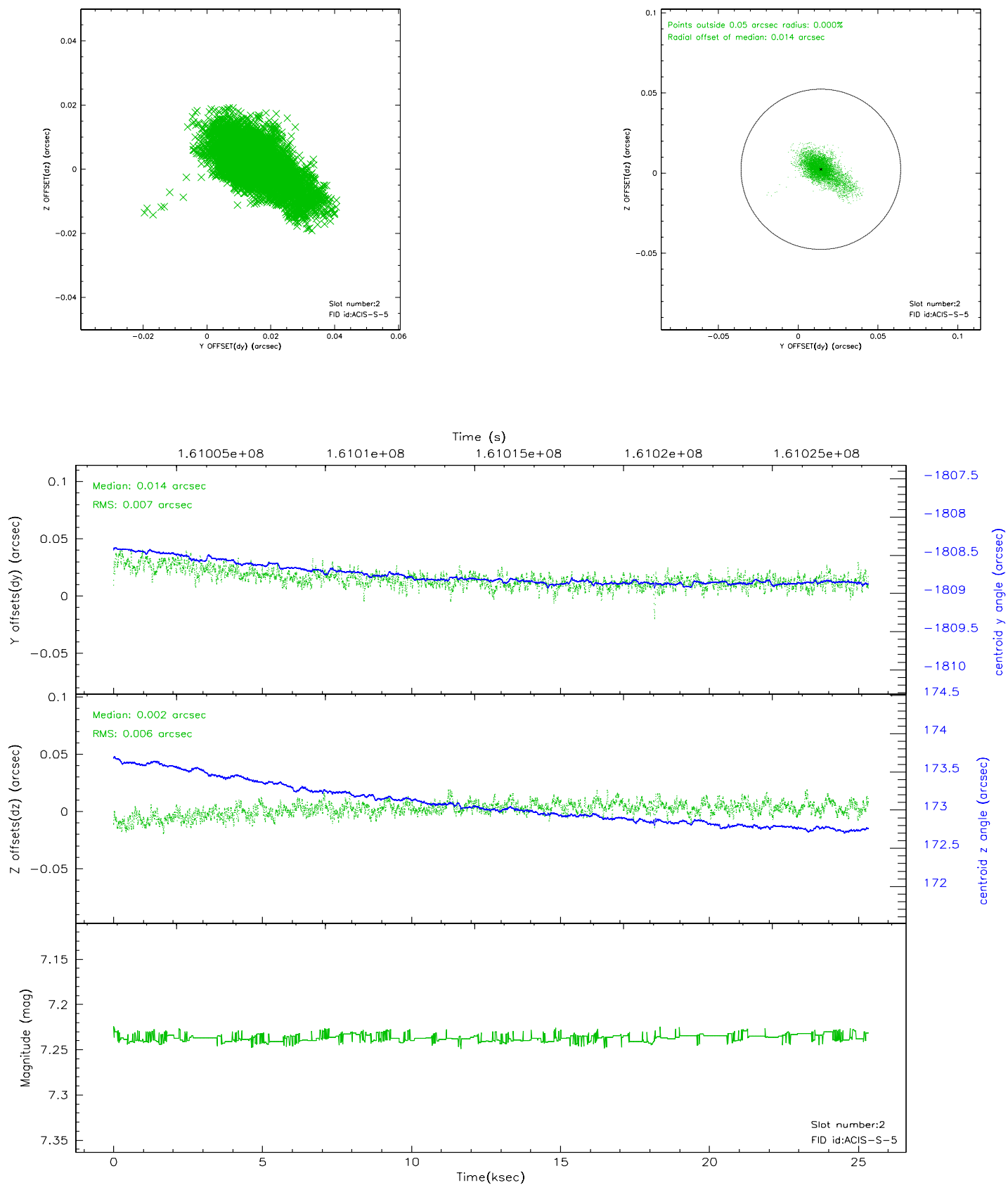
2.5.1 Slot 0



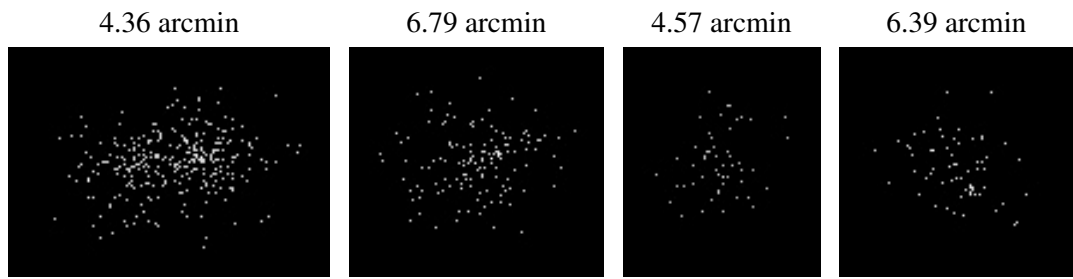
2.5.2 Slot 1



2.5.3 Slot 2



3 Point Sources



A Summary

A.1 Status

V&V Scientist	Jen Lauer
V&V Date (YYYY-MM-DD)	2006.07.21
V&V Edition	1
V&V Disposition and Status	OK
V&V Charge Time	25.344

A.2 Comments