

V&V Reference Report

L2 ASCDS Version : 7.6.9

Observation 3488 - L2 Version 001
Chandra X-Ray Center

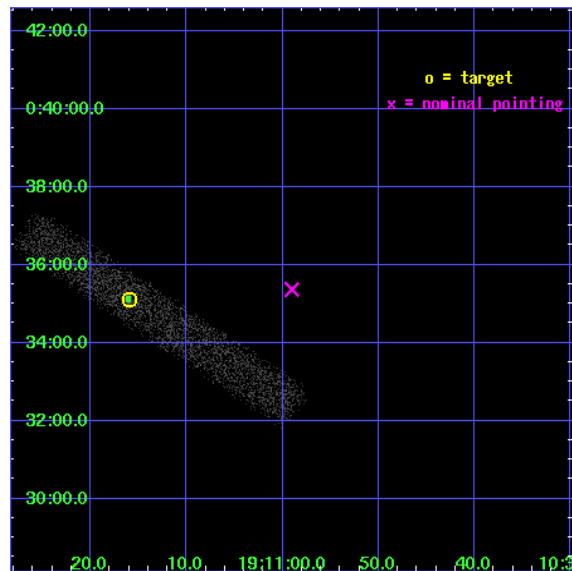
L2 Processing Date : Sep 26 2006

Contents

1	Front	2
2	OBI	3
2.1	OBI	3
2.1.1	Images	3
2.1.2	Bias	3
2.1.3	Parameters	4
2.1.4	Events	4
2.2	Compared Parameters	5
2.3	Aspect	6
2.4	Star Slots	9
2.4.1	Slot 3	9
2.4.2	Slot 4	10
2.4.3	Slot 5	11
2.4.4	Slot 6	12
2.4.5	Slot 7	13
2.5	FID Slots	14
2.5.1	Slot 0	14
2.5.2	Slot 1	15
2.5.3	Slot 2	16
3	Point Sources	17
A	Summary	18
A.1	Status	18
A.2	Comments	18

1 Front

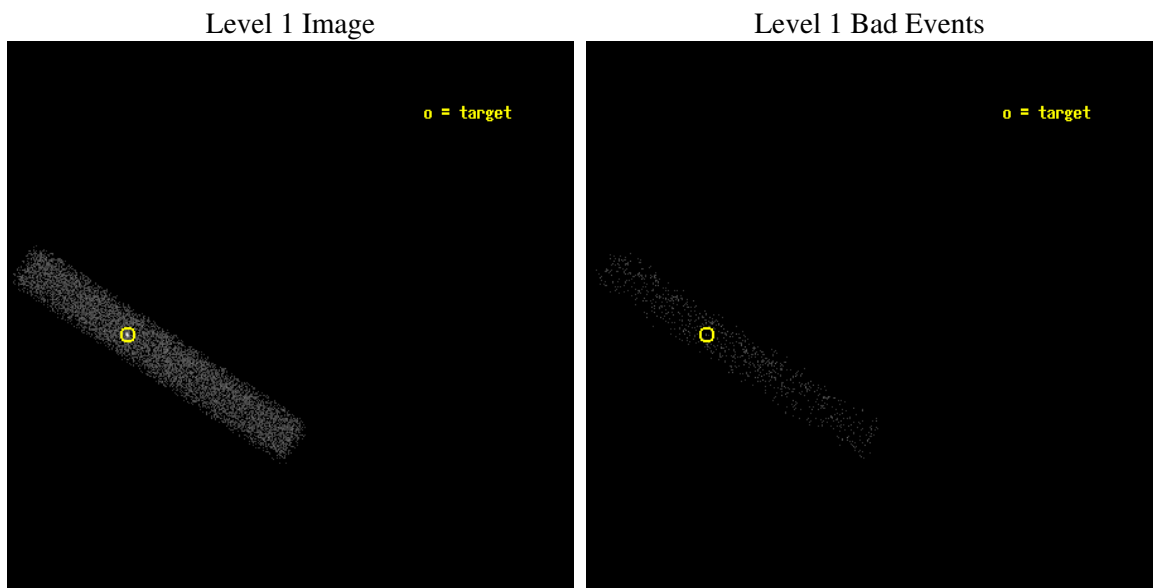
seq_num	400254
obs_id	3488
title	VARIABLE THERMAL EMISSION AND FEATURE FROM AQL X-1 IN QUIESCENCE
observer	Prof. Robert Rutledge
object	AQL X-1
dtcycle	0
cycle	P
ra_targ	287.816667
dec_targ	0.585
ra_nom	287.74602366677
dec_nom	0.58932808308183
roll_nom	213.19801791851
revision	2
ontime	7172.0001068711
livetime	6504.6255277264
ontime7	7172.0001068711
l2events	5031



2 OBI

2.1 OBI

2.1.1 Images



2.1.2 Bias

Chip 7



2.1.3 Parameters

obi_num	0
ascdsver	7.6.9
caldbver	3.2.3
date	2006-09-26T10:10:11
revision	2

sched_exp_time	7000.000000
ontime	7997.2820587158
ontime7	7997.2820587158
l1events	10612

2.1.4 Events

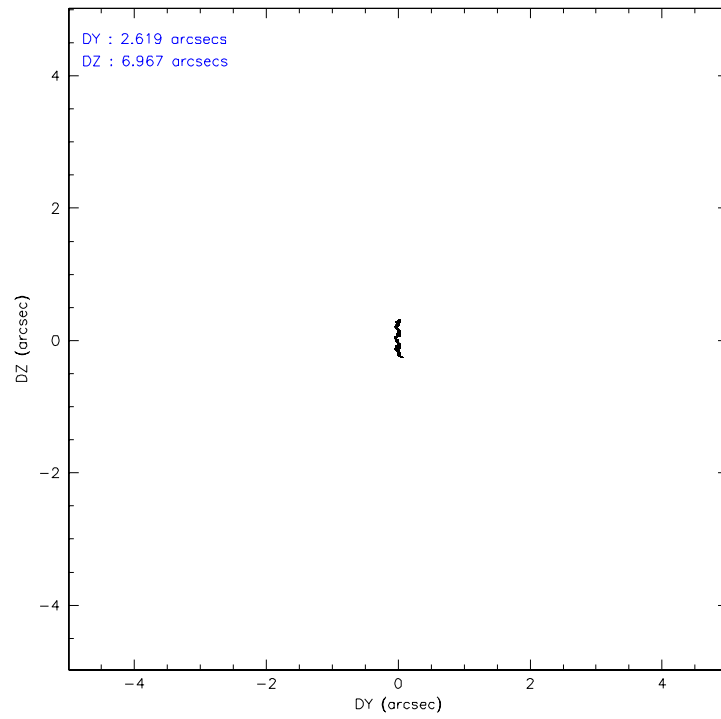
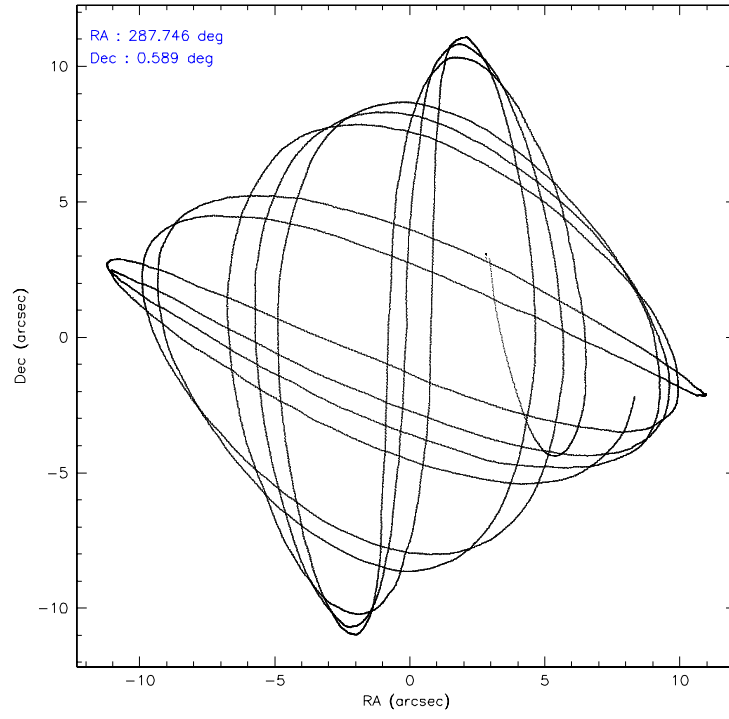
	ccd 7
level 1 events	10612
rejected events	5471
rejected %	51%

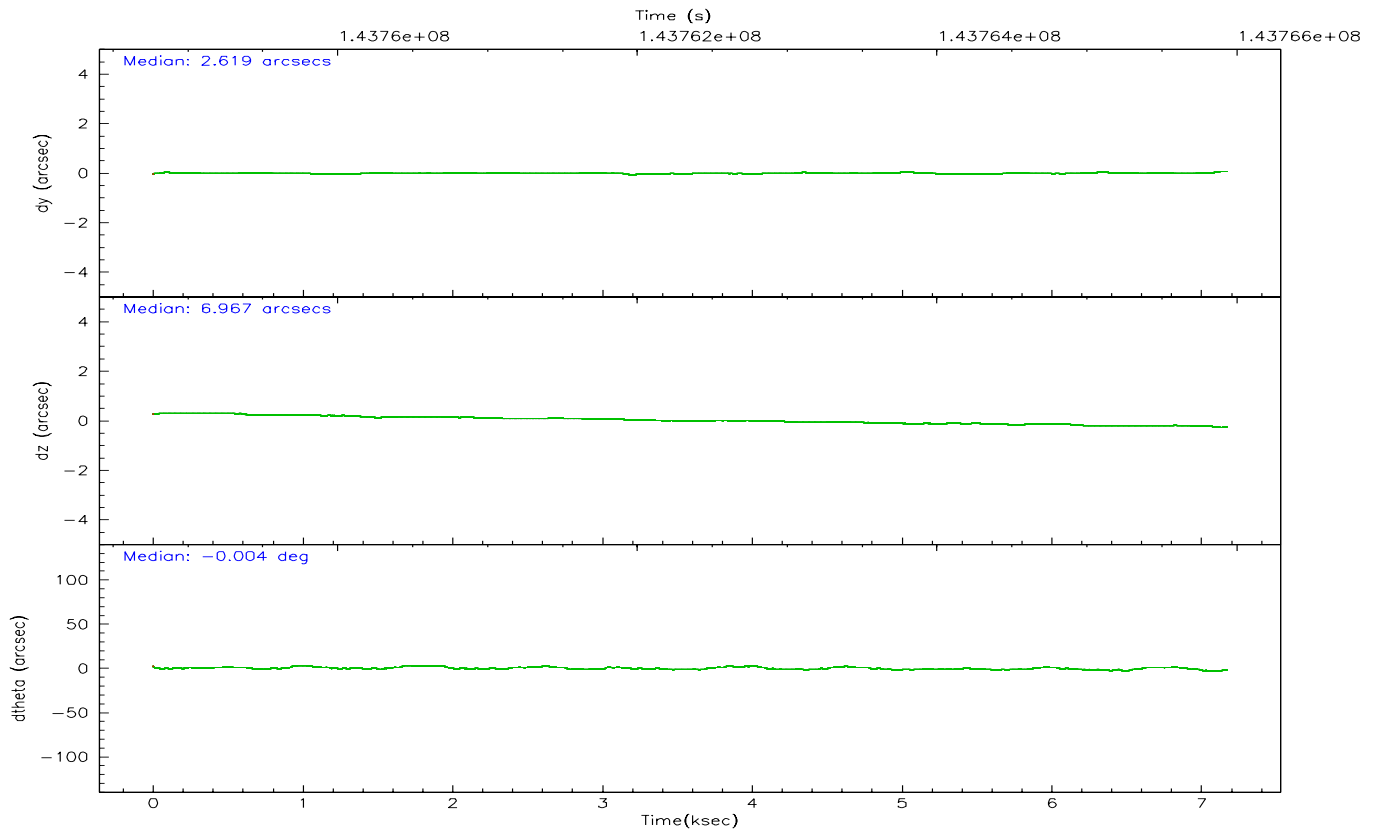
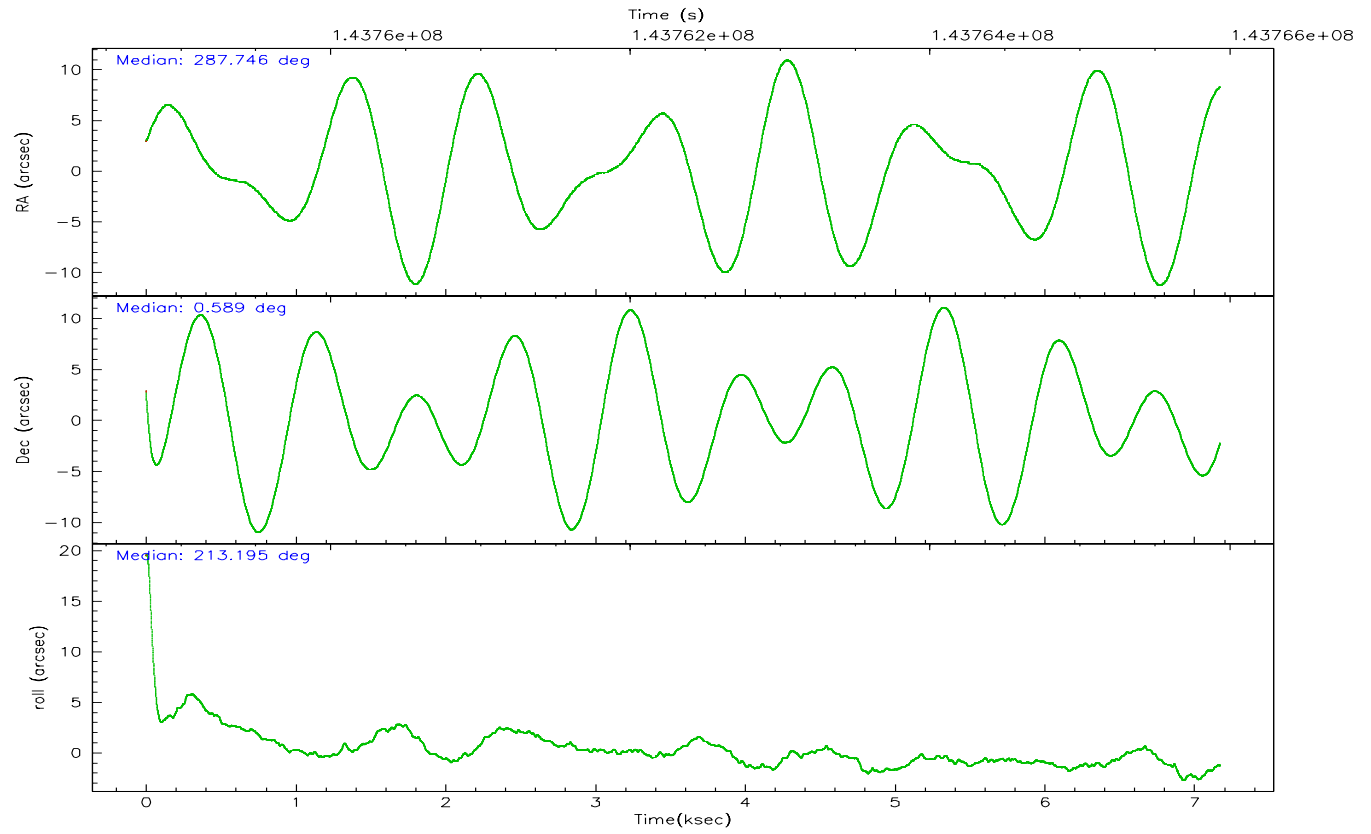
	ccd 7
grade 0 events	578
	5%
grade 1 events	9
	0%
grade 2 events	1306
	12%
grade 3 events	592
	5%
grade 4 events	576
	5%
grade 5 events	716
	6%
grade 6 events	2579
	24%
grade 7 events	4256
	40%

2.2 Compared Parameters

Parameter	Planned	Actual	Parameter	Planned	Actual
Instrument	ACIS	ACIS	Obspar format version number	6	6
Detector	ACIS-7	ACIS-7	Obspar file type	PREDICTED	ACTUAL
Grating	NONE	NONE	Obspar update status	NONE	UPDATED
Data mode	FAINT	FAINT	Number of optional ACIS chips dropped	0	0
Observation mode	POINTING	POINTING	On-chip summing requested	N	N
Pointing RA	287.757957	287.7460236667687	Subarray requested	CUSTOM	1/8
Pointing Dec	0.613817	0.5893280830818278	Subarray start row	150	150
Pointing Roll	213.041233	213.1980179185072	Subarray row count	128	128
SIM focus pos (mm)	-0.684267	-0.6828225247311905	Alternating exposures requested	N	N
SIM defocus (mm)	0	0.001444936568705701	Primary exposure time	0.000000	0.4
SIM translation stage pos (mm)	-190.132523	-190.1400660498719			
SIM translation stage offset (mm)	0	0.00754346686406393			
Observation start time	143758939.184000	143757910.08653			
Observation start date	2002-07-22T21:01:15	2002-07-22T20:45:10			
Observation end time	143765939.184000	143767408.76192			
Observation end date	2002-07-22T22:57:55	2002-07-22T23:23:28			
Read mode	TIMED	TIMED			

2.3 Aspect



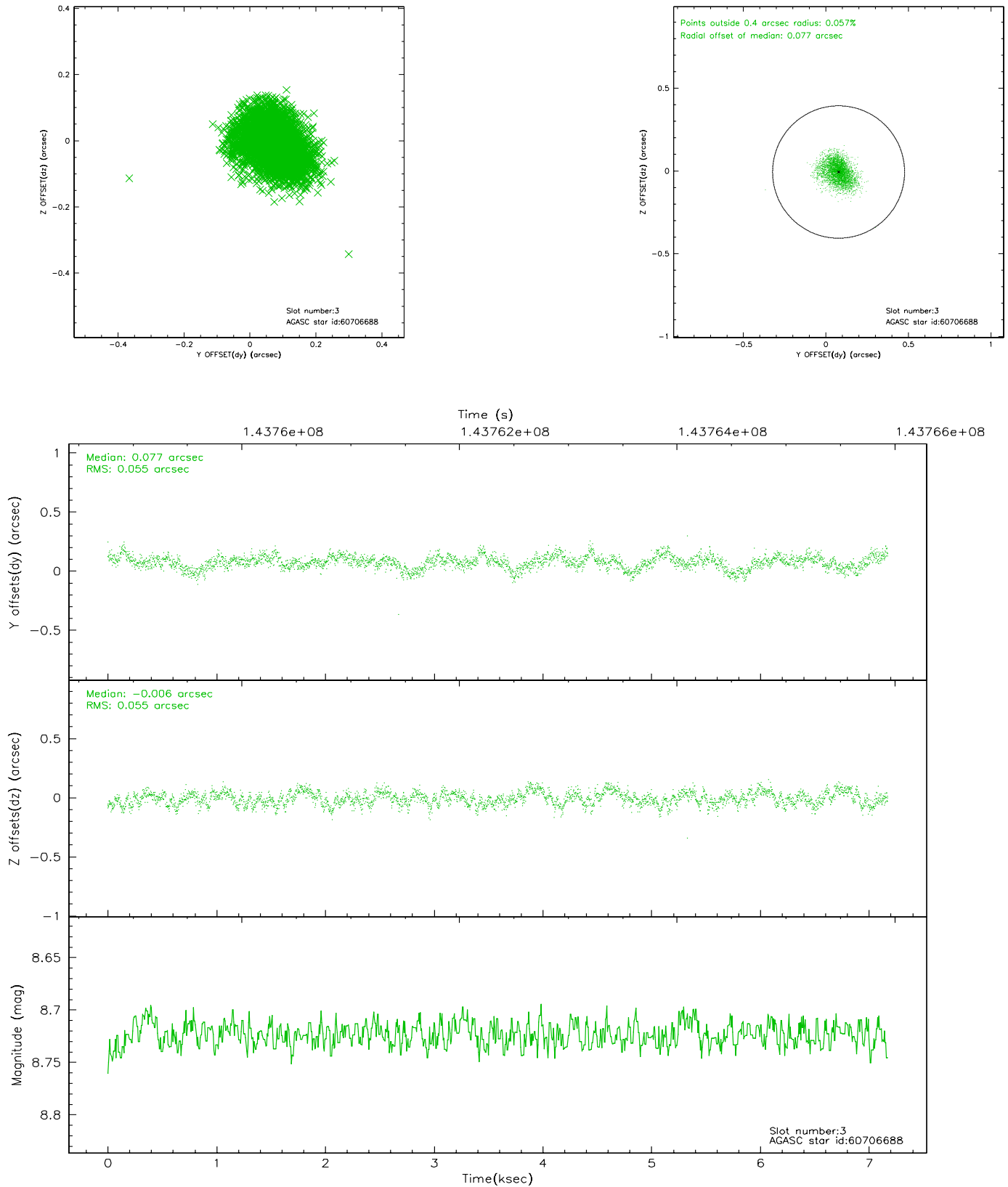


Slot Statistics

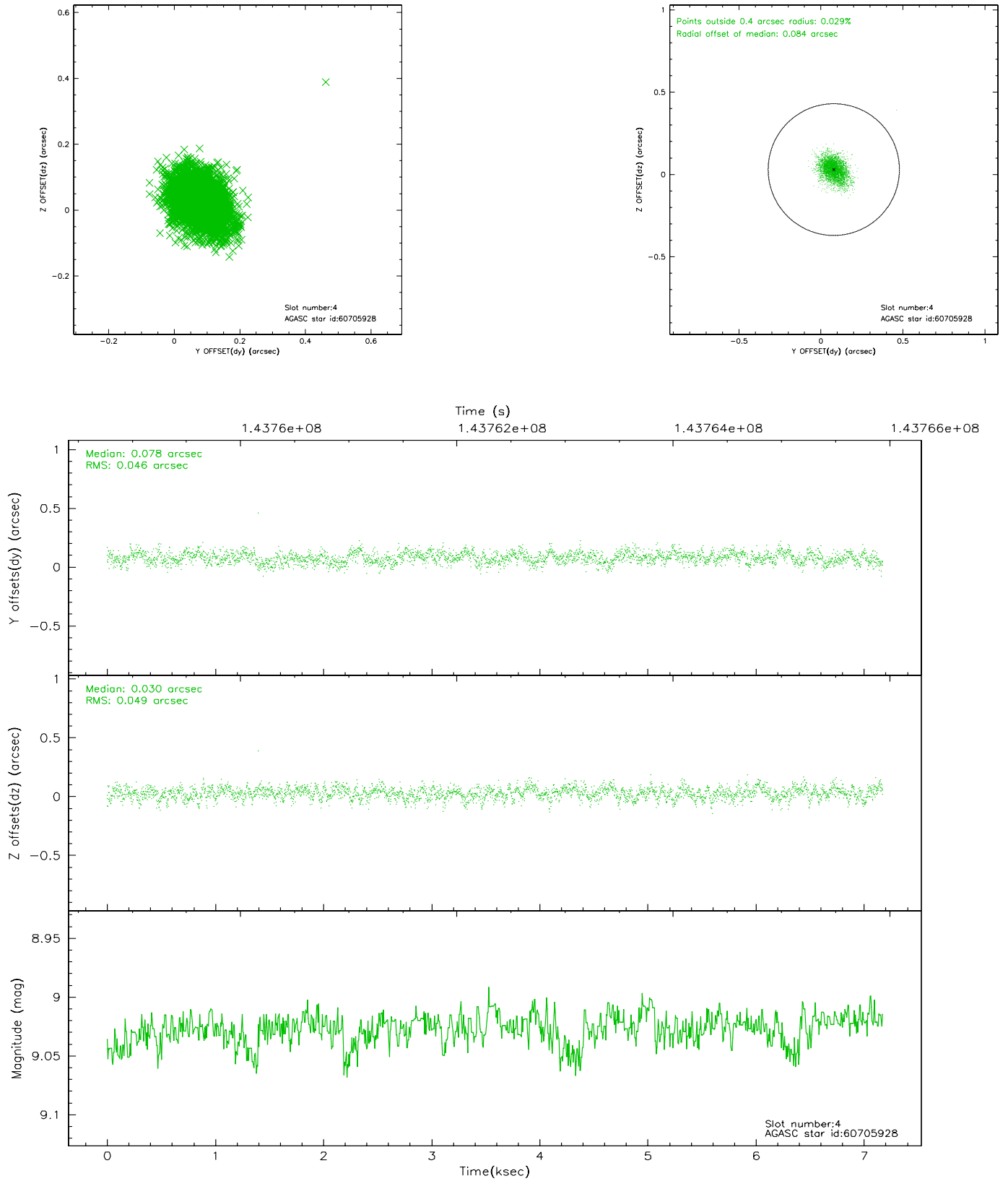
slot	status	id	mag	n_pts	med_dy	med_dz	dr1	dr2	ra	dec	mean_y	mean_z
0	FID	ACIS-S-2	7.11	1750	-0.001	0.041	0.011	0.020	0.000000	0.000000	-755.25	-1728.11
1	FID	ACIS-S-4	7.20	1750	-0.075	-0.010	0.010	0.019	0.000000	0.000000	2157.59	179.48
2	FID	ACIS-S-5	7.24	1750	0.045	-0.022	0.009	0.017	0.000000	0.000000	-1807.01	174.07
3	GUIDE	60706688	8.72	3500	0.077	-0.006	0.083	0.134	287.637938	0.689635	213.95	-465.06
4	GUIDE	60705928	9.03	3499	0.078	0.030	0.070	0.118	287.833535	0.715711	-427.41	-159.98
5	GUIDE	60694136	9.01	3499	-0.118	-0.005	0.098	0.153	287.735532	1.421294	-1516.95	-2481.77
6	GUIDE	60708936	9.18	3489	0.045	-0.076	0.085	0.137	287.407925	0.924863	445.82	-1627.16
7	GUIDE	672281216	9.32	3493	-0.077	0.050	0.085	0.136	287.454836	-0.067927	2253.48	1461.40

2.4 Star Slots

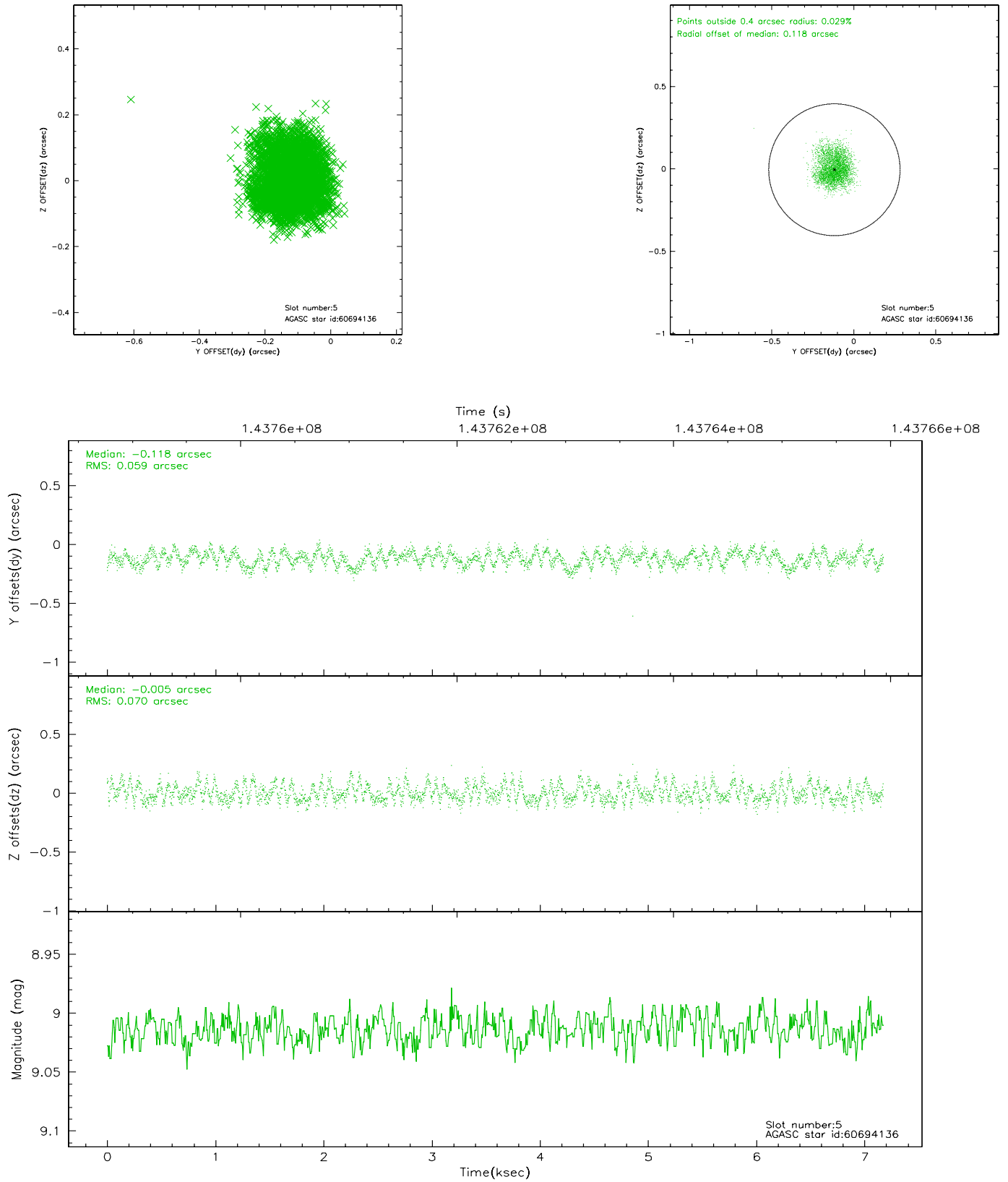
2.4.1 Slot 3



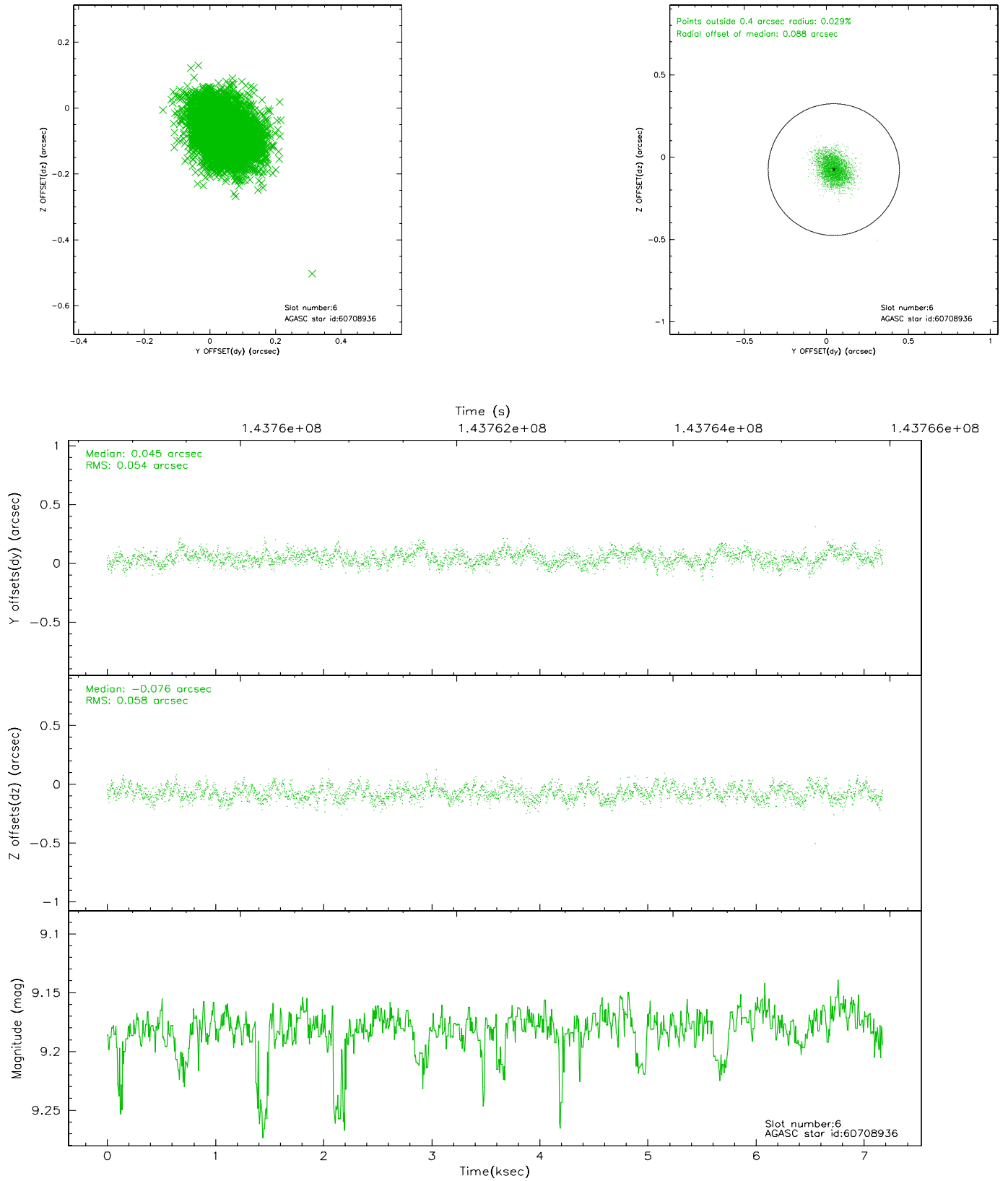
2.4.2 Slot 4



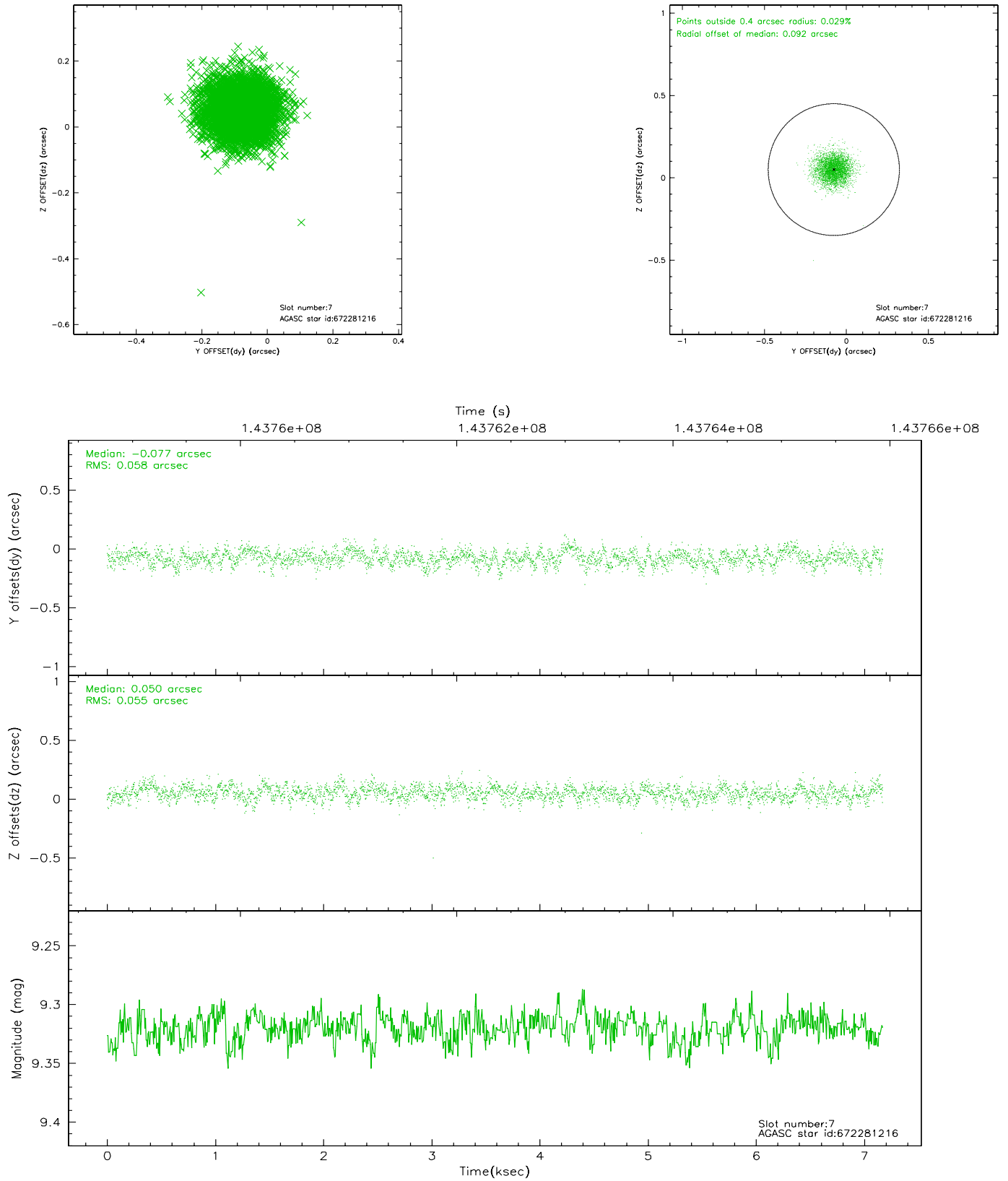
2.4.3 Slot 5



2.4.4 Slot 6

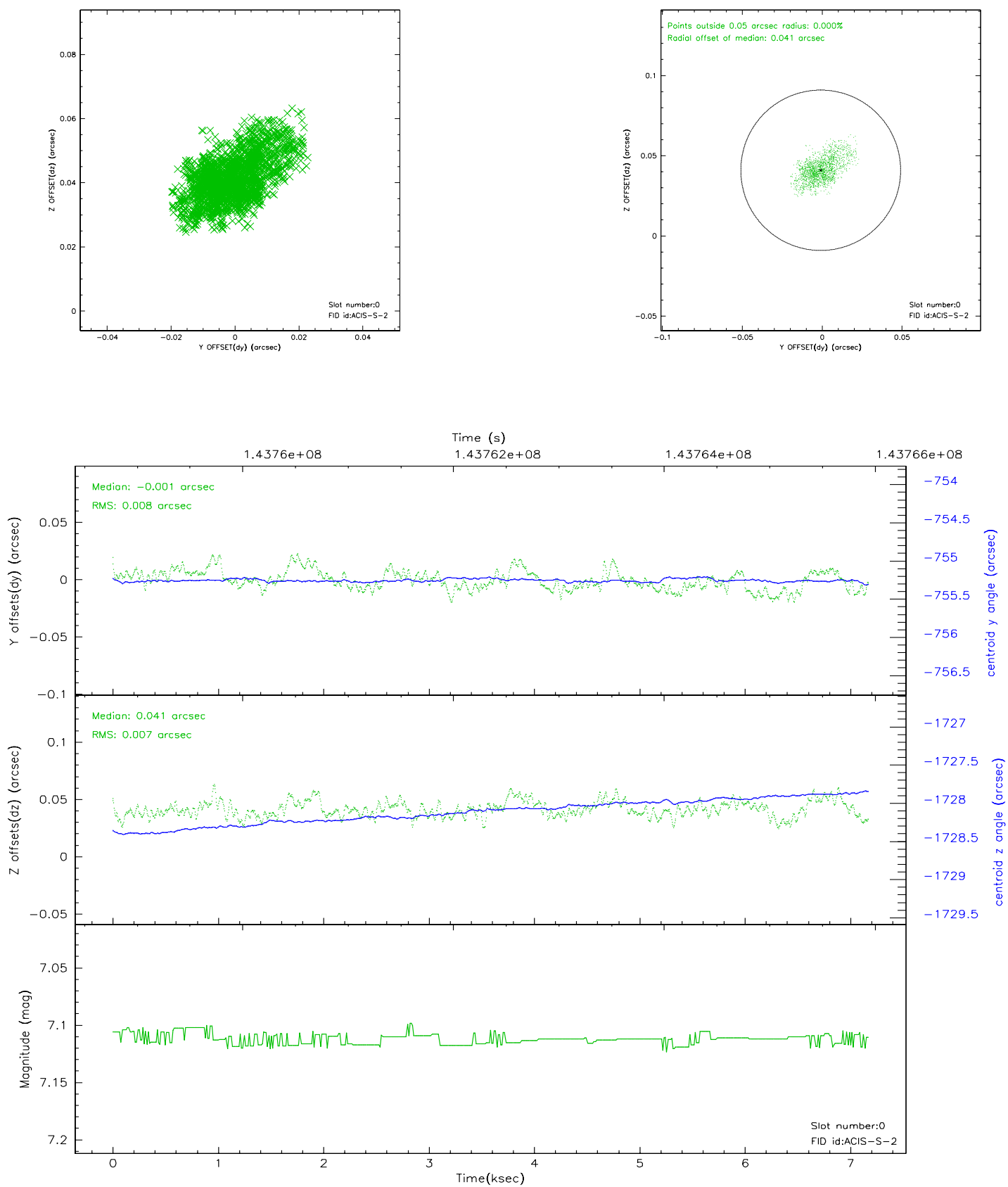


2.4.5 Slot 7

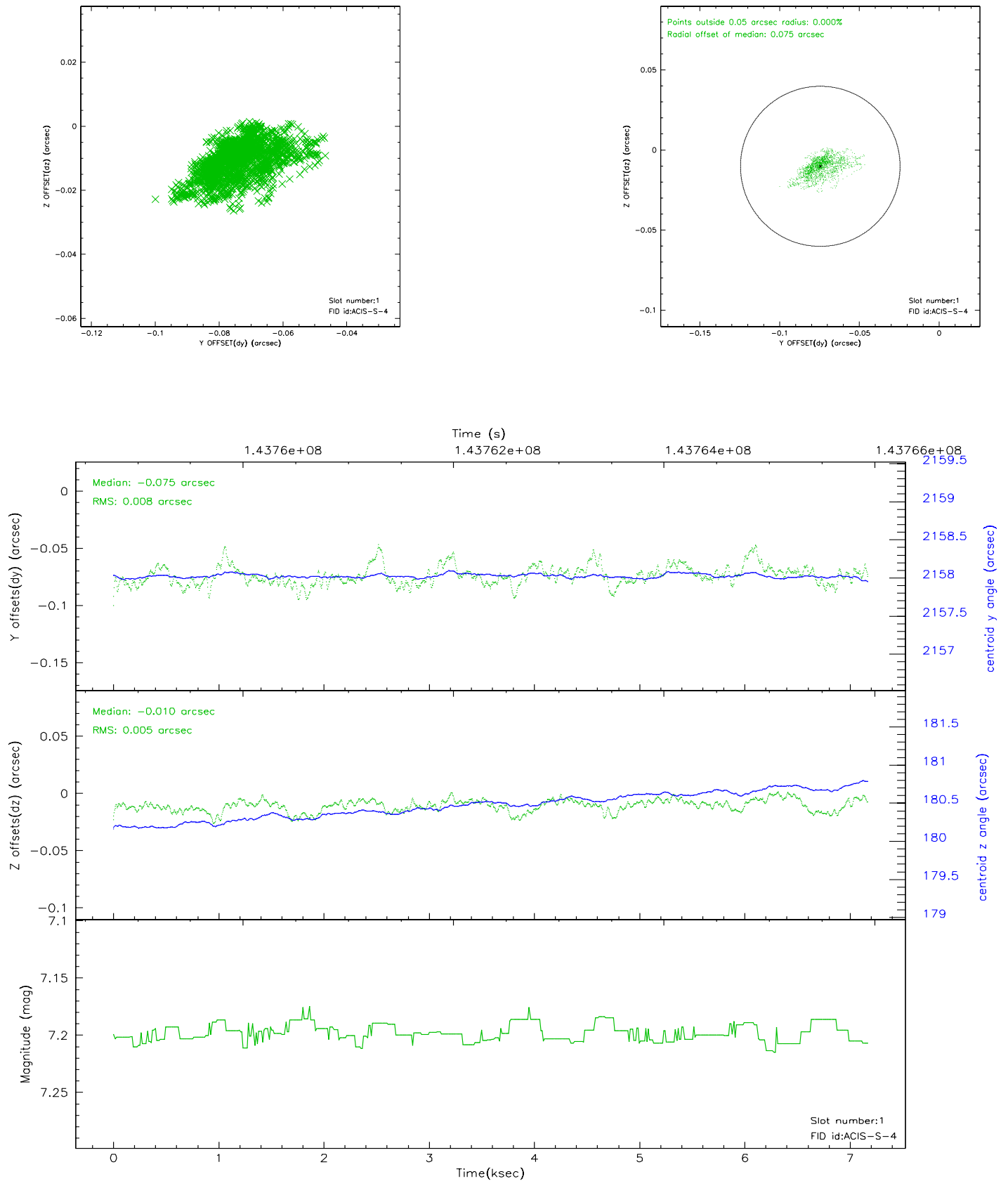


2.5 FID Slots

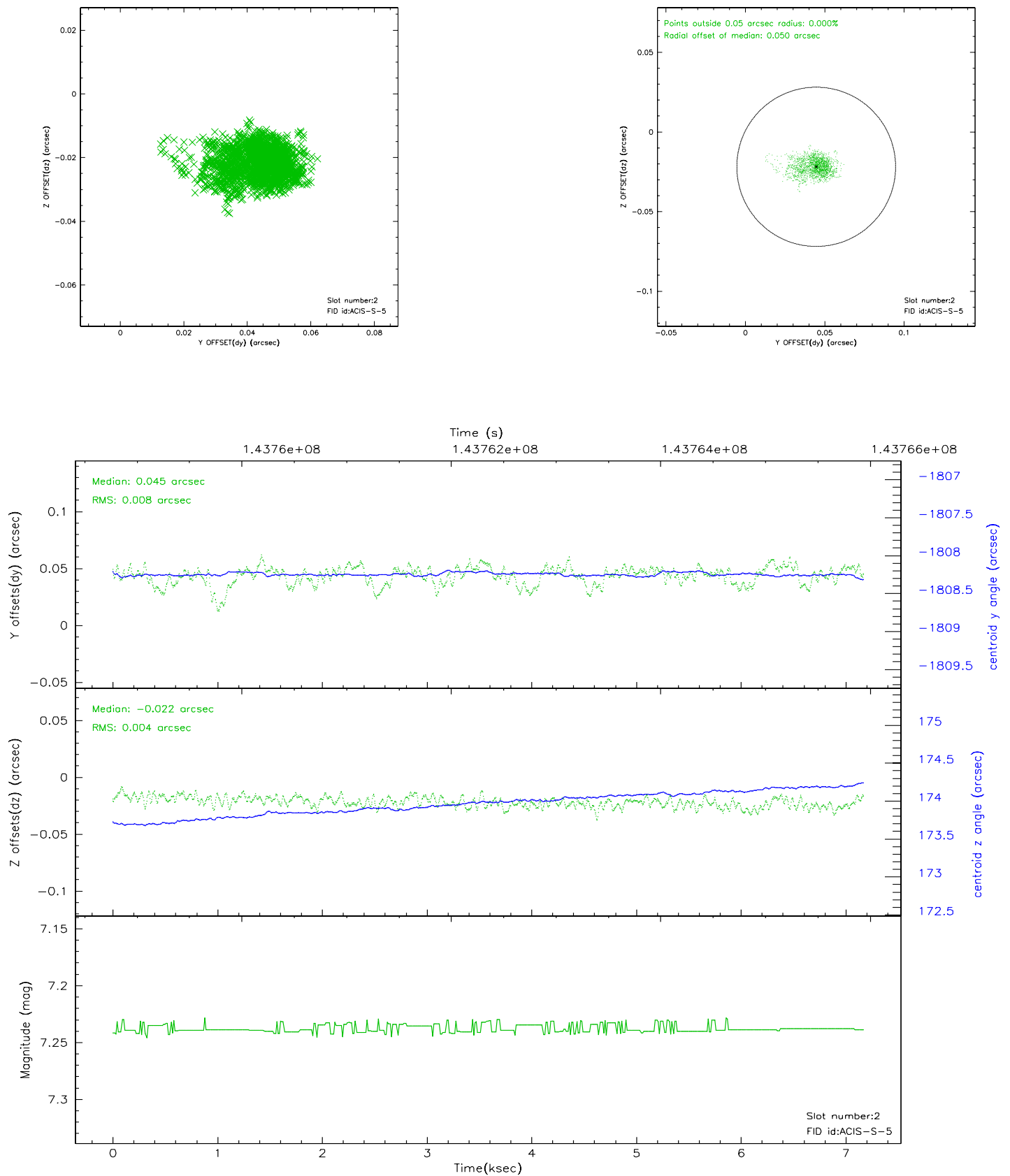
2.5.1 Slot 0



2.5.2 Slot 1



2.5.3 Slot 2



3 Point Sources

A Summary

A.1 Status

V&V Scientist	Jen Lauer
V&V Date (YYYY-MM-DD)	2006.09.26
V&V Edition	1
V&V Disposition and Status	OK
V&V Charge Time	7.172

A.2 Comments

Monitor constraint met.