

V&V Reference Report

L2 ASCDS Version : 8.4.5

Observation 3478 - L2 Version 3
Chandra X-Ray Center

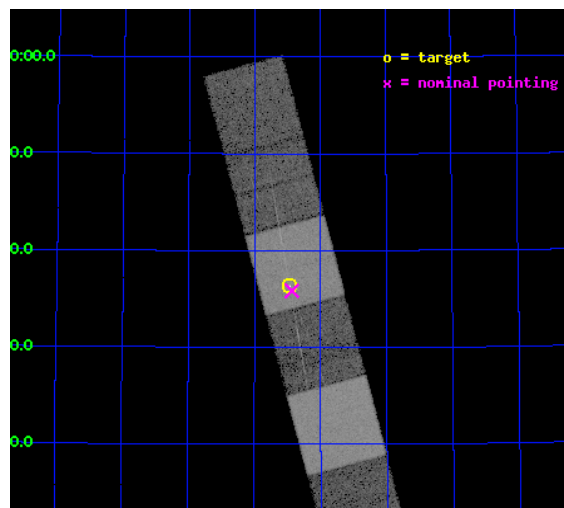
L2 Processing Date : Oct 4 2012

Contents

1	Front	2
2	OBI	3
2.1	OBI	3
2.1.1	Images	3
2.1.2	Bias	3
2.1.3	Parameters	4
2.1.4	Events	4
2.2	Compared Parameters	5
2.3	Aspect	6
2.4	Star Slots	9
2.4.1	Slot 3	9
2.4.2	Slot 4	10
2.4.3	Slot 5	11
2.4.4	Slot 6	12
2.4.5	Slot 7	13
2.5	FID Slots	14
2.5.1	Slot 0	14
2.5.2	Slot 1	15
2.5.3	Slot 2	16
3	Gratings	17
3.1	HEG Arm	17
3.2	MEG Arm	19
A	Summary	21
A.1	Status	21
A.2	Comments	21

1 Front

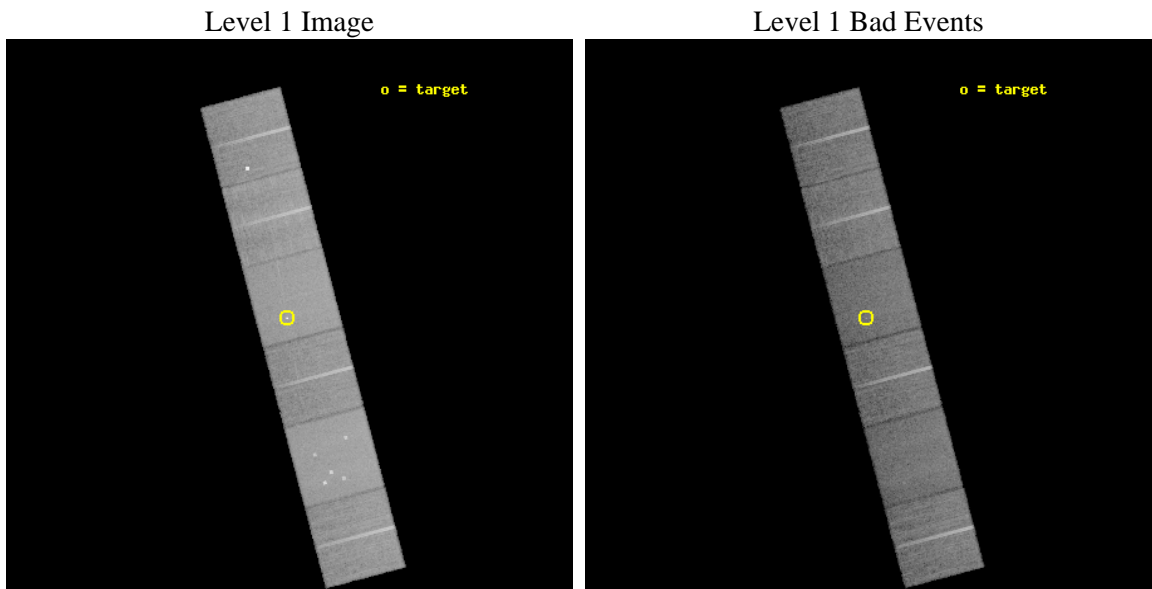
seq_num	300081	Sequence number
obs_id	3478	Observation id
title	CHANDRA GRATING SPECTROSCOPY OF DWARF NOVAE	Proposal title
observer	Dr Peter Wheatley	Principal investigator
object	SU UMA	Source name
dtcycle	0	
cycle	P	events from which exps? Prim/Second/Both
ra_targ	123.1175	Observer's specified target RA [deg]
dec_targ	62.606389	Observer's specified target Dec [deg]
ra_nom	123.10856074056	Nominal RA [deg]
dec_nom	62.597593435299	Nominal Dec [deg]
roll_nom	255.16457171512	Nominal Roll [deg]
revision	3	Processing version of data
ontime	23759.999911487	Sum of GTIs [s]
livetime	23459.136486054	Livetime [s]
ontime4	23759.999911487	Sum of GTIs [s]
ontime5	23759.999911487	Sum of GTIs [s]
ontime6	23753.517971069	Sum of GTIs [s]
ontime7	23759.999911487	Sum of GTIs [s]
ontime8	23759.999911487	Sum of GTIs [s]
ontime9	23759.999911487	Sum of GTIs [s]
l2events	229259	Number of level 2 events



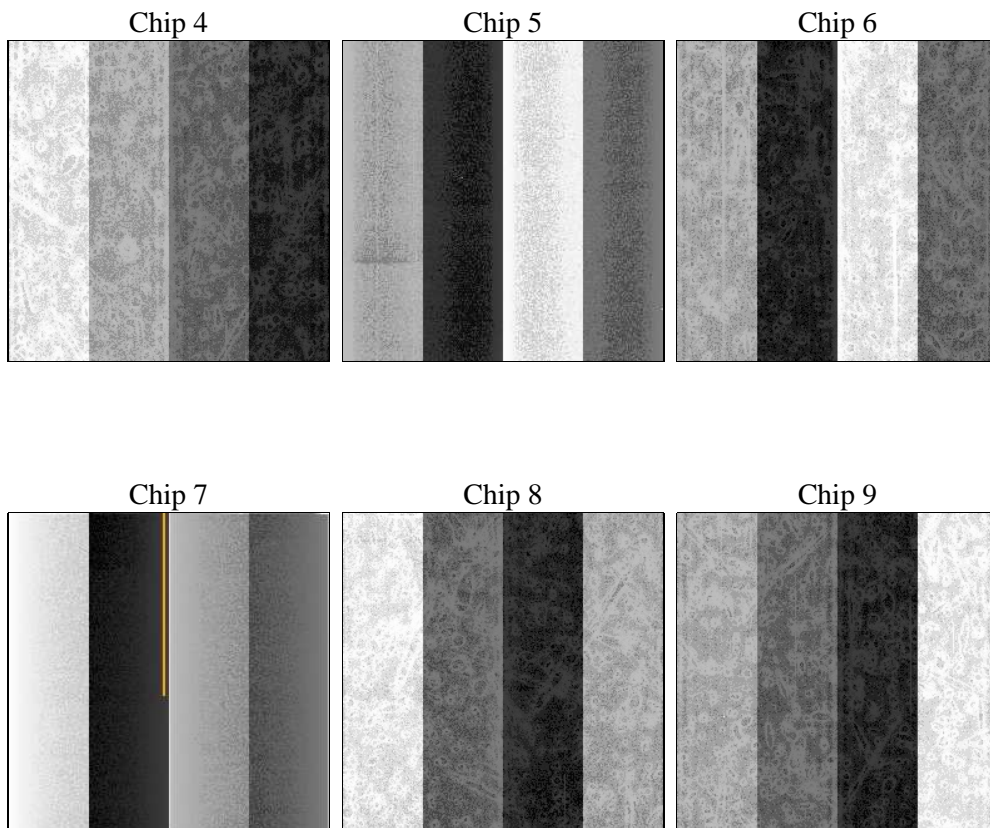
2 OBI

2.1 OBI

2.1.1 Images



2.1.2 Bias



2.1.3 Parameters

obi_num	2	Obi number	sched_exp_time	24037.273000	[s] Scheduled observation exposure time
ascdsver	8.4.5	Processing system revision	ontime	23759.999911487	Sum of GTIs [s]
caldsver	4.5.2	 	ontime4	23759.999911487	Sum of GTIs [s]
date	2012-10-04T19:21:45	Date and time of file creation	ontime5	23759.999911487	Sum of GTIs [s]
revision	3	Processing version of data	ontime6	23753.517971069	Sum of GTIs [s]
			ontime7	23759.999911487	Sum of GTIs [s]
			ontime8	23759.999911487	Sum of GTIs [s]
			ontime9	23759.999911487	Sum of GTIs [s]
			l1events	1059403	Number of level 1 events

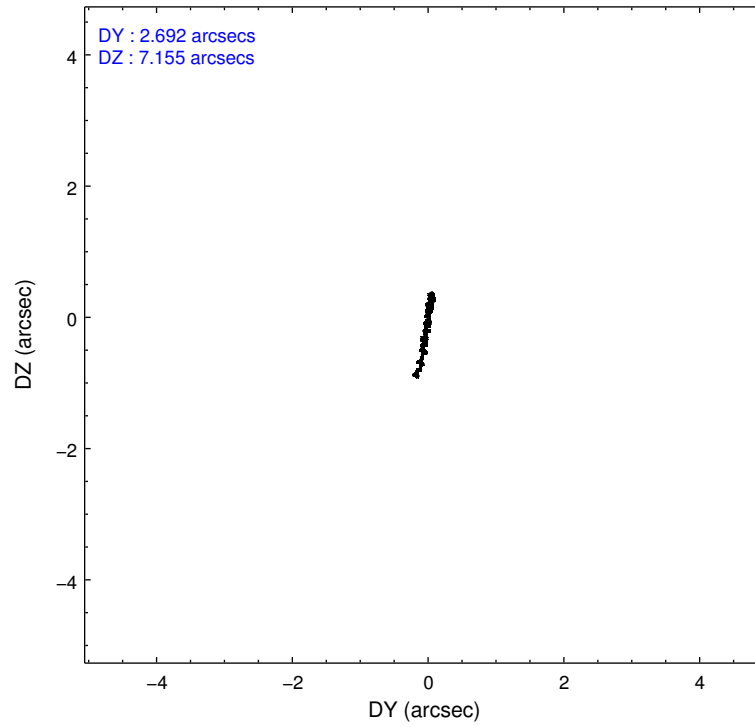
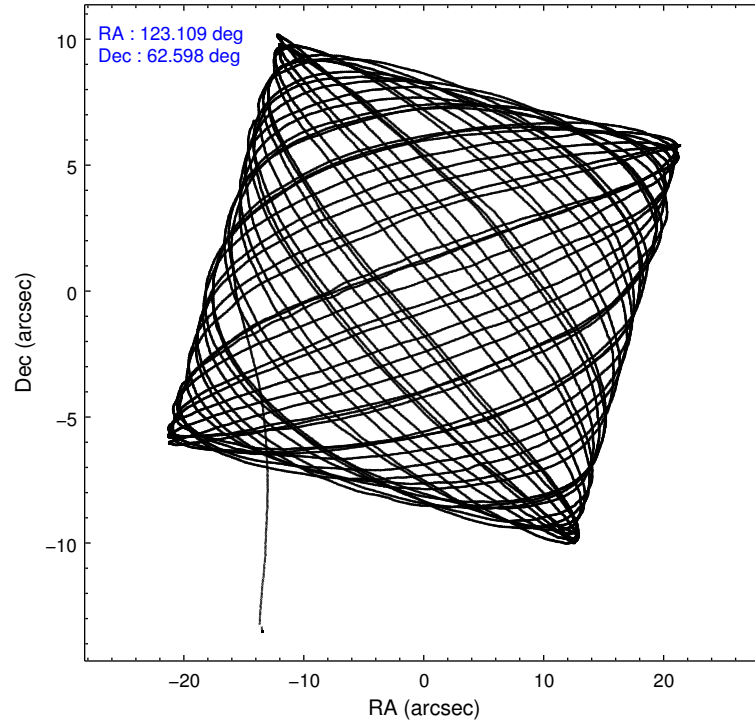
2.1.4 Events

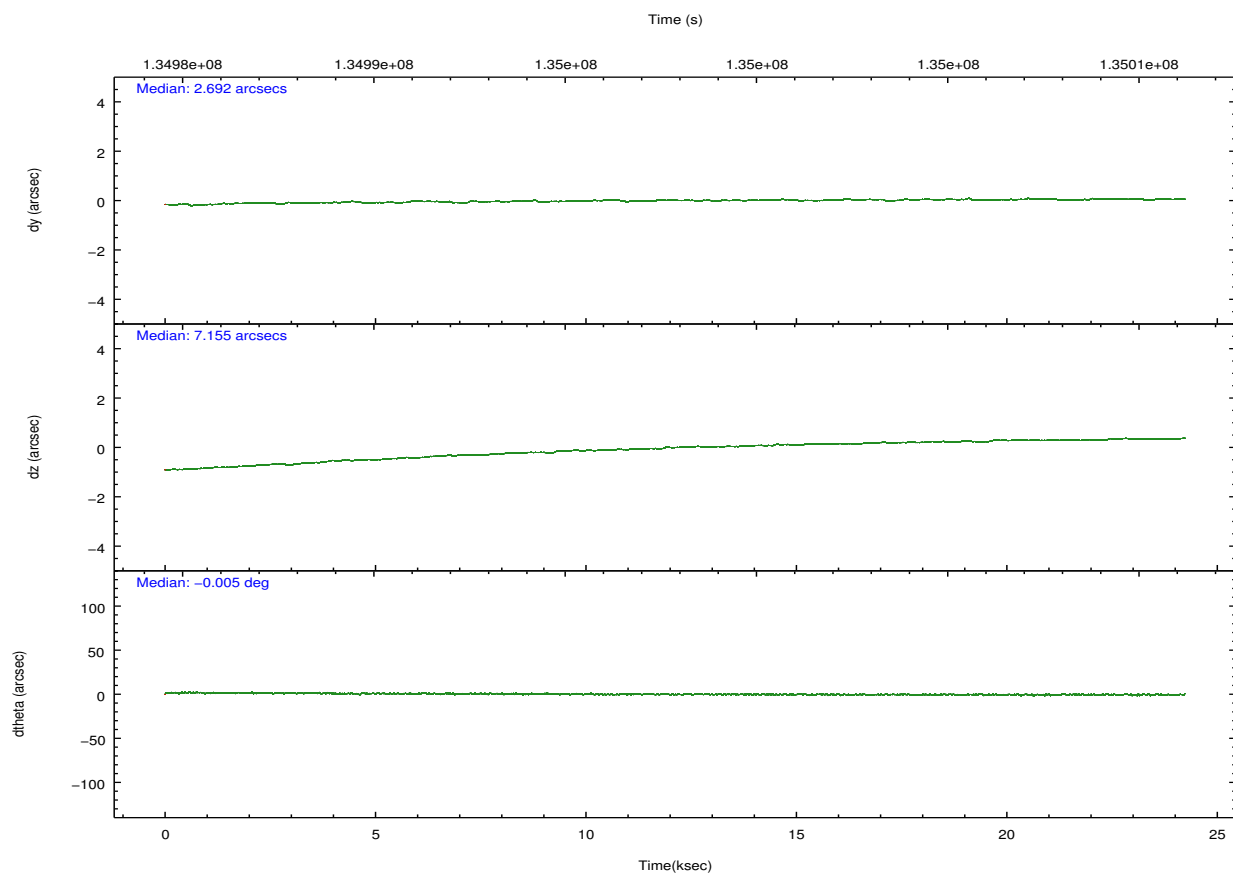
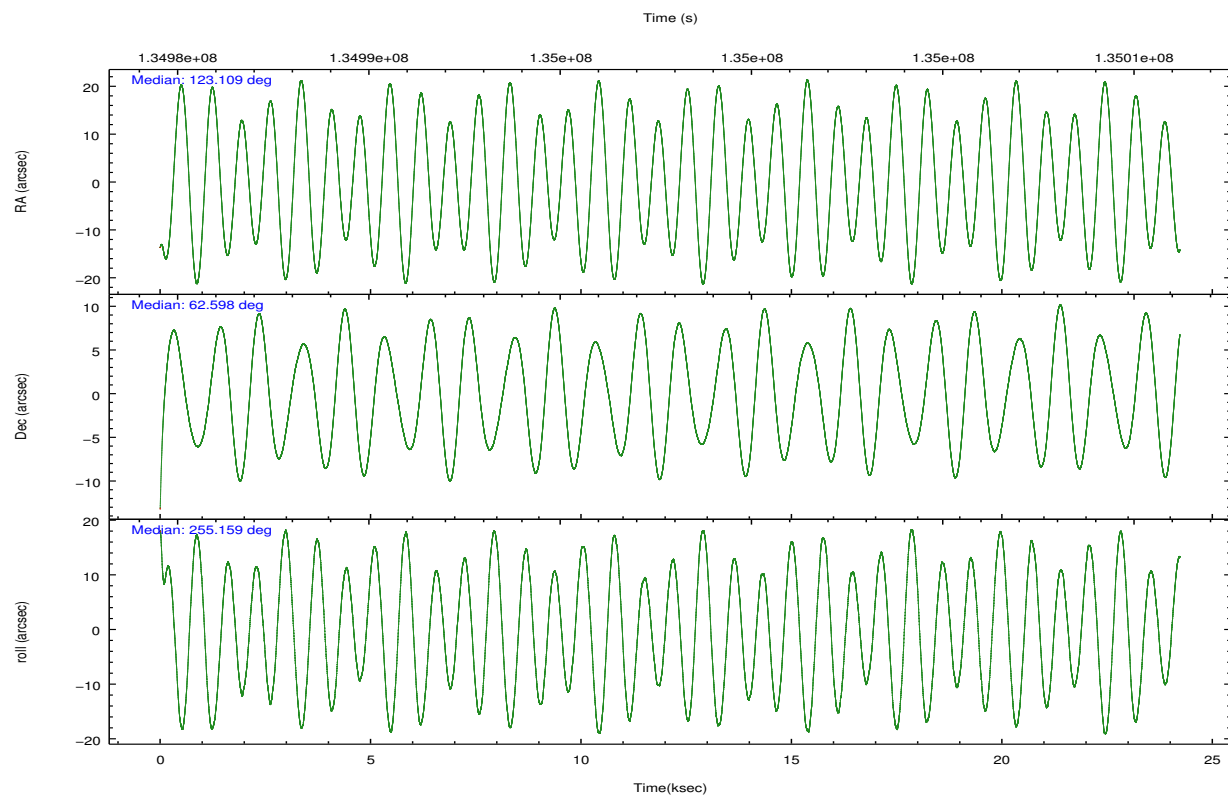
	ccd 4	ccd 5	ccd 6	ccd 7	ccd 8	ccd 9		ccd 4	ccd 5	ccd 6	ccd 7	ccd 8	ccd 9
level 1 events	162536	214007	147831	195148	186467	153414	grade 0 events	7064	12575	7020	7256	12178	10008
rejected events	144669	115769	130387	114519	148741	129252		4%	5%	4%	3%	6%	6%
rejected %	89%	54%	88%	58%	79%	84%	grade 1 events	77	400	85	204	104	77
								0%	0%	0%	0%	0%	0%
							grade 2 events	4326	27649	3497	15976	8030	7125
								2%	12%	2%	8%	4%	4%
							grade 3 events	1588	3932	1748	7242	4143	1768
								0%	1%	1%	3%	2%	1%
							grade 4 events	1662	3671	1754	7243	3896	1728
								1%	1%	1%	3%	2%	1%
							grade 5 events	5485	15602	6337	18475	8178	6572
								3%	7%	4%	9%	4%	4%
							grade 6 events	3231	50429	3432	42934	9485	3546
								1%	23%	2%	22%	5%	2%
							grade 7 events	139103	99749	123958	95818	140453	122590
								85%	46%	83%	49%	75%	79%

2.2 Compared Parameters

Parameter	Planned	Actual	Parameter	Planned	Actual
Instrument	ACIS	ACIS	Obspar format version number	7	7
Detector	ACIS-456789	ACIS-456789	Obspar file type	PREDICTED	ACTUAL
Grating	HETG	HETG	Obspar update status	NONE	UPDATED
Data mode	FAINT	FAINT	Number of optional ACIS chips dropped	0	0
Observation mode	POINTING	POINTING	On-chip summing requested	N	N
[deg] Pointing RA	123.092374	123.1085607405561	Subarray requested	NONE	NONE
[deg] Pointing Dec	62.623804	62.59759343529924	Alternating exposures requested	N	N
[deg] Pointing Roll	255.022309	255.1645717151198	[s] Primary exposure time	0.000000	3.2
[mm] SIM focus pos	-0.684267	-0.6828225247311905			
[mm] SIM defocus	0	0.001444936568705701			
[mm] SIM translation stage pos	-187.132523	-187.1254020033014			
[mm] SIM translation stage offset	-3	-3.007120579706367			
[s] Observation start time (MET)	134985953.184000	134984978.80298			
Observation start date	2002-04-12T08:04:49	2002-04-12T07:49:38			
[s] Observation end time (MET)	135009990.184000	135010305.01651			
Observation end date	2002-04-12T14:45:26	2002-04-12T14:51:45			
Read mode	TIMED	TIMED			

2.3 Aspect



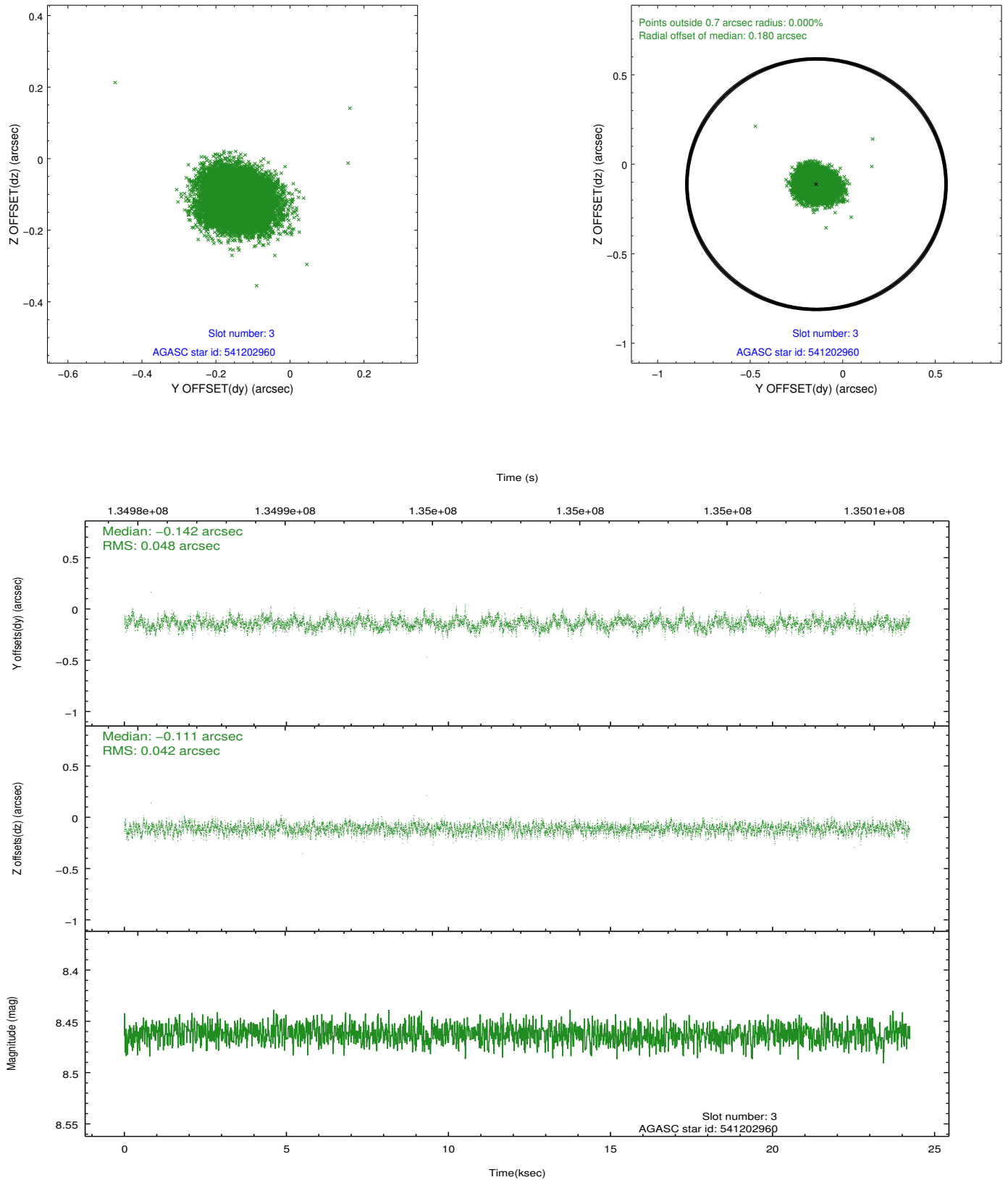


Slot Statistics

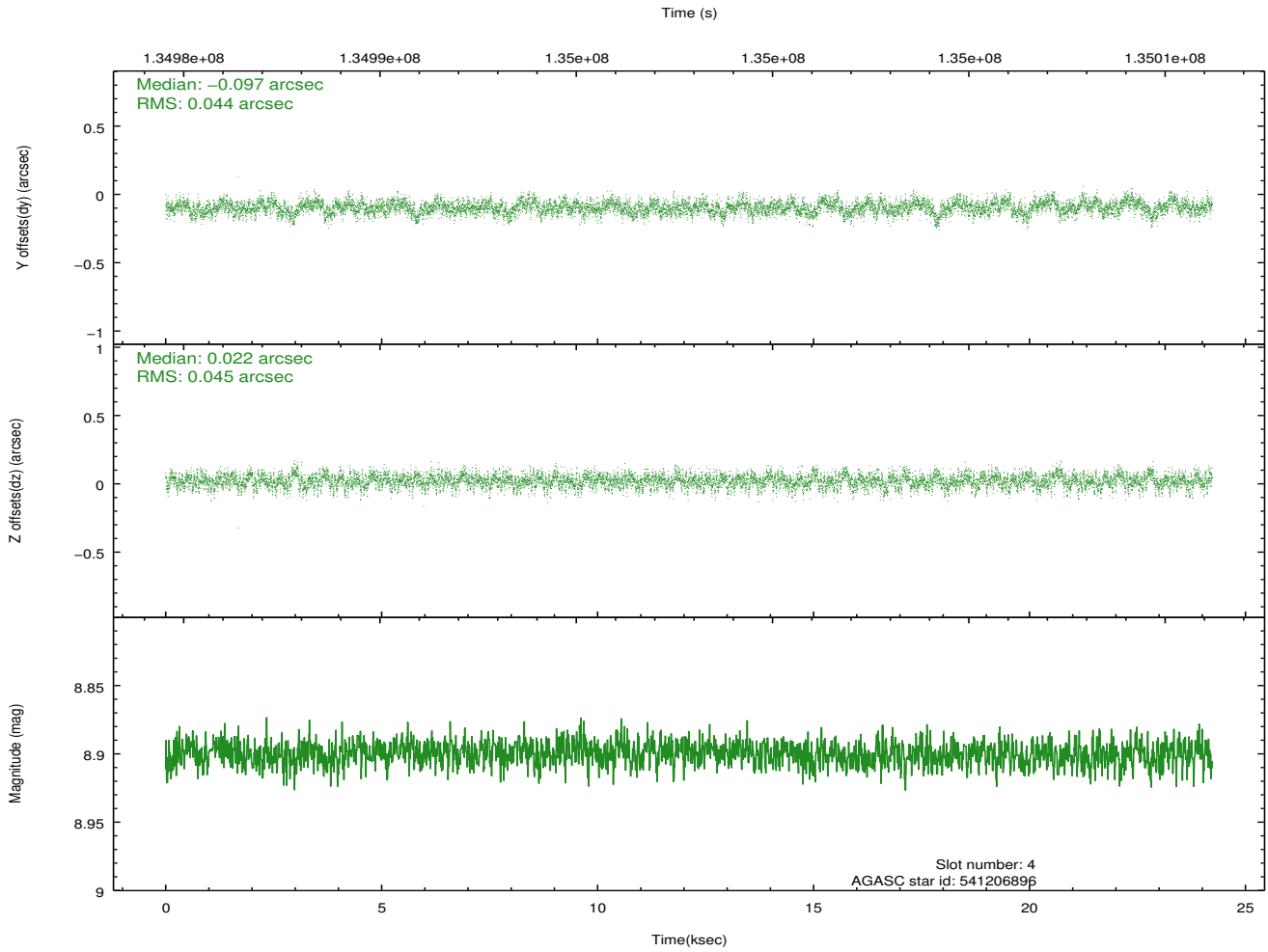
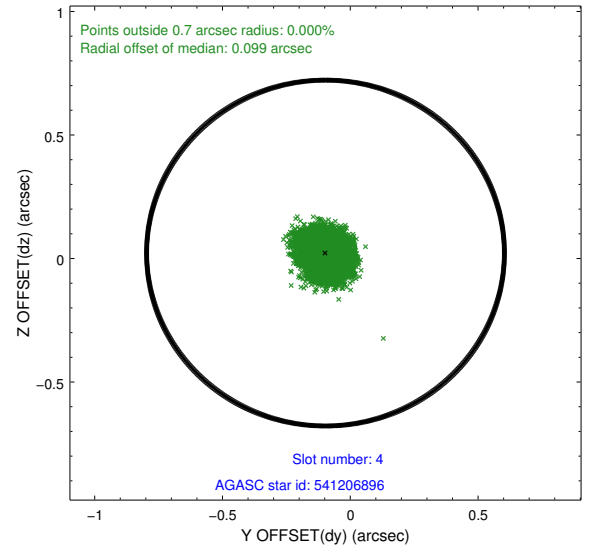
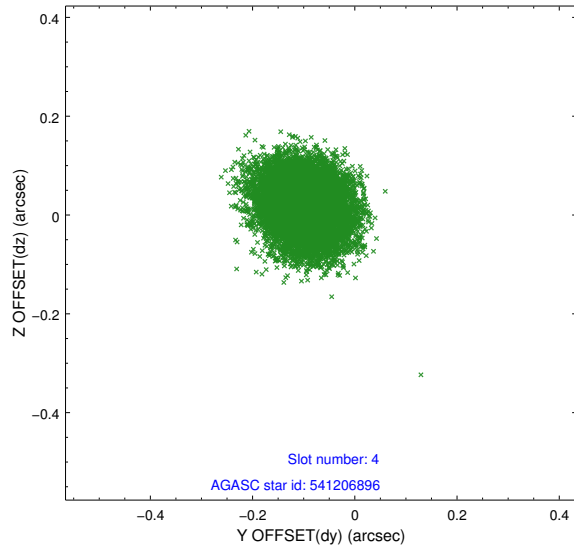
slot	status	id	mag	n_pts	med_dy	med_dz	dr1	dr2	ra	dec	mean_y	mean_z
0	FID	ACIS-S-2	7.10	5908	-0.042	-0.020	0.007	0.014	0.000000	0.000000	-755.11	-1790.33
1	FID	ACIS-S-4	7.20	5908	0.008	0.033	0.006	0.010	0.000000	0.000000	2158.12	118.11
2	FID	ACIS-S-6	7.38	5910	0.007	-0.006	0.007	0.012	0.000000	0.000000	407.04	755.58
3	GUIDE	541202960	8.46	11819	-0.142	-0.111	0.068	0.110	123.440669	63.103953	-1816.96	100.65
4	GUIDE	541206896	8.90	11814	-0.097	0.022	0.067	0.109	122.742968	63.137211	-1638.79	-1027.46
5	GUIDE	540805584	9.04	11819	0.039	-0.055	0.108	0.173	121.852449	62.486103	994.17	-1869.11
6	GUIDE	540816416	9.06	11812	0.155	0.090	0.072	0.117	123.696049	62.036637	1775.56	1529.49
7	GUIDE	540804688	9.50	11808	0.042	0.061	0.118	0.189	124.194446	62.208412	952.86	2169.44

2.4 Star Slots

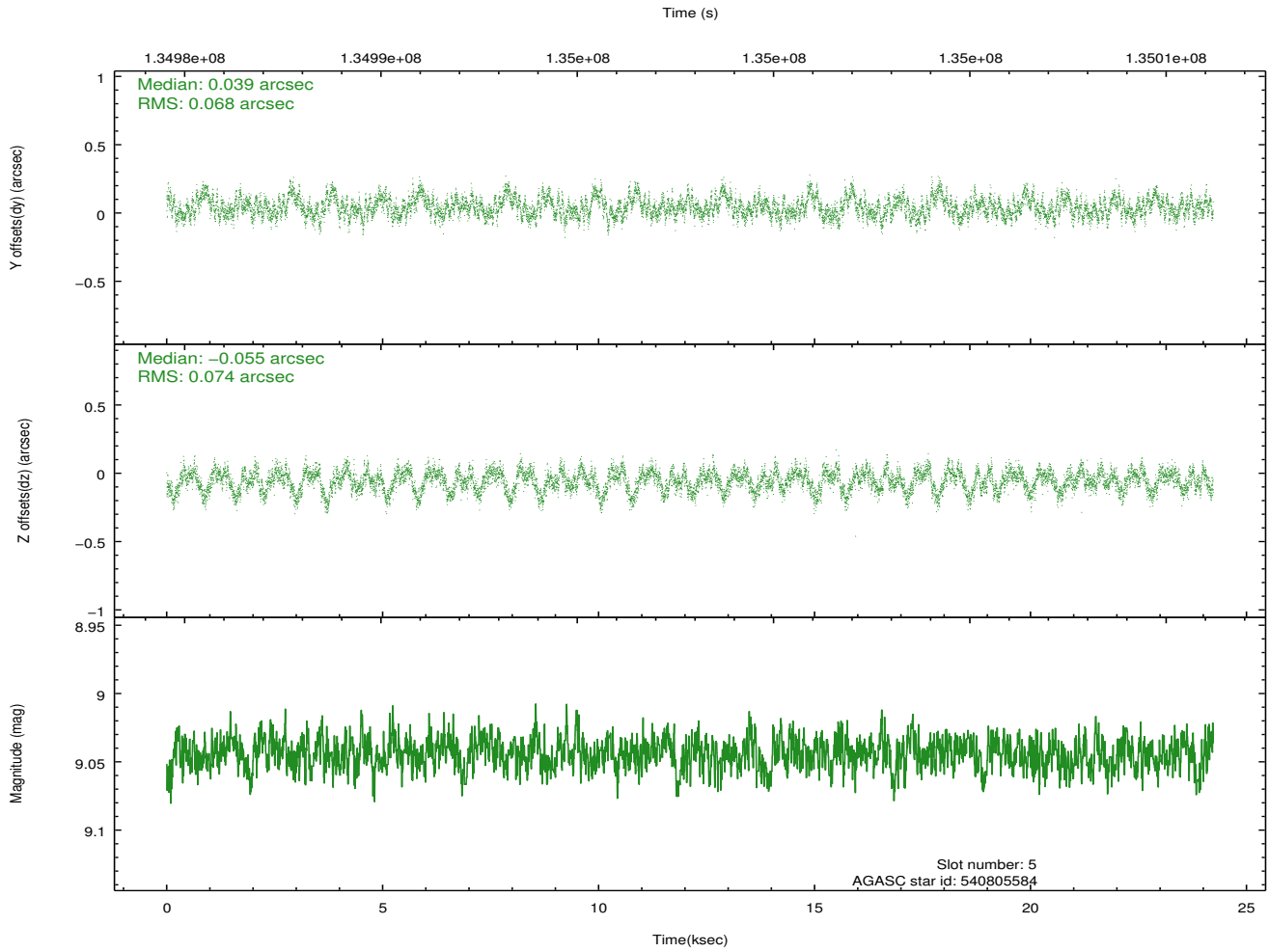
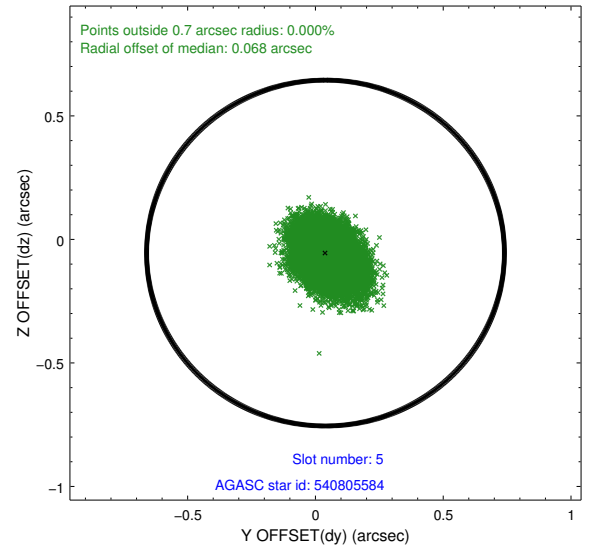
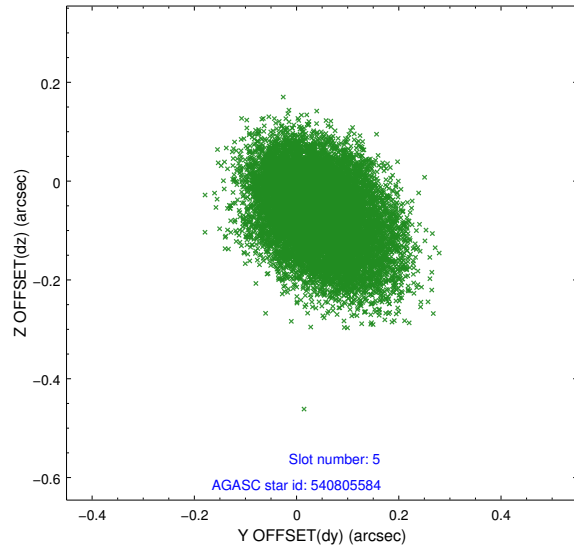
2.4.1 Slot 3



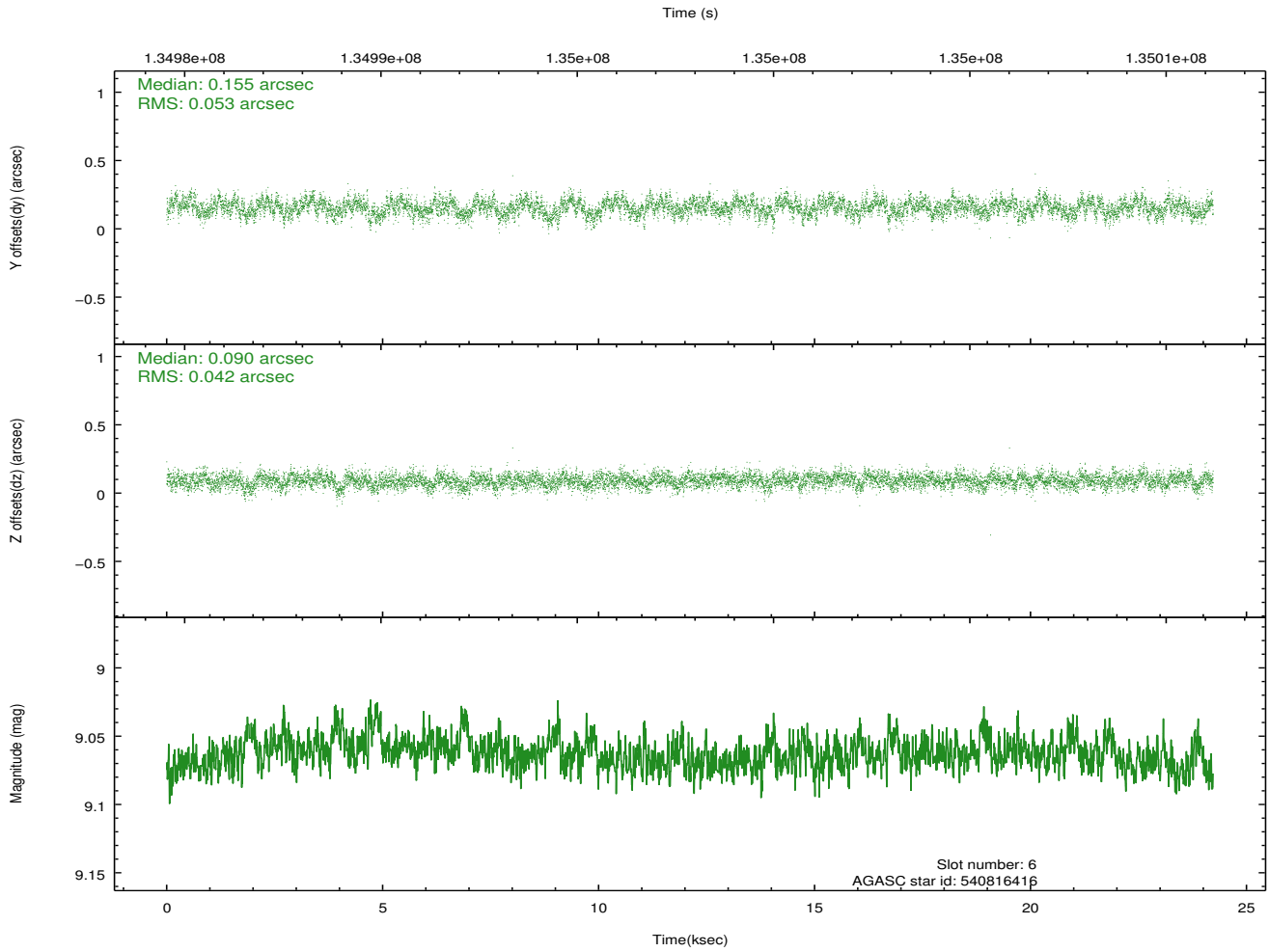
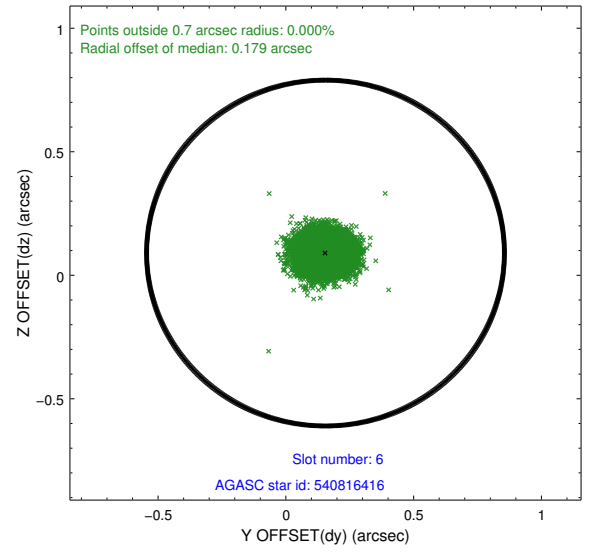
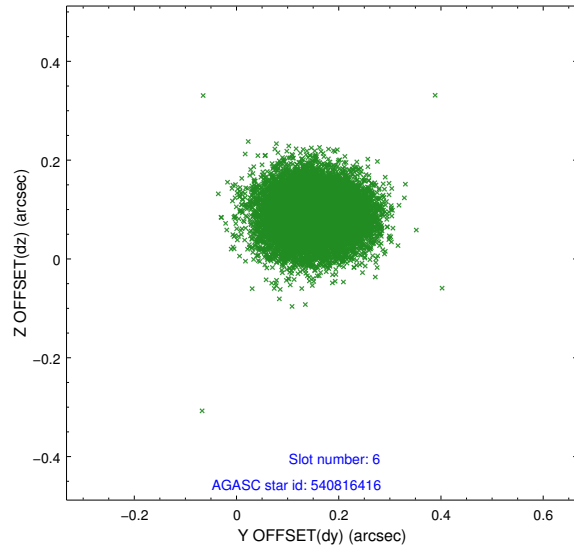
2.4.2 Slot 4



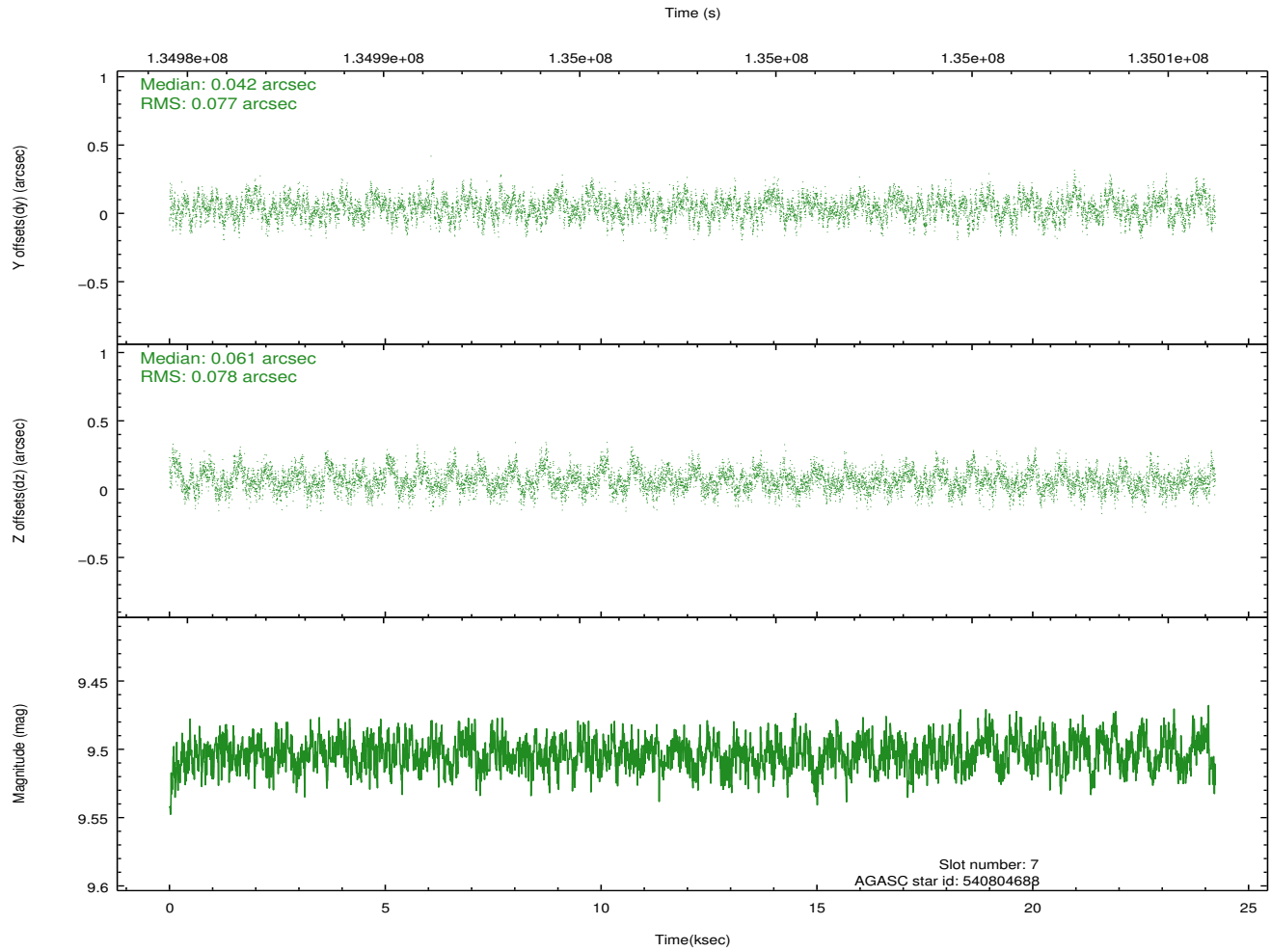
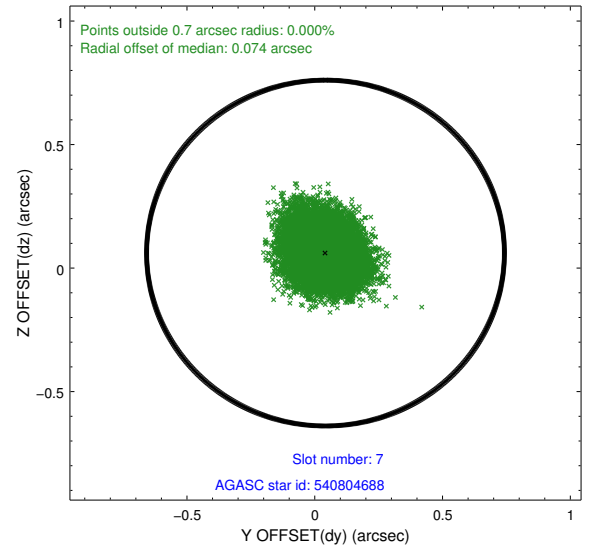
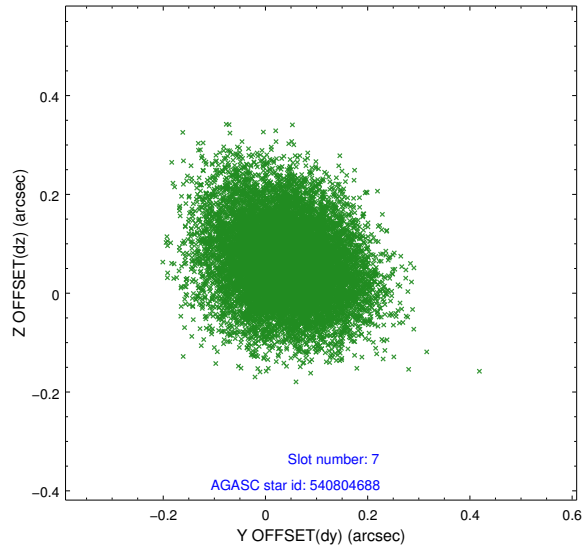
2.4.3 Slot 5



2.4.4 Slot 6

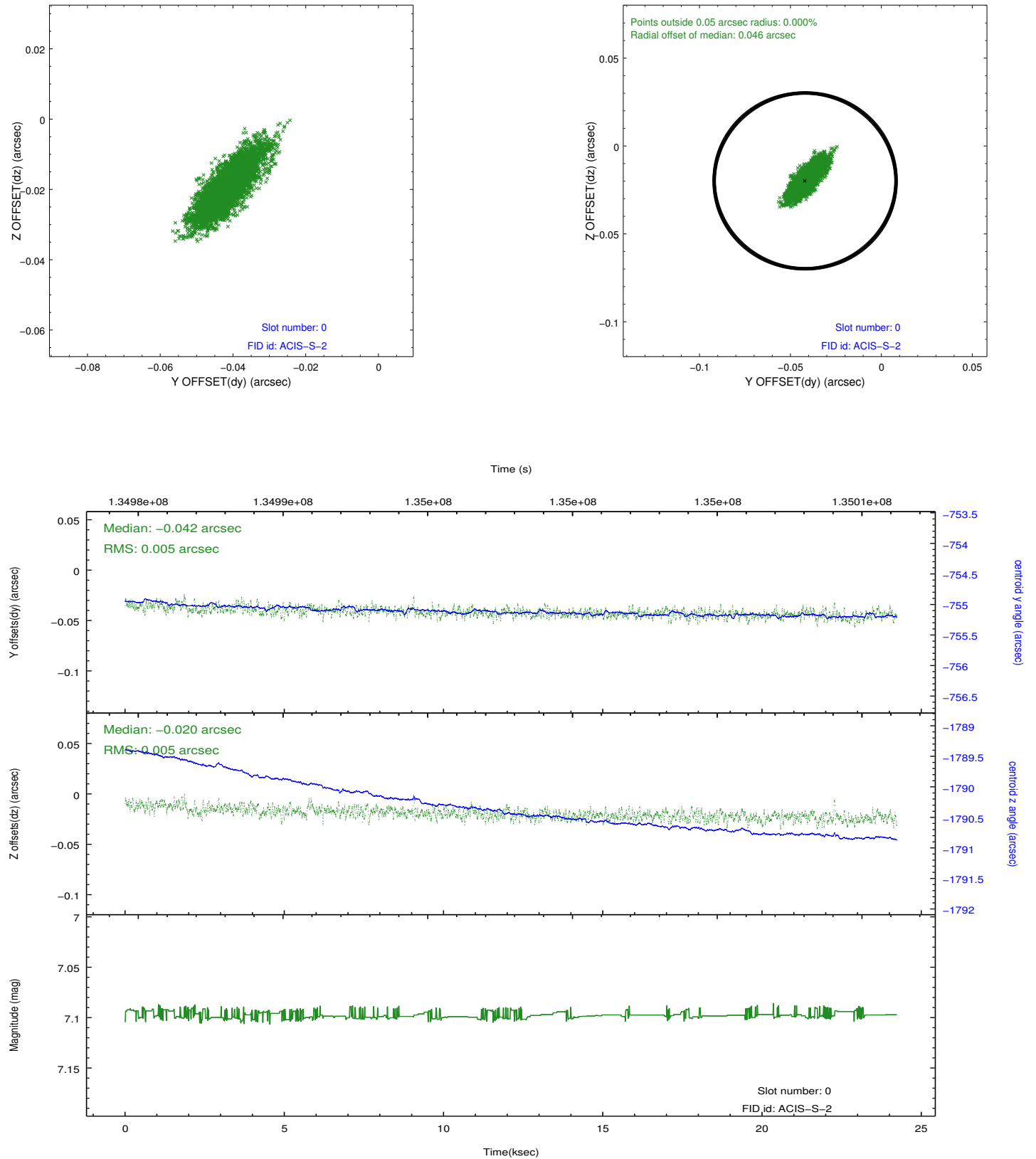


2.4.5 Slot 7

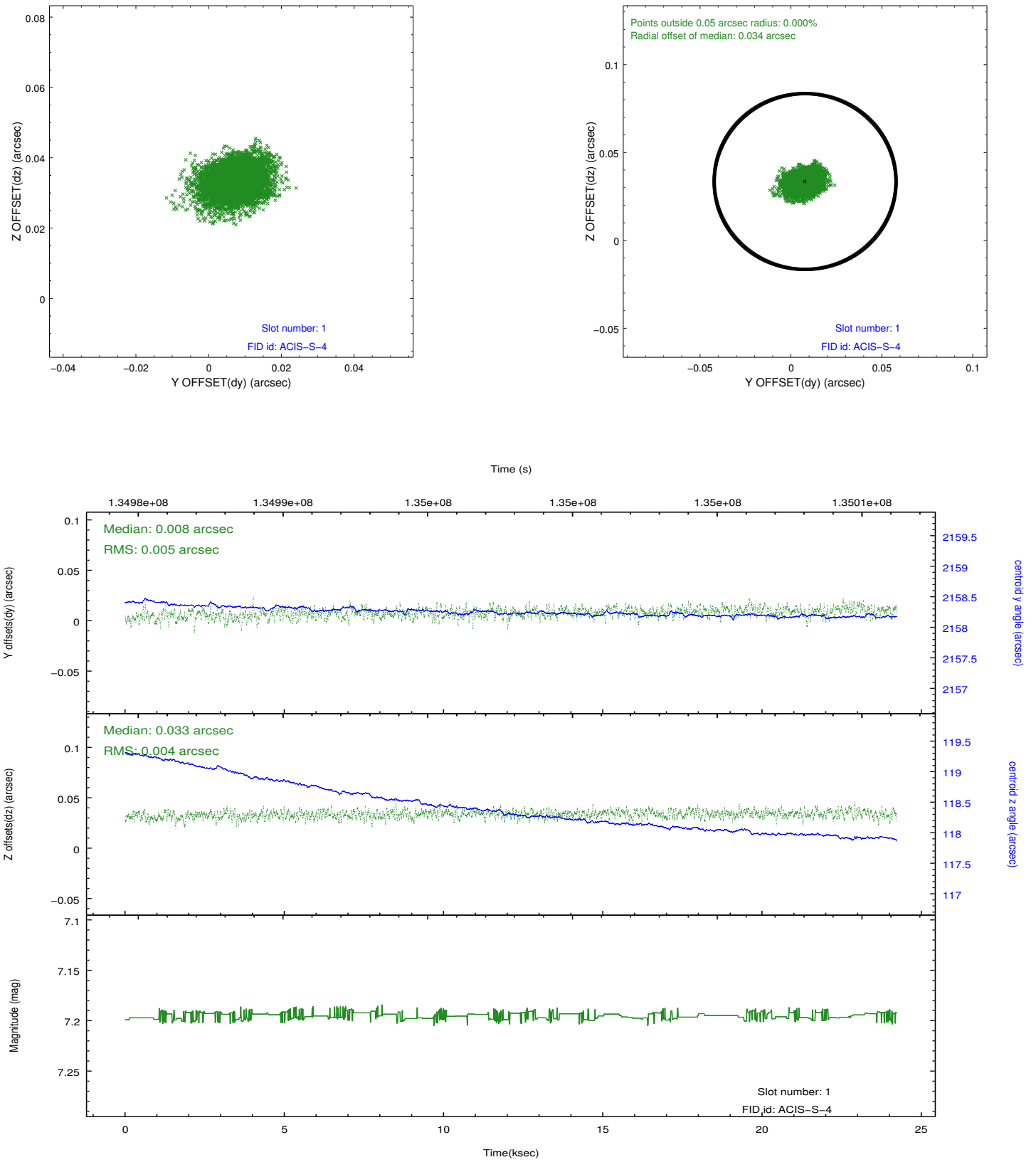


2.5 FID Slots

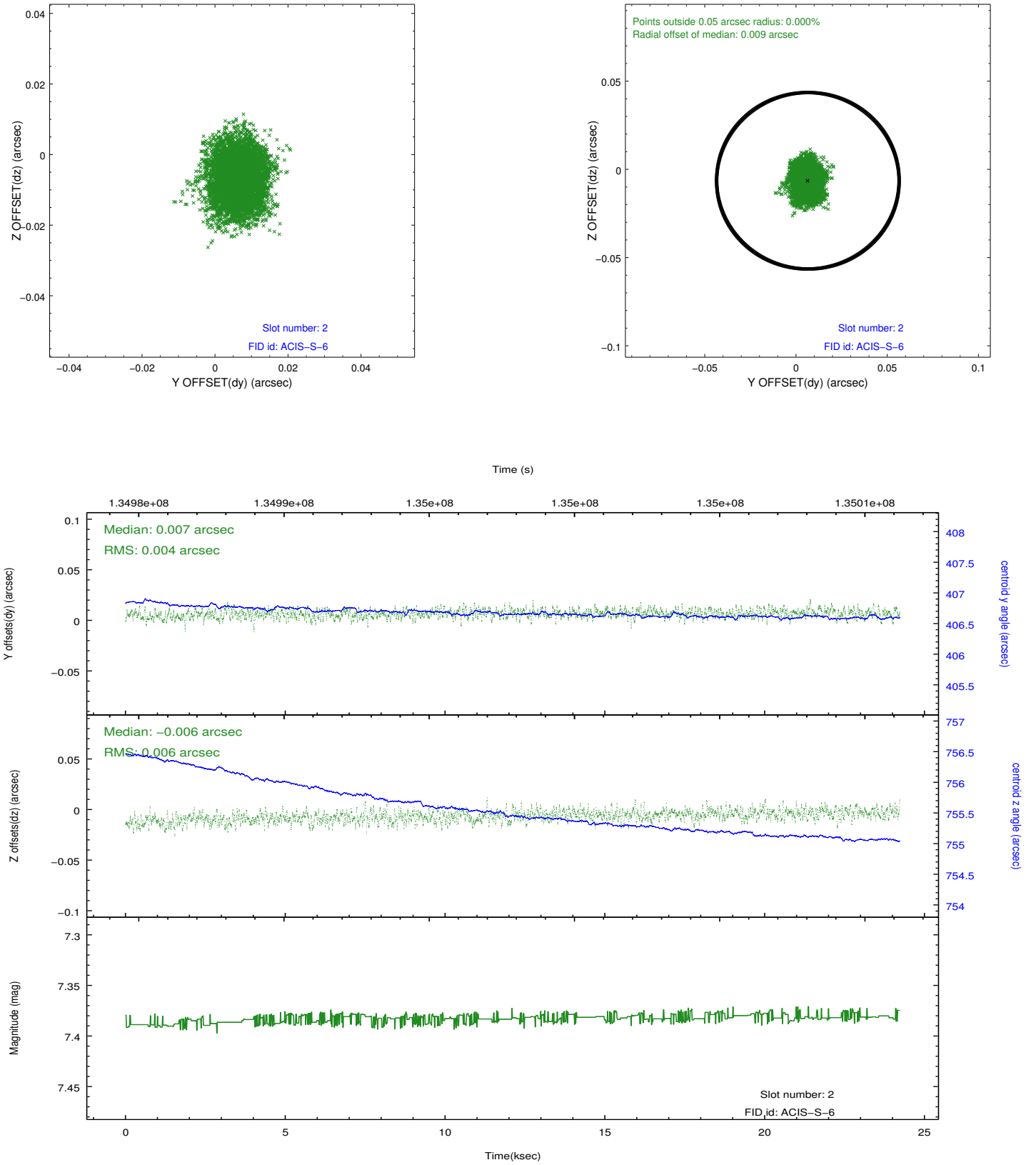
2.5.1 Slot 0



2.5.2 Slot 1



2.5.3 Slot 2

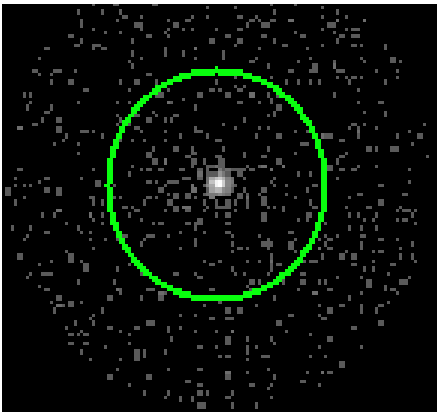


3 Gratings

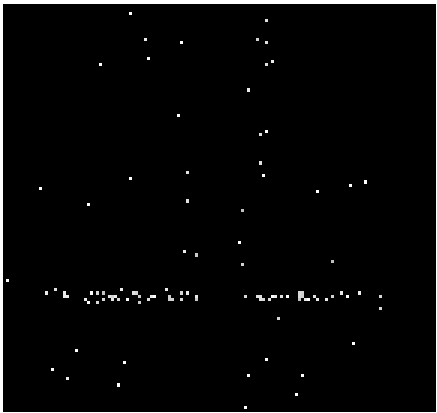
3.1 HEG Arm



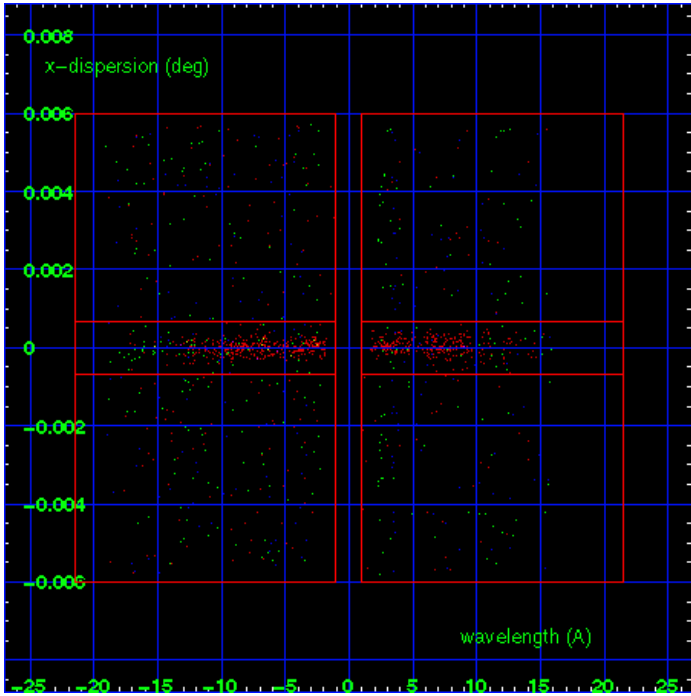
HEG Order Sort 123



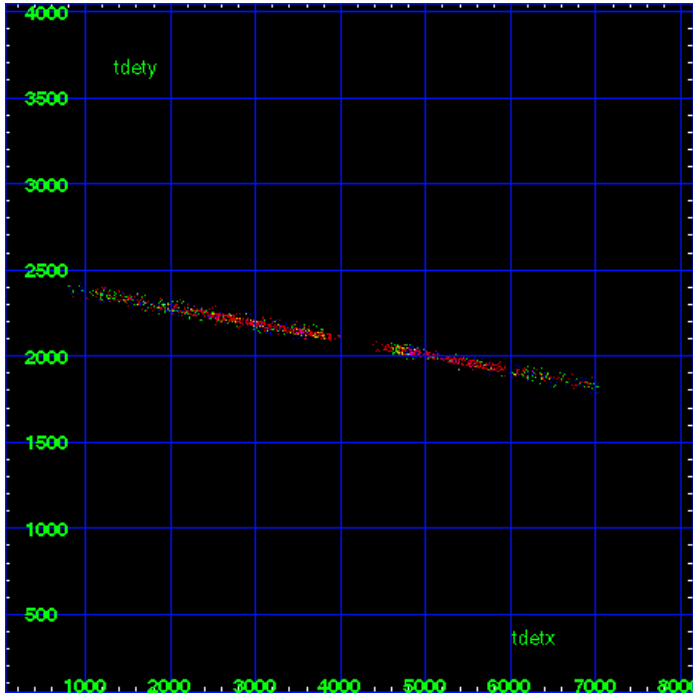
HEG Zero Order



HEG Order Sort ALL

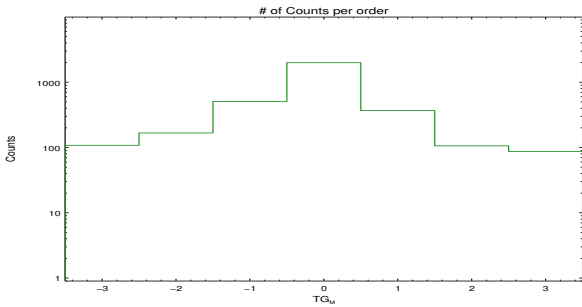


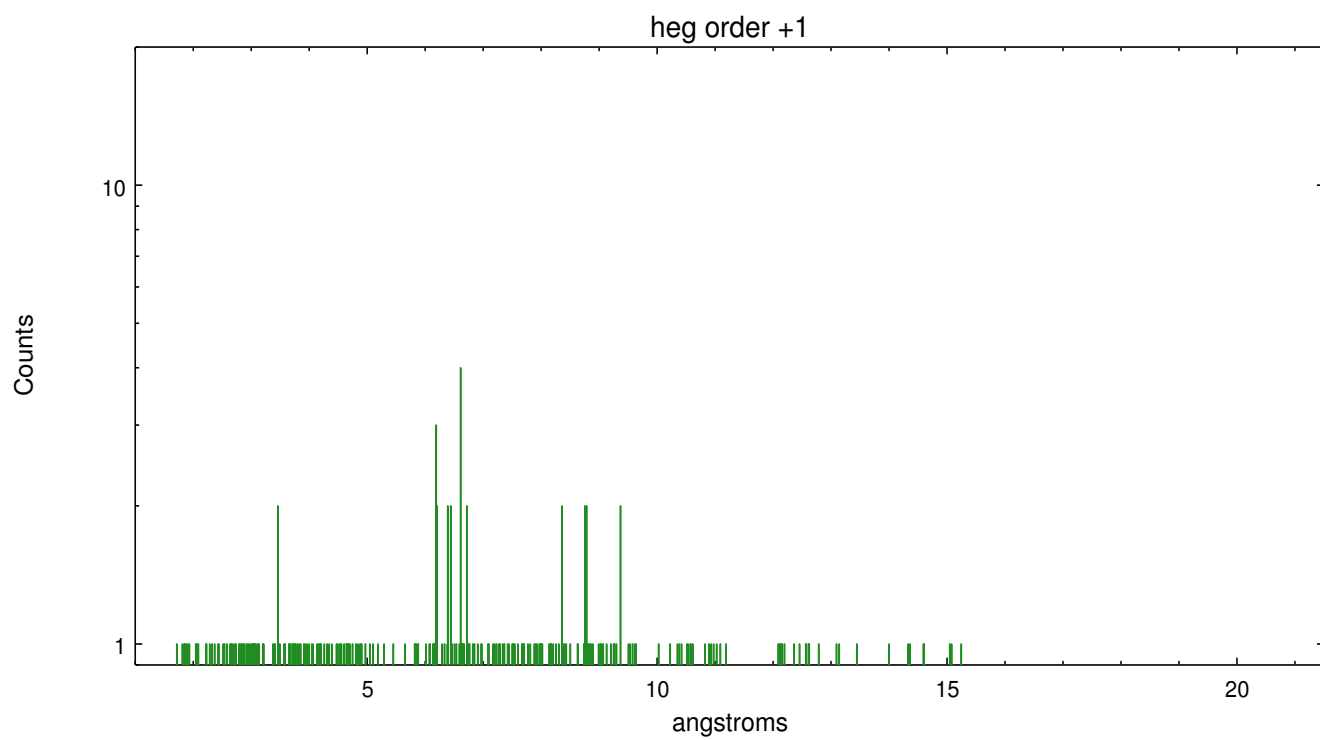
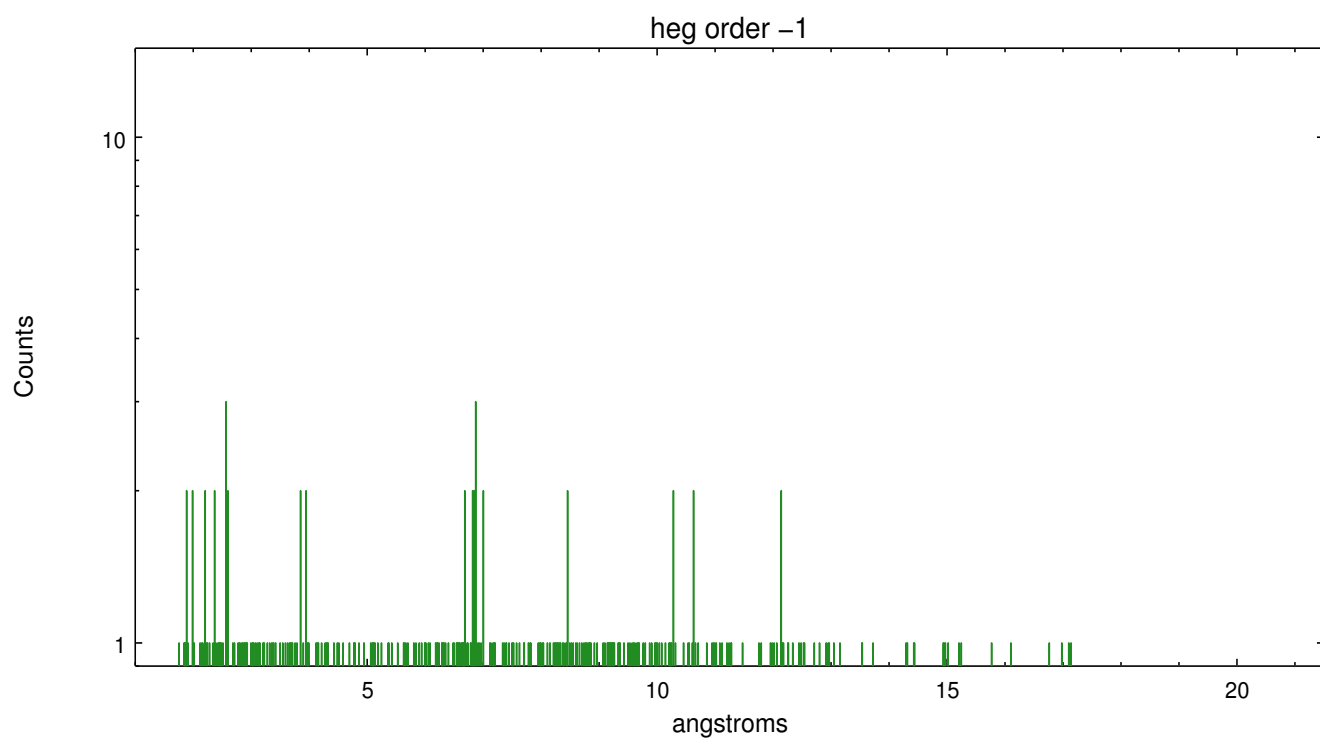
Spot Image HEG



Full Detector HEG

	order -3	order -2	order -1	order 0	order 1	order 2	order 3
Events	108	167	507	1993	368	106	87

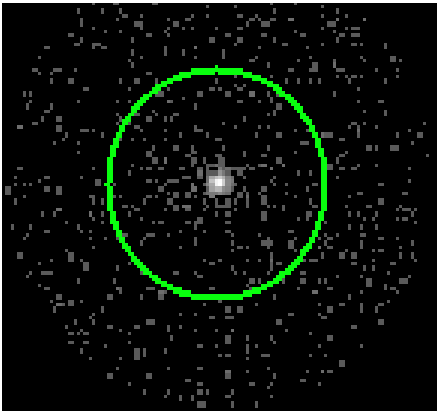




3.2 MEG Arm



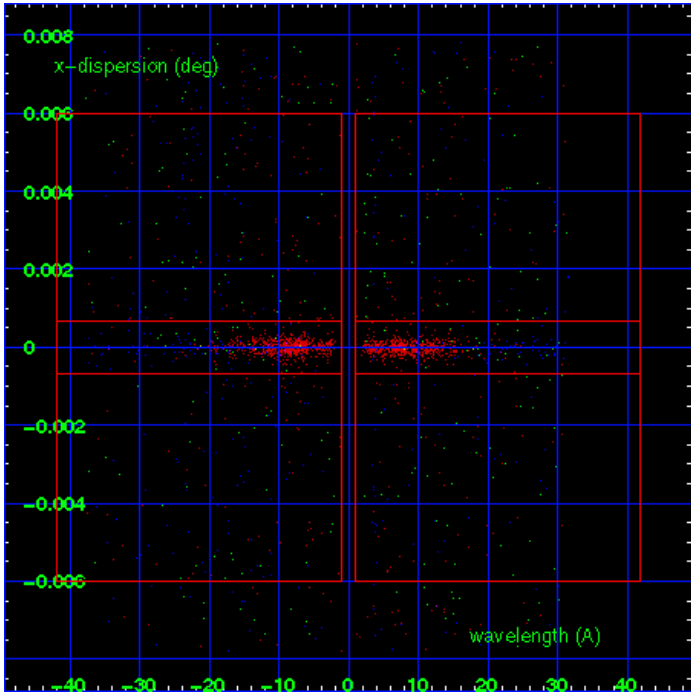
MEG Order Sort 123



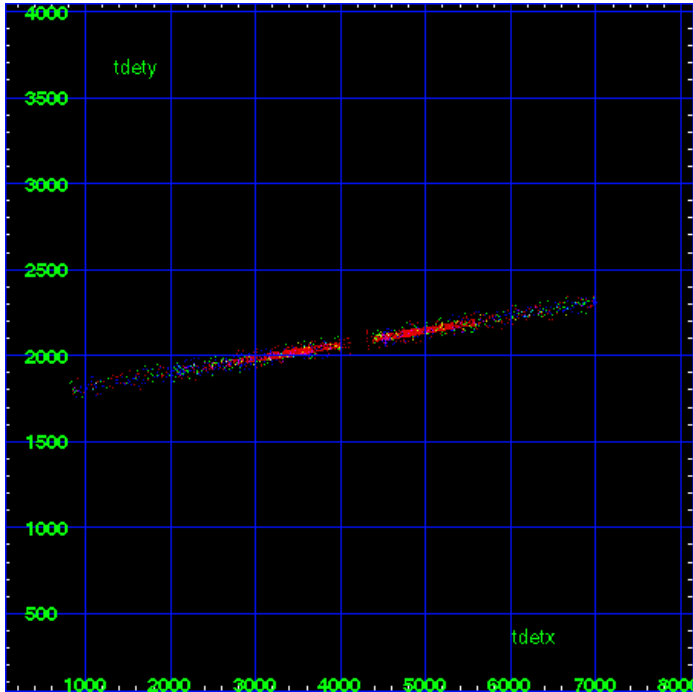
MEG Zero Order



MEG Order Sort ALL

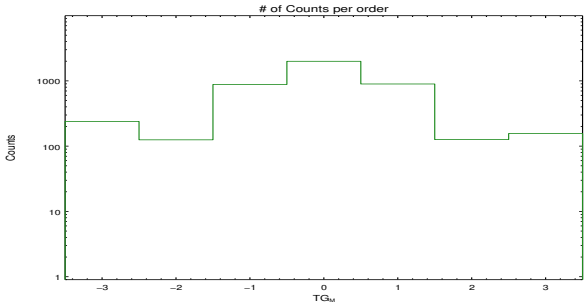


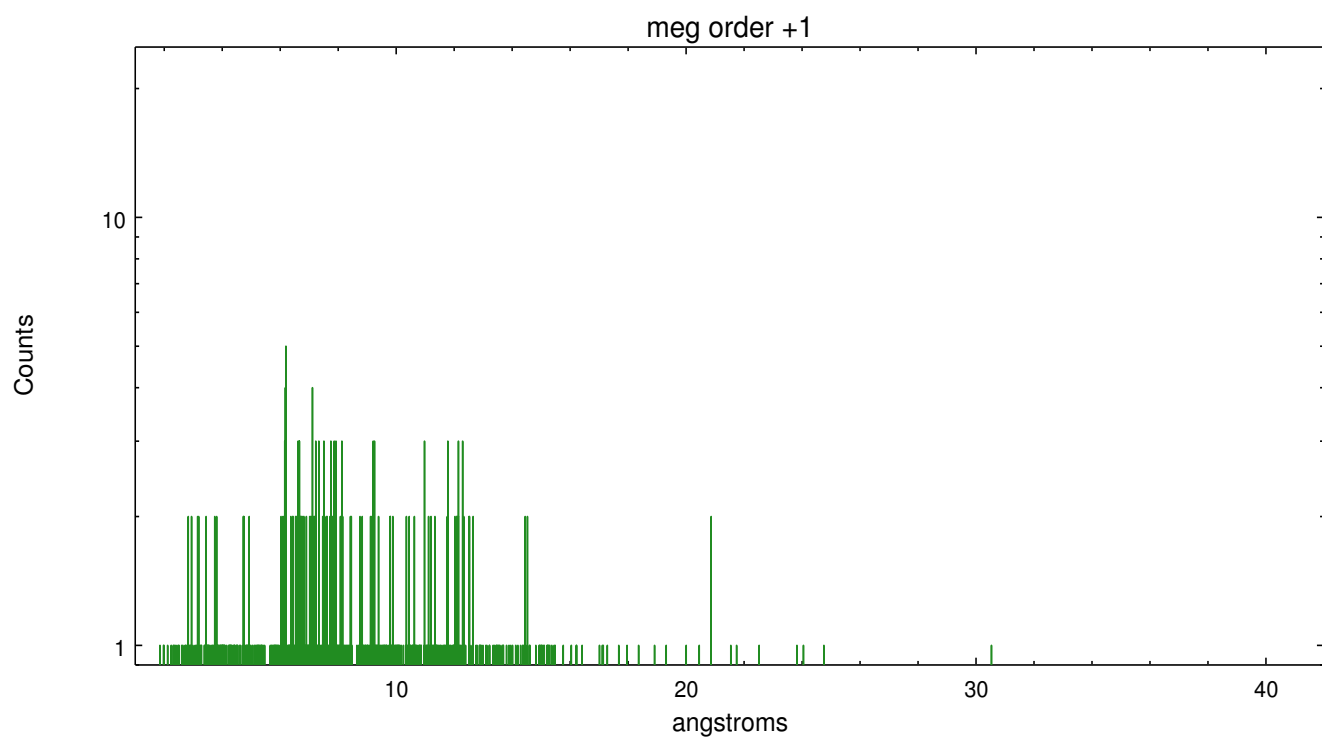
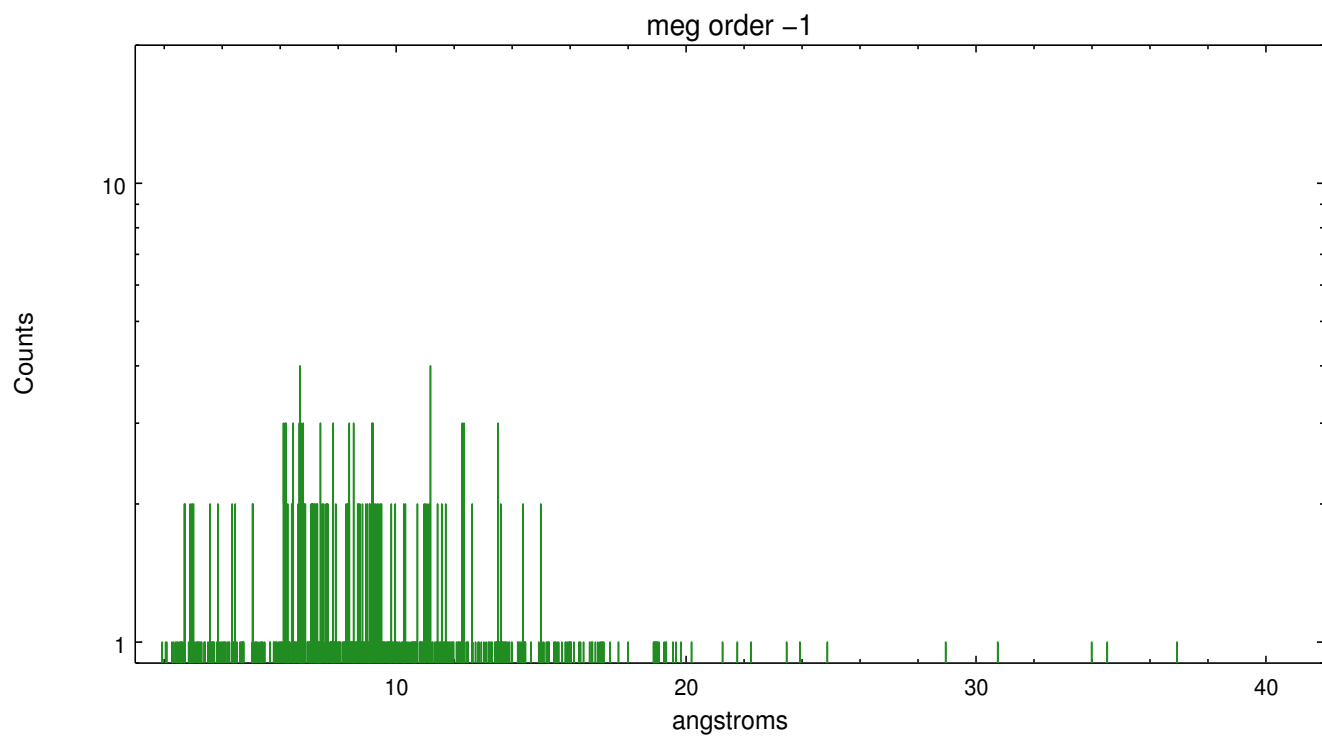
Spot Image MEG



Full Detector MEG

	order -3	order -2	order -1	order 0	order 1	order 2	order 3
Events	239	125	881	1993	896	126	156





A Summary

A.1 Status

V&V Scientist	Joy Nichols
V&V Date (YYYY-MM-DD)	2012.10.15
V&V Edition	1
V&V Disposition and Status	OK
V&V Charge Time	23.763

A.2 Comments