

# V&V Reference Report

## L2 ASCDS Version : 8.4.5

Observation 3198 - L2 Version 3  
Chandra X-Ray Center

L2 Processing Date : Sep 28 2012

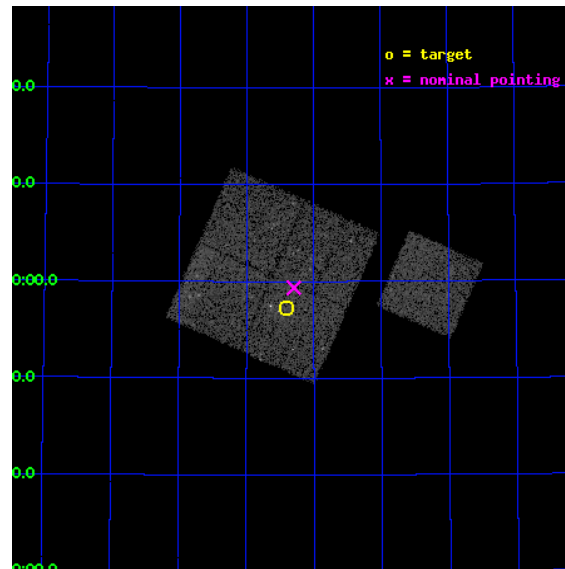
## Contents

<b>1</b>	<b>Front</b>	<b>2</b>
<b>2</b>	<b>OBI</b>	<b>3</b>
2.1	OBI . . . . .	3
2.1.1	Images . . . . .	3
2.1.2	Bias . . . . .	3
2.1.3	Parameters . . . . .	4
2.1.4	Events . . . . .	4
2.2	Compared Parameters . . . . .	5
2.3	Aspect . . . . .	6
2.4	Star Slots . . . . .	9
2.4.1	Slot 3 . . . . .	9
2.4.2	Slot 4 . . . . .	10
2.4.3	Slot 5 . . . . .	11
2.4.4	Slot 6 . . . . .	12
2.4.5	Slot 7 . . . . .	13
2.5	FID Slots . . . . .	14
2.5.1	Slot 0 . . . . .	14
2.5.2	Slot 1 . . . . .	15
2.5.3	Slot 2 . . . . .	16
<b>A</b>	<b>Summary</b>	<b>17</b>
A.1	Status . . . . .	17
A.2	Comments . . . . .	17



# 1 Front

seq_num	800198	Sequence number
obs_id	3198	Observation id
title	OBSERVATION OF MACS CLUSTERS, Z>0.5	Proposal title
observer	DR. LEON VANSPEYBROECK	Principal investigator
object	MACS-J0825.5+6157	Source name
dtcycle	0	&#160
cycle	P	events from which exps? Prim/Second/Both
ra_targ	126.352917	Observer's specified target RA [deg]
dec_targ	61.953889	Observer's specified target Dec [deg]
ra_nom	126.32423942849	Nominal RA [deg]
dec_nom	61.989125039423	Nominal Dec [deg]
roll_nom	113.91970826299	Nominal Roll [deg]
revision	3	Processing version of data
ontime	19195.199963093	Sum of GTIs [s]
livetime	18944.400544274	Livetime [s]
ontime0	19192.058962926	Sum of GTIs [s]
ontime1	19192.058992848	Sum of GTIs [s]
ontime2	19192.058992848	Sum of GTIs [s]
ontime3	19195.199963093	Sum of GTIs [s]
ontime6	19192.058992848	Sum of GTIs [s]
l2events	44078	Number of level 2 events

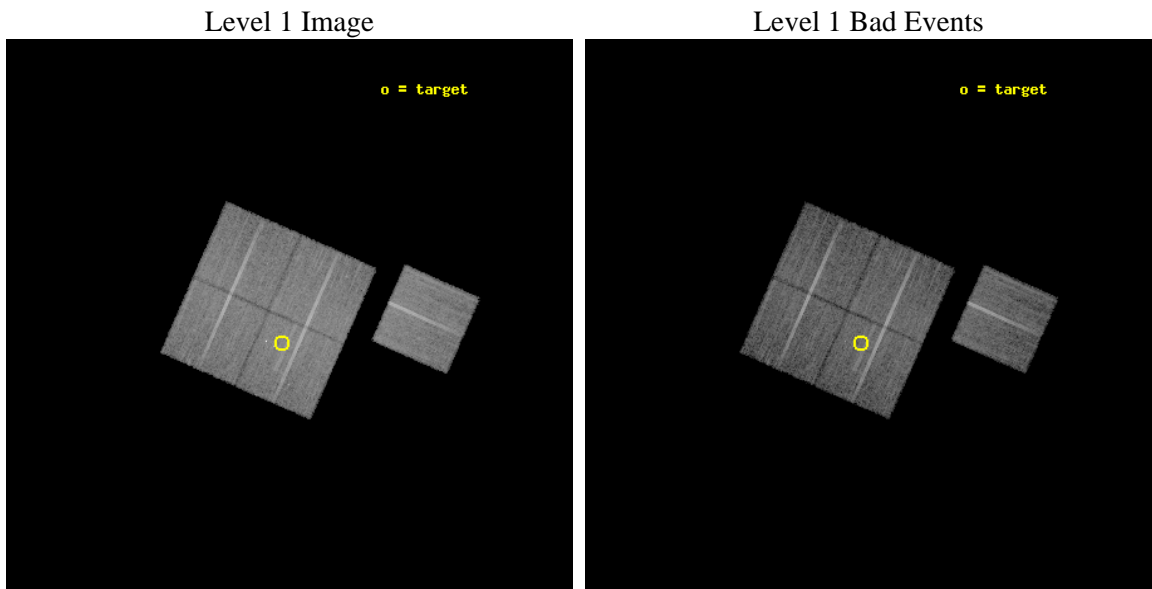




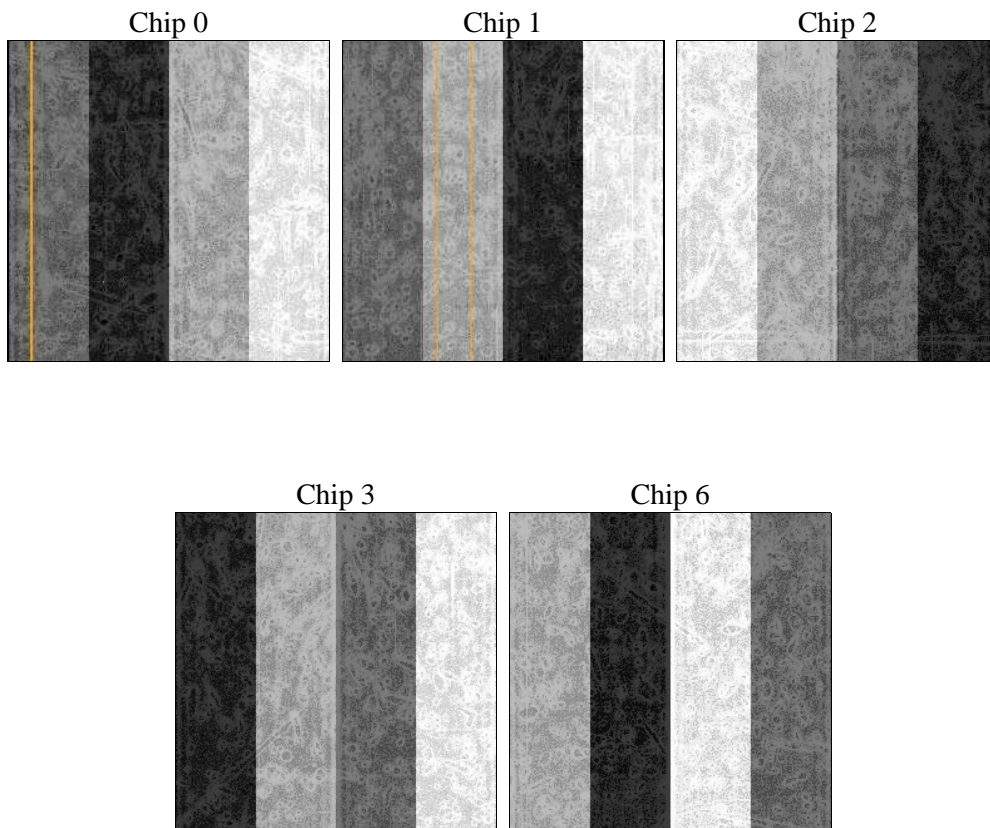
## 2 OBI

### 2.1 OBI

#### 2.1.1 Images



#### 2.1.2 Bias





### 2.1.3 Parameters

obi_num	1	Obi number	sched_exp_time	19000.000000	[s] Scheduled observation exposure time
ascdsver	8.4.5	Processing system revision	ontime	19195.199963093	Sum of GTIs [s]
caldbver	4.5.2	&#160	ontime0	19192.058962926	Sum of GTIs [s]
date	2012-09-28T23:44:27	Date and time of file creation	ontime1	19192.058992848	Sum of GTIs [s]
revision	3	Processing version of data	ontime2	19192.058992848	Sum of GTIs [s]
			ontime3	19195.199963093	Sum of GTIs [s]
			ontime6	19192.058992848	Sum of GTIs [s]
			l1events	548673	Number of level 1 events

### 2.1.4 Events

	ccd 0	ccd 1	ccd 2	ccd 3	ccd 6
level 1 events	101297	103040	116573	115239	112524
rejected events	91561	91722	106711	103354	102299
rejected %	90%	89%	91%	89%	90%

	ccd 0	ccd 1	ccd 2	ccd 3	ccd 6
grade 0 events	3723	4555	3876	5423	3897
	3%	4%	3%	4%	3%
grade 1 events	49	46	40	94	51
	0%	0%	0%	0%	0%
grade 2 events	2404	2550	2445	2517	2348
	2%	2%	2%	2%	2%
grade 3 events	1267	1397	1196	1302	1231
	1%	1%	1%	1%	1%
grade 4 events	1131	1397	1187	1245	1250
	1%	1%	1%	1%	1%
grade 5 events	3494	3892	3339	4062	4044
	3%	3%	2%	3%	3%
grade 6 events	2002	2404	1988	2190	2301
	1%	2%	1%	1%	2%
grade 7 events	87227	86799	102502	98406	97402
	86%	84%	87%	85%	86%

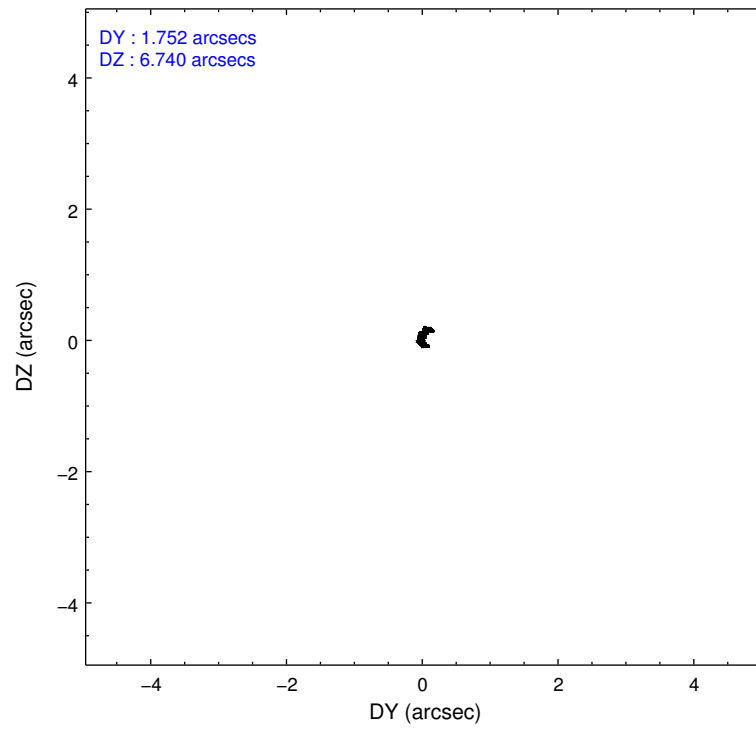
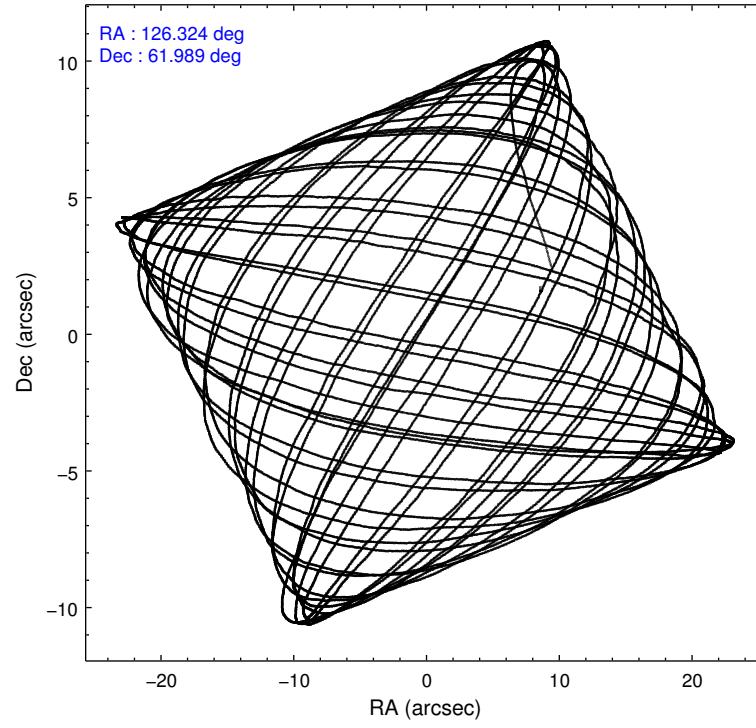


## 2.2 Compared Parameters

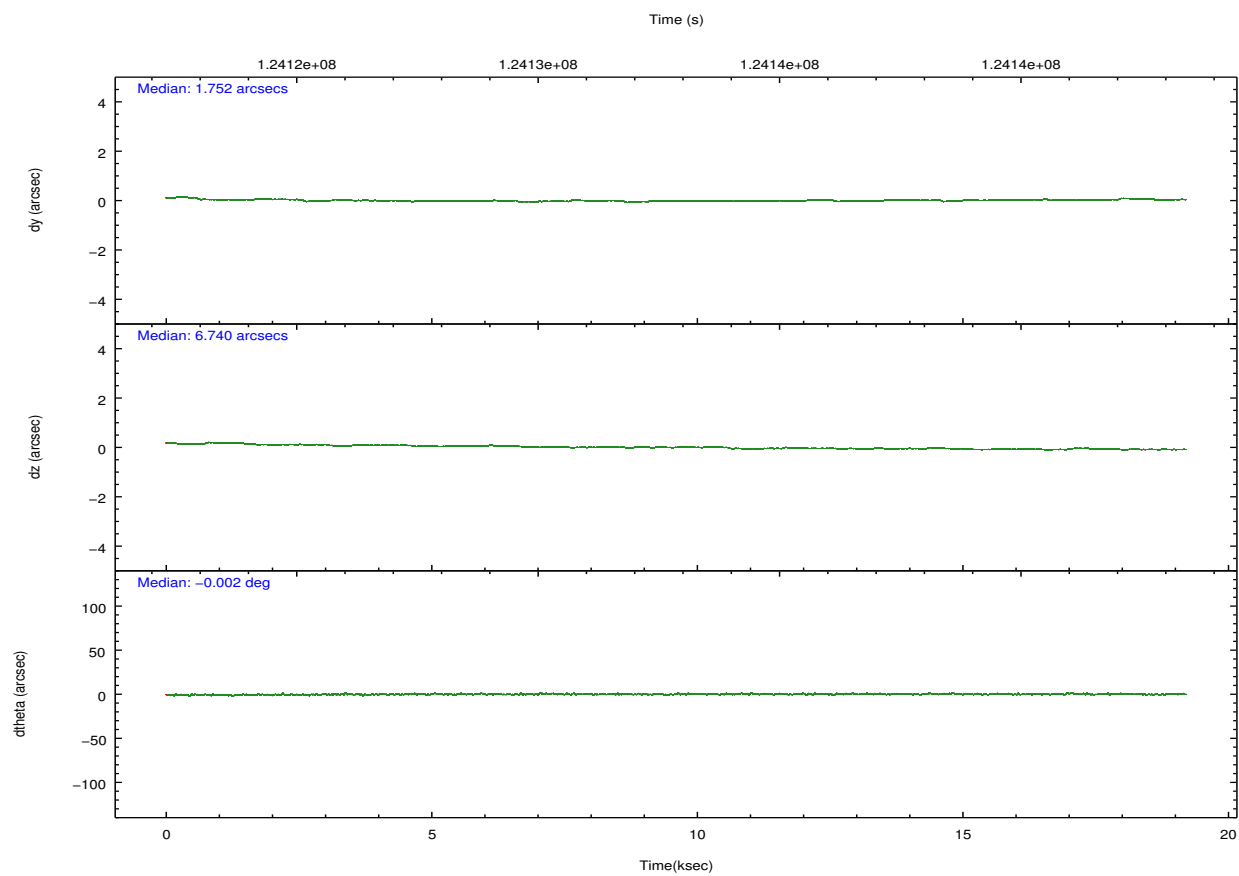
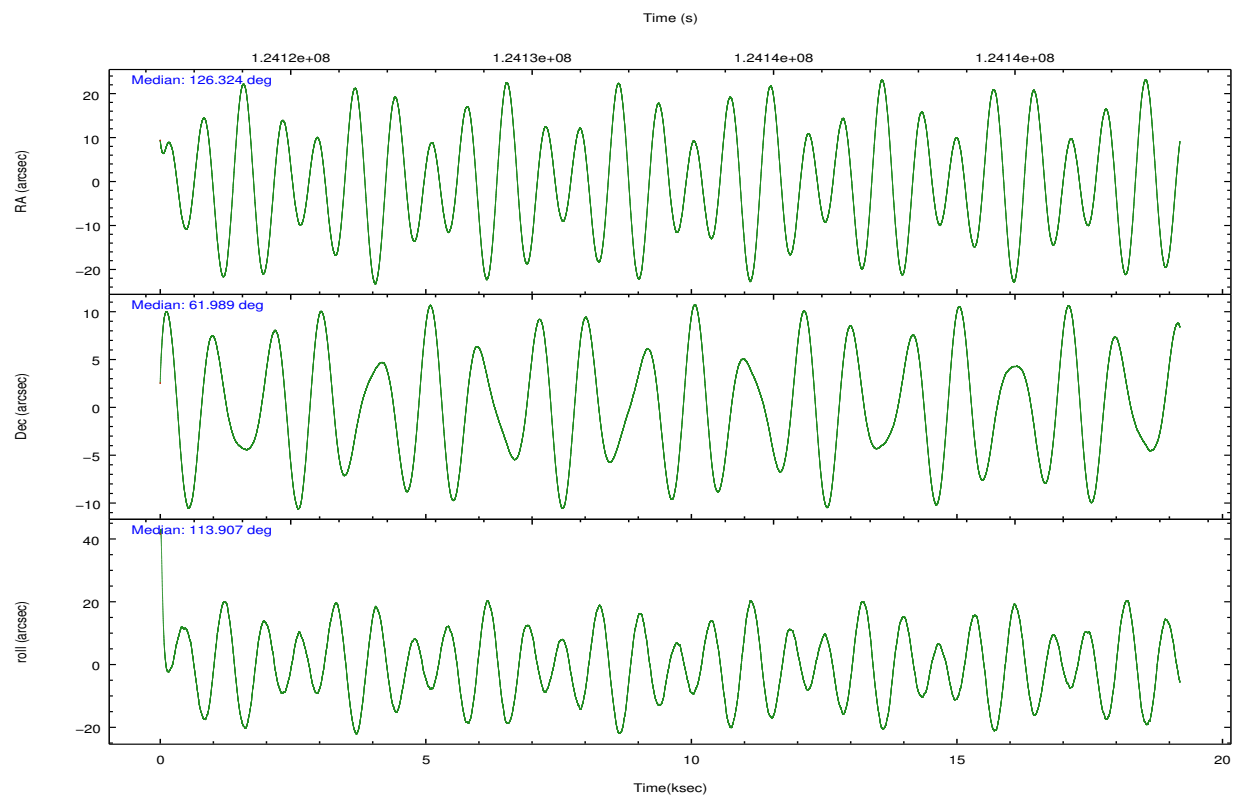
Parameter	Planned	Actual	Parameter	Planned	Actual
Instrument	ACIS	ACIS	Obspar format version number	7	7
Detector	ACIS-01236	ACIS-01236	Obspar file type	PREDICTED	ACTUAL
Grating	NONE	NONE	Obspar update status	NONE	UPDATED
Data mode	VFAINT	VFAINT	Number of optional ACIS chips dropped	0	0
Observation mode	POINTING	POINTING	On-chip summing requested	N	N
[deg] Pointing RA	126.371478	126.3242394284865	Subarray requested	NONE	NONE
[deg] Pointing Dec	61.973004	61.98912503942312	Alternating exposures requested	N	N
[deg] Pointing Roll	113.669292	113.9197082629865	[s] Primary exposure time	0.000000	3.1
[mm] SIM focus pos	-0.782348	-0.7809083437167272			
[mm] SIM defocus	0	0.001439871863259334			
[mm] SIM translation stage pos	-227.742463	-227.734108438797			
[mm] SIM translation stage offset	-5.85	-5.858344564132665			
[s] Observation start time (MET)	124123455.184000	124121670.12733			
Observation start date	2001-12-07T14:43:11	2001-12-07T14:14:30			
[s] Observation end time (MET)	124142455.184000	124143348.36569			
Observation end date	2001-12-07T19:59:51	2001-12-07T20:15:48			
Read mode	TIMED	TIMED			



## 2.3 Aspect









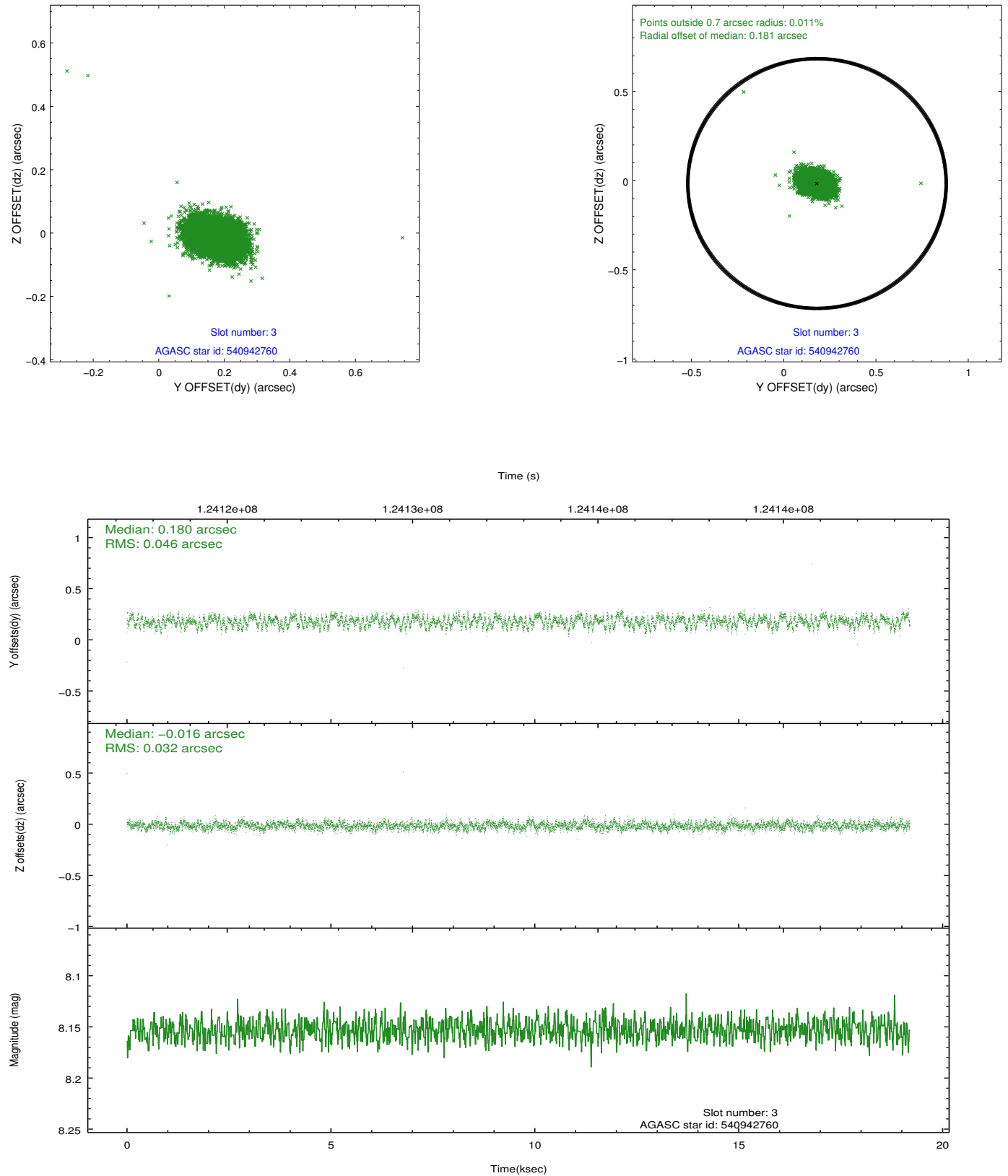
### Slot Statistics

slot	status	id	mag	n_pts	med_dy	med_dz	dr1	dr2	ra	dec	mean_y	mean_z
0	FID	ACIS-I-3	7.43	4682	-0.001	0.194	0.007	0.011	0.000000	0.000000	55.37	-1083.41
1	FID	ACIS-I-5	7.24	4683	-0.098	0.014	0.007	0.012	0.000000	0.000000	-1810.32	946.98
2	FID	ACIS-I-6	7.25	4684	0.007	-0.139	0.007	0.011	0.000000	0.000000	403.30	1591.58
3	GUIDE	540942760	8.15	9365	0.180	-0.016	0.058	0.093	125.817553	61.460445	-1302.87	1610.89
4	GUIDE	540809488	8.54	9366	0.059	-0.227	0.072	0.111	125.194165	61.682156	-134.66	2253.71
5	GUIDE	540934440	9.08	9359	0.117	0.157	0.073	0.120	126.658856	62.199965	556.99	-770.24
6	GUIDE	540934536	9.53	9358	-0.078	0.245	0.139	0.228	127.439873	62.272556	284.36	-2078.09
7	GUIDE	540806944	8.44	9365	-0.278	-0.166	0.071	0.112	124.808645	62.197633	1823.48	2065.37



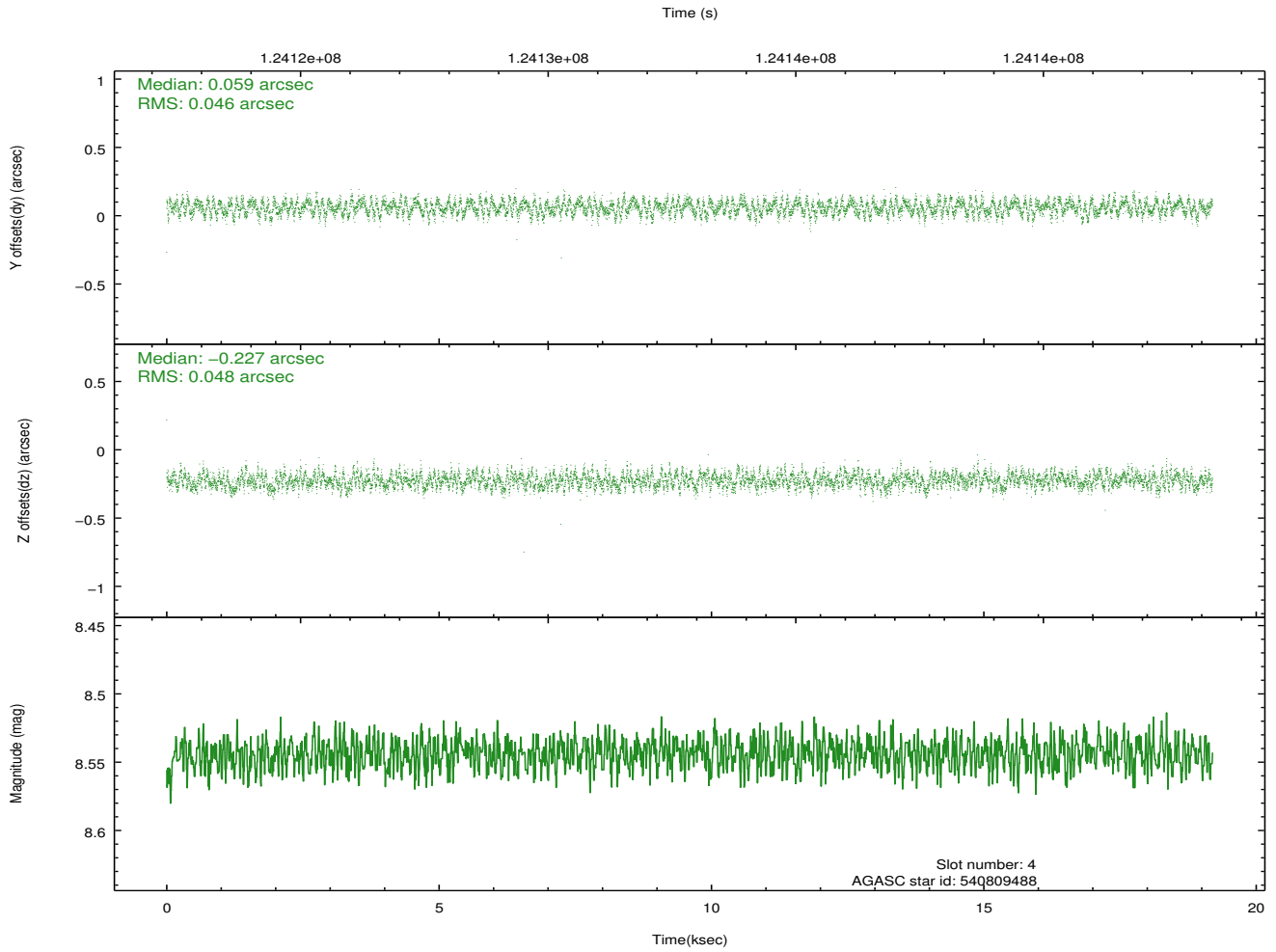
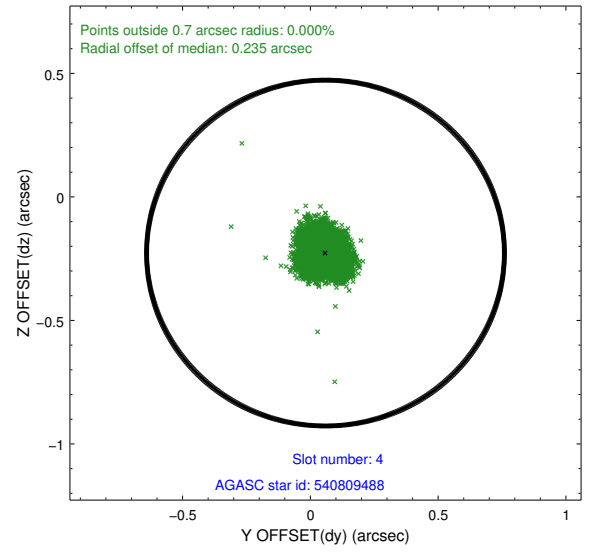
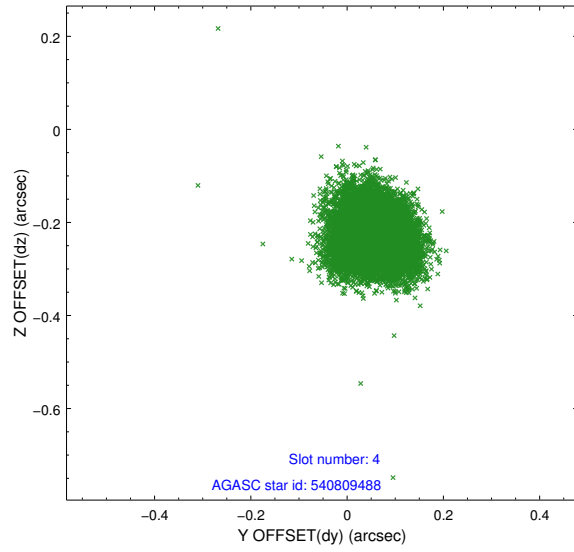
## 2.4 Star Slots

### 2.4.1 Slot 3



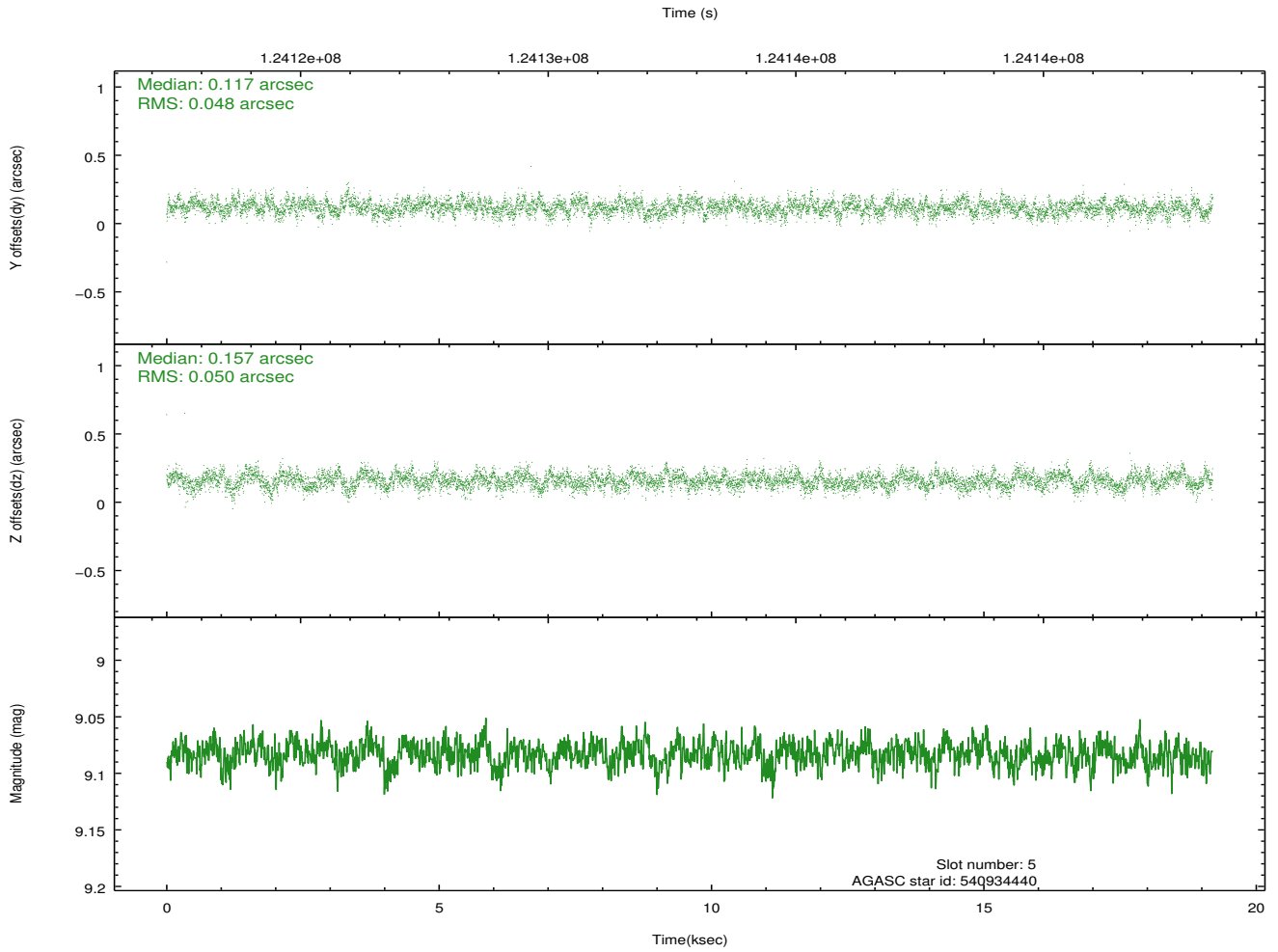
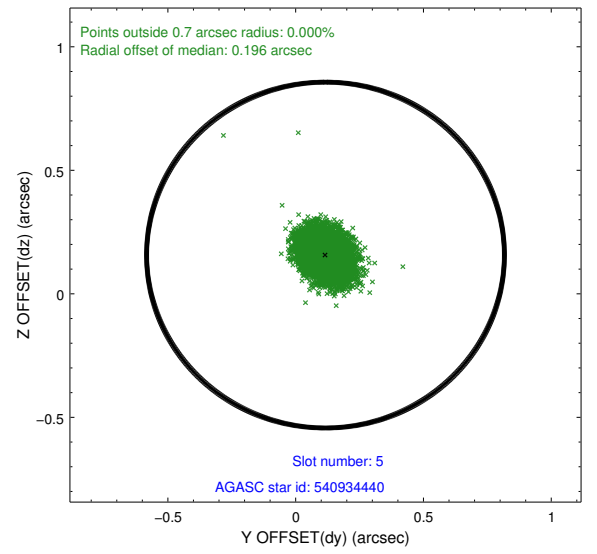
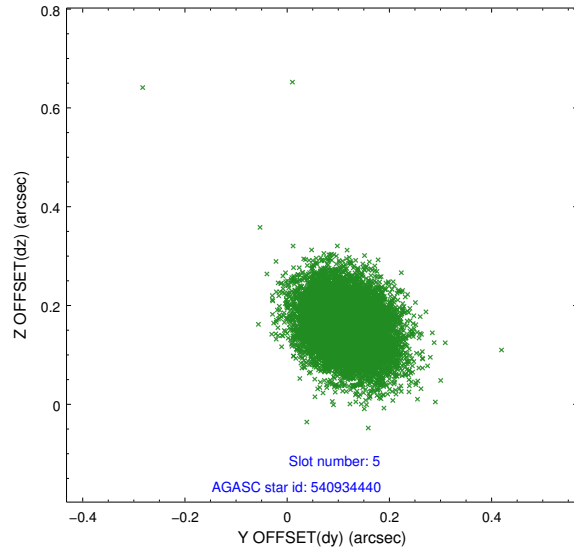


## 2.4.2 Slot 4



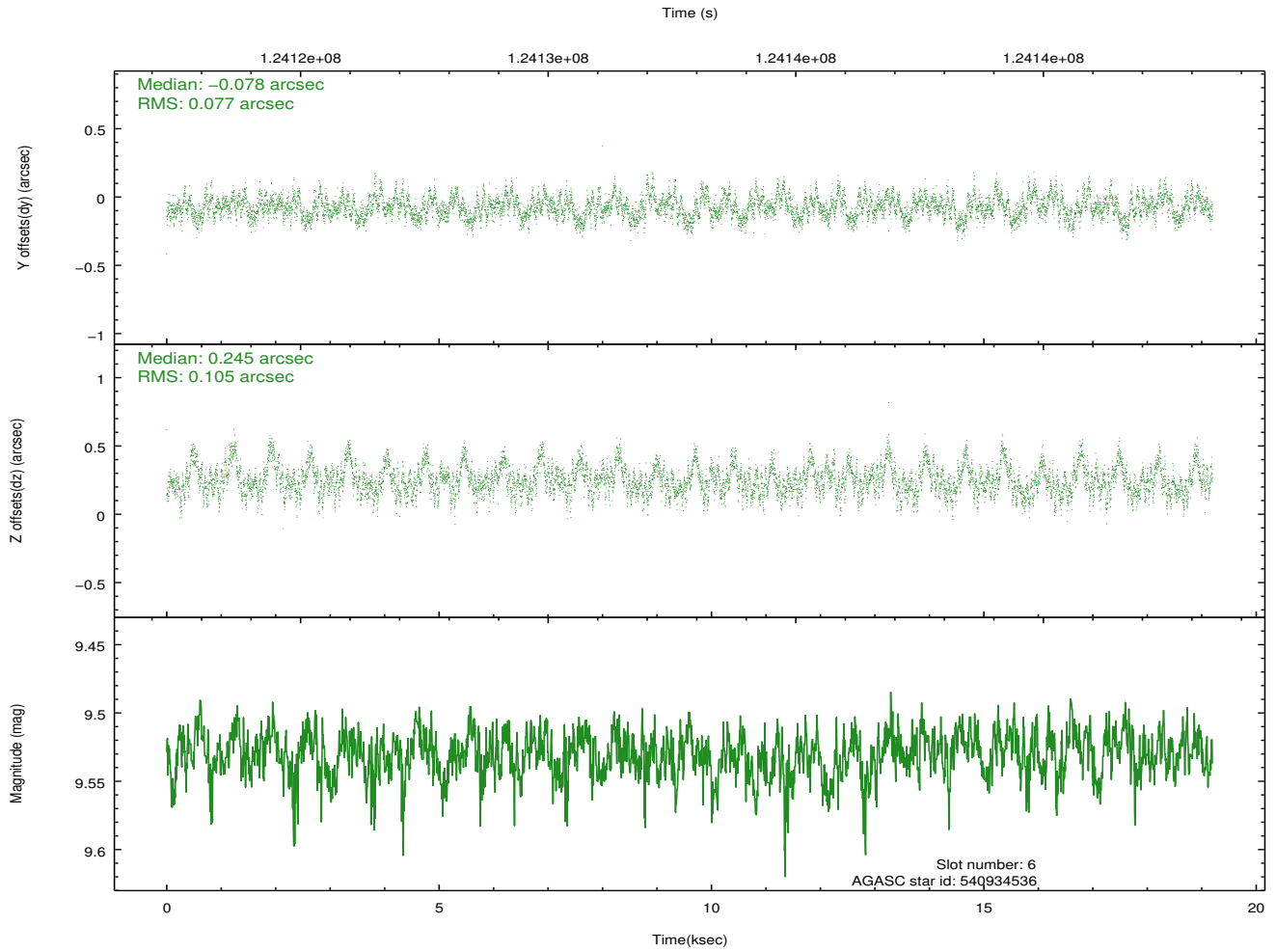
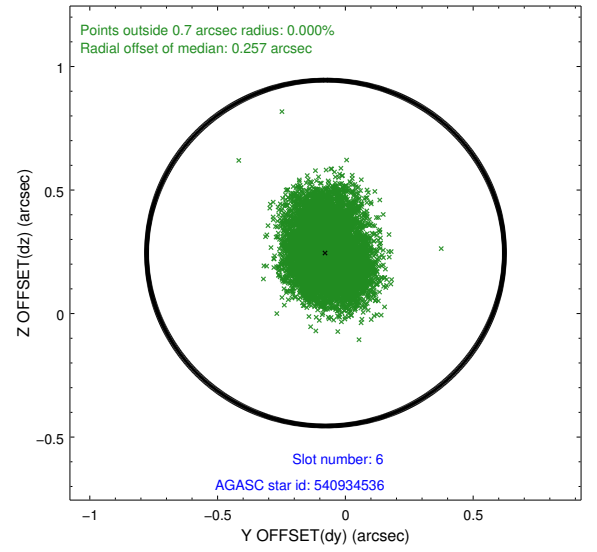
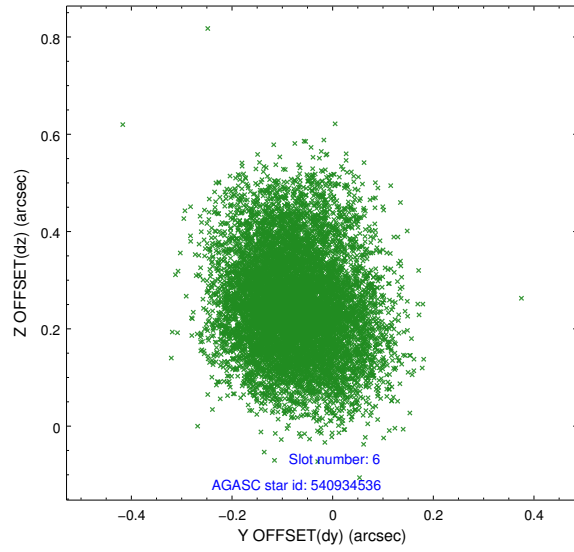


### 2.4.3 Slot 5



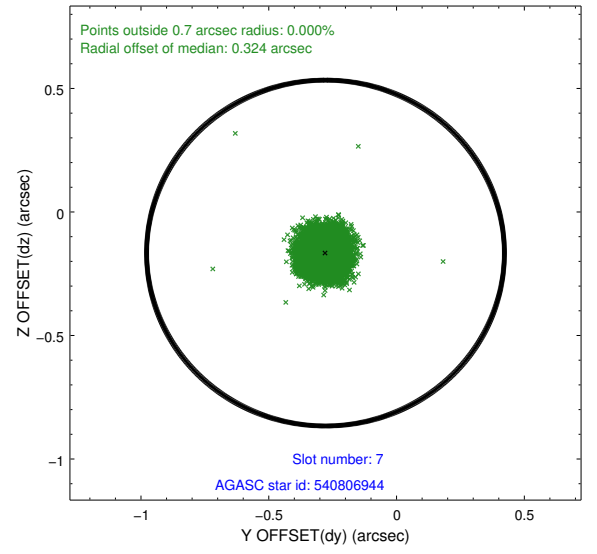
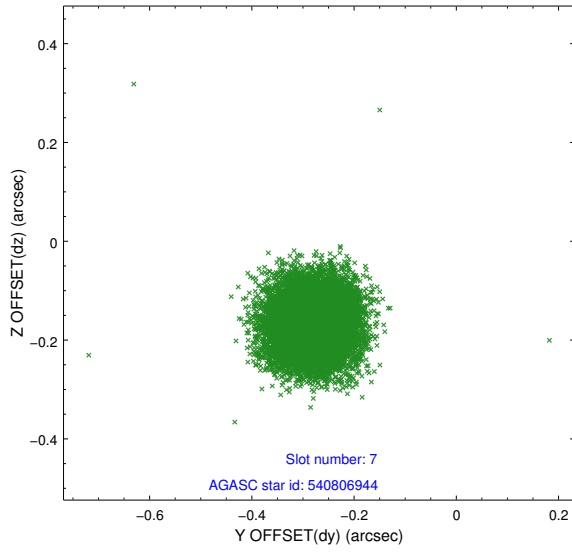


## 2.4.4 Slot 6

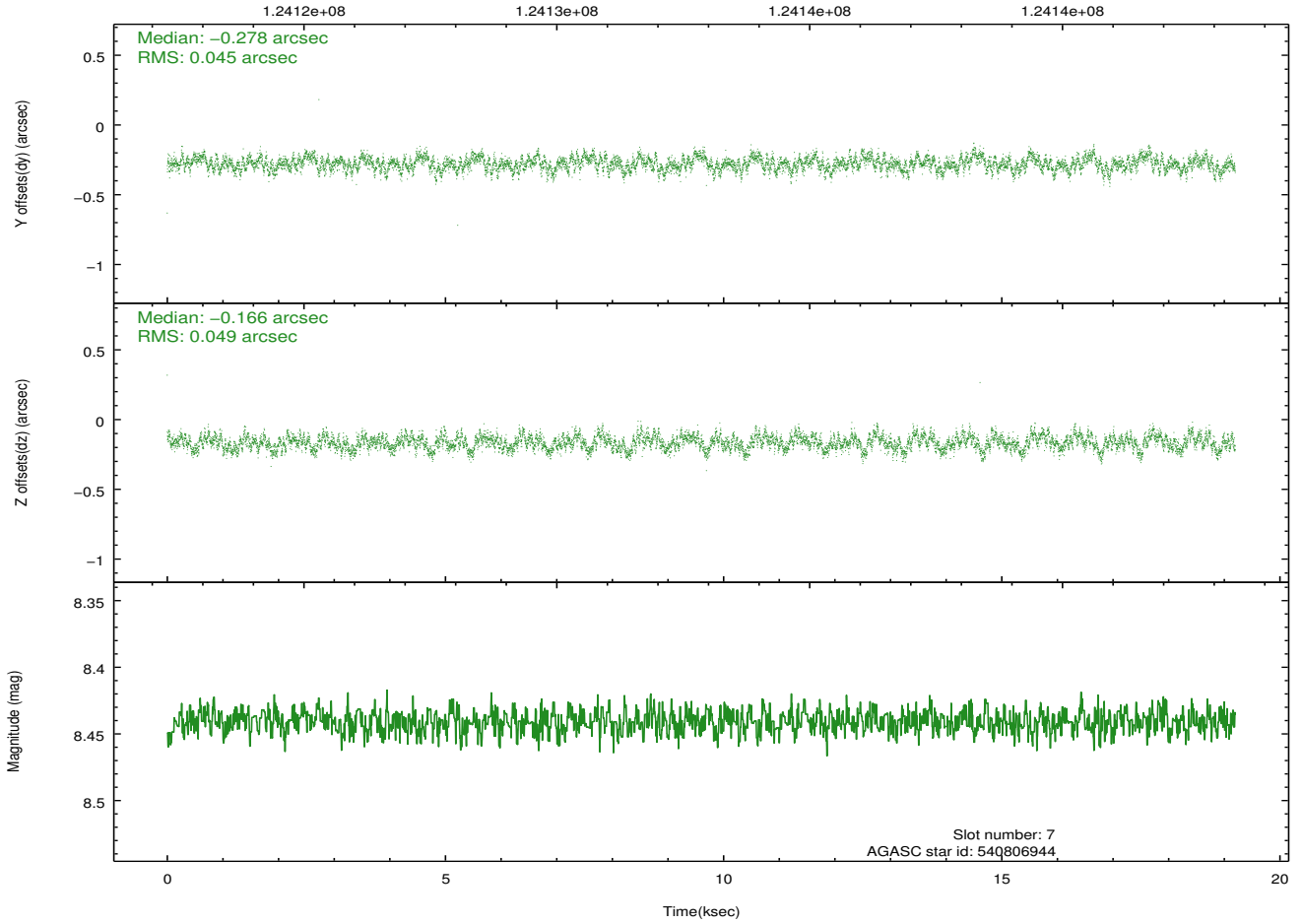




## 2.4.5 Slot 7



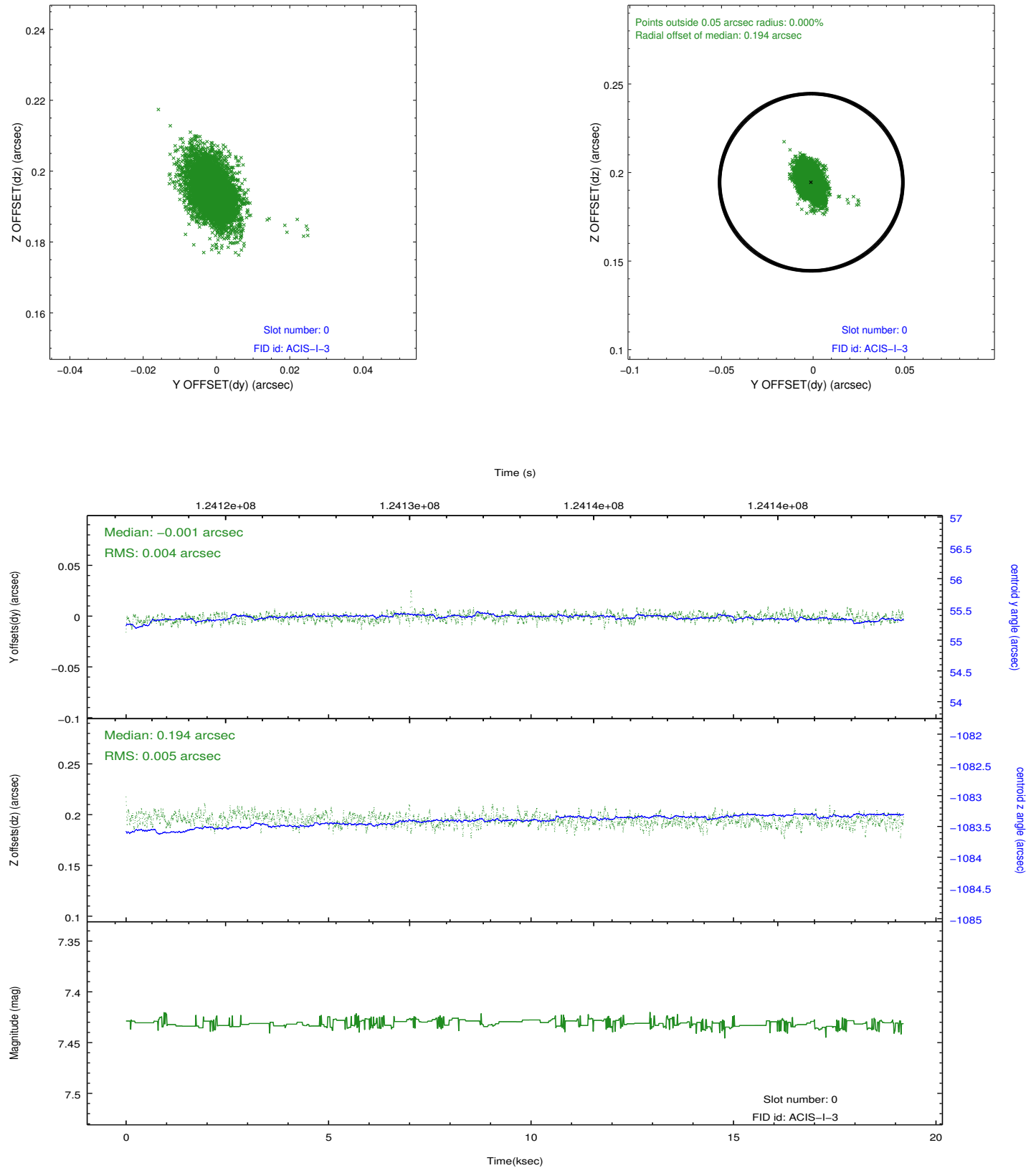
Time (s)





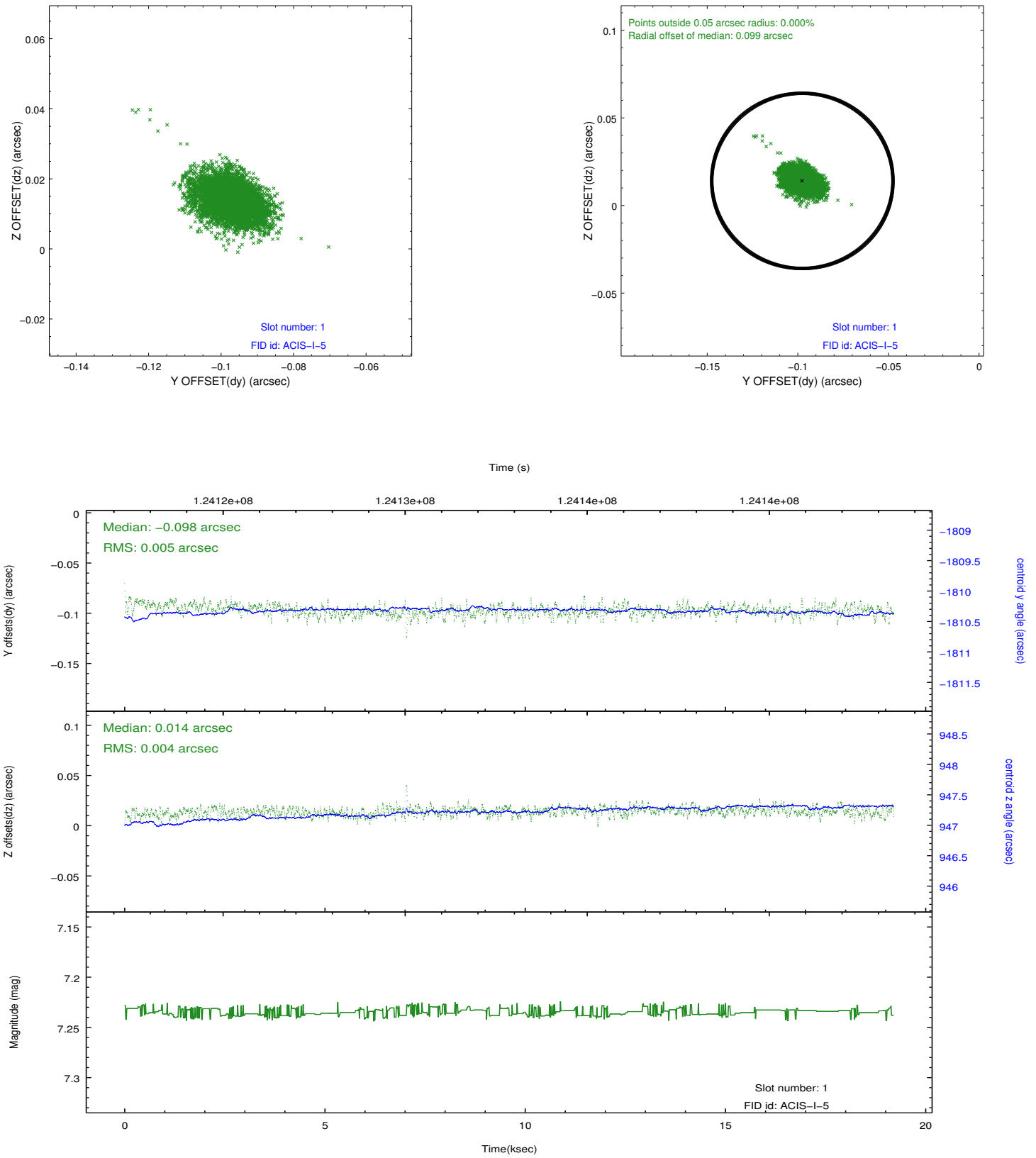
## 2.5 FID Slots

### 2.5.1 Slot 0



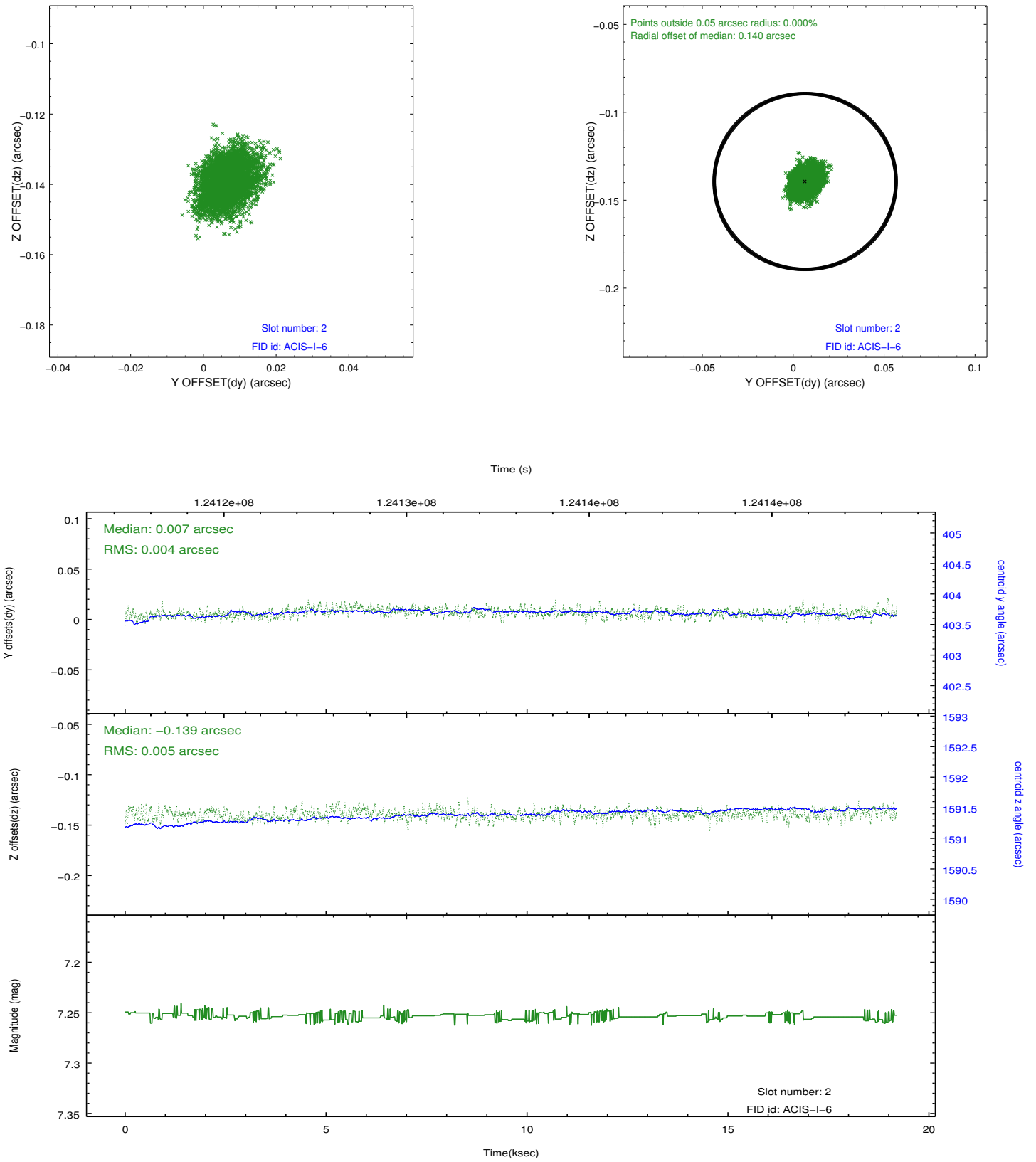


## 2.5.2 Slot 1





### 2.5.3 Slot 2





## A Summary

### A.1 Status

V&V Scientist	Jen Lauer
V&V Date (YYYY-MM-DD)	2012.09.30
V&V Edition	1
V&V Disposition and Status	OK
V&V Charge Time	19.195

### A.2 Comments