

# V&V Reference Report

## L2 ASCDS Version : 7.6.10

Observation 3128 - L2 Version 001  
Chandra X-Ray Center

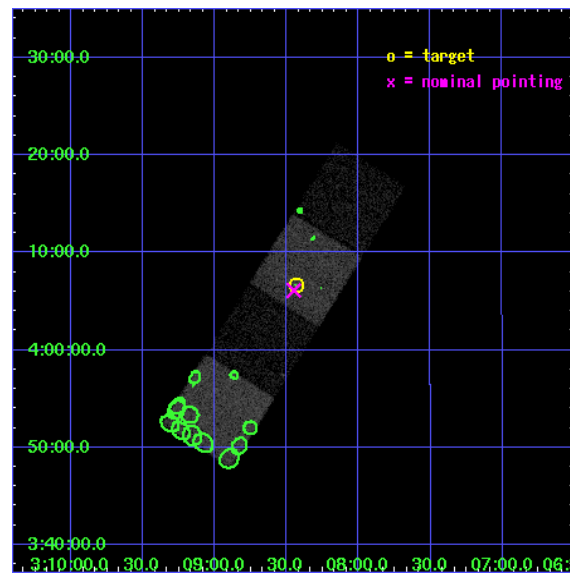
L2 Processing Date : Jan 18 2007

## Contents

<b>1</b>	<b>Front</b>	<b>2</b>
<b>2</b>	<b>OBI</b>	<b>3</b>
2.1	OBI . . . . .	3
2.1.1	Images . . . . .	3
2.1.2	Bias . . . . .	3
2.1.3	Parameters . . . . .	4
2.1.4	Events . . . . .	4
2.2	Compared Parameters . . . . .	5
2.3	Aspect . . . . .	6
2.4	Star Slots . . . . .	9
2.4.1	Slot 3 . . . . .	9
2.4.2	Slot 4 . . . . .	10
2.4.3	Slot 5 . . . . .	11
2.4.4	Slot 6 . . . . .	12
2.4.5	Slot 7 . . . . .	13
2.5	FID Slots . . . . .	14
2.5.1	Slot 0 . . . . .	14
2.5.2	Slot 1 . . . . .	15
2.5.3	Slot 2 . . . . .	16
<b>3</b>	<b>Point Sources</b>	<b>17</b>
<b>A</b>	<b>Summary</b>	<b>18</b>
A.1	Status . . . . .	18
A.2	Comments . . . . .	18

# 1 Front

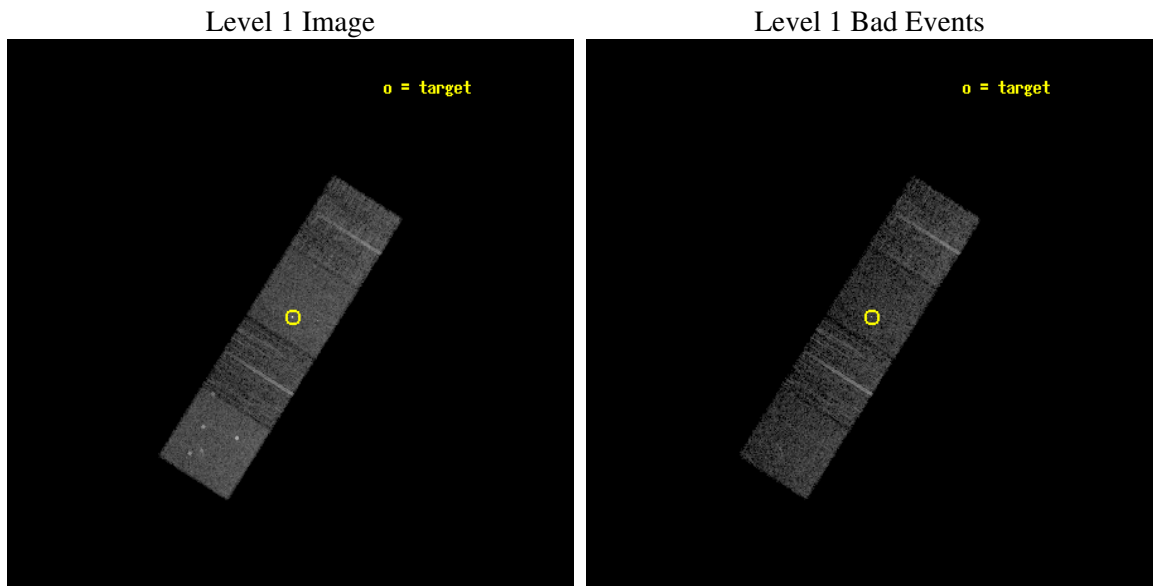
seq_num	700567
obs_id	3128
title	3C 346, 3C 78, AND THE X-RAY EMISSION MECHANISM FROM OPTICAL JETS
observer	Prof Mark Birkinshaw
object	3C78
dtcycle	0
cycle	P
ra_targ	47.109167
dec_targ	4.110917
ra_nom	47.112868321418
dec_nom	4.1018256774745
roll_nom	302.19694322638
revision	2
ontime	5232.7999899387
livetime	5164.4296057389
ontime5	5232.7999899387
ontime6	5229.6590096802
ontime7	5232.7999899387
ontime8	5232.7999899387
l2events	48573



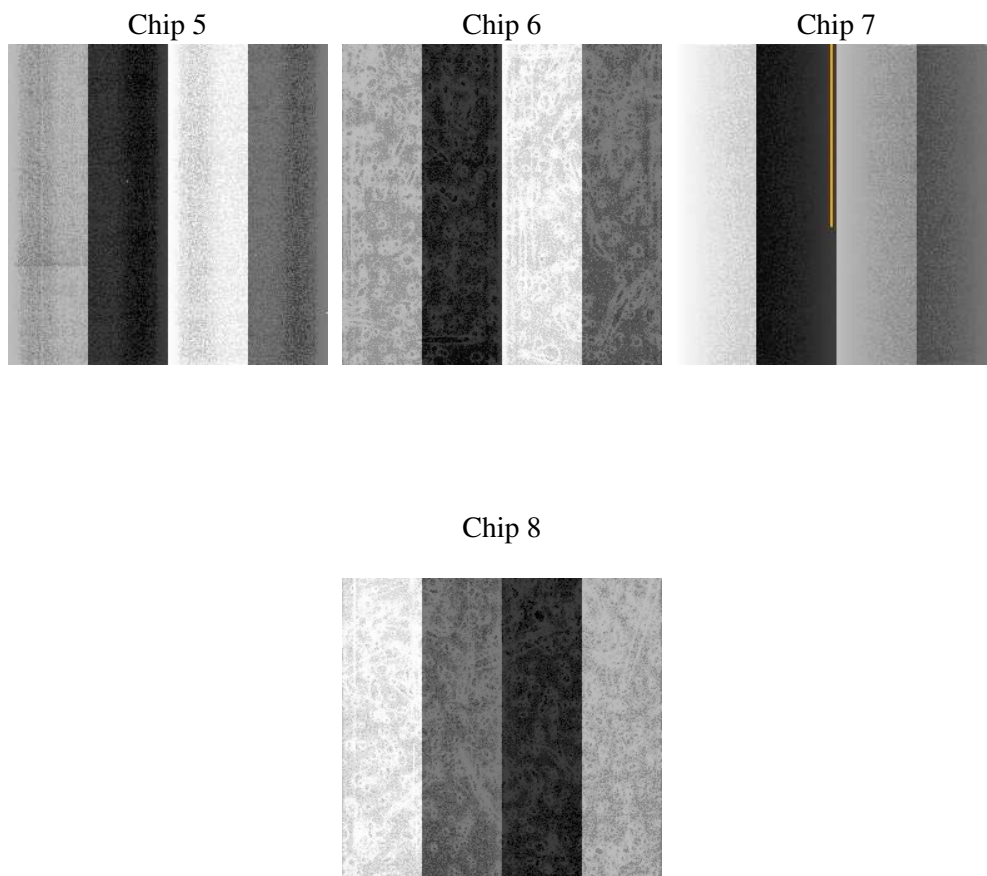
## 2 OBI

### 2.1 OBI

#### 2.1.1 Images



#### 2.1.2 Bias



### 2.1.3 Parameters

obi_num	0
ascdsver	7.6.10
caldbver	3.3.0
date	2007-01-18T04:55:14
revision	2

sched_exp_time	5000.000000
ontime	5232.7999899387
ontime5	5232.7999899387
ontime6	5229.6590096802
ontime7	5232.7999899387
ontime8	5232.7999899387
l1events	178127

### 2.1.4 Events

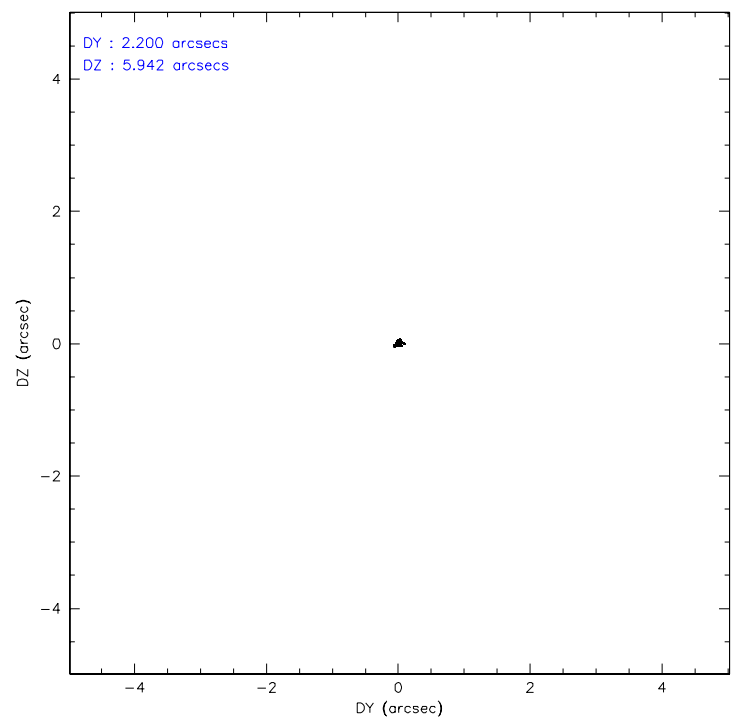
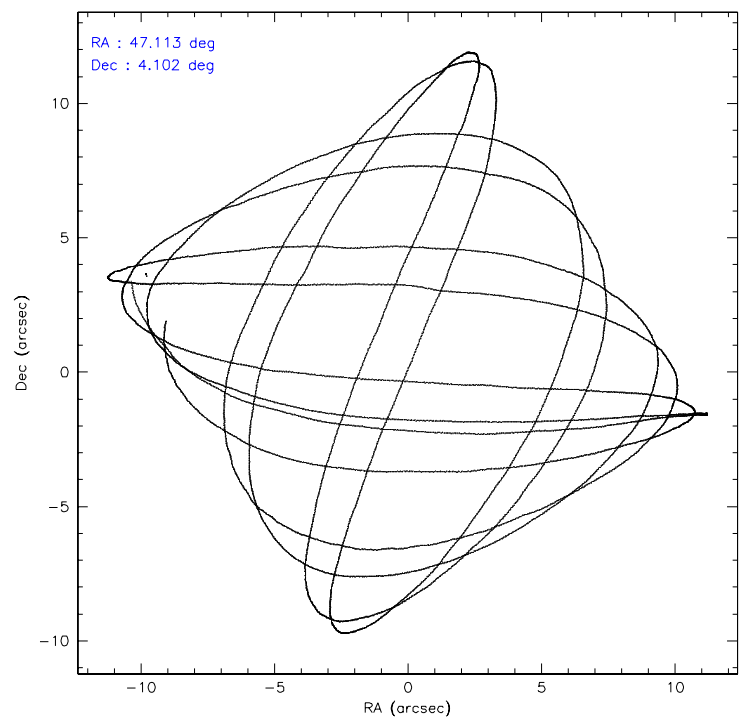
	<b>ccd 5</b>	<b>ccd 6</b>	<b>ccd 7</b>	<b>ccd 8</b>
level 1 events	51338	35967	47133	43689
rejected events	27259	31937	26934	35069
rejected %	53%	88%	57%	80%

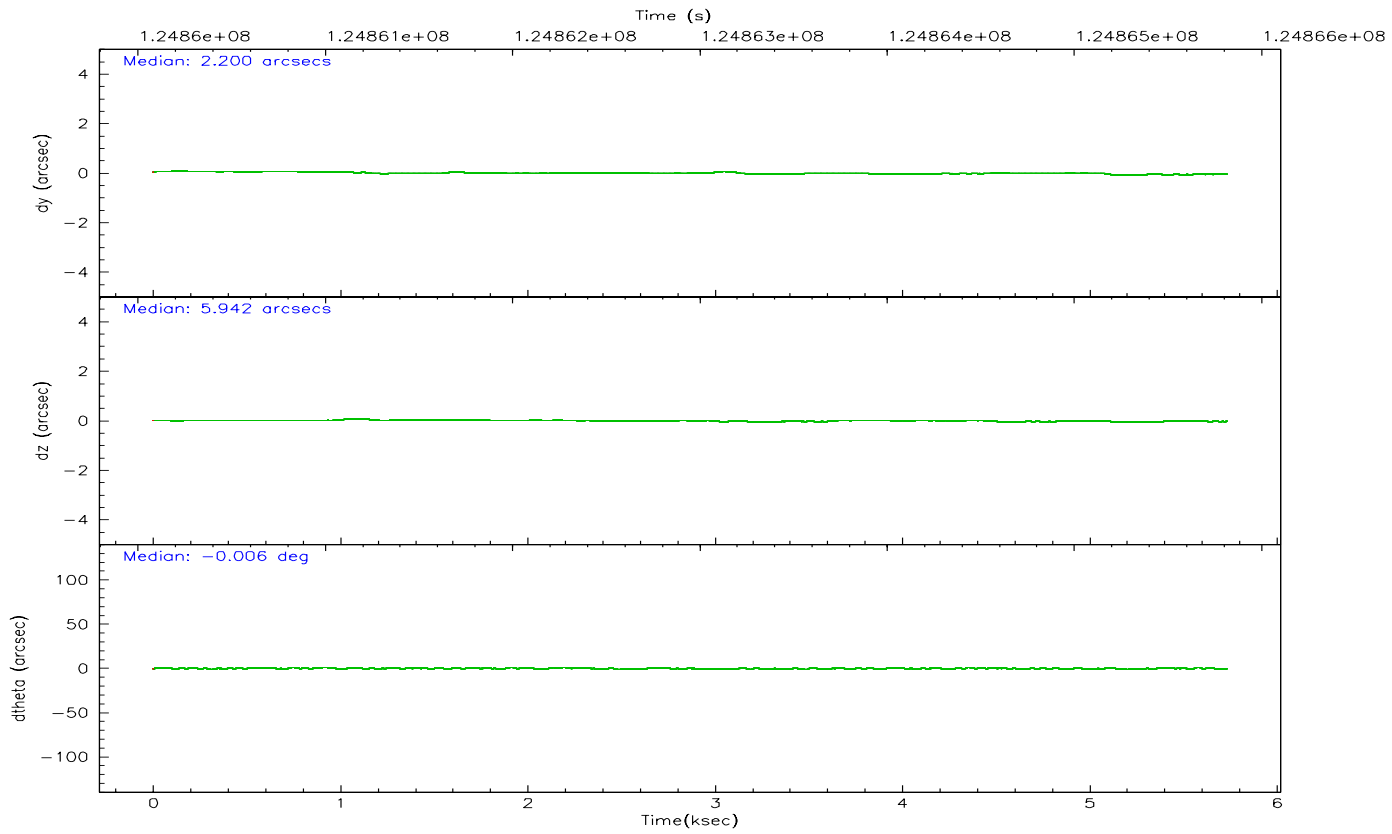
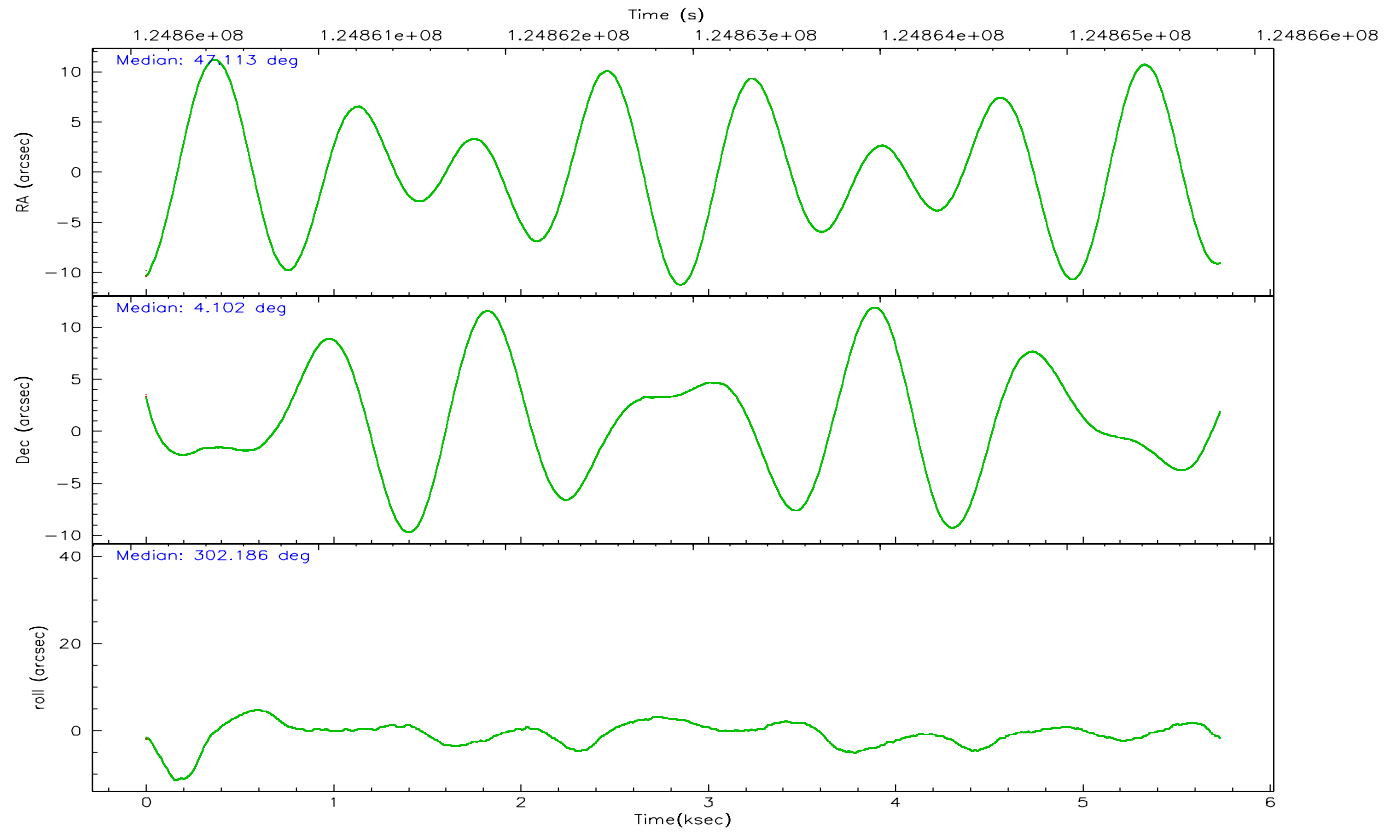
	<b>ccd 5</b>	<b>ccd 6</b>	<b>ccd 7</b>	<b>ccd 8</b>
grade 0 events	3624	1631	2126	2728
	7%	4%	4%	6%
grade 1 events	97	14	66	25
	0%	0%	0%	0%
grade 2 events	6667	822	4069	1882
	12%	2%	8%	4%
grade 3 events	951	398	1874	904
	1%	1%	3%	2%
grade 4 events	905	397	1874	860
	1%	1%	3%	1%
grade 5 events	3753	1509	4499	1810
	7%	4%	9%	4%
grade 6 events	11946	784	10268	2249
	23%	2%	21%	5%
grade 7 events	23395	30412	22357	33231
	45%	84%	47%	76%

## 2.2 Compared Parameters

Parameter	Planned	Actual	Parameter	Planned	Actual
Instrument	ACIS	ACIS	Obspar format version number	6	6
Detector	ACIS-5678	ACIS-5678	Obspar file type	PREDICTED	ACTUAL
Grating	NONE	NONE	Obspar update status	NONE	UPDATED
Data mode	FAINT	FAINT	Number of optional ACIS chips dropped	0	0
Observation mode	POINTING	POINTING	On-chip summing requested	N	N
Pointing RA	47.088488	47.11286832141836	Subarray requested	NONE	NONE
Pointing Dec	4.114332	4.10182567747447	Alternating exposures requested	N	N
Pointing Roll	302.042046	302.1969432263777	Primary exposure time	0.000000	3.1
SIM focus pos (mm)	-0.684267	-0.6828225247311905			
SIM defocus (mm)	0	0.001444936568705701			
SIM translation stage pos (mm)	-190.132523	-190.1425803651734			
SIM translation stage offset (mm)	0	0.01005778216563158			
Observation start time	124860813.184000	124859580.98187			
Observation start date	2001-12-16T03:32:29	2001-12-16T03:13:00			
Observation end time	124865813.184000	124866659.11965			
Observation end date	2001-12-16T04:55:49	2001-12-16T05:10:59			
Read mode	TIMED	TIMED			

2.3 Aspect





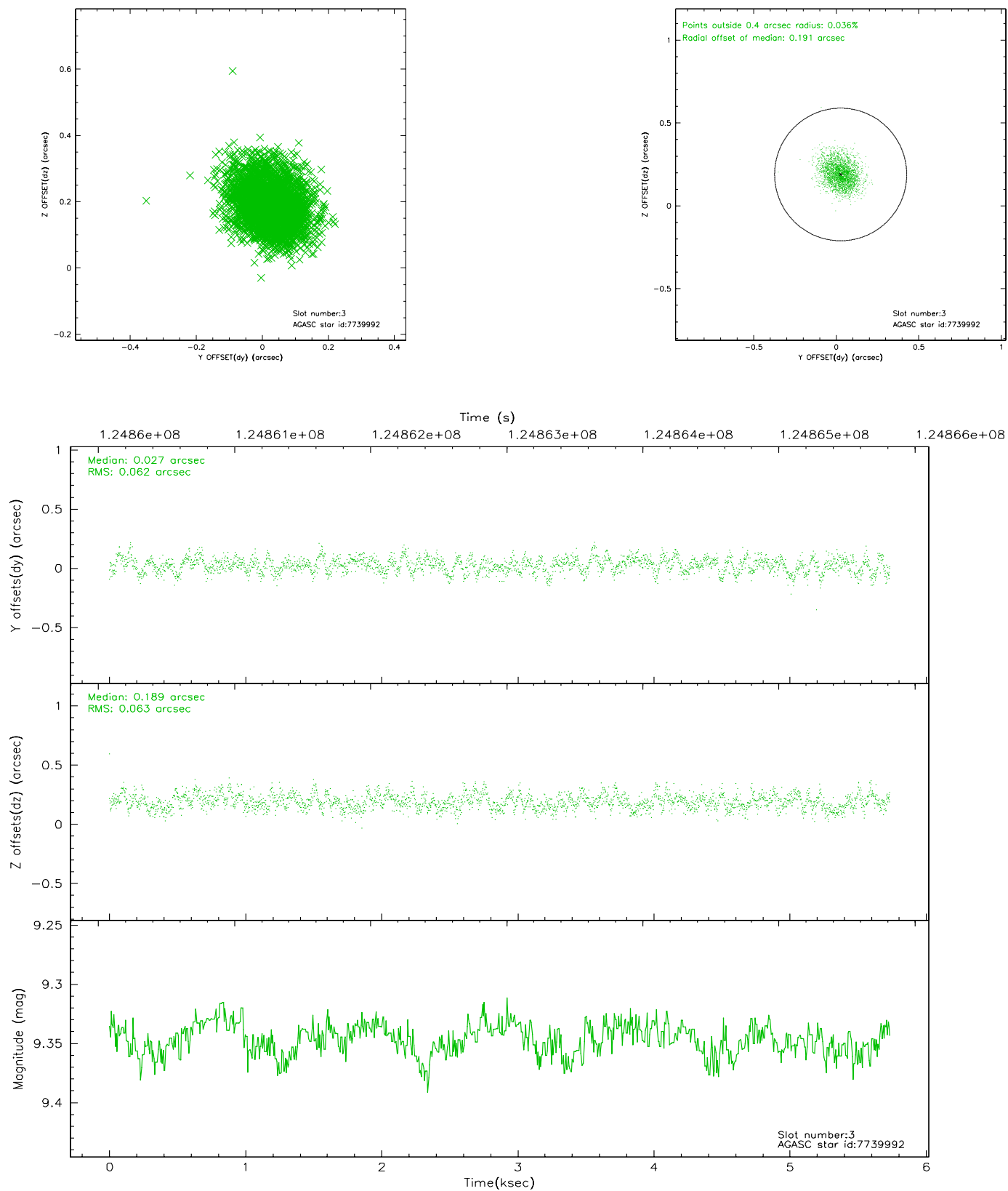
### Slot Statistics

slot	status	id	mag	n_pts	med_dy	med_dz	dr1	dr2	ra	dec	mean_y	mean_z
0	FID	ACIS-S-2	7.11	1397	-0.038	0.022	0.006	0.011	0.000000	0.000000	-754.82	-1727.03
1	FID	ACIS-S-4	7.21	1394	-0.049	0.012	0.005	0.009	0.000000	0.000000	2157.93	180.44
2	FID	ACIS-S-5	7.24	1397	0.055	-0.026	0.006	0.010	0.000000	0.000000	-1806.27	175.16
3	GUIDE	7739992	9.35	2792	0.027	0.189	0.095	0.154	47.606496	4.258171	546.73	1851.02
4	GUIDE	7604128	7.27	2794	-0.177	0.052	0.053	0.083	47.412135	4.384216	-207.87	1500.33
5	GUIDE	7607008	9.68	2795	-0.092	0.035	0.092	0.148	46.679520	4.196211	-1029.34	-1088.38
6	GUIDE	7603264	8.37	2796	0.055	-0.077	0.075	0.121	46.951152	3.412010	1881.23	-1760.60
7	GUIDE	7612184	9.41	2772	0.188	-0.195	0.121	0.193	47.000863	3.268718	2414.55	-1883.21

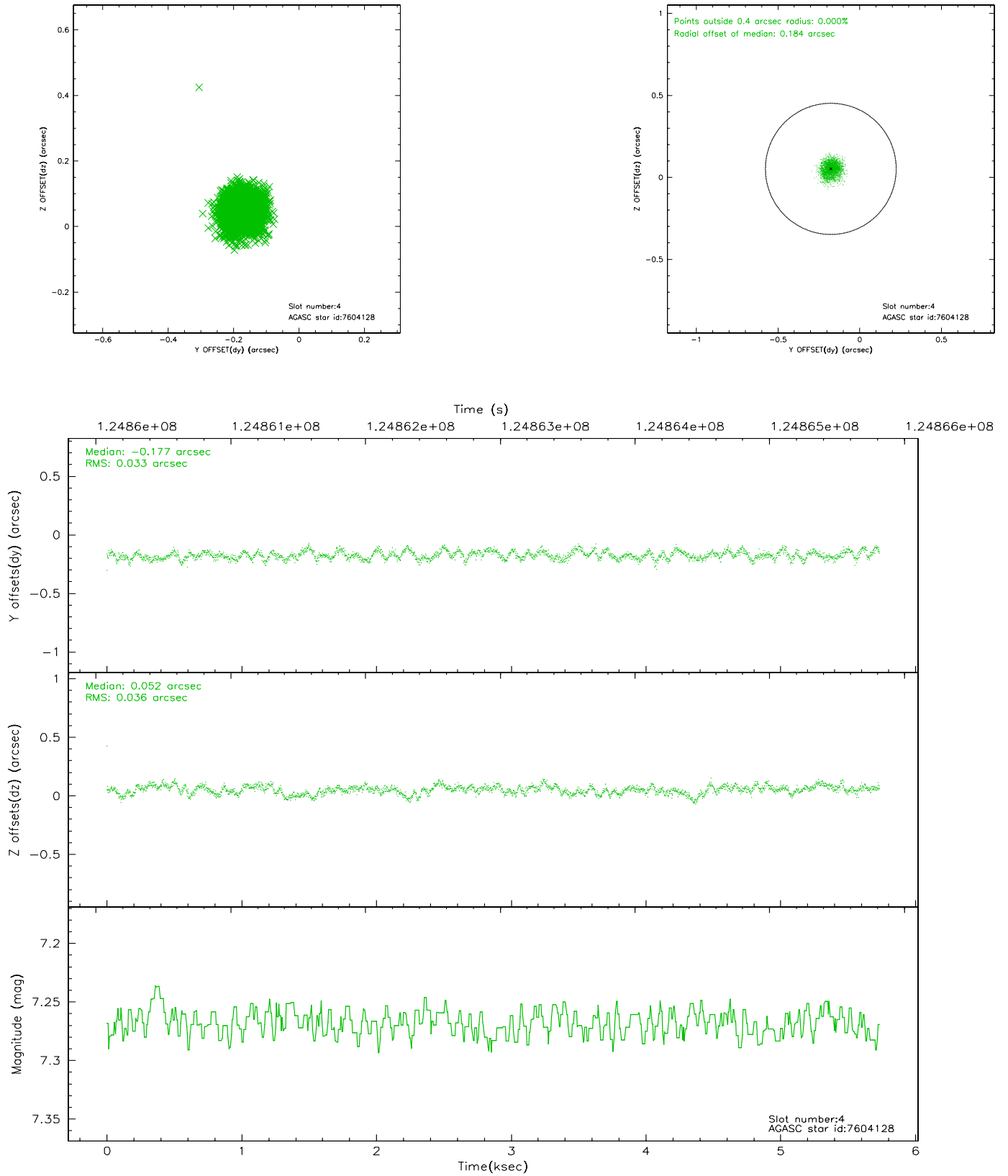


## 2.4 Star Slots

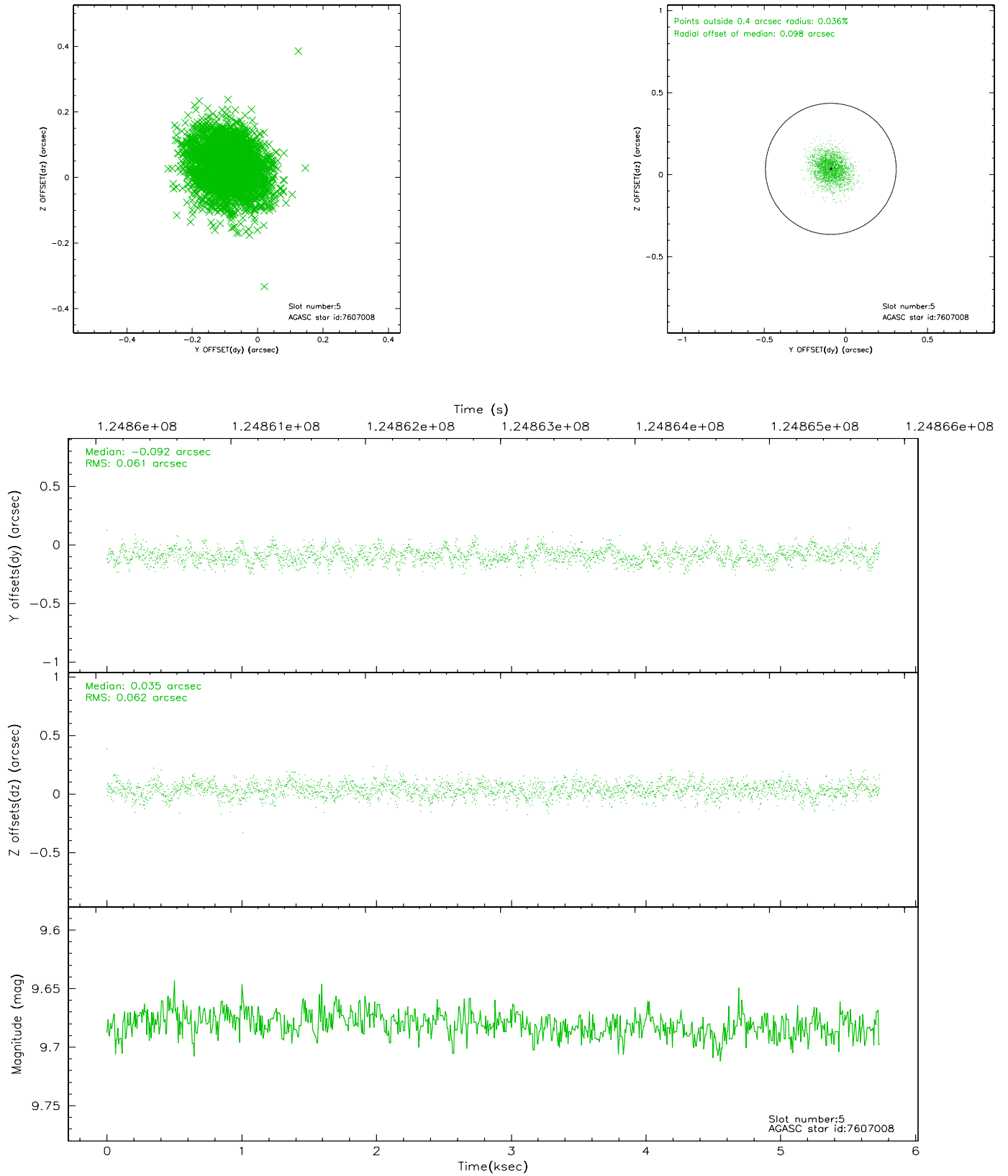
### 2.4.1 Slot 3



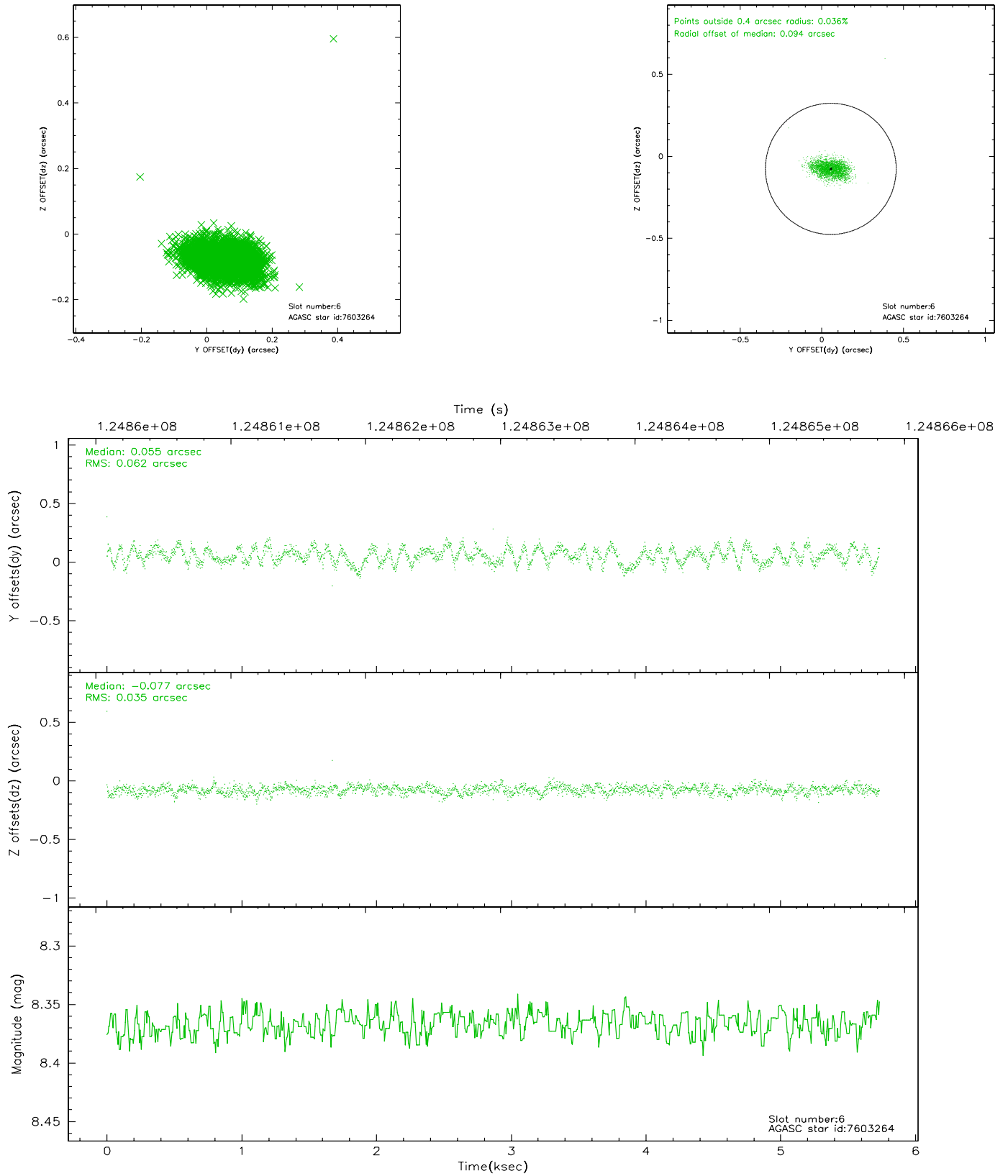
## 2.4.2 Slot 4



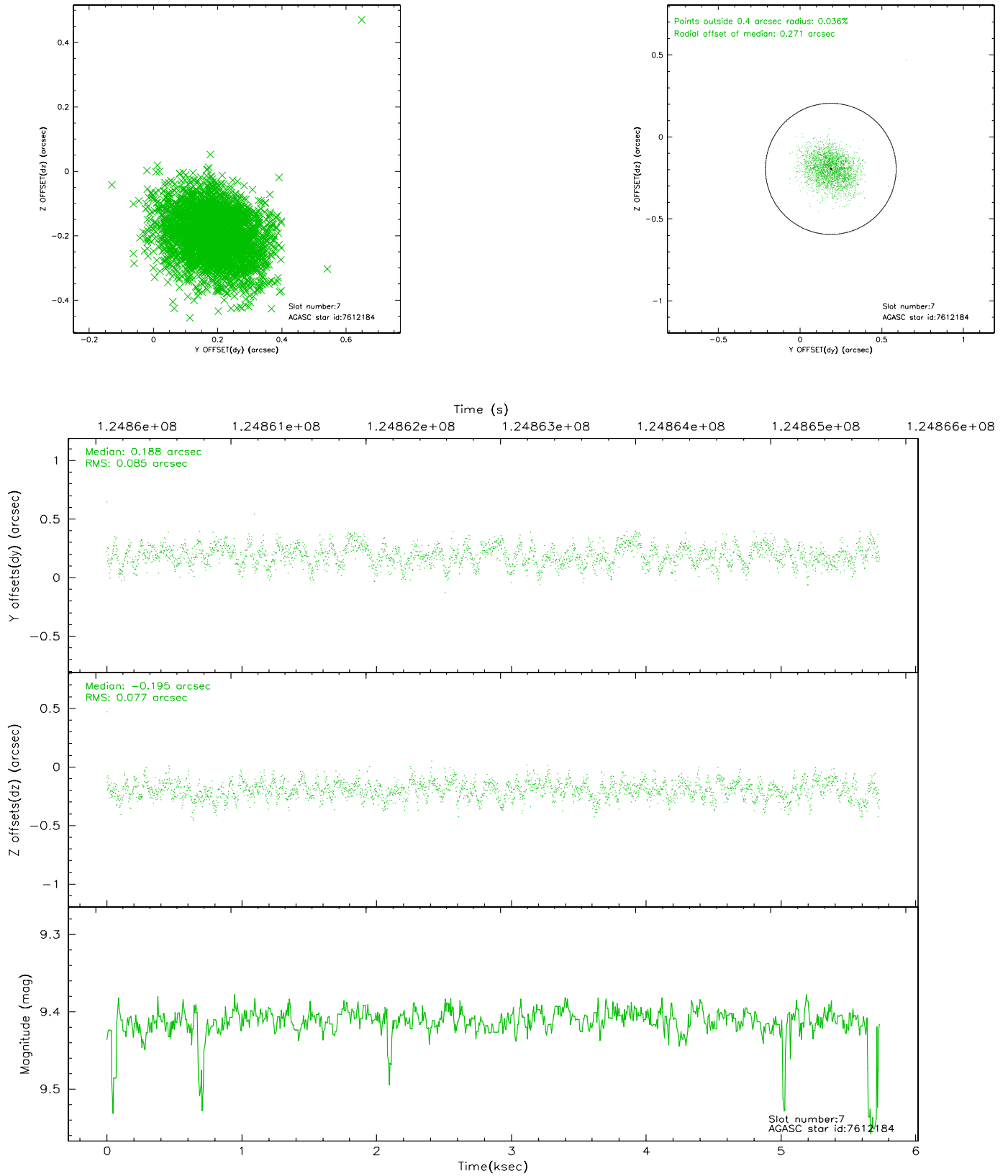
### 2.4.3 Slot 5



## 2.4.4 Slot 6

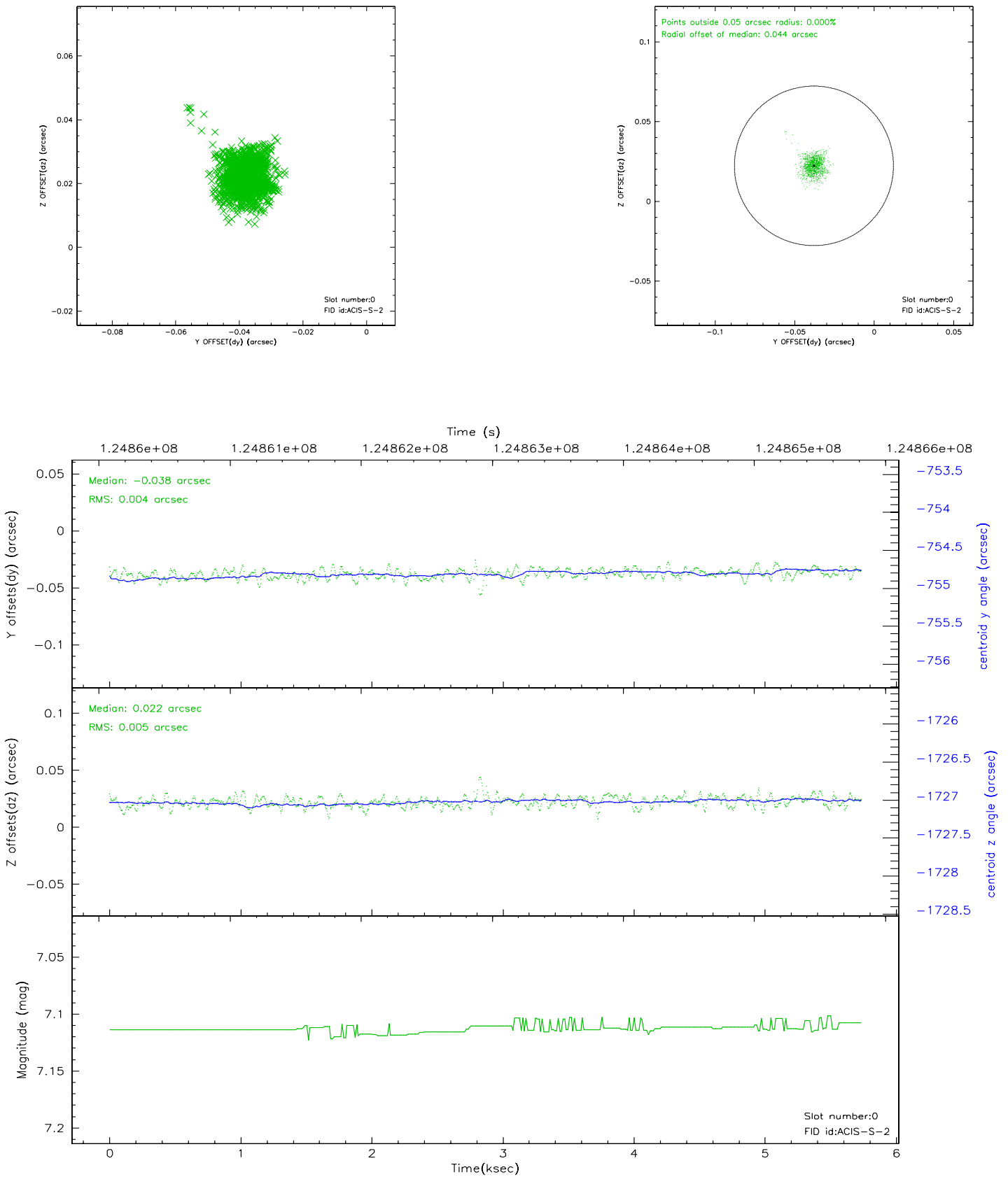


## 2.4.5 Slot 7

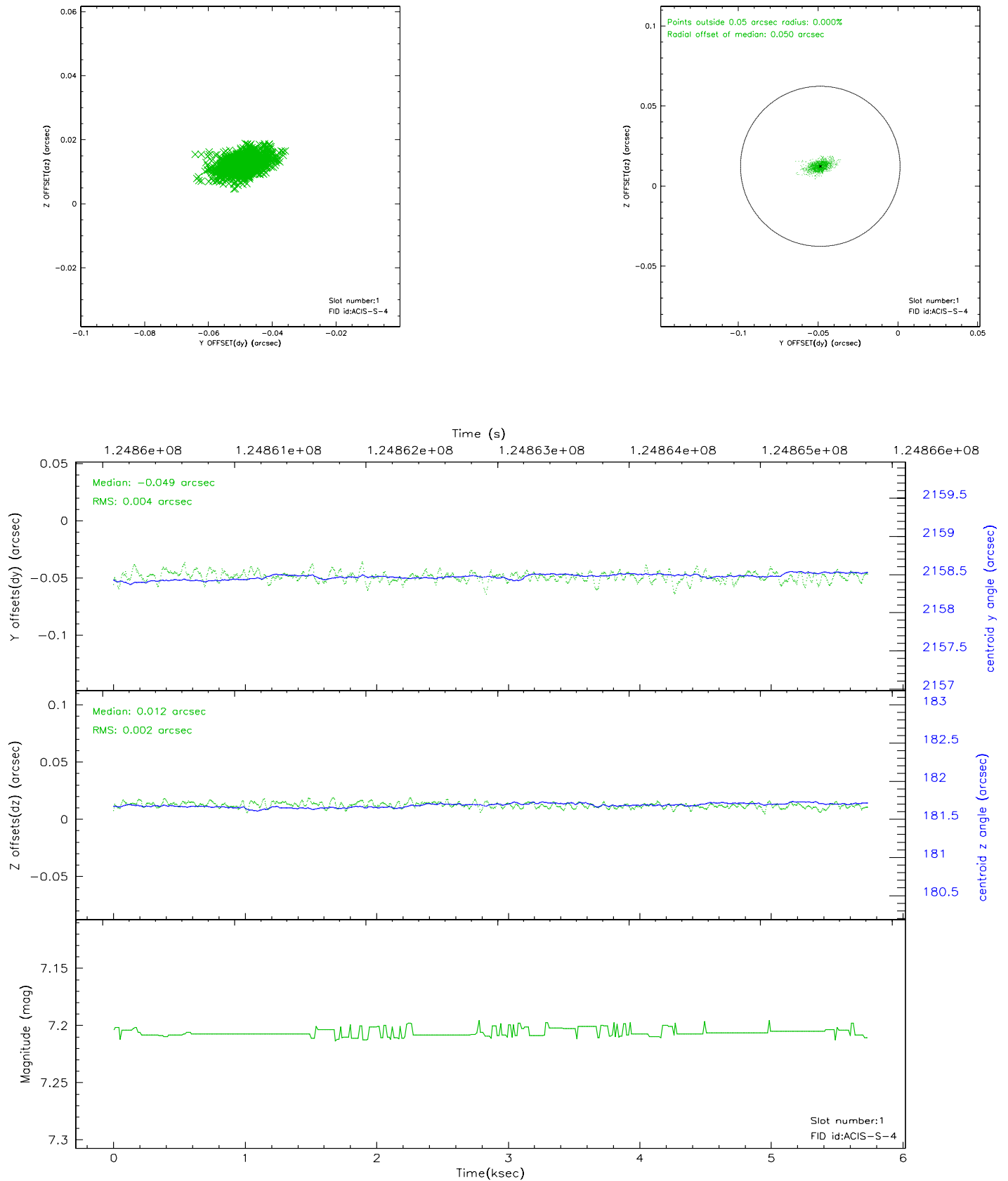


## 2.5 FID Slots

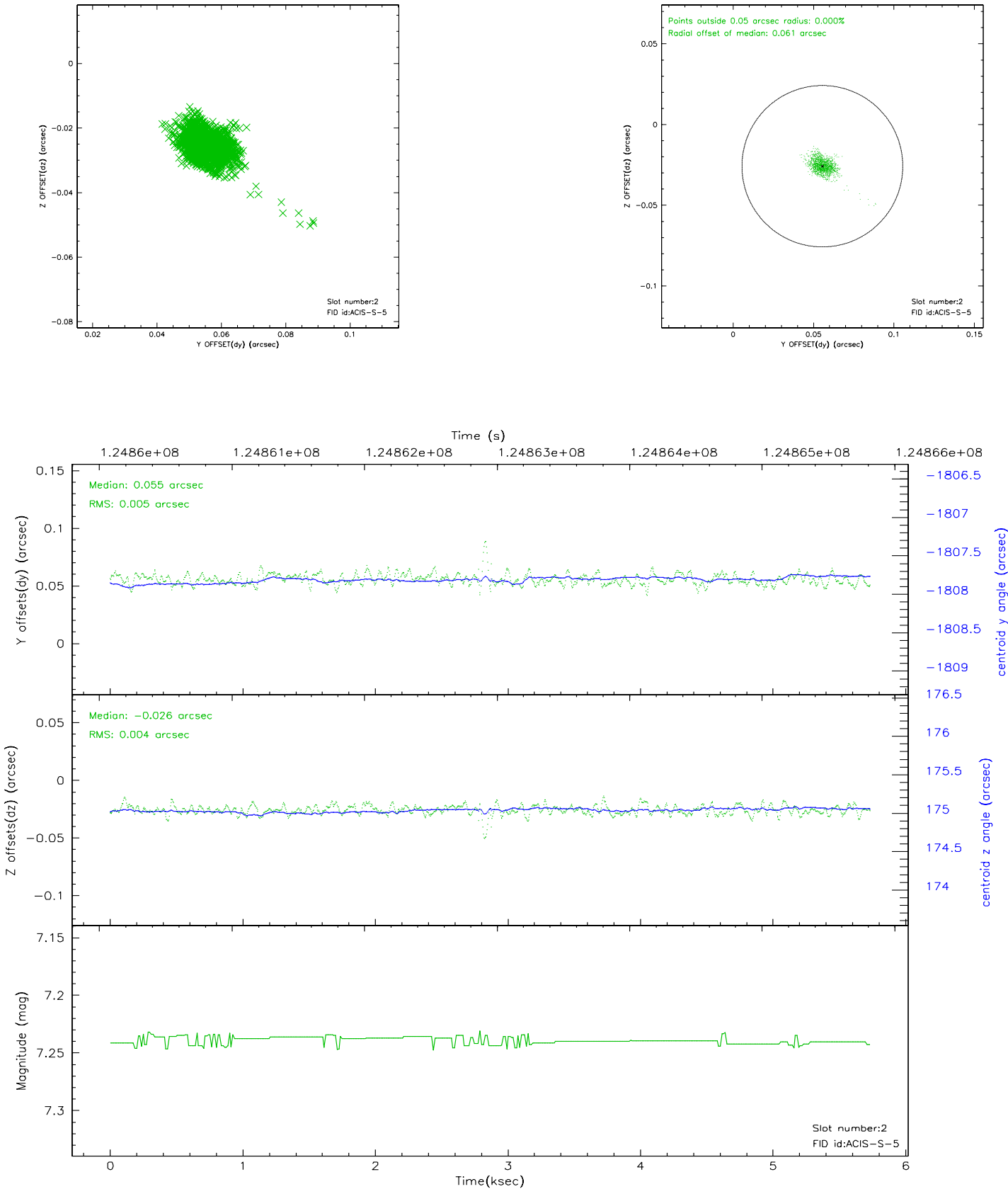
### 2.5.1 Slot 0



## 2.5.2 Slot 1

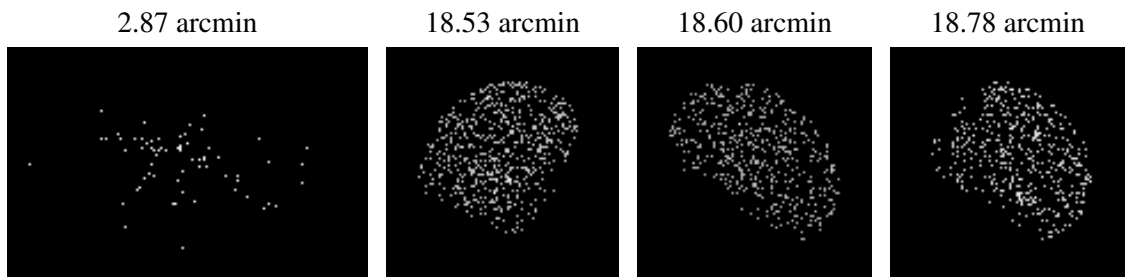


2.5.3 Slot 2





### 3 Point Sources



## A Summary

### A.1 Status

V&V Scientist	Beth Sundheim
V&V Date (YYYY-MM-DD)	2007.01.18
V&V Edition	1
V&V Disposition and Status	OK
V&V Charge Time	5.233

### A.2 Comments