

V&V Reference Report

L2 ASCDS Version : 8.4.5

Observation 2938 - L2 Version 4
Chandra X-Ray Center

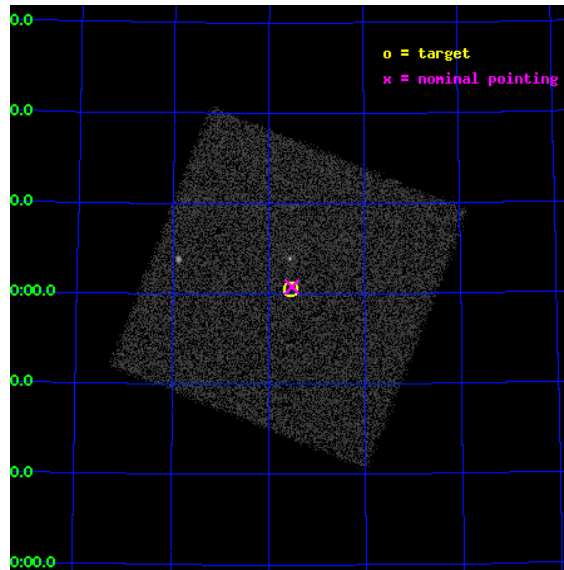
L2 Processing Date : Oct 1 2012

Contents

1	Front	2
2	OBI	3
2.1	OBI	3
2.1.1	Images	3
2.1.2	Parameters	4
2.1.3	Events	4
2.2	Compared Parameters	5
2.3	Aspect	6
2.4	Star Slots	9
2.4.1	Slot 3	9
2.4.2	Slot 4	10
2.4.3	Slot 5	11
2.4.4	Slot 6	12
2.5	FID Slots	13
2.5.1	Slot 0	13
2.5.2	Slot 1	14
2.5.3	Slot 2	15
A	Summary	16
A.1	Status	16
A.2	Comments	16

1 Front

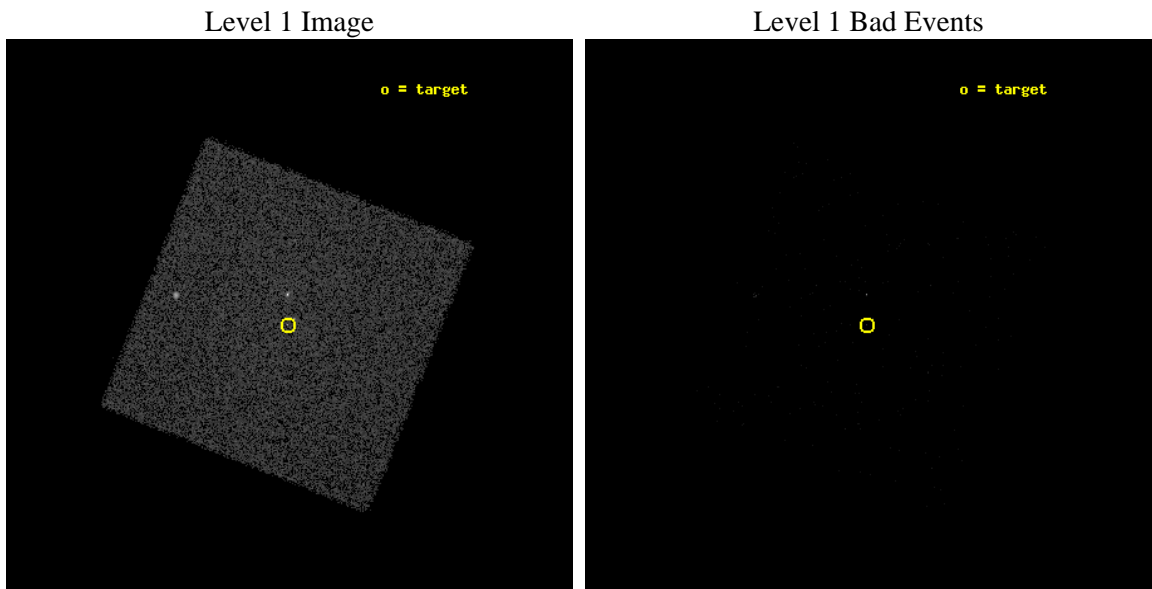
seq_num	600275	Sequence number
obs_id	2938	Observation id
title	UNVEILING THE NATURE OF ULTRA LUMINOUS X-RAY SOURCES IN NEARBY SPIRAL GALAXIES - REALLY ~100 SOLAR MASS BLACK HOLES ? -	Proposal titl
observer	MR. MASAHIKO SUGIHO	Principal investigator
object	M81 X-6	Source name
ra_targ	148.887708	Observer's specified target RA [deg]
dec_targ	69.009694	Observer's specified target Dec [deg]
ra_nom	148.87945352254	Nominal RA [deg]
dec_nom	69.013350883515	Nominal Dec [deg]
roll_nom	156.65316891653	Nominal Roll [deg]
revision	4	Processing version of data
ontime	1766.331321165	[s]
livetime	1756.8583644604	Ontime multiplied by DTCOR
l2events	49663	Number of level 2 events



2 OBI

2.1 OBI

2.1.1 Images



2.1.2 Parameters

obi_num	1	Obi number	sched_exp_time	2000.000000	[s] Scheduled observation exposure time
ascdsver	8.4.5	Processing system revision	ontime	1766.331321165	[s]
caldbver	4.5.2	 	l1events	80272	Number of level 1 events
date	2012-10-01T03:40:46	Date and time of file creation			
revision	4	Processing version of data			

2.1.3 Events

Level 1 Events

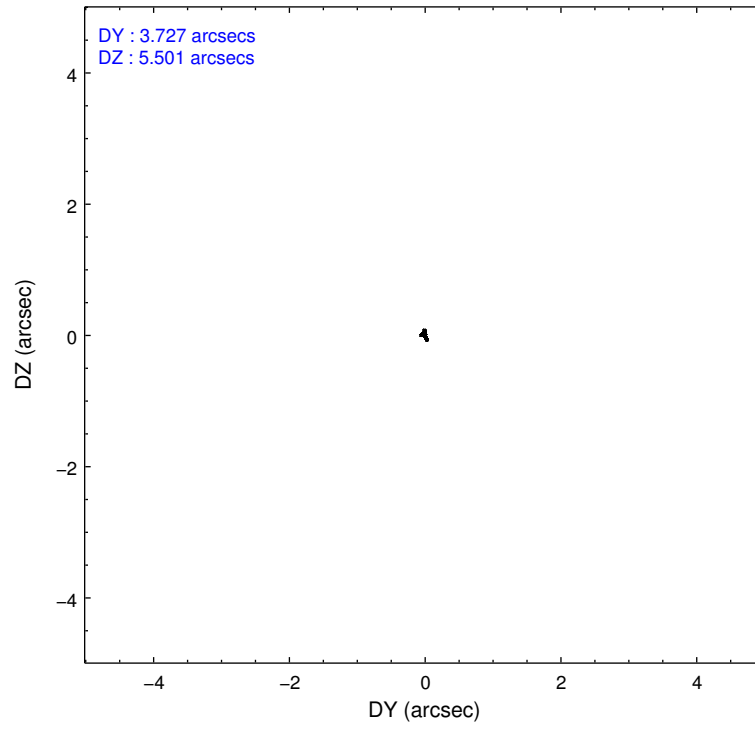
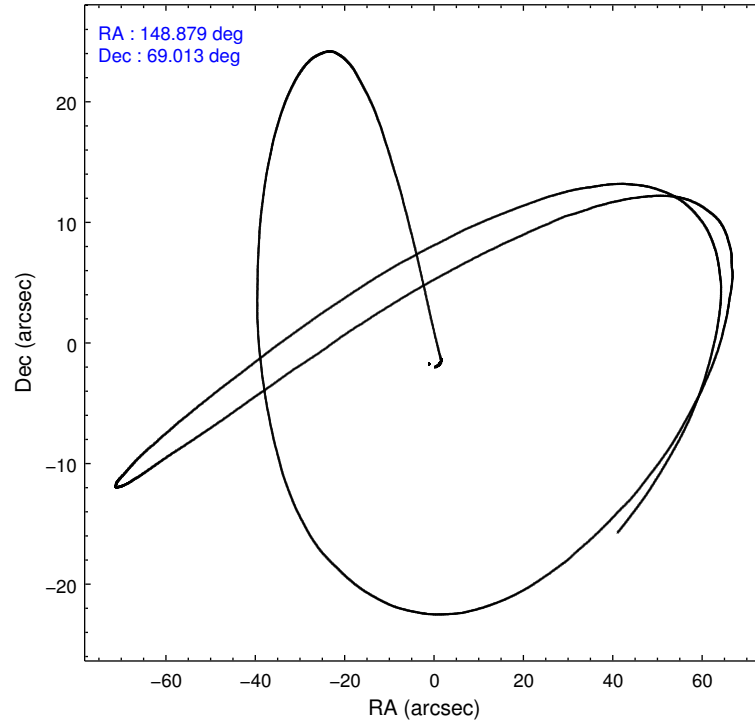
	segment 0
level 1 events	80272
rejected events	6610
rejected %	8%

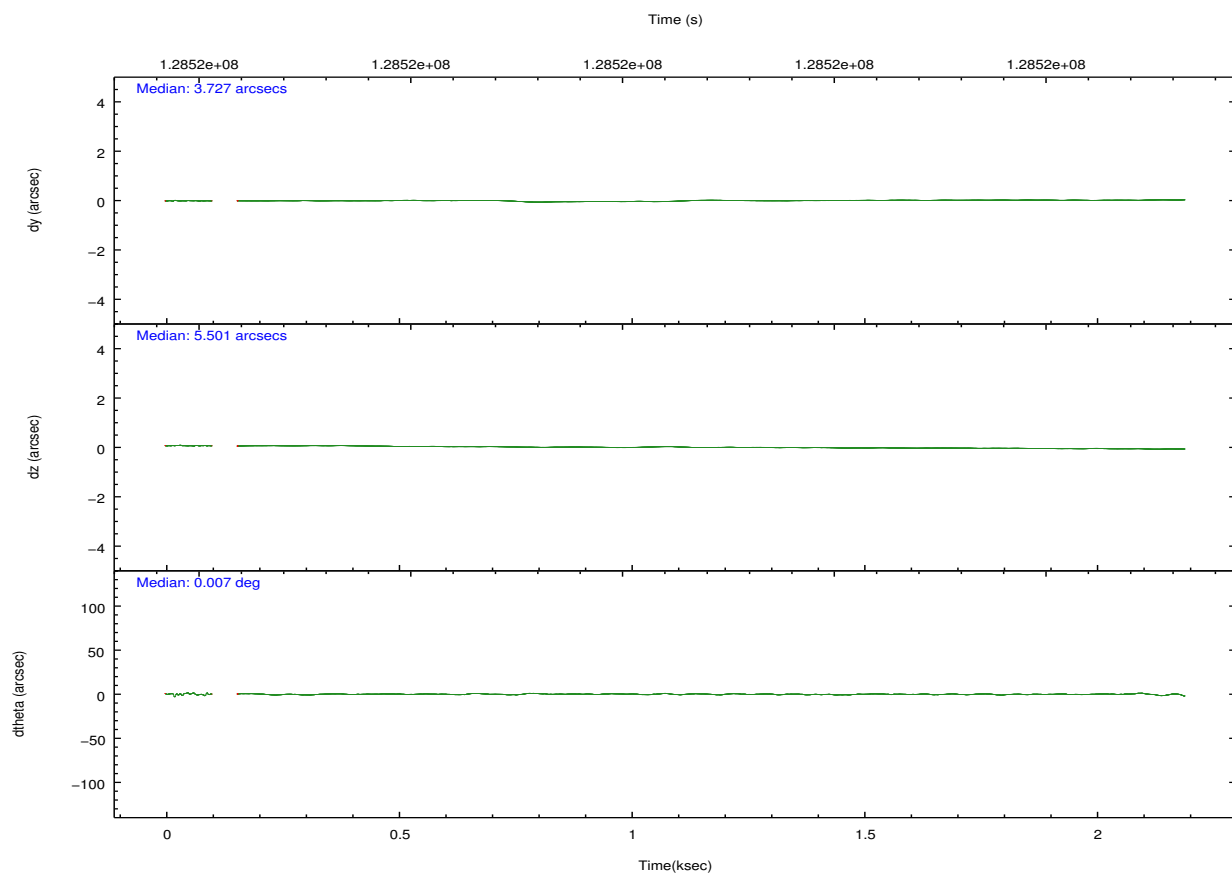
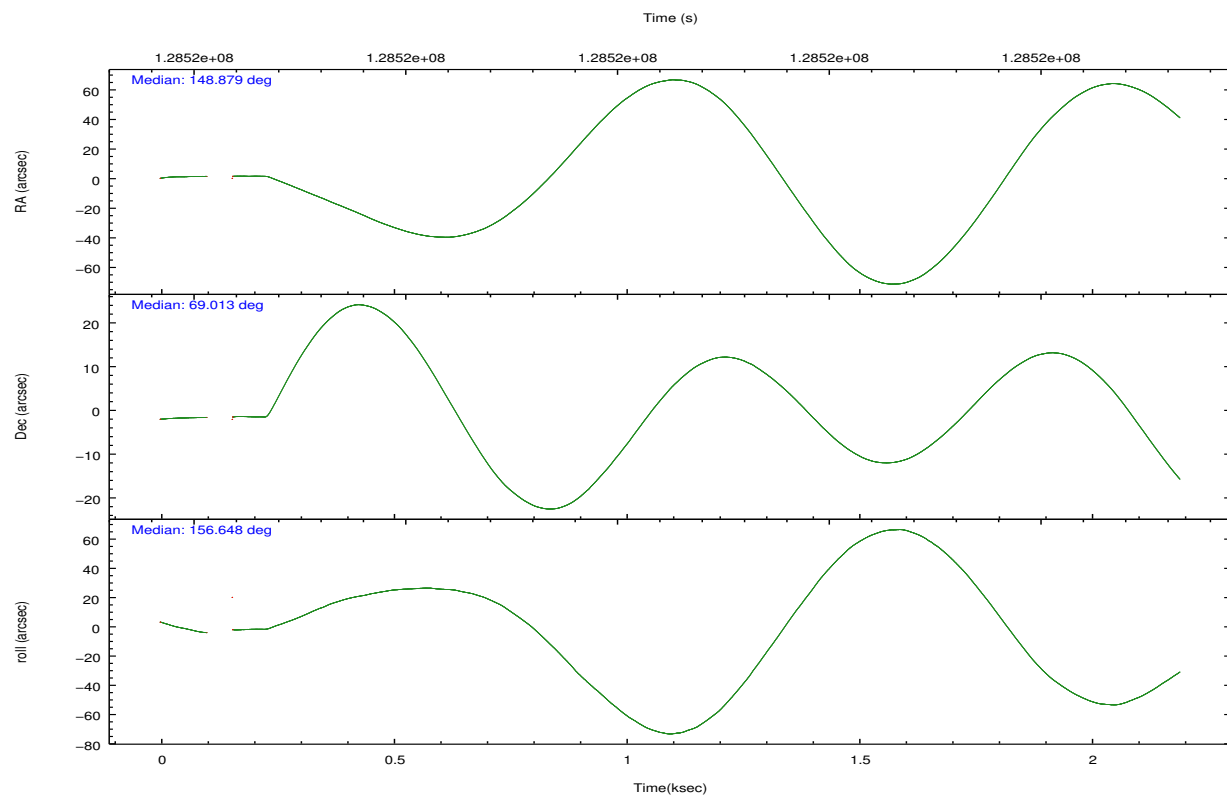
2.2 Compared Parameters

Parameter	Planned	Actual
Instrument	HRC	HRC
Detector	HRC-I	HRC-I
Grating	NONE	NONE
Data mode	OBSERVING	OBSERVING
Observation mode	POINTING	POINTING
[deg] Pointing RA	148.954593	148.8794535225371
[deg] Pointing Dec	69.016453	69.01335088351541
[deg] Pointing Roll	156.678492	156.6531689165348
[mm] SIM focus pos	-1.040293	-1.038866356238299
[mm] SIM defocus	0	0.001426264420575141
[mm] SIM translation stage pos	126.985494	126.9854943052878
[mm] SIM translation stage offset	0	-5.413686238853188e-06
[s] Observation start time (MET)	128519220.184000	128518844.45391
Observation start date	2002-01-27T11:45:56	2002-01-27T11:40:44
[s] Observation end time (MET)	128521220.184000	128521790.30402
Observation end date	2002-01-27T12:19:16	2002-01-27T12:29:50

Parameter	Planned	Actual
Obspar format version number	7	7
Obspar file type	PREDICTED	ACTUAL
Obspar update status	NONE	UPDATED

2.3 Aspect



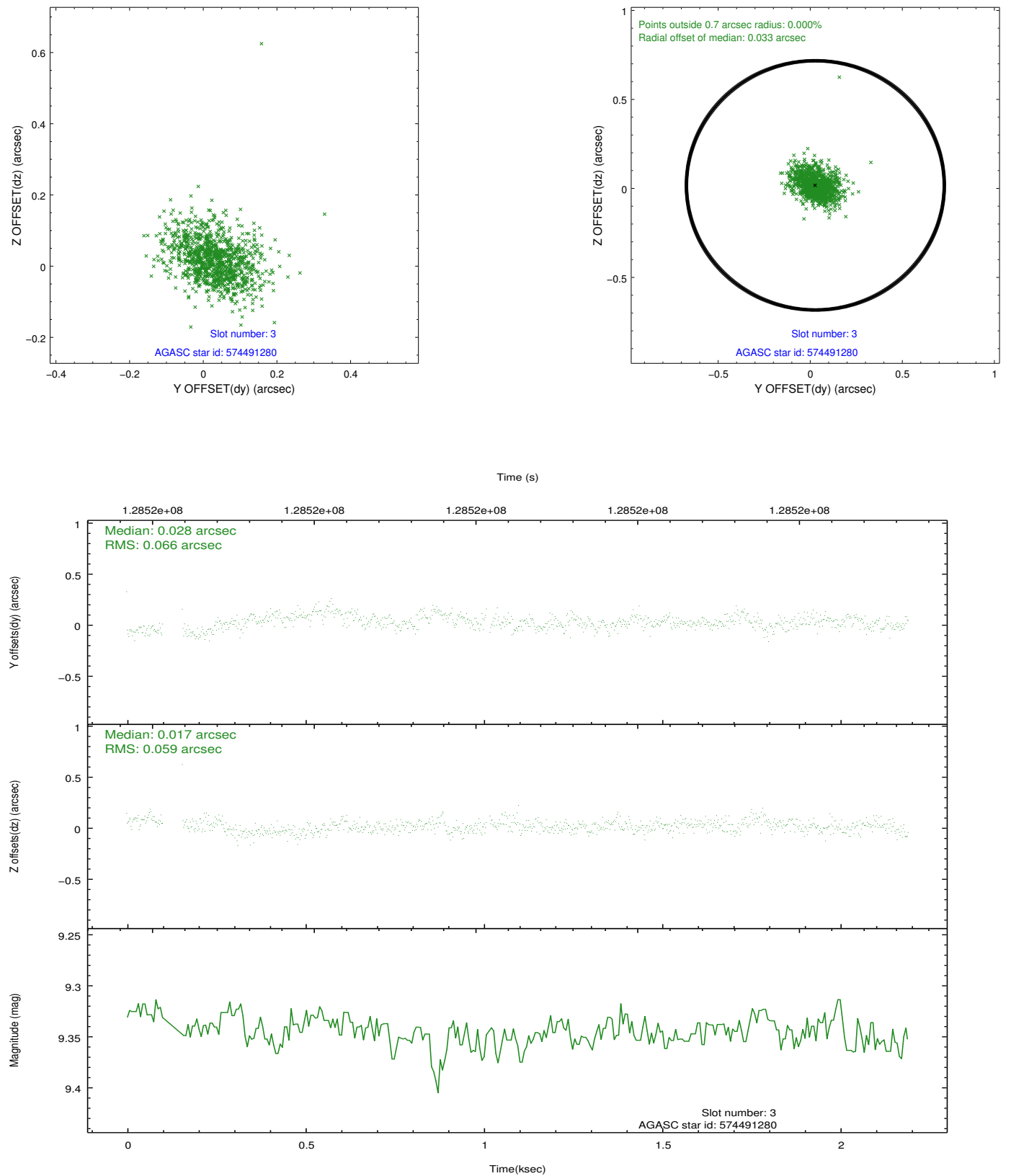


Slot Statistics

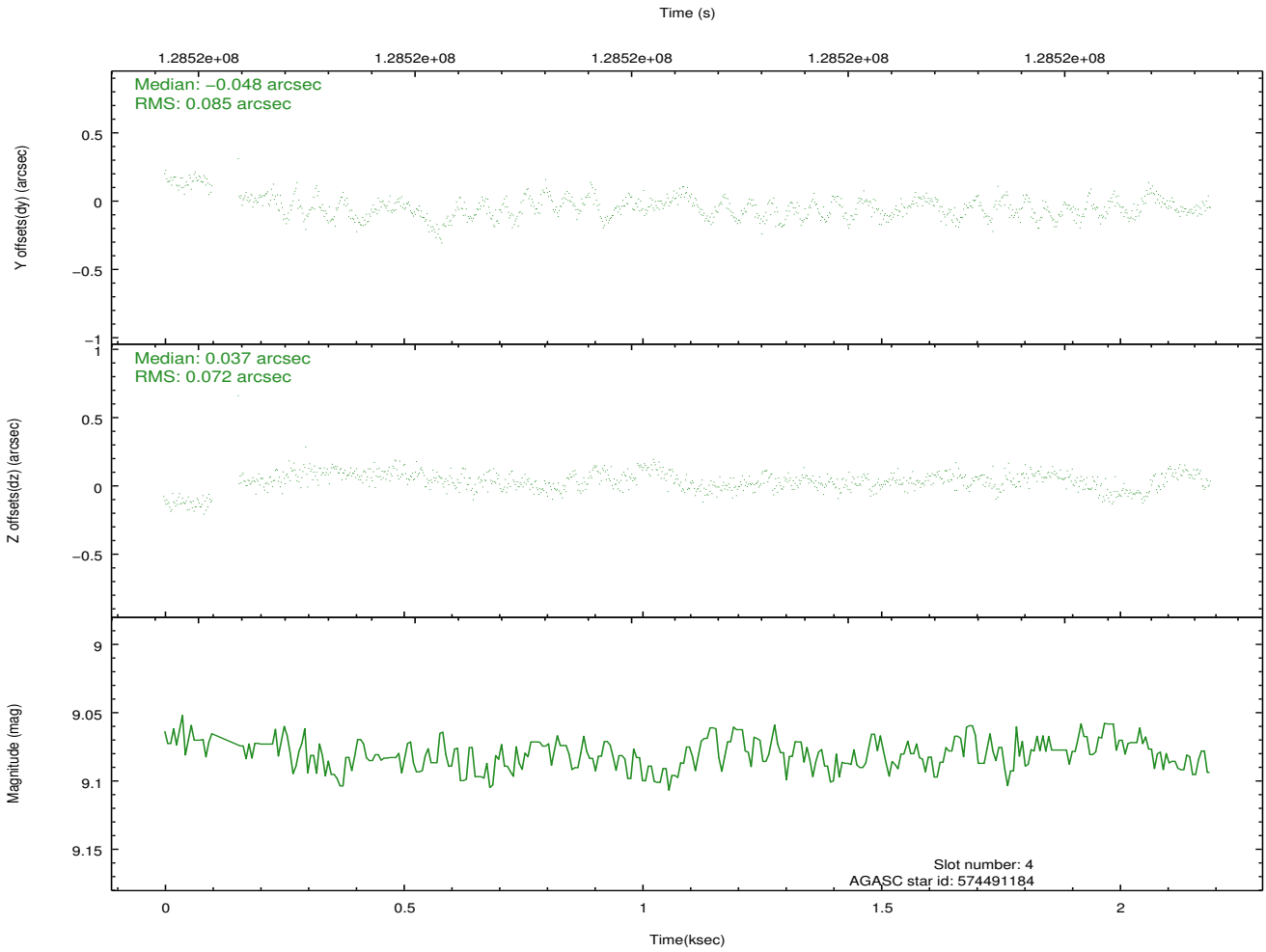
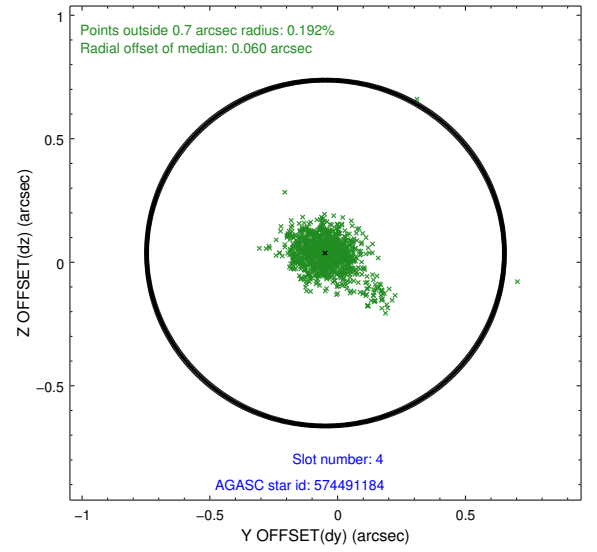
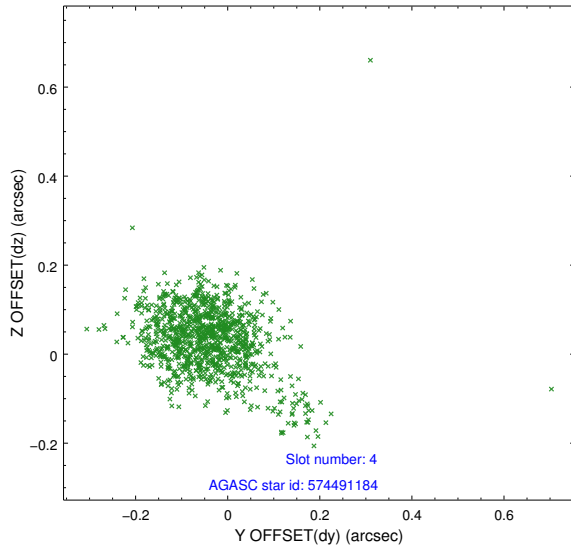
	status	id	mag	n_pts	med_dy	med_dz	drl
	FID	HRC-I-1	6.97	522	0.006	0.038	0.007
	FID	HRC-I-2	7.01	520	0.075	-0.047	0.006
	FID	HRC-I-3	7.05	522	0.038	-0.081	0.006
	GUIDE	574491280	9.34	1040	0.028	0.017	0.091
	GUIDE	574491184	9.08	1043	-0.048	0.037	0.105
	GUIDE	574493848	10.23	1044	0.022	-0.023	0.134
	GUIDE	574489160	10.01	1041	-0.009	-0.035	0.170
0.0000.0000.0000.0000000.00000000.000.00							

2.4 Star Slots

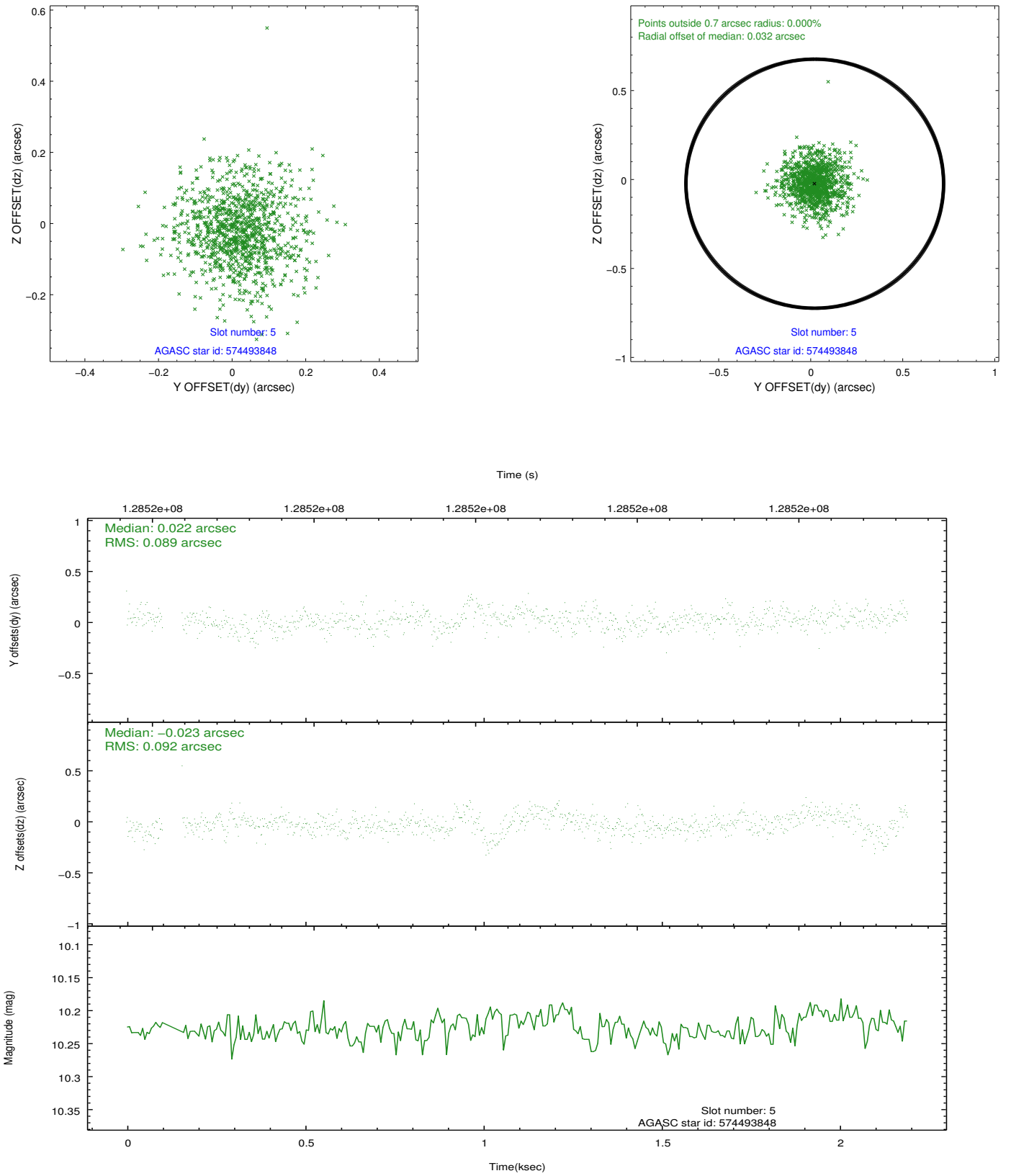
2.4.1 Slot 3



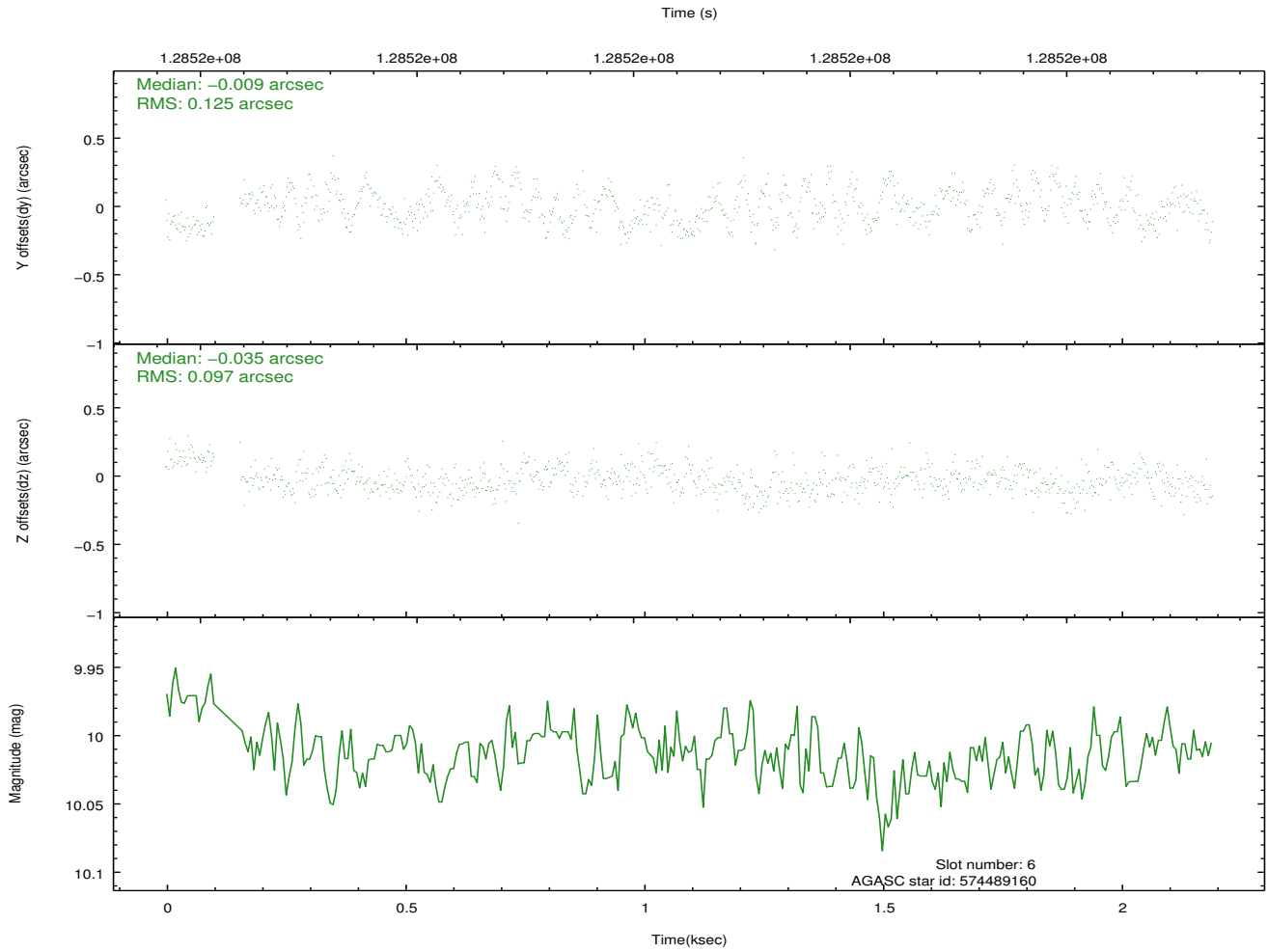
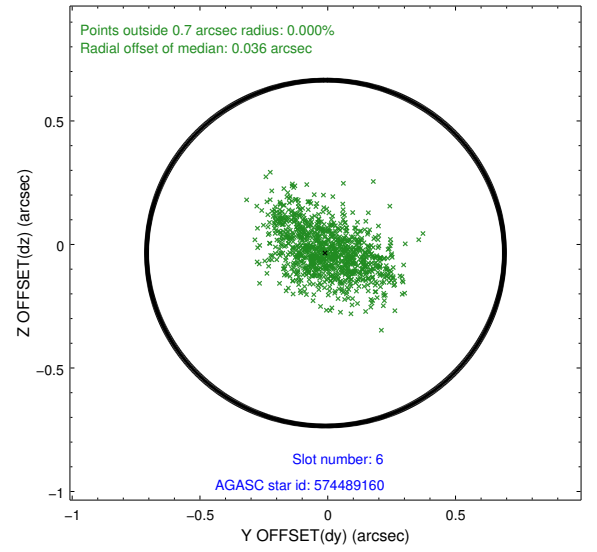
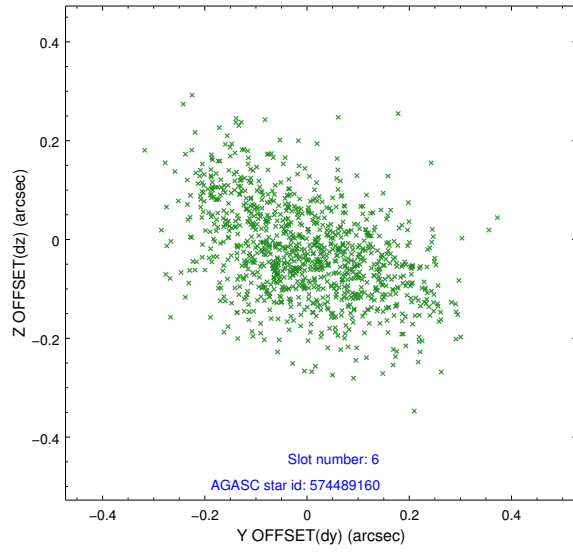
2.4.2 Slot 4



2.4.3 Slot 5

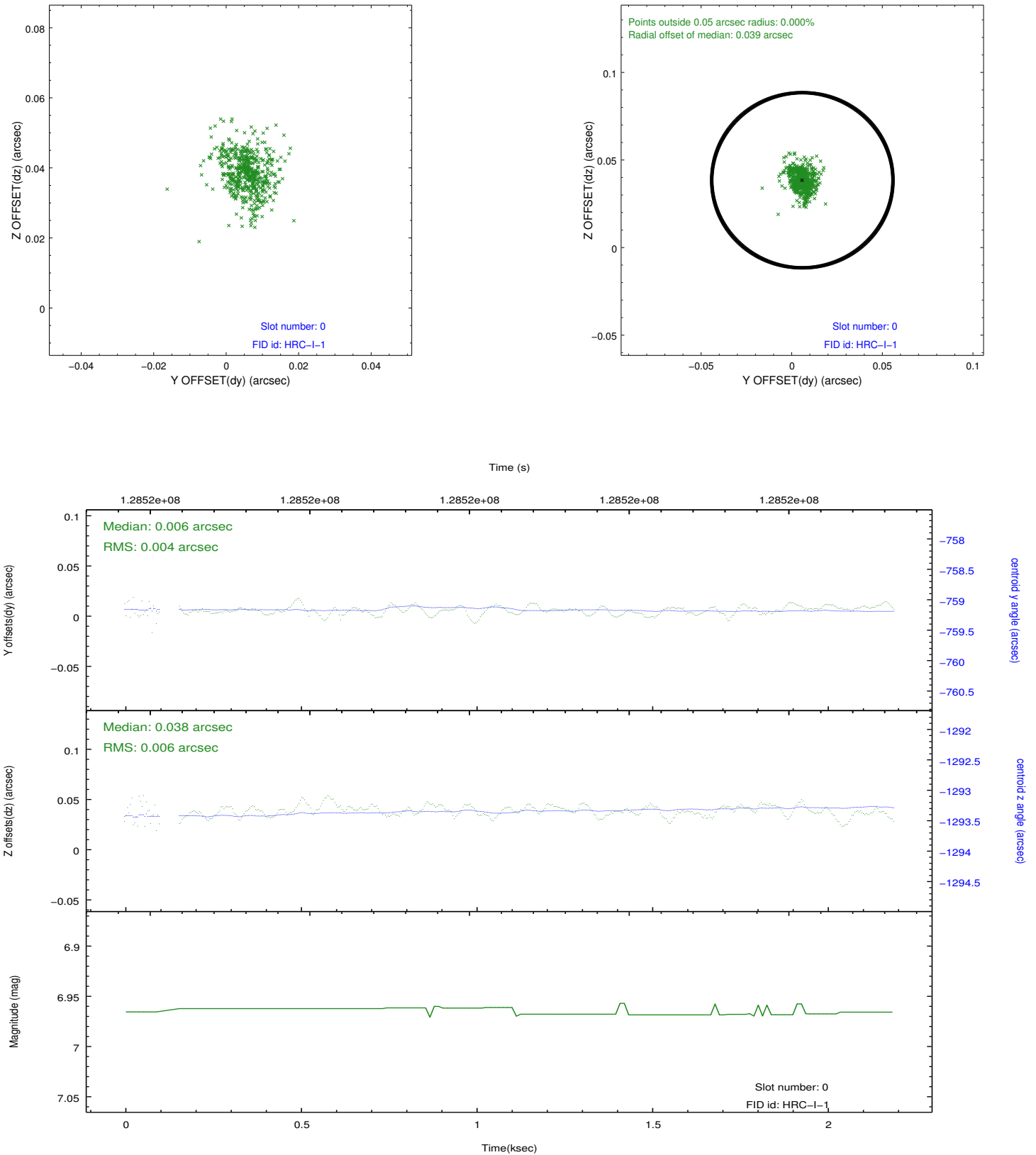


2.4.4 Slot 6

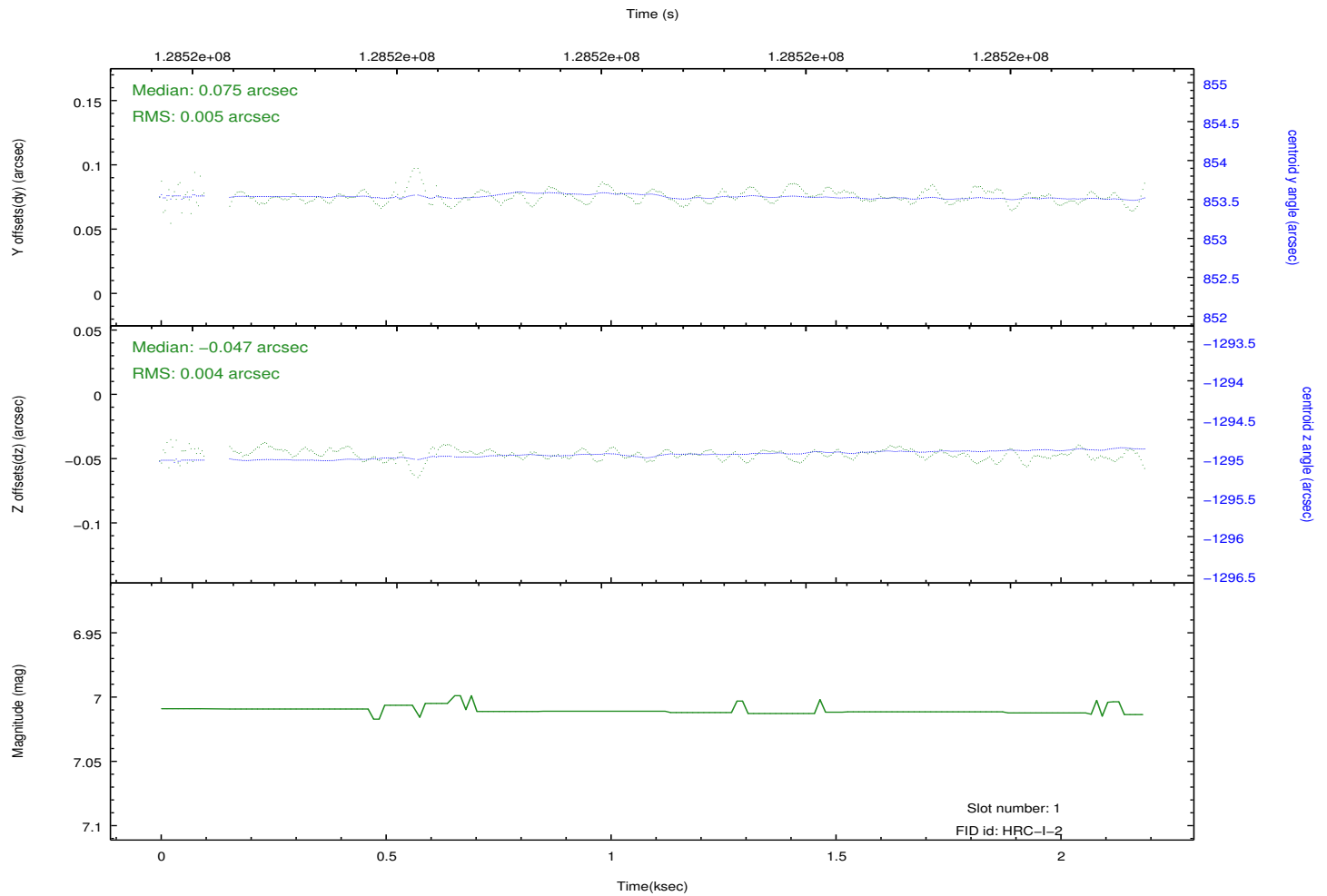
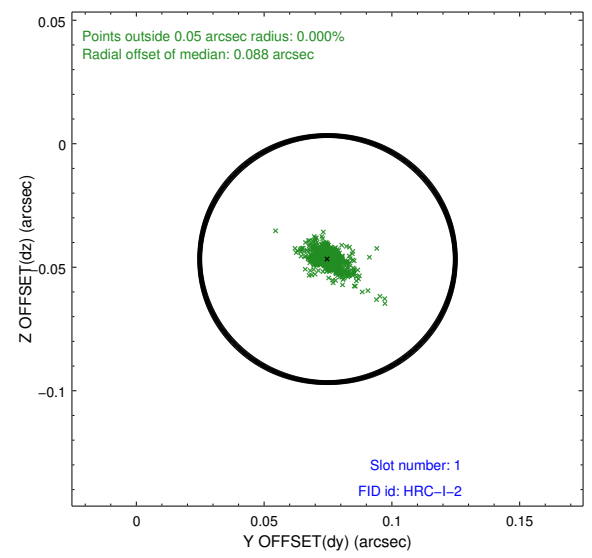
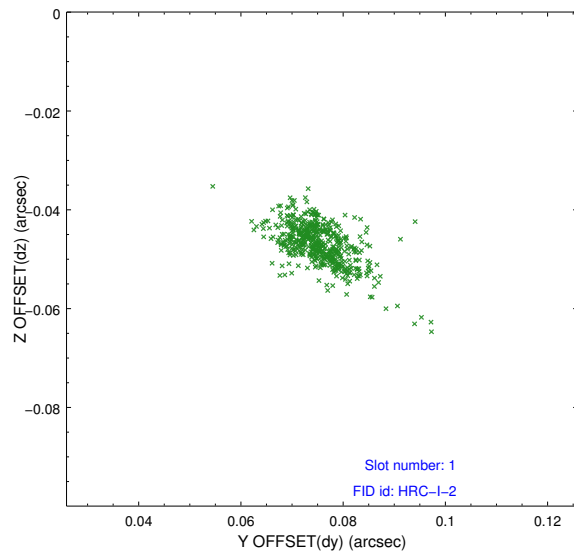


2.5 FID Slots

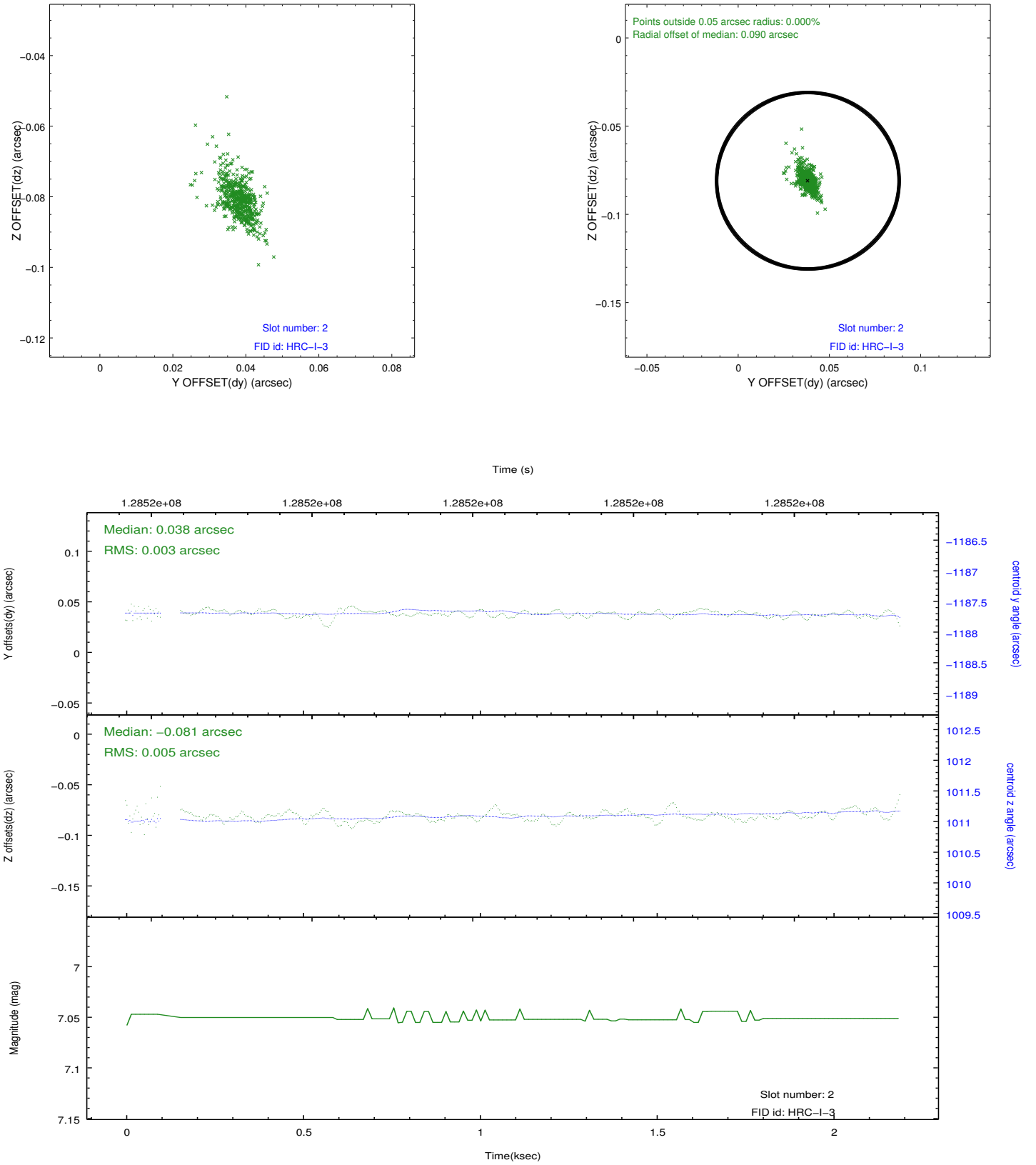
2.5.1 Slot 0



2.5.2 Slot 1



2.5.3 Slot 2



A Summary

A.1 Status

V&V Scientist	Jen Lauer
V&V Date (YYYY-MM-DD)	2012.10.03
V&V Edition	1
V&V Disposition and Status	OK
V&V Charge Time	1.766

A.2 Comments

Gap in aspect data: start time of gap 128519129.403917 stop time of gap 128519183.472666. Event data begins about 3.5 ksec into the observation. The gap in the aspect data occurs before the start of the event data.